

# WALKMAN

Cassette Player

WM-EX122

## Operating Instructions

WALKMAN is a registered trademark of Sony Corporation.

Sony Corporation © 1996

Printed in Malaysia

### OWNER'S RECORD

The model number is located at the rear and the serial number is located inside the cassette holder. Record the serial number in the space provided below. Refer to them whenever you call upon your Sony dealer regarding this product.

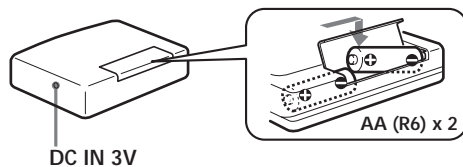
Model No. WM-EX122

Serial No. \_\_\_\_\_

## Getting Started

### Using with Batteries

Insert two AA (R6) batteries in correct polarity.



#### Notes

- When you are not going to use your Walkman for a long time, remove the batteries to prevent damage from battery leakage and corrosion.
- When the batteries become weak, the sound will be unstable or can not be heard. In such a case, replace both batteries.
- Concerning the battery life, see "Specifications".

### Using External Power Sources

You can connect the following external power sources through the DC IN 3 V jack located on the bottom. (When you plug a cord into the DC IN 3 V jack, the internal batteries are automatically bypassed.)

- House current using an AC-E30HG AC power adaptor

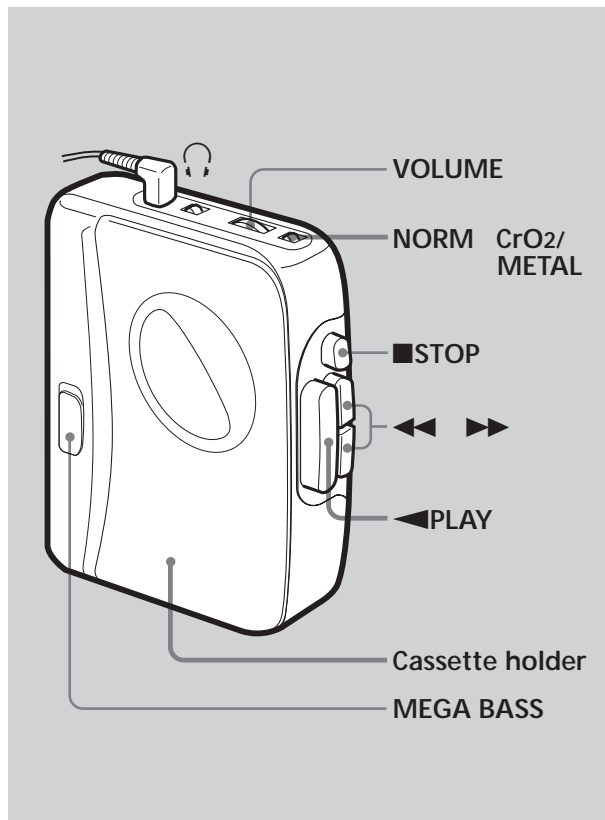
#### Note

Use only the recommended AC-E30HG AC power adaptor (not supplied). Do not use any other AC power adaptor.



Polarity of the plug

## Playing Cassette



### Operating the Cassette Player

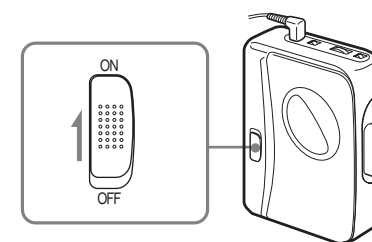
To wind the tape	Press ◀◀ or ▶▶.
To adjust the volume	Turn the VOLUME control.
To stop	Press ■ STOP.

#### Notes on playing cassettes

- Do not use cassettes longer than 90 minutes except for long continuous playback.
- If the tape is playing but no sound comes out, the batteries may be weak. Replace all batteries with new ones.
- If your Walkman has not been used for a long time, run the Walkman for a few minutes before inserting a cassette.
- Do not open the cassette holder while the tape is running.
- Do not wind the headphones cord around the Walkman. The buttons may be kept pressed, causing unnecessary battery usage.

### Using MEGA BASS

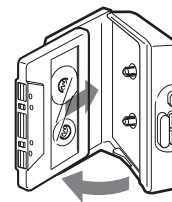
Set the MEGA BASS switch to ON to produce deep and powerful sound.



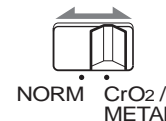
#### When using MEGA BASS

If the AVLS switch is set to LIMIT, the MEGA BASS effect is reduced.

### 1 Insert a cassette.



### 2 Select the NORM or CrO<sub>2</sub>/METAL mode to match the tape type.



### 3 Press the ◀ PLAY.

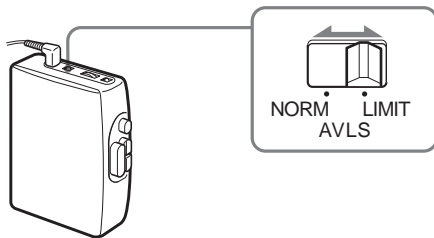


# Using AVLS

## AVLS (Automatic Volume Limiter System)

The AVLS switch allows you to limit the maximum volume of your Walkman personal stereo without degrading the sound quality.

- When the AVLS switch is set to LIMIT (around 85 dB), the volume will be kept at a moderate level without the degradation of the sound quality, even if you attempt to turn the volume up higher.
- When the AVLS switch is set to LIMIT, the playback sound may be distorted or unstable according to the music (especially bass boosted part). If this happens, turn down the volume.
- When the AVLS switch is set to NORM, you will be able to enjoy the full volume capability of your Walkman personal stereo.



## Specifications

### Power Requirements

3 V DC Batteries AA (R6) × 2  
External DC 3 V power sources

### Battery Life

(approximate hours when using the batteries specified below)

Battery	Playback
Sony Alkaline LR6 (SG)	16 hours
Sony R6P (SR)	4.5 hours

### Dimensions

111.5 x 89 x 34.1 mm (4½ x 3⅝ x 1⅜ in.) (w/h/d)  
incl. projecting parts

**Mass** 180 g (6.4 oz) incl. batteries

### Supplied Accessories

- Stereo headphones (1)
- Belt clip (1)

### Optional Accessories

- AC power adaptor AC-E30HG

Your dealer may not handle some of the optional accessories listed above. Please ask the dealer for detailed information.

Design and specifications are subject to change without notice.

# Precautions

## Notes on headphones

### Concerning Road Safety

Do not use headphones while driving, cycling, or operating any motorized vehicle. It may create a traffic hazard and is illegal in many areas. It can also be potentially dangerous to play your headsets at high volume while walking, especially at pedestrian crossings. You should exercise extreme caution or discontinue use in potentially hazardous situations.

### Preventing hearing damage

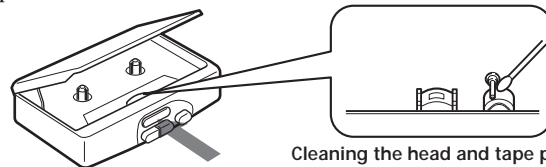
Do not use headphones at high volume. Hearing experts advise against continuous, loud and extended play. If you experience a ringing in your ears, reduce volume or discontinue use.

### Caring for others

Keep the volume at a moderate level. This will allow you to hear outside sounds and to be considerate to the people around you.

## Taking Care of Your Walkman

- Do not expose the Walkman to extreme temperatures, direct sunlight, moisture, sand, dust or mechanical shock. Never leave the Walkman in a car parked in the sun.
- Prolonged use may contaminate the tape head. If sound drop-out or excessive noise occurs, clean the head and tape path with alcohol.

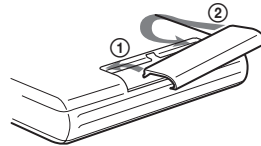


Cleaning the head and tape path

- Clean the headphones plug periodically for optimum sound.
- Do not use alcohol, benzine or thinner to clean the case.

## About the Battery Compartment Lid

If the battery compartment lid is detached by an accidental drop, excessive force etc., attach it as illustrated in the numbered order.



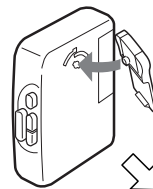
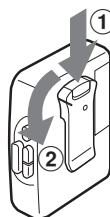
If you have any question or problem concerning your Walkman, please consult your nearest Sony dealer.

## Using the Belt Clip

With the supplied belt clip, you can wear your Walkman on a belt for convenient use.

### Removing the belt clip

### Attaching the belt clip



This warranty is valid only in the United States.

## LIMITED WARRANTY

## Free Manuals Download Website

<http://myh66.com>

<http://usermanuals.us>

<http://www.somanuals.com>

<http://www.4manuals.cc>

<http://www.manual-lib.com>

<http://www.404manual.com>

<http://www.luxmanual.com>

<http://aubethermostatmanual.com>

Golf course search by state

<http://golfingnear.com>

Email search by domain

<http://emailbydomain.com>

Auto manuals search

<http://auto.somanuals.com>

TV manuals search

<http://tv.somanuals.com>