

SONY®

4-135-644-11(1)

For customers who purchased this product in the USA
Please register this product on line at <http://www.sony.com/productregistration>. Proper registration will enable us to send you periodic mailings about new products, services, and other important announcements. Registering your product will also allow us to contact you in the unlikely event that the product needs adjustment or modification. Thank you.

WARNING

To reduce the risk of fire or electric shock, do not expose this apparatus to rain or moisture.

To reduce the risk of fire, do not cover the ventilation of the apparatus with newspapers, tablecloths, curtains, etc. And do not place lighted candles on the apparatus.

To reduce the risk of fire or electric shock, do not expose this apparatus to dripping or splashing, and do not place objects filled with liquids, such as vases, on the apparatus.

Do not install the appliance in a confined space, such as a bookcase or built-in cabinet.

Do not expose the batteries (battery pack or batteries installed) to excessive heat such as sunshine, fire or the like for a long time.

As the main plug is used to disconnect the unit from the mains, connect the unit to an easily accessible AC outlet. Should you notice an abnormality in the unit, disconnect the main plug from the AC outlet immediately.

You are cautioned that any changes or modifications not expressly approved in this manual could void your authority to operate this equipment.

CAUTION

Danger of explosion if battery is incorrectly replaced. Replace only with the same or equivalent type.



This symbol is intended to alert the user to the presence of uninsulated "dangerous voltage" within the product's enclosure that may be of sufficient magnitude to constitute a risk of electric shock to persons.



This symbol is intended to alert the user to the presence of important operating and maintenance (servicing) instructions in the literature accompanying the appliance.

INFORMATION

This equipment has been tested and found to comply with the limits for a Class B digital device, pursuant to Part 15 of the FCC Rules. These limits are designed to provide reasonable protection against harmful interference in a residential installation. This equipment generates, uses and can radiate radio frequency energy and, if not installed and used in accordance with the instructions, may cause harmful interference to radio communications. However, there is no guarantee that interference will not occur in a particular installation. If this equipment does cause harmful interference to radio or television reception, which can be determined by turning the equipment off and on, the user is encouraged to try to correct the interference by one or more of the following measures:

- Reorient or relocate the receiving antenna.
- Increase the separation between the equipment and receiver.
- Connect the equipment into an outlet on a circuit different from that to which the receiver is connected.
- Consult the dealer or an experienced radio/TV technician for help.

WARNING

- Replace the battery for the clock backup with a Sony CR2032 lithium battery. Use of another battery may present a risk of fire or explosion.
- Battery may explode if mistreated. Do not recharge, disassemble or dispose of in fire.
- Dispose of used battery promptly. Keep away from children.

Important Safety Instructions

- 1) Read these instructions.
- 2) Keep these instructions.
- 3) Heed all warnings.
- 4) Follow all instructions.
- 5) Do not use this apparatus near water.
- 6) Clean only with dry cloth.
- 7) Do not block any ventilation openings. Install in accordance with the manufacturer's instructions.
- 8) Do not install near any heat sources such as radiators, heat registers, stoves, or other apparatus (including amplifiers) that produce heat.
- 9) Do not defeat the safety purpose of the polarized or grounding-type plug. A polarized plug has two blades with one wider than the other. A grounding type plug has two blades and a third grounding prong. The wide blade or the third prong are provided for your safety. If the provided plug does not fit into your outlet, consult an electrician for replacement of the obsolete outlet.
- 10) Protect the power cord from being walked on or pinched particularly at plugs, convenience receptacles, and the point where they exit from the apparatus.
- 11) Only use attachments/accessories specified by the manufacturer.
- 12) Use only with the cart, stand, tripod, bracket, or table specified by the manufacturer, or sold with the apparatus. When a cart is used, use caution when moving the cart/apparatus combination to avoid injury from tip-over.



- 13) Unplug this apparatus during lightning storms or when unused for long periods of time.
- 14) Refer all servicing to qualified service personnel. Servicing is required when the apparatus has been damaged in any way, such as power-supply cord or plug is damaged, liquid has been spilled or objects have fallen into the apparatus, the apparatus has been exposed to rain or moisture, does not operate normally, or has been dropped.

For the state of california, USA only

Perchlorate Material –special handling may apply, See www.dtsc.ca.gov/hazardouswaste/perchlorate
Perchlorate Material: Lithium battery contains perchlorate

Features

- Large, easy to-see, 1.4 inch green LED.
- Dual alarm FM/AM Clock radio.
- Various types of alarms — buzzer, radio and melody.
- Automatic time set — When you plug the clock in for the first time, the current time will be shown in the display.
- Automatic Daylight Saving Time/Summer time adjustment.
- Date button to display month, day and year.
- Brightness control (High/Middle/Low).
- No Power No Problem™ alarm system to keep the clock and the alarm operating during a power interruption with a CR2032 battery installed.
- Extendable snooze — Snooze time can be extended from 10 up to 60 minutes.
- Progressive Alarm Speed (buzzer only).

Precautions

- Play the unit on the power source specified in "Specifications".
- To disconnect the AC power cord (mains lead), pull it out by the plug, not the cord.
- The unit is not disconnected from the AC power source (mains) as long as it is connected to the wall outlet, even if the unit itself has been turned off.
- The nameplate and important information concerning safety are located on the bottom exterior.
- Do not leave the unit in a location near a heat source such as a radiator or airduct, or in a place subject to direct sunlight, excessive dust, mechanical vibration, or shock.
- Allow adequate air circulation to prevent internal heat build-up. Do not place the unit on a surface (a rug, a blanket, etc.) or near materials (a curtain) which might block the ventilation holes.
- Should any solid object or liquid fall into the unit, unplug the unit and have it checked by qualified personnel before operating it any further.
- To clean the casing, use a soft cloth dampened with a mild detergent solution.

NOTES ON LITHIUM BATTERY

- Wipe the battery with a dry cloth to assure a good contact.
- Be sure to observe the correct polarity when installing the battery.
- Do not hold the battery with metallic tweezers, otherwise a short-circuit may occur.

If you have any questions or problems concerning your unit, please consult your nearest Sony dealer.

Troubleshooting

Should any problem occur with the unit, make the following simple checks to determine whether or not servicing is required.

If the problem persists, consult your nearest Sony dealer.

The clock flashes "AM 12:00".

- A power interruption occurred and the backup battery is low. Replace the battery. Remove the old battery and install a new one.

The buzzer, radio or melody alarm does not sound at the preset alarm time.

- Check that the buzzer, radio or melody alarm is activated (the ALARM A (or B) indicator lights up).

The radio alarm is activated but does not sound at the preset alarm time.

- Check that the volume is not set to minimum.

When daylight saving time begins, the clock does not employ the daylight saving time automatically.

- Make sure the clock is set correctly.
- Press and hold **DST** for at least 3 seconds to activate the automatic DST/summer time adjustment.

Specifications

Time display

12-hour System

Frequency range

Band	Frequency
FM	87.5 – 108 MHz
AM	530 – 1 710 kHz

Speaker

Approx. 6.6 cm (2 5/8 inches) dia., 8 Ω

Power output

180 mW (at 10% harmonic distortion)

Power requirements

120 V AC, 60 Hz

For power backup: 3 V DC, one CR2032 battery

Dimensions

Approx. 178.9 × 121.8 × 88.5 mm (w/h/d)
(7 1/8 × 4 7/8 × 3 1/2 inches) incl. projecting parts and controls

Mass

Approx. 638 g (1 lb 6.5 oz) incl. CR2032 battery

Design and specifications are subject to change without notice.

Operating Instructions

ICF-C414

DREAM MACHINE

Dream Machine is a trademark of Sony Corporation.



No Power No Problem is a trademark of Sony Corporation.



* 4 1 3 5 6 4 4 1 1 * (1)

©2009 Sony Corporation

Printed in China

<http://www.sony.net/>

SONY®

Portable Audio

LIMITED WARRANTY (U.S. Only)

Sony Electronics Inc. ("Sony") warrants this product against defects in material or workmanship for the time periods and as set forth below. Pursuant to this Limited Warranty, Sony will, at its option, (i) repair the product using new or refurbished parts or (ii) replace the product with a new or refurbished product. For purposes of this Limited Warranty, "refurbished" means a product or part that has been returned to its original specifications. **In the event of a defect, these are your exclusive remedies.**

Term: For a period of one (1) year from the original date of purchase of the product, Sony will, at its option, repair or replace with new or refurbished product or parts, any product or parts determined to be defective.

This Limited Warranty covers only the hardware components packaged with the Product. It does not cover technical assistance for hardware or software usage and it does not cover any software products whether or not contained in the Product; any such software is provided "AS IS" unless expressly provided for in any enclosed software Limited Warranty. Please refer to the End User License Agreements included with the Product for your rights and obligations with respect to the software.

Instructions: To obtain warranty service, you must deliver the product, freight prepaid, in either its original packaging or packaging affording an equal degree of protection to the Sony authorized service facility specified. **It is your responsibility to backup any data, software or other materials you may have stored or preserved on your unit. It is likely that such data, software, or other materials will be lost or reformatted during service and Sony will not be responsible for any such damage or loss.** A dated purchase receipt is required. For specific instructions on how to obtain warranty service for your product,

The Address of the Laredo Fulfillment Center is:

Laredo Fulfillment Center
10227 Crossroads Loop Suite B
Laredo, TX 78045

Visit Sony's Web Site:
www.sony.com/service

Or call the **Sony Customer Information Service Center**
1-800-222-SONY (7669)

For an accessory or part not available from your authorized dealer, call:

1-800-488-SONY (7669)

Repair / Replacement Warranty: This Limited Warranty shall apply to any repair, replacement part or replacement product for the remainder of the original Limited Warranty period or for ninety (90) days, whichever is longer. Any parts or product replaced under this Limited Warranty will become the property of Sony.

This Limited Warranty only covers product issues caused by defects in material or workmanship during ordinary consumer use; it does not cover product issues caused by any other reason, including but not limited to product issues due to commercial use, acts of God, misuse, limitations of technology, or modification of or to any part of the Sony product. This Limited Warranty does not cover Sony products sold AS IS or WITH ALL FAULTS or consumables (such as fuses or batteries). This Limited Warranty is invalid if the factory-applied serial number has been altered or removed from the product. This Limited Warranty is valid only in the United States.

LIMITATION ON DAMAGES: SONY SHALL NOT BE LIABLE FOR ANY INCIDENTAL OR CONSEQUENTIAL DAMAGES FOR BREACH OF ANY EXPRESS OR IMPLIED WARRANTY ON THIS PRODUCT.

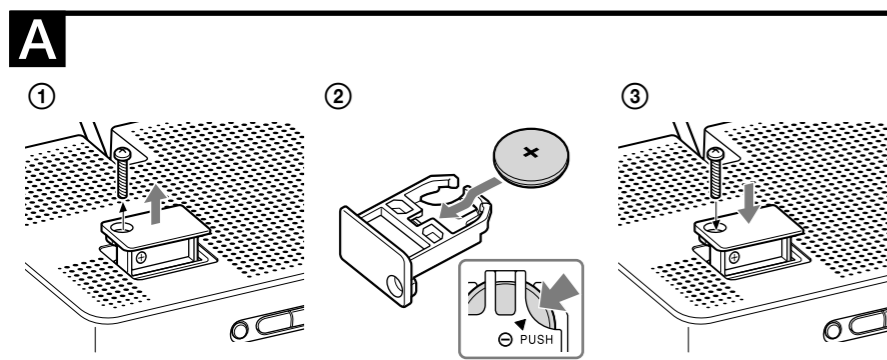
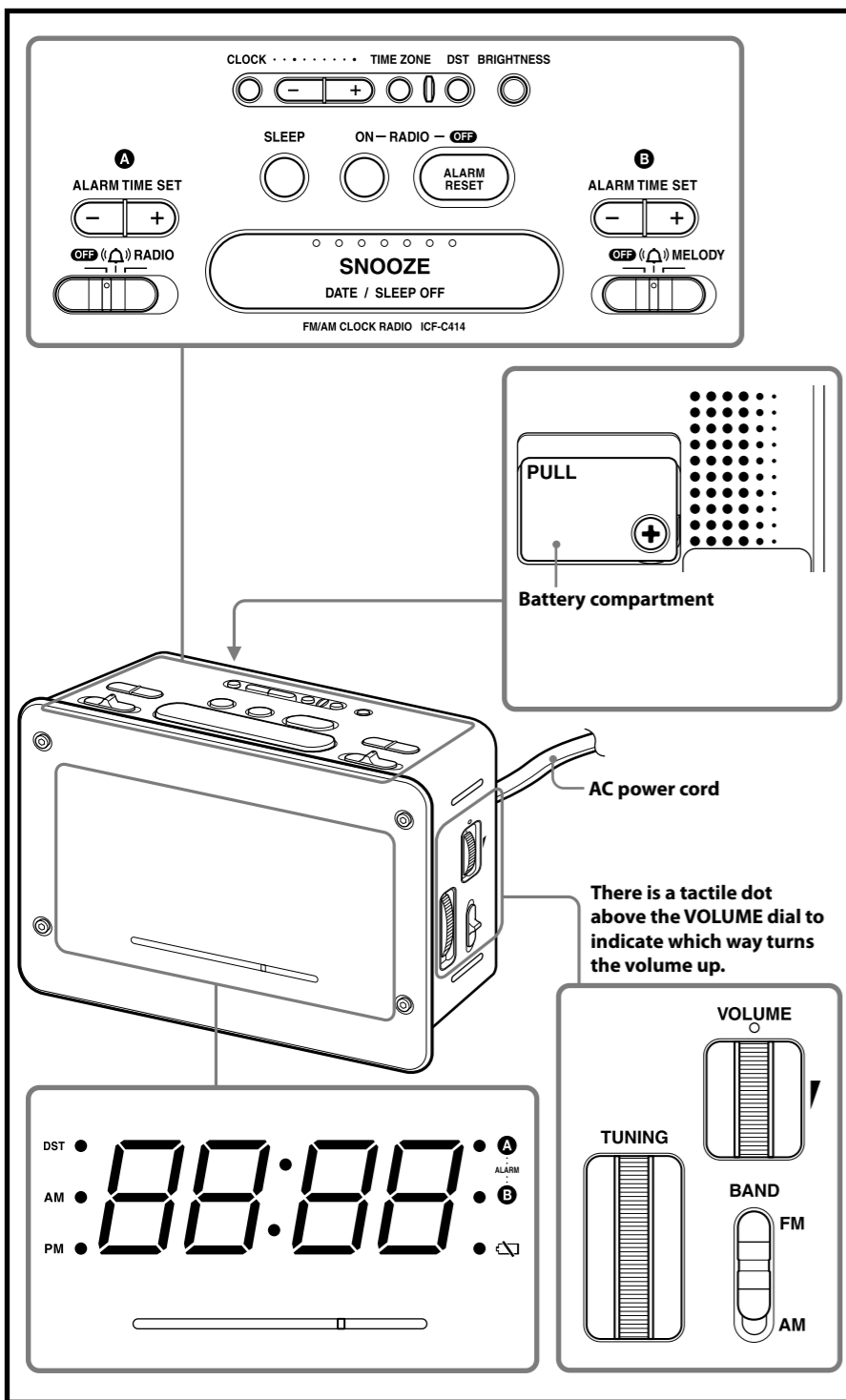
DURATION OF IMPLIED WARRANTIES: EXCEPT TO THE EXTENT PROHIBITED BY APPLICABLE LAW, ANY IMPLIED WARRANTY OF MERCHANTABILITY OR FITNESS FOR A PARTICULAR PURPOSE ON THIS PRODUCT IS LIMITED IN DURATION TO THE DURATION OF THIS WARRANTY.

Some states do not allow the exclusion or limitation of incidental or consequential damages, or allow limitations on how long an implied warranty lasts, so the above limitations or exclusions may not apply to you. This Limited Warranty gives you specific legal rights and you may have other rights which vary from state to state.

D455714605

This unit includes a preinstalled Sony Lithium battery (CR2032) as back-up power source for the clock, which is preset to EST (Eastern Standard Time) at the factory. And this battery is considered part of the product.

Download from Www.Somanuals.com. All Manuals Search And Download.



About the backup battery

To keep good time, as backup power source, this unit has one CR2032 battery inside of the unit in addition to the house current. The battery keeps the clock and the alarm operating in the event of a power interruption.

Knowing when to replace the battery

When the battery becomes weak, the “ ” indicator appears in the display. In the event of a power interruption when the battery is weak, the current time and alarm will be initialized. Replace the battery with a Sony CR2032 lithium battery. Use of another battery may present a risk of fire or explosion.

Installing and replacing the backup battery

1 Keep the AC plug connected to the AC outlet, remove the screw that secures the battery compartment at the rear of the unit using a screwdriver, and remove the battery compartment (See Fig. **A-1**).

2 Insert a new battery in the battery compartment with the side facing up. To remove the battery from the battery compartment, push it out from the side marked PUSH (See Fig. **A-2**).

3 Insert the battery compartment back into the unit and secure it with the screw (See Fig. **A-3**).

4 When you are replacing the battery, press **RADIO ON** to turn the “ ” indicator in the display.

Notes

- If you replace the battery, do not disconnect the AC plug from the AC outlet. Otherwise, the current time and alarm will be initialized.
- Be sure to observe the correct polarity when installing the battery.

Setting the clock for the first time

This unit is preset to the current date and time at the factory, and is powered by the back up battery. All you need to do is just plug it in and select your time zone.

1 Plug in the unit. First, the month and date appear, then the year, and then the current Eastern Standard/Daylight Time appears in the display.

2 Press **TIME ZONE**. Area number “2” appears in the display. If you live in the Eastern Time zone, you do not need to adjust the area setting.

Area number	Time zone
1	Atlantic Standard/Daylight Time
2	Eastern Standard/Daylight Time (default)
3	Central Standard/Daylight Time
4	Mountain Standard/Daylight Time
5	Pacific Standard/Daylight Time
6	Yukon Standard/Daylight Time
7	Hawaiian Standard/Daylight Time

3 Press **TIME ZONE** repeatedly until the desired number appears.

The display returns to the clock about 4 seconds after the operation is complete.

Note

During the shipment and your first use, a clock error may occur. In this case, refer to “Setting the clock and date” to set the correct time.

When daylight saving time (summer time) begins

This unit employs Automatic Daylight Saving Time/Summer Time adjustment. The DST indicator appears in the display at the beginning of the daylight saving time (summer time), and disappears at the end of it.

- Daylight saving time begins at: 2:00 AM on the second Sunday of March.
- Standard time begins at: 2:00 AM on the first Sunday of November.

To cancel the automatic DST/summer time adjustment and to set DST display manually

The automatic DST/summer time adjustment can be cancelled. Press and hold **DST** for at least 3 seconds while the clock is displayed.

A beep sounds, and “Aut → OFF” appears in the display to show that the automatic DST/summer time adjustment is cancelled. The display returns to the clock.

Notes

- Daylight Saving Time depends on the law in each country/region, and your area may not use it. In such a case, cancel the automatic DST/summer time adjustment before using the set and set the time manually as necessary.
- To activate the automatic DST/summer time adjustment again, press and hold **DST** for at least 3 seconds. A beep sounds, and “Aut → On” appears in the display to show that the automatic DST/summer time adjustment is activated. The display returns to the clock.
- To change the display to the daylight saving time (summer time) manually, see “To change the display to the daylight saving time (summer time) indication.”

Setting the clock and date

To change the setting manually, follow the procedure from step **1**.

1 Press **CLOCK** for at least 2 seconds. You will hear a beep and the year will start to flash in the display.
2 Press + or – until the correct year appears in the display.
3 Press **CLOCK**.
4 Repeat steps **2** and **3** to set the month, day and time. After setting the time, two short beeps sound and the clock starts from 0 seconds.

- Pressing and holding + or – changes the year, month or day rapidly. When setting the current time, time changes rapidly by 1 minute-increments up to 10 minutes, and then by 10 minute-increments.

- While setting the clock, you must perform each step within 65 seconds, or the clock setting mode will be cancelled.

To display the year and date

Press **SNOOZE/DATE/SLEEP OFF** once for the date, and within about 3 seconds press it again for the year.

The display shows the date or year for about 3 seconds and then changes back to the current time.

If you connect the AC plug to an AC outlet while this unit is powered from the backup power source, the current date and time appears in the following order (the same as when the unit is powered on after a power interruption). “month and date” (about 1 second) → “year” (about 1 second) → “current time”

To change the display to the daylight saving time (summer time) indication

Change the daylight saving time (summer time) adjustment setting according to the following procedures if you have cancelled the automatic DST/summer time adjustment.

Press **DST**.

The DST indicator appears in the display and the time indication changes to the daylight saving time (summer time).

To deactivate the daylight saving time (summer time) adjustment, press **DST** again.

Setting the brightness of the display

Three levels of brightness are available by pressing **BRIGHTNESS**.

High (default) → Middle → Low

Playing the radio

- 1** Press **RADIO ON** to turn on the radio.
- 2** Adjust the volume using **VOLUME**.
- 3** Select **BAND**.
- 4** Tune in to a station using **TUNING**.

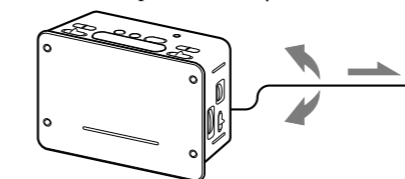
To turn off the radio

Press **RADIO OFF/ALARM RESET**.

Improving the reception

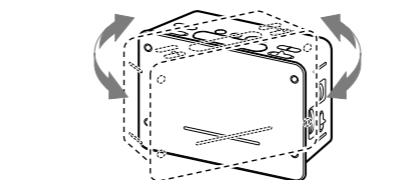
FM:

The AC power cord functions as an FM antenna. Extend the AC power cord fully to increase reception sensitivity.



AM:

Rotate the unit horizontally for optimum reception. A ferrite bar AM antenna is built-in to the unit.



Do not operate the unit over a steel desk or metal surface, as this may lead to interference of reception.

Setting the alarm

The dual function allows you to set two alarm programs (ALARM A and ALARM B). The alarm time can be set for each program and the alarm sound is selectable from buzzer, radio or melody.

Notes

- Before setting the alarm, make sure to set the clock (see “Setting the clock and date”).
- The factory set alarm time is “PM 12:00”.
- To set the radio alarm, first tune in to a station and adjust the volume (see “Playing the radio”).

To set the alarm time

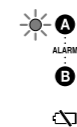
1 Set **ALARM A (or B)** to the desired alarm sound () (**buzzer**), **RADIO** or **MELODY**).

The alarm time appears for a few seconds, and then the ALARM A (or B) indicator lights up in the display. (It does not appear when the switch is set to **OFF**.)

When you set the alarm to **MELODY**, the alarm sounds the melody- “Spring” from “The Four Seasons” by Antonio Lucio Vivaldi.

2 Press **ALARM TIME SET A (or B)** + or – to set the desired time.

Each press of **ALARM TIME SET A (or B)** + or – changes the indication by 1 minute. If you press and hold **ALARM TIME SET A (or B)** + or –, the alarm time goes forward (or backward) by 1 minute up to 10 minutes, and then by 10 minutes increments. While setting the alarm time, the ALARM A (or B) indicator flashes in the display. The following example is when setting the ALARM A.



When the alarm time setting is complete, the display returns to the clock after a few seconds and the ALARM A (or B) indicator changes from flashing to fully lit.

- While **ALARM A (or B)** is set to , **RADIO** or **MELODY**, the alarm time setting can be changed by **ALARM TIME SET A (or B)** + or –. One press of **ALARM TIME SET A (or B)** + or – displays the alarm time for about 4 seconds. By pressing **ALARM TIME SET A (or B)** + or – while the alarm time appears in the display, the alarm time will be changed.
- For the buzzer alarm, the beeping of the alarm becomes more rapid after every few seconds in three progressive stages.
- The ALARM A (or B) indicator flashes in the display while:
 - The alarm time appears in the display.
 - The alarm sounds.
 - The snooze function is turned on.
- The alarm time setting cannot be changed if **ALARM A (or B)** is set to **OFF**. If you press **ALARM TIME SET A (or B)** + or –, “OFF” appears in the display for about 0.5 seconds.
- If a second alarm sounds during a first (or the snooze function is active), the second alarm takes priority.
- **CLOCK**, **DST**, and **TIME ZONE** are unavailable while the alarm sounds or when the snooze function is turned on.
- The alarm function works as usual at the first and last day of daylight saving time (summer time). As a result, if the automatic DST/summer time adjustment is set and the alarm is set at a time skipped when the daylight saving time begins, the alarm is skipped; if the alarm is set at a time overlapping when daylight saving time ends, the alarm will sound twice.
- If the same alarm time is set for both ALARM A and B, the ALARM A takes priority.

To doze for a few more minutes

Press **SNOOZE/DATE/SLEEP OFF**.

The alarm sound stops but will automatically come on again after about 10 minutes. Each time you press **SNOOZE/DATE/SLEEP OFF**, the snooze time changes as follows:

10 → 20 → 30 → 40 → 50 → 60

The maximum snooze time is 60 minutes. The display shows the snooze time for about 4 seconds and returns to show the current time. When you press **SNOOZE/DATE/SLEEP OFF** after the current time appears, the snooze time starts from 10 minutes again.

To stop the Alarm

Press **RADIO OFF/ALARM RESET** to turn off the alarm.

The alarm will come on again at the same time the next day.

If **RADIO OFF/ALARM RESET** is not pressed, the alarm sounds continuously for about 60 minutes, and then it will stop automatically.

To deactivate the Alarm

Set **ALARM A (or B)** to **OFF**.

The ALARM A (or B) indicator disappears from the display.

Note on alarm in the event of a power interruption

In the event of a power interruption, the alarm functions work until the battery is empty.

However, the following functions differ:

- Nothing will appear on the display.
- When the alarm sound is set to radio, it will change to buzzer automatically.
- If the power returns while the alarm sounds, the alarm sounds continuously for about 60 minutes (or until turned off).
- The alarm buzzes for about one minute, stops temporarily, and will buzz again after about five minutes if neither **SNOOZE/DATE/SLEEP OFF** or **RADIO OFF/ALARM RESET** are pressed while the alarm is buzzing. If the alarm buzzes and stops (either automatically after 1 minute or by pressing **SNOOZE/DATE/SLEEP OFF**) five times, the alarm is automatically reset in the case of a power interruption. The alarm will buzz for 30 minutes (or until turned off) after power is resumed if the power is resumed within 60 minutes from the alarm time.
- If you press **SNOOZE/DATE/SLEEP OFF** while the alarm sounds, the snooze time is set to 10 minutes. During a power interruption, snooze time cannot be set to more than 10 minutes.
- If the “ ” indicator appears in the display, the alarm will not work in the event of a power interruption. Replace the battery if the “ ” indicator appears.

Setting the sleep timer

You can fall asleep to the radio using the built-in sleep timer that turns off the radio automatically after a preset duration.

Press **SLEEP**.

The radio turns on. You can set the sleep timer to 90, 60, 30, or 15 minutes. Each press changes the display as follows:

90 → 60 → 30 → 15
 OFF ←

Two short beeps sound when the display returns to “90”. The radio will play for the duration you set, then shut off.

To turn off the radio before the preset time

Press **RADIO OFF/ALARM RESET** or **SNOOZE/DATE/SLEEP OFF**.

To use both sleep timer and alarm

You can fall asleep to the radio and also be awakened by the buzzer, radio or melody alarm at the preset time.

- 1** Set the alarm. (See “Setting the alarm.”)
- 2** Set the sleep timer. (See “Setting the sleep timer.”)

Free Manuals Download Website

<http://myh66.com>

<http://usermanuals.us>

<http://www.somanuals.com>

<http://www.4manuals.cc>

<http://www.manual-lib.com>

<http://www.404manual.com>

<http://www.luxmanual.com>

<http://aubethermostatmanual.com>

Golf course search by state

<http://golfingnear.com>

Email search by domain

<http://emailbydomain.com>

Auto manuals search

<http://auto.somanuals.com>

TV manuals search

<http://tv.somanuals.com>