

FM/AM Clock Radio

Operating Instructions

DREAM MACHINE

Dream Machine is a trademark of Sony Corporation.

ICF-C490

Sony Corporation © 2002 Printed in China

<http://www.sony.net/>

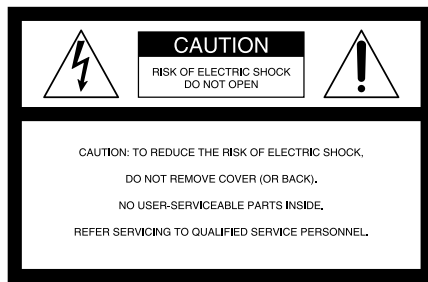
For customers in the USA

Please register this product on line at <http://www.sony.com/productregistration>.

Proper registration will enable us to send you periodic mailings about new products, services, and other important announcements. Registering your product will also allow us to contact you in the unlikely event that the product needs adjustment or modification. Thank you.

WARNING

To prevent fire or shock hazard, do not expose the unit to rain or moisture.



This symbol is intended to alert the user to the presence of uninsulated "dangerous voltage" within the product's enclosure that may be of sufficient magnitude to constitute a risk of electric shock to persons.



This symbol is intended to alert the user to the presence of important operating and maintenance (servicing) instructions in the literature accompanying the appliance.

* The graphical symbols are on the bottom enclosure.

WARNING

You are cautioned that any changes or modifications not expressly approved in this manual could void your authority to operate this equipment.

IMPORTANT SAFEGUARDS

For your protection, please read these safety instructions completely before operating the appliance, and keep this manual for future reference. Carefully observe all warnings, precautions and instructions on the appliance and in the operating instructions, and adhere to them.

INSTALLATION

Water and Moisture

Do not use powerline operated appliances near water - for example, near a bathtub, washbowl, kitchen sink, or laundry tub, in a wet basement, or near a swimming pool, etc.

Heat

Do not place the appliance near or over a radiator or heat register, or where it is exposed to direct sunlight.

Ventilation

The slots and openings in the cabinet are provided for necessary ventilation. To ensure reliable operation of the appliance, and to protect it from overheating, these slots and openings must never be blocked or covered.

-Never cover the slots and openings with a cloth or other materials.

-Never block the slots and openings by placing the appliance on a bed, sofa, rug or other similar surface.

-Never place the appliance in a confined space, such as a bookcase, or built-in cabinet, unless proper ventilation is provided.

Accessories

Do not place the appliance on an unstable cart, stand, tripod, bracket, or table. The appliance may fall, causing serious injury to a child or an adult, and serious damage to the appliance. Use only a cart, stand, tripod, bracket, or table recommended by Sony.

-An appliance and cart combination should be moved with care. Quick stops, excessive force, and uneven surfaces may cause the appliance and cart combination to overturn.

Wall or Ceiling Mounting

If your appliance can be mounted to a wall or ceiling, mount it only as recommended by Sony.

USE

Power Source

This appliance should be operated only from the type of power source indicated on the marking label. If you are not sure of the type of electrical power supplied to your home, consult your dealer or local power company. For those appliances designed to operate from battery power, or other sources, refer to the operating instructions.

Grounding or Polarization

This appliance is equipped with a polarized AC power cord plug (a plug having one blade wider than the other), or with a three-wire grounding type plug (a plug having a third pin for grounding). Follow the instructions below:

-For the appliance with a polarized AC power cord plug:

This plug will fit into the power outlet only one way. This is a safety feature. If you are unable to insert the plug fully into the outlet, try reversing the plug. If the plug should still fail to fit, contact your electrician to have a suitable outlet installed. Do not defeat the safety purpose of the polarized plug by forcing it in.

-For the appliance with a three-wire grounding type AC plug:

This plug will only fit into a grounding-type power outlet. This is a safety feature. If you are unable to insert the plug into the outlet, contact your electrician to have a suitable outlet installed. Do not defeat the safety purpose of the grounding plug.

Overloading

Do not overload wall outlets, extension cords or convenience receptacles beyond their capacity, since this can result in fire or electric shock.

When not in use

Unplug the power cord of the appliance from the outlet when left unused for a long period of time. To disconnect the cord, pull it out by grasping the plug. Never pull the plug out by the cord.

Power-Cord Protection

Route the power cord so that it is not likely to be walked on or pinched by items placed upon or against them, paying particular attention to the plugs, receptacles, and the point where the cord exits from the appliance.

Lightning

For added protection for this appliance during a lightning storm, or when it is left unattended and unused for long periods of time, unplug it from the wall outlet and disconnect the antenna or cable system. This will prevent damage to the appliance due to lightning and powerline surges.

Object and Liquid Entry

Never push objects of any kind into the appliance through openings as they may touch dangerous voltage points or short out parts that could result in a fire or electric shock. Never spill liquid of any kind on the appliance.

Cleaning

Unplug the appliance from the wall outlet before cleaning or polishing it. Do not use liquid cleaners or aerosol cleaners. Use a cloth lightly dampened with water for cleaning the exterior of the appliance. Clean the appliance only as recommended by Sony.

Attachments

Do not use attachments not recommended by Sony, as they may cause hazards.

ANTENNAS

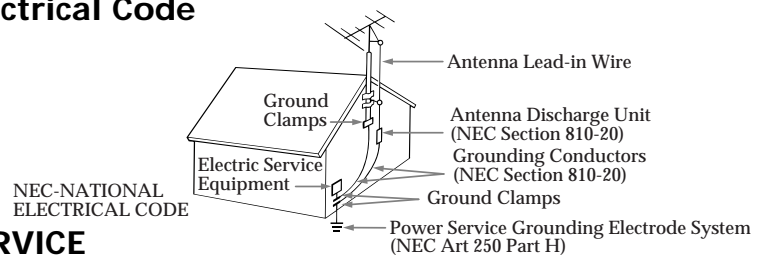
Outdoor Antenna Grounding

If an outdoor antenna or cable system is installed, follow the precautions below.

An outdoor antenna system should not be located in the vicinity of overhead power lines or other electric light or power circuits, or where it can come in contact with such power lines or circuits. WHEN INSTALLING AN OUTDOOR ANTENNA SYSTEM, EXTREME CARE SHOULD BE TAKEN TO KEEP FROM CONTACTING SUCH POWER LINES OR CIRCUITS AS CONTACT WITH THEM IS ALMOST INVARIABLY FATAL.

Be sure the antenna system is grounded so as to provide some protection against voltage surges and built-up static charges. Section 810 of the National Electrical Code provides information with respect to proper grounding of the mast and supporting structure, grounding of the lead-in wire to an antenna discharge unit, size of grounding conductors, location of antenna-discharge unit, connection to grounding electrodes, and requirements for the grounding electrode.

Antenna Grounding According to the National Electrical Code



SERVICE

Damage Requiring Service

Unplug the appliance from the wall outlet and refer servicing to qualified service personnel under the following conditions:

-When the power cord or plug is damaged or frayed.

-If liquid has been spilled or objects have fallen into the appliance.

-If the appliance has been exposed to rain or water.

-The appliance does not appear to operate normally or exhibits a marked change in performance.

-This indicates a need for service.

-If the appliance does not operate normally when following the operating instructions, adjust only those controls that are specified in the operating instructions. Improper adjustment of other controls may result in damage and will often require extensive work

by a qualified technician to restore the appliance to normal operation.

-If the appliance has been subject to excessive shock by being dropped, or the cabinet has been damaged.

Servicing

Do not attempt to service the appliance yourself as opening or removing covers may expose you to dangerous voltage or other hazards.

Refer all servicing to qualified service personnel.

Replacement parts

When replacement parts are required, be sure the service technician has used replacement parts specified by Sony that have the same characteristics as the original parts.

Unauthorized substitutions may result in fire, electric shock, or other hazards.

Safety Check

Upon completion of any service or repairs to the appliance, ask the service technician to perform routine safety checks (as specified by Sony) to determine that the appliance is in safe operating condition.

SONY®

Tape Cassette Player/Recorder/CD Player/Mini Disc
DAT/Radio/Head Phone/Speaker/MIC/Personals

LIMITED WARRANTY

Portable Audio

Sony Electronics Inc. ("Sony") warrants this Product (including any accessories) against defects in material or workmanship as follows:

1. For a period of one (1) year from the date of purchase if this Product is determined to be defective, Sony will repair or replace the Product, at its option, at no charge the defective unit. After this one (1) year period, you must pay for the replacement unit. This warranty does not cover costs incurred in connection with the removal and re-installation of radios, speakers or accessories, nor does it cover any other contingent expenses.

2. To obtain warranty service, you must take the Product, or deliver the Product freight prepaid, in either its original packaging or packaging affording an equal degree of protection, to any Factory Sony Service facility or to the Laredo Fulfillment Center. See below for additional information.

This warranty does not cover customer instruction, installation, set up adjustments or signal reception problems.

This warranty does not cover cosmetic damage or damage due to acts of God, accident, misuse, abuse, negligence, commercial use, or modification of, or to any part of the Product, including the antenna. This warranty does not cover damage due to improper operation or maintenance, connection to improper voltage supply, or attempted repair by anyone other than a facility authorized by Sony to service the Product. This warranty does not cover Products sold AS IS or WITH ALL FAULTS, or consumables (such as fuses or batteries). This warranty is valid only in the United States.

Proof of purchase in the form of a bill of sale or receipted invoice which is evidence that the unit is within the Warranty period must be presented to obtain warranty service.

This warranty is invalid if the factory applied serial number has been altered or removed from the Product.

REPAIR OR REPLACEMENT AS PROVIDED UNDER THIS WARRANTY IS THE EXCLUSIVE REMEDY OF THE CONSUMER. SONY SHALL NOT BE LIABLE FOR ANY INCIDENTAL OR CONSEQUENTIAL DAMAGES FOR BREACH OF ANY EXPRESS OR IMPLIED WARRANTY ON THIS PRODUCT. EXCEPT TO THE EXTENT PROHIBITED BY APPLICABLE LAW, ANY IMPLIED WARRANTY OF MERCHANTABILITY OR FITNESS FOR A PARTICULAR PURPOSE ON THIS PRODUCT IS LIMITED IN DURATION TO THE DURATION OF THIS WARRANTY.

Some states do not allow the exclusion or limitation of incidental or consequential damages, or allow limitations on how long an implied warranty lasts, so the above limitations or exclusions may not apply to you. In addition, if you enter into a service contract with the Sony Partnership within 90 days of the date of sale, the limitation on how long an implied warranty lasts does not apply to you. This warranty gives you specific legal rights, and you may have other rights which vary from state to state.

The Address of the Laredo Fulfillment Center is:

Laredo Fulfillment Center
10227 Crossroads Loop Suite B
Laredo, TX 78045

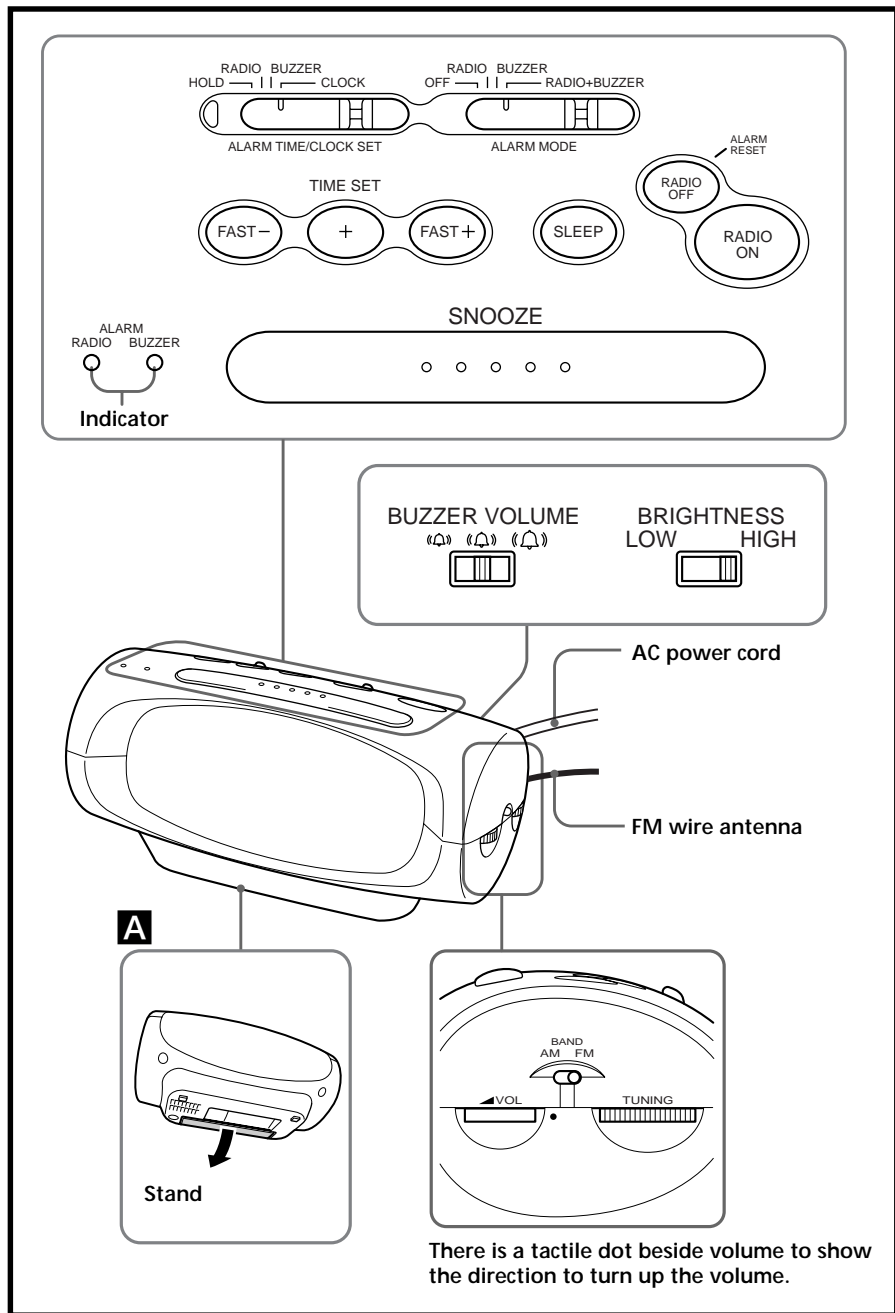
For your convenience, Sony Electronics Inc. has established telephone numbers for frequently asked questions:

To locate the servicer or dealer nearest you, or for service assistance or resolution of a service problem, or for product information or operation, call:

Sony Customer Information Service Center
1-(800)-222-7669
Or visit the Sony Web Site:
www.sony.com

For an accessory or part not available from your authorized dealer, call:

1-(800)-488-SONY (7669)



Before You Begin

Thank you for choosing the Sony Dream Machine! The Dream Machine will give you many hours of reliable service and listening pleasure. Before operating the Dream Machine, please read these instructions thoroughly and retain them for future reference.

Features

- Easy to-see Large 1.4 inch green LED
- Alarm Vol. Control (Super Loud/Loud/Quiet)
- Display Angle Adjuster
- Dual alarm
- Easy to-see alarm indicator
- Forward/reverse time setting
- Brightness control (High, Low)
- Full power backup to keep the clock and the alarm (radio and buzzer) operating during a power interruption with a 6F22 battery (not supplied) installed.

Installing the Battery

To keep good time, your Dream Machine needs one 6F22 battery (not supplied), in addition to house current. The battery keeps the clock operating in the event of a power interruption. Before setting the time on your Dream Machine, open the lid at the bottom of the unit, install the battery with correct polarity and then close the lid. After a power interruption, the displayed time may not be always correct (It may gain or lose about 10 minutes per hour).

Knowing When to Replace the Battery

To check the battery power, unplug the power cord from the wall outlet and plug it in again after a few minutes. If the displayed time is incorrect, replace the battery with a new one.

Setting Up the Stand (See Fig. A)

Lift up the stand at the bottom.

Setting the Clock

To control the visibility of the display, set **BRIGHTNESS** for the display to **HIGH** or **LOW** according to your preference.

- 1 Plug in the clock radio. The display will flash "AM 12:00".
- 2 Set the **ALARM TIME/CLOCK SET** switch to **CLOCK**.
- 3 Press **FAST+**, **FAST-** or **+** to adjust the time. When you press **FAST+**, the time is raised rapidly. When you press **FAST-**, the time is lowered rapidly. When you press **+**, the time is raised in one-minute steps.
- 4 Set the **ALARM TIME/CLOCK SET** switch to **HOLD**. Make sure that the **ALARM TIME/CLOCK SET** switch is set to **HOLD**. When it is set to **HOLD**, you cannot see the red label underneath. Otherwise, the displayed time might be changed if **FAST+**, **FAST-** or **+** happens to be pressed.

To display minute and second, press **SNOOZE**. Example: When the current time is 7:15:10, the display will become:

7:15 → 5:10

Lower of minute digit Second digits

The display returns to the current time when you release **SNOOZE**.

To adjust the time exactly to the second, press **+** briefly with the time signal.

Playing the Radio

- 1 Press **RADIO ON** to turn on the radio and adjust **VOL** (volume).
- 2 Select **FM** or **AM** and tune in to a station using **TUNING**.

To turn off the radio

Press **ALARM RESET•RADIO OFF**.

Improving the Reception

FM: Extend the FM wire antenna fully to improve FM reception.

AM: Rotate the unit horizontally for optimum reception. A ferrite bar antenna is built into the unit.

Setting the Alarm

This radio is equipped with 3 alarm modes – **RADIO**, **BUZZER** and **RADIO+BUZZER**. Before setting the alarm, make sure to set the clock (see "Setting the Clock").

To set the radio alarm, first tune in to a station and adjust the volume.

- 1 Set the **ALARM TIME/CLOCK SET** switch to **RADIO** or **BUZZER**.
- 2 Press **FAST+**, **FAST-** or **+** to select the desired time. When you press **FAST+**, the time is raised rapidly. When you press **FAST-**, the time is lowered rapidly. When you press **+**, the time is raised in one-minute steps.
- 3 Set the **ALARM TIME/CLOCK SET** switch to **HOLD**. Make sure that the **ALARM TIME/CLOCK SET** switch is set to **HOLD** after setting the clock. When it is set to **HOLD**, you cannot see the red label underneath.
- 4 Set the **ALARM MODE** switch to **RADIO**, **BUZZER** or **RADIO+BUZZER**. The **ALARM RADIO** or **ALARM BUZZER** indicator lights up. When you set both alarm times, both **ALARM RADIO** and **ALARM BUZZER** indicators light up.

The alarm will come on at the preset time and will automatically turn itself off after about 59 minutes. If the same alarm time is set for both **RADIO** and **BUZZER**, **RADIO** will take priority.

To check the alarm setting

Set the **ALARM TIME/CLOCK SET** switch to **RADIO** or **BUZZER**.

To Doze for a Few More Minutes

Press **SNOOZE**.

The radio or buzzer turns off but will automatically come on again after about 6 minutes. You can repeat this process as many times as you like.

To Stop the Alarm

Press **ALARM RESET•RADIO OFF** to turn off the alarm.

The alarm will come on again at the same time the next day.

To Deactivate the Alarm

Set the **ALARM MODE** switch to **OFF**.

ALARM RADIO, **ALARM BUZZER** or both indicators will be turned off.

To Adjust the Alarm Level (BUZZER VOLUME)

Adjust the loudness of the alarm by setting **BUZZER VOLUME** to Ⓚ (Quiet), Ⓛ (Loud), or Ⓢ (Super Loud).

Note

If you select the **RADIO+BUZZER** mode, set the **BUZZER** alarm time earlier than the **RADIO** alarm time, and then use the **SNOOZE** button to turn off the buzzer, the radio will not come on even if the **RADIO** alarm time comes during the snooze period; only the buzzer will come back on after the snooze period is over.

Setting the Sleep Timer

Enjoy falling asleep to the radio using the built-in sleep timer.

Press **SLEEP**.

The radio turns on. You can set the sleep timer to durations up to 59 minutes. When you keep pressing **SLEEP**, the time is lowered in one-minute steps.

When you press **FAST+** or **FAST-** while holding down **SLEEP**, the time is changed rapidly. When you press **+** while holding down **SLEEP**, the time is raised in one-minute steps. The radio will play for the time you set, then turn off.

To turn off the radio before the preset time Press **ALARM RESET•RADIO OFF**.

Precautions

- Operate the unit on the power source specified in "Specifications".
- To disconnect the power cord (mains lead), pull it out by the plug, not the cord.
- Do not leave the unit in a location near a heat source such as a radiator or air duct, or in a place subject to direct sunlight, excessive dust, mechanical vibration, or shock.
- Allow adequate air circulation to prevent internal heat build-up. Do not place the unit on a surface (a rug, a blanket, etc.) or near materials (a curtain) which might block the ventilation holes.
- Should any solid object or liquid fall into the unit, unplug the unit and have it checked by a qualified personnel before operating it any further.
- To clean the casing, use a soft cloth dampened with a mild detergent solution.

Battery Warning

When the unit will be left unplugged for a long time, remove the battery to avoid undue battery discharge and damage to the unit from battery leakage.

If you have any questions or problems concerning your unit, please consult your nearest Sony dealer.

Specifications

Time display

12-hour system

Frequency range

FM : 87.5 - 108 MHz

AM : 530 - 1 710 kHz

Speaker

Approx. 6.6 cm ($2\frac{5}{8}$ inches) dia. 8 Ω

Power output

120 mW (at 10 % harmonic distortion)

Power requirements

120 V AC, 60 Hz

For power backup: 9 V DC, one 6F22 battery

Battery life

Approx. 9 hours (for clock and alarm backup)

using Sony 006P (6F22) battery

Dimensions

Approx. 200 × 94 × 113 mm (w/h/d)

($7\frac{7}{8}$ × $3\frac{3}{4}$ × $4\frac{1}{2}$ inches) not incl. projecting parts and controls

Mass

Approx. 645 g (1 lb 6.75 oz) not incl. battery

Design and specifications are subject to change without notice.

Free Manuals Download Website

<http://myh66.com>

<http://usermanuals.us>

<http://www.somanuals.com>

<http://www.4manuals.cc>

<http://www.manual-lib.com>

<http://www.404manual.com>

<http://www.luxmanual.com>

<http://aubethermostatmanual.com>

Golf course search by state

<http://golfingnear.com>

Email search by domain

<http://emailbydomain.com>

Auto manuals search

<http://auto.somanuals.com>

TV manuals search

<http://tv.somanuals.com>