

# TV/WEATHER/FM/AM CD Kitchen Clock Radio

## ICF-CD553RM

### Operating Instructions

### Owner's Record

The model number and the serial number are located on the top. Record the serial number in the space provided below. Refer to them whenever you call upon your Sony dealer regarding this product.

Model No. ICF-CD553RM

Serial No. \_\_\_\_\_

For customers who purchased this product in the USA  
Please register this product on line at  
<http://www.sony.com/productregistration>.  
Proper registration will enable us to send you periodic mailings about new products, services, and other important announcements.  
Registering your product will also allow us to contact you in the unlikely event that the product needs adjustment or modification. Thank you.



Printed on 100% recycled paper using VOC  
(Volatile Organic Compound)-free  
vegetable oil based ink.

© 2004 Sony Corporation Printed in China

<http://www.sony.net/>

**SONY®** Tape Cassette Player/Recorder/CD Player/Mini Disc  
DAT/Radio/Head Phone/Speaker/MIC/Personals

Portable Audio

## LIMITED WARRANTY

Sony Electronics Inc. ("Sony") warrants this Product (including any accessories) against defects in material or workmanship as follows:

- LABOR:** For a period of one (1) year from the date of purchase, if this Product is determined to be defective, Sony will repair or replace the Product, at its option, at no charge, or pay the labor charges to any Sony authorized service facility. After the Warranty Period, you must pay for all labor charges.
- PARTS:** In addition, Sony will supply, at no charge, new or rebuilt replacements in exchange for defective parts for a period of one (1) year. After the warranty period, you must pay for all parts costs.
- ACCESSORIES:** Parts and labor for all accessories are for one (1) year.

To obtain warranty service, you must take the Product, or deliver the Product freight prepaid, in either its original packaging or packaging affording an equal degree of protection, to any authorized Sony service facility.

This warranty does not cover customer instruction, installation, set up adjustments or signal reception problems.

This warranty does not cover cosmetic damage or damage due to acts of God, accident, misuse, abuse, negligence, commercial use, or modification of, or to any part of the Product, including the antenna. This warranty does not cover damage due to improper operation or maintenance, connection to improper voltage supply, or attempted repair by anyone other than a facility authorized by Sony to service the Product. This warranty does not cover Products sold AS IS or WITH ALL FAULTS, or consumables (such as fuses or batteries). This warranty is valid only in the United States.

Proof of purchase in the form of a bill of sale or receipted invoice which is evidence that the unit is within the Warranty period must be presented to obtain warranty service.

This warranty is invalid if the factory applied serial number has been altered or removed from the Product.

REPAIR OR REPLACEMENT AS PROVIDED UNDER THIS WARRANTY IS THE EXCLUSIVE REMEDY OF THE CONSUMER. SONY SHALL NOT BE LIABLE FOR ANY INCIDENTAL OR CONSEQUENTIAL DAMAGES FOR BREACH OF ANY EXPRESS OR IMPLIED WARRANTY ON THIS PRODUCT, EXCEPT TO THE EXTENT PROHIBITED BY APPLICABLE LAW, ANY IMPLIED WARRANTY OF MERCHANTABILITY OR FITNESS FOR A PARTICULAR PURPOSE ON THIS PRODUCT IS LIMITED IN DURATION TO THE DURATION OF THIS WARRANTY.

Some states do not allow the exclusion or limitation of incidental or consequential damages, or allow limitations on how long an implied warranty lasts, so the above limitations or exclusions may not apply to you. In addition, if you enter into a service contract with the Sony Partnership within 90 days of the date of sale, the limitation on how long an implied warranty lasts does not apply to you. This warranty gives you specific legal rights, and you may have other rights which vary from state to state.

For your convenience, Sony Electronics Inc. has established telephone numbers for frequently asked questions:

To locate the **servicer or dealer** nearest you, or for service assistance or resolution of a service problem, or for product information or operation, call:

**Sony Customer Information Services Center**  
1-800-222-7669  
or visit the Sony Web Site:  
[www.sony.com](http://www.sony.com)

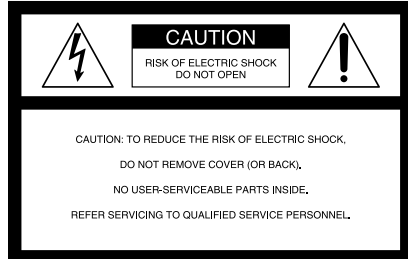
For an accessory or part not available from your authorized dealer, call:

1-800-488-SONY (7669)

D 455714502

### WARNING

To prevent fire or shock hazard, do not expose the unit to rain or moisture.  
To avoid electrical shock, do not open the cabinet. Refer servicing to qualified personnel only.  
Do not install the appliance in a confined space, such as a bookcase or built-in cabinet.  
To prevent fire or shock hazard, do not place objects filled with liquids, such as vases, on the apparatus.



This symbol is intended to alert the user to the presence of uninsulated "dangerous voltage" within the product's enclosure that may be of sufficient magnitude to constitute a risk of electric shock to persons.

This symbol is intended to alert the user to the presence of important operating and maintenance (servicing) instructions in the literature accompanying the appliance.

\* The graphical symbols are at the top of the unit.

### INFORMATION

This equipment has been tested and found to comply with the limits for a Class B digital device, pursuant to Part 15 of the FCC Rules. These limits are designed to provide reasonable protection against harmful interference in a residential installation. This equipment generates, uses, and can radiate radio frequency energy and, if not installed and used in accordance with the instructions, may cause harmful interference to radio communications. However, there is no guarantee that interference will not occur in a particular installation. If this equipment does cause harmful interference to radio or television reception, which can be determined by turning the equipment off and on, the user is encouraged to try to correct the interference by one or more of the following measures:

- Reorient or relocate the receiving antenna.
- Increase the separation between the equipment and receiver.
- Connect the equipment into an outlet on a circuit different from that to which the receiver is connected.
- Consult the dealer or an experienced radio/ TV technician for help.

If you have any questions about this product, you may call:

Sony Customer Information Services Center  
1-800-222-7669 or <http://www.sony.com>

Declaration of Conformity	
Trade Name:	SONY
Model:	ICF-CD553RM
Responsible Party:	Sony Electronics Inc.
Address:	16450 W. Bernardo Dr, San Diego, CA 92127 USA
Telephone Number:	858-942-2230

This device complies with Part 15 of the FCC Rules. Operation is subject to the following two conditions: (1) This device may not cause harmful interference, and (2) this device must accept any interference received, including interference that may cause undesired operation.

You are cautioned that any changes or modifications not expressly approved in this manual could void your authority to operate this equipment.

**CAUTION**  
The use of optical instruments with this product will increase eye hazard.

### Features

- Super Slim Interior Oriented Design
- Voice Memo Function
- MEGA Xpand function to get the effect of expansion of the sound field
- TV/WEATHER/FM/AM Digital Tuner
- Easy Set, One Touch cooking timer
- Magnetic Remote Commander

### Precautions

- Operate the unit on the power source specified in the "Specifications."
- To disconnect the power cord (mains lead), pull it out by the plug, not the cord.
- Do not leave the unit in a location near a heat source such as a radiator or airduct, or in a place subject to direct sunlight, excessive dust, mechanical vibration, or shock.
- Allow adequate air circulation to prevent internal heat build-up. Do not place the unit on a surface (a rug, a blanket, etc.) or near materials (a curtain) which might block the ventilation holes.
- Should any solid object or liquid fall into the unit, unplug the unit and have it checked by a qualified personnel before operating it any further.
- To clean the casing, use a soft cloth dampened with a mild detergent solution.

If you have any questions or problems concerning your unit, please consult your nearest Sony dealer.

### Troubleshooting

Should any problem occur with the unit, make the following checks to determine whether or not servicing is required. If the problem persists, consult the nearest Sony dealer.

**The clock does not show the correct time.**

- Has an electrical power outage lasting more than one minute occurred?

**The CD player does not operate.**

- Did you close the disc tray?
- Did you place the disc correctly?  
The disc should be placed with the labeled side up.
- Dusty or defective disc — Clean the disc with an optional cleaning cloth. Wipe the disc from the center out.
- Take out the CD and leave the CD compartment open for about an hour to get rid of moisture condensation.

**There is a noise from the speakers.**

- You may here a noise when you operate the remote commander while receiving AM band.

**Sporadic loss of sound in CD operation.**

- Dusty or defective disc — Clean or replace the disc.
- Volume too high — Reduce the volume.
- Strong vibration.

**The remote commander does not function.**

- Make sure that you are pointing the remote commander at the remote sensor on the unit.
- Remove any obstacles in the path of the remote commander and the unit.
- Make sure the remote sensor is not exposed to strong light such as direct sunlight or fluorescent lamp light.
- Move closer to the unit when using the remote commander .

### Specifications

#### AUDIO POWER SPECIFICATIONS

POWER OUTPUT AND TOTAL HARMONIC DISTORTION

With 6-ohm loads, both channels driven from 100–10 000 Hz; rated 1.4 W per channel-minimum RMS power, with no more than 10 % total harmonic distortion in AC operation.

#### CD player section

**System:** Compact disc digital audio system

**Laser diode properties:** Material: GaAlAs

Wavelength: 780 nm  
Emission duration: Continuous  
Laser output: Less than 44.6 μW  
(This output is the value measured at a distance of about 200 mm from the objective lens surface on the optical pick-up block with 7 mm aperture.)

**Frequency response:** 20 – 20 000 Hz  $\pm$ 3 dB

**Wow and flutter:** Below measurable limit

#### Radio section

**Frequency range:**

TV: 2 – 13 ch  
WEATHER: 1 – 7 ch  
FM: 87.5 – 108 MHz  
AM: 530 – 1 710 kHz

#### General

**Time display:** 12-hour system

**Speaker:** 77 mm (3 1/8 inches) dia, 6 Ω

**Power outputs:**

1.8 W + 1.8 W (at 10% harmonic distortion)

**Power requirements:** 120 V AC, 60 Hz

**Dimensions:**

Approx. 400 × 84 × 323 mm (w/h/d)

(Approx. 15 1/2 × 3 3/8 × 12 1/8 inches) incl.

projecting parts and controls

**Mass:** Approx. 3 kg (7 lb)

**Supplied accessories:**

Mounting screws (4), Template (1), Spacers (4), Remote commander (1)

Design and specifications are subject to change without notice.



Lead-free solder is used for soldering. Halogenated flame retardants are not used in printed wiring boards.

## IMPORTANT SAFEGUARDS

For your protection, please read these safety instructions completely before operating the appliance, and keep this manual for future reference. Carefully observe all warnings, precautions and instructions on the appliance and in the operating instructions, and adhere to them.

### INSTALLATION

#### Water and Moisture

Do not use powerline operated appliances near water - for example, near a bathtub, washbowl, kitchen sink, or laundry tub, in a wet basement, or near a swimming pool, etc.

#### Heat

Do not place the appliance near or over a radiator or heat register, or where it is exposed to direct sunlight.

#### Ventilation

The slots and openings in the cabinet are provided for necessary ventilation. To ensure reliable operation of the appliance, and to protect it from overheating, these slots and openings must never be blocked or covered.

-Never cover the slots and openings with a cloth or other materials.

-Never block the slots and openings by placing the appliance on a bed, sofa, rug or other similar surface.

-Never place the appliance in a confined space, such as a bookcase, or built-in cabinet, unless proper ventilation is provided.

#### Accessories

Do not place the appliance on an unstable cart, stand, tripod, bracket, or table. The appliance may fall, causing serious injury to a child or an adult, and serious damage to the appliance. Use only a cart, stand, tripod, bracket, or table recommended by Sony.

-An appliance and cart combination should be moved with care. Quick stops, excessive force, and uneven surfaces may cause the appliance and cart combination to overturn.

#### Wall or Ceiling Mounting

If your appliance can be mounted to a wall or ceiling, mount it only as recommended by Sony.

### USE

#### Power Source

This appliance should be operated only from the type of power source indicated on the marking label. If you are not sure of the type of electrical power supplied to your home, consult your dealer or local power company. For those appliances designed to operate from battery power, or other sources, refer to the operating instructions.

#### Grounding or Polarization

This appliance is equipped with a polarized AC power cord plug (a plug having one blade wider than the other), or with a three-wire grounding type plug (a plug having a third pin for grounding). Follow the instructions below:

**-For the appliance with a polarized AC power cord plug:**

This plug will fit into the power outlet only one way. This is a safety feature. If you are unable to insert the plug fully into the outlet, try reversing the plug. If the plug should still fail to fit, contact your electrician to have a suitable outlet installed. Do not defeat the safety purpose of the polarized plug by forcing it in.

**-For the appliance with a three-wire grounding type AC plug:**

This plug will only fit into a grounding-type power outlet. This is a safety feature. If you are unable to insert the plug into the outlet, contact your electrician to have a suitable outlet installed. Do not defeat the safety purpose of the grounding plug.

#### Overloading

Do not overload wall outlets, extension cords or convenience receptacles beyond their capacity, since this can result in fire or electric shock.

#### When not in use

Unplug the power cord of the appliance from the outlet when left unused for a long period of time.

To disconnect the cord, pull it out by grasping the plug. Never pull the plug out by the cord.

#### Power-Cord Protection

Route the power cord so that it is not likely to be walked on or pinched by items placed upon or against them, paying particular attention to the plugs, receptacles, and the point where the cord exits from the appliance.

#### Lightning

For added protection for this appliance during a lightning storm, or when it is left unattended and unused for long periods of time, unplug it from the wall outlet and disconnect the antenna or cable system. This will prevent damage to the appliance due to lightning and powerline surges.

#### Object and Liquid Entry

Never push objects of any kind into the appliance through openings as they may touch dangerous voltage points or short out parts that could result in a fire or electric shock. Never spill liquid of any kind on the appliance.

#### Cleaning

Unplug the appliance from the wall outlet before cleaning or polishing it. Do not use liquid cleaners or aerosol cleaners. Use a cloth lightly dampened with water for cleaning the exterior of the appliance. Clean the appliance only as recommended by Sony.

#### Attachments

Do not use attachments not recommended by Sony, as they may cause hazards.

### ANTENNAS

#### Outdoor Antenna Grounding

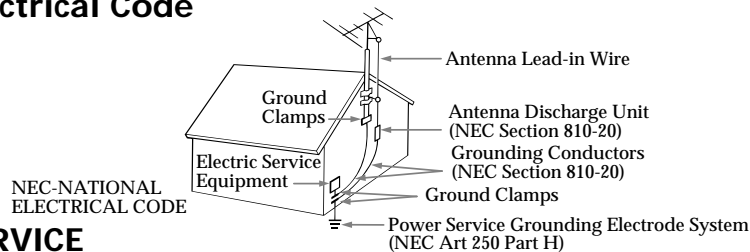
If an outdoor antenna or cable system is installed, follow the precautions below.

An outdoor antenna system should not be located in the vicinity of overhead power lines or other electric light or power circuits, or where it can come in contact with such power lines or circuits.

**WHEN INSTALLING AN OUTDOOR ANTENNA SYSTEM, EXTREME CARE SHOULD BE TAKEN TO KEEP FROM CONTACTING SUCH POWER LINES OR CIRCUITS AS CONTACT WITH THEM IS ALMOST INVARIABLY FATAL.**

Be sure the antenna system is grounded so as to provide some protection against voltage surges and built-up static charges. Section 810 of the National Electrical Code provides information with respect to proper grounding of the mast and supporting structure, grounding of the lead-in wire to an antenna discharge unit, size of grounding conductors, location of antenna-discharge unit, connection to grounding electrodes, and requirements for the grounding electrode.

### Antenna Grounding According to the National Electrical Code



### SERVICE

#### Damage Requiring Service

Unplug the appliance from the wall outlet and refer servicing to qualified service personnel under the following conditions:

-When the power cord or plug is damaged or frayed.

-If liquid has been spilled or objects have fallen into the appliance.

-If the appliance has been exposed to rain or water.

-The appliance does not appear to operate normally or exhibits a marked change in performance.

-This indicates a need for service.

-If the appliance does not operate normally when following the operating instructions, adjust only those controls that are specified in the operating instructions. Improper adjustment of other controls may result in damage and will often require extensive work by a qualified technician to restore the appliance to normal operation.

-If the appliance has been subject to excessive shock by being dropped, or the cabinet has been damaged.

#### Servicing

Do not attempt to service the appliance yourself as opening or removing covers may expose you to dangerous voltage or other hazards.

Refer all servicing to qualified service personnel.

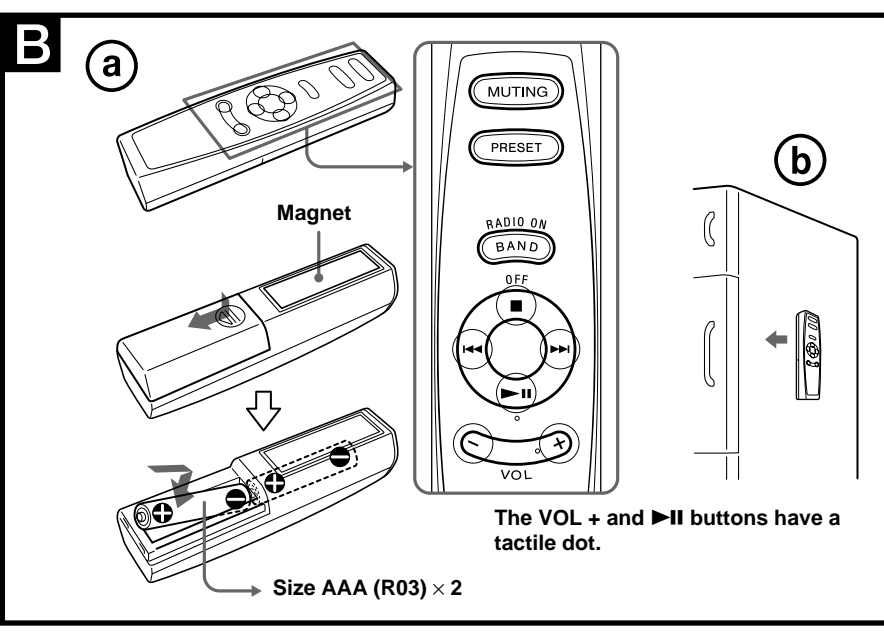
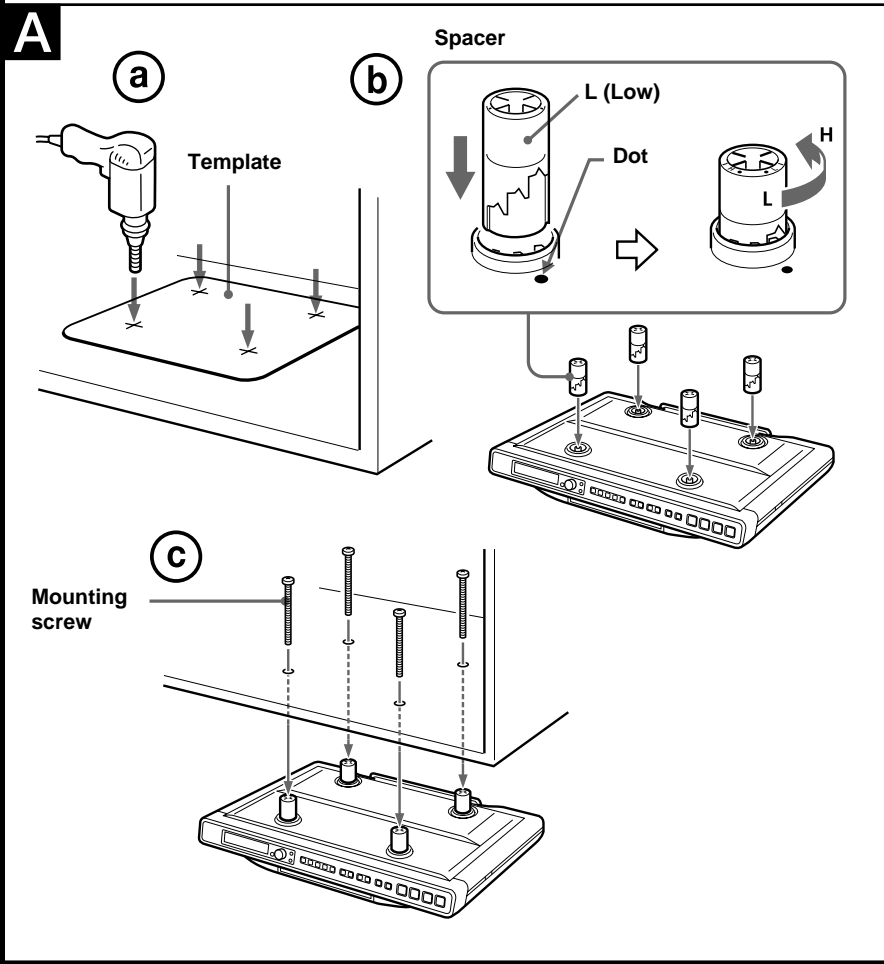
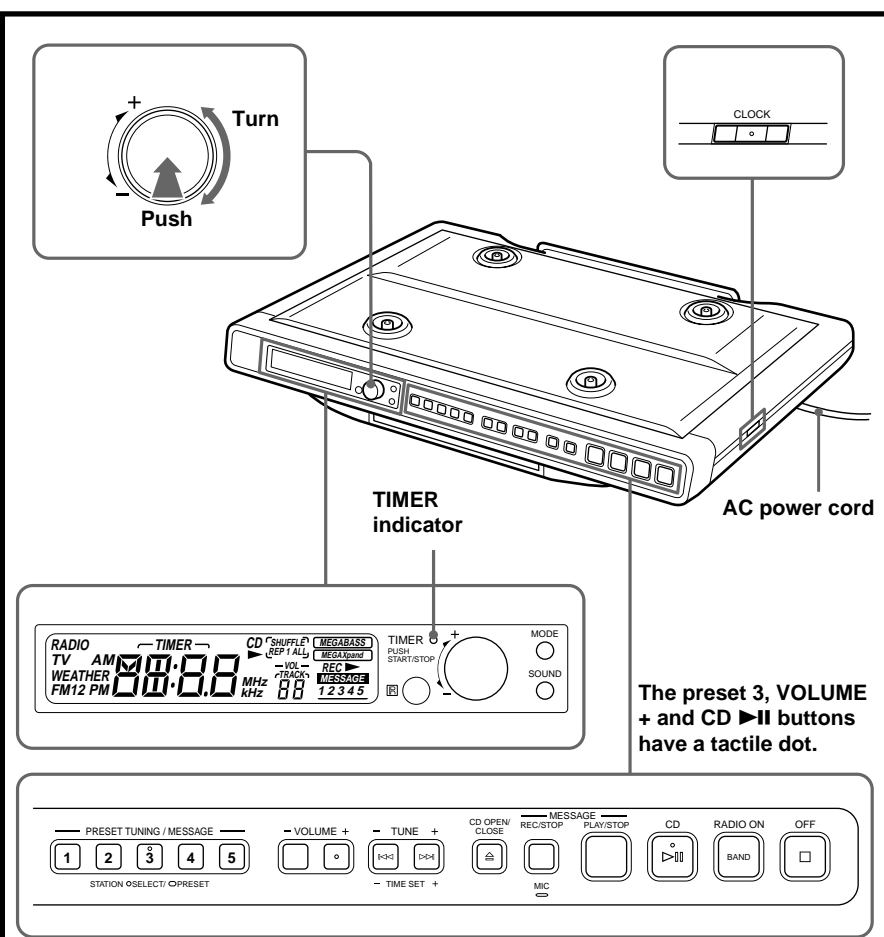
#### Replacement parts

When replacement parts are required, be sure the service technician has used replacement parts specified by Sony that have the same characteristics as the original parts.

Unauthorized substitutions may result in fire, electric shock, or other hazards.

#### Safety Check

Upon completion of any service or repairs to the appliance, ask the service technician to perform routine safety checks (as specified by Sony) to determine that the appliance is in safe operating condition.



## Installing the Unit Under a Cabinet

(See Fig. A)

- The unit can be installed without the spacer.
- 1 Mark the position of the 4 holes by using the supplied template. Use a drill to make the holes (size 6.5 mm dia., 1/4 inch). (See Fig. A-①)
  - 2 If the cabinet door overhangs the shelf and obstructs the unit, you can adjust the unit/shelf height. First set the L mark to the dot which becomes the lowest position, then you can adjust the height in 4 steps (H•L) by turning the spacer counterclockwise. (See Fig. A-②)
  - 3 Install the unit with the supplied mounting screws. (See Fig. A-③)

- Caution**
- Since the unit is very heavy, be careful when installing the unit.
  - Hold the unit horizontally when installing it, since the CD tray may open if the unit is shaken.
  - To reduce the risk of fire, do not place any heating or cooking appliance beneath this unit.
  - Install the unit so that its AC power cord can be connected directly to a wall outlet. Do not use a converter or extension cord.
  - Be sure that the AC power cord has no slack when using the unit, since the cord acts as an FM wire antenna. If the AC power cord has some slack, wind it up to the cord hook until the cord has no slack.
  - The unit has a built-in ferrite bar antenna for AM radio reception. Check the condition of AM reception before fixing in position.
  - Install the unit as far as possible from a source of noise (for example, refrigerator, microwave oven, fluorescent lamp, etc.).

## Setting the Clock

- 1 Plug in the CD kitchen clock radio. The display will flash "AM 12:00".
  - 2 Press **CLOCK** for a few seconds. You will hear a beep and the hour will start to flash in the display.
- 
- 3 Press **TUNE•TIME SET +** or **-** until the correct hour appears in the display.
  - 4 Press **CLOCK** once. The minutes will flash.
- 
- 5 Repeat steps 3 and 4 to set the minutes. After setting the minutes, press **CLOCK** to start the counting of the seconds, and you will hear two short beeps.

To set the current time quickly, hold down **TUNE•TIME SET +** or **-**. 12-hour system: "AM 12:00" = midnight

In step 5, when you press **CLOCK** after the minute setting to activate the clock, the seconds start counting from zero.

## Playing a CD

An 8 cm (3-inch) CD can be played without an adapter.

- 1 Press **CD OPEN/CLOSE** and place a CD on the disc tray.
- 
- 2 Press **CD OPEN/CLOSE** to close the disc tray.
  - 3 Press **CD ▶II**. "CD" and "TRACK 01" appear on the display to indicate that track 1 of the CD is playing.
  - 4 Adjust volume using **VOLUME +** or **-**.

To	Press
Pause	CD ▶II
Resume play after pause	CD ▶II again
Locate the beginning of the current track (AMS*)	◀◀ **
Locate the next track (AMS)	▶▶**
Go back at high speed	Hold down ◀◀**
Go forward at high speed	Hold down ▶▶**
Locate the previous track (AMS)	◀◀ repeatedly**
Locate the succeeding track (AMS)	▶▶ repeatedly**
Stop play	■ OFF

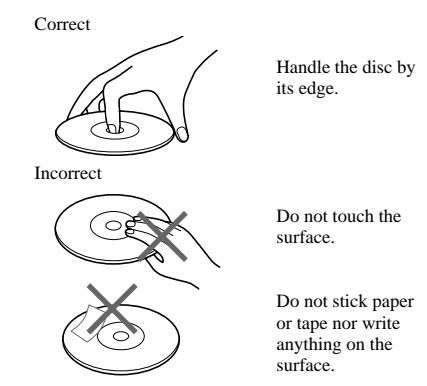
\* AMS = Automatic Music Sensor  
\*\* These operations are possible during both play and pause.

**About CD-Rs/CD-RWs**  
This unit is compatible with CD-Rs/CD-RWs but playback capability may vary depending on the quality of the disc, the recording device and application software.

## Music discs encoded with copyright protection technologies

This product is designed to play back discs that conform to the Compact Disc (CD) standard. Recently, various music discs encoded with copyright protection technologies are marketed by some record companies. Please be aware that among those discs, there are some that do not conform to the CD standard and may not be playable by this product.

## To handle compact discs



- Notes**
- Discs with non-standard shapes (e.g., heart, square, star) cannot be played on this unit. Attempting to do so may damage the unit. Do not use such discs.
  - If you press **CD ▶II** when there is no disc in the CD compartment, "00" flashes for about 5 seconds on the display and the unit turns off automatically.
  - After 20 minutes, playback will be stop when you press **CD ▶II** during playback.

## Various Modes of CD Playback

You can play tracks repeatedly or in random order.

Press **MODE**. Each press changes the play mode as follows:

Display indication	Play mode
none	(normal play)
All the tracks are played once.	↓
"REP 1"	(single repeat)
A single track is played repeatedly.	↓
"REP ALL"	(all repeat)
All the tracks are played repeatedly.	↓
"SHUFFLE"	(shuffle play)
All the tracks are played once in random order.	↓
"SHUFFLE REP"	(shuffle repeat)
All the tracks are played repeatedly in random order.	

## Playing the Radio —Manual Tuning

- 1 Press **RADIO ON/BAND** to turn on the radio. "RADIO" appears in the display. The display shows the band and frequency for a few seconds and then changes back to the current time.
- 2 Press **RADIO ON/BAND** repeatedly to select the desired band. Each press changes the band as follows:  

When using FM1 or FM2 preset mode, you may listen to the radio on either mode (See "Presetting Your Favourite Station").
- 3 Use **TUNE•TIME SET +** or **-** to tune in to the desired station. Two short beeps sound when the minimum frequency of each band is received during tuning.
- 4 Adjust volume using **VOLUME +** or **-**.

**To check the station being received**  
Press **RADIO ON/BAND** lightly. The display shows the band and frequency for a few seconds and then changes back to the current time.

To turn off the radio, press **■ OFF**.

## Improving the Reception

- TV, WEATHER, FM:**  
Extend the AC power cord fully to improve FM reception.
- AM:** When installing the unit, rotate the unit horizontally for optimum reception and then install the unit. A ferrite bar antenna is built into the unit.

## Presetting Your Favourite Station —Preset Tuning

You can preset 10 stations in FM (5 stations in FM1, 5 stations in FM2) and 5 stations in each AM, TV, WEATHER.

## Presetting a Station

- 1 Follow steps 1 to 4 in "Playing the Radio" and manually tune in to the station you wish to preset.
  - 2 Hold down the **PRESET TUNING/MESSAGE** button you wish to preset for more than 2 seconds.
- Example:** Display window when you preset FM 90 MHz in the **PRESET TUNING/MESSAGE** button **2** for FM2.
- 

The display shows the frequency for a few seconds and then changes back to the current time.

To preset another station, repeat these steps. To change the preset station, tune in to the desired station and hold down the **PRESET TUNING 1** to **5** button. The new station will replace the previous station on the **PRESET TUNING** button.

## Tuning in to a Preset Station

- 1 Press **RADIO ON/BAND** to turn on the radio.
- 2 Press **RADIO ON/BAND** to select the band.
- 3 Press the desired **PRESET TUNING/MESSAGE** button.
- 4 Adjust the volume using **VOLUME +** or **-**. After a few seconds, the display returns to the current time but the **PRESET TUNING** button number remains.

**Note**  
Holding down the desired **PRESET TUNING/MESSAGE** button for more than a few seconds in step 3 will replace the previous station on the **PRESET TUNING/MESSAGE** button with the station you tuned into.

## Switching between monaural and stereo

The radio is set for stereo reception at the default setting. If FM stereo reception is poor, set to "FM MONO (monaural)". Noise will be reduced although the sound will not be heard in stereo.

- 1 Press **RADIO ON/BAND** to turn on the radio.
- 2 Press **RADIO ON/BAND** repeatedly to select FM 1 or FM 2.
- 3 Press **MODE**. "Mono(monaural)" or "ST(Stereo)" appears in the display. Each time you press **MODE**, the mode changes to either "Mono" or "ST".
- 4 Select Mono or ST. The mode you select appears in the display for a few seconds and returns to the current time.

## Other Useful Functions

- 1 Press **SOUND** repeatedly to select the desired sound mode. Each press changes the sound mode as follows:
- To obtain vast sound**  
The "MEGA Xpand" system produces an extensive sound.
- To obtain powerful bass sound**  
The "MEGA BASS" system produces a powerful bass sound.
- Note**  
"MEGA Xpand" is not effective in monaural.

## Using the Digital Voice Memo —Recording the Message

- 1 Press **REC/STOP**. "REC" and "VOICE MEMO numbers" flash, "MESSAGE" light up in the display to indicate recording is active.
- 2 Press the **PRESET TUNING/MESSAGE** button you wish to record. In this case, only the number you pushed flashes in the display. You will hear a beep, and you can record your message.
- 3 Speak into the **MIC** while "0000" appears in the display (one 0 will disappear every 3 seconds).
- 4 Press **REC/STOP** again to stop recording. Or recording automatically stops after 12 seconds. (A beep will sound, the preset number and ▶ will flash). You can confirm voice memo recording by pressing **PLAY/STOP** within 5 seconds.

## —Playing the Message

- 1 Press **PLAY/STOP**.
  - 2 Press the **PRESET TUNING/MESSAGE** button, you want to listen to. You will hear a beep.
- The volume can be adjusted by pressing **VOL +** or **-** during message playback. Press **PLAY/STOP**, you can stop playing the message.

- Notes**
- Only one message can be recorded and up to about 12 seconds.
  - After a message has been played, the preset number becomes permanently lit.
  - When a power failure is over one minute, the recording voice memo is deleted.

## Operating the Cooking Timer (Countdown Timer)

The timer can be set at one minute intervals between 1–120.

- 1 Turn **TIMER** until the desired time appears in the display. "TIMER" will appear in the display when **TIMER** is turned. After setting the time, the current time is displayed again if you do not perform any operation for more than 65 seconds.
- 2 Push **TIMER** once. Timer indicator lights and beep sounds. While the timer is set, the display shows the remaining time.

To display the current time, press **CLOCK**.

## Cooking Timer ON—

When the time has elapsed, the buzzer will sound and the **TIMER** indicator flashes. Even if the CD or the radio is being played, the buzzer of the timer sounds together. While the buzzer sounds, the volume of the CD or the radio is decreased. The volume returns to the previous volume level when the buzzer stops.

## Cooking Timer OFF—

The buzzer is turned off automatically after 60 minutes and the display shows current time.

## To Stop Cooking Timer

Press **TIMER** to turn off the buzzer.

## To Deactive Cooking Timer

Press **TIMER**. The **TIMER** indicator goes off and the current time appears in the display.

**Note**  
If a power failure occurs while the Cooking timer is operating, The remaining time becomes invalid.

## Installing the Batteries into the Remote Commander (See Fig. B-②)

Insert two size AAA (R03) batteries (not supplied).

## When to replace the batteries

With normal use, the batteries should last for about six months. When the remote commander no longer operates the CD kitchen clock radio, replace all the batteries with new ones.

- Notes**
- Do not charge the dry batteries.
  - When you are not going to use the remote commander for a long time, remove the batteries to avoid any damage caused by leakage and corrosion.

## Using the Remote Commander

You can play the CD or radio using the remote commander.

The effective range of the frequency emitted from the remote commander is approximately 5 m (16 ft.). Make sure to use the remote commander within this range. Use the remote commander in the right direction to the receiver of the unit.

To	Press
Attenuate the volume	<b>MUTING</b> While muting, "0" flashes on the display. To return to the previous volume level, press <b>MUTING</b> again.
Select the preset number	<b>PRESET</b> Each press of <b>PRESET</b> , you can select the preset number (1–5).

The command buttons on the remote commander are the same as the command buttons on the main unit as described below:

The **RADIO ON/BAND** on the remote commander is the same as the **RADIO ON/BAND** on the main unit.

The **▶II** on the remote commander is the same as the **CD ▶II** on the main unit.

The **■ OFF** on the remote commander is the same as the **■ OFF** on the main unit.

The **◀◀** and **▶▶** on the remote commander are the same as the **◀◀** and **▶▶** on the main unit. However, you cannot use **◀◀** and **▶▶** as the **TUNE•TIME SET +** and **-**, when tuning the radio or setting the time.

The **VOL +** and **-** on the remote commander are the same as the **VOLUME +** and **-** on the main unit.

## Use of Magnet (See Fig. B-②)

The magnet is attached on the back of the remote commander. You can put the remote commander on a iron board such as on a refrigerator. However, do not operate the remote commander while putting on the board.

**Note**  
Do not place the remote commander near the magnetic cards.

## Free Manuals Download Website

<http://myh66.com>

<http://usermanuals.us>

<http://www.somanuals.com>

<http://www.4manuals.cc>

<http://www.manual-lib.com>

<http://www.404manual.com>

<http://www.luxmanual.com>

<http://aubethermostatmanual.com>

Golf course search by state

<http://golfingnear.com>

Email search by domain

<http://emailbydomain.com>

Auto manuals search

<http://auto.somanuals.com>

TV manuals search

<http://tv.somanuals.com>