

# CPD-E500

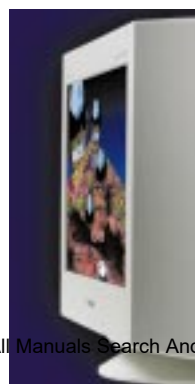
**SONY**

Large-screen FD Trinitron® CRT delivers superior image performance and reliability—affordability without compromise for users that require extra screen space



## Multiscan E500 Computer Display

- **21" (19.8" VIS) FD Trinitron CRT** – Virtually-flat, high-resolution screen delivers outstanding image quality with reduced glare
- **0.24mm Aperture Grille pitch** – Sets new standard in image clarity and precision
- **Digital Multiscan technology** – Supports resolutions up to 2048 x 1536 @ 60Hz
- **High-contrast black screen coating** – Produces superior contrast and grayscale performance
- **HiDensity™ Electron Gun with Enhanced Elliptical Correction System™** – For consistent, accurate focus across the screen, even in the corners
- **Display Mouse™ OSD menu control** – Simplifies monitor set-up, troubleshooting and adjustment



**FD Trinitron**  
The definition of definition.

<p><b>Model</b> CPD-E500</p> <p><b>CRT</b> 21" FD Trinitron® with HiDensity™ Electron Gun</p> <p><b>Viewable Image Size</b> 19.8"</p> <p><b>Aperture Grille Pitch</b> 0.24mm</p> <p><b>Screen Treatment</b> High Contrast AR Coating</p> <p><b>Horizontal Scan Range</b> 30-109kHz</p> <p><b>Vertical Scan Range</b> 48-160Hz</p> <p><b>Maximum Resolution</b> 2048 x 1536 @ 65Hz</p> <p><b>Recommended Resolution</b> 1600 x 1200 @ 85Hz</p> <p><b>Factory Preset Resolutions</b> Timing Data Table (TDT) - 28 modes User-Adjustable - 15 settings</p> <p><b>Color Temperature Presets</b> 5000 Kelvin 6500 Kelvin 9300 Kelvin User-adjustable sRGB RGB Gain/Bias</p> <p><b>Signal Inputs</b> Analog RGB 0.7Vp-p, 75ohm Typical</p> <p><b>External Sync Signals</b> Separate/Composite 1-5Vp-p, polarity-free TTL Sync on green 0.3V p-p±10%, negative</p> <p><b>Input Connector</b> Captive 15 pin mini D-sub</p> <p><b>Power Requirements</b> 90-264V AC; 50-60Hz</p> <p><b>Power Management</b> International Energy Star, NUTEK, and VESA DPMS Compliant Operation: &lt;145 watts Suspend: &lt;15 watts Active Off: &lt;1 watt Power Off: 0 watt</p> <p><b>Dimensions (WxHxD)</b> 19.6" x 18.9" x 18.8"</p> <p><b>Weight</b> 70.5 lbs</p> <p><b>Operating Temperature</b> 50°F-104°F (10°C-40°C)</p> <p><b>Operating Humidity</b> 10%-80% (Non-Condensing)</p>	<p><b>Regulation and Standard Compliance</b></p> <p><b>Safety:</b> UL 1950 CSA 22.2 No. 950 EN60950 (TUV, GS mark)</p> <p><b>Emission/EMI:</b> FCC Class B IC Class B EN55022</p> <p><b>ELF/VLF:</b> MPR II TUV (full compliance)</p> <p><b>X-ray:</b> DHHS DNHW</p> <p><b>Ergonomics:</b> ISO9241-3, -7, -8</p> <p><b>Designed for:</b> PC99, Windows® 95, 98, 2000, Windows NT® Macintosh® Compatible</p> <p><b>Plug &amp; Play:</b> DDC-1, DDC-2B, DDC-2Bi DMI Compliant</p> <p><b>VESA:</b> Generalized Timing Formula (GTF)</p> <p><b>Front Panel Digital Controls</b></p> <p>Power On/Off Reset Slider Input Selector DisplayMouse™ Control On-Screen Display (OSD)</p> <p>Brightness Contrast H/V Size and Centering Zoom Raster Rotation Pincushion Pin Balance sRGB Keystone Key Balance Color Temperature H/V Convergence Top/Bottom V Convergence 4 Corners Landing Moiré Adjust Moiré Cancel (On/Off) Manual Degauss H/V OSD Position Control Lock Multi-Language Select (9 languages)</p> <p><b>Supplied Accessories</b></p> <p>AC Power Cord INF Diskette Mac Adapter User's Manual</p> <p><b>Limited Warranty</b> 3 Years - Parts, Labor and CRT</p>
---	---

The Multiscan E500 is ideal for the home or the office requiring exceptional image performance, without sacrificing value or reliability. It's perfect for everything from spreadsheets to finely detailed graphic presentations to browsing the Internet and gaming.

The virtually flat, high-resolution FD Trinitron® CRT combined with a 0.24 mm aperture grille pitch and precise, convenient on-screen digital controls, allow the CPD-E500 to perform at a level that will set a new benchmark for your expectations of clarity and color.

To provide superior contrast and grayscale performance, the CPD-E500 screen features a high-contrast black coating. This coating, coupled with the display's vertically flat screen, also helps cut glare and washout caused by ambient light. And that reduces eyestrain.

Sony's DisplayMouse™ menu control makes this premier SOHO display one of the easiest to set up, adjust and—in the unlikely event that there's a problem—troubleshoot. Users can quickly take advantage of everything the CPD-E500 has to offer.

## SONY

Sony Electronics Inc.  
3300 Zanker Road, San Jose, California 95134  
For more information: 1.800.352.SONY  
Web address: <http://www.sony.com/displays>

Computer Interface: The computer industry lacks standards, and therefore, there are a multitude of varying software packages and add-on hardware options. This display is not manufactured to any specific software, and Sony does not and cannot make any warranty or representation with respect to the performance of this product with any particular software packages and/or non-Sony add-on hardware option except those mentioned in this document. Sony hereby disclaims any representations or warranty that this product is compatible with any combination of non-Sony products you may choose to connect. While Sony representatives or Sony authorized dealers may be able to assist you and may make recommendations, they are NOT authorized to vary or waive this disclaimer. Purchasers must determine for themselves the suitability and compatibility of the hardware and software in each and every particular instance.

©2000 Sony Electronics Inc. All rights reserved. Reproduction in whole or in part without written permission is prohibited. Sony, the Sony logo, Multiscan, Trinitron, DisplayMouse, HiDensity, Enhanced Elliptical Correction System and The Definition of Definition are trademarks of Sony. Microsoft, the Windows Logo, Windows and Windows NT are registered trademarks of Microsoft Corporation. Mac and Macintosh are trademarks of Apple Inc. Features and specifications are subject to change without notice. Non-metric weights and measurements are approximate.

This monitor is Energy Star Compliant when used with a computer equipped with VESA Display Power Management Signaling (DPMS). As an International Energy Star Partner, Sony Corporation has determined that this product meets the International Energy Star Program for energy efficiency. The Energy Star emblem does not represent EPA endorsement of any product or service. Screen images are simulated.

D193  
Printed in U.S. Download from [www.Somanuals.com](http://www.Somanuals.com). All Manuals Search And Download.



## Free Manuals Download Website

<http://myh66.com>

<http://usermanuals.us>

<http://www.somanuals.com>

<http://www.4manuals.cc>

<http://www.manual-lib.com>

<http://www.404manual.com>

<http://www.luxmanual.com>

<http://aubethermostatmanual.com>

Golf course search by state

<http://golfingnear.com>

Email search by domain

<http://emailbydomain.com>

Auto manuals search

<http://auto.somanuals.com>

TV manuals search

<http://tv.somanuals.com>