



DELUXE PRO™ SERIES

SONY

Flat Panel LCD Computer Display

X52, X52/B X72, X72/B
X82, X82/B X202/B



Slim, Stylish Design - Distinctive styling combined with integrated power supply and cable management system maximizes desktop space adding efficiency and style to the home or office.

Digital & Analog Input - Digital connection maximizes video performance, dual inputs provide multiple computer support.

Stereo Speakers w/ HPJ - Integrated speakers deliver superb audio for multimedia, music and Internet content.

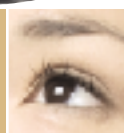
Multiple View Pivot Stand - Adjust to various positions to provide optimal viewing angle and maximum comfort.

Automatic Image Adjustments - Instant adjustment of images at multiple resolutions optimize video performance.

Eco Energy Mode - Lower power consumption provides increased savings throughout the life of the product.



Taking image quality to the next level--power-packed with the innovative features, style, and reliability you expect from Sony.



DELUXE PRO™ SERIES

VISUAL INNOVATION - CLEARLY SONY



Model Number	X52, X52/B	X72, X72/B	X82, X82/B	X202/B
Viewable Image Size	15.0"	17.0"	18.1"	20.1"
Native Resolution	1024 x 768	1280 x 1024	1280 x 1024	1600 x 1200
Screen Coating	Anti-Glare/Hard Coating	Anti-Glare/Hard Coating	Anti-Glare/Hard Coating	Anti-Glare/Hard Coating
Pixel Pitch	0.297 mm	0.264 mm	0.208 mm	0.255 mm
Cabinet Color	Two-Tone Grey or Black & Silver (grey model: X52)	Two-Tone Grey or Black & Silver (grey model: X72)	Two-Tone Grey or Black & Silver (grey model: X82)	Black & Silver
Audio, Head Phone Jack (HPJ)	Stereo Speakers, HPJ	Stereo Speakers, HPJ	Stereo Speakers, HPJ	Stereo Speakers, HPJ
Horizontal Scan (kHz)	28-61kHz	28-92kHz	28-92kHz	28-92kHz
Vertical Refresh (Hz)	56-75Hz	56-85Hz	56-85Hz	48-85Hz
Response Time (Rise/Fall)	30ms	30ms	50ms	30ms
Contrast Ratio (max.)	400:1	400:1	400:1	350:1
Luminance	300cd/m ²	280cd/m ²	300cd/m ²	250cd/m ²
Viewing Angle (H/V)	150°/115°	160°/160°	170°/170°	170°/170°
Tilt Adjust	0° to +80°	0° to +80°	0° to +80°	0° to +20°
Swivel Range	N/A	N/A	± 45°	± 45°
Height Adjust:	0" to +2"	0" to +2"	0" to +2"	N/A
Video Input Connector(s)	Digital (DVI-D) and Analog (HD15)	Digital (DVI-D) and Dual Analog (HD15)	Digital (DVI-D) and Dual Analog (HD15)	Digital (DVI-D) and Dual Analog (HD15)
USB Hub	N/A	N/A	N/A	1 Upstream Port 3 Downstream Port
Power Management	Max. Power 28W (max.) Eco Mode 23W (max.) Sleep Mode 3W (max.) Main Off 0W	Max. Power 40W (max.) Eco Mode 32W (max.) Sleep Mode 3W (max.) Main Off 0W	Max. Power 58W (max.) Eco Mode 48W (max.) Sleep Mode 3W (max.) Main Off 0W	Max. Power 78W (max.) Eco Mode 69W (max.) Sleep Mode 3W (max.) Main Off 0W
Internal Power Supply	Yes	Yes	Yes	Yes
Dimensions (WxHxD)	15.4" x 14.1" x 7.8" (w/ stand base) 15.4" x 11.8" x 2.9" (w/o stand base)	17.2" x 16.1" x 8.9" (w/ stand) 17.2" x 14.0" x 3.3" (w/o stand)	17.7" x 16.7" x 9.5" (w/ stand base) 17.7" x 14.5" x 3.5" (w/o stand base)	20.5" x 18.6" x 10.1" (w/ stand base) 20.5" x 16.1" x 3.9" (w/o stand base)
Weight (Display)	10.6 lbs. (w/ stand base) 7.7 lbs. (w/o stand base)	15.7 lbs. (w/ stand base) 11.7 lbs. (w/o stand base)	19.0 lbs (w/ stand base) 14.3 lbs. (w/o stand base)	26.5 lbs (w/ stand base) 21.4 lbs. (w/o stand base)
On Screen Controls	Power, Menu, Contrast, Brightness, Volume, Input Select, Eco Mode, Color Temperature, Backlight, Auto Adjust, H/V Adjust, Power Save, Audio Select, Phase, Pitch, Reset, Gamma, Zoom, Smoothing, Menu Lock, OSD Position Multi Lang. (Eng., Fre., Spa., Ital., Ger., Jap.)	Power, Menu, Contrast, Brightness, Volume, Input Select, Eco Mode, Color Temperature, Backlight, Auto Adjust, H/V Adjust, Power Save, Audio Select, Phase, Pitch, Reset, Gamma, Zoom, Smoothing, Menu Lock, OSD Position Multi Lang. (Eng., Fre., Spa., Ital., Ger., Jap.)	Power, Menu, Contrast, Brightness, Volume, Input Select, Eco Mode, Color Temperature, Backlight, Auto Adjust, H/V Adjust, Power Save, Audio Select, Phase, Pitch, Reset, Gamma, Zoom, Smoothing, Menu Lock, OSD Position Multi Lang. (Eng., Fre., Spa., Ital., Ger., Jap.)	Power, Menu, Contrast, Brightness, Volume, Input Select, Eco Mode, Color Temperature, Backlight, Auto Adjust, H/V Adjust, Power Save, Audio Select, Phase, Pitch, Reset, Gamma, Zoom, Smoothing, Menu Lock, OSD Position Multi Lang. (Eng., Fre., Spa., Ital., Ger., Jap.)
Regulation Compliance	Safety: UL1950, CSA 22.2, NOM, EMI CE, FCC Class B, IC Class B: Power Management Energy Star Emissions/Ergonomics: TCO'99 (X52), TCO '95 (X52/B) Designed For: PC2001, Windows® 95, 98, 2000 Windows NT®, Windows XP®, Macintosh® Plug and Play: DDC 2B	Safety: UL1950, CSA 22.2, NOM, EMI CE, FCC Class B, IC Class B: Power Management Energy Star Emissions/Ergonomics: TCO'99 (X72), TCO '95 (X72/B) Designed For: PC2001, Windows® 95, 98, 2000 Windows NT®, Windows XP®, Macintosh® Plug and Play: DDC 2B	Safety: UL1950, CSA 22.2, NOM, EMI CE, FCC Class B, IC Class B: Power Management Energy Star Emissions/Ergonomics: TCO'99 (X82), TCO '95 (X82/B) Designed For: PC2001, Windows® 95, 98, 2000 Windows NT®, Windows XP®, Macintosh® Plug and Play: DDC 2B	Safety: UL1950, CSA 22.2, NOM, EMI CE, FCC Class B, IC Class B: Power Management Energy Star Emissions/Ergonomics: TCO '95 (X202/B) Designed For: PC2001, Windows® 95, 98, 2000 Windows NT®, Windows XP®, Macintosh® Plug and Play: DDC 2B
Supplied Accessories	AC Power Cord, Owners Manual Windows® Utility Files Macintosh® Utility Files DVI-D Video Signal Cable HD15 Video Signal Cable Audio Cable, Warranty Card	AC Power Cord, Owners Manual Windows® Utility Files Macintosh® Utility Files DVI-D Video Signal Cable HD15 Video Signal Cable Audio Cable, Warranty Card	AC Power Cord, Owners Manual Windows® Utility Files Macintosh® Utility Files DVI-D Video Signal Cable HD15 Video Signal Cable Audio Cable, Warranty Card	AC Power Cord, Owners Manual Windows® Utility Files Macintosh® Utility Files DVI-D Video Signal Cable HD15 Video Signal Cable USB Cable, Audio Cable, Warranty Card
Limited Warranty	3 years (Parts, Labor, Backlight)	3 years (Parts, Labor, Backlight)	3 years (Parts, Labor, Backlight)	3 years (Parts, Labor, Backlight)

Slim, Stylish Design



Maximize desktop space

Eco Energy Mode



Reduce Energy Cost

Digital Video Input



Optimize Video Performance



SONY

Sony Electronics Inc.
16450 West Bernardo Drive
San Diego, California 92127
For more information: 1.800.352.SONY
Web address: sony.com/displays

Computer Interface: The computer industry lacks standards, and therefore, there are a multitude of varying software packages and add-on hardware options. These displays are not manufactured to any specific software, and Sony does not and cannot make any warranty or representation with respect to the performance of this product with any particular software packages and/or non-Sony add-on hardware option except those mentioned here. Sony hereby disclaims any representations or warranty that this product is compatible with any combination of non-Sony products you may choose to connect. While Sony representatives or Sony authorized dealers may be able to assist you and may make recommendations, they are NOT authorized to vary or waive this disclaimer. Purchasers must determine for themselves the suitability and compatibility of the hardware and software in each and every particular instance. © 2002 Sony Electronics Inc. All rights reserved. Reproduction in whole or in part without written permission is prohibited. Sony, the Sony logo are trademarks of Sony. Microsoft, the Windows Logo, and Windows are registered trademarks of Microsoft Corporation. Mac and Macintosh are trademarks of Apple Inc. All other trademarks are property of their respective owners. Features and specifications are subject to change without notice. These monitors are Energy Star Compliant when used with a computer equipped with VESA Display Power Management Signaling (DPMS). As an International Energy Star Partner, Sony Corporation has determined that this product merits the International Energy Star Program for energy efficiency. The Energy Star emblem does not represent EPA endorsement of any product or service. Screen images are simulated.

Free Manuals Download Website

<http://myh66.com>

<http://usermanuals.us>

<http://www.somanuals.com>

<http://www.4manuals.cc>

<http://www.manual-lib.com>

<http://www.404manual.com>

<http://www.luxmanual.com>

<http://aubethermostatmanual.com>

Golf course search by state

<http://golfingnear.com>

Email search by domain

<http://emailbydomain.com>

Auto manuals search

<http://auto.somanuals.com>

TV manuals search

<http://tv.somanuals.com>