



SONY

α900

α

A celestial new standard in imaging

Introducing the Sony® α (alpha) DSLR-A900. A camera whose stellar image quality eclipses everything you have known before. At its heart is a 35mm full-frame Exmor™ CMOS sensor that represents the culmination of a dream. With 24.6-megapixel¹ resolution that captures details so fine, and color so rich and natural, you will never be satisfied with anything less again. The α900 digital SLR from Sony.









At the summit of design perfection

The α (alpha) DSLR A900 camera. Take it in your hands, and you will know that this is the camera you have been waiting for. Look into its viewfinder, and you will see the world with a clarity that opens your mind to possibilities as limitless as the sky. You are free to express your creativity as never before.

From the prominent forepeak of its pentaprism, to the sleek beauty of its magnesium-alloy body, the α 900 is finished to a standard of perfection that only Sony could have achieved. The 24.6-megapixel 35mm full-frame Exmor™ CMOS sensor that beats at the heart of the α 900 will reward you with a standard of quality that photographers have desired for generations. Now the wait is over.

A breakthrough in digital imaging realism for ultra-fine detail and truly natural color

Images of singular beauty, from a sensor like no other

Only a company like Sony, with extended experience in semiconductor and microprocessor manufacturing, could have developed the α 900's remarkable new 24.6-megapixel¹ 35mm full-frame Exmor™ CMOS sensor. Designed specifically to take advantage of the superb power of the high-precision α series lenses, its high pixel count and large size assure enhanced image detail and a wider dynamic range that enables colors and subtle tonal gradations to be captured just as the human eye perceives them.

24.6

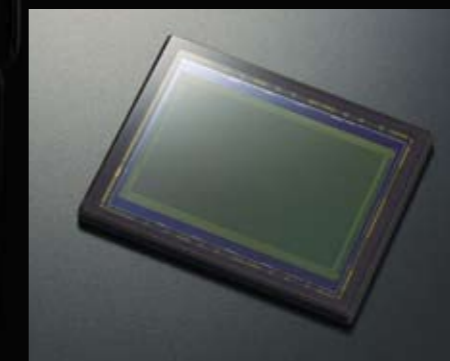
 megapixels


24.6-megapixel Exmor™ CMOS 35mm full-frame imaging

The α DSLR A900 camera image sensor is designed from the ground up for 35mm full-frame imaging, and is produced using proprietary Sony® planarization technologies to ensure an ultra-flat surface across the entire imaging area. Instead of a single analog/digital converter, the sensor uses over 6000 on-chip column-parallel analog/digital converters to convert analog signals to noise-resistant digital signals at the earliest possible stage. In addition, noise reduction is applied both before and after analog/digital conversion to ensure cleaner signal output. The result is not only higher image quality, but also blazingly fast sensor response.

Dual BIONZ™ image processing for truly lifelike and natural color

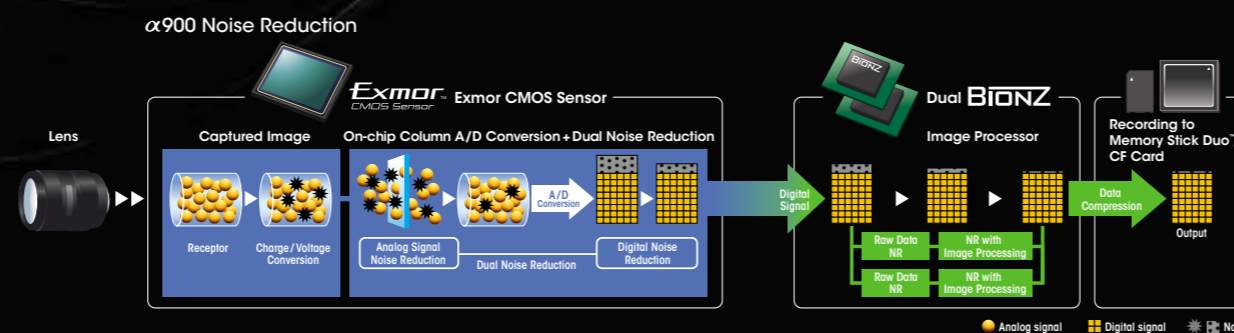
Image processing on the α 900 gets a big boost in speed and power from new Dual BIONZ image processing engines. As a result, the α 900's massive amount of image data captured by the 24.6-megapixel Exmor CMOS sensor can be processed instantly, assuring you of quick shooting response and truly natural, what-you-see-is-what-you-get color and tonal gradation. In addition, the Dual BIONZ engines apply user selectable noise reduction algorithms twice — once prior to RAW data conversion and again during image processing — to ensure an absolute minimum of noise in final image data.



Faster, more powerful SteadyShot™ INSIDE image stabilization

To match the larger size and higher image quality specifications of the new 35mm full-frame Exmor CMOS sensor, the α 900 features a SteadyShot INSIDE image stabilization system that is 1.5x more powerful and 1.3x faster than our previous systems. Enabling you to enjoy handheld shooting at shutter speeds up to

four steps slower than would otherwise be possible.² The body-mounted SteadyShot INSIDE system works with all compatible α system lenses — including macro and wide-angle lenses — and doesn't cause the image degradation that can occur with lens-based optical stabilization systems.



SteadyShot INSIDE unit for 35mm full-frame format sensor

SteadyShot INSIDE unit for APS-C format sensor

Optical excellence to satisfy the most demanding photographer

A lens for every need, to capture beauty in every shot

With the α 900 and its 24.6-megapixel 35mm full-frame CMOS sensor, you've got a camera system that can fully realize the performance potential of the world-class α lens lineup.

Drawing on the tradition of craftsmanship that gave birth to such optical innovations as ED (Extra-low Dispersion) and super ED glass, the α lens lineup also integrates the latest lens technologies developed for Sony professional broadcast-use

video cameras. It includes top-quality G series and Carl Zeiss® lenses crafted to the highest standards of optical precision, as well as a wide-ranging selection of fisheye, macro, STF (Smooth Trans Focus), and other high-performance lenses. Offering a lens for virtually every need, the α system lens lineup will continue to grow and evolve, presenting you with an ever-expanding universe of photographic creativity to explore.

G series lenses: the gold standard in performance

α system G series lenses are designed and constructed to the highest standards of optical excellence, and incorporate proprietary Sony technologies to maximize imaging performance. Precision-built to shrug off the elements and provide a lifetime of photographic pleasure, G lenses feature circular aperture mechanisms for smooth, attractive background defocusing, and make lavish use of high-quality aspherical and ED optical glass elements to assure superb clarity and sharpness.

Carl Zeiss lenses: world-class craftsmanship in every detail

Developed jointly by Sony and the world-famous lens-maker Carl Zeiss, these lenses are considered by many to be some of the finest lenses in the world. Top-quality optics with ED and super ED glass elements ensure unrivalled clarity, high contrast and resolving power, and superb defocusing characteristics, with true-to-life color and exceptionally rich tonal gradations and textural detail. In addition, lens elements feature proprietary T* coatings to reduce flaring and ghosting to an absolute minimum.



70-200mm F2.8 G (SAL70200G)

A bright, high-performance telephoto zoom lens with the light-gathering power of an F2.8 aperture, and an SSM autofocus drive system.



New 70-400mm F4-5.6 G SSM (SAL70400G)

A powerful new G series super telephoto zoom lens with a quiet and responsive SSM (Super Sonic wave Motor) autofocus drive system.³



New Vario-Sonnar® T* 16-35mm F2.8 ZA SSM (SAL1635Z)

A bright super-wide to wide-angle zoom lens with super ED glass, high-precision Carl Zeiss lens, and an SSM autofocus drive system.³



Vario-Sonnar T* 24-70mm F2.8 ZA SSM (SAL2470Z)

An exceptionally versatile wide-angle to mid-range zoom lens with high-quality Carl Zeiss lens and an SSM autofocus drive system.



300mm F2.8 G (SAL300F28G; above) and Sonnar T* 135mm F1.8 ZA (SAL135F18Z; below)

Frame and capture your subject with uncompromising speed and precision

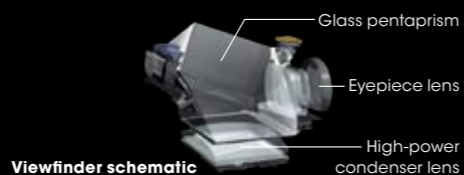


Unparalleled viewfinder brightness and a 100% field of view (approx.)

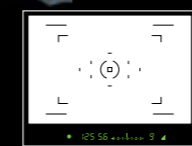
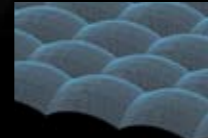
The $\alpha 900$'s viewfinder is a masterpiece of optical precision in its own right. Featuring a high-quality optical glass pentaprism and a new high-power condenser lens, it offers truly exceptional brightness, 0.74X magnification (approx.) and a field of view that covers virtually 100% of the 35mm full-frame sensor's large imaging area. A high refractive index glass eyepiece and condenser lenses virtually eliminate distortion, while multi-layer anti-reflective coatings help prevent ghosting. A spherical acute matte focusing screen aids manual focusing by making it easy to identify correct focus, and a high eyepoint improves visibility when wearing eyeglasses.

Optional focusing screens to suit your shooting style

According to your preference or shooting needs, the standard Type G spherical acute matte focusing screen that comes with the $\alpha 900$ can be replaced with an optional Type L spherical acute matte screen or Type M super spherical acute matte screen. The L type features grid lines to enable easier framing, while the Type M is particularly well-suited to bright lenses with an aperture of F2.8 or greater, and features a high-dispersion screen that makes it easier to fine-tune the focus manually.

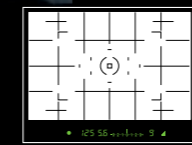
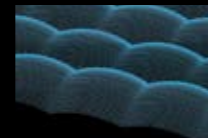


Super spherical acute matte



Type M focusing screen
FDA-FM1AM

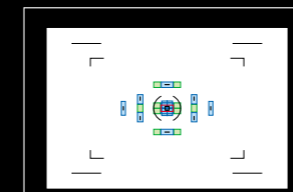
Spherical acute matte



Type L focusing screen
FDA-FL1AM

9-point autofocus system with additional wide-area 10-point assist

A versatile new center dual-cross 9-point AF sensor system provides fast, accurate autofocusing to ensure fewer missed shots. Featuring 10 additional sensors to assist in subject detection when Wide AF is selected, it also offers improved out-of-focus detection to reduce focus hunting, and has a dedicated sensor in the center of the frame to enhance accuracy when shooting at apertures of F2.8 or larger.

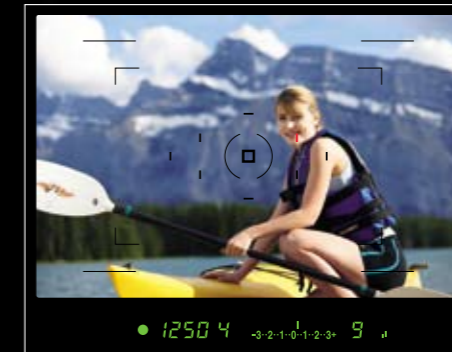
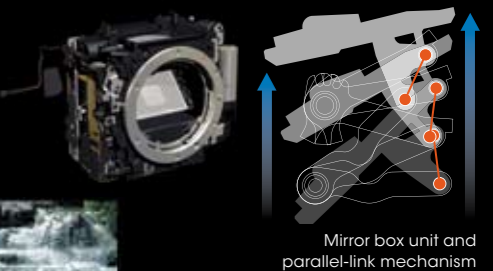


■ AF sensors ■ AF assist sensors



24.6-megapixel full-resolution continuous shooting up to 5 fps

Full-resolution 24.6-megapixel imaging at speeds of up to about 5 fps is made possible by powerful Dual BIONZ™ image processing engines and a high-power coreless motor. In addition, a new high-speed moving-magnet actuator and parallel-link mechanism are used to drive the camera's large swing mirror, enabling you to enjoy virtually 100% view-finder coverage without sacrificing continuous shooting speed. So you can capture the perfect moment even when you're shooting sports or other active subjects, and still enjoy the rich color and exquisitely fine detail that are a hallmark of the $\alpha 900$'s 24.6-megapixel 35mm full-frame imaging.



Screen images simulated.

The finest build quality, to match the finest imaging

Rugged, magnesium-alloy body for reliability and durability

The body of the α 900 reflects the same high quality and attention to detail as the images it delivers. Ruggedly constructed for years of dependable service, it features a front, back, and top made of strong, durable magnesium alloy, an interior chassis made of high-tensile aluminum, and a mirror box made of high-rigidity polycarbonate resin reinforced with carbon fibers. Superb balance, handling, design and finish of the exceptionally easy-to-hold grip reflect the experience Sony has in developing broadcast-use video cameras and camcorders.

High-endurance shutter unit for trouble-free shooting

Long-term reliability is also assured by a high-precision shutter unit that offers outstanding durability under heavy use. It's built to withstand the performance demands of 1/8000 sec. shutter speeds and up to 5 fps continuous shooting with a 35mm full-frame sensor and a standalone unit service life of 100,000 shutter release cycles (approx.).



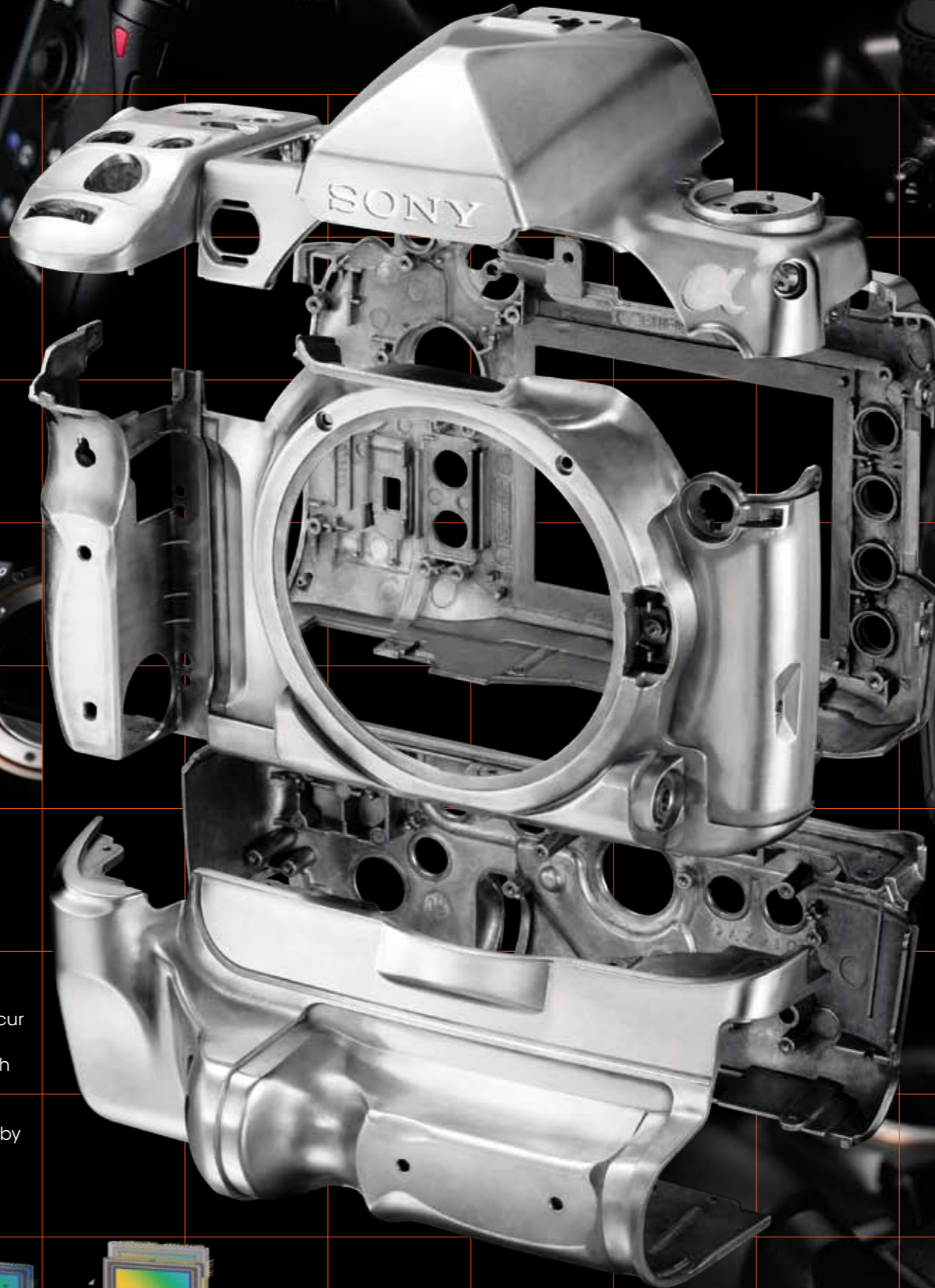
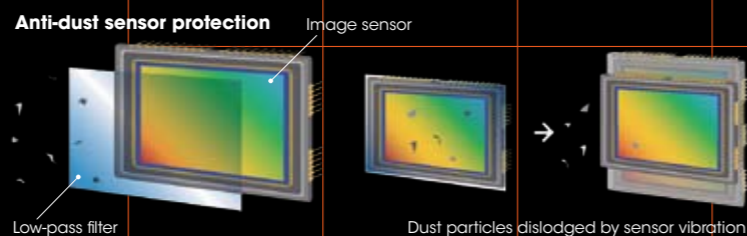
Worry-free outdoor shooting

To allow worry-free shooting in adverse environmental conditions,⁴ the α 900's controls, terminals, viewfinder, and other sensitive components are protected from dust and moisture by rubber seals.



Anti-dust sensor protection for cleaner images

To help protect the camera's sensor from dust contamination that can occur when changing lenses, an anti-dust mechanism vibrates the sensor at high speed every time the camera is switched off. In addition, the low-pass filter in front of the sensor is protected by a special anti-static coating to help prevent dust adherence.



Intuitive control layout for enhanced operating ease

In addition to superb handling and balance, the α 900 also features an improved control layout for fast, intuitive operation. Essential settings are easy to adjust without taking your finger off the shutter button. All controls are comfortably positioned to allow trouble-free operation even when wearing gloves.

Easy vertical-format shooting

The optional VG-C90AM vertical grip enables you to enjoy the α 900's superb handling and operating ease even during vertical-format shooting. Featuring the same rugged and lightweight magnesium-alloy construction as the α 900, it's sealed against dust and moisture,⁴ and has a full complement of buttons and switches for essential shooting functions. For increased shooting time, it holds two InfoLITHIUM[®] (NP-FM500H) rechargeable batteries, automatically switching to the second one when the first one runs out.



High-density InfoLITHIUM battery

The α 900 uses an advanced high-density InfoLITHIUM battery (NP-FM500H), and keeps you informed of current battery life by displaying remaining power in precise 1% increments on the camera's LCD monitor.



35mm F1.4 G (SAL35F14G), 1/250 sec., F5.6, ISO 200, white balance: daylight

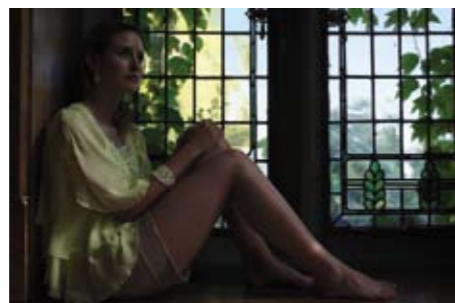
Advanced Level mode (Lv2)

D-Range Optimizer

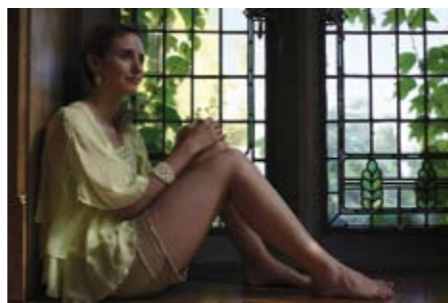
D-Range Optimizer for rich tone gradations in high-contrast light

When photographing scenes that contain extremes of light and shadow, it can be difficult to capture the full range of tonal gradations that the human eye can see. But with the α 900's D-Range Optimizer function, the camera analyzes the scene for you, and automatically adjusts gradation reproduction parameters to assure optimum exposure balance, with richer highlight and shadow detail.

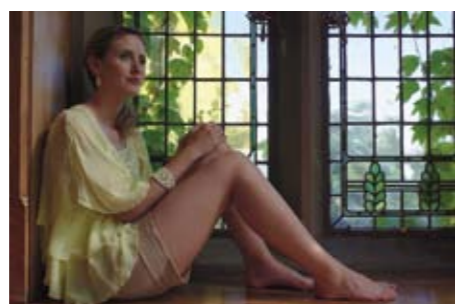
In Standard mode, the D-Range Optimizer analyzes the overall image before performing the optimization, and in Advanced mode,⁵ it analyzes each area of the composition separately. On the α 900, improved algorithms provide even better performance, with a choice of Advanced Auto and Advanced Level



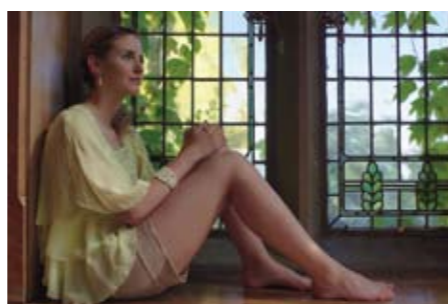
D-Range Optimizer off



Standard mode



Advanced Auto mode



Advanced Level mode (Lv3)

settings you can use to help you capture the level of highlight and shadow detail you want. In addition, there's a D-Range Optimizer bracketing function that records images at three different optimization levels to allow best-shot selection.

Light and shadow are at your command

3 high-precision metering modes for greater shooting versatility

The α 900 is equipped with a 40-segment honeycomb-pattern metering sensor that uses advanced algorithms to ensure balanced exposures under a wide range of lighting conditions. A convenient 3-way switch on the back of the camera allows you to choose between 40-segment honeycomb-pattern metering, center-weighted metering, or spot metering according to your shooting needs.



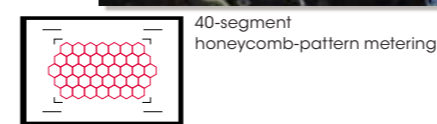
P Program auto mode
A Aperture priority mode
S Shutter speed priority mode
M Manual exposure mode

Quick access to exposure modes.

Standard exposure modes accessible from the top-mounted mode dial include Program Auto, Aperture priority, Shutter-speed priority, Manual, and Auto.

Versatile white balance settings for superior color in any light

The α 900's versatile range of white balance settings can be instantly accessed via a button on the top of the camera. In addition to Auto white balance mode there are user-tunable presets for Daylight, Shade, Cloudy, Tungsten, Fluorescent, and Flash lighting, as well as an adjustable Color Temperature mode and three user-configurable Custom modes. White balance bracketing, which records a single frame at three different white balance settings, can also be set via the Drive mode menu for easy best-shot selection.



Exposure bracketing up to $\pm 2EV$ for secure "best-shot" capture

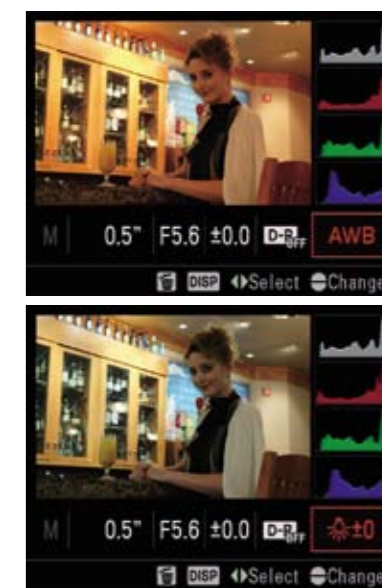
Exposure bracketing can be set via the Drive mode button to enable best-shot selection from a series of images. In keeping with the α 900's high performance standards, the range of

selectable options includes 3-frame or 5-frame bracketing in 0.3EV, 0.5EV, or 0.7EV increments, as well as new 3-frame $\pm 2EV$ bracketing that makes it easy to create stunningly realistic high dynamic range composite images.



Exposure effect simulation

Another advanced function introduced for the first time on the α 900 is Intelligent Preview. Using this function, you can simulate the effect of various D-Range Optimizer, exposure compensation, and white balance settings, and display the result on the LCD monitor without actually taking a picture. It's a great way to fine-tune image adjustments in advance when working with a tripod and complex shooting setups.



Simulation of Auto and Tungsten white balance mode effects.

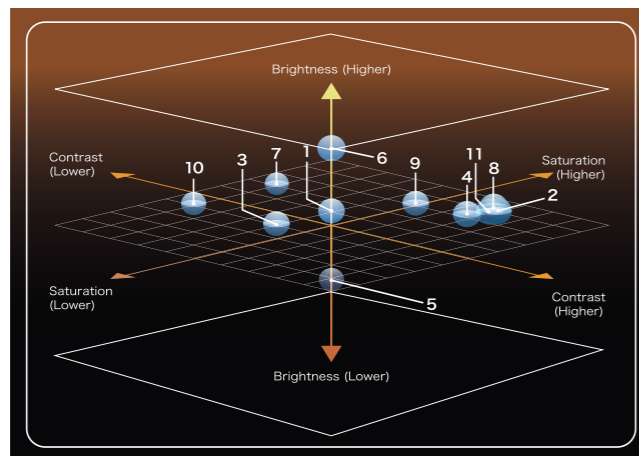
Unlimited creativity and image control



Vario-Sonnar T* 16-35mm F2.8 ZA SSM (SAL1635Z), 1/100sec., F11, +0.7 EV, ISO 200, white balance: daylight

B/W Image Style

Creative Style



Creative Style image matrix

In addition to the parameters shown in this diagram, each Creative Style setting also has a different effect on color reproduction, white balance, sharpness and tone curve, providing exceptionally fine control over the final image. (Selecting a different Creative Style setting will not produce the same results even if the basic brightness, contrast and saturation settings are the same.)

1) Standard, 2) Vivid, 3) Neutral, 4) Clear, 5) Deep, 6) Light, 7) Portrait, 8) Landscape, 9) Sunset, 10) Night view, 11) Autumn leaves



Vivid Image Style



Landscape Image Style



Night View Image Style

Express your personal vision

The α 900's Creative Style options are designed to make it easy for you to achieve your artistic and photographic goals. A total of 13 Image Styles is offered, and all of them can be customized to suit your preference. Adjustment parameters include contrast, saturation, sharpness, brightness and zone matching (no saturation adjustment on monochrome Sepia or B/W), enabling you to achieve the precise tonalities and artistic effect that your creative goals require.



Creative Style settings

Standard	Rich tonal gradation and color; suitable for a wide range of subjects and scenes
Vivid	Heightened contrast and saturation; suitable for subjects such as flowers, spring foliage, sky scenes and ocean views
Neutral	Attenuated saturation and sharpness; provides a neutral starting point for images that are to be post-processed
Clear	For clear images with limpid colors in the highlights; helps evoke a sense of radiant light
Deep	For images with deep and dense color; helps evoke a sense of depth and solidity
Light	For images with bright, uncomplicated color expression; helps evoke a light, refreshing ambience
Portrait	For images with rich, natural skin tones; ideal for portraits
Landscape	Heightened contrast, saturation and sharpness for crisp detail and vivid color; ideal for landscapes and scenic views
Sunset	Saturated reds for warm, beautiful images of the setting sun
Night view	Attenuated contrast for more faithful reproduction of night view tonalities
Autumn leaves	Saturated reds and yellows for scenic views of autumn foliage
B/W	For black and white images
Sepia	For monochromatic sepia-tone imaging



Image Data Converter SR for image conversion and editing

Powerful new Image Data Converter SR software enables quick, responsive conversion and editing of full-resolution 24.6-megapixel RAW data image files. It also features an intuitive new interface for easy adjustment of exposure, white balance, contrast, hue, sharpness and tone curve. It also boasts an improved D-Range Optimizer function and a new Peripheral Illumination function that compensates for light fall-off at image corners caused by vignetting.



Image Data Lightbox SR for image comparison and sorting

Our Image Data Lightbox SR software for comparing, sorting, and organizing RAW and JPEG images has also been updated to offer faster thumbnail display, more filtering options, and improved compatibility with Remote Camera Control software. The enhanced filtering options now include the ability to sort by camera or lens model name, or by color label or user rating. In addition, support for drag & drop selection of images to be previewed or compared allows faster and more intuitive photo library management.



Remote Camera Control

Improved Remote Camera Control software expands your shooting horizons by enabling you to capture images remotely and record them directly on your computer's hard disk drive. A new interval recording function⁶ has also been added to the program's impressive feature set, which includes virtually all basic camera controls, as well as white balance, image quality, and D-Range Optimizer settings.



PMB (Picture Motion Browser) for easy photo library management

Offering an extremely easy and intuitive way to organize and browse your photo library, PMB is perfect for day-to-day image file management. Photos can be quickly organized into folders, tagged, ranked and titled to make them easier to find later on. In addition, a new Face Search function helps you locate other photos in your library in which a particular person appears.

System requirements

	PMB	Image Data Converter SR / Image Data Lightbox SR / Remote Camera Control	
		Microsoft Windows	Macintosh [®]
OS ⁷	Windows Vista [®] / Windows 2000 Vista [®] / Windows XP SP3 / Windows Vista [®] SP1	Windows XP SP3 / Windows Vista [®] SP1	Mac OS X (v 10.4 / v 10.5)
CPU	Pentium [®] 4, or faster	Pentium 4, or faster	Power PC G4 / G5 Intel [®] Core™ (1.0GHz or faster recommended) Intel Core Solo / Core Duo / Core 2 Duo, or faster recommended
Memory	256MB, or more	1GB, or more	1GB, or more

Experience a new digital lifestyle



Screen images simulated.

PhotoTV HD

Turn your Sony® BRAVIA® HDTV into a personal digital art gallery

For the ultimate experience in home viewing pleasure, simply connect the α 900 directly to a compatible Sony BRAVIA HDTV. The TV will automatically switch to PhotoTV HD mode, enabling you to enjoy and share your photos in a dramatic new way. It's a completely new viewing experience, one that combines the clarity, color fidelity and rich contrast of positive film with the big-screen impact of a slide projector.

From breathtaking scenic photos and landscapes to photos of your family and friends, BRAVIA PhotoTV HD brings out radiant beauty in every detail, filling the room with luminous, high-resolution images that launch photography into a new dimension. It's like having a digital art gallery right in your own living room.



Remote, camera, HDMI™ cable and HDTV all sold separately.



Enjoy the unlimited freedom of your own Sony digital network. Sony offers an ever-growing range of products to help you share and enjoy the beauty of high-definition digital imaging. From digital cameras and camcorders to Blu-ray Disc™ recorders, televisions and personal computers, the world of Sony digital networking gives you new ways to enjoy and interpret your photographic creativity.



VAIO® computers
With their powerful graphics-handling capabilities and ultra-sharp displays, Sony VAIO computers are an ideal choice for digital photography enthusiasts, and a great companion to the α 900.



Digital Photo Frames
Available in a variety of sizes and styles, Sony S-Frame™ digital photo frames are the perfect way to enjoy an endlessly repeating, radiantly beautiful backlit slideshow of your favorite images at any time of day, in virtually any room in the house.

Screen images simulated.

Attention to detail that makes shooting a breeze



1. Press 2. Adjust



Quick navigation for one-handed setting selection

A quick press of the Function (Fn) button on the rear of the α 900 switches the LCD monitor from standard information display to Quick Navi information display. From there, you can quickly adjust essential shooting parameters by operating the multi-selector with your thumb, or by rotating the front or rear control dial, enabling you to change settings on the fly without interrupting your creative flow.

Instant access to your favorites settings

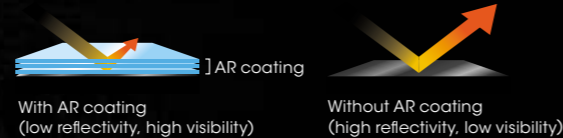
Up to three combinations of your frequently used modes and settings can be stored and accessed via the mode dial on the top of the camera. When you want to apply the settings again, simply select the corresponding number on the mode dial and you're ready to shoot.



3" Xtra Fine LCD (approx. 920,000 dots)



3" conventional LCD (approx. 230,000 dots)



Single-frame view (with shooting info)



Single-frame view (with four previous/following images)



RGB histogram display



25-frame index view

3-inch (10) Xtra Fine LCD™ display¹⁰ for sharp, clear image review in any light

On-the-spot image review is easy thanks to a 3.0" Xtra Fine LCD monitor¹⁰ with a screen resolution of 270 ppi (approx.), which is even higher than the 220 ppi resolution generally considered to be the upper limit of what the human eye can perceive. Hybrid construction and an anti-reflective coating improve monitor visibility when shooting outdoors. There is a wide choice of index view options to facilitate best-shot selection, including a full-featured RGB histogram and shooting information display.

Easy access to frequently used menu settings

The Custom button on the rear of the camera is set to open the Creative Style menu by default, but it can be assigned to perform any of 15 other tasks according to your preference.



Lens-specific focus tuning with AF Micro Adjustment

With AF Micro Adjustment switched on, you can fine-tune the AF focus point for up to 30 different lenses in ± 20 -step increments. Adjustments can then be stored in the camera's memory and will automatically be applied when the same lens is mounted again.

Mirror Lockup mode

A Mirror Lockup mode enables you to prevent mirror movement when taking vibration-sensitive macro or high-power telephoto shots.



Built-in eyepiece shutter

The built-in eyepiece shutter prevents extraneous light from entering the eyepiece and skewing exposure values.

At-a-glance settings confirmation

A backlit LCD panel on the top of the camera enables quick confirmation of battery level and frames remaining, and displays drive mode, shutter speed, aperture, and exposure compensation information whenever the corresponding setting is changed, and it is inconvenient to use the main LCD.

Adobe RGB color space support

In addition to the sRGB color space supported by virtually all computer monitors and modern inkjet printers, the α 900 supports the wider color gamut of the Adobe RGB color space that is used by many professional printers.



Dual memory card slots

Support for both CompactFlash[®] and Memory Stick Duo[™] recording media¹¹ (both sold separately) enables you to load both types of media and switch between them via the Quick Navi information display.

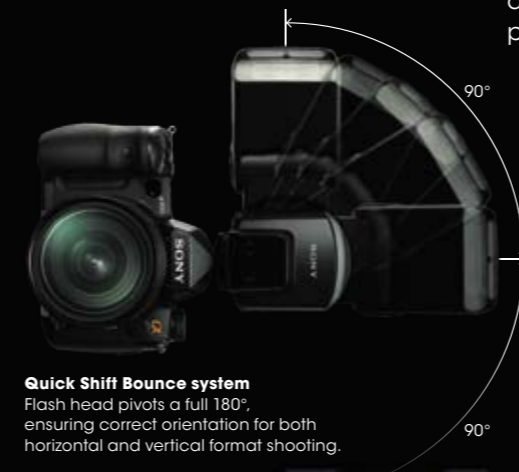




Illuminate your subject, and your creative spirit

The ultimate flexibility of Quick Shift Bounce flash

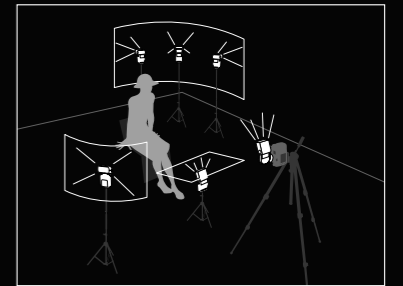
The α lighting system offers a full range of external flash units to suit virtually any shooting situation. At the top of the line stands the HVL-F58AM, a revolutionary new flash with a Quick Shift Bounce system that allows the head to pivot 90° left or right, enabling you to maintain correct camera/flash orientation during both horizontal and vertical format shooting. Class-leading GN58 (105mm, ISO100·m) power and 6-level zoom support a wide range of lenses, with auto-optimized flash coverage to enable use with both APS-C and 35mm full-frame sensors.



Quick Shift Bounce system
Flash head pivots a full 180°, ensuring correct orientation for both horizontal and vertical format shooting.

A host of advanced features, plus wireless multi-flash control

The powerful HVL-F58AM recharges in as little as 3 seconds with nickel metal hydride batteries (NiMH) and offers high-speed synchronization at speeds of up to 1/8000 of a second, as well as color temperature-based white balance compensation, ADI (Advanced Distance Integration) flash metering, and a large, easy-to-read LCD panel. It also comes with a mini-stand for wireless off-camera operation, and can be used to control sophisticated multi-flash setups comprising up to three flash groups, with automatic flash ratio calculation to ensure that each flash provides the precise amount of illumination needed to produce the results you want.



Three-group wireless multi-flash setup with flash ratio control
Group 1: on-camera flash unit and master control
Group 2: off-camera flash units left front and center low
Group 3: off-camera flash units right rear
Flash ratio: 1 (Group 1): 4 (Group 2): 16 (Group 3)



Flash head can be angled down by 10° or up by 150°



Flash
HVL-F58AM
GN58 (105mm, ISO100·m) power with Quick Shift Bounce system, wireless multi-flash control, high-speed sync, built-in diffuser lens, wide panel and catch light sheet.



Flash
HVL-F42AM
GN42 (105mm, ISO100·m) power with variable-angle head, wireless flash support, high-speed sync, built-in wide panel and detachable diffuser lens.

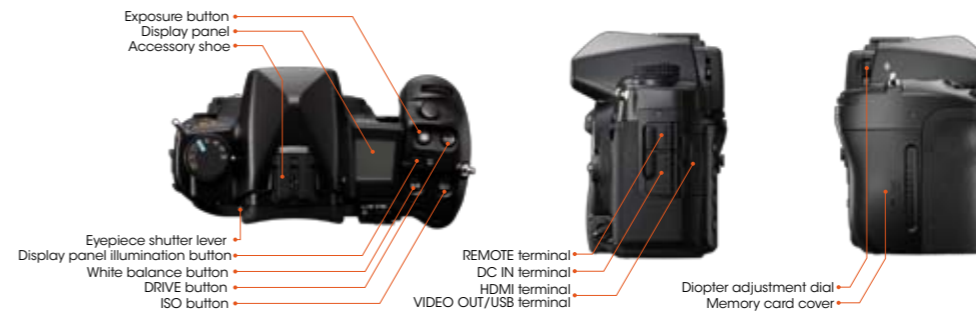


Macro twin flash kit
HVL-MT24AM
A versatile dual-head unit for macro shooting, with a low-power modeling function to enable pre-shot confirmation of shadow formation.

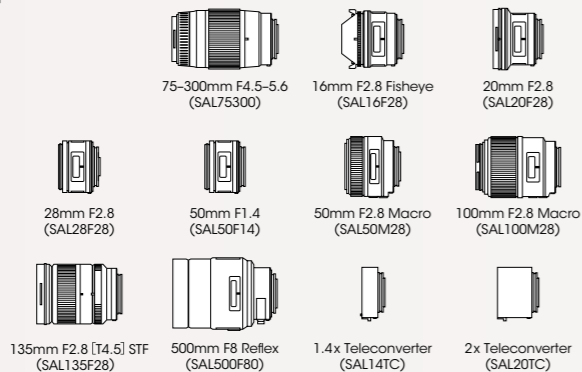


Ring light
HVL-RLAM
A ring-shaped light for macro shooting, with full-circle output for shadowless illumination and half-circle output for contrast and depth.

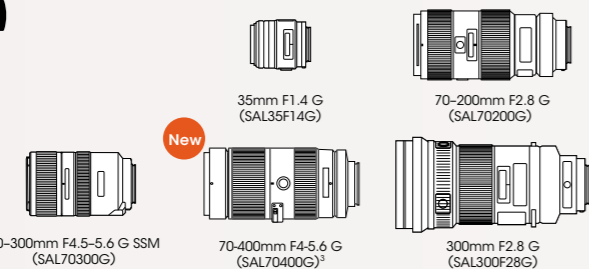
Controls



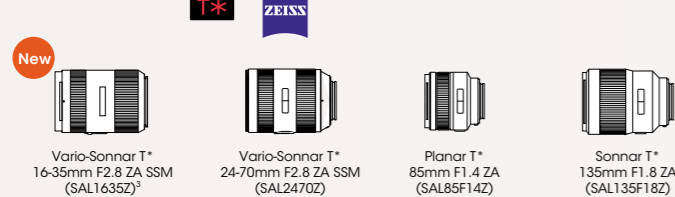
α lens lineup



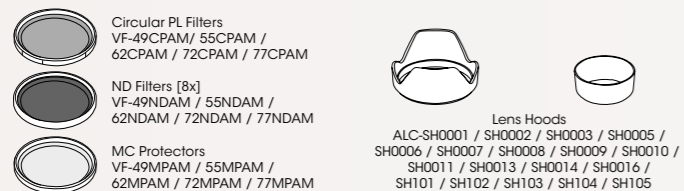
G lenses



Carl Zeiss® lenses



Lens accessories



α system accessories

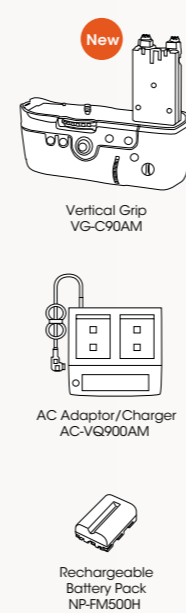
An unlimited range of photographic and creative possibilities to explore.

The α system is designed to offer you a lifetime of satisfaction and an unlimited range of exciting new possibilities to explore. Wherever your photographic interests lead you, you'll find an ever-growing lineup of high-quality α system lenses, flash units and other accessories to help you achieve your creative goals.

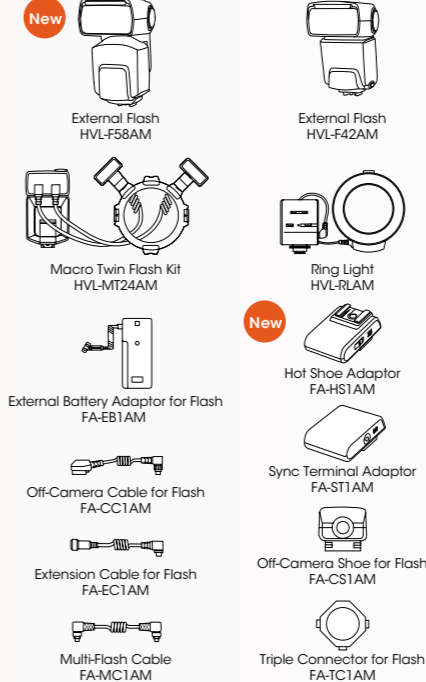
α900



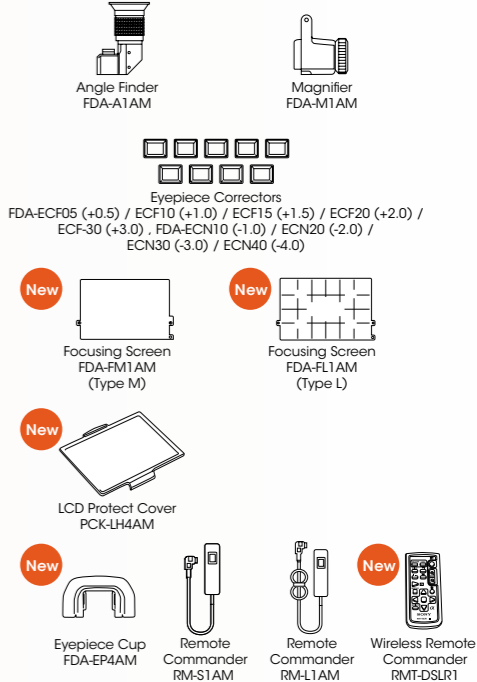
Batteries / Grip & Charger



α lighting system



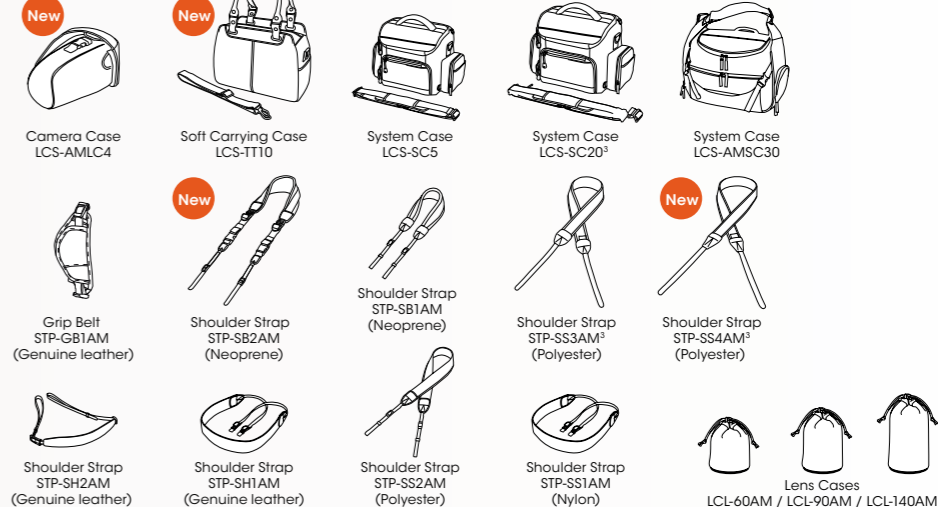
Shooting accessories



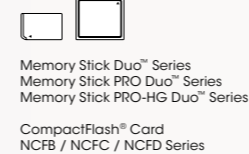
GPS units



Cases & Straps



Memory cards



The Sony digital network for beautiful imaging



VAIO® Computers



PLAYSTATION®3 Computer Entertainment System



Blu-ray Disc™ Players



BRAVIA® HDTVs



S-Frame Digital Photo Frames



Picture Station™ Digital Photo Printers

Screen images simulated.

● Availability depends on areas

Free Manuals Download Website

<http://myh66.com>

<http://usermanuals.us>

<http://www.somanuals.com>

<http://www.4manuals.cc>

<http://www.manual-lib.com>

<http://www.404manual.com>

<http://www.luxmanual.com>

<http://aubethermostatmanual.com>

Golf course search by state

<http://golfingnear.com>

Email search by domain

<http://emailbydomain.com>

Auto manuals search

<http://auto.somanuals.com>

TV manuals search

<http://tv.somanuals.com>