



Sony VAIO VGX-XL201 Media Center PC

Clean Install Guide

Version 1.0

Author: William Warby

Introduction

When I purchased my VGX-XL201 Media Center PC, I fully expected it to arrive preloaded with a myriad of freeware, trialware and Sony-branded software products and I wasn't wrong. Such is the trend when you buy almost any PC these days, and I don't doubt that many consumers are very grateful for it. I am not one of those consumers. I know what software I want for any particular job, and invariably it isn't the software provided by Sony. Also, due to the pace of software development, by the time you receive your PC, most of the freeware software will be out of date, and Sony, like most PC manufacturers these days have a tendency to give you old versions of retail applications like Adobe Photoshop Elements or WinDVD.

In their efforts to make life easier for novice PC users, Sony inadvertently make the process of escaping from the factory installed image difficult, even for competent PC users. They create a hidden partition on the hard disk that contains the factory installed image and provide software to back up that partition to a pair of recordable DVDs. This makes it possible to dispense with the hidden partition and recover the disk space, and also provides the means by which you can extract the essential drivers and utilities that make a clean install possible. What Sony don't do is give you an OEM operating system CD or any means to install an operating system other than by re-imaging the PC back to it's factory default settings.

This guide is intended for anyone who, like me, wishes to install the operating system of their choice without the software baggage that comes with the factory installed image. It goes into enough detail that a novice user should be able to follow it, but it is really intended for intermediate to advanced PC users. If you don't know what you're doing, you could get yourself into a terrible mess by following this guide and of course it goes without saying that I accept absolutely no responsibility for any damage or inconvenience whatsoever resulting from the use of this guide. It is provided in the hope that it will be useful, but it's use is entirely at your own risk. The guide will deal specifically with installing the Windows XP Media Center Edition 2005 operating system on a Sony VAIO VGX-XL201 Media Center PC. However, the concepts described in this guide are likely to be largely relevant to similar operating systems like Windows XP Professional, and media center PCs like the Sony VAIO VGX-XL202. When Windows Vista ships in January 2007 I will probably create a new version of this guide dealing specifically with that operating system for the VGX-XL201.

Product Keys

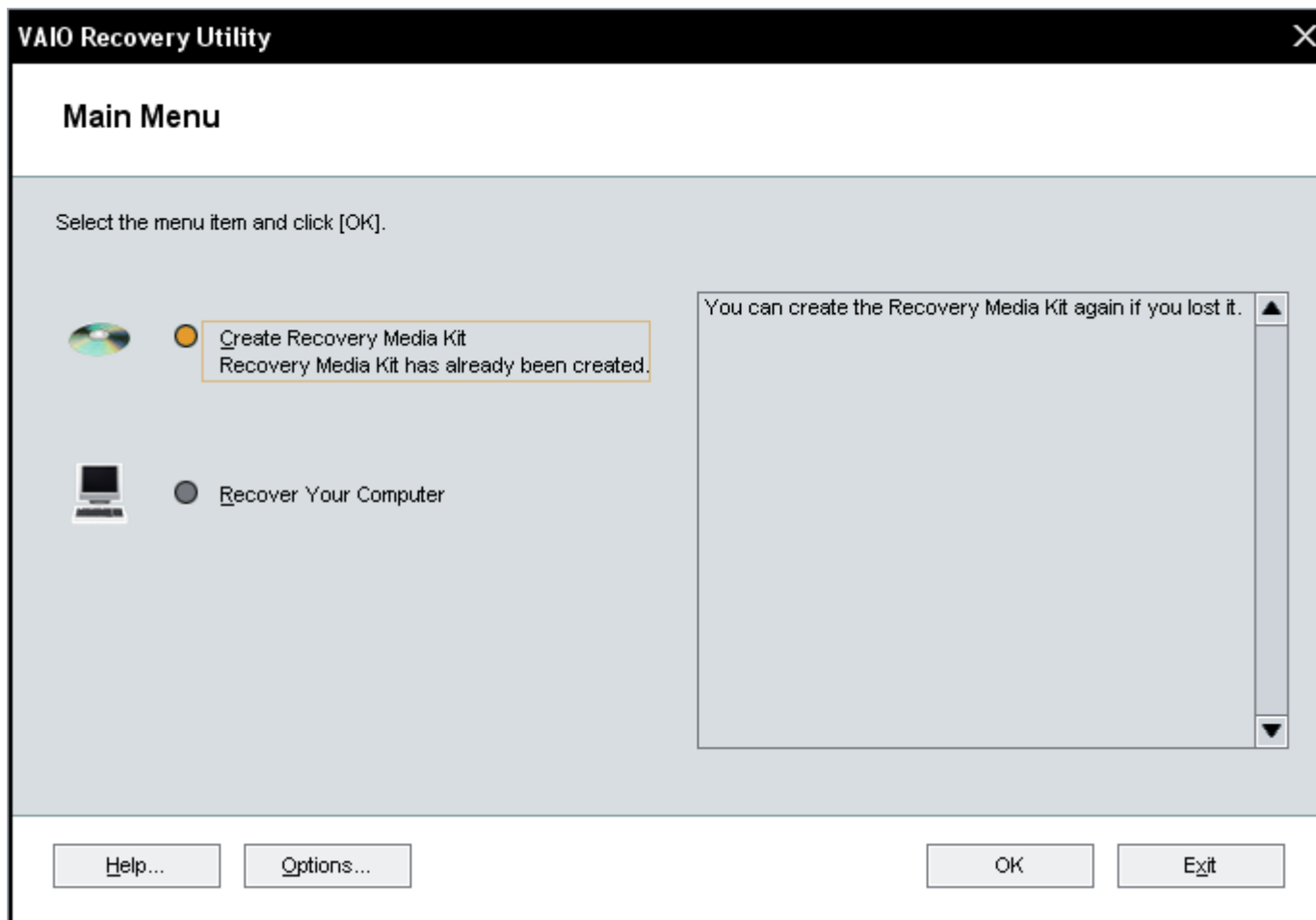
This guide was written with the assumption that methods described in Club VAIO forum threads for using the Windows product key from the sticker on the back of your PC would work in this slightly different scenario. My experience has been that following the instructions in this guide to the letter, I was unable to activate Windows after installation using the product key on my PC, although it happily let me install Windows. The Media Center CDs I used came from my MSDN Professional subscription, and I can confirm that the method described in this document works perfectly with the product key from that source. Because this works for me, I may or may not undertake further investigations into why the product key that came with my VAIO didn't work – it could be the process I used to create the CD, it could be my product key itself, the CDs I used to make the custom operating system install image or it could be something else I haven't thought of.

If you can shed any light on whether the methods described in this guide work for you using the product key on your PC and why that might be, please tell me via the Club VAIO forums so that I can update this document.

Creating the Recovery DVDs

When you first power on your PC, you will have to go through the motions of finalising your installation of Windows. This involves pairing the wireless keyboard to the PC, choosing regional settings and time zone, accepting Microsoft's EULAs, enabling automatic updates, naming your computer, setting an Administrator password, registering with Microsoft (or not) and setting up your first user account. It doesn't matter at all what you do with any of these settings for the purposes of this guide.

When you have booted into the operating system, you might see a balloon message in the system tray appear reminding you to create your recovery DVDs. It will belong to a tray icon that is vaguely recognisable as a CD and a pen. Double click this icon (or select "VAIO Recovery Utility" from the "VAIO Recovery Tool" program group in the Start Menu) to activate the recovery application.



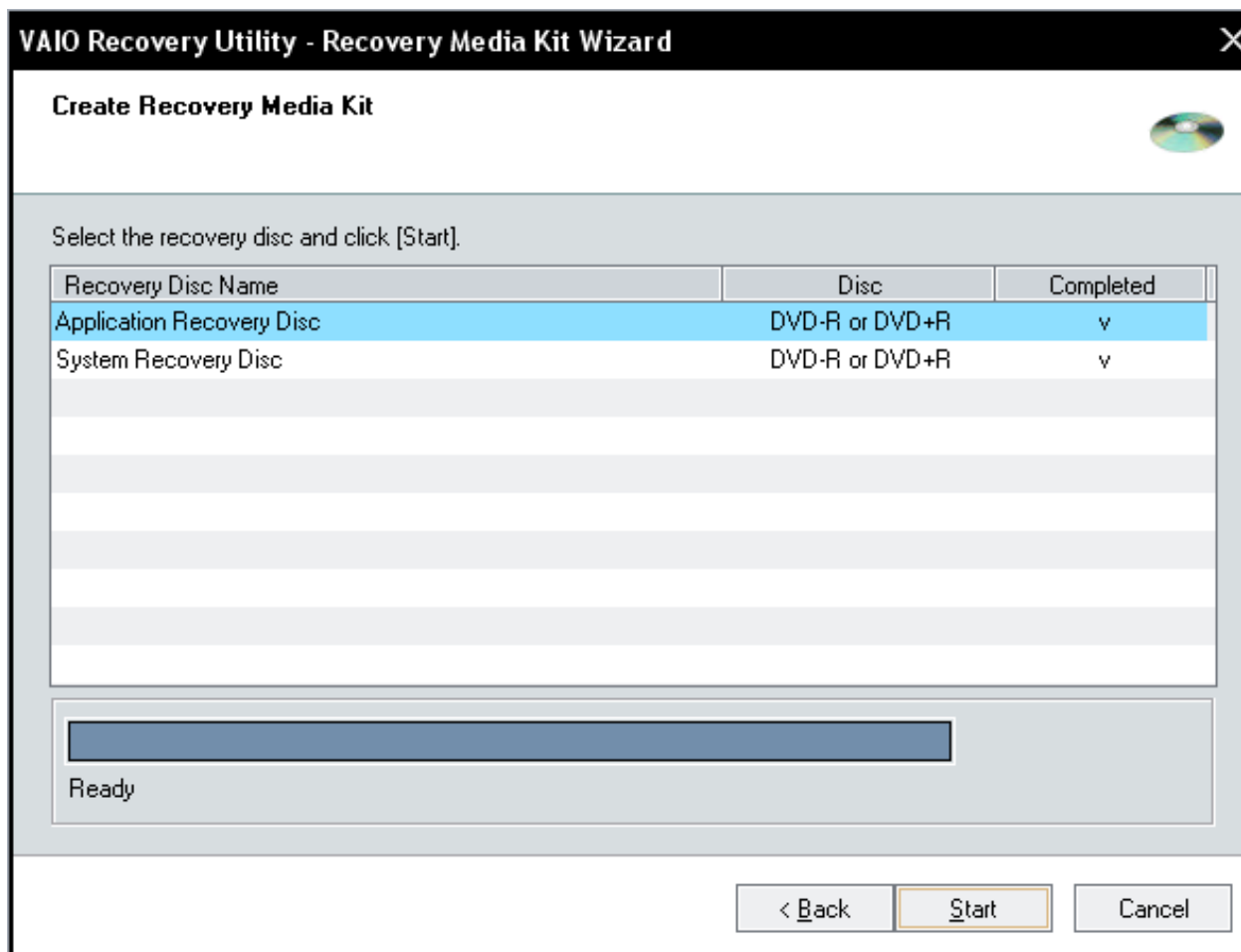
- Run the VAIO Recovery Utility and select “Create Recovery Media Kit”.
- Press “OK”.



- Press "Next".



- Choose the type of DVDs you want to burn. I don't have any double layer recordable DVDs mostly because they are hugely more expensive than single layer discs at the moment) so I used 2 DVD-Rs. I recommend doing the same since I this guide will assume the file structure of the 2 disc approach.
- Press "Next".



- Press “Start” and give feed the application with blank discs as required. I made two copies of each for good measure but you only need one set.
- Burning the discs on my VGX-XL201 took about 20 minutes for the Application Recovery Disc and 30 minutes for the System Recovery Disc.
- Label your DVDs as instructed by the application.

Returning to the Factory Installed Image

Should you ever feel the need, you can restore your system to its factory default image at any time using these discs by booting from the System Recovery Disc. When the System Recovery disc boots, you will have some options to choose from:

You can recover just the C: drive, leaving your D: drive in-tact. Useful if you want to get back to the factory default image without affecting your D: drive which probably has all your personal files on. Alternatively you can recover both the C: and D: drives. In either case, you have the option to adjust the sizes of the partitions for C: and D: although this adjustment is fairly restrictive; you can't set the C: drive smaller than 60GB (!) and you can't create additional partitions (although you could adjust your partitions later with a third party tool like Symantec's Partition Magic). You also have the option to remove the hidden recovery partition at this point.

Your other option is to do a complete factory reset which restores the hidden recovery partition from the DVDs recreates and restores both the C: and D: drives to their factory default sizes and content. This works from the recovery DVDs even if you have completely erased and the recovery partition and/or changed the partition table in other ways. I used this method to get back to the factory image for the purpose of creating this guide.

Preparing for the Custom Operating System Install Image

You need some files from the C: drive and from your System Recovery DVD. Although you can pull these files in when you need them from their current locations, for convenience I advise copying them so that you have everything you need all in one place (this is particularly useful if you want to make back up these files so that you can tweak your custom operating system image later).

Create the following folder structure:

```
C:
  \CleanInstall
    \Drivers
    \Hotfix
    \I386
    \OS_Custom
    \OS_Default
```

Files from the C: Drive

Copy the following files from C:\Windows\I386 to C:\CleanInstall\I386:

Tip: You may want to turn off the “Hide file extensions for known file types” option under Folder Options to make these files easier to identify.

OEMBIOS.BI_	OEMIGLIB.DL_
OEMBIOS.CA_	OEMLOGO.GI_
OEMBIOS.DA_	PIDGEN.DLL
OEMBIOS.SI_	SETUPP.INI
OEMCOA.JP_	DPCDLL.DL_
OEMIG50.EX_	

Note: These files are required to make your MCE 2005 CDs to accept the product key from your Sony VAIO computer. They are not visible on the recovery DVDs so the only way to extract them is from C:\Windows\I386 with the factory default image installed. **Do not skip over this step unless you don't want to use the product key provided with your VAIO PC.**

Files from the System Recovery DVD

Copy the contents of [System Recovery DVD]\VAIO Applications\Drivers to C:\CleanInstall\Drivers

Tip: These files can also be found at C:\Drivers, and can also be downloaded from the [VAIO Link website](#)

Copy the contents of [System Recovery DVD]\VAIO Applications\Hotfix to C:\CleanInstall\Hotfix

Tip: All of these hotfixes can be downloaded from [Microsoft's website](#), but not all of them will get installed automatically by running [Microsoft Update](#).

Optional:

Copy the contents of [System Recovery DVD]\VAIO Applications\Applications to a new folder C:\CleanInstall\SonyUtilities.

The above step isn't necessary for the clean install process as you only make use of these files after the custom operation system install image has been loaded. However, if you do it now, you can copy these files to the custom install CD and you no longer need the System Recovery DVD for any part of the imaging process should you want to do it again later.

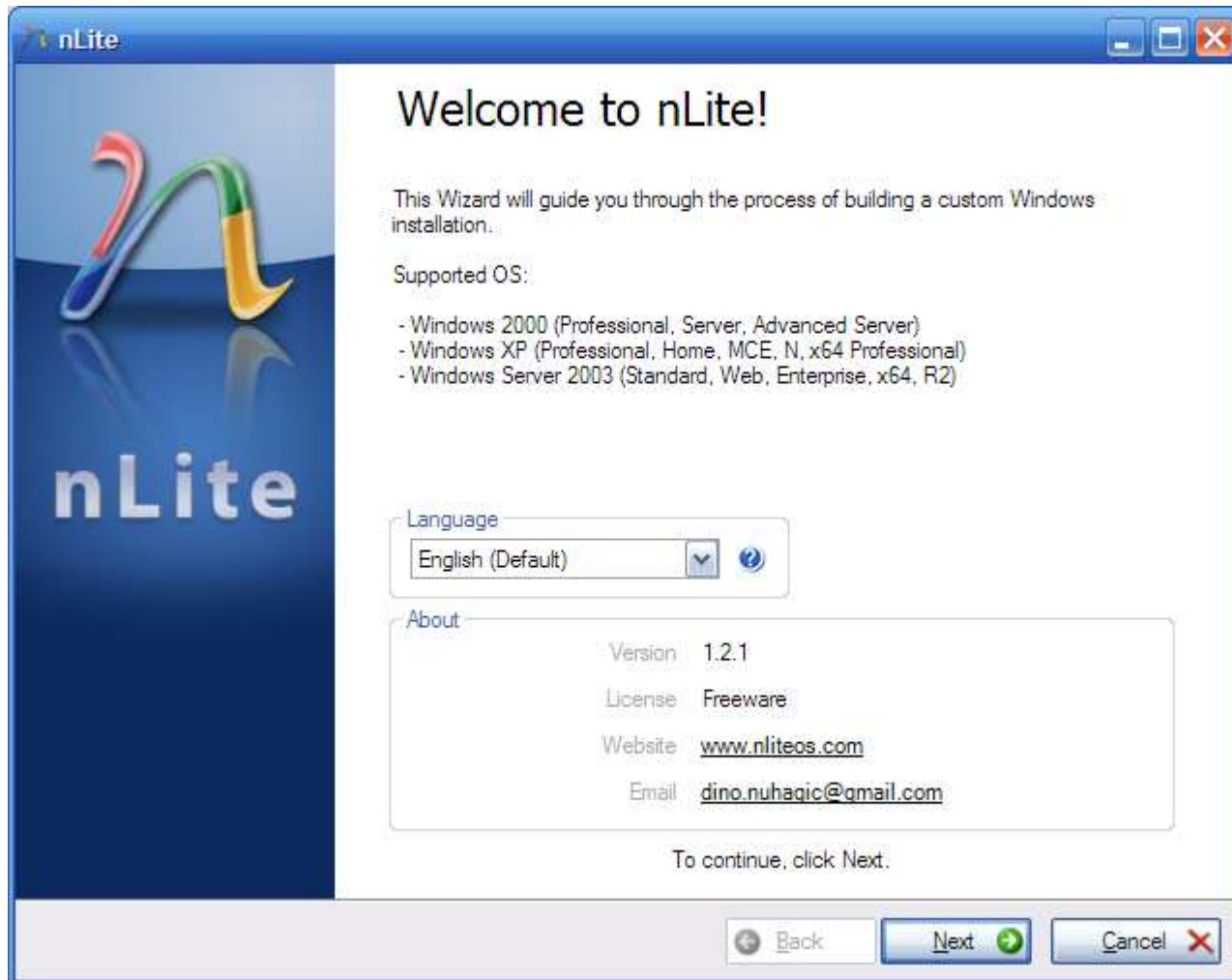
You are now ready to create your custom operating install image.

Creating the Custom Operating System Install Image

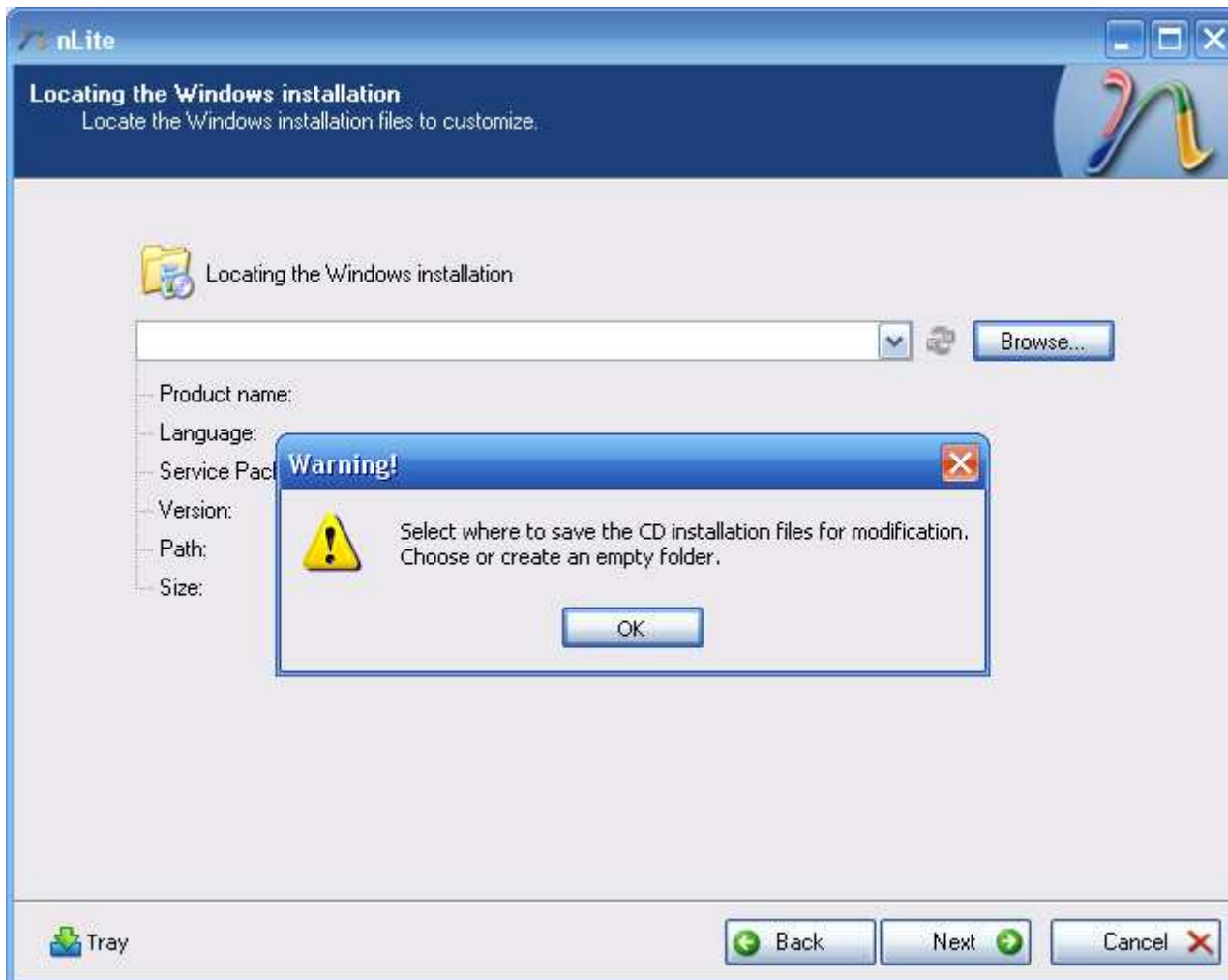
Sony do not provide you with an installable operating system CD, so you need to obtain one somehow. Windows XP Media Center Edition 2005, the operating system we will be using in this guide comes on two CDs. I don't know whether it is possible to obtain these CDs from Sony, because I am a Microsoft Developer Network subscriber, and my subscription grants me access to all of Microsoft's operating systems so I needed to look no further. It is possible to obtain the CDs from Internet sources like torrent sites. I don't know whether doing so is legal or whether CDs obtained from such sources would work reliably, but my feeling would be that it is the product key you use for the installation that determines the legality of your installation, and you will be using the legitimate product key on the sticker at the back of your PC. Obtaining a working copy of the MCE 2005 CDs is beyond the scope of this guide and I will assume from this point on that you have legally obtained copies of these CDs.

Now that you have your two MCE 2005 CDs, you need to download and install a brilliant little free application called nLite. This utility allows you to take a copy of your Windows operating system CDs, make changes such as embedding drivers, hotfixes, product keys and settings, then burn the image back to a bootable CD or DVD. It can be downloaded here: <http://www.nliteos.com>. This guide was written using version 1.2.1 of nLite.

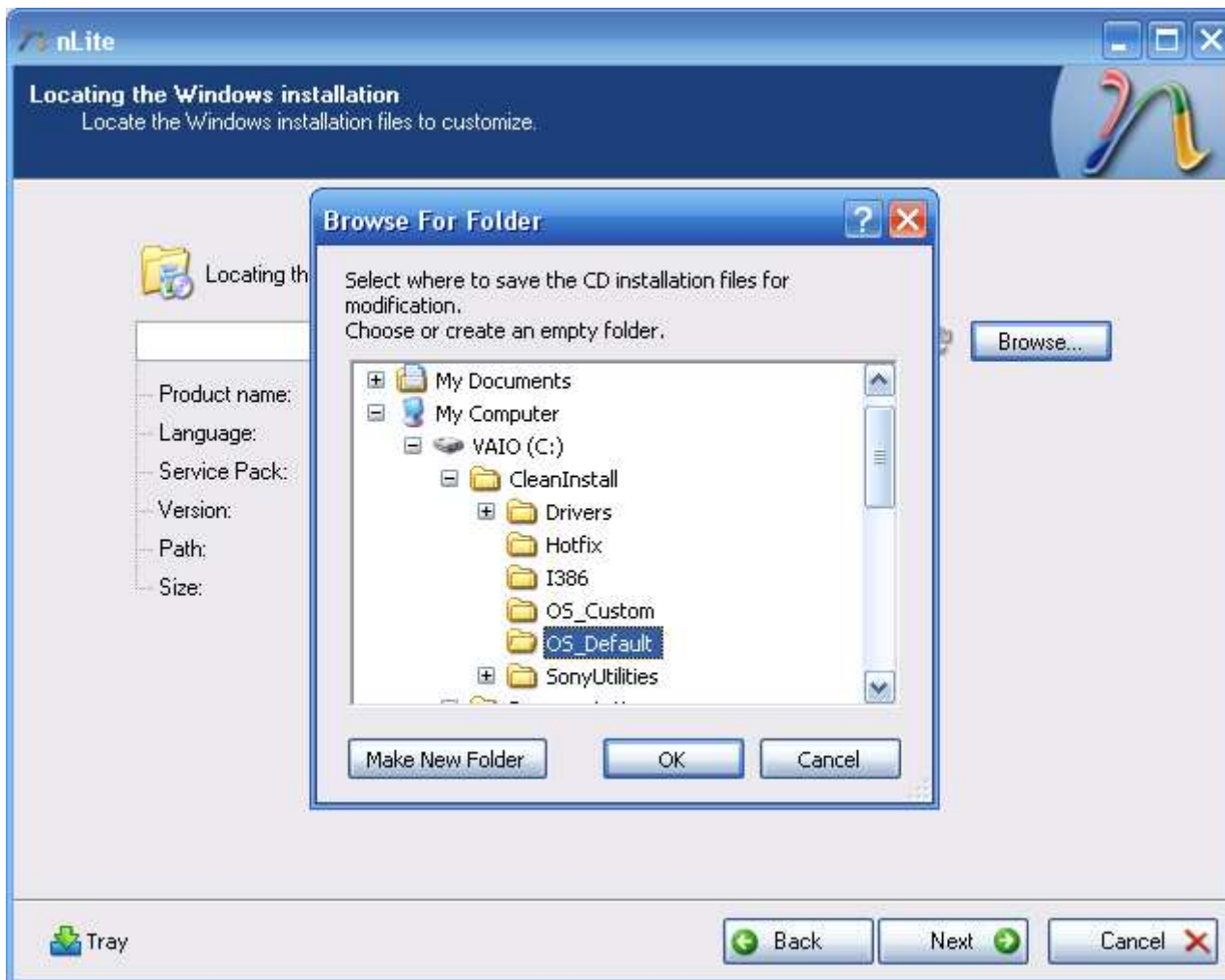
Note: Unless you have done it already, the nLite installer will make you download and install the .NET Framework 2.0. It will take you to the Microsoft URL to do this, and after you have installed the framework you will have to restart the nLite installer.



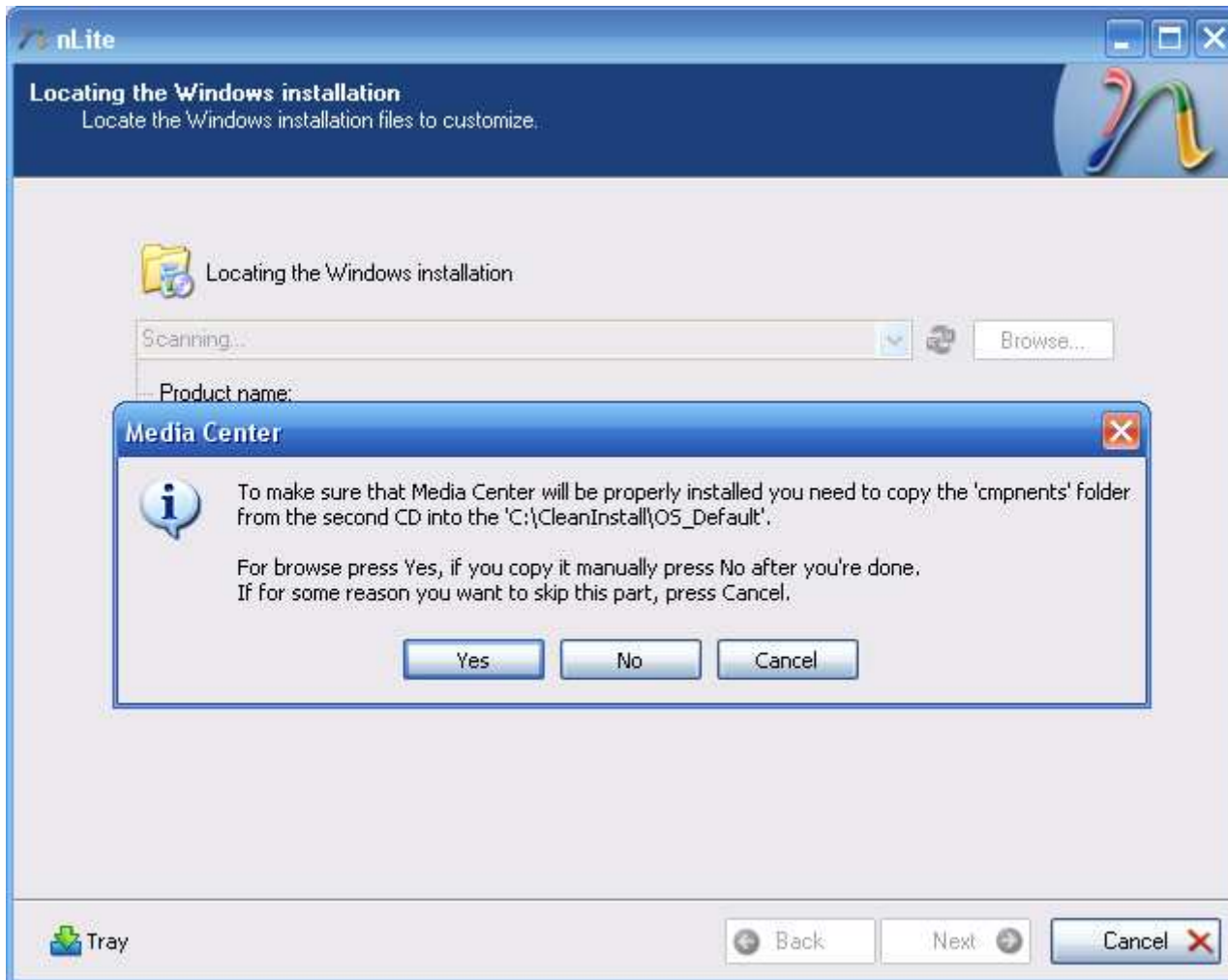
- Run nLite and press “Next”.



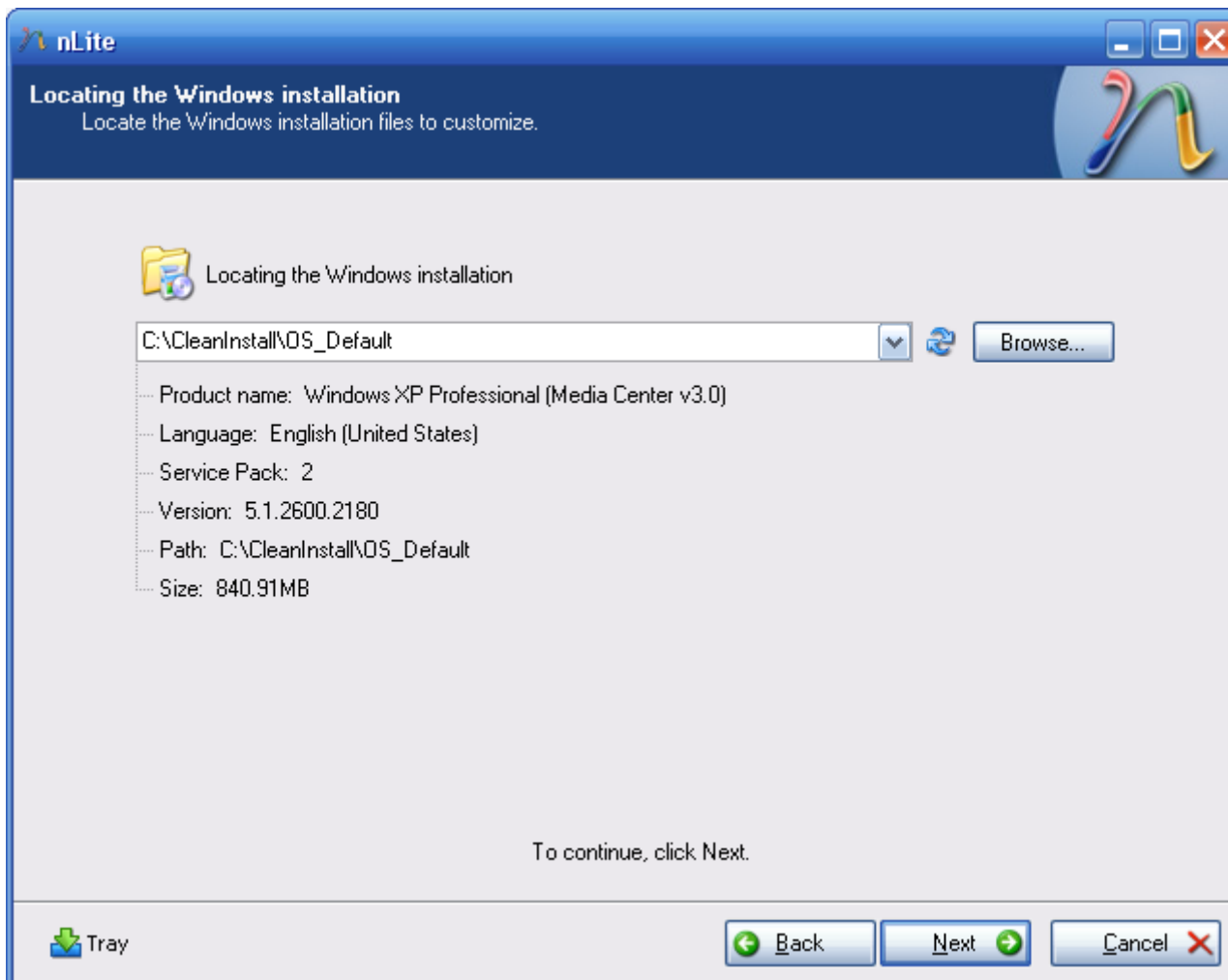
- Insert MCE 2005 CD1 and press “Browse...” to select your DVD drive.
- nLite will ask you where you want to save the CD installation files for modification. Click “OK”.



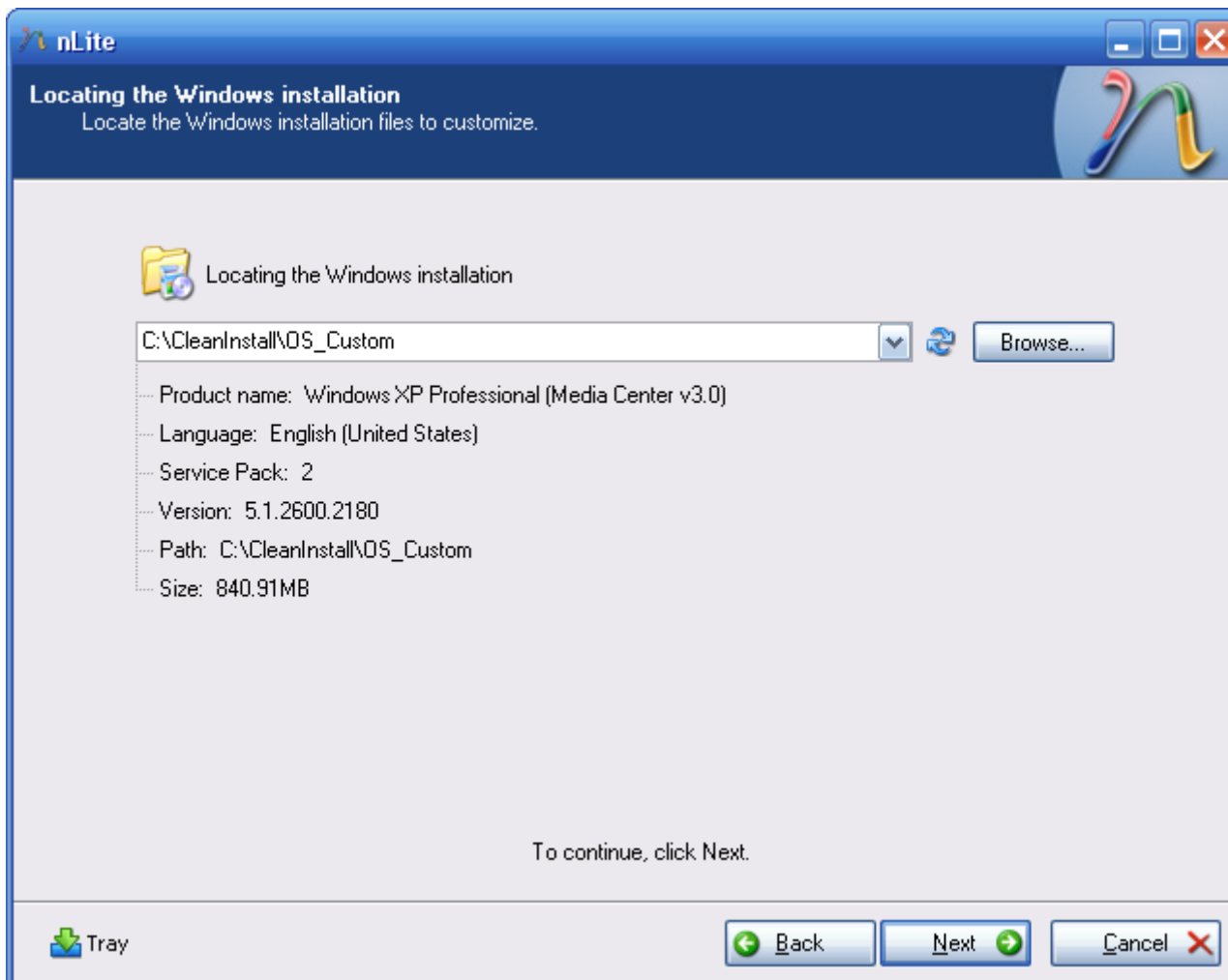
- Browse to C:\CleanInstall\OS_Default and click "OK".
- nLite will copy the contents of the CD to your hard drive.



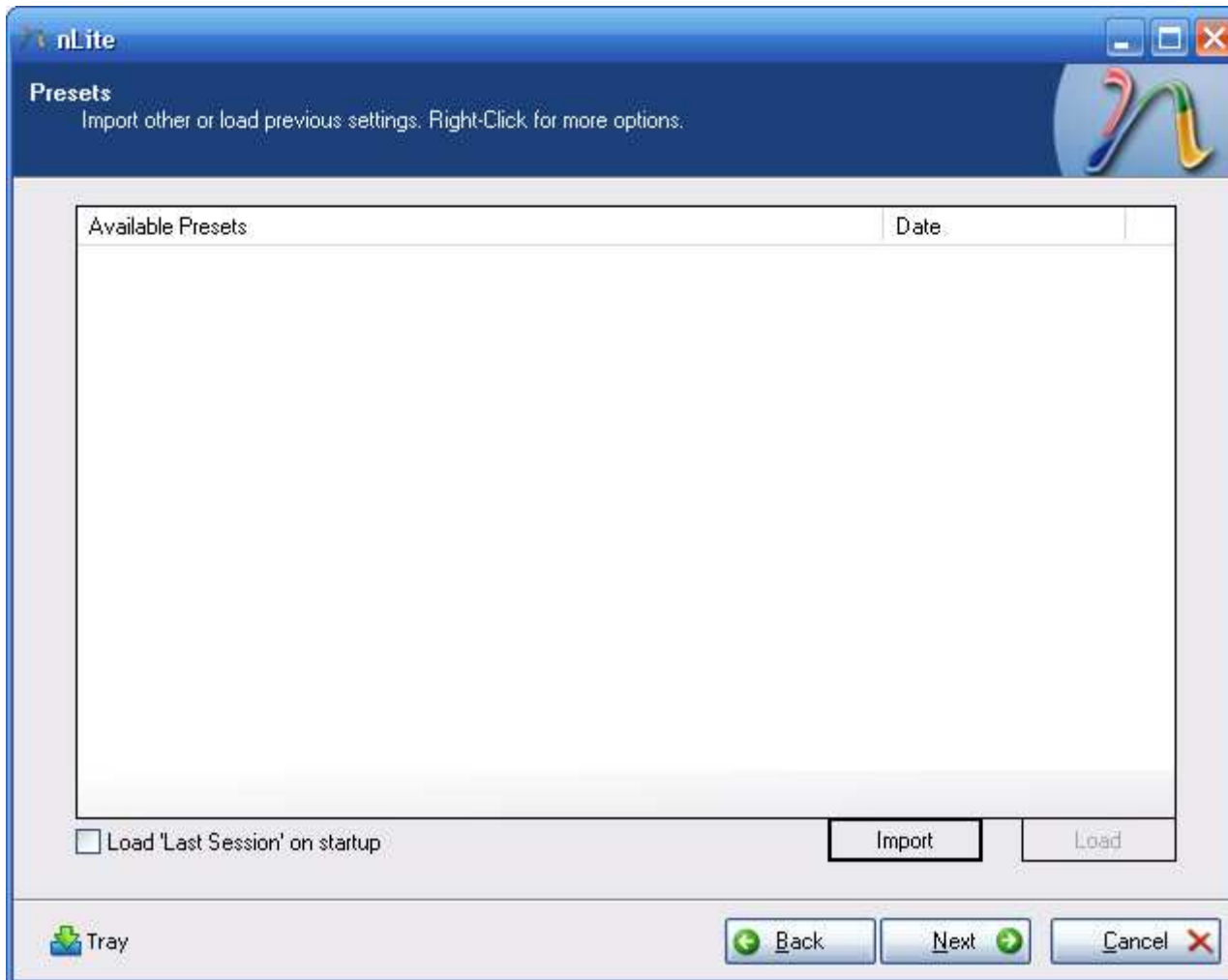
- nLite will ask to copy CD2 to the same location as CD1. Insert CD 2 and press “Yes”, then browse and select your DVD drive.
- nLite will copy the contents of CD2 to C:\CleanInstall\OS_Default.



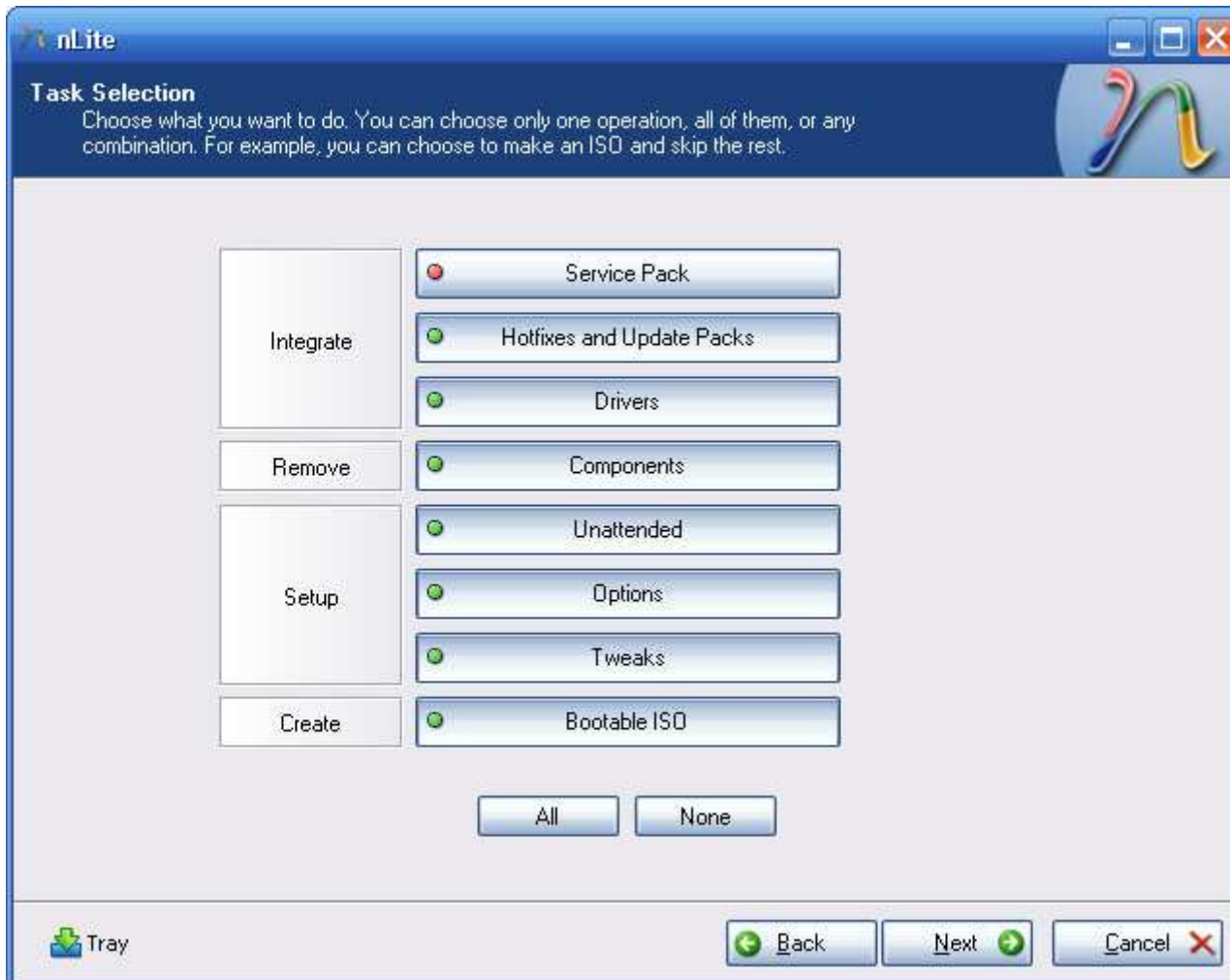
- Don't click "Next" yet. It has been my experience that you may want build your nLite modified operation system install image a few times before you get it right, so you want to be able to easily get back to this point.
- I recommend taking a backup of your C:\CleanInstall folder at this point, for example to an external hard drive or recordable DVD. At any later date you can then resume the clean install process from this point using your backup. Once you have this folder structure stored away somewhere, you can build the custom operating system install image on any PC with nLite installed.



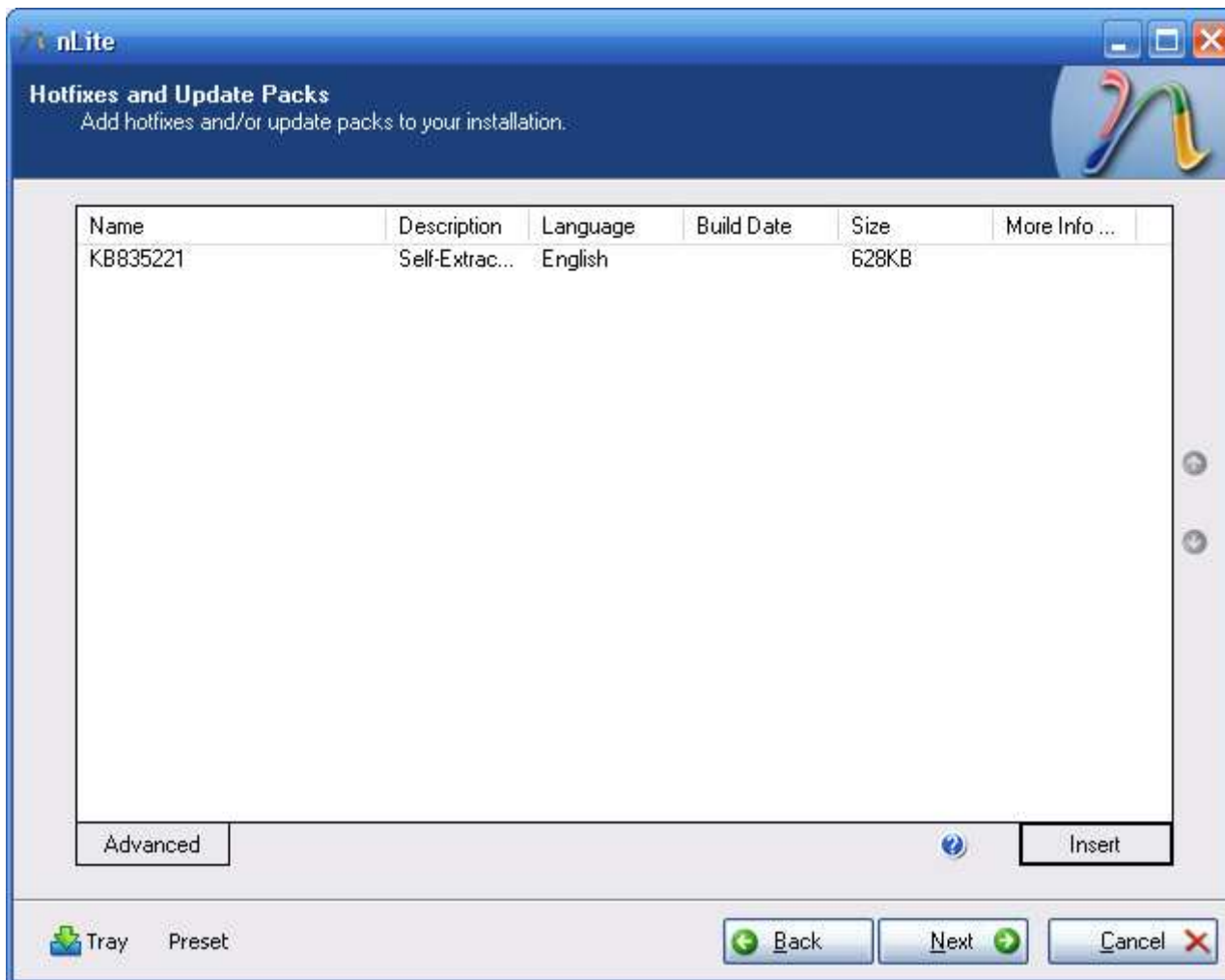
- Copy the contents of C:\CleanInstall\OS_Default to C:\CleanInstall\OS_Custom. This is so that you are modifying a copy of the OS rather than the original, and you can quickly start again if things go wrong.
- Click “Browse” and browse to C:\CleanInstall\OS_Custom.
- Click “Next”.



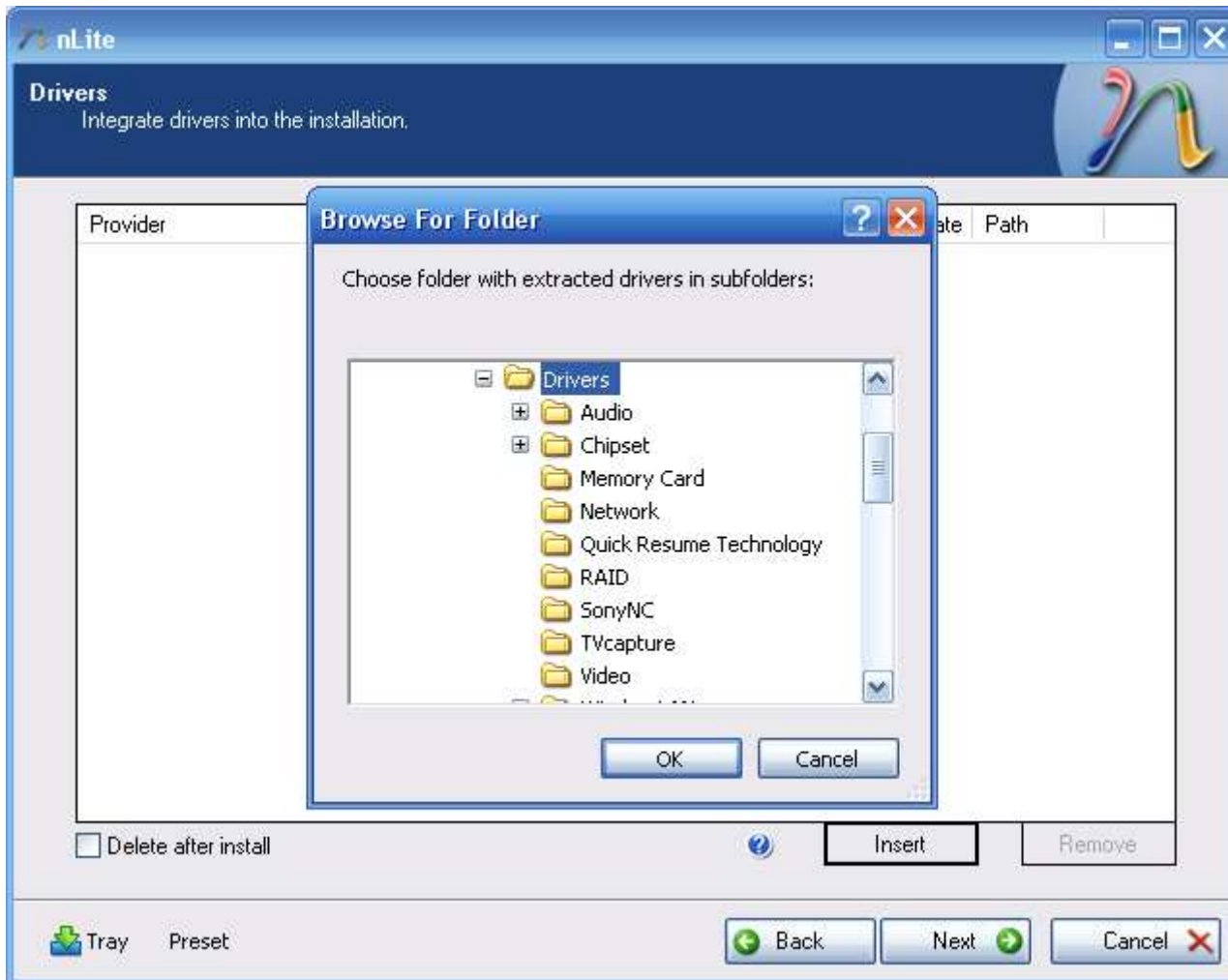
- If you have run nLite before and you are going back to tweak the image, settings you used on previous runs will be shown here. Select the occasion you want to use and press “Load”, or if you saved settings to a file, press “Import” to load the settings now.



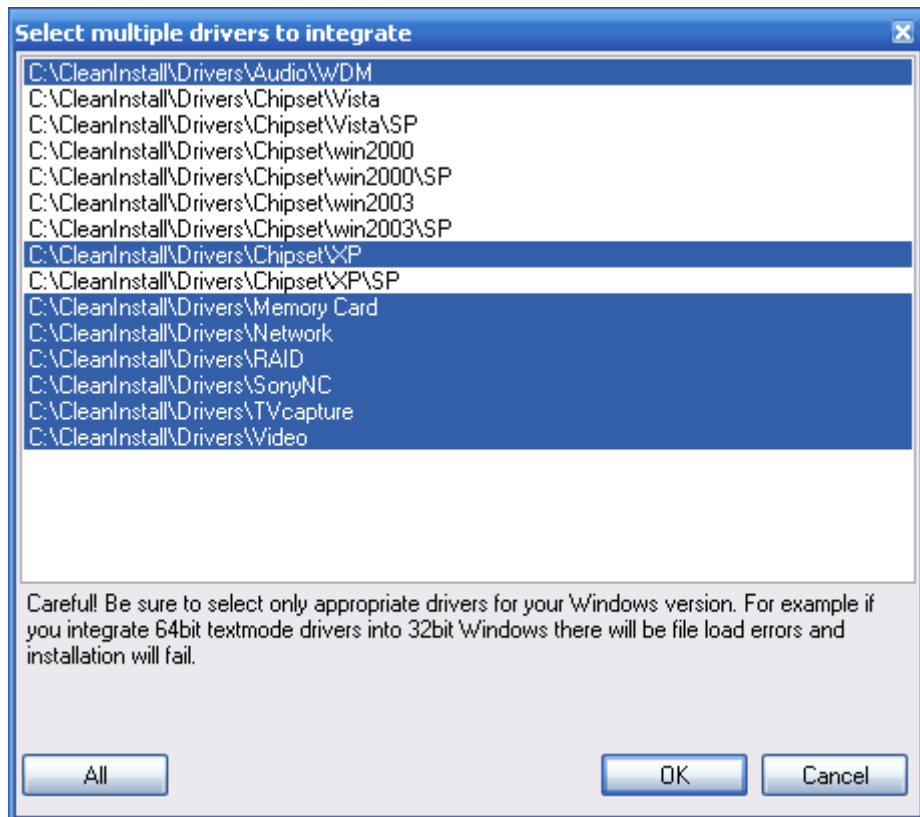
- This is where you select how much or how little customisation you want to do with your custom operating system image.
- “Hotfixes and Update Packs”, “Drivers” and “Bootable ISO” are required for the purposes of this guide, but I recommend selecting all the options I have selected in this screenshot.



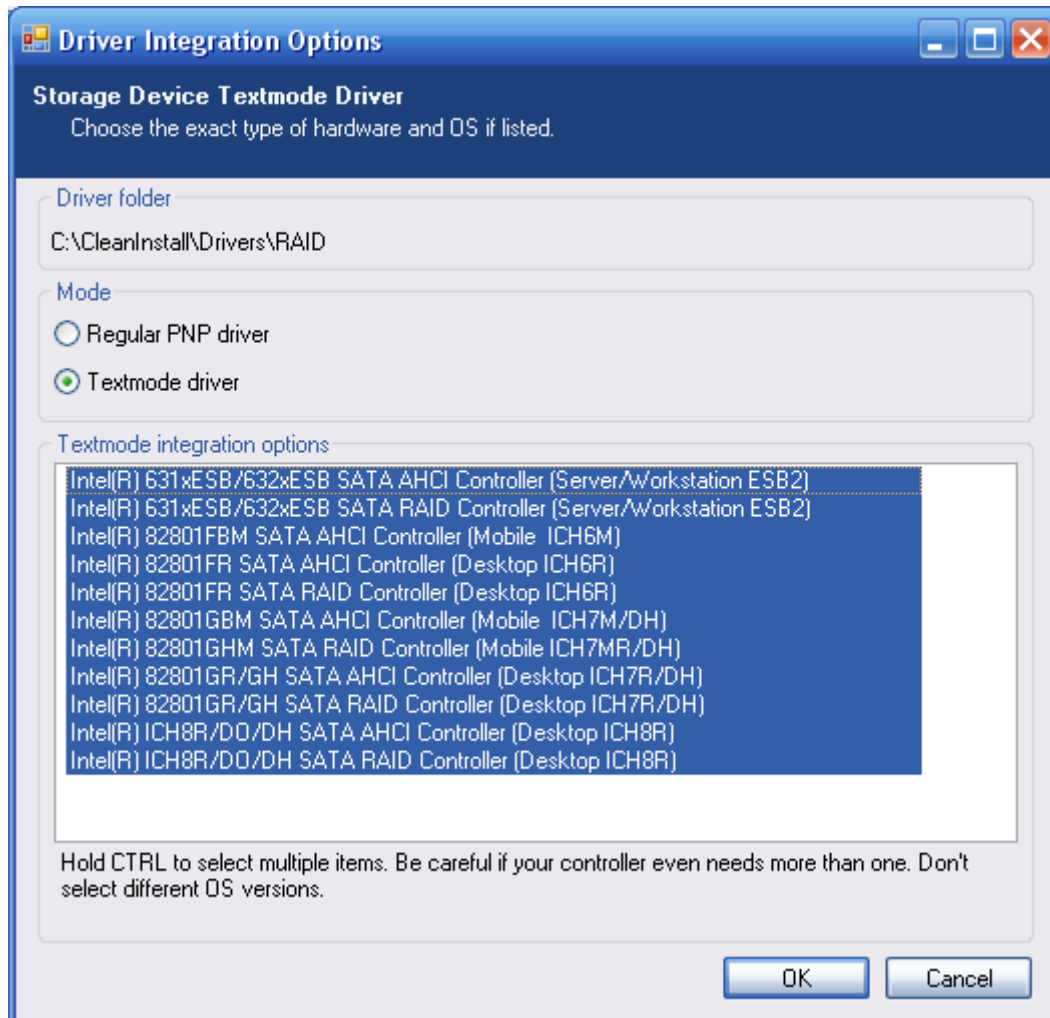
- This is where you can embed Microsoft hotfixes into the installation. In theory, you should be able to embed all of the hotfixes provided by Sony. I haven't tried this however, because prefer to run Windows Update after installation and get the most current hotfixes that way.
- The one hotfix you do need to include is KB835211.exe (<http://support.microsoft.com/kb/835221>). This is the Universal Audio Architecture system for HD (5.1) audio from Microsoft. Do not confuse this with KB888111.exe (<http://support.microsoft.com/kb/888111>) which is very similar but doesn't actually work with my Sony PC.



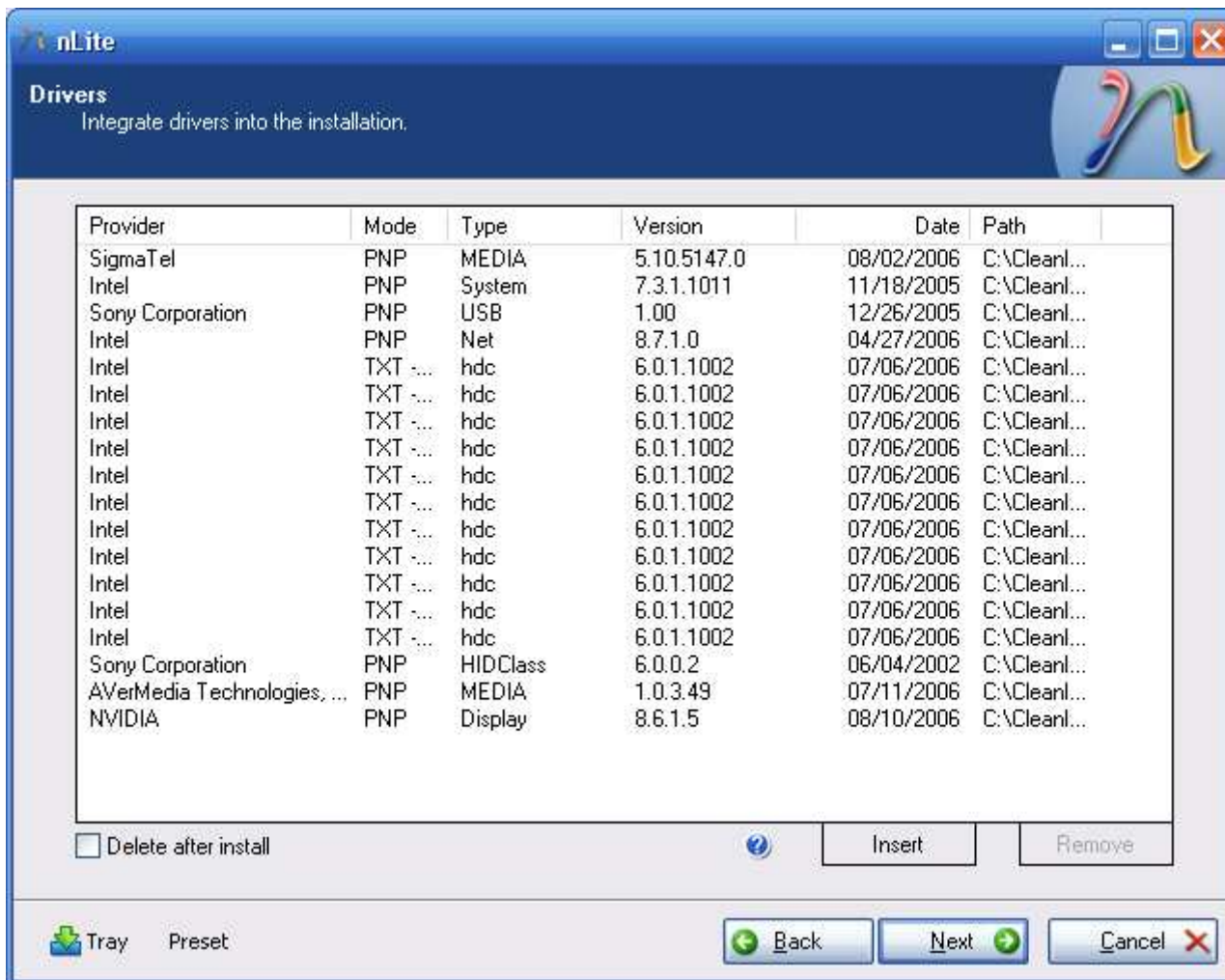
- This is where you embed device drivers into the installation.
- Click "Insert" and select "Multiple Driver Folder". Browse to C:\CleanInstall\Drivers and click "OK".



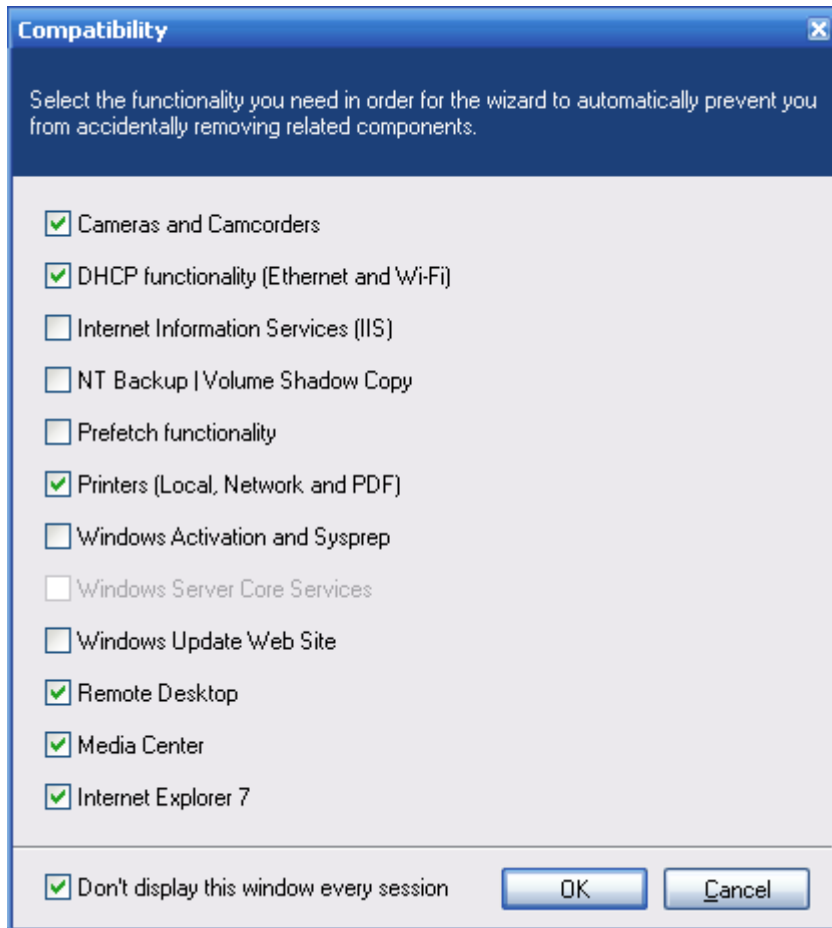
- nLite will scan the folder you selected for drivers which it can use in the image. It won't be able to use all of them because some of the drivers provided are in the format of a setup executable rather than an unpackaged INF driver (for the VGX-XL201 this includes TV Capture, Wireless LAN and Intel Quick Resume). Still, it's a good head start and leaves you with less to do after Windows is installed.
- The one which is critical to this process is the RAID driver (all others can be loaded after install). This is because the Windows XP setup routine does not understand SATA disks configured in a RAID array, which is the standard for Viiv-enabled motherboards such as the one in this PC. In a development blunder that beggars belief, the setup routine demands that the RAID driver is on a floppy disk (from an IDE floppy drive), when almost no PCs still ship with floppy drives today. The alternative is what we are doing here; embedding the RAID driver in the install CD. If you don't do this, you will get a blue screen of death (BSOD) early on in the install.



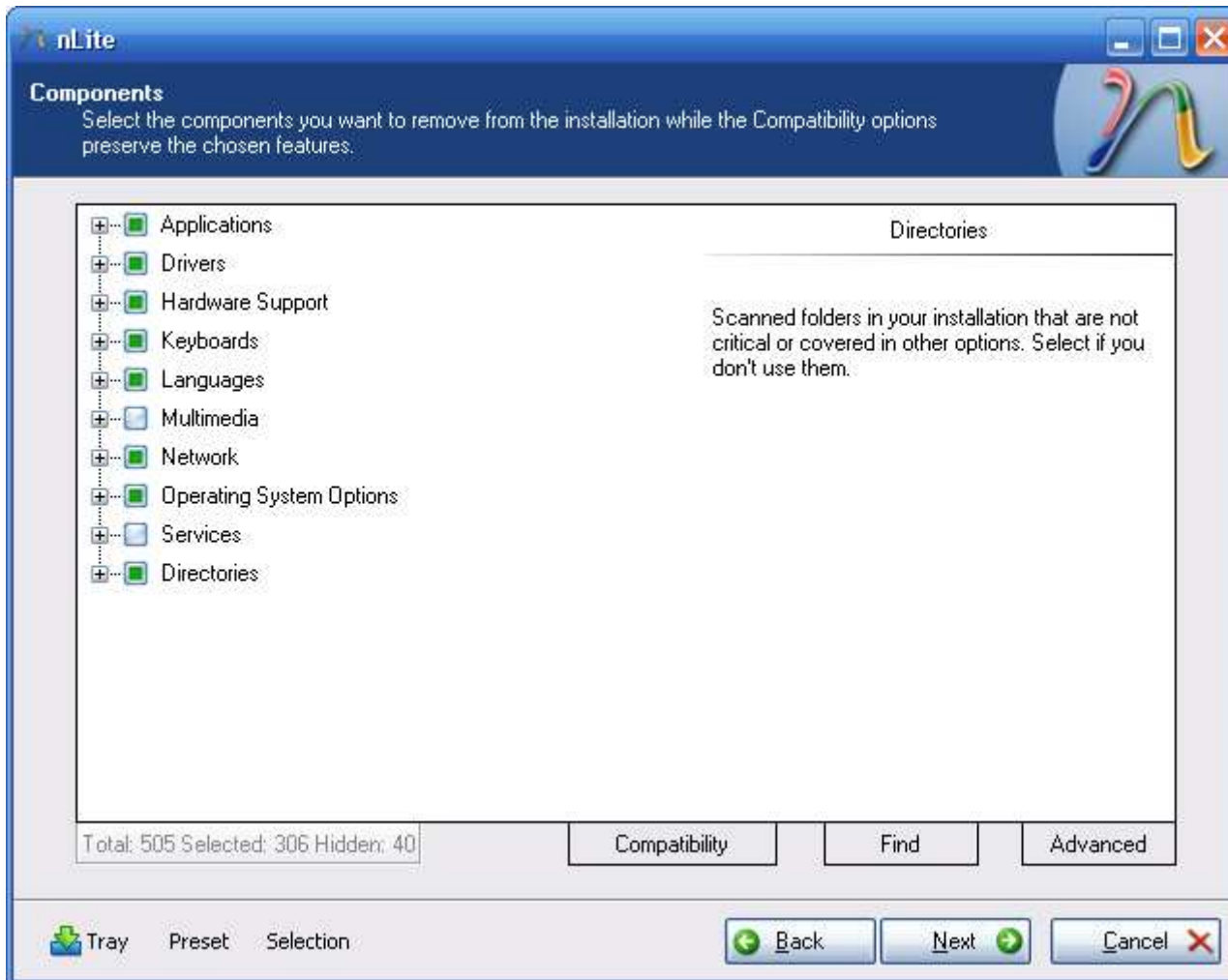
- I don't know which of these RAID drivers you actually need, but selecting all of them does no harm so I recommend doing that. Select all the drivers and click "OK".



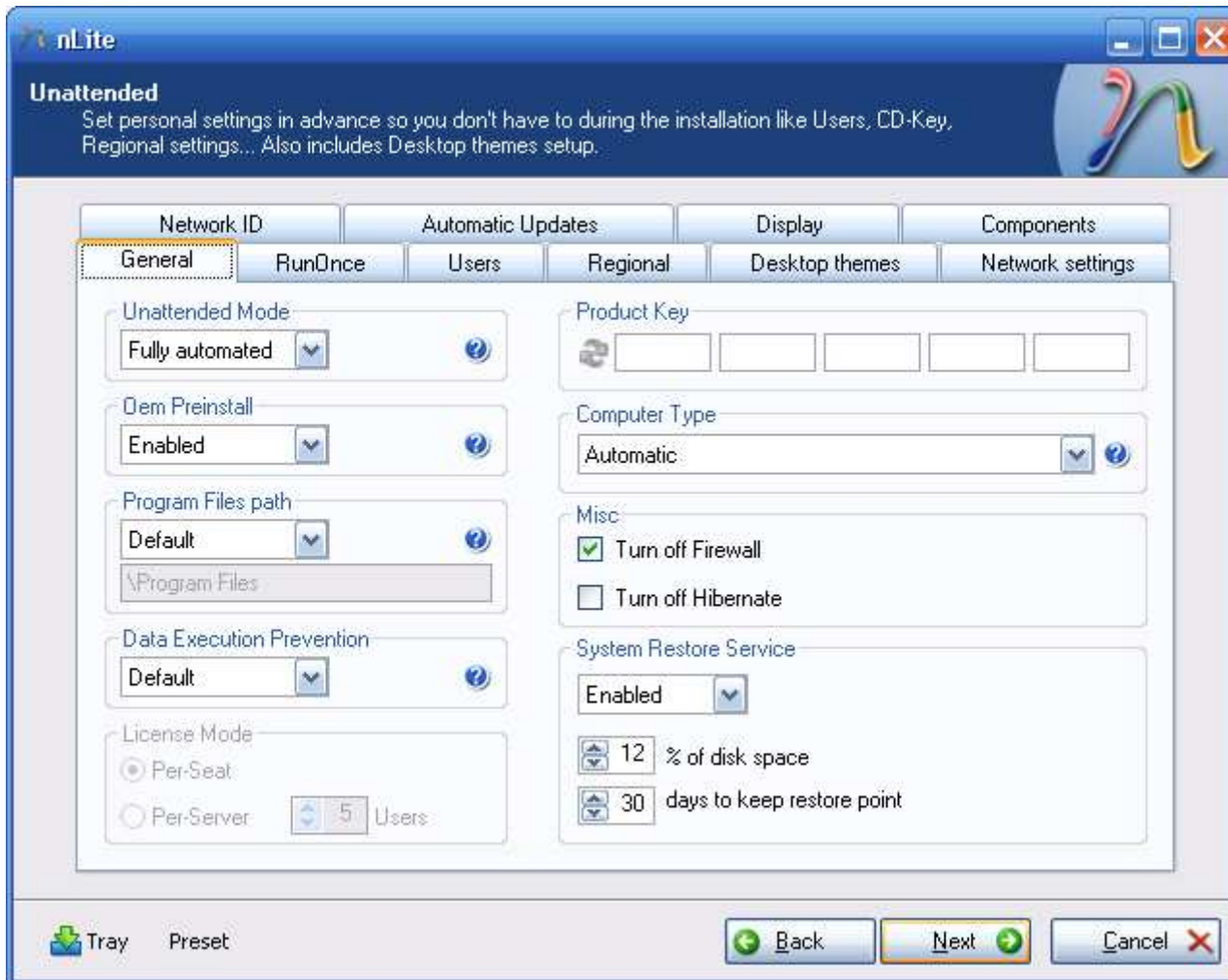
- Once you have selected all the drivers, you should see something like this.



- In order to prevent you from removing stuff you actually want on the next page, this compatibility list lets you choose what functionality you actually need from Windows. Just select everything you might possibly want to use in Windows.

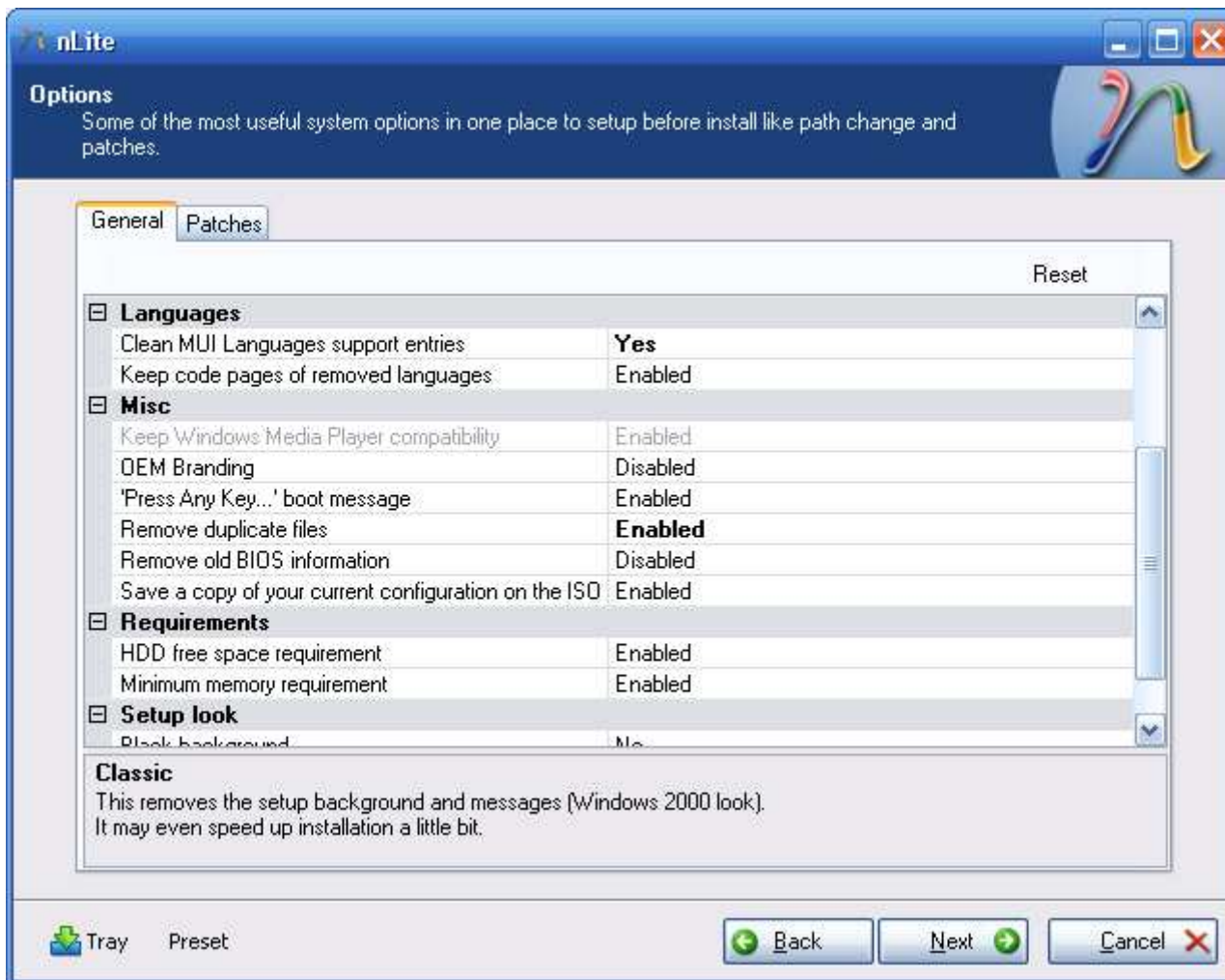


- None of this is required for the purposes of this guide, but it's cool to be able to knock out things from the installation you don't want. Also, if you knock out enough components, your final image will fit on a CD rather than a DVD. I select lots of things in this list, including all languages and keyboard layouts other than the ones I use.
- Be careful not to take out things you might want later because I don't know how (if it's even possible) you might be able to get them back later.

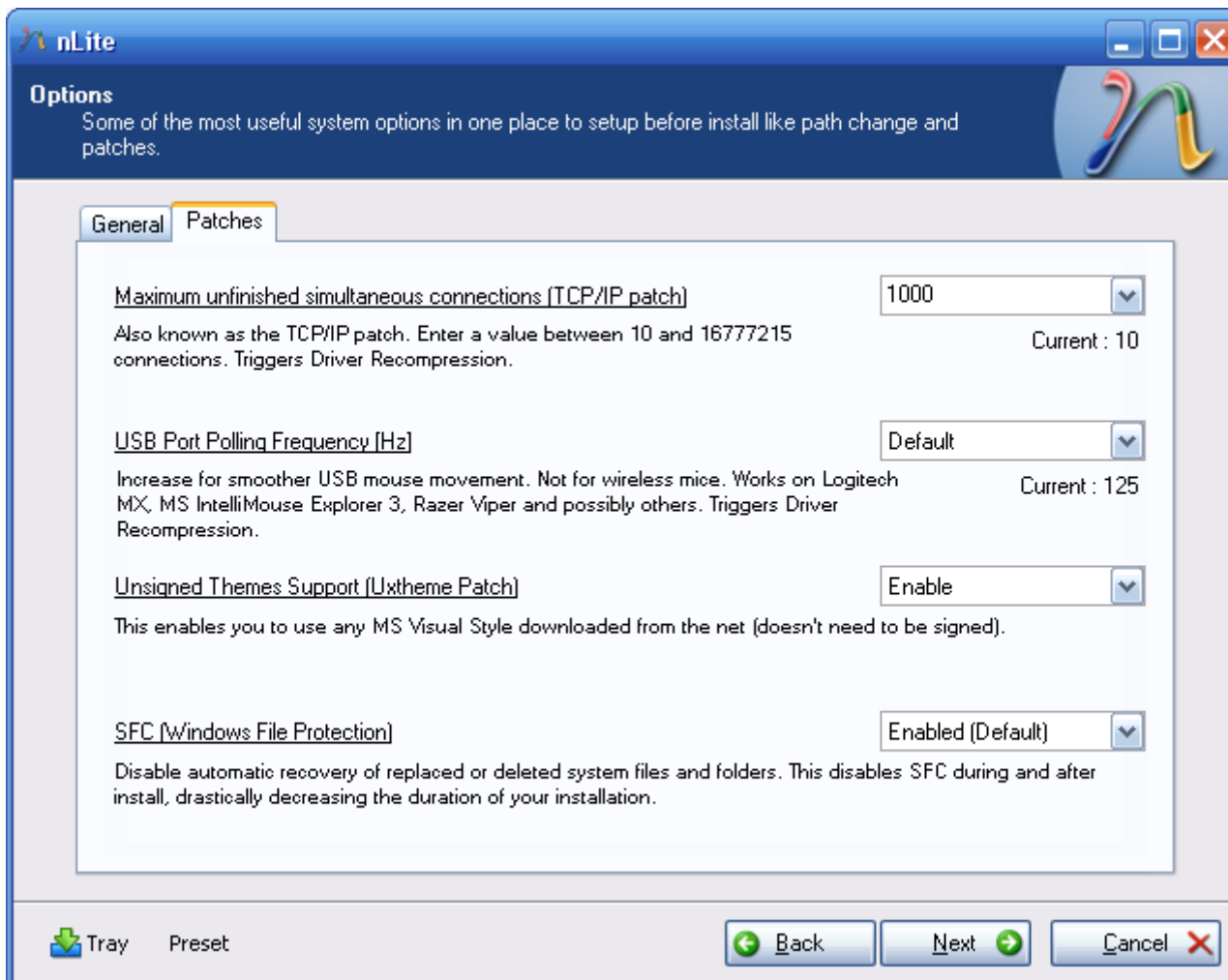


- Change as many or as few of these options as you like. The only one you need to enter is your product key. This can be found on the sticker on the back of your PC.
- Suggestion:
Set “Unattended Mode” to “Fully automated”. Under the Users tab, set an “Organization” and the “Full Name” of the Administrator account. If you want to set account passwords, keep them to 14 characters or less (otherwise you get a warning during installation). Give the PC a name under the Network ID tab, and that should be enough to ensure an interaction-free unattended install.

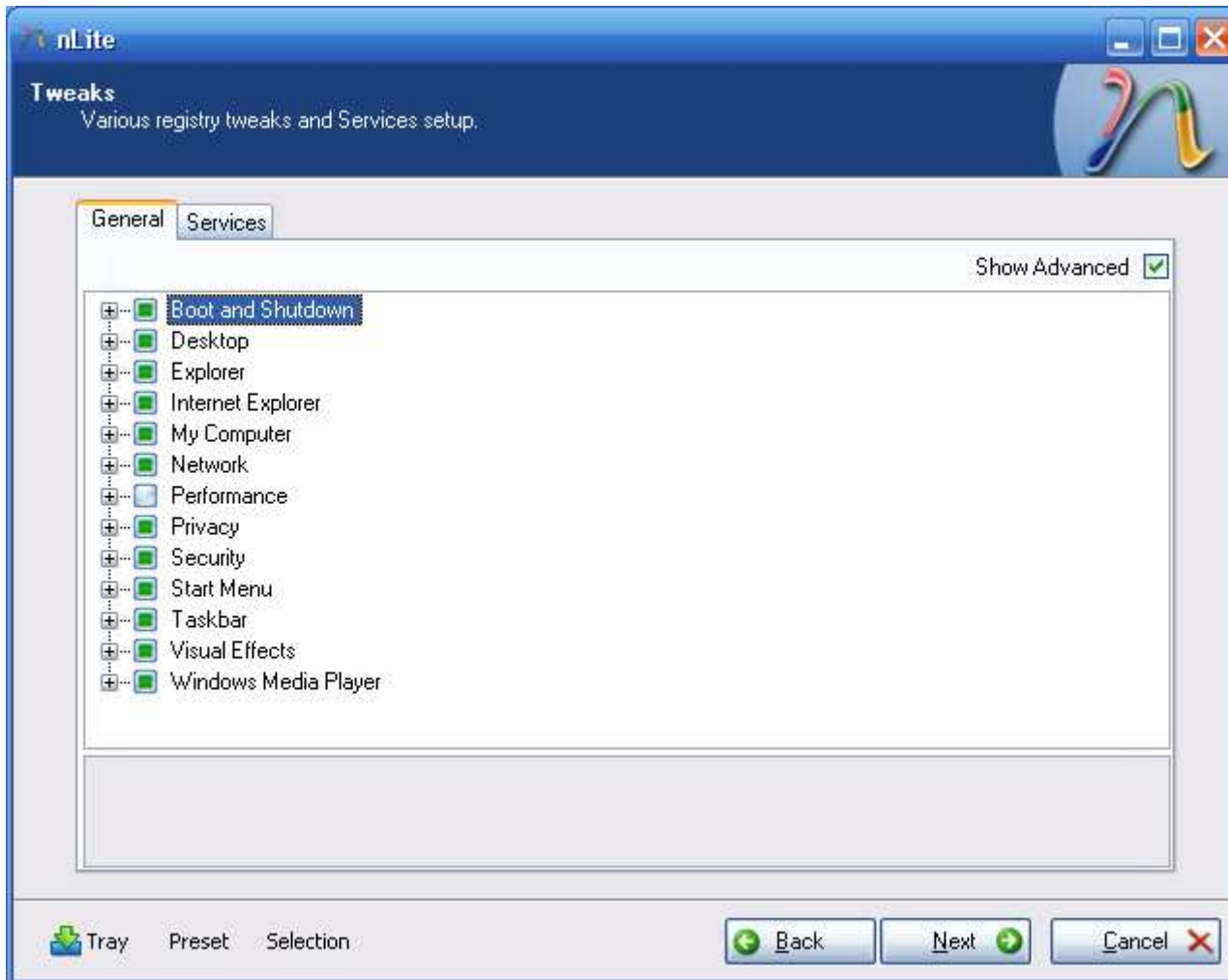
Suggestion: If using an LCT TV as your display (and possibly other circumstances), set a sensible screen resolution under the Display tab. Otherwise Windows will start at 640x480 and it will be difficult to adjust because the buttons will be off the screen.



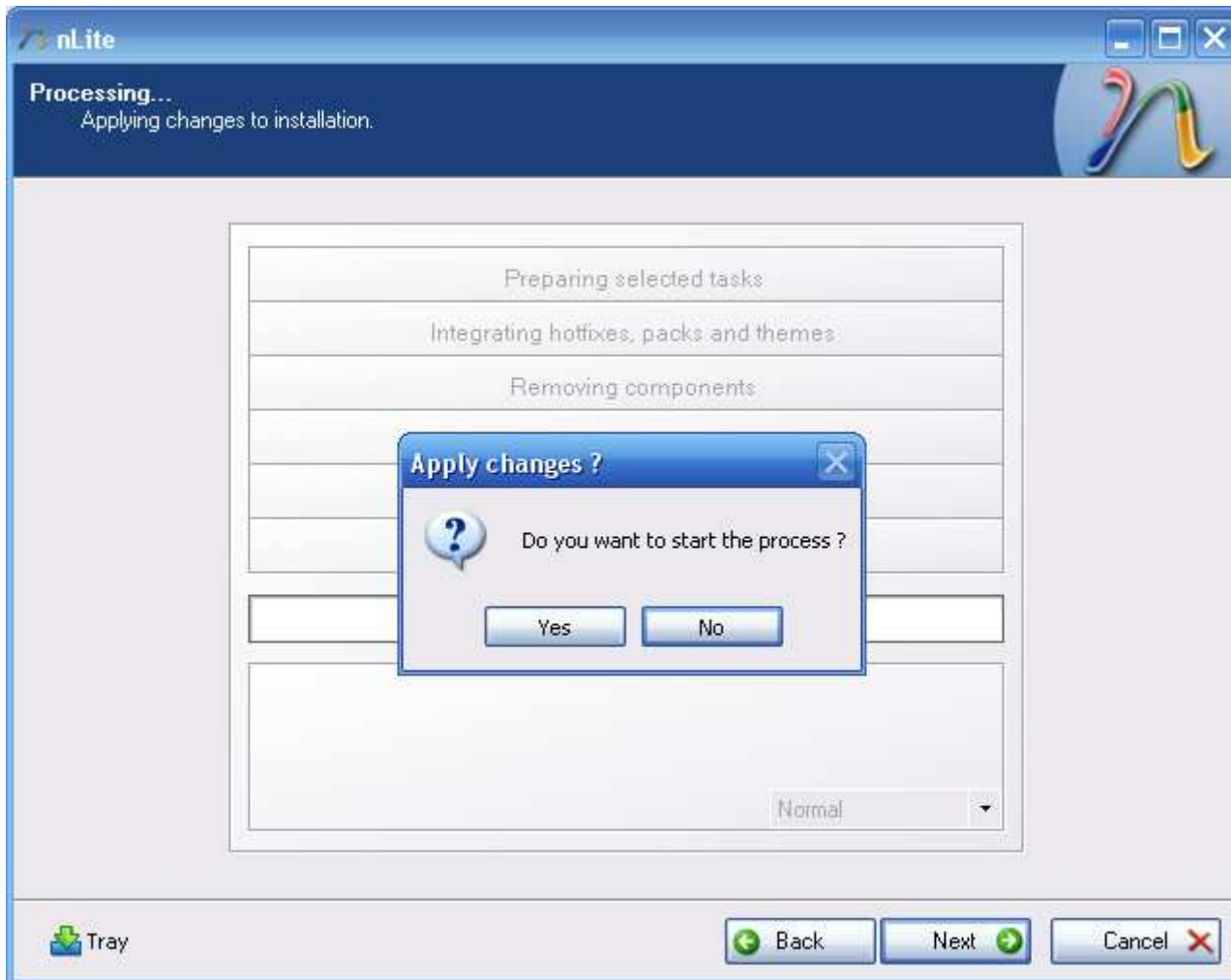
- Again, this page has no impact for the purposes of this guide. Change the options as you see fit.



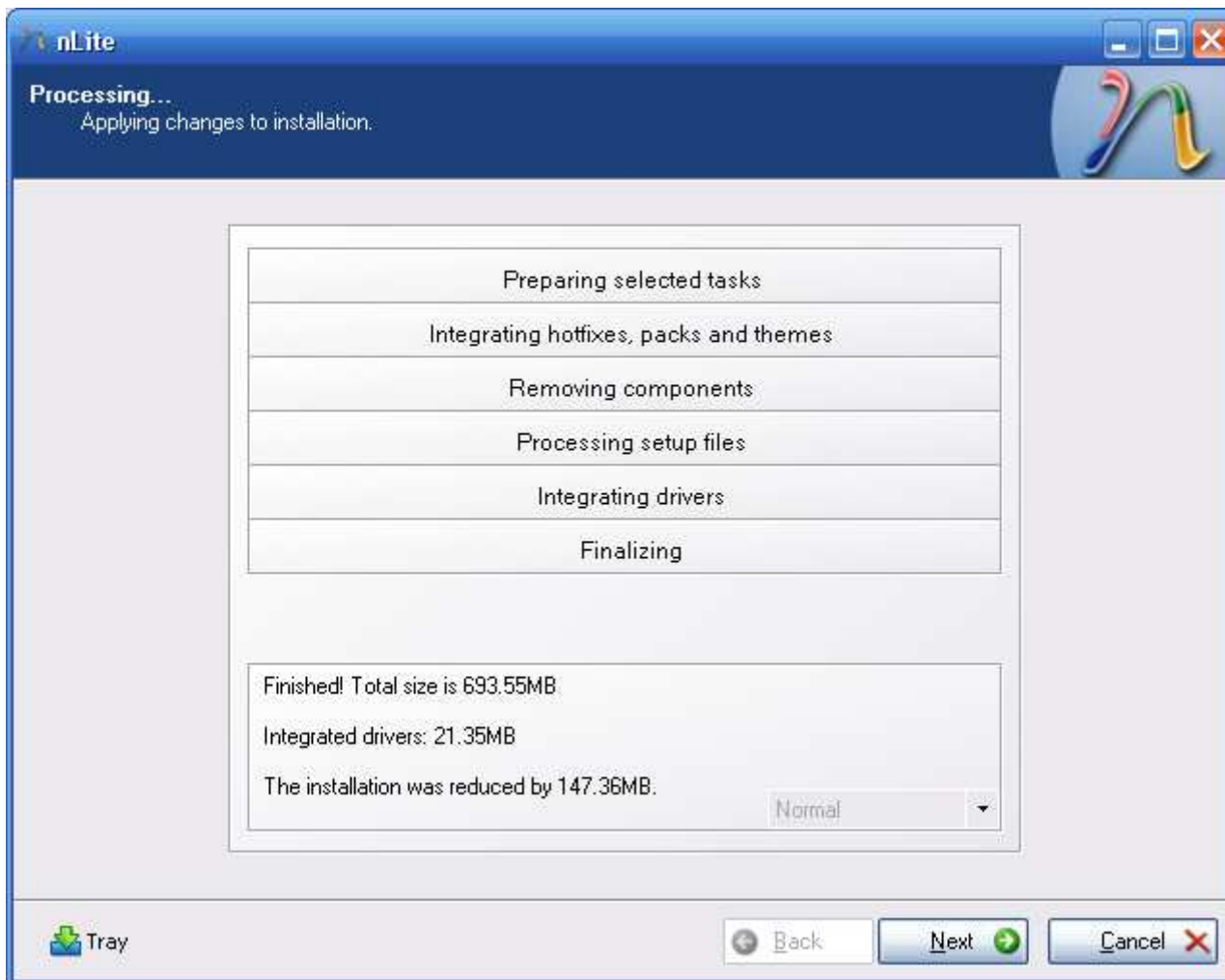
- The patches tab also has no relevance to this guide, but I recommend the settings I have selected here.
- The “Maximum unfinished simultaneous connections” option has to do with a security fix Microsoft put in place that limits unfinished TCP/IP connections to 10. It can however negatively affect P2P file sharing performance.
- The “Unsigned Themes Support” option patches a file that should never have needed patching in the first place. Microsoft implemented a powerful theming engine in Windows XP and then released a whopping 2 themes to date and locked everybody else out. This patch allows user-created themes to be used.



- I love this tab. Again, nothing to do with this process, change all or none of these features and it'll make no difference to the process. What this tab does though, is allow you to change hundreds of settings that you probably go through manually after you've installed Windows. It won't do every last thing you want to change but they haven't missed much.
- You can disable Windows services on the Services tab, but I usually leave this one alone.



- You're ready to kick off the process of actually changing the installation CD contents. Press "Yes".
-



- The process is complete (nearly). We still need to embed the files we copied from the C: drive.
- Copy the contents of C:\CleanInstall\I386 to C:\CleanInstall\OS_Custom\I386, replacing any files that already exist.
- If you have gone over the 700MB limit for CDs, I strongly recommend copying the following folders to C:\CleanInstall\OS_Custom :

C:\CleanInstall\Drivers

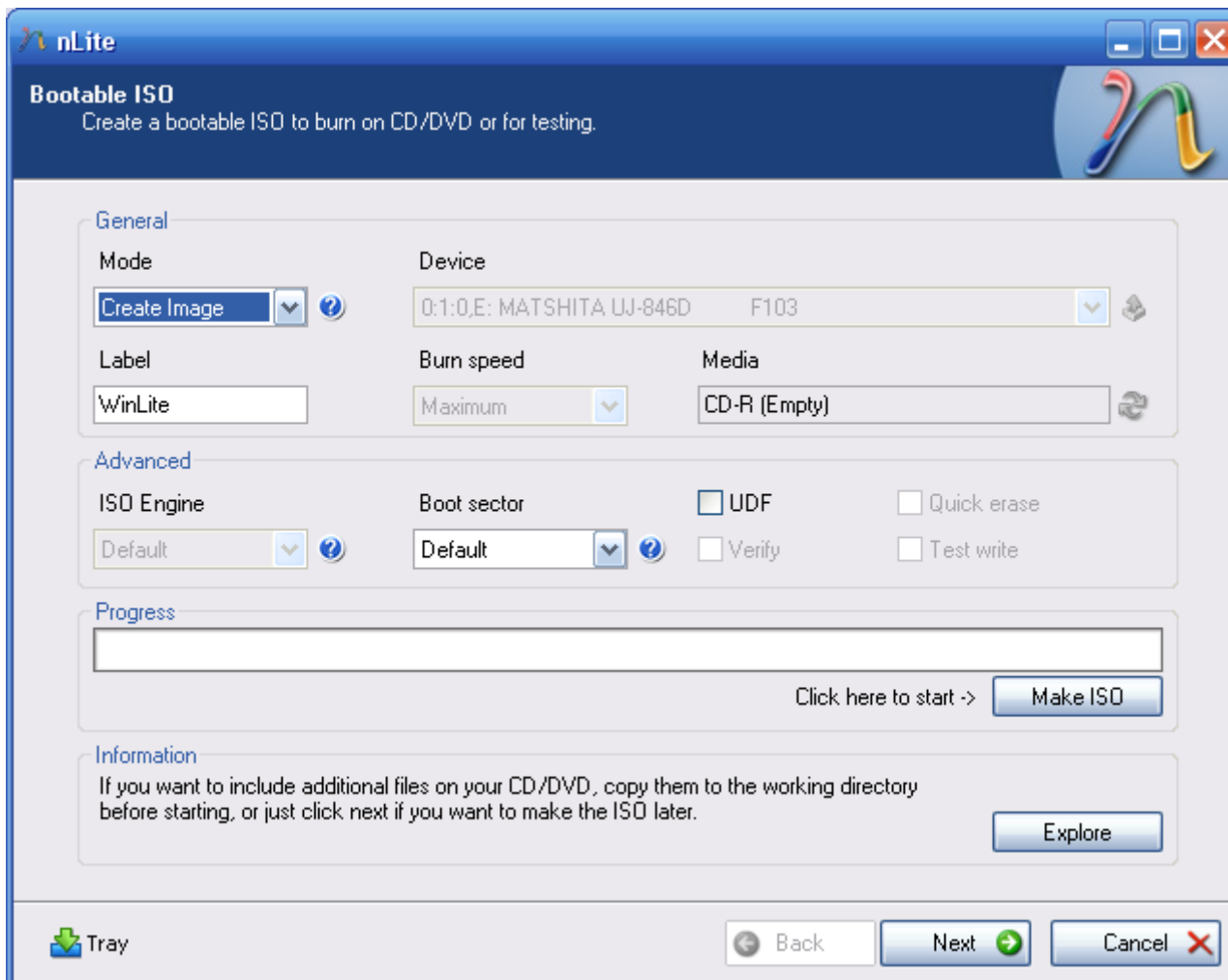
C:\CleanInstall\Hotfix

C:\CleanInstall\I386 (to a folder other than the existing I386 folder)

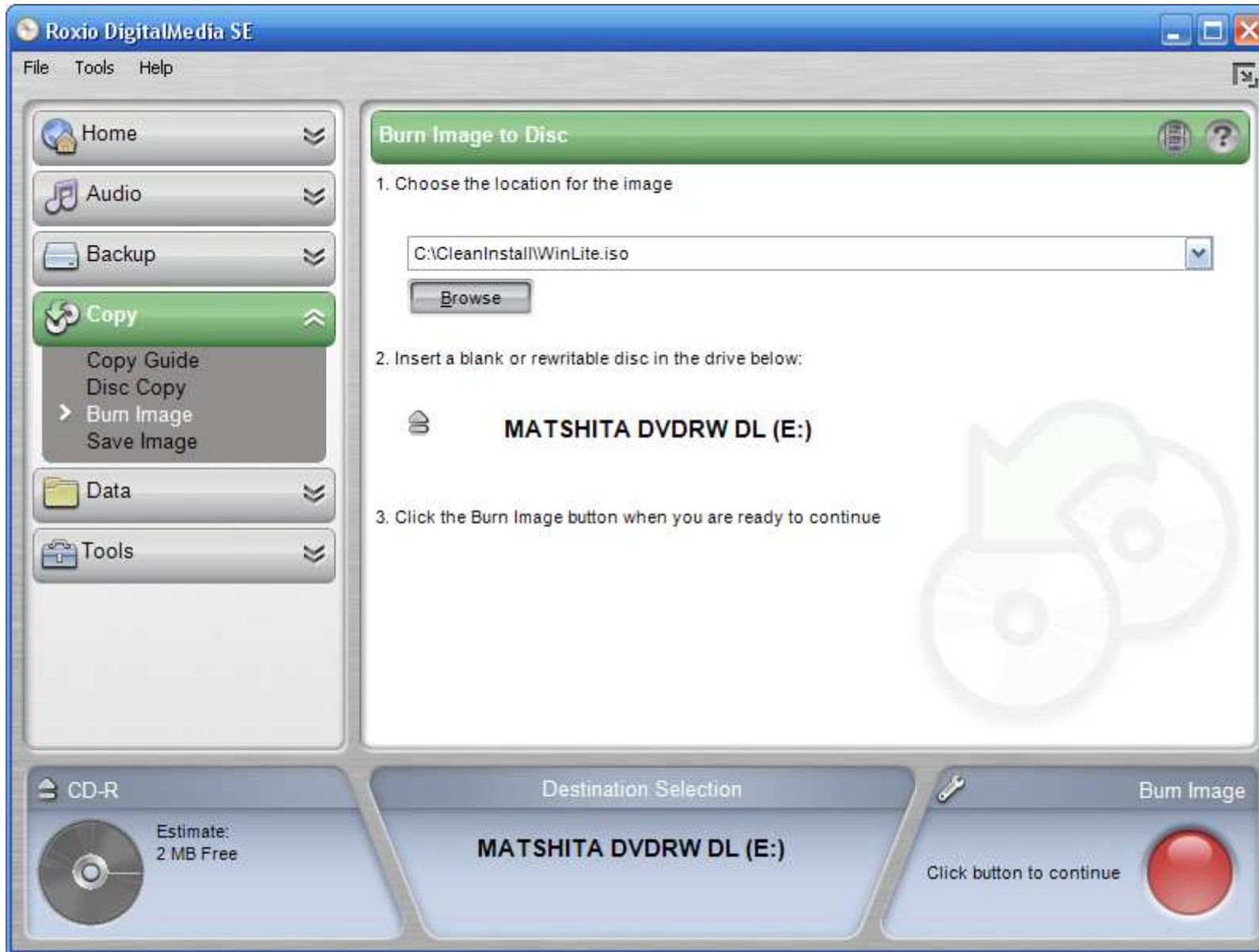
C:\CleanInstall\SonyUtilities

This will make life easier when you need to access these files again later.

- Press "Next".



- I suggest burning the installer to an ISO image. That way you can copy it, back it up and easily recreate it if the disc gets lost or damaged. Choose settings as shown in this screenshot and press “Make ISO”.
- Save the ISO to wherever you like. I saved mine to C:\CleanInstall\WinLite.iso.
- You’re done with nLite.



- Use your preferred tool to burn the image to a DVD (or a CD if you've managed to hack out enough from the installation that the ISO is under 700MB).
- I used Roxio DigitalMedia SE which is preinstalled on the PC. It's not a very full-featured burner but it's good enough for this job.

Installing the Custom Operating System Install Image

OK, by this point you should have an operating system disc completely customised to your requirements with your Windows product key, device drivers and any other customisations you saw fit to make. The annoying thing is that if this disc doesn't work for you, depending on how far you get in the installation before it fails, you may have to reset back to the factory image using the System Recovery DVD in order to tweak the image again (unless you have another computer on which you can tweak the image, and you had the good sense to follow my instructions and back up the CleanInstall folder).

I strongly recommend having nothing on your D: drive (or any other partitions you have made on the internal HDD) that you aren't prepared to lose. You may decide you want to reformat and repartition the whole disc as part of the install process which will mean you will lose any data stored on it.

Insert your new disc, which I will now refer to as the "Custom Recovery Disc", and restart your computer.

Follow the normal procedure for installing Windows from an original CD. Press any key when instructed to boot from the CD, and let it load the drivers it needs. You don't need to press F6 to load a RAID driver because it will already be embedded on the CD. If you get a blue screen of death (BSOD) after the initial bout of file copying, you may not have embedded the RAID drivers using nLite correctly.

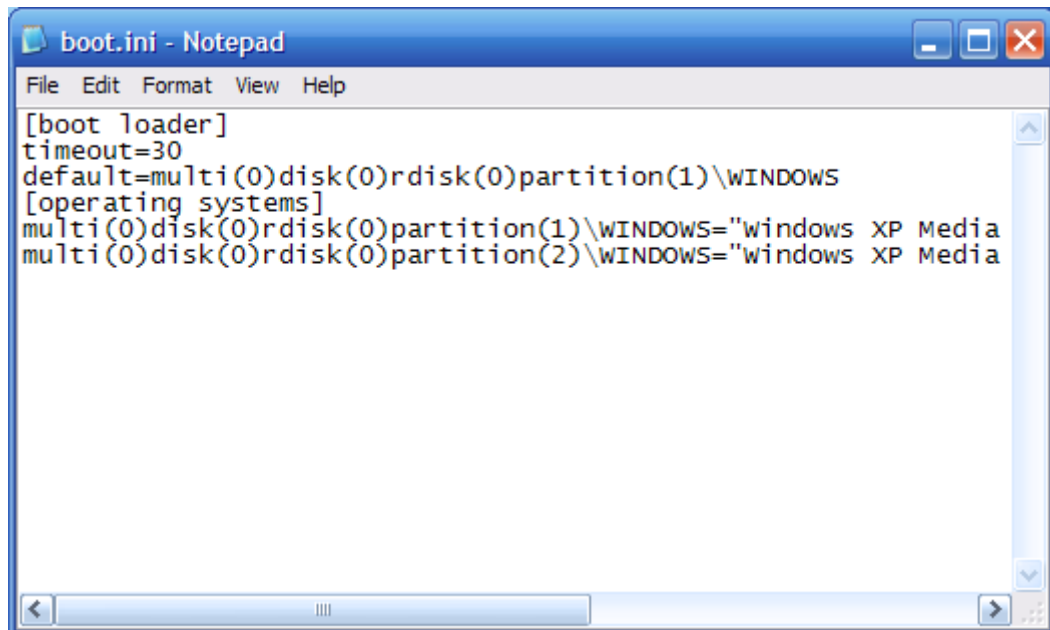
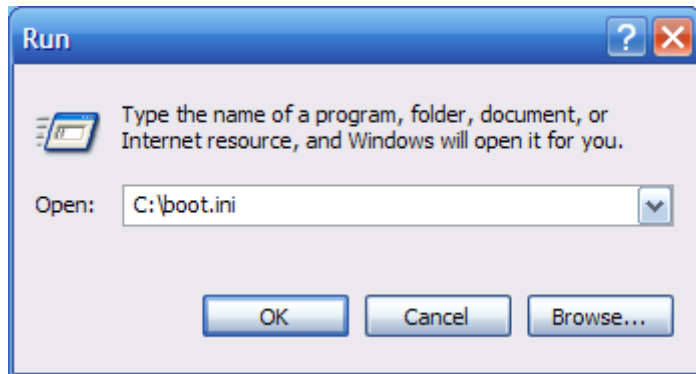
The first interaction you should have is deciding on which partition you want to install Windows. If working from a current position of the factory default image you will see three partitions; the hidden one at 8111MB, and the C: and D: drives. I recommend deleting all three and creating two new partitions, C: at 50,000MB with all the remaining space going to D:. Of course this is entirely up to you, it's just a suggestion. I always format a partition before installing Windows on it with a full NTFS format. Use a quick format if you're impatient but it only takes a few extra minutes to do it properly.

After the disk is formatted your computer will restart. If you used nLite to fully automate the installation, the next time you interact with your computer will be when it has finished installing and Windows has loaded.

During the installation on my PC (presumably after the graphics card driver is loaded) the screen resolution is increased to 720p and the Windows installer routine which is fixed at 640x480 resolution moves to the top left corner, taking up only half of the screen (the rest of the screen is a nice shade of blue). This is normal, although if you don't set a screen resolution under the "Unattended" section of nLite (on the Display tab), once Windows boots it will be back to 640x480.

The installation takes about 40 minutes after formatting the C: drive.

Post-Installation Cleanup



- For some reason unknown to me, as I ran through the installation, this worked example Windows created two entries in boot.ini instead of one. This has the annoying effect of making you wait 30 seconds or press any key during start up. I don't know why it did this, but it's easy to correct.
- Press "Start" > "Run" and type "C:\boot.ini" and press "OK" as shown on the left.
- Delete the last line (starting "multi(0)disk(0)rdisk(0)partition(2)") and save the file. Next time you boot, the problem will be gone.

You may want to format your D: drive now if you didn't do so already during the installation process.

At this point I like to reassign my drive letters, because Windows will almost certainly have put removable drives before the DVD drive which is one of my pet hates. Do this using Disk Manager which can be accessed by selecting "Manage" after right clicking on "My Computer".

Now you're going to want to install whatever drivers are remaining to be installed. If you have followed this guide to the letter there won't be many to do. Insert your System Recovery CD (or take the files from the Custom Recovery CD if you copied the files onto it) and run the following installers (I suggest using the order specified here, but I don't think it's all that important):

[System Recovery DVD]

\VAIO Applications

\Drivers

\Quick Resume Technology\el_all.exe

\TVcapture\InstallDriver.exe

\WirelessLAN\iProInst.exe

- For the Intel PROSet/Wireless driver installation, I choose "Custom" install and deselect the second option "Intel® PROSet/Wireless". This is wireless application software which is redundant if on Windows XP-based systems which have very good wireless software.

Depending on what you took out of the Windows install CD during customisation in nLite, you might see a message telling you that some Windows files have been replaced by unrecognised versions during installation of drivers, and you will be asked for the Windows CD. If this happens, provide the Windows XP Media Center Edition 2005 CD1 disc and everything should be fine. If you don't take out certain Windows components during nLite customisation, this doesn't happen and I haven't yet tracked down which components I took out that caused this issue.

Software Installation

Now you should be at the stage where you have a working, clean installation of Windows, but you're not finished yet. There is at least some software which Sony provide that is useful or even necessary.

At this point I like to join my wireless network activate my copy of Windows (it's probably nagged you to do this a couple of times by now already). Then I do a Windows Update as many times as required until no updates are left. You may find that during your first Windows Update, a number of keyboard and mouse related hardware devices are discovered and will need to be installed. The drivers should be found automatically or if not, they will be on the Window XP Media Center Edition 2005 CD1 disc. I don't know why these devices are found since the keyboard works straight off, but I let the installation continue anyway.

Now you will want to consider installing a few of the utilities provided by Sony. The utilities can be found at [System Recovery DVD]\VAIO Applications\Applications. It's up to you what you choose to install (hence the whole point of doing a clean install) but here are my comments regarding each item in this folder:

AverMedia MPEG Encoder	This encoder relates to your TV capture card. I'm not entirely sure what it's used for – perhaps recording live TV. I install it every time.
SonyUtils DLL	Information about this one online is sketchy, but it seems to have something to do with special keys on the keyboard (like "Fn" keys), and possibly interaction with the DVD drive's eject button (without it, the eject button doesn't seem to work once you're in Windows). I recommend installing this one.
Sony Shared Library	Install this after SonyUtils DLL. It is a prerequisite for other Sony utilities including VAIO Hardware Diagnostics and VAIO Event Service.
Intel Matrix Storage	This article: http://www.intel.com/design/chipsets/matrixstorage_sb.htm from Intel explains what this software is all about. From what I can gather it has to do with managing your RAID array and gives improvements in data security, and hard disk performance. With things like this, I figure why not? I installed it.

Intel Viiv Software	You'll probably find you actually can't install this one until after you run Windows Update. It comes up with an error during installation which is fixed by a hotfix although I don't know which one. Intel Viiv software lets you create a Media network for sharing content with other devices on your network, including DRMed content downloaded from a growing number of online vendors. I install this one as well, although I don't have any content yet which requires Viiv.
Sony MP4 Shared Library	The first one I don't bother with. It's probably used by a bunch of Sony applications that I don't install, and certainly isn't needed for playing MP4 files generally if you install a codec pack (more on codec packs later).
Sony Video Shared Library	Same as above.
VAIO Control Center	This application is a joke. It's a wrapper that provides access to about a dozen control panel applets. It's completely pointless.
VAIO Event Service	From what I've read, this seems to have something to do with special keys (like "Fn" keys) on the keyboard. I always install it.
Wireless Switch Setting Utility	This lets you switch from a 2.5GHz band wireless network to a 5.0GHz band wireless network, and turn on the Bluetooth device which Sony reliably inform me doesn't actually exist on this model. If you don't have a 5.0GHz wireless network, this utility will do nothing for you.
VAIO Action Setup	This is a little utility which allows you to configure what the silver buttons on your keyboard do. I don't use those buttons anyway so I don't bother installing this one.
VAIO Hardware Diagnostics	I always install this. You never know when you might need it if you start having hardware problems.

At this point, after a few tweaks here and there to Windows so I have it just the way I want it, I install a copy of Norton Ghost 2003 which came with my old laptop, and I take a snapshot of the C: drive to a .GHO file. That way, I never have to go through this process again – I can always get back to a clean image of Windows Media Center Edition 2005, with drivers and Windows Updates and Windows settings tweaks already done. If you take the image any further on than this, you're likely to have a bunch of software on installed that will be out of date next time you want to reinstall your operating system. Of course this is an optional step and you need Norton Ghost or an

equivalent product to do it, but it saves you several steps in the reinstall process and is a nice clean way of getting back to a fresh newly installed operating system (assuming there are no significant hardware changes in between reinstalls).

Now you need to consider what software applications are missing from your installation that you need. Most of the applications which come pre-installed are on the Application Recovery CD. Some of them however, are not. I am pretty sure the following are part of the factory image and not on the Application Recovery CD:

- Norton Antivirus (90 day trial)
- WinDVD (old version)
- Google Earth (old version and free anyway)
- A James Bond game of some kind
- Google's Picasa (free)
- Google Desktop Search Installer

There is nothing I can do about Norton Antivirus (it's only a 90 day trial anyway) – I'm opting to use the free 1 year licence for McAfee I got with Sky Broadband instead. I know of no other way to legally obtain WinDVD, but it's pretty easy to get the same functionality legally, and this is described in the next section.

Codecs and Video Playback

You'll find until you've installed WinDVD or equivalent, you can't complete Media Center setup. When you come to select the number of speakers you have it will probably tell you that "The video decoder has either malfunctioned or is not installed". It is not installed. You don't need to install a complete product like WinDVD or PowerDVD, but you do need some decoder software. I recommend downloading K-Lite Codec Pack (I download the "Full" version but there's a choice depending on how many codecs you want bundled with it) which gives you a choice of MPEG decoders. You can get it here: http://www.free-codecs.com/download/K_Lite_Codec_Pack.htm.

If you install K-Lite Codec Pack, you'll need to decide what to install for yourself out of the many options, but these are the options I choose:

Profile 4: Lots of stuff

...with the following amendments:

On the "Select Components" page, I use the following settings:

- Add Xvid DirectShow video filter
- Add InterVideo MPEG-1/MPEG-2 DirectShow video filter (this is the one that makes DVD playback and Media Center work)
- Change AC3/DTS/LPCM (DVD audio) DirectShow audio filter from AC3Filter to InterVideo
- Add MP1/MP2 (MPEG Audio) DirectShow audio filter and set it to MainConcept
- Add AAC DirectShow audio filter and set it to 3ivx Pro

On the "Select Additional Tasks" page, I use the following settings:

- Reset all settings to their defaults
- Make Media Player Classic the default for: Nothing (MPC might be a good, reliable, lightweight media player but it's just too ugly to be my preferred media player)
- Speaker setup: 5.1 (or higher)

I have found that if I choose slightly different settings, I end up with a jittery signal in Media Center on live TV, and sometimes no sound on live TV. I've also managed to break sound completely on my system once by messing about with different options in K-Lite Codec Pack and I couldn't recover from it, so you do need to select the right options. The above profile definitely seems to work – codecs are very much a dark art to me so once I have them working, I leave them the hell alone.

At this point you should be able to play a DVD in Media Center or Windows Media Player. It's using the decoder from WinDVD (InterVideo) but you haven't actually installed WinDVD. So far as I can tell from reading up on the Internet, what you've done is perfectly legal. Besides, you have a right to use WinDVD anyway – it came with your PC, Sony just decided not to let you get at it if you want to go the clean install route.

Application Recovery DVD

There is a veritable treasure trove of software on your Application Recovery DVD. Most of it you won't want – in fact, the only application on there that I want is Roxio DigitalMedia SE, and only that because I don't have any other software for burning CDs and DVDs nor do I have the desire to buy or steal any. I'll describe here how to extract the software from the DVD. Which bits you choose to install are entirely up to you, but I would suggest very little, if any of it. Most of it is out of date, poor quality or just plain useless.

You can't just pop the DVD in and install what you want, Sony has an all-or-nothing way of installing the DVD but that's it. However, there is a way around this problem. All the installers for the various applications Sony give you are on the CD, they're just zipped into cabinet files with the .pac extension. You can extract them, and to do this, you need to download a little command-line utility called KCAP.EXE. It can be found here: <http://www.myplc.com/sony/bin/kcap.zip> or here: http://www.math.utexas.edu/users/rogoyski/work/tr5ap_winxp/kcap.exe.

Incidentally, I found out about this utility through the following URLs: http://www.myplc.com/sony/sony_apps.htm and <http://www.club-vaio.sony-europe.com/clubvaio/mvnforum/viewthread?thread=37599>.

Temporarily place KCAP.EXE in the root of the C: drive for the sake of convenience. The command to extract a .pac file to a folder is like so:

```
C:\KCAP.EXE [source file] [destination folder]
```

KCAP.EXE is not exactly a user friendly utility and will give you no indication of failure on error. It will fail if [destination folder] does not exist so you have to create the destination folder first. I decided to extract absolutely everything on the CD and put it all in named folders so that I could always get to the applications easily, should I ever want to. It took an hour or more, but I'll never have to rummage through that CD again looking for any one particular application.

Create yourself a folder where you want to extract the applications to. For now, I'll assume its C:\SonyApps. Create an MS-DOS batch file (just create a normal text file with the extension .bat, e.g. ExtractCD.bat and put the following test in the file:

```
C:\KCAP.EXE E:\APR\SP-006356-08.pac C:\SonyApps
C:\KCAP.EXE E:\APR\SP-009681-01.pac C:\SonyApps
C:\KCAP.EXE E:\APR\SP-010812-01.pac C:\SonyApps

C:\KCAP.EXE E:\APR2\SP-005054-04.pac C:\SonyApps
C:\KCAP.EXE E:\APR2\SP-010923-01.pac C:\SonyApps
C:\KCAP.EXE E:\APR2\WS-000087-00.pac C:\SonyApps
C:\KCAP.EXE E:\APR2\WS-000089-01.pac C:\SonyApps

C:\KCAP.EXE E:\APR3\SP-007028-03.pac C:\SonyApps
C:\KCAP.EXE E:\APR3\SP-007630-06.pac C:\SonyApps
C:\KCAP.EXE E:\APR3\SP-007741-14.pac C:\SonyApps
C:\KCAP.EXE E:\APR3\SP-007842-04.pac C:\SonyApps
C:\KCAP.EXE E:\APR3\SP-009079-01.pac C:\SonyApps
C:\KCAP.EXE E:\APR3\SP-009458-01.pac C:\SonyApps
C:\KCAP.EXE E:\APR3\SP-009464-04.pac C:\SonyApps
C:\KCAP.EXE E:\APR3\SP-009777-05.pac C:\SonyApps
C:\KCAP.EXE E:\APR3\SP-009803-11.pac C:\SonyApps
C:\KCAP.EXE E:\APR3\SP-009883-02.pac C:\SonyApps
C:\KCAP.EXE E:\APR3\SP-009920-00.pac C:\SonyApps
C:\KCAP.EXE E:\APR3\SP-010222-03.pac C:\SonyApps
C:\KCAP.EXE E:\APR3\SP-010394-05.pac C:\SonyApps
C:\KCAP.EXE E:\APR3\SP-010505-01.pac C:\SonyApps
C:\KCAP.EXE E:\APR3\SP-010672-01.pac C:\SonyApps
C:\KCAP.EXE E:\APR3\SP-010677-04.pac C:\SonyApps
C:\KCAP.EXE E:\APR3\SP-010678-03.pac C:\SonyApps
C:\KCAP.EXE E:\APR3\SP-010717-04.pac C:\SonyApps
C:\KCAP.EXE E:\APR3\SP-010748-01.pac C:\SonyApps
C:\KCAP.EXE E:\APR3\SP-010792-00.pac C:\SonyApps
C:\KCAP.EXE E:\APR3\SP-010804-03.pac C:\SonyApps
C:\KCAP.EXE E:\APR3\SP-010838-02.pac C:\SonyApps
C:\KCAP.EXE E:\APR3\SP-010862-03.pac C:\SonyApps
C:\KCAP.EXE E:\APR3\SP-011275-08.pac C:\SonyApps
C:\KCAP.EXE E:\APR3\SP-011275-10.pac C:\SonyApps
C:\KCAP.EXE E:\APR3\SP-011460-00.pac C:\SonyApps
C:\KCAP.EXE E:\APR3\SP-011463-00.pac C:\SonyApps
C:\KCAP.EXE E:\APR3\SP-011650-01.pac C:\SonyApps
C:\KCAP.EXE E:\APR3\SP-011777-00.pac C:\SonyApps
C:\KCAP.EXE E:\APR3\SP-011844-03.pac C:\SonyApps
C:\KCAP.EXE E:\APR3\SP-011969-00.pac C:\SonyApps
C:\KCAP.EXE E:\APR3\SP-012255-00.pac C:\SonyApps
C:\KCAP.EXE E:\APR3\SP-012283-00.pac C:\SonyApps
```

C:\KCAP.EXE E:\APR3\SP-012765-00.pac C:\SonyApps

C:\KCAP.EXE E:\APR4\SP-008670-01.pac C:\SonyApps
C:\KCAP.EXE E:\APR4\SP-009472-02.pac C:\SonyApps
C:\KCAP.EXE E:\APR4\SP-009576-06.pac C:\SonyApps
C:\KCAP.EXE E:\APR4\SP-009948-00.pac C:\SonyApps
C:\KCAP.EXE E:\APR4\SP-010848-00.pac C:\SonyApps
C:\KCAP.EXE E:\APR4\SP-011614-00.pac C:\SonyApps
C:\KCAP.EXE E:\APR4\SP-012644-00.pac C:\SonyApps

C:\KCAP.EXE E:\APR5\SP-007819-02.pac C:\SonyApps
C:\KCAP.EXE E:\APR5\SP-010851-00.pac C:\SonyApps
C:\KCAP.EXE E:\APR5\WS-000002-01.pac C:\SonyApps
C:\KCAP.EXE E:\APR5\WS-000003-02.pac C:\SonyApps
C:\KCAP.EXE E:\APR5\WS-000005-07.pac C:\SonyApps
C:\KCAP.EXE E:\APR5\WS-000091-00.pac C:\SonyApps

Before running it, check the list of files matches your DVD. This is a complete list from my Application Recovery DVD, but Sony may change the list in the future. Adjust as appropriate and double click on the MS-DOS batch file to run it. Note that the files Sony.pac and Sony2-5.pac don't contain any applications or useful information. They're required by the Sony installer that installs everything on the DVD.

When you run the MS-DOS batch file, all the installers should be extracted to separate folders at C:\SonyApps (or wherever you extracted them to). The folders will be named after the part numbers. By looking inside, it will be obvious what some of them are but not all of them. The following table identifies most of them by name – I suggest renaming the folders so you can find the relevant applications without hunting around. The packages starting in "WS-" don't have any actual installer associated with them. They run DOS scripts and/or VB scripts which make various minor changes to the system. They are used by the Sony installer to assist in the uninterrupted installation of the whole DVD – they serve no purpose on their own. There is one "SP-" package that I can't identify, SP-009458-01. It runs extremely quickly and makes no obvious changes anywhere. Anyway, here's the table of what's what.

SP-006356-08	Java Runtime Environment 1.5.0.06
SP-009681-01	Adobe Reader 7.0.5
SP-010812-01	Adobe Photoshop Elements 4.0
SP-005054-04	Memory Stick Formatter
SP-010923-01	Adobe Premiere Elements 2.0
SP-007028-03	Music Server Controller
SP-007630-06	Installs some crappy HTML content that links to a special offer for discounts when buying Adobe products. Avoid.
SP-007741-14	VAIO Entertainment Platform
WS-000087-00	Environment Settings for Windows XP (VB Script)
WS-000089-01	Environment Settings for APR (VB Script)
SP-007842-04	OpenMG Updater (http://www.sony.net/Products/OpenMG/overview/index.html)
SP-009079-01	VAIO Media AC3 Decoder
SP-009458-01	Unidentified
SP-009464-04	AOL 9.0
SP-009777-05	OpenMG Secure Module
SP-009803-11	Roxio DigitalMedia SE
SP-009883-02	SonicStage Mastering Studio Audio Filter Custom Preset
SP-009920-00	SonicStage Mastering Studio Plugins
SP-010222-03	LiquidSurf for VAIO TV Entertainment 1.20
SP-010394-05	Sonic UDF Reader
SP-010505-01	DSD Playback Plug-in
SP-010672-01	DSD Direct
SP-010677-04	SonicStage Mastering Studio
SP-010678-03	SonicStage Mastering Studio Audio Filter
SP-010717-04	Image Converter 2 Plus
SP-010748-01	VAIO Edit Components
SP-010792-00	VAIO Information FLOW Sample Photo
SP-010804-03	VAIO Media

SP-010838-02	VAIO Media Integrated Server
SP-010862-03	VAIO Media Redistribution
SP-011275-08	WinDVD BD for VAIO (This doesn't seem to be the regular version of WinDVD, but special Blu-Ray version, presumably for the VGX-XL202 Blu-Ray model)
SP-011275-10	WinDVD DB for VAIO (Seems to be exactly the same as SP-011275-08 except the data2.cab file is about 5mb smaller)
SP-011460-00	VAIO Information FLOW
SP-011463-00	VAIO Information FLOW Sample Music
SP-011650-01	Skype
SP-011777-00	DVgate Plus
SP-011844-03	Ulead BD DiscRecorder (Presumably for the VGX-XL202 Blu-Ray model since the VGX-XL201 doesn't have a Blu-Ray drive)
SP-011969-00	SonicStage
SP-012255-00	SonicStage Add-on
SP-012283-00	OpenMG AAC Add-On Module
SP-012765-00	Internet Explorer Remote Control Extension
SP-008670-01	Microsoft Works 8
SP-009472-02	Shortcut to MS Office 2003 Standard (just the Desktop shortcut and icon)
SP-009576-06	Click to DVD
SP-009948-00	Adobe Reader 7.0 (Again?)
SP-010848-00	Microsoft Office 2003 Standard Trial Assistant (Whatever the hell that is)
SP-011614-00	Microsoft Office 2003 Standard Trial
SP-012644-00	Adobe Flash Player 8 ActiveX Control
SP-007819-02	Click to DVD Menu Data
SP-010851-00	Norton Ghost 10 Try-and-Buy (6 day trial)
WS-000002-01	Window Cleaning (closes Explorer) (VB Script)
WS-000003-02	Resets Start Menu order (VB Script)
WS-000005-07	BL Number Marking (I have no idea what this is) (VB Script)
WS-000091-00	Environment Delete for APR (VB Script)

Conclusion

That's it. By this point hopefully you have a clean operating system install on your VGX-XL201 VAIO Media Center, and only the software *you want* installed. I hope you found this guide useful.

Respectfully I ask that you don't contact me for support relating to your Sony VAIO PC or relating to this guide. I am just a PC owner like you, and I decided to take the time to write this guide as a courtesy to other consumers who have purchased the same product in the hope that others may not have to go through the same 30+ hours of trial and error that I had to go through to get a clean operating system installation on my PC. It's taken me 12 hours just to write this guide and that's about as much time as I want to give for the cause. I am not an expert in this field or in Sony products in general, and I do not want to become one.

For support I recommend posting on the Club VAIO forums which helped me to get to the point where I could write this guide. This guide will be posted on a thread in the Club VAIO forums and if there are parts of the guide which don't work for you or you feel could be improved on, please post on that thread in the forums. I may or may not update the guide, but even if I don't, other users may benefit from the wisdom of your experience.

Acknowledgements

Thanks to Blencogo, a Club VAIO member who helped me over the initial hurdle of installing the operating system on a PC with a SATA disk drive and Viiv RAID configuration.

Thanks to Akash84, also a Club VAIO member for his thorough writing up of the process he went through to make a clean operating system install for his VAIO laptop, found here: <http://www.club-vaio.sony-europe.com/clubvaio/mvnforum/viewthread?thread=36891>. This thread helped me to understand how to make your VAIO operating system product key work with a regular operating system install CD.

Thanks to philfree, another Club VAIO member for his explanation of the KCAP.exe utility for extracting “.pac” files from the Application Recovery DVD, found here: <http://www.club-vaio.sony-europe.com/clubvaio/mvnforum/viewthread?thread=37599>.

Thanks to the anonymous author of this article: http://www.myplc.com/sony/sony_apps.htm which offers an alternative explanation to the above on how to extract application installation packages from the “.pac” files from the Application Recovery DVD, and for providing a download of the utility which makes this extraction possible.

Finally, a special thanks to Dink Nuhagic, for creating the superb nLite utility, and for making it free ;)

Free Manuals Download Website

<http://myh66.com>

<http://usermanuals.us>

<http://www.somanuals.com>

<http://www.4manuals.cc>

<http://www.manual-lib.com>

<http://www.404manual.com>

<http://www.luxmanual.com>

<http://aubethermostatmanual.com>

Golf course search by state

<http://golfingnear.com>

Email search by domain

<http://emailbydomain.com>

Auto manuals search

<http://auto.somanuals.com>

TV manuals search

<http://tv.somanuals.com>