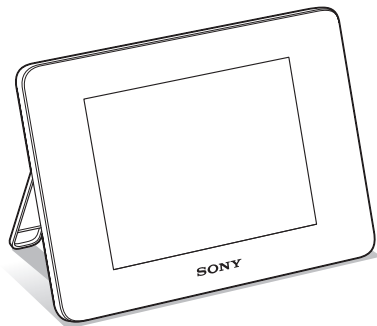


SONY[®]

4-262-215-11 (2)

Digital Photo Frame

DPF-D830/D830L



For your safety	
Let's get the photo frame ready	
Let's view an image	
Try using various functions	
Troubleshooting	
Additional information	

Operating Instructions

Before operating this unit, please read this manual thoroughly and retain it for future reference.

Owner's Record

The model and serial numbers are located at the rear.
Record the serial number in the space provided below. Refer to these numbers whenever you call upon your Sony dealer regarding this product.

Model No. DPF-D830/D830L

Serial No. _____

Product lineup differs by country and region.



© 2010 Sony Corporation

S-Frame

WARNING

To reduce fire or shock hazard, do not expose the unit to rain or moisture.

IMPORTANT SAFETY INSTRUCTIONS

-SAVE THESE
INSTRUCTIONS

**DANGER
TO REDUCE THE RISK OF
FIRE OR ELECTRIC
SHOCK, CAREFULLY
FOLLOW THESE
INSTRUCTIONS**

If the shape of the plug does not fit the power outlet, use an attachment plug adaptor of the proper configuration for the power outlet.

Do not expose the batteries to excessive heat such as sunshine, fire or the like.

CAUTION

Replace the battery with the specified type only. Otherwise, fire or injury may result.

Dispose of used batteries according to the instructions.

For the customers in the U.S.A.

CAUTION

You are cautioned that any changes or modifications not expressly approved in this manual could void your authority to operate this equipment.

If you have any questions about this product, you may call:

*Sony Customer Information Services Center
1-800-222-SONY (7669)*

The number below is for the FCC related matters only.

Regulatory Information

Declaration of Conformity

Trade Name: SONY
Model No.: DPF-D830
Responsible Party: Sony Electronics Inc.
Address: 16530 Via Esprillo, San Diego,
CA 92127 U.S.A.
Telephone No.: 858-942-2230

This device complies with part 15 of the FCC Rules. Operation is subject to the following two conditions:

(1) This device may not cause harmful interference, and (2) this device must accept any interference received, including interference that may cause undesired operation.

Note:

This equipment has been tested and found to comply with the limits for a Class B digital device, pursuant to Part 15 of the FCC Rules.

These limits are designed to provide reasonable protection against harmful interference in a residential installation. This equipment generates, uses, and can radiate radio frequency energy and, if not installed and used in accordance with the instructions, may cause harmful interference to radio communications.

However, there is no guarantee that interference will not occur in a particular installation. If this equipment does cause harmful interference to radio or television reception, which can be determined by turning the equipment off and on, the user is encouraged to try to correct the interference by one or more of the following measures:

- Reorient or relocate the receiving antenna.
- Increase the separation between the equipment and receiver.
- Connect the equipment into an outlet on a circuit different from that to which the receiver is connected.
- Consult the dealer or an experienced radio/TV technician for help.

For the State of California, USA only

Perchlorate Material - special handling may apply, See

www.dtsc.ca.gov/hazardouswaste/perchlorate

Perchlorate Material: Lithium battery contains perchlorate.

For the Customer in Europe

This product has been tested and found compliant with the limits set out in the EMC Directive for using connection cables shorter than 3 meters (9.8 feet).

Attention

The electromagnetic fields at the specific frequencies may influence the picture of this digital photo frame.

Notice

If static electricity or electromagnetism causes data transfer to discontinue midway (fail), restart the application or disconnect and connect the communication cable (USB, etc) again.

Disposal of Old Electrical & Electronic Equipment (Applicable in the European Union and other European countries with separate collection systems)



This symbol on the product or on its packaging indicates that this product shall not be treated as household waste. Instead it shall be handed over to the applicable collection point for the recycling of electrical and electronic equipment. By ensuring this product is disposed of correctly, you will help prevent potential negative consequences for the

environment and human health, which could otherwise be caused by inappropriate waste handling of this product. The recycling of materials will help to conserve natural resources. For more detailed information about recycling of this product, please contact your local Civic Office, your household waste disposal service or the shop where you purchased the product.

Disposal of waste batteries (applicable in the European Union and other European countries with separate collection systems)



This symbol on the battery or on the packaging indicates that the battery provided with this product shall not be treated as household waste. On certain batteries this symbol might be used in combination with a chemical symbol.

The chemical symbols for mercury (Hg) or lead (Pb) are added if the battery contains more than 0.0005% mercury or 0.004% lead. By ensuring these batteries are disposed of correctly, you will help prevent potentially negative consequences for the environment and human health which could otherwise be caused by inappropriate waste handling of the battery. The recycling of the materials will help to conserve natural resources. In case of products that for safety, performance or data integrity reasons require a permanent connection with an incorporated battery, this battery should be replaced by qualified service staff only. To ensure that the battery will be treated properly, hand over the product at end-of-life to the applicable collection point for the recycling of electrical and electronic equipment. For all other batteries, please view the section on how to remove the battery from the product safely. Hand the battery over to the applicable collection point for the recycling of waste batteries. For more detailed information about recycling of this product or battery, please contact your local Civic Office, your household waste disposal service or the shop where you purchased the product.

Notice for the customers in the countries applying EU Directives

The manufacturer of this product is Sony Corporation, 1-7-1 Konan Minato-ku Tokyo, 108-0075 Japan. The Authorized Representative for EMC and product safety is Sony Deutschland GmbH, Hedelfinger Strasse 61, 70327 Stuttgart, Germany. For any service or guarantee matters please refer to the addresses given in separate service or guarantee documents.

Notice for users

Program © 2010 Sony Corporation
Documentation © 2010 Sony Corporation

All rights reserved. This manual or the software described herein, in whole or in part, may not be reproduced, translated or reduced to any machine readable form without prior written approval from Sony Corporation.

IN NO EVENT SHALL SONY CORPORATION BE LIABLE FOR ANY INCIDENTAL, CONSEQUENTIAL OR SPECIAL DAMAGES, WHETHER BASED ON TORT, CONTACT, OR OTHERWISE, ARISING OUT OF OR IN CONNECTION WITH THIS MANUAL, THE SOFTWARE OR OTHER INFORMATION CONTAINED HEREIN OR THE USE THEREOF.

Sony Corporation reserves the right to make any modification to this manual or the information contained herein at any time without notice.

The software described herein may also be governed by the terms of a separate user license agreement.

Any design data such as sample pictures provided in this software cannot be modified or duplicated except for the purpose of personal use. Any unauthorized duplication of this software is prohibited under copyright law.

Please note that unauthorized duplication or modification of portraits or copyrighted work could infringe the rights reserved by rights holders.

On the illustrations and screen shots used in this manual

The illustrations and screen shots used in this manual may not be identical to those actually used or displayed.

Read this before using

Notes on playback

Connect the AC adaptor to an easily accessible AC outlet. Should you notice an abnormality in it, disconnect it from the AC outlet immediately.

Notes on copyrights

Duplication, edition, or printing of a CD, TV programs, copyrighted materials such as pictures or publications, or any other materials except for your own recording or creation is limited to private or domestic use only. Unless you hold copyright or have permission of copyright holders for the materials to be duplicated, use of those materials beyond this limit may infringe the provisions of the copyright law and be subject to the copyright holders claim for damages.

When using photo images with this digital photo frame, pay special attention not to infringe the provisions of the copyright law. Any unauthorized use or modification of other's portrait may also infringe their rights.

For some demonstrations, performances, or exhibits, photography may be forbidden.

Recording contents are not guaranteed

Sony shall assume no responsibility for any accidental or consequential damages or loss of the recording contents which may be caused by use or malfunction of the digital photo frame or memory card.

Backup recommendations

To avoid potential risk of data loss caused by accidental operation or malfunction of the digital photo frame, we recommend that you save a backup copy of your data.

Notes on LCD screen

- Do not press against the LCD screen. The screen may be discolored and that may cause a malfunction.
- Exposing the LCD screen to direct sunlight for a long period may cause malfunctions.
- The LCD screen is manufactured using extremely high-precision technology, so over 99.99% of the pixels are operational for effective use. However, there may be some tiny black points and/or bright points (white, red, blue or green in color) that constantly appear on the LCD screen. These points are normal in the manufacturing process and do not affect the viewing in any way.
- Images may trail across on the LCD screen in a cold location. This is not a malfunction.

Table of Contents

Read this before using5

For your safety

Checking included items8
Identifying the parts9
 ■ Digital photo frame9
 ■ Remote control10

Let's get the photo frame ready

Remote control11
Stand11
Turning the photo frame on13
 About the built-in battery pack14
Operations in an initial state14
Setting the current time15

Let's view an image

Inserting a memory card16
Changing the display17
 About the information displayed on the LCD screen18
Playing a video file19
Playing a slideshow with background music20
 Importing a music file20
 Selecting a music file to play20
 Playing background music with a slideshow21

Try using various functions

Various functions22
Sorting images (Filtering)23
Specifying the playback device24
Adjusting image size and orientation (Zoom in/Zoom out/Rotate)24
Changing the settings of the auto power on/off function25

Changing the settings	27
Displaying an image stored in a USB memory device	28
Connecting to a computer	29

Troubleshooting

If an error message appears	30
If trouble occurs	31

Additional information

Precautions	34
Installation	34
Cleaning	34
Restrictions on duplication	34
Disposing of the photo frame	34
Specifications	35
On trademarks and copyrights	36

Checking included items

Make sure that the following items are included.

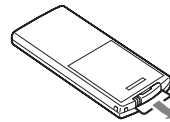
Digital photo frame (1)



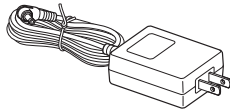
Remote control (1)



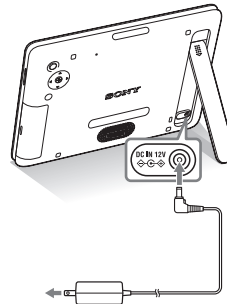
Removing the protective sheet (page 11)



AC adaptor (1)



Connecting to the AC power source (page 13)



Stand cap (1)

Jacket cover* (1) (DPF-D830L only)

Operating Instructions (this manual) (1)

CD-ROM (Digital Photo Frame Handbook) (1)

Warranty (1) (In some regions, the warranty is not supplied.)

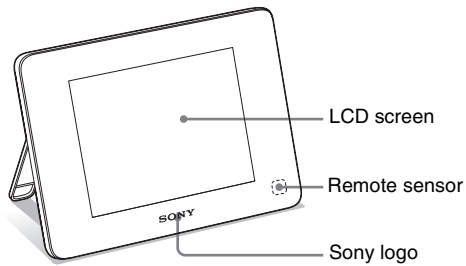
The supplied CD-ROM contains the Digital Photo Frame Handbook that explains operations and setups of the digital photo frame in detail. To view the handbook, insert the CD-ROM into the computer and double-click the Handbook icon. (To display the handbook, you need Adobe Acrobat Reader.)

* For details on how to attach the jacket cover to the photo frame, refer to the supplied leaflet "Attaching the jacket cover".

Identifying the parts

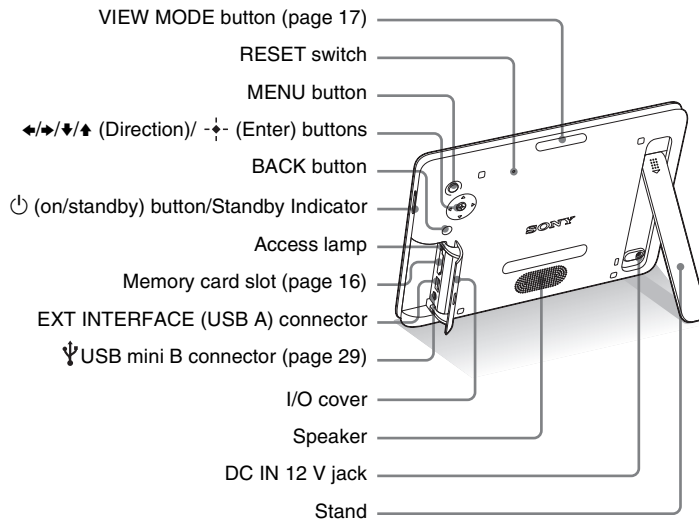
■ Digital photo frame

Front



For your safety

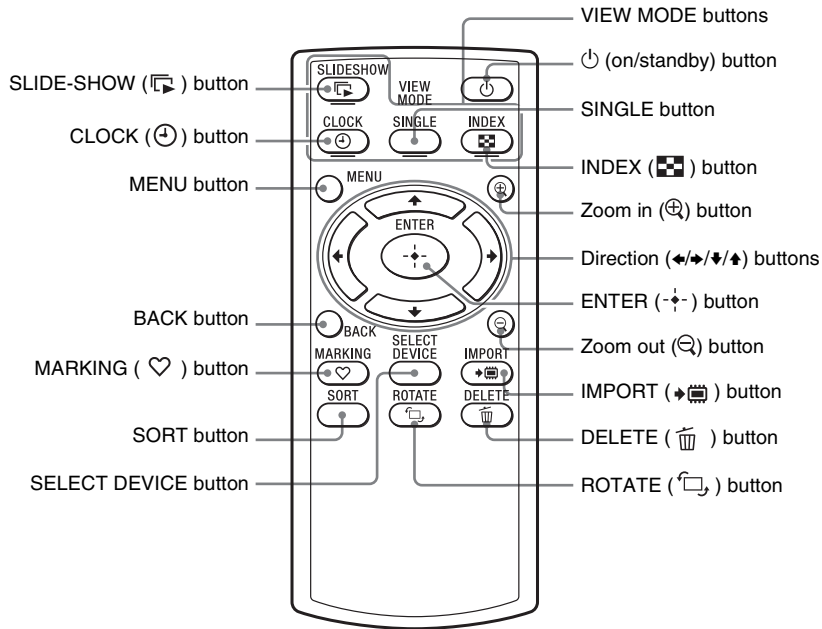
Rear



Continued

9 GB

Remote control



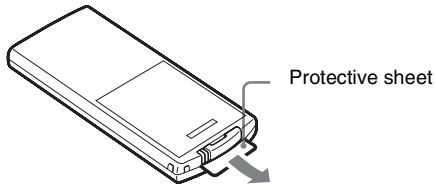
About descriptions in this manual

The operations described in this manual are based on those with the buttons on the photo frame. When an operation is performed differently, for example, with the remote control and the buttons on the photo frame, it will be explained in a tip.

Let's get the photo frame ready

Remote control

Pull out the protective sheet before use as shown in the figure.

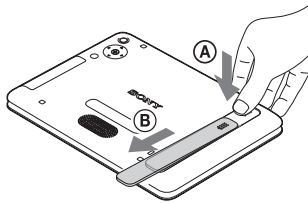


Using the remote control

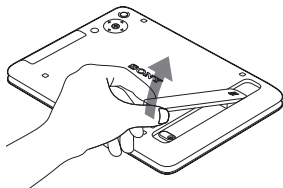
Point the top end of the remote control towards the remote sensor on the photo frame.

Stand

- 1 Push on the ▲ mark on the stand in the direction of arrow ① and slide the stand in the direction of arrow ② until it stops, as illustrated below.



- 2 Extend the stand by holding the lower part of the stand then place it on a flat surface. You can adjust the angle of the stand.



Notes

- **If the remote control stops working:**
Replace the battery (CR2025 lithium battery) with a new one.
- When the lithium battery becomes weak, the operating distance of the remote control may shorten, or the remote control may not function properly. In this case, replace the battery with a Sony CR2025 lithium battery. Use of another battery may present a risk of fire or explosion.

Replacing procedures:

CD-ROM (Handbook) page 9

WARNING

Battery may explode if mistreated. Do not recharge, disassemble or dispose of in fire.

Tip

The ⏻ (standby) button on the remote control cannot be used when the photo frame is powered only by the built-in battery pack. Use the ⏻ (standby) button on the photo frame.

Notes

- If you extend the stand in step 1 without sliding it to the limit in the direction of arrow ②, the stand may be damaged.
- Be sure that the stand is set in a stable position when you place the photo frame. It may fall unless the stand is extended to the limit.

Let's get the photo frame ready

Continued

11 GB

Tips

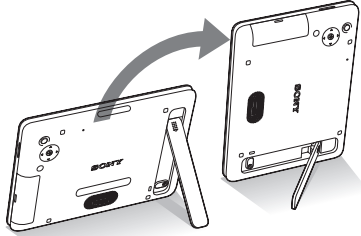
■ When the photo frame is placed in the portrait orientation

- The display is automatically rotated on the portrait orientation.
- A video file is not rotated automatically even if you change the orientation of the photo frame.

■ Sony logo

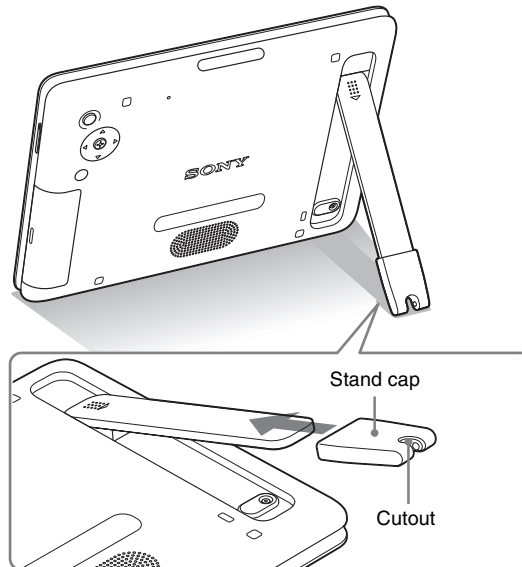
When the photo frame is placed in the portrait orientation or when you turn off the power, the Sony logo doesn't light up.

You can set the photo frame to portrait or landscape orientation by rotating it without moving the stand.



To attach the stand cap

Attach the stand cap to the stand. You can set the photo frame in a stable position either in portrait or landscape orientation if you extend the stand to the limit.

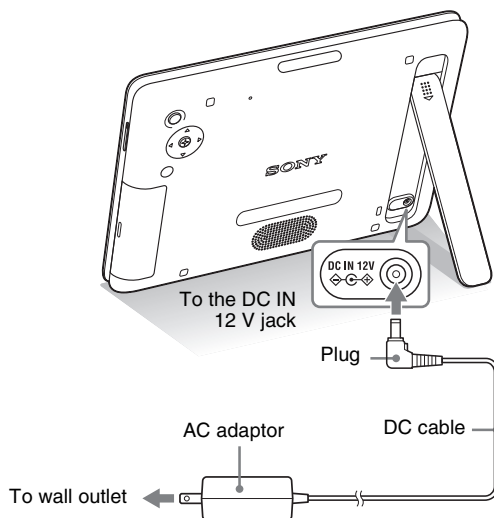


When using the AC adaptor, pass the DC cord through the cutout of the stand.

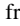
Detach the stand cap from the stand before folding the stand into the rear of the photo frame.

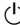
Turning the photo frame on

- 1 Insert the plug of the AC adaptor into the DC IN 12 V jack on the rear of the photo frame.
- 2 Connect the AC adaptor to the wall outlet.
The photo frame is automatically turned on.



When using the photo frame with the built-in battery pack

Turn on the photo frame with the  (standby) button on the photo frame.

If the photo frame is powered only by the built-in battery pack, the  (standby) button on the remote control does not operate.

Notes

- The socket outlet should be as close as possible to the unit, and easily accessible.
- Do not place the photo frame on an unsteady or tilted surface.
- Connect the AC adaptor to an easily accessible wall outlet close by. If trouble occurs while using the adaptor, immediately shut off the power by disconnecting the plug from the wall outlet.
- Do not short the plug of the AC adaptor with a metal object. Doing so may cause a malfunction.
- Do not use the AC adaptor placed in a narrow space, such as between a wall and furniture.
- After use, remove the AC adaptor from the DC IN 12 V jack on the photo frame, and remove the AC adaptor from the wall outlet.
- Do not turn the photo frame off or disconnect the AC adaptor from the photo frame while accessing an image. Doing so may damage the photo frame.
- The supplied AC adaptor is designed to be used with this photo frame only. It cannot be used with any other devices.
- The AC plug shape may differ depending on the region you purchase the photo frame.

Let's get the photo frame ready

Continued

13 ^{GB}

Tips

■ On battery charging

- Charge the battery under ambient temperature within the range of 10 °C to 30 °C (50 °F to 86 °F). Under temperature outside the above range, the battery may not be charged efficiently.
- If the usable time of the battery is decreased by nearly half even if it has been fully charged, the battery may be deteriorated. Consult your Sony dealer or Sony service facilities.
- Even if you do not use the photo frame for an extended period of time, fully charge the battery every six months.

■ On battery life

A battery has limited life. Battery life is gradually reduced with frequent use or over time. If the usable time is reduced significantly, battery life may come to an end. Consult your Sony dealer or Sony service facilities.

Battery life varies depending on the status of storage or use, or the environment.

Tips

■ If the photo frame is not operated


If the photo frame is not operated for 10 seconds, the demo mode is displayed.

■ Releasing the demonstration mode

If any other button than the power button is pressed, the screen returns to the initial display.

About the built-in battery pack

The built-in battery will be fully charged if the remaining battery level is reduced to a certain level whenever the AC adaptor is connected to the photo frame.

The standby indicator is lit in orange during charging and the  mark is displayed in the upper right of the screen when the photo frame is in use during charging.

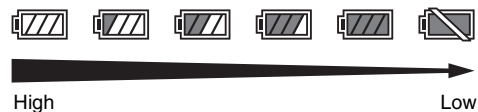
Approximate charging time

A drained battery can be fully charged in approximately 180 minutes.*

* In a case in which the battery is charged under ambient temperature of 25 °C (77 °F). (It may take longer, depending on the status of use or other circumstances.)

To check the remaining battery level

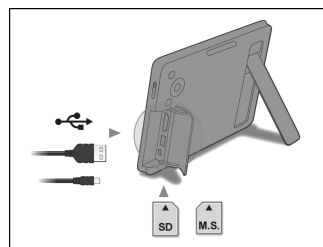
The remaining battery indicator is displayed on the right of the screen.




When the battery charge falls, a message will be displayed to prompt you for charging.

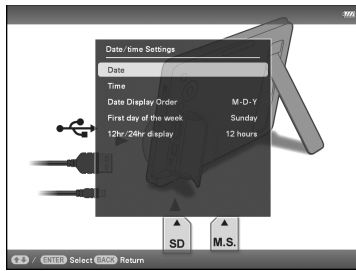
Operations in an initial state

When the photo frame is turned on, the initial display appears.



Setting the current time

- 1 Press MENU, and \leftarrow/\rightarrow to select the  (Settings) tab.
 \uparrow/\downarrow [Date/time Settings] \rightarrow ENTER



- 2 Press \uparrow/\downarrow to select [Time] \rightarrow ENTER.
 \uparrow/\downarrow to select a value. \rightarrow \leftarrow/\rightarrow (hour, minute, and second)
Setting complete. \rightarrow ENTER
- 3 Press MENU.

In the same window, you can use the same procedures as time setting to set the following:

Setting items

- Date
- Date Display Order (Y-M-D/M-D-Y/D-M-Y)
- First day of the week (Sunday/Monday)
- 12hr/24hr display (12 hours/24 hours)

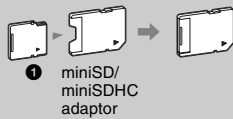
Let's get the photo frame ready

Let's view an image

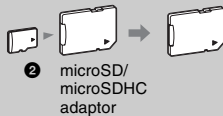
Note

When using a memory card of the following types, make sure to insert it in an appropriate adaptor.
If you insert it without an adaptor, you may be unable to remove it. As shown in the right-most illustration below, make sure to insert the following types of memory cards with inserted in the appropriate adaptor.

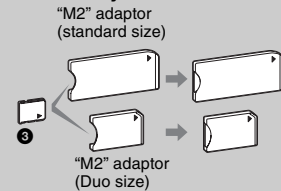
1 miniSD / miniSDHC



2 microSD/microSDHC



3 "Memory Stick Micro"

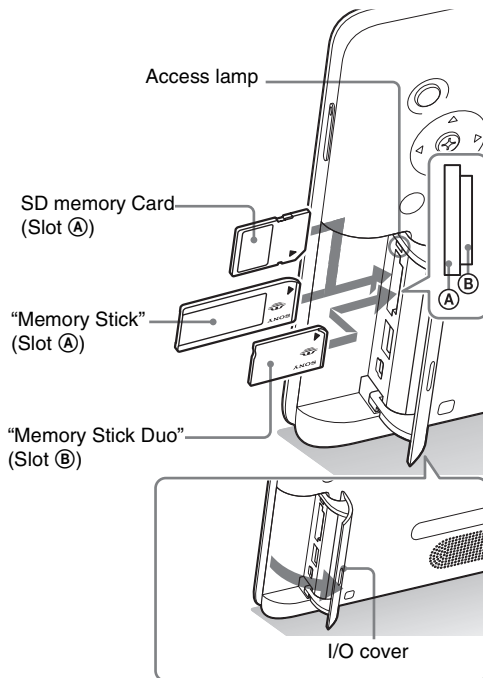


Tip

- S-Frame fails to auto rotate if:
 - An image file has been shot with a DSC which doesn't support Exif rotate tag recording.
 - An image file is retouched and saved with retouching software which breaks the Exif rotate tag.

Inserting a memory card

- 1 Open the I/O cover.
- 2 Insert a memory card firmly into the corresponding slot with its label side facing toward you (when you are facing the back side of the photo frame).



When you insert a memory card

The images on the memory card are automatically displayed.

If you switch off the power while they are being displayed

If you switch the power back on, the same images continue to be displayed.

If the access lamp does not flash

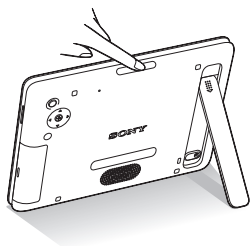
Reinsert the memory card after checking the label side of the memory card.

About the A and B slots

If you insert memory cards both into the (A) and (B) slots simultaneously, the photo frame will not work properly.

Changing the display

- 1 Press VIEW MODE repeatedly to select the view mode you want to display.

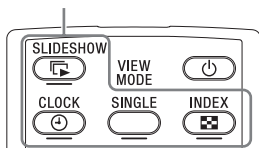


The display changes to the selected view mode.

Using the remote control




Press the VIEW MODE button corresponding to the view mode you want to display.

VIEW MODE buttons



- 2 Press $\leftarrow/\rightarrow/\uparrow/\downarrow$ to select a desired style, and press ENTER.

The view mode screen is displayed.

Displays	Styles
 Slideshow	Single view, Multi image view, Clock view, Calendar view, Time Machine, Random view
 Clock and Calendar	Clock 1 to Clock 11 Calendar 1 to Calendar 3 Lunar Calendar, Arabic Calendar, Farsi Calendar
SINGLE	Entire image, Fit to screen, Entire image (with Exif), Fit to screen (with Exif)
 Index	Index 1 to Index 3

Note

If you do not operate the photo frame for a certain period of time, the style indicated by the cursor is automatically selected.

Tip

Style descriptions:
CD-ROM (Handbook) –
“Changing the display”

Let's view an image

Continued

17 GB

About the information displayed on the LCD screen



The following information is displayed.

① Display type (In the Single view mode)

- Entire image
- Fit to screen
- Entire image (with Exif)
- Fit to screen (with Exif)

② Ordinal number of the displayed image/ total number of images

Input media indication for the displayed image is shown as follows:

Icons	Meaning
	Internal memory
	"Memory Stick" input
	SD Memory Card input
	USB External device input

③ Image details

■ When a photo is displayed

- File format (JPEG(4:4:4), JPEG(4:2:2), JPEG(4:2:0), BMP, TIFF, RAW)
- Number of pixels (width × height)
- Manufacturer name of image input device
- Model name of image input device
- Shutter speed (e.g.: 1/8)
- Aperture value (e.g.: F2.8)
- Exposure value (e.g.: +0.0EV)
- Rotation information

■ When a video file is played

- File format (AVI, MOV)
- Number of pixels (width × height)
- Playback duration
- File size

④ Setting information

Icons	Meaning
	Protect indication
	Associated file indication (Displayed when there is an associated file such as a motion file or a miniature e-mail image file.)
	Displays when you have registered a mark.
	Displays a video file.

⑤ Image number (folder-file number)

This is displayed if the image is DCF compliant.

If the image does not comply with DCF, its file name is displayed.

If you named or renamed the file on your computer and the file name includes characters other than alphanumeric characters, the file name may not be able to be displayed properly on the photo frame. Also, for a file created on a computer or other device, a maximum of 10 characters from the beginning of the file name can be displayed.

■ Note

Only alphanumeric characters can be displayed.

⑥ Shooting date/time

⑦ Battery remaining indicator

The remaining battery level is indicated.

If the battery indicator is not displayed on the screen, press MENU. It will be displayed on the upper right of the menu screen.

Playing a video file

1 Select a video file.

- ① Press SINGLE.
- ② Press \leftarrow/\rightarrow to select the desired style and press ENTER.
- ③ Press \leftarrow/\rightarrow to advance/reverse the files to select a video file you want to play.

Using the Index display

- ① Press \square (INDEX).
- ② Press $\leftarrow/\rightarrow/\uparrow/\downarrow$ to select a video file you want to play.

2 Press ENTER.

The selected video file starts playback.

To adjust the volume

Press \downarrow/\uparrow during playback or playback pause of the video file.

To pause playback

Press ENTER during playback of the video file.

To resume playback, press ENTER again.

Fast forward/backward playback

Press \leftarrow/\rightarrow during playback of the video file. The file is played forward or backward at high speed while you hold down the \rightarrow or \leftarrow button. When you release the button, normal playback starts from that point.

Depending on the video file, fast forward/backward playback may not be available with the photo frame.

To stop playback

Press BACK while the video file is being played.

Note

- You cannot play the following type of video file:
 - Video files processed with other video codec than Motion JPEG
 - Video files that exceed maximum number of pixels either in width or height
(We cannot guarantee operation with video files not mentioned above.)
- Fast forward/backward playback and playback pause are not available during Slideshow display.

Let's view an image

Tips


- To clear the selection, select the file to be cleared then press ENTER. The check mark (✓) next to the selected file disappears.
- To delete a music file imported to internal memory, select [Delete BGM] on the [Slideshow Settings] screen in step 2 then press ENTER. Press $\blacktriangledown/\blacktriangle$ to select the music file you want to delete from the music file list and press ENTER. A check mark will be displayed next to the selected file. Press MENU then press ENTER when the confirmation screen appears. The file will be deleted from the music file list.

Notes


- Playback of the imported music file is enabled only as BGM on a slideshow.
- Only music files imported to internal memory can be played as BGM.
- Up to 40 music files can be imported to internal memory of the photo frame.
- Up to 200 music files in the inserted memory card can be displayed.
- A music file shows only the file name. A music title and artist's name cannot be shown.

Playing a slideshow with background music


Importing a music file

- 1** Insert a memory card or connect a USB external device that contains a music file into the photo frame.
- 2** Press MENU, select the  (Settings) tab with $\blacktriangleleft/\blacktriangleright$, then press $\blacktriangledown/\blacktriangle$ to select [Slideshow BGM Settings].
- 3** Press $\blacktriangledown/\blacktriangle$ to select [Import BGM] and press ENTER.
- 4** Press $\blacktriangledown/\blacktriangle$ to select the memory card inserted or the USB external device connected in step 1.
- 5** Select a music file you want to import from the music file list with $\blacktriangledown/\blacktriangle$ and press ENTER.
A check mark (✓) is displayed next to the selected file.
- 6** Repeat step 5 when you want to select two or more files.
- 7** Press MENU after you finish selecting the music file(s).
- 8** Press ENTER when the confirmation screen is displayed.
The selected music file is imported to internal memory of the photo frame.






Selecting a music file to play



- 1** Press MENU, select the  (Settings) tab with $\blacktriangleleft/\blacktriangleright$, then press $\blacktriangledown/\blacktriangle$ to select [Slideshow BGM Settings].
- 2** Press $\blacktriangledown/\blacktriangle$ to select [Select BGM] and press ENTER.
- 3** Select a music file you want to play from the imported music file list with $\blacktriangledown/\blacktriangle$ and press ENTER.
A check mark (✓) is displayed next to the selected file.
- 4** Repeat step 3 if you want to select two or more music files.

5 Press MENU.

When you select  (Slideshow) on the view mode screen, the music file with a check mark (✓) is played.

Playing background music with a slideshow



1 Press MENU, select the  (Settings) tab with /, then press / to select [Slideshow BGM Settings].

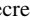
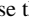
2 Press / to select [BGM ON/OFF] and press ENTER.

[ON]: Background music is played while a slideshow is run.

[OFF]: Background music is not played while a slideshow is run.

To adjust the volume

The volume adjustment screen appears on the right of the screen if you press /.

To increase the volume, press . To decrease the volume, press .

Notes

- Fast forward/backward playback of background music is not available. Also, you cannot change the playback order of background music files.
- Background music cannot be played during playback of the video. The sound of the video file is played with the video. The background music for the photo displayed after playback of the video will start playback from the beginning of the next music file.
- If a music file to play is not selected from the imported music file list even if [BGM ON/OFF] is set to [ON], background music will not be played.

Tip

You can adjust the volume on the initial display or single image display.

Let's view an image

Try using various functions

💡 Tips

■ Importing

The number of images to be saved in the internal memory:

- Resize: approx. 4,000 images
- Original: the number of images may vary, depending on the original image file size.

📌 Notes

■ Exporting

Any memory card or USB external device that is not recognized by this photo frame is listed in gray and cannot be selected.

■ Importing

Importing video files to internal memory using the buttons on the photo frame is not available. To import a video file, connect a computer to the photo frame and copy a video file on the computer to internal memory on the photo frame. For details, see “Connecting to a computer” (page 29).

■ During exporting/deleting

Avoid doing the following. Doing so may damage this photo frame, memory card, USB external device, or the data:


- Turning off the power
- Removing a memory card
- Removing an USB external device
- Inserting another card

■ When deleting

If deletion has started, the deleted image cannot be recovered even if you stop deletion.

Various functions

- Importing an image (to Internal memory)
- Exporting an image (from Internal memory)
- Deleting an image
- Marking an image

- 1 When a desired image is displayed, press MENU then \leftarrow/\rightarrow to select the  (Editing) tab.
- 2 Press \downarrow/\uparrow to select the desired menu item (Import/Export/Delete/Marking), and press ENTER.
- 3 Press \downarrow/\uparrow to select [... this image], [... multiple images] or [... all images], and press ENTER. (“...” stands for each command: “Import”, “Export”, “Delete”, or “Mark”.)

[... this image]:

Press \downarrow/\uparrow to select the destination, and press ENTER.

[... multiple images]:

Press $\leftarrow/\rightarrow/\downarrow/\uparrow$ to select a desired image in the image list, and press ENTER to add “✓”.

Repeat this operation to select multiple images.



To clear the selection: Select the image and press ENTER. “✓” disappears from the image.

After you finish selecting the images, press MENU and select the destination.


[... all images]:

All the images are displayed with “✓”.

Press MENU and select the destination.

- 4 Press ENTER when the confirmation screen is displayed.

Sorting images (Filtering)

- 1 When a desired image is displayed, press MENU then \leftarrow/\rightarrow to select the  (Editing) tab.
- 2 Press \downarrow/\uparrow to select [Sort] and press ENTER.
- 3 Select a sort style using \downarrow/\uparrow and press ENTER.



- **[Sort by date]:** Filters by the shooting date.
- **[Sort by folder]:** Filters by the folder.
- **[Sort by vertical/horizontal]:** Filters by the image orientation.
- **[Sort by mark]:** Filters by the mark.
- **[Sort by videos/photos]:** Filters according to files that contain videos or photos.

- 4 Press $\leftarrow/\rightarrow/\downarrow/\uparrow$ to select the item you want, then press ENTER.

To cancel the sort

Press MENU while the sorted images are displayed, select [Exit sort (show all photos)] and press ENTER.

To change the sort style


Press BACK while the sorted images are displayed then select another sort style.

Tip

Using the remote control

Press SORT when an image is displayed on the screen.

Note

During Clock and Calendar display, you cannot select the  (Editing) tab.

Notes

During sorting

Avoid doing the following. Doing so may damage this photo frame, memory card, USB external device, or the data:

- Turning off the power
- Removing a memory card
- Removing a USB external device
- Inserting another card

Sort is automatically cancelled

- When the playback device is changed.
- When images on a memory card are sorted and the memory card is removed.
- When images on an USB external device are sorted and the USB external device is removed.


Try using various functions

Tips

■ What is “playback device”?

A memory card, a USB external device, or internal memory.






Note

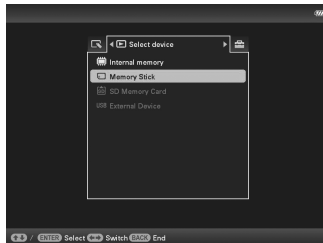
During Clock and Calendar display, you cannot select the  (Select device) tab.

Notes

- Enlarging an image may reduce the quality depending on the image size.
- A video file cannot be enlarged or reduced.

Specifying the playback device

- 1 Press MENU then select the  (Select device) tab with / .
- 2 Press /  to select the device you want to display and press ENTER.




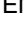
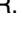
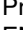



Using the remote control

Press SELECT DEVICE.



Adjusting image size and orientation (Zoom in/Zoom out/Rotate)

Enlarging/Reducing

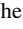
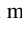

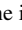
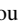

- 1 Press MENU in Single view mode, /  to select the  (Editing) tab, /  to select [Zoom], and press ENTER.
- 2 Press /  to select the enlargement factor and press ENTER.

You can enlarge an image from 1.5 times to 5 times (maximum) the original scale. You can move an enlarged image up, down, left and right.

Using the remote control

To enlarge an image, press  (zoom in) on the remote control in Single view mode. To reduce an enlarged image, press  (zoom out).


Saving an enlarged or a reduced image (Crop and save)

- When you move the enlarged image with / / /  and press MENU, the image is saved in the trimmed size.
- You can select the saving method by pressing / .

Saving methods: [Save as new image], [Overwrite]*

* JPEG file (extension: .jpg) only


Rotating

- 1 Press MENU in Single view mode, \leftarrow/\rightarrow to select the  (Editing) tab, \downarrow/\uparrow to select [Rotate], and press ENTER.




- 2 Press \downarrow/\uparrow to select the angle of rotation and press ENTER.
You can select an angle of rotation from among 90 degrees, 180 degrees and 270 degrees clockwise.

Using the remote control

You can also rotate an image with  (ROTATE) on the remote control. The image rotates 90 degrees counterclockwise every time you press the button.

Changing the settings of the auto power on/off function

You can use the timer function to turn the photo frame on or off automatically when the photo frame is turned on.

- 1 Press MENU, \leftarrow/\rightarrow to select the  (Settings) tab.
- 2 Press \downarrow/\uparrow to select [Auto Power ON/OFF] and press ENTER.

Tip

When displaying the images in the internal memory, the information used to rotate the image is retained even after the power is turned off.

Notes

- An enlarged image cannot be rotated.
- You cannot rotate a video file.

Try using various functions

Tips

■ During operation

The power is turned off automatically at the time you set for [Power-OFF timer].

■ During the standby mode

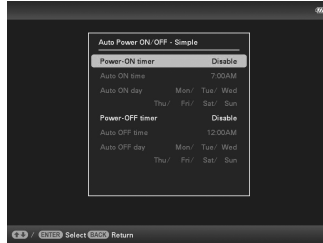
The power is turned on automatically at the time you set for [Power-ON timer].

Continued

25 GB

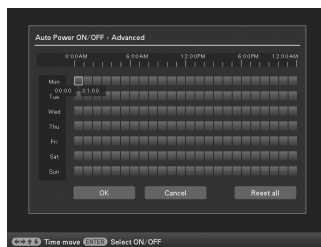
- 3** Press \downarrow/\uparrow to select [Setup method], and press ENTER. Then, press \downarrow/\uparrow to select [Simple], [Advanced] or [Auto off] and press ENTER.

[Simple]



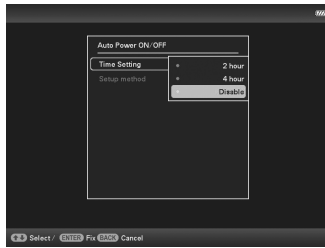
- 1 Press \downarrow/\uparrow to select [Time Setting] \rightarrow ENTER.
- 2 Press \downarrow/\uparrow to select [Power-ON timer] or [Power-OFF timer] \rightarrow ENTER.
- 3 Press \downarrow/\uparrow to select [Enable] \rightarrow ENTER.
- 4 [Auto ON time]/ [Auto OFF time] setting
 \downarrow/\uparrow : Set the time.
AM or PM is displayed when you select [12 hours] on the time display setting.
- 5 [Auto ON day] / [Auto OFF day] setting
 \downarrow/\uparrow : Add a check mark to select the day on which you want to activate the timer.
Move the cursor to [OK], and press ENTER.

[Advanced]



- 1 Press \downarrow/\uparrow to select [Time Setting] \rightarrow ENTER.
- 2 Press $\leftarrow/\rightarrow/\downarrow/\uparrow$ to select the day of the week or a time zone* for which you want to set or cancel the auto power on/off setting, then press ENTER to change the color of the time zone.
* You can set a time zone by one hour units.
Blue time zone: Power ON status
Gray time zone: Power OFF status
- 3 Press $\leftarrow/\rightarrow/\downarrow/\uparrow$ to select [OK].


[Auto off]

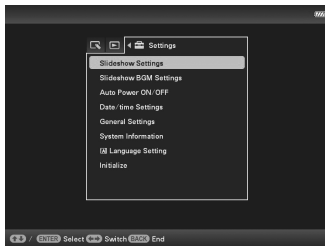


- ① Press \downarrow/\uparrow to select [Time setting] \Rightarrow ENTER.
- ② Press \downarrow/\uparrow to select the desired period after which you want to turn off the photo frame automatically: [2 hours], [4 hours], or [Disable]. Then press ENTER.

4 Press MENU.

Changing the settings


- 1 Press MENU, then \leftarrow/\rightarrow to select the  (Settings) tab.
- 2 Press \downarrow/\uparrow to select the item and setting value, then press ENTER.



Setting items

- Slideshow Settings
- Slideshow BGM Settings
- Auto Power ON/OFF
- Date/time Settings
- General Settings (Listing Order, Sony logo ON/OFF etc.)
- Language Setting
- Initialize

Notes

- Depending on the status on the photo frame, some settings of some items cannot be changed. They are displayed in gray and cannot be selected.
- During Clock and Calendar display, you can make settings in the  (Settings) tab only.

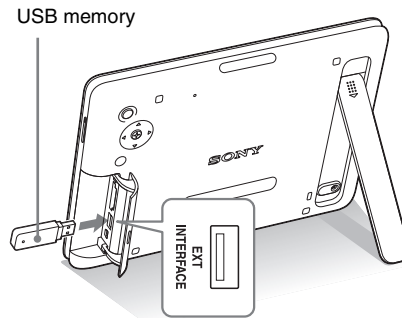
Try using various functions

■ Notes

- The playback device will be switched to the USB external device if you connect the USB memory to the USB A connector during playback of the image in the internal memory.
- Do not disconnect the USB memory, or turn off the photo frame while the access lamp on the photo frame is flashing. Doing so may damage the data stored in the USB memory. Sony assumes no responsibility for any damage or loss of data.
- The photo frame cannot use USB memory data that has been encrypted or compressed using, for instance, fingerprint authentication or a password.
- Do not connect a computer to the USB mini B connector on the photo frame simultaneously when a USB memory is connected to the EXT INTERFACE (USB A) connector.
- The photo frame may not be able to access files normally from a USB hub or USB device with a built-in USB hub may not operate properly.
- The I/O cover cannot be closed with a USB memory device inserted.

Displaying an image stored in a USB memory device

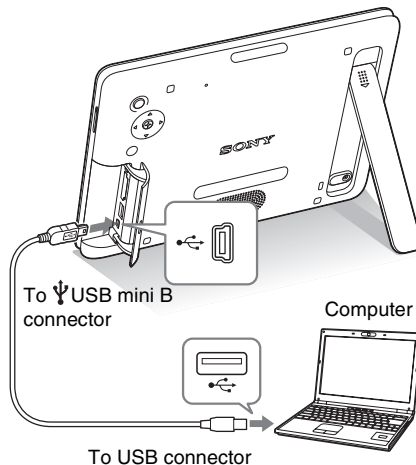
- 1 Connect the AC adaptor to the photo frame, and to the AC power source.
- 2 Turn on the photo frame.
- 3 Open the I/O cover.
- 4 Connect the USB memory device to the EXT INTERFACE (USB A) connector on the photo frame.



- 5 Select the [USB] External Device in Select device (page 24).
For details on the slideshow, see page 17. For details on adding images to the internal memory, see page 22.

Connecting to a computer

- 1 Connect the AC adaptor to the photo frame, and to the AC power source.
- 2 Open the I/O cover.
- 3 Connect the computer and photo frame with a commercially available USB cable.
- 4 Turn the photo frame on.
- 5 Operate the computer to exchange images with the internal memory of the photo frame.



System Requirements

■ Windows

Recommended OS: Microsoft Windows 7/Windows Vista SP2 /
Windows XP SP3

Port: USB port

■ Macintosh

Recommended OS: Mac OS X (v10.4 or later)

Port: USB port

■ Notes

- Use a mini B-Type USB cable.*
 - * When you use a commercially available USB cable, use a USB cable with a mini B-type plug (for the USB mini B connector of this unit, frame-side connector type) shorter than 3 meters.
- If multiple USB devices are connected to a computer or if a hub is used, a problem may occur. In such a case, simplify the connection.
- You cannot operate the photo frame from another USB device being used simultaneously.
- Do not disconnect the USB cable during data communication.
- Operation with all computers that satisfy the recommended system requirements is not guaranteed.
- The photo frame has been demonstrated as operable when connected to a computer. When other devices are connected to the photo frame, these devices may not recognize the internal memory of photo frame.
- Do not connect a computer to the USB mini B connector on the photo frame simultaneously when a USB memory is connected to the EXT INTERFACE (USB A) connector.
- The I/O cover cannot be closed with the USB cable connected.



Try using various functions

Troubleshooting

If an error message appears

Error message	Meaning/Solutions
Cannot delete a protected file.	<ul style="list-style-type: none"> To delete a protected file, cancel the protection on your digital camera or computer.
Memory card is protected. Remove protection then try again.	<ul style="list-style-type: none"> The memory card is write-protected. Slide the write-protect switch to the enable position. (Digital Photo Frame Handbook, page 51)
Error reading the Memory Stick. / Error reading the SD Memory Card. /Error reading the External Device. /Error reading the internal memory.	<ul style="list-style-type: none"> For a memory card: An error has occurred. Check that the memory card is inserted correctly. If this error message is displayed frequently, check the status of the memory card with a device other than the photo frame.
Write error on the Memory Stick. / Write error on the SD Memory Card. /Write error in the External Device. /Write error on the internal memory.	<ul style="list-style-type: none"> For an external device: The external device may be write-protected. Cancel the write-protection setting for the device you are using. For the internal memory: Initialize the internal memory. <p>Note When you initialize the internal memory, please note that all the image files imported to the internal memory are deleted.</p>
Memory card format not supported.	<ul style="list-style-type: none"> For a memory card, use your digital camera or other device to format the memory card. Use the photo frame to initialize the internal memory. <p>Note When you initialize the memory card, all the files on the memory card will be deleted.</p>
Incompatible USB device. Check device's USB settings.	<ul style="list-style-type: none"> Connect a device with support for mass storage. If the USB setting of your device is incorrect, set the mass storage mode in the USB setting.



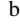
If trouble occurs

Symptom	Check item	Cause/Solutions
The power is not turned on.	<ul style="list-style-type: none"> Is the plug of the AC adaptor connected correctly? Is the built-in battery pack out of charge? 	<ul style="list-style-type: none"> → Connect the AC adaptor correctly (page 13).
Some images are not displayed.	<ul style="list-style-type: none"> Are the images displayed in the index view? Does the mark displayed below appear in the index view? 	<ul style="list-style-type: none"> → If the image is displayed in the index view but cannot be displayed as single image, the image file may be damaged even though its thumbnail preview data is fine. → If a mark is displayed, the thumbnail data or image itself cannot be opened. → A file that is not compatible with DCF may not be displayed with the photo frame, even if it can be displayed with a computer.
	<ul style="list-style-type: none"> Are there more than 4,999 images in the internal memory, external memory or memory card? 	<ul style="list-style-type: none"> → The photo frame can play, save, delete, or otherwise handle up to 4,999 image files.
	<ul style="list-style-type: none"> Did you rename the file with a computer or other device? 	<ul style="list-style-type: none"> → If you named or renamed the file on your computer and the file name includes characters other than alphanumeric characters, the image may not be able to be displayed on the photo frame.
	<ul style="list-style-type: none"> Is there a folder with more than 8 levels in its hierarchy on the memory card or in the external device? 	<ul style="list-style-type: none"> → The photo frame cannot display images saved in a folder that is more than 8 levels deep.
A video file is not played.	<ul style="list-style-type: none"> Does the mark displayed below appear in the index or single view display? 	<ul style="list-style-type: none"> → If the mark shown on the left is displayed, the video file may not supported by the photo frame. For video files that cannot be played, see “Playing a video file” (page 19).
Fast forward/backward playback is not available.	-	<ul style="list-style-type: none"> → Fast forward/backward playback of some video files may not be available with the photo frame.

Troubleshooting

Continued

31 GB

Symptom	Check item	Cause/Solutions
Cannot save an image.	<ul style="list-style-type: none"> Did you save images from a computer to the internal memory without making a folder in the internal memory? 	<ul style="list-style-type: none"> If you do not make a folder, you can only save up to 512 images. In addition, the number of images may be reduced depending on the file name length or character type. When you save images in the internal memory from a computer, be sure to make a folder in the internal memory and save the images in this folder.
Cannot delete an image.	<ul style="list-style-type: none"> Is the memory card write-protected? Or is the write-protect switch locked? 	<ul style="list-style-type: none"> Use the device you are using to cancel write-protection and try deleting again. Slide the write-protect switch to the enable position.
	<ul style="list-style-type: none"> Is this image protected? 	<ul style="list-style-type: none"> Check the image information from the single view mode. (page 18) An image with a  mark is set to "Read Only". You cannot delete it on the photo frame.
Nothing happens even if you operate the photo frame.	—	<ul style="list-style-type: none"> Turn off the power then turn it on (page 13). Push the RESET switch with a thin object, such as a ballpoint pen. (page 9) <p>Note</p> <p>If you push the RESET switch while the photo frame is in operation, the data in its internal memory may be erased or the settings may be reset.</p>
Nothing happens even if you operate the remote control.	<ul style="list-style-type: none"> Is the battery inserted in the remote control properly? 	<ul style="list-style-type: none"> Replace the battery. (Digital Photo Frame Handbook, page 9) Insert a battery in the proper orientation. (Digital Photo Frame Handbook, page 9)
	—	<ul style="list-style-type: none"> Point the top end of the remote control towards the remote sensor on the photo frame. Remove any obstruction between the remote control and the remote sensor.
	<ul style="list-style-type: none"> Is there a protective sheet inserted? 	<ul style="list-style-type: none"> Remove the protective sheet. (page 11)
	<ul style="list-style-type: none"> Is the AC adaptor connected correctly? 	<ul style="list-style-type: none"> The  (standby) button on the remote control cannot be used when the photo frame is powered only by the built-in battery pack. Use the  (standby) button on the photo frame.

Symptom	Check item	Cause/Solutions
Cannot charge the built-in battery pack.	<ul style="list-style-type: none">Is the standby indicator lit?	→ If an internal temperature of the photo frame rises owing to direct sunlight, etc., battery charging becomes disabled. In such a case, the standby indicator does not light, but this is not a malfunction of the photo frame.

Additional information

Precautions

Installation

- Avoid placing the photo frame in a location subject to:
 - vibration
 - humidity
 - excessive dust
 - direct sunlight
 - extremely high or low temperatures
- Do not use electrical equipment near the photo frame. The photo frame will not work properly in electromagnetic fields.
- Do not place heavy objects on the photo frame.

On the AC adaptor

- The set is not disconnected from the AC power source (mains) as long as it is connected to the wall outlet, even if the set itself has been turned off.
- Be sure to use the AC adaptor supplied with the photo frame. Do not use other AC adaptors, as this may cause a malfunction.
- Do not use the supplied AC adaptor for other devices.
- Do not use an electrical transformer (travel converter), as this may cause overheating or a malfunction.
- In case the cord of the AC adaptor is damaged, do not use it any longer, as this may be dangerous.

On moisture condensation

If the photo frame is brought directly from a cold location to a warm location or placed in an extremely warm or humid room, moisture may condense inside the unit. In such cases the photo frame will probably not work properly and may even develop a fault if you persist in using it. If moisture condensation occurs, unplug the AC adaptor of the photo frame and do not use the photo frame for at least one hour.

On transport

When you transport the photo frame, remove the memory card, external devices, AC adaptor, and connected cables from the photo frame and put the photo frame and its peripherals in the original box with the protective packaging.

If you no longer have the original box and packing parts, use similar packing material so that the photo frame will not be damaged while being transported.

Cleaning

Clean the photo frame with a soft dry cloth. Do not use any type of solvent, such as alcohol or benzene, which may damage the finish.

Restrictions on duplication

TV programs, films, video tapes, portraits of other people, or other materials may be copyrighted. Unauthorized use of such materials may infringe the provisions of the copyright law.

Disposing of the photo frame

Even if you perform [Format internal memory], the data in the internal memory may not be erased completely. When you dispose of the photo frame, consult with your Sony dealer or Sony service facilities.

Specifications

■ Photo frame

LCD screen

- LCD panel
20.3 cm/8 inches, TFT active matrix
- Total number of dots:
1,440,000 dots
(800 × 3 (RGB) × 600) dots

Effective display area

- Display aspect ratio
4:3
- LCD screen area:
20.0 cm / 7.9 inches
- Total number of dots:
1,398,897 dots
(789 × 3 (RGB) × 591) dots

LCD backlight life

- 20,000 hours
(before brightness of the backlight is reduced to half)

Input/Output connectors

- USB connector (Type mini B, Hi-Speed USB)
- USB connector (USB memory)
- Slots
“Memory Stick PRO” (Standard/Duo)/SD memory card/MMC

Compatible image file formats

- Photo:
 - JPEG: DCF 2.0 compatible, Exif 2.21 compatible, JFIF^{*1}
 - TIFF: Exif 2.21 compatible
 - BMP: 1, 4, 8, 16, 24, 32 bit Windows format
 - RAW (preview only^{*2}): SRF, SR2, ARW (2.2 or lower version)
(Some image file formats are not compatible.)
- Video: MotionJPEG^{*3}
 - Maximum resolution: 726 dots × 576 dots
 - Audio compression format: LPCM/ADPCM

- Maximum bit rate: 12 Mbps
- Maximum frame rate: 30 fps (640 × 480) / 25 fps (726 × 576)
- Music: MP3^{*3}
 - Sampling frequency: 32/44.1/48 kHz
 - Bit rate: 32 kbps to 320 kbps

Maximum number of pixels that can be displayed

8,000 (H) dots × 6,000 (V) dots^{*4}

File system

FAT12/16/32

Image file name

DCF format, 256 characters within 8th hierarchy

Maximum number of files that can be handled

4,999 files for the internal memory or for a memory card

Internal memory capacity^{*5}

2 GB
(Approx. 4,000 images^{*6} can be saved.)

Power requirements

DC IN jack, DC 12V

Power consumption

at the maximum load: 16.5 W
normal mode^{*}: 5.5 W

* The definition of the normal mode is a status which allows the performance of a slideshow using images stored in the internal memory with the default settings without inserting a memory card or connecting an external device.

Operating temperature

5 °C to 35 °C (41 °F to 95 °F)

Dimensions (width/height/depth)

[With the stand extended]
Approx. 246 mm × 179 mm × 123.2 mm
(9 ³/₄ × 7 ¹/₈ × 4 ⁷/₈) inches
[Without the stand extended]
Approx. 246 mm × 179 mm × 23 mm
(9 ³/₄ × 7 ¹/₈ × ¹⁵/₁₆) inches

Mass

approx. 742 g (1 lb 10 oz)
(Excluding the AC adaptor)

Additional information

Continued

35 GB

Included accessories

See "Checking included items" on page 8.

■ AC adaptor

Power requirements

~ 100 V to 240 V, 50 Hz/60 Hz,

0.4 A

Rated output voltage

== 12 V, 1.5 A

Dimensions (depth/width/height)

Approx. 64 mm × 50 mm × 30 mm

(2 ⁵/₈ × 2 × 1 ³/₁₆) inches

(excluding the protruding parts)

Mass

Approx. 110 g (3 ⁷/₈ oz)

See the label of AC adaptor for more details.

Design and specifications are subject to change without notice.

*1: Baseline JPEG with 4:4:4, 4:2:2, or 4:2:0 format

*2: RAW files of a Sony α camera are displayed as thumbnail preview.

*3: Some files that satisfy the requirements mentioned may not be played properly, depending on the performance or status of a memory card or USB external device you are using.

*4: 17 bits or more are required both vertically and horizontally. An image with an aspect ratio of 20:1 or more may not be displayed properly. Even if the aspect ratio is less than 20:1, display problem may occur in thumbnails, slideshow or other occasions.

*5: When measuring media capacity, 1 GB equals 1,000,000,000 bytes, a portion of which is used for data management and/or application files. The capacity that a user can use is approximately 1.9 GB.




*6: Approximate number is shown when the images taken by 2,000,000 pixels equivalent camera are saved. The value may vary depending on the shooting condition.

Customer support home page

The latest support information is available at the following home page address:

<http://www.sony.net/>

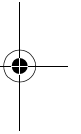
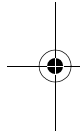
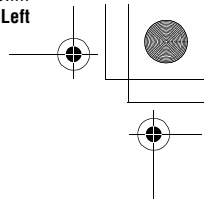
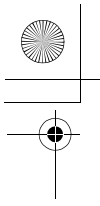
On trademarks and copyrights

- **S-Frame**, Cyber-shot, α , , "Memory Stick", **MEMORY STICK**, "Memory Stick Duo", **MEMORY STICK DUO**, "MagicGate Memory Stick", "Memory Stick PRO", **MEMORY STICK PRO**, "Memory Stick PRO Duo", **MEMORY STICK PRO DUO**, "Memory Stick PRO-HG Duo", **MEMORY STICK PRO-HG DUO**, "Memory Stick Micro", **MEMORY STICK MICRO**, **M2**, "Memory Stick-ROM", **MEMORY STICK-ROM**, "MagicGate", and **MAGICGATE** are trademarks or registered trademarks of Sony Corporation.
- Microsoft, Windows, and Windows Vista are registered trademarks of Microsoft Corporation in the United States and/or other countries.
- Macintosh and Mac OS are registered trademarks of Apple Inc.. in the United States and/or other countries.
- The SD logo is a trademark. 
- The SDHC logo is a trademark. 
- Contains iType™ and fonts from Monotype Imaging Inc.
iType™ is a trademark of Monotype Imaging Inc.
- This software is based in part on the work of the Independent JPEG Group.
- Libtiff
Copyright © 1988 - 1997 Sam Leffler
Copyright © 1991 - 1997 Silicon Graphics, Inc.
- All other companies and product names mentioned herein may be the trademarks or registered trademarks of their respective companies. Furthermore, "TM" and "®" are not mentioned in each case in this manual.

memo

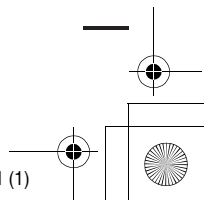
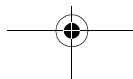
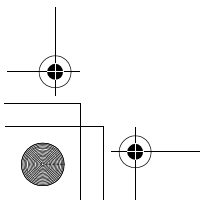
memo

memo



Printed using VOC (Volatile Organic
Compound)-free vegetable oil based ink.

Sony Corporation Printed in China



Free Manuals Download Website

<http://myh66.com>

<http://usermanuals.us>

<http://www.somanuals.com>

<http://www.4manuals.cc>

<http://www.manual-lib.com>

<http://www.404manual.com>

<http://www.luxmanual.com>

<http://aubethermostatmanual.com>

Golf course search by state

<http://golfingnear.com>

Email search by domain

<http://emailbydomain.com>

Auto manuals search

<http://auto.somanuals.com>

TV manuals search

<http://tv.somanuals.com>