

# ***Network Player Management Software***

---

## **Operating Instructions**

Before operating the software, please read this manual thoroughly and retain it for future reference.

**BZNP-100** Version 3.00 and Later

©2003 Sony Corporation

## Overview of This Manual

The operating instructions provide instructions on operating the BZNP-100 Network Player Management Software.

The BZNP-100 software is designed to distribute and manage audio and visual content, including commercial videos played in public places or educational and training videos for use in a company. This content is sent to Sony NSP-100 Network Players via a network.

The operating instructions contain the same information as the online help. Both provide complete information on BZNP-100 operations. Press the F1 key to view help information on the functions of the window or dialog box currently having the focus. To see information on the operations related to the window/dialog box, click “Related Topics” link displayed on the right of the topic title.

Click the Help Topics button in the Help window to see the table of contents.

## Notations Used in This Manual

Menu commands and labeled buttons that appear on the screen are indicated as [command name] and [button name].

Example: [Edit], [Material Management]

## Trademark Notice

- Microsoft, Windows, Windows XP and DirectShow are registered trademarks of Microsoft Corporation in the United States and other countries.
- i.LINK is a trademark of Sony Corporation.
- Other system names, product names and company names appearing in this manual are trademarks or registered trademarks of their respective holders. In this manual such names are not indicated by ® or ™ symbols.

## NOTICE TO USERS

Program © 2003 Sony Corporation.

Documentation © 2003 Sony Corporation.

All rights reserved. This manual or the software described herein, in whole or in part, may not be reproduced, translated or reduced to any machine readable form without prior written approval from Sony Corporation.

SONY CORPORATION PROVIDES NO WARRANTY WITH REGARD TO THIS MANUAL, THE SOFTWARE OR OTHER INFORMATION CONTAINED HEREIN AND HEREBY EXPRESSLY DISCLAIMS ANY IMPLIED WARRANTIES OF MERCHANTABILITY OR FITNESS FOR ANY PARTICULAR PURPOSE WITH REGARD TO THIS MANUAL, THE SOFTWARE OR SUCH OTHER INFORMATION. IN NO EVENT SHALL SONY CORPORATION BE LIABLE FOR ANY INCIDENTAL, CONSEQUENTIAL OR SPECIAL DAMAGES, WHETHER BASED ON TORT, CONTRACT, OR OTHERWISE, ARISING OUT OF OR IN CONNECTION WITH THIS MANUAL, THE SOFTWARE OR OTHER INFORMATION CONTAINED HEREIN OR THE USE THEREOF.

Sony Corporation reserves the right to make any modification to this manual or the information contained herein at any time without notice.

The software described herein may also be governed by the terms of a separate user license agreement.

Data used to create video, graphics, and text material for transmission from the network players may be copyrighted.

Unauthorized distribution and/or playout of such material may be contrary to the provisions of the copyright laws.

Also, the system allows you to use the fonts installed on the PC to create text material. Such fonts are copyrighted. Authorization or right of transmission is required to use them for playout.

## Table of Contents

Table of Contents .....	3
<hr/>	
<b>Overview .....</b>	<b>5</b>
System Overview .....	5
Operation Flowchart .....	8
Major Operation Windows .....	9
Main Menu (Presentation Application) .....	9
Main Menu (Scheduling Application) .....	11
Calendar Operations (Scheduling Application) .....	13
Material Management Window - Video Tab .....	14
Material Management Window - Graphics Tab .....	16
Material Management Window - Text Tab .....	18
Material Management Window - Control Tab .....	20
Material Management Window - Playlist Tab .....	22
Edit Playlist Window .....	24
Edit Playlist (Module List) Window .....	27
<hr/>	
<b>Routine Operations .....</b>	<b>29</b>
Material Preparations .....	29
Video Material Preparation .....	29
Registering Material Data Prior to Converting a Video File (Video Material Preparation) .....	30
Capturing Video (Video Material Preparation) .....	31
Graphics Material Preparation .....	34
Registering Material Data Prior to Converting a Graphics File (Graphics Material Preparation) .....	35
File Used for Graphics Material .....	36
Text Material Preparation - Character Text .....	38
Text Material Preparation - Bitmap Text .....	40
Device Control Command Preparation .....	42
Checking Materials (Preview) .....	44
Deleting Materials and Playlists (Automatic Deletion Function and Manual Deletion) .....	45
Importing Materials and Playlist Modules Created with the BZNP-A1 .....	47
Playlist Preparations .....	49
What is a Playlist? .....	49
Creating a New Playlist .....	52
Creating a New Playlist by Listing Playlist Modules .....	54
Editing or Deleting a Playlist .....	56
Checking a Playlist .....	58
Editing Functions in the Edit Playlist Window .....	59
Adding Video, Graphics, and Text Events to a Playlist .....	59
Including an External Device Control Event in a Playlist .....	61
Moving and Deleting Events .....	62
Inserting a Playlist Module .....	62
Inserting a Break Event (Presentation Application) .....	64
Changing the Start Time of an Event (Scheduling Application) .....	64
Positioning Video and/or Text .....	65
Editing Functions in the Edit Playlist (Module List) Window .....	67

Transfer to the Network Players .....	68
Sending Playlists to Network Players .....	68
Sending Materials to Network Players .....	69
Checking Transfer Status .....	70
Playout.....	71
Normal Playout .....	71
Urgent Playout.....	73
Checking of the Network Players.....	75
Checking the Network Player Status.....	75
Checking the Playout Log.....	76
Finishing the Operation.....	78
<hr/>	
<b>System Setup.....</b>	<b>79</b>
Setting Up the Software.....	79
Setting Up the NSP-100 Network Players .....	81
Editing Control Files Used on Network Players .....	82
Changing the Standby Screen and Playlist Loading Screen of the Network Players ...	84
Specifying the Special Playlists of the Network Players .....	85
Setting Up Network Player Groups.....	86
NSP-100 Maintenance Commands .....	88
<hr/>	
<b>Windows and Dialog Boxes.....</b>	<b>90</b>
Setup Dialog Box .....	90
Network Setup Dialog Box.....	92
NSP-100 Setup Dialog Box .....	93
Group Setup Dialog Box.....	97
Edit Group Dialog Box .....	98
NSP-100 Settings Dialog Box.....	99
Group Settings Dialog Box .....	100
Transfer Status Window .....	101
Transfer Results Window.....	102
Convert Material Window.....	103
Parameter Settings Dialog Box.....	104
Capture Window .....	105
Edit Text Dialog Box .....	107
Properties Dialog Box.....	109
Font Color Setting Dialog Box .....	111
Edit Control (External Device/NSP-100) Dialog Box .....	112
View Playlist Window.....	113
Properties Dialog Box.....	114
Display Setup Dialog Box .....	116
Playout Log Window .....	118
Detail Screen Window .....	119
Delete Date Settings Dialog Box .....	120
Change Start Time Dialog Box .....	121
Password for NSP-100 Setup Dialog Box .....	122
NSP-100 Status Window .....	123
Preview Window .....	124
Import Materials Dialog Box.....	125

### System Overview

The Sony BZNP-100 Network Player Management Software is designed to manage systems that send audio and visual content, such as commercial videos played in public places or educational and training videos in a company, to Sony NSP-100 Network Players (referred to as "network players") via a network, then plays them.

The system uses video, graphics, and text materials. Unlike other authoring software, it manages video, graphics, and text materials separately, rather than combining them to make a piece of video material, and sends them together with a playlist.

This feature allows you to quickly replace some pieces of graphics and text materials that are small in data size, or to modify the position of video and/or text on the graphics material or produce new combinations of the materials simply by sending a new playlist. The system enables you to fully utilize your audio and visual content for flexible playback.

There are the following software products:

- BZNP-100  
manages up to 100 network players.
- BZNP-100LE  
is supplied with the NSP-100, and is a subset of this software which manages only one network player. There are also some "limitations for BZNP-100LE" described below.

The BZNP-100 software includes the following two applications so that you can select one according to your needs:

The Setup dialog box is used to switch between these two applications.

- Presentation Application  
Used for presentations. This application creates and manages the playlists whose playback is controlled by the remote controller of the network player. Externally triggered playback starting and automatic starting upon NSP-100 power-on are also supported.
- Scheduling Application (Not included in the BZNP-100LE)  
Used for automatic playback. This application creates and manages the playlists whose playback is carried out automatically at a specified date and time.

Either application can handle the following four kinds of materials:

- Video  
AVI and MPEG2 files, and Sony VSR-2000/2000A video files should be converted to the NSP format, which is the only format the network players can play.
- Graphics  
Bitmap and JPEG files should be converted to the NSP format, which is the only format the network players can display.
- Text  
Data to be superimposed on a video or graphics item should be created as text. The system enables you to use a bitmap file to be superimposed as a piece of "text," too.

- Control commands  
Commands that specify control of the PDP (Plasma Display Panel) power switch or GPI (General Purpose Interface) pulses for devices connected to the network players are created and used as materials.  
Commands for NSP-100 control, such as to adjust volume, are also created and managed. (They are only used in an urgent playout procedure, however, and cannot be inserted in the playlists.)

You can create a "playlist" that lists the playout order of these materials, and send it to the network players. Then, each of the network players plays the materials out according to the playlist you created.

The following list shows the main operations that can be carried out using this software.

- Set up of the system.
- Prepare materials  
Create materials using the BZNP-100
  - Capture of video from a VCR or a camcorder connected with an i.LINK (IEEE 1394) cable and creation of AVI files.
  - Conversion of video and graphics files into NSP format.
  - Creation of files for subtitles, by typing in text and specifying how to display it. Or, import materials and playlist modules created by the BZNP-A1 authoring software.
- Creation of device control commands to control devices connected to the network player, such as a PDP.
- Creation of playlists.
- Sending of playlists to the network players. (Materials that are not stored on the destination network player are automatically sent with the playlist.)
- Checking the status of playlist transfer and each network player in the system.
- Retrieval of playout logs from the network players, and check the playout results.

#### Hint

During operation, pressing the F1 key on the keyboard displays information (help) related to the window/dialog box currently holding the focus.

#### Limitations of the BZNP-100LE

The BZNP-100LE is supplied with the NSP-100, and is a subset of this software. It has the following limitations:

- It manages only one network player.
- The Scheduling Application is not available.  
As the scheduled playlists are not supported, the automatic scheduled playlist sending function is not available.
- Video capturing is not available.
- Importing of materials is not available. (Materials and playlist modules created by the BZNP-A1 cannot be used.)
- Video previewing on a PC is not available.
- Fonts installed on a PC cannot be used for text material, therefore, only the font installed on the NSP-100 can be used, and multicolor text and specification of font

size are not available.

Bitmap text is not available, either.

- The Edit Playlist (Module List) window in which you can edit a playlist only by using playlist modules is not available.
- The automatic playlist resending function in case of a transfer error is disabled.

---

## Operation Flowchart

### Upon System Installation

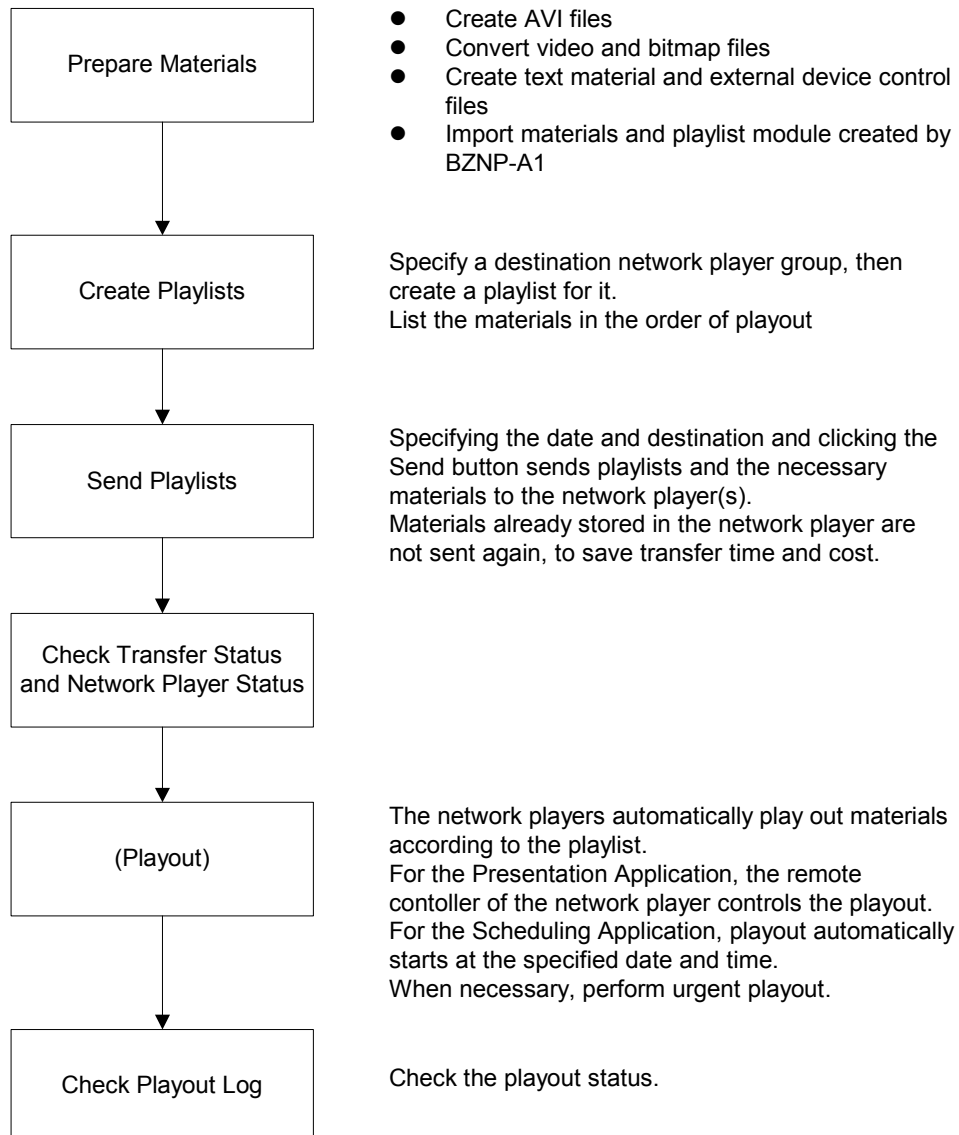
Make the network settings, such as the IP address, for each network player by using the remote controller.

Then, open the Setup, Group Setup, and NSP-100 Setup dialog boxes, one by one, and specify the required items.

### During Normal Operation

The main operations are: material preparation, playlist editing, playlist/material transfer, and log checking.

The following figure shows an example of the normal operation of this system to play commercial videos played in the public places or educational and training videos in a company.





---

## Major Operation Windows

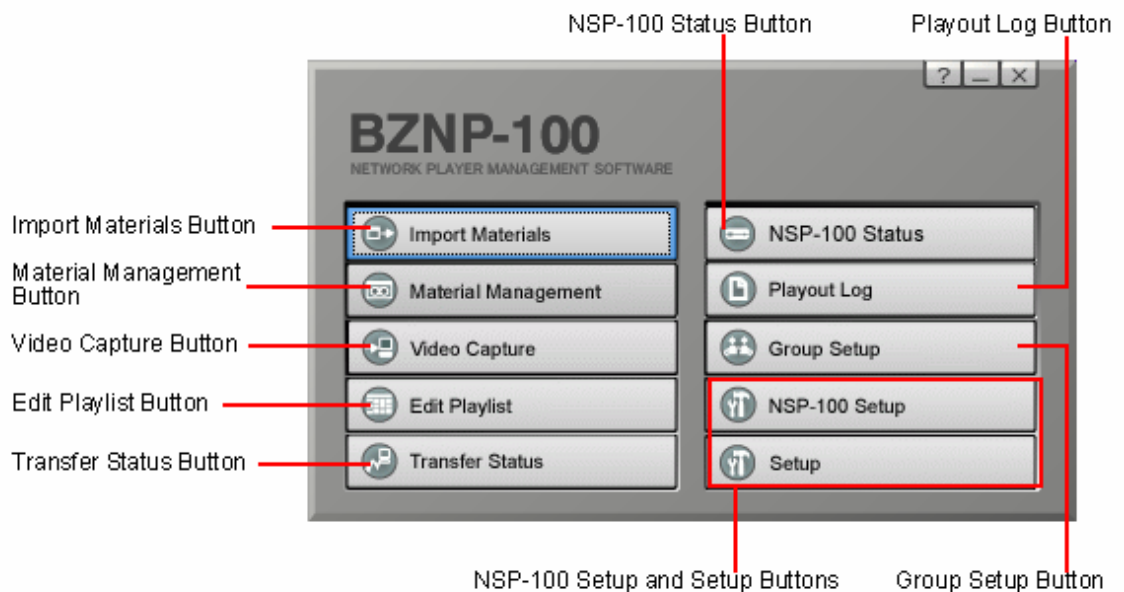
### Main Menu (Presentation Application)

#### Hint

To see information on the operation, press the F1 key on the keyboard. Then, information (help) related to the window/dialog box currently holding the focus appears. Clicking "Related Topics" to the right of the help title shows the procedure and other information related to the displayed window/dialog box. Click [Help Topics] on the menu bar of the help window for information on the entire system.

The following window is the main menu of the Sony BZNP-100 Network Player Management Software when it is utilized as the Presentation Application. This menu appears upon starting the software to launch its functions.

The following example uses the main menu of the BZNP-100, but that of the BZNP-100LE is the same, the model name displayed being the only difference.



#### Import Materials Button

Opens the Import Materials dialog box to import materials and playlist modules created using the BZNP-A1 authoring software.

#### Material Management Button

Opens the Material Management window where the four types of material, video, graphics, text and device control commands, and the playlists are listed. This window also has functions for registering and converting video and graphics files, entering text, and for creating device control commands.

**Video Capture Button**

Opens the Capture window to create AVI files from the video of a VCR or camcorder connected to the PC with an i.LINK (IEEE 1394) cable.

**Edit Playlist Button**

Opens the Edit Playlist window to create and/or edit playlists.

**Transfer Status Button**

Opens the Transfer Status window to check the status of playlist/material being transferred to the network players.

**NSP-100 Status Button**

Opens the NSP-100 Status window to display the status of each network player in the selected group.

**Playout Log Button**

Opens the Playout Log window to obtain playout logs from the network players to check them.

**Group Setup Button**

Opens the dialog box used to create network player groups. You can create network player groups and send playlists and materials to the groups, rather than to each network player individually.

**NSP-100 Setup, Setup Buttons**

Opens the dialog boxes used to set up the network players and this software, respectively.

## Main Menu (Scheduling Application)

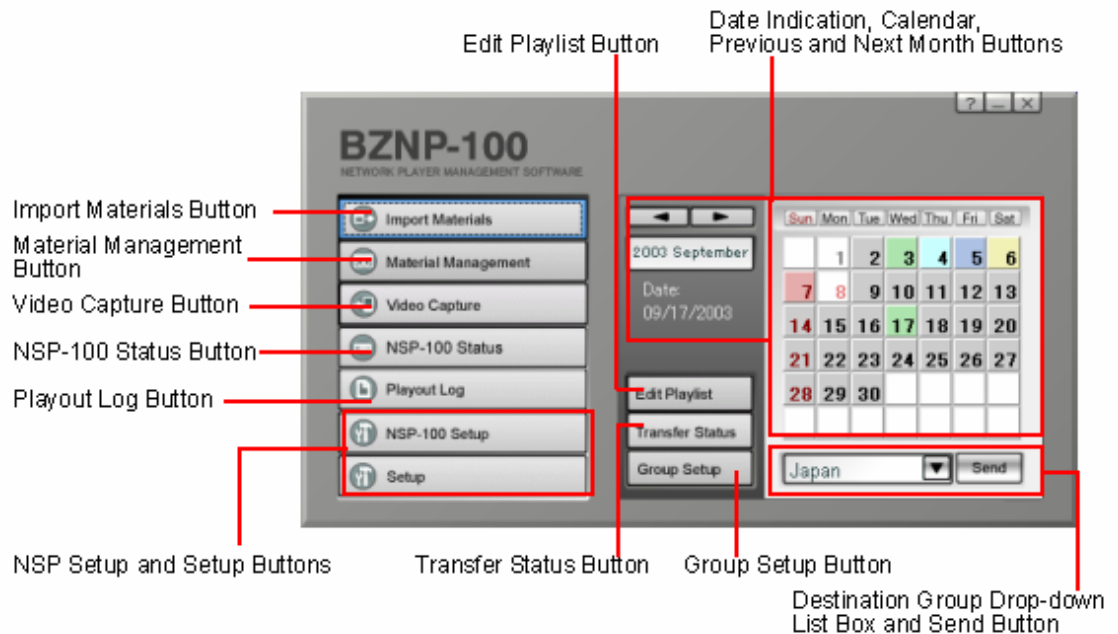
### Hint

To see information on the operation, press the F1 key on the keyboard. Then, information (help) related to the window/dialog box currently holding the focus appears. Clicking "Related Topics" to the right of the help title shows the procedure and other information related to the displayed window/dialog box. Click [Help Topics] on the menu bar of the help window for information on the entire system.

The following window is the main menu of the Sony BZNP-100 Network Player Management Software when it is utilized as the Scheduling Application. This menu appears upon starting the software to launch its functions.

### Note

The following example uses the main menu of the BZNP-100. The BZNP-100LE does not have the Scheduling Application.



### Import Materials Button

Opens the Import Materials dialog box to import the materials and playlist modules created by the BZNP-A1 authoring software.

### Material Management Button

Opens the Material Management window where the four types of material, video, graphics, text and device control commands, and the playlists are listed. This window also has functions for registering and converting video and graphics files, entering text, and for creating device control commands.

**Video Capture Button**

Opens the Capture window to create AVI files from the video of a VCR or camcorder connected to the PC with an i.LINK (IEEE 1394) cable.

**NSP-100 Status Button**

Opens the NSP-100 Status window to display the status of each network player in the selected group.

**Playout Log Button**

Opens the Playout Log window to obtain playout logs from the network players to check them.

**NSP-100 Setup, Setup Buttons**

Opens the dialog boxes used to set up the network players and the software, respectively.

**Edit Playlist Button**

Opens the Edit Playlist window to create and/or edit playlists.

**Transfer Status Button**

Opens the Transfer Status window to check the status of playlist/material being transferred to the network players.

**Group Setup Button**

Opens the dialog box used to create network player groups. You can create network player groups and send playlists and materials to the groups, rather than to each network player individually.

**Date Indication, Calendar, Previous and Next Month Buttons**

Today's date is indicated on the main menu, but you can change the month of the calendar displayed by clicking the previous and next month buttons (the buttons with right and left triangle arrows).

**Hint**

Clicking the today's date indicator quickly returns the calendar display to the one for the current month.

You can send playlists and the necessary materials simply by selecting a day on the calendar and a destination group from the drop-down list box, then clicking the Send button, provided the materials and playlists are ready.

The colors used for the calendar express the following meanings.

Note that the colors will not be displayed correctly if you sent the video, graphics and text materials from the Material Management window. You need to send the playlists from this window, the Material Management or Edit Playlist window.

<b>Background</b>	<b>Text</b>	<b>Meaning</b>
White	Gray or brown	Non-playout day.
Gray	Black or red	Playlist not yet created.
Green	Black or red	Playlist being edited or already edited.
Light Blue	Black or red	Playlists and materials are being sent.
Blue	Black or red	Playlists and materials successfully sent.
Yellow	Black or red	Necessary materials not yet sent.
Red	Black or red	A transfer error occurred.

### **Destination Group Drop-down List Box and Send Button**

Selects one of the registered network player groups.

You can send playlists and the necessary materials simply by selecting a day on the calendar and a destination group here, then clicking the Send button, provided the materials and playlists are ready.

The drop-down list box is also linked with the Edit Playlist button. Selecting a group then clicking the button enables you to proceed to operation of the selected network player group.

## **Calendar Operations (Scheduling Application)**

There is a calendar displayed on the main menu of the Scheduling Application, showing status of playlist creation and transfer.

The background color of each date expresses the status of the playlists and related materials for that day. The text color also has meaning. The color is changed by the following operations:

### **Defining Non-Playout Days**

It is helpful to see whether a certain day is a non-playout day or its playlist is not yet ready, and therefore has to be created.

- 1** Right-click the date to be designated a non-playout day on the calendar of the main menu.
- 2** Click [Non-Playout Day] or [Non-Playout Holiday] on the menu.  
A non-playout day appears in gray or brown. Its background color is white.  
To return a non-playout day to a playout day, right-click the date, then click [Playout Day].  
Click [Playout Holiday] in the same way to change a playout day to a non-playout day.

#### **Note**

Note that the playout period specified for each playlist overrides the non-playout day settings.

When the playout period of a playlist is from September 1, 2003 to September 30, 2003, for example, it will be played everyday during the period, even if there is a non-playout day set for September 15.

To keep a non-playout day, in such a case, create two identical playlists. Set the playout period for one from September 1, 2003 to September 14, 2003, and September 16, 2003 to September 30, 2003 for the other.

### **Switching the Color of the Days of the Week**

The dates of weekdays (from Mondays to Saturdays) appear in black, and those of Sundays appear in red, by default.

The system allows you to change the color.

- 1** To change the color of a day of the week, right-click the desired day of the week.  
To change the color of a specific date, right-click the date.

#### **Hint**

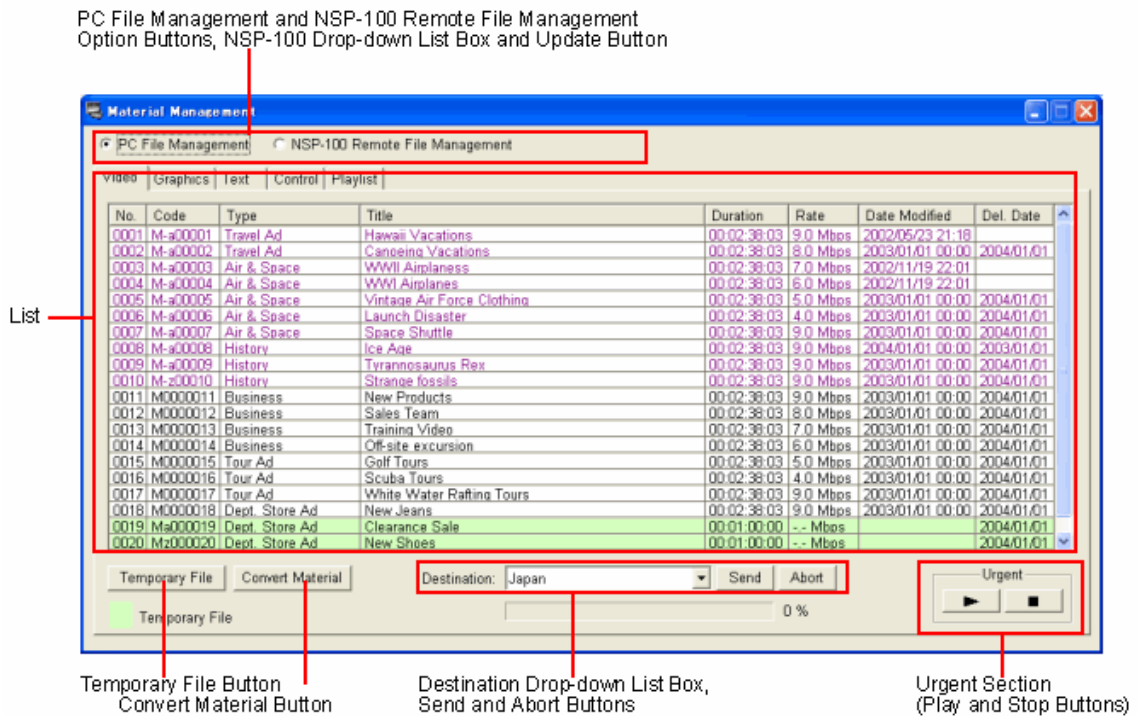
Specify the color of the day of the week first, then specify the color of the specific holidays.

- 2** Click the desired item on the menu.  
A workday appears in black or gray where a holiday appears in red or brown.

## Material Management Window - Video Tab

The Material Management window is used to manage the four types of materials, and the playlists.

The Video tab lists registered video materials. A white background color indicates that the video file has already been converted into the NSP format, while a green background color indicates that the video material data has been registered but has not yet been converted.



### PC File Management and NSP-100 Remote File Management Option Buttons, NSP-100 Drop-down List Box and Update Button

Select either of the two option buttons, depending on the place where the desired video materials are stored.

Normally, the PC File Management option button is selected. Select the NSP-100 Remote File Management option button, however, to check or delete materials stored on a network player. In such a case, select the desired network player from the NSP-100 drop-down list box. The Update button is used to update the list of materials stored on the selected network player.

### List, Same Sorting as NSP-100 Button

The list displays the video material stored in the selected location. Temporary pieces of material are listed at the bottom.

You can sort (ascending order) the material by clicking the title of the desired column. When the NSP-100 Remote File Management option button is selected, clicking the Same Sorting as NSP-100 button arranges the material in the order shown on the NSP-100.

To modify the type and/or title of a piece of material, double click the desired column, modify the text, then press the Enter key. To delete the material, check the picture (preview on the PC), specify or clear the date of deletion, right-click the desired piece of material and select the desired command from the menu.

#### **Note**

When the material stored on a network player is listed, note that the video material displayed in red, if any, cannot be used for playout because the required file(s) of the material is/are missing.

Delete the piece(s) of material displayed in red, then send the playlist again to resend such material.

#### **Hint**

If an event type or title is longer than the width of the list, and thus it is not fully displayed, move the mouse pointer over the code, type, or title. The entire text pops up.

#### **Temporary File Button**

Adds a data record for a piece of new material at the bottom of the list. It is used to register material information to create a playlist before obtaining the video file. When the video file becomes available, you can assign the file to the piece of material data when conversion takes place.

#### **Convert Material Button**

Opens the Convert Material window to convert AVI, MPEG2, and VSR-2000/2000A video files into NSP format.

#### **Destination Drop-down List Box, Send and Abort Buttons**

These are used to specify the destination network player group and send the selected material(s). The Abort button cancels material transfer. These controls appear only when the PC File Management option button is selected.

#### **Urgent Section (Play and Stop Buttons)**

When the PC File Management option button is selected, the play button is used for urgent playout in which the selected piece of material is sent to a specified network player group, and playout starts as soon as each network player receives the material. When the NSP-100 Remote File Management option button is selected, the play button is used to play a piece of material on the selected network player.

In either case, the play and stop buttons control urgent playout currently being performed on the selected network player or the network players in the selected group.

#### **Note**

The urgent playout function interrupts playout currently being carried out on the network player. Ongoing playout stops, and the selected piece of material will be played.

Also, scheduled playout will not start during urgent playout. Check the network player status in the NSP-100 Status window before starting urgent playout, and click the stop button at the end.

## Material Management Window - Graphics Tab

The Material Management window is used to manage the four types of materials, and the playlists.

The Graphics tab lists registered graphics materials. A white background color indicates that the bitmap file has already been converted into the NSP format, while a green background color indicates that the graphics material data has been registered but has not yet been converted.

### **PC File Management and NSP-100 Remote File Management Option Buttons, NSP-100 Drop-down List Box and Update Button**

Select either of the two option buttons, depending on the place where the desired graphics materials are stored.

Normally, the PC File Management option button is selected. Select the NSP-100 Remote File Management option button, however, to check (preview on PC) or delete materials stored on a network player. In such a case, select the desired network player from the NSP-100 drop-down list box. The Update button is used to update the list of materials stored on the selected network player.

### **List, Same Sorting as NSP-100 Button**

The list displays the graphics material stored in the selected location. Temporary pieces of material are listed at the bottom.

You can sort (ascending order) the material by clicking the title of the desired column. When the NSP-100 Remote File Management option button is selected, clicking the Same Sorting as NSP-100 button arranges the material in the order shown on the NSP-100.

To modify the type and/or title of a piece of material, double click the desired column, modify the text, then press the Enter key. To delete the material, view the picture, specify or clear the date of deletion, right-click the desired piece of material and select the desired command from the menu.

To change the standby screen, power off the network players after selecting the command, then power them on again.

#### **Hint**

If an event type or title is longer than the width of the list, and thus it is not fully displayed, move the mouse pointer over the code, type, or title. The entire text pops up.

### **Temporary File Button**

Adds a data record for a new piece of material at the bottom of the list. It is used to register material information to create a playlist before obtaining the graphics file. When the graphics file becomes available, you can assign the file to the piece of material data when conversion takes place.

### **Convert Material Button**

Opens the Convert Material window to convert bitmap and JPEG files into the NSP format.

### **Destination Drop-down List Box, Send and Abort Buttons**

These are used to specify the destination network player group and send the selected material(s). The Abort button cancels material transfer. These controls appear only when the PC File Management option button is selected.



### **Urgent Section (Play and Stop Buttons)**

When the PC File Management option button is selected, the play button is used for urgent playout in which the selected piece of material is sent to a specified network player group, and playout starts as soon as each network player receives the material. When the NSP-100 Remote File Management option button is selected, the play button is used to play a piece of material on the selected network player. In either case, the play and stop buttons control urgent playout currently being performed on the selected network player or the network players in the selected group.

#### **Note**

The urgent playout function interrupts playout currently being carried out on the network player. Ongoing playout stops, and the selected piece of material will be played. Also, scheduled playout will not start during urgent playout. Check the network player status in the NSP-100 Status window before starting urgent playout, and click the stop button at the end.

## Material Management Window - Text Tab

The Material Management window is used to manage the four types of materials, and the playlists.

The Text tab lists registered text materials.

### **PC File Management and NSP-100 Remote File Management Option Buttons, NSP-100 Drop-down List Box and Update Button**

Select either of the two option buttons, depending on the place where the desired text materials are stored.

Normally, the PC File Management option button is selected. Select the NSP-100 Remote File Management option button, however, to check or delete materials stored on a network player. In such a case, select the desired network player from the NSP-100 drop-down list box. The Update button is used to update the list of materials stored on the selected network player.

### **List**

Displays the text material stored in the selected location. Lines whose length (Len.) are not shown represent bitmap texts, that show bitmaps instead of text sentences. The Duration column indicates the estimated time to display the piece of text material (two seconds in the case of constant or blinking text).

You can sort (ascending order) the material by clicking the title of the desired column. New pieces of material are listed at the bottom.

To modify the type and/or title of a piece of material, double click the desired column, modify the text, then press the Enter key. To edit or delete the material, specify or clear the date of deletion, right-click the desired material and select the desired command from the menu.

#### **Hint**

If an event type or title is longer than the width of the list, and thus it is not fully displayed, move the mouse pointer over the code, type, or title. The entire text pops up.

### **New Button**

Opens the Edit Text dialog box to create a new piece of character text material.

### **Read Bitmap Button**

Opens the Open dialog box to create a new piece of bitmap text material.

#### **Hint**

The bitmap files that satisfy the following conditions will be converted to material having the same material codes as those of the original files. A piece of material that already has that material code will be overwritten.

- The file name (extension excluded) consists of eight characters, and the extension is "bmp."
- The first character of the file name is T.
- The third through the eighth characters (six digits) of the file name are numbers.

### **Destination Drop-down List Box, Send and Abort Buttons**

These are used to specify the destination network player group and send the selected material(s). The Abort button cancels material transfer. These controls appear only when the PC File Management option button is selected.

### **Urgent Section (Play, and Stop Buttons)**

When the PC File Management option button is selected, the play button is used for urgent playout in which the selected piece of material is sent to a specified network player group, and playout starts as soon as each network player receives the material. When the NSP-100 Remote File Management option button is selected, the play button is used to play a piece of material on the selected network player. In either case, the play and stop buttons control urgent playout currently being performed on the selected network player or the network players in the selected group.

#### **Note**

The urgent playout function interrupts playout currently being carried out on the network player. The selected text will be displayed on the piece of material that is being played, or the selected text will override the text that is being played, if any. Also, scheduled playout will not start during urgent playout. Check the network player status in the NSP-100 Status window before starting urgent playout, and click the stop button at the end.

## Material Management Window - Control Tab

The Material Management window is used to manage the four types of materials, and the playlists.

The Control tab lists registered control commands used for PDPs (Plasma Display Panels) or other devices connected to the network players, as well as control commands for the network players themselves.

Control commands for external devices are included in the events of a playlist to control external devices along with playout. The control commands for the network players are used in the urgent playout procedure, and are sent to the network players to be run there.

### List

Displays registered device control commands.

You can sort (ascending order) the device control commands by clicking the title of the desired column. New device control commands are listed at the bottom.

To modify the type and/or title of a command, double click the desired column, modify the text, then press the Enter key. To modify or delete a command, right-click the desired control command and select the desired command from the menu.

The BZNP-100 provides the following control commands for adjusting the audio volume of the network players. These commands cannot be inserted in the playlists.

To adjust audio volume, select the desired network player group with the Destination drop-down list box, select the command corresponding to the desired volume, then click the play button in the Urgent section.

Command Name	Function
D0NspAIH	Audio level: High
D0NspAIM	Audio level: Middle
D0NspAIL	Audio level: Low
D0NspAI0	Audio muting

### Hint

If an event type or title is longer than the width of the list, and thus it is not fully displayed, move the mouse pointer over the code, type, or title. The entire text pops up.

### New Button

Opens the Edit Control (External Device/NSP-100) dialog box to create a new device control command.

The BZNP-100 accepts up to 50 device control commands.

### Destination Drop-down List Box

Used to specify the destination network player group to which to send the selected device control command.

### Urgent Section (Play Button)

Used for urgent playout in which the selected device control command is sent to the specified network player group, where it will run on the network players.

### Note

The urgent playout function interrupts playout currently being carried out on a network player. Ongoing playout stops, and the selected control command will run on each network player.

Check the network player status in the NSP-100 Status window before starting urgent playout of the device control command.

## Material Management Window - Playlist Tab

The Material Management window is used to manage the four types of materials, and the playlists.

The Playlist tab lists registered playlists.

### Note

The system stores the playlists separately according to their destination network player groups. Selecting another network player group with the Destination drop-down list box switches the playlists displayed.

### PC File Management and NSP-100 Remote File Management Option Buttons, NSP-100 Drop-down List Box and Update Button

Select either of the two option buttons, depending on the place where the desired playlists are stored.

Normally, the PC File Management option button is selected. Select the NSP-100 Remote File Management option button, however, to check or delete playlists stored on a network player. In such a case, select the desired network player from the NSP-100 drop-down list box. The Update button is used to update information on the playlists stored on the selected network player.

### List, Same Sorting as NSP-100 Button

Displays the playlists stored in the selected location.

You can sort (ascending order) the playlists by clicking the title of the desired column. New playlists are listed at the bottom. When the NSP-100 Remote File Management option button is selected, clicking the Same Sorting as NSP-100 button arranges the playlists in the order shown on the NSP-100.

The item colors have the following meanings:

Color	Playlist Type	Description
Black	Normal playlist	-
Blue	Playlist module	Playlist parts to be inserted into other playlists. They do not have the start and end date/time, and delete date data, even in the case of the Scheduling Application.
Purple	Imported playlist module	Playlist modules created using the Sony BZNP-A1 authoring software. They cannot be edited.
Yellow-green	Power-on start playlist	Playlist which will automatically start when the network player is powered on.
Green	Play button start playlist	Playlist which can be started by pressing the play button of the network player's remote controller during standby.

When the PC File Management option button is selected, only playlists created for the network player group selected in the Destination drop-down list box appear.

To modify the type and/or title of a playlist, double click the desired column, modify the text, then press the Enter key. To view, edit, or delete the playlist, specify or clear the date of deletion (in the Presentation Application only), right-click the desired playlist and select the desired command from the menu.

**Hint**

If an event type or title is longer than the width of the list, and thus it is not fully displayed, move the mouse pointer over the code, type, or title. The entire text pops up.

**New Button**

Opens the Edit Playlist window to create a new playlist.

**New (Module List) Button**

Opens the Edit Playlist (Module List) window to create a new playlist using playlist modules.

**Destination Drop-down List Box, Send and Abort Buttons**

These are used to specify the destination network player group and send selected playlist(s). The Abort button cancels playlist transfer. These controls appear only when the PC File Management option button is selected.

**Urgent Section (Play and Stop Buttons)**

When the PC File Management option button is selected, the play button is used for urgent playout in which the selected playlist is sent to the specified network player group, and playout starts as soon as each network player receives the playlist and the necessary materials, if any.

When the NSP-100 Remote File Management option button is selected, the play button is used to play a playlist on the selected network player.

In either case, the play and stop buttons control urgent playout currently being performed on the selected network player or the network players in the selected group. The stop button can also be used to stop normal playout of a playlist.

**Note**

The urgent playout function interrupts playout currently being carried out on the network player. Ongoing playout stops, and the selected playlist will be played. Also, scheduled playout will not start during urgent playout. Check the network player status in the NSP-100 Status window before starting urgent playout, and click the stop button at the end.

## Edit Playlist Window

The Edit Playlist window enables you to create "playlists" and "playlist modules" by combining registered video, graphics and text materials. Playlists and playlist modules also accommodate the external device control commands. Each network player plays the materials out according to the playlists created here.

Video, graphics and text lists are displayed in the upper half of the Edit Playlist window. Select the desired material from the list and place it in the playlist in the lower half of the window.

### Hint

If a material/event type or title is longer than the width of the list, and thus it is not fully displayed, move the mouse pointer over the code, type, or title. The entire text pops up.

Annotations in the screenshot:

- Playlist Title Box:** Points to the text input field containing "Customer's Voice".
- Properties Button:** Points to the button labeled "Properties".
- Video, Graphics and Text Lists:** Points to the three columns of material lists.
- Playlist:** Points to the table at the bottom of the window.
- Destination Drop-down List Box, Send and Abort Buttons:** Points to the "Destination: Japan" dropdown and the "Send" and "Abort" buttons.
- Default Display Setup Button:** Points to the "Default Display Setup" button.
- Inserted Playlist Modules:** Points to the rows in the playlist table.

### Playlist Title Box

The Playlist Title box shows the title of the displayed playlist. Click the Properties button to modify the playlist title.



### **Properties Button**

Opens the Properties dialog box in which you can specify detailed information on the playlist, such as the type and title, and whether playout should be repeated.

In the case of the Scheduling Application, the Properties dialog box also enables you to specify the period of automatic playout, for example, from 03/06/07 to 03/06/13.

### **Video, Graphics and Text Lists**

Registered material data (sequential number, type, and title) is displayed, in the same way as in the Material Management window. Temporary pieces of material are listed at the bottom.

The duration of video material, and the estimated time to display the piece of text material are also displayed.

You can sort (ascending order) the material by clicking the title of the desired column.

Drag & drop the desired materials from here to the playlist. Note that a green background indicates that the material is not ready (has not yet been converted), just as in other windows.

Also, in the same way as in the Material Management window, you can right-click a piece of material and use a command on the menu, such as [Preview on PC].


### **Playlist**

A playlist is a list of materials arranged as events, in the order of playout. Each piece of material to be played out is displayed as a separate event, depending on the material type. There is a "Start Time" column at the leftmost edge of the list in which the start time of each event appears. Events assigned the same number (No.) will start playing simultaneously. The gray strip indicates a break, that is a period in which no material is played out.

A drag & drop operation from the Video, Graphics, or Text list, above, to the playlist adds/inserts an event at the drop position. Text material can only be added to a video or a piece of graphics material. It cannot be an event by itself.

#### **Hint**

If an independent text event occurs, it appears in red on the playlist. The system does not allow you to save such a playlist. Revise the playlist so that every text event will be played together with a video and/or graphics event(s).

There is a Control column at the rightmost edge of the playlist. Right-clicking this column displays a menu to add/clear a registered external device control command to/from the event. Events with an external device control command are shown with the external device control mark () in this column.

Right-clicking an event displays a menu that lists the functions available for the event, such as deleting the event or specifying the display size and position of the event.

#### **Note**

In the case of NTSC video, the system regards one second as 30 frames of video signal although it is approximately 29.97 frames (non-drop frame mode). Hence the actual length is longer than the duration indicated for such a piece of video material. This error is approximately two frames for one minute and 108 frames (3.3 seconds) for one hour. The system adjusts this error to indicate the start times of the events on the playlist, but there still is a small amount of error (less than one second) between the indication and the actual start time.

**Inserted Playlist Module**

If you insert a "playlist module," that is a playlist piece to be inserted into another playlist, it appears as a light-gray comment line with a closed arrow mark (✖). Double-clicking this closed arrow mark expands the module, and its events appear enclosed by two light-gray comment lines whose Start Time columns have arrow marks (⏴ and ⏵).

The expanded playlist module can be collapsed by double-clicking the arrow mark on its upper comment line.

**Destination Drop-down List Box, Send and Abort Buttons**

The Destination drop-down list box and the Send button are used to specify the destination network player group and send the playlist. The Abort button cancels playlist transfer.

**Default Display Setup Button**

Opens the Display Setup dialog box to specify the default size (only for video material) and positions of the video and text materials.

To modify those parameters for an event, right-click the desired event, then click [Display Setup] on the menu.

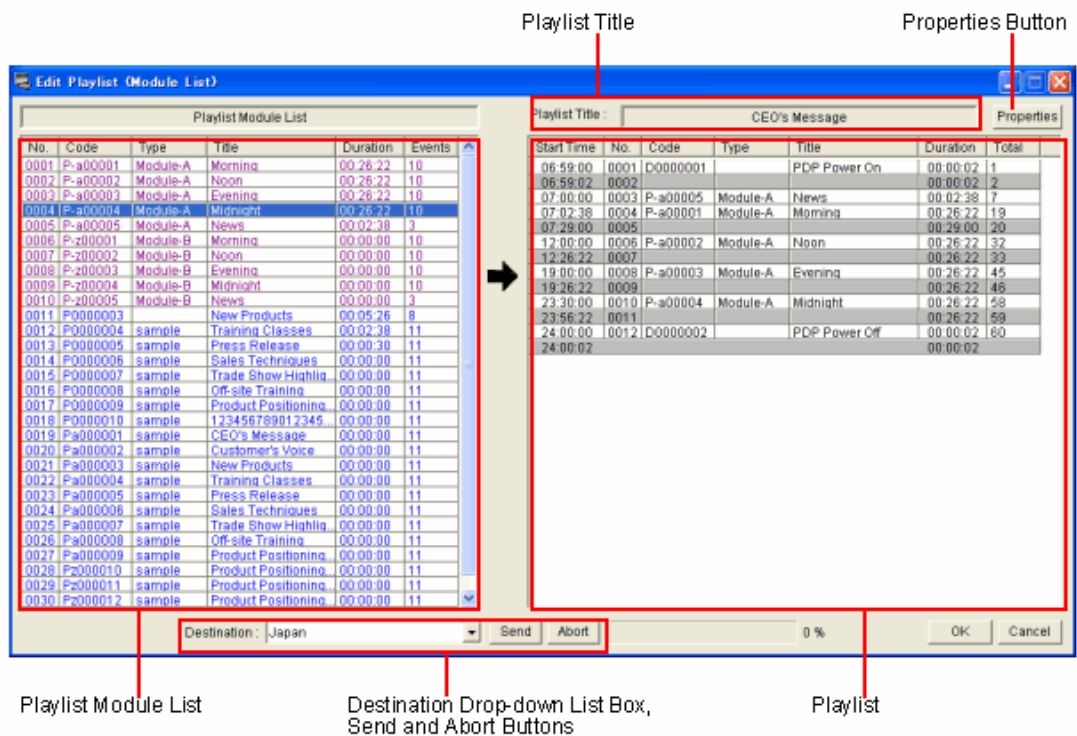
## Edit Playlist (Module List) Window

The Edit Playlist (Module List) window enables you to arrange the "playlist modules" to create "playlists."

There is playlist module list in the left half of the Edit Playlist (Module List) window. Select the desired module from the list and place it in the playlist in the right half of the window.

### Hint

This window is useful for arranging playlist modules to schedule programs for a particular, but it does not allow you to insert discrete video, graphics or text events in the playlist. Use the normal Edit Playlist window to insert those events.



### Playlist Title Box

The Playlist Title box shows the title of the displayed playlist. Click the Properties button to modify the playlist title.

### Properties Button

Opens the Properties dialog box in which you can specify detailed information on the playlist, such as the type and title, and whether playout should be repeated.

In the case of the Scheduling Application, the Properties dialog box also enables you to specify the period of automatic playout, for example, from 03/06/07 to 03/06/13.

### **Playlist Module List**

Registered playlist module data (sequential number, code, type, title, duration, and the number of events in the module) is displayed.

Drag & drop the desired module from here to the playlist.

Also, in the same way as in the Material Management window, you can right-click a piece of material and use a command on the menu, such as [View].

### **Playlist**

Displays a playlist, in which the playlist modules and the external device control events are listed in the order of payout. There is a "Start Time" column at the leftmost edge of the list in which the start time of each module appears, and the "Total" column at the rightmost edge in which the total numbers of the events from the playlist top to that line. The gray strip indicates a break, that is a period during which no material is played out.

A drag & drop operation from the Playlist Module list at the left to the playlist adds/inserts a playlist module at the drop position.

The external device control commands are added to the playlist as the event lines, in the same way as the playlist modules. Right-click the line immediately below the location where you want to insert the external device control command, and select the desired external device control command on the sub-menu of [Insert Control (External Device)].

#### **Note**

- In the case of NTSC video, the system regards one second as 30 frames of video signal although it is approximately 29.97 frames (non-drop frame mode). Hence the actual length is longer than the duration indicated for such a playlist module. This error is approximately two frames for one minute and 108 frames (3.3 seconds) for one hour. The system adjusts this error to indicate the start times of the events on the playlist, but there still is a small amount of error (less than one second) between the indication and the actual start time.
- The "Total" column of the playlist shows the total number of events from the top of the playlist to that line. Note, however, that adding a playlist module to the playlist inserts an extra two lines (one line each at the top and bottom of the playlist module, as comment lines), so that the total number increases by 2 + the actual number of the events in the playlist module.

### **Destination Drop-down List Box, Send and Abort Buttons**

The Destination drop-down list box and the Send button are used to specify the destination network player group and send the playlist. The Abort button cancels playlist transfer.

## Routine Operations

### Material Preparations

#### Video Material Preparation

To use video material for playout, prepare the required information, such as titles, and the video files, then send them to the network players. Video files should be converted from AVI, MPEG2 or VSR-2000/2000A format into NSP format before sending because the network players only play files in NSP format.

#### Note

- The system manages AVI files created by Adobe Premiere or captured from a video equipment using this software, with a duration of from five seconds through 150 minutes.

To create an AVI file using Premiere, specify "1 Frame" in the "Interleave" item in the audio setting window when exporting the timeline as a movie.

Note that the system does not accept AVI files that have no audio data.

See "Capturing Video" for details on capturing operation.

There are some restrictions to use other types, such as MPEG2(PS) or VSR-2000/2000A, of video files, too. Consult your supplier or Sony sales representative for details.

- Reading video files directly from a CD-R or DVD-R for conversion may result in an error because of their slow reading speed. In such a case, copy the video files to the hard disk first, then specify the copied folder.

#### Hint

The system also enables you to register material data prior to converting a video file. (See "Registering Material Data Prior to Converting a Video File.") This is convenient when you would like to create a playlist before you obtain the video files used in it.

- 1** Click [Material Management] on the main menu to open the Material Management window.
- 2** Select the Video tab, then click [Convert Material].  
The Convert Material window appears.
- 3** Click [Browse] and specify the folder where the video files (such as AVI files) to be converted are stored, if necessary.
- 4** Click [Parameter], modify the settings for protection, video rate (only for AVI files), and audio filter (only for AVI files), if necessary, then click [OK].  
Normally, leave the setting in the File Size drop-down list box unchanged. See the explanation of the Parameter Settings dialog box for details on the items in the dialog box.
- 5** Select the video files to be converted from the upper video file list.  
To select more than one file, hold down the Ctrl key and click them one by one. To select a range of files, hold down the Shift key and click both the first and last files in the range.
- 6** Click [Start].  
Conversion of the selected video files starts. The converted material appears in the lower list on a blue background, as well as in the Material Management window.

### **Replacing Video Material Having a Certain Material Code**

You can replace material that has a certain material code. This operation is useful when you want to regularly replace a part of the content without editing the playlist. Make sure the material meets the following conditions and perform the procedure described above.

- Use material of the same duration as that of the one to be replaced. If the duration of the two pieces of material are different, unexpected playout may occur.
- Make the name of the source video file the same as the material code of the one to be replaced. To replace the piece of material with the code "M0000001," for example, rename the captured file "M0000001.avi" using Windows Explorer.
- Allow enough time for replacement. Make sure that the new material arrives at the network player at least 15 seconds before the playlist is to start.

### **Entering/Modifying the Type, Title, or Duration of the Material**

Double-click the column for type, title, or duration (only editable for temporary files) of the desired material in the Material Management window. This enables editing in that column. Press the Enter key to complete the modification.

### **Specifying the Date for Automatic Deletion**

Right-click the desired material in the Material Management window, then click [Set Delete Date] or [Clear Delete Date]. When you click [Set Delete Date], a calendar appears. Select the date for deletion, then click [OK].

## **Registering Material Data Prior to Converting a Video File (Video Material Preparation)**

To use video material for playout, prepare the required information, such as titles, and the video files, then send them to the network players. Video files should be converted from AVI, MPEG2 or VSR-2000/2000A format into NSP format before sending, because the network players only play files in NSP format.

#### **Note**

- The system manages AVI files created by Adobe Premiere or captured from a video equipment using this software, with a duration of from five seconds through 150 minutes.  
To create an AVI file using Premiere, specify "1 Frame" in the "Interleave" item in the audio setting window when exporting the timeline as a movie.  
Note that the system does not accept AVI files that have no audio data.  
See "Capturing Video" for details on capturing operation.  
There are some restrictions to use other types, such as MPEG2(PS) or VSR-2000/2000A, of video files, too. Consult your supplier or Sony sales representative for details.
- Reading video files directly from a CD-R or DVD-R upon conversion may result in error because of their slow reading speed. In such a case, copy the video files to the hard disk, then specify the copied folder.

The system enables you to register material data prior to converting a video file. This is convenient when you would like to create a playlist before you obtain the video files used in it.

### Hint

When you already have the video file to be converted, you can simultaneously register and convert video material. (See "Video Material Preparation.")

### Registering Material Information

- 1 Click [Material Management] on the main menu to open the Material Management window.
- 2 Select the Video tab and click [Temporary File].  
This adds a new blank line at the bottom of the list. Its green background color means that the corresponding video file is not yet ready.
- 3 Specify the type, title, and date of automatic deletion from the network player for the newly added material.  
See the explanation below for details.
- 4 Repeat steps 2 and 3 as necessary.  
You can now create playlists using this registered material.

### Converting Files

- 1 When you obtain the video files, click [Convert Material] in the Material Management window to open the Convert Material window.
- 2 Click [Browse] and specify the folder where the video files (such as AVI files) to be converted are stored, if necessary.
- 3 Click [Parameter], modify the settings for protection, video rate (only for AVI files), and audio filter (only for AVI files), if necessary, then click [OK].  
Normally, leave the setting in the File Size drop-down list box unchanged. See the explanation of the Parameter Settings dialog box for details on the items in the dialog box.
- 4 Select the file to be converted from the upper video file list, then drag & drop it onto the corresponding material data in the lower material list.  
Conversion of the selected video file starts. The background color of the converted material changes to blue.
- 5 Repeat step 4 for all the necessary materials.

### Entering/Modifying the Type, Title, or Duration of the Material

Double-click the column for type, title, or duration (only editable for temporary files) of the desired material in the Material Management window. This enables editing in that column. Press the Enter key to complete the modification.

### Specifying the Date for Automatic Deletion

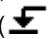
Right-click the desired material in the Material Management window, then click [Set Delete Date] or [Clear Delete Date]. When you click [Set Delete Date], a calendar appears. Select the date for deletion, then click [OK].

### Capturing Video (Video Material Preparation)

To use video material for playout, prepare the required information, such as titles, and the video files, then send them to the network players. To use video, it is necessary to capture video from a video device, create an AVI file, then convert the AVI file into NSP format because the network players only play files in NSP format.

**Note**

- Use a camcorder or VCR connected to the PC via i.LINK (IEEE1394). Please contact your supplier or Sony sales representative for the video devices that you can use for capturing. Other video devices may be used, but depending on the device, some operations, such as shuttle control and cue-up operations, may not be available. Note that more than one video device cannot be connected.
- Picture and sound are not synchronized during capture. Although some noise may be output from the speaker, it will not be contained in the captured AVI file.
- Depending on the operating environment of your PC, the captured AVI file may have skipped (dropped) frames. The In and Out points of the captured AVI file have a margin of error of two frames or less, respectively.

- 1** Power the video device on, and insert the desired cassette tape.
- 2** Close all windows and dialog boxes except for the main menu.
- 3** Click [Video Capture] on the main menu.  
The Capture window appears.
- 4** Click [Folder], then specify the folder where the AVI file should be stored.
- 5** Cue up the desired start point of the video using the VCR control buttons in the Capture window, then click [In].  
The time code of the In point appears.  
Or, if you are using a DVCAM format tape, enter the time code of the In point directly in the text box. In this case, clicking the cue up (  ) button on the right cues the time code up, then you can click [In].
- 6** In the same way, cue up the desired end point of the video, then click [Out].  
The time code of the Out point and the duration calculated from the time codes of the In and Out points in non-drop frame mode are displayed.  
Or, when you are using a DVCAM format tape, enter the time code of the Out point in the text box, cue the point up, then click [Out].

**Note**

The length of AVI files that can be used in the BZNP-100 is from five seconds to 150 minutes. Capturing will automatically stop when the length of the AVI file exceeds 150 minutes.

- 7** Click [REC].  
The VCR automatically cues up the In point, then starts capturing. You can watch the video in the Capture window. The VCR automatically stops when capturing ends at the Out point.
- 8** Repeat from step 5 to continue capturing.  
Go to "Video Material Preparation" or "Registering Material Data Prior to Converting a Video File" to convert the created AVI file into NSP format.

**Stopping Capturing**

Click [Stop].

Capturing stops immediately. The time code of the Out point and the duration are automatically modified according to the actual AVI file.

After conversion, if you do not need this AVI file, discard it.



### **Capturing Without Specifying In and Out Points (Live Recording)**

After step 3, cue up the In point of the video (if necessary), then click [Live REC]. Capturing immediately starts, and continues until you click [Stop].

The In and Out points would be the time codes when you clicked [Live REC] and [Stop], respectively.

This function allows you to create AVI files in the same manner as you do using a video camera.

### **File Name and Folder for the AVI Files**

The system assigns a file name consisting of A+ a 7-digit sequential number which starts from "A0000001" to each AVI file. The file extension is ".avi."

You can change the folder where the AVI files are stored by clicking [Folder].

Changing the folder does not affect the file names. If you change the folder after creating "A0000165.avi," for example, the AVI file created next would be named "A0000166.avi."

#### **Note**

Note that if the remaining disk space of the drive where the AVI files are stored falls below 500Mbytes, capturing is terminated.

## Graphics Material Preparation

To use graphics material for playout, prepare the required information, such as titles, and the graphics files, then send them to the network players. The graphics files should be converted from bmp format into NSP format before sending because the network players only play files in NSP format.

### Note

The system manages graphics files in the Windows bmp format with the "bmp" file extension, a color depth of 24-bit RGB, 8-bit Index (256 colors), 4-bit Index (16 colors) or 1-bit Index (2 colors), and a size between 320 pixels (W) x 240 pixels (H) and 720 pixels (W) x 480 pixels (H) for NTSC, or between 320 pixels (W) x 240 pixels (H) and 720 pixels (W) x 576 pixels (H) for PAL. It also supports JPEG format files with the "jpg" file extension.

See "Files Used for Graphics Material" for details.

### Hint

The system also enables you to register material data prior to converting a graphics file. (See "Registering Material Data Prior to Converting a Graphics File.") This is convenient when you would like to create a playlist before you obtain the bitmap files used in it.

- 1 Click [Material Management] on the main menu to open the Material Management window.
- 2 Select the Graphics tab, then click [Convert Material].  
The Convert Material window appears.
- 3 Click [Browse] and specify the folder where the bitmap files to be converted are stored, if necessary.
- 4 Select the bitmap files to be converted from the upper bitmap file list.  
To select more than one file, hold down the Ctrl key and click them one by one. To select a range of files, hold down the Shift key and click both the first and last files in the range.
- 5 Click [Start].  
Conversion of the selected bitmap files starts. The converted material appears in the lower list on a blue background, as well as in the Material Management window.

### Replacing Graphics Material Having a Certain Material Code

You can replace material that has a certain material code. This operation is useful when you want to regularly replace a part of the content without editing the playlist.

Make sure the material meets the following conditions and perform the procedure described above.

- Make the name of the source graphics file the same as that of the material code of the one to be replaced. To replace a piece of material with a material code of "S0000001" with a bmp file, for example, rename the bmp file "S0000001.bmp" using Windows Explorer.
- Allow enough time for replacement. Make sure that the new material arrives at the network player at least 15 seconds before the playlist is to start.

### **Entering/Modifying the Type or Title of the Material**

Double-click the column for type or title of the desired material in the Material Management window. This enables editing in that column. Press the Enter key to complete the modification.

### **Specifying the Date for Automatic Deletion**

Right-click the desired material in the Material Management window, then click [Set Delete Date] or [Clear Delete Date]. When you click [Set Delete Date], a calendar appears. Select the date for deletion, then click [OK].

## **Registering Material Data Prior to Converting a Graphics File (Graphics Material Preparation)**

To use graphics material for payout, prepare the required information, such as titles, and the graphics files, then send them to the network players. The graphics files should be converted from bmp format into NSP format before sending, because the network players only play files in NSP format.

The system enables you to register material data prior to converting graphics file. It is convenient when you would like to create a playlist before you obtain the bitmap files used in it.

#### **Note**

The system manages graphics files in the Windows bmp format with the "bmp" file extension, a color depth of 24-bit RGB, 8-bit Index (256 colors), 4-bit Index (16 colors) or 1-bit Index (2 colors), and a size between 320 pixels (W) x 240 pixels (H) and 720 pixels (W) x 480 pixels (H) for NTSC, or between 320 pixels (W) x 240 pixels (H) and 720 pixels (W) x 576 pixels (H) for PAL. It also supports JPEG format files with the "jpg" file extension.

See "Files Used for Graphics Material" for details.

#### **Hint**

When you already have the bitmap file to be converted, you can simultaneously register and convert graphics material. (See "Graphics Material Preparation.")

### **Registering Material Information**

- 1** Click [Material Management] on the main menu to open the Material Management window.
- 2** Select the Graphics tab and click [Temporary File].  
This adds a new blank line at the bottom of the list. Its green background color means that the corresponding graphics file is not yet ready.
- 3** Specify the type, title, and date of automatic deletion from the network player for the newly added material.  
See the explanation below for details.
- 4** Repeat steps 2 and 3 as necessary.  
You can now create playlists using this registered material.

### **Converting Files**

- 1** When you obtain the bitmap files, click [Convert Material] in the Material Management window to open the Convert Material window.

- 2** Click [Browse] and specify the folder where the bitmap files to be converted are stored, if necessary.
- 3** Select the file to be converted from the upper bitmap file list, then drag & drop it onto the corresponding material data in the lower material list.  
The selected bitmap file is converted into the NSP-format. The background color of the converted material changes to blue.
- 4** Repeat step 3 for all the necessary materials.

### Entering/Modifying the Type or Title of the Material

Double-click the column for type or title of the desired material in the Material Management window. This enables editing in that column. Press the Enter key to complete the modification.

### Specifying the Date for Automatic Deletion

Right-click the desired material in the Material Management window, then click [Set Delete Date] or [Clear Delete Date]. When you click [Set Delete Date], a calendar appears. Select the date for deletion, then click [OK].

## File Used for Graphics Material

To use graphics material for playout, prepare the required information, such as titles, and the graphics files, then send them to the network players. The graphics files should be converted from the bmp format into NSP format before sending because the network players only play files in NSP format.

The system manages the following types of graphic files and converts them into NSP format.

### Format

Windows bmp format with the "bmp" file extension, a color depth of 24-bit RGB, 8-bit Index (256 colors), 4-bit Index (16 colors) or 1-bit Index (2 colors), or JPEG format with the "jpg" file extension.

### Size (W x H)

Signal	Display Type	Min. (Pixels)	Max. (Pixels)
NTSC	Under-scan (Full)	320 x 240	720 x 480
	Over-scan (88%)	320 x 240	630 x 420
PAL	Under-scan (Full)	320 x 240	720 x 576
	Over-scan (88%)	320 x 240	630 x 504

The standard size is 720 pixels (W) x 480 pixels (H) for an NTSC system, and 720 pixels (W) x 576 pixels (H) for a PAL system. Smaller graphics files will be displayed at the center of the screen on a black background upon playout. Check the display area of your display monitor and create files of appropriate size, because there are some display monitors that cannot fully display the outer area.

### Notes on Using Microsoft PowerPoint Slides

- Microsoft PowerPoint of Office 2000 exports full-color JPEG files and 256-color bmp files. To use full color graphics files, you must export the JPEG files then convert them into bmp format using a graphics converter.

- The following table shows the maximum size (W x H) of the graphics files managed by the system in units of inches. Check this size when doing page setup for PowerPoint slides.

<b>Signal</b>	<b>Display Type</b>	<b>Max. (Pixels)</b>	<b>Max. (Inches)</b>
NTSC	Under-scan (Full)	720 x 480	10.00 x 6.67
	Over-scan (88%)	630 x 420	8.76 x 5.84
PAL	Under-scan (Full)	720 x 576	10.00 x 8.00
	Over-scan (88%)	630 x 504	8.76 x 7.00

## Text Material Preparation - Character Text

The network players display text material, such as subtitles, together with video and/or graphics materials. To use text material for playout, prepare the required information, such as title, and the text to be displayed, then send them to the network players.

### Note

ISO 8859-1 (ASCII 8-bit code table Latin-1) characters can be used for the text material and material/playlist titles.

- 1 Click [Material Management] on the main menu to open the Material Management window.
- 2 Select the Text tab, then click [New].  
The Edit Text dialog box appears.
- 3 Click [Properties] then specify each item in the Properties dialog box.  
See the explanation of the Properties dialog box for details.
- 4 Type the text.  
See the explanation of the Edit Text dialog box for details.
- 5 Click [Save].  
The newly added text data appears in the Material Management window.

### Changing the Font Color

The color of the text can be specified in the Properties dialog box. The system also enables you to specify another color for part of the text, provided the font installed on the PC (i.e. not the font of the NSP-100) is used.

- 1 In the Font Settings section of the Properties dialog box, click the PC Installed option button, then select the desired font from the drop-down list box.  
And, select [16 Colors] from the Color Depth option buttons, then click [OK].
- 2 Type the text in the Edit Text dialog box, select the desired part by dragging the mouse, then right-click the selected part.
- 3 Click [Font Color] on the right-click menu.
- 4 Select the desired color from the 15 colors displayed in the Font Color Setting dialog box, then click [OK].  
If the desired color is not shown, select an unnecessary color, click [Change Color] and replace the color of that cell.

### Changing the Font Style

The system enables you to specify the font style, such as bold, italic or underlined for all or part of the text, provided the font installed on the PC (i.e. not the font of the NSP-100) is used.

- 1 Type the text in the Edit Text dialog box, select the desired text by dragging the mouse, then right-click the selected part.
- 2 Click [Font Style] on the right-click menu, then click the desired font style from the cascading menu.  
To cancel the specified font style, click the checked font style in the same way.

### Note

Only one font face and size can be specified for each text material piece. When the NSP-100 built-in font is used, you cannot specify the size, as there is only one size. Also, it is not possible to use more than one text color nor to make the text bold, italic, or underlined.

### **Editing Functions for Scrolling Text Material**

The following editing functions are available for scrolling text material:

- Deleting the line breaks at the ends of lines (This is helpful when pasting emailed text.)
- Adding a screen-width space at the end of a line to separate sentences in a single piece of text material
- Stripping out unnecessary space at the end of a line

The procedure is as follows for any of the cases above:

- 1** Select the desired part of the text.
- 2** Right-click the selection.  
A pop-up menu appears.
- 3** Click [Delete Line Break], [Add Space to End of Line], or [Strip Trailing Space], depending on the purpose.

### **Modifying Text Material**

Right-click the desired text material in the Material Management window, then click [Edit] on the menu. This opens the Edit Text dialog box containing the selected text data. Modify it as you desire, and click [Save].

To modify the type and/or title of a piece of material, double-click the column for type or title of the desired material in the Material Management window. This enables editing in that column. Press the Enter key to complete the modification.

### **Specifying the Date for Automatic Deletion**

Right-click the desired material in the Material Management window, then click [Set Delete Date] or [Clear Delete Date]. When you click [Set Delete Date], a calendar appears. Select the date for deletion, then click [OK].

## Text Material Preparation - Bitmap Text

The network players display text material, such as captions or subtitles, together with video and/or graphics materials. The system enables you to use bitmap files as text material by registering them with the required information, such as title, then sending them to the network players.

This function is useful to display certain marks, such as a program or company logo at the desired position on the full-size video, in the same way as you do using a downstream keying function.

The system manages the following types of files for use as bitmap text:

- Windows bmp format with a color depth of 8-bit Index (256 colors), 4-bit Index (16 colors) or 1-bit Index (2 colors).
- Bitmapped text from 16 to 100 pixels in height.  
For the width, there is no problem with a bitmap file with a width of up to about 720 pixels (the width of the display). You may not be able to use a bitmap file with a width greater than that, depending on its color depth and height.

### Hint

The system enables you to make the background color transparent even in the case of a bitmap text. It considers the color corresponding to index 0 of the bitmap as the background, hence transparent, color.

- 1 Click [Material Management] on the main menu to open the Material Management window.
- 2 Select the Text tab, then click [Read Bitmap].  
The Open dialog box appears.
- 3 Select the desired bitmap file, then click [Open].  
The selected bitmap is added as text material in the Material Management window. There is no length (Len.) data shown for bitmap text material.
- 4 Right-click the added text, click [Edit] on the right-click menu, then specify each item in the Properties dialog box.  
See the explanation of the Properties dialog box for details.  
It is not necessary to specify the settings in the Font Settings section, text color, and background color for bitmap text.

### Note

The system only allows you to modify the setting of the items in the Properties dialog box after the bitmap text is registered. To replace the bitmap, create a new piece of bitmap text and discard the unnecessary one, or see "Replacing Bitmap Text Having a Certain Material Code" described below.

### Replacing Bitmap Text Having a Certain Material Code

You can replace material that has a certain material code. This operation is useful when you want to regularly replace a part of the content without editing the playlist.

Make sure the material meets the following conditions and perform the bitmap reading procedure described above.

- Make the name of the source bitmap file the same as that of the material code of the one to be replaced. To replace bitmap text with a material code of "T0000001" with a bmp file, for example, rename the bmp file "T0000001.bmp" using Windows Explorer.



- Allow enough time for replacement. Make sure that the new material arrives at the network player at least 15 seconds before the playlist is to start.
- Attributes such as text type, speed, the number of times to be displayed, and so on, will be those of the bitmap text that was specified last. However, the text type may change as shown in the following table, depending on whether the width of the original bitmap text is more than 720 pixels. Check the attributes, and modify them if necessary.

<b>Text type of the most recently specified bitmap</b>	<b>Text type of the replaced bitmap text (720-pixel width or less)</b>	<b>Text type of the replaced bitmap text (More than 720-pixel width)</b>
Constant	No change (Constant)	Changed to Scroll
Blink	No change (Blink)	Changed to Scroll
Scroll in	Changed to Constant	No change (Scroll in)
Scroll	Changed to Constant	No change (Scroll)

#### **Specifying the Date for Automatic Deletion**

Right-click the desired material in the Material Management window, then click [Set Delete Date] or [Clear Delete Date]. When you click [Set Delete Date], a calendar appears. Select the date for deletion, then click [OK].

## Device Control Command Preparation

The system provides external device control functions for use upon playout from the network players, such as turning on and off or switching the input lines of a plasma display panel, or sending GPI (General Purpose Interface) pulses to devices connected to the RS-232C connector of a network player.

To control an external device, create a device control command and send it to the network players. This device control command is included in the events of a playlist to control the external device during playout.

The BZNP-100 also enables you to create commands to control the NSP-100 network players, and use them in the urgent playout procedure to control the network players. (You cannot insert those files into the playlists, though.)

- 1 Click [Material Management] on the main menu to open the Material Management window.
- 2 Select the Control tab, then click [New].  
The Edit Control (External Device/NSP-100) dialog box appears.
- 3 Enter the type and title of the device control command to be created in the Type and Title text boxes, respectively.  
This information is used to identify each device control command.
- 4 Click the PDP Control option button to control the plasma display panel connected to the network player, or the GPI Control option button to control any other type of external device.
- 5 If the PDP Control option button is selected, select the desired control from the Control drop-down list box.  
If the GPI Control option button is selected, check the GPI pulse to be output. You can check more than one check box simultaneously.
- 6 Click [OK].  
The newly created device control command appears in the Material Management window.

### Creating a Control Command for the Network Players

Select the NSP-100 Control option button in step 4 in the procedure above, type the command for the network players in the Control text box, then click [OK].

#### Note

- Control commands for network players cannot be inserted into a playlist.
- An erroneous control command may result network player problems.  
Refer to the protocol manual of the network player for details on how to enter a control command. Ask your supplier or Sony sales representative about the protocol manual.

### Modifying a Device Control Command

Right-click the desired control command on the Material Management window, then click [Edit] on the menu. This displays the Edit Control (External Device/NSP-100) dialog box containing the selected control command data. Modify the command as needed, then click [OK].

To modify the type and/or title of a piece of material, double-click the type or title column of the desired material in the Material Management window. This enables editing in that column. Press the Enter key to complete the modification.

### **Modifying the Label for a PDP Control**

The Edit Control (External Device/NSP-100) dialog box allows you to modify the label for all the items, except for "Power On" and "Power Off," in the PDP Control drop-down list box.

When you select an item in step 5, it appears highlighted. Enter the desired text, then click [Set].

This enables you to use the appropriate labels, according to the various control functions of the PDPs.

### **Controlling an External Device or the Network Players Using the Urgent Playout Function**

To control an external device or a network player using a registered control command, select the desired network player group in the Destination drop-down list box, select the desired control command, then click the play button in the Urgent section.

The urgent playout function interrupts playout currently being carried out on the network player. Ongoing playout stops, and the selected control command will run on each network player.

Check the network player status in the NSP-100 Status window before starting urgent playout of the device control command.

## Checking Materials (Preview)

The following procedures enable you to check the contents of the material.

In the case of a piece of video or graphics material, the picture appears in the Preview window. The Preview window for the video material has video control buttons and a slider used to check the desired part of the video.

In the case of a piece of character text material, the Edit Text dialog box appears.

### Note

- The system sometimes divides a piece of video material into several files upon conversion for file transfer efficiency. In such a case, you can only preview the top (first file) of the video material.
- Previewing video material requires a playback function for MPEG2 files that is not included in the BZNP-100 software package. Purchase a utility software application for MPEG2 playback and install it to preview MPEG2 files. We are unable to provide one for free because of issues related to the license agreement. AVI files, however, can be played back using DirectShow. Note that it is not possible to play VSR-2000/2000A files (pre-conversion) on the PC.

### When Converting Video or Graphics Files into NSP Format

On the video or graphics file list (upper list) in the Convert Material window, right-click the desired file, then click [Preview on PC] on the menu.

### In the Material Management Window

Right-click the desired piece of material, then click [Preview on PC] (or [Edit] for character text material) on the menu.

### When Editing Playlists

For video, graphics or text material list in the Edit Playlist window, right-click the desired piece of material, then click [Preview on PC] (or [Display/Edit] in the case of character text material).

### Hint

You can use urgent playout function for preview of materials and playlists on a network player, provided you have a monitor connected to the network player near you.

## Deleting Materials and Playlists (Automatic Deletion Function and Manual Deletion)

The video, graphics, and text materials, and playlists sent to the network players are automatically deleted on the specified date so that the network players will not be overfilled. And a piece of material or playlist will be replaced if a new piece assigned the same code is sent.

### Automatic Deletion Function

The following settings are necessary to use the automatic deletion function of the network player.

- On the "System Administrator Setup" screen of the network player, specify "Yes" for "Activate 'Automatic Delete'."
- Specify the automatic deletion date for each piece of material and playlist. Specify the date for automatic deletion of video, graphics, and text materials and of the playlists (in the case of the Presentation Application) manually. Right-click the desired material or playlist in the Material Management window, click [Set Delete Date], then select the date on the calendar displayed and click [OK]. To deactivate the automatic deletion function, right-click the material or playlist in the same way, then click [Clear Delete Date]. In the case of the Scheduling Application, the day after the playout end date is automatically specified as the automatic deletion date of the playlist. You cannot change it. At 0:00am, the network players that have automatic deletion enabled start searching for playlists and materials whose automatic deletion date is that day, and delete them.

### Manual Deletion

The system also allows you to manually delete materials and playlists. Proceed as follows to delete materials that are not assigned any date for automatic deletion.

#### Hint

You can also delete device control commands or materials stored on the PC with this procedure.

See "Editing or Deleting a Playlist" for the manual deletion procedure for the playlists.

- 1 Click [Material Management] on the main menu to open the Material Management window, then select the tab of the material to be deleted.
- 2 Click the PC File Management option button to delete materials stored on the PC. To delete materials stored on a network player, click the NSP-100 Remote File Management option button, then select the desired network player from the NSP-100 drop-down list box. The list of materials stored in the selected location appears.
- 3 Select the material(s) to be deleted. To select more than one piece of material, hold down the Ctrl key and click them one by one. To select a range of material, hold down the Shift key and click both the first and last piece of material in the range.

- 4** Right-click the selected material, then click [Delete] on the menu.  
Or, press the Delete key on the keyboard.  
A confirmation message appears.
- 5** Click [Yes].

## Importing Materials and Playlist Modules Created with the BZNP-A1

If you created contents using the Sony BZNP-A1 authoring software, and converted it into playlist modules for distribution to network players, the BZNP-100 enables you to import and use such materials and playlist modules for playlist creation, so that the contents can be distributed and played on network players.

There are two cases where distribution data created with the BZNP-A1 can be used. Refer also to the system guide and the BZNP-100 "Operations Guide (For Using Content Created with the BZNP-A1)" for details of the operation.

### Note

The BZNP-100 does not perform automatic scheduled playlist sending and automatic re-sending for transfer failures while it is updating material and playlist module data, or importing packaged materials and playlist modules.

### Updating Material and Playlist Module Data Lists

If the BZNP-A1 directly has written materials and playlist modules into the BZNP-100 material management folder, check and make it reflected in the Material Management window as follows:

### Hint

This operation is not necessary if the BZNP-100 started after the BZNP-A1 wrote its distribution data into the BZNP-100 material management folder, as the BZNP-100 checks the material management folder upon start-up.

- 1 Close all BZNP-100 dialog boxes and windows except for the main menu.
- 2 Click [Import Materials] on the main menu.  
The Import Materials dialog box appears.
- 3 Select the Update Materials option button.
- 4 Click [Start].  
The BZNP-100 checks the material management folder, and updates the Material Management window display.  
Materials and playlist modules created with the BZNP-A1 appear in purple. They are available for playlist creation/editing. To check the contents, preview the playlist module using the procedure described in "Checking a Playlist."

### Importing a Distribution Data Package Created with the BZNP-A1

If you receive a CD-R or DVD-R on which materials and playlist modules created using the BZNP-A1 are stored as a package, import them as follows:

- 1 Close all BZNP-100 dialog boxes and windows except for the main menu.
- 2 Insert the medium in the drive, then click [Import Materials] on the main menu.  
The Import Materials dialog box appears.
- 3 Select Import Package from BZNP-A1 option button.
- 4 Specify the packaged data folder written on the medium from the drop-down list box or by clicking [Browse].
- 5 Click [Start].  
The materials and playlist module are copied to the material management folder, and appear in the Material Management window.  
Materials and playlist modules created using the BZNP-A1 appear in purple. They are

available for playlist creation/editing. To check the contents, preview the playlist module using the procedure described in "Checking a Playlist."

**Note**

It is not possible to modify or edit material and playlist modules displayed in purple in the Material Management window, but you can save such text material or playlist modules as new material/playlist modules, and edit them.

For a piece of text material, simply edit it. Then the BZNP-100 automatically registers it as a new piece.

For a playlist module, open a blank Edit Playlist window, copy and paste the imported playlist module using the short-cut key or by dragging it from the Material Management window. Then, open the module, edit the content, and save it as a new playlist. Note that you must specify playlist properties, such as the title, type, and playlist module option, for the new playlist.



---

## Playlist Preparations

### What is a Playlist?

#### What is a Playlist?

A "playlist" is a list in which the materials are arranged in order of playout. The BZNP-100 sends a playlist together with the necessary materials to the network players, then each network player plays the materials out according to this list. Each piece of material listed on the playlist is referred to as an "event."

In the Edit Playlist window, events are listed separately depending on the material type. Upon playout, the text event is superimposed onto the graphics event on the same line, then the video event on the same line is overlaid as shown below. When there are only video and text events on a single line, however, the text event is overlaid on full screen video.

The video and graphics event can be played either by itself or stacked in layers, but the text event cannot be played by itself.



#### Operation with More than One Playlist

If there is more than one playlist for the same period on the same day, the playlist that was sent later has the higher priority. The Scheduling Application ignores the other(s). When playout has already started, however, the playlist currently being used for playout would not be replaced with the new one.

The following rules are applied when there is more than one playlist (A and B) for a certain period:

- Playout of a playlist (A) will stop 10 seconds before the start time of another playlist (B) that was sent later than (A).  
The playlist loading screen specified by the network player (default: solid black) is displayed for about 10 seconds, then playout of playlist (B) starts.

- If playout of playlist (B) ends within the playout duration of playlist (A), playout of playlist (A) will resume about one minute later.  
The network player cannot start playing from the middle of a video file, though. If the timing of the resumption of playlist (A) is in the middle of a video event, actual playout will resume from the next event.

**Example)**

If there are the following three playlists for the same day, Playlist-1 is ignored, and the network player plays Playlist-2 and Playlist-3 from 10:00:00 to 12:00:00 as shown below.

	<b>Playlist-1</b>	<b>Playlist-2</b>	<b>Playlist-3</b>
Time when the playlist transfer completed	09:30:00	09:45:00	09:50:00
Start time of the first event	10:00:00	10:00:00	11:00:00
End time of the last event			12:00:00
	15:00:00	15:00:00	

The diagram shows a horizontal timeline with vertical markers at 10:00:00, 10:59:50, 11:00:00, 12:00:00, and After 12:01:00. A bar labeled 'Playlist-2' spans from 10:00:00 to 10:59:50. A shaded bar labeled 'Playlist-3' spans from 11:00:00 to 12:00:00. Another shaded bar labeled 'Playlist-2' starts at 'After 12:01:00'.

Playout of Playlist-2 subsequently resumes, but the actual time of resumption varies depending on the type of the corresponding event:

**In the case of a graphics, or graphics and text event(s):** playout of Playlist-2 will resume about one minute after the end of Playlist-3 playout.

**In the case where a video event is included:** as the network player cannot start playing from the middle of a video file, actual playout of Playlist-2 will resume from the next event. When there is a 30-minute video event from 12:00:00, for example, playout will start with the next event, the one that will be started from 12:30:00.

**What is a Playlist Module?**

There are special playlists that are made to be inserted into another playlist. They are referred to as "playlist modules." A playlist module is also a list in which the materials are arranged in order of playout, and it is mainly used to bundle some events.

A playlist module is made in the same procedure as a normal playlist, but it has a check mark in the Playlist Module check box in the Properties dialog box. The difference between a playlist module and a normal playlist is that a playlist module has no data for a playout period and no automatic deletion date.

A playlist module is useful when you need to play the same contents in various situations. The system even provides a simple playlist editing function (Edit Playlist (Module List) window) that enables you to create playlists simply by listing the playlist modules you want to use to make the playlist.

When you are using the Sony BZNP-A1 software for content authoring, timeline data is converted to a playlist module so that the BZNP-100 can create a playlist with it and distribute to the network players.

**Note**

- Only the events contained in the inserted playlist modules are sent to the network players. In the case of the Scheduling Application, do not insert any normal playlist that has start and end date data into another playlist. Otherwise, the network player will receive two playlists for playout at the same time on the same day, and this will cause a problem upon playout.
- Playlist modules cannot be nested. If you insert module "B" that already includes module "A" into the current playlist, all B's events including A's are inserted, but the comment lines corresponding to module "A" are ignored.  
A playlist accommodates more than one playlist module, provided they are not nested.

## Creating a New Playlist

Proceed as follows to create a new playlist or playlist module.

- 1** Click [Edit Playlist] on the main menu.  
Or, select the Playlist tab in the Material Management window, then click [New].  
The Edit Playlist window appears in either case.
- 2** Select the network player group for which you are creating a playlist from the Destination drop-down list box.
- 3** Using a drag & drop operation, add the materials to be played out from the Video, Graphics, and Text material lists shown in the upper-half of the window to the lower playlist, one by one.  
Edit the playlist as necessary. See the topics in "Editing Functions in the Edit Playlist Window" section for details.
- 4** Click [Properties].  
The Properties dialog box appears.
- 5** In the case of the Scheduling Application, specify the start time of the first event in the Start Time spin box. (Note that the start time of the first event must be before 24:00:00.) The network players automatically start payout at the specified time.  
When creating a "playlist module" that is to be inserted into other playlists, leave the start time set at 00:00:00 so as not to specify its start time. Any other start time has higher priority when a playlist module is inserted into another playlist.  
This step is not necessary for the Presentation Application.

### Note

The network player does not support a summer time management function. Be careful to specify the start time if your country uses a summer time system.

- 6** Check the Repeat check box when you want to repeat payout of the playlist, then modify the daily end time of the repetition in the Repeat End Time spin box, if necessary.  
When creating a "playlist module," check the Playlist Module check box.

### Note

Repeated payout is not possible if there is any break in the playlist, or if you are creating a playlist module.

And, in the case of the Scheduling Application, repeated payout will automatically end 10 seconds before the start time of the next playlist.

In the case of the Scheduling Application, be sure that any playlist module (a playlist inserted in another playlist) has a check mark in the Playlist Module check box, so that it has no start and end date data. Otherwise, the network player will receive two playlists for payout at the same time on the same day, and this will cause a problem upon payout.

- 7** Enter the type and title of this playlist into the respective text boxes, then click [OK].  
Note that the Scheduling Application also enables you to specify the payout period of the playlist in the Properties dialog box.  
See the explanation of the Properties dialog box for details.
- 8** Click [OK] in the Edit Playlist window to save the playlist.  
A confirmation message appears.
- 9** Click [Yes].  
The system saves the playlist.

**Hint**

You can preview the playlist from using the procedure described in "Checking a Playlist."

**Undoing the last Operation**

The Edit Playlist window always keeps the playlist just before the last editing operation, so that you can cancel the last operation. Hold the Ctrl key down and press the Z key to cancel the last operation.

**Specifying the Date for Automatic Deletion of a Playlist (Presentation Application Only)**

Right-click the desired playlist in the Material Management window, then click [Set Delete Date] or [Clear Delete Date]. When you click [Set Delete Date], a calendar appears. Select the date for deletion, then click [OK].

In the case of the Scheduling Application, the day after the playout end date is automatically specified as the date for automatic deletion. You cannot change it. Playlist modules that are shown in blue or purple in the Material Management window have no automatic deletion date data, as they would never be sent to the network players.

**Note**

To use the automatic deletion function of the network player, specify "Yes" for "Activate 'Automatic Delete'" on the "System Administrator Setup" screen of the network player.

## Creating a New Playlist by Listing Playlist Modules

When your playlists are combinations of routine programs, you can create playlist modules of the programs, and list them to create daily playlists.

The system provides the Edit Playlist (Module List) window for playlists that consist only of the existing playlist modules. It also allows you to add the external device control events to the playlist.

### Hint

- The Edit Playlist (Module List) window does not allow you to add video, graphics, or text events. Use the normal Edit Playlist window to add discrete events.
- See "Creating a New Playlist" for details on how to create a playlist module.

- 1** Select the Playlist tab in the Material Management window, then click [New (Module List)]. The Edit Playlist (Module List) window appears.
- 2** Select the network player group for which you are creating the playlist from the Destination drop-down list box.
- 3** Using a drag & drop operation, add the desired playlist modules from the playlist module list shown in the left-half of the window to the right playlist, one by one.  
The external device control commands are added to the playlist as event lines, in the same way as in playlist modules. Right-click the line immediately below the location where you want to insert the external device control event, and select the desired external device control command on the sub-menu of [Insert Control (External Device)]. You can also select the desired external device control command on the Control tab of the Material Management window, then add it using a drag & drop operation. After adding an external device control event, if necessary, double-click its Start Time column, and adjust the time for device control.  
Edit the playlist as needed. See the explanation in "Editing Functions in the Edit Playlist (Module List) Window" for details.
- 4** Click [Properties].  
The Properties dialog box appears.
- 5** In the case of the Scheduling Application, specify the start time of the first event in the Start Time spin box. (Note that the start time of the first event must be before 24:00:00.) The network players automatically start playout at the specified time.  
When creating a "playlist module" that is to be inserted into other playlists, leave the start time set at 00:00:00 so as not to specify a start time. Any other start time has higher priority when a playlist module is inserted into another playlist.  
This step is not necessary for the Presentation Application.

### Note

The network player does not support a summer time management function. Be careful to specify the start time if your country uses a summer time system.

- 6** Check the Repeat check box when you want to repeat playout of playlist, then modify the daily end time of the repetition in the Repeat End Time spin box, if necessary.  
When creating a new "playlist module," check the Playlist Module check box.

### Note

Repeated playout is not possible if there is any break in the playlist.

And, in the case of the Scheduling Application, repeated playout will automatically end 10 seconds before the start time of the next playlist.

Playlist modules cannot be nested. If you insert module "B" that already includes module "A" to the current playlist, all B's events, including A's, are inserted, but the comment lines corresponding to module "A" are ignored.

- 7** Enter the type and title of this playlist in the respective text boxes, then click [OK].  
Note that the Scheduling Application also enables you to specify the playout period of the playlist in the Properties dialog box.  
See the explanation of the Properties dialog box for details.
- 8** Click [OK] in the Edit Playlist (Module List) window to save the playlist.  
A confirmation message appears.
- 9** Click [Yes].  
The system saves the playlist.

#### **Hint**

You can preview the playlist using the procedure described in "Checking a Playlist."

#### **Undoing the last Operation**

The Edit Playlist (Module List) window always keeps the playlist just before the last editing operation, so that you can cancel the last operation. Hold the Ctrl key down and press the Z key to cancel the last operation.

#### **Specifying the Date for Automatic Deletion of a Playlist (Presentation Application Only)**

Right-click the desired playlist in the Material Management window, then click [Set Delete Date] or [Clear Delete Date]. When you click [Set Delete Date], a calendar appears. Select the date for deletion, then click [OK].

In the case of the Scheduling Application, the day after the playout end date is automatically specified as the date of automatic deletion. You cannot change it. Playlist modules that are shown in blue or purple in the Material Management window have no automatic deletion date data, as they would never be sent to the network players.

#### **Note**

To use the automatic deletion function of the network player, specify "Yes" for "Activate 'Automatic Delete'" on the "System Administrator Setup" screen of the network player.

## Editing or Deleting a Playlist

### Hint

The same operation can be applied to the "playlist modules" that are made to be inserted into another playlist.

### Opening a Playlist

Open the playlist as follows to modify or edit it.

- 1 Click [Material Management] on the main menu to open the Material Management window, then select the Playlist tab.
- 2 Select the network player group in which the playlist to be opened was registered from the Destination drop-down list box.
- 3 Right-click the playlist to be opened, then click [Edit] or [Edit (Module List)] on the menu. The Edit Playlist window or Edit Playlist (Module List) window opens containing the selected playlist data.
- 4 Modify and edit the playlist as desired, then click [OK].  
See the explanations of "Editing in Edit Playlist Window" or "Editing Functions in the Edit Playlist (Module List) Window" for details.  
To modify the type, title, and/or playout period, click [Properties], modify the desired item(s) in the Properties dialog box, then click [OK].

### Deleting a Playlist

The playlists on the network players are automatically deleted on the specified date so that the network players will not be overfilled.

Proceed as follows to manually delete playlists from a network player or PC.

- 1 Click [Material Management] on the main menu, then select the Playlist tab.
- 2 Click the PC File Management option button to delete playlists stored on the PC.  
To delete playlists stored on a network player, click the NSP-100 Remote File Management option button, then select the desired network player from the NSP-100 drop-down list box. The list of playlists stored in the selected location appears.
- 3 Select the playlist(s) to be deleted.  
To select more than one playlist, hold down the Ctrl key and click them one by one. To select a range of playlists, hold down the Shift key and click both the first and last playlists in the range.
- 4 Right-click the selected playlist(s), then click [Delete] on the menu.  
Or, press the Delete key on the keyboard.  
A confirmation message appears.
- 5 Click [Yes].

### Copying a Playlist Created for Another Network Player Group

- 1 Click [Material Management] on the main menu, then select the Playlist tab.
- 2 Select the network player group for the desired playlist from the Destination drop-down list box.
- 3 Right-click the desired playlist, then click [Copy] on the menu.
- 4 Select the desired network player group from the Destination drop-down list box. The playlists displayed change depending on the network player group selected.
- 5 Right-click anywhere on the list, then click [Paste] on the menu. The copied playlist is registered in the selected network player group.



**Hint**

Displaying the playlist in the Edit Playlist window, switching the Destination drop-down list box to the desired network player group, then clicking [OK] also allows the playlist to be used for the selected network player group.

**Specifying the Date for Automatic Deletion (Presentation Application Only)**

Right-click the desired playlist in the Material Management window, then click [Set Delete Date] or [Clear Delete Date]. When you click [Set Delete Date], a calendar appears. Select the date for deletion, then click [OK].

In the case of the Scheduling Application, the day after the playout end date is automatically specified as the date of automatic deletion. You cannot change it. Playlist modules that are shown in blue or purple in the Material Management window have no automatic deletion date data, as they would never be sent to the network players.

**Note**

To use the automatic deletion function of the network player, specify "Yes" for "Activate 'Automatic Delete'" on the "System Administrator Setup" screen of the network player.

## Checking a Playlist

### Previewing the Playlist

You can preview playlists on a network player using the urgent playout function, provided you have a network player and monitor available for previewing. Preview of each piece of material is possible, too, in the same way.

- 1 Click [Material Management] on the main menu to open the Material Management window.
- 2 Select the tab of the material or playlist to be previewed.
- 3 Select the PC File Management option button, and select the destination network player group in the Destination drop-down list box.
- 4 Click the desired material or playlist, then click the play button in the Urgent section. The system sends the selected material (or the playlist and the necessary materials) to the network player and urgent playout starts.
- 5 Click the stop button in the Urgent section to stop the preview.

### Checking the List

The Playlist tab in the Material Management window or the playlist module list in the Edit Playlist (Module List) window only shows limited information on the playlists, such as the titles. The following procedure enables you to check the events in the playlists.

- 1 Right-click the desired playlist or playlist module, then click [View] on the menu. The View Playlist window opens with the event data of the playlist/playlist module. A playlist displayed in the View Playlist window is similar to that in the Edit Playlist window, though event duration is not shown. External device control events, if included in the playlist, are displayed with their titles on the rightmost column, not the mark. When a "playlist module" is inserted, it appears as a light-gray comment line with a closed arrow mark (✕). Double-clicking this mark expands the module, and its events appear enclosed by two light-gray comment lines whose Start Time columns have arrow marks (↓ and ↑). The expanded playlist module can be collapsed by double-clicking the arrow mark on its upper comment line.

#### Hint

If an event title is longer than the list width, hence it is not fully displayed, move the mouse pointer over it. The entire title text pops up.

## Editing Functions in the Edit Playlist Window

### Adding Video, Graphics, and Text Events to a Playlist

There are respective columns for video, graphics, and text events in the playlist. Add the materials to be played as events in the order of playout, as follows. The leftmost column shows the start time of each event.

#### Hint

- A green background color for video and graphics materials means that the corresponding NSP formatted files are not yet ready.
- The length of a playlist should be less than 23 hours 58 minutes. The maximum number of events per a playlist is 3,000.

Note that each network player can retain up to the following number of pieces of material:

Material	Video	Graphics	Text
Maximum number	500	500	100

- 1 Select the desired material on the Video, Graphics, or Text material list displayed in the upper-half of the Edit Playlist window.
- 2 Drag the selected material to the playlist and drop it at the desired position. It is added or pasted there as an event, depending on the drop position.

#### Note

The playlist does not accept text materials as independent events, because a text event cannot play by itself. The text materials can only be pasted to a line where video and/or graphics event(s) are already assigned. If an independent text event occurs, it appears in red on the playlist. The system does not allow you to save such a playlist.

- 3 When adding graphics or text material, specify the desired event duration, if necessary. Double-click the duration column, modify the duration, then press the Enter key. Note that it is impossible to modify the duration of a video event.

### Where to Drop Material

To add the event:	you should drop the material:
at the top of a playlist	above the first event in the playlist (the column title line).
at the end of a playlist	below the last event of the playlist (the gray strip at the bottom).
In a location where another type of event is assigned	on the same line as the desired event.
between two events	on the lower of the two events (while holding the Ctrl key).

### Default Duration of an Event

The duration of a video event is same as that of the corresponding video material. It cannot be changed.

In the case of a graphics event, it would be 10 seconds. When a graphics event is added to the line of a video event, however, the duration would be the same as that of the

video event.

In the case of a text event, the duration would also be the same as that of the video or graphics event on the same line.

**Note**

If the text type is scroll or scroll in, note that the default text event duration would not be related to the estimated duration that is necessary to entirely display the text material. The duration necessary to entirely display the text material is shown in the Material Management window.

**Adjusting the Duration of a Text or Graphics Event**

To adjust the duration of a graphics/text event to that of a series of video events, perform either of the two procedures described in the following examples:

- (1) To add a new piece of text material so that it will play along the No.0013 to 0017 video events, select the range of lines of text that corresponds to the blue framed video events (painted in cyan in the figure), then add the desired piece of text material there with a drag & drop operation.
- (2) To adjust the duration of the No.0012 graphics event to the green framed video events, select the range of lines of graphics that corresponds to the green framed video events (painted in lime green in the figure), right-click the selection, then click [Change Duration] on the menu.

In either method, hold down the Shift key and click both the first (No.0012 or 0013) and last (No.0017) lines to select the entire range.

Start Time	No.	Title	Duration	No.	Title	Duration	No.	Title	Duration	Ctrl
12:26:42	0011	New Products	00:02:38:03	0011			0011			
12:29:20	0012	Sales Team	00:02:38:03	0012	BaseBall No. 8	00:02:38:03	0012	Canoe Company URL	00:02:38:03	
12:31:59	0013	Training Video	00:02:38:03	0013			0013			
12:34:37	0014	Off-site excursion	00:02:38:03	0014			0014			
12:37:15	0015	Golf Tours	00:02:38:03	0015			0015			
12:39:53	0016	Scuba Tours	00:02:38:03	0016			0016			
12:42:32	0017	White Water Rafting Tours	00:02:38:03	0017			0017			
12:45:10	0018	New Jeans	00:02:38:03	0018			0018	White Water Rafting Tour Hours	00:02:38:03	
12:47:48	0019			0019			0019			
12:47:50										

These procedures can also be useful for the following purposes:

- To adjust the duration of a text event to that of a series of video and/or graphics events.
- To adjust the duration of a graphics event to that of a series of video events.

**Note**

- This operation is not available if there is an event already specified within the range, except for the top line.
- If there is a playlist module within the selected range, adding a text or graphics event (or adjusting its duration) will undo the module, and the light-gray comment lines that enclosed the module will disappear. Because this operation modifies the content of the module, it is no longer the same as the original playlist module.

**Arranging the Layout of the Screen**

You can specify the size (only for video) and position of video and/or text displayed on a piece of graphics material. See "Positioning Video and/or Text" for details.

When only video, or video and text is/are displayed, the video always appears full size.

### Using Only the Audio Part of a Piece of Video Material as an Event

Add the desired video material to the playlist, then right-click that event and click [Use Audio Only] on the menu.

The color of the event data changes to blue to indicate that it is an audio event.

To return it to a normal video event, right-click the event, then click [Use Audio Only] again.

### Undoing the last Operation

Hold the Ctrl key down and press the Z key to cancel the last operation.

## Including an External Device Control Event in a Playlist


The playlist accommodates the external device control commands as events to control plasma display panels or other devices connected to the network players, but the procedure for adding the control commands is different from that of video or graphics materials.

#### Hint

Upon playout, the network player sends control signals to connected devices when the corresponding event plays.

As many devices need some time to perform the intended operation after receiving the control signal, consider the time lag when including an external device control command in a playlist.


### Adding to a Video or Graphics Event Line

- 1 On the line of the desired event, right-click the Control column.  
A menu appears.
- 2 Point to [Control (External Device)] on the menu.  
A sub-menu listing the registered external device control commands appears.
- 3 Click the desired device control.  
The device control mark () appears in the Control column for the selected event.

#### Note

When including an external device control command in an event, generally, the line of the specified video, graphics and/or text event changes to two-line width. The system considers that any external device control event has a two-second duration. Video, graphics, and/or text events are longer in most, hence the playlist widens the line to show there is a shorter event having the same event number.

### Adding to a Line as an Independent Event

- 1 Right-click the line immediately below the location where you want to insert the external device control event.  
A menu appears.
- 2 Point to [Insert Control (External Device)] on the menu.  
A sub-menu listing registered external device control commands appears.
- 3 Click the desired external device control command.  
A new line is inserted, and the device control mark () appears in the Control column.
- 4 Double-click the Start Time column of the line, and adjust the time of device control.

#### Hint

You can also select the desired external device control command on the Control tab of the Material Management window, then add it using a drag & drop operation.

#### Modifying or Deleting an External Device Control Event Included in a Playlist

To replace an external device control command with another one, right-click the device control mark to be replaced, and point to [Control (External Device)]. The sub-menu shows a check mark for the external device control command currently included in the event. Select the desired one on the menu.

To delete an external device control command, right-click the device control mark in the Control column, then click [Delete] on the menu.

#### Undoing the last Operation

Hold the Ctrl key down and press the Z key to cancel the last operation.

### Moving and Deleting Events

#### Moving or Copying Events

A "drag & drop" operation moves the selected playlist events to the desired position, just like when adding the materials to the playlist.

A normal drag & drop operation pastes the event in the dropped position. To insert the event(s) between two events, hold down the Ctrl key and drag & drop them to the event that is immediately below the insertion point.

Also, you can use Ctrl+C (Holding down the Ctrl key and pressing the C key) to copy the selected events to the Windows Clipboard. To paste the events on the Clipboard, specify the position on the playlist and use Ctrl+V.

#### Note

- Text material events cannot be independent events, because a text event cannot play by itself. They can only be pasted to a line where a video and/or graphics event(s) are already assigned. If an independent text event occurs, it appears in red on the playlist. The system does not allow you to save such a playlist.
- To select the video, graphics and/or text events having the same event number as a set, click the corresponding Start Time column.

#### Changing the Material for an Event

Paste the desired material over the event.

The material assigned to the event is overwritten with the newly pasted material.

#### Deleting Events

Right-click the event to be deleted on the playlist, then click [Delete] on the menu.

#### Undoing the last Operation

Hold the Ctrl key down and press the Z key to cancel the last operation.

### Inserting a Playlist Module

The system enables you to insert a playlist module into the currently edited playlist. All events of the selected playlist module are inserted as a block.

**Note**

In the case of the Scheduling Application, be sure that any playlist module has a check mark in the Playlist Module check box, so that it has no start and end date data. Otherwise, the network player will receive two playlists for playout at the same time on the same day, and this will cause a problem upon playout.

- 1 Click [Material Management] on the main menu to display the Material Management window, then select the Playlist tab.
- 2 Right-click the playlist module (shown in blue or purple) to be inserted, and click [Copy] on the menu.  
All events of that playlist module are copied.
- 3 In the Edit Playlist window, right-click the line that comes immediately after the inserted playlist module, then click [Paste Playlist Module] on the menu.  
The copied playlist module is inserted. It appears as a light-gray comment line with a closed arrow mark (✕). The title of the inserted module is displayed on the comment line, but you can modify it by double-clicking the comment, as necessary.  
Double-clicking the closed arrow mark expands the module, and its events appear enclosed by two light-gray comment lines whose Start Time columns have arrow marks (⇩ and ⇧). The expanded playlist module will be collapsed by double-clicking the arrow mark on its upper comment line.

**Note**

Playlist modules cannot be nested. If you insert module "B" that already includes module "A" to the current playlist, all B's events including A's are inserted, but the comment lines corresponding to module "A" are ignored. A playlist accommodates more than one playlist module, provided they are not nested.

**Deleting All the Events of the Inserted Playlist Module**

Right-click either of the comment lines, then click [Delete] on the menu.

**Editing Events of an Inserted Playlist Module**

You can freely edit or delete the events of an inserted playlist module. Also, it is possible to add a new event among those events (between the comment lines for the inserted playlist module).

Because the events of the inserted playlist module are no longer the same as that of the original one, the comment lines for the inserted playlist module will be deleted after editing is completed.

**Note**

The comment lines for the inserted playlist module indicate that the in-between events belong to a playlist module. However, those events will not be automatically changed if the original playlist module is modified after insertion.

**Undoing the last Operation**

Hold the Ctrl key down and press the Z key to cancel the last operation.

## Inserting a Break Event (Presentation Application)

The Presentation Application allows you to insert a break event, a point at which playout pauses, in the playlist. Playout of the playlist resumes from the event following to the break event when you start playout using the remote controller of the network player.

- 1 Right-click the event that comes immediately after the break, then click [Insert Break] on the menu.

A break event is inserted. It appears as a gray strip in the playlist. The start time of the event that is immediately after the break becomes 00:00:00.

### Deleting a Break Event

Right-click the break event (gray strip), then click [Delete] on the menu.

### Undoing the last Operation

Hold the Ctrl key down and press the Z key to cancel the last operation.

## Changing the Start Time of an Event (Scheduling Application)

There are two purposes to changing the start time.

The first is to make a break (during which nothing is played) during playout. The software always calculates the start time of each event according to the start time of the first event and the event's duration. Shifting the time displayed in the Start Time column to a later time makes a break. In this case, the start time of all events on the same line are simultaneously changed.

The second purpose is to adjust the start time of a single event. In this case, only the start time of the selected event changes, and no other event is affected.

### Changing the Start Time to Make a Break

#### Note

The start time of an event can be from 00:00:00 to 47:59:59, however, the start time of the first event in a playlist must be before 24:00:00.

- 1 Double-click the Start Time column of the event that should be played immediately after the break.

The start time can now be edited.

- 2 Add the duration of the break to the current start time, adjust the start time to accommodate the change, then press the Enter key.

A gray strip that indicates a break appears immediately above the selected event. All the start times of the subsequent events are recalculated.

### Changing the Start Time of the Selected Event Only

#### Note

This operation adjusts the start time of an event and cannot be used to move the event on the playlist.



- 1** Right-click the event whose start time should be changed, then click [Change Start Time] on the menu.  
The Change Start Time dialog box showing the current start time appears.
- 2** Change the start time as desired, then click [OK].

### Undoing the last Operation

Hold the Ctrl key down and press the Z key to cancel the last operation.

## Positioning Video and/or Text

The system enables you to specify the size (only for video) and position of a video and/or piece of text displayed on a piece of graphics material.

### Note

- When video and text events are played simultaneously on a piece of graphics material, position the video and text so that they do not overlap. If they are overlapped, the video material is displayed over the text.
- The unit used in the Display Setup dialog box is pixels, and the origin is the upperleft corner of the screen. You are not allowed to have more than one user setting whose value is the same.  
If you select the "over-scan" display type upon group setting, the system adjusts the pre-defined positions, such as "Upperleft" and "Lower," so that the video and text can be correctly displayed on over-scan displays. The system also indicates the area that is visible with the over-scan displays on the screen in the Display Setup dialog box.  
Note that if you use both over-scan and under-scan displays in a single network player group, video and text may not be displayed at the expected position, on some displays.

### Specifying the Default Positions

- 1** Click [Default Display Setup] in the Edit Playlist window.  
The Display Setup dialog box appears.
- 2** Specify the default positions.  
Select the pre-defined settings for the video position, size, and text position, or enter the desired values in the text boxes.  
You can also move or change the size of the text/video on the picture of a monitor displayed in the Display Setup dialog box to specify the settings.  
Check the Preserve Aspect Ratio check box to fix the video aspect ratio at 3:2 (NTSC) or 5:4 (PAL).
- 3** Click [OK].  
The settings are saved as the default and the Display Setup dialog box closes. The new position settings are automatically specified as the default settings when you add a video and/or text event to the playlist.

### Positioning Each Event

- 1** Right-click the desired event in the Edit Playlist window, then click [Display Setup] on the menu.  
The Display Setup dialog box appears.

**2** Specify the position.

Select the pre-defined settings for the video position, size, and text position, or enter the desired values in the text boxes.

You can also move or change the size of the text or video on the picture of a monitor displayed in the Display Setup dialog box to specify the settings.

Check the Preserve Aspect Ratio check box to fix the video aspect ratio at 3:2 (NTSC) or 5:4 (PAL).

**3** Click [OK].

The settings are specified in the selected event and the Display Setup dialog box closes.

**Hint**

Clicking [Apply] before clicking [OK] shows you the result. This is helpful when entering the position or size value.

**Undoing the last Operation**

Hold the Ctrl key down and press the Z key to cancel the last operation.

**Saving the Position Setting as a Selection**

The system allows you to save up to 30 settings each for the video position, video size, and text position. This is useful to use the same position setting in many events.

- 1** In the Display Setup dialog box, enter the desired name for the setting in the Video Position, Video Size, or Text Position drop-down list box.
- 2** Enter the desired setting in the corresponding text box(es).  
You can move or change the size of the text or video on the picture of a monitor displayed in the Display Setup dialog box to specify the settings, too.
- 3** Click [Save] corresponding to the item(s).

**Note**

- When you click [OK], the system automatically saves the setting with the name "User defined," even if you do not save it.
- If you do not want to apply the saved setting(s) to the default, or the event selected to open the dialog box, click [Cancel], not [OK] to close the dialog box.
- To delete a saved setting, select it in the Display Setup dialog box, then click the corresponding [Delete].

## Editing Functions in the Edit Playlist (Module List) Window

Editing a playlist in the Edit Playlist (Module List) window is similar to operation in the Edit Playlist window.

### Moving or Copying Modules or External Device Control Events

A "drag & drop" operation moves the selected playlist modules to the desired position, just as it does when adding playlist modules to a playlist.

A normal drag & drop operation pastes the module in the dropped position. To insert the module between two modules, hold down the Ctrl key and drag & drop it to the one that is immediately below the insertion point.

Also, you can use Ctrl+C (Holding down the Ctrl key and pressing the C key) to copy the selected playlist modules to the Windows Clipboard. To paste the modules on the Clipboard, specify the position on the playlist and use Ctrl+V.

The external device control events can also be moved in the same way.

### Inserting a Break (during which nothing is played)

In the case of the Presentation Application, right-click the module that comes immediately after the break, then click [Insert Break] on the menu.

A break event is inserted. It appears as a gray strip in the playlist. The start time of the module that is immediately after the break becomes 00:00:00.

In the case of the Scheduling Application, double-click the Start Time column of the module that should be played immediately after the break, and add the duration of the break to the current start time, adjust the start time to accommodate the change, then press the Enter key.

A gray strip that indicates a break appears immediately above the selected module. All the start times of the subsequent modules are recalculated.

#### Note

The start time of a module can be from 00:00:00 to 47:59:59 (NTSC) or 47:59:49 (PAL), however, that of the first module of a playlist must be before 24:00:00.

### Replacing an External Device Control Event

To replace an external device control command with another one, right-click the device control event to be replaced, and point to [Change Control (External Device)]. The sub-menu shows a check mark for the external device control command currently assigned as the event. Select the desired one on the menu.

You can also select the desired external device control command on the Control tab of the Material Management window, then overwrite it using a drag & drop operation.

### Deleting a Module, External Device Control Event or Break

Right-click the module, external device control event, or break event (gray strip) on the playlist, then click [Delete] on the menu.

### Undoing the last Operation

Hold the Ctrl key down and press the Z key to cancel the last operation.

---

## Transfer to the Network Players

### Sending Playlists to Network Players

When the playlist and the necessary materials are ready, send them to the network players. Sending a playlist automatically sends the necessary materials, too. The Scheduling Application automatically sends everything that is necessary for playout on the day when you click the Send button on the main menu after specifying the date and destination network player group.

#### Hint

- The system does not send the playlists and materials if they are already stored on the network player.
  - The system provides an automatic playlist sending function that can be enabled in the Setup window. Once this function is enabled, sending playlists and materials is not necessary during normal operation. See "Setting Up the Software" for details.
- 1** Click [Material Management] on the main menu if the Material Management window is not open.
  - 2** Select the Playlist tab.
  - 3** Select the destination network player group from the Destination drop-down list box. The playlists created for the selected network player group appear.
  - 4** Select the playlist(s) to be sent.  
To select more than one playlist, hold down the Ctrl key and click them one by one. To select a range of playlists, hold down the Shift key and click both the first and last playlists in the range.
  - 5** Click [Send].  
The system starts transfer of the playlists. It enables you to check the transfer status in the Transfer Status window. See "Checking Transfer Status" for details.

### Sending Playlists for a Specific Day (Scheduling Application Only)

- 1** On the main menu, display the desired date on the calendar by clicking its right and left arrow buttons.
- 2** Select the destination network player group in the drop-down list box located under the calendar.

#### Hint

Colors used for the calendar have the following meanings. Point to a date with the mouse pointer to see the situation written in text.

<b>Background</b>	<b>Date</b>	<b>Meaning</b>
White	Gray or Brown	Non-playout day.
Gray	Black or Red	Playlist not yet created.
Green	Black or Red	Playlist being edited or already edited.
Light Blue	Black or Red	Playlists and materials are being sent.
Blue	Black or Red	Playlists and materials successfully sent.
Yellow	Black or Red	Necessary materials not yet sent.
Red	Black or Red	A transfer error occurred.

- 3** Click the desired date on the calendar, then click [Send].

## **Sending Materials to Network Players**

The system also enables you to send materials without accompanying playlists to the network players. However, you can only send one type of material at a time. Repeat the following procedure to send different types of materials.

- 1** Click [Material Management] on the main menu if the Material Management window is not open.
- 2** Select the tab of the desired material.
- 3** Select the destination network player group from the Destination drop-down list box.
- 4** Select the material(s) to be sent.  
To select more than one piece of material, hold down the Ctrl key and click them one by one. To select a range of materials, hold down the Shift key and click both the first and last piece of material in the range.
- 5** Click [Send].  
The system starts transfer of the materials. It enables you to check the transfer status in the Transfer Status window. See "Checking Transfer Status" for details.

## Checking Transfer Status

Sending many videos and/or sending items to many network players is especially time-consuming. The Transfer Status window enables you to check how much the last transfer has progressed and whether or not an error has occurred.

The Transfer Results window that can be opened from the Transfer Status window shows the latest transfer results of all network players respectively.

### Note

The Transfer Status and Transfer Results windows do not display the results of automatic sending for scheduled playlists.

#### 1 Click [Transfer Status].

The Transfer Status window appears. Transfer status for each network player in the group to which playlists and materials were sent last is shown by its background color.

Color	Status
Yellow	Necessary materials not yet sent.
Light Blue	Now being transferred.
Blue	Successfully transferred.
Red	An error occurred.

### Note

The Transfer Status window displays information on the group to which playlist/material(s) were sent last. It will be cleared by other data transfer operations, such as obtaining a playout log, remote controlling an NSP-100 network player from the Material Management window, and NSP-100 setup.





### Hint

Click [Abort] to cancel transfer of playlists and materials. This stops transfer to the network player that is currently receiving playlists and materials, and cancels transfer to the rest of the network players.

## Checking Transfer Results of All Network Players

Click [Transfer Results] in the Transfer Status window.

The Transfer Results window opens, and the result of the last playlist/material transfer to each network player is displayed.

Mark	Result
(None)	No transfer done.
	Transfer successful.
	Connection error occurred.
	Transfer error occurred.
	There is unsent material.

---

## Playback

### Normal Playback

Normally, after sending the prepared playlists and materials to the network players, there are no further operations you have to carry out with this software.

#### **In the Case of the Presentation Application**

The playback is controlled by the remote controller of each network player. Refer to the operation manual of the network player for details.

#### **In the Case of the Scheduling Application**

Each network player automatically starts playback according to the period and time specified in the playlist.

#### **Note**

- The network player does not support a summer time management function. Be careful to specify the start time if your country uses a summer time system.
- In the case of NTSC video, the system regards one second as 30 frames of video signal although it is approximately 29.97 frames (non-drop frame mode). Hence the actual length is longer than the duration indicated for such a piece of video material. This error is approximately two frames for one minute and 108 frames (3.3 seconds) for one hour. The system adjusts this error to indicate the start times of the events on the playlist, but there still is a small amount of error (less than one second) between the indication and the actual start time.
- The playlist that was sent later has the higher priority. For example, if the playlist (P0000001) whose playback time is 7/1/2002 10:00:00 - 20:00:00 was sent before the playlist (P0000002) whose playback time is 7/1/2002 12:00:00 - 13:00:00, the system would stop playback of P0000001 around 11:59:50, play P0000002 between 12:00:00 and 13:00:00, prepare to resume playback of P0000001, then resume the rest of P0000001. If P0000002 is sent before P0000001, however, P0000002 would not be played out.

#### **When a Power-on Start Playlist or a Play Button Start Playlist is Specified**

Each network player may have the following two special playlists:

- Power-on start playlist  
Automatically starts playback when the network player is powered on.
- Play button start playlist  
Starts when the play button of the remote controller is pressed during standby. See "Specifying the Special Playlists of the Network Players" for details. You can also choose the special playlists on each network player. Refer to the operating instructions of the NSP-100 Network Player for details.

**Hint**

In the case of the Scheduling Application, scheduled playlists have the highest priority. Playout of a power-on start playlist or a play button start playlist will be terminated approximately 10 seconds before the start time of a scheduled playlist.

In any case, you can check the network player status. Also, the network player records a playout log. You can obtain this playout log from each network player and check the playout status. See "Checking the Network Player Status" and "Checking the Playout Log" for details.



## Urgent Payout

Besides the normal payout function for which you have to send the necessary playlist and materials to the network players beforehand, there is "urgent payout" function. It sends selected piece(s) of material (and a playlist) and makes the network players play it as soon as possible. Any pre-prepared material (and playlist) can be used. You can also use materials or playlists that are already stored on the network player for urgent payout.

### Note

The urgent payout function interrupts payout currently being carried out on a network player. Also, scheduled payout will not start during urgent payout. Check the network player status in the NSP-100 Status window before starting urgent payout, and click the stop button at the end.

### Hint

- You can check the network player status. See "Checking the Network Player Status" for details.
- For text material, you can enter text and use it for urgent payout, as well as using previously registered text material. See the following "Creating Text Material for Urgent Payout" for details.
- You can use this function for preview of materials and playlists on a network player, provided you have a monitor connected to the network player near you.

- 1** Click [Material Management] on the main menu to open the Material Management window.
- 2** Select the PC File Management or NSP-100 Remote File Management option button, depending on the location where the material or playlist used for urgent payout is stored.
- 3** Select the tab of the material or playlist to be used for urgent payout.
- 4** Select the destination network player group on the Destination drop-down list box when the PC File Management option button is selected.  
Select the network player to be subject to urgent payout from the NSP-100 drop-down list box, then click [Update].
- 5** Click the desired material or playlist, then click the play button in the Urgent section.  
When material or a playlist stored on the PC is selected, the system sends the selected material (or playlist and the necessary materials) to the network players of the selected group. Each network player starts payout as soon as it receives the entire piece of material/playlist.  
When the material or a playlist is stored on the network player, urgent payout starts immediately on the selected network player.

### Stopping Urgent Payout

Click the stop button in the Urgent section in the Material Management window. Payout of the playlist that was interrupted by the urgent payout does not automatically start if it has been sent from the Presentation Application.

If it has been sent from the Scheduling Application, payout may restart. The network player restarts normal payout according to the current time and the start times assigned to each event.

**Note**

- Urgent playout can only be stopped by clicking the corresponding stop buttons. Make sure to click the stop button after using the urgent playout function because only the BZNP-100 supports stopping of urgent playout.
- The stop button for the urgent playout of a playlist also enables you to stop non-urgent playout of a playlist.

**Creating Text Material for Urgent Playout**

- 1** Select the Text tab in the Material Management window.
- 2** Select the destination network player group with the Destination drop-down list box, then click [New].  
The Edit Text dialog box appears.
- 3** Type the text.  
See the explanation of the Edit Text dialog box for details.
- 4** Click [Properties] then specify each item in the Properties dialog box.  
See the explanation of the Properties dialog box for details.
- 5** Click the play button in the Urgent section of the Edit Text dialog box.  
The system sends the entered text to the network players. Each network player starts playing the text as soon as it receives the text.
- 6** Click [Save] when you want to save the created text.

---

## Checking of the Network Players

### Checking the Network Player Status

The system enables you to check the status of each network player in the selected group. The remaining disk space of the hard disk in each network player is also shown.

- 1** Click [NSP-100 Status] in the main menu.  
The NSP-100 Status window appears.
- 2** Select the desired group from the Group drop-down list box.  
Click [Update] when the desired group is already selected.  
The status and the remaining disk space of each network player in that group is displayed on the list. When the network player is playing, information on the playlist or material also appears.

#### Note

Information in the NSP-100 Status window is not automatically refreshed. Check the date and time of the last update and click [Update] if necessary, before checking the network player status.




## Checking the Playout Log

The system enables you to obtain the playout log data from each network player to check it, provided the network player is set to record the log. There are two types of playout log: a playlist log that records playout status for each playlist, and an error log that only records errors.

### Hint

There is no limitation on the number of log files that can be obtained and stored by the BZNP-100 software. Keeping a large number of log files may cause low performance or problems of the PC. Check the log regularly and delete unnecessary log files by clicking [Delete Items] or [Delete All].

- 1 Click [Playout Log] on the main menu.  
The Playout Log window opens.
- 2 Select the Playlist tab to obtain/check the playlist log.  
Select the Error Log tab to obtain/check the error log.
- 3 Select the network player from which you want to obtain the log data using the NSP-100 drop-down list box.  
The date and time when the log data was obtained from the network player the last time appears in the Date/Time box.
- 4 Click [Get].  
The system obtains the log data from the selected network player, and adds it to the list.  
The results are indicated by the following marks:

Mark	Result
	Playout successful.
	A warning detected.
	An error detected.

### Displaying Playlist Log Details

On the Playlist tab, log data for each playlist is listed. Right-click the log data of the desired playlist then click [Log Details] on the menu to display the data of each event in the playlist.

When Microsoft Excel is installed on the PC, clicking [Send to Excel] instead of [Log Details] automatically starts Excel and displays the data for each event.

### Compressing Log Data

When a problem occurs on the network player or in the BZNP-100, you may have to send log data attached to an email to a person in charge of the problem. The system provides a error log data compressing feature to reduce the size of the data attachment to be sent.

- 1 If you have not yet obtained the log data, select the network player with the problem on the Error Log, then click [Get].
- 2 Click [Compress Logs], then follow the displayed messages.  
This procedure creates a compressed log file named "LOG.lzh," and places it on the Windows desktop.  
Send this file to the person in charge of the problem.

**Deleting Log Data on the PC**

To delete a specific data item, right-click it, then click [Delete Items] on the menu.

To delete the entire playlist log of the selected network player, click [Delete All] in the Playout Log window.

---

## Finishing the Operation

### **Closing the Windows of the BZNP-100**

Click the button marked with an X at the upper-right corner of the window.

### **Quitting the BZNP-100**

Click the button marked with an X at the upper-right corner of the main menu.  
All the BZNP-100 operation windows automatically close.

## System Setup

### Setting Up the Software

The system provides a setup function related to this software. Normally, this is used immediately after installation of the software.

- 1** Click [Setup] on the main menu.  
The Setup dialog box appears.
- 2** Select the Presentation option button in the Application Mode section to use this software for presentation, or the Scheduling option button to use it for automatic playout.  
The Scheduling Application is not provided with the BZNP-100LE.
- 3** Select the video format: NTSC or PAL.

#### Note

If you change the video format after starting to use the system, the temporary data (video and graphics material data without a corresponding NSP format file) will be deleted.

- 4** Change the folder(s) in which the converted video and graphics materials, text materials, playlists and/or device control commands are stored in the Material Management Folders section, if necessary.  
Enter the absolute path, or the relative path from the folder where the software is installed, or click [Browse] then select the desired folder from the folder tree.

#### Note

When a problem has occurred in the material database, click [Rebuild] corresponding to the material type.

Or, when the materials on a file server are shared by more than one BZNP-100, clicking [Rebuild] updates the material list display so that the results of other operators' operations are reflected.

Note that, rebuilding a large database takes a long time.

- 5** When materials are shared by more than one BZNP-100, assign an ID ("0"- "9" or "a"- "z") to each BZNP-100 using the BZNP-100 ID text box, to reduce the risk of overwriting materials. For example, specify the first BZNP-100 as "a," and the second as "b."  
A material code consists of a letter corresponding to the material type + a sequential seven-digit number, or a single letter that indicates the material type + a BZNP-100 ID + a sequential six-digit number. (Depending on the system configuration, the sixth digit from the right may also be a letter of the alphabet.)
- 6** To set/change the password used upon opening the NSP-100 Setup dialog box, enter the current and new passwords into the respective text boxes.  
Enter the same new password into the New Password and then the Retype New Password text boxes to avoid specifying a mis-typed password.
- 7** To enable the automatic playlist sending function of the Scheduling Application, select [Send (All Day)] or [Send (Limited Time)] from the Mode drop-down list box in the Automatic Sending of Scheduled Playlists (All Groups) section, then specify the retry interval (hour:minute).  
When you select [Send (Limited Time)], specify the enabled time period with the two Time spin boxes, too.  
This setting makes the system automatically send the revised playlists and the necessary materials to the network players, so that operation of playlist and material transfer will be unnecessary. If an error should occur because of a network problem, the system will

resend the same data with the specified interval.

The Presentation Application does not support the automatic playlist sending function.

- 8** To make the system retry sending playlists and materials that are manually sent to the network players until data transfer is completed, select [Yes] from the Retry drop-down list box in the Retry for Manual Sending section.

Select [Yes] in the normal operation.

- 9** Click [OK].

If you change the application mode and/or video format, wait until the software automatically restarts.

In other cases, you can continue operation.

### **Changing the Network Parameters**

Click [Network Setup] in the Setup dialog box, make the necessary modifications in the Network Setup dialog box, then click [OK].

#### **Note**

In normal operation, it is not necessary to change the parameters in the Network Setup dialog box.

Consult your network administrator when changing these settings, because inappropriate parameters may make the system unstable.



---

## Setting Up the NSP-100 Network Players

The system enables you to make the settings for the network players with the BZNP-100, and transfer the settings to a network player. This is useful when you are using many network players.

### Note

This operation restarts the network player(s). Do not carry out this for the network player(s) that is/are being used for playout.

- 1 Click [NSP-100 Setup] on the main menu.  
The NSP-100 Setup dialog box appears.

### Note

Password entry may be required upon clicking [NSP-100 Setup].  
Enter a valid password then click [OK]. This password is defined/modified in the Setup dialog box.

- 2 Select the network player or group of network players to transfer the settings to in the Destination section.
- 3 Specify or modify the items displayed above [Send] in the dialog box as desired.  
See the explanation of the NSP-100 Setup dialog box for details.
- 4 Click [Send] to transfer the settings to the selected network player or group.  
If an error occurs during transfer, an error message appears. When transferring the settings to the group, click [Transfer Status] on the main menu and find out the network player which did not receive the settings because of the error.
- 5 Repeat the procedure for the next network player or group, if necessary.

### Copying the Settings of a Network Player or a Group

Select the source network player or group with the Copy from section in the NSP-100 Setup dialog box, then click [Copy].

The settings of the network player or group appear in the dialog box. Modify them, if necessary, then transfer them to the desired network player or group.

### Note

This function copies the settings stored within the BZNP-100, it does not obtain them from the actual network player or group.

---

## Editing Control Files Used on Network Players

A network player uses the following three types of files to control external devices such as a PDP, or to run a command list.

- **PdpCfg.txt:** Configuration file used to control PDPs connected to the RS-232C/GPI connector, using the external device control events, or an urgent playout procedure of a control command.
- **GpiCfg.txt:** Configuration file used to control devices connected to the RS-232C/GPI connector using GPI pulses output from the external device control events, or to play a different playlist, according to the GPI pulse input to the network player.
- **CmdLst.txt:** Command list file that will run on network players. It is used, for example, to adjust the audio level, based on the time of day.

The BZNP-100 enables you to edit these files and send them to a single specified network player, or to the network players in a specified group.

### Note

An erroneous control file may result in network player problems. You can copy the original control files back from the "BZNP-100 install folder\Masterfl" folder if there is any trouble caused by a modified control file.

Refer to the protocol manual of the network player for details on how to edit a control file. Ask your supplier or Sony sales representative about the protocol manual.

- 1 Click [NSP-100 Setup] on the main menu.  
The NSP-100 Setup dialog box appears.

### Note

Password entry may be required upon clicking [NSP-100 Setup].

Enter a valid password then click [OK]. This password is defined/modified in the Setup dialog box.

- 2 Select the destination network player or the group of network players for the control file in the Destination section.
- 3 Select the desired control file in the Control File Editing section.
- 4 Click [Edit] to edit the selected control file.  
The application program associated with the file extension "txt" starts, and the contents of the control file appear in the window.  
If you do not want to edit the control file, proceed to step 7.
- 5 Edit the control file.
- 6 Save (overwrite) the control file, then close the text editing application program.  
Do not change the file name and location.
- 7 Click [Send Control File] to send the control file to the specified network player or group.  
The control file is sent to the network player(s) and stored there.
- 8 Restart the network player(s) to make the received control file effective.

### Hint

When sending a GpiCfg.txt or CmdLst.txt file, restarting of the network players may not be necessary to update the control file, depending on the contents of the file.

### **Using a Control File for Another Network Player or Network Player Group**

To apply a control file to another network player or group, copy the corresponding control file using Windows Explorer, before carrying out the procedure above.

The control files for a single network player are stored in "BZNP-100 install folder\NSP\network player name folders," and those for a network player group are stored in "BZNP-100 install folder\PLIST\group name folders."

For example, to apply a PDP control file for the "HQ" network player to the network player group named "Tokyo," copy "PdpCfg.txt" from "BZNP-100 install folder\NSP\HQ" to "BZNP-100 install folder\PLIST\Tokyo," then carry out steps 1 to 3 and 7 to 8 of the procedure above.

---

## Changing the Standby Screen and Playlist Loading Screen of the Network Players

Each network player has a "standby screen," that is, a piece of graphics material displayed when no event is played from the network player. It also has a "playlist loading screen" (a solid black screen by default) that is displayed while a playlist is being loaded immediately before playout of the playlist starts. The system allows you to change the standby and playlist loading screens to any piece of graphics material converted using the BZNP-100.

- 1 Click [Material Management] on the main menu, if the Material Management window is not open.
- 2 Select the Graphics tab.
- 3 Right-click the desired piece of graphics material (one which has been converted to the NSP format), then click [Change Standby Screen] or [Change Playlist Loading Screen]. A confirmation message appears in either case.
- 4 Click [Yes].

### Returning the Standby Screen to the Default Screen

You can change the standby screen back to the default screen using the piece of graphics material provided for this purpose, titled "Default Standby Screen." The material code of this item is "S000000N" (in the case of NTSC) or "S000000P" (in the case of PAL), and its type is "Menu."

#### Note

There is no way to return the playlist loading screen to the default solid black screen. However, you can create a similar black piece of graphics material, then designate it as the new playlist loading screen.

---

## Specifying the Special Playlists of the Network Players

Each network player may have the following two special playlists. The BZNP-100 allows you to simultaneously make a specification for all the network players in a certain group.

- Power-on start playlist  
Automatically starts playout when the network player is powered on.
- Play button start playlist  
Starts when the play button of the remote controller is pressed during standby.

### Hint

In the case of the Scheduling Application, scheduled playlists have the highest priority. Playout of a power-on start playlist or a play button start playlist will be terminated approximately 10 seconds before the start time of a scheduled playlist.

- 1 Click [Material Management] on the main menu, if the Material Management window is not open.
- 2 Select the Playlist tab, select the desired network player group from the Destination drop-down list box, then click the PC File Management option button.
- 3 Right-click the desired playlist, then click [Start on Power-on] or [Start by PLAY Button].
- 4 Send the playlist to the selected network player group.

### Canceling the Settings

To cancel the power-on start or play button start playlist setting, select the playlist/playlist module displayed in yellow-green (in the case of the power-on start playlist) or green (in the case of the play button start playlist) in step 3 in the procedure above, then click [Cancel Power-on/PLAY Button Start Setting] and send the playlist to the network player group.

### Note

You can change the special playlists or cancel the setting on each network player. To check the special playlists specified for a certain network player, click the NSP-100 Remote File Management option button and select the desired network player. You cannot make or cancel the special playlist setting for the respective network player from the BZNP-100, though.

---

## Setting Up Network Player Groups

The system supports network player groups so that you can send the playlists and materials to such a group, rather than to individual network players. Creating the groups depending on the display type used in the group, such as over-scan displays (TVs) and under-scan displays (PC displays and PDPs) is a good idea because the system is able to adjust the positions of the video and text for over-scan displays, which can only show an area smaller than that of under-scan displays. Specify a network player group as follows:

### Note

The BZNP-100LE supports only one network player. In this case, clicking [Group Setup] displays the NSP-100 Settings dialog box. Perform only step 3 below. The network player name entered is also assigned to the network player group.

- 1** Click [Group Setup] on the main menu.  
The Group Setup dialog box appears.
- 2** Register the network players used in the system.
  - 2-1** Click [New] for NSP-100.
  - 2-2** In the NSP-100 Settings dialog box, enter the name and IP address of the newly registered network player, then click [OK].  
Assign the IP address corresponding to that for the network player using its remote controller. Clicking [Check Connection] checks the connection to the specified IP address, and displays the result.
  - 2-3** Repeat steps 2-1 and 2-2 to register all network players used in the system.
- 3** Create the network player groups.
  - 3-1** Click [Edit Group].
  - 3-2** Click [New] in the Edit Group dialog box.
  - 3-3** Enter the group name, select the display type for the group, then click [OK].  
Select "Over Scan" for TV monitors, or "Under Scan" for PC monitors and PDPs. This selection is used to adjust the pre-defined video and text positions of the display, such as "Upper Left" or "Lower," in the Display Setup dialog box.
  - 3-4** Repeat steps 3-2 and 3-3 to create all the network player groups to be used in the system.
- 4** The order of the groups shown in the Edit Group dialog box is that of the selection of the groups shown by the software.  
Arrange the groups in the desired order using a drag & drop operation, then click [OK].
- 5** Assign each network player registered in step 2 to the groups.
  - 5-1** Select the desired group in the Group drop-down list box.  
The network players that currently belong to the selected group appear in the right-hand list, and those that do not belong to that group appear in the left-hand list.
  - 5-2** Move the network players by selecting one and clicking [Add >>] or [<< Delete], so that the network players that should belong to the selected group appear in the right-hand list, and those that should not belong to that group appear in the left-hand list.
  - 5-3** Repeat steps 5-1 and 5-2 for all groups.
- 6** Click [OK].

### Note

A single network player can belong to more than one group.

### **Network Player Priority in a Group**

When sending playlists and materials to the network player group, each network player in the group receives them one by one, in the order listed in the Group Setup dialog box.

The system enables you to change the order by arranging the network players registered in the Group Setup dialog box. Use a drag & drop operation to change the listed order of the network players, then click [OK].

### **Deleting a Group**

Display the Edit Group dialog box, select the group to be deleted, then click [Delete]. Click [Yes] for the confirmation message, then click [OK] in the Edit Group dialog box. The group is actually deleted when you click [OK] in the Group Setup dialog box.

### **Modifying the Group Name or Display Type**

Display the Edit Group dialog box, select the group to be modified, then click [Edit]. In the newly displayed Group Settings dialog box, modify the name or select the display type, then click [OK].

Clicking [OK] in the Edit Group and Group Setup dialog boxes makes the modification effective.

### **Modifying a Network Player Registration**

- 1 When the network player to be modified belongs to the selected group, first delete it from the group to move it to the left-hand list.
- 2 Select the network player to be modified in the left-hand list, then click [Edit] for NSP-100. Or, double-click the network player to be modified. The NSP-100 Settings dialog box appears.
- 3 Modify the name and/or IP address of the selected network player, then click [OK].
- 4 Assign the modified network player to the desired group, then click [OK] in the Group Setup dialog box.

#### **Note**

Modify the IP address setting of the corresponding network player, too, when you modify the IP address of a network player.

### **Deleting a Network Player Registration**

- 1 When the network player to be deleted belongs to the selected group, first delete it from the group to move it to the left-hand list.
- 2 Select the network player to be deleted in the left-hand list.
- 3 Click [Delete] for NSP-100. Clicking [Yes] for the confirmation message deletes the network player registration.
- 4 Click [OK] in the Group Setup dialog box.

---

## NSP-100 Maintenance Commands

The NSP-100 Setup dialog box provides the following two commands for maintenance of the network players:

- **Restart NSP-100**  
Used to restart a malfunctioning NSP-100. (Restarting may not work, though, in case of a network problem.)
- **Update Firmware**  
Used to update the firmware of an NSP-100 or all NSP-100s in a group.

### Note

- Either button restarts the network player(s). Do not use them for network player(s) that is/are being used for playout.
- Password entry may be required upon clicking [NSP-100 Setup]. Enter a valid password then click [OK]. This password is defined/modified in the Setup dialog box.

### Restarting an NSP-100

- 1 Click [NSP-100 Setup] on the main menu.  
The NSP-100 Setup dialog box appears.
- 2 Click the Individual option button in the Destination section, and select the name of the NSP-100 to be restarted in the Name drop-down list box.  
You cannot select a network player group to restart all the network players in it.
- 3 Click [Restart NSP-100].  
A confirmation message appears.
- 4 Click [Yes].

### Updating the Firmware of NSP-100(s)

- 1 Click [NSP-100 Status] on the main menu.
- 2 Select the group to which the network player(s) to be updated belong in the Group drop-down list box.  
Or, click [Update] if the desired group is already selected.  
Then, check that the network player(s) to be updated is/are not currently being used for playout.
- 3 Click [NSP-100 Setup] on the main menu.  
The NSP-100 Setup dialog box appears.
- 4 In the Destination section, select the network player or group whose firmware is to be updated.
- 5 Click [Update Firmware].  
A confirmation message appears.
- 6 Click [Yes].  
The firmware file is sent to the network player(s). The network player automatically restarts after the firmware is updated.  
If an error occurs during transfer, an error message appears. When you send the firmware file to a network player group, click [Transfer Status] on the main menu and find out the network player which did not receive the firmware file because of the error.



**Hint**

If the firmware file to be sent is either the same or an older version, the file is not sent. The transfer results will be "OK," though.

### Setup Dialog Box

The Setup dialog box enables you to modify the settings related to this program. Specify the desired setting for each item, then click [OK].

#### Application Mode Section

Selects the application mode of this software: Presentation Application mode or Scheduling Application mode. The software in the Presentation Application mode works as a system that plays events according to control by the remote controller whereas that in the Scheduling Application mode works as a system that automatically plays events according to a specified schedule.

Restarting of the application program is required to change this setting.

#### Video Format Section

Selects the video standard (NTSC or PAL) used by the system.

Restarting of the application program is required to change this setting.

#### Material Management Folders Section

Specifies the folders in which the materials and playlists are stored.

Enter the absolute path or relative path from the one where the software was installed, or click [Browse] then select the folder in the displayed folder tree.

#### Note

If a problem occurs in the material database, click [Rebuild] corresponding to the material type with the problem to rebuild the database.

Or, when the materials on a file server are shared by more than one BZNP-100, clicking [Rebuild] updates the material list display so that the results of other operators' operations are reflected.

Note that, however, rebuilding a large database takes a long time.

#### Material Code Starting Numbers Section

Specifies the numbers of the material codes that will be assigned to subsequent pieces of material depending on the material type.

When the materials are shared by more than one BZNP-100, assigning an ID (“0”-“9” or “a”-“z”) to each BZNP-100 in the BZNP-100 ID text box will reduce the risk of overwriting materials.

For example, specify “a” to the first BZNP-100 and “b” to the second. The first BZNP-100 will generate the sequential material codes for playlists from “Pa000001,” and the second one will generate from “Pb000001,” so that the material codes will show the BZNP-100 on which the material was created.

#### Hint

A material code consists of a single letter that indicates the material type + seven-digit sequential number, or a single letter that indicates the material type + BZNP-100 ID + six-digit sequential number. (Depending on the system configuration, the sixth digit from the right may also be a letter of an alphabet.)

### **NSP-100 Setup Password**

Sets a password used to open the NSP-100 Setup dialog box and modify its settings as there are some important settings for the network players in the dialog box. To set/change the password used upon opening the NSP-100 Setup dialog box, enter the current and new passwords into the respective text boxes. The password is case-sensitive, and consists of up to eight alphanumeric characters.

Enter the same new password into the New Password and then the Retype New Password text boxes to avoid specifying a mis-typed password.

To clear the password setting, enter the current password into the Old Password text box, clear the two text boxes for the new password, then click [OK].

### **Automatic Sending of Scheduled Playlists (All Groups) Section (Scheduling Application Only)**

Specifies whether the system automatically sends the playlists and the necessary materials to the network players.

If you do not want to allow automatic sending, select [No Send] in the Mode drop-down list box. [Send (All Day)] allows the system to send newly created playlists at any time, whereas [Send (Limited Time)] only allows the system to send them during a specified period in a day.

To allow automatic playlist sending, specify the retry interval (hours:minutes) in the Interval text boxes, too, such as "0:30" in the case of retry at a 30 minute interval.

When you select [Send (Limited Time)], specify the time when the system is to send the playlist, as well.

The Automatic scheduled playlist sending function searches for playlists that contain events scheduled later than the current time, then compares such playlists on the PC and the corresponding ones on the network players. Only playlists that have been updated will be automatically sent to the network player(s).

We recommend you select [Send (Limited Time)], and specify a time such that there is no conflict with the daily HDD sleep time specified in the NSP-100 Setup dialog box.

### **Retry for Manual Sending Section**

Specifies whether the system automatically re-sends manually sent materials and/or playlists if an error occurs.

We recommend you select [Yes] in the course of normal operation.

#### **Hint**

Regardless of this setting, the system always re-sends the scheduled playlists and materials sent by the automatic playlist sending function (described above) at the specified interval, if an error occurs.

### **Network Setup Button**

Opens the Network Setup dialog box to change the detailed parameters related to the network.

#### **Note**

In normal operation, it is not necessary to change the parameters in the Network Setup dialog box.

Consult your network administrator when changing them, because inappropriate parameters may make the system unstable.

---

## Network Setup Dialog Box

The Network Setup dialog box enables you to change detailed parameters related to network communication.

The system uses FTP for material and playlist data transfer, and Telnet to communicate with the network players about errors and their status information.

### Note

In normal operation, it is not necessary to change the parameters in the Network Setup dialog box.

Consult your network administrator when changing them, because inappropriate parameters may make the system unstable.

### FTP Settings

The Number of Sessions text box specifies the number of network players that can be simultaneously connected. Specifying a larger number increases the time required for data transmission to each network player.

The Mode drop-down list box selects PORT or PASV. Normally, select the PORT mode. Depending on the security management of the network, such as using a firewall to prevent unauthorized accesses, however, selecting the PASV mode may enable file transfer that is not possible in the PORT mode. Note that using the PASV mode requires the corresponding routers.

### FTP Time-out Settings

Specifies the duration until a time-out error occurs when attempting an FTP connection, and until one occurs during FTP communication. If time-out errors occur when starting connection or during data transfer, make the corresponding setting larger.

### FTP Data Size Settings

The Sending Data Size text box specifies the size of a data packet sent at a time. A larger setting may increase data transfer speed.

The Sending and Receiving Buffer Size text boxes specify the buffer size for sending/receiving data. They must be larger than the setting of Sending Data Size. Normally, specify a value quadruple of the Sending Data Size.

### Telnet Time-out Settings

Specifies the duration until a time-out error occurs when attempting a Telnet connection, and until one occurs during Telnet communication. If time-out errors occur when starting connection or during data transfer, make the corresponding setting larger.

### Default Settings Button

Returns all parameters in this dialog box to the default values.

---

## NSP-100 Setup Dialog Box

The NSP-100 Setup dialog box enables you to make settings for network players and transfer those settings to a network player.

It also provides buttons for restarting network players and upgrading firmware. The control files used on the network players can also be edited and transferred here.

### Note

- To do so, first, you must specify the settings related to the network, such as the IP address, using the remote controller of the network player.
- Sending the settings to the network player(s) or updating the network player(s) restarts it/them. Do not restart network player(s) that is/are being used for playout. You can check a network player's status using [NSP-100 Status] on the main menu.
- The dialog box shows the NSP-100 settings managed by the BZNP-100. Once you decide to use this dialog box to manage the NSP-100 settings, never use the remote controller of the NSP-100 or the http utility to modify them, because modifications made using the remote controller or the http utility are not reflected in this dialog box.

### Destination Section

Selects the destination where the settings or the control file should be sent.

To send the settings or the control file to one network player, click [Individual], then select the network player from the drop-down list box.

To send the settings or the control file to all network players in a certain group, click [Group], then select the groups from the drop-down list box.

### Copy from Section

Selecting a network player or a network player group and clicking the Copy button displays the settings of the selected network player/group in the dialog box.

This is helpful when using many network players, as you can modify a part of the settings copied from one network player/group and send them to others.

### Note

This function copies settings managed by the BZNP-100, and does not fetch the settings from the actual network player/group.

Also, you cannot specify the copy source of the configuration file used for external device control, nor the command list file for the network player here.

### Setup Section

Makes settings related to network player operation. Refer to the operating manual of the network player for details on this section.

### Note

Leave all the MENU Screen Setup boxes blank if you do not want to specify any settings for them.

### System Administrator Setup Section

Makes settings related to the administration of the network player. Refer to the operating manual of the network player for details on this section.

**Note**

Only numbers (four digits) can be used for the password in this section.  
 Leave both of the password text boxes blank if you don't intend to use any password.

**Time Synchronization (NTP) Section**

Select "No" from the Synchronize drop-down list box if you do not intend to use any NTP server for time adjustment.

Make the following settings to adjust the time using the NTP server.

Item	Setting
Synchronize	"Yes"
Server IP Address	IP address of the NTP server.
Synchronize Mode and Time/Interval	Select "Time" and set the time using the Time/Interval spin boxes to adjust the time at the specified time everyday. Select "Interval" and set the interval using the Time/Interval spin boxes to adjust the time at the specified intervals.
Time Zone	Time zone where the network player and the NTP server belong.

**Network Security (FTP, Telnet) Section**

Specifies the user name and password that are used by this software to access the network player. (You should enter the same password twice to avoid specifying a mistyped password.)

When an individual network player is selected as the destination, clicking [Check Connection] checks connection to the network player with the user name and password stored.

**Note**

- Leave all the Network Security boxes blank when you want to apply default settings for them.
- When you are replacing the PC where the BZNP-100 operates due to maintenance, etc., enter the user name and password that are being used in the respective text boxes, then click [Save in BZNP only]. In such a case, other items in the dialog box do not need to be specified. Do not send the settings to the network player.

**Daily HDD Sleep Setup**

Modifies the daily sleep function settings of the hard disk drives in the network players. The default setting of the network player is "Sleep Only" and the sleep start time is "03:00am."

The Setting drop-down list box allows you to select either "Sleep Only" or "Restart after Sleep."

Selecting "Sleep Only" makes the network player show the standby screen at the specified time and let the HDD in the network player to sleep for about one minute. Then, in the case of the Presentation Application, the network player starts the power-on start playlist. In the case of the Scheduling Application, the network player resumes the scheduled playlist, or starts from the top event of the playlist if the playlist was being played repeatedly.

Selecting "Restart after Sleep" makes the network player restart after an HDD sleep. The Sleep Start Time spin box specifies the time (24-hour clock system) to start the HDD sleep. Specify a time you don't expect to use the network player for playout and file transfer.

**Note**

The NSP-100 Network Player cannot be used 24 hours a day. It cannot play materials and playlists nor receive files for about one minute of required sleep, and for another minute if restarted.

Select "Sleep Only" when you do not want to stop display on the monitors. The standby screen is shown while the HDD is sleeping.

If you repeat a playlist using the Scheduling Application, we recommend you specify the daily repeat end time in the playlist's Properties dialog box to decrease the continuous motor operation time of the HDD.

**Send Button**

Sends the current settings to the specified network player or group.

**NSP-100 Maintenance Commands Section**

includes two buttons: Restart NSP-100 and Update Firmware.

The Restart NSP-100 button restarts the NSP-100 network player selected in the Destination section.

The Update Firmware button updates firmware of the network player (or the network players in the group) selected in the Destination section. The file is sent to the network player or group, and the firmware of the network player(s) is updated.

**Control File Editing Section**

Enables you to edit the following three types of control files, and send them to the network player or group specified in the Destination section.

The master files of these control files are stored in the NSP folder in the BZNP-100 install folder, and copied to "BZNP-100 install folder\NSP\network player name folder" (in the case of a single network player), or "BZNP-100 install folder\PLIST\group name folder" (in the case of a network player group) when first editing/sending control files.

- PdpCfg.txt: Configuration file used to control PDPs connected to the RS-232C/GPI connector from external device control events, or in an urgent playout procedure of a control file.
- GpiCfg.txt: Configuration file used to control devices connected to the RS-232C/GPI connector using GPI pulses output from external device control events, or in an urgent playout procedure, or to play a different playlist, based on the GPI pulse input to the network player.
- CmdLst.txt: Command list file that will run on the network players. It is used, for example, to adjust the audio level, depending on the time of day.

The File drop-down list box selects the control file to be edited or sent.

The Edit button opens the selected file for the network player or group specified in the Destination section with the application program associated with the .txt files.

Overwrite the file when editing is completed.

The Send Control File button sends the selected control file to the network player or group specified in the Destination section.

**Note**

- The network player needs to be restarted to make the received control file effective. When sending a GpiCfg.txt or CmdLst.txt file, however, restarting of the network players may not be necessary, depending on the contents of the file.

- An erroneous control file for the network player may result in network player problems. You can copy the original control files back from the "BZNP-100 install folder\Masterfl" folder if there is any trouble caused by the modified control file. Refer to the protocol manual of the network player for details on how to edit a control file. Ask your supplier or Sony sales representative about the protocol manual.



---

## Group Setup Dialog Box

The BZNP-100 software (except for the BZNP-100LE) manages more than one network player. The Group Setup dialog box is used to make groups of network players so that you can simultaneously send materials and playlists to many network players.

### NSP-100 Section (Left)

New Button

Opens the NSP-100 Settings dialog box to add a new network player to the list.

Edit Button

Opens the NSP-100 Settings dialog box to modify the name and/or IP address for the network player selected on the list.

Delete Button

Deletes the network player(s) selected on the list.

NSP-100 List

Displays registered network players that do not belong to the group selected in the Group section on the right.

### Group Section (Right)

Edit Group Button

Opens the Edit Group dialog box to create a new group or modify the priority of the groups.

Group Drop-down List Box and List

The network players that belong to the group selected with the drop-down list box are displayed on the list.

When sending data to a group, the network players will receive it in the listed order. You can arrange the displayed network players using a drag & drop operation to change the order (priority).

### Add>> and <<Delete Buttons

The Add >> button moves the network players selected on the NSP-100 (left) list to the right and adds them to the selected group.

The << Delete button, on the other hand, removes the network players selected on the right-hand list from the group. The removed network players move to the left-hand list.

---

## Edit Group Dialog Box

The BZNP-100 software (except for the BZNP-100LE) manages more than one network player. The Edit Group dialog box is used to manage “groups” of network players so that you can simultaneously send materials and playlists to many network players.

### **New Button**

Opens the Group Settings dialog box to create a new group.

### **Edit Button**

Opens the Group Settings dialog box to modify the selected group.

### **Delete Button**

Deletes the selected group.

### **Group List**

Lists all groups that are currently registered.

You can arrange them using a drag & drop operation to change the display order of the groups.

---

## NSP-100 Settings Dialog Box

The NSP-100 Settings dialog box is used to register an NSP-100 Network Player. A network player plays materials according to the playlist sent from the BZNP-100. You can use the name specified in this dialog box to identify each network player during the operation.

### Note

The BZNP-100LE manages only one network player. The name specified for the network player here is automatically assigned as the network player group name.

### NSP-100 Name Text Box

Enter a name for the network player.  
It must be unique in the system.

### IP Address Text Box

Enter an IP address for the network player.  
It must be unique in the system.

### Check Connection Button

Checks communication to the device with the specified IP address, and shows the result.

Note that an incorrect password error will occur if a password has been set to the network player but you have not yet finished the settings in the Setup window where the user name and password are supposed to be registered.

---

## Group Settings Dialog Box

The Group Settings dialog box is used to register a new group of network players or modify the data of the selected one.

### **Group Name Text Box**

Enter a name for the new group.

#### **Note**

It must be unique in the system.

### **Display Size Drop-down List Box**

Select the display size according to the monitors connected to the network players in the group.

Select "Over Scan" for TV monitors, or "Under Scan" for PC monitors and PDPs. This selection is used to adjust the pre-defined video and text positions of the display, such as "Upper Left" or "Lower" in the Display Setup dialog box. Because "Over Scan" monitors are not able to display the entire screen, the system adjusts the display positions when you select "Over Scan" here.

---

## Transfer Status Window

The Transfer Status window enables you to check the transfer status of the playlists and materials sent to the network players. It displays information on the group to which playlists/materials were sent last. The information will be cleared by other data transfer operations, such as obtaining a playout log, remote control of an NSP-100 network player from the Material Management window, or NSP-100 setup.

### Note

This window does not display the results of automatic sending for scheduled playlists.

### Group Indication

Displays the name of the selected network player group. Information on this group is displayed.

### Status List

Displays the sending order and status of the network players in the selected group. The background color of each line shows the transfer status, as explained at the bottom of the window. When the system is set, in the Setup window, to automatically re-send the playlists and materials if an error occurs in manual sending, the Retry column shows the number of re-sending attempts. No indication in this column means that there were no error occurred in the last transfer to the network player.

### Hint

Resend playlists/material to the group if an error should occur.

The system sends playlists/materials only to network players which experienced problems in the previous transfer.

### Results Button

Opens the Transfer Results window in which the transfer results of all network players are shown, not only those of the network players in a single group.

### Abort Button

Cancels sending of playlist/material for the group.

---





## Transfer Results Window

The Transfer Results window displays transfer results of all network players. Information on the last transfer of playlist/material to the respective network players is shown.

### Note

This window does not display the results of automatic sending for scheduled playlists.

The list displays the group and transfer result of each network player in the sending order. The following marks are used to indicate transfer results.

Mark	Result
(None)	No transfer done.
	Transfer successful.
	Connection error occurred.
	Transfer error occurred.
	There is unsent material.

---

## Convert Material Window

The Convert Material window converts video and graphics files into the NSP format. The network players only play NSP format files. There are two tabs, one each for video and graphics files respectively, but the conversion operation is the same.

### **Browse Drop-down List Box and Button**

Selects the folder in which the video/graphics files to be converted are stored. The Browse button opens the Browse for Folder dialog box to select the folder. You can also select the folder from the drop-down list box. The video or graphics files stored in the specified folder appear on the lower list.

#### **Note**

Reading video files directly from a CD-R or DVD-R upon conversion may result in an error because of their slow reading speed. In such a case, copy the video files to the hard disk first, then specify the folder to which they have been copied.

### **Video or Graphics List (To be converted: Upper list)**

Displays the video or graphics files stored in the folder specified with the Browse drop-down list box. These are original (to be converted) files.

You can sort (ascending order) the files by clicking the title of the desired column. Double-click the file, or right-click the file then click [Preview on PC] on the menu to view a file.

Conversion of the file is started by selecting the file and clicking the Start button, or by a drag-and drop operation moving it to the lower material list.

#### **Hint**

Video and graphics files that satisfy the following conditions will be converted to material having the same material codes as the original files. A piece of material that already has that material code will be overwritten.

- The file name (extension excluded) consists of eight characters.
- The first character of the file name is M (for a video file) or S (for a graphics file).
- The third through the eighth characters (six digits) of the file name are numbers.

### **Parameter Button (Video tab only)**

Opens the Parameter Settings dialog box to modify the parameters for video conversion. The bar that appears next to the Parameter button shows whether the system is now converting the video files.

### **Video or Graphics Material List (Converted: Lower list)**

Displays all the registered video/graphics materials. The background color of each line shows the status of the corresponding piece of material, as explained at the bottom of the window.

### **Start and Stop Buttons**

Starts or stops conversion of the selected files.

#### **Note**

It may take a bit of time to stop (cancel) conversion of a file.

---

## Parameter Settings Dialog Box

The Parameter Settings dialog box allows you to specify the parameters used when converting the selected video file into NSP format.

### Protection Drop-down List Box

Select ON to convert the video file to the protected NSP format, or OFF for the non-protected format.

Protected NSP format video files can only be played on network players. They cannot be previewed on a PC.

### File Size Drop-down List Box

Specifies the size of video material files managed by the system.

The system sometimes divides a piece of video material into several files for file transfer efficiency. Select [Large] (default setting), normally. Select [Small], when your system has specially been set to start playout of video material on the network players before they receive the entire material data (simultaneous acquisition and replay), or on a system where the network players obtain materials and playlists from an FTP server.

### AVI Section

Contains the parameters that are used only when an AVI file is converted into NSP format.

#### Video Rate Spin Box

Specifies the bit rate (unit: Mbps) of conversion. Specifying a larger value results in a larger file and better video quality whereas a smaller value results in a smaller file but lower video quality.

#### Note

The system manages AVI files with a duration of from five seconds through 150 minutes. Conversion will automatically stop when the material duration exceeds 150 minutes.

#### Filter (Audio) Drop-down List Box

Selects whether audio noise (low-level audio signals) should be cut upon conversion. Normally, leave this set to OFF. Set it to ON if the converted video files contain unacceptable audio noise.



---

## Capture Window

The Capture window is used to capture video from a camcorder or VCR that is connected to the PC via i.LINK (IEEE1394), creating AVI files.

### Note

- Please contact your supplier or Sony sales representative for information on the video devices that you can use for capturing. Other video devices may be used, but depending on the device, some operations, such as shuttle control and cue-up operations, may not be available.
- Picture and sound do not synchronize during capture. Although some noise may be output from the speaker, it will not be contained in the captured AVI file.
- Depending on the operating environment of your PC, the captured AVI file may have skipped (dropped) frames. The In and Out points of the captured AVI file have a margin of error of two frames or less, respectively.

### Screen and the Time Code Indication

The screen shows the video of the connected video device subject to control by the video device controller.

The time code indication displays the current time code of the video device in blue. No indication appears when the connected video device is in the camera mode, though. While capturing, it counts up from 00:00:00:00 in red.

### Video Device Controller

Controls the connected video device.

It has play, stop, and pause buttons, as well as fast forward/rewind (shuttle), and single-frame step buttons for both directions.

Clicking the fast forward/rewind (shuttle) button changes the play speed.

### Note

Depending on the video device connected, there may be some buttons that do not operate correctly.

### Folder Button

Changes the folder where the created AVI files are stored.

The folder that was used last is selected. The "AVI" folder under the folder in which the BZNP-100 was installed is selected immediately after installation.

### In/Out Buttons, Time Code Text Boxes and Cue Up ( ) Buttons

Controlling the video device and clicking the In or Out button at the desired position defines the In or Out point. The time code of the defined In/Out point appears on the right.

If you are using a tape recorded in the DVCAM format, you can enter the time code of the In or Out point in the text box and click the corresponding cue up button to specify and cue up the desired point up. Then, click the In or Out button to define the In or Out point.

In the case of live recording, the time upon start recording appears as the In point, and the time at the end of recording appears as the Out point.

**Note**

- Capture is not possible if a time code that is not recorded on the tape is specified as the In or Out point.
- If the tape is not recorded in the DVCAM format, cue-up of the specified time code may be impossible. In such a case, use the video device controller to search for the desired scene, then click the In or Out button to define the In or Out point.

**Live REC, REC, and Stop Buttons**

The Live REC button immediately starts capture of the video, regardless of the specified In and Out points (live recording). The REC button starts capturing from the specified In point to the Out point.

The Stop button stops capturing in either case.

**Duration Indication**

Shows the AVI file duration calculated from the time codes of the In and Out points in the non-drop-frame mode. When using a tape recorded in the drop-frame mode, this indication may not be compatible with the time codes shown by the VCR.

**Note**

The length of the AVI files used in the BZNP-100 is from five seconds to 150 minutes. Capturing will automatically stop when the length of the AVI file exceeds 150 minutes.

---

## Edit Text Dialog Box

The Edit Text dialog box is used to create and edit text material.

### Properties Button

Opens the Properties dialog box to specify the properties of the text material, such as color or display type.

### Read Text File Button

Selects a text file and imports its text to use as a piece of text material.

### Font Size in this window Drop-down List Box

Selects the font size of text material used in this dialog box. Use the Properties dialog box to specify the actual size of the text displayed by the NSP-100 (Available only for a font installed on the PC).

#### Hint

The Edit Text dialog box can be enlarged. Move the mouse pointer around the frame of the dialog box, and drag the point where the pointer shape turns into an arrow until the dialog box becomes the desired size.

### Type, Column-Line and Total Indications

Indicates the display type of the text, such as blink or scroll, the position (column and line) of the current text cursor position, and the number of characters entered in the text, respectively.

To change the type, click [Properties].

### Contents Text Boxes

Used to enter text to be displayed.

Selecting a part of a piece of text and right-clicking it shows the menu used for text editing.

ISO 8859-1 (ASCII 8-bit code table Latin-1) characters can be used for the text material using the font installed in the NSP-100 and material/playlist titles.

The maximum number of characters, depending on the text type, is as follows. The number of characters for each line is designated so as to allow the text to be shown fully on any type of display.

Text Type	No. of Characters
Constant	39
Blink	39
Scroll in	39 x 5 lines
Scroll	5,040

When a font installed on the PC is used, the text material will be sent to the network players as graphics data. The maximum number of characters varies depending on the color depth, font size, and width of the characters. The following table shows rough estimates.

Font Size	No. of Characters per Line	No. of Characters of Scrolling Text	
		Color Depth: 2	Color Depth: 16
12 pt. (16-pixel)	90	10,080	2,520
24 pt. (32-pixel)	45	5,040	1,260
48 pt. (64-pixel)	22	2,464	616
72 pt. (96-pixel)	11	1,232	308

### Duration

Shows the estimated minimum duration that is necessary to display the text material (two seconds for constant or blinking text). This changes according to the number of characters or the specified scrolling speed.

### Urgent Section (Play and Stop Buttons)

The play button is used to send text entered to the group selected in the Material Management window, and to start playout as soon as possible. This is referred to as "urgent playout." The stop button stops urgent playout of the selected group.

#### Note

The urgent playout function interrupts playout currently being carried out on the network player. The entered text will be displayed on the piece of material that is being played, or the selected text will override the text that is being played, if any. Also, scheduled playout will not start during urgent playout. Check the network player status in the NSP-100 Status window before starting urgent playout, and click the stop button at the end.

### Save Button

Saves text entered as a piece of text material.

---

## Properties Dialog Box

The Properties dialog box is used to specify the properties of text material.

### Hint

A piece of "bitmap text" material that uses a bitmap instead of text does not have data corresponding to the Font Settings section, and text and background colors.

### Font Settings Section

Used to specify the font (font face, size, and color depth) for displaying text.

First you should click either the NSP-100 Built-in or PC Installed option button.

When selecting the NSP-100 built-in font, no other settings in this section are required.

When selecting a font installed on the PC, specify the desired font from the drop-down list box and the font size from the Size drop-down list box. Then, select "2 Colors" of the Color Depth option buttons when using only one text color, or "16 Colors" to use more than one text color.

### Note

Only one font face and size can be specified for each text material piece.

Also, when the NSP-100 built-in font is selected, it is not possible to use more than one text color nor to make the text bold, italic, or underlined.

### Type and Title Text Boxes

Used to enter the type and title of the text material. This information will be displayed to identify each piece of text material.

### Text Type Drop-down List Box

Selects how the text material should be displayed.

Selection	Description
Constant	Displays stable text.
Blink	Displays blinking text.
Scroll	Makes text flow across the monitor from right to left.
Scroll in	Makes text entered into each line of the Contents text boxes (that fit the width of the screen) flow to the left edge, then stop.

### Color (Text and Background) Buttons

Specify the text and background colors. The squares next to the buttons indicate the current colors. To change the setting, click [Text] or [Background], then select the desired color in the Color dialog box.

When "16 Colors" is selected for Color Depth in the Font Settings section, you can specify the different color to each character. Use the Edit Text dialog box to assign a color to each part of the text. You can use only one background color, however.

### Transparency Drop-down List Box

Specifies the background color transparency on a full-screen video.

In the case of a piece of bitmap text, the system considers the color corresponding to index 0 of the bitmap as the background, hence transparent, color.

### **Speed Drop-down List Box**

Selects the speed of blinking or text flow. This is effective only when the "Blink," "Scroll," or "Scroll in" text type is selected.

You can also enter a value in the text box on the right.

The unit is "fields/blinking" for blinking, "pixels/field" for scroll, and "fields" (displaying duration) for scroll in.

#### **Hint**

1 field is half of 1 frame duration. It is approximately 1/60 of a second in the case of NTSC, and 1/50 of a second in the case of PAL.

You can save the value by entering the desired name in the drop-down list box and clicking the Save button (up to 30 settings). The Delete button deletes the selected setting.

When you specify a value that is not pre-defined and do not save it, the system automatically attempts to save the value with the name "User defined." A confirmation message appears when you click [OK] in the Properties dialog box. Click [Yes] to specify that value.

### **Number Text Box and Loop Check Box**

Specifies the number of times an item of text displays. Checking the Loop check box repeats text display during the event.

### **Position Drop-down List Box**

Selects the text position. You can also enter a coordinate (unit: pixels, the top left corner of the screen is (0,0).) in the text boxes for the position where you want the upperleft corner of the "constant" or "blink" text to be, and a Y coordinate for the "scroll" or "scroll in" text. You can save the coordinates by entering a name in the Position drop-down list box and clicking the Save button (up to 30 settings). The Delete button deletes the selected setting.

When you specify a coordinate that is not pre-defined and do not save it, the system automatically attempts to save the coordinate with the name "User defined." A confirmation message appears when you click [OK] in the Properties dialog box. Click [Yes] to specify that coordinate.

#### **Note**

- The settings for the number and position will be used with urgent text playout only. Normally, specify the number and position of each text event on the playlist.
- If you selected the "over-scan" display type upon group setting, the system adjusts the pre-defined positions, such as "Upper" and "Lower," so that the text can be correctly displayed on over-scan displays.  
Note that if you use both over-scan and under-scan displays in a single network player group, text may not be displayed at the expected position on some of the displays.
- The user-defined position settings saved here (up to 30 settings) are shared with the Text Position drop-down list box in the Display Setup dialog box displayed for editing playlists. You are not allowed to specify more than one user setting with the same coordinate. For a "scroll" or "scroll in" text, the X coordinate, even if you specify a user setting with an X coordinate setting that is not "0," will be ignored.

---

## Font Color Setting Dialog Box

The Font Color Setting dialog box is used to specify the color of the text selected in the Edit Text dialog box.

Clicking the desired color from the palette in the dialog box, then clicking [OK] changes the color of the selected text.

### **Hint**

The color shown at the upper-left corner is the default text color specified in the Properties dialog box. It cannot be changed here by clicking [Change Color].

### **Change Color Button**

Opens the Color dialog box to change the color of the selected position.

When your desired color is not shown on the 15-color palette, click an unnecessary color to replace it, then click this button.

---

## Edit Control (External Device/NSP-100) Dialog Box

The Edit Control (External Device/NSP-100) dialog box is used to make commands to control PDPs (Plasma Display Panel) or other devices connected to the RS-232C/GPI connectors of the network players, or to control the network player itself. The PDPs are controlled through the RS-232C interface and other external devices are controlled by GPI (General Purpose Interface) pulses.

The control commands for the external devices created in this dialog box can be added to playlists to control devices in synchronization with playout of materials.

The control commands for network players can be used with the urgent playout procedure to control the network players in a specified group.

### Type and Title Text Boxes

Used to enter the type and title of the device control command. This information will be displayed to identify each device control command.

### PDP Control Section

Used to control PDPs connected to network players.

Clicking the PDP Control option button enables you to select a control item from the Control drop-down list box.

#### Hint

The system enables you to modify the item labels displayed in the Control drop-down list box to tailor the indication to the various types of PDP control. "Power ON" and "Power OFF" cannot be changed, though.

Selecting an item in the drop-down list box highlights its label. Type the desired text, then click [Set].

### GPI Control Section

Used to control devices connected to the network players with GPI pulses.

Clicking the GPI option button enables you to check the box(es) for GPI Out-1 ON through GPI Out-4 ON, to specify the GPI pulses to be output.

### NSP-100 Control Section

Used to control the network players, such as, for example, adjusting audio volume.

Clicking the NSP-100 Control option button enables you to enter a command for the network player in the Control text box.

#### Note

- Control commands for network players cannot be inserted into a playlist.
- An erroneous control command may result in network player problems. Refer to the protocol manual of the network player for details on how to enter a control command. Ask your supplier or Sony sales representative about the protocol manual.



---

## View Playlist Window

The View Playlist window is used to see the playlist selected on the Playlist tab of the Material Management window.

This window does not enable you to edit the displayed playlist.

### Hint

If an event title is longer than the list width, hence it is not fully displayed, move the mouse pointer over it. The entire title text pops up.

### Code and Title Indications

Shows the code and title of the displayed playlist.

### Playlist

Displays a playlist, that is, a list of materials in the order of payout. Each piece of material to be played out is displayed as a separate event, depending on the material type. There is a "Start Time" column at the leftmost edge of the list in which the start time for each event appears. Events assigned the same number (No.) will start playing simultaneously. The gray strip indicates a break, that is a period in which no material is played out.

A green background color indicates that the material data has been registered but has not yet been converted. When a control command for the external device is assigned for an event, its title is displayed in the rightmost Control column.

Like in the Edit Playlist window, when a "playlist module," that is, a playlist piece to be inserted into another playlist, is inserted, it appears as a light-gray comment line with a closed arrow mark (↕). Double-clicking this mark expands the module, and its events appear enclosed by two light-gray comment lines whose Start Time columns have arrow marks (↕ and ↕).

The expanded playlist module can be collapsed by double-clicking the arrow mark on its upper comment line.

### Note

In the case of NTSC video, the system regards one second as 30 frames of video signal although it is approximately 29.97 frames (non-drop frame mode). Hence the actual length is longer than the duration indicated for such a piece of video material. This error is approximately two frames for one minute and 108 frames (3.3 seconds) for one hour. The system adjusts this error to indicate the start times of the events on the playlist, but there still is a small amount of error (less than one second) between the indication and the actual start time.

---

## Properties Dialog Box

The Properties dialog box is used to specify the type, title, and playout schedule (for the Scheduling Application only) of the playlist.

### **Type and Title Text Boxes**

Enter the type and title of the playlist that is being edited in the Edit Playlist window. This information will be displayed to identify each playlist.

### **Repeat Check Box**

Check this to repeat playout of this playlist, so that the first event will start again after playout of the last event, until playout is stopped manually. Clear it to not repeat playout.

#### **Note**

It is not possible to repeat playout of playlists that contain a break event.

### **Start Date and End Date Drop-down List Boxes (Scheduling Application only)**

Used to specify the period during which the playlist can be used. Specify the desired dates for the Start Date and End Date. Clicking the drop-down list button displays a calendar from which you can select a date.

#### **Hint**

You can customize the date format using the Windows Regional and Language Options. Open the Regional and Language Options window from the Windows Control Panel, and specify the desired "Short date" format. Note that date indication may not fit in the drop-down list box, depending on the selected format.

Refer to the online help of Windows for details on how to customize the date format.

### **Start Time Spin Box and Save as Default Button (Scheduling Application only)**

Used to specify the start time of the top event of the playlist.

Clicking the Save as Default button saves the specified time, and this will be the default for the playlists created for the same network player group from then on.

### **Repeat End Time Spin Box and Save as Default Button (Scheduling Application only)**

Used to specify the daily end time of a repeated playlist. These items are enabled only when the Repeat check box has a check mark.

Clicking the Save as Default button saves the specified time, and this will be the default for the playlists created for the same network player group from then on.

#### **Note**

The longest continuous playlist repeat duration is 23 hours and 58 minutes. Specify the Repeat End Time so that the network player will be idle at the HDD Sleep Start Time specified in the NSP-100 Setup dialog box.

Setting of an appropriate Repeat End Time gives you a better file transfer rate (when transfer is performed while the network player is not being used for playout), and fewer malfunctions of the network player HDD.

**Playlist Module Check Box**

Check this to make the current playlist a "playlist module," that is, a piece of playlist to be inserted into another playlist as one of its parts. You cannot specify the start and end dates for a playlist module, nor check the Repeat check box.

**Note**

In the case of the Scheduling Application, be sure that any playlist module has a check mark here, so that it has no start and end date data.

Otherwise, the system will send two playlists for playout at the same time on the same day to the network players, and this will cause a problem upon playout.

---

## Display Setup Dialog Box

The Display Setup dialog box opens in the following two cases while a playlist is being edited.

- When [Default Display Setup] (a button in the Edit Playlist window) is clicked. This enables you to specify the default display size and position of video events, and the default position of text events.
- When a video or text event is right-clicked, then [Display Setup] is clicked on the menu. This enables you to specify the size (video only) and position of that video or text.

### Note

The unit used in this dialog box is pixels, and the origin is the upperleft corner of the screen. You are not allowed to have more than one user setting whose value is the same.

If you selected the "over-scan" display type upon group setting, the system adjusts the pre-defined positions, such as "Upperleft" and "Lower," so that the video and text can be correctly displayed on over-scan displays. The system also indicates the area that is visible with over-scan displays on the screen in this dialog box.

Note that if you use both over-scan and under-scan displays in a single network player group, video and text may not displayed at the expected position on some of the displays.

### Video Position Drop-down List Box, Save and Delete Buttons

The Video Position drop-down list box selects the position of the video. The X, Y coordinates (upper-left corner of the video) of the selected or entered selection are shown in the text boxes, and you can see the position on the picture in the dialog box. You can also enter the desired values in the text boxes, or drag the video on the screen to specify the position.

The Save and Delete buttons are used to manage the user settings. When you specify a position that is not pre-defined, enter the name for the position in the Video Position drop-down list box, then click the Save button to register the coordinates (up to 30 settings). The Delete button deletes the selected user setting.

### Video Size Drop-down List Box, Save and Delete Buttons

The Video Size drop-down list box selects the size of the video. The width and height of the selected or entered selection are shown in the text boxes, and you can see the size on the picture in the dialog box.

You can also enter the desired values in the text boxes, or drag one of the eight handles (small black squares) around the video to specify the size.

Checking the Preserve Aspect Ratio check box fixes the aspect ratio of the video at 3:2 (NTSC) or 5:4 (PAL).

The Save and Delete buttons are used to manage the user settings. When you specify a set of width and height that is not pre-defined, enter the name for it in the Video Size drop-down list box, then click the Save button to register the values (up to 30 settings). The Delete button deletes the selected user setting.

### Text Position Drop-down List Box, Save and Delete Buttons

The Text Position drop-down list box selects the position of text. The X, Y coordinates (upperleft corner of the text) of the selected or entered selection are shown in the text

box, and you can see the position on the picture in the dialog box.

You can also enter the desired coordinate in the text box, or drag the text on the screen to specify the position.

The Save and Delete buttons are used to manage the user settings. When you specify a position that is not pre-defined, enter a name for that position in the Text Position drop-down list box, then click the Save button to register the coordinates (up to 30 settings). The Delete button deletes the selected user setting.

#### **Hint**

- When the text type is "scroll" or "scroll in," only the Y coordinate (upper edge of the text, where the top of the screen is "0") can be specified. Even if you select a user setting with an X coordinate setting that is not "0," the X coordinate will be ignored.
- The user settings registered here are shared with the Position drop-down list box in the Properties dialog box displayed for preparing text material.

#### **OK and Apply Buttons**

OK button saves the current settings for the event or as the default position.

#### **Hint**

If a value for the position and/or size has been entered, click [Apply] before clicking [OK]. This changes the screen picture in the dialog box according to your settings, so that you can check the result.

---

## Playout Log Window

The Playout Log window is used to obtain the playout logs from the network players to check them. The two tabs correspond to the two types of log data.

### Hint

When a problem occurred in the system and sending error log to the person in charge of the problem, click [Compress Logs] to reduce the size of log data. See the explanation "Compressing Log Data" in "Checking the Playout Log" for details.

### NSP-100 Drop-down List Box

Selects the network player for which the log data is being checked. The log data of the selected network player is displayed.

### Date/Time Indication and Get Button

Displays the last date and time when log data was obtained from the selected network player. Clicking the Get button fetches log data from the selected network player, and adds it to the list.

### Delete All Button (Playlist Tab Only)

Deletes all the playlist log data of the selected network player from the PC.

### Compress Logs Button

Compresses the obtained error log data.

### Log

Displays the log data.

You can sort (ascending order) the log data by clicking the title of the desired column.

Tab	Contents
Playlist	Title, playout start date and time, playout end date and time, the number of repeated times, and playout results (OK, Warning, or Error) of the playlists that were played with the selected network player.
Error Log	Date and time, level (error or warning), number and details of each error that occurred for the selected network player.

### Hint

When selecting the Playlist tab, right-clicking the log data displays a menu which you can use to delete log data. Clicking [Log Details] displays detailed log information for the selected playlist. When Excel is installed on the PC, there is the [Send to Excel] command on the menu. This command starts Excel and displays log information with it.

---

## Detail Screen Window

The Detail Screen window displays the status of each event in the playlist selected on the Playlist tab of the Playout Log window.

The type, title, start time specified in the playlist, the actual start and end times, the duration, result, and material code are displayed. Clicking [Result Code] shows a list of the result codes.

---

## Delete Date Settings Dialog Box

The system enables you to set the date on which the video, graphics or text material, or playlists will be automatically deleted from the network players to avoid causing them to be too full.

The Delete Date Settings dialog box is used to specify the date on which to do this. Click the date on the calendar, then click [OK].

### **Displaying Another Month on the Calendar**

Click the previous month or next month (right or left arrow) button next to the year and month indication.



---

## Change Start Time Dialog Box

The Change Start Time dialog box is used to change the start time of the event selected in the Edit Playlist window.

Modify the hour:minute:second of the start time, then click [OK].

### **Hint**

Each hour, minute, or second field accommodates only two digits. You may have to delete a number first to enter another: to change "00" to "05" for example, delete the second "0" to enter "5."

---

## **Password for NSP-100 Setup Dialog Box**

The Password for an NSP-100 Setup dialog box appears when the NSP-100 Setup dialog box is protected by a password.  
Enter the designated password, then click [OK].  
Note that the password is case-sensitive.

---

## **NSP-100 Status Window**

The NSP-100 Status window enables you to check the status of each network player in the system. You can also see the amount of remaining hard disk drive space on each network player in this window.

### **Group Drop-down List Box**

Selects a group of network players to see their information.

### **Update Button and Date/Time Indication**

Clicking the Update button updates information on each network player on the list. The date and time of the previous updating appears on the right.

### **List**

Shows the status of each network player that is contained in the group selected in the Group drop-down list box.

When a network player is playing, information on the type of playout (ongoing playlist, video, graphics and/or text, and if it is urgent playout), the current event number (in the case of a playlist), code, and title of the material or playlist that is being played are shown.

Also the amount of remaining hard disk drive space in the network player is also displayed.

---

## Preview Window

The Preview window enables you to check the contents of the video or graphics material.

### Note

- The system sometimes divides a piece of video material into several files upon conversion for file transfer efficiency. In such a case, you can only preview the top (first file) of the video material.
- Previewing the video material needs a playback function for MPEG2 files that is not included in the BZNP-100 software package. Purchase a utility software for MPEG2 playback and install it to preview MPEG2 files. We are unable to provide one for free because of issues related to the license agreement. AVI files, however, can be played back using DirectShow. Note that it is not possible to play VSR-2000/2000A files (pre-conversion) on a PC. Also, it is not possible to play video material protected when it was converted to the NSP-format.

### Slider (Video Material Only)

Used to check the desired position of the video material, and to start playback from that position.

The length of the bar corresponds to the length of the entire piece of video material (or its first file).

### Play, Stop and Pause Buttons (Video Material Only)

Controls playback of video.

---

## Import Materials Dialog Box

The Import Materials dialog box is used to import playlists and required materials for distribution that were created with the Sony BZNP-A1 authoring software. It is also used when you want to rebuild the entire material database, such as in the case where more than one BZNP-100 shares materials.

### **Update Materials Option Button**

Checks the data in the material management folders and updates the Material Management window.

Select this option button when the BZNP-A1 wrote the materials and playlist module directly into the BZNP-100 material management folder.

Also, select this to rebuild the database of all materials simultaneously.

### **Import Package from BZNP-A1 Option Button, Drop-down List Box and Browse Button**

Imports a distribution data package that contains materials and playlist modules created with the BZNP-A1.

Select this option button when you receive a distribution data package stored on a medium, such as a CD-R or DVD-R, from the BZNP-A1, then specify the folder for the package data using the drop-down list box or the Browse button.

### **Delete All Files After Copy Check Box**

Deletes the source files of the distribution data package after copy.

This check box is available only when the Import Package from BZNP-A1 option button is selected.

It is used only when the BZNP-A1 and BZNP-100 exchange packaged distribution data via a network drive, not via the media such as a CD-R or DVD-R.

### **Start Button**

Starts updating of the material database or importing distribution data package created with the BZNP-A1.

### **Abort Button**

Cancels updating of the material database or importing of a distribution data package.

Sony Corporation

<http://www.sony.net/>

## Free Manuals Download Website

<http://myh66.com>

<http://usermanuals.us>

<http://www.somanuals.com>

<http://www.4manuals.cc>

<http://www.manual-lib.com>

<http://www.404manual.com>

<http://www.luxmanual.com>

<http://aubethermostatmanual.com>

Golf course search by state

<http://golfingnear.com>

Email search by domain

<http://emailbydomain.com>

Auto manuals search

<http://auto.somanuals.com>

TV manuals search

<http://tv.somanuals.com>