



# Start Here

1

Activate and install  
your Sony® SVR-3000

2

Complete Guided Setup

3

Use the TiVo® service—  
it's easy!

# SONY®

# STEP 1

## ▶ Activate and install

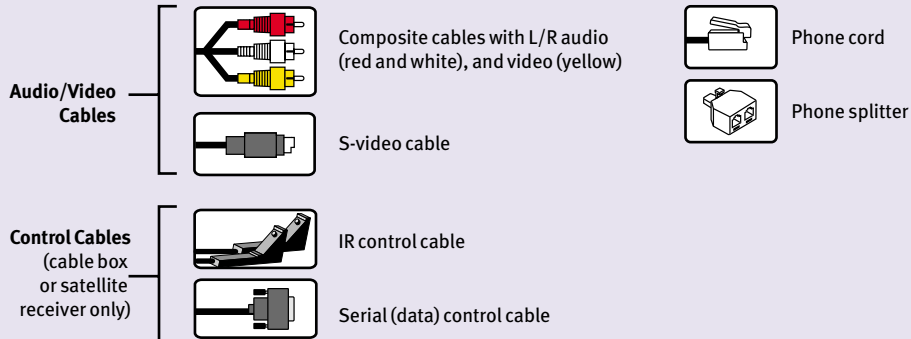
### Let's get started!

This guide describes the basics for setting up your new Sony SVR Recorder. Activating and installing a basic system takes about 25 minutes. Completing onscreen Guided Setup takes less than an hour.

See the *Installation Guide* for additional installation examples, further details, more diagrams, and troubleshooting. (E.g., it includes an example setup with a DVD player and A/V receiver, and one with a TV with only one input.)

#### Before you begin—get to know your cables!

(Don't worry if you don't use all of them.)



## First, activate the TiVo® service

Activate the TiVo service before setting up your recorder. The TiVo service provides your SVR recorder with the features of a TiVo DVR (Digital Video Recorder). The TiVo service brings you exclusive TiVo features such as Season Pass™ recordings, WishList™ searches, Showcases, TiVo Suggestions, and much more. The easiest way to activate is to visit [www.tivo.com/activate](http://www.tivo.com/activate). If you don't have Internet access, call TiVo Customer Service at 1-877-367-8486. Be sure to have the 15-digit TiVo service number of your recorder handy. (You can find it on the label on the back of your SVR Recorder.)

Write your service number here for reference (it begins with "110"): 110-\_\_\_\_\_

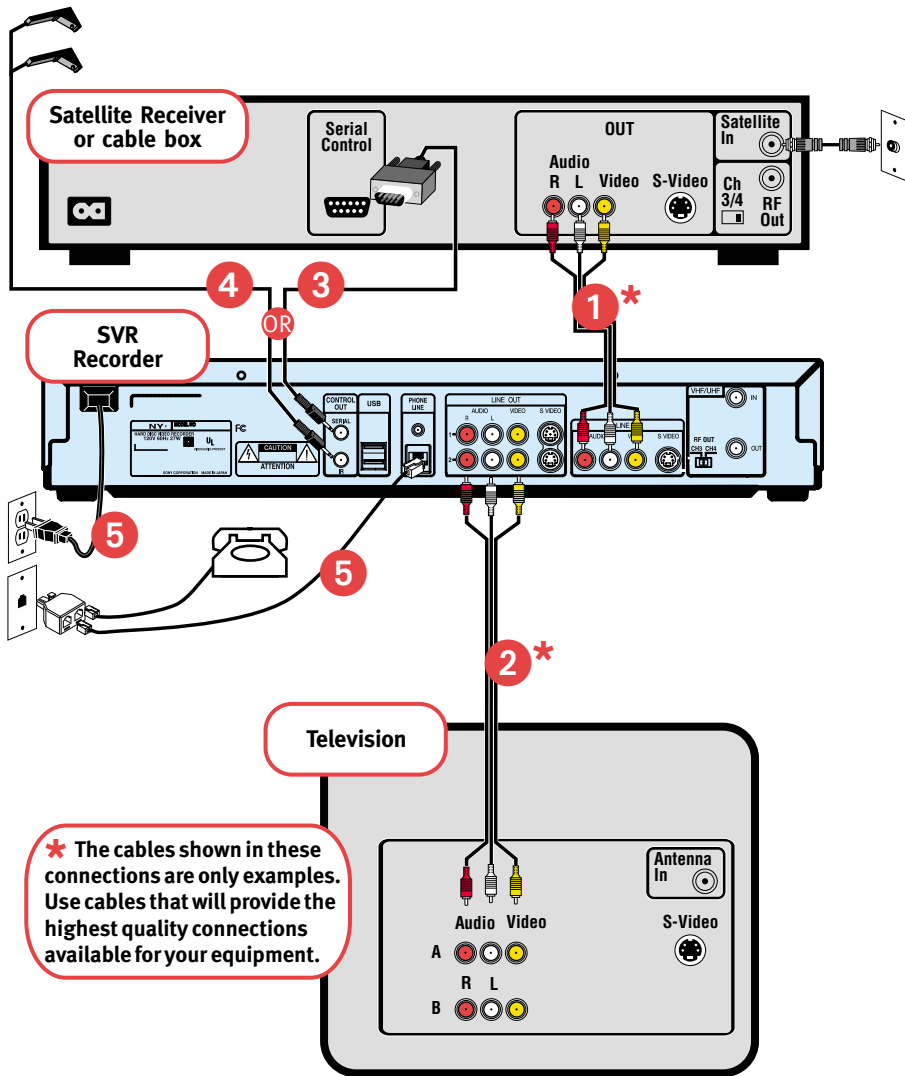
You can change your account information (for example, change your credit card information) online at Manage My Account, at [www.tivo.com/manage](http://www.tivo.com/manage).

After you have activated, you are ready to install your SVR Recorder. The inside of this guide provides four common installation examples.

To Installation Examples ▶

# INSTALLATION EXAMPLES

## ▶ SATELLITE or CABLE BOX



\* The cables shown in these connections are only examples. Use cables that will provide the highest quality connections available for your equipment.

**1** Connect **Satellite or Cable Box to SVR Recorder**. Use either a composite cable alone (shown), or connect an S-video cable and the L/R audio (red and white) ends of a composite cable.

**2** Connect the **SVR Recorder to the TV**. Use either a composite cable alone (shown), or connect an S-video cable and the L/R audio (red and white) ends of a composite cable.

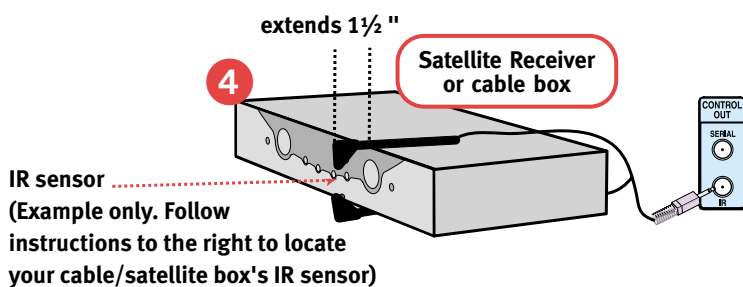
### Control Cable Connection.

To record shows or display live TV, the SVR 3000 must change the channel on your cable box or satellite receiver. To do so, it must send a signal through either an IR (infrared) or serial control cable. To connect a control cable, complete **either step 3 or step 4**, below.

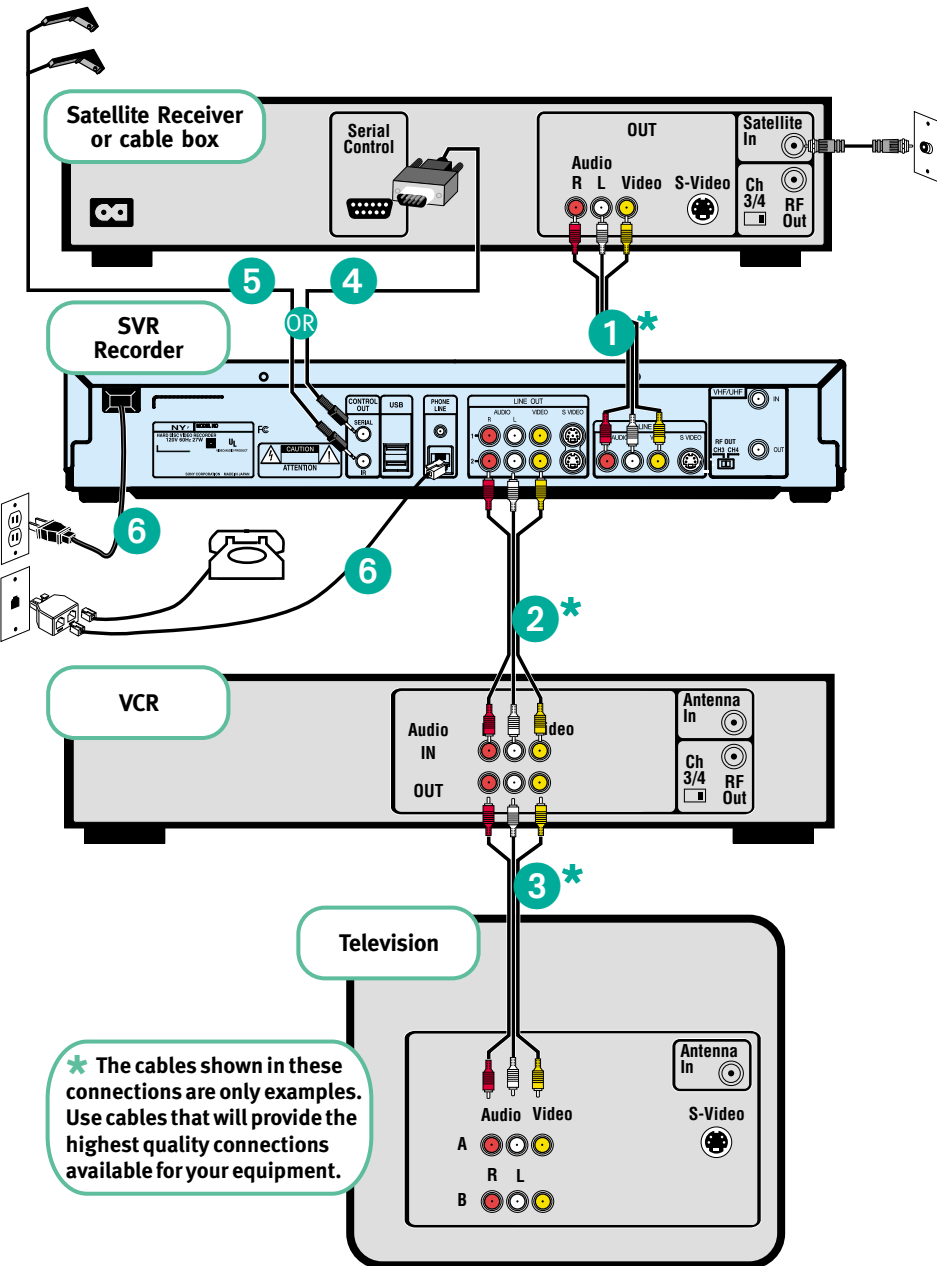
**3** If you have a **DIRECTV® satellite receiver with a serial input**. Connect the serial control cable from “Control Out-Serial” on the SVR Recorder to your satellite box. Skip to step **5**.

**4** If your cable or satellite box is not a **DIRECTV satellite receiver with a serial input**: Plug the metal end of the IR control cable into “Control Out-IR” on the SVR Recorder (see the picture below and to the left). Locate the IR sensor on the front of the cable or satellite box. It’s usually a tiny round bulb; if you shine a flashlight into the plastic window on the front of the box, you can see it. Mount the other two ends of the IR cable (the IR emitters) in front of the IR sensor. You can place the emitters above and below the box. The emitters should stick out about 1.5” from the front of the box. Use the provided adhesive strips to secure the emitters.

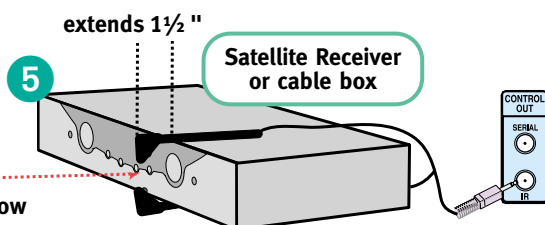
**5** Connect **Phone and Power**. See “Connect a telephone line” and “Power on and tune your TV,” in the far right panel.



## ► SATELLITE or CABLE BOX with VCR



\* The cables shown in these connections are only examples. Use cables that will provide the highest quality connections available for your equipment.



IR sensor  
(Example only. Follow instructions to the right to locate your cable/satellite box's IR sensor)

**1 Connect Satellite or Cable Box to SVR Recorder.** Use either a composite cable alone (shown), or an S-video cable and the L/R audio (red and white) ends of a composite cable.

**2 Connect the SVR Recorder to the VCR .** Use either a composite cable alone (shown), or connect an S-video cable and the L/R audio (red and white) ends of a composite cable. \*\*If you have a Sony VCR, see the note at the bottom of the next page.

**3 Connect the VCR to the TV .** Use either a composite cable alone (shown), or connect an S-video cable and the L/R audio (red and white) ends of a composite cable.

### Control Cable Connection.

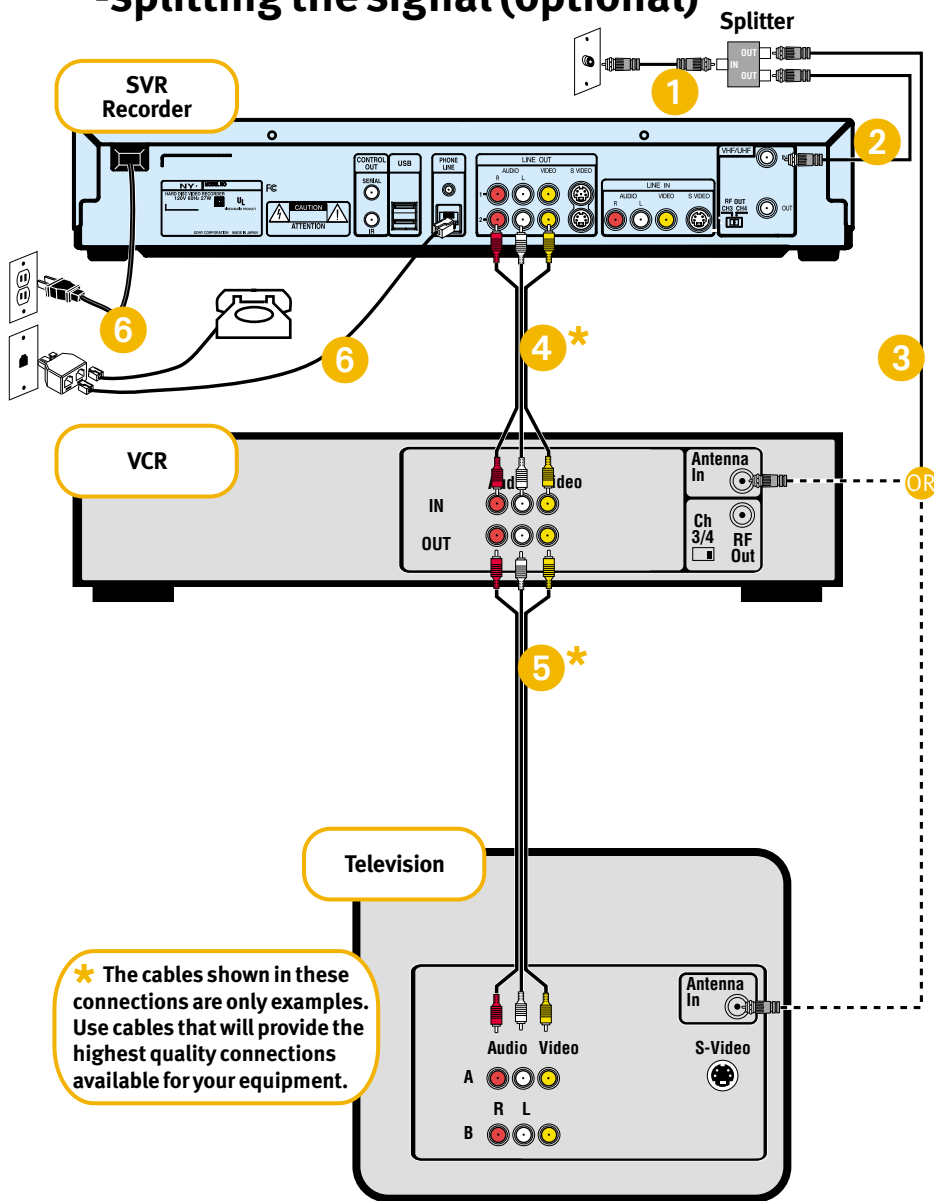
To record shows or display live TV, the SVR 3000 must change the channel on your cable box or satellite receiver. To do so, it must send a signal through either an IR (infrared) or serial control cable. To connect a control cable, complete **either step 4 or step 5**, below.

**4 If you have a DIRECTV® satellite receiver with a serial input.** Connect the serial control cable from “Control Out-Serial” on the SVR Recorder to your satellite box. Skip to step **6**.

**5 If your cable or satellite box is not a DIRECTV satellite receiver with a serial input:** Plug the metal end of the IR control cable into “Control Out-IR” on the SVR Recorder (see the picture below and to the left). Locate the IR sensor on the front of the cable or satellite box. It’s usually a tiny round bulb; if you shine a flashlight into the plastic window on the front of the box, you can see it. Mount the other two ends of the IR cable (the IR emitters) in front of the IR sensor. You can place the emitters above and below the box. The emitters should stick out about 1.5” from the front of the box. Use the provided adhesive strips to secure the emitters.

**6 Connect Phone and Power.** See “Connect a telephone line” and “Power on and tune your TV,”

## ▶ ANTENNA/CABLE without cable box -with VCR -splitting the signal (optional)



\* The cables shown in these connections are only examples. Use cables that will provide the highest quality connections available for your equipment.

\*\*If you have a Sony VCR, you can use the "Save to my VCR" feature available when you select a title in the Now Playing List. Plug the IR Control cable into the "Contol Out-IR" jack on the back of the SVR recorder; then place one of the IR control cable's black plastic IR emitters in front of the IR window on the Sony VCR. Use the provided adhesive strip to secure the IR emitter. For further details, see your *Installation Guide*.

**1 Connect your cable or antenna signal.** If you do not want to split the signal, connect the cable coming from the wall directly to the "VHF/UHF-IN" jack on the back of the SVR Recorder, and then skip to step **4**.

**If you want to split the signal (optional).** Splitting the signal allows you to watch one channel while the SVR Recorder records another. The splitter and extra RF cables are not provided. To split your signal, connect the cable coming from the wall to the input section of an RF splitter, then continue with step **2**.

**2 Connect cable or antenna to SVR Recorder.** Use an RF Coaxial cable (not supplied) to connect one output from the splitter to the "VHF/UHF-IN" jack on the back of the SVR Recorder.

**3 Connect cable or antenna to TV (or VCR).** Use an RF Coaxial cable (not supplied) to connect one output from the splitter to the RF In jack on your TV (or VCR).

After splitting your signal, you will switch between watching TV with the TiVo service, and bypassing the TiVo service. Use your TV or VCR's "Input," "Source," or "TV/Video" button to switch between the two.

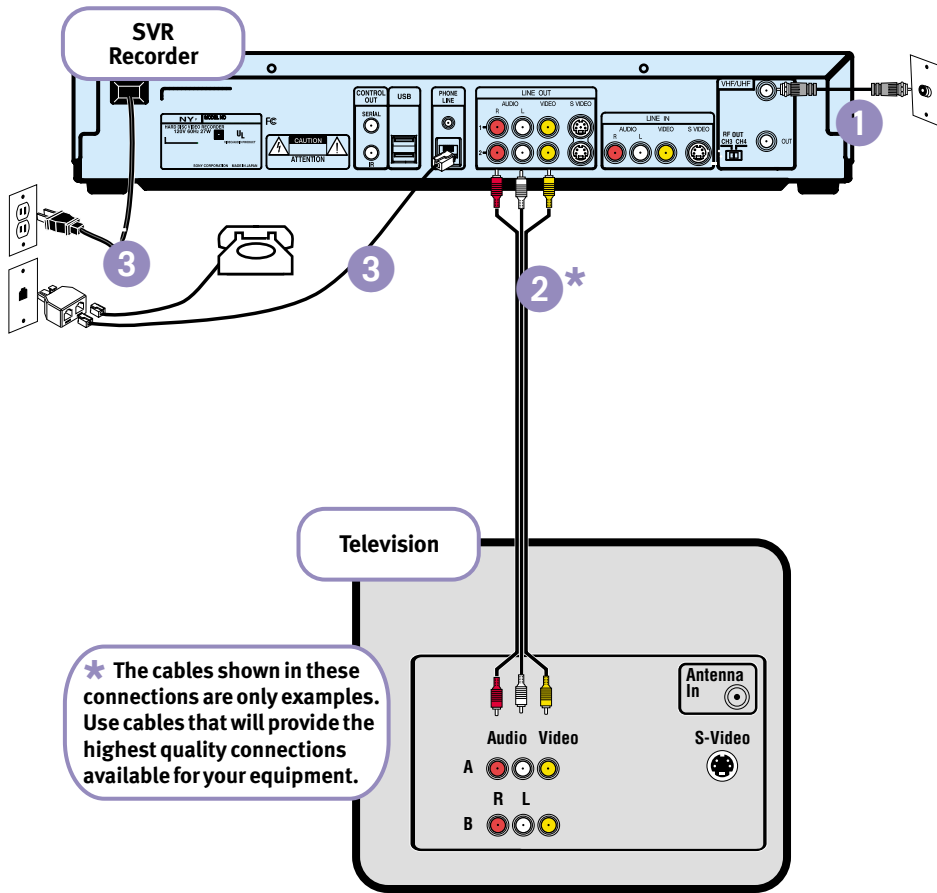
**4 Connect the SVR Recorder to the VCR.** Use either a composite cable alone (shown), or connect an S-video cable and the L/R audio (red and white) ends of a composite cable. \*\*If you have a Sony VCR, see the note beneath the diagram on the left.

**5 Connect the VCR to the TV.** Use either a composite cable alone (shown), or connect an S-video cable and the L/R audio (red and white) ends of a composite cable.

**6 Connect Phone and Power.** See "Connect a telephone line" and "Power on and tune your TV," to the right.

For more examples and details,  
see the *Installation Guide*.

## ▶ ANTENNA or CABLE without box



- 1 **Connect the cable or antenna signal to the SVR Recorder.** Connect the cable coming from the wall to the VHF/UHF-IN jack on the SVR Recorder.
- 2 **Connect the SVR Recorder to the TV.** Use either a composite cable alone (shown), or connect an S-video cable and the L/R audio (red and white) ends of a composite cable.
- 3 **Connect phone and power.** See "Connect a telephone line" and "Power on and tune your TV," below.

### Connect a telephone line

It is not necessary to install a separate phone line. Plug the recorder into any existing phone jack. If the phone jack is used for another phone, use the provided splitter. Do not connect the SVR Recorder to digital PBX systems (these allow many phones to share a single telephone number and are typically found in hotels and office buildings). You could permanently damage the SVR Recorder's modem.

**Don't have a phone close by? No problem!** The SVR Recorder ships with a 25' phone cord, and does not need to be connected all the time. Simply run the phone cord across the room to any phone jack within reach. After Guided Setup completes, you can unplug the phone line and store it with the SVR Recorder. You only need to connect to the phone line once or twice a week. Plug in the line, then go to Messages & Setup, then Recorder & Phone Setup, then Phone Connection, and choose Make Daily Call Now.

### Power on and tune your TV

Once you have connected all the cables, plug in the SVR Recorder and turn on your TV.

#### Find the correct TV input

Much like when you watch tapes on your VCR, you'll need to tune your TV to the correct channel or video source so it displays the Welcome screen. If you are using RF cables, tune to channel 3 or 4. If you are using composite or S-video, use the TV/Video or Input button on your TV. If you are passing the signal through your VCR, tune your TV the way you would to watch your VCR. Also try turning your VCR on or off. If your VCR has multiple inputs, you may need to select an input on the VCR as well.

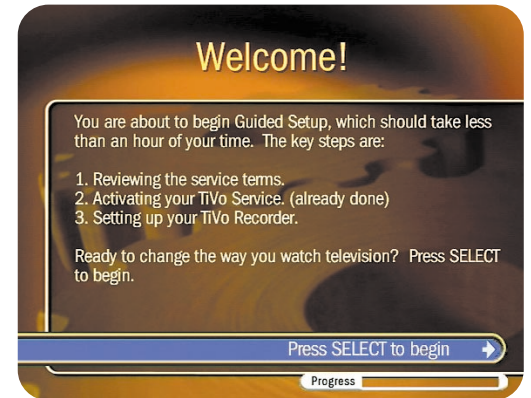


# STEP 2

## ▶ Complete Guided Setup

### Stepping through Guided Setup

Guided Setup is the last step before you can start using your SVR Recorder with the TiVo® service. The TiVo service lets you schedule Season Pass™ recordings, create WishList™ searches, use TiVo Suggestions, and take advantage of other exclusive TiVo DVR (digital video recorder) features. When you see the Welcome screen, you are ready to begin Guided Setup. The first several screens ask simple questions about your program source, zip code, and time zone. Use the SELECT button on the remote to select or deselect options, and the LEFT and RIGHT arrow buttons to move from screen to screen.



The Welcome screen is the first screen in Guided Setup.

### Helpful Hints (see the *Viewer's Guide* for more information)

#### Phone

- ▶ If you don't have a phone jack close to the SVR Recorder, you can use the included 25-foot phone cord to complete Guided Setup. Afterward, plug it in just once a week to make a call. Just press the TiVo button to go to TiVo Central®, then go to Messages & Setup, then Recorder & Phone Setup, then Phone Connection, and then choose Make Daily Call Now. Or purchase a wireless modem jack.
- ▶ Having trouble with the Guided Setup phone calls? Use the LEFT arrow button on the remote to go back to the Phone Dialing Options screen and try these steps: If you have call waiting, take out any prefix you may have inserted. Turn off dial tone detection. Turn off phone availability detection. (See the *Viewer's Guide* for details.)
- ▶ If you need to use your phone while a Guided Setup call is in progress, pick up the phone, wait 5 to 10 seconds, then hang up. When you pick up the phone again, the line should be free. You can complete Guided Setup later.

#### Channels



- ▶ During Guided Setup, you are asked to select a channel lineup. A channel lineup is the set of channels you subscribe to—like “Digital Extended Basic” or “DIRECTV-Boston, MA.” If you aren’t sure of your lineup, check your channel lineup card (you may have been provided with one when you signed up for service) or guess. You will be able to check your guess on the screen that follows. The channel numbers shown on the Channels You Receive screen should match your lineup. If not, use LEFT arrow to go back for a different lineup.
- ▶ Don’t forget to customize the list of channels you watch. It will make the SVR Recorder easier to use. Use the Channels You Receive screen to remove check marks for channels you don’t receive or never watch. If you want to make changes after you complete Guided Setup, you can find the Channels You Receive screen by selecting Messages & Setup, then My Preferences, then Channel Lists.

#### Billing

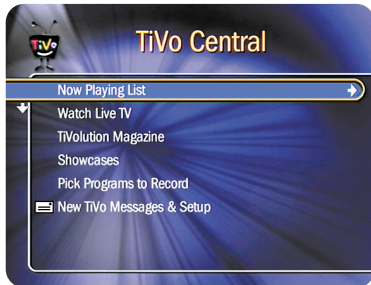
- ▶ Do you want to change your billing method or credit card information? After you activate the TiVo service, you can do all this and more by using Manage My Account, at [www.tivo.com/manage](http://www.tivo.com/manage).

# STEP 3

## ► Use the TiVo® service—it's easy!

### TiVo Central®

The TiVo button takes you to *TiVo Central*, where you can access all of the features unique to the TiVo® service.



### Now Playing List

Press the LIST button or press the TiVo button twice to go the *Now Playing List*. You'll find all your recorded programs here. Just highlight one and press PLAY to start watching.



### More of What You Like

Rate programs using the THUMBS buttons. Then check out *TiVo Suggestions* (in Pick Programs to Record) and watch for suggestions in the Now Playing List.

### ► Take a Tour to Learn More

The TiVo service lets you schedule Season Pass™ recordings, create WishList™ searches, use TiVo Suggestions, and take advantage of other exclusive TiVo DVR (digital video recorder) features. To learn more, read through the tours in Chapter 2 of the *Viewer's Guide*.

Refer to the Sony *Installation Guide* (and specifically the troubleshooting section) for questions about: your warranty, connecting the SVR Recorder, initial Guided Setup difficulties (e.g. phone calls failing), programming the Remote Control, changing channels, or if your system does not function properly. If you still have questions, contact Sony at:

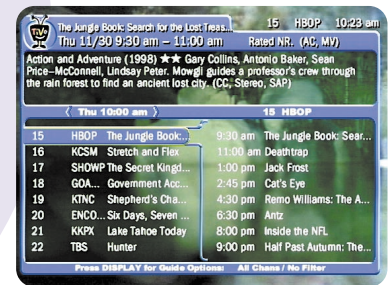
[www.sony.com/service](http://www.sony.com/service)

### Control Your TV and Stereo

You can program the POWER, VOLUME, MUTE, and TV INPUT buttons on the TiVo remote to control your TV and A/V stereo system. See the *Installation Guide* for instructions.

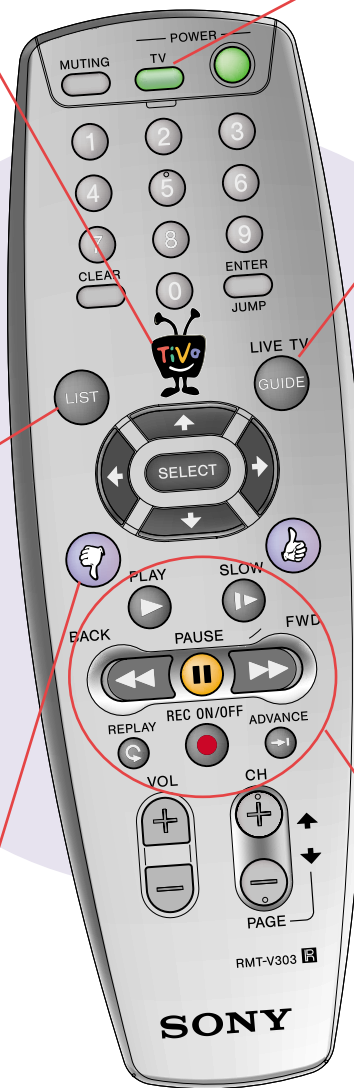
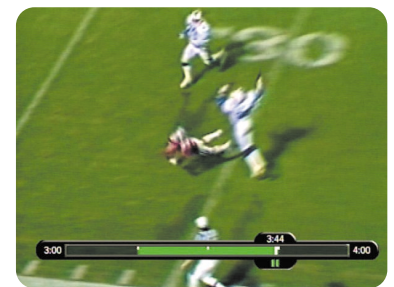
### Find Out What's on TV

Go straight to live TV by pressing the *LIVE TV/GUIDE* button. This button also displays the TiVo Live Guide, that lets you browse up to two weeks of program information, choose a show to watch, and set up recordings.



### Control Live TV

Pause TV for up to 30 minutes, rewind and fast forward at three speeds, and instant replay—all at the touch of a button.





## Free Manuals Download Website

<http://myh66.com>

<http://usermanuals.us>

<http://www.somanuals.com>

<http://www.4manuals.cc>

<http://www.manual-lib.com>

<http://www.404manual.com>

<http://www.luxmanual.com>

<http://aubethermostatmanual.com>

Golf course search by state

<http://golfingnear.com>

Email search by domain

<http://emailbydomain.com>

Auto manuals search

<http://auto.somanuals.com>

TV manuals search

<http://tv.somanuals.com>