



Getting to Know Your VGX-XL2A Digital Living System™

like.no.other™

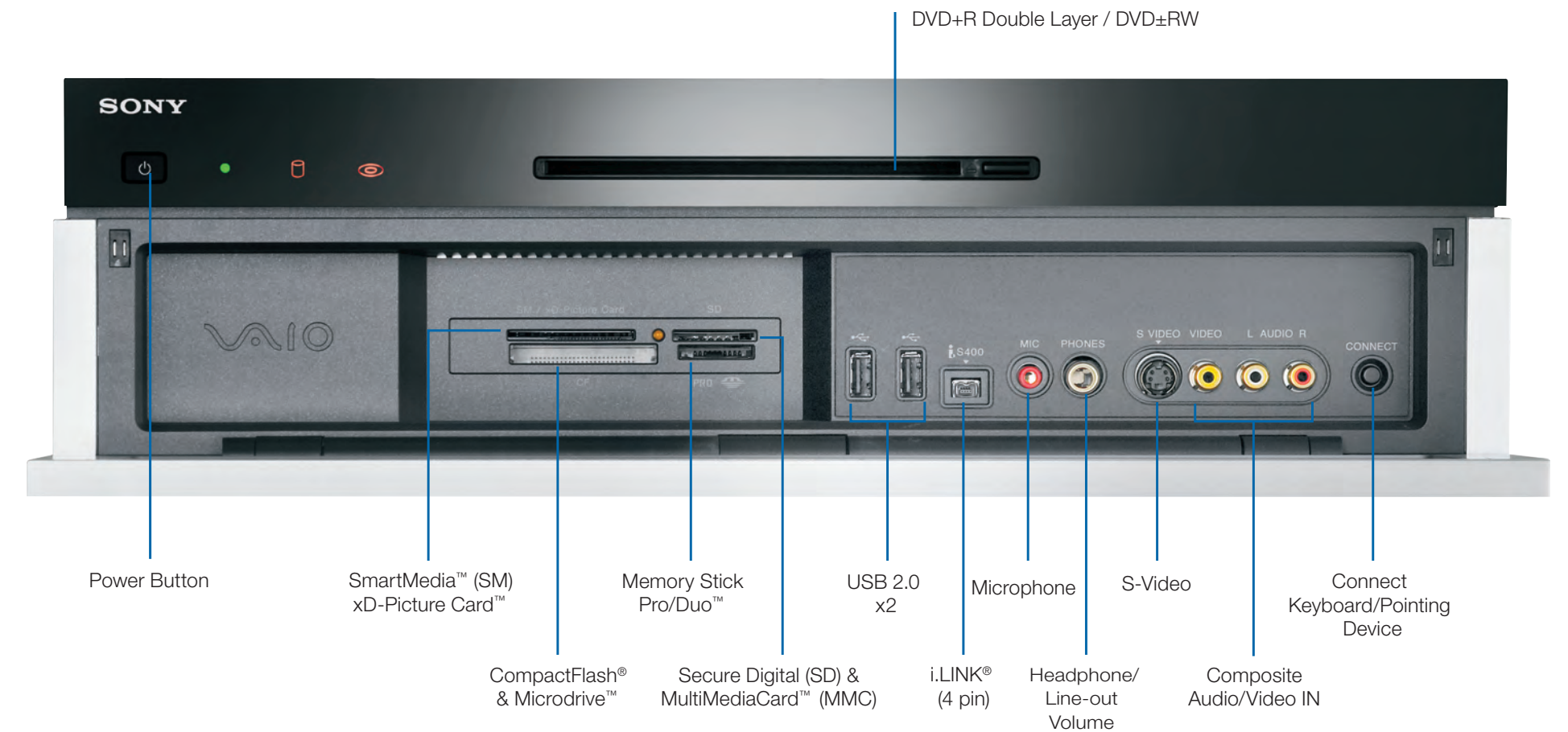


VGX-XL2A Digital Living System

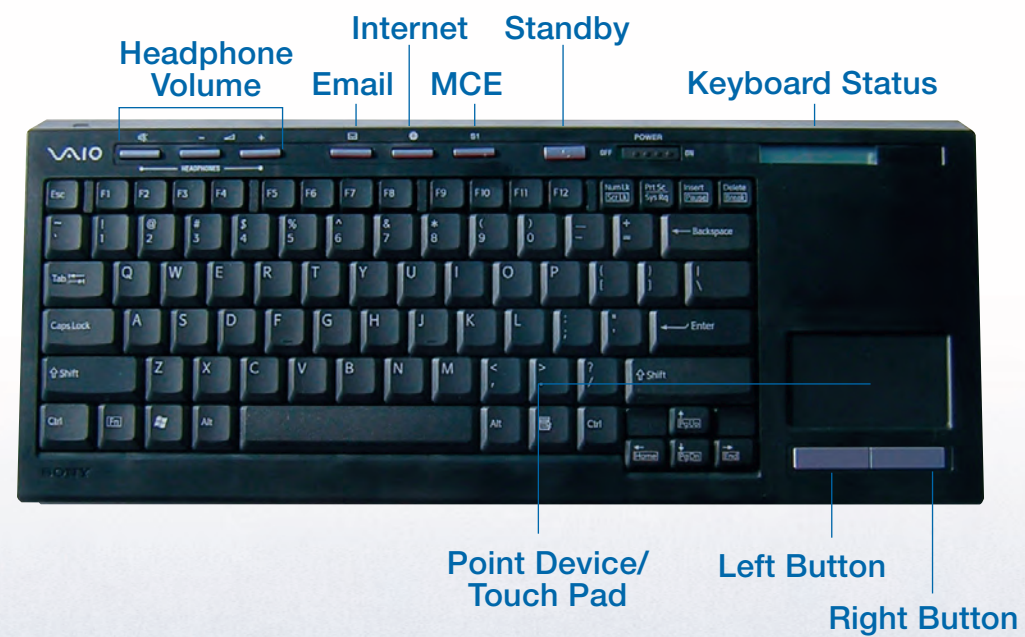


Before installation: Please make sure you have all the items shown above.

VGX-XL2A – Front Inputs & Outputs



Wireless Keyboard



Setting Up Keyboard

- Insert the Batteries**
- On the back of the keyboard, remove the battery compartment cover.
 - Insert four (4) Alkaline AA batteries oriented as shown in the battery compartment. (Supplied)
 - Replace the battery compartment cover.

Activate Wireless Keyboard Communication

Before using the keyboard, you must activate communications between the DLS computer and the wireless keyboard with integrated pointing device. Please see Step 4 Activate Wireless Keyboard Communications on back.

Remote Control



Note: When using the VAIO® remote control, remember to point the remote at the VGX-XL2A personal computer, not at the TV or monitor.

TV Volume Control Setup

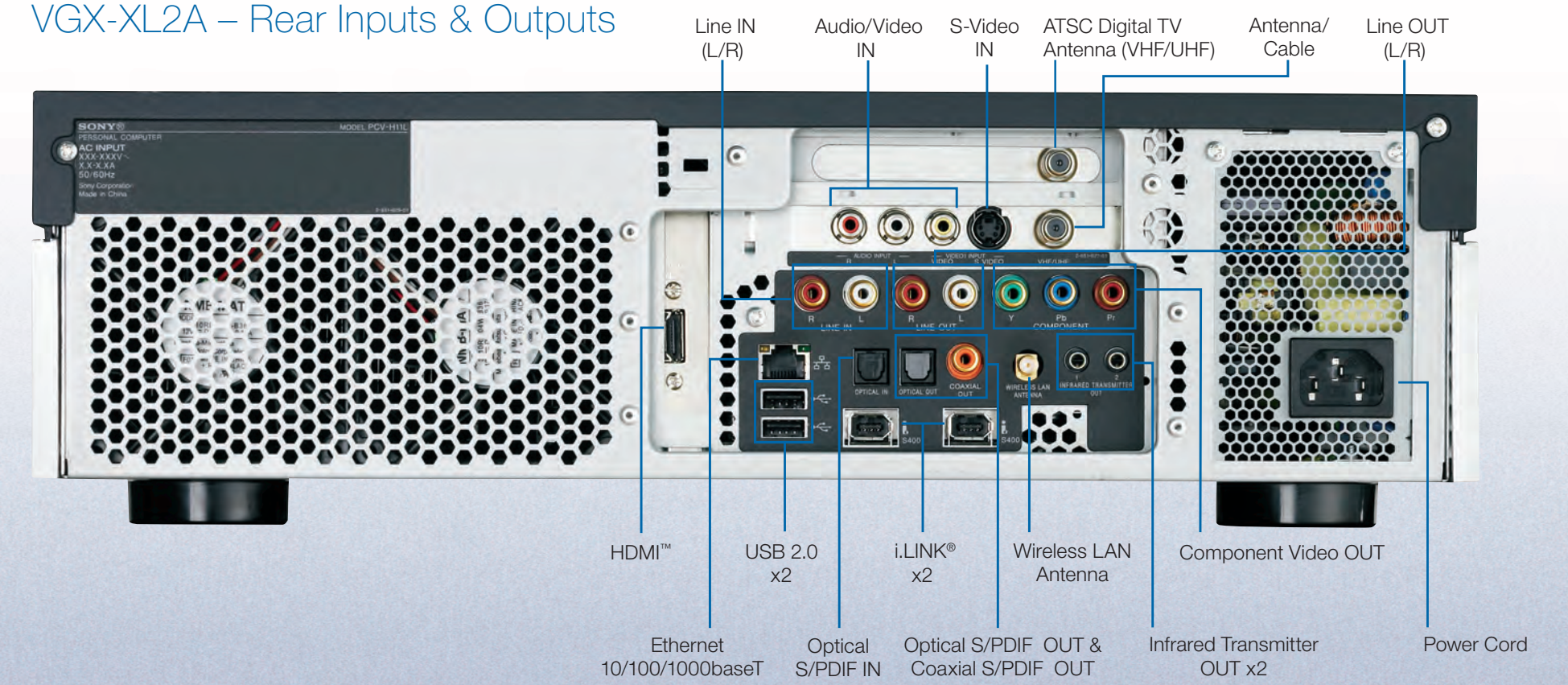
Preset the MCE remote control for TV volume

- Locate the input code number by selecting your specific manufacturer.

MCE (RC6) Default: 01
Sony: 02
Samsung: 03, 05, 06, 08, 11 or 13
Toshiba: 07 or 09
Panasonic: 04 or 10
Sharp: 07 or 12

- On the MCE remote control **press and hold** the OK button.
- Type** the input code number.
- Release the OK button. You should now be able to control your TV volume using your MCE remote control.

VGX-XL2A – Rear Inputs & Outputs



See back for setup instructions.



* 2 6 7 5 6 0 8 0 1 *

2-675-608-01

VAIO

Getting to Know Your VGX-XL2A Digital Living System™



SONY

like.no.other™

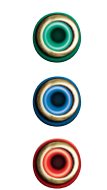
Step 1: Connecting your TV



If your TV has a **HDMI™** connector, use the supplied HDMI cable and connect one end to your TV and the other end to the HDMI connector on the back panel of the DLS computer.



If your TV has a **DVI-D** connector, use the supplied HDMI cable and the HDMI to DVI-D adapter. Insert the adapter in the HDMI connector on the back panel of the DLS computer. Then using the supplied HDMI cable, connect one end of the cable to the adapter and the other end to your TV.



If your TV has **component connectors (Y, Pb, Pr)**, use a RCA cable (not supplied) and connect one end to the corresponding component jacks on your TV and on the back panel of the DLS computer.



Note: If your TV has a HDMI connector and a DVI-D connector, Sony recommends using the HDMI connector.

Note: The HDMI cable carries both video and audio signals.

Note: You cannot use HDMI and Component connections at the same time.

Step 2: Connecting your Home Theater / Speakers



If your sound system has **two channels**, use the LINE OUT (L) (R) on the back panel of the DLS computer and the LINE IN audio composite connectors on your speakers.



If your sound system has **more than two channels**, use the supplied Optical S/PDIF cable and connect one end to the S/PDIF Optical OUT connector on the back panel of the DLS computer and connect the other end to the OPTICAL IN connector on your sound system.

Note: An optical/coaxial connection will provide a higher quality output than a composite connection.

Note: It is not necessary to use the optical or composite audio connections if you use the HDMI cable.

Step 3: Connecting to the Internet



Wired Network: Use an RJ-45 connector cable. Connect one end to the Ethernet connector on the DLS computer and the other end to your cable or DSL modem.



Wireless Network: Connect WLAN antenna to the system. Launch Marvell Client Utility Application. Select "station" as the operation mode. Then proceed to Windows Wireless Zero Configuration service to set up your connection with your preferred Access Point.

Step 4: Turning Power On

Make sure all hardware is connected and that power cables are plugged into properly grounded electrical outlets. (three prong outlets)

✓ **Turn on the power to the computer, TV, and speakers.**

✓ **Activate Wireless Keyboard Communication**

- Slide the Power button to ON.
- From the back of the keyboard, slide the Pointing Device button to ON.
- From the back of the keyboard, and the front panel of the DLS computer, press the Connect buttons simultaneously and hold a few seconds.
- Test the keyboard to make sure it is functioning properly.

Step 5: Software Setup



✓ **Microsoft® Windows® operating system Setup**

The first time you start your computer you will be presented with a series of screens for Windows® XP Setup. Please follow the on-screen instructions.

✓ **Sony Registration**

Please complete all information to register your Sony product. This makes it easier to keep your products updated and obtain technical support, if necessary.

Note: Once you complete Windows Setup and Sony Registration, do the following:

✓ **Check the picture quality of your TV or monitor.** If it is not correct, go to Step 7 Resolution Setup.

If Media Center automatically opens, and you need to adjust your picture quality, minimize Media Center and go to Step 6: Resolution Setup. When complete return to Media Center Setup.

✓ **Make sure your Internet connection is working properly.**

✓ **Media Center Setup**

The first time Media Center starts, you will be presented with a series of screens that will guide you through Media Center Setup. Please follow all on-screen instructions.

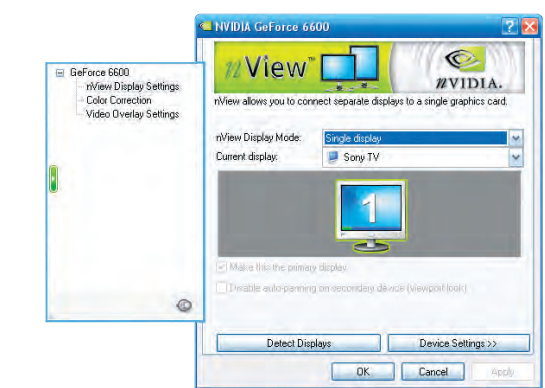
Media Center Wireless Network Note:

If you have an existing wireless network, and you wish to add the VGX-XL2A personal computer to the network, start Media Center and from Settings, go to General > Media Center Setup > Join Wireless Network. Then follow the on-screen instructions.

Step 6: Resolution Setup

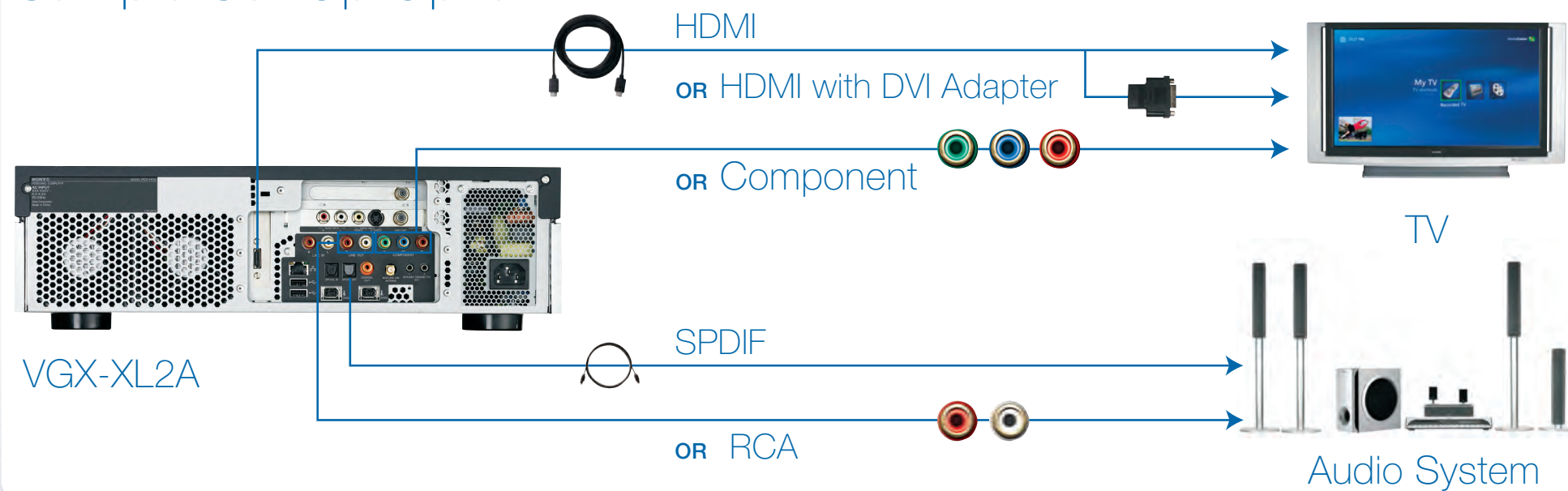
To set the resolution for your TV or Monitor, do the following:

- Using the pointing device on your wireless keyboard, right **click** anywhere on the Windows desktop.
- From the menu, point to or **click** NVIDIA® Display. A new menu option opens. The menu option name depends on what TV or monitor is connected to the computer.
- Click** the new menu command. The following screen appears.



- From the Directory list, **click** nView Display Settings, if necessary.
- Click** the Device Settings button.
- From the side menu, **click** TV Format. Select the appropriate option for your TV from the list.
- Click** the Apply button.
- Continue with Media Center Setup.

Sample Set-Up Option 1



Note: You can find more setup information in your computer's User Guide and in your TV or audio system documentation.

Sample Set-Up Option 2



VAIO® Support Central

Provides you with a single location for all of your support needs and allows you to easily access valuable support and technical information from Sony® and Microsoft®.

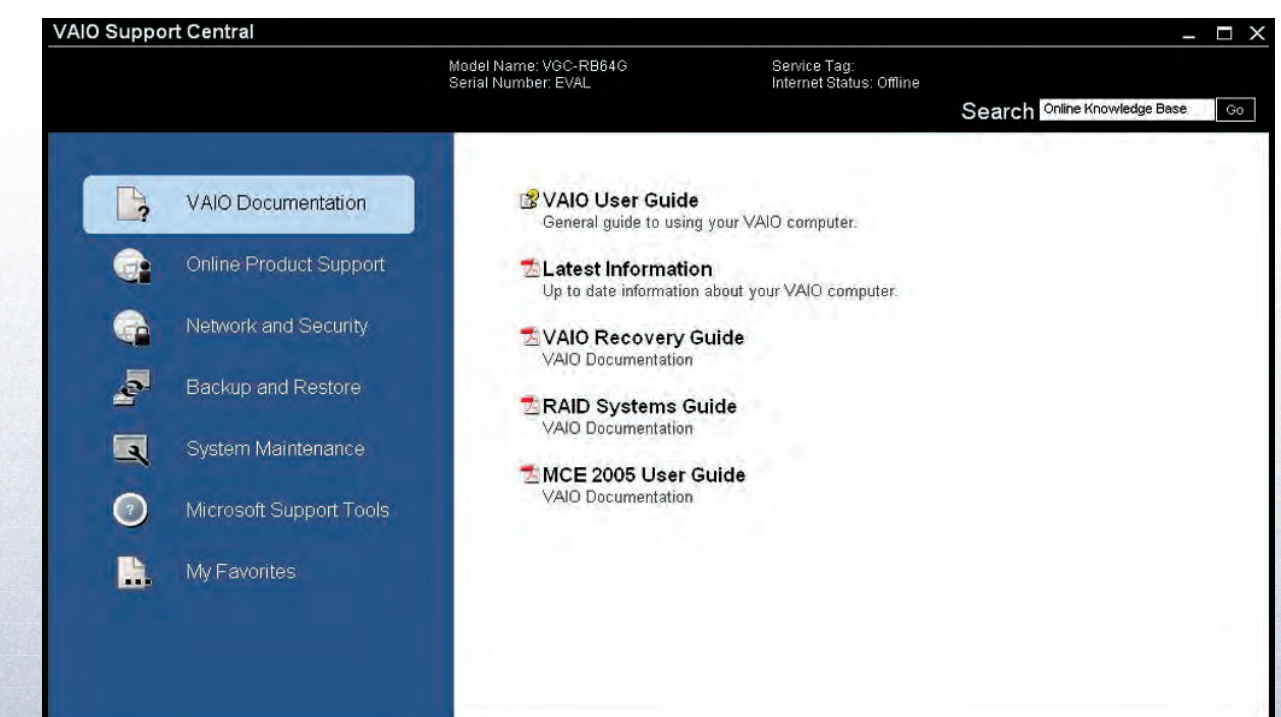
Keep your VAIO® computer's system software and operating system updated using VAIO Web Support and Microsoft Update.

Note: You must be connected to the Internet to access some of the VAIO Support Central features.

To access VAIO Support Central, do the following:

- Using your wireless keyboard w/ integrated pointing device, select Windows Start.
- From the Start menu, select All Programs.
- From the All Programs menu, select VAIO Support Central.

Note: To access the most updated information available for VGX-XL2A Digital Living System, go to Support Control Central > Documentation and select the VGX-XL2A DLS User Guide.



1 i.LINK is a trademark of Sony used only to designate that a product contains an IEEE 1394 connector. All products with an i.LINK connector may not communicate with each other.

©2006 Sony Electronics Inc. All rights reserved. Reproduction in whole or in part without written permission is prohibited. Sony, Digital Living System, i.LINK, Memory Stick, Memory Stick PRO, VAIO, and like.no.other are trademarks of Sony. Microsoft and Windows are registered trademarks of Microsoft Corporation. All other trademarks are trademarks of their respective owners. Printed in China.

Free Manuals Download Website

<http://myh66.com>

<http://usermanuals.us>

<http://www.somanuals.com>

<http://www.4manuals.cc>

<http://www.manual-lib.com>

<http://www.404manual.com>

<http://www.luxmanual.com>

<http://aubethermostatmanual.com>

Golf course search by state

<http://golfingnear.com>

Email search by domain

<http://emailbydomain.com>

Auto manuals search

<http://auto.somanuals.com>

TV manuals search

<http://tv.somanuals.com>