

SONY®

***VAIO Digital Studio™
Computer QuickStart***

Contents

Welcome	5
Features.....	5
Unpacking Your Computer	9
To Choose an Ergonomic Location for Your Computer....	11
Setting Up Your	
VAIO Digital Studio Computer	13
To Set Up Your Computer	13
To Turn on Your Computer	18
To Register Your Computer	19
To Set Up Your Dial-up Connection	20
To Set Up Power Management Modes.....	23
To Shut Down Your Computer	25
About The Software On Your Computer	27
Overview of Software Applications.....	27
For Answers to Your Software Questions	34
Troubleshooting	37
Topics	37
Notes on Use	51
Resources	56
Index	59

Welcome

Congratulations on your purchase of the Sony VAIO Digital Studio™ computer! Your new, high-performance, multimedia computer combines audio, video, and information technology features.

Features



Your computer may not be equipped with all of the hardware features listed in this section. To view the specific hardware configuration for your system, see the Specifications sheet.

VAIO AV applications

This suite of Sony original applications includes PictureGear™, Smart Capture, DVgate™, DigitalPrint, SonicStage™, MovieShaker™, VisualFlow™, and Media Bar™ DVD Player. These software applications make it easy to use advanced multimedia techniques to develop your personal audio and video creations. Using the i.LINK ports, you can capture, view, and share both still and video images, then catalog everything for fast, easy storage and retrieval.

DVD-RW drive (not available on all models)

This new optical storage technology provides increased storage capacity and a dynamic multimedia computing experience. Your state-of-the-art DVD-RW drive writes to DVD-R/DVD-RW and CD-R/CD-RW media, and plays your favorite DVDs and CDs. This drive also functions as the ideal solution for making backups and archiving data, with the ability to store up to 4.7 GB of data on a single DVD-R/DVD-RW media (You can store up to 650 MB of data on a single CD-R/CD-RW media). Save movies, videos and still images to share with family and friends.

DVD-ROM drive (not available on all models)

This optical storage technology provides increased storage capacity and a rich multimedia computing experience. Your DVD-ROM drive plays both DVDs and CDs.

CD-RW drive (not available on all models)

This drive is the ideal solution for making backups and archiving data, with the ability to store up to 650 MB of removable, rewritable storage on a single rewritable CD. Save your movies to CD-R or CD-RW media and share videos and images with family and friends.

CD-ROM drive (not available on all models)

You can play your favorite audio and video CDs using this high-quality CD-ROM drive.

i.LINK (IEEE1394) interface

Two built-in i.LINK ports, located on the front and rear panels, provide you with digital connection capability. The i.LINK name and logo identify a high-speed communication interface, which allows you to easily connect compatible digital camcorders.



i.LINK is a trademark of Sony used only to designate that a product contains an IEEE1394 connection. The i.LINK connection may vary, depending on the software applications, operating system and compatible i.LINK devices. All products with an i.LINK connection may not communicate with each other.

Please refer to the documentation that came with your compatible i.LINK device for information on operating conditions and proper connection. Before connecting compatible i.LINK PC peripherals to your system, such as an optical or hard disk drive, confirm their operating system compatibility and required operating conditions.

VAIO Smart keyboard

This PS/2® keyboard has programmable shortcut buttons for launching your favorite programs or accessing the Internet.

Sony audio and video quality

Take advantage of today's advanced multimedia applications, games, and entertainment software with the Sony high-fidelity audio system, high-powered 3-D graphics, and "Sony-Tuned" MPEG digital video playback.

Microsoft Windows XP operating system

Your system includes this latest consumer operating system from Microsoft®.

Preinstalled software

All the software on your computer is preinstalled, configured, and ready for you to use right out of the box.

Communications

You have the choice of a variety of popular online services to browse the Internet, access e-mail, send faxes, and much more.

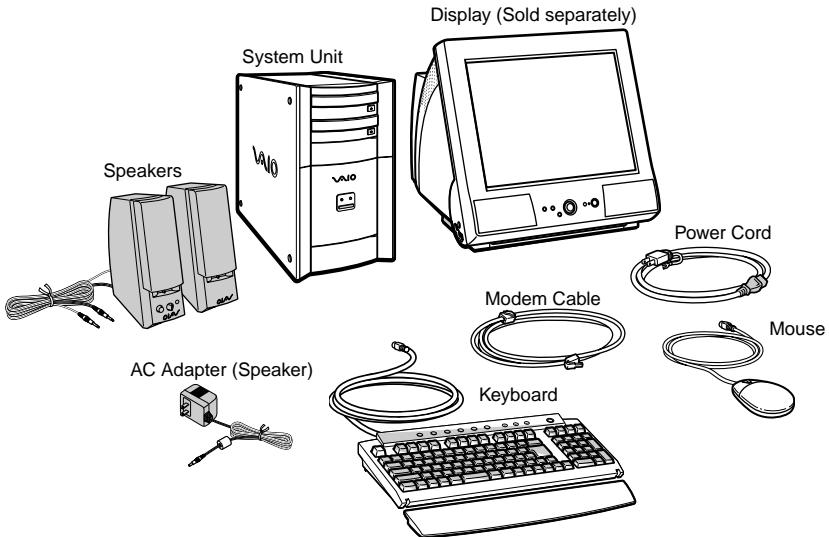
Exceptional performance

Your computer includes an Intel® processor, a 10BASE-T/100BASE-TX Fast Ethernet interface, and a V.90 data/fax modem.*

* Actual upload and download speeds may vary due to line conditions, ISP support, and government regulations.

Unpacking Your Computer

Computer and supplied accessories



Manuals

- ❑ **VAIO Digital Studio™ Computer QuickStart** — Contains information on unpacking and setting up your computer, supplementary updates, support information, and software information.
- ❑ **VAIO Digital Studio™ Computer User Guide** — Contains information on the hardware and preinstalled software applications included with your system. To access the online manual:
 - 1 Click Start in the Windows taskbar, then click VAIO Help and Support.
 - 2 From the VAIO Help and Support menu, click VAIO User Guide.
- ❑ **Giga Pocket™ Personal Video Recorder Getting Started Guide** — (For models equipped with Giga Pocket) Contains information on setting up and using the Giga Pocket Personal Video Recorder equipment and software applications.

- ❑ **Information About DVD Recording** — (For models equipped with a DVD-RW drive) Contains information designed to help you become familiar with your DVD-RW drive and the DVD recording software applications included with your computer.
- ❑ **Safety Information** — Contains safety and legal information about your VAIO computer.
- ❑ **Home Networking Solutions** — (For models equipped with a HomePNA modem) Contains information on using an installed HomePNA modem with Sony VAIO computers.
- ❑ **Specifications** — Contains information on the hardware and physical configurations of your VAIO computer.
- ❑ **Microsoft® Windows® XP Guide** — Contains information on how to use the basic features of the Windows® operating system.

Recovery CDs

- ❑ **System Recovery CD(s)** — Enables you to restore the software that shipped with your computer if it becomes corrupted or is erased. System Recovery CDs can only be used to restore the hard disk of the Sony computer you purchased.
- ❑ **Application Recovery CD(s)** — Enables you to reinstall individual applications if they become corrupted or are erased.
- ❑ **Driver Recovery CD** — Enables you to restore device drivers if they become corrupted or are erased.

Software Library

The Software Library contains the Microsoft software license agreement and the Sony end-user license agreement.

To Choose an Ergonomic Location for Your Computer

Before you get started, find the best location for your new computer.

Planning your workspace

- ❑ **Stable work surface** — Use a stable work surface large enough to support the computer and other peripheral equipment.
- ❑ **Ventilation** — Leave at least eight inches of space on the left and back sides of your computer to enable proper ventilation.
- ❑ **Placement of the keyboard, mouse, and other input devices** — Place your keyboard, mouse, and other input devices so that your arms and hands are in a relaxed, comfortable position. The keyboard should be directly in front of you. Adjust the level of the keyboard so that your lower arms are parallel to the floor. Keep your wrists in a relaxed position when you are using the keyboard—not angled up or down. Use the palmrest only briefly, for resting. While typing, never use the palmrest or rest your hands on the table. Position the mouse at the same level as the keyboard. Hold the mouse with a relaxed hand, and use your whole arm to move it. Take breaks during sessions with your computer. Excessive use of the mouse or a joystick may strain muscles or tendons.
- ❑ **Furniture and posture** — Sit in a chair with good back support and armrests. Adjust the level of the chair so your feet are flat on the floor. A footrest may make you more comfortable. Sit with relaxed, upright posture—avoid slouching forward or leaning far backward.
- ❑ **Viewing angle of the display** — Position the display 18 to 26 inches directly in front of you, with the top of the screen at or a little below eye level. Use the display’s tilting feature to find the best position. You can reduce eye strain and muscle fatigue by placing the display in the proper position.
- ❑ **Lighting** — Choose a location where windows and lights do not create glare and reflection on the display. Use indirect lighting to avoid bright spots on the display. You can also purchase accessories for your display that help reduce glare. Proper lighting adds to your comfort and work effectiveness.

Setting Up Your VAIO Digital Studio Computer

Your computer has many new and exciting features. This section contains information on setting up your computer and peripheral devices.

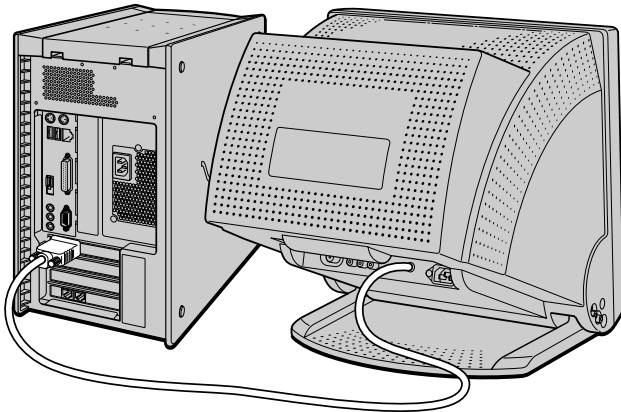
To Set Up Your Computer

Your computer may not be equipped with the same hardware features shown in this section. See the Specifications sheet for your system's configuration.

Connecting a display (monitor)

- 1 Plug the display cable into the Monitor port.
- 2 If necessary, plug the display cable into the rear of the display.

Connecting a display

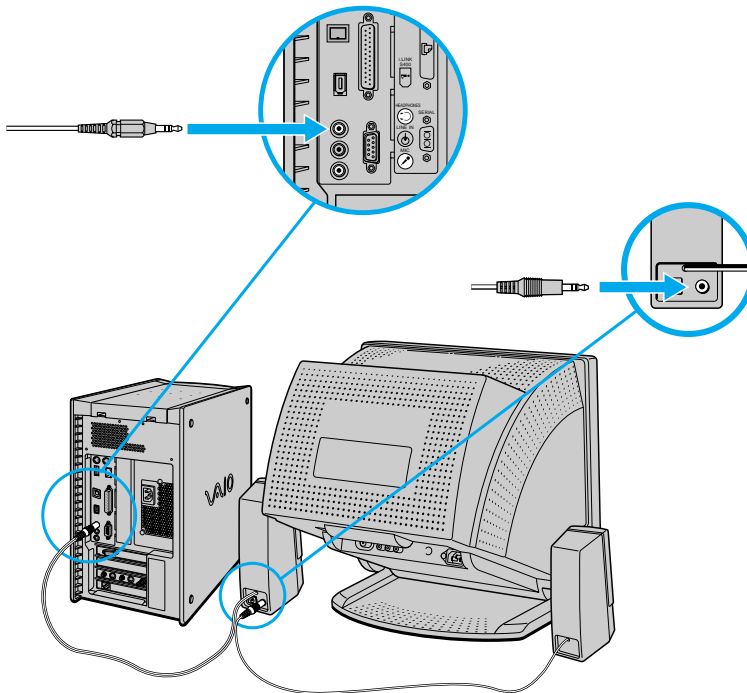


Install your equipment so that you can easily reach the power outlet in the event of an emergency.

Connecting the speakers

- 1 Plug the cable attached to the left speaker into the L Out jack on the back of the right speaker.
- 2 Plug the cable attached to the right speaker into the Headphones jack.
- 3 Plug the jack end of the AC adapter cord into the DC In jack on the back of the right speaker and plug the other end into a grounded AC wall outlet or power strip.

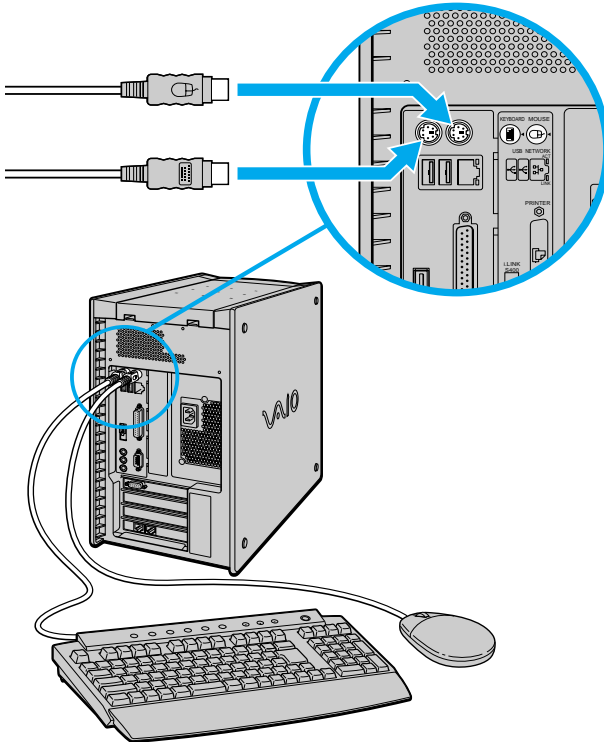
Connecting the speakers



Connecting the keyboard and mouse

- 1 Plug the keyboard cable into the Keyboard port on the back of the computer.
- 2 Plug the mouse cable into the Mouse port.

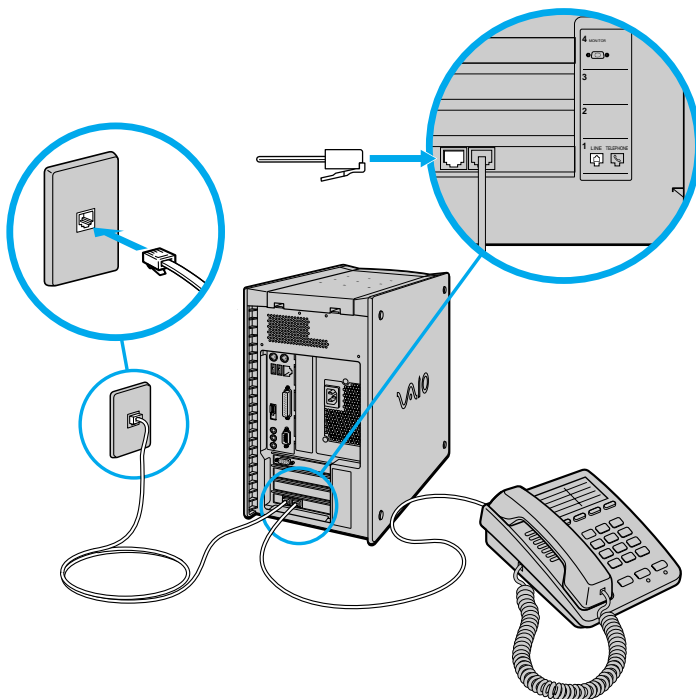
Connecting the keyboard and mouse



Connecting the modem cable

- 1 Unplug your telephone from the wall jack.
- 2 Plug the modem cable (supplied) into the Modem line jack on the computer, and then plug the other end of the cable into the wall jack.

Connecting the modem cable

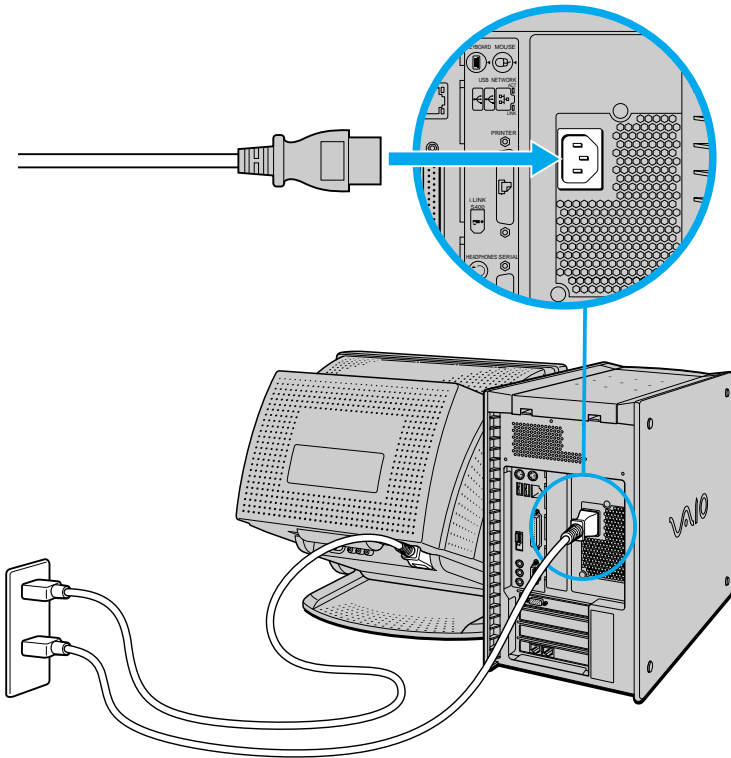


Your computer has a protective sticker  covering the Ethernet port located on the rear panel. Connect only 10BASE-T and 100BASE-TX cables to the Ethernet port. Using other cables or a telephone cable may result in an electric current overload and can cause a malfunction, excessive heat or fire in the port. For help on connecting to a network, see your network administrator.

Connecting the power cords

- 1 Plug the power cord into the back of the computer.
- 2 Plug both the display and power cords into a grounded AC wall outlet or a power strip.

Connecting the power cords

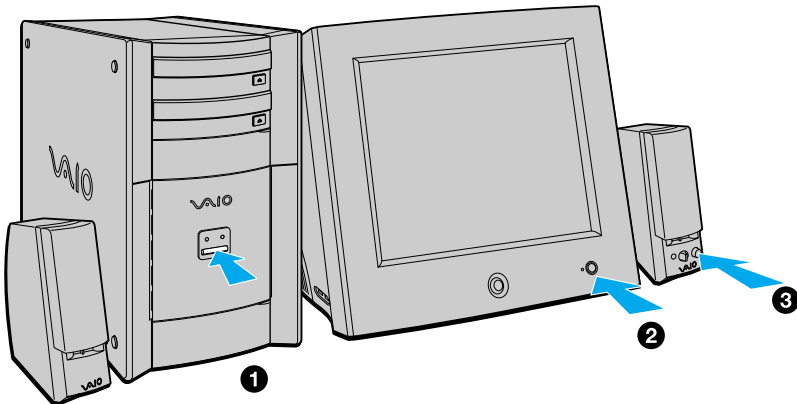


To Turn on Your Computer

Turning on your computer

- 1 Press the power switch on the computer to turn on the power.
- 2 Press the power switch on the display to turn on the power.
- 3 Press the power switch on the right speaker to turn on the power.

Turning on your computer



When you start your system for the first time, your computer may detect new equipment and display a dialog box that asks you to restart your computer. Please respond to this request immediately.

To Register Your Computer

Take advantage of Sony's commitment to quality customer support and receive these benefits by registering your computer:

- ❑ **Sony Customer Support** — Communicate with a Support Representative to troubleshoot problems you may be having with your computer.
- ❑ **Limited warranty** — Protect your investment. See the Warranty Card for more details.



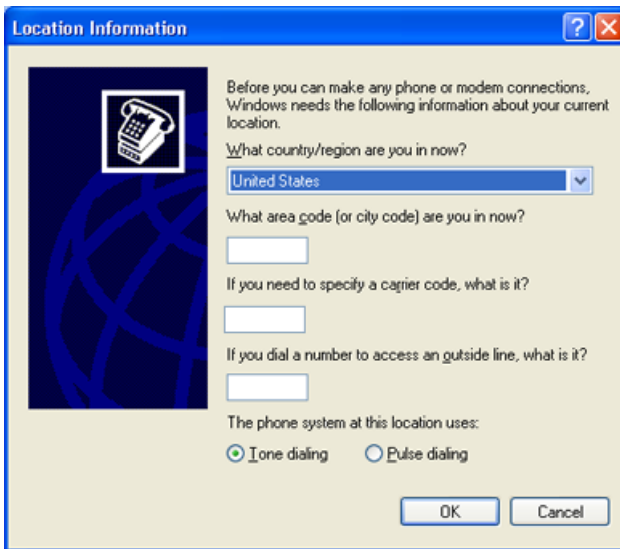
You are prompted to register your computer the first time you turn on the unit. Follow the on-screen instructions to complete the registration process. If you are not able to register your computer during the first session, you are provided with additional registration opportunities later.

To Set Up Your Dial-up Connection

The first time you turn your computer on, follow these steps to set up your dial-up connection:

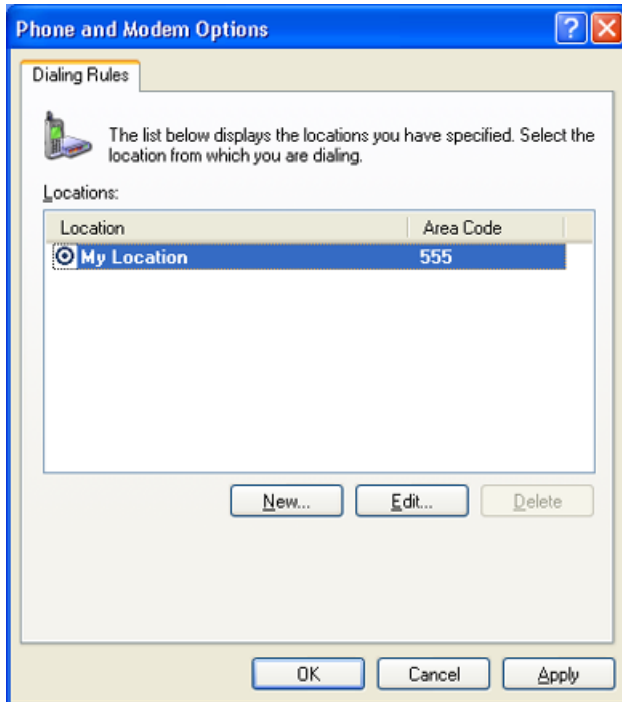
- 1 Click Start from the Windows taskbar and select All Programs.
- 2 Point to Accessories, point to Communications, and then click New Connection Wizard. The Location Information window appears.

Location Information window



- 3 Enter in your information as requested. Click OK. The Phone and Modem Options window appears.

Phone and Modem Options window



- 4 Click to select your dialing location and then click OK. The New Connection Wizard appears.

New Connection Wizard window



- 5 Follow the on-screen instructions to finish setting up your dial-up connection.

To Set Up Power Management Modes

When you plan to stop using your computer for a short period of time, you can set your system to automatically enter a power management mode. Your computer may have difficulty resuming from a power-saving mode, if the power scheme is not set up correctly.

Setting up your system's power management

Sony recommends following these steps for optimum power management:

- 1 Click Start in the Windows® taskbar and select Control Panel.
- 2 Select Performance and Maintenance. The Performance and Maintenance window appears.
- 3 Click Power Options. The Power Options Properties window appears.
- 4 Click the Hibernate tab and verify that the Enable hibernation check box is selected. Click Apply.
- 5 Click the Power Schemes tab. Select the Home/Office Desk power scheme.
- 6 In the section, "*Settings for Home/Office Desk power scheme,*" use the drop-down list to set a time value for System stand by or System hibernates. Do not set time values for both settings. Click Apply.
- 7 Click the Advanced tab. In the Power buttons section, "*When I press the power button on my computer,*" use the drop-down list and select Hibernate. Click Apply.
- 8 Click OK.

Your computer is set to enter a power-saving mode automatically. You can resume from this mode by briefly pressing the power button on your computer.

Stand by mode indicators

You can identify power management mode the computer is in by the color of the power indicator light

Color	Mode
Amber	Computer is in Stand by mode.
Blue	Computer is in Normal mode, ready to use.
No color	Computer is turned off or in Hibernate mode.

To Shut Down Your Computer

When you are ready to turn off your computer for an extended period of time, use this procedure.



To avoid loss of data, do not use the Power switch to turn off the computer.

Turning off your computer

- 1 Click Start in the Windows taskbar, then select Turn Off Computer.
The Turn Off Computer dialog box appears.
- 2 Select the Turn Off option.



Respond to any prompts about saving your documents.

- 3 Wait for your computer to turn off automatically—the power indicator light turns off.
- 4 Turn off any peripheral devices connected to your computer.



If you plan to turn off your computer for a short period of time, you may want to use Stand by mode instead.

About the power switch

If your system stops responding, press and hold the Power switch for more than six seconds to force your system to shut down. You may need to repeat this procedure if your system does not shut down on the first attempt.

About The Software On Your Computer

Your VAIIO® computer is ready to help you work, play, learn, and communicate as soon as you turn it on. This section provides an overview of the software titles preinstalled on your computer.

Overview of Software Applications



Your computer may not be supplied with all of the software applications listed, depending on the system configuration you purchased.

Adobe® Acrobat Reader®

Adobe Systems Inc.

Acrobat Reader software allows you to view, navigate, and print electronic documents in Adobe's Portable Document Format (PDF), an open file format that is intended to preserve the fidelity of documents created on all major computer platforms.

Adobe® Photoshop® Elements (On selected models)

Adobe Systems Inc.

Using state-of-the-art image editing tools, you can unleash your artistic ability and create digital images for print, e-mail and posting to the Web. The versatile image capturing options allow you to start working with digital and traditional photos immediately. Explore endless creative possibilities for your personal images with Adobe Photoshop Elements.

Adobe® Premiere® LE (On selected models)

Adobe Systems Inc.

Adobe Premiere LE offers interface and editing tools for producing movies for video, multimedia, or the Web. View source clips and edited footage simultaneously on-screen. You can create your own personal video clips that are up to three hours in length, with complete audio-video synchronization.

America Online®

America Online, Inc.

America Online is a popular Internet online service. Stay in touch with family and friends with easy-to-use e-mail. Manage your personal finances, get the latest news and sports scores, and chat with thousands of others who share your interests.

ArcSoft PhotoPrinter™ 2000 Pro

ArcSoft Inc.

PhotoPrinter Pro is an easy-to-use, yet advanced printing program that lets you quickly lay out multiple images in multiple sizes on a single sheet of paper. PhotoPrinter Pro offers a wide selection of templates including landscape, portrait, free-style, mixed sizes, custom templates and more. The application includes enhancement tools and special effects for improving photos while giving you the ability to add text to any image. With PhotoPrinter 2000 Pro you can create business cards, handouts, calendars, mailing labels, and much more.

DigitalPrint

Sony Electronics Inc.

This image management software makes it fun and easy to edit, import, and organize your digital pictures in a photo album for rich digital printing to any standard color laser or inkjet printer. Digital Print can also be used to make custom CD labels for your audio CDs.

DVgate™

Sony Electronics Inc.

Connect a digital video camera recorder to the i.LINK® port and capture your own video clips and still images. You can edit clips from your video, add new clips, and combine clips into new movie segments. You can also save your images in a variety of popular file formats.

DVDit!™ for VAIO (On selected models)

Sonic Solutions

DVDit! is a new and exciting production software that is easy to use. DVDit! has easy-to-use features, that automatically convert your multimedia source files into the correct format for recording onto a DVD-R or CD-R, or a DVD folder on your system hard drive. You can combine your favorite AVI, MPEG and digital stills to create professional, high quality DVDs.

EarthLink™ Network Total Access

EarthLink Network Inc.

An Internet Service Provider that supplies access, information, and assistance to its customers, introducing them to the Internet. Member benefits include e-mail, newsgroups, a Personal Start Page, a free 6 MB Web site, a member magazine, and 24-hour technical support.

Giga Pocket™ Personal Video Recorder (On selected models)

Sony Electronics Inc.

Giga Pocket Personal Video Recorder is a unique set of hardware and software components that provide you with excellent TV viewing, recording and playback experiences. You can watch and record your favorite TV programs from your computer, create custom playlists, and play your Video Capsules on other computers. Giga Pocket enables your computer, TV, VCR, and other video player devices to work in harmony.

Media Bar™ DVD Player

Sony Electronics Inc.

Media Bar DVD Player is created especially for high-quality DVD playback. You can enjoy the superior digital video quality and the effects features. You can rewind or fast-forward scenes from the DVD Player monitor as you would with any ordinary DVD player, to easily find the scene you want to view. Typical DVD playback features are available, such as multiple angles, audio language tracks, and subtitles. Media Bar DVD Player seamlessly integrates a premium audio/visual experience with an easy-to-use software interface.

Microsoft® Internet Explorer

Microsoft Corp.

Internet Explorer delivers the World Wide Web the way you want it. It's secure, easy to use, and you can personalize how you access the Internet. Outlook Express and other features of Internet Explorer deliver a great Internet experience.

Microsoft Office XP Professional (On selected models)

Microsoft Corp.

Microsoft Office XP redefines the relationship between people and software by providing a smarter, simpler way of working. New Office XP features include context-sensitive smart tags, enhanced formatting options, and more, that enable you to continually integrate additional services into Office and access information anytime.

Microsoft Office XP Small Business Edition (On selected models)

Microsoft Corp.

With Microsoft Office XP you'll find a powerful new technology that will help you get work done more quickly by providing real-time, context-sensitive options for important actions, from formatting to error correction. Task panes consolidate important tasks into a single integrated view, enabling you to conduct searches, launch and format documents, and view the contents of your Clipboard from one location.

Microsoft® Outlook® Express

Microsoft Corp.

This messaging tool that takes your e-mail and newsgroup communications to new heights. Outlook Express is easy to set up and use, and provides you with secure, personalized, and comprehensive features that protect and enhance your online communication experience.

Microsoft® Word (On selected models)

Microsoft Corp.

Microsoft Word makes it easy to create common Web, e-mail, and print documents for use around the world. It embraces HTML as a first-class file format and extends Word's ease-of-use to the Web and e-mail. Word also extends that ease-of-use to international users, making it easy to create multilingual documents.

MovieShaker™

Sony Electronics Inc.

Sony's original MovieShaker software creates personal movies that have transitions, background music, and text. Just import your video clips and "shake" with a click of the mouse. Your personal movies are easy to create and fun to share with family and friends.

PC-Cillin® 2000

Trend Micro, Inc.

PC-Cillin provides portable, easy-to-use, real-time antivirus security at your computer's entry point (beaming, synchronization, Internet access) to defend against potential threats hidden inside files, e-mail, or on the Web.

PicoPlayer™

Sony Electronics Inc.

PicoPlayer software is a video player application that enables you to use Giga Pocket™ Personal Video Recorder functions on a computer that does not have Giga Pocket Personal Video Recorder installed. You can play Video Capsules created by Giga Pocket Personal Video Recorder. If a Giga Pocket equipped computer is available on your home network, you can use Giga Pocket Server to watch TV and use the Giga Pocket Server's TV programming and recording functions.

PictureGear™

Sony Electronics Inc.

This image management software displays images from your hard drive, a Sony digital still camera, or a Sony Mavica® camera. The images appear in a convenient light-table format, so that you can easily view the contents of an entire folder.

Quicken® 2002

Intuit Inc.

Quicken is the fastest, easiest way to organize your finances. Quicken works just like your checkbook, so it's easy to learn and use. You can even pay your bills online. Quicken manages all of your finances, bank accounts, credit cards, investments, and loans.

RealJukebox®

RealNetworks Inc.

RealJukebox is a popular digital music system that gives you the ability to easily acquire, play and manage digital music files. You can locate and download your favorite music from the Internet and organize your own personal music collection.

RealPlayer®

RealNetworks Inc.

RealPlayer is a high-quality streaming media player that supports many digital media formats. The user-friendly interface has enhanced navigation capabilities, allowing you to access and enjoy audio and video programming over the Internet. RealPlayer is your gateway to a superb Internet multimedia experience.

RecordNow™ DX (On selected models)

VERITAS Software Corp.

RecordNow is the ideal DVD-RW/CD-RW disc mastering software for all your simple recording needs. The new RecordNow DX wizard makes it easy for the novice user to start recording right away, while the more advanced user will appreciate extended features such as simultaneous recording jobs, a detailed activity log, and the ability to customize drive settings.

Simple DVD Maker (On selected models)

Sony Electronics Inc.

Simple DVD Maker software enables you to write Giga Pocket™ Video Capsules and video Playlists to DVD-R/DVD-RW media, using DVD video format. The DVDs that you create can be played back with compatible DVD players and computers that have compatible DVD drives.

Smart Capture

Sony Electronics Inc.

Smart Capture is a fun new way to send multimedia messages via e-mail. Smart Capture manages the i.LINK connection between your notebook and a Sony Digital Handycam Camcorder that supports the i.LINK interface. It allows you to capture compressed video or still images and save them to your hard disk drive or share via e-mail. A smart solution for computer, digital audio/video and network convergence.

SonicStage™ (On selected models)

Sony Electronics Inc.

This new jukebox application adds a host of new features to its predecessor, OpenMG™ Jukebox. Continuing to take advantage of Sony's copyright-protected ATRAC3™ format for high-quality digital audio storage, SonicStage sports a new Music Visualizer, a sleek new player skin design, audio CD burning capability, and a parametric equalizer for fine-tuning audio playback.

SonicStage™ Premium (On selected models)

Sony Electronics Inc.

SonicStage Premium software is a special jukebox application that supports high quality digital audio playback and recording from the NetMD™, FM Tuner, and DVD-RW devices in your VAIO® MX Desktop PC. Recording from external analog and digital audio devices, such as CD players and MiniDisc players, is also supported. SonicStage Premium software includes several standard jukebox features, including a music visualizer, audio CD burning capability, and a parametric equalizer for fine-tuning audio playback.

Sony on Yahoo!

Yahoo! Inc.

Personalize your own web portal with Sony on Yahoo! Get a free webmail account, customized news and local weather reports, comics, and more.

VAIO Action Setup

Sony Electronics Inc.

VAIO Action Setup manages the settings for your computer's Shortcut keys.

VisualFlow™

Sony Electronics Inc.

VisualFlow software is a state-of-the-art Sony multimedia browser designed specifically for Memory Stick® media. It displays any still picture, movie or sound file stored in a Memory Stick media in a visually pleasing, artistic manner. VisualFlow software not only plays a selected movie or sound file, but also enables playback of files by other applications like PictureGear™, Memory Stick Slideshow and Windows® Explorer.

WordPerfect®

Corel Corp.

WordPerfect is the word processor component of the WordPerfect Office suite. Create professional-looking documents, such as newsletters, reports and brochures with this robust word processing application, adding graphics, charts and tables with ease. Features such as RealTime Preview enable you to preview formatting before applying it to your documents, and Reveal Codes increases the control you have over your document structure.

For Answers to Your Software Questions

This section provides support information for your computer's preinstalled software applications. Check this support listing to locate information from the Internet, by e-mail, or by telephone.



Your computer may not be supplied with all of the software applications listed, depending on the system configuration you purchased.

Support for preinstalled software

Adobe® Acrobat Reader®, Photoshop® Elements, Premiere® LE (On selected models) (Adobe Systems Inc.)

Web site	http://www.adobe.com
phone	206-675-6126 (fee-based support)
fax	206-628-5737
e-mail	techdocs@adobe.com
hours	M - F, 6 AM - 5 PM PST

America Online® (America Online, Inc.)

Web site	http://www.aol.com
phone	800-827-6364
hours	7 days a week, 24 hours a day

ArcSoft PhotoPrinter® 2000 Pro (ArcSoft, Inc.)

Web site	http://www.arcsoft.com
phone	510-440-9901
e-mail	support@arcsoft.com
hours	M - F, 8:30 AM - 5:30 PM PST

**DVDit™ for VAIO (On selected models)
(Sonic Solutions)**

Web site <http://www.dvdit.com>

Online Support <http://www.dvdit.com/support>

phone 877-DVD-1124*

e-mail support@dvdit.com

hours M - F, 9 AM - 6 PM PST

* Telephone support is fee-based per incident and available only within the U.S. and Canada.
Online support is free of charge.

EarthLink™ Network Total Access (EarthLink Network Inc.)

Web site <http://help.earthlink.net/techsupport>

phone 800-395-8410

e-mail support@earthlink.net

hours 7 days a week, 24 hours a day

**Microsoft® Windows® XP operating system, Internet Explorer, Office XP Professional (On selected models), Office XP Small Business Edition (On selected models), Outlook® Express, Word (On selected models)
(Microsoft Corporation)**

Web site <http://www.sony.com/pcsupport>

phone 888-4-SONY-PC (888-476-6972)*

hours 7 days a week, 24 hours a day

* Support from 888-4-SONY-PC is free of charge for 90 days after the original date of purchase.

PC-Cillin® 2000 (Trend Micro, Inc.)

Web site <http://www.antivirus.com/pc-cillin>

phone 949-387-7800; 900-820-8324*

e-mail support@trendmicro.com

hours M - F, 8AM - 5PM PST

* Support from 949-987-7800 is free of charge. Support from 900-820-8324 is fee-based.

Quicken® 2002 Basic (Intuit, Inc.)

Web site and online support	http://www.intuit.com/support
phone	900-555-4688
hours	7 days a week, 24 hours a day

RealPlayer®, RealJukebox (RealNetworks, Inc.)

Web site	http://service.real.com/rjoptions.html
e-mail	http://service.real.com/help/call.html

RecordNow™ DX (VERITAS Software Corp.)

Web site	http://support.veritas.com
phone	800-326-9551 *

* Telephone support is provided by Sony.

Sony Applications (Sony Electronics Inc.)

Web site and online support	http://www.sony.com/pcsupport
phone	888-4-SONY-PC (888-476-6972)*
hours	7 days a week, 24 hours a day

* Support from 888-4-SONY-PC is free of charge for 90 days after the original date of purchase.

WordPerfect® (Corel Corporation)

Web site	http://www.corel.com/support/product_specific/wp10.htm
phone	613-274-0500*
hours	M - F, 8:30 AM - 7:30 PM EST

* Support from 613-274-0500 is fee-based. The online support is free of charge.

Sony Service Center

For the Sony Service Center nearest you, call 1-888-4-SONY-PC (1-888-476-6972). This service is free of charge for 90 days after the original date of purchase.

Troubleshooting

This section describes how to solve common problems you may encounter when using your computer. Many problems have simple solutions, so try these suggestions before you call Sony Customer Support.

Topics

My computer does not start.

- Check that the computer is plugged into a power source and that it is turned on. Check that the power light is lit on the front panel of the computer.
- Confirm that a disk is not in the floppy disk drive (unless you are using a bootable floppy disk).
- Confirm that the power cord and all cables are connected firmly.
- If you plugged the computer into a power strip or Uninterruptible Power Supply (UPS), make sure the power strip or UPS is turned on and working.
- Check that the monitor is plugged into a power source and turned on. Check that the brightness and contrast controls are adjusted correctly. See the manual that came with your display for details.
- Check that the computer is not in stand by mode.

My files are corrupted or deleted. I want to recover applications that came with my computer.

See “To Use the Application Recovery CD(s)” in the online User Guide, for more information. You can access the online User Guide as follows:

- 1 Click Start in the Windows taskbar, then click VAIO Help and Support.
- 2 From the VAIO Help and Support menu, click VAIO User Guide.

My drivers are corrupted or deleted. I want to recover drivers that came with my computer.

See “To Use the Driver Recovery CD” in the online User Guide, for more information. You can access the online User Guide as follows:

- 1 Click Start in the Windows taskbar, then click VAIO Help and Support.
- 2 From the VAIO Help and Support menu, click VAIO User Guide.

My computer or software application stopped responding.

You can try to locate and close the software application that has stopped responding.

- 1 Press the Ctrl+Alt+Delete keys. The Windows Task Manager window appears.
- 2 From the Applications tab, locate the application that has the status message, “Not responding.”
- 3 Select the application that has a Not Responding status and click End Task. Windows attempts to close the application.

If your computer does not respond or the application does not close, try the following steps:

- 1 Save any open files, if possible.
- 2 Press the Alt+F4 keys. The Turn Off Computer window appears.
- 3 Click the Restart button.

If your computer still does not respond and you cannot restart, shut down your computer by pressing and holding the power switch for more than six seconds.

If the software application continues to stop responding or causes your computer to stop responding, contact the software publisher or designated technical support provider.



Pressing and holding the power switch for more than six seconds, may result in the loss of data from files that are currently open.

Why does the Windows® operating system stop responding during shutdown?

The Windows operating system may not shut down properly for many reasons, including incompatible or conflicting drivers, damaged files, or non-responsive hardware. For troubleshooting information, you can search Windows Help.

- 1 Click Start in the Windows taskbar and select VAIO Help and Support. The VAIO Help and Support dialog box appears.
- 2 Select Fixing a Problem and then select Startup and Shut Down problems. A list of specific problem topics appears on the right side of the dialog box.
- 3 Select Startup and Shutdown Troubleshooter. Follow the on-screen instructions according to your specific situation.

How do I change the parallel port type to ECP, EPP, or bi-directional?

You can change the parallel port type using the System Setup utility (CMOS Setup Utility). To access System Setup:

- 1 Click Start in the Windows taskbar and select Turn Off Computer. Select Restart.
- 2 When the Sony screen displays, press the F2 key on your keyboard.
- 3 Select the Advanced tab from the Setup Utility screen.
- 4 Select "I/O Device Configuration" and press Enter.
- 5 Use the arrow keys to highlight Parallel Port Mode and press Enter.



You can toggle between the Normal (bi-directional), EPP, ECP, and ECP+EPP options using the directional arrow keys.

- 6 Select the desired setting displays, and press Enter.
- 7 Press the F10 key to Save and Exit.

My optical drive tray does not open.

There are two methods for opening your optical drive tray:

- ❑ Use the Eject button
 - 1 Make sure the computer is turned on.
 - 2 Press the Eject button on the drive.
- ❑ Use the My Computer icon
 - 1 Click Start in the Windows taskbar, then select My Computer.
 - 2 Right-click the appropriate optical drive icon.
 - 3 Select Eject from the shortcut menu.



Avoid using adhesive labels to identify your CD media. Adhesive labels may come off while the CD media is in use in your optical drive(s) and may cause damage to the unit.

I cannot play a DVD or CD.

- ❑ After inserting your optical disc, wait a few seconds for it to be detected before trying to access it.
- ❑ Verify that the disc is in the tray with the label side facing up.
- ❑ Install your CD or DVD software according to the manufacturer's instructions.
- ❑ If your drive reads some DVDs or CDs, but not others, check the shiny side of the disc for dirt or scratches. You may also need to clean the disc drive lens with an appropriate cleaner.



To recover the CD or DVD software applications that are preinstalled on your computer, see "To Use the Application Recovery CD(s)" for more information.

I cannot play a DVD.

If a region code warning appears when you are using the DVD player application, it may be that the region code of the DVD you are trying to play is incompatible with the region code setting of your optical drive. A region code is listed on the disc packaging. Region code indicators such as “1” or “ALL” are labeled on some DVDs to indicate the type of player that can play the disc. Unless a “1” or “ALL” appears on the DVD or on its packaging, you cannot play the disc on this system.

If you hear audio but cannot see video, your computer’s video resolution may be set too high. To improve video resolution, verify that your screen area is set to 1024 x 768, using 32-bit color (preset factory default). To check your video resolution, see the Troubleshooting topic, “How do I change the video resolution of my display?”



If your video card utilizes system memory, you may improve video resolution by changing your screen area to 800 x 600, using 16-bit color. See your Specifications sheet for details about your computer’s video RAM.

If you see video but cannot hear audio, check all of the following:

- Verify that your DVD player’s mute feature is turned off.
- Check the master volume setting in the Audio Mixer.
- Check the volume settings on your computer speakers.
- Check the connections between your speakers and the computer.
- Verify that drivers are installed properly, by following these steps:
 - 1 Click Start in the Windows taskbar, then select Control Panel.
 - 2 Click Performance and Maintenance and then click Systems. The System Properties dialog box appears.
 - 3 Select the Hardware tab and then select the Device Manager button to view installed drivers.

A dirty or damaged disc may also cause the computer to stop responding while it tries to read the disc. If necessary, remove the disc and check that it is not dirty or damaged.



To recover the CD or DVD software applications that are preinstalled on your computer, see “To Use the Application Recovery CD(s)” for more information.

When I click an application icon, a message such as “You must insert the application CD into your drive” appears and the software does not start.

- ❑ Some software applications require specific files that are located on the application’s CD-ROM. Insert the disc and try starting the program again.
- ❑ Check to make sure you inserted the CD-ROM with the label side facing up.

Why doesn't my optical drive (DVD-RW or CD-RW) record at the highest speed?

If you are having difficulty formatting DVD-RW or CD-RW media for recording purposes, try changing the write speed to a lower setting.

See the online Help or documentation that came with your CD or DVD recording software application for details on adjusting write speed settings.

Why is my computer operating improperly after downloading the CD-burning component of RealJukebox® software?

If you choose to download and use the optional RealJukebox software’s CD-burning component to create CDs, the software feature may interfere with your computer’s normal system operations.

For VAIO® computers that are equipped with all of the necessary components for creating a CD-R or CD-RW, Sony recommends using the SonicStage software application to create CDs. SonicStage software is preinstalled on your computer.

How do I change the video resolution of my display?

- 1 Click Start in the Windows taskbar and then select Control Panel.
- 2 Select Appearances and Themes, then select “Change the screen resolution.”
- 3 Click the Settings tab.
- 4 Change the Screen resolution and Color quality to the desired levels.
- 5 Click Apply and then click OK.

Why is there no sound in any application?

- ❑ Check that the speakers are plugged into the Headphones jack.
- ❑ If your speakers have a mute button, verify that it is turned off.
- ❑ If your speakers are powered by batteries, verify that the batteries are inserted properly and that they are charged.
- ❑ If your speakers use an external power source, verify that the power cord is plugged into a grounded wall outlet or power strip.
- ❑ If your speakers have volume control, check the volume level.
- ❑ You cannot hear sound from your speakers if headphones are connected to your computer.
- ❑ If the software application you are using has its own volume control, check that the volume is turned up.
- ❑ Check the volume controls in the Windows® operating system using these steps:
 - 1 Click Start in the Windows taskbar, then select Control Panel.
 - 2 Select Sounds, Speech, and Audio Devices, then click “Adjust the system volume.”
 - 3 From the Volume tab, adjust the Device volume by moving the slider bar to the desired sound level. Verify that the Mute option is not selected.
- ❑ Check that the Mute check box is not selected in the Windows volume control.



You may need to reinstall the sound drivers. See “To Use the Driver Recovery CD” for more information.

My modem connection is slow.

Many factors influence modem connection speed:

- ❑ Telephone line noise
- ❑ Incompatibility with other telephone equipment such as fax machines or other modems.
- ❑ Internet Service Providers (ISP) connection capability may vary.

If you think your modem is not connecting properly to other PC-based modems, fax machines, or your ISP, check the following:

- ❑ Contact your phone company and ask them to verify that your phone line is free from line noise.
- ❑ If your problem is fax-related, check that there are no problems with the fax machine you are calling and that it is compatible with fax modems.
- ❑ For optimum performance, verify that your ISP point of presence (POP) phone number is compliant with V.90 standards.
- ❑ If you are having a problem connecting with your ISP, check that they are not experiencing technical problems.
- ❑ Try connecting your modem through another phone line, if available.

My modem does not work.

Your modem may be experiencing equipment or software conflicts. If your modem is not functioning properly, check the following:

- ❑ Check that the phone line is plugged into the Line jack.
- ❑ Check that the phone line is working properly. You can verify the line by plugging in an external device such as a standard telephone or fax machine and listening for a dial tone.
- ❑ Check that the access phone number (POP) is correct.
- ❑ All software applications that are preinstalled by Sony are compatible with your computer's modem. If you have installed other software, contact the software publisher for information on how to configure the software in order to recognize the modem.
- ❑ If it appears that your modem is not functioning properly, check the device status.

- 1 Click Start in the Windows taskbar, then click Control Panel.

- 2 Click Printers and Other Hardware and then select Phone and Modem Options.
- 3 From the Modems tab, click to select your modem.
- 4 Click Properties. The Modem Properties window appears.
- 5 Review the information in the Device status section. If your modem is not working properly, click the Troubleshoot button. The VAIO Help and Support Center window appears.
- 6 Follow the on-screen instructions to resolve the problem.



You may need to reinstall the modem drivers. See “To Use the Driver Recovery CD” for more information.

How do I change my modem to rotary or Touch-Tone dialing?

- 1 Click Start in the Windows taskbar, then click Control Panel.
- 2 Click Printers and Other Hardware, then click Phone and Modem options.
- 3 From the Dialing Rules tab, click Edit. The Edit Location dialog box appears.
- 4 Select the Tone or Pulse option. Click OK.

My microphone does not work.

Check that the microphone is plugged into the Microphone jack.

My microphone is too sensitive to background noise.

If you find there is too much background noise when you record sound, you should adjust the microphone gain by following these steps:

- 1 Click Start in the Windows taskbar, then click Control Panel.
- 2 Click Sounds, Speech, and Audio Devices, then click Sounds and Audio Devices.
- 3 From the Audio tab, locate the Sound recording section and click the Volume button. The Recording Control dialog box appears.

- 4 Select the Options menu and click Properties. The Properties dialog box appears.
- 5 In the section, “Adjust volume for,” select the Recording option. Click OK.
- 6 From the Recording Control dialog box, decrease the microphone volume level by moving the slider bar down.
- 7 Close the Recording Control dialog box and then close the Sounds and Audio Devices Properties window.

My mouse does not work.

- Check that the mouse is plugged securely into the Mouse port.
- Save and close all open applications. Turn off your computer, wait approximately 10 seconds, and then restart your computer.
- There may be dust or dirt inside the mouse mechanism. To clean the mouse, follow these steps:
 - 1 Save and close all applications, and turn off your computer.
 - 2 Turn the mouse upside down.
 - 3 Remove the mouse ball cover on the back of the mouse by turning clockwise the ring that covers the mouse ball.
 - 4 Turn the mouse upright, and drop the mouse ball into your hand.
 - 5 Using a piece of tape, remove any dust or dirt on the mouse ball and inside the mouse ball socket.
 - 6 Return the mouse ball to the socket, and replace the mouse ball cover. Secure the cover by turning the ring counter-clockwise.



You may need to reinstall the mouse drivers. See “To Use the Driver Recovery CD” for more information.

My mouse needs to be set up for left-hand use.

- 1 Click Start in the Windows taskbar, then click Control Panel.
- 2 Click Printers and Other Hardware, then click Mouse. The Mouse Properties dialog box appears.
- 3 From the Buttons tab, select “Switch primary and secondary buttons” under the Button Configuration options.
- 4 Click Apply, then click OK.

My keyboard does not work.

- Check that the keyboard is securely plugged into the Keyboard port.
- Save and close all open applications. Turn off your computer, wait approximately 10 seconds, and then restart your computer.

I cannot find the Windows® taskbar.

The Windows taskbar may be hidden or minimized.

- Use the mouse to locate a hidden taskbar by pointing to the left, right, top, and bottom edges of the screen. The taskbar appears when the cursor is placed over its location.
 - 1 Right-click on the taskbar and select Properties from the shortcut menu.
 - 2 Clear the check box for Autohide the taskbar, then click OK.
- Use the mouse to locate a minimized taskbar by pointing to the left, right, top and bottom edges of the display screen. The taskbar has been located when the cursor changes to a double arrow cursor. Left-click and drag away from the edge of the display screen. The minimized taskbar resizes and becomes visible.

Why is my system running slowly?

- The system responsiveness varies depending with the number of applications that are open and running. Close any applications that you are not currently using.
- Increasing the system memory may also help. For information on installing memory, please see the online VAIO User Guide.

How do I install a printer?

- ❑ If your printer has a USB, IEEE1394, or infrared connection, contact the printer manufacturer for information or updates that may be required for proper installation.
- ❑ Check the printer manufacturer's Web site for the latest drivers for your operating system before proceeding with installation. Some printers do not function properly without the updated drivers for specific operating systems.
- ❑ To install your printer, follow these steps:
 - 1 Click Start in the Windows taskbar, then click Control Panel.
 - 2 Click Printers and Other Hardware, then click Add a Printer.
 - 3 From the Add Printer Wizard, click Next.
 - 4 Select Local Printer, then click Next.



Place a check mark in the box for "Automatically detect and install my Plug and Play printer", if you are installing a recently manufactured printer with Plug and Play capability.

- 5 Select the appropriate port, usually LPT1, and then click Next.
- 6 Select the appropriate printer manufacturer and model
- 7 Follow the on-screen instructions to print a test page and complete printer installation.



If the printer is not included in the list and the printer manufacturer included a disk with a Windows XP Printer driver, choose Have Disk, enter the appropriate path for the disk or CD and click OK.

If the printer is not included on the list and no drivers are included with the printer, choose an alternate printer driver that your printer may emulate. Refer to the manual that came with your printer for specific emulation information.

My connected printer doesn't function after the computer resumes from a power saving mode.

Clear the printer memory by turning the printer off for approximately 10 seconds, and then turning it back on.

To contact Sony for technical support

For further technical assistance, call 1-888-4-SONY-PC (1-888-476-6972) or access the Sony Computing Support Web site at:
<http://www.sony.com/pcsupport>.

Notes on Use

The information in this section provides basic procedures to follow when handling your computer, components, and accessories.

The power source

- ❑ Your computer operates on 100–120 V AC 50/60 Hz only.
- ❑ Plug all the power cords for your computer and its peripheral equipment into the same AC supply line. AC derived from different supply lines may result in voltage differences that can cause unstable operation or unwanted weak currents at the time of connection.
- ❑ Do not share the AC outlet with any other power-consuming equipment, such as copying machines or shredders.
- ❑ You can purchase a power strip with a surge protector. This device prevents damage to your computer caused by sudden power surges such as those that may occur during an electrical storm.
- ❑ If you live in an area that experiences frequent power fluctuations, you may want to purchase an Uninterruptible Power Supply (UPS). This device contains both a surge protector and a battery backup. The surge protector prevents damage to your computer caused by power surges. The battery backup safeguards your data during a brief period of power loss.
- ❑ The power control button on the front panel does not turn off the system AC power. To remove power from the system, you must turn off the computer and then unplug the AC power cord from the wall outlet or power strip.
- ❑ Do not place heavy objects on the power cord.
- ❑ Do not operate the system with the cover removed. Always reinstall the cover before turning on the system.
- ❑ To disconnect the cord, pull it out by the plug. Never pull the cord itself.
- ❑ Unplug your computer from the wall outlet if you will not be using the computer for a long time.
- ❑ Before touching anything inside the computer, turn the system off and let it cool for ten minutes. This will ensure that the processor heat sink will not be hot.
- ❑ Do not attempt to open the power supply. There are no user-serviceable parts in the power supply. To avoid personal injury or damage to your equipment, refer the repair or replacement of the power supply to qualified personnel only.

Disposal of the lithium battery

Dispose of the lithium battery properly. In some areas, the disposal of lithium batteries in household or business trash may be prohibited. You can return your unwanted lithium batteries to your nearest Sony Service Center or Factory Service Center. For the Sony Service Center nearest you, call 1-888-4-SONY-PC (1-888-476-6972).



Do not handle damaged or leaking lithium batteries. The lithium battery may explode if mistreated. Do not disassemble it or dispose of it in fire.

Replace the battery with a Sony CR2032 lithium battery. Using a type of battery other than a CR2032 may present a risk of fire or explosion.

Handling the computer system

- Do not place your Sony computer in a location subject to:
 - Heat sources, such as radiators or air ducts
 - Direct sunlight
 - Excessive dust
 - Mechanical vibration or shock
 - Strong magnets or speakers that are not magnetically shielded
 - Ambient temperature of more than 95°F (35°C) or less than 50°F (10°C)
 - High humidity, moisture, or rain
- Do not place electronic equipment near your computer. The computer's electromagnetic field may cause a malfunction.
- Provide adequate air circulation to prevent internal heat build-up. Do not place your computer on loose surfaces (such as rugs or blankets) or near materials (such as curtains or draperies) that may block its ventilation slots. Leave a space of at least 8 inches from the back panel of your computer.
- Clean the cabinet with a soft, dry cloth or a soft cloth lightly moistened with a mild detergent solution. Do not use any type of abrasive pad, scouring powder, or solvent such as alcohol or benzene, as it may damage the finish of your Sony computer.

- ❑ Should any solid object or liquid fall into the cabinet, keyboard, or mouse, shut down your computer and then unplug it. You may want to have the computer checked by qualified personnel before operating it any further.
- ❑ The computer uses high-frequency radio signals and may cause interference to radio or TV reception. Should this occur, relocate the computer a suitable distance away from the set.
- ❑ Use only specified peripheral equipment and interface cables; otherwise, problems may result.
- ❑ Do not use cut or damaged connection cables.
- ❑ Always switch the power off before connecting your computer to peripheral equipment; otherwise, damage may occur to the integrated circuits in your computer.
- ❑ Your computer, keyboard, and mouse consist of high-precision electronic parts. Do not drop them or bump them against other objects.
- ❑ Your Sony computer will not work with party lines, cannot be connected to a coin-operated telephone, and may not work with multiple phone lines or a private branch exchange (PBX).
- ❑ If the telephone company makes a service call to your home or office and determines that your computer is responsible for the problem, the telephone company may bill you for the service call. If you do not disconnect your computer when it is adversely affecting the telephone line, the telephone company has the right to disconnect your service until you correct the problem.

Moisture condensation

If your computer is brought directly from a cold location to a warm one, moisture may condense inside your computer. In this case, allow at least an hour before turning on your computer. If any problem occurs, unplug your computer, and contact your Sony Service Center.

Upgrading the computer system

- ❑ The upgrading procedures described in the online manual, assume familiarity with the general terminology associated with personal computers and with the safety practices and regulatory compliance required for using and modifying electronic equipment.
- ❑ Disconnect the system from its power source and from telecommunications links, networks, or modems before you open the system or follow any of the upgrading procedures described in the online manual. Failure to do so may result in personal injury or equipment damage.
- ❑ Electrostatic discharge (ESD) can damage disk drives, add-on cards, and other components. Follow the upgrading procedures described in the online manual while working at an ESD workstation. If such a station is not available, use these precautions:
 - ❑ Avoid working in a carpeted area.
 - ❑ Do not handle materials that may produce or hold static electricity, such as cellophane wrappers.
 - ❑ Ground yourself by maintaining continuous contact with an unpainted metal portion of the chassis while performing the procedure.
- ❑ When removing a slot cover, be careful not to damage components on the system board or add-on cards. You may need to temporarily remove add-on cards that are next to the slot cover you want to remove.

Handling a display

- ❑ Do not change the display refresh rate to 85 Hz, as DVD playback and the DVgate software may not function correctly. Sony recommends that you keep your display at the preset, optimal refresh rate (75 Hz).
- ❑ Do not place the display near a strong magnetic force.
- ❑ Do not block the ventilation slots on the display.
- ❑ Using the computer in low temperature conditions may produce a residual image on the screen. This is not a malfunction. When the computer returns to normal temperature, the screen returns to normal.
- ❑ A residual image may appear on the screen if the same image is displayed for a lengthy period of time. The image disappears after a period of time. You can use a screen saver to prevent residual images.
- ❑ The screen becomes warm during operation. This is normal and does not indicate a malfunction.

Using the hard disk drive

- ❑ Do not place the computer in a location that is subject to vibration or shock.
- ❑ Do not move the computer during operation.
- ❑ Do not subject the computer to sudden changes in temperature.
- ❑ Do not turn off the power while the computer is accessing the hard disk drive.

Handling floppy disks

- ❑ Do not open the shutter manually and touch the surface of the floppy disk.
- ❑ Keep floppy disks away from magnets.
- ❑ Keep floppy disks away from direct sunlight and other heat sources.

Handling CD or DVD media

- ❑ Do not touch the surface of the disc.
- ❑ Do not drop or bend the disc.
- ❑ Do not use adhesive labels to identify the disc. The label may come off while the disc is in use in the optical drive and damage the drive.

Cleaning CD or DVD media

- ❑ Fingerprints and dust on the surface of a disc may cause read errors. Proper care of the disc is essential to maintain its reliability. Do not use solvents such as benzine, thinner, commercially available cleaners or anti-static spray, as they may cause damage to the disc.
- ❑ For normal cleaning, hold the disc by its edge and use a soft cloth to wipe the surface from the center out.
- ❑ If the disc is badly soiled, moisten a soft cloth with water, wring it out well, and use it to wipe the surface of the disc from the center out. Wipe off any remaining moisture with a dry soft cloth.

Resources

Sony provides several support options for your Sony computer. When you have questions about your computer and the preinstalled software, check these sources for answers, in the following sequence:

VAIO QuickStart	The <i>QuickStart</i> contains information on how to set up your computer quickly and easily.
VAIO Computer User Guide	The <i>User Guide</i> contains information on how to get the most from your computer, find help, and solve common problems. (Note: The User Guide is not available in hard copy for all models.)
Online (Electronic) Documentation	<p>The <i>User Guide</i> is available electronically on your hard drive. Two additional guides, <i>Upgrading and Maintaining Your VAIO Digital Studio Computer</i> and the <i>Troubleshooting Help</i> are also available online. To access online documentation:</p> <ol style="list-style-type: none">1 Click Start and point to VAIO Help and Support Center.2 Click on the VAIO User Guide.
Software application manuals and online help files	Most manuals for preinstalled software are located on your hard disk drive as online help files. You can access online help files from the Help menu within the specific application. A printed manual may be available for some applications.
Knowledge Database	This database provides instant access to information on commonly encountered problems. Enter a description of your problem and the Knowledge Database searches for the corresponding solutions online. You can access the Sony Knowledge Database from the Sony Computing Support Web site at http://www.sony.com/pcsupport .

Sony Fax-on-Demand	This service provides you with answers to commonly asked questions. You can use this automated service to request a list of available topics. Select the topics that you want to view. To contact the Sony fax-on-demand service, call 1-888-4-SONY-PC (1-888-476-6972). (Requires a fax machine or fax software.)
Software Updates	You can download the latest software updates and software patches for your Sony computer by selecting Software Updates on the Sony Computing Support Web site at http://www.sony.com/pcsupport .
VAIO Computer System Reference Manual	This advanced reference manual supplies detailed technical information about your computer's hardware. This document is available on the Sony Computing Support Web site at http://www.sony.com/pcsupport .

Index

A

Adobe Acrobat Reader 27
Adobe Photoshop Elements 27
Adobe Premiere LE 27
air circulation 52
America Online 28
audio problems 43

C

caution

- lithium battery 52
- speakers 52

CD

- playback problems 40, 42
- tray eject 40

CD-RW

- recording problems 42

computer

- adjusting voltage settings 51
- changing parallel port type 39
- condensation 53
- dispose of lithium battery 52
- hard disk drive 55
- proper handling 52
- registration 19
- removing side cover 51
- setting up 13
- shutting down 51
- startup problems 37
- system response problem 38

- turning off 25

- turning on 18

- upgrading 54

connecting

- cables 53
- keyboard 15
- modem cable 16
- monitor/display 13
- mouse 15
- peripheral equipment 53
- power cord 16, 51
- printers 48
- speakers 14

D

DigitalPrint 28

disconnecting power cords 51

Display 11

display 13

- refresh rate 54

DVD

- playback problems 40, 41

- region code warning 41

- tray eject 40

DVDit! for VAIO 28

DVD-RW

- recording problems 42

DVgate 28

E

Earthlink Network
 Total Access 29
electronic equipment 52
electrostatic discharge 54
Ergonomic considerations 11

G

Giga Pocket Personal
 Video Recorder 29

H

handling your computer 52
hard disk drive
 using 55
hardware
 cooling the heat sink 51

I

i.LINK
 interface 6
IEEE1394 6
interference 53
Internet
 connecting to 20

K

keyboard 6
 connecting 15
 troubleshooting 47

L

Lighting
 workspace planning 11
Limited warranty 19
lithium battery

 disposing 52
 losing power 51

M

magnetic shielding 52
Media Bar DVD Player 29
microphone
 background noise 45
 troubleshooting 45
Microsoft Internet Explorer 29
Microsoft Office XP
 Professional 30
Microsoft Office XP
 Small Business Edition 30
Microsoft Outlook Express 30
Microsoft Word 30
modem

 connecting cable 16
 slow connection 44
 troubleshooting 44

moisture condensation 53

monitor
 refresh rate 54

mouse
 connecting 15
 troubleshooting 46

MovieShaker 30

multiple telephone lines 53

O

Operating system locks up 39
optical drive
 recording speed 42
 trash eject 40

P

- parallel port
 - changing type 39
- party lines 53
- PBX 53
- PC-Cillin 2000 31
- PictureGear 31
- power
 - connecting power cord 16
 - cord 51
 - disconnecting power cord 51
 - fluctuations or loss 51
 - source 51
 - source, precautions 51
 - switch/button 25
- Power Saving Mode 23
- Power saving mode indicators 24
- precautions on power source 51
- preinstalled software 27
- printer
 - installing 48

Q

- Quicken 2002 31

R

- radio interference 53
- RealJukebox 31
- RealPlayer 32
- RecordNow DX 31
- recovering drivers 38
- Recovery CDs 10
- region codes 41
- registering your computer 19
- removing side cover 51

S

- safeguarding data 51
- setting up
 - computer 13
 - dial-up connection 20
 - electronic equipment 52
 - printers 48
- shutting down computer 25, 51
- slot cover 54
- Smart Capture 32
- Software
 - Adobe Acrobat Reader 27
 - Adobe Photoshop Elements 27
 - Adobe Premiere LE 27
 - America Online 28
 - audio problems 43
 - CD playback problems 42
 - DigitalPrint 28
 - driver recovery 38
 - DVDit! for VAIO 28
 - DVgate 28
 - EarthLink Network
 - Total Access 29
 - Giga Pocket Personal
 - Video Recorder 29
 - Media Bar DVD Player 29
 - Microsoft Internet Explorer 29
 - Microsoft Office XP
 - Professional 30
 - Microsoft Office XP Small Business Edition 30
 - Microsoft Outlook Express 30

- Microsoft Word 30
- MovieShaker 30
- PC-Cillin 2000 31
- PictureGear 31
- preinstalled 27
- Quicken 2002 31
- RealJukebox 31
- RealPlayer 32
- RecordNow DX 31
- recovering applications 37
- Smart Capture 32
- SonicStage 32
- Sony on Yahoo! 33
- stopped responding 38
- VisualFlow 33
- WordPerfect 33
- SonicStage 32
- Sony customer support 19
- Sony on Yahoo! 33
- speakers 14
 - caution 52
- starting your computer 18
- surge protectors 51
- system response problem 47

T

- telephone service 53
- Troubleshooting 38
 - CD playback problems 42
 - CD/DVD playback problems 40
 - CD-RW recording 42
 - changing parallel port type 39
 - computer stopped responding 38

- DVD playback problems 41
- DVD-RW recording 42
- keyboard 47
- microphone 45
- modem 44
- modem speed 44
- mouse 46
- operating system locks up 39
- optical drive tray eject 40
- printer installation 48
- recover applications 37
- software audio problems 43
- Sony customer support 19
- startup problems 37
- system response 47
- Topics 37
- turning off your computer 25, 51
- turning on your computer 18
- TV interference 53

U

- Uninterruptible Power Supply 51
- upgrading
 - your computer 54
- UPS 51

V

- VAIO Action Setup 33
- VAIO AV Applications 5
- VAIO Smart keyboard 6
- ventilation 11, 52
- Viewing angle
 - display 11
- viewing angle 11
- VisualFlow 33
- voltage settings 51

W

WordPerfect 33

workspace planning 11

Free Manuals Download Website

<http://myh66.com>

<http://usermanuals.us>

<http://www.somanuals.com>

<http://www.4manuals.cc>

<http://www.manual-lib.com>

<http://www.404manual.com>

<http://www.luxmanual.com>

<http://aubethermostatmanual.com>

Golf course search by state

<http://golfingnear.com>

Email search by domain

<http://emailbydomain.com>

Auto manuals search

<http://auto.somanuals.com>

TV manuals search

<http://tv.somanuals.com>