

# FM/AM Compact Disc Compact Player

## Operating Instructions

**About area code**  
The area code of the player you purchased is shown on upper left of the bar code label on the package. For accessories supplied with your player, check the area code of your model and refer to "Supplied accessories" toward the end of this manual.



D-F411  
D-F413  
D-F415

Sony Corporation ©1998 Printed in Malaysia

### Welcome!

Thank you for purchasing the Sony Compact Disc Compact Player. Before operating your player, please read this manual and retain it for future reference.

**About this manual**  
The instructions in this manual are for the D-F411, D-F413 and D-F415. Before you start reading, check your model number. The D-F415 is the model used for illustration purposes.

**Owner's Record**  
The model and the serial numbers are located at the bottom. Record these numbers in the spaces provided below. Refer to them whenever you call upon your Sony dealer regarding this product.

Model No. \_\_\_\_\_ Serial No. \_\_\_\_\_

### WARNING

**To prevent fire or shock hazard, do not expose the unit to rain or moisture.**

**To avoid electrical shock, do not open the cabinet. Refer servicing to qualified personnel only.**

**CAUTION**  
The use of optical instruments with this product will increase eye hazard.

### For the customers in the USA

This equipment has been tested and found to comply with the limits for a Class B digital device, pursuant to Part 15 of the FCC Rules. These limits are designed to provide reasonable protection against harmful interference in a residential installation. This equipment generates, uses, and can radiate radio frequency energy and, if not installed and used in accordance with the instructions, may cause harmful interference to radio communications. However, there is no guarantee that interference will not occur in a particular installation. If this equipment does cause harmful interference to radio or television reception, which can be determined by turning the equipment off and on, the user is encouraged to try to correct the interference by one or more of the following measures:

- Reorient or relocate the receiving antenna.
- Increase the separation between the equipment and receiver.
- Connect the equipment into an outlet on a circuit different from that to which the receiver is connected.
- Consult the dealer or an experienced radio/TV technician for help.

You are cautioned that any changes or modifications not expressly approved in this manual could void your authority to operate this equipment.

### For the customers in Australia

The supply cord of the AC power adaptor cannot be replaced; if the cord is damaged, the AC power adaptor should be discarded.

### For the customers not in Poland

The mark on the unit is valid only for products marketed in Poland.

### For the customers not in Europe

The CE mark on the unit is valid only for products marketed in the European Union.

### For the customers not in Russia

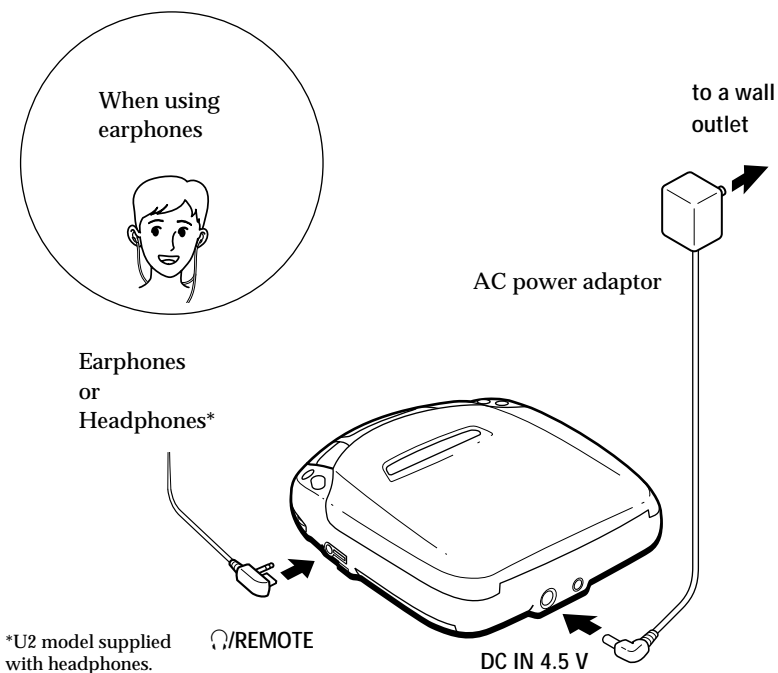
This mark on the unit and package is valid only for products marketed in Russia.

AR46

# Playing a CD right away!

If you want to play a CD right now, choose to use your player on house current. Other choices are the following three: rechargeable battery, dry batteries (see "Power Sources" on the reverse side) and car battery.

## 1 Connect

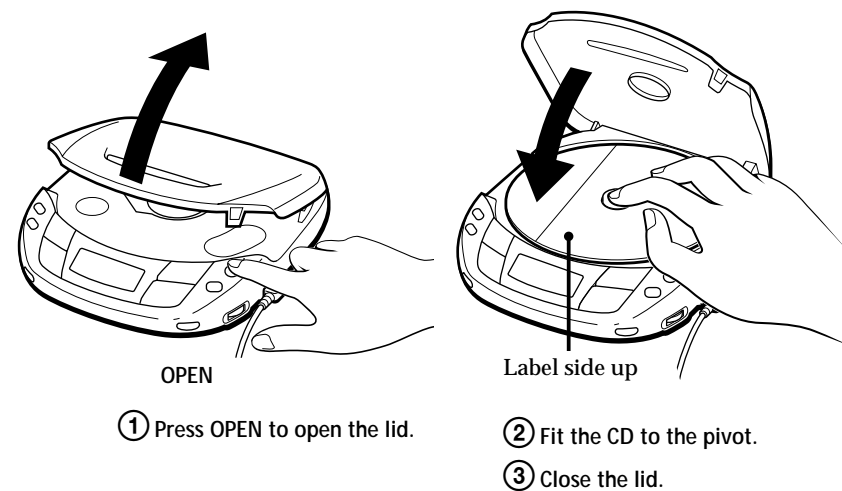


For models supplied with the AC plug adaptor  
If the AC power adaptor does not fit the wall outlet, use the AC plug adaptor.

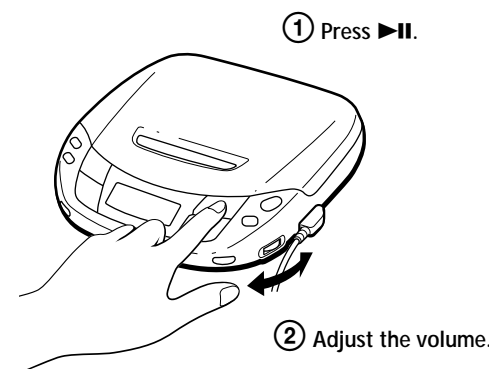
### For models supplied with the remote control

- Connect the plug of the earphones/headphones to the remote control, not to the REMOTE jack of the player.
- Connect the earphones/headphones to the remote control firmly. A loose connection may cause noise during playback.

## 2 Place a CD



## 3 Play

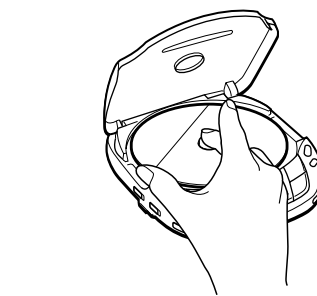


To stop play, press ■.

To	Press
Pause (main unit only)	▶▶
Resume play after pause (main unit only)	▶▶
Find the beginning of the current track (AMS*)	◀◀ once**
Find the beginning of previous tracks (AMS)	◀◀ repeatedly**
Find the beginning of the next track (AMS)	▶▶ once**
Find the beginning of succeeding tracks (AMS)	▶▶ repeatedly**
Go forward quickly	Hold down ▶▶**
Go backwards quickly	Hold down ◀◀**

\*AMS = Automatic Music Sensor  
\*\*These operations are possible during both play and pause.

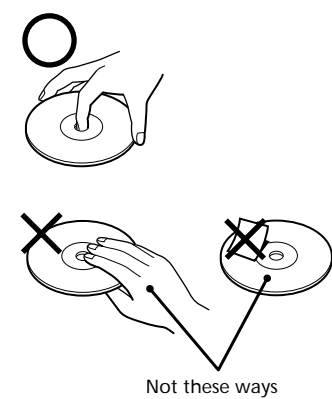
**To remove the CD**  
Remove the CD while pressing the pivot.



**Note on controlling the volume with the remote control (D-F415 only)**  
Set the VOL. (volume) control on the remote control to MAX. Then adjust the volume on the player to the level that you want to be the maximum volume of the remote control.

- Notes on display**
- When you press ▶▶ or ▶▶ (when RESUME is set to OFF), the total number of tracks in the CD and the total playing time appear for about 2 seconds.
  - During play, the track number and the elapsed playing time of the current track appear.
  - During pause, the elapsed playing time flashes in the display.
  - Between tracks, the time to the beginning of the next track will appear with the "--" indication.

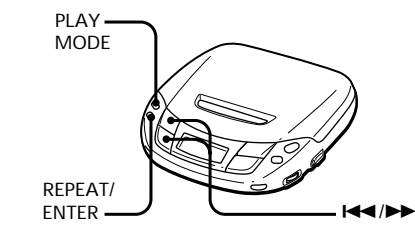
- Notes on handling CDs**
- To keep the CD clean, handle it by its edge. Do not touch the surface.
  - Do not stick paper or tape onto the CD.
  - Do not expose the CD to direct sunlight or heat sources such as hot air ducts. Do not leave the CD in a car parked under direct sunlight.



### ►Other Operations

#### Playing tracks repeatedly (Repeat Play)

You can play tracks repeatedly in normal, INTRO PGM, shuffle or RMS (Random Music Sensor) play modes. Repeat all the tracks or only one track.

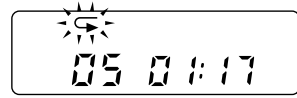


**To repeat all the tracks**  
Press REPEAT/ENTER during play. The "◀◀" indication appears.

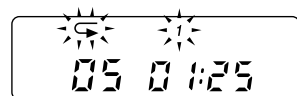


To cancel repeat play, press REPEAT/ENTER again.

**To repeat a single track**  
1 Press REPEAT/ENTER while the track you want to repeat is playing. The "◀◀" indication appears.



2 Press PLAY MODE repeatedly until "1" appears.

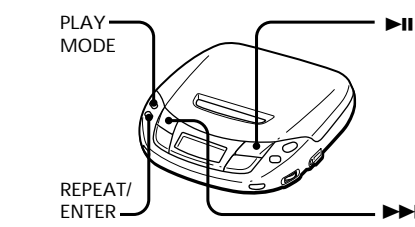


To repeat another track, press ◀◀ or ▶▶.

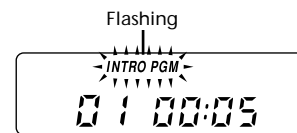
To cancel repeat play, press REPEAT/ENTER again.

#### Playing only the tracks you want (INTRO PGM Play)

You can choose and play your favorite tracks by scanning through the beginning of each track in a CD.



1 During play, press PLAY MODE repeatedly until "INTRO PGM" flashes.



2 Press ▶▶ to start scanning. The player plays about the first 15 seconds of each track and "INTRO PGM" flashes faster.

3 Press REPEAT/ENTER while the track you want is playing. To skip the track, press ▶▶ or just wait for the next track.

After you have gone through the CD, "INTRO PGM" stops flashing and the tracks you have chosen play automatically.

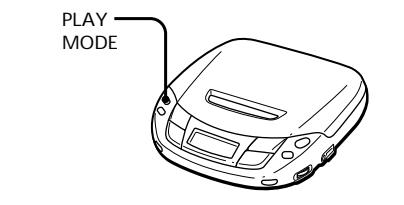
To finish programming before going through the whole CD, press ▶▶. The selected tracks will be played.

If you press ■, the program will be erased. To prevent accidental erasure, set the RESUME switch to ON.

To cancel INTRO PGM play, press PLAY MODE repeatedly until the play mode indication disappears from the display.

#### Playing tracks in random order (Shuffle Play)

You can play the tracks in a CD in random order.



During play, press PLAY MODE repeatedly until "SHUF" appears. The tracks play in random order.

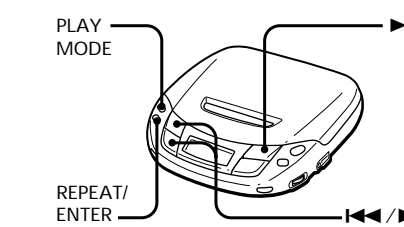


To cancel shuffle play, press PLAY MODE repeatedly until the play mode indication disappears from the display.

**Note**  
• During shuffle play, you cannot return to previous tracks by pressing ◀◀.

#### Playing tracks in the order you want (RMS Play)

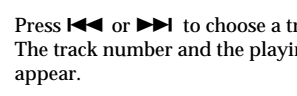
You can program up to 22 tracks to play in any order you choose.



1 During play, press PLAY MODE repeatedly until "RMS" flashes.



2 Press ◀◀ or ▶▶ to choose a track. The track number and the playing order appear.



3 Press REPEAT/ENTER to program the track.

4 Repeat steps 2 and 3 to program the remaining tracks.

5 Press ▶▶. "RMS" stops flashing and the tracks you have chosen play in the order you specified.

If you press ■, the program will be erased. To prevent accidental erasure, set the RESUME switch to ON.

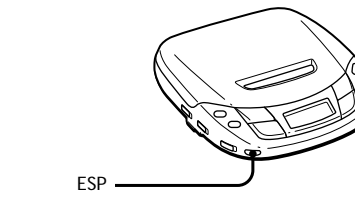
To cancel RMS play, press PLAY MODE until "RMS" disappears.

**To check the program**  
During programming:  
Press REPEAT/ENTER before step 5.  
During RMS play:  
Press PLAY MODE repeatedly until "RMS" flashes, then press REPEAT/ENTER. Each time you press REPEAT/ENTER, the track number and the playing order appear in the order you specified.

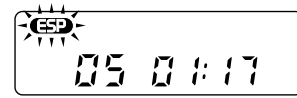
**Note**  
• If you program another track after the 22nd track, the first track programmed is cleared and the new track is programmed instead.

### Using other functions

**To minimize skipping (ESP\*)**  
The ESP (Electronic Shock Protection) function minimize skipping by using a buffer memory that stores music data and plays it back in the event of a shock. The new ESP\* (ESP Squared) system uses a new DSP (Digital Signal Processor) which can read and store music data more efficiently, providing a level of continuous skip protection not found in traditional buffer memory units. This decreases the frequency of sound skipping and the need to utilize the buffer memory. Use this function when listening in a car or while walking.  
\* Although ESP\* provides excellent protection against skipping, it will not prevent skipping while jogging or running.



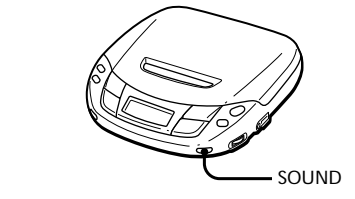
Press ESP. The ESP indication appears.



To release the ESP function, press ESP again.

- Notes**
- Playing may stop when the player gets a strong shock even with the ESP function on.
  - You may hear a noise or sound skip when:
    - listening to a dirty or scratched CD,
    - listening to an audio test CD or
    - the player receives continuous shock.
  - Sound may drop for a while if you press ESP during play.

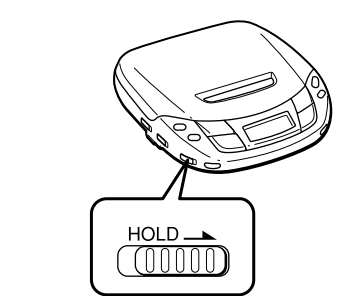
**To enjoy more powerful bass sound (Sound function)**  
You can enjoy a powerful bass-boosted sound.



Press SOUND to select "BASS" or "GROOVE." "GROOVE" is more effective.

**Note**  
• If the sound is distorted when emphasizing bass, turn down the volume.

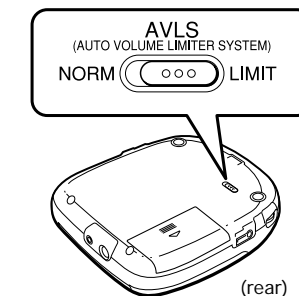
**To lock the buttons**  
You can lock your player against any accidental operations. You can still operate the player with the remote control.



Slide HOLD in the direction of the arrow. When you press any button, "Hold" appears in the display and you cannot operate the player.

To unlock, slide HOLD back.

**To protect your hearing (AVLS)**  
The AVLS (Automatic Volume Limiter System) function keeps down the maximum volume to protect your ears.

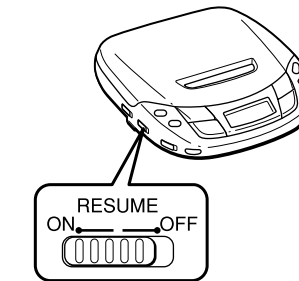


Set AVLS to LIMIT. The AVLS indication appears.



**Note**  
• If you use the SOUND function and the AVLS function at the same time, sound may be distorted. If this happens, turn down the volume.

**To resume playing from the point you stopped the CD (Resume Play)**  
Normally, every time you stop and play, playing starts from the beginning of the CD. The resume play function, however, lets you listen to from the point where you last turned off the player.



Set RESUME to ON.

To cancel resume play, set RESUME to OFF.

**Notes**

- Even if RESUME is set to ON, playing starts from the beginning when you open the lid.
- The resume point may be inaccurate by about 30 seconds.

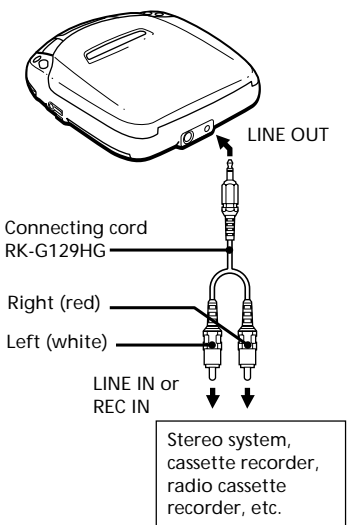
### To turn off the beep

You can turn off the beep that sounds as you operate your player.

Disconnect the power source (AC power adaptor, rechargeable battery or alkaline batteries). While you press and hold down ■, connect the power source again. To make the beep sound again, disconnect the power source, and then connect it without pressing ■.

### Connecting to other stereo equipment

You can listen to the CD through other stereo equipment or record a CD on a cassette tape. Refer to the instruction manual of the other equipment for details. Before making connections, turn off each piece of equipment.



- Notes**
- When you use a connecting cord, the SOUND function will be disabled.
  - Before you play the CD, turn down the volume of the connected equipment so as not to damage the connected speakers.
  - The beep sound is not output from the LINE OUT jack.
  - When you connect other equipment to the LINE OUT jack of this player, adjust the volume on the connected equipment.
  - When you record a CD on a cassette tape using a tape recorder that has the blank search function, release the ESP function. If the ESP function is on, the blank search function does not work.

Continue to the reverse side →





## Free Manuals Download Website

<http://myh66.com>

<http://usermanuals.us>

<http://www.somanuals.com>

<http://www.4manuals.cc>

<http://www.manual-lib.com>

<http://www.404manual.com>

<http://www.luxmanual.com>

<http://aubethermostatmanual.com>

Golf course search by state

<http://golfingnear.com>

Email search by domain

<http://emailbydomain.com>

Auto manuals search

<http://auto.somanuals.com>

TV manuals search

<http://tv.somanuals.com>