

Portable MiniDisc Player

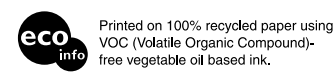
Operating Instructions



"WALKMAN" is a registered trademark of Sony Corporation to represent Headphone Stereo products. WALKMAN is a trademark of Sony Corporation.

MZ-E810SP

© 2003 Sony Corporation Printed in Japan



WARNING

To prevent fire or shock hazard, do not expose the unit to rain or moisture.

Do not install the appliance in a confined space, such as a bookcase or built-in cabinet.

To prevent fire, do not cover the ventilation of the apparatus with newspapers, table-cloths, curtains, etc. And don't place lighted candles on the apparatus.

To prevent fire or shock hazard, do not place objects filled with liquids, such as vases, on the apparatus.

Certain countries may regulate disposal of the battery used to power this product. Please consult with your local authority.

Caution
The use of optical instruments with this product will increase eye hazard.

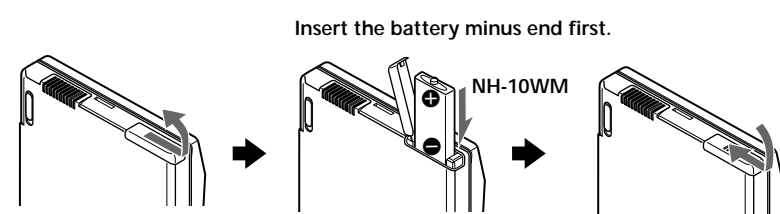
CAUTION — INVISIBLE LASER RADIATION WHEN OPEN
DO NOT STARE INTO BEAM OR VIEW DIRECTLY WITH OPTICAL INSTRUMENTS

Information
IN NO EVENT SHALL SELLER BE LIABLE FOR ANY DIRECT, INCIDENTAL OR CONSEQUENTIAL DAMAGES OF ANY NATURE, OR LOSSES OR EXPENSES RESULTING FROM ANY DEFECTIVE PRODUCT OR THE USE OF ANY PRODUCT.

Getting started

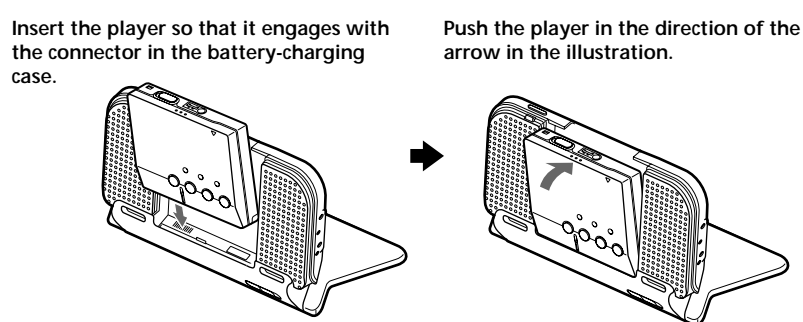
Charge the supplied rechargeable battery before using it for the first time.

1 Insert the rechargeable battery.

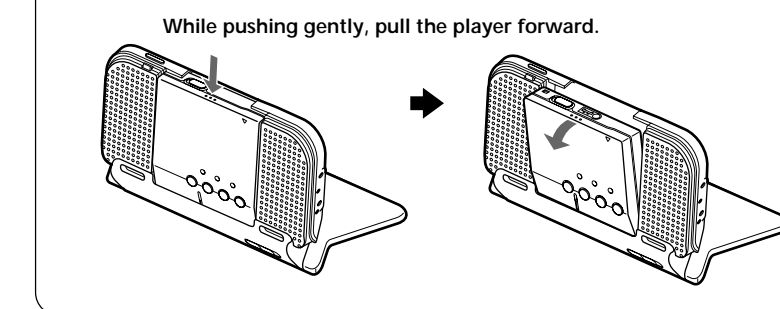


2 Attach the player to the battery-charging case with speakers.

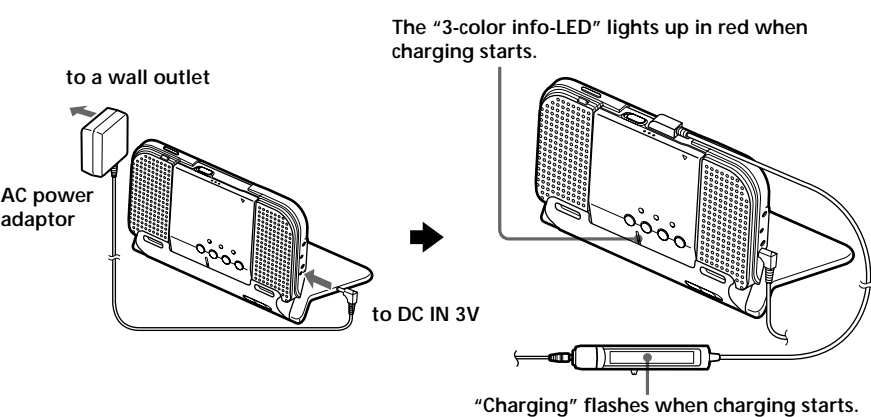
- While pressing OPEN on the battery-charging case, open the case.
- Insert the player as shown below.



Removing the player from the battery-charging case



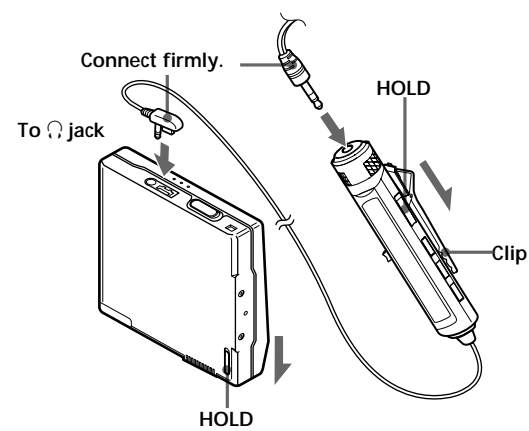
3 Charge the rechargeable battery.



The battery condition is indicated by the "3-color info-LED" on the player:
Red → Orange → LED off (approx. 2.5 hours later)
The player can be used when the LED has turned off.

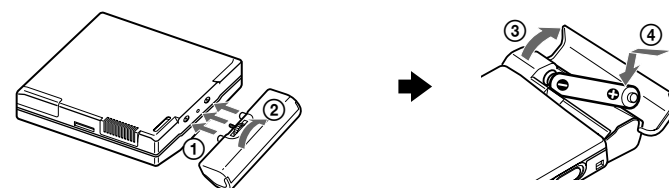
Note
If you start playback or do another operation during charging, the charging will stop.

4 Make connections and unlock the controls.



Using the dry battery

Attach the dry battery case to the player.

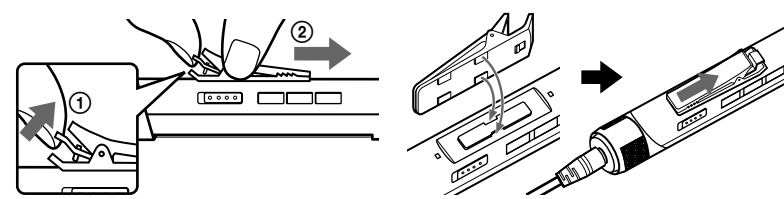


Insert a LR6 (size AA) alkaline dry battery. To operate the player for the longest possible time, use the dry battery together with a fully charged rechargeable battery.

Using the clip for the remote control

It may be hard for you to read the indications in the display if the remote control is attached upside down with the clip in its current position. In this case, attach the clip in the opposite direction as shown below.

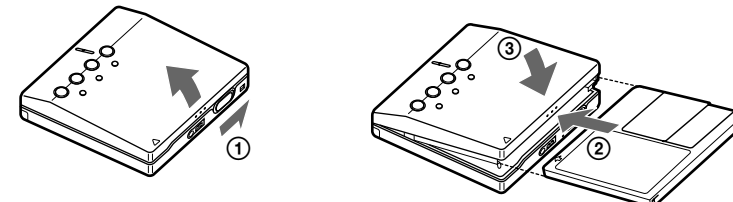
- Remove the clip.
- Attach the clip in the opposite direction.



Playing an MD

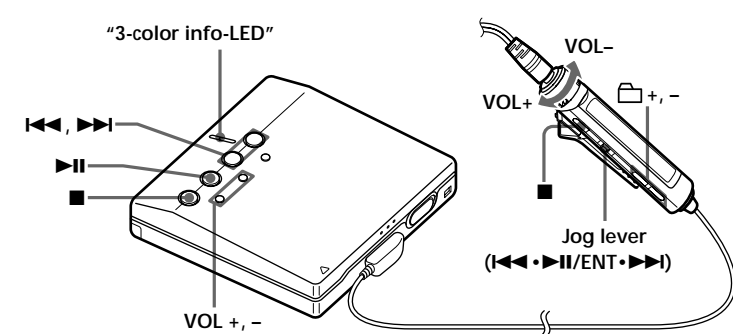
1 Insert an MD.

- Slide OPEN to open the lid.
- Insert an MD.
- Close the lid.



Insert an MD with the label side facing up, pushing the MD to the direction of the arrow in the illustration.

2 Play an MD.



- Press the jog lever (▶||) on the remote control. (Press ▶|| on the player.) A short beep sounds in the headphones/earphones. The LED lights up.
- Turn the volume control towards VOL + or - on the remote control to adjust the volume. (Press VOL + or - on the player.) The volume indicator appears in the display, allowing you to check the volume level.

To stop play, press ■.
A long beep sounds in the headphones/earphones. Playback starts from the point you last stopped playing. To start playback from the beginning of the disc, press and hold the jog lever (▶||) for 2 seconds or more on the remote control (Press and hold ▶|| for 2 seconds or more on the player).

To	Do this (Beeps in the headphones/earphones)
Pause	Press the jog lever (▶) on the remote control (continuous short beeps). (Press ▶ on the player.) Press the jog lever (▶ on the player) again to resume play.
Cue to the current track or the previous track	Slide the jog lever towards ◀◀ on the remote control (three short beeps). (Press ◀◀ on the player.)
Cue to the next track	Slide the jog lever towards ▶▶ on the remote control (two short beeps). (Press ▶▶ on the player.)
Go backwards or forward while playing	Slide and hold the jog lever towards ◀◀ or ▶▶ on the remote control. (Press and hold ◀◀ or ▶▶ on the player.)
Searching for a specific position while viewing a elapsed time (Time search)	While the player is paused, slide and hold the jog lever towards ◀◀ or ▶▶ on the remote control.
Searching for a specific track while viewing track numbers (Index search)	While the player is stopped, slide and hold the jog lever towards ◀◀ or ▶▶ on the remote control.
Cue to the beginning of every 10th track (only during playback of the disc with no group settings ¹⁾)	Press ⊞ or - button.
Remove the MD	Press ■, and then slide OPEN. ²⁾

¹⁾ For more details, see "Using the group function."
²⁾ Once you open the lid, the point to start play will change to the beginning of the first track.

About the "3-color info-LED"

The LED indicates the current operating mode, charging status, and battery condition. For details about the charging status, see "Getting started." For details about the battery condition, see "When to replace or recharge the battery" on the back page.

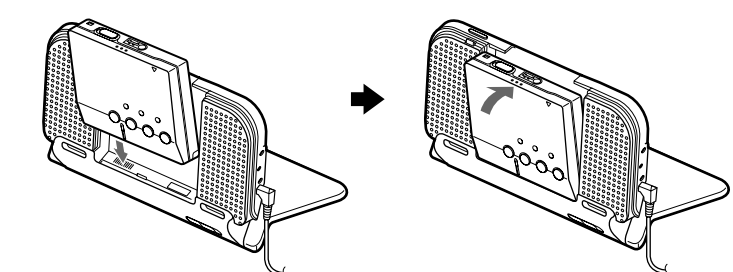
LED color	Operating status
Red	Playing a disc with no group settings
Green	Playing a disc with group settings
Orange	Cueing to another group (Group Skip)

Listening an MD with the supplied speakers

1 Attach the player to the battery-charging case with speakers.

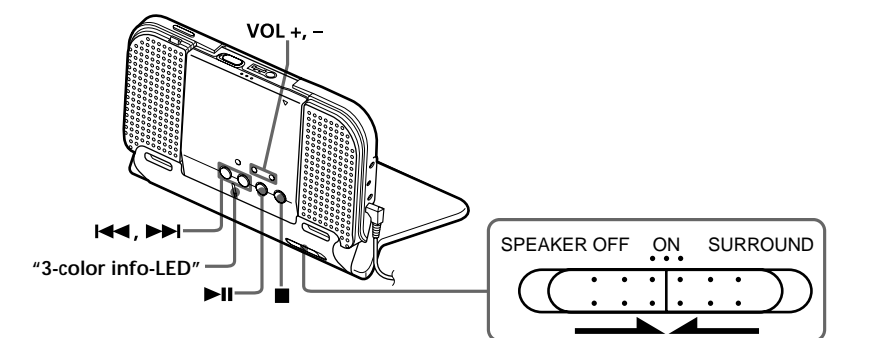
- While pressing OPEN on the battery-charging case, open the case.
- Insert the player as shown below.

Insert the player so that it engages with the connector in the battery-charging case. Push the player in the direction of the arrow in the illustration.



Charging starts when the rechargeable battery is inserted in the player. Charging is finished when the "3-color info-LED" turns off.

2 Play an MD.

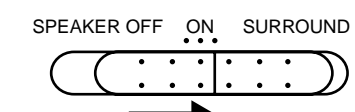


- Slide the SPEAKER switch to ON.
 - Press ▶||. The LED lights up.
 - Press VOL + or -.
- The volume indicator appears in the display, allowing you to check the volume level.

To stop play, press ■.
Playback starts from the point you last stopped playing. To start playback from the beginning of the disc, press and hold ▶|| for 2 seconds or more.

Note
The beep does not sound during output from the speakers.

Activating the surround effects
Slide the SPEAKER switch to SURROUND. It allows you to enjoy the surround effects.

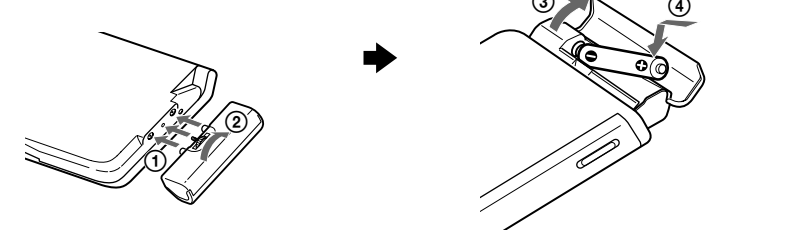


Notes
• Depending on the track being played when you activate the surround effects, you may hear some distortion in the sound. In this case, turn the volume down or slide the SPEAKER switch to ON.
• When you activate the surround effects, the volume level will be lower than it is when the SPEAKER switch is set to ON.

Using the dry battery

The player will operate for the longest time if you use a dry battery together with a fully charged rechargeable battery. To use a dry battery, attach the dry battery case to the battery-charging case as shown below.

Attach the dry battery case to the battery-charging case. Insert the battery minus end first.

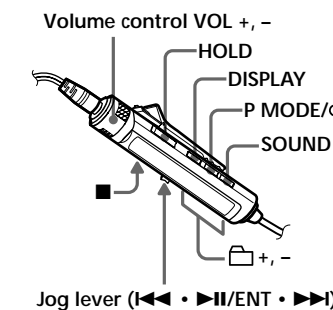


Insert a LR6 (size AA) alkaline dry battery.

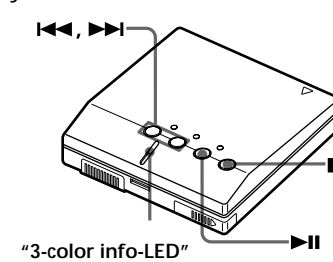
Note
Using the AC power adaptor allows you to output a more powerful sound than is possible using the battery. To enjoy higher volume sound, use the AC power adaptor.

▶ Various ways of playback

Remote control



Player

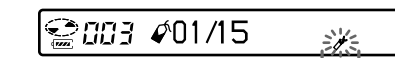


Listening to selected tracks only (Bookmark Play)

You can bookmark tracks on a disc and play them only. The sequence of bookmarked tracks cannot be changed.

To bookmark the tracks

- While playing the track you want to bookmark, press and hold the jog lever for 2 seconds or more.



Flashing slowly
The first track for bookmark play is set.

- Repeat step 1 to bookmark other tracks. You can bookmark with up to 15 tracks.

To play the bookmarked tracks

- During playback, press P MODE/C repeatedly until "TRPLAY?" appears in the display.
- Press the jog lever. The bookmarked tracks start playing, starting with the smallest track number.

To erase a bookmark

While playing the track for which you want to erase the bookmark, press and hold the jog lever for 2 seconds or more.

Note
If you open the lid, all bookmarks are canceled.

Listening to tracks in a desired sequence (Program Play)

- During playback, press P MODE/C repeatedly until "PGM" appears in the display.
- Slide the jog lever repeatedly to select a track, and then press the jog lever to enter that track.



- | track number | programmed number |
|-----------------------|---|
| 1 (single-track play) | A single track is played once. |
| 1 (bookmark play) | Bookmarked tracks play back in order of their track number. |
| SHUF (shuffle play) | All the tracks are played in random order. |
| PGM (program play) | The tracks are played in the order that you specified. |
- Repeat step 2 to program more tracks. You can program up to 15 tracks.
 - After programming the tracks, press and hold the jog lever for 2 seconds or more. The program is stored and playback starts from the first track.

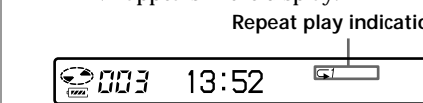
Note
The program play settings will remain in memory even after playback finishes or is stopped.

Note
All program settings are lost when the lid is opened.

Playing a track repeatedly (Repeat Play)

You can use the repeat function for normal play, single-track play, shuffle play, and program play mode.

- During playback in the selected play mode, press and hold P MODE/C for 2 seconds or more. "C" appears in the display.

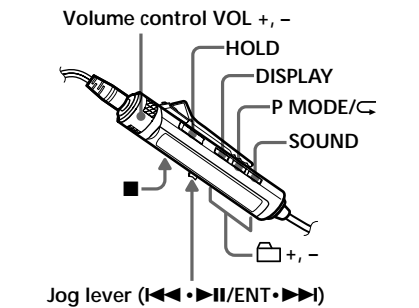


To cancel repeat play
Press and hold P MODE/C for 2 seconds or more.

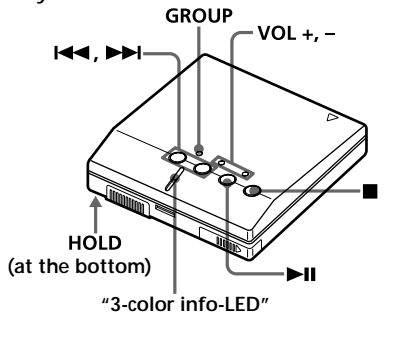
Note
By pressing the P MODE/C button during repeat play, you can change the play mode to be used with repeat play.

► Various ways of playback (continued)

Remote control



Player



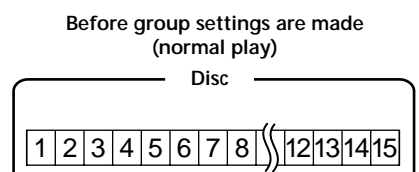
Using the group function

The group function is provided to allow playback of discs with group settings. The group function is convenient for playback of MDs on which several albums or CD singles have been recorded in MDLP (LP2/LP4) mode.

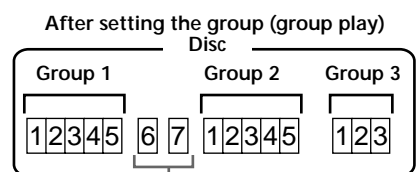
What is a disc with group settings?

The player can play back tracks in units of groups; that is tracks that have been recorded on a disc as part of separate groups, as shown below.

The "3-color info-LED" lights up in green when a disc with group settings is being played.



- Track 1 to 5 are assigned to group 1.
- Track 8 to 12 are assigned to group 2.
- Track 13 to 15 are assigned to group 3.
- Track 6 and 7 are not assigned to a group.



Tracks that were not assigned to a group are treated as being part of "Group -".

Note

The player does not support the recording of group settings. Use an MD recorder to set the group. For details, see "Registering groups using an MD recorder."

Playing a track in group play

In group play, all groups are played in order, starting with group 1, followed by the unassigned tracks ("Group -"). Playback stops after all the tracks have been played.

- During playback, press P MODE/REPEAT repeatedly until "G" appears in the display.

Cueing to the start of a group (Group Skip)

- During playback, press G + or -. Pressing the G button cues to the first track in the current group. Pressing the button again cues to the first track of the previous group. During group cueing, the "3-color info-LED" on the player flashes in orange.

On the remote control

- During playback, press G + or -. Pressing the G button cues to the first track in the current group. Pressing the button again cues to the first track of the previous group. During group cueing, the "3-color info-LED" on the player flashes in orange.
- Press ENT or ENT.

Selecting the play mode for group play (Group Play Mode)

The shuffle play and program play function can be used for group play mode.

- Press P MODE/REPEAT repeatedly. After normal playback, the following play modes are displayed:

Display	Play mode
	All tracks in the groups play back once (starting with the first track in group 1).
	Shuffle play starts with the group that is currently playing, and continues with the succeeding groups.
	The groups are played in (Group Program) the order that you specified.

Repeat play for the selected group play mode (Group Repeat Play)

- During playback in the selected group play mode, press and hold P MODE/REPEAT for 2 seconds or more. Playback repeats in the respective group mode.

Display	Play mode
	Repeat play of tracks within a group
	Repeat shuffle play of tracks within a group
	Repeat play for group program

Playing groups in a desired sequence (Group Program Play)

Do the procedure explained in "Listening to tracks in a desired sequence (Program Play)" to play back groups in a desired sequence. You can program up to 10 groups. The sequence of tracks within the groups cannot be changed.

Registering groups using an MD recorder

An MD recorder with the group function Refer to the operating instructions of the MD recorder.

An MD recorder that does not support the group function The procedure below allows you to assign tracks to a group using the disc name-editing function.

Specifying groups

- Change the disc name to the following by using the MD recorder:

[Disc name]//[First track of group 1];
[Last track of group 1];[Name of group 1]//
[First track of group 2] - [Last track of group 2];
[Name of group 2]//.....

- Disc name
- Track number
- Group name
- Separator between groups
- Hyphen placed between the first track and the last track
: Separator between track number and Group name

(Ex.) Set the following groups for the disc named "Collections":
Group name for tracks 1-7:
My Favorites*2003winter*

Group name for tracks 8-17:
Jun&Tac*sunshine head*

Group name for tracks 18-24:
THE NIGHT BUTTERFLYS

Group name for tracks 25-32:
Dream World/Kiss Me!

Text string entered
0:Collections//
1-7:My Favorites*2003winter*//
8-17:Jun&Tac*sunshine head*//
18-24:THE NIGHT BUTTERFLYS//
25-32:Dream World/Kiss Me!//

- The characters "-", "/", and "*" can be used in a group name.
- You can register the same group name more than twice on the same MD.
- You can specify a group without entering a group name (G) for it.

Notes

- Up to 99 groups can be registered on a single MD. The actual number, however, will be less than 99 if you have entered more characters than are allowed per disc.
- Depending on the specifications of your MD recorder, the group function may not work.

Adjusting the sound (Virtual-Surround • 6-Band Equalizer)

You can vary the virtual sound to create different acoustics, or modify the sound to suit your taste and store it for later use. The following two effects can be selected.

V-SUR (Virtual-Surround VPT Acoustic Engine)
Provides 4 kinds of virtual-surround conditions.

6-BAND EQUALIZER
Provides 6 different sound qualities.

Note

Virtual surround and 6-band equalizer effects will not be audible during speaker use.

Varying the virtual sound to create different acoustics (Virtual-Surround)

- During playback, press SOUND repeatedly to select "V-SUR."
- Press and hold SOUND for 2 seconds or more.
- Slide the jog lever repeatedly to select the surround mode.

A	B	
Track number	Track name	
STUDIO	V-SUR S	
LIVE	V-SUR L	
CLUB	V-SUR C	
ARENA	V-SUR A	

- Press the jog lever to enter the selected surround mode.

Selecting the sound quality (6-Band Equalizer)

- During playback, press SOUND repeatedly to select "SOUND."
- Press and hold SOUND for 2 seconds or more.
- Slide the jog lever repeatedly to select the SOUND mode.

A	B	
Track number	Track name	
HEAVY	SOUND H	
POPS	SOUND P	
JAZZ	SOUND J	
UNIQUE	SOUND U	
CUSTOM1	SOUND 1	
CUSTOM2	SOUND 2	

Each time you slide the jog lever, A and B change as follows:

A	B	
Track number	Track name	
HEAVY	SOUND H	
POPS	SOUND P	
JAZZ	SOUND J	
UNIQUE	SOUND U	
CUSTOM1	SOUND 1	
CUSTOM2	SOUND 2	

- Press the jog lever to enter the selected SOUND mode.

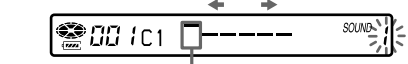
To cancel the procedure
Press and hold the DISPLAY button or the ■ button for 2 seconds or more.

To cancel the setting
Slide the jog lever repeatedly in step 1 above until the indication at G disappears.

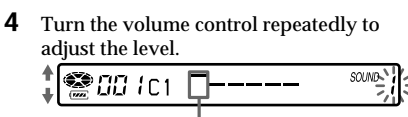
To modify and store the sound

You can customize the sound settings in "CUSTOM1" and "CUSTOM2."

- Do steps 1 to 3 above, and then slide the jog lever until "CUSTOM1" or "CUSTOM2" appears.
- Press the jog lever.
- Slide the jog lever repeatedly to select the frequency.



Frequency (100 Hz)
From the left, you can select 100 Hz, 250 Hz, 630 Hz, 1.6 kHz, 4 kHz, or 10 kHz.

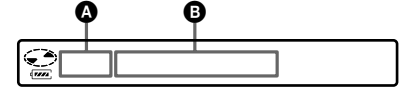


- You can select from among seven levels. -10 dB, -6 dB, -3 dB, 0 dB, +3 dB, +6 dB, +10 dB
- Repeat steps 3 and 4 to adjust the level for each frequency.
- Press the jog lever to enter the selection.

► Other operations

Viewing the track name and playing time in the display on the remote control

You can check the track or disc name, track number, the elapsed playing time of the current track, the number of the tracks recorded on the MD, the group name, and the total number of tracks in a group.



- Press DISPLAY on the remote control. Each time you press DISPLAY, the display changes as follows:

A	B
Track number	The elapsed time
Track number	Track name
The number of total tracks in the group	Group name
The number of total tracks	Disc name
Track number	Sound mode
Track number	SP/LP mode

Notes

- Depending on whether group play or normal play is selected, the operating conditions, and the disc settings, you may not be able to select certain indications or the indications may appear different.
- During playback, the SP/LP mode appears momentarily, and is then replaced by the elapsed time of the current track.

Suppressing the skips of the sound (G-PROTECTION)

The G-PROTECTION function was developed to provide a higher level of shock resistance than that of existing players in order to allow the player to be used while jogging.

Note

- The playback sound may skip if:
 - the player receives stronger continuous shock.
 - a dirty or scratched MiniDisc is played.

Starting playback quickly (Quick Mode)

After pressing the playback button or cueing to a track, you can start playback quickly. This procedure can be done by the remote control.

- Press and hold DISPLAY for 2 seconds or more.
- Slide the jog lever repeatedly until "PowerMode" appears in the display, and then press the jog lever.
- Slide the jog lever repeatedly until "QUICK" appears in the display, and then press the jog lever to enter the selection. "QUICK" appears in the display.
- Press the jog lever to enter the setting.

To cancel the procedure

Press and hold the DISPLAY button or the ■ button for 2 seconds or more.

To cancel the setting

Select "NORMAL" in step 3 above.

Notes

- When the power mode is set to "QUICK," the power remains on within the player even when nothing appears in the display. This leads to a shorter battery life. For this reason, it is recommended that you charge the battery daily.
- If no player operation (including opening or closing of the lid) occurs for 17 hours, the power in the player automatically turns off. For this reason, the next time you start playback or do another operation, the player will not respond quickly. The unit, however, will return to quick mode afterwards.

Protecting your hearing (AVLS)

AVLS (Automatic Volume Limiter System) function keeps down the maximum volume to protect your ears.

- During playback, press and hold DISPLAY for 2 seconds or more.
- Slide the jog lever repeatedly until "AVLS" appears in the display, and then press the jog lever.
- Slide the jog lever repeatedly until "AVLS ON" appears in the display, and then press the jog lever to enter the selection. "AVLS ON" appears in the display.

To set the AVLS function on the player
During playback, slide HOLD in the direction of →, and then while pressing VOL -, slide HOLD in the opposite direction.

To cancel the AVLS function

On the remote control, select "AVLS OFF" in step 3 above and press the jog lever. On the player, during playback, slide HOLD in the direction of →, and then while pressing VOL +, slide HOLD in the opposite direction.

Note

The AVLS setting cannot be made during playback.

Turning off the beep sound

You can set the beep so that it is not emitted when the player and the remote control are operated. This procedure can be done by the remote control.

- Press and hold DISPLAY for 2 seconds or more.
- Slide the jog lever repeatedly until "BEEP" appears in the display, and then press the jog lever.
- Slide the jog lever repeatedly until "BEEP OFF" appears in the display, and then press the jog lever to enter the selection.

To cancel the procedure
Press and hold the DISPLAY button or the ■ button for 2 seconds or more.

To cancel the setting

Select "BEEP ON" in step 3 above.

Note

The beep sound setting cannot be made during playback.

Turning on/off the backlight in the display on the remote control

You can set the backlight in the display on the remote control. This procedure can be done by the remote control.

- Press and hold DISPLAY for 2 seconds or more.
- Slide the jog lever repeatedly until "BACKLIGHT" appears in the display, and then press the jog lever.
- Slide the jog lever repeatedly until "QUICK" appears in the display, and then press the jog lever to enter the selection. "QUICK" appears in the display.
- Press the jog lever to enter the setting.

Locking the controls (HOLD)

- Slide HOLD on the remote control in the ← direction, and slide HOLD on the player in the → direction. Sliding HOLD on the remote control disables the controls on the remote control. Sliding HOLD on the player disables the controls on the player.

To unlock the controls

Slide HOLD to the opposite directions of the arrows.

Preserving battery power (Power Save Mode)

This function allows you to maximize the operating life of the battery. Power consumption is reduced by turning off the "3-color info-LED" at all times, or by turning off the display when no operation has been made for a while. This procedure can be done by the remote control.

- Press and hold DISPLAY for 2 seconds or more.
- Slide the jog lever repeatedly until "PowerMode" appears in the display, and then press the jog lever.
- Slide the jog lever repeatedly until "PowerSave" appears in the display, and then press the jog lever to enter the selection. The "3-color info-LED" turns off.

To cancel the procedure

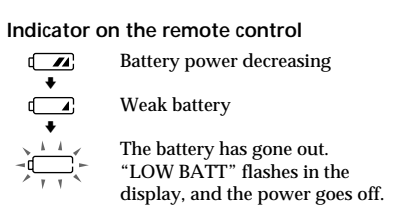
Press and hold the DISPLAY button or the ■ button for 2 seconds or more.

To turn on the "3-color info-LED"
Select "NORMAL" in step 3 above.

► Power sources

When to replace or recharge the battery

You can check the battery condition through the battery indicator on the remote control and the "3-color info-LED" on the player while using the player.



Indicator of the "3-color info-LED" on the player
The LED lights up. There is sufficient battery power.

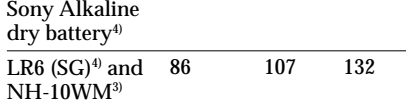
- The LED flashes slowly. Battery power decreasing
- The LED flashes quickly. The battery is low. The LED will soon turn off and the supply of power will stop.

Notes

- The battery indicator may show the battery to be fully charged even when it is not. Charging the battery shorter than the prescribed time will result in a shorter operating time on the player.
- A stronger or weaker battery charge may be indicated when you fast forward or fast reverse an MD, or when you use the player at a very cold place.

Battery life ^{*)}	When using the headphones/earphones (Unit: Approx. hours) (JEITA ²⁾)		
Batteries	SP Stereo (normal)	LP2 Stereo	LP4 Stereo
Ni-MH rechargeable battery NH-10WM [®]	28	33	43
LR6 (SG) Sony Alkaline dry battery ^{*)}	57	72	91
LR6 (SG) [®] and NH-10WM [®]	86	107	132

On the AC power adaptor (for the supplied battery-charging case)
For use in your house: Use the supplied AC power adaptor or the optional AC-E30A AC power adaptor. Do not use any other AC power adaptor since it may cause the player to malfunction.



Connect the AC power adaptor to an easily accessible AC outlet. Should you notice an abnormality in the AC power adaptor, disconnect it from the AC outlet immediately.

	When using the speakers (Unit: Approx. hours) (JEITA ²⁾)		
Batteries	SP Stereo (normal)	LP2 Stereo	LP4 Stereo
Ni-MH rechargeable battery NH-10WM [®]	12	13	14
LR6 (SG) Sony Alkaline dry battery ^{*)}	17	19	20
LR6 (SG) [®] and NH-10WM [®]	40	44	47

^{*)} Measured with the power save function on (see "Preserving battery power").

²⁾ Measured in accordance with the JEITA (Japan Electronics and Information Technology Industries Association) standard (using a Sony MDW-series Mini-disc).

^{*)} With a fully charged battery
⁶⁾ When using a Sony LR6 (SG) "STAMINA" alkaline dry battery (produced in Japan).

Note

The battery life may be shorter than that specified, depending on the temperature of the location, the operating conditions, and the type of battery being used.

Using house current

You can operate the player without a rechargeable battery or a dry battery. To do this, connect the battery-charging case with speakers to an AC outlet through the AC power adaptor, and then attach the player on the battery-charging case.

► Additional information

Precautions

On safety

- Make sure to keep the player in the supplied carrying pouch. If the terminals on the player, battery-charging case with speakers, or the dry battery case are accidentally brought into contact with a metallic object, they may short-circuit and begin to heat up.
- Keep the terminals on the player or on the dry battery case away from metallic objects or surfaces. Such contact may short-circuit the terminals and cause dangerous heat generation. When carrying the player with you, always keep the battery case attached to the supplied battery-charging case.
- When you carry the supplied rechargeable battery, be sure to put it in the supplied rechargeable battery carrying case. Carrying the rechargeable battery without the case may cause a short-circuit with metallic objects such as coins, key rings, or necklaces. As a result, heat may be generated.
- Do not put any foreign objects in the DC IN 3V jack.
- Do not carry or store the dry battery or battery case in the same place with metallic objects such as coins, key rings, or necklaces. This may cause a short-circuit and the generation of heat.
- Incorrect battery usage may cause the battery fluid to leak or battery to burst. To prevent such accidents, observe the following precautions:
 - Install battery with the + and - poles aligned correctly.
 - Do not charge dry battery.
 - If a battery leak should develop, carefully and thoroughly wipe away the battery fluid in the battery compartment before inserting a new battery.
 - If you will not use the player for a long time, be sure to disconnect the power supply (AC power adaptor, dry battery, rechargeable battery, or the battery-charging case). When disconnecting the AC power adaptor from the electrical outlet, grasp the adaptor plug itself; never pull the cord.

On the MiniDisc cartridge
Do not touch the internal disc directly. Forcing the shutter open may damage the internal disc.

- When transporting a minidisc, keep it in its case.
- Do not place the cartridge where it will be subjected to light, temperature, moisture or dust.
- Do not affix the label outside of the specified area on the MD. Make sure the label is placed within the recessed space on the disc.

On the headphones/earphones

Road safety

- Do not use headphones/earphones while driving, cycling, or operating any motorized vehicle. This may lead to a traffic accident and is illegal in many areas. It can also be potentially dangerous to play your player at high volumes while walking, especially at pedestrian crossings. You should exercise extreme caution or discontinue using the player in potentially hazardous situations.
- If you experience an allergic reaction to the supplied headphones/earphones, stop using them at once and consult a doctor or a Sony service center.

Preventing hearing damage
Avoid using headphones/earphones at high volumes. Hearing experts advise against continuous, loud and extended play. If you experience a ringing in your ears, reduce the volume or discontinue use.

Caring for others
Keep the volume at a moderate level. This will allow you to hear outside sounds and to be considerate of the people around you.

On the dry battery case
The supplied dry battery case is designed for use with the MZ-E810SP only.

On charging

- The supplied battery-charging case with speakers can be used only with the MZ-E810SP. It cannot be used to charge any other models.
- Do not use the supplied battery-charging case with speakers to charge any other battery besides the one designated for it.
- Charge the rechargeable battery at a temperature of +5°C (+41°F) to +40°C (+104°F). The charging time will vary according to the surrounding temperature.
- The battery-charging case and the battery may become hot during the charging procedure: this, however poses no danger.
- Because of the battery's characteristics, the capacity of the battery may be smaller than normal when it is used for the first time or after a long period of disuse. In this case, charge and discharge the battery several times. The normal battery life will be restored.
- If the capacity of the rechargeable battery drops to half the normal amount, replace it with a new one.
- As soon as the charging is complete, remove the player from the battery-charging case and disconnect the battery-charging case from the electrical outlet. Leaving it connected may result in reduced battery performance.

- Do not drop or bump the player. This may cause the player to malfunction.
- Do not pull on the remote control or headphones/earphones cords.
- Do not place the player in the following places:
 - An extremely hot place (over +60°C (+140°F))
 - A place exposed to direct sunlight or near a heater
 - In a car with the windows rolled up (especially in the summer)
 - In a damp place such as a bathroom
 - Near a source of electromagnetic fields such as a magnet, speaker, or TV
 - In a dusty place

On heat build-up
Heat may build up in the player when it is charging or operated for a long time. This, however, is not a malfunction.

- On mechanical noise**
The player emits mechanical noise while operating, which is caused by the power-saving system of the player. This is not a malfunction.

On installation
Never use the player where it will be subjected to extremes of light, temperature, moisture or vibration.

- Never wrap the player in anything when it is being used with the AC power adaptor. Heat build-up in the player may cause malfunction or injury.

On the remote control
The supplied remote control is designed for use with the MZ-E810SP only. Note also that the player cannot be controlled by remote controls for other models.

On the MiniDisc cartridge
Do not touch the internal disc directly. Forcing the shutter open may damage the internal disc.

- When transporting a minidisc, keep it in its case.
- Do not place the cartridge where it will be subjected to light, temperature, moisture or dust.
- Do not affix the label outside of the specified area on the MD. Make sure the label is placed within the recessed space on the disc.

On the headphones/earphones
Do not use headphones/earphones while driving, cycling, or operating any motorized vehicle. This may lead to a traffic accident and is illegal in many areas. It can also be potentially dangerous to play your player at high volumes while walking, especially at pedestrian crossings. You should exercise extreme caution or discontinue using the player in potentially hazardous situations.

On the AC power adaptor (for the supplied battery-charging case)
For use in your house: Use the supplied AC power adaptor or the optional AC-E30A AC power adaptor. Do not use any other AC power adaptor since it may cause the player to malfunction.

Preventing hearing damage
Avoid using headphones/earphones at high volumes. Hearing experts advise against continuous, loud and extended play. If you experience a ringing in your ears, reduce the volume or discontinue use.

Caring for others
Keep the volume at a moderate level. This will allow you to hear outside sounds and to be considerate of the people around you.

On the dry battery case
The supplied dry battery case is designed for use with the MZ-E810SP only.

On

Free Manuals Download Website

<http://myh66.com>

<http://usermanuals.us>

<http://www.somanuals.com>

<http://www.4manuals.cc>

<http://www.manual-lib.com>

<http://www.404manual.com>

<http://www.luxmanual.com>

<http://aubethermostatmanual.com>

Golf course search by state

<http://golfingnear.com>

Email search by domain

<http://emailbydomain.com>

Auto manuals search

<http://auto.somanuals.com>

TV manuals search

<http://tv.somanuals.com>