

PCWA-C700 What to do if... Troubleshooting Guide

This document provides information related to some common problems and questions encountered by users of this product. Refer to this guide before contacting Sony Customer Information Services.

Sony Corporation © 2003 Printed in Japan

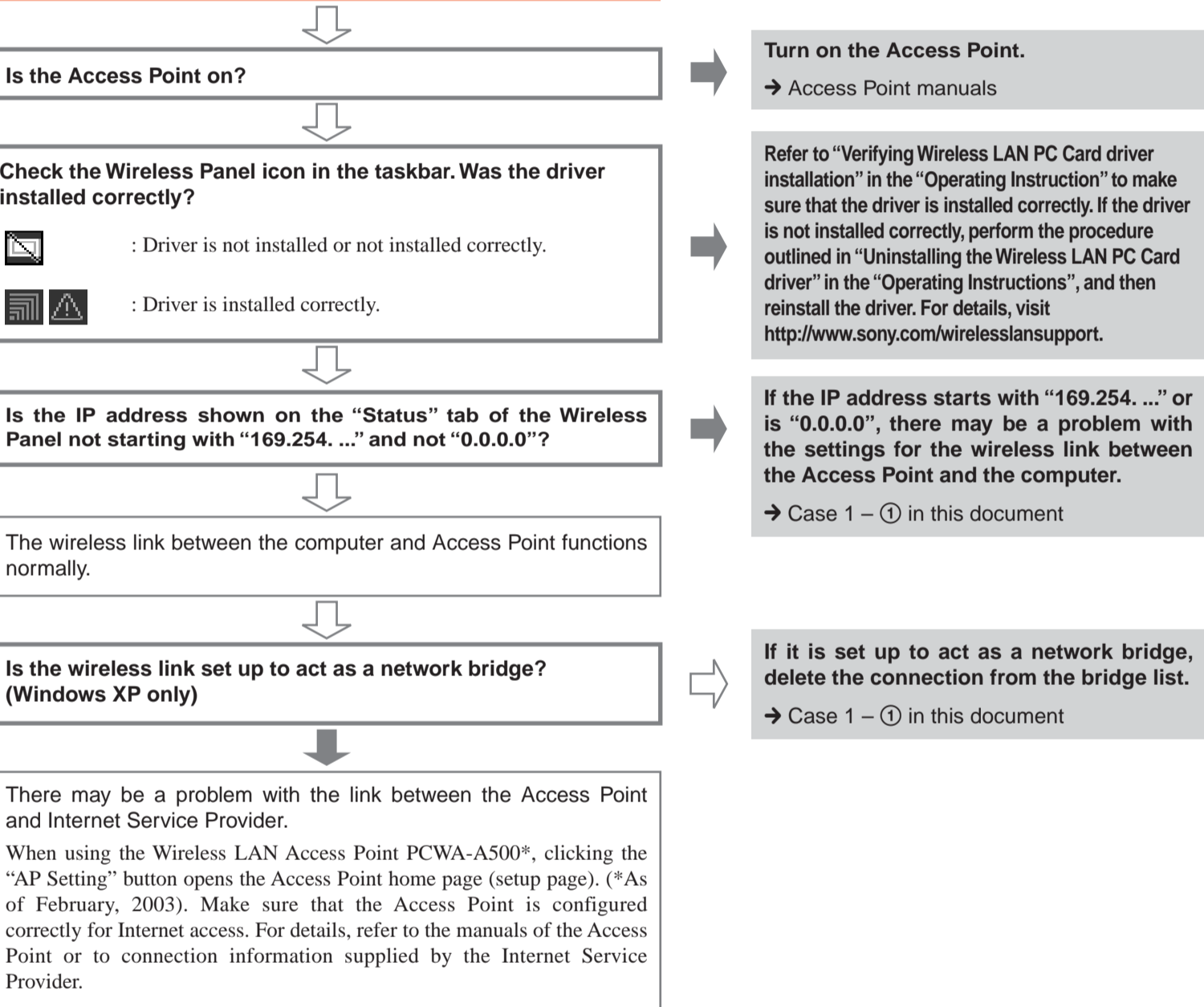
How to resolve problems

Introduction

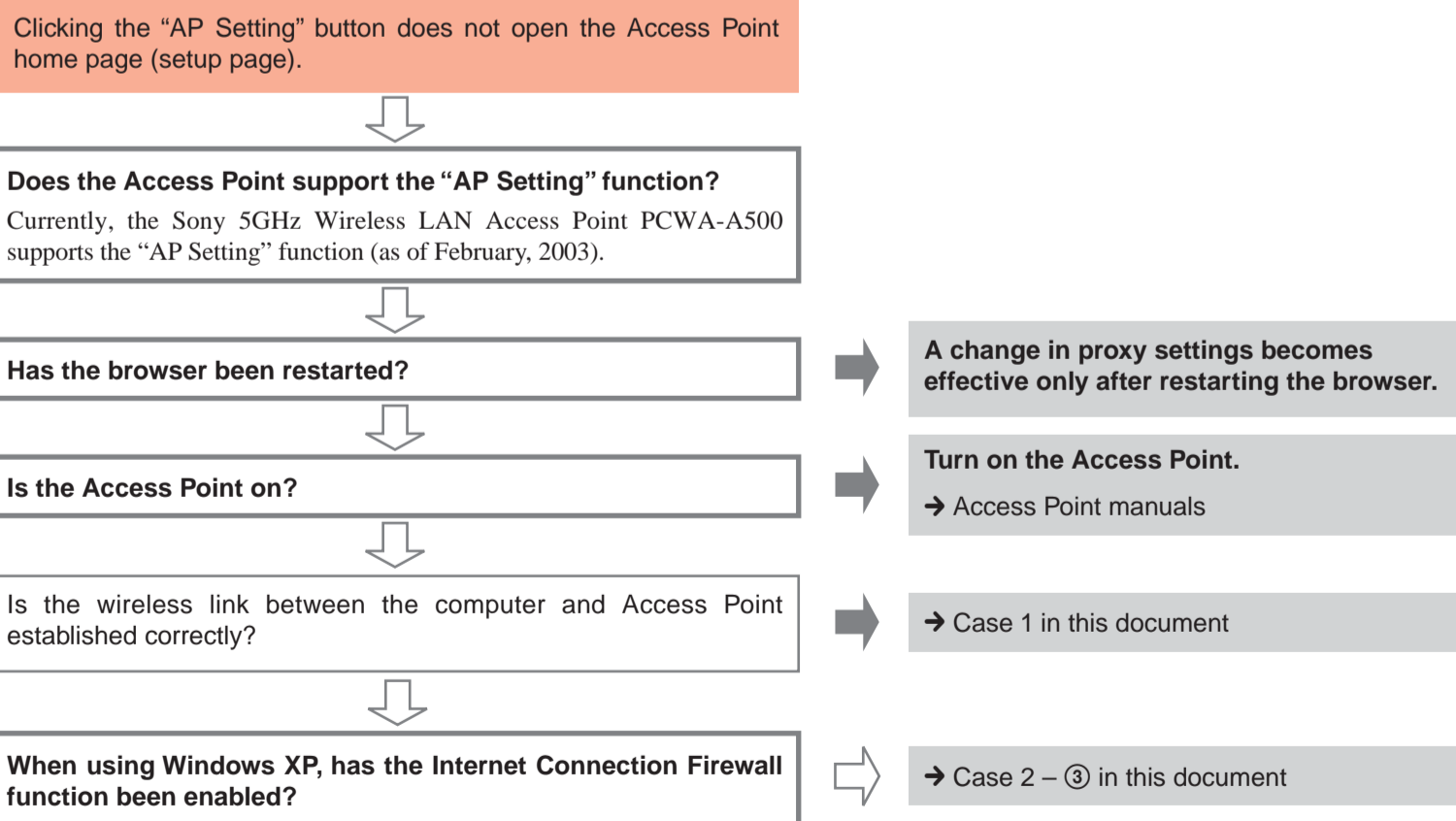
Make sure that the supplied Wireless Panel software is installed. When using Windows XP, wireless connection settings are made using the built-in functions of Windows XP, but the Wireless Panel software is still useful because it allows monitoring of network status and lets you selectively turn 802.11b (2.4 GHz) and 802.11a (5 GHz) transmission on/off.

If a problem occurs, answer the following questions in sequence to find a solution.

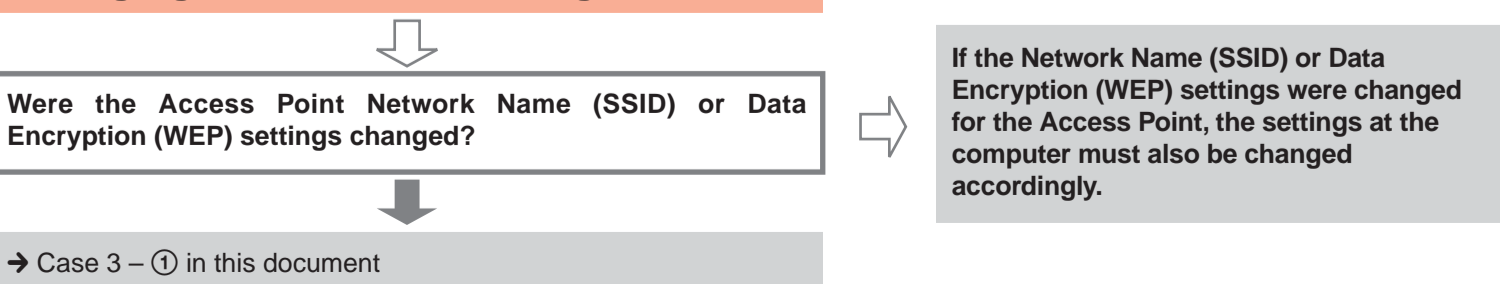
Cannot connect to the Internet



Cannot open the Access Point home page (setup page)



Cannot connect to the Internet after changing Access Point settings



The connection between the computer and Access Point or the link between the Access Point and Internet Service Provider (ISP) may not be established.

① Check wireless link between computer and Access Point.

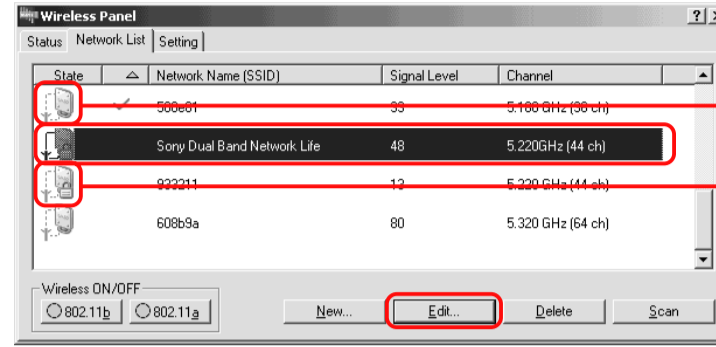
Under the "Status" tab in Wireless Panel, is the Network Name shown as "Not Connected" ?

Hints

- If the connection was established with a wrong encryption key (WEP key), the icon in the system tray may still indicate "Connected". (If connection to an Access Point for which encryption is enabled was attempted with encryption set to Off, or vice versa, the connection will not be completed and the "Not Connected" icon will be shown in the system tray.)
- If the IP address shown in Wireless Panel under the "Status" tab starts with "169.254. ..." or is "0.0.0.0", there may be a mismatch in the data encryption settings. Correct the settings as described below. If the IP address does not start with "169.254. ..." and is not "0.0.0.0", communication between the computer and the Access Point is normal. Consult the section "③ Check wireless link between Access Point and Internet Service Provider (ISP)".

- Check the data encryption (WEP) setting at the Access Point to which you want to connect.
- Click the "Network List" tab in the Wireless Panel.
- Modify the settings for the network shown as "Not Connected", and reconnect.
 - Windows Me, Windows 2000

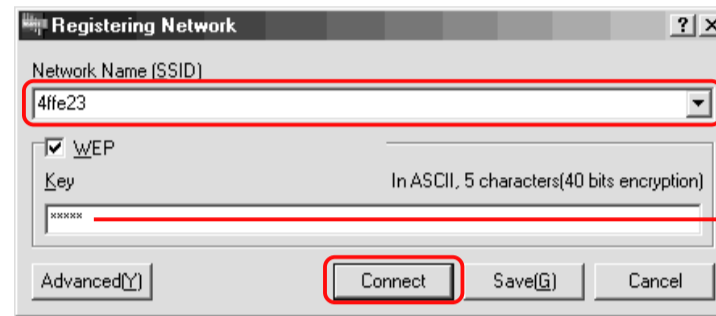
① Select the wireless network to which you want to connect, and click "Edit".



Icon with key indicates network for which data encryption is enabled.
Icon without key indicates network for which data encryption is not enabled.

The "Registering Network" dialog box appears.

② Change the settings according to the settings at the Access Point, and click "Connect".



Encryption key (WEP key)

Hint

You can display the "Registering Network" dialog box by selecting "Dialog Format" on the "Setting" tab. If you select "Wizard Format", follow the instructions of the wizard to change settings.

The computer connects to the Access Point with the new settings.

Windows XP

Under Windows XP, the setting is made in the "Connect to Wireless Network" dialog box. For details, refer to the "Operating Instructions".

- Click the "Status" tab in the Wireless Panel and verify that the IP address does not start with "169.254. ..." and is not "0.0.0.0". The connection between computer and Access Point should now be normal.

Hint

Access Point settings can be changed from the computer only after the connection between computer and Access Point has been established properly. If unable to connect to the Internet, perform the above steps first, to ensure that communication between computer and Access Point functions normally.

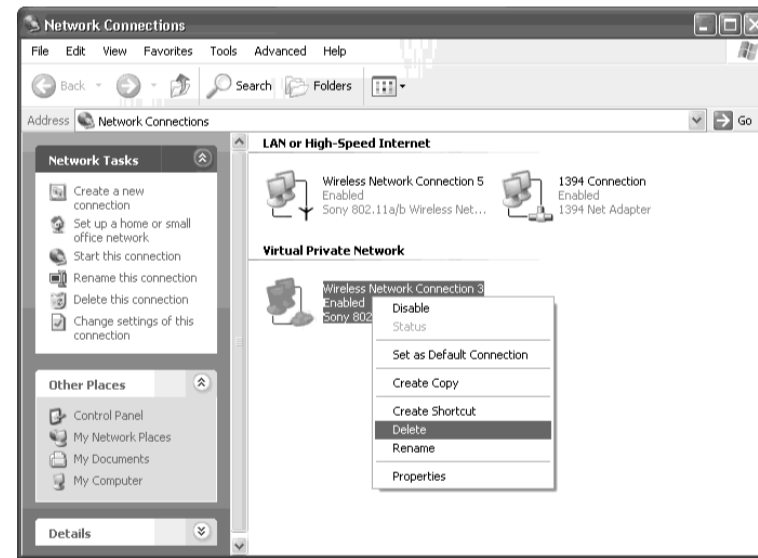
■ Network Name indication does not show "Not Connected", but IP address starts with "169.254. ..." or is "0.0.0.0"?

There may be a mismatch in the data encryption settings. If connection to an Access Point for which data encryption is enabled was attempted with a wrong encryption key (WEP key), the Network Name will be shown under the "Status" tab of the Wireless Panel, but the actual connection is not established, because no IP address could be obtained (the IP address is shown as "169.254. ..." or "0.0.0.0"). Enter the correct encryption key (WEP key) as described in ① above, and reconnect.

② Is wireless link set up to act as network bridge? (Windows XP only)

Check this as follows.

- Click "Start", point to "Connect To", and click "Show all connections".
- Confirm that the wireless network connection in question is not acting as a network bridge.
- If the wireless network connection is configured as a network bridge, right-click the corresponding icon, and click "Delete".



③ Check wireless link between Access Point and Internet Service Provider (ISP).

Refer to connection information provided by your ISP to configure the Access Point. For details, contact technical support of the ISP. Sony does not provide any support regarding this issue.

Case 2 Cannot open the Access Point home page (setup page)

① The "AP Setting" button under the "Status" tab of the Wireless Panel can only be used in conjunction with the Access Point PCWA-A500 (as of February, 2003).

② Even when using the Access Point PCWA-A500, clicking the "AP Setting" button results in the message "There was no response from the access point. Possible reasons include: the access point is located too far away, the access point may not be configured to respond, the access point may be turned off." In such a case, communication may be instable.

Check whether the distance between computer and Access Point is not excessive, and whether there are any obstacles that may impair signal transmission. Ensure that the computer and Access Point can communicate and then click the "AP Setting" button again.

③ When using Windows XP, opening the Access Point home page (setup page) may not be possible if the Internet Connection Firewall function has been enabled.

Use the following procedure to check the firewall setting.

- Click "Start", point to "Connect To", and click "Show all connections".
- Right-click the Wireless Network Connection icon to which you want to connect, and click "Properties".
- Click the "Advanced" tab and (if selected) deselect the "Protect my computer and network by limiting or preventing access to this computer from the Internet" check box.
- Click "OK".

Hint

Refer to Windows XP Online Help for details about the Internet Connection Firewall.

Note

Take appropriate precautions to ensure security when the "Internet Connection Firewall" function is disabled. Except when configuring the Wireless LAN Access Point, it is strongly recommended that you enable the Internet Connection Firewall function at all times.

Microsoft and Windows are registered trademarks of Microsoft Corporation in the United States of America and other countries.

- In this manual, Microsoft® Windows® Millennium Edition is referred to as Windows Me.
- In this manual, Microsoft® Windows® 2000 Professional is referred to as Windows 2000.
- In this manual, Microsoft® Windows® XP Professional and Microsoft® Windows® XP Home Edition are referred to as Windows XP.

Case 3 Cannot connect to the Internet after changing Access Point settings

If you have changed the Data Encryption (WEP) setting of the Access Point according to its documentation, you must change the wireless connection settings at the computer accordingly, using the same values as for the Access Point. If Internet access was working and has become unavailable after changing the encryption settings, perform the following steps to match the settings of the computer and Access Point.

① Access Point encryption settings were changed, but settings for link between Access Point and computer were not modified

Follow the instructions for "Case 1 - ① Check wireless link between computer and Access Point" and modify settings of computer to match Access Point settings.

② Access Point encryption settings were changed, and settings for link between Access Point and computer were also modified

Has encryption key (WEP key) been input correctly?

Temporarily return Access Point settings to factory defaults as described below, and then reconfigure Access Point.

1 Follow instructions in Access Point documentation to reset Access Point to factory defaults.

2 Establish wireless link between Access Point and computer.

If communication between Access Point and computer is normal at this stage, the Access Point can be configured.

3 Configure Access Point for access to Internet via Internet Service Provider (ISP).

If required, change Network Name (SSID) of Access Point. For security reasons, Data Encryption (WEP) for Access Point should be enabled.

Hint

Make a note of the encryption key so as not to forget it.

4 If Network Name (SSID) or Data Encryption (WEP) settings for Access Point were changed in Step 3, configure the computer with the same settings, according to "Case 1 - ① Check wireless link between computer and Access Point".

Hint

When you change the Access Point settings, communication between Access Point and computer will be interrupted. If you have changed settings at the Access Point, be sure to reconfigure the computer with the same settings.

Case 4 The driver and supplied utility software were installed, and the Easy Setup Wizard* has started, but the message "It appears that the driver is not installed properly." appears

* Under Windows XP, the Easy Setup Wizard does not start automatically.

① Make sure that the computer is running Windows Me, Windows 2000, Windows XP Home Edition, or Windows XP Professional.

This product does not support Windows 95, Windows 98, and Windows NT 4.0.

② Has the driver been installed correctly?

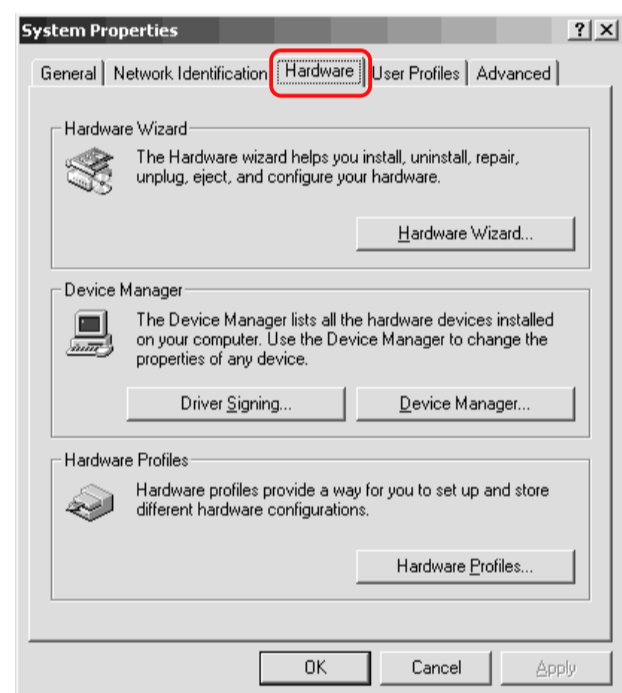
To verify that the Wireless LAN PC Card driver has been installed properly, perform the following steps.

1 Right-click "My Computer" on the Desktop, and select "Properties" from the menu. The "System Properties" dialog box appears.

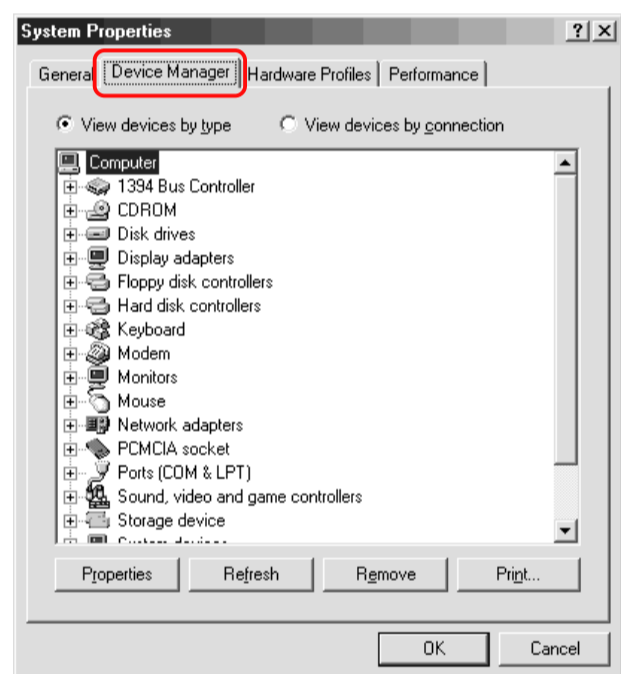
2 Click the "Hardware" tab, then click "Device Manager".

Under Windows Me, click the "Device Manager" tab.

Windows 2000

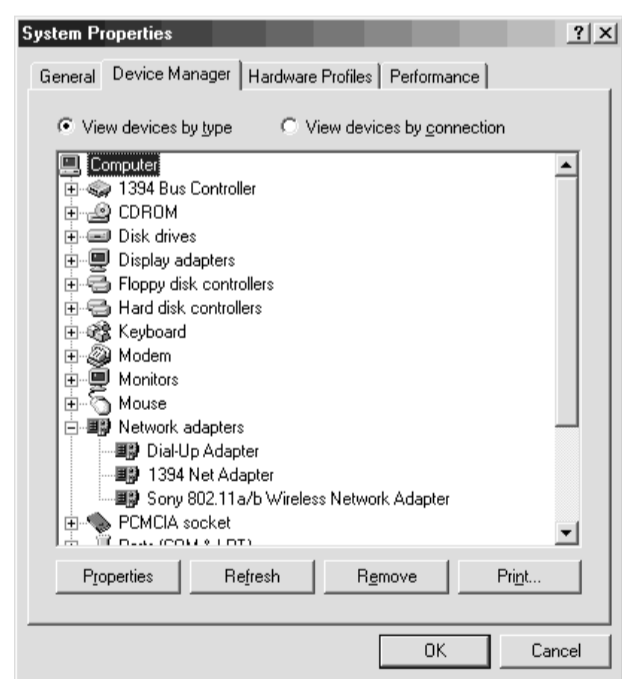


Windows Me



3 Click "Network adapters" and check "Sony 802.11a/b Wireless Network Adapter".

If an "X" or "?" symbol is shown before "Sony 802.11a/b Wireless Network Adapter", the driver was not correctly installed. Proceed to step 4. If no symbol is shown, the driver was correctly installed.



4 Right-click "Sony 802.11a/b Wireless Network Adapter" and select "Remove" from the menu.

5 Refer to "Verifying Wireless LAN PC Card driver installation" in the "Operating Instruction" to make sure that the driver is installed correctly. If the driver is not installed correctly, perform the procedure outlined in "Uninstalling the Wireless LAN PC Card driver" in the "Operating Instructions", and then reinstall the driver. For details, visit <http://www.sony.com/wirelesslansupport>.

Case 5 In the Easy Setup Wizard, the encryption key (WEP key) was input, but the "Next" button remains grayed and cannot be clicked

Was the encryption key input correctly as a string of the exact length?

If the string input as encryption key (WEP key) is too long or too short, or if it contains an illegal character, the "Next" button does not become available. Enter a string of the exact length, as indicated below.

	ASCII	Hex
40bit	5 characters (alphanumeric and symbols)	10 digits (0 - 9, A - Z, a - z)
104bit	13 characters (alphanumeric and symbols)	26 digits (0 - 9, A - Z, a - z)

Case 6 Cannot switch networks

When using Windows 2000 or Windows Me

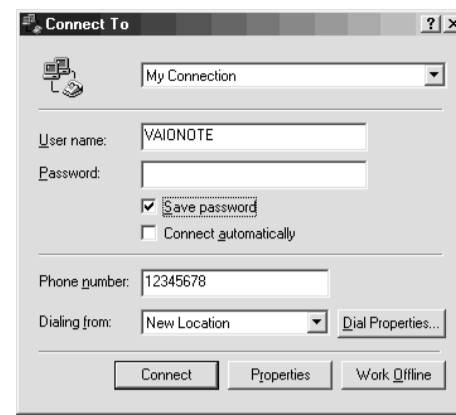
If logged on to Windows as a user with limited privileges, the network cannot be switched. Log on as a user with administrator privileges.

When using Windows XP

If "Streaming Mode" was set to On, the wireless setting functions of Windows XP are not available. Set "Streaming Mode" to Off after viewing streaming video data.

Case 7 Clicking the "AP Setting" button opens the dial-up dialog box, and Access Point setup is not possible

The wireless link between computer and Access Point is normal and the IP address does not start with "169.254. ..." or is "0.0.0.0", but clicking the "AP Setting" button brings up the following dialog box.



1 Click "Connect".

The "Internet Properties" dialog box appears.

2 Check "Never dial a connection", click "Apply", and then click "OK".

3 In the "Dial-up Connection" dialog box, click "Cancel".

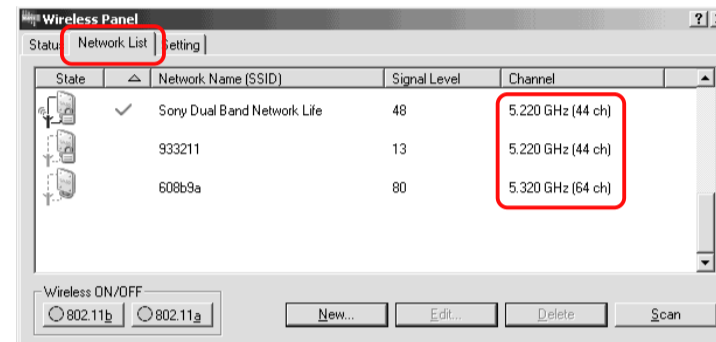
The browser starts up automatically.

4 Click the "AP Setting" button.

Case 8 Playback of MPEG2 streaming contents (4 Mbps, 8 Mbps) is jerky and there are dropped frames

When using 802.11b wireless LAN

Because the actual throughput in a 802.11b wireless LAN is about 4 Mbps, MPEG2 streaming data cannot be played. Use a 802.11a wireless LAN.



802.11a wireless LAN is used, but there are still dropped frames

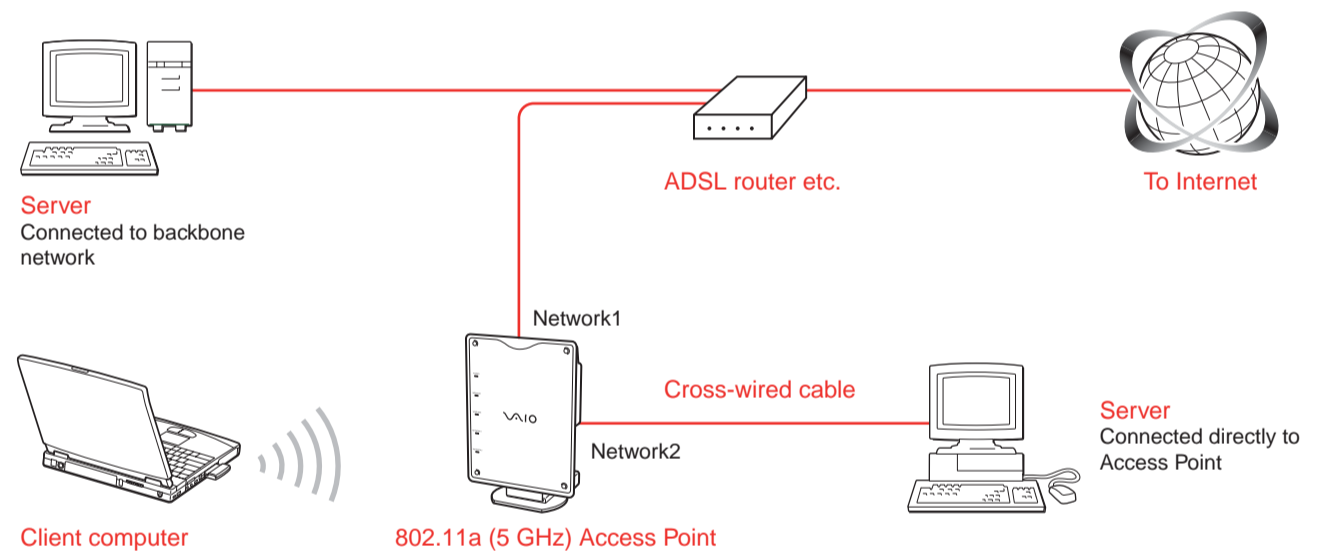
Check the following points.

① Are multiple computers using a single Access Point simultaneously for streaming data playback?

The actual throughput in a 802.11a wireless LAN is on the order of 17 - 20 Mbps (depending on environment). Under optimum conditions, such a network can support MPEG2 (8 Mbps) streaming playback for up to two computers. For best results, simultaneous playback with multiple computers should be avoided.

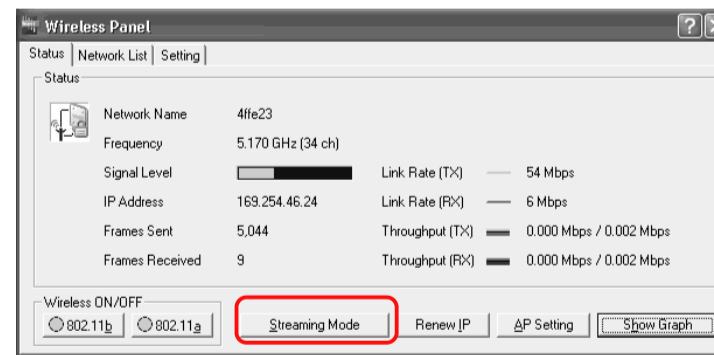
② Contents server and Access Point are connected by wireless link

If the contents server and Access Point are connected by wireless link, a situation similar to ① above occurs. When using the Wireless LAN Access Point PCWA-A500, connect the Network 2 connector with a cross-wired cable, as shown below.



③ Under Windows XP, above conditions ① and ② do not apply, but there are occasional dropped frames

Set "Streaming Mode" under the "Status" tab of Wireless Panel to On. This temporarily suspends the Windows XP wireless configuration functions (Wireless Zero Configuration service) in order to optimize performance.



Note

When playback of streaming data is finished, do not forget to set the "Streaming Mode" button to Off. If the setting is left at On, network switching is not possible.

Case 9 Some functions and settings are not available to some users

Under Windows 2000 and Windows XP, some functions are restricted depending on access privileges of the user.

Note

To install the supplied software on a computer running Windows 2000, log on with a user account listed in "Administrators". To install the supplied software on a computer running Windows XP, log on with a user account with administrator privileges. You cannot install the software when logged on with any other account.

Limitations according to access privileges are as follows

User account type	Limitation
Windows 2000: Administrator	Can use all functions (no restrictions). Actual functions will depend on OS.
Windows XP: Computer Administrator	Windows 2000: Cannot install Wireless Panel and Wireless LAN PC Card driver. Cannot switch and register networks. Cannot set wireless transmission to On/Off. (Transmission status monitoring and Access Point configuring is possible.)
Other user	Windows XP: Cannot install Wireless Panel and Wireless LAN PC Card driver. Cannot use streaming mode and cannot set wireless transmission to On/Off.

Case 10 How to configure the PCWA-A200 and PCWA-A220?

The Wireless LAN Access Points PCWA-A200 and PCWA-A220 are configured using a setup utility and scan utility software supplied with the respective Access Point. For details, see the manuals provided with the Access Point.

Free Manuals Download Website

<http://myh66.com>

<http://usermanuals.us>

<http://www.somanuals.com>

<http://www.4manuals.cc>

<http://www.manual-lib.com>

<http://www.404manual.com>

<http://www.luxmanual.com>

<http://aubethermostatmanual.com>

Golf course search by state

<http://golfingnear.com>

Email search by domain

<http://emailbydomain.com>

Auto manuals search

<http://auto.somanuals.com>

TV manuals search

<http://tv.somanuals.com>