

SpeedStream®

Wireless DSL/Cable Router

Model SS2624

SIEMENS

Part No. 007-0311-001

TABLE OF CONTENTS

CHAPTER 1 INTRODUCTION	1
Features of the DSL/Cable Router	1
Package Contents	3
Physical Details	4
CHAPTER 2 INSTALLATION	7
Requirements	7
Procedure	7
CHAPTER 3 SETUP	9
Overview	9
Configuration Program	10
Setup Wizard	12
LAN Screen	15
Wireless Screen	17
Password Screen	21
CHAPTER 4 PC CONFIGURATION	22
Overview	22
Windows Clients	22
Printer Setup for Windows	34
Macintosh Clients	40
Linux Clients	40
Other Unix Systems	41
Wireless Station Configuration	42
CHAPTER 5 OPERATION AND STATUS	43
Operation	43
Status Screen	44
Connection Status - PPPoE	46
Connection Status - PPTP	48
Connection Details - Fixed/Dynamic IP Address	49
CHAPTER 6 ADVANCED FEATURES	51
Overview	51
Advanced Internet Screen	51
URL Filter	55
Virtual Servers	57
Dynamic DNS	60
Remote Management	62
Access Control	63
Firmware Upgrade	68
CHAPTER 7 ADVANCED CONFIGURATION	69
Overview	69
Network Clients Screen	70
Options	72
Printer Port	74
MAC Address	75
Routing	77
Security	81

APPENDIX A TROUBLESHOOTING	83
Overview	83
General Problems	83
Internet Access.....	83
Printing.....	84
APPENDIX B SPECIFICATIONS	87
SpeedStream Wireless DSL/Cable Router	87
APPENDIX C TECHNICAL SUPPORT	88

© 2002 Efficient Networks, Inc. A Siemens Company. All rights reserved. Efficient Networks, its logos and SpeedStream are registered and unregistered trademarks of Efficient Networks, Inc. Siemens and the Siemens logo are trademarks of Siemens AG, Germany. All other trademarks are held by their respective companies. Efficient Networks reserves the right to make changes to product specifications at any time without notice.

All trademarks and trade names are the properties of their respective owners.

Chapter I

Introduction

1

This Chapter provides an overview of the SpeedStream Wireless DSL/Cable Router's features and capabilities.

Congratulations on the purchase of your new SpeedStream DSL/Cable Router; commonly referred to as a Broadband Router. The SpeedStream Wireless DSL/Cable Router is a multi-function device providing the following services:

- **Wireless LAN Access Point** for equipment compliant with the IEEE802.11b (DSSS) specifications.
- **Shared Broadband Internet Access** for all LAN users.
- **4-Port Switching Hub** for 10BaseT or 100BaseT connections.
- **Network Printer** - LAN users can share the printer attached to the SpeedStream Router.

10/100Base-T LAN

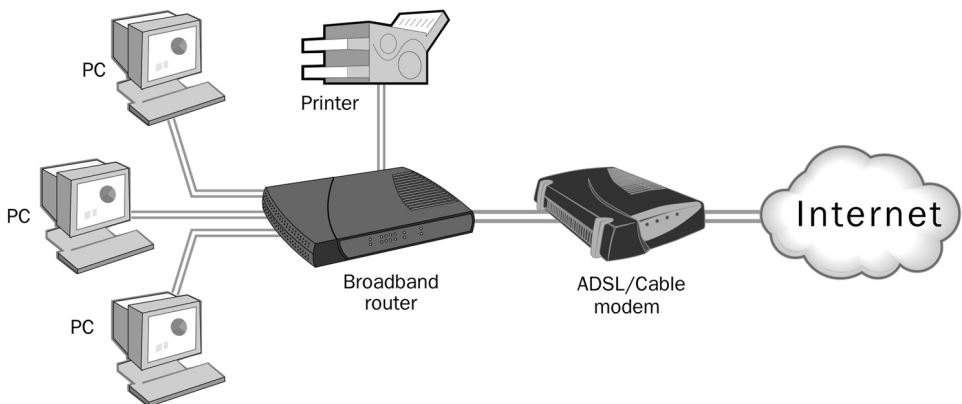


Figure 1: SpeedStream Router

Features of the DSL/Cable Router

The SpeedStream Wireless DSL/Cable Router incorporates many advanced features, carefully designed to provide sophisticated functions while being easy to use.

Internet Access Features

- **Shared Internet Access.** All users on the LAN can access the Internet through the DSL/Cable Router, using only a single external IP Address. The local (invalid) IP Addresses are hidden from external sources. This process is called NAT (Network Address Translation).
- **DSL & Cable Modem Support.** The DSL/Cable Router has a 10BaseT Ethernet port for connecting a DSL or Cable Modem. All popular DSL and Cable Modems are supported.

- **PPPoE and PPTP Support.** The Internet (WAN port) connection supports PPPoE (PPP over Ethernet) and PPTP (Peer-to-Peer Tunneling Protocol), as well as "Direct Connection" type services.
- **Fixed or Dynamic IP Address.** On the Internet (WAN port) connection, the DSL/Cable Router supports both Dynamic IP Address (IP Address is allocated on connection) and Fixed IP Address.

Wireless Features

- **Standards Compliant.** The Wireless DSL/Cable Router complies with the IEEE802.11b (DSSS) specifications for Wireless LANs.
- **WEP support.** Support for WEP (Wired Equivalent Privacy) is included. Both 64 Bit and 128 Bit keys are supported.
- **Access Control.** The Access Control feature can ensure that only trusted Wireless Stations can access your LAN.
- **Simple Configuration.** If the default settings are unsuitable, they can be changed quickly and easily.

Advanced Internet Functions

- **Conferencing & Telephony Applications.** Internet Telephony and Conferencing applications, which are often difficult to use when behind a Firewall, are supported.
- **Special Internet Applications.** Applications that use non-standard connections or port numbers are normally blocked by the Firewall. The ability to define and allow such applications is provided, to enable such applications to be used normally.
- **Virtual Servers.** This feature allows Internet users to access Internet servers on your LAN. The required setup is quick and easy.
- **DMZ.** One (1) PC on your local LAN can be configured to allow unrestricted 2-way communication with Servers or individual users on the Internet. This provides the ability to run programs that are incompatible with Firewalls.
- **URL Filter.** Use the URL Filter to block access to undesirable Web sites by LAN users.
- **Internet Access Log.** See which Internet connections have been made.
- **VPN Support.** VPN (Virtual Private Networking) connections using PPTP and IPSec are transparently supported - no configuration is required.

LAN Features

- **4-Port Switching Hub.** The DSL/Cable Router incorporates a 4-port 10/100BaseT-switching hub, making it easy to create or extend your LAN.
- **DHCP Server Support.** Dynamic Host Configuration Protocol provides a dynamic IP address to PCs and other devices upon request. The DSL/Cable Router can act as a **DHCP Server** for devices on your local LAN and WLAN.
- **Multi Segment LAN Support.** LANs containing one or more segments are supported, via the Router's RIP (Routing Information Protocol) support and built-in static routing table.
- **Network Printer.** The printer attached to the DSL/Cable Router becomes a "Network Printer", available to all Windows and Linux (Unix) clients on your LAN.

Configuration & Management

- **Easy Setup.** Use your Web browser from anywhere on the LAN for configuration.
- **Remote Management.** The DSL/Cable Router can be managed from any PC on your LAN. And, if the Internet connection exists, it can also (optionally) be configured via the Internet.
- **UPnP Support.** UPnP (Universal Plug and Play) allows automatic discovery and configuration of the DSL/Cable Router. UPnP is by supported by Windows ME, XP, or later.

Security Features

- **Password - protected Configuration.** Optional password protection is provided to prevent unauthorized users from modifying the configuration data and settings.
- **NAT Protection.** An intrinsic side effect of NAT (Network Address Translation) technology is that by allowing all LAN users to share a single IP address, the location and even the existence of each PC is hidden. From the external viewpoint, there is no network, only a single device - the DSL/Cable Router.
- **Stateful Inspection Firewall.** All incoming data packets are monitored and all incoming server requests are filtered, thus protecting your network from malicious attacks from external sources.
- **Protection against DoS attacks.** DoS (Denial of Service) attacks can flood your Internet connection with invalid packets and connection requests, using so much bandwidth and so many resources that Internet access becomes unavailable. The DSL/Cable Router incorporates protection against DoS attacks.

Package Contents

The following items should be included:

- SpeedStream Wireless DSL/Cable Router (SS2624)
- Wireless Antenna
- Power Adapter
- Quick Start Guide
- CD-ROM containing the on-line manual and Printer Port Driver for Windows®
- Extended Warranty/Product Registration Card

If any of the above items are damaged or missing, please contact SpeedStream Technical Support for assistance.

Physical Details

LEDs

The front panel contains the following LEDs.

Power	<p>On - Normal operation.</p> <p>Off - No power</p>
Status	<p>On - Error condition.</p> <p>Off - Normal operation.</p> <p>Blinking - This LED blinks during start up, or when the Firmware is being upgraded.</p>
LAN Ports (1, 2, 3, 4)	<p>For each LAN port, there are 2 LEDs</p> <ul style="list-style-type: none"> • Link/Act <ul style="list-style-type: none"> • On - Corresponding LAN (hub) port is active. • Off - No active connection on the corresponding LAN (hub) port. • Flashing - Data is being transmitted or received via the corresponding LAN (hub) port. • 100 <ul style="list-style-type: none"> • On - Corresponding LAN (hub) port is using 100BaseT. • Off - Corresponding LAN (hub) port connection is using 10BaseT, or no active connection.
WAN Port	<p>Flashing - data is being transmitted or received via the WAN port.</p> <p>Off - no data is being transferred.</p>
Wireless	<p>On - Wireless connection available; Wireless Access Point is ready for use.</p> <p>Off - No Wireless connection available.</p> <p>Flashing - Data is being transmitted or received via the Wireless access point. This includes "network traffic" as well as user data.</p>
Print Act	<p>On - Connection to printer established.</p> <p>Off - No connection to printer; printer is Off or Off-line.</p> <p>Flashing - Data is being transmitted to the printer.</p>
Print Err	<p>On - Printer error detected.</p> <p>Off - No printer error detected.</p>

Rear Panel

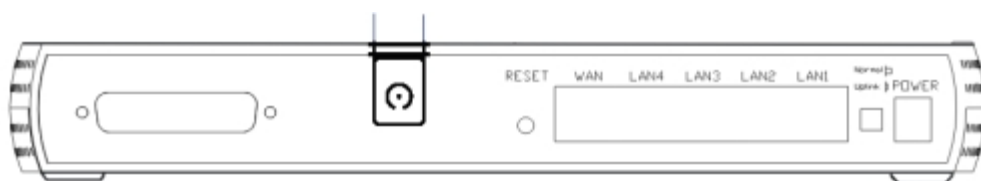


Figure 2: Rear Panel

- Printer Port** Standard parallel printer port. If you wish to share a printer, connect it here.
- Aerial Antenna** Best results are usually obtained with the antenna in a vertical position.
- Reset Button** This button has three (3) functions:
- **Reboot.** When pressed and released, the DSL/Cable Router will reboot (restart).
 - **Diagnostic print-out.** If held down for 3 seconds, a diagnostic print-out will be sent to the attached printer.
 - Ensure the printer is ready.
 - Both *Print* LEDs will flash simultaneously during the diagnostic printing.
 - **Reset to Factory Defaults.** This button can also be used to clear ALL data and restore ALL settings to the factory default values.
- To Clear All Data and restore the factory default values:**
1. Power Off the router
 2. Hold the Reset Button down while you Power On the router.
 3. Continue holding the Reset Button until the Status (Red) LED blinks TWICE.
 4. Release the Reset Button.
The factory default configuration has now been restored, and the Router is ready for use.
- WAN port (10BaseT)** Connect the DSL or Cable Modem here. If your modem came with a cable, use the supplied cable. Otherwise, use a standard CAT5 UTP LAN cable.
- 10/100BaseT LAN connectors** Use standard LAN cables (RJ45 connectors) to connect to your PCs. Both 10BaseT and 100BaseT connections can be used simultaneously.
- If no Uplink push-button is present, all 4 LAN ports are capable of being connected to a hub with a straight-through cable.**
- If an Uplink button is present, see the "Normal/Uplink" button function below.**
- Normal/Uplink Button- Optional** If this button is present, it allows LAN port 1 to be used as an Uplink port for connecting directly to another hub.
- When depressed (in), then the "LAN 1" port becomes an "Uplink" port, and must be connected to a normal port on another Hub.
- If this button is extended (out), then the "LAN 1" port acts as a normal LAN port.

Power port

Connect the supplied power adapter here.

Chapter 2

Installation

2

This Chapter covers the physical installation of the SpeedStream Wireless DSL/Cable Router.

Requirements

- DSL or Cable modem, and an Internet Access account with an ISP, for shared Internet access.
- Network cables. Use standard 10/100BaseT CAT5 network (UTP) cables with RJ45 connectors
- TCP/IP network protocol must be installed on all PCs.
- For shared access to the attached printer, the following clients are supported:
 - Windows 95/98/ME
 - Windows NT 4.0, 2000 or XP
 - Unix (LPD printing)

Procedure

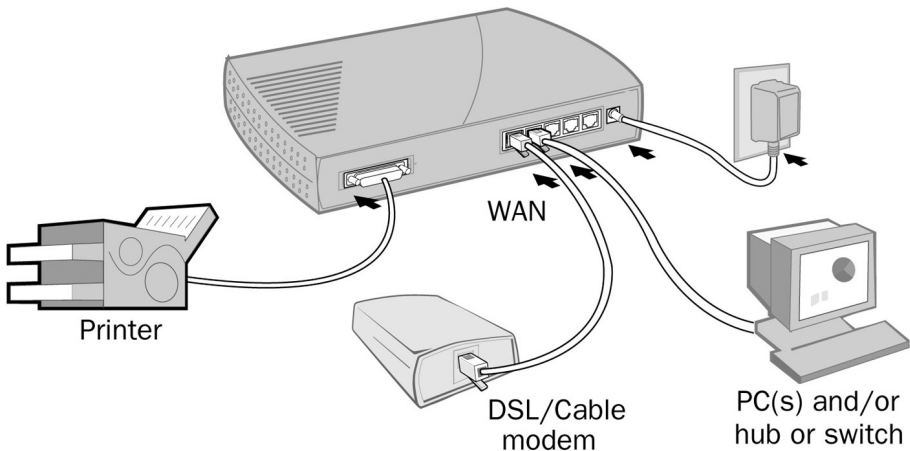


Figure 3: Installation Diagram

1. Choose an Installation Site

Select a suitable place on the network to install the DSL/Cable Router.

Ensure both the DSL/Cable Router and the DSL or Cable modem are powered OFF.

2. Connect LAN Cables

- Use standard 10/100 CAT5 network cables to connect PCs to the Switching Hub ports on the DSL/Cable Router.
- Both 10BaseT and 100BaseT connections can be used simultaneously.



The wired LAN connection, rather than the Wireless interface, is preferred for first-time router setup. Once the Wireless configuration is correct, the Wireless interface can be used for any further configuration.

3. Connect WAN Cable

Connect the DSL or Cable modem to the WAN port on the DSL/Cable Router. Use the cable supplied with your DSL/Cable modem. .

4. Attach Antenna

Attach the supplied wireless antenna to the connector provided on the back of the DSL/Cable Router. Secure the antenna by turning the grooved or ridged ring on the antenna until snug (Do not over tighten).

5. Connect Printer Cable

Use a standard parallel printer cable to connect your printer to the Printer port on the DSL/Cable Router.

6. Power Up

- Power on the Cable or DSL modem.
- Power on the Printer.
- Connect the supplied power adapter to the DSL/Cable Router and power up. Use only the power adapter provided. Using a different one may cause hardware damage

7. Check the LEDs

- The *Status* LED should flash, then turn On. If it stays On, or flashing, there is a hardware error.
- For each active LAN (PC) connection, the LAN *Link/Act* LED should be ON
- The *WAN* LED should be ON.
- The *Wireless* LED should be ON.
- The *Print Act* LED should be ON.

For more information, refer to LEDs in Chapter 1.

Chapter 3

Setup

3

This Chapter provides details of the Setup process.

Overview

This chapter describes the setup procedure for:

- Internet Access
- LAN configuration
- Wireless LAN configuration.
- Assigning a Password to protect the configuration data.

PCs on your local LAN may also require configuration. For details, see *Chapter 4 - PC Configuration*.

Other configuration may be required, depending on which features and functions of the DSL/Cable Router you wish to use. Use the table below to locate detailed instructions for the required functions.

To Do this:	Refer to:
Configure PCs on your LAN.	Chapter 4: PC Configuration
Check DSL/Cable Router's operation and Status.	Chapter 5: Operation and Status
Use any of the following Internet features: <ul style="list-style-type: none">• Special Applications• DMZ• Virtual Servers• Dynamic DNS• Remote Management	Chapter 6: Advanced Features
Use any of the following Advanced Configuration settings: <ul style="list-style-type: none">• Network Clients• Options (Backup DNS, TFTP, UPnP)• Security and Firewall settings• Printer Port setup (for Linux/Unix only)• Routing (RIP and static Routing)• Firmware Upgrade	Chapter 7 Advanced Configuration



Note!

Where use of a certain feature requires that PCs or other LAN devices be configured, this is also explained in the relevant chapter.

Configuration Program

The DSL/Cable Router contains an HTTP server. This enables you to connect to it, and configure it, using your Web Browser. **Your Browser must support JavaScript.** The configuration program has been tested on the following browsers:

- Netscape V4.08 or later
- Internet Explorer V4 or later

Preparation

Before attempting to configure the DSL/Cable Router, please ensure that:

- Your PC can establish a physical connection to the Router. The PC and the DSL/Cable Router must be directly connected (using the Hub ports on the Router) or on the same LAN segment.
- The DSL/Cable Router must be installed and powered ON.
- If the DSL/Cable Router's default IP Address (192.168.254.254) is already used by another device, the other device must be turned OFF until the DSL/Cable Router is allocated a new IP Address during configuration.

Connecting to the Wireless DSL/Cable Router

Using UPnP

If your Windows operating system supports UPnP, an icon for the DSL/Cable Router will appear in the system tray, notifying you that a new network device has been found, and offering to create a new desktop shortcut to the newly-discovered device.

- Unless you intend to change the IP Address of the Router, you can accept the desktop shortcut.
- Whether you accept the desktop shortcut or not, you can always find UPnP devices in *My Network Places* (previously called *Network Neighborhood*).
- Double - click the icon for the DSL/Cable Router (either on the Desktop, or in *My Network Places*) to start the configuration. Refer to the following section *Setup Wizard* for details of the initial configuration process.

Using your Web Browser

To establish a connection from your PC to the DSL/Cable Router:

1. After installing the DSL/Cable Router in your LAN, start your PC. If your PC is already running, restart it.
2. Start your Web browser.
3. In the *Address* box, enter "HTTP://" and the IP Address of the DSL/Cable Router, as in this example, which uses the DSL/Cable Router's default IP Address:

HTTP://192.168.254.254

If you can't connect

If the Router does not respond, check the following:

- The DSL/Cable Router is properly installed, LAN connection is OK, and it is powered ON. You can test the connection by using the "Ping" command:
 - Open the MS-DOS window or command prompt window.
 - Enter the command:
`ping 192.168.254.254`
If no response is received, either the connection is not working, or your PC's IP address is not compatible with the DSL/Cable Router's IP Address. (See next item.)
- If your PC is using a fixed IP Address, its IP Address must be within the range 192.168.254.1 to 192.168.254.253 to be compatible with the DSL/Cable Router's default IP Address of 192.168.254.254. Also, the *Network Mask* must be set to 255.255.255.0. See *Chapter 4 - PC Configuration* for details on checking your PC's TCP/IP settings.
- Ensure that your PC and the DSL/Cable Router are on the same network segment. (If you don't have a router, this must be the case.)

Setup Wizard

The first time you connect to the DSL/Cable Router, the Setup Wizard will run automatically. (The Setup Wizard will also run if the Router's default settings are restored.)

- Step through the Wizard until finished.
 - You need to know the type of Internet connection service used by your ISP. Check the data supplied by your ISP.
 - The common connection types and associated data are explained in the tables below.
- On the final screen of the Wizard, run the test and check that an Internet connection can be established.
 - If the connection fails, check your data, the Cable or DSL modem, and all connections.
 - When you exit the Wizard, you will see the Home screen. If you wish to run the Wizard again at any time, use the "Setup Wizard" button on the main menu.

Cable Modems

Data	Details	Check
Hostname	Some ISPs allocate a "Hostname". If so, you must enter this "Hostname" instead of using the default value.	Did your ISP allocate a "Hostname" to you? If so, enter the name provided. Otherwise, use the default value.
Domain name	Some ISPs allocate a "Domain Name". If so, you must enter this "Domain Name" instead of using the default value.	Did your ISP allocate a "Domain Name" to you? If so, enter the name provided. Otherwise, use the default value.
MAC address	Some ISPs record the MAC (physical) address of your PC, and will only permit connections from that address.	Does your ISP expect a particular MAC address? If YES, enter the value (if known), or use the "Clone MAC address" button to copy your PC's address to the DSL/Cable Router. If NO, use the default MAC address.
IP Address	There are 2 systems used: <ul style="list-style-type: none"> Dynamic - Your IP Address is allocated automatically, when you connect to your ISP. Static - Your ISP allocates a permanent IP Address to you. 	Were you allocated a specified IP Address? If YES, select "Fixed IP address" in the Wizard, and enter the details provided by your ISP. If NO, select "Dynamic IP address" in the Wizard.

DSL Modems

Connection Type	Details	Data Required
PPPoE	You connect to the ISP only when required. The IP address is allocated automatically.	Username and password. Note that this is the Username and password for Internet access , not for E-mail.
PPTP	Mainly used in Europe. You connect to the ISP only when required.	<ul style="list-style-type: none"> • PPTP Server IP Address. • User name and password. • Your IP Address Check if were you allocated an IP Address by your ISP. <ul style="list-style-type: none"> • If so, select "Fixed IP address" in the Wizard, and enter the details provided by your ISP. • Otherwise, select "Dynamic IP address" in the Wizard.



Note!

If your ISP currently requires using PPPoE client software on your PC, this software is no longer required and should be disabled or uninstalled.

Other Modems (e.g. Satellite Broadband)

Data	Details	Check
IP Address	<p>There are 2 systems used:</p> <ul style="list-style-type: none"> • Dynamic -Your IP Address is allocated automatically, when you connect to you ISP. • Static - Your ISP allocates a permanent IP Address to you. 	<p>Were you allocated a specified IP Address?</p> <p>If YES, select "Fixed IP address" in the Wizard, and enter the details provided by your ISP.</p> <p>If NO, select "Dynamic IP address" in the Wizard.</p>

Home Screen

After finishing the Setup Wizard, you will see the *Home* screen. When you connect in the future, you will see this screen when you connect. An example screen is shown below.

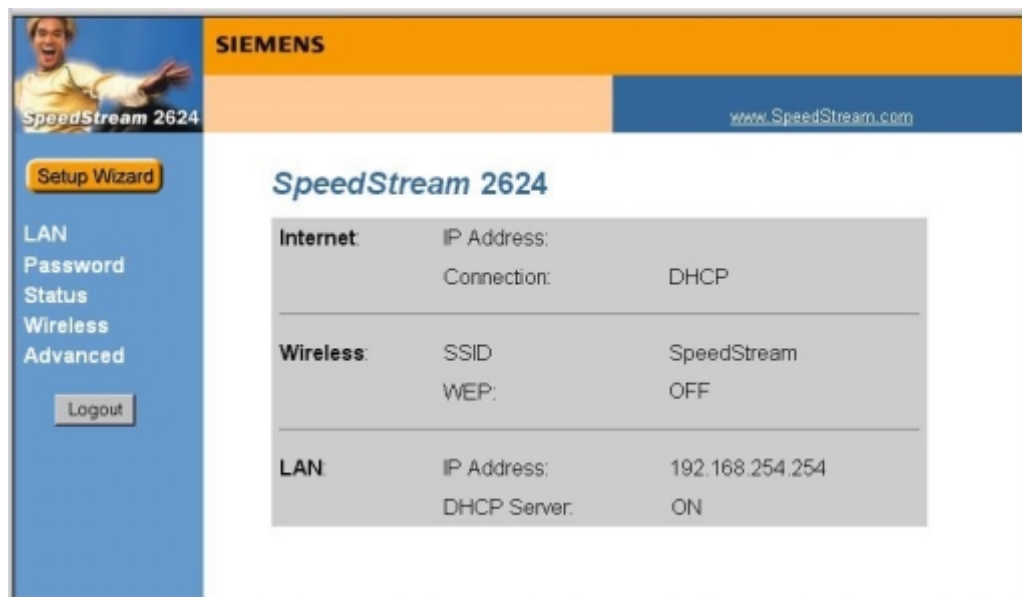


Figure 4: Home Screen

Navigation & Data Input

- Use the menu bar on the left of the screen, and the "Back" button on your Browser, for navigation.
- Changing to another screen without clicking "Save" does NOT save any changes you may have made. You must "Save" before changing screens or your data will be ignored.
- When finished, you should use the "Logout" button, rather than just close your Browser.



Note!

On each screen, clicking the "Help" button will display help for that screen.

From any help screen, you can access the list of all help files (help index).

LAN Screen

Use the *LAN* link on the main menu to reach the *LAN* screen. An example screen is shown below:

The screenshot shows the LAN configuration interface. It includes the following elements:

- LAN** (Section Header)
- TCP/IP** (Section Header)
- IP Address:** 192.168.254.254
- Subnet Mask:** 255.255.255.0
- DHCP Server**
- Start IP Address:** [] . [] . [] . 1
- Finish IP Address:** [] . [] . [] . 253
- Buttons:** Save, Cancel, Help

Figure 5: LAN Screen

Data - LAN Screen

TCP/IP	
IP Address	IP address for the Wireless DSL/Cable Router, as seen from the local LAN. Use the default value unless the address is already in use or your LAN is using a different IP address range. In the latter case, enter an unused IP Address from within the range used by your LAN.
Subnet Mask	The default value 255.255.255.0 is standard for small (class "C") networks. For other networks, use the Subnet Mask for the LAN segment to which the DSL/Cable Router is attached (the same value as the PCs on that LAN segment).
DHCP Server	<ul style="list-style-type: none"> If Enabled, the DSL/Cable Router will allocate IP Addresses to PCs (DHCP clients) on your LAN when they start up. The default (and recommended) value is Enabled. If you are already using a DHCP Server, this setting must be Disabled, and the existing DHCP server must be re-configured to treat the DSL/Cable Router as the Gateway. See the following section for further details. The Start IP Address and Finish IP Address fields set the values used by the DHCP server when allocating IP Addresses to DHCP clients. This range also determines the number of DHCP clients supported. <p>See the following section for further details on using DHCP.</p>
Buttons	
Save	Save the data on screen.
Cancel	The "Cancel" button will discard any data you have entered and reload the file from the DSL/Cable Router.

DHCP

What DHCP Does

A DHCP (Dynamic Host Configuration Protocol) **server** allocates a valid IP address to a DHCP **client** (PC or device) upon request.

- The client request is made when the client device starts up (boots).
- The DHCP Server provides the *Gateway* and *DNS* addresses to the client, as well as allocating an IP Address.
- The DSL/Cable Router can act as a **DHCP server**.
- Windows 95/98/ME and other non-Server versions of Windows will act as a DHCP **client**. This is the default Windows setting for the TCP/IP network protocol. However, Windows uses the term *Obtain an IP Address automatically* instead of "DHCP Client".
- You must NOT have two (2) or more DHCP Servers on the same LAN segment. (If your LAN does not have other Routers, this means there must only be one (1) DHCP Server on your LAN.)

Using the DSL/Cable Router's DHCP Server

This is the default setting. The DHCP Server settings are on the *LAN* screen. On this screen, you can:

- Enable or Disable the DSL/Cable Router's *DHCP Server* function.
- Set the range of IP Addresses allocated to PCs by the DHCP Server function.



Note!

You can assign Fixed IP Addresses to some devices while using DHCP, provided that the Fixed IP Addresses are NOT within the range used by the DHCP Server.

Using another DHCP Server

You can only use one (1) DHCP Server per LAN segment. If you wish to use another DHCP Server, rather than the DSL/Cable Router's, the following procedure is required.

1. Disable the DHCP Server feature in the DSL/Cable Router. This setting is on the LAN screen.
2. Configure the DHCP Server to provide the DSL/Cable Router's IP Address as the *Default Gateway*.

To Configure your PCs to use DHCP

This is the default setting for TCP/IP under Windows 95/98/Me. See *Chapter 4 - Client Configuration* for the procedure to check these settings.

Wireless Screen

The Wireless Access Point settings must match the other Wireless stations. To change the DSL/Cable Router's default settings for the Wireless Access Point feature, use the *Wireless* link on the main menu to reach the *Wireless* screen. An example screen is shown below.

Wireless

Identification

Regulatory Domain: USA

Station Name: SC0FFB01

SSID (Service Set Identifier)

Options

Channel No:

[WEP](#) data encryption: Off

Access Point

Allow **LAN** access by:

ALL Wireless stations

Selected Wireless stations only

Allow **Internet** access by:

ALL Wireless stations

Selected Wireless stations only

Figure 6: Wireless Screen

Data - Wireless Screen

Identification	
Regulatory Domain	It is illegal to use this device in any location outside of the regulatory domain.
Station name	This is the same as the "Device Name" for the DSL/Cable Router. On your PC, some Wireless status screens may display this name as the name of the Access Point in use.
SSID (ESSID)	<ul style="list-style-type: none"> If using an ESS (Extended Service Set, with multiple access points) this ID is called an ESSID (Extended Service Set Identifier). To communicate, all Wireless stations should use the same SSID/ESSID.
Options	
Channel No.	<ul style="list-style-type: none"> Select the Channel you wish to use on your Wireless LAN. If you experience interference (shown by lost connections and/or slow data transfers) you may need to experiment with different channels to see which is the best. If using multiple Access Points, adjacent Access Points should use different Channels to reduce interference.

WEP data encryption	<ul style="list-style-type: none"> • WEP (Wired Equivalent Privacy) status will display "Enabled" or "Disabled", depending on whether WEP is being used. If used, data is Encrypted before being transmitted, making communication more secure. • Click the "Configure WEP" button to access the WEP sub-screen, and view or change the WEP settings.
Access Point	
Allow LAN access by ...	<ul style="list-style-type: none"> • All Wireless Stations - All wireless stations can use the access point to access your LAN. • Selected Wireless stations only - Only selected wireless stations can access your LAN. To select the required wireless stations, click the "Select Stations" button.
Allow Internet access by ...	<ul style="list-style-type: none"> • All Wireless Stations - All wireless stations can use the access point to access the Internet. • Selected Wireless stations only - Only selected wireless stations can use the access point to access the Internet. To select the required wireless stations, click the "Select Stations" button.
Buttons	
Configure WEP	Click this button to view the WEP sub-screen. See the following section for more details.
Select Stations	Click this button to select the required PCs.
Save	Save the data on screen.
Cancel	The "Cancel" button will discard any data you have entered since the last "Save" operation.

WEP Screen

This screen is accessed by clicking the "Configure WEP" button on the *Wireless* screen. An example WEP screen is shown below. Note that in IE, the "Key Table" is only displayed when required.

Figure 7: WEP Screen

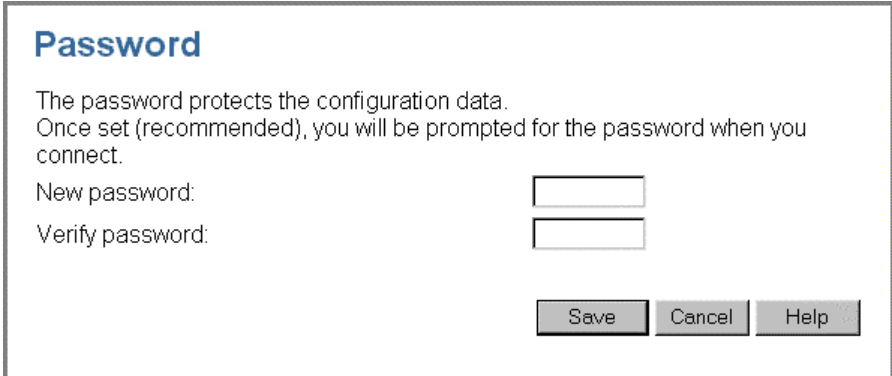
Data - WEP Screen

WEP Data Encryption	
Authentication Type	Select the appropriate value - "Open System" or "Shared Key". Check your Wireless card's documentation to see what method to use. Some Wireless cards do not support both methods.
Encryption	<p>Off</p> <ul style="list-style-type: none"> If OFF (default), data is NOT encrypted before being transmitted. <p>64 Bit Encryption</p> <ul style="list-style-type: none"> If selected, data is encrypted, using the default key, before being transmitted. The receiving station must be set to use 64 Bit Encryption, and have the same Key value in the same position in its key table. Otherwise, it will not be able to decrypt the data. Default Key - select the key you wish to be the default. Transmitted data is ALWAYS encrypted using the Default Key; the other Keys are for decryption only. Key Table: <ul style="list-style-type: none"> This table is used when Encrypting and Decrypting data. All stations, including this Access Point, always transmit data encrypted using their default key. The key number (1, 2, 3, 4) is also transmitted. The receiving station will use the key number (1, 2, 3, 4) to determine which key value to use for decryption. If the key value does not match the transmitting station, decryption will fail. The easiest way to ensure there are no problems is to have every Station, including the Access Point, use the same key table (all entries identical). <p>128 Bit Encryption</p>

	<ul style="list-style-type: none">• If selected, data is encrypted using the key before being transmitted. The receiving station must be set to use 128 Bit Encryption, and have the same Key value. Otherwise, it will not be able to decrypt the data.• Keys - Enter the key values you wish to use. Other stations must have the same key values.
Passphrase	<p>To generate a set of keys from a word or phrase:</p> <ol style="list-style-type: none">1. Select the type of key required (64 Bit or 128 Bit)2. Enter the word or phrase in the "Passphrase" field.3. Click the "Generate Keys" button.4. The screen will refresh with the key values inserted.

Password Screen

The password screen allows you to assign a password to the DSL/Cable Router.



Password

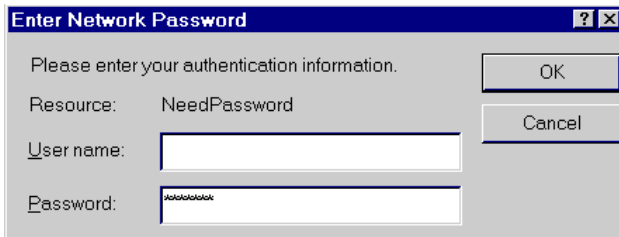
The password protects the configuration data.
Once set (recommended), you will be prompted for the password when you connect.

New password:

Verify password:

Figure 8: Password Screen

Once you have assigned a password to the DSL/Cable Router (on the *Password* screen above) you will be prompted for the password when you connect, as shown below. (If no password has been set, this dialog will not appear.)



Enter Network Password [?] [X]

Please enter your authentication information.

Resource: NeedPassword

User name:

Password:

Figure 9: Password Dialog

- Leave the "User Name" blank.
- Enter the password for the DSL/Cable Router, as set on the *Password* screen above.

Chapter 4

PC Configuration



This Chapter details the PC Configuration required for each PC on the local LAN.

Overview

For each PC, the following may need to be configured:

- TCP/IP network settings
- Wireless settings
- Internet Access configuration
- Printer configuration

Windows Clients

This section describes how to configure Windows clients for:

- Internet access via the DSL/Cable Router
- Sharing the Printer connected to the DSL/Cable Router.

The first step is to check the PC's TCP/IP settings.

The DSL/Cable Router uses the TCP/IP network protocol for all functions, so it is essential that the TCP/IP protocol be installed and configured on each PC.

TCP/IP Settings - Overview

If using the default DSL/Cable Router settings, and the default Windows TCP/IP settings, no changes need to be made.

- By default, the DSL/Cable Router will act as a DHCP Server, automatically providing a suitable IP Address (and related information) to each PC when the PC boots.
- For all non-Server versions of Windows, the default TCP/IP setting is to act as a DHCP client.

If using a Fixed (specified) IP address, the following changes are required:

- The *Gateway* must be set to the IP address of the DSL/Cable Router
- The *DNS* should be set to the address provided by your ISP.



If your LAN has a Router, the LAN Administrator must re-configure the Router itself. Refer to *Chapter 7 - Routing* for details.

Checking TCP/IP Settings - Windows 9x/ME:

1. Select *Control Panel - Network*. You should see a screen like the following:

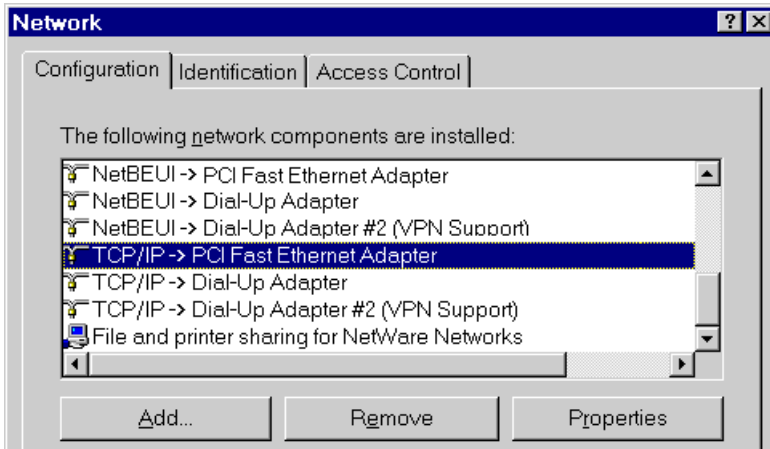


Figure 10: Network Configuration

2. Select the *TCP/IP* protocol for your network card.
3. Click on the *Properties* button. You should then see a screen like the following.

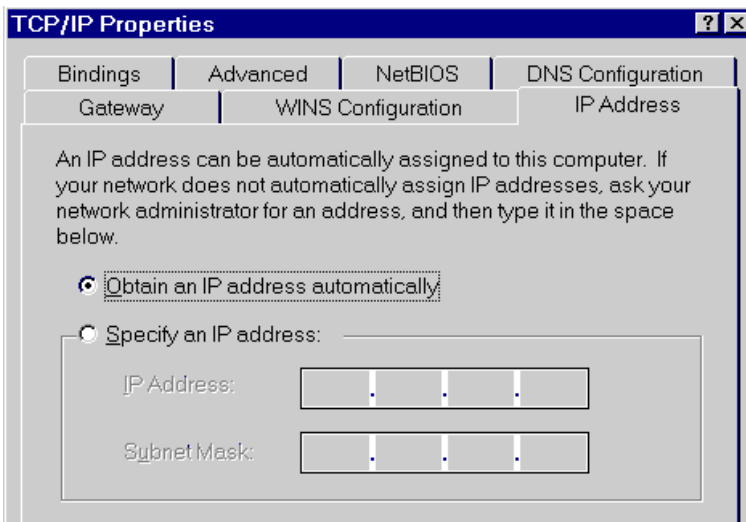


Figure 11: IP Address (Win 95)

Ensure your TCP/IP settings are correct, as follows:

Using DHCP

To use DHCP, select the radio button *Obtain an IP Address automatically*. This is the default Windows settings.

Restart your PC to ensure it obtains an IP Address from the DSL/Cable Router.

Using "Specify an IP Address"

- If your PC is already configured, do NOT change the settings on the IP Address tab shown in Figure 11 above.

- On the *Gateway* tab, enter the DSL/Cable Router's IP address in the *New Gateway* field and click *Add*. Your LAN administrator can advise you of the IP Address they assigned to the DSL/Cable Router.

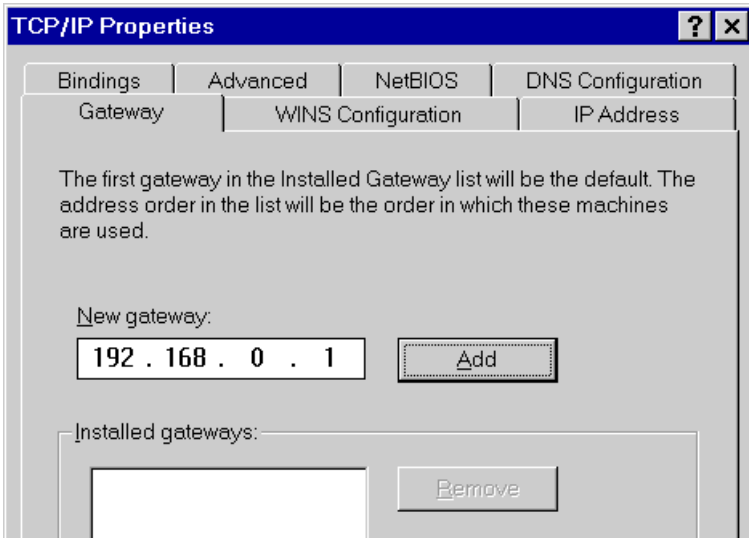


Figure 12: Gateway Tab (Win 95/98)

- On the *DNS Configuration* tab, ensure *Enable DNS* is selected. If the *DNS Server Search Order* list is empty, enter the DNS address provided by your ISP in the fields beside the *Add* button, then click *Add*.

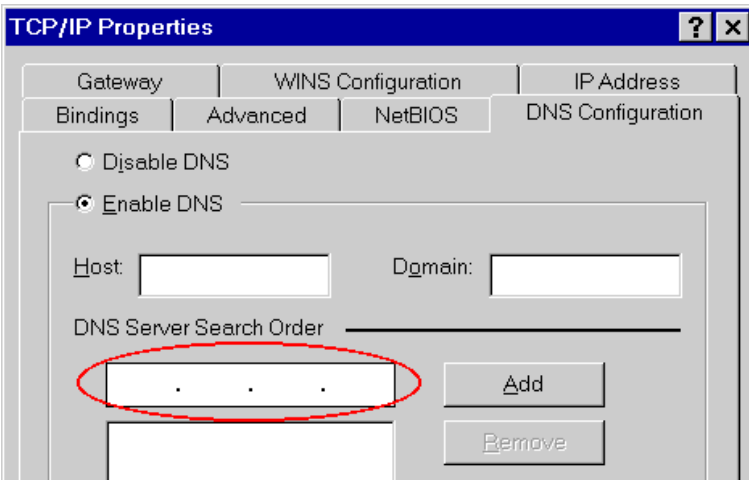


Figure 13: DNS Tab (Win 95/98)

Checking TCP/IP Settings - Windows NT4.0

1. Select *Control Panel - Network*, and, on the *Protocols* tab, select the TCP/IP protocol, as shown below.

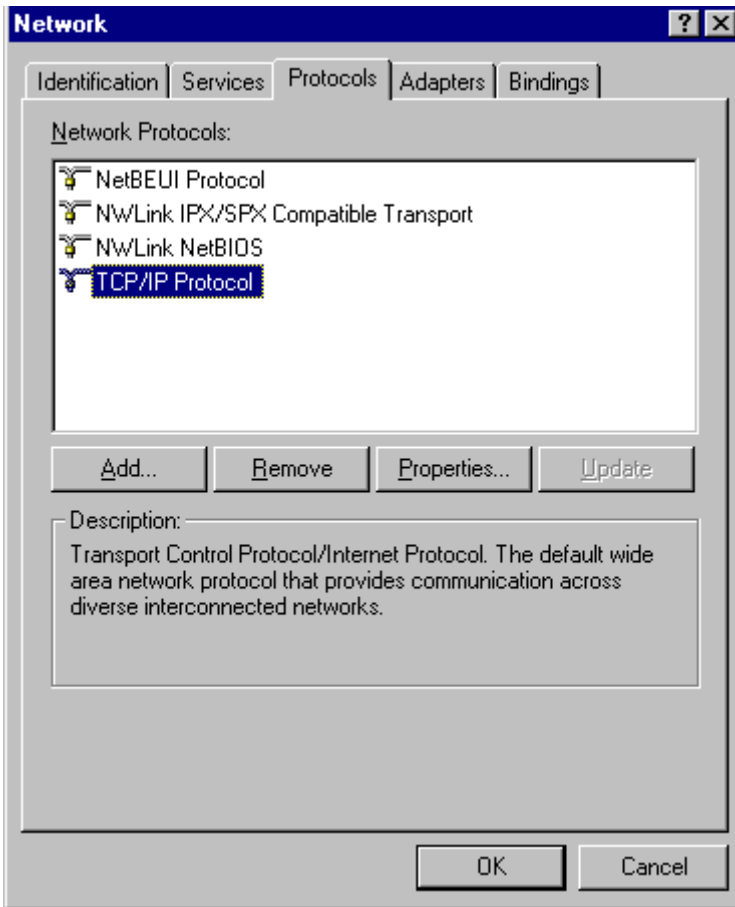


Figure 14: Windows NT4.0 - TCP/IP

2. Click the *Properties* button to see a screen like the one below.

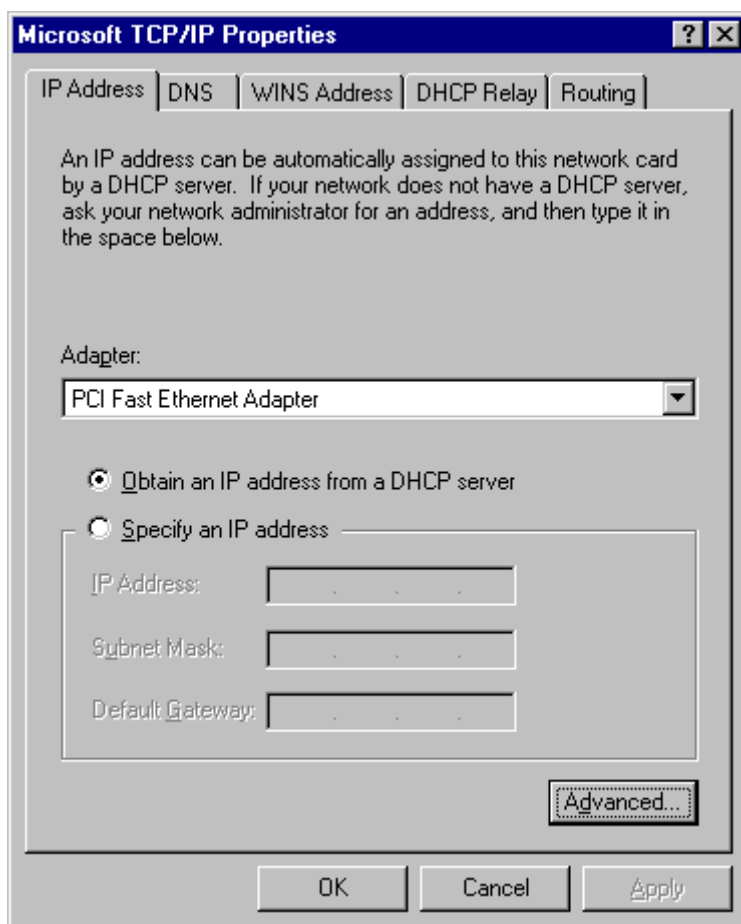


Figure 15: Windows NT4.0 - IP Address

3. Select the network card for your LAN.
4. Select the appropriate radio button - *Obtain an IP address from a DHCP Server* or *Specify an IP Address*, as explained below.

Obtain an IP address from a DHCP Server

This is the default Windows setting. **Using this method is recommended.** By default, the DSL/Cable Router will act as a DHCP Server.

Restart your PC to ensure it obtains an IP Address from the DSL/Cable Router.

Specify an IP Address

If your PC is already configured, check with your network administrator before making the following changes.

1. The *Default Gateway* must be set to the IP address of the DSL/Cable Router. To set this:
 - Click the *Advanced* button on the screen above.
 - On the following screen, click the *Add* button in the *Gateways* panel, and enter the DSL/Cable Router's IP address, as shown in Figure 16 below.
 - If necessary, use the *Up* button to make the DSL/Cable Router the first entry in the *Gateways* list.

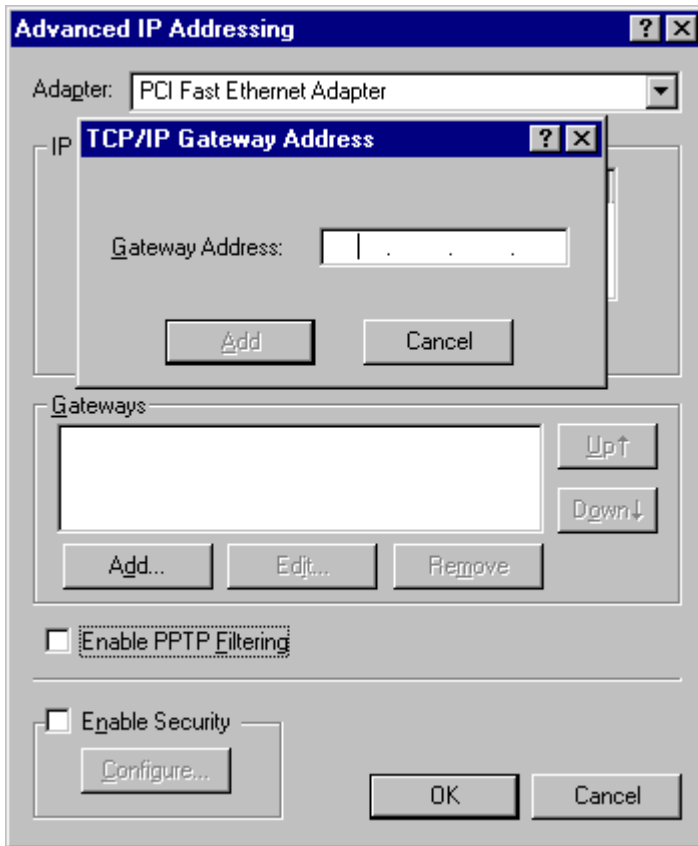


Figure 16 - Windows NT4.0 - Add Gateway

2. The DNS should be set to the address provided by your ISP, as follows:
 - Click the DNS tab.
 - On the DNS screen, shown below, click the *Add* button (under *DNS Service Search Order*), and enter the DNS provided by your ISP.

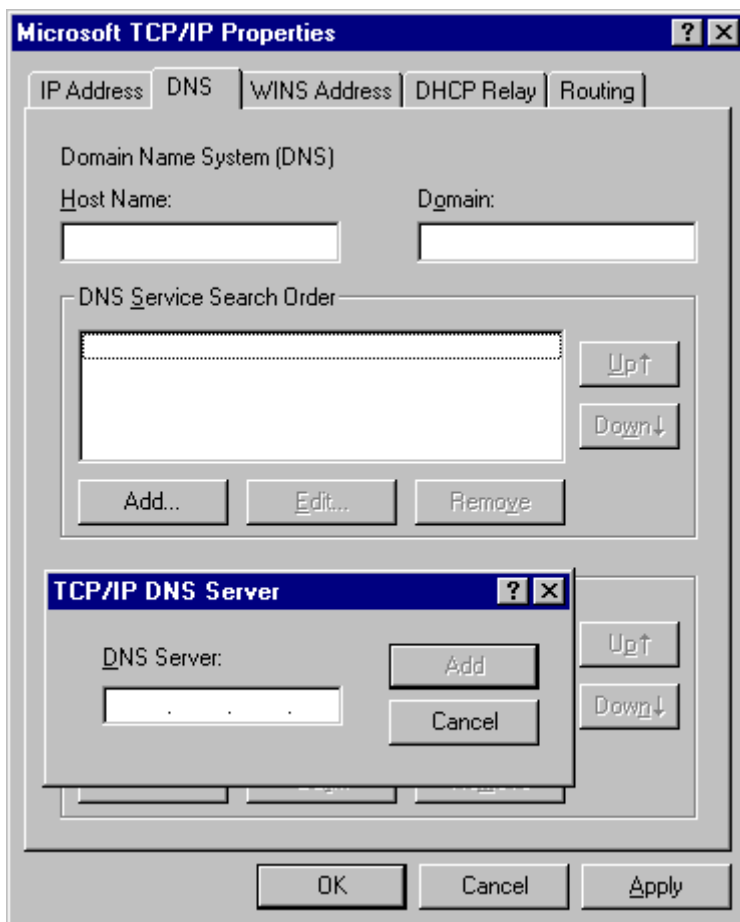


Figure 17: Windows NT4.0 - DNS

Checking TCP/IP Settings - Windows 2000:

1. Select *Control Panel - Network and Dial-up Connection*.
2. Right click the *Local Area Connection* icon and select *Properties*. You should see a screen like the following:

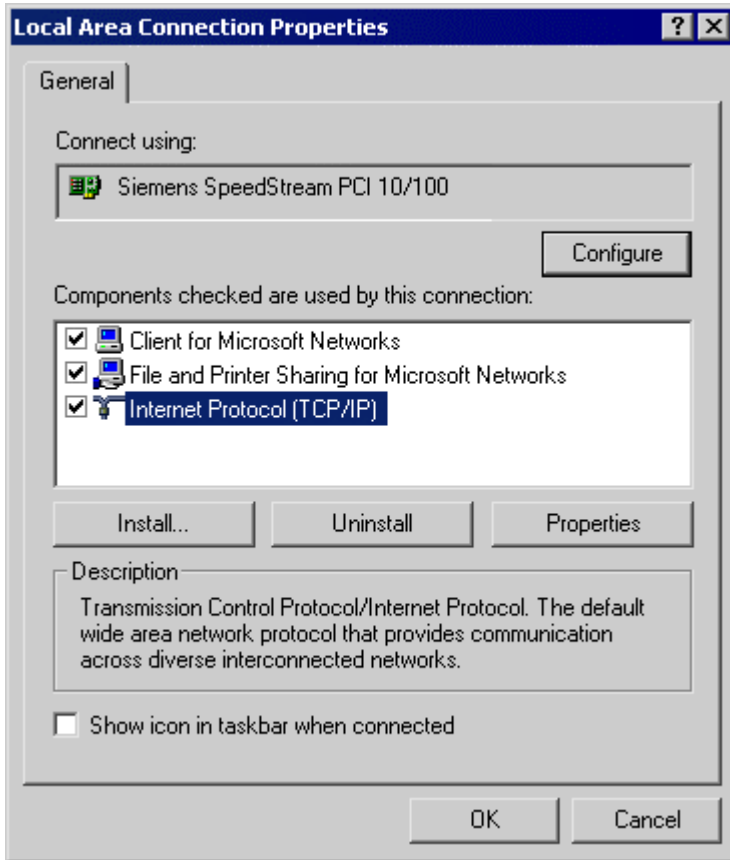


Figure 18: Network Configuration (Win 2000)

3. Select the *TCP/IP* protocol for your network card.
4. Click on the *Properties* button. You should then see a screen like the following.

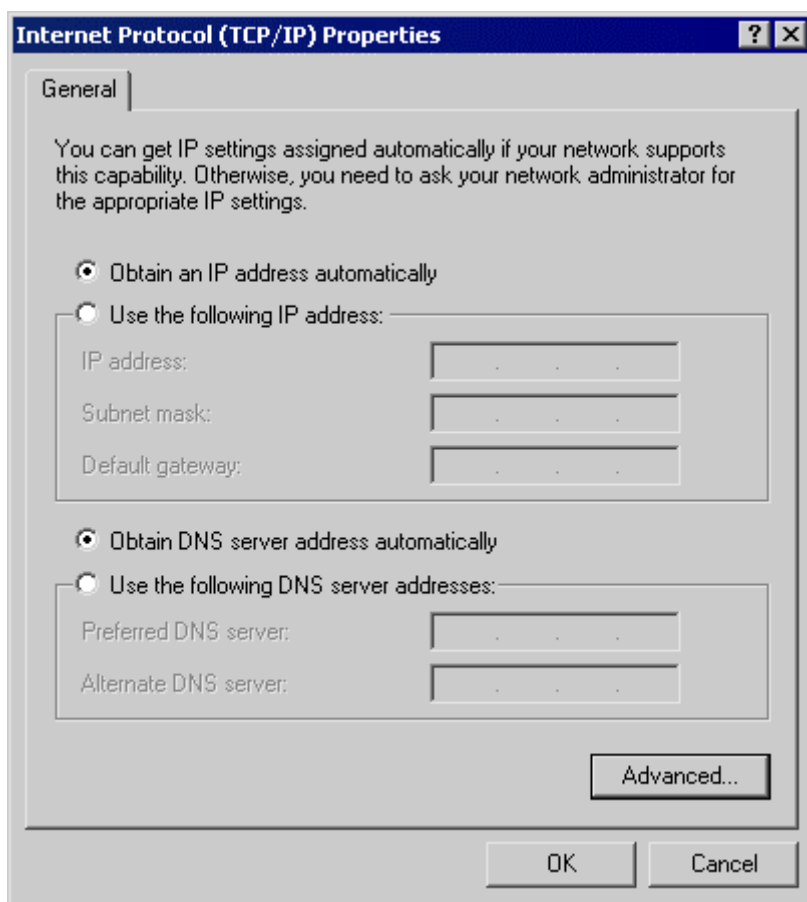


Figure 19: TCP/IP Properties (Win 2000)

5. Ensure your TCP/IP settings are correct:

Using DHCP

To use DHCP, select the radio button *Obtain an IP Address automatically*. This is the default Windows settings.

Restart your PC to ensure it obtains an IP Address from the DSL/Cable Router.

Using a fixed IP Address ("Use the following IP Address")

If your PC is already configured, check your ISP's documentation before making the following changes.

- Enter the DSL/Cable Router's IP address in the *Default gateway* field and click *OK*.
- If the *DNS Server* fields are empty, select *Use the following DNS server addresses*, and enter the DNS address or addresses provided by your ISP, then click *OK*.

Checking TCP/IP Settings - Windows XP:

1. Select *Control Panel - Network Connection*.
2. Right click the *Local Area Connection* and choose *Properties*. You should see a screen like the following:

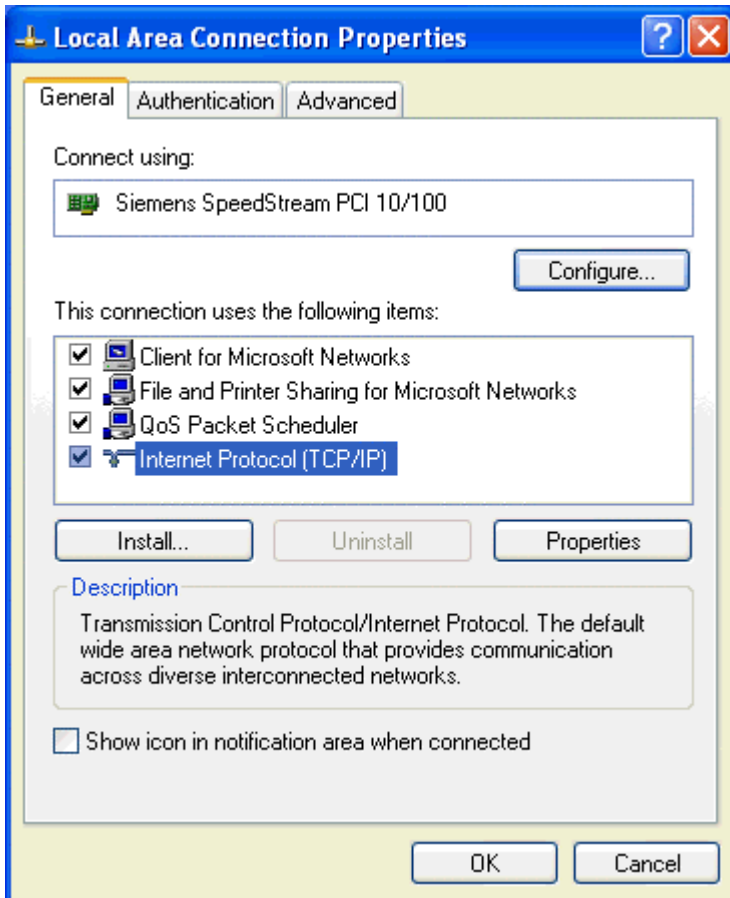


Figure 20: Network Configuration (Windows XP)

3. Select the *TCP/IP* protocol for your network card.
4. Click on the *Properties* button. You should then see a screen like the following.

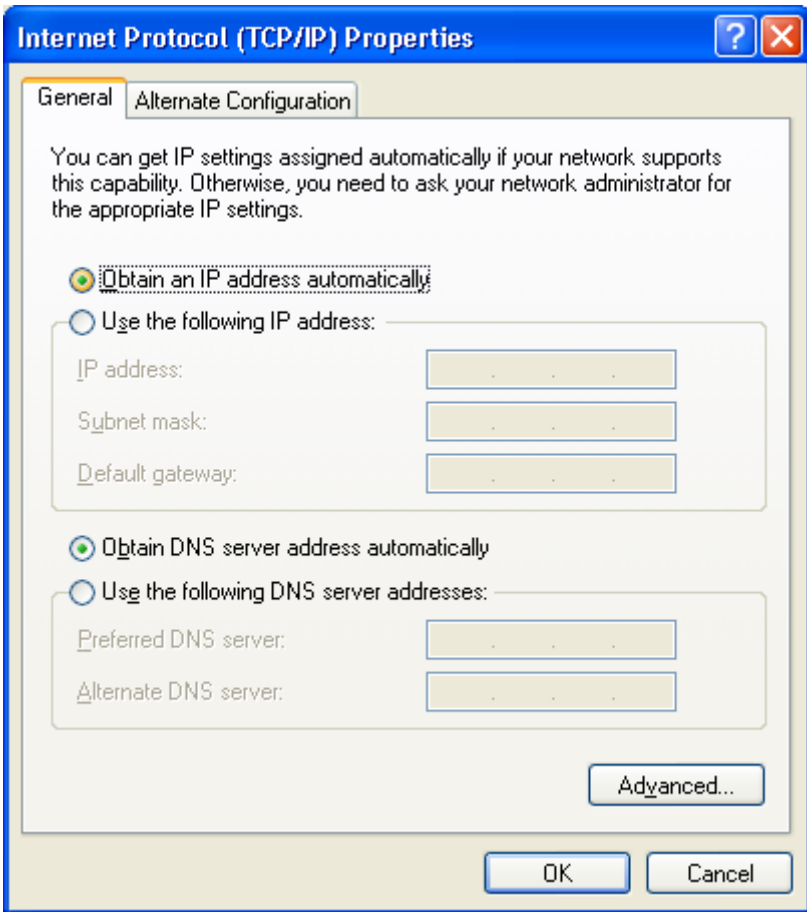


Figure 21: TCP/IP Properties (Windows XP)

5. Ensure your TCP/IP settings are correct.

Using DHCP

To use DHCP, select the radio button *Obtain an IP Address automatically*. This is the default Windows settings.

Restart your PC to ensure it obtains an IP Address from the DSL/Cable Router.

Using a fixed IP Address ("Use the following IP Address")

- If your PC is already configured, do NOT change the settings on the screen shown in Figure 21 above, unless advised to do so by your network administrator.
- You can enter the DSL/Cable Router's IP address in the *Default gateway* field and click *OK*. Your LAN administrator can advise you of the IP Address they assigned to the DSL/Cable Router.
- If the *DNS Server* fields are empty, select *Use the following DNS server addresses*, and enter the DNS address or addresses provided by your ISP, then click *OK*.

Internet Access

To configure your PCs to use the DSL/Cable Router for Internet access:

- Ensure that the DSL modem, Cable modem, or other permanent connection is functional.
- Use the following procedure to configure your Browser to access the Internet via the LAN, rather than by a Dial-up connection.

For Windows 9x/2000

1. Select *Start Menu - Settings - Control Panel - Internet Options*.
2. Select the *Connection* tab, and click the *Setup* button.
3. Select "I want to set up my Internet connection manually, or I want to connect through a local area network (LAN)" and click *Next*.
4. Select "I connect through a local area network (LAN)" and click *Next*.
5. Ensure all of the boxes on the following *Local area network Internet Configuration* screen are **unchecked**.
6. Check the "No" option when prompted "Do you want to set up an Internet mail account now?".
7. Click *Finish* to close the Internet Connection Wizard.
Setup is now completed.

For Windows XP

1. Select *Start Menu - Control Panel - Network and Internet Connections*.
2. Select *Set up or change your Internet Connection*.
3. Select the *Connection* tab, and click the *Setup* button.
4. Cancel the pop-up "Location Information" screen.
5. Click *Next* on the "New Connection Wizard" screen.
6. Select "Connect to the Internet" and click *Next*.
7. Select "Set up my connection manually" and click *Next*.
8. Check "Connect using a broadband connection that is always on" and click *Next*.
9. Click *Finish* to close the New Connection Wizard.
Setup is now completed.

Accessing AOL

To access AOL (America On Line) through the DSL/Cable Router, the *AOL for Windows* software must be configured to use TCP/IP network access, rather than a dial-up connection. The configuration process is as follows:

- Start the *AOL for Windows* communication software. Ensure that it is Version 2.5, 3.0 or later. This procedure will not work with earlier versions.
- Click the *Setup* button.
- Select *Create Location*, and change the location name from "New Locality" to "Broadband Router".
- Click *Edit Location*. Select *TCP/IP* for the *Network* field. (Leave the *Phone Number* blank.)
- Click *Save*, then *OK*.
Configuration is now complete.
- Before clicking "Sign On", always ensure that you are using the "Broadband Router" location.

Printer Setup for Windows

The DSL/Cable Router provides printing support for 2 methods for printing from Windows:

- **Print Port Driver.** After installing the Print Port Driver, Windows users can print directly to the DSL/Cable Router. Print jobs are spooled (queued) on each PC. The supplied Print Port Driver supports Windows 95/98, Windows ME, Windows NT4.0, Windows 2000 and Windows XP.
- **LPD/LPR Printing.** If using Windows NT 4.0 Server or Windows 2000 Server, LPD/LPR printing can be used. No software needs to be installed on either the Windows Server or each client PC. Print jobs will be spooled (queued) on the Windows Server, and can be managed using the standard Windows Server tools.

Print Port Driver Setup

The following procedure is for all versions of Windows (95/98/Me, NT4.0, 2000, XP). The Windows "Add Printer" screens will vary depending on your version of Windows, but the procedure is the same:

1. Insert the supplied CD-ROM into your drive. If the setup program does not start automatically, run SETUP.EXE in the root folder.
2. At the *Select Components* screen, select the **Print Port Driver** option.
3. Follow the prompts to complete the installation.
4. The *Print Port Setup* will then run, and the following screen will be displayed.

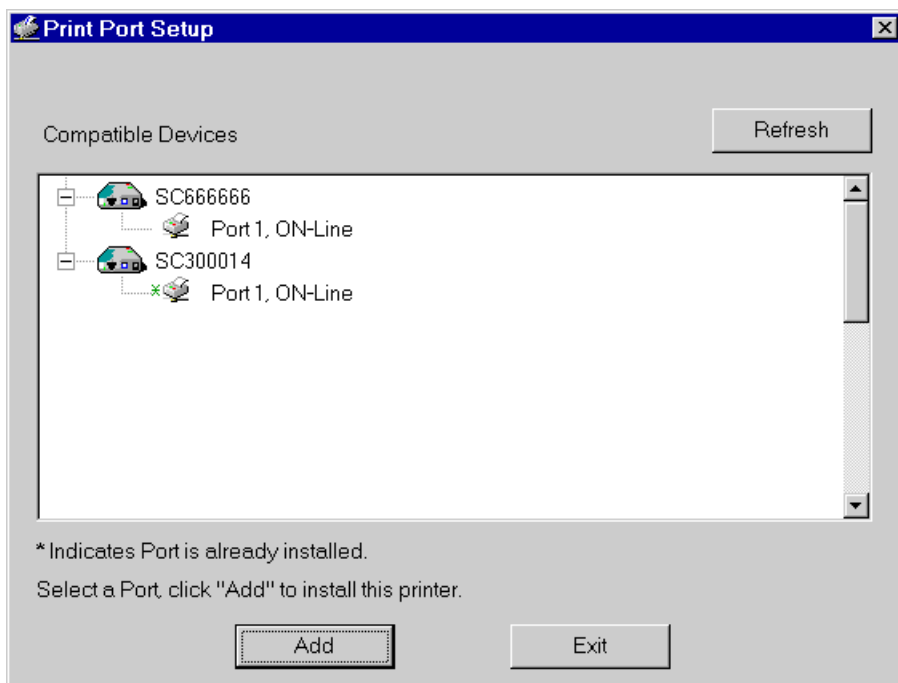
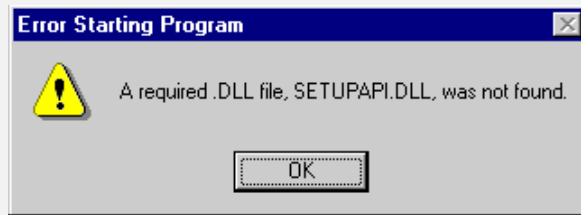


Figure 22: Print Port Setup

5. Select the desired device and port, and then click the "Add" button.



Under Windows 95, if you see the following error message, either install Internet Explorer 4 or later, or follow the procedure in the "Trouble Shooting - Printing" section of Appendix A.



6. A pop-up message will inform you if the port has been created successfully, and then the Windows *Add Printer* wizard will start.
 - Select the correct Printer Manufacturer and Model, or use the "Have Disk" option if appropriate.
 - If desired, change the Printer name so it indicates the device used (e.g. HP2100 on SCA43600)
 - If prompted about Sharing, do NOT enable Printer Sharing for Windows. The router will manage the printer sharing for your network.
7. Installation is now complete. You can now print using this printer.
 - To install additional Printers (on different devices), repeat steps 6 and 7.
 - Use the **Start** menu to run this program in future. The default installation is *Start - Programs - SpeedStream DSL/Cable Router - Add Port*.

Management

- Print jobs can be managed like any Windows printer. Open the *Printers* folder (*Start - Settings - Printers*) and double-click any printer to see the current print jobs.
- If the printer attached to the DSL/Cable Router is changed, just run this program again, and select the correct printer.
- To delete a port created by this setup program, use the Windows *Delete Port* facility:
 - Right-click any printer in the *Printers* folder, and select *Properties*.
 - Locate the *Delete Port* button. This button is on the *Details* or *Ports* tab, depending on your version of Windows.
- If the DSL/Cable Router's IP Address is changed, and you can no longer print, delete the port (see procedure above) and re-install it.

Port Options

The options for the *Print Port Driver* are accessed via the Windows *Port Settings* button.

Use *Start - Settings - Printers* to open the *Printers* folder, then right-click the Printer, and select *Properties*. The *Port Settings* button is on the *Details* or *Port* tab, depending on your version of Windows.

An example screen is shown below:

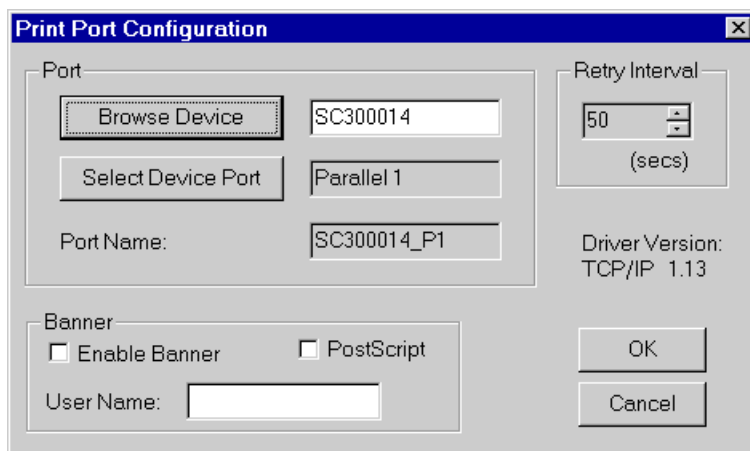


Figure 23: Print Port Configuration

Items shown on this screen are as follows:

Port	If desired, click <i>Browse</i> to select a different device. (The <i>Select Device Port</i> button is provided to allow this software to work with multi-port models.) The <i>Port Name</i> is shown in the <i>Printer's Properties</i> .
Banner	Check this option to print a banner page before each print job. <ul style="list-style-type: none"> • If using a PostScript Printer, check the <i>PostScript</i> box. • The <i>User Name</i> will be printed on the banner page.
Retry Interval	Sets how often Windows will poll the DSL/Cable Router to establish a connection when the printer is busy. Increase this value if you get too many warning messages.

LPD/LPR Printing

LPD/LPR printing can be used with Windows NT 4.0 Server or Windows 2000. No software needs to be installed on client PCs.

Windows NT 4.0 Server Configuration

To use LPD printing, **Microsoft TCP/IP Printing** must be installed and enabled. This can be checked using *Start-Settings-Control Panel-Network - Services*.

To install LPD printing using the DSL/Cable Router, follow this procedure:

1. Go to *Start-Settings-Printer* and invoke the **Add Printer** wizard.
2. When prompted with "This printer will be managed by..", select **My Computer** and click **Next**.
3. Select **Add Port**, then select **LPR Port** and click **New Port**.
4. In the Dialog requesting *Name of Address of server providing lpd*, enter the IP address of the DSL/Cable Router.
5. For *Name of printer or print queue on that server*, enter L1
6. Click **OK**. When returned to the Printer Ports window, simply select **Close** and then install your printer driver as usual.
7. When prompted whether or not the printer will be shared, select the **Sharing** radio button.
8. In the *Shared* dialog box, enter the shared printer name. The shared name is how other users will see this printer. You should advise client PCs of the Server name and this printer name.
9. Click **OK** to save and exit.

Windows 2000 Server Configuration

The *LPD/LPR Port* is not enabled by default. To enable it, use this procedure:

1. In *Control Panel*, select *Add/Remove Programs*, then *Windows Components*.
2. Select *Other Network File and Print Services*, then click the *Details* button.

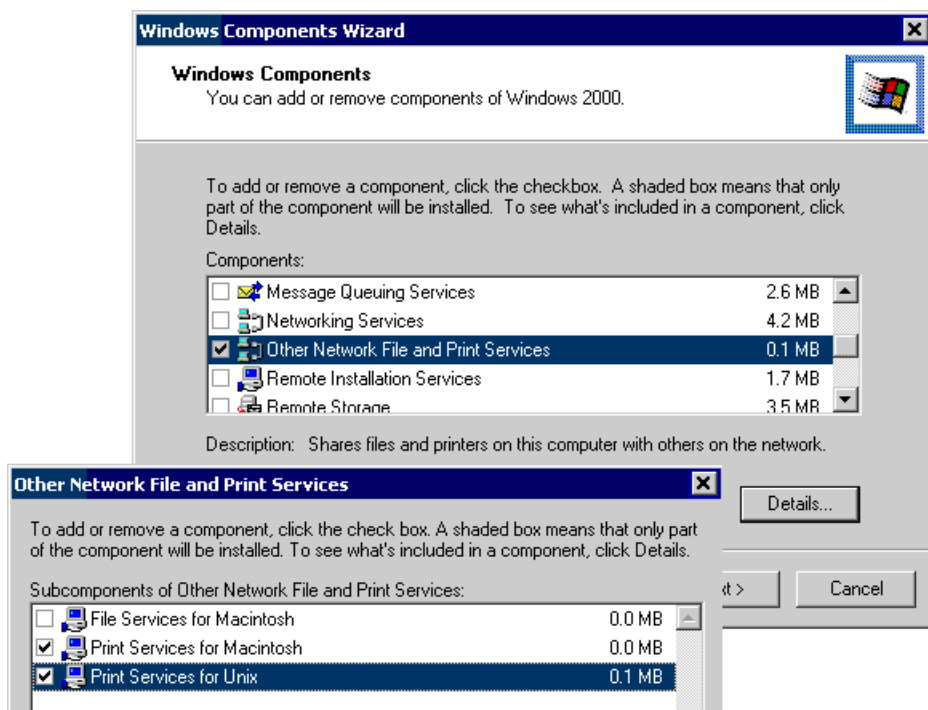


Figure 24: Adding LPD/LPR Port (Win 2000)

3. Enable *Print Services for Unix*, and click OK.
4. Click *Next* and complete the Wizard.

Adding the Printer

1. Open your *Printers* folder, and start the *Add Printer* Wizard.
2. When prompted, select *Local Printer*.
3. On the *Select the Printer Port* screen, select *LPR Port*, as shown below. Click *Next* to continue.

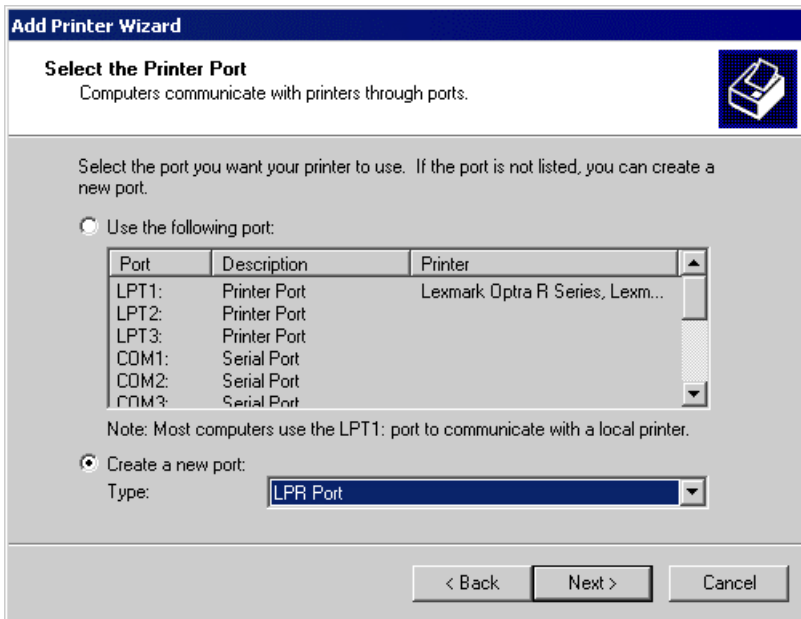


Figure 25: Windows 2000: Select Port

4. In the Dialog requesting *Name or Address of server providing lpd*, enter the IP address of the DSL/Cable Router.
5. For *Name of printer or print queue on that server*, enter L1
6. Click OK, and then *Next*, and continue the Wizard.
7. At the *Select Sharing* screen, select the Radio Button for *Share As*, and enter the shared printer name. The shared name is how other users will see this printer. You should advise client PCs of the Server name and this printer name.
8. Complete the *Add Printer* wizard.

Client PC Setup for LPD/LPR Printing

After configuring the Windows Server, client PCs on the LAN can install the new printer.

The following procedure is for Windows 95/98/ME, Windows NT4.0, and Windows 2000 workstation.

1. Open your *Printers* folder, and start the *Add Printer* Wizard.
2. When prompted, select *Network Printer*
3. When prompted for *Network Path or Queue Name*, click the *Browse* button, and locate the Server and Printer which your Network Administrator advised you to use.
4. Click OK, then *Next*.
5. Select the correct printer Manufacturer and Model, as advised by your Network Administrator, and click *Next*.
6. Follow the prompts to complete the Wizard.
7. The new printer will be listed with any other installed printers, and may be selected when printing from any Windows application.

Macintosh Clients

From your Macintosh, you can access the Internet via the DSL/Cable Router. The procedure is as follows.

1. Open the TCP/IP Control Panel.
2. Select *Ethernet* from the *Connect via* pop-up menu.
3. Select *Using DHCP Server* from the *Configure* pop-up menu. The DHCP Client ID field can be left blank.
4. Close the TCP/IP panel, saving your settings.

Note:

If using manually assigned IP addresses instead of DHCP, the required changes are:

- Set the *Router Address* field to the DSL/Cable Router's IP Address.
- Ensure your DNS settings are correct.

Linux Clients

To access the Internet via the DSL/Cable Router, it is only necessary to set the DSL/Cable Router as the "Gateway".

Ensure you are logged in as "root" before attempting any changes.

Fixed IP Address

By default, most Unix installations use a fixed IP Address. If you wish to continue using a fixed IP Address, make the following changes to your configuration.

- Set your "Default Gateway" to the IP Address of the DSL/Cable Router.
- Ensure your DNS (Name server) settings are correct.

To act as a DHCP Client (recommended)

The procedure below may vary according to your version of Linux and X -windows shell.

1. Start your X Windows client.
2. Select *Control Panel - Network*
3. Select the "Interface" entry for your Network card. Normally, this will be called "eth0".
4. Click the *Edit* button, set the "protocol" to "DHCP", and save this data.
5. To apply your changes
 - Use the "Deactivate" and "Activate" buttons, if available.
 - OR, restart your system.

Printing Setup on Linux

The DSL/Cable Router supports LPD Printing on Linux.

- The DSL/Cable Router supports 3 "Logical Printers" under LPD. To configure the "Logical Printers" on the DSL/Cable Router, refer to *Printer Port* in Chapter 7.
- The procedure to install a LPD printer is detailed below, but may vary according to your version of Linux and X -windows shell.

1. In your X Windows shell, select *Control Panel*, then *Printer Configuration*.

2. Select *Add*. For the printer type, select *Remote Unix (lpd) Queue*.
3. Use the following data to complete the resulting dialog.

Field	Data	Example
Name	Enter a name for this printer	gw_prn
Spool Directory	<i>/var/spool/lpd/printer_name</i> Where <i>printer_name</i> is the "Name" entry above.	<i>/var/spool/lpd/gw_prn</i>
File Limit	Enter a suitable number.	0 (no limit)
Remote Host	DSL/Cable Router's IP address	192.168.254.254
	Note: If you have made a host file entry, you can use the name from the host file instead of the IP Address.	
Remote Queue	<i>Ln</i> Where <i>n</i> is the Logical Printer number (L1, L2, L3). Logical Printers can be configured on the DSL/Cable Router's <i>Advanced - Printer Port</i> screen.	L1

4. Save this data, and exit the Printer Configuration. Configuration is now completed, and the printer is now available for use.

Other Unix Systems

Internet Access

- Ensure the "Gateway" field for your network card is set to the IP Address of the DSL/Cable Router.
- Ensure your DNS (Name Server) settings are correct.

Printing Setup

To use LPD printing to the DSL/Cable Router's printer, install an LPD printer using the standard procedure for your system.

- Use the DSL/Cable Router's IP Address as the location of the remote host
- Use L1, L2, or L3 for the name of the printer on the remote host.

On the DSL/Cable Router, the logical printers (L1, L2, and L3) can be configured on the *Advanced - Printer Port* screen. See *Printer Port* in Chapter 7 for details.

Wireless Station Configuration

This section applies to all Wireless stations wishing to use the DSL/Cable Router's Access Point, regardless of the operating system which is used on the client.

To use the Wireless Access Point in the DSL/Cable Router, each Wireless Station must have compatible settings, as follows:

Mode	The mode must be set to <i>Infrastructure</i> .
SSID (ESSID)	This must match the value used on the DSL/Cable Router. The default value is SpeedStream Note! The SSID is case sensitive.
WEP	By default, WEP on the DSL/Cable Router is disabled . <ul style="list-style-type: none">• If WEP remains disabled on the DSL/Cable Router, all stations must have WEP disabled.• If WEP is enabled on the DSL/Cable Router, each station must use the same settings as the DSL/Cable Router.

Chapter 5

Operation and Status



This Chapter details the operation of the DSL/Cable Router and the status screens.

Operation

Once both the DSL/Cable Router and the PCs are configured, operation is automatic.

However, there are some situations where additional Internet configuration may be required:

- If using Internet-based **Conferencing & Telephony** applications, it may be necessary to specify which PC receives an incoming connection. Refer to *Chapter 6 - Advanced Features* for further details.
- Applications that use non-standard connections or port numbers may be blocked by the DSL/Cable Router's built-in firewall. You can define such applications as **Special Applications** to allow them to function normally. Refer to *Chapter 6 - Advanced Features* for further details.
- Some non-standard applications may require use of the **DMZ** feature. Refer to *Chapter 6 - Advanced Features* for further details.

Status Screen

Use the *Status* link on the main menu to view this screen.

Status	
Internet	Connection Method: Direct Internet IP Address: Connection Status: DHCP <div style="text-align: right;"> <input type="button" value="Access Log"/> <input type="button" value="Connection Details"/> </div>
LAN	IP Address: 192.168.254.254 Network Mask: 255.255.255.0 DHCP Server: ON
System	Device Name: SC0FFB01 Firmware Version: Version 1.0 Release 00 <div style="text-align: right;"><input type="button" value="System Data"/></div>
Printer	Printer Status: Off Line <div style="text-align: right;"><input type="button" value="Abort Current Print Job"/></div>
<input type="button" value="Refresh Screen"/> <input type="button" value="Help"/>	

Figure 26: Status Screen

Data - Status Screen

Internet	
Connection Method	This indicates the current connection method, as set in the Setup Wizard.
Internet IP Address	This IP Address is allocated by the ISP (Internet Service Provider).
Connection Status	Current connection status: <ul style="list-style-type: none"> • OK • No connection • Error If there is an error, you can click the "Connection Details" button to find out more information.
"Access Log" Button	Click this button to open a sub-window and view details of outgoing connections to the Internet. The log contains the following data: <ul style="list-style-type: none"> • Date/Time - When the connection was first established. • Source IP Address - The IP Address of the local PC re-

	<p>questing the Internet connection.</p> <ul style="list-style-type: none"> • Destination - The Internet address which was requested. If the <i>URL Filter</i> is enabled, this address will be shown as a URL. Otherwise, the IP address will be displayed. • Blocked - If the request was blocked by the <i>URL Filter</i> function, this will display "Yes". Otherwise, it will be blank.
"Connection Details" Button	Click this button to open a sub-window and view a detailed description of the current connection. Depending on the type of connection, a "log" may also be available.
LAN	
IP Address	The IP Address of the DSL/Cable Router.
Network Mask	The Network Mask (Subnet Mask) for the IP Address above.
DHCP Server	<p>This shows the status of the DHCP Server function - either "Enabled" or "Disabled".</p> <p>For additional information about the PCs on your LAN, and the IP addresses allocated to them, use the <i>Network Clients</i> option on the <i>Advanced</i> menu.</p>
System	
Device Name	This displays the current name of the DSL/Cable Router.
Firmware Version	The current version of the firmware installed in the DSL/Cable Router.
"System Data" Button	Clicking this button will open a Window which lists all system details and settings.
Printer	
Printer Status	<p>This indicates the current status of the printer. Possible values are:</p> <ul style="list-style-type: none"> • Idle • Printing • Off-line • Out of paper
"Abort Current Print Job" Button	Click this button to terminate the current print job. This button should be used if the current print job is not printing correctly.
Buttons	
Connection Details	View the details of the current Internet connection. The sub-screen displayed will depend on the connection method used. See the following sections for details of each sub-screen.
Access Log	View details of outgoing connections to the internet.
System Data	Display all system information in a sub-window.
Abort Current Print Job	Use this to terminate the current print job if it is not printing correctly.
Refresh Screen	Update the data displayed on screen.

Connection Status - PPPoE

If using PPPoE (PPP over Ethernet), a screen like the following example will be displayed when the "Connection Details" button is clicked.

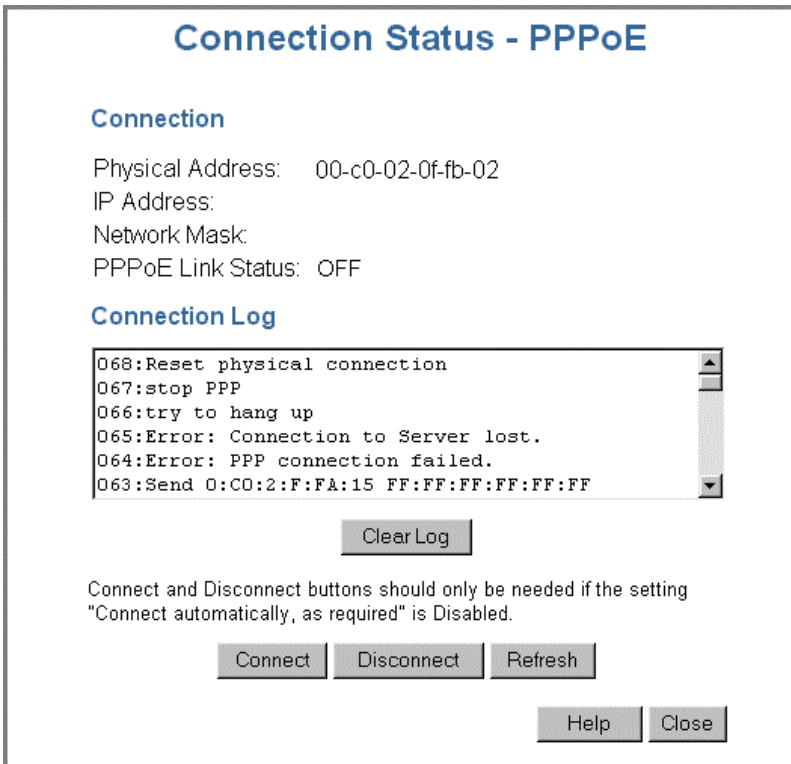


Figure 27: PPPoE Status Screen

Data - PPPoE Status Screen

Connection	
Physical Address	The hardware address of this device, as seen by remote devices on the Internet. (This is different to the hardware address seen by devices on the local LAN.)
IP Address	The IP Address of this device, as seen by Internet users. This address is allocated by your ISP (Internet Service Provider).
Network Mask	The Network Mask associated with the IP Address above.
PPPoE Link Status	<p>This indicates whether or not the connection is currently established.</p> <ul style="list-style-type: none"> • If the connection does not exist, the "Connect" button can be used to establish a connection. • If the connection currently exists, the "Disconnect" button can be used to break the connection.
Connection Log	
Connection Log	<ul style="list-style-type: none"> • The Connection Log shows status messages relating to the existing connection. • The most common messages are listed in the table below.

- The "Clear Log" button will restart the Log, while the Refresh button will update the messages shown on screen.

Buttons

Connect	If not connected, establish a connection to your ISP.
Disconnect	If connected to your ISP, hang up the connection.
Clear Log	Delete all data currently in the Log. This will make it easier to read new messages.
Refresh	Update the data on screen.

Connection Log Messages

Message	Description
Connect on Demand	Connection attempt has been triggered by the "Connect automatically, as required" setting.
Manual connection	Connection attempt started by the "Connect" button.
Reset physical connection	Preparing line for connection attempt.
Connecting to remote server	Attempting to connect to the ISP's server.
Remote Server located	ISP's Server has responded to connection attempt.
Start PPP	Attempting to login to ISP's Server and establish a PPP connection.
PPP up successfully	Able to login to ISP's Server and establish a PPP connection.
Idle time-out reached	The connection has been idle for the time period specified in the "Idle Time-out" field. The connection will now be terminated.
Disconnecting	The current connection is being terminated, due to either the "Idle Time-out" above, or "Disconnect" button being clicked.
Error: Remote Server not found	ISP's Server did not respond. This could be a Server problem, or a problem with the link to the Server.
Error: PPP Connection failed	Unable to establish a PPP connection with the ISP's Server. This could be a login problem (name or password) or a Server problem.
Error: Connection to Server lost	The existing connection has been lost. This could be caused by a power failure, a link failure, or Server failure.
Error: Invalid or unknown packet type	The data received from the ISP's Server could not be processed. This could be caused by data corruption (from a bad link), or the Server using a protocol which is not supported by this device.

Connection Status - PPTP

If using PPTP (Peer-to-Peer Tunneling Protocol), a screen like the following example will be displayed when the "Connection Details" button is clicked.

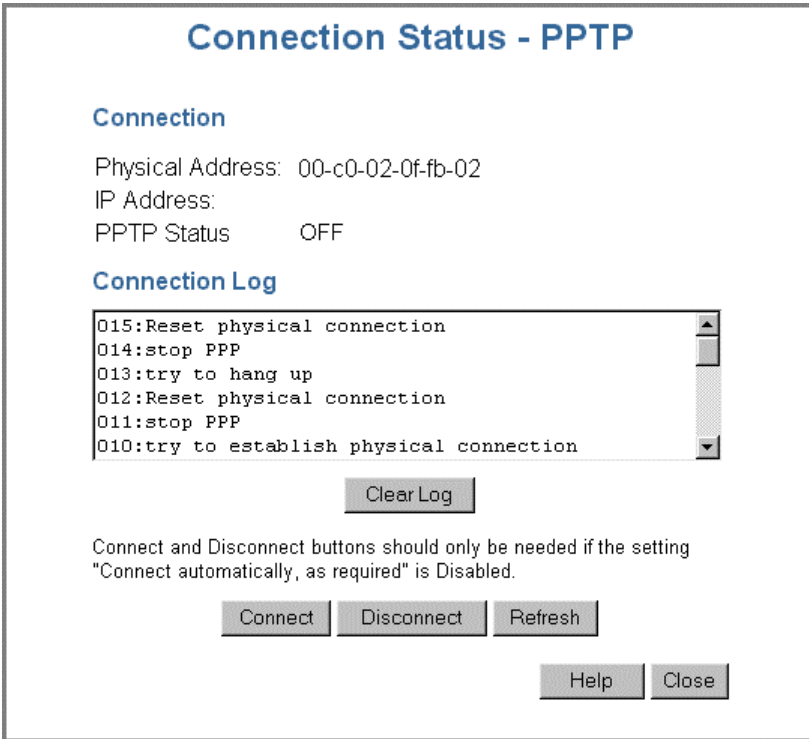


Figure 28: PPTP Status Screen

Data - PPTP Status Screen

Connection	
Physical Address	The hardware address of this device, as seen by remote devices on the Internet. (This is different to the hardware address seen by devices on the local LAN.)
IP Address	The IP Address of this device, as seen by Internet users. This address is allocated by your ISP (Internet Service Provider).
PPTP Status	This indicates whether or not the connection is currently established. <ul style="list-style-type: none"> If the connection does not exist, the "Connect" button can be used to establish a connection. If the connection currently exists, the "Disconnect" button can be used to break the connection.
Connection Log	
Connection Log	<ul style="list-style-type: none"> The Connection Log shows status messages relating to the existing connection. The "Clear Log" button will restart the Log, while the Refresh button will update the messages shown on screen.

Buttons	
Connect	If not connected, establish a connection to your ISP.
Disconnect	If connected to your ISP, hang up the connection.
Clear Log	Delete all data currently in the Log. This will make it easier to read new messages.
Refresh	Update the data on screen.

Connection Details - Fixed/Dynamic IP Address

If your access method is neither PPPoE nor PPTP, a screen like the following example will be displayed when the "Connection Details" button is clicked.

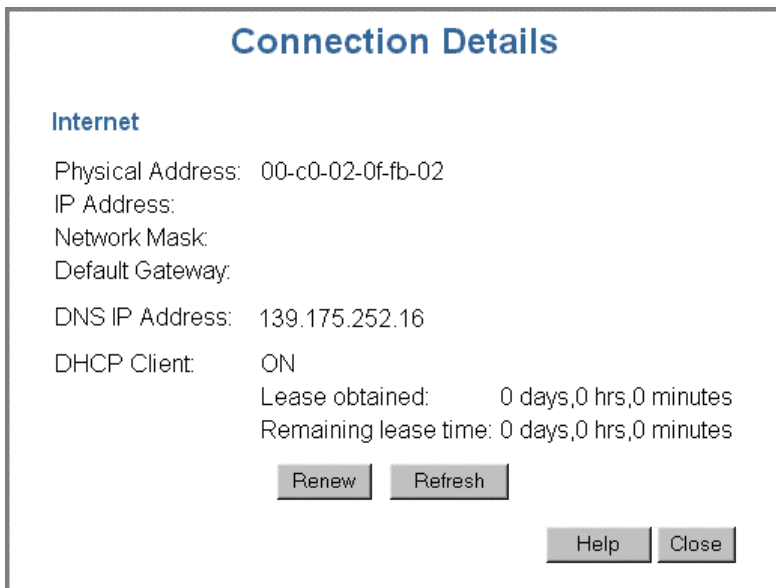


Figure 29: Connection Status Screen

Data - Connection Details Screen

Internet	
Physical Address	The hardware address of this device, as seen by remote devices on the Internet. (This is different to the hardware address seen by devices on the local LAN.)
IP Address	The IP Address of this device, as seen by Internet users. This address is allocated by your ISP (Internet Service Provider).
Network Mask	The Network Mask associated with the IP Address above.
Default Gateway	The IP Address of the remote Gateway or Router associated with the IP Address above.
DNS IP Address	The IP Address of the Domain Name Server which is currently used.

DHCP Client	<p>This will show "Enabled" or "Disabled", depending on whether or not this device is functioning as a DHCP client.</p> <p>If "Enabled" the "Remaining lease time" field indicates when the IP Address allocated by the DHCP Server will expire. The lease is automatically renewed on expiry; use the "Renew" button if you wish to manually renew the lease immediately.</p>
Buttons	
Release/Renew Button will display EITHER "Release" OR "Renew"	<p>This button is only useful if the IP address shown above is allocated automatically on connection. (Dynamic IP address). Otherwise, it has no effect.</p> <ul style="list-style-type: none">• If the ISP's DHCP Server has NOT allocated an IP Address for the DSL/Cable Router, this button will say "Renew". Clicking the "Renew" button will attempt to re-establish the connection and obtain an IP Address from the ISP's DHCP Server.• If an IP Address has been allocated to the DSL/Cable Router (by the ISP's DHCP Server), this button will say "Release". Clicking the "Release" button will break the connection and release the IP Address.
Refresh	Update the data shown on screen.

Chapter 6

Advanced Features

6

This Chapter explains when and how to use the DSL/Cable Router's "Advanced" Features.

Overview

All advanced features are accessed via the **Advanced** menu. The following advanced features are provided.

- Special Applications
- DMZ
- Virtual Servers
- Dynamic DNS
- Remote Management
- Access Control
- Firmware Upgrade using your Web Browser

This chapter contains details of the configuration and use of each of these features.

Note: The screens shown below are identical for all SpeedStream DSL/Cable Routers; therefore, some screenshots are shared between multiple user manuals.

Advanced Internet Screen

This screen allows configuration of all advanced features relating to Internet access.

- Conferencing and Telephony applications
- Special Applications
- DMZ
- URL filter

An example screen is shown below.

Advanced Internet

Conferencing & Telephony Select an Application: AOE
H323(CUseeME & MS NetMeeting & TGI Phone)
ICU II (ICU 2)
Internet Phone

Send incoming calls to: Select a PC

Save when finished, not after each change.

Special Applications If an application does not work, you can define it as a Special Application.

Special Applications

DMZ Enable [DMZ](#), using Select a PC

My PC is not listed

URL Filter Enable [URL Filter](#)

Configure URL Filter

Save Cancel Help

Figure 30: Advanced Internet Screen

Conferencing & Telephony

Most applications are supported transparently by the DSL/Cable Router. But sometimes it is not clear which PC should receive an incoming connection. This problem could arise with the following *Conferencing & Telephony* applications:

- CUseeME
- ICQ
- ICU II (ICU 2)
- Internet Phone
- mIRC
- MS NetMeeting
- Yahoo Messenger

If this problem arises, you can use this screen to set which PC should receive an incoming connection, as described below.

Conferencing & Telephony

Select an Application

This lists applications which may generate incoming connections, where the destination (on your local LAN) is unknown.

Send incoming calls to

This lists the PCs on your LAN.

- For each application listed above, you can choose a destination PC.
- If necessary, you can add PCs manually, using the *Network Clients* option on the advanced menu.
- There is no need to "Save" after each change; you can set the destination PC for each application, then click "Save".

Special Applications

If you use Internet applications which use non-standard connections or port numbers, you may find that they do not function correctly because they are blocked by the DSL/Cable Router's firewall. In this case, you can define the application as a "Special Application".

Special Applications Screen

This screen can be reached by clicking the *Special Applications* button on the *Internet* screen.

You can then define your Special Applications. You will need detailed information about the application; this is normally available from the supplier of the application.

Also, note that the terms "Incoming" and "Outgoing" on this screen refer to traffic from the client (PC) viewpoint

Special Applications

Special Applications can only be used by 1 user at any time.

	On	Name	Incoming Ports			Outgoing Ports		
			Type	Start	Finish	Type	Start	Finish
1.	<input type="checkbox"/>	<input type="text"/>	TCP ▾	<input type="text"/>	<input type="text"/>	TCP ▾	<input type="text"/>	<input type="text"/>
2.	<input type="checkbox"/>	<input type="text"/>	TCP ▾	<input type="text"/>	<input type="text"/>	TCP ▾	<input type="text"/>	<input type="text"/>
3.	<input type="checkbox"/>	<input type="text"/>	TCP ▾	<input type="text"/>	<input type="text"/>	TCP ▾	<input type="text"/>	<input type="text"/>
4.	<input type="checkbox"/>	<input type="text"/>	TCP ▾	<input type="text"/>	<input type="text"/>	TCP ▾	<input type="text"/>	<input type="text"/>
5.	<input type="checkbox"/>	<input type="text"/>	TCP ▾	<input type="text"/>	<input type="text"/>	TCP ▾	<input type="text"/>	<input type="text"/>
6.	<input type="checkbox"/>	<input type="text"/>	TCP ▾	<input type="text"/>	<input type="text"/>	TCP ▾	<input type="text"/>	<input type="text"/>

Figure 31: Special Applications Screen

Data - Special Applications Screen

Checkbox	Use this to Enable or Disable this Special Application as required.
Name	Enter a descriptive name to identify this Special Application.
Incoming Ports	<ul style="list-style-type: none"> • Type - Select the protocol (TCP or UDP) used when you receive data from the special application or service. (Note: Some applications use different protocols for outgoing and incoming data). • Start - Enter the beginning of the range of port numbers used by the application server, for data you receive. If the application uses a single port number, enter it in both the "Start" and "Finish" fields. • Finish - Enter the end of the range of port numbers used by the application server, for data you receive.
Outgoing Ports	<ul style="list-style-type: none"> • Type - Select the protocol (TCP or UDP) used when you send data to the remote system or service. • Start - Enter the beginning of the range of port numbers used by the application server, for data you send to it. If the application uses a single port number, enter it in both the "Start" and "Finish" fields. • Finish - Enter the end of the range of port numbers used by the application server, for data you send to it. If the application uses a single port number, enter it in both the "Start" and "Finish" fields.

Using a Special Application

- Configure the *Special Applications* screen as required.
- On your PC, use the application normally. Remember that only one (1) PC can use each Special application at any time. Also, when 1 PC is finished using a particular Special Application, there may need to be a "Time-out" before another PC can use the same Special Application. The "Time-out" period may be up to 3 minutes.



Note!

If an application still cannot function correctly, try using the "DMZ" feature.

DMZ

This feature, if enabled, allows one (1) computer on your LAN to be exposed to all users on the Internet, allowing unrestricted 2-way communication between the "DMZ PC" and other Internet users or Servers.

- This allows almost any application to be used on the "DMZ PC".
- The "DMZ PC" will receive all "Unknown" connections and data.
- If the DMZ feature is enabled, you must select the PC to be used as the "DMZ PC".
- The DMZ feature can be Enabled and Disabled on the *Advanced Internet* screen.

**Note!**

The "DMZ PC" is effectively outside the Firewall, making it more vulnerable to attacks. For this reason, you should only enable the DMZ feature when required.

URL Filter

The URL Filter allows you to block access to undesirable Web sites.

- To use this feature, you must define "filter strings". If the "filter string" appears in a requested URL, the request is blocked.
- Enabling the *URL Filter* also affects the *Internet Access Log*. If Enabled, the "Destination" field in the log will display the URL. Otherwise, it will display the IP Address.
- The *URL Filter* can be Enabled or Disabled on the *Advanced Internet* screen.

URL Filter Screen

Click the "Configure URL Filter" button on the *Internet* screen to access the *URL Filter* screen. An example screen is shown below.

Figure 32: URL Filter Screen

Data - URL Filter Screen

Filter Strings	
Current Entries	This lists any existing entries. If you have not entered any values, this list will be empty.

Add Filter String	To add an entry to the list, enter it here, and click the "Add" button. An entry may be a Domain name (e.g. www.trash.com) or simply a string. (e.g. ads/) Any URL which contains ANY entry ANYWHERE in the URL will be blocked.
--------------------------	---

Buttons

Delete/Delete All	Use these buttons to delete the selected entry or all entries, as required. Multiple entries can be selected by holding down the CTRL key while selecting.(On the Macintosh, hold the SHIFT key while selecting.)
--------------------------	--

Add	Use this to add the current Filter String to the site list.
------------	---

Virtual Servers

This feature allows you to make Servers on your LAN accessible to Internet users. Normally, Internet users would not be able to access a server on your LAN because:

- Your Server does not have a valid external IP Address.
- Attempts to connect to devices on your LAN are blocked by the firewall in this device.

The "Virtual Server" feature solves these problems and allows Internet users to connect to your servers, as illustrated below.

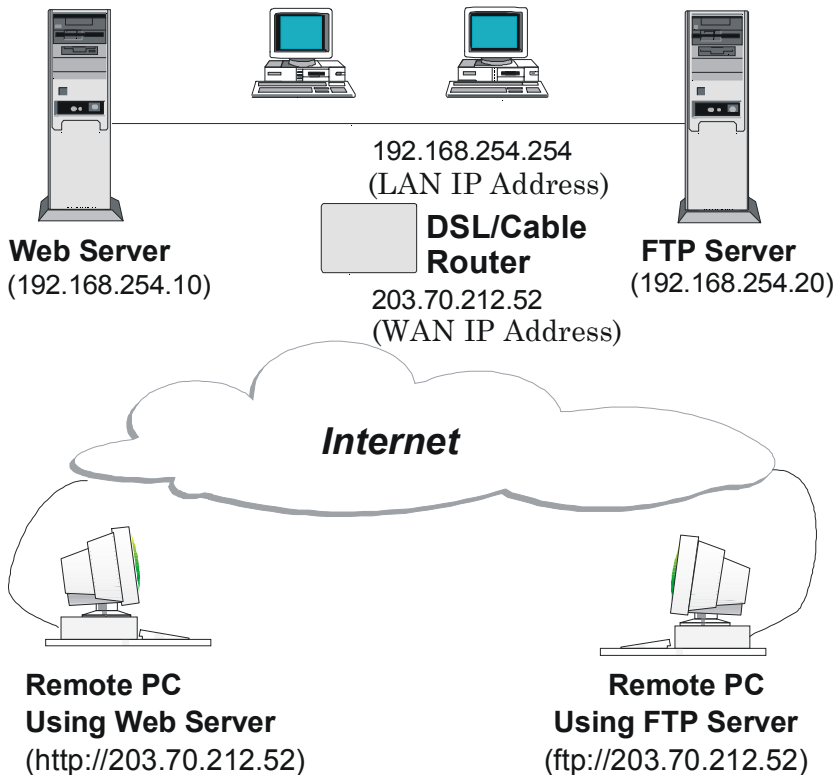


Figure 33: Virtual Servers

IP Address seen by Internet Users

Note that, in this illustration, both Internet users are connecting to the same IP Address, but using different protocols.

To Internet users, all virtual Servers on your LAN have the same IP Address. This IP Address is allocated by your ISP.

This address should be static, rather than dynamic, to make it easier for Internet users to connect to your Servers.

However, you can use the *DDNS (Dynamic DNS)* feature to allow users to connect to your Virtual Servers using a URL, instead of an IP Address.

Virtual Servers Screen

The *Virtual Servers* screen is reached by the *Virtual Servers* link on the *Advanced* screen. An example screen is shown below.

Figure 34: Virtual Servers Screen

This screen lists a number of pre-defined Servers, and allows you to define your own Servers. Details of the selected Server are shown in the "Properties" area.

Data - Virtual Servers Screen

Servers	
Servers	This lists a number of pre-defined Servers, plus any Servers you have defined. Details of the selected Server are shown in the "Properties" area.
Properties	
Enable	Use this to Enable or Disable support for this Server, as required. <ul style="list-style-type: none"> If Enabled, any incoming connections will be forwarded to the selected PC. If Disabled, any incoming connection attempts will be blocked.
PC (Server)	Select the PC for this Server. The PC must be running the appropriate Server software.
Protocol	Select the protocol (TCP or UDP) used by the Server.
Internal Port No.	Enter the port number which the Server software is configured to use.

External Port No.	The port number used by Internet users when connecting to the Server. This is normally the same as the Internal Port Number. If it is different, this device will perform a "mapping" or "translation" function, allowing the server to use one port address, while clients use a different port address.
Buttons	
Defaults	This will delete any Servers you have defined, and set the pre-defined Servers to use their default port numbers.
Disable All	This will cause the "Enable" setting of all Virtual Servers to be set OFF.
Add	Add a new entry to the Virtual Server list, using the data shown in the "Properties" area on screen. The entry selected in the list is ignored, and has no effect.
Update	Update the current Virtual Server entry, using the data shown in the "Properties" area on screen.
Delete	Delete the current Virtual Server entry. Note that the pre-defined Servers can not be deleted. Only Servers you have defined yourself can be deleted.
Clear Form	Clear all data from the "Properties" area, ready for input of a new Virtual Server entry.
Show All	List all entries in the Virtual Server database. The list will be in new window, allowing saving or printing of this data.

**Note!**

For each entry, the PC must be running the appropriate Server software.

Defining your own Virtual Servers

If the type of Server you wish to use is not listed on the *Virtual Servers* screen, you can define and manage your own Servers:

Create a new Server:

1. Click "Clear Form"
2. Enter the required data, as described above.
3. Click "Add".
4. The new Server will now appear in the list.

Modify (Edit) a Server:

1. Select the desired Server from the list
2. Make any desired changes (for example, change the Enable/Disable setting).
3. Click "Update" to save changes to the selected Server.

Delete a Server:

1. Select the entry from the list.
2. Click "Delete".

Note: You can only delete Servers you have defined. Pre-defined Server cannot be deleted.

View all Settings of all Servers

Click the "Show All" button. This will generate a report in a new window, where it can be printed or saved, as well as viewed.



From the Internet, ALL Virtual Servers have the IP Address allocated by your ISP.

Connecting to the Virtual Servers

Once configured, anyone on the Internet can connect to your Virtual Servers. They must use the Internet IP Address (the IP Address allocated to you by your ISP).

e.g.

`http://203.70.212.52`

`ftp://203.70.212.52`

It is more convenient if you are using a Fixed IP Address from your ISP, rather than Dynamic. However, you can use the *Dynamic DNS* feature, described in the following section, to allow users to connect to your Virtual Servers using a URL, rather than an IP Address.

Dynamic DNS

This free service is very useful when combined with the *Virtual Server* feature. It allows Internet users to connect to your Virtual Servers using a URL, rather than an IP Address.

This also solves the problem of having a dynamic IP address. With a dynamic IP address, your IP address may change whenever you connect, which makes it difficult to connect to you.

The Service works as follows:

1. You must register for the service at <http://www.dyndns.org> (Registration is free). Your password will be E-mailed to you.
2. After registration, use the "Create New Host" option (at www.dyndns.org) to request your desired Domain name.
3. Enter your data from www.dyndns.org in the DSL/Cable Router's DDNS screen.
4. The DSL/Cable Router will then automatically ensure that your current IP Address is recorded at <http://www.dyndns.org>
5. From the Internet, users will be able to connect to your Virtual Servers (or DMZ PC) using your Domain name, as shown on this screen.

Dynamic DNS Screen

Select *Advanced* on the main menu, then *Dynamic DNS*, to see a screen like the following:

DDNS (Dynamic DNS)

DDNS Service Dynamic DNS allows you to provide Internet users with a domain name (instead of an IP Address) to access your Virtual Servers.

Register for this FREE service at <http://www.dyndns.org>

DDNS Data User name is set when you register; your password is E-mailed to you.

User Name:

Password:

Domain Name: .dyndns.org
(Allocated to you by www.dyndns.org)

DDNS Status:

Figure 35: DDNS Screen

Data - Dynamic DNS Screen

DDNS Service	
DDNS Service	<ul style="list-style-type: none"> You must sign up first to create a new account before using the service. The service is free. Click this link to connect to the www.dyndns.org Web site. Your initial password will be E-mailed to you; you can change this later if you wish. After registration, use the "Create New Host" link (on the www.dyndns.org Web site) to request a domain name.
DDNS Data	
User Name	Enter the "User name" specified at the www.dyndns.org Web site when you registered.
Password	Enter your current password for www.dyndns.org
Domain	<ul style="list-style-type: none"> Enter your domain name, as allocated at www.dyndns.org. The name should consist only of letters and the hyphen (dash). Using any other characters may cause problems..
DDNS Status	<p>This message is returned by the DDNS Server at www.dyndns.org</p> <ul style="list-style-type: none"> Normally, this message should be "Update successful" (current IP address was updated on the www.dyndns.org server). If the message is "No host", this indicates the host name entered was not allocated to you. You need to connect to www.dyndns.org and correct this problem.

Remote Management

This feature allows you to manage the DSL/Cable Router via the Internet. An example screen is shown below.

Remote Management

If enabled, this device can be administered via the Internet, using your Web Browser. See help for details of the "Port Number".

Enable Remote Management

Port Number:

Current IP Address to connect to this device:

Figure 36: Remote Management Screen

Data - Remote Management Screen

Remote Management	
Enable Remote Management	Enable to allow management via the Internet. If Disabled, this device will ignore management connection attempts from the Internet.
Port Number	<p>Enter a port number between 1024 and 65535 (8080 is recommended). This port number must be specified when you connect (see below).</p> <p>Note: The default port number for HTTP (Web) connections is port 80, but using port 80 here will prevent the use of a Web "Virtual Server" on your LAN. (See <i>Advanced Internet - Virtual Servers</i>)</p>
Current IP Address	<p>You must use this IP Address to connect (see below).</p> <p>This IP Address is allocated by your ISP. But if using a Dynamic IP Address, this value can change each time you connect to your ISP. So it is better if your ISP allocates you a Fixed IP Address.</p>

To connect from a remote PC via the Internet

1. Ensure your Internet connection is established, and start your Web Browser.
2. In the "Address" bar, enter "HTTP://" followed by the Internet IP Address of the DSL/Cable Router. If the port number is not 80, the port number is also required. (After the IP Address, enter ":" followed by the port number.)

e.g.

HTTP://123.123.123.123:8080

This example assumes the WAN IP Address is 123.123.123.123, and the port number is 8080.

Access Control

This feature is accessed by the *Access Control* link on the Advanced menu.

Overview

The Access Control feature allows administrators to restrict Internet Access by individual PCs. With the default settings, everyone has unrestricted Internet access.

To use this feature:

1. Set the desired restrictions on the "Default" group. All PCs are in the "Default" group unless explicitly moved to another group.
2. Set the desired restrictions on the other groups ("Group 1", "Group 2", "Group 3" and "Group 4") as needed.
3. Assign PCs to the groups as required.



Note!

Restrictions are imposed by blocking "Services", or types of connections. All common Services are pre-defined. If required, you can also define your own Services.

Access Control Log

To check the operation of the Access Control feature, an *Access Control Log* is provided. Click the *View Log* button on the *Access Control* screen to view this log.

This log shows attempted Internet accesses which have been **blocked** by the *Access Control* function.

Data shown in this log is as follows:

Date/Time	Date and Time of the attempted access.
Name	If known, the name of the PC whose access was blocked. This name is taken from the <i>Network Clients</i> database
Source IP address	The IP Address of the PC or device whose access request was blocked
MAC address	The hardware or physical address of the PC or device whose access request was blocked
Destination	The destination URL or IP address

Access Control Screen

To view this screen, select the *Access Control* link on the Advanced menu.

The screenshot shows the 'Access Control' configuration screen. It has three main sections: 'Group', 'Access Rights', and 'Services'.
 - **Group:** A dropdown menu is set to 'Group 1' with a 'Members' button next to it.
 - **Access Rights:** Under the heading 'Internet Access for this Group:', there are three radio button options: 'No restrictions' (selected), 'Block all Access', and 'Use list below - block selected Services'.
 - **Services:** A list box titled 'Defined Services' contains the following items: AIM(TCP:5190), BGP(TCP:179), BOOTP_CLIENT(UDP:68), BOOTP_SERVER(UDP:67..68), CU-SEEME(TCP/UDP:7648), DNS(TCP/UDP:53), FINGER(TCP:79), and FTP(TCP:20..21). To the right of the list is a 'Services' button.
 - Below the list box, it says 'Hold CTRL key (on MAC, SHIFT) to select multiple items' and 'Selected Services are blocked !'.
 - At the bottom, there are buttons for 'Save', 'Cancel', 'Help', 'View Log', and 'Clear Log'.

Figure 37: Access Control Screen

Data - Access Control Screen

Group	
Select Group	Select the desired Group. The screen will update to display the settings for the selected Group. Groups are named "Default", "Group 1", "Group 2", "Group 3" and "Group 4", and cannot be re-named.
"Members" Button	Click this button to add or remove members from the current Group. If the current group is "Default", then members can not be added or deleted. This group contains PCs not allocated to any other group. See the following section for details of the <i>Group Members</i> screen.
Access Rights	
Internet Access	Select the desired options for the current group, as detailed below.
No Restriction	Nothing is blocked. Use this to create the least restrictive group.
Block All Access	All traffic via the WAN port is blocked. Use this to create the most restrictive group.

Use List Below - block Selected Services	You can select which Services are allowed, and which are blocked. Use this to gain fine control over a group.
Services	
Defined Services	Select the applications you wish to block. Multiple Services can be selected by holding the CTRL key (on the Macintosh, the SHIFT key) while selecting. Selected Services are blocked.
"Services" button	Click this to open the <i>Services</i> window, allowing you to define your own Services. See the following section for details of the <i>Services</i> screen.
Buttons	
Members	Click this button to add or remove members from the current Group. If the current group is "Default", then members can not be added or deleted. This group contains PCs not allocated to any other group. See the following section for details of the <i>Group Members</i> screen.
Service	Click this button to add or remove services from the current list.
Save	Save the data on screen.
Cancel	Reverse any changes made since the last "Save".
View Log	See all the details in the Log.
Clear Log	Delete all data currently in the Log. This will make it easier to read new entries.

Group Members Screen

This screen is displayed when the *Members* button on the *Access Control* screen is clicked.

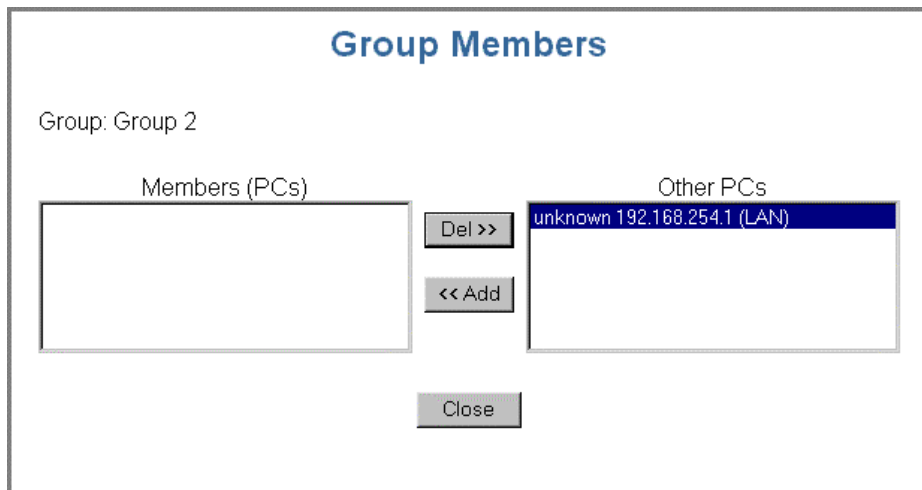


Figure 38: Group Members

Use this screen to add or remove members (PCs) from the current group.

- The "Del >>" button will remove the selected PC (in the *Members* list) from the current group.
- The "<< Add" button will add the selected PC (in the *Other PCs* list) to the current group.



PCs not assigned to any group will be in the "Default" group.
PCs deleted from any other Group will be added to the "Default" group.

Services Screen

This screen is displayed when the *Services* button on the *Access Control* screen is clicked.

Figure 39: Services

Data - Services Screen

Available Services	
Available Services	This lists all the available services.
"Delete" button	Use this to delete any Service you have added. Pre-defined Services can not be deleted.
Add New Service	
Name	Enter a descriptive name to identify this service.
Type	Select the protocol (TCP, UDP, ICMP) used to the remote system or service.
Start Port	For TCP and UDP Services, enter the beginning of the range of port numbers used by the service. If the service uses a single port number, enter it in both the "Start" and "Finish" fields.
Finish Port	For TCP and UDP Services, enter the end of the range of port numbers used by the service. If the service uses a single port number, enter it in both the "Start" and "Finish" fields.
ICMP Type	For ICMP Services, enter the type number of the required service.
Buttons	
Delete	Delete the selected service from the list.
Add	Add a new entry to the Service list, using the data shown in the "Add

	New Service" area on screen.
Cancel	Clear the " Add New Service " area, ready for entering data for a new Service.

Firmware Upgrade

The firmware (software) in the DSL/Cable Router can be upgraded using your Web Browser. You must first download the upgrade file, then select *Upgrade* on the Advanced menu. You will see a screen like the following.

Figure 40: Upgrade Firmware

To perform the Firmware Upgrade:

1. Click the "Browse" button and navigate to the location of the upgrade file.
2. Select the upgrade file. It's name will appear in the *Upgrade File* field.
3. Click the "Start Upgrade" button to commence the firmware upgrade.



Note!

The DSL/Cable Router is unavailable during the upgrade process, and must restart when the upgrade is completed. Any connections to or through the DSL/Cable Router will be lost.

Chapter 7

Advanced Configuration



This Chapter explains the settings available via the Advanced configuration section of the "Advanced" menu.

Overview

Normally, it is not necessary to use these screens, or change any settings. These screens and settings are provided to deal with non-standard situations, or to provide additional options for advanced users.

The settings available are:

Network Clients	This is the list of PCs shown when you select the "DMZ PC" or a "Virtual Server". This database is maintained automatically, but you can add and delete entries for PCs which use a Fixed (Static) IP Address.
Options	Various options, including DNS and UPnP.
Printer	Configure Logical Printers for use under Unix
MAC Address	Set the MAC (hardware) address used on the Internet (WAN port) interface. This is required only if your ISP has recorded the MAC (hardware) address you should use.
Routing	Only required if your LAN has other Routers or Gateways.
Security	Firewall settings.

Note: The screens shown below are identical for all SpeedStream DSL/Cable Routers; therefore, some screenshots are shared between multiple user manuals.

Network Clients Screen

The *Network Clients* database is used whenever you need to select a PC (e.g. for the "DMZ" PC). It eliminates the need to enter IP addresses. An example *Network Clients* screen is shown below.

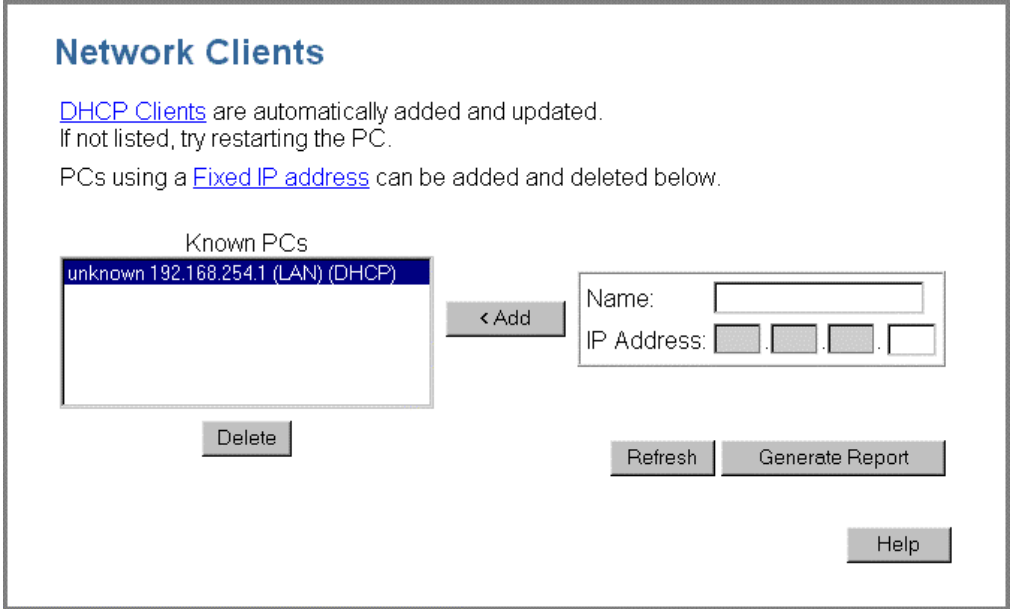


Figure 41: Network Clients Screen

- PCs which are "DHCP Clients" are automatically added to the database, and updated as required.
- By default, non-Server versions of Windows act as "DHCP Clients"; this setting is called "Obtain an IP Address automatically".
- The DSL/Cable Router uses the "Hardware Address" to identify each PC, not the name or IP address. The "Hardware Address" can only change if you change the PC's network card or adapter.
- This system means you do NOT need to use Fixed (static) IP addresses on your LAN. However, you can add PCs using Fixed (static) IP Addresses to the *Network Clients* database if required.

Data - Network Clients Screen

Network Clients	
Known PCs	This lists all current entries. Data displayed is <i>name (IP Address) type</i> . For this model, the "type" will either be "LAN" or "WLAN" (Wireless LAN).
Name	If adding a new PC to the list, enter its name here. It is best if this matches the PC's "hostname".
IP Address	Enter the IP Address of the PC. The PC will be sent a "ping" to determine its hardware address. If the PC is not available (not connected, or not powered On) you will not be able to add it.

Buttons	
Add	This will add the new PC to the list. The PC will be sent a "ping" to determine its hardware address. If the PC is not available (not connected, or not powered On) you will not be able to add it.
Delete	Delete the selected PC from the list. This should be done in 2 situations: <ul style="list-style-type: none">• The PC has been removed from your LAN.• The entry is incorrect.
Refresh	Update the data on screen.
Generate Report	Display a read-only list showing full details of all entries in the <i>Network Clients</i> database.

Options

This screen allows advanced users to enter or change a number of settings. For normal operation, there is no need to use this screen or change any settings. An example Options screen is shown below.

Options

Backup DNS

Backup DNS (1) IP Address:

Backup DNS (2) IP Address:

These DNS (Domain Name Servers) are used only if the primary DNS is unavailable.

TFTP

Enable Firmware Upgrade using TFTP

UPnP

Enable UPnP Services

Allow configuration changes through UPnP

Allow Internet access to be disabled

Figure 42: Options Screen

Data - Options Screen

Backup DNS	
IP Address	Enter the IP Address of the DNS (Domain Name Servers) here. These DNS will be used only if the primary DNS is unavailable.
TFTP	
Enable Firmware Upgrade using TFTP	<ul style="list-style-type: none"> If enabled, TFTP (Trivial FTP) can be used to upgrade the firmware in this device. This is normally not required; a Windows utility is available for this purpose. You must obtain the firmware upgrade file first; instructions for using TFTP will be available with the upgrade.
UPnP	
Enable UPnP Services	<ul style="list-style-type: none"> UPnP (Universal Plug and Play) allows automatic discovery and configuration of equipment attached to your LAN. UPnP is by supported by Windows ME, XP, or later. If Enabled, this device will be visible via UPnP. If Disabled, this device will not be visible via UPnP.
Allow Configuration...	<ul style="list-style-type: none"> If checked, then UPnP users can change the configuration. If Disabled, UPnP users can only view the configuration.

**Allow Internet
access to be
disabled**

- If checked, then UPnP users can disable Internet access via this device.
 - If Disabled, UPnP users can NOT disable Internet access via this device.
-

Printer Port

Printer Port configuration is only required if using LPD printing under Linux or Unix. Otherwise, these settings are ignored.

Under LPD, the DSL/Cable Router supports 3 "Logical Printers".

Printer

Unix

Logical Printers

	Pre-string (HEX)	Post-string (HEX)	LF to CR/LF
L1	<input type="text"/>	<input type="text"/>	<input type="checkbox"/> Enable
L2	<input type="text"/>	<input type="text"/>	<input type="checkbox"/> Enable
L3	<input type="text"/>	<input type="text"/>	<input type="checkbox"/> Enable

Windows For Windows, no setup is required.

Figure 43: Printer Port Screen

Logical Printers	
No (L1, L2, L3)	There are 3 Logical Printers (Ports), named L1, L2, and L3. These names can not be changed, and must be used when selecting the logical printer from your Unix system.
Pre-string (HEX)	Enter (in HEX) the series of printer commands to be sent to the attached printer BEFORE each print job.
Post-string (HEX)	Enter (in HEX) the series of printer commands to be sent to the attached printer AFTER each print job.
LF to CR/LF	If checked, Unix-style LF (line feed) characters at the end of each line will be converted to CR/LF (carriage return/line feed) pairs, as used in MSDOS and Windows.

MAC Address

The MAC (hardware) address is a low-level network identifier. It may be called "MAC Address", "Hardware Address", or "Physical Address". On a PC, this address is associated with the Network card or adapter. The address on the *MAC Address* screen is the address on the Internet (WAN port) interface, and has no effect on the LAN interface.

- If your ISP asks for the "Network Adapter Address", "Physical Address", "Hardware Address", or "MAC Address" for the PC the DSL/Cable modem is connected to, provide this value.
- If your ISP has already recorded a MAC address, you can change the address used by the DSL/Cable Router to match the address recorded by your ISP.

MAC Address Screen

Select *MAC Address* from the *Advanced* menu to reach a screen like the example below.

Figure 44: MAC address screen

Data - MAC address Screen

MAC (hardware) Address	The current MAC (hardware) address is displayed. If your ISP has recorded a Hardware Address, you can "spoof" that address by entering it in the address field. The hardware address consists of 12 characters, where each character is a digit (0..9) or a character between A and F.
Buttons	
Default	Inserts the default MAC address into the MAC address field. You must click "Save" to actually change the address used.
Clone MAC Address	Inserts the MAC address from your PC into the MAC address field. You must click "Save" to actually change the address used.
Save	Save your changes to the DSL/Cable Router.
Cancel	Reverse any changes made since the last "Save".



If the MAC address is changed, the DSL/Cable Router must be restarted.

Routing

Overview

- If you don't have other Routers or Gateways on your LAN, you can ignore the "Routing" page completely.
- If the DSL/Cable Router is only acting as a Gateway for the local LAN segment, ignore the "Routing" page even if your LAN has other Routers.
- If your LAN has a standard Router (e.g. Cisco) on your LAN, and the DSL/Cable Router is to act as a Gateway for all LAN segments, enable RIP (Routing Information Protocol) and ignore the Static Routing table.
- If your LAN has other Gateways and Routers, and you wish to control which LAN segments use each Gateway, do NOT enable RIP (Routing Information Protocol). Configure the Static Routing table instead. (You also need to configure the other Routers.)
- If using Windows 2000 Data center Server as a software Router, enable RIP on the DSL/Cable Router, and ensure the following Windows 2000 settings are correct:
 - Open *Routing and Remote Access*
 - In the console tree, select *Routing and Remote Access*, [server name], *IP Routing*, *RIP*
 - In the "Details" pane, right-click the interface you want to configure for RIP version 2, and then click "Properties".
 - On the "General" tab, set *Outgoing packet protocol* to "RIP version 2 broadcast", and *Incoming packet protocol* to "RIP version 1 and 2".

Routing Screen

The routing table is accessed by the *Routing* link on the *Advanced* screen.

Using this Screen

Generally, you will use either RIP (Routing Information Protocol) OR the Static Routing Table, as explained above, although it is possible to use both methods simultaneously.

Static Routing Table

- If RIP is not used, an entry in the routing table is required for each LAN segment on your Network, other than the segment to which this device is attached.
- The other Routers must also be configured. See *Configuring Other Routers on your LAN* later in this chapter for further details and an example.

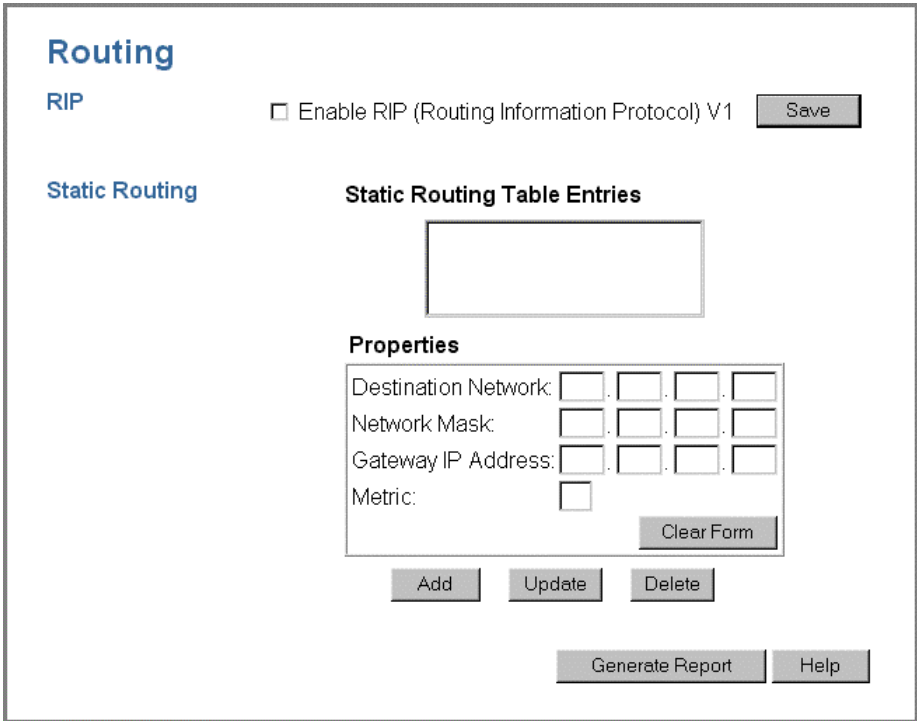


Figure 45: Routing Screen

Data - Routing Screen

RIP	
Enable RIP	<p>Check this to enable the RIP (Routing Information Protocol) feature of the DSL/Cable Router.</p> <p>The DSL/Cable Router supports RIP 1 only.</p>
Static Routing	
Static Routing Table Entries	<p>This list shows all entries in the Routing Table.</p> <ul style="list-style-type: none"> The "Properties" area shows details of the selected item in the list. Change any the properties as required, then click the "Update" button to save the changes to the selected entry.
Properties	<ul style="list-style-type: none"> Destination Network - The network address of the remote LAN segment. For standard class "C" LANs, the network address is the first 3 fields of the Destination IP Address. The 4th (last) field can be left at 0. Network Mask - The Network Mask for the remote LAN segment. For class "C" networks, the default mask is 255.255.255.0 Gateway IP Address - The IP Address of the Gateway or Router which the DSL/Cable Router must use to communicate with the destination above. (NOT the router attached to the remote segment.) Metric - The number of "hops" (routers) to pass through to reach the remote LAN segment. The shortest path will be used. The default value is 1.

Buttons	
Save	Save the RIP setting. This has no effect on the Static Routing Table.
Add	Add a new entry to the Static Routing table, using the data shown in the "Properties" area on screen. The entry selected in the list is ignored, and has no effect.
Update	Update the current Static Routing Table entry, using the data shown in the "Properties" area on screen.
Delete	Delete the current Static Routing Table entry.
Clear Form	Clear all data from the "Properties" area, ready for input of a new entry for the Static Routing table.
Generate Report	Generate a read-only list of all entries in the Static Routing table.

Configuring Other Routers on your LAN

It is essential that all IP packets for devices not on the local LAN be passed to the DSL/Cable Router, so that they can be forwarded to the external LAN, WAN, or Internet. To achieve this, the local LAN must be configured to use the DSL/Cable Router as the *Default Route* or *Default Gateway*.

Local Router

The local router is the Router installed on the same LAN segment as the DSL/Cable Router. This router requires that the *Default Route* is the DSL/Cable Router itself. Typically, routers have a special entry for the *Default Route*. It should be configured as follows.

Destination IP Address	Normally 0.0.0.0, but check your router documentation.
Network Mask	Normally 0.0.0.0, but check your router documentation.
Gateway IP Address	The IP Address of the DSL/Cable Router.
Metric	1

Other Routers on the Local LAN

Other routers on the local LAN must use the DSL/Cable Router's *Local Router* as the *Default Route*. The entries will be the same as the DSL/Cable Router's local router, with the exception of the *Gateway IP Address*.

- For a router with a direct connection to the DSL/Cable Router's local Router, the *Gateway IP Address* is the address of the DSL/Cable Router's local router.
- For routers which must forward packets to another router before reaching the DSL/Cable Router's local router, the *Gateway IP Address* is the address of the intermediate router.

Static Routing - Example

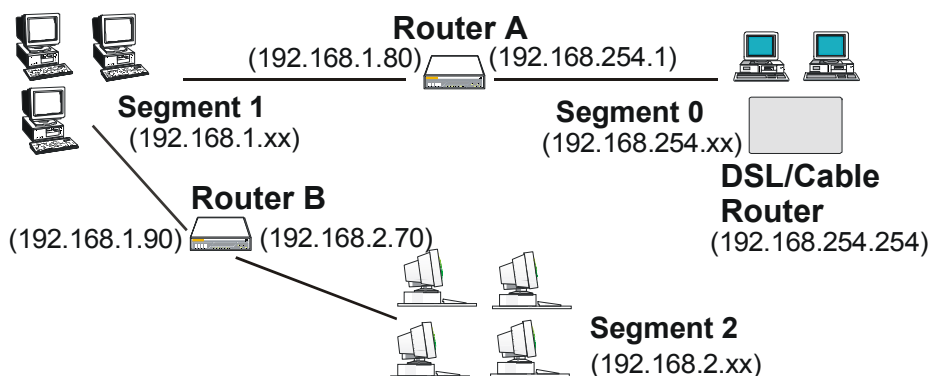


Figure 46: Routing Example

For the DSL/Cable Router's Routing Table

For the LAN shown above, with 2 routers and 3 LAN segments, the DSL/Cable Router requires 2 entries as follows.

Entry 1 (Segment 1)	
Destination IP Address	192.168.1.0
Network Mask	255.255.255.0 (Standard Class C)
Gateway IP Address	192.168.254.1 (DSL/Cable Router's local Router)
Metric	1
Entry 2 (Segment 2)	
Destination IP Address	192.168.2.0
Network Mask	255.255.255.0 (Standard Class C)
Gateway IP Address	192.168.254.1 (DSL/Cable Router's local Router)
Metric	2

For Router A's Default Route

Destination IP Address	0.0.0.0
Network Mask	0.0.0.0
Gateway IP Address	192.168.254.254 (DSL/Cable Router's IP Address)

For Router B's Default Route

Destination IP Address	0.0.0.0
Network Mask	0.0.0.0
Gateway IP Address	192.168.254.254 (DSL/Cable Router's local router)

Security

The security screen is accessed by the *Security* option on the Advanced menu.

Security

Firewall Enable DoS (Denial of Service) Firewall

Threshold: High (WAN bandwidth > 2 Mbps)

Medium (WAN bandwidth 1 - 2 Mbps)

Low (WAN bandwidth < 1 Mbps)

If Enabled (recommended), invalid packets and connections are dropped.
The "Threshold" affects invalid connections only.

ICMP (Ping) Respond to ICMP (ping) on WAN interface

Figure 47: Security Screen

Data - Security Screen

Firewall	
Enable DoS Firewall	<p>If enabled, DoS (Denial of Service) attacks will be detected and blocked. The default is enabled. It is strongly recommended that this setting be left enabled.</p> <p>Note:</p> <ul style="list-style-type: none"> • A DoS attack does not attempt to steal data or damage your PCs, but overloads your Internet connection so you can not use it - the service is unavailable. • The DSL/Cable Router uses "Stateful Inspection" technology. This system can detect situations where individual TCP/IP packets are valid, but collectively they become a DoS attack.
Threshold	<p>This setting affects the number of "half-open" connections allowed.</p> <ul style="list-style-type: none"> • A "half-open" connection arises when a remote client contacts the Server with a connection request, but then does not reply to the Server's response. • While the optimum number of "half-open" connections allowed (the "Threshold") depends on many factors, the most important factor is the available bandwidth of your Internet connection. • Select the setting to match the bandwidth of your Internet connection.

ICMP (Ping)

Respond to ICMP (ping)

The ICMP protocol is used by the "ping" and "traceroute" programs, and by network monitoring and diagnostic programs.

- If checked, the DSL/Cable Router will respond to ICMP packets received from the Internet.
- If not checked, ICMP packets from the Internet will be ignored. Disabling this option provides a slight increase in security.

Appendix A

Troubleshooting



This Appendix covers the most likely problems and their solutions.

Overview

This chapter covers some common problems that may be encountered while using the DSL/Cable Router and some possible solutions to them. If you follow the suggested steps and the DSL/Cable Router still does not function properly, contact your dealer for further advice.

General Problems

Problem 1: **Can't connect to the DSL/Cable Router to configure it.**

Solution 1: Check the following:

- The DSL/Cable Router is properly installed, LAN connections are OK, and it is powered ON. Check the LEDs for port status.
- Ensure that your PC and the DSL/Cable Router are on the same network segment. (If you don't have a router, this must be the case.)
- If your PC is set to "Obtain an IP Address automatically" (DHCP client), restart it.
- If your PC uses a Fixed (Static) IP address, ensure that it is using an IP Address within the range 192.168.254.1 to 192.168.254.253 and thus compatible with the DSL/Cable Router's default IP Address of 192.168.254.254.

Also, the Network Mask should be set to 255.255.255.0 to match the DSL/Cable Router.

In Windows, you can check these settings by using *Control Panel-Network* to check the *Properties* for the TCP/IP protocol.

Internet Access

Problem 1: **When I enter a URL or IP address I get a time out error.**

Solution 1: A number of things could be causing this. Try the following troubleshooting steps.

- Check if other PCs work. If they do, ensure that your PCs IP settings are correct. If using a Fixed (Static) IP Address, check the Network Mask, Default gateway and DNS as well as the IP Address.
- If the PCs are configured correctly, but still not working, check the DSL/Cable Router. Ensure that it is connected and ON. Connect to it and check its settings. (If you can't connect to it, check the LAN and power connections.)
- If the DSL/Cable Router is configured correctly, check your Internet connection (DSL/Cable modem etc) to see that it is working correctly.

Problem 2: **Some applications do not run properly when using the DSL/Cable Router.**

Solution 2: The DSL/Cable Router processes the data passing through it, so it is not transparent.

Use the *Special Applications* feature to allow the use of Internet applications which do not function correctly.

If this does solve the problem you can use the *DMZ* function. This should work with almost every application, but:

- It is a security risk, since the firewall is disabled for the *DMZ* PC.
- Only one (1) PC can use this feature.

Printing

Problem 1: **When I tried to install the Printing software for Peer-to-Peer printing, I received an error message and the installation was aborted..**

Solution 1: This may be caused by an existing installation of the printer port software. Before attempting another installation:

- Remove the existing installation
- Restart your PC

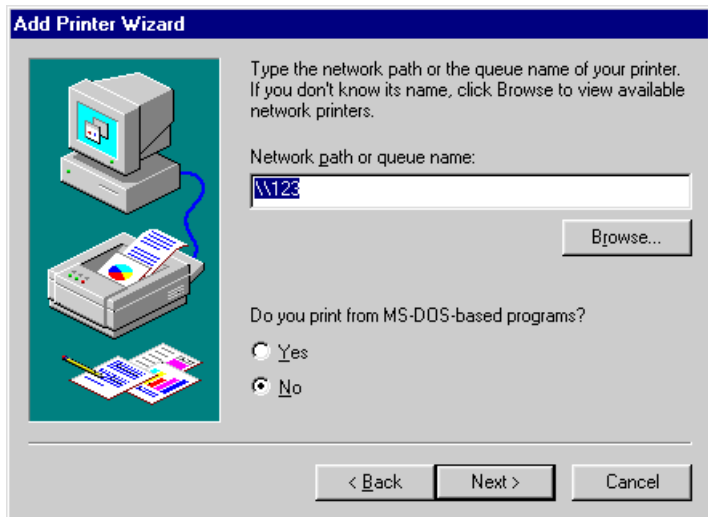
To remove an existing printer port installation:

1. Open *Start - Settings - Control Panel - Add/Remove Programs*
2. Look for an entry with a name like "Shared Port", "Shared Printer Port", "Print Server Driver" or "Print Server Port".
3. Select this item, click "Add/Remove", and confirm the deletion.

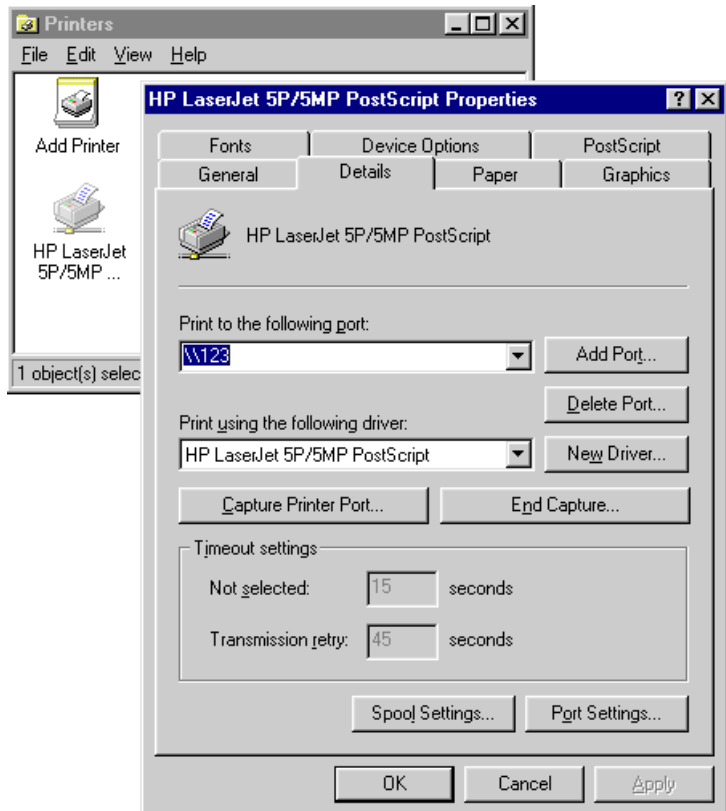
Problem 2: **I am using Windows 95, and the Printing software installed and ran, but when I selected a port on a DSL/Cable Router and clicked "Add", the printer was not installed.**

Solution 2: Try installing the printer using the standard Windows tools, as follows:

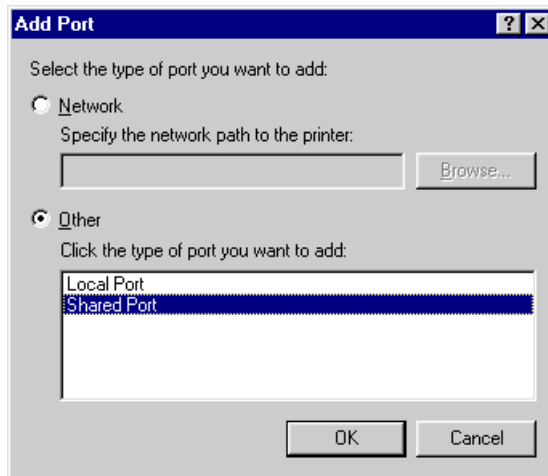
1. Start the *Add Printer Wizard*.
2. Select *Network Printer* when prompted "How is the printer attached to your Computer?", and click Next.
3. When prompted for the Network Path or Queue, enter a dummy value such as \\123, as shown below. (Do NOT select *Yes* for "Do you print for MS-DOS programs?")



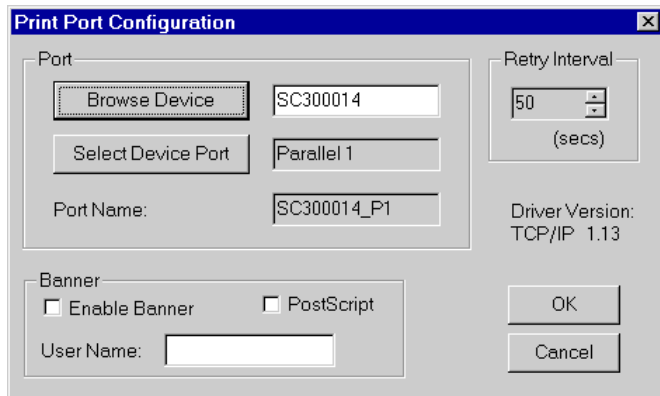
4. The printer wizard will display a message stating that “The Network Printer is off-line”. This is OK. Continue the Add Printer Wizard until finished.
5. When finished, go to *Control Panel-Printers*. The printer icon will be grayed out indicating the printer is not ready.
6. Right-click the Printer, and select *Properties*. Then select the *Details* tab, as shown below.



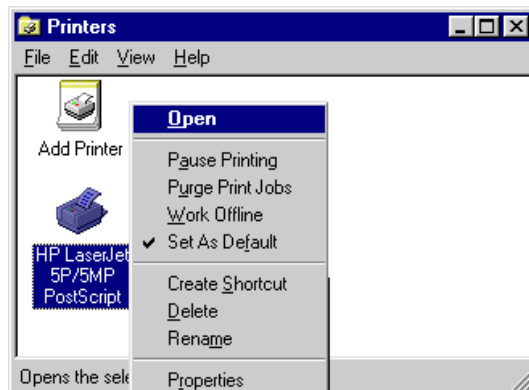
7. Click the *Add Port* button. On the resulting screen, select *Other*, then *Shared Port*, as the port to add, as shown below.



8. Click OK to see the *Print Port Configuration* screen, as shown below.



9. Click the *Browse Device* button, select the device name of the desired DSL/Cable Router, and click OK.
10. Click OK to return to the Printers folders, and right-click on the Printer. Ensure that the *Work off-line* option is NOT checked.



The Printer should no longer be grayed out, and is ready for use.

Appendix B

Specifications



SpeedStream Wireless DSL/Cable Router

Model	SS2624 Wireless DSL/Cable Router
Dimensions	204mm(W) * 127mm(D) * 29mm(H)----Update for new case and put in inches and mm
Operating Temperature	0° C to 40° C
Storage Temperature	-10° C to 70° C
Network Protocol:	NAT, PPPoE, HTTP, DHCP client/server, TCP/IP
Network Interface:	5 Ethernet: 4 * 10/100BaseT (RJ45) auto-Switching Hub ports for LAN devices 1 * 10BaseT (RJ45) for WAN
Printer Port	1 * parallel printer port
LEDs	14
External Power Adapter	12 V DC

Wireless Interface

Standards	IEEE802.11b WLAN, PCMCIA 2.1, JEIDA 4.2
Frequency	2.4 to 2.4835GHz (Industrial Scientific Medical Band)
Channels	Maximum 14 Channels, depending on regulatory authorities
Data Rate	11 / 5.5 / 2 / 1 Mbps
Coverage Area	Closed Space : 25m @11Mbps, 100m @5.5Mbps or lower
Power	DC +3.3V / 220mA
Output Power	13dBm (typical)
Receiver Sensitivity	-80dBm Min.
Operating Temperature	0° to 55°C
Storage Temperature	-25° to 70°C
Relative humidity	10% to 90%

Appendix C

Technical Support



Before contacting technical support, please refer to the previous Troubleshooting information. If you are still unable to resolve the problem, be prepared to provide the following information:

- Model number (SS2624)
- Date of purchase or installation
- Description of problem

SpeedStream Technical Support Services are available 24 hours a day, 7 days a week via the web, e-mail and telephone.

Visit our website at www.SpeedStream.com for the latest product information and support knowledge base.

Contact SpeedStream Support via e-mail at: Support@SpeedStream.com

Telephone Support for North America only: 877-823-6722

Free Manuals Download Website

<http://myh66.com>

<http://usermanuals.us>

<http://www.somanuals.com>

<http://www.4manuals.cc>

<http://www.manual-lib.com>

<http://www.404manual.com>

<http://www.luxmanual.com>

<http://aubethermostatmanual.com>

Golf course search by state

<http://golfingnear.com>

Email search by domain

<http://emailbydomain.com>

Auto manuals search

<http://auto.somanuals.com>

TV manuals search

<http://tv.somanuals.com>