

# Quick Start Guide

How to Install the Supplied Software  
How to Use Your “WALKMAN”



NWZ-F804/F805/F806

©2012 Sony Corporation Printed in Malaysia

**You must accept the terms of the End User License Agreement when you use your Walkman for the first time. To read them again later, tap the [Menu] button - [System settings] - [About device] - [Legal information] - [Sony EULA].**

### About the manuals

In addition to this Quick Start Guide, this model is accompanied by a Help guide (HTML document) that gives detailed operating instructions.

#### To view on your “WALKMAN” screen:

See “How to Use the Help guide on Your “WALKMAN””

#### To view on a computer screen:

See “How to Install the Supplied Software (Including Help guide).”



\* 4 4 3 2 4 5 2 1 1 \* (1)

4-432-452-11(1)

## Contents

Please check the items in the package.

- “WALKMAN” (1)
- Headphones (1)
- Earbuds (Size S, L) (1)
  - At purchase, M size earbuds are installed.
- USB cable (1)
- Attachment (1)
  - Use when connecting your Walkman to a peripheral device, such as a cradle (not supplied).
- Quick Start Guide (this manual)
- Software

The software is stored in the built-in flash memory of your Walkman, and includes the following items. For details on how to install, see “How to Install the Supplied Software (Including Help guide).”

- Media Go
- WALKMAN Guide Help guide, etc.

## About Windows Operating System

Make sure that the OS is Windows XP (Service Pack 3 or later), Windows Vista\* (Service Pack 2 or later) or Windows 7\* (Service Pack 1 or later).

\* [Compatibility mode] for Windows XP is not supported.

## What You Can Do with Your “WALKMAN”

### To enjoy music/videos/photos

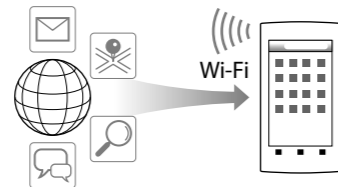


You can transfer music from CDs and transfer videos and photos to your Walkman using a computer.

### To enjoy FM radio

You can listen to FM radio using the supplied headphones.

### To enjoy Internet

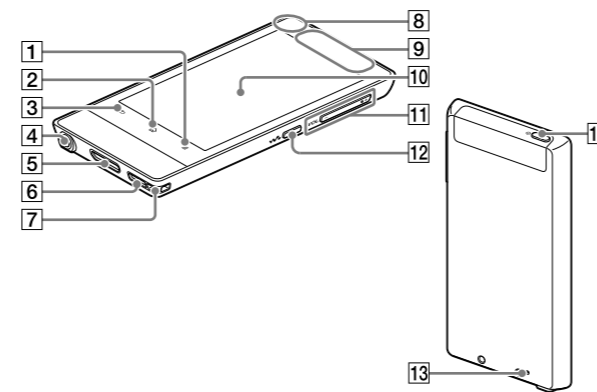


You can browse the Internet and download applications by connecting to a Wi-Fi network.

#### Hint

- For details about this function or usage, refer to the Help guide (HTML document).

## Parts and Controls



**1** [Menu] button

**2** [Home] button

**3** [Back] button

**4** Headphone jack

**5** WM-PORT jack

Connect the USB cable (supplied), or other accessories that support WM-PORT (not supplied).

**6** Speaker

**7** Strap hole

**8** Built-in microphone

**9** Built-in antenna

Wi-Fi, Bluetooth, and GPS antennas are built-in.

**10** Screen (touch screen)

Touch (tap) icons, items, control buttons, etc., on the screen to operate your Walkman.

**11** VOL (Volume) +/- button

**12** [Double-u Dot] button

This is used to directly display the W.control.

**13** RESET button

Press the RESET button with a small pin, etc., to reset your Walkman.

**14** [Power] button

Hold down: Turns the power on/off.

Press: Turns the screen on/off.

## About volume operation (Only for countries/areas complying with European Directives)

An alarm (beep)\* and warning [Check the volume level] are meant to protect your ears when you raise the volume setting beyond a specific level for the first time. You can cancel the alarm and warning by tapping [OK] button on the alert dialog.

\* The alarm (beep) does not sound when connecting a Bluetooth audio device.

#### Note

- You can turn up the volume beyond the specific level after canceling the alarm and warning.
- After the initial warning, the alarm and warning repeat for every 20 cumulative hours that the volume is set beyond the specific level; when this happens, the volume is changed to the initial setting automatically.
- If the volume is set beyond the specific level and you turn off your Walkman, the volume returns to the specific level automatically.

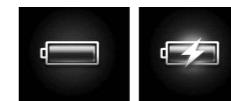
## Initial Settings

**1** Use the supplied USB cable to connect your Walkman to a running computer and charge the Walkman.

Your Walkman turns on.

#### Note

- If a large battery symbol is displayed while you are charging your Walkman, the remaining charge is still too low for your Walkman to operate. The Walkman will start automatically after being charged for about 10 minutes.



**2** If the USB connected screen appears, tap the [Back] button to quit the screen, and then proceed to the initial settings.

The language selection screen\* appears.

\* Depending on where you purchased your Walkman, the language selection screen may not appear.

**3** Select the desired language to be used to display the End User License Agreement.

**4** Make sure that you understand the terms of the license agreement then tap [Agree].

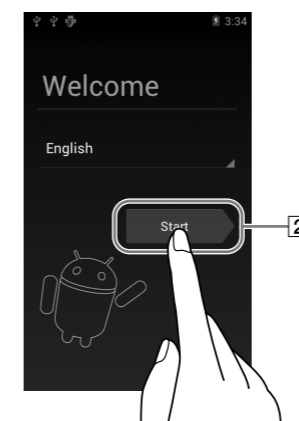
The initial setup screen appears.

**5** Tap **1**.



**6** Select the desired language.

**7** Tap **2** to begin using your Walkman.



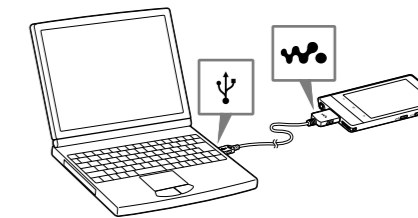
**8** Set the Wi-Fi connection, Google account and date/time, etc., following the instructions shown on the screen.

#### Hint

- Wi-Fi connection and Google account can also be set afterwards.

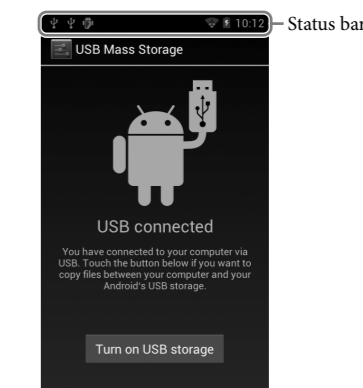
## How to Install the Supplied Software (Including Help guide)

**1** Connect your Walkman to a running computer using the supplied USB cable. Plug in the USB cable with [WALKMAN] facing upward, making sure the connection is secure.



#### Hint

- If [USB connected] appears on the screen, tap [Turn on USB storage] to connect your Walkman. If the following screen does not appear, swipe the status bar on the top of the screen and tap [Turn on USB storage] on the notification panel.



You can access your Walkman from the computer.

**2** Select your Walkman on the computer.

Click [Start] - [Computer] or [My Computer] - [WALKMAN].

**3** Double-click [Setup.exe].

The install wizard appears.

#### Hint

- When you execute [Setup.exe], the [Setup.exe] file stored in the [WALKMAN] folder of your Walkman is copied to your computer for backup, and the WALKMAN Guide and Media Go are installed to your computer.
- If you changed the type of USB connection to a setting other than MSC mode, change mode back to MSC mode again by tapping [Connected as USB Storage] on the notification panel.
- If [Setup.exe] does not start, copy the [Setup.exe] file to your desktop, then double-click it.

**4** Follow the on-screen instructions.

After the install wizard finishes, the [WALKMAN Guide] icon appears on the desktop of your computer. You can view the Help guide by double-clicking the [WALKMAN Guide] icon and clicking on the Help guide.

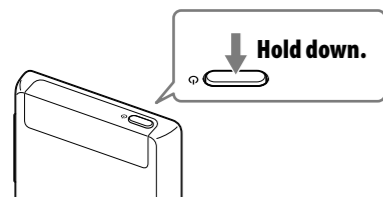
**5** Start Media Go.

You can transfer content stored on your computer to your Walkman. For details on transferring music, etc., refer to the Help guide.

#### Hint

- You can start the WALKMAN Guide and Media Go from the [Start] menu (displayed by clicking [Start]).
- You can install the supplied software on another computer through the following procedure even if you delete the [Setup.exe] file by formatting the built-in flash memory of your Walkman. Copy the [Setup.exe] file and the [Install] folder from the [Backup] folder of your computer to the Walkman. Then, connect the Walkman to another computer on which you want to install the software and follow the above procedure from step 2. The [Backup] folder can be found at C:\Program Files\Sony\WALKMAN Guide\NWZ-F800\Backup ([Program Files(x86)]) may be displayed depending on the computer OS.)

## Turning On/Off Your “WALKMAN”

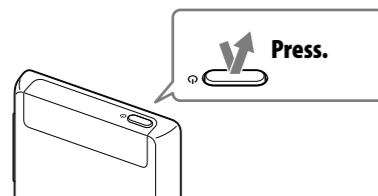


## Turning On/Off the Screen

The screen will turn off if no operations are made for a certain period of time.

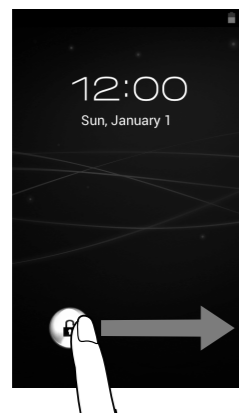
### 1 Press the (Power) button.

The lock screen will be displayed.



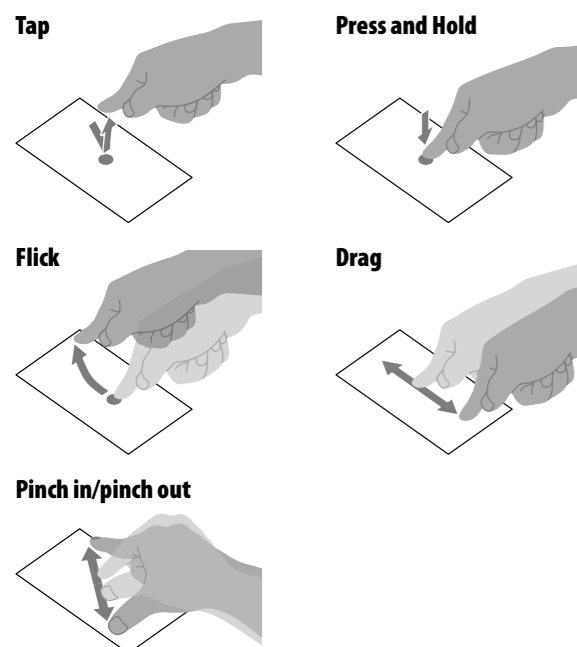
### 2 Drag from left to right.

Your Walkman is then unlocked, and the Home screen appears. Press the button again to turn off the screen.



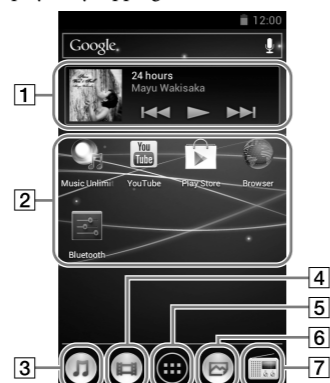
## How to Use the Touch Screen

The Walkman screen is touch-sensitive. You can operate your Walkman by gestures such as tapping, pressing, and flicking the screen. Refer to the Help guide (HTML document) for details.



## Home Screen

The Home screen is displayed by tapping the (Home) button.



### 1 [Music player] widget

Play back music.

### 2 Application shortcut

Starts application individually.

### 3 [Music player] shortcut

Play back music files transferred by Media Go or drag and drop.

### 4 [Video player] shortcut

Play back video files by intuitive operations.

### 5 Apps

Displays all your applications and widgets.

### 6 [Photo viewer] shortcut

View photos and slide shows.

### 7 [FM radio] shortcut

Starts FM radio.

## How to Use the Help guide on Your “WALKMAN”

Start the Help guide installed on your Walkman.

The Help guide for viewing on your Walkman screen is provided only in some languages.

### 1 Tap from the Home screen then [ Help guide].

#### Hint

- You can also read the Help guide on your computer by installing the supplied WALKMAN Guide software on your computer.

## Troubleshooting

If your Walkman does not function as expected, try the following steps to resolve the issue.

### 1 Find the symptoms of the issue in “Troubleshooting” in the Help guide (HTML document), and try any corrective actions listed.

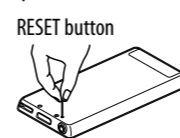
For details on connecting to a computer, see the table below.

### 2 Connect your Walkman to your computer to charge the battery.

You may be able to resolve some issues by charging the battery.

### 3 Press the RESET button with a small pin, etc.

Before resetting your Walkman, check that no song, video, etc., is being played back. You can then reset the Walkman safely.



### 4 Check information on the issue in the Help of software you are using.

### 5 Look up information on the issue on one of the customer support websites.

For customer support websites, see “For the latest information.”

### 6 If the approaches listed above fail to resolve the issue, consult your nearest Sony dealer.

Symptom	Cause/Remedy
Your Walkman is not recognized as USB storage.	<ul style="list-style-type: none"> <li>The USB connection is turned off.                             <ul style="list-style-type: none"> <li>→ Swipe the status bar, then tap [Turn on USB storage] on the notification panel followed by [Turn on USB storage] then [OK].</li> </ul> </li> <li>USB debugging is enabled.                             <ul style="list-style-type: none"> <li>→ Some devices or software may not recognize your Walkman when USB debugging is enabled. Tap the  (Menu) button, then tap [System settings] -  [Developer options] - [USB debugging] and uncheck the box.</li> </ul> </li> </ul>
The computer does not recognize your Walkman even if connected by USB cable.	<ul style="list-style-type: none"> <li>The USB cable is not connected to a USB connector on your computer properly.                             <ul style="list-style-type: none"> <li>→ Disconnect the USB cable, and then reconnect it.</li> <li>→ Use the supplied USB cable.</li> </ul> </li> <li>A USB hub is being used.                             <ul style="list-style-type: none"> <li>→ Your Walkman may not be recognized by the computer if using a USB hub. Connect the Walkman directly to the computer's USB port.</li> </ul> </li> <li>The USB connector on your computer may have a problem.                             <ul style="list-style-type: none"> <li>→ Connect your Walkman to another USB connector on your computer.</li> </ul> </li> <li>When you use your Walkman for the first time, or when the battery is low, the battery symbol may display and you may not be able to use the Walkman. This is not a malfunction. Wait for about 10 minutes before attempting operations.</li> <li>Software authentication may take some time. Wait for a while.</li> <li>Software installation failed.                             <ul style="list-style-type: none"> <li>→ Reinstall the software using the installer. Imported data will remain unchanged.</li> </ul> </li> <li>If the problem still persists after performing the remedies above, press the RESET button to reset your Walkman.</li> </ul>
Your Walkman becomes unstable while it is connected to the computer.	<ul style="list-style-type: none"> <li>A USB hub or USB extension cable is being used.                             <ul style="list-style-type: none"> <li>→ Your Walkman may be unstable if using a USB hub or USB extension cable. Connect the Walkman directly to the computer's USB port.</li> </ul> </li> </ul>
Your Walkman gets warm.	<ul style="list-style-type: none"> <li>Your Walkman may become warm when the battery is being charged and just after charging. The Walkman also may get warm temporarily when a large amount of data is transferred. Set the Walkman aside for a while to allow it to cool down.</li> </ul>

### To initialize (format) your “WALKMAN”

You can format the built-in flash memory of your Walkman. If the memory is formatted, your data will be erased and all setting values will return to their defaults.

#### Note

- If you execute this function, Google account information and downloaded applications will be erased.
- If you tap and check [Erase USB storage] in step 2, the following data will be erased: Music and photo data transferred to your Walkman; Preinstalled content; the Setup.exe file stored in Walkman memory, for installation on your computer. Be careful because the preinstalled content and the Setup.exe file will not be offered again. It is best to back up such data to a computer before initializing the Walkman.
- Do not format the built-in flash memory using Windows Explorer. If you want to format the built-in flash memory, format it on your Walkman.

### 1 Tap the (Home) button to display the Home screen.

### 2 Tap the (Menu) button, and tap [System settings] - [Backup & reset] - [Factory data reset] - [Reset device].

Tap and check [Erase USB storage] to delete transferred music, videos and photos.

### 3 Tap [Erase everything].

Your Walkman restarts automatically after being initialized.

## Precautions

### About the headphones

- Avoid playing the unit at so loud a volume that extended play might affect your hearing.
- At a high volume outside sounds may become inaudible. Avoid listening to the unit in situations where hearing must not be impaired, for example, while driving or cycling.
- As the supplied headphones are of open-air design, sounds go out through the headphones. Remember not to disturb those close to you.

### License and Trademark Notice

Refer to the Help guide (HTML document).

### For users in France

When replacing the headphones/earphones, please refer to the model of the headphones/earphones adapted to your unit that appears below.

MDR-EX0300E

At high volume, prolonged listening to the personal audio player can damage the user's hearing.



### Owner's Record

The model and serial numbers are located on the back of the player. Record them in the space provided below. Refer to these numbers in the spaces whenever you call upon your Sony dealer regarding this product.

Model No. \_\_\_\_\_

Serial No. \_\_\_\_\_

### For the latest information

If you have any questions or issues with this product, or would like information on compatible items with this product, visit the following websites.

For customers in the USA:

<http://www.sony.com/walkmansupport>

For customers in Canada:

<http://esupport.sony.com/ca/>

For customers in Europe:

<http://support.sony-europe.com/DNA>

For customers in Latin America:

<http://www.sony-latin.com/index.crp>

For customers in other countries/regions:

<http://www.sony-asia.com/support>

For customers who purchased the overseas models:

<http://www.sony.co.jp/overseas/support/>

## Free Manuals Download Website

<http://myh66.com>

<http://usermanuals.us>

<http://www.somanuals.com>

<http://www.4manuals.cc>

<http://www.manual-lib.com>

<http://www.404manual.com>

<http://www.luxmanual.com>

<http://aubethermostatmanual.com>

Golf course search by state

<http://golfingnear.com>

Email search by domain

<http://emailbydomain.com>

Auto manuals search

<http://auto.somanuals.com>

TV manuals search

<http://tv.somanuals.com>