

Compact Hi-Fi Component System

Operating Instructions



CHC-TB10

WARNING

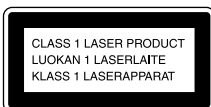
To prevent fire or shock hazard, do not expose the unit to rain or moisture.

To avoid electrical shock, do not open the cabinet. Refer servicing to qualified personnel only.

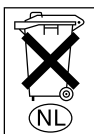
To prevent fire, do not cover the ventilation of the apparatus with newspapers, table-cloths, curtains, etc. And don't place lighted candles on the apparatus.

To prevent fire or shock hazard, do not place objects filled with liquids, such as vases, on the apparatus.

Do not install the appliance in a confined space, such as a bookcase or built-in cabinet.



This appliance is classified as a CLASS 1 LASER product. This label is located on the rear exterior.



Don't throw away the battery with general house waste, dispose of it correctly as chemical waste.



ENERGY STAR® is a U.S. registered mark. As an ENERGY STAR® partner, Sony Corporation has determined that this product meets the ENERGY STAR® guidelines for energy efficiency.

Table of Contents

List of Button Locations and Reference Pages

Main unit	4
Remote control	5

Getting Started

Hooking up the system	6
Inserting two R6 (size AA) batteries into the remote	7
Attaching the speaker pads	7
Setting the clock	8

CD

Loading a CD	8
Playing a CD —Normal Play/Shuffle Play /Repeat Play	9
Programing CD tracks —Program Play	10

Tuner

Presetting radio stations	11
Listening to the radio —Preset Tuning	13
—Manual Tuning	13
Using the Radio Data System (RDS)*	14

Tape

Loading a tape	15
Playing a tape	15
Recording to a tape —CD Synchro Recording/Recording Manually/Program Edit	16
Timer-recording radio programs	17

Sound Adjustment

Adjusting the sound—GROOVE	18
Selecting the preset music menu	19

Timer

Falling asleep to music — Sleep Timer	20
Waking up to music — Daily Timer	20

Display

Turning off the display — Power Saving Mode	21
Adjusting the brightness of the display back light	22
Using the display	22

Optional Components

Hooking up optional components	23
Listening to audio from a connected component	24
Recording on a connected digital component	24
Recording audio from a connected component	24

Troubleshooting

Problems and remedies	25
Messages	27

Additional Information

Precautions	28
Specifications	30

* European model only

Remote control

ALPHABETICAL ORDER

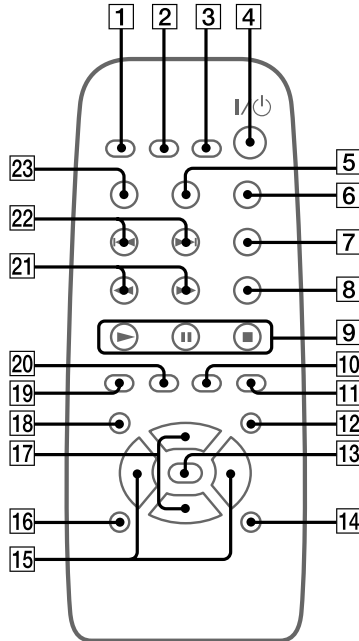
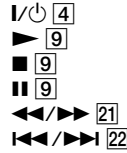
A - G

CD **19** (9)
 CLEAR **23** (10)
 CLOCK/TIMER SELECT **2**
 (21, 25)
 CLOCK/TIMER SET **3**
 (8, 17, 20)
 DISPLAY **16** (14, 21)
 EFFECT ON/OFF **14** (19)
 ENTER **7** (8, 10, 11, 17, 20, 27)
 GROOVE **13** (18)

M - Z

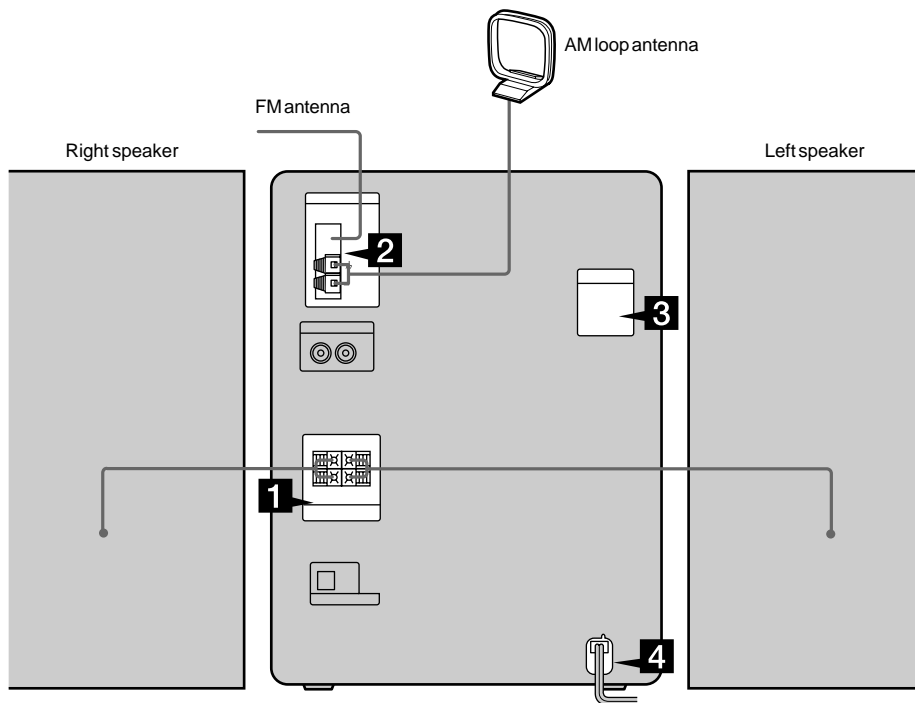
MD **10** (24)
 MUSIC MENU +/- **15** (19)
 PLAY MODE **5** (9, 26)
 PRESET +/- **22**
 REPEAT **6** (9)
 SLEEP **1** (20)
 SURROUND **12** (18)
 TAPE **11** (15)
 TONE **18** (18)
 TUNER/BAND **20** (11, 13)
 TUNER MEMORY **8** (11)
 TUNING +/- **21** (11)
 VOL +/- **17**

BUTTON DESCRIPTIONS



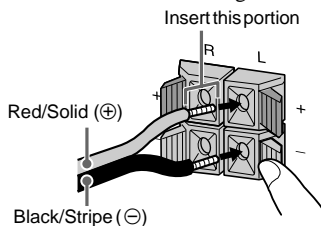
Hooking up the system

Perform the following procedure **1** to **4** to hook up your system using the supplied cords and accessories.



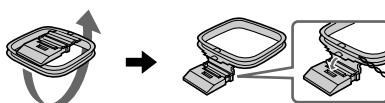
1 Connect the speakers.

Connect the speaker cords to the SPEAKER terminals as the following.

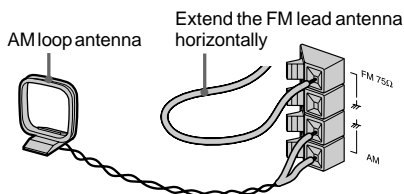


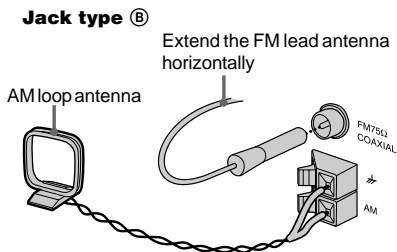
2 Connect the FM/AM antennas.

Set up the AM loop antenna, then connect it.

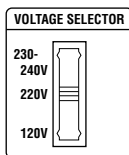


Jack type (A)





- 3** For models with a voltage selector, set **VOLTAGE SELECTOR** to the local power line voltage.



- 4** Connect the power cord to a wall outlet.

The demonstration appears in the display.

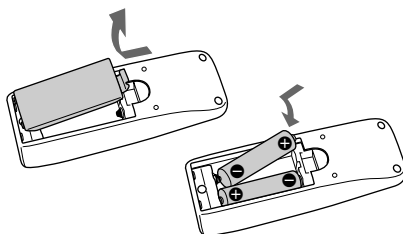
If the plug of the power cord does not fit your wall outlet, attach the supplied adapter on to the plug (for models with a plug adapter). To turn on the system, press I/⏻.

When carrying this system

Perform the following procedure to protect the CD mechanism.

- 1 Make sure that the disc is removed from the system.
- 2 Press I/⏻ while holding down CD ►|| until "STANDBY" appears. When you release the buttons, "LOCK" appears.
- 3 Unplug the power cord.

Inserting two R6 (size AA) batteries into the remote



Tip

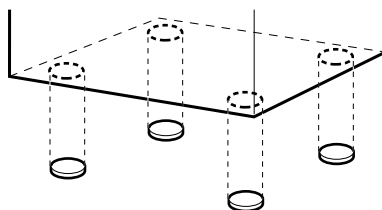
When the remote no longer operates the system, replace both batteries with new ones.

Note

If you do not use the remote for a long period of time, remove the batteries to avoid possible damage from battery leakage.

Attaching the speaker pads

Attach the supplied speaker pads to the bottom of the speakers to stabilize the speakers and prevent them from slipping.



Setting the clock

- 1** Turn on the system.
- 2** Press **CLOCK/TIMER SET** on the remote.
“CLOCK” appears.
- 3** Press **◀◀** or **▶▶** on the remote to set the hour.
- 4** Press **ENTER**.
The minute indication flashes.
- 5** Press **◀◀** or **▶▶** on the remote to set the minute.
- 6** Press **ENTER**.
The clock starts working.

Tip

If you make a mistake while setting the clock, press **■**, then start over from step 2.

To adjust the clock

- 1** Press **CLOCK/TIMER SET** on the remote.
- 2** Press **◀◀** or **▶▶** on the remote to select “CLOCK”, then press **ENTER**.
- 3** Do the same procedures as step 3 to 6 above.

Note

You cannot set the clock in the Power Saving Mode.

Loading a CD

- 1** Press **▲**.
The disc tray opens.
- 2** Place a CD with the label side up on the disc tray.

When you play a CD single (8 cm CD), place it on the inner circle of the tray.

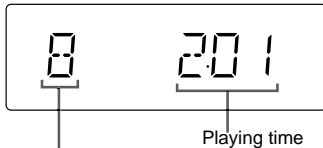


- 3** Press **▲** again to close the disc tray.

Playing a CD

— Normal Play/Shuffle Play/Repeat Play

This system lets you play the CD in different play modes.



1 Press FUNCTION repeatedly (or press CD on the remote) to switch the function to CD.

2 Press PLAY MODE/TUNING MODE in stop mode repeatedly until the mode you want appears in the display.

Select	To play
no display (Normal Play)	The tracks on the CD in original order.
SHUFFLE (Shuffle Play)	The tracks on the CD in random order.
PGM (Program Play)	The tracks on the CD in the order you want them to be played (see "Programing CD tracks" on page 10).

3 Press CD ►|| (or ► on the remote).

Other Operations

To	Do this
Stop play	Press ■.
Pause	Press CD ► (or on the remote). Press again to resume play.
Select a track	Slide the knob to ►► (to go forward) or to ◀◀ (to go back) and release it when you locate the desired track (or press ◀◀ or ►► on the remote).
Find a point in a track	Slide and hold the knob to ►► or to ◀◀ during play and release it at the desired point (or keep pressing ◀◀ or ►► on the remote).
Remove a CD	Press ▲.
Play repeatedly (Repeat Play)	Press REPEAT/FM MODE during play until "REPEAT" or "REPEAT 1" appears. REPEAT: For all the tracks on the CD up to five times. REPEAT 1: For a single track only. To cancel playing repeatedly, press REPEAT/FM MODE until "REPEAT" or "REPEAT 1" disappears.

Tip

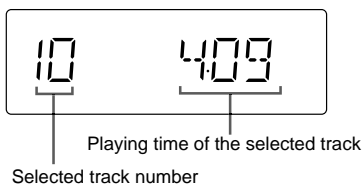
You can start playing from the desired track in Normal Play or Program Play. Slide the knob to ◀◀|| or to ►►|| (or press ◀◀ or ►► on the remote) until the desired track number appears after step 1.

Programing CD tracks

— Program Play

You can make a program of up to 25 tracks.

- 1 Press FUNCTION repeatedly (or press CD on the remote) to switch the function to CD.**
- 2 Press PLAY MODE/TUNING MODE repeatedly until “PGM” appears.**
- 3 Slide the knob to ◀◀ or to ▶▶ (or press ◀◀ or ▶▶ on the remote) until the desired track number appears.**



- 4 Press ENTER.**
The track is programmed.
- 5 To program additional tracks, repeat steps 3 and 4.**
- 6 Press CD ▶|| (or ▶ on the remote).**

To	Do this
Cancel Program Play	Press PLAY MODE/TUNING MODE repeatedly until “PGM” and “SHUFFLE” disappear.
Clear a track from the end	Press CLEAR on the remote in stop mode.
Add a track to the end of the program in stop mode	Perform steps 3 and 4.

Tips

- The program you made remains after Program Play finishes. To play the same program again, press CD ▶||.
- “- - -” appears when the total CD program time exceeds 100 minutes, or when you select a CD track whose number is 21 or over.

Presetting radio stations

You can preset up to 20 FM stations and 10 AM stations. You can then tune in any of those stations simply by selecting the corresponding preset number.

There are two ways to store the station presets.

To	Method
Automatically tune all of the stations that can be received in your area and then store them manually	Automatic Tuning Preset
Manually tune and store the radio frequency of your favourite stations	Manual Tuning Preset

Setting presets through automatic tuning

1 Press **TUNER/BAND** repeatedly to select “FM” or “AM”.

2 Press **PLAY MODE/TUNING MODE** repeatedly until “AUTO” appears.

When you use the remote in step 3, skip this procedure.

3 Slide the knob to – or to + (or press and hold **TUNING –/+** on the remote).

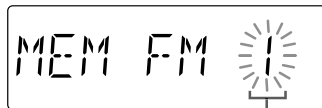
The frequency indication changes and the scanning stops when the system tunes in a station. “TUNED” and “STEREO” (for a stereo program) appear.

If “TUNED” does not appear and the scanning does not stop

Set the frequency of the desired radio station as described in step 2 through 7 of “Setting presets through manual tuning” on page 12.

4 Press **TUNER MEMORY/DIRECTION** (or press **TUNER MEMORY** on the remote).

5 Slide the knob to – or to + (or press **PRESET –** or **+** on the remote) repeatedly to select the desired preset number.



Preset number

6 Press **ENTER**.

The station is stored.

7 Repeat steps 1 to 6 to store other stations.

Tip

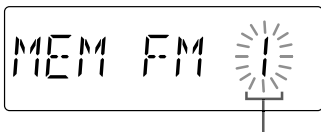
To stop scanning, press ■.

continued

Presetting radio stations (continued)

Setting presets through manual tuning

- 1** Press TUNER/BAND repeatedly to select “FM” or “AM”.
- 2** Press PLAY MODE/TUNING MODE repeatedly until “AUTO” and “PRESET” disappear.
When you use the remote in step 3, skip this procedure.
- 3** Slide the knob to – or to + (or press TUNING – or + on the remote) repeatedly to tune in the desired station.
- 4** Press TUNER MEMORY/DIRECTION (or press TUNER MEMORY on the remote).
- 5** Slide the knob to – or to + (or press PRESET – or + on the remote) repeatedly to select the desired preset number.



Preset number

- 6** Press ENTER.
The station is stored.
- 7** Repeat steps 1 to 6 to store other stations.

Other operations

To	Do this
Tune in a station with a weak signal	Follow the procedure described in “Setting presets through manual tuning”.
Stop setting presets	Press TUNER MEMORY on the remote.
Stop scanning	Press ■.
Change the preset station	Start over from step 1.
Change the preset number	Start over from step 1.

To change the AM tuning interval (except for the European model)

The AM tuning interval is factory-set to 9 kHz (10 kHz in some areas). To change the AM tuning interval, tune in any AM station first, then turn off the system. While holding ENTER, turn the system back on. When you change the interval, all the AM preset stations are erased. To reset the interval, repeat the same procedure.

Note

You cannot change the AM tuning interval in the Power Saving Mode.

Tips

- The preset stations are retained for about a day even if you disconnect the power cord or if a power failure occurs.
- To improve broadcast reception, reorient or move the supplied antennas near a window or outdoors.

Listening to the radio

You can listen to a radio station either by selecting a preset station, or by manually tuning in the station.

Listening to a preset station

— Preset Tuning

Preset radio stations in the tuner's memory first (see "Presetting radio stations" on page 11).

- 1** Press **TUNER/BAND** repeatedly to select "FM" or "AM".
- 2** Press **PLAY MODE/TUNING MODE** repeatedly until "PRESET" appears.
- 3** Slide the knob to – or to + repeatedly to select the desired preset station (or RDS station name*).

* European model only.

Listening to a non-preset radio station

— Manual Tuning

- 1** Press **TUNER/BAND** repeatedly to select "FM" or "AM".
- 2** Press **PLAY MODE/TUNING MODE** repeatedly until "PRESET" and "AUTO" disappear.
- 3** Slide the knob to – or to + repeatedly to tune in the desired station.

Tips

- To improve broadcast reception, adjust the supplied antennas, or connect a commercially available external antenna.
- When an FM stereo program has static noise, press **REPEAT/FM MODE** repeatedly until "MONO MODE" appears. There will be no stereo effect, but the reception will improve.
- To tune automatically, press **PLAY MODE/TUNING MODE** repeatedly until "AUTO" appears in step 2 above, then slide the knob to ◀◀◀ or to ▶▶▶. The frequency indication changes and scanning stops when the system tunes in a station (Automatic Tuning).

Using the Radio Data System (RDS)

(European model only)

What is the Radio Data System?

Radio Data System (RDS) is a broadcasting service that allows radio stations to send additional information along with the regular program signal. This tuner offers convenient RDS features like station name and program type* display. RDS is available only on FM stations.**

Note

RDS may not work properly if the station you tuned in is not transmitting the RDS signal properly or if the signal is weak.

* The types of programs include NEWS, AFFAIRS (current news), INFO, SPORT, EDUCATE (education programs), DRAMA, CULTURE, SCIENCE, VARIED (interviews, games and comedy), POP M, ROCK M, EASY M, LIGHT M, CLASSICS, OTHER M, WEATHER, FINANCE, CHILDREN, SOCIAL, RELIGION, PHONE IN, TRAVEL, LEISURE, JAZZ, COUNTRY (country music), NATION M (nation's popular music), OLDIES, FOLK M, DOCUMENT (investigative features), TEST (test signal for emergency broadcast), ALARM (emergency broadcast) and NONE (any programs not defined above).

** Not all FM stations provide RDS service, nor do they provide the same types of services. If you are not familiar with the RDS system, check with your local radio stations for details on RDS services in your area.

Receiving RDS broadcasts

Simply select a station from the FM band.

When you tune in a station that provides RDS services, the station name appears in the display.

To check the RDS information

Each time you press DISPLAY, the display changes cyclically as follows:

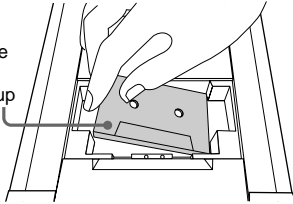
Station name* →Frequency →Program type* →Clock display →Effect status

* If the RDS broadcast is not received, the station name and program type may not appear in the display.

Loading a tape

- 1 Open the lid with your hand and insert a tape.

With the side you want to play facing up



To remove the tape, lift up the tape from the side as shown in the illustration.

- 2 Close the lid with your hand.

Playing a tape

You can use TYPE I (normal) tape.

- 1 Press **FUNCTION** repeatedly (or press **TAPE** on the remote) to switch the function to **TAPE**.
- 2 Press **TUNER MEMORY/DIRECTION** repeatedly until \rightleftarrows appears to play one side or \rightleftarrows (or \rightleftarrows *) to play both sides.
- 3 Press **TAPE** \blacktriangleleft (or \blacktriangleright on the remote).
Press **TAPE** \blacktriangleleft (or \blacktriangleright on the remote) again to play the bottom side.

* The tape deck stops automatically after repeating the sequence five times.

To	Do this
Stop play	Press \blacksquare .
Pause	Press II on the remote. Press again to resume play.
Fast-forward or rewind	Slide the knob to \blacktriangleleft or to \blacktriangleright (or press \blacktriangleleft or \blacktriangleright on the remote).


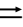


Notes

- If you do not close the lid, you cannot start playing the tape.
- If you open the lid while playing a tape, the deck stops playing.

Recording to a tape

— CD Synchro Recording/Recording Manually/Program Edit

You can record from a CD or radio (or connected components). You can use TYPE I (normal) tapes. The recording level is adjusted automatically.

Steps	Recording from a CD (CD Synchro Recording)	Recording from a CD (or a connected component) /radio manually
1	Load a recordable tape.	
2	Press FUNCTION repeatedly to select "CD".	Press FUNCTION repeatedly to select the desired source to record.
3	Load the CD you want to record.	Load the CD (or other audio source), or tune in the station you want to record.
4	Press CD SYNC .	Press REC PAUSE/START .
	The tape deck stands by for recording. When you want to record on the bottom side, press TAPE  .	
5	Press TUNER MEMORY/DIRECTION repeatedly to select  to record on one side. Select  (or ) to record on both sides.	
6	Press REC PAUSE/START .	Press REC PAUSE/START , and then start playing the desired source.

To stop recording

Press **■**.

Note

You cannot listen to other sources while recording.

Tips

- When you record on both sides, be sure to start from the top side. If you start from the bottom side, recording stops at the end of the bottom side.
- For recording from the radio:
If noise is heard while recording from the radio, move the respective antenna to reduce the noise.

Recording a CD by specifying track order

— Program Edit

- 1 Load a CD and load a recordable tape.**
- 2 Program CD tracks following step 1 to 5 in “Programing CD tracks” on page 10.**
- 3 Press CD SYNC.**

The tape deck stands by to record. The CD player stands by for playback.
- 4 Press TUNER MEMORY/DIRECTION repeatedly to select \rightleftarrows to record on one side. Select \rightleftarrows (or $\leftarrow\rightarrow$) to record on both sides.**
- 5 Press REC PAUSE/START.**

Tip

To check the required tape length for recording a CD, press EDIT until “EDIT” flashes after you have loaded a CD and pressed FUNCTION repeatedly until “CD” appeared. The required tape length for the currently selected CD appears, followed by the total playing time for side A and side B respectively (**Tape Select Edit**).

Note

You cannot use Tape Select Edit for discs containing over 20 tracks.

Timer-recording radio programs

To timer-record, set the clock (see “Setting the clock” on page 8).

- 1 Press CLOCK/TIMER SET on the remote.**

“SET” appears for a second and then “DAILY” appears.
- 2 Press \lll or \ggg on the remote to select “REC”, then press ENTER.**

“ON TIME” appears and the hour indication flashes.
- 3 Set the time to start recording.**

Press \lll or \ggg on the remote to set the hour, then press ENTER.
The minute indication flashes.
Press \lll or \ggg on the remote to set the minute, then press ENTER.
- 4 Set the time to stop recording following the procedure in step 3.**
- 5 Insert a recordable tape.**

Recording starts from the top side. Insert a tape with the side you want to record on facing up.
- 6 Tune in the radio station (see “Listening to the radio” on page 13).**
- 7 Press I/⏻ to turn off the system.**

Continued

Timer-recording radio programs (continued)

To	Do this
Activate/check the setting	Press CLOCK/TIMER SELECT on the remote and press ◀◀ or ▶▶ on the remote to select "REC", then press ENTER.
Change the setting	Start over from step 1.
Cancel the timer	Press CLOCK/TIMER SELECT on the remote and press ◀◀ or ▶▶ on the remote to select "OFF", then press ENTER.

Notes

- When you use the recording timer at the same time as the Sleep Timer, the Sleep Timer setting has priority.
- You cannot activate the Daily Timer and the recording timer at the same time.
- The system automatically turned on about 15 seconds before the preset time. Do not operate the system until the recording starts.
- If the system is on about 15 seconds before the preset time, the timer-recording will not be activated.
- The volume is reduced to minimum during recording.

Adjusting the sound

Enjoying the powerful sound

— GROOVE

You can listen to music with more powerful sound.

Press GROOVE.

"GROOVE" appears in the display and the volume switches to power mode. Press again to cancel GROOVE.

Tip

GROOVE is factory set to on.

Selecting the surround effect

Press SURROUND.

"SURROUND" appears in the display. Press again to cancel SURROUND.

Adjusting the bass

1 Press BASS (or press TONE on the remote repeatedly until "BASS" appears).

2 Slide the knob to ◀◀ or to ▶▶ (or press ◀◀ or ▶▶ on the remote) repeatedly to adjust the bass.

You can adjust the bass in 11 steps (from -5 to +5).

Adjusting the treble

- 1** Press **TREBLE** (or press **TONE** on the remote repeatedly until “**TREBLE**” appears).
- 2** Slide the knob to **◀◀** or to **▶▶** (or press **◀◀** or **▶▶** on the remote) repeatedly to adjust the treble.
You can adjust the treble in 11 steps (from -5 to + 5).

Tip

You can enjoy the original sound by setting **BASS** and **TREBLE** to 0.

Selecting the preset music menu

The audio emphasis menu lets you select the sound characteristics according to the sound you are listening to.

Press MUSIC MENU repeatedly (or press MUSIC MENU – or + on the remote) to select the preset you want.

The preset name appears in the display. See the chart “Music menu options”.

Music menu options

“**SURROUND**” appears if you select an effect with surround effects.

Effect	Recommended for
ROCK POP	Standard music sources
MOVIE GAME	Soundtracks and special listening situations
FLAT	Canceling the effect

To cancel the effect

Press **MUSIC MENU** repeatedly until “**FLAT**” appears, or press **EFFECT ON/OFF** on the remote repeatedly until “**EFFECT OFF**” appears.

Falling asleep to music

— Sleep Timer

You can set the system to turn off after a certain time, so that you can fall asleep to music.

Press SLEEP on the remote.

Each time you press the button, the minute display (the turn-off time) changes cyclically as follows:

AUTO* → 90min → 80min → ... → 10min → OFF

* The system automatically turns off after the current CD or tape finishes playing (up to 100 minutes).

When the function is TUNER, the system turns off after 100 minutes.

To	Press
Check the remaining time**	SLEEP on the remote once.
Change the time to turn off	SLEEP on the remote repeatedly to select the time you want.
Cancel the Sleep Timer function	SLEEP on the remote repeatedly until "OFF" appears.

**You cannot check the remaining time if you set to "AUTO".

Waking up to music

— Daily Timer

You can wake up to music at a preset time. Make sure you have set the clock (see "Setting the clock" on page 8).

1 Prepare the sound source you want to play.

- CD: Place a CD. To start from a specific track, make a program (see "Programming CD tracks" on page 10).
- Tape: Insert a tape.
- Radio: Tune in a station (see "Listening to the radio" on page 13).

2 Press VOL + or – on the remote to adjust the volume.

3 Press CLOCK/TIMER SET on the remote.

"SET" appears for a second and then "DAILY" appears.

4 Press ENTER.

"ON TIME" appears and the hour indication flashes.

5 Set the time to start playing.

Press ◀◀ or ▶▶ on the remote to set the hour, then press ENTER.

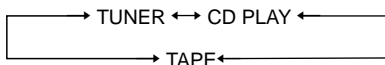
The minute indication flashes.

Press ◀◀ or ▶▶ on the remote to set the minute, then press ENTER.

6 Set the time to stop playing following the procedure in step 5.

7 Press ◀◀ or ▶▶ the remote to select the desired sound source.

The indication changes as follows:



8 Press ENTER.

The start time, the stop time, and the sound source appear in turn, then the original display returns.

9 Press I/⏻ to turn off the system.

To	Do this
Activate/check the setting	Press CLOCK/TIMER SELECT on the remote, then press ◀◀ or ▶▶ on the remote until "DAILY" appears. Then, press ENTER.
Change the setting	Start over from step 1.
Cancel the timer	Press CLOCK/TIMER SELECT on the remote then press ◀◀ or ▶▶ on the remote until "OFF" appears. Then, press ENTER.

Notes

- If the system is on about 15 seconds before the preset time, the Daily Timer will not be activated.
- The system automatically turns on about 15 seconds before the preset time. Do not operate the system until the play starts.
- You cannot activate the Daily Timer and the recording timer at the same time.
- The radio station you last tune in will be selected for the radio Daily Timer.

Turning off the display

— Power Saving Mode

The demonstration display (display window lighting even when the system power is off) and the clock display can be turned off to minimize the amount of power consumed during standby (Power Saving Mode).

Press DISPLAY repeatedly while the system is off until the demonstration display or the clock display disappears.

To cancel the Power Saving Mode

Press DISPLAY while the system is off. Each time you press the button, the display switches cyclically as follows:

Demonstration display → Clock display* → No display (Power Saving Mode)

* "--:--" is displayed if you do not set the clock.

Tips

- I/⏻ indicator lights up even in the Power Saving Mode.
- The timer continues to operate in Power Saving Mode.

Adjusting the brightness of the display back light

Press DIMMER repeatedly while the system is on.

You can adjust the back light brightness cyclically as follows:

DIMMER 0 → DIMMER 1 → DIMMER 2
→ DIMMER 3

Using the display

Checking the remaining time (CD)

Press DISPLAY during play.

Each time you press the button, the display changes cyclically as follows:

Elapsed playing time on the current track →
Remaining time on the current track* →
Remaining time on the CD → Clock display
→ Effect name

* “--:--” appears when you select a CD track whose number is over 21.

Checking the total playing time (CD)

Press DISPLAY in stop mode.

Each time you press the button, the display changes cyclically as follows:

Total number of tracks and total playing time
→ Clock display → Effect name

Checking the station name (Tuner)

Press DISPLAY.

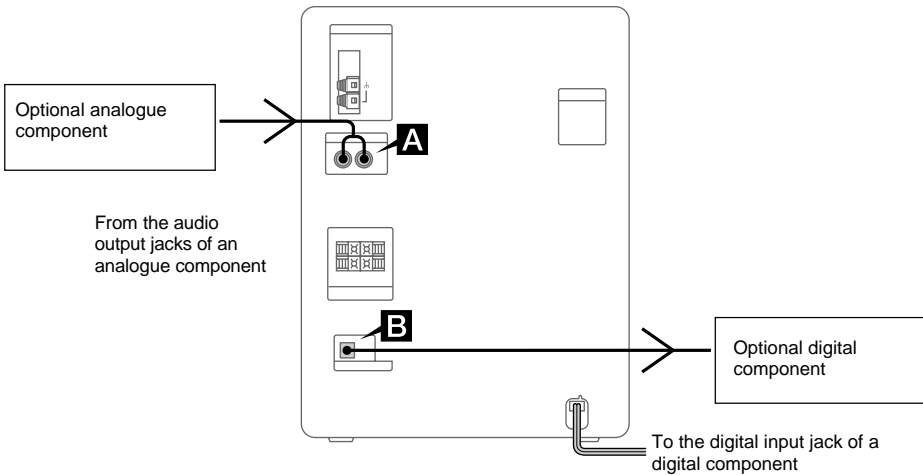
Each time you press the button, the display changes cyclically as follows:

Station name* → Frequency → Program
type* → Clock display → Effect name

* Displayed only when radio station name or other information is received (see “Using the Radio Data System (RDS)” on page 14).

Hooking up optional components

You can connect a digital or an analogue component to this system.



A MD IN jacks

Use audio cords (not supplied) to connect an optional component (such as an MD player or VCR) to these jacks. You can then record or listen to analogue audio from that component through this system.

B CD DIGITAL OUT jack

Use a digital cable (square, not supplied) to connect an optional digital component (such as an MD recorder) to this jack. You can then make a digital recording from this system to that digital component.

Listening to audio from a connected component

- 1 Connect the audio cords.**
See “Hooking up optional components” on page 23.
- 2 Press MD to switch the function to MD.**
Start playing the connected component.

Recording on a connected digital component

- 1 Connect the digital cable.**
See “Hooking up optional components” on page 23.
- 2 Start recording.**
Refer to the operating instructions provided with the connected component.

Recording audio from a connected component

- 1 Connect the audio cords.**
See “Hooking up optional components” on page 23.
- 2 Start recording manually.**
See “Recording to a tape” on page 16.

Problems and remedies

If you have any problem using this system, use the following checklist.

First, check that the power cord is connected firmly and that the speakers are connected correctly and firmly.

Should any problem persist, consult your nearest Sony dealer.

General

The display window and buttons keep on or flashing even the power is turned off.

- When the power is off, press DISPLAY on the remote repeatedly and select the clock display or Power Saving Mode (no display) (see page 21).

“--:--” appears in the display.

- Set the clock again (see page 8).

There is no sound.

- Turn VOL upward (or press VOL+ on the remote).
- Make sure the headphones are not connected.
- Check the speaker connections (see page 6).

Sound comes from one channel, or unbalanced left and right volume.

- Connect the speaker cords properly (see page 6).
- Place the speakers as symmetrically as possible.
- Connect only one of the supplied speakers to each set of speaker terminals.
- Connect the supplied speakers.

There is severe hum or noise.

- Move the system away from the source of noise.
- Connect the system to a different wall outlet.
- Install a noise filter (commercially available) to the power line.

The timer cannot be set.

- Set the clock again (see page 8).

The timer does not function.

- Press CLOCK/TIMER SELECT on the remote to set the timer and light up “DAILY” or “REC” in the display (see pages 17, 18, 20 and 21).
- Check the set contents and set the correct time (see pages 17, 18, 20 and 21).

The remote does not function.

- Remove the obstacle.
- Move the remote closer to the system.
- Point the remote at the system’s sensor.
- Replace the batteries (R6/size AA).
- Locate the system away from the fluorescent light.

“PROTECT” and “PUSH POWER” appear alternately.

- Press I/⏻ (power) to turn off the system. Turn on the system again after a while.
- Check the speaker connections (see page 6).

CD Player

The CD tray does not close.

- Place the CD correctly in the center of the tray.
- Always close the tray by pressing ▲. Trying to close the tray by pushing with your fingers may cause a malfunction to the CD player.

The CD does not eject.

- Consult your nearest Sony dealer.

Play does not start.

- Open the CD tray and check whether a CD is loaded.
- Wipe the CD clean (see page 29).
- Replace the CD.
- Place the CD correctly in the center of the tray.
- Place the CD in the tray with the label side up.
- Remove the CD and wipe away the moisture on the CD, then leave the system turned on for a few hours until the moisture evaporates.
- Press CD ►|| to start play.

continued

Problems and remedies (continued)

The sound skips.

- Wipe the CD clean (see page 29).
 - Replace the CD.
 - Try moving the system to a place without vibration (e.g., on top of a stable stand).
 - Try moving the speakers away from the system, or placing them on separate stands.
 - When you listen to a track with bass sounds at high volume, the speaker vibration may cause the sound to skip.
-

Play does not start from the first track.

- Press PLAY MODE/TUNING MODE in stop mode repeatedly until "PGM" or "SHUFFLE" disappears to return to normal play.
-

The disc tray does not open and "LOCKED" appears.

- Contact your Sony dealer or local authorized Sony service facility.
-

Tape Deck

The tape does not record.

- The tab has been removed from the cassette. Cover the broken tab with adhesive tape (see page 29).
 - The tape has wound to the end.
-

The tape does not record or play, or there is a decrease in sound level.

- The heads are dirty. Clean them.
 - The record/playback heads are magnetized. Demagnetize them (see page 29).
-

The tape does not erase completely.

- The record/playback heads are magnetized. Demagnetize them (see page 29).
-

There is excessive wow or flutter, or the sound drops out.

- The capstans in the tape deck are dirty. Clean them using a cleaning cassette.
-

Noise increases or the high frequencies are erased.

- The record/playback heads are magnetized. Demagnetize them (see page 29).
-

Optional components

There is no sound.

- Refer to General item "There is no sound." on page 25 and check the condition of the system.
 - Connect the component properly (see page 23) while checking:
 - if the cords are connected properly.
 - if the cord plugs are firmly inserted all the way.
 - Turn on the connected component.
 - Refer to the operating instructions provided with the connected component and start playing.
-

The sound is distorted.

- Set the volume of the connected component lower.
-

Tuner

Severe hum or noise/stations cannot be received.

- Set the proper band and frequency (see page 11).
 - Connect the antenna properly (see page 6).
 - Find a place and an orientation that provide good reception, then set up the antenna again. If you cannot obtain good reception, we recommend you connect a commercially available external antenna.
 - The supplied FM lead antenna receives signals along its entire length, so make sure you extend it fully.
 - Locate the antennas as far away from the speaker cords as possible.
 - Consult your nearest Sony dealer if the supplied AM antenna has come off the plastic stand.
 - Try turning off surrounding electrical equipment.
-

A stereo FM program cannot be received in stereo.

- Press REPEAT/FM MODE until "STEREO MODE" appears in the display.
 - See "Severe hum or noise/stations cannot be received.", and check the antenna condition.
-

If the system still does not operate properly after performing the above measures, reset the system as follows:

- 1 Unplug the power cord.
- 2 Plug the power cord back into the wall outlet.
- 3 Press I/⏻ to turn on the system.
- 4 Press ■, I/⏻ and ENTER at the same time.
- 5 Unplug the power cord.
- 6 Plug the power cord back into the wall outlet, then press I/⏻ to turn on the system.

The system is reset to the factory settings. All the settings you made such as the preset stations, clock, and timer are cleared and must be set again.

Note

You cannot reset the system in the Power Saving Mode.

Messages

One of the following messages may appear or flash in the display during operation.

CD

FULL!

You tried to program 26 or more tracks (steps).

NO DISC

There is no CD in the CD tray.

NO STEP

You have cleared all the tracks you programmed.

OVER

You have reached the end of the CD while pressing ►► during play or pause.

PUSH STOP

You pressed PLAY MODE/TUNING MODE during play.

TAPE

CANT EDIT

You tried to use Tape Select Edit for discs containing over 20 tracks.

NO TAB

You cannot record the tape because the tab has been removed from the cassette.

NO TAPE

There is no tape in the tape deck.

OPEN

You performed a tape operation with the tape deck lid not completely shut.

Precautions

On operating voltage

Before operating the system, check that the operating voltage of your system is identical with the voltage of your local power supply.

On safety

- The unit is not disconnected from the AC power source (mains) as long as it is connected to the wall outlet, even if the unit itself has been turned off.
- Unplug the system from the wall outlet if it is not to be used for an extended period of time.
To disconnect the power cord, pull it out by the plug. Never pull the cord itself.
- Should any solid object or liquid fall into the system, unplug the system and have it checked by qualified personnel before operating it any further.
- AC power cord must be changed only at the qualified service shop.

On placement

- Make sure the system fan is on during use.
Place the system in a location with adequate air circulation, and do not place anything on top of the system.
- Do not place the system in an inclined position.
- Do not place the system in locations where it is:
 - Extremely hot or cold
 - Dusty or dirty
 - Very humid
 - Subject to vibrations
 - Subject to direct sunlight
- Use caution when placing the unit or speakers on surfaces that have been specially treated (with wax, oil, polish, etc.) as staining or discoloration of the surface may result.

On heat build up

- Although the system heats up during operation, this is not a malfunction.
- Place the system in a location with adequate ventilation to prevent heat build up in the system.

If you continuously use this system at a large volume, the cabinet temperature of the top, side and bottom rises considerably. To avoid burning yourself, do not touch the cabinet.

To prevent a malfunction, do not cover the ventilation hole for the cooling fan.

On operation

- If the system is brought directly from a cold to a warm location, or is placed in a very damp room, moisture may condense on the lens inside the CD player. Should this occur, the system will not operate properly. Remove the CD and leave the system turned on for about an hour until the moisture evaporates.
- When you move the system, take out any discs.

If you have any questions or problems concerning your system, please consult your nearest Sony dealer.

On the speaker system

This speaker system is not magnetically shielded and the picture on TV sets may become magnetically distorted. In such a case, turn off the power of the TV set once, and after 15 to 30 minutes turn it on again. If there seems to be no improvement, locate the speaker system further away from the TV set. Also, be sure not to place objects in which magnets are attached or used near the speaker system, such as audio racks, TV stands, and toys. These may cause magnetic distortion to the picture due to their interaction with the system.

Notes on CDs

- Before playing, clean the CD with a cleaning cloth. Wipe the CD from the center out.
- Do not use a CD with tape, seals, or paste on it as this may damage the player.
- Do not use solvents.
- Do not expose the CD to direct sunlight or heat sources.
- Discs with non-standard shapes (e.g., heart, square, star) cannot be played on this system. Attempting to do so may damage the system. Do not use such discs.

Note on CD-R/CD-RW playback

Discs recorded on CD-R/CD-RW drives may not be played back because of scratches, dirt, recording condition or the drive's characteristics. Besides, the discs, which are not yet finalized at the end of recording, cannot be played back.

Cleaning the cabinet

Use a soft cloth slightly moistened with mild detergent solution.

Before placing a cassette in the tape deck

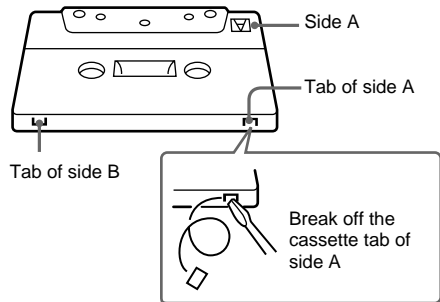
Take up any slack in the tape. Otherwise, the tape may get entangled in the parts of the tape deck and become damaged.

When using a tape longer than 90 minutes

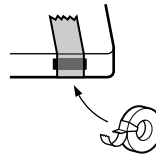
The tape is very elastic. Do not change the tape operations such as play, stop, and fast-winding frequently. The tape may get entangled in the tape deck.

To save a tape permanently

To prevent a tape from being accidentally recorded over, break off the cassette tab from side A or B as illustrated.



If you later want to reuse the tape for recording, cover the broken tab with adhesive tape.



Cleaning the tape heads

Clean the tape heads after every 10 hours of use. Be sure to clean the tape heads before you start an important recording or after playing an old tape. Use a separately sold dry-type or wet-type cleaning cassette. For details, refer to the instructions of the cleaning cassette.

Demagnetizing the tape heads

Demagnetize the tape heads and the metal parts that have contact with the tape after every 20 to 30 hours of use with a separately sold demagnetizing cassette. For details, refer to the instructions of the demagnetizing cassette.

Specifications

Main Unit (HCD-TB10)

Amplifier section

European models

DIN power output (Rated): 40 + 40 watts
(6 ohms at 1 kHz, DIN)

Continuous RMS power output (Reference):
50 + 50 watts
(6 ohms at 1 kHz, 10% THD)

Music power output (Reference):
100 + 100 watts
(6 ohms at 1 kHz, 10% THD)

Other models

Measured at AC 120/220/240 V, 50/60 Hz:
DIN power output (Rated): 40 + 40 watts
(6 ohms at 1 kHz, DIN)

Continuous RMS power output (Reference):
50 + 50 watts
(6 ohms at 1 kHz, 10% THD)

Inputs
MD IN (phono jacks): voltage 450 mV,
impedance 47 kilohms

Outputs
PHONES (stereo minijack):
accepts headphones of
8 ohms or more.

SPEAKER: Accepts impedance of 6 to
16 ohms.

CD player section

System Compact disc and digital
audio system
Laser Semiconductor laser
($\lambda=780$ nm)
Emission duration:
continuous
Frequency response 2 Hz – 20 kHz (± 0.5 dB)
CD DIGITAL OUT
(Square optical connector jack, rear panel)
Wavelength 660 nm

Tape deck section

Recording system 4-track 2-channel stereo
Frequency response 50 – 13,000 Hz (± 3 dB),
using Sony TYPE I
cassettes
Wow and flutter $\pm 0.15\%$ W. Peak (IEC)
0.1% W. RMS (NAB)
 $\pm 0.2\%$ W. Peak (DIN)

Tuner section

FM stereo, FM/AM superheterodyne tuner

FM tuner section

Tuning range 87.5 – 108.0 MHz
(50 kHz step)
Antenna FM lead antenna
Antenna terminals 75 ohms unbalanced
Intermediate frequency 10.7 MHz

AM tuner section

Tuning range
European models: 531 – 1,602 kHz
(with the interval set at
9 kHz)
Pan-American models:
531 – 1,710 kHz
(with the interval set at
9 kHz)
530 – 1,710 kHz
(with the interval set at
10 kHz)
Other models:
531 – 1,602 kHz
(with the interval set at
9 kHz)
530 – 1,710 kHz
(with the interval set at
10 kHz)
Antenna AM loop antenna
External antenna terminals
Intermediate frequency 450 kHz

Speaker (SS-TB10)

Speaker system	2-way, bass-reflex type
Speaker units	
Woofer:	15 cm dia., cone type
Tweeter:	5 cm dia., cone type
Nominal impedance	6 ohms

General

Power requirements	
European models:	230 V AC, 50/60 Hz
Mexican model:	120 V AC, 60 Hz
Other models:	120 V, 220 V, 230 – 240 V AC, 50/60 Hz Adjustable with voltage selector

Power consumption	
European models:	100 watts 0.5 watts (at the Power Saving Mode)
Other models:	100 watts

Dimensions (w/h/d) incl. projecting parts and controls	
Amplifier/Tuner/Tape/CD section:	Approx. 215 × 285 × 334 mm
Speaker:	Approx. 205 × 285 × 220 mm

Mass	
Amplifier/Tuner/Tape/CD section:	Approx. 6.5 kg
Speakers:	Approx. 3.0 kg net per speaker

Supplied accessories	Remote (1) R6 (size AA) batteries (2) AM loop antenna (1) FM lead antenna (1) Speaker pads (8)
----------------------	--

Design and specifications are subject to change without notice.

Free Manuals Download Website

<http://myh66.com>

<http://usermanuals.us>

<http://www.somanuals.com>

<http://www.4manuals.cc>

<http://www.manual-lib.com>

<http://www.404manual.com>

<http://www.luxmanual.com>

<http://aubethermostatmanual.com>

Golf course search by state

<http://golfingnear.com>

Email search by domain

<http://emailbydomain.com>

Auto manuals search

<http://auto.somanuals.com>

TV manuals search

<http://tv.somanuals.com>