

# Add-on Application Guide

Personal Entertainment Organizer

CLiÉ

PEG-S360

---

## Chapter 1

Viewing image files  
(PictureGear Pocket)

---

## Chapter 2

Playing a movie  
(gMovie player)

---

## Chapter 3

Setting the "Memory  
Stick" automatic start  
function (MS Autorun)

## On the supplied software

- Copyright laws prohibit reproducing the software or the software manual in whole or in part, or renting the software without the permission of the copyright holder.
- In no event will SONY be liable for any financial damage or loss of profits, including claims made by third parties, arising out of the use of the software supplied with this player.
- In the event a problem occurs with this software as a result of defective manufacturing, SONY will replace it at SONY's option or issue a refund. However, SONY bears no other responsibility.
- The software provided with this player cannot be used with equipment other than that which it is designated for use with.
- Please note that, due to continued efforts to improve quality, the software specifications may be changed without notice.

Program © 2001 Sony Corporation, © 2001 Palm, Inc. or its subsidiaries. All rights reserved.

Documentation © 2001 Sony Corporation

Sony and Walkman are registered trademarks of Sony Corporation, Japan.

Memory Stick, the Memory Stick logo, Jog Dial, OpenMG, and PictureGear are trademarks of Sony Corporation, Japan.

Graffiti, HotSync, PalmModem, and Palm OS are registered trademarks, and the HotSync logo and Palm are trademarks of Palm, Inc. or its subsidiaries.

IBM and PC/AT are registered trademarks of International Business Machines Corporation.

Microsoft, Windows, Outlook and the Windows 98 logo are registered trademarks of Microsoft Corporation.

MMX and Pentium are registered trademarks of Intel Corporation.

AvantGo, the AvantGo Client and the AvantGo logo are registered trademarks of AvantGo, Inc.

Pumatech, the Pumatech log, Intellisync and Intellisync Lite are trademarks of Pumatech, Inc. that may be registered in some jurisdictions.

QuickTime and the QuickTime logo are trademarks used under license. QuickTime is registered in the U.S. and other countries.

This product includes fonts owned by TypeBank Co., Ltd. under license.

All other trademarks are trademarks of their respective owners.

## CAUTION

Please contact your nearest Sony dealer regarding the problem you are experiencing with your Sony product.

# Table of contents

About this manual .....	4
-------------------------	---

## Chapter 1

Viewing image files (PictureGear Pocket)	
<b>What you can do with PictureGear Pocket .....</b>	<b>6</b>
<b>Installing .....</b>	<b>7</b>
Installing the PictureGear 4.3Lite software to your computer .....	7
<b>Viewing image files stored in your CLIÉ handheld .....</b>	<b>8</b>
Transferring image files to your CLIÉ handheld .....	8
Viewing image files with your CLIÉ handheld .....	10
<b>Viewing image files stored in "Memory Stick" media .....</b>	<b>13</b>
Saving DSC image files stored in a "Memory Stick" media to your CLIÉ handheld .....	15
<b>Viewing image files one after another (Slide-Show) .....</b>	<b>17</b>
<b>Viewing sample image files .....</b>	<b>18</b>
<b>How to read the online manual ....</b>	<b>19</b>

## Chapter 2

Playing a movie (gMovie player)	
<b>What you can do with gMovie player .....</b>	<b>22</b>
<b>Installing .....</b>	<b>23</b>
Install PictureGear 4.3Lite software to your computer .....	23
<b>Playing movies with your CLIÉ handheld .....</b>	<b>24</b>
Transferring movies to your CLIÉ handheld .....	24
Playing movies .....	26
<b>Playing sample movie files .....</b>	<b>28</b>
<b>How to read the online manual ....</b>	<b>29</b>
<b>gMovie menu items .....</b>	<b>30</b>

## Chapter 3

Setting the "Memory Stick" automatic start function (MS Autorun)	
<b>What you can do with MS Autorun application .....</b>	<b>32</b>
<b>Setting Auto-run for an Application .....</b>	<b>34</b>
<b>How to read the online manual ....</b>	<b>36</b>
<b>MS Autorun menu items .....</b>	<b>37</b>

# About this manual

Welcome to the Sony Personal Entertainment Organizer (referred to as the “Sony CLIÉ Handheld” or “CLIÉ handheld” in this manual).

Your Sony CLIÉ Handheld comes with three manuals:

## Read This First

The Read This First manual gives an overview of your CLIÉ handheld’s features, hardware and software setup, installation instructions, and other important details. Before reading the rest of the manuals, read the Read This First manual.

## Operating Instructions

The Operating Instructions manual describes all you need to know about how to use your CLIÉ handheld and the Personal Information Management (PIM) applications that come with it.

This manual shows you how to:

- Turn on and off your CLIÉ handheld, reset the CLIÉ handheld, and enter data in greater detail **(Chapter 1)**
- Use the Personal Information Management applications: Date Book, Address Book, To Do List, Memo Pad, and Calculator **(Chapter 2)**
- Perform a HotSync operation with your computer **(Chapter 3)**
- Exchange data with another handheld by beaming or via “Memory Stick” media **(Chapter 4)**
- Personalize your CLIÉ handheld with your own preferences settings **(Chapter 5)**
- Maintain your CLIÉ handheld and use the Troubleshooting guide and other technical information **(Chapter 6)**

## Add-on Applications Guide (this manual)

The Add-on Applications Guide describes how to install and use the supplied add-on applications that include:

- PictureGear Pocket/PictureGear 4.3Lite
- gMovie
- MS Autorun

# ***Chapter 1***

## ***Viewing image files (PictureGear Pocket)***

This chapter describes how to view image files on your CLIE handheld.

---

# What you can do with PictureGear Pocket

PictureGear Pocket is a picture album application for your CLIÉ Handheld.

## **Anytime anywhere...**

Using PictureGear Pocket, you can store still image files from various sources including those taken with a digital camera or those downloaded from the Internet to your CLIÉ handheld. You can look at your favorite image files anytime and anywhere.

## **Using PictureGear Pocket to present your creations**

You can display image files in a sequence using the Slide Show function. PictureGear Pocket helps you make presentations using illustrations drawn on a computer or image files taken with a digital camera.

## **Beaming my image files ...**

Use IR (Infrared) communication to exchange image files easily with other CLIÉ handheld users. You cannot beam image files to other Palm OS based devices.

## **Pasting a image file to an address record**

You can paste an image to address information.

For details, refer to the Operating Instructions manual.

# Installing

## You do not have to install PictureGear Pocket on your CLIÉ handheld

The PictureGear Pocket application is factory pre-installed, you do not have to install it.

## Installing the PictureGear 4.3Lite software to your computer

You can convert the image file stored in your computer using PictureGear 4.3Lite. To view image files or movies with your CLIÉ handheld, use PictureGear Pocket or gMovie player respectively.

- 1** Insert the Installation CD-ROM into the CD-ROM drive.  
The installation launcher window appears.
- 2** Click Install CLIÉ Image Software.  
The dialog box used to select an installation option (Install PictureGear 4.3Lite or QuickTime) appears.
- 3** Click Install PictureGear Lite.  
A confirmation dialog box appears.
- 4** Click Yes.  
The PictureGear 4.3Lite software installation starts.  
Follow the instructions on-screen to finish installation.
- 5** Click Exit.

### To start PictureGear 4.3Lite

From the Start Menu, click Programs (All Programs in Windows® XP), PictureGear 4.3Lite, and PictureGear 4.3Lite.

For details on how to use PictureGear 4.3Lite, see the Help files of the PictureGear 4.3Lite software.

# Viewing image files stored in your CLIÉ handheld

You can transfer image files taken by a digital still camera or downloaded from the Internet, etc. These items can be managed using PictureGear 4.3Lite software on your computer. You can also optimize photos to display on your CLIÉ handheld using PictureGear 4.3Lite software before transferring them to your CLIÉ handheld.

For details on how to save image files in the format supported by PictureGear 4.3Lite software, refer to the instruction manual of the devices or imaging software you are using.

## Transferring image files to your CLIÉ handheld

Prepare image files you want to display on your CLIÉ handheld, then transfer them to your CLIÉ handheld.

### **1** Start PictureGear 4.3Lite.

See page 7 for details.

### **2** Select the image file you want to send.

You can also select multiple slides by holding down the Ctrl or Shift keys while clicking.

### **3** From the File menu, select Output services and then Install the image during the next HotSync.

The User name dialog box appears.

### **4** Click the arrow ▼ to the right of the text box, and then select a user name.

If necessary, click "Still settings" and make size and compression settings for the image file you want to send in the Settings for PictureGear dialog box.

### **5** Click OK.

The image file you want to send and the user are registered in PictureGear.

### **6** Place your CLIÉ handheld in the cradle, then press the HotSync button on the cradle.

The registered image file(s) are automatically sent to the user's CLIÉ handheld during the HotSync operation.



## **When you want to save an image file to “Memory Stick” media**

You can also transfer image files to “Memory Stick” media directly. Select Output CLIÉ Handheld format file to Memory Stick in step 3 on page 8.

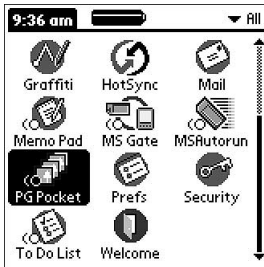
To view image files stored in “Memory Stick” media, see page 13.

# Viewing image files stored in your CLIÉ handheld

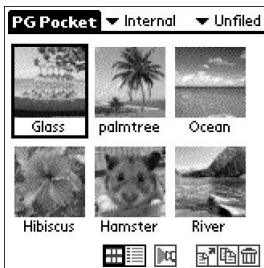
## Viewing image files with your CLIÉ handheld

- 1 On the Application Launcher screen, rotate the Jog Dial navigator to select the PG Pocket and then press the Jog Dial navigator.

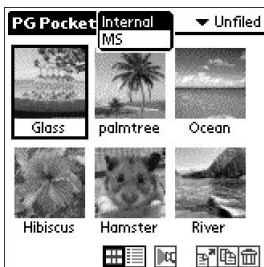
Or, tap the PG Pocket icon on the Application Launcher screen.



PictureGear Pocket starts.



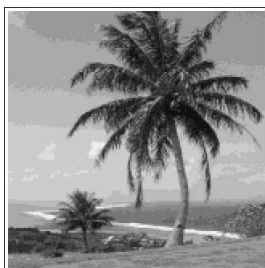
- 2 Tap the arrow ▼ on the top center of the screen to select Internal.






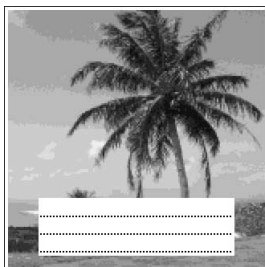
- 3** Rotate the Jog Dial navigator to display the desired image file, then press the Jog Dial navigator.

Or, tap the desired image directly.

The selected image appears.



- 4** When you want to show a memo or detailed information attached to the image file, tap Menu  then tap  (memo) or  (detailed).



Show memo



Show detailed information

In the memo screen, you can view another image file by rotating the Jog Dial navigator.

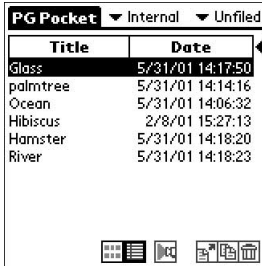
- 5** To return to the photo list screen, tap the screen or press the Jog Dial navigator.

To return from the detailed information screen to the image file list screen, tap Done on the bottom left of the screen or press the Jog Dial navigator.

# Viewing image files stored in your CLIÉ handheld

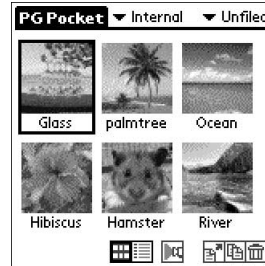
## Changing the image file list screen

You can change the image file list screen to display items by name and date, or by thumbnail image.



Title	Date
Glass	5/31/01 14:17:50
palmtree	5/31/01 14:14:16
Ocean	5/31/01 14:06:32
Hibiscus	2/8/01 15:27:13
Hamster	5/31/01 14:18:20
River	5/31/01 14:18:23

By name and date  
(List mode)



By thumbnail image  
(Preview mode)

### To display the image file list by name and date (List mode)

Tap .

### To display the image file list by thumbnail image (Preview mode)

Tap .

## Viewing image files stored in “Memory Stick” media

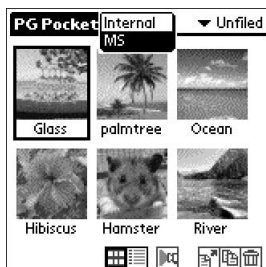
Image files shot by a digital still camera or digital video camera recorder and recorded in a “Memory Stick” media are stored in the DCF (Design rule for Camera File system) format. This format differs from the PGP format which is standard for PictureGear Pocket software.

You can view both PGP format image files and DCF format image files using PictureGear Pocket. In addition, you can convert DCF format image files into PGP format image files, and save them to your CLIÉ handheld or “Memory Stick” media.

- 1** On the Application Launcher screen, rotate the Jog Dial navigator to select PG Pocket and then press the Jog Dial navigator.

Or, tap the PG Pocket icon on the Application Launcher screen. PictureGear Pocket starts.

- 2** Insert the “Memory Stick” media into the “Memory Stick” slot.
- 3** Tap the arrow ▼ on the top center of the screen to select MS.

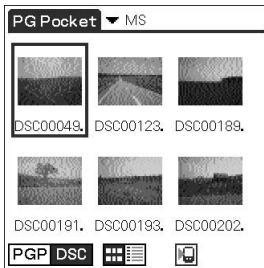


Continued on next page

## Viewing image files stored in “Memory Stick” media

### 4 If you want to view DCF image files taken by the digital still camera etc., tap DSC.

If you want to view image files converted by the PictureGear Pocket or PictureGear 4.3Lite software, tap PGP.





#### Note

You cannot move, copy, delete or transfer DCF format image files using the MS Gate application. However, you can convert them into PGP format image files using PictureGear Pocket, and save them to your CLIE handheld.

#### Notes on DCF format

- DCF (Design rule for Camera File system) is an industry standard format for storing image files established by JEIDA (Japan Electronic Industry Development Association).
- Using the PictureGear Pocket application, you cannot view image files shot by a device that does not support the DCF format such as the Sony digital video camera recorder DCR-TRV9000 or Sony digital still camera DSC-D700/D770.
- DCF format image files are stored in the DCIM directory of the “Memory stick” media.
- PictureGear Pocket displays thumbnail images (160 by 120 pixels) of DCF format image file. Therefore, the display quality is inferior to the real picture.
- In order to display clearer pictures with PictureGear Pocket, it is recommended that you use PictureGear Lite on your computer when converting the image files to PGP format before storing them in a “Memory stick” media.

## Saving DSC image files stored in a “Memory Stick” media to your CLIÉ handheld


- 1** Display the DSC photo you want to save.
- 2** Tap Menu  then the  (Save) icon shown at the bottom of the screen.  
The confirmation dialog appears.
- 3** Tap OK.  
The selected image file is converted in the PGP format and saved to the CLIÉ handheld.

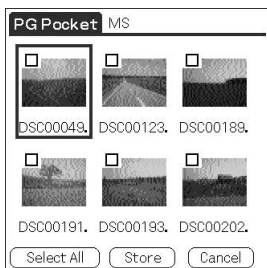
### To stop saving

Tap Cancel in step 3 above.

## Viewing image files stored in "Memory Stick" media

### Saving multiple DSC image files to your CLIÉ handheld at once

- 1** In the photo list screen, tap  (Store).  
The check boxes for each image file appear.




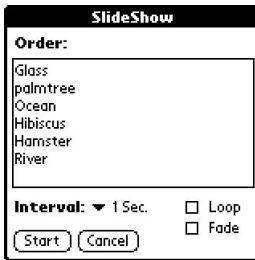
- 2** Tap the check box to select the image file you want to save.
- 3** Tap STORE.  
The confirmation dialog box appears.
- 4** Tap OK.  
The selected image file is converted to the PGP format and then saved to your CLIÉ handheld.



## Viewing image files one after another (Slide-Show)

You can view all image files in a particular category one after another (slide-show).

- 1 Select the category you want to view in the slide-show.
- 2 On the image file list screen, tap .  
The slide-show screen appears.



- 3 Make the desired setup.
  - **Interval:** set interval to determine the length of time an individual image file will be displayed.
  - **Loop:** if you want to repeat the slide-show automatically from the start, tap to select this check box.
  - **Fade:** if you want to set the fade effect in the image file transition, tap to select this check box.
- 4 Tap Start.  
Image files in the selected category appear one after another.
- 5 To exit the slide-show, press the Jog Dial navigator or tap the screen.  
The slide-show ends.

### Changing the displayed order

On the slide-show screen, drag the image file name to the desired position.

---

## Viewing sample image files

You can view sample image files installed on your computer.  
Install the CLIÉ Palm Desktop software to your hard disk using the supplied CD-ROM and then place your CLIÉ handheld in the cradle.

- 1** Double-click the Palm Desktop for CLIÉ icon on the Windows desktop.  
The Palm Desktop for CLIÉ software starts.
- 2** Click Install.  
The Install Tool dialog box appears.
- 3** Select a user name from the user list.
- 4** Click Add.  
Make sure that the Add-on folder is selected.  
If the Add-on folder is not selected, select the folder manually.  
At the default setup, Add-on folder is stored in the Sony Handheld folder of the Program Files folder.
- 5** Double-click the PG Pocket samples folder.
- 6** Double-click the sample image file you want to view on the screen of your CLIÉ handheld.  
The selected image file name is added to the File Name list.  
If you want to other sample images, repeat this step.
- 7** Click Done.
- 8** Press the HotSync button on the cradle.  
The selected sample image files will be installed on your CLIÉ handheld.
- 9** Start PictureGear Pocket.  
For details, see page 10.

# How to read the online manual

The detailed information of the PictureGear Pocket software is provided with the online manual in the supplied CD-ROM.

To see the online manual, the Adobe Acrobat Reader software must be installed on your computer.

- 1** Insert the supplied CD-ROM into your computer's CD-ROM drive.

The install screen appears automatically.

- 2** Click Manuals.

- 3** Double-click PictureGear Pocket Manual.pdf.

The online manual appears.

## If the Acrobat Reader software is not installed

- 1** Insert the supplied CD-ROM into your computer's CD-ROM drive.

The install screen appears automatically.

- 2** Click Exit.

- 3** Double-click the My Computer icon on the Windows desktop.

- 4** Right-click the CD-ROM drive icon, and then click Open from the shortcut menu.

- 5** Double-click the PC folder.

- 6** Double-click the Acrobat folder.

- 7** Double-click ar500enu.exe to install the Acrobat Reader onto your computer.



# ***Chapter 2***

## ***Playing a movie (gMovie player)***

This chapter describes how to play a movie on your CLÍÉ handheld.

---

## What you can do with gMovie player

gMovie is an application which allows you to display or play back video data created using Windows® applications such as PictureGear 4.3Lite, on your CLIÉ handheld.

### Playing movies on your CLIÉ handheld

You can play a movie that has been converted to the proper format and then transferred from your computer, or stored in the "Memory Stick" media.

You can enjoy your favorite movies anytime, anywhere.

---

# Installing

**You do not have to install gMovie player on your CLIÉ handheld**

The gMovie player application is factory pre-installed, you do not have to install it.

## Install PictureGear 4.3Lite software to your computer

Install PictureGear 4.3Lite software to your computer according to the instructions on page 7.

# Playing movies with your CLIÉ handheld

You can transfer movies shot by a digital still camera or downloaded from the Internet, etc., which are managed by the PictureGear 4.3Lite software on your computer. You will need to optimize movies on your CLIÉ handheld by the PictureGear 4.3Lite software before transferring. For details of operations or how to save the movies in the format which is supported by the PictureGear 4.3Lite, refer to the online Help of the PictureGear 4.3Lite.

## Transferring movies to your CLIÉ handheld

Prepare the items you want to display on your CLIÉ handheld, then transfer them to your CLIÉ handheld.

### **1** Start PictureGear 4.3Lite.

See page 7 for details.

### **2** Select the movie you want to send.

You can also select multiple slides by holding down the Ctrl or Shift keys while clicking.

### **3** From the File menu, select Output services and then Install the image during the next HotSync.

The User name dialog box appears.

### **4** Click the arrow ▼ to the right of the text box, then select a user name.

If necessary, click Movie settings and make size and compression settings for the image you want to send in the "Settings for Movies on CLIÉ Handheld" dialog box.

### **5** Click OK.

The slides you want to send and the user name are registered in PictureGear.

### **6** Place your CLIÉ handheld in the cradle, and then press the HotSync button on the cradle.

The registered slide(s) are automatically sent to the user's CLIÉ handheld during the HotSync operation.



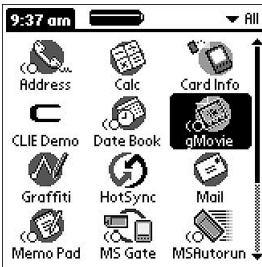
## When you want to save a movie to the “Memory Stick” media

You can also transfer the movie to the “Memory Stick” media directly. Select “Output CLIE format file to Memory Stick” in step 3 on page 24.

## Playing movies with your CLIE handheld

### Playing movies

- 1 On the Application Launcher screen, rotate the Jog Dial navigator to select gMovie and then press the Jog Dial navigator.




Or, tap the gMovie icon on the Application Launcher screen. gMovie player starts and the movie list screen appears.

- 2 Tap the movie you want to play. Playback starts.




#### To stop playback


Tap  (Stop).

To resume playback, tap  (Play).


#### To locate the start point of the movie

Tap  (Locate).


### To return to the movie list screen


Tap  (Return) at the upper-right corner of the screen.


### To play the next movie

Tap  (Next) at the upper-right corner of the screen.


### To play movies one after another (continuous playback)

Tap  (Next) at the upper-right corner of the screen for a few seconds.

The icon changes into  (Continuous) and movies stored in your CLIE handheld are played one after another.

To return to the normal playback, tap  (Continuous) for a few seconds.

### To delete a movie

- 1** Display the movie you want to delete, then tap Menu .
- 2** Tap Delete.
- 3** Tap OK.  
The selected movie is deleted, and then the movie list screen appears.

---

# Playing sample movie files

You can view sample movie files installed on your computer.  
Install the Palm Desktop for CLIÉ software to your hard disk using the supplied CD-ROM and then place your CLIÉ handheld in the cradle.

- 1** Double-click the Palm Desktop for CLIÉ icon on the Windows desktop.  
The Palm Desktop for CLIÉ software starts.
- 2** Click Install.  
The Install Tool dialog box appears.
- 3** Select a user name from the user list.
- 4** Click Add.  
Make sure that the Add-on folder is selected.  
If the Add-on folder is not selected, select the folder manually.  
At the default setup, Add-on folder is stored in the Sony Handheld folder of the Program Files folder.
- 5** Double-click the gMovie samples folder.
- 6** Double-click the sample movie file you want to play on the screen of your CLIÉ handheld.  
The selected movie file name is added to the File Name list.  
If you want to view other sample movies, repeat this step.
- 7** Click Done.
- 8** Press the HotSync button on the cradle.  
The selected sample movie files will be installed on your CLIÉ handheld.
- 9** Start gMovie player.  
For details, see page 26.

## How to read the online manual

Detailed information on gMovie player software is provided in the online manual on the supplied CD-ROM.

To see the online manual, the Adobe Acrobat Reader software must be installed on your computer.

- 1** Insert the supplied CD-ROM into your computer's CD-ROM drive.

The install screen appears automatically.

- 2** Click Manuals.

- 3** Double-click gMovie Manual.pdf.

The online manual appears.

### If the Acrobat Reader software is not installed

- 1** Insert the supplied CD-ROM into your computer's CD-ROM drive.

The install screen appears automatically.

- 2** Click Exit.

- 3** Double-click the My Computer icon on the Windows desktop.

- 4** Right-click the CD-ROM drive icon, and then click Open from the shortcut menu.

- 5** Double-click the PC folder.

- 6** Double-click the Acrobat folder.


- 7** Double-click ar500enu.exe to install the Acrobat Reader onto your computer.

# gMovie menu items

The following items appear when you tap the MENU icon while the movie file is displayed on your CLIÉ handheld screen.


This section describes the menu commands specific to gMovie.

## Media menu

When you tap Menu  in the media list screen, following items appear.

### About gMovie

Shows version information of the gMovie application.

When you tap Menu  in the movie file screen, following items appear.

### Details

Shows detailed information on the current media.

### Beam Media

Transfer the data contained in the current media to another CLIÉ handheld via the IR port. For details about beaming, see the Operating Instructions manual supplied with the CLIÉ handheld.

### Delete



Deletes the current media. Tap OK in the Delete Media dialog box to perform deletion. Tap Cancel to cancel deletion.

### Preferences

Displays options for movie playback option available:

#### Loop movie playback:

if you want to play the current movie file repeatedly, tap to select this check box.

When you tap to clear the check box, you cannot play the next movie file by tapping  (Next) at the upper-right corner of the screen. In this case, tap  (Play) manually to play the movie file.

### About gMovie

Shows version information of the gMovie application.

# ***Chapter 3***

## ***Setting the “Memory Stick” automatic start function (MS Autorun)***

This chapter describes how to set the “Memory Stick” automatic start function on your CLIE handheld.

When you want to start an application in the “Memory Stick” media from the Application Launcher screen, refer to the Operating Instructions manual.

# What you can do with MS Autorun application

“Memory Stick” Autorun (hereafter referred to as MS Autorun) is an application which allows your CLIÉ handheld to copy and start a specified application automatically when “Memory Stick” media is inserted into the CLIÉ handheld. Removing the “Memory Stick” media automatically deletes the application copy from the memory of the CLIÉ handheld. MS Autorun functions as virtual memory to effectively utilize the memory of the CLIÉ handheld.

## **Starting an application (.prc) on the CLIÉ handheld automatically**

When you use a digital still camera that is compatible with “Memory Stick” media, you can view your images by inserting the “Memory Stick” media into the CLIÉ handheld. In this example, you would use the auto-run setting to start the PictureGear Pocket application on your CLIÉ handheld.

## **Starting an application (.prc) in a “Memory Stick” media automatically**

This setting is for automatically starting an application which does not access any data, such as game applications, or an application which accesses data in the CLIÉ handheld (not in the “Memory Stick” media).

## **Starting a pre-selected application (.prc) and related database files (.pdb, .prc) in a “Memory Stick” media\***

This setting automatically displays a specific image or file with an application such as an image viewer or a document reader. You need to specify an application and the related database files before using this auto-run setting.

## **Starting an application (.prc) on the CLIÉ handheld automatically with specific database files (.pdb, .prc) from a “Memory Stick” media\***

This setting is used when the application is located on the CLIÉ handheld and the corresponding database files are located on a “Memory Stick” media. You can also display the desired data automatically by inserting the “Memory Stick” media into your CLIÉ handheld.

\* If you specify PictureGear Pocket as an auto-run application, tap the arrow ▼ on the top center of the screen in PictureGear Pocket to select “MS.” Likewise, if you specify gMovie player as an auto-run application, tap the movie file you want to play.



**Notes**

- It is not recommended that you use the MS Autorun application with the Address Book, Date Book, To Do List, Memo Pad, Calculator or Mail application. Problems may occur if the data of these applications do not reside on your CLIÉ handheld when you perform HotSync operation.
- The specified application may not start automatically depending on the application in use when you insert the "Memory Stick" media into your CLIÉ handheld. In this case, return to the Application Launcher screen, and then insert the Memory Stick media again.

**You do not have to install MS Autorun on your CLIÉ handheld**


The MS Autorun application is factory pre-installed, you do not have to install it.

# Setting Auto-run for an Application

To automatically start an application stored in a Memory Stick media, perform the following procedure.

## Note

This procedure is an example to set the PictureGear Pocket application to start automatically. In this case, a Memory Stick media containing photos must be inserted to the CLIÉ handheld.

- 1** Install an application you want to start automatically (PictureGear Pocket) on the CLIÉ handheld.  
The PictureGear Pocket application is preinstalled in some series of the CLIÉ handheld, including this model.
- 2** Insert the "Memory Stick" media for which you want to set the autorun function into the "Memory Stick" slot.
- 3** On the Application Launcher screen, rotate the Jog Dial navigator to select MSAutorun and then press the Jog Dial navigator.  
MS Autorun starts.  
Or, tap MSAutorun icon on the Application Launcher screen.
- 4** Press the Jog Dial navigator.  
The application list in your CLIÉ handheld appears.
- 5** Tap the application (PictureGear Pocket) for which you want to set the auto-run function.
- 6** Tap Set.  
The setting is stored in the "Memory Stick" media, and the confirmation dialog box appears.
- 7** Tap OK.  
The auto-run setting is completed.
- 8** Tap Home  to return to the Application Launcher screen.
- 9** Remove the "Memory Stick" media.

## To use the auto-run function with this example

When the Application Launcher screen is displayed and you insert "Memory Stick" media into your CLIÉ handheld, the PictureGear Pocket application starts automatically.

In this case, if you remove the "Memory Stick" media, the PictureGear Pocket quits automatically and the Application Launcher screen appears.

For further operation, refer to the online manual for the MS Autorun.

### Note

If "Internal" is displayed at the top center of the PictureGear Pocket screen during operation described above, the image files stored in your CLIÉ handheld are displayed.

To view image files stored in the "Memory Stick" media, tap the arrow ▼ on the top center of the screen to select "MS."

---

# How to read the online manual

Detailed information on MS Autorun software is provided in the online manual on the supplied CD-ROM.

To see the on line manual, the Adobe Acrobat Reader software must be installed on your computer.

- 1** Insert the supplied CD-ROM into your computer's CD-ROM drive.

The install screen appears automatically.

- 2** Click Manuals.

- 3** Double-click MSAutorun Manual.pdf.

The online manual appears.

## If the Acrobat Reader software is not installed

- 1** Insert the supplied CD-ROM into your computer's CD-ROM drive.

The install screen appears automatically.

- 2** Click Exit.

- 3** Double-click the My Computer icon on the Windows desktop.

- 4** Right-click the CD-ROM drive icon, and then click Open from the shortcut menu.

- 5** Double-click the PC folder.

- 6** Double-click the Acrobat folder.

- 7** Double-click ar500enu.exe to install the Acrobat Reader onto your computer.

# MS Autorun menu items

The following items appear when you tap the MENU icon.

This section describes the menu commands specific to the MS Autorun application.

## Options menu

### Display log

When Memory Stick media is inserted into or removed from your CLIE handheld, a history log is created. From the Options menu, you can view this information by tapping Display log.

### Tools

The following buttons appear in the Tools dialog box:

- **Recover:**

This button is displayed if the auto-run function is performed and the MS Autorun application is started without removing the Memory Stick media. You can delete the application and database files copied into your CLIE handheld.

- **Delete autorun setting:**

This button is displayed if the auto-run setting file is stored in the inserted Memory Stick media. You can delete the auto-run setting in the Memory Stick media.

### Preferences

Displays the Preferences dialog box.

The following items appear on this dialog box:

- **Autorun:**  **Disable:**

You can temporarily cancel the auto-run function.

- **MS List:**

You can switch the format of the list of data in Memory Stick media.

### About MS Autorun

The version information of the MS Autorun application is displayed.





For the latest support information,  
check our official Sony CLIE Web site

**<http://www.sony.com/clie>**

<http://www.sony.net/>



## Free Manuals Download Website

<http://myh66.com>

<http://usermanuals.us>

<http://www.somanuals.com>

<http://www.4manuals.cc>

<http://www.manual-lib.com>

<http://www.404manual.com>

<http://www.luxmanual.com>

<http://aubethermostatmanual.com>

Golf course search by state

<http://golfingnear.com>

Email search by domain

<http://emailbydomain.com>

Auto manuals search

<http://auto.somanuals.com>

TV manuals search

<http://tv.somanuals.com>