

CRZNAUX2

SoundGate

Purpose

The SoundGate CRZNAUX2 lets you connect a Zune™ digital media player directly to the factory radio in the Chrysler Corporation vehicles listed below. The CRZNAUX2 supplies power, charges, and provides direct audio input for your Zune Device



Features

The SoundGate CRZNAUX2 utilizes sophisticated microprocessor control, ultra-reliable surface-mount construction, and advanced software design to flawlessly integrate with Chrysler audio systems. Your Zune device's audio can be selected from your factory radio's controls. An optional remote control (sold separately) allows control of all Zune device functions.

The CRZNAUX2 works in the following vehicles:

CHRYSLER

300M	1999-2004
Concorde	1998-2004
LHS	1999-2003
PT Cruiser	2000-2005
Sebring	2001-2006
Town and Country Van	2001-2006

DODGE

Dakota	2001-2004
Durango	2001-2003
Grand Caravan	2001-2006
Intrepid	1998-2004

DODGE (CONTINUED)

Neon / SRT	2000-2005
Ram Pickup 1500/2500/3500	2002-2005
Stratus	2001-2005

JEEP

Grand Cherokee	1999-2004
Liberty	2002-2005
Wrangler	2003-2005

PLYMOUTH

Prowler	2002
---------	------

Simple-fi.™

If you experience problems, call SoundGate Technical Support at +1-800-256-0808, or email us at sgtech@soundgate.com.

www.soundgate.com

Rev 20080404

WARNING

DO NOT DISASSEMBLE OR ALTER

Doing so may result in an accident, fire, or electric shock.

Do not block your view

Do not mount product or any added audio/video equipment where it can block your view through the windshield or block your view of dashboard indicators and displays.

Do not block safety devices

Do not mount product or any added audio/video equipment where it can obstruct the operation of any safety device, such as the airbag.

Distraction warning

Do not allow product or any added audio/video equipment to distract you while you are driving.

BEFORE WIRING, DISCONNECT THE CABLE FROM THE NEGATIVE BATTERY TERMINAL

Before starting any installation work, wait 90 seconds after turning the ignition switch to the LOCK position and disconnecting the negative (-) terminal from the battery. The supplemental restraint system (SRS), or airbag(s) is equipped with a backup power source. If installation work is started less than 90 seconds after disconnection of the negative (-) battery terminal, the SRS may deploy. When the negative (-) terminal cable is disconnected from the battery, the clock and audio systems' memory may be erased. Before starting installation work, make a record of the clock and audio systems' memory settings. When installation is complete, reset the clock and audio systems to their previous settings. Power tilt, power telescopic steering column, power seats, power mirrors, power shoulder belt anchorage, and other power accessories may or may not be equipped with a memory function; consider keeping a record of these settings as well.

When installation is complete, readjust the features to their previous settings.

Never use a backup power supply (such as another battery) during installation work in an attempt to avoid losing these memory settings.

CAUTION

DO NOT ALLOW CABLES TO BECOME ENTANGLED IN SURROUNDING OBJECTS

Cables or wiring that obstruct or get caught on places such as the steering wheel, shift lever, brake pedals, etc. can be extremely hazardous.

DO NOT INSTALL IN LOCATIONS WITH HIGH MOISTURE OR DUST

Moisture or dust may result in product failure.

HAVE THE WIRING AND INSTALLATION DONE BY EXPERTS

The wiring and installation of this product requires special technical skills and experience.

USE ONLY SPECIFIED ACCESSORY PARTS

Use of other than specified parts may damage product internally.

FOLLOW THE OPERATIONAL AND INSTALLATION MANUALS.

YOU SHOULD READ AND FAMILIARIZE YOURSELF THOROUGHLY WITH THE FOLLOWING INFORMATION PRIOR TO INSTALLING AND USING THIS UNIT. IN ADDITION, YOU MUST CAREFULLY READ AND FOLLOW THE INSTALLATION SCHEMATICS AND INSTRUCTIONS FOR THE PRODUCT AND THE VEHICLE IN WHICH IT IS BEING INSTALLED. FAILURE TO FOLLOW INSTALLATION INSTRUCTIONS MAY DAMAGE THE PRODUCT AND THE VEHICLE, WILL VOID THE PRODUCT WARRANTY, AND MAY VOID THE VEHICLE WARRANTY.

CHECK YOUR LOCAL LAWS

Some States/Provinces or other governmental jurisdictions (such as cities) may have laws that prohibit the operation of a video screen within the sight of the driver. If you have purchased such a product, you should use the product only in locations where it is legal to do so, and if you do use the product, set up the screen so it is only visible to passengers.

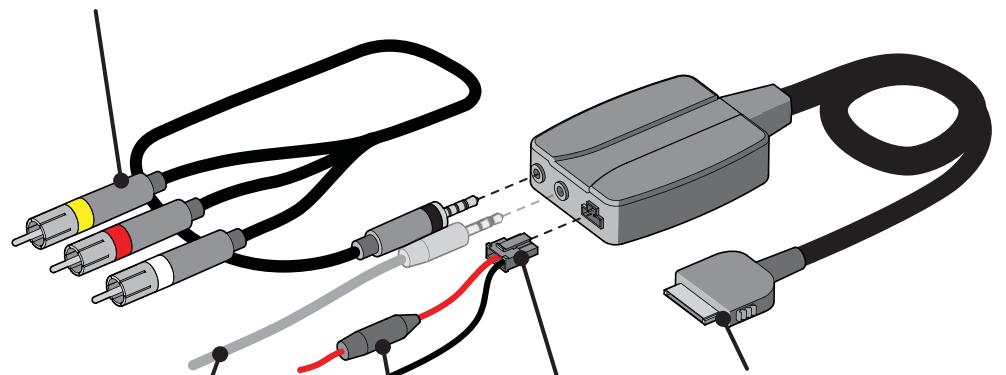
TROUBLESHOOTING

Should this product fail to operate properly, please contact your Dealer or SoundGate Technical Support via email at sgtech@soundgate.com or via phone at +1-800-256-0808.

CRZNAUX2 Overview

RCA component A/V outputs. Connect the audio outputs to the matching locations of the CRZNAUX2 components on the next page.

Yellow = Video
Red = Audio Right
White = Audio Left

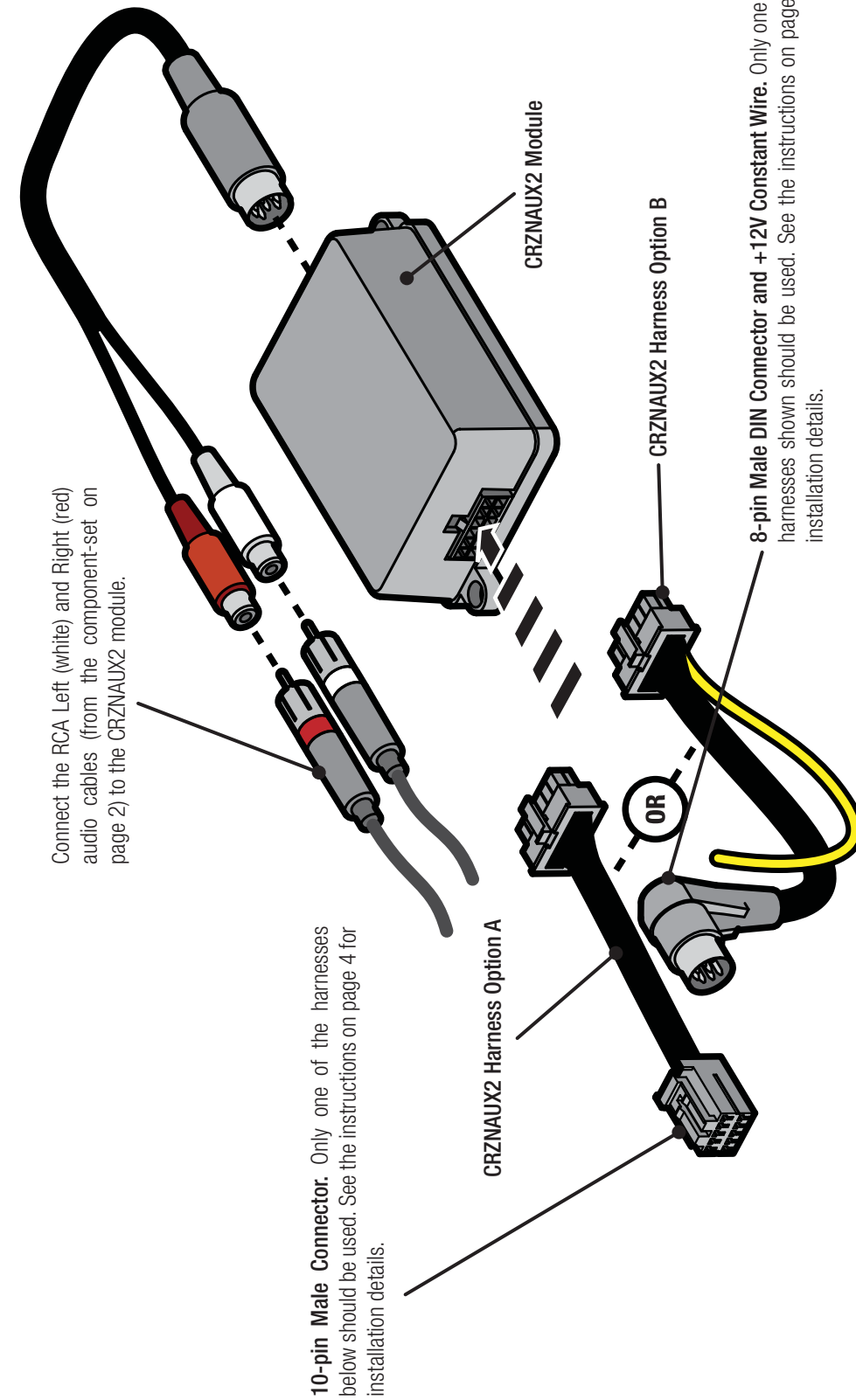


Zune Dock Connector. Connect to Zune™ digital media player.

Optional remote control (available separately). Allows full control of a connected Zune device's functions.

Power connector. Connect black wire to bare-metal chassis. Connect red wire to a +12V switched (ignition) power source.

Inline fuse. The red wire of the power connector is fused to protect your Zune device and vehicle systems. This wire requires a 12V, 1500mA fuse.



Connect the RCA Left (white) and Right (red) audio cables (from the component-set on page 2) to the CRZNAUX2 module.

10-pin Male Connector. Only one of the harnesses below should be used. See the instructions on page 4 for installation details.

8-pin Male DIN Connector and +12V Constant Wire. Only one of the harnesses shown should be used. See the instructions on page 4 for installation details.

BEFORE YOU BEGIN:

1. Turn the ignition off.
2. Ensure the factory radio is turned off.

Installation

STEP 1 Gain access to the factory radio's rear panel. The CRZNAUX2 connects directly to the rear panel of the factory radio. Full or partial disassembly of the dash will be necessary. If you are unsure of this procedure, please consult a factory service manual or have the work performed by a mobile electronics specialist. Pay special attention to warnings or instructions regarding working near airbags, other safety devices, or security systems.

STEP 2 Connect the appropriate CRZNAUX2 harness to the factory radio. The CRZNAUX2 comes with two vehicle-specific harnesses. Carefully review both harness options on page 3 and compare both harnesses with the connectors on your factory radio's rear panel. Use the harness that matches your radio's connectors. Plug the male connector of the appropriate CRZNAUX2 harness into the matching location on the factory radio's rear panel.

If your vehicle requires **Harness Option B**, shown on page 3, you must also connect the attached yellow wire. Connect the yellow wire to a constant +12V power source (vehicle battery). We **DO NOT** recommend the +12V constant in the factory radio harness due to the possibility of excessive voltage drop during vehicle starting.

STEP 3 Assemble the components shown on page 2 and connect them to the CRZNAUX2 module. Use the diagrams on pages 2 and 3 to assemble the components that will connect to and control your Zune device.

Power connector wiring. Connect the black wire of the power connector shown on page 3 to a clean, bare-metal chassis ground. When in doubt, measure the resistance between potential grounding points and the vehicle battery using a multimeter. Choose a grounding point with equivalent resistance as other grounded components in the audio system. Connect the red wire to a +12V switched (ignition) power source. This wire requires a 12V, 1500mA inline fuse. MAKE CERTAIN THAT REPLACEMENT FUSES MATCH THESE SPECIFICATIONS.

STEP 4 Mount all components. Mount the CRZNAUX2 module behind or under the dash (mounting hardware not included). Be careful not to drill into wiring or vehicle mechanisms. You are solely responsible for securely fastening the CRZNAUX2 in your vehicle. Make certain that wires and cables cannot be damaged by screws, clips, or sharp, exposed pieces of metal.

Ensure that the Zune dock connector is left in a convenient place for connection to your Zune device. Plug the Zune dock connector in straight. Do not insert the connector at an angle or wiggle the connector during insertion.

Please read the **Operation** section on the following page and test the installation before reassembling the vehicle dash, trim panels, and audio systems.

Controlling your Zune device

The CRZNAUX2 will not provide control of your Zune device unless you attach the optional remote, which is available separately. Please visit www.soundgate.com or your local mobile audio dealer for details on the CRZNAUX2 remote's availability.

Activating the CRZNAUX2

1. Turn on the ignition and factory radio.
2. Ensure that your Zune device is connected and playing audio.
3. Wait several seconds for the factory radio and the CRZNAUX2 to synchronize. Press the **MODE** button on your factory radio.

*The factory radio's display will report **Disc 1, Track 1**—you should hear audio from your Zune device through your vehicle's audio system.*

NOTE

If the radio's display does not report **Disc 1, Track 1** after pressing the **MODE** button and you do not hear music from your Zune device, turn the radio and ignition off. Disconnect the CRZNAUX2 harness from the factory radio's rear panel. Wait 30 seconds, then reconnect the harness. Repeat steps 1–3 above.

This initialization process, if necessary at all, will only need to be performed during the initial installation.

4. To deactivate the CRZNAUX2 and switch your radio back to its normal mode, simply press the **MODE** button.



Why SoundGate Dealers have the edge...

The technologies used in today's vehicles are as sophisticated as any laptop computer. At SoundGate we believe these new technologies are full of opportunities for mobile electronic dealers across the nation. We make it a high priority to not only research these new systems, but to understand them and their impact on the aftermarket car audio industry. Armed with this knowledge, we are well equipped to help you integrate new components into these systems with our innovative, high-performance interfaces and unparalleled technical support.

Ask your autosound specialist about these other exciting SoundGate products...

- Auxiliary Input Interfaces and Docking Stations which allow you to input audio from MP3 Players, DVD/Video, Satellite Radio, and more to OEM and aftermarket car audio systems
- High-performance Radio Replacement
- Interfaces for seamlessly integrating new receivers or CD players into OEM audio systems
- Competition-Grade Interfaces for adding amplifiers
- Remote Audio Control Interfaces that let you control aftermarket receivers and CD players from your factory rear seat, or steering-wheel mounted audio controls.
- And many others!

Simple-fi.™

www.soundgate.com

Zune™ and the Zune™ logo are trademarks of the Microsoft group of companies.

Copyright© 2004-2008 SoundGate®. All Rights Reserved. SoundGate® is a registered trademark of Stillwater Designs, Inc. All other trademarks are the property of their respective owners.

Free Manuals Download Website

<http://myh66.com>

<http://usermanuals.us>

<http://www.somanuals.com>

<http://www.4manuals.cc>

<http://www.manual-lib.com>

<http://www.404manual.com>

<http://www.luxmanual.com>

<http://aubethermostatmanual.com>

Golf course search by state

<http://golfingnear.com>

Email search by domain

<http://emailbydomain.com>

Auto manuals search

<http://auto.somanuals.com>

TV manuals search

<http://tv.somanuals.com>