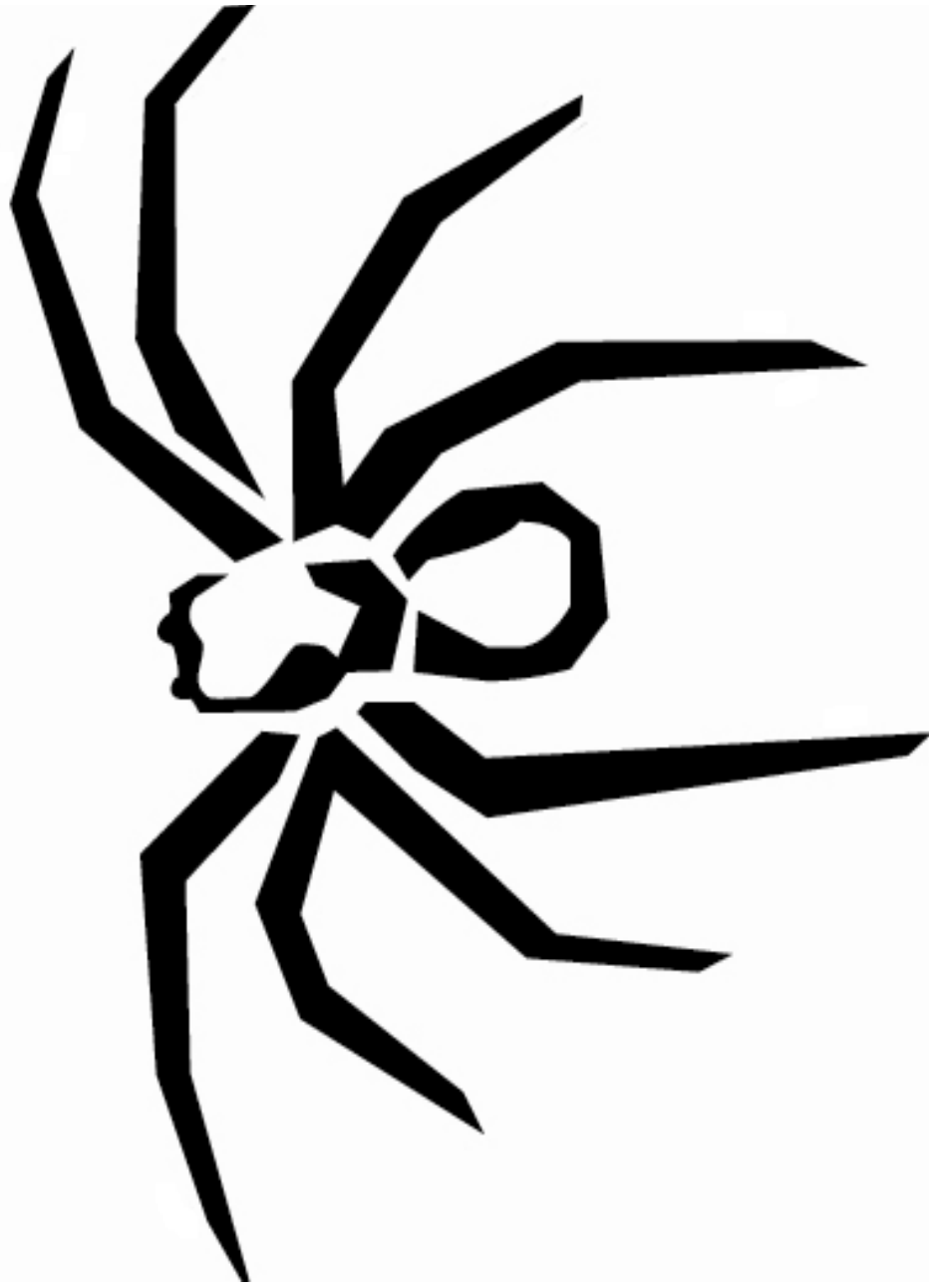


**SOUNDSTREAM**

T E C H N O L O G I E S

*Reference R1*

Woofers & Enclosure  
Information



Congratulations on your new Soundstream sub-woofer purchase. We greatly appreciate your business. This may look like is a run of the mill cardboard box, but is actually a protective barrier over one of the finest engineered and assembled subwoofer available.

*Harmonic Indulgence... Listen and Feel*

### Theil/Small Parameters & Specifications

series wired	R1-12L	R1-15L
Fs	21.50	23.7
Qms	9.210	13.4
Vas (ft <sup>3</sup> )	2.863	4.825
Cms (mm/N)	.220	.14
Mms (g)	249.5	317.2
Rms (kg/s)	3.654	3.52
Xmax (mm)	12.70	12.7
Sd (in <sup>2</sup> )	79.16	127.7
Qes	.490	.65
Re	6.80	6.80
Z	8	8
BL (Telsa)	21.60	22.16
RMS Power	800	900
Qts	.418	.620
1w/1m SPL	84.15	86.40
Depth	7.50	8.750
Cutout Dia.	11.125	14.250
Voice Coil	3" DVC 4Ω	3" DVC 4Ω

### Enclosure Dimensions

Soundstream does not provide enclosure dimensions as there are infinite variables when designing a box, i.e. vehicle, amplifier, music preferences, etc... For designs tailored to your specific needs, please contact us at [tech-support@soundstream.com](mailto:tech-support@soundstream.com)

### Enclosure Construction

All enclosures should be made of .75" (3/4") material only. When possible, make the baffle 1.5" (1 1/2) thick and add .75" (3/4") to the depth of the enclosure to compensate. All volumes **INCLUDE** vent/port and subwoofer displacements. **DO NOT** change the volume unless you plan on adding a substantial amount of bracing. For added performance, applying a coat of fiberglass resin to the interior walls will greatly improve sealing the enclosure. Adding a thin layer of poly-fill will improve response by smoothing out reflections within the enclosure

### Enclosure Recommendations

Reference R1-12 Sealed				Reference R1-15 Sealed		
	Vol.	Qtc	F3	Vol.	Qtc	F3
Min	1	.690	43	1.5	.870	41
Opt	1.5	.610	41	2	.800	39
Max	2	.570	40	2.5	.750	37

Reference R1-12 Ported					Reference R1-15 Ported			
	Vol.	Port	FB	F3	Vol.	Port	FB	F3
Min	2	4x14.5	34	29	3	(2) 3x9.5	34	30
Opt	3	(2) 3x11	32	26	4	(2) 4x15.5	32	27
Max	4	(2) 4x17.5	31	25	5	(2) 4x16.5	28	24

## Free Manuals Download Website

<http://myh66.com>

<http://usermanuals.us>

<http://www.somanuals.com>

<http://www.4manuals.cc>

<http://www.manual-lib.com>

<http://www.404manual.com>

<http://www.luxmanual.com>

<http://aubethermostatmanual.com>

Golf course search by state

<http://golfingnear.com>

Email search by domain

<http://emailbydomain.com>

Auto manuals search

<http://auto.somanuals.com>

TV manuals search

<http://tv.somanuals.com>