

INSTALLATION GUIDE



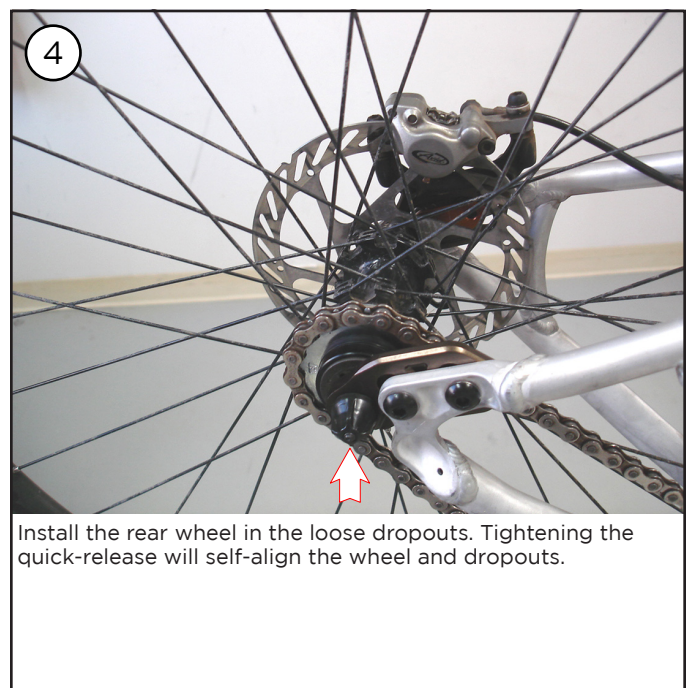
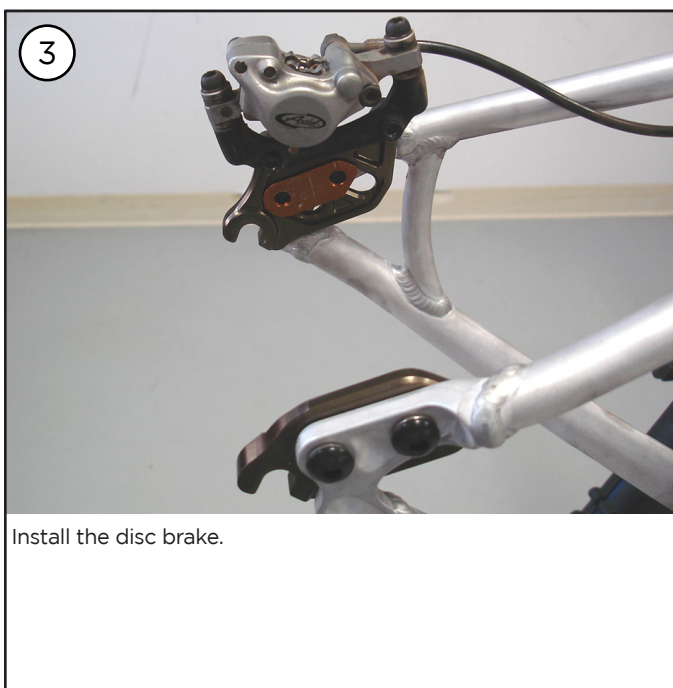
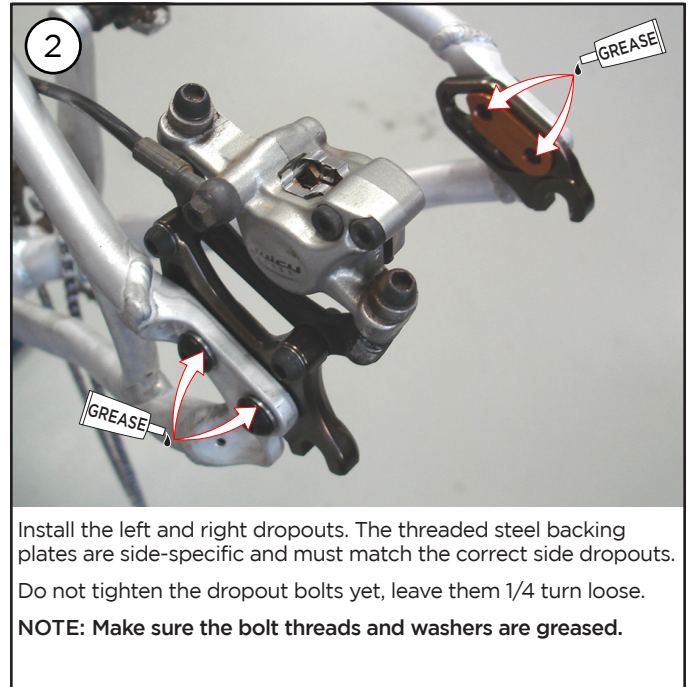
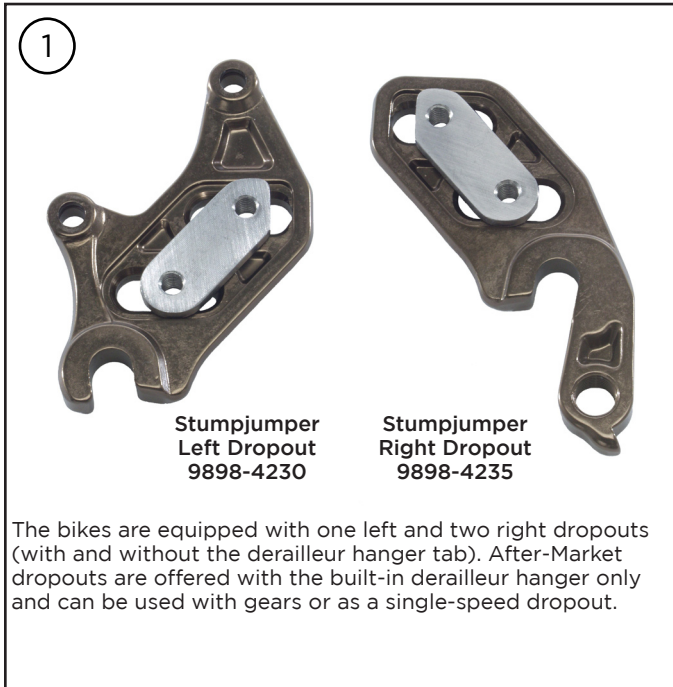
SUBJECT: Stumpjumper Adjustable Dropout Installation

FROM: Engineering Department

DATE: 06/22/07

SPECIALIZED To ensure correct installation of the adjustable dropouts, please read and familiarize yourself with the following steps:

Please read the following instructions. If you have any doubt regarding your mechanical ability and/or installation of this product, visit your local authorized dealer. Specialized recommends that the dropouts be installed using a torque wrench, by a qualified mechanic.



INSTALLATION GUIDE



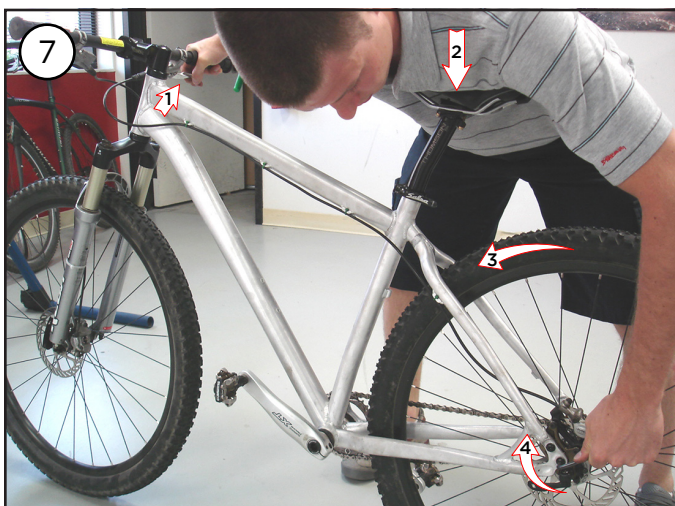
Single-Speed style: Pull the wheel backward, so that the chain is properly tensioned.

Derailleur style: Push the wheel all the way forward.

Make sure the tire is centered between the chainstays.



Tighten the two drive side bolts so that they're fixed, but not torqued to specification yet.



Apply downward force with body weight on the saddle and apply the rear brake, then roll the bike forward slightly. This will rotate the dropout as far forward as possible, so that the dropout won't be able to rotate under braking while riding.

Once the brake and dropout are rotated, make sure the wheel is still centered, then tighten the left dropout so that it's fixed.



Torque the drive side and non-drive side bolts to 250 in-lbf.

NOTE: Do not use a multi-tool or 3-way Allen key to torque the bolts, they will not apply a high enough torque. Only use a torque wrench, or a long handle Allen key that can apply the same torque as a torque wrench.

WARNING! Insufficient torque may damage the dropouts/frame and can result in serious personal injury or death.

Free Manuals Download Website

<http://myh66.com>

<http://usermanuals.us>

<http://www.somanuals.com>

<http://www.4manuals.cc>

<http://www.manual-lib.com>

<http://www.404manual.com>

<http://www.luxmanual.com>

<http://aubethermostatmanual.com>

Golf course search by state

<http://golfingnear.com>

Email search by domain

<http://emailbydomain.com>

Auto manuals search

<http://auto.somanuals.com>

TV manuals search

<http://tv.somanuals.com>