



NetLink Components

NetLink Telephony Gateway

NetLink SVP Server

NetLink Wireless Telephones

Quick Start Guide

NetLink Telephony Gateway environments

Vendor IP environments

72-1065-01
Issue B

Trademark Information

Polycom® and the logo designs
SpectraLink®
LinkPlus
Link
NetLink
SVP

Are trademarks and registered trademarks of Polycom, Inc. in the United States of America and various countries. All other trademarks used herein are the property of their respective owners.

Patent Information

The accompanying product is protected by one or more US and foreign patents and/or pending patent applications held by Polycom, Inc.

Copyright Notice

Copyright © 2005 to 2008 Polycom, Inc.

All rights reserved under the International and pan-American copyright Conventions.

No part of this manual, or the software described herein, may be reproduced or transmitted in any form or by any means, or translated into another language or format, in whole or in part, without the express written permission of Polycom, Inc.

Do not remove (or allow any third party to remove) any product identification, copyright or other notices.

Every effort has been made to ensure that the information in this document is accurate. Polycom, Inc. is not responsible for printing or clerical errors. Information in this document is subject to change without notice and does not represent a commitment on the part of Polycom, Inc.

Notice

Polycom, Inc. has prepared this document for use by Polycom personnel and customers. The drawings and specifications contained herein are the property of Polycom and shall be neither reproduced in whole or in part without the prior written approval of Polycom, nor be implied to grant any license to make, use, or sell equipment manufactured in accordance herewith.

Polycom reserves the right to make changes in specifications and other information contained in this document without prior notice, and the reader should in all cases consult Polycom to determine whether any such changes have been made.

No representation or other affirmation of fact contained in this document including but not limited to statements regarding capacity, response-time performance, suitability for use, or performance of products described herein shall be deemed to be a warranty by Polycom for any purpose, or give rise to any liability of Polycom whatsoever.

Contact Information

Please contact your Polycom Authorized Reseller for assistance.

Polycom, Inc.
4750 Willow Road,
Pleasanton, CA 94588
<http://www.polycom.com>

Note concerning the NetLink Telephony Gateway and the NetLink SVP Server:

This equipment has been tested and found to comply with the limits for a Class A digital device, pursuant to Part 15 of the FCC Rules. These limits are designed to provide reasonable protection against harmful interference when the equipment is operated in a commercial environment. This equipment generates, uses, and can radiate radio frequency energy and, if not installed and used in accordance with the instruction manual, may cause harmful interference to radio communications. Operation of this equipment in a residential area is likely to cause harmful interference in which case the user will be required to correct the interference at his own expense.

Note concerning shielded cable:

SpectraLink recommends the use of shielded cable for all external signal connections in order to maintain FCC Part 15 emissions requirements.

Note concerning the NetLink Wireless Telephones:

This device complies with Part 15 of the FCC Rules. Operation is subject to the following two conditions: (1) This device may not cause harmful interference, and (2) this device must accept any interference received, including interference that may cause undesired operation.



TUV Rheinland of North America is a Nationally Recognized Testing Laboratory (NRTL) in the United States and is accredited by the Standards Council of Canada to test and certify products to Canadian National Standards. Clients can demonstrate compliance for both U.S. and Canadian markets through a single mark (cTUVus) on their product(s) which denotes compliance to U.S. and Canadian National Standards.



WARNING: Changes or modifications to this equipment not approved by SpectraLink Corporation may cause this equipment to not comply with part 15 of the FCC rules and void the user's authority to operate this equipment.



WARNING: SpectraLink products contain no user-serviceable parts inside. Refer servicing to qualified service personnel.

**IMPORTANT SAFETY INFORMATION**

Follow these general precautions while installing telephone equipment:

- Never install telephone wiring during a lightning storm.
- Never install telephone jacks in wet locations unless the jack is specifically designed for wet locations.
- Never touch uninsulated telephone wires or terminals unless the telephone line has been disconnected at the network interface.
- Use caution when installing or modifying telephone lines

Table of Contents

1. About This Document	5
1.1 SpectraLink Corporation Model Numbers	5
1.2 Referenced Documents	5
1.3 Customer Support Hotline	6
2. NetLink Overview	7
2.1 NetLink Telephony Gateway (SRP) environments	7
2.2 Other IP Protocol environments	7
3. NetLink Component Setup Sequence	8
4. System Diagrams	9
4.1 System Diagram for other IP Protocol environment	9
4.2 System Diagram for NetLink Telephony Gateway environments	10

1. About This Document

This document is a short guide to the installation, setup, and maintenance of the SpectraLink NetLink Wireless Telephone System when utilized with a traditional PBX or IP Telephony Server. It outlines the steps to install and configure the NetLink Telephony Gateway, the NetLink SVP Server, and the NetLink Wireless Telephones.

1.1 SpectraLink Corporation Model Numbers

This document covers the following registered model numbers:

TGA116, SVP100, SNP2400, RNP2400

1.2 Referenced Documents

SpectraLink 8000 Telephony Gateway: Administration Guide for SRP (1725-36028-001)

SpectraLink 8000 SVP Server: Administration Guide for SRP (1725-36032-001)

SpectraLink e340/h340/i640 Wireless Telephone Configuration and Administration Guide (SRP) (72-1065-09)

SpectraLink SVP Server: Administration Guide for Mitel and Cisco (1725-36031-001)

SpectraLink Wireless Telephone: Configuration and Administration for Cisco CallManager/CallManagerExpress (72-1082-02)
for Mitel Networks 3300 and SX-200 ICP (72-1084-02)

SpectraLink 8002, e340/h340/i640 Wireless Telephone Configuration Cradle Administration Guide (1725-36036-001)

Above documents are available at

<http://www.polycom.com/usa/en/support/voice/wi-fi/wi-fi.html>

Polycom WLAN Compatibility Table (1725-36040-001)

Access Point Configuration Guide (1725-36xxx-001 where xxx indicates a number corresponding to the type of access point.)

Above documents are available at

http://www.polycom.com/usa/en/support/voice/wi-fi/wi-fi_interoperability.html

LinkPlus Interface Guide (1725-361xx-001 where xx indicates a number corresponding to the type of PBX), available at

http://www.polycom.com/usa/en/support/voice/wi-fi/pbx_integration.html

Deploying Enterprise-Grade Wi-Fi Telephony white paper, available at

http://www.polycom.com/common/documents/products/voice/mobile/bestpractices_SLNK_032708.pdf

1.3 Customer Support Hotline

SpectraLink wants you to have a successful installation. If you have questions please contact our Customer Support Hotline at (800) 775-5330. The hotline is open Monday through Friday, 6 a.m. to 6 p.m. Mountain time.

For Technical Support: technicalsupport@polycom.com

For Knowledge Base: <http://www.polycom.com/usa/en/support/voice/voice.html>

For Return Material Authorization: rmaordinator@polycom.com

2. NetLink Overview

There are two basic types of NetLink environments – those that utilize SpectraLink Radio Protocol (SRP) with the NetLink Telephony Gateway and those that use IP protocols from third-party vendors. This document will outline the setup of both types of systems.

2.1 NetLink Telephony Gateway (SRP) environments

The components that must be installed and configured in a SRP system are the NetLink Telephony Gateway and NetLink Wireless Telephones. The NetLink SVP Server is required for systems that use five or more NetLink Telephony Gateways.

Software for the NetLink Wireless Telephones resides on the NetLink Telephony Gateway, which functions as a TFTP server for over-the-air downloading by the NetLink Wireless Telephones.

Configuration is done through system menus for the NetLink Telephony Gateway and NetLink SVP Server. These are usually viewed via a computer that is connected to the device through a serial port (null-modem cable) or through a Telnet session on the LAN. The series of screens containing menus and options for configuring and maintaining the NetLink components is called the Administration Console. Full information is available in *SpectraLink 8000 Telephony Gateway: Administration Guide for SRP*.

A NetLink SVP Server is required if a NetLink system has five or more NetLink Telephony Gateways. In even larger systems, additional NetLink SVP Servers are required. NetLink SVP Server menus and options are fully described in *SpectraLink 8000 SVP Server: Administration Guide for SRP*.

NetLink Wireless Telephones are configured after the NetLink Telephony Gateway and NetLink SVP Server are installed and configured. The complete NetLink Wireless Telephone configuration instructions are in *SpectraLink e340/h340/i640 Wireless Telephone Configuration and Administration Guide (SRP)*.

2.2 Other IP Protocol environments

The NetLink components that must be installed and configured in other IP protocol environments are the NetLink SVP Server and NetLink Wireless Telephones. NetLink SVP Server menus and options are fully described in *SpectraLink SVP Server: Administration Guide for Mitel and Cisco*.

Each type of IP protocol requires a different configuration for the NetLink Wireless Telephones. IP protocols that are available are listed in the *Referenced Documents* in section 1.3. The complete NetLink Wireless Telephone configuration instructions for the available IP protocols are in *SpectraLink Wireless Telephone: Configuration and Administration for [IP Protocol]*. Additional protocols may be available. Contact SpectraLink Customer Service for assistance.

A TFTP server must be designated on the WLAN for updating the NetLink SVP Server and the NetLink Wireless Telephones.

3. NetLink Component Setup Sequence

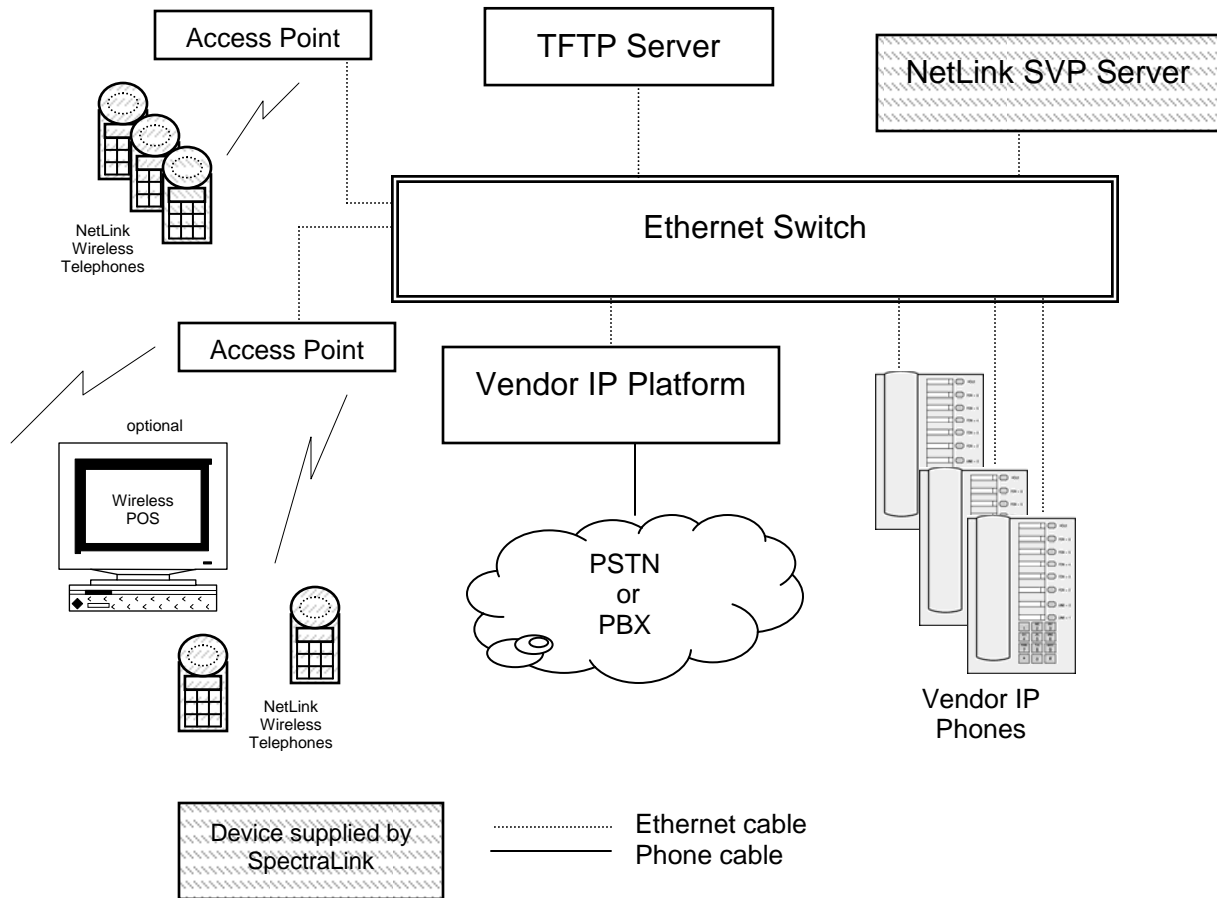
Generally, the installation and configuration process follows these steps.

1. **WLAN** Set up the LAN: A wireless LAN must be properly configured and operational through the use of 802.11b wireless access points (APs). All NetLink components must be on the same subnet. See the *Polycom WLAN Compatibility Table* for APs that have been tested with NetLink Wireless Telephones. A TFTP server must be present in a system that does not use SRP. The NetLink Telephony Gateways functions as a TFTP server in SRP environments.
2. **Access Point Configuration** Access points (APs) are NOT configured from the Administration Console. They are administered independently as covered in the *Access Point Configuration Guide* for the specific type of access point in use.
3. **Install NetLink Telephony Gateway** Install the NetLink Telephony Gateway(s) and the NetLink SVP Server(s), if required per document instructions. This entails the physical placement of the devices and their related equipment.
Install NetLink SVP Server Required for other IP protocols, required if five or more NetLink Telephony Gateways are installed, optional if fewer than five NetLink Telephony Gateways are installed.
4. **Software Update:** Ensure the most recent software is installed on the NetLink Telephony Gateway and/or NetLink SVP Server. Download and install more recent versions, if necessary. Downloads for NetLink components are available from <http://www.polycom.com/usa/en/support/voice/wi-fi/wi-fi.html>. Install per document instructions for each component.
5. **Software Update** Download and install software for the NetLink Wireless Telephones per document instructions. When each the handset is powered up for the first time, it will automatically download this software over the air.
6. **NetLink Telephony Gateway Configuration** Configure the NetLink Telephony Gateway(s) network parameters and the interface to the host telephone system. Configure the ports for each of the 16 possible NetLink Wireless Telephones associated with each NetLink Telephony Gateway.
NetLink SVP Server Configuration Configure the NetLink SVP Server(s) network parameters per document instructions.
7. **NetLink Wireless Telephone Configuration** Program the Admin menu in each NetLink Wireless Telephone and set end user preferences in the Standby menu per document instructions. The NetLink Configuration Cradle may be used for this process. See *SpectraLink 8002, e340/h340/i640 Wireless Telephone Configuration Cradle Administration Guide* for complete instructions.
8. **Site Certification** Test and certify the site per document instructions located in the *SpectraLink Wireless Telephone Configuration and Administration* document for your system.

4. System Diagrams

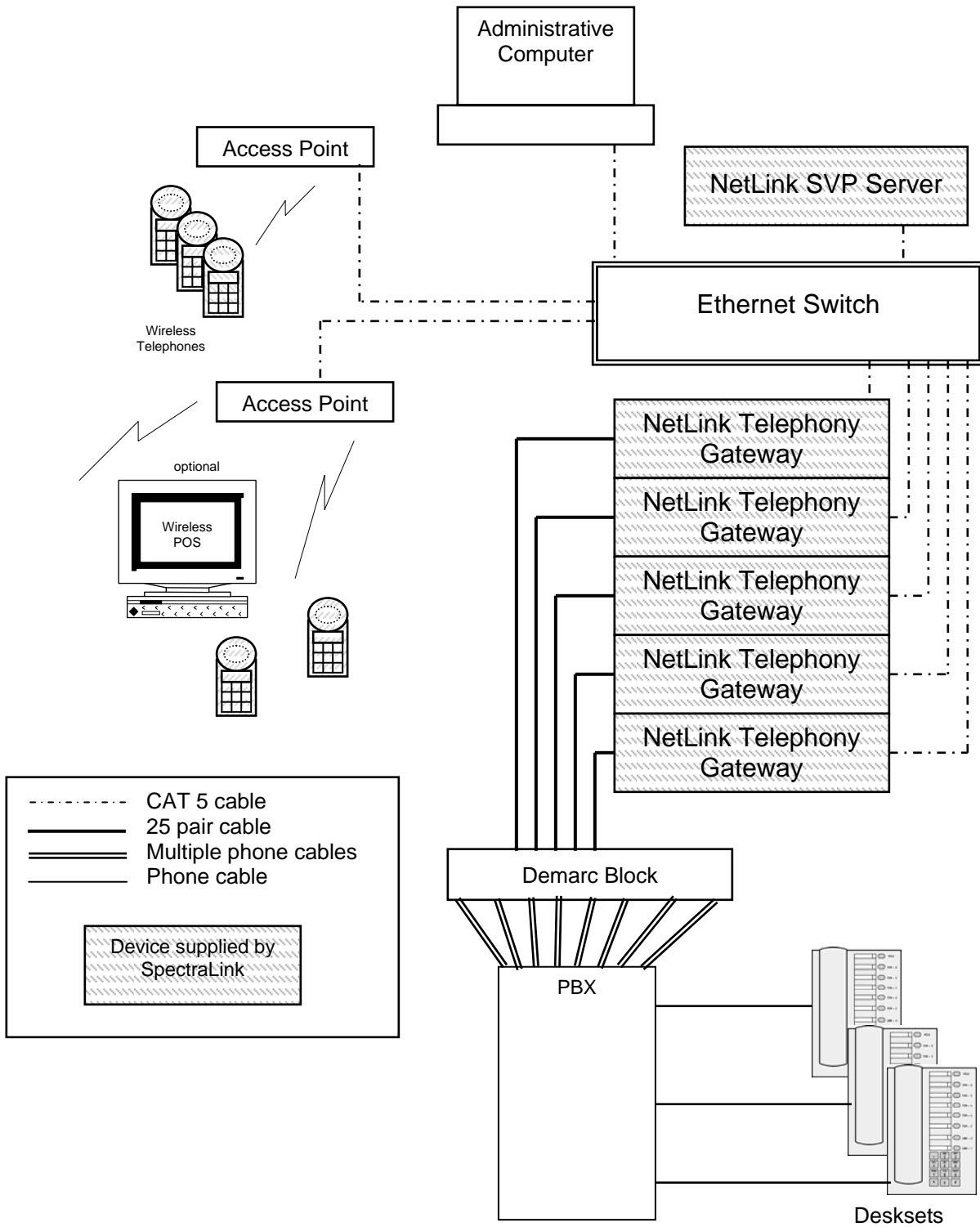
The following diagrams show two examples of WLAN systems that utilize NetLink components. The first diagram shows a system that utilizes a third-party IP protocol with NetLink components. The second diagram shows an example of a larger NetLink Telephony Gateway environment utilizing five NetLink Telephony Gateways and an SVP Server.

4.1 System Diagram for other IP Protocol environment



Vendor IP telephony server architecture example

4.2 System Diagram for NetLink Telephony Gateway environments



(Five NetLink Telephony Gateways with NetLink SVP Server example)

Free Manuals Download Website

<http://myh66.com>

<http://usermanuals.us>

<http://www.somanuals.com>

<http://www.4manuals.cc>

<http://www.manual-lib.com>

<http://www.404manual.com>

<http://www.luxmanual.com>

<http://aubethermostatmanual.com>

Golf course search by state

<http://golfingnear.com>

Email search by domain

<http://emailbydomain.com>

Auto manuals search

<http://auto.somanuals.com>

TV manuals search

<http://tv.somanuals.com>