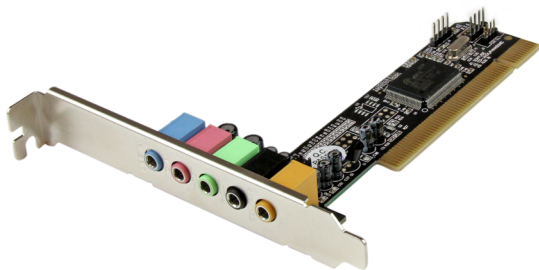


5.1 Channel PCI Surround Sound Card - 16 bit

PCISOUND5CH2



*actual product may vary from photos

DE: Bedienungsanleitung - de.startech.com

FR: Guide de l'utilisateur - fr.startech.com

ES: Guía del usuario - es.startech.com

IT: Guida per l'uso - it.startech.com

NL: Gebruiksaanwijzing - nl.startech.com

PT: Guia do usuário - pt.startech.com

For the most up-to-date information, please visit: www.startech.com

Manual Revision: 03/13/2014

Download from Www.Somanuals.com. All Manuals Search And Download.

FCC Compliance Statement

This equipment has been tested and found to comply with the limits for a Class B digital device, pursuant to part 15 of the FCC Rules. These limits are designed to provide reasonable protection against harmful interference in a residential installation. This equipment generates, uses and can radiate radio frequency energy and, if not installed and used in accordance with the instructions, may cause harmful interference to radio communications. However, there is no guarantee that interference will not occur in a particular installation. If this equipment does cause harmful interference to radio or television reception, which can be determined by turning the equipment off and on, the user is encouraged to try to correct the interference by one or more of the following measures:

- Reorient or relocate the receiving antenna.
- Increase the separation between the equipment and receiver.
- Connect the equipment into an outlet on a circuit different from that to which the receiver is connected.
- Consult the dealer or an experienced radio/TV technician for help.

Use of Trademarks, Registered Trademarks, and other Protected Names and Symbols

This manual may make reference to trademarks, registered trademarks, and other protected names and/or symbols of third-party companies not related in any way to StarTech.com. Where they occur these references are for illustrative purposes only and do not represent an endorsement of a product or service by StarTech.com, or an endorsement of the product(s) to which this manual applies by the third-party company in question. Regardless of any direct acknowledgement elsewhere in the body of this document, StarTech.com hereby acknowledges that all trademarks, registered trademarks, service marks, and other protected names and/or symbols contained in this manual and related documents are the property of their respective holders.

Table of Contents

Introduction	1
Packaging Contents	1
System Requirements.....	1
Product Overview	2
Internal Headers	3
Internal Jumpers.....	3
Installation	3
Hardware Installation	4
Driver and Software Installation	5
Verifying Installation.....	6
Specifications	7
Technical Support	8
Warranty Information	8

Introduction

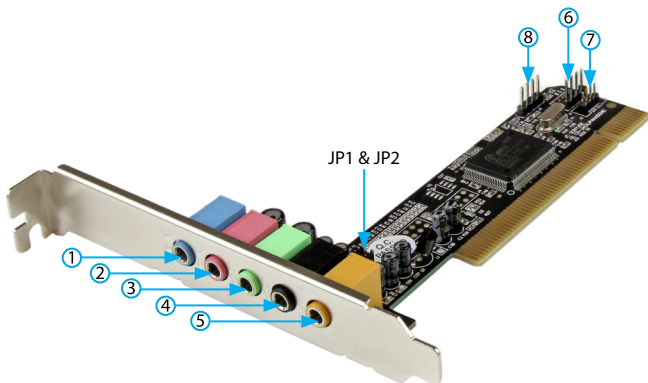
Packaging Contents

- 1x PCI 5.1 Surround Sound Card
- 1x Low Profile Bracket
- 1x Driver CD
- 1x Instruction Manual

System Requirements

- Available 5V PCI Slot
- Microsoft DirectX® 8.1 or later
- Windows® 8 / 8.1 (32/64bit), 7 (32/64), Vista (32/64), XP (32/64), Windows Server® 2012, 2008 R2, 2003 (32/64), Linux 2.6.x and up (Tested up to 3.5)

Product Overview



1. **Line In:** Connect to Tape/CD/DVD player, or other audio sources for output mixing and/or recording
2. **Mic In:** Connect to microphone
3. **Front-Speaker:** Output to speakers with amplifier or earphones or audio-in of home stereo
4. **Rear-Speaker:** Connect to the rear speakers while four/six channel speaker mode is enabled
5. **Center/Sub-Woofers:** Connect to the center speaker and sub-woofer while six channel speaker mode is enabled

Internal Headers

Note: The header pinout is Pin 1 to Pin 4 from left to right for all headers (6, 7, 8).

6. **J1 - Analog CD/IN:** Signals: L-G-G-R

Pin #	Description
1	Left channel signal
2	Left channel ground
3	Right channel ground
4	Right channel signal

7. **J2 - Analog CD/IN:** Signals: G-R-G-L

Pin #	Description
1	Right channel ground
2	Right channel signal
3	Left channel ground
4	Left channel signal

8. **J3 - Auxiliary Input:** Signals: L-G-G-R.

Pin #	Description
1	Left channel signal
2	Left channel ground
3	Right channel ground
4	Right channel signal

Internal Jumpers

JP1 & JP2

1-2 close - Center/Bass channel in normal mode

2-3 close - Center/Bass channel in inverse mode

Installation

Note: It is recommended that you remove any previously installed sound cards and drivers prior to installing this card to avoid any conflicts. If previously installed drivers are not removed, this sound card may not function properly.

If your computer has on-board sound you will need to disable it on the motherboard. For more information please see your computer's documentation or contact your computer's manufacturer.

Hardware Installation

WARNING! PCI cards, like all computer equipment, can be severely damaged by static electricity. Be sure that you are properly grounded before opening your computer case or touching your PCI card. StarTech.com recommends that you wear an anti-static strap when installing any computer component. If an anti-static strap is unavailable, discharge yourself of any static electricity build-up by touching a large grounded metal surface (such as the computer case) for several seconds. Also be careful to handle the card by its edges and not the gold connectors.

1. Turn your computer off and any peripherals connected to the computer (i.e. Printers, external hard drives, etc.). Unplug the power cable from the rear of the power supply on the back of the computer and disconnect all peripheral devices.
2. Remove the cover from the computer case. See documentation for your computer system for details.
3. Locate an open PCI slot and remove the metal cover plate on the rear of the computer case (Refer to documentation for your computer system for details.)
4. Insert the card into the open PCI slot and fasten the bracket to the rear of the case.

NOTE: If installing the card into a low profile desktop system, replacing the preinstalled standard profile bracket with the included low profile (half height) installation bracket may be necessary.

5. **OPTIONAL** To connect an existing CD/DVD drive's analog audio signal to the sound card, use an appropriate audio cable (supplied with CD/DVD drive) from the audio output on the CD/DVD drive to one of the input headers on the card. Connect to the appropriate header depending on the make of CD/DVD drive.

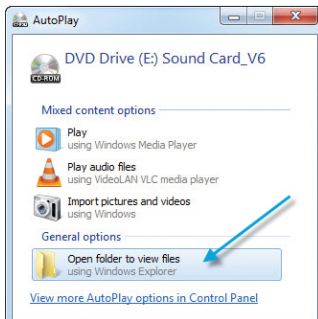
Header	CD/DVD Drive Brand
J1	Sony
J2	Panasonic
J3	Other brands

6. Place the cover back onto the computer case.
7. Insert the power cable into the socket on the power supply and reconnect all other connectors removed in Step 1.

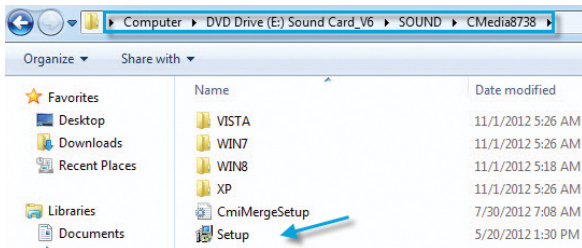
Driver and Software Installation

Windows

1. Upon starting Windows, if the Found New Hardware wizard appears on the screen, cancel/close the window and insert the included Driver CD into your CD/DVD drive.
2. If Autoplay is enabled, select the "Open folder to view files" option when the dialog appears.



3. Otherwise, browse to your CD/DVD drive and open the Setup.exe application located in the SOUND\CMedia8738 folder to start the installation process.



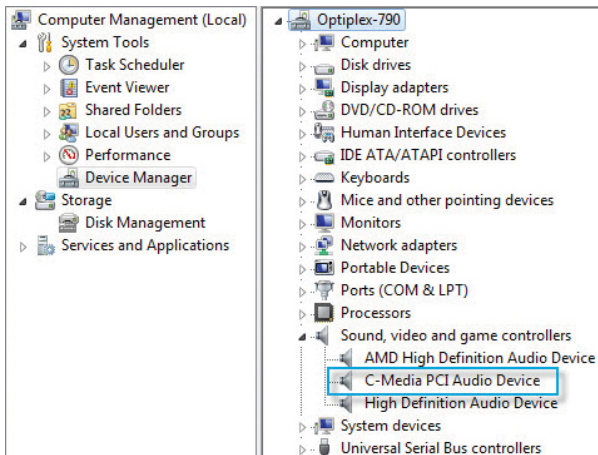
4. Follow any on-screen instructions to complete the software installation.

NOTE: You may be prompted to restart your system. Once you have restarted, the sound card will be ready to use.

Verifying Installation

Windows

1. Open the Device Manager by right-clicking on Computer, and then select Manage. In the new Computer Management window, select Device Manager from the left window panel (For Windows 8, open the Control Panel and select Device Manager).
2. Expand the "Sound, video and game controllers" section. On a successful install, you should see the following device in the list with no exclamation points or question marks.



Specifications

Warranty	2 Years
Bus Type	PCI v2.2 (5V)
Card Type	Standard profile installed, low-profile included
Chipset ID	C-Media 8738LX
Internal Ports	3 x MPC2 (4 pin; Audio) Male
External Ports	5 x 3.5 mm Mini-Jack (3 Position) Female
Audio Specifications	Supports 5.1 Channel 16 bit stereo audio
Full Duplex Support	Yes
Dimensions	121mm x 19mm x 122mm
Weight	90 g
Compatible Operating Systems	Windows® 8 / 8.1 (32/64bit), 7 (32/64), Vista (32/64), XP (32/64), Windows Server® 2012, 2008 R2, 2003 (32/64), Linux 2.6.x and up (Tested up to 3.5)
Operating Temperature	0°C to 50°C (32°F to 122°F)
Storage Temperature	-20°C to 60°C (-4°F to 140°F)
Humidity	5~85% RH

Technical Support

StarTech.com's lifetime technical support is an integral part of our commitment to provide industry-leading solutions. If you ever need help with your product, visit www.startech.com/support and access our comprehensive selection of online tools, documentation, and downloads.

For the latest drivers/software, please visit www.startech.com/downloads

Warranty Information

This product is backed by a two year warranty.

In addition, StarTech.com warrants its products against defects in materials and workmanship for the periods noted, following the initial date of purchase. During this period, the products may be returned for repair, or replacement with equivalent products at our discretion. The warranty covers parts and labor costs only. StarTech.com does not warrant its products from defects or damages arising from misuse, abuse, alteration, or normal wear and tear.

Limitation of Liability

In no event shall the liability of StarTech.com Ltd. and StarTech.com USA LLP (or their officers, directors, employees or agents) for any damages (whether direct or indirect, special, punitive, incidental, consequential, or otherwise), loss of profits, loss of business, or any pecuniary loss, arising out of or related to the use of the product exceed the actual price paid for the product. Some states do not allow the exclusion or limitation of incidental or consequential damages. If such laws apply, the limitations or exclusions contained in this statement may not apply to you.

Hard-to-find made easy. At StarTech.com, that isn't a slogan. It's a promise.

StarTech.com is your one-stop source for every connectivity part you need. From the latest technology to legacy products — and all the parts that bridge the old and new — we can help you find the parts that connect your solutions.

We make it easy to locate the parts, and we quickly deliver them wherever they need to go. Just talk to one of our tech advisors or visit our website. You'll be connected to the products you need in no time.

Visit www.startech.com for complete information on all StarTech.com products and to access exclusive resources and time-saving tools.

StarTech.com is an ISO 9001 Registered manufacturer of connectivity and technology parts. StarTech.com was founded in 1985 and has operations in the United States, Canada, the United Kingdom and Taiwan servicing a worldwide market.

Free Manuals Download Website

<http://myh66.com>

<http://usermanuals.us>

<http://www.somanuals.com>

<http://www.4manuals.cc>

<http://www.manual-lib.com>

<http://www.404manual.com>

<http://www.luxmanual.com>

<http://aubethermostatmanual.com>

Golf course search by state

<http://golfingnear.com>

Email search by domain

<http://emailbydomain.com>

Auto manuals search

<http://auto.somanuals.com>

TV manuals search

<http://tv.somanuals.com>