

XGI Volari Z7 16 MB PCI VGA Video Adapter Card

PCIVGA7

DE: Bedienungsanleitung - de.startech.com
 FR: Guide de l'utilisateur - fr.startech.com
 ES: Guía del usuario - es.startech.com
 IT: Guida per l'uso - it.startech.com
 NL: Gebruiksaanwijzing - nl.startech.com
 PT: Guia do usuário - pt.startech.com

Introduction

Thank you for purchasing a StarTech.com PCIVGA7 PCI VGA Video Card. This convenient video card is fully compliant with PCI 2.2 and provides high quality 2D display at resolutions of up to 1600 x 1200 pixels.

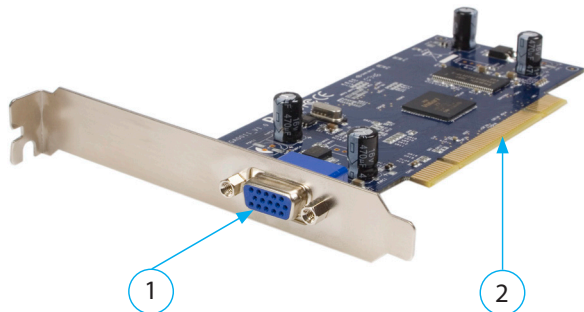
Features

- Compliant with PCI 2.2 (33/66 MHz)
- Maximum 2D Resolution for 32-bit (1280x1024 @60Hz) and 16-bit (1600x1200 @ 75Hz)
- Maximum color depth up to 16.7M colors output

Package Contents

- 1 x PCI Video Card
- 1 x Driver CD
- 1 x Instruction Manual

Hardware Guide



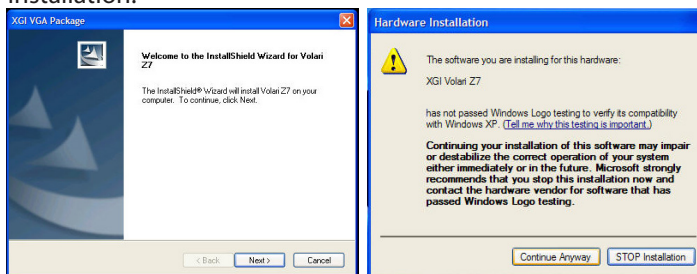
1. D-Sub RGB (VGA) Connector
2. PCI Interface

Hardware Installation

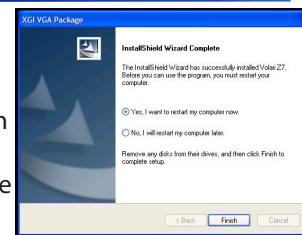
1. Make sure that your system is unplugged and you are grounded.
2. Remove the cover of your system (see your computer's user manual for details, if necessary) and gently turn your computer onto its side, so that the PCI expansion slot openings on the motherboard are facing upwards.
3. Locate an empty PCI slot (usually white in color) and remove the metal plate that covers the corresponding rear bracket. You may need a Phillips screwdriver to perform this step. Retain the screw! You will need it to secure the card later.
4. Gently insert the card into the empty slot, making sure it is firmly seated.
5. Secure the card in place using the screw you removed in Step 3, as applicable.
6. Replace and secure the computer cover.

Driver Installation

1. Open the **Setup.exe** file located in the following path: X:\Windows 2000_XP\setup.exe, where X: designates the CD/DVD-ROM drive.
2. When the InstallShield welcome screen appears, click **Next**. If you receive a notification that the software has not passed Windows Logo testing, click **Continue Anyway** to proceed with the installation.



3. Once all files have been installed, select **Yes, I want to restart my computer now**, and click **Finish** to restart your computer and complete the installation process. If you wish to verify the installation, open the Device Manager and check that the drivers have been recognized.
4. Once the computer has successfully rebooted, your new VGA port is ready for use.



Specifications

Specification	PCIVGAV7
Interface	32-bit PCI v2.2 (3.3V/ 5V) 33MHz/ 66MHz
Chipset	XGI Volari™Z7
Memory	16MB DDR RAM
Port Type	D-Sub RGB (VGA) Connector
Power Consumption	1.4W
OS Support	Windows XP/200/Vista™; Linux
Environment	Operating Temperature : -10°C ~ 85°C Store Temperature: -20°C ~ 90°C Operating Humidity: 5% ~ 95% RH

FCC Compliance Statement

This equipment has been tested and found to comply with the limits for a Class B digital device, pursuant to part 15 of the FCC Rules. These limits are designed to provide reasonable protection against harmful interference in a residential installation. This equipment generates, uses and can radiate radio frequency energy and, if not installed and used in accordance with the instructions, may cause harmful interference to radio communications. However, there is no guarantee that interference will not occur in a particular installation. If this equipment does cause harmful interference to radio or television reception, which can be determined by turning the equipment off and on, the user is encouraged to try to correct the interference by one or more of the following measures:

- Reorient or relocate the receiving antenna.
- Increase the separation between the equipment and receiver.
- Connect the equipment into an outlet on a circuit different from that to which the receiver is connected.
- Consult the dealer or an experienced radio/TV technician for help.

Use of Trademarks, Registered Trademarks, and other Protected Names and Symbols

This manual may make reference to trademarks, registered trademarks, and other protected names and/or symbols of third-party companies not related in any way to StarTech.com. Where they occur these references are for illustrative purposes only and do not represent an endorsement of a product or service by StarTech.com, or an endorsement of the product(s) to which this manual applies by the third-party company in question. Regardless of any direct acknowledgement elsewhere in the body of this document, StarTech.com hereby acknowledges that all trademarks, registered trademarks, service marks, and other protected names and/or symbols contained in this manual and related documents are the property of their respective holders.

Technical Support

StarTech.com's lifetime technical support is an integral part of our commitment to provide industry-leading solutions. If you ever need help with your product, visit www.startech.com/support and access our comprehensive selection of online tools, documentation, and downloads.

For the latest drivers/software, please visit www.startech.com/downloads

Warranty Information

This product is backed by a two year warranty.

In addition, StarTech.com warrants its products against defects in materials and workmanship for the periods noted, following the initial date of purchase. During this period, the products may be returned for repair, or replacement with equivalent products at our discretion. The warranty covers parts and labor costs only. StarTech.com does not warrant its products from defects or damages arising from misuse, abuse, alteration, or normal wear and tear.

Limitation of Liability

In no event shall the liability of StarTech.com Ltd. and StarTech.com USA LLP (or their officers, directors, employees or agents) for any damages (whether direct or indirect, special, punitive, incidental, consequential, or otherwise), loss of profits, loss of business, or any pecuniary loss, arising out of or related to the use of the product exceed the actual price paid for the product. Some states do not allow the exclusion or limitation of incidental or consequential damages, so the above limitation may not apply to you.

Free Manuals Download Website

<http://myh66.com>

<http://usermanuals.us>

<http://www.somanuals.com>

<http://www.4manuals.cc>

<http://www.manual-lib.com>

<http://www.404manual.com>

<http://www.luxmanual.com>

<http://aubethermostatmanual.com>

Golf course search by state

<http://golfingnear.com>

Email search by domain

<http://emailbydomain.com>

Auto manuals search

<http://auto.somanuals.com>

TV manuals search

<http://tv.somanuals.com>