

# UNIDOCK2U

## Instruction Manual

# Serial ATA Hard Drive Docking Station

**USB to SATA, IDE External Hard  
Drive Docking Station  
for 2.5" or 3.5" Hard Drives**

**StarTech.com**   
*Making hard-to-find easy!*<sup>®</sup>

## **FCC Compliance Statement**

This equipment has been tested and found to comply with the limits for a Class B digital device, pursuant to part 15 of the FCC Rules. These limits are designed to provide reasonable protection against harmful interference in a residential installation. This equipment generates, uses and can radiate radio frequency energy and, if not installed and used in accordance with the instructions, may cause harmful interference to radio communications. However, there is no guarantee that interference will not occur in a particular installation. If this equipment does cause harmful interference to radio or television reception, which can be determined by turning the equipment off and on, the user is encouraged to try to correct the interference by one or more of the following measures:

- Reorient or relocate the receiving antenna.
- Increase the separation between the equipment and receiver.
- Connect the equipment into an outlet on a circuit different from that to which the receiver is connected.
- Consult the dealer or an experienced radio/TV technician for help.

## **Use of Trademarks, Registered Trademarks, and other Protected Names and Symbols**

This manual may make reference to trademarks, registered trademarks, and other protected names and/or symbols of third-party companies not related in any way to StarTech.com. Where they occur these references are for illustrative purposes only and do not represent an endorsement of a product or service by StarTech.com, or an endorsement of the product(s) to which this manual applies by the third-party company in question. Regardless of any direct acknowledgement elsewhere in the body of this document, StarTech.com hereby acknowledges that all trademarks, registered trademarks, service marks, and other protected names and/or symbols contained in this manual and related documents are the property of their respective holders.

# Table of Contents

<b>Introduction</b> .....	<b>1</b>
Packaging Contents.....	1
System Requirements .....	1
<b>Installation</b> .....	<b>1</b>
Front View.....	2
Rear View .....	2
Hardware Installation.....	3
Driver Installation.....	3
Using the Hard Drive Dock .....	4
<b>Specifications</b> .....	<b>6</b>
<b>Technical Support</b> .....	<b>7</b>
<b>Warranty Information</b> .....	<b>7</b>

## Introduction

This external SATA and IDE hard drive docking station provides full and instant access to any 2.5in or 3.5in IDE and SATA (SATA 1.5Gb/s or 3.0Gb/s) hard drive up to 2 TB without having to mount the hard drive inside a computer or enclosure.

## Packaging Contents

- 1 x UNIDOCK2U hard drive dock
- 1 x IDE cable
- 1 x 40-pin to 44-pin IDE adapter cable
- 1 x LP4 power cable
- 1 x USB A to B cable
- 1 x Universal Power Adapter
- 3 x Power Cords (NA/UK/EU)
- 1 x Installation Guide

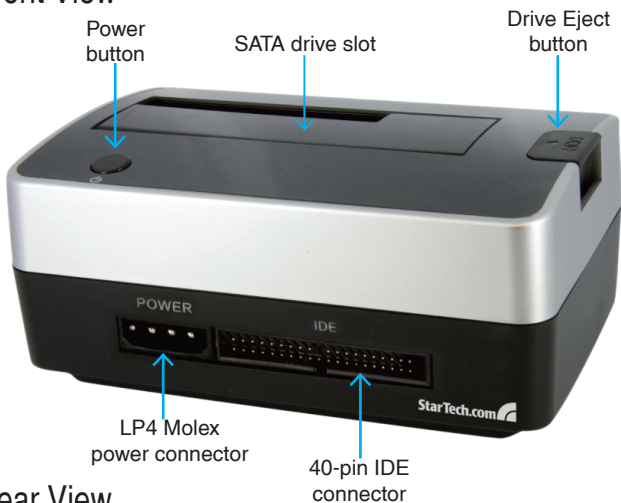
## System Requirements

- USB enabled computer system
- Microsoft Windows® 2000/XP/Vista/7, Mac OS® 9.2 or later or Linux®

## Installation

**WARNING:** Hard drives require careful handling, especially when being transported. If you are not careful with your hard disk, lost data may result. Always handle your hard drive and storage device with caution.

## Front View



## Rear View



## Hardware Installation

1. Plug the power and USB cable from the rear side of the hard drive dock to a power outlet and the USB port on the computer respectively.
2. If connecting a SATA hard drive, simply insert the drive, into the top loading slot on the hard drive dock. Make sure the connectors on the hard drive face the same corner as the cut-out in the drive slot door.
3. If connecting a 3.5" IDE hard drive, attach the short IDE ribbon cable and the separate LP4 molex power connector to the front side of the hard drive dock. Then attach the 3.5" hard drive to the IDE cable and LP4 connector.

If using a 2.5" IDE hard drive with 44-pin connector, attach the included 40-pin to 44-pin ribbon cable with integrated LP4 connector to the front of the hard drive dock. Then attach the 2.5" hard drive to the ribbon cable.

4. Once the hard drive(s) are connected, press the power button on the top of the docking station.
5. The hard drive(s) should be automatically detected by the operating system.

## Driver Installation

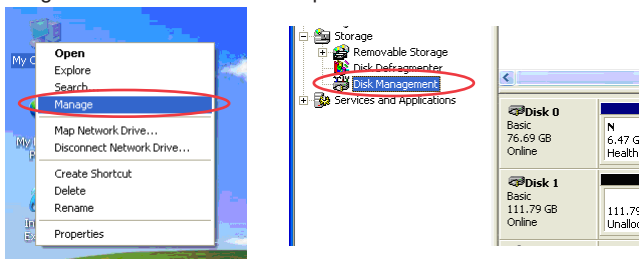
### **Windows 2000/XP/Vista/7, Mac OS 9.2 or later or Linux**

No driver installation is required for these operating systems, as this hard drive dock is natively supported, so the drivers are already installed.

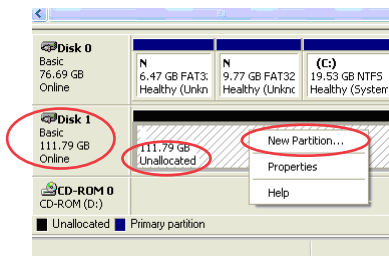
## Using the Hard Drive Dock

### Windows 2000/XP/Vista/7

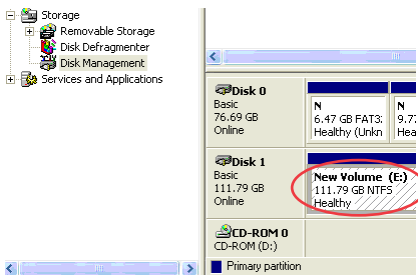
If you are using a brand new hard drive that does not contain any data, then you will first need to prepare the hard drive for use. From the main desktop, right-click on “My Computer” (“Computer” in Vista), then select Manage. In the new Computer Management window, select Disk Management from the left window panel.



Locate the Disk that says it is “Unallocated” (check hard drive capacity to confirm it’s the correct hard drive) and then right-click in the section that says “Unallocated” and select “New Partition”.



The New Partition Wizard will appear. Follow the instructions in the wizard to complete setting up the drive. Once complete, the Disk should show up as “Healthy” with a drive letter assigned (ie. E:). This drive letter should now appear within “My Computer”.



If you are installing a hard drive that already has data on it, then after plugging it in, the drive should automatically show up with a drive letter assigned within "My Computer". You can verify or change the drive letter through Disk Management, as outlined above.



# Specifications

<b>Bus Interface</b>	USB 2.0
<b>Connectors</b>	<b>Front</b> 1 x 40-pin IDE male 1 x 4-pin LP4 molex <b>Top</b> 1 x 7+15 SATA <b>Rear</b> 1 x USB type B 1 x Power Adapter
<b>Chipset</b>	JMicron JM20337
<b>Hard Drive Compatibility</b>	2.5" or 3.5" SATA 1.5 or 3.0 Gb/s with max capacity of 1.5TB 2.5" or 3.5" IDE hard drive
<b>Power Adapter</b>	12VDC, 3A, center positive
<b>Dimensions</b>	145.0mm x 93.0mm x 145.0mm
<b>Weight</b>	413g
<b>Compatible Operating Systems</b>	Windows 2000/XP/Vista/7, Mac OS 9.2 or later, Linux

## Technical Support

StarTech.com's lifetime technical support is an integral part of our commitment to provide industry-leading solutions. If you ever need help with your product, visit [www.startech.com/support](http://www.startech.com/support) and access our comprehensive selection of online tools, documentation, and downloads.

## Warranty Information

This product is backed by a one year warranty.

In addition, StarTech.com warrants its products against defects in materials and workmanship for the periods noted, following the initial date of purchase. During this period, the products may be returned for repair, or replacement with equivalent products at our discretion. The warranty covers parts and labor costs only. StarTech.com does not warrant its products from defects or damages arising from misuse, abuse, alteration, or normal wear and tear.

### Limitation of Liability

In no event shall the liability of StarTech.com Ltd. and StarTech.com USA LLP (or their officers, directors, employees or agents) for any damages (whether direct or indirect, special, punitive, incidental, consequential, or otherwise), loss of profits, loss of business, or any pecuniary loss, arising out of or related to the use of the product exceed the actual price paid for the product. Some states do not allow the exclusion or limitation of incidental or consequential damages. If such laws apply, the limitations or exclusions contained in this statement may not apply to you.



StarTech.com has been making “hard-to-find easy” since 1985, providing high quality solutions to a diverse IT and A/V customer base that spans many channels, including government, education and industrial facilities to name just a few. We offer an unmatched selection of computer parts, cables, A/V products, KVM and Server Management solutions, serving a worldwide market through our locations in the United States, Canada, the United Kingdom and Taiwan.

Visit **[www.startech.com](http://www.startech.com)** today for complete information about all our products and to access exclusive interactive tools such as the Cable Finder, Parts Finder and the KVM Reference Guide.

## Free Manuals Download Website

<http://myh66.com>

<http://usermanuals.us>

<http://www.somanuals.com>

<http://www.4manuals.cc>

<http://www.manual-lib.com>

<http://www.404manual.com>

<http://www.luxmanual.com>

<http://aubethermostatmanual.com>

Golf course search by state

<http://golfingnear.com>

Email search by domain

<http://emailbydomain.com>

Auto manuals search

<http://auto.somanuals.com>

TV manuals search

<http://tv.somanuals.com>