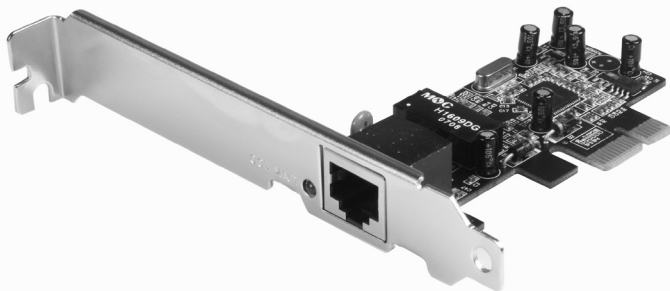


# PCI Express 10/100 Ethernet Card

PEX100S



**StarTech.com** 

Download from [www.Somanuals.com](http://www.Somanuals.com). All Manuals Search and Download Easy!

## **FCC Compliance Statement**

This equipment has been tested and found to comply with the limits for a Class B digital device, pursuant to part 15 of the FCC Rules. These limits are designed to provide reasonable protection against harmful interference in a residential installation. This equipment generates, uses and can radiate radio frequency energy and, if not installed and used in accordance with the instructions, may cause harmful interference to radio communications. However, there is no guarantee that interference will not occur in a particular installation. If this equipment does cause harmful interference to radio or television reception, which can be determined by turning the equipment off and on, the user is encouraged to try to correct the interference by one or more of the following measures:

- Reorient or relocate the receiving antenna.
- Increase the separation between the equipment and receiver.
- Connect the equipment into an outlet on a circuit different from that to which the receiver is connected.
- Consult the dealer or an experienced radio/TV technician for help.

## **Use of Trademarks, Registered Trademarks, and other Protected Names and Symbols**

This manual may make reference to trademarks, registered trademarks, and other protected names and/or symbols of third-party companies not related in any way to StarTech.com. Where they occur these references are for illustrative purposes only and do not represent an endorsement of a product or service by StarTech.com, or an endorsement of the product(s) to which this manual applies by the third-party company in question. Regardless of any direct acknowledgement elsewhere in the body of this document, StarTech.com hereby acknowledges that all trademarks, registered trademarks, service marks, and other protected names and/or symbols contained in this manual and related documents are the property of their respective holders.

# Table of Contents

<b>Introduction .....</b>	<b>1</b>
Features .....	1
Package contents .....	1
System Requirements .....	1
<b>Hardware Guide .....</b>	<b>2</b>
<b>Installation.....</b>	<b>3</b>
Windows® XP, 2000, Server 2003.....	3
Windows Vista® .....	4
Verifying Successful Installation (Optional) .....	5
<b>Specifications .....</b>	<b>6</b>
Technical Support.....	7
Warranty Information .....	7
Limitation of Liability .....	7

# Introduction

Thank you for purchasing a StarTech.com PCI Express 10/100 Ethernet Card. Providing a simple way to add 10/100 Ethernet capability to a PCI Express enabled server or workstation for data throughput speeds of up to 2.5Gbps, PEX100S provides a broad range of features and functions, including support for both Full and Half Duplex operation as well as Wake On LAN (WOL) Power Management. PEX100S also features Auto MDI/MDIX automatic configuration, simplifying installation and configuration.

## Features

- Single-lane (or x1) PCI Express throughput rates of up to 2.5Gbps
- 10/100 IEEE 802.3 specification compliant
- 10/100M data rate auto-negotiation
- LED indicate the status of data transmission
- Supports Wake On Lan (WOL) power management (optional)

## Package contents

This package should contain:

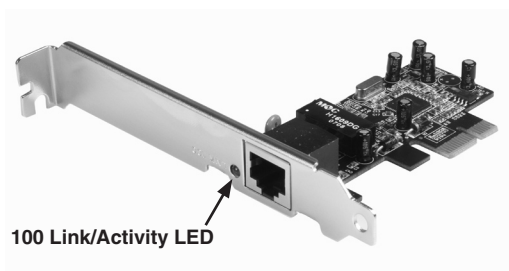
- 1 x Driver CD
- 1 x PCIe 10/100 Mbps Ethernet Card
- 1 x Instruction Manual
- 1 x Low Profile Bracket

## System Requirements

- A host computer with an available PCI Express slot
- A CD/DVD-ROM Drive (Driver installation)

# Hardware Guide

The following table provides descriptions of the 100 Link/Activity LED status:



LED	Color	Status	Description
100/ACT	Green	On	Port is currently connected to a 100Mbps network
		Blink	Sending/receiving packets

# Installation

## Hardware Installation

1. Shut down all power connected to the computer, as well as all devices connected to the computer peripherally (i.e. Printers, Monitors, Scanners etc.). As an added step to ensure safe installation, unplug the power supply from the computer.
2. Remove the computer cover, allowing access to the motherboard and available slots. For more detailed instruction on how to perform this step, please refer to the documentation that was included with your computer at the time of purchase.
3. Locate an empty PCI Express slot, removing the metal bracket covering the accompanying empty port/socket on the rear panel of the computer chassis.
4. Position the card above the open PCI Express slot, ensuring that the card is properly aligned with the slot. Insert the card firmly into the slot, distributing force evenly across the length of the board.

Once inserted, secure the card into the adjoining socket (previously covered by metal bracket, on the rear panel of the computer chassis), using the correct size screw (if necessary, please consult documentation that accompanied purchase of computer).

## Software Installation

### Windows® XP, 2000, Server 2003

The following instructions are based on the installation procedure found in the Windows® XP (Service Pack 2) operating system, but are similar if not identical to Windows® 2000 and Windows Server® 2003:

Once the Windows® (2000, XP, Server 2003) operating system loads following hardware installation, PEX100S will automatically be detected, launching the Found New Hardware Wizard.

1. When the **Found New Hardware Wizard** appears, please click the **Cancel** button to halt driver installation for the device temporarily; the driver for this device will be installed in the next step.
2. Insert the Driver CD that was included with PEX100S.
3. From the Windows desktop, click one the **Start** button, then select **Run**.
4. In the text space provided, type X:\PCIe\LAN\setup.exe (where X denotes the letter assigned to your CD/DVD-ROM drive) and then click **OK**.
5. Follow the on-screen instructions to complete the installation.
6. Restart Windows to complete the installation

### Windows Vista®

Once the Windows Vista® operating system loads following hardware installation, the PEX100S 10/100 Mbps Ethernet PCI Express Card will be detected, launching automatic installation of the Gigabit Ethernet PCI Express Card.

Once this is complete:

Insert the Driver CD driver bound with 10/100 Mbps Ethernet PCI Express Card into your CD-ROM Drive.

1. Insert the Driver CD that was included with PEX100S.
2. From the Windows desktop, click one the **Start** button, then select **Run**.
3. In the text space provided, type X:\PCIe\LAN\Vista\setup.exe (where X denotes the letter assigned to your CD/DVD-ROM drive) and then click **OK**.
4. Follow the on-screen instructions to complete the installation.
5. Restart the computer to complete the installation.

## Verifying Successful Installation (Optional)

Once the computer has been powered on following the driver installation and the connection of the desired drive, you may wish to verify that the necessary files have been installed properly. To do so:

Right-click on **My Computer** and select **Manage**.

In the left pane of the Computer Management window, select **Device Manager**.

In the right pane of the Computer Management window, click on **Network Adapters**; here, you should see an **Realtek RTL8139/810x Family Fast Ethernet NIC** (*Windows® 2000/XP/Server2003*) or **Realtek RTL8101 Family PCI-E Fast Ethernet NIC (NDIS 6.0)** (*Windows® Vista*).





# Specifications

<b>Connectors</b>	1 x RJ45
<b>Maximum Data Transfer Rate</b>	100 Mbps
<b>OS Support</b>	Windows® 2000/ME/XP/Vista™
<b>Regulatory Certifications</b>	FCC/CE/ROHS
<b>Product Weight</b>	45 g (1.59 oz )
<b>Product Dimensions</b>	30 mm (1.18") x 140 mm (5.51") x 165 mm (6.5") (W x H x L)

### **Technical Support**

StarTech.com's lifetime technical support is an integral part of our commitment to provide industry-leading solutions. If you ever need help with your product, visit [www.startech.com/support](http://www.startech.com/support) and access our comprehensive selection of online tools, documentation, and downloads.

### **Warranty Information**

This product is backed by a lifetime warranty. In addition, StarTech.com warrants its products against defects in materials and workmanship for the periods noted, following the initial date of purchase. During this period, the products may be returned for repair, or replacement with equivalent products at our discretion. The warranty covers parts and labor costs only. StarTech.com does not warrant its products from defects or damages arising from misuse, abuse, alteration, or normal wear and tear.

### **Limitation of Liability**

In no event shall the liability of StarTech.com Ltd. and StarTech.com USA LLP (or their officers, directors, employees or agents) for any damages (whether direct or indirect, special, punitive, incidental, consequential, or otherwise), loss of profits, loss of business, or any pecuniary loss, arising out of or related to the use of the product exceed the actual price paid for the product. Some states do not allow the exclusion or limitation of incidental or consequential damages. If such laws apply, the limitations or exclusions contained in this statement may not apply to you.



StarTech.com has been making “hard-to-find easy” since 1985, providing high quality solutions to a diverse IT and A/V customer base that spans many channels, including government, education and industrial facilities to name just a few. We offer an unmatched selection of computer parts, cables, A/V products, KVM and Server Management solutions, serving a worldwide market through our locations in the United States, Canada, the United Kingdom and Taiwan.

Visit **[www.startech.com](http://www.startech.com)** today for complete information about all our products and to access exclusive interactive tools such as the Cable Finder, Parts Finder and the KVM Reference Guide. StarTech.com makes it easy to complete almost any IT or A/V solution. Find out for yourself why our products lead the industry in performance, support, and value.

## Free Manuals Download Website

<http://myh66.com>

<http://usermanuals.us>

<http://www.somanuals.com>

<http://www.4manuals.cc>

<http://www.manual-lib.com>

<http://www.404manual.com>

<http://www.luxmanual.com>

<http://aubethermostatmanual.com>

Golf course search by state

<http://golfingnear.com>

Email search by domain

<http://emailbydomain.com>

Auto manuals search

<http://auto.somanuals.com>

TV manuals search

<http://tv.somanuals.com>