

# Network Adapter

10/100/1000 Mbps PCI Ethernet Card

ST1000BT32

Installation Guide



Actual product may vary from photo

**StarTech.com**

The Professionals' Source for Hard-to-Find Computer Parts

## **FCC Compliance Statement**

This equipment has been tested and found to comply with the limits for a Class B digital device, pursuant to part 15 of the FCC Rules. These limits are designed to provide reasonable protection against harmful interference in a residential installation. This equipment generates, uses and can radiate radio frequency energy and, if not installed and used in accordance with the instructions, may cause harmful interference to radio communications. However, there is no guarantee that interference will not occur in a particular installation. If this equipment does cause harmful interference to radio or television reception, which can be determined by turning the equipment off and on, the user is encouraged to try to correct the interference by one or more of the following measures:

- Reorient or relocate the receiving antenna.
- Increase the separation between the equipment and receiver.
- Connect the equipment into an outlet on a circuit different from that to which the receiver is connected.
- Consult the dealer or an experienced radio/TV technician for help.

## **Use of Trademarks, Registered Trademarks, and other Protected Names and Symbols**

This manual may make reference to trademarks, registered trademarks, and other protected names and/or symbols of third-party companies not related in any way to StarTech.com. Where they occur these references are for illustrative purposes only and do not represent an endorsement of a product or service by StarTech.com, or an endorsement of the product(s) to which this manual applies by the third-party company in question. Regardless of any direct acknowledgement elsewhere in the body of this document, StarTech.com hereby acknowledges that all trademarks, registered trademarks, service marks, and other protected names and/or symbols contained in this manual and related documents are the property of their respective holders.

## Table of Contents

Introduction .....	1
Installation .....	2
Connecting Your Card to a Network .....	2
Installing the Drivers .....	3
Verifying driver installation .....	3
Monitoring Your Card .....	4
Tips for Setting Up Your Network .....	4
Specifications .....	6
Accessory products from StarTech.com .....	6
Technical Support .....	7
Warranty Information .....	7

## **Introduction**

Thank you for purchasing a StarTech.com 110/100/1000 Mbps PCI Ethernet Card. Featuring Auto-Negotiation capability and support for data transmission bandwidth up to 2000Mbps/sec, the card is easy to install and set up, and is fully Plug and Play compatible in a wide range of operating environments.

## **Features**

- Automatically configures IRQ and I/O addresses
- Two LEDs indicate network link/activity and 10/100 or 1000Mbps selection.
- Supports 32-bit PCI Bus Master for high performance and low processor utilization
- Supports early interrupt on transmit for increased performance
- Supports 32-bit 33/66MHz PCI Local Bus Master for high-speed operation

## **Before You Begin**

### ***System Requirements***

- An IBM compatible notebook computer with a Pentium-based processor
- An open PCI slot
- One of the following operating environments: Windows Vista/XP/ME/2000/98, Windows NT, Linux, NetWare 3.x/4.x, Lan Manager, TCP/IP software

### ***Contents***

This package should contain:

- 1 x PCI Ethernet Adapter card
- 1 x Driver disk
- 1 x Installation Guide

## Installation

### Installing the Network Card

**WARNING!** PCI cards, like all computer equipment, can be severely damaged by static electricity. Be sure that you are properly grounded before opening your computer case or touching your PCI card. StarTech.com recommends that you wear an anti-static strap when installing any computer component. If an anti-static strap is unavailable, discharge yourself of any static electricity build-up by touching a large grounded metal surface (such as the computer case) for several seconds. Also be careful to handle the PCI card by its edges and not the gold connectors.

1. Shut down all power connected to the computer, as well as all devices connected to the computer peripherally (i.e. Printers, Monitors, Scanners etc.). As an added step to ensure safe installation, unplug the power supply from the computer.
2. Remove the computer cover. For more detailed instruction on how to perform this step, please refer to the documentation that was included with your computer at the time of purchase.
3. Locate an empty PCI slot, removing the metal bracket covering the accompanying empty port/socket.
4. Position the serial card above the open PCI slot, ensuring that the card is aligned with the entire slot. Insert the card firmly into the slot, distributing force evenly across the length of the board. Once inserted, secure the card into the adjoining socket (previously covered by metal bracket), using the correct size screw (please consult documentation that accompanied purchase of computer).
5. Replace the computer cover and re-connect all power to the computer.

### Connecting Your Card to a Network

Depending on how you are planning on using the card, the device you are connecting it to and the type of cable you need may differ. To ensure maximum bandwidth capacity, it is recommended that you always use at least Category 5 Ethernet cable. If you are unsure of the type of cable required for your device, consult your device manufacturer.

**NOTE:** StarTech.com carries a wide range of Ethernet cables in various colors and lengths. For more information on these products, as well as tips and ideas for setting up and running your network, visit <http://www.startech.com> and click on the Networking tab near the top of the screen.

- If you are connecting your computer directly **to another computer**, you need to use a **crossover** cable.
- If you are connecting your computer to a **hub or switch**, you should use a **straight-through** cable.
- If you are connecting your computer to the **Internet** via a DSL or cable modem, you should use the cable recommended by the modem manufacturer.

### Installing the Drivers

**NOTE:** Windows Vista/XP/2000 will automatically detect the new hardware and install the necessary drivers without any user input. If you are asked to specify a location where the driver can be found, please specify:

**Windows 2000:** F:\LAN\Rtl8169\_8169S(B)\_8110S(B)\Win2K

**Windows XP:** F:\LAN\Rtl8169\_8169S(B)\_8110S(B)\WinXP

**Windows NT:** F:\LAN\Rtl8169\_8169S(B)\_8110S(B)\WinNT

*Please note:* F:\ denotes the drive letter assigned to your CD

The following are installation instructions for **Windows OS only**. If you are using Linux, Netware, or any other supported environment, consult the driver installation instructions available in the most recent driver download folder, available by locating ST1000BT32 on our website, <http://www.startech.com>, and clicking **Downloads**. Please note that the instructions that appear on your screen might not be identical to the instructions below, but will be similar.

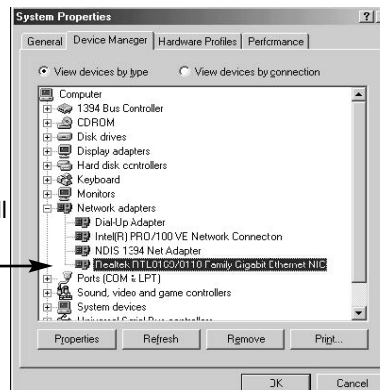
### Windows 98/ME

Once the card has been secured on the motherboard, power on the computer.

1. Windows will automatically detect the new hardware. Click **Next**.
2. Choose **Driver from disk provided by hardware manufacturer**, and direct Windows to the folder where the most recent drivers have been saved.
3. Follow any additional on-screen prompts and reboot your computer to complete the installation process.

### Verifying driver installation

To verify that the drivers have successfully been installed, right-click on **My Computer**, and select **Manage**. In the left-most column of the next screen (**Computer Management**), click on **Device Manager**. In the right-most column, click on the [+] symbol located next to **Network Adapters**, which will expand the Network Adapters listing, detailing the devices that are installed



### Monitoring Your Card

The LEDs on the front of the card are the best indication of the card's activity:

LED	Color	State	Indication
1000/ACT	Green	On	Connection at 1000Mbps
		Flashing	Sending/Receiving Data
100/ACT	Green	On	Connection at 100Mbps
		Flashing	Sending/Receiving Data

### Tips for Setting Up Your Network

For information and help on setting up your network, please consult the manufacturer of your operating system. The following section details troubleshooting steps only and is intended for Microsoft users on a local area network.

#### ***Make sure your computers are configured properly***

For your convenience, you should configure each of your computers so that they can "see" each other and share devices and files. To do this, you have to make sure that the following have been installed on your computers:

- Client for Microsoft Networks
- TCP/IP (Internet Protocol)
- File and Print Sharing

These clients, protocols, and services can be found in the following locations:

#### ***Windows Vista***

1. From the **Control Panel**, click on **Network and Sharing Center**.
2. Click **Manage Network Connections**.
3. Right-click on **Local Area Connection** and choose **Properties**.

#### ***Windows XP***

1. Click on **Start**, then click **My Network Places**.
2. Click **View Network Connections** in the Network Tasks box.
3. Right-click on **Local Area Connection** and choose **Properties**.

#### ***Windows 2000***

1. Click on **Start**, then **Settings**, then **Network and Dialup Connections**.

2. Double-click **Local Area Connections** and click the **Properties** button.

#### ***Windows Me/98***

1. Click on **Start**, then **Settings**, then **Control Panel**.
2. Double-click on **Network**.

**NOTE:** If you need to add any of the following components, check your Windows documentation for details.

#### ***Make sure all your computers are on the same workgroup***

To be able to communicate properly with each other, each computer must be located on the same workgroup. Each computer within a workgroup must have a unique name. To ensure compatibility between each version of Windows, keep your computer names under 13 characters long. To view, add, or edit your computer's name, do the following:

#### ***Windows XP***

1. Click **Start** and then **Control Panel**.
2. Double-click **System** then click on the computer name tab.

#### ***Windows 2000***

1. Click on **Start**, then **Settings**, then **Control Panel**.
2. Double-click on **System**.
3. Click on the **Network Identification** tab.

#### ***Windows ME/98/***

1. Click **Start**, then **Settings**, then **Control Panel**.
2. Double-click **Network**, then click the **Identification** tab.

#### ***Make Sure Your Sharing is Set Up Properly***

1. Go to your network dialog box using the procedure explained under "Make sure your computers are configured properly."
2. Click on **File and Print Sharing**.



3. Choose whether you want to install one, both, or neither of these options. Click **OK**.
4. Decide what files or folders you want to share. You can call up sharing options by right-clicking on a file or folder and choose "Sharing" (Windows 2000/Me/98) or "Sharing and Security" (Windows XP).

**NOTE:** If you are having **any** difficulties setting up or using your network, please contact your operating system vendor.

### Specifications

<b>Bus Type</b>	PCI
<b>Form Factor</b>	Standard Profile
<b>Connectors</b>	1 x RJ45 Port
<b>Maximum Data Transfer Rate</b>	1000Mbps (2000Mbps - Full-Duplex)
<b>Chipset</b>	Realtek RTL8110sC
<b>Regulatory certifications</b>	FCC, CE, ROHS

### Accessory Products from StarTech.com

Contact your local StarTech.com dealer or visit [www.startech.com](http://www.startech.com) for cables or other accessories that will help you get the best performance out of your new product.

#### **M45PATCH3BL**

3 ft Blue Molded Category 5e (350 MHz) UTP Patch Cable

#### **M45PATCH6BL**

6 ft Blue Molded Category 5e (350 MHz) UTP Patch Cable

## **Technical Support**

StarTech.com's lifetime technical support is an integral part of our commitment to provide industry-leading solutions. If you ever need help with your product, visit [www.startech.com/support](http://www.startech.com/support) and access our comprehensive selection of online tools, documentation, and downloads.

## **Warranty Information**

This product is backed by a lifetime warranty. In addition, StarTech.com warrants its products against defects in materials and workmanship for the periods noted, following the initial date of purchase. During this period, the products may be returned for repair, or replacement with equivalent products at our discretion. The warranty covers parts and labor costs only. StarTech.com does not warrant its products from defects or damages arising from misuse, abuse, alteration, or normal wear and tear.

## **Limitation of Liability**

In no event shall the liability of StarTech.com Ltd. and StarTech.com USA LLP (or their officers, directors, employees or agents) for any damages (whether direct or indirect, special, punitive, incidental, consequential, or otherwise), loss of profits, loss of business, or any pecuniary loss, arising out of or related to the use of the product exceed the actual price paid for the product.

Some states do not allow the exclusion or limitation of incidental or consequential damages. If such laws apply, the limitations or exclusions contained in this statement may not apply to you.

## **About StarTech.com**

StarTech.com is “The Professionals’ Source for Hard-to-Find Computer Parts”. Since 1985, we have been providing IT professionals with the quality products they need to complete their solutions. We offer an unmatched selection of computer parts, cables, server management solutions and A/V products and serve a worldwide market through our locations in the United States, Canada, the United Kingdom and Taiwan.

Visit **[www.startech.com](http://www.startech.com)** for complete information about all our products and to access exclusive interactive tools such as the Parts Finder and the KVM Reference Guide. StarTech.com makes it easy to complete almost any IT solution. Find out for yourself why our products lead the industry in performance, support, and value.

Revised: 22 October 2007 (Rev. C)

## Free Manuals Download Website

<http://myh66.com>

<http://usermanuals.us>

<http://www.somanuals.com>

<http://www.4manuals.cc>

<http://www.manual-lib.com>

<http://www.404manual.com>

<http://www.luxmanual.com>

<http://aubethermostatmanual.com>

Golf course search by state

<http://golfingnear.com>

Email search by domain

<http://emailbydomain.com>

Auto manuals search

<http://auto.somanuals.com>

TV manuals search

<http://tv.somanuals.com>