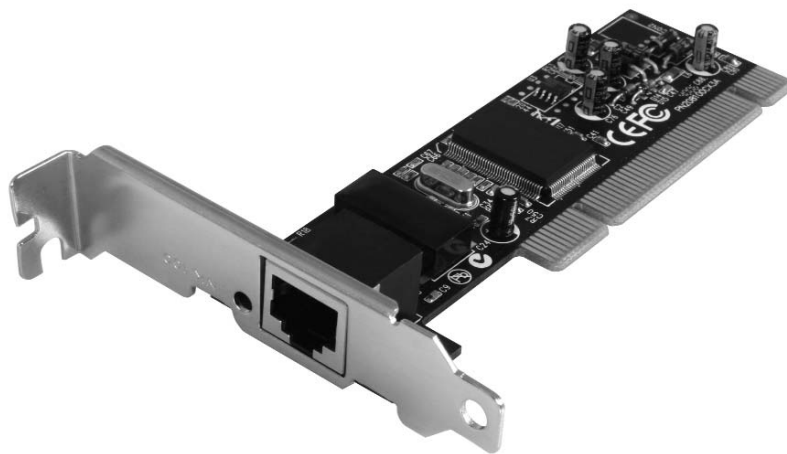


Network Adapter

10/100 Mbits/sec PCI Ethernet Network Card

ST100S
ST100SLP (Low Profile)

Instruction Manual



Actual product may vary from photo

StarTech.com
Making hard-to-find easy!

FCC Compliance Statement

This equipment has been tested and found to comply with the limits for a Class B digital device, pursuant to part 15 of the FCC Rules. These limits are designed to provide reasonable protection against harmful interference in a residential installation. This equipment generates, uses and can radiate radio frequency energy and, if not installed and used in accordance with the instructions, may cause harmful interference to radio communications. However, there is no guarantee that interference will not occur in a particular installation. If this equipment does cause harmful interference to radio or television reception, which can be determined by turning the equipment off and on, the user is encouraged to try to correct the interference by one or more of the following measures:

- Reorient or relocate the receiving antenna.
- Increase the separation between the equipment and receiver.
- Connect the equipment into an outlet on a circuit different from that to which the receiver is connected.
- Consult the dealer or an experienced radio/TV technician for help.

Use of Trademarks, Registered Trademarks, and other Protected Names and Symbols

This manual may make reference to trademarks, registered trademarks, and other protected names and/or symbols of third-party companies not related in any way to StarTech.com. Where they occur these references are for illustrative purposes only and do not represent an endorsement of a product or service by StarTech.com, or an endorsement of the product(s) to which this manual applies by the third-party company in question. Regardless of any direct acknowledgement elsewhere in the body of this document, StarTech.com hereby acknowledges that all trademarks, registered trademarks, service marks, and other protected names and/or symbols contained in this manual and related documents are the property of their respective holders.

Table of Contents

Introduction	1
Features	1
System Requirements	1
Package Contents	1
Installation	2
Installing the Network Card	2
Connecting Your Card to a Network	2
Installing the Drivers	3
Verifying Driver Installation	3
Monitoring your Card	3
Tips for Setting Up your Network	3
Specifications	6
Technical Support	6
Warranty Information	6

Introduction

Thank you for purchasing a StarTech.com 10/100 Mbps/sec PCI Ethernet card. Featuring Auto-Negotiation capability and support for data transmission bandwidth from 10Mbps to 100Mbps, the card is easy to install and set up, and is fully Plug and Play compatible in a wide range of operating environments.

Features

- Support for IEEE802.3x Full-Duplex flow control
- Capable of full and half-duplex communications
- Complies with industry standards: IEEE 802.3, 100BaseTX and 10BaseT standard
- Supports 32-bit PCI Bus Master for high performance and low processor utilization

System requirements:

- An IBM-compatible computer with a Pentium-based processor
- An available PCI slot
- One of the following operating environments: Windows Vista/XP/ME/2000/98/95, Windows NT, Linux, NetWare 3.x/4.x, Lan Manager, TCP/IP software

Package contents:

This package should contain:

- 1 x PCI Ethernet Adapter card
- 1 x Driver disk
- 1 x Installation Guide
- 1 x Full-size Bracket (ST100SLP only)

Installation

Installing the Network Card



WARNING! PCI cards, like all computer equipment, can be severely damaged by static electricity. Be sure that you are properly grounded before opening your computer case or touching your PCI card. StarTech.com recommends that you wear an anti-static strap when installing any computer component. If an anti-static strap is unavailable, discharge yourself of any static electricity build-up by touching a large grounded metal surface (such as the computer case) for several seconds. Also be careful to handle the PCI card by its edges and not the gold connectors.

1. Shut down all power connected to the computer, as well as all devices connected to the computer peripherally (i.e. Printers, Monitors, Scanners etc.). As an added step to ensure safe installation, unplug the power supply from the computer.
2. Remove the computer cover. For more detailed instruction on how to perform this step, please refer to the documentation that was included with your computer at the time of purchase.
3. Locate an empty PCI slot, removing the metal bracket covering the accompanying empty port/socket.
4. Position the serial card above the open PCI slot, ensuring that the card is aligned with the entire slot. Insert the card firmly into the slot, distributing force evenly across the length of the board. Once inserted, secure the card into the adjoining socket (previously covered by metal bracket), using the correct size screw (please consult documentation that accompanied purchase of computer).
5. Replace the computer cover and re-connect all power to the computer.

Connecting Your Card to a Network

Depending on how you are planning on using the card, the device you are connecting it to and the type of cable you need may differ. To take advantage of the NIC's 100 Mbits/sec capacity, it is recommended that you always use at least Category 5 Ethernet cable. If you are unsure of the type of cable required for your device, consult your device manufacturer.

NOTE: StarTech.com carries a wide range of Ethernet cables in various colors and lengths. For more information on these products, as well as tips and ideas for setting up and running your network, visit <http://www.startech.com> and click on the Networking tab near the top of the screen.

- If you are connecting your computer directly to another computer, you need to use a crossover cable.
- If you are connecting your computer to a hub or switch, you should use a straight-through cable.

- If you are connecting your computer to the Internet via a DSL or cable modem, you should use the cable recommended by the modem manufacturer.

Installing the Drivers

NOTE: Windows Vista/XP/2000 will automatically detect the new hardware and install the necessary drivers without any user input.

The following are installation instructions for Windows OS only. If you are using Linux, Netware, or any other supported environment, consult the driver installation instructions available in the most recent driver download folder, available by locating ST100S/ST100SLP on our website, <http://www.startech.com>, and clicking Downloads.

Windows 95/95/ME

1. Windows will automatically detect the new hardware. Click **Next**.
2. Choose **Driver from disk provided by hardware manufacturer**, and direct Windows to the folder where the most recent drivers have been saved.
3. Follow any additional on-screen prompts and reboot your computer to complete the installation process.

Verifying Driver Installation

To verify that the drivers have successfully been installed, right-click on **My Computer**, and select **Manage**. In the left-most column of the next screen (*Computer Management*), click on **Device Manager**. In the right-most column, click on the [+] symbol located next to Network Adapters, which will expand the Network Adapters listing, detailing the devices that are installed.

Monitoring Your Card

The LED on the front of the card is the best indication of the card's activity. If the Link/Activity LED is not lit, there is a connection error. Please ensure that all devices are turned on and that the network cable is properly connected at both ends. Also make sure that your network cables comply with EIA/TIA 568 and Category 5 specifications. If problems persist, power down all devices and disconnect all plugs. Wait at least ten seconds then plug the devices back in and power them up.

Tips for Setting Up Your Network

For information and help on setting up your network, please consult the manufacturer of your operating system. The following is section details troubleshooting steps only and is intended for Microsoft users on a local area network.

Make sure your computers are configured properly

For your convenience, you should configure each of your computers so that they can "see" each other and share devices and files. To do this, you have to make sure that the

following have been installed on your computers:

- Client for Microsoft Networks
- TCP/IP (Internet Protocol)
- File and Print Sharing

These clients, protocols, and services can be found in the following locations:

Windows Vista

1. From the **Control Panel**, click on **Network and Sharing Center**.
2. Click **Manage Network Connections**.
3. Right-click on **Local Area Connection** and choose **Properties**.

Windows XP

1. Click on **Start**, then click **My Network Places**.
2. Click **View Network Connections** in the **Network Tasks** box.
3. Right-click on **Local Area Connection** and choose **Properties**.

Windows 2000

1. Click on **Start**, then **Settings**, then **Network and Dialup Connections**.
2. Double-click **Local Area Connections** and click the **Properties** button.

Windows Me/98/95

1. Click on **Start**, then **Settings**, then **Control Panel**.
2. Double-click on **Network**.

NOTE: If you need to add any of the following components, check your Windows documentation for details.

Make sure all your computers are on the same workgroup

To be able to communicate properly with each other, each computer must be located on the same workgroup. Each computer within a workgroup must have a unique name. To ensure compatibility between each version of Windows, keep your computer names under 13 characters long. To view, add, or edit your computer's name, do the following:

Windows XP

1. Click **Start** and then **Control Panel**.
2. Double-click **System** then click on the computer name tab.

Windows 2000

1. Click on **Start**, then **Settings**, then **Control Panel**.
2. Double-click on **System**.
3. Click on the **Network Identification tab**.

Windows ME/98/95

1. Click **Start**, then **Settings**, then **Control Panel**.
2. Double-click **Network**, then click the **Identification tab**.

Make Sure Your Sharing is Set Up Properly

1. Go to your network dialog box using the procedure explained under “Make sure your computers are configured properly“ (page 3).
2. Click on **File** and **Print Sharing**.
3. Choose whether you want to install one, both, or neither of these options. Click **OK**.
4. Decide what files or folders you want to share. You can call up sharing options by right-clicking on a file or folder and choose **Sharing** (Windows 2000/Me/98/95) or **Sharing and Security** (Windows XP).

NOTE: If you are having any difficulties setting up or using your network, please contact your operating system vendor.

Specifications

Bus Type	PCI
Form Factor	Standard Profile
Connectors	1 x RJ45 Port
Maximum Data Transfer Rate	100Mbps
Chipset	Realtek RTL8100C
Regulatory certifications	FCC, CE, ROHS

Technical Support

StarTech.com's lifetime technical support is an integral part of our commitment to provide industry-leading solutions. If you ever need help with your product, visit www.startech.com/support and access our comprehensive selection of online tools, documentation, and downloads.

Warranty Information

This product is backed by a lifetime warranty. In addition, StarTech.com warrants its products against defects in materials and workmanship for the periods noted, following the initial date of purchase. During this period, the products may be returned for repair, or replacement with equivalent products at our discretion. The warranty covers parts and labor costs only. StarTech.com does not warrant its products from defects or damages arising from misuse, abuse, alteration, or normal wear and tear.

Limitation of Liability

In no event shall the liability of StarTech.com Ltd. and StarTech.com USA LLP (or their officers, directors, employees or agents) for any damages (whether direct or indirect, special, punitive, incidental, consequential, or otherwise), loss of profits, loss of business, or any pecuniary loss, arising out of or related to the use of the product exceed the actual price paid for the product. Some states do not allow the exclusion or limitation of incidental or consequential damages. If such laws apply, the limitations or exclusions contained in this statement may not apply to you.

About StarTech.com

StarTech.com is “The Professionals’ Source for Hard-to-Find Computer Parts”. Since 1985, we have been providing IT professionals with the quality products they need to complete their solutions. We offer an unmatched selection of computer parts, cables, server management solutions and A/V products and serve a worldwide market through our locations in the United States, Canada, the United Kingdom and Taiwan.

Visit www.startech.com for complete information about all our products and to access exclusive interactive tools such as the Parts Finder and the KVM Reference Guide. StarTech.com makes it easy to complete almost any IT solution. Find out for yourself why our products lead the industry in performance, support, and value.

Free Manuals Download Website

<http://myh66.com>

<http://usermanuals.us>

<http://www.somanuals.com>

<http://www.4manuals.cc>

<http://www.manual-lib.com>

<http://www.404manual.com>

<http://www.luxmanual.com>

<http://aubethermostatmanual.com>

Golf course search by state

<http://golfingnear.com>

Email search by domain

<http://emailbydomain.com>

Auto manuals search

<http://auto.somanuals.com>

TV manuals search

<http://tv.somanuals.com>