

# USB DVI KVM with Cables

Dual Port Compact USB DVI KVM with Cables and Audio Switching

SV211KDVI

Instruction Manual



Actual product may vary from photo

**STARVIEW**

**StarTech.com**  
Making hard-to-find easy!

## **FCC Compliance Statement**

This equipment has been tested and found to comply with the limits for a Class B digital device, pursuant to part 15 of the FCC Rules. These limits are designed to provide reasonable protection against harmful interference in a residential installation. This equipment generates, uses and can radiate radio frequency energy and, if not installed and used in accordance with the instructions, may cause harmful interference to radio communications. However, there is no guarantee that interference will not occur in a particular installation. If this equipment does cause harmful interference to radio or television reception, which can be determined by turning the equipment off and on, the user is encouraged to try to correct the interference by one or more of the following measures:

- Reorient or relocate the receiving antenna.
- Increase the separation between the equipment and receiver.
- Connect the equipment into an outlet on a circuit different from that to which the receiver is connected.
- Consult the dealer or an experienced radio/TV technician for help.

## **Use of Trademarks, Registered Trademarks, and other Protected Names and Symbols**

This manual may make reference to trademarks, registered trademarks, and other protected names and/or symbols of third-party companies not related in any way to StarTech.com. Where they occur these references are for illustrative purposes only and do not represent an endorsement of a product or service by StarTech.com, or an endorsement of the product(s) to which this manual applies by the third-party company in question. Regardless of any direct acknowledgement elsewhere in the body of this document, StarTech.com hereby acknowledges that all trademarks, registered trademarks, service marks, and other protected names and/or symbols contained in this manual and related documents are the property of their respective holders.

# Table of Contents

<b>Introduction</b> .....	<b>1</b>
Features .....	1
System Requirements .....	1
Package Contents .....	1
<b>Hardware Guide</b> .....	<b>2</b>
<b>Installation</b> .....	<b>3</b>
KVM Switcher Software .....	3
<b>Operation</b> .....	<b>4</b>
Front Panel Pushbuttons .....	4
Keyboard Hotkeys .....	4
KVM Switcher Software .....	5
Start Auto-scan .....	6
Stop Auto-scan .....	6
KVM Switcher Configuration .....	6
Fix Audio Port at PC x .....	6
Auto-scan Period .....	6
USB Device Sharing .....	6
<b>Specifications</b> .....	<b>7</b>
<b>Technical Support</b> .....	<b>7</b>
<b>Warranty Information</b> .....	<b>7</b>

# Introduction

Thank you for purchasing a StarTech.com Dual Port Compact USB DVI KVM with Cables and Audio Switching. Supporting both digital and analog video signal transmissions for display resolutions of up to 1600x1200 (digital) and 2048x1536 (analog), this compact and attractive switch provides access and control of two DVI enabled computers, as well as independent audio/microphone switching that provides an uninterrupted audio experience, even if you switch to the secondary computer.

## Features

- Support for high display resolution: 1920 x 1200 (digital), 2048 x 1536 (analog)
- Compact design
- Compatible with all USB supported Operating Systems
- USB 2.0 Hub

## System requirements:

- Two PC or Mac-based computers with DVI Video out and USB control capability
- A USB capable operating system installed on each computer
- A peripheral control set (Mouse, Keyboard)
- A DVI monitor

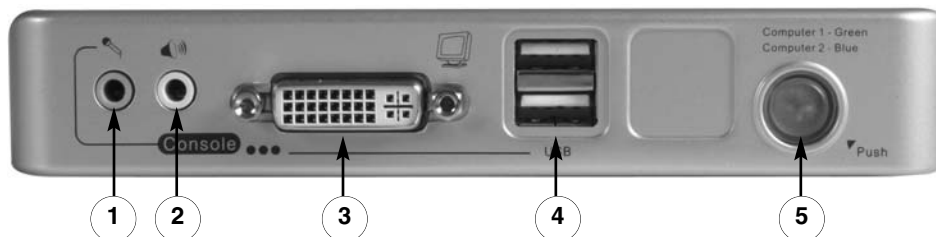
## Package contents:

*This package should contain:*

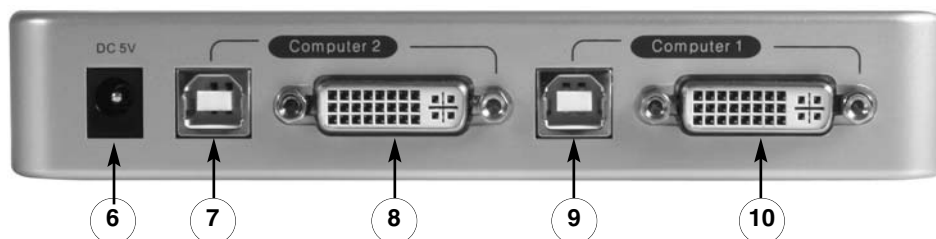
- 1 x Dual Port Compact USB DVI KVM Switch
- 1 x Power Adapter
- 2 x 4' DVI, Audio and Mic combo cables
- 2 x 4' USB cables

# Hardware Guide

## Front Panel



## Rear Panel



- ① Microphone IN port
- ② Speaker OUT port
- ③ Console Display DVI OUT port
- ④ Shared USB ports
- ⑤ Power Button
- ⑥ DC 5V Power IN port
- ⑦ USB Connection (for control peripherals) to Computer 2
- ⑧ DVI Input (from Computer 2)
- ⑨ USB Connection (for control peripherals) to Computer 1
- ⑩ DVI Input (from Computer 1)

# Installation

This section details how to install the optional software, as well as how to make the necessary physical connections between your peripherals and the KVM switch. For best results, ensure that all of the computers to be controlled are located as close as possible to the KVM switch and console peripherals (monitor, keyboard, mouse), as this will reduce the length of cabling required and reduces the chance of interference.

## KVM Switcher Software

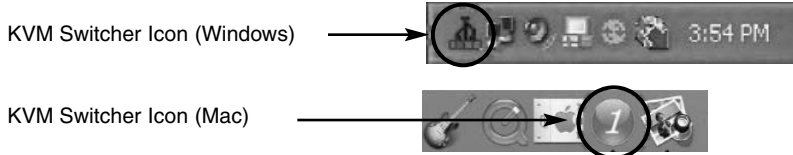
1. For each computer that will be connected to the KVM switch, please insert the companion CD ROM into your CD drive. The installation program **USBKVMIn.exe** should run automatically, however if it does not, please locate the file on the disk and double-click on the icon to launch the application:



**Please note:** If the installation software does not launch from the included Software CD, please copy it to your local hard disk and attempt to install it locally.

**Please note:** The KVM Switcher software is recommended for use on computers running Windows 98SE or higher, or Mac OS 10.4 (Tiger) or higher.

2. When the software Welcome Screen appears, please click on **Software Installation for Windows/Mac** to begin installation, and follow the on-screen instructions to completion. Once the software has been installed, you will see a KVM Switcher icon on the system tray of your desktop. Right-click on the icon to launch the operation menu, or double-click to evoke the configuration box.



### Other icons:

#### Windows



No live connection detected  
 Current Active connection on port 1  
 Current Active connection on port 2

#### Mac



Please note that the KVM Switcher Software supports both Windows and Mac OS operating system; for other operating systems such as Linux, the hotkey combination **Scroll Lock + Scroll Lock** can still be used as long as the computer is PC-based.

3. Connect the shared USB keyboard, mouse, monitor, speaker/headphone and microphone to the corresponding port on the front panel of the KVM Switch.
4. Connect each of the Computer connections (USB and DVI) to the computers you wish to control, using the included 3-in-1 KVM combo cables.
5. Optional: Connect the shared speaker and microphone to the appropriate ports on the front panel of the KVM Switch.

### Configuration Diagram



**Please note:** On some older computers, you may be required to manually enable the USB option in the BIOS, prior to being able to use a USB control set (mouse and keyboard).

## Operation

There are three methods to control your KVM Switch for PC and Audio/Mic channel selection: front panel pushbuttons, hotkey sequences or the KVM Switcher Software.

### Front Panel Pushbuttons

The front panel pushbuttons provide direct control over KVM switching operation. Simply press the button to switch to the corresponding PC port (as well as the audio/mic channel ports if binding is enabled). By default, PC port switching and audio/mic port switching are bound together, unless you bind the audio to a specific port.

**Please note:** You can use the front panel pushbuttons to switch to an empty port (not connected to a slave computer), but the keyboard hotkeys or KVM Switcher Software cannot perform the same function.

### Keyboard Hotkeys

**Please note:** Each keystroke within a hotkey sequence should be pressed within two seconds. Otherwise, the hotkey sequence will not be validated.

**Please note:** After switching ports, you must wait until the KVM Switcher icon updates accurately in the taskbar, before switching again.

**Please note:** Hotkeys are only functional while the computer operating system is running. If you wish to switch computer control during the boot phase, please use the front panel pushbuttons as necessary.

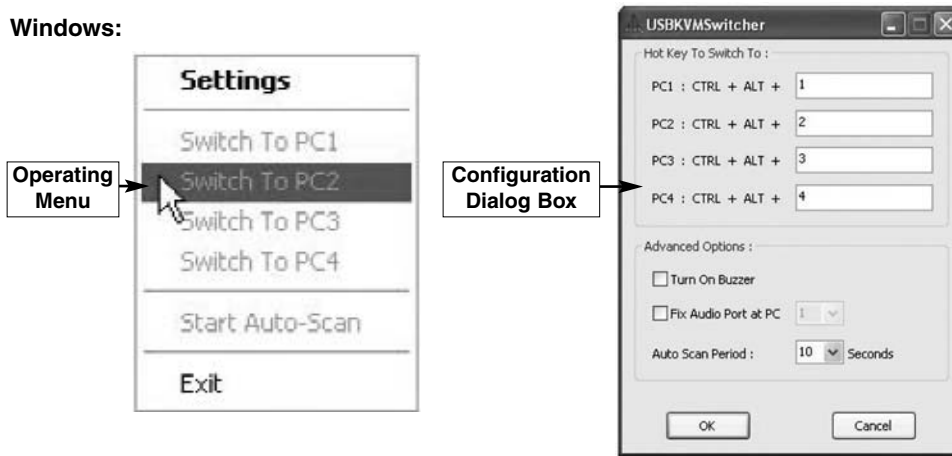
User Definable Hotkeys: **Hotkey sequence = Ctrl + Alt + [command key]**. Please note that these three keys must be pressed simultaneously. Upon the release of the keys, the switching action will be executed.

Universal Hotkeys Sequence: **Scroll Lock + Scroll Lock** switches to the next port.

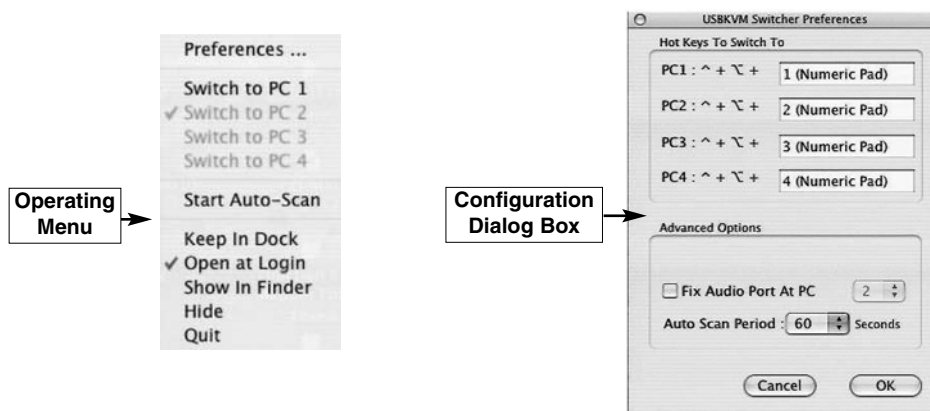
### KVM Switcher Software (Windows platform only)

Right-click on the KVM Switcher icon in the taskbar to evoke the operation menu, then select whichever PC is available for switching. Once you select a PC channel, it will immediately switch to the selected channel. Please note that the unconnected ports or the active port will be grayed out (non-selectable).

#### Windows:



#### Mac:





To change the command key, simply enter it into the field provided in the Configuration Dialog Box. Depending on the command key you've designated in the KVM Switcher Software, to switch to PC 'x':

**Hotkey sequence = Ctrl + Alt + [command key]\***

\*The default hotkey setting is CTRL + ALT + 1/2 for PCs 1 and 2. You can also use Scroll Lock + Scroll Lock to switch to the other computer

**Please note:** If you intend to modify the command key, you have to modify them on each of the computers connected to the switch.

### **Start Auto-scan**

Right-click the KVM Switcher icon in the taskbar to evoke the operating menu, then select **Start Auto-scan** to activate auto-scanning.

### **Stop Auto-scan**

While auto-scanning, right-click the KVM Switcher icon to evoke the operating menu, then select **Stop Auto-scan** to de-activate auto-scanning. Alternatively, you can press any button on the front panel to stop this function.

### **KVM Switcher Configuration**

Right-click the KVM Switcher icon and select **Settings** or double-click the icon to bring up the configuration dialog box.

### **Fix Audio Port at PC x**

Check this option, then select the PC to which you wish to fix the audio/mic channel. Once selected, the audio/mic channel will be fixed, and become non-switchable.

### **Auto-scan Period**

Select the Auto-scan period from 10 - 60 seconds, available in increments of 5 seconds. This setting will define the length of time the KVM Switch will wait before switching to the next PC.

### **USB Device Sharing**

The USB ports on the front panel of the switch are normally used for keyboard and mouse connections. However, they are USB 2.0 hub ports, and can easily be connected to any USB devices so that you can easily switch and share the connected devices among the two connected computers:



## Specifications

<b>Dimensions (LxWxH)</b>	154 mm (6.06") x 65.5 mm (2.58") x 27 mm (1.06")
<b>Regulatory Certifications</b>	ROHS, CE, WEEE, FCC
<b>PC Port Connectors</b>	2 x USB Type B 2 x DVI-I (integrated with audio&mic)
<b>Console Port Connectors</b>	2 x USB Type A (Keyboard & Mouse & USB 2.0/1.1 Devices) 1x DVI 15-pin female 1 x 3.5mm audio jack 1 x 3.5mm mic jack
<b>VGA Resolution</b>	1920 x 1200 (digital) / 2048 x 1536 (analog)
<b>Power Type</b>	DC 5V2A power receptacle

### Technical Support

StarTech.com's lifetime technical support is an integral part of our commitment to provide industry-leading solutions. If you ever need help with your product, visit [www.startech.com/support](http://www.startech.com/support) and access our comprehensive selection of online tools, documentation, and downloads.

### Warranty Information

This product is backed by a one-year warranty. In addition, StarTech.com warrants its products against defects in materials and workmanship for the periods noted, following the initial date of purchase. During this period, the products may be returned for repair, or replacement with equivalent products at our discretion. The warranty covers parts and labor costs only. StarTech.com does not warrant its products from defects or damages arising from misuse, abuse, alteration, or normal wear and tear.

### Limitation of Liability

In no event shall the liability of StarTech.com Ltd. and StarTech.com USA LLP (or their officers, directors, employees or agents) for any damages (whether direct or indirect, special, punitive, incidental, consequential, or otherwise), loss of profits, loss of business, or any pecuniary loss, arising out of or related to the use of the product exceed the actual price paid for the product. Some states do not allow the exclusion or limitation of incidental or consequential damages. If such laws apply, the limitations or exclusions contained in this statement may not apply to you.

## About StarTech.com

StarTech.com is “The Professionals’ Source for Hard-to-Find Computer Parts”. Since 1985, we have been providing IT professionals with the quality products they need to complete their solutions. We offer an unmatched selection of computer parts, cables, server management solutions and A/V products and serve a worldwide market through our locations in the United States, Canada, the United Kingdom and Taiwan.

Visit **[www.startech.com](http://www.startech.com)** for complete information about all our products and to access exclusive interactive tools such as the Parts Finder and the KVM Reference Guide. StarTech.com makes it easy to complete almost any IT solution. Find out for yourself why our products lead the industry in performance, support, and value.

23 January 2008 (Rev. A)

## Free Manuals Download Website

<http://myh66.com>

<http://usermanuals.us>

<http://www.somanuals.com>

<http://www.4manuals.cc>

<http://www.manual-lib.com>

<http://www.404manual.com>

<http://www.luxmanual.com>

<http://aubethermostatmanual.com>

Golf course search by state

<http://golfingnear.com>

Email search by domain

<http://emailbydomain.com>

Auto manuals search

<http://auto.somanuals.com>

TV manuals search

<http://tv.somanuals.com>