

## 1 Port Industrial USB to RS232 Serial Adapter with 5KV Isolation and 15KV ESD

ICUSB232IS



\*actual product may vary from photos

DE: Bedienungsanleitung - [de.startech.com](http://de.startech.com)

FR: Guide de l'utilisateur - [fr.startech.com](http://fr.startech.com)

ES: Guía del usuario - [es.startech.com](http://es.startech.com)

IT: Guida per l'uso - [it.startech.com](http://it.startech.com)

NL: Gebruiksaanwijzing - [nl.startech.com](http://nl.startech.com)

PT: Guia do usuário - [pt.startech.com](http://pt.startech.com)

For the most up-to-date information, please visit: [www.startech.com](http://www.startech.com)

Manual Revision: 03/14/2014

Download from [Www.Somanuals.com](http://Www.Somanuals.com). All Manuals Search And Download.

## FCC Compliance Statement

This equipment has been tested and found to comply with the limits for a Class B digital device, pursuant to part 15 of the FCC Rules. These limits are designed to provide reasonable protection against harmful interference in a residential installation. This equipment generates, uses and can radiate radio frequency energy and, if not installed and used in accordance with the instructions, may cause harmful interference to radio communications. However, there is no guarantee that interference will not occur in a particular installation. If this equipment does cause harmful interference to radio or television reception, which can be determined by turning the equipment off and on, the user is encouraged to try to correct the interference by one or more of the following measures:

- Reorient or relocate the receiving antenna.
- Increase the separation between the equipment and receiver.
- Connect the equipment into an outlet on a circuit different from that to which the receiver is connected.
- Consult the dealer or an experienced radio/TV technician for help.

## Use of Trademarks, Registered Trademarks, and other Protected Names and Symbols

This manual may make reference to trademarks, registered trademarks, and other protected names and/or symbols of third-party companies not related in any way to StarTech.com. Where they occur these references are for illustrative purposes only and do not represent an endorsement of a product or service by StarTech.com, or an endorsement of the product(s) to which this manual applies by the third-party company in question. Regardless of any direct acknowledgement elsewhere in the body of this document, StarTech.com hereby acknowledges that all trademarks, registered trademarks, service marks, and other protected names and/or symbols contained in this manual and related documents are the property of their respective holders.

# Table of Contents

<b>Product Overview .....</b>	<b>1</b>
Front View .....	1
Rear View.....	1
RS232 Pinout.....	1
<b>Introduction.....</b>	<b>2</b>
Packaging Contents .....	2
System Requirements.....	2
<b>Installation .....</b>	<b>3</b>
DIN Rail Bracket Installation .....	3
Driver Installation.....	4
Verifying Installation.....	6
<b>Specifications.....</b>	<b>8</b>
<b>Technical Support .....</b>	<b>9</b>
<b>Warranty Information.....</b>	<b>9</b>

# Product Overview

## Front View



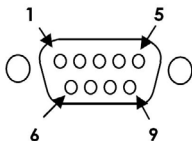
USB Mini-B  
(5 pin) Female

## Rear View



DB-9 (9 pin;  
D-Sub) Male

## RS232 Pinout



<b>Pin 1</b>	DCD	<b>Pin 6</b>	DSR
<b>Pin 2</b>	RXD	<b>Pin 7</b>	RTS
<b>Pin 3</b>	TXD	<b>Pin 8</b>	CTS
<b>Pin 4</b>	DTR	<b>Pin 9</b>	RI
<b>Pin 5</b>	GND		

# Introduction

Add a galvanically isolated RS232 serial port with ESD protection through a USB port - DIN Rail Mountable

## Packaging Contents

- 1x USB to Serial Adapter
- 1x DIN Rail Bracket
- 1x 1m (3ft) USB Cable
- 1x Driver CD
- 1x Instruction Manual

## System Requirements

- Available USB Port
- Windows® 8 (32/64bit), 7 (32/64), Vista(32/64), XP(32/64), CE(4.2, 5.2), Windows® Server 2008 R2, 2003(32/64), Mac OS 10.x (Tested up to 10.9), Linux 2.6.x - 3.9.x

# Installation

## DIN Rail Bracket Installation

If you are mounting the ICUSB232IS product onto a DIN Rail, you will first need to attach the included DIN Rail Bracket to the device. Note that the spring clip portion of the bracket should be at the bottom.

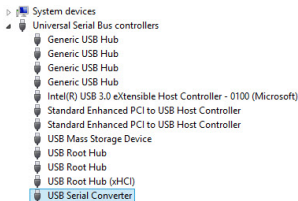
1. Hold the ICUSB232IS device with the USB port facing down and place the DIN rail bracket on the back of the device, lining up the screw holes.
2. Insert the 2 included screws and tighten.



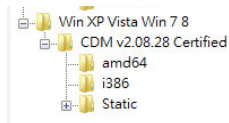
# Driver Installation

## Windows

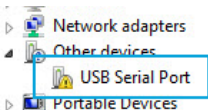
1. Upon starting Windows, if the *Found New Hardware* wizard appears on the screen, cancel/close the window and insert the included Driver CD into the computer's CD/DVD drive.
2. Open the Device Manager by right-clicking on **Computer**, and then select **Manage**. In the new *Computer Management* window, select **Device Manager** from the left window panel (For Windows 8, open the **Control Panel** and select **Device Manager**).
3. Expand the *Universal Serial Bus Controllers* section and right-click on the newly detected "USB Serial Converter" device



4. Select **Update Driver Software**, which will start the *Update Driver Software Wizard*.
5. On the *How do you want to search for driver software?* window, click **Browse my computer for driver software**.
6. Click the **Browse** button, and navigate to your CD/DVD drive, then to the "Win XP Vista Win 7 8" folder.



7. Select the appropriate 32 (i386) or 64-bit (amd64) OS folder for the system you are using and click **Next** to install the drivers.
8. Repeat steps 4-7 for the "USB Serial Port" device located in the *Other Devices* section.

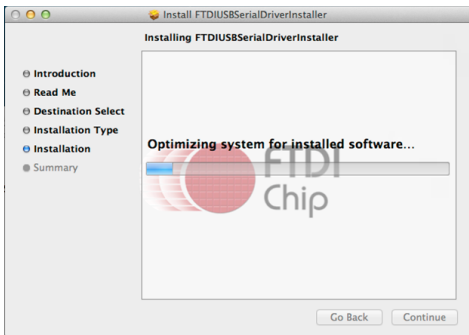


## Mac OS

1. Connect the USB Serial Adapter to an available USB port.
2. Insert the provided CD into your DVD/CD-ROM drive.
3. Browse to the Mac OS folder on the disc.
4. Mount the **FTDIUSBSerialDriver\_v2\_2\_18.dmg** file, and then run the **FTDIUSBSerialDriver.pkg** application file that is appropriate for the version of Mac OS you are running to start the install.



5. Follow the on-screen instructions to complete the installation.

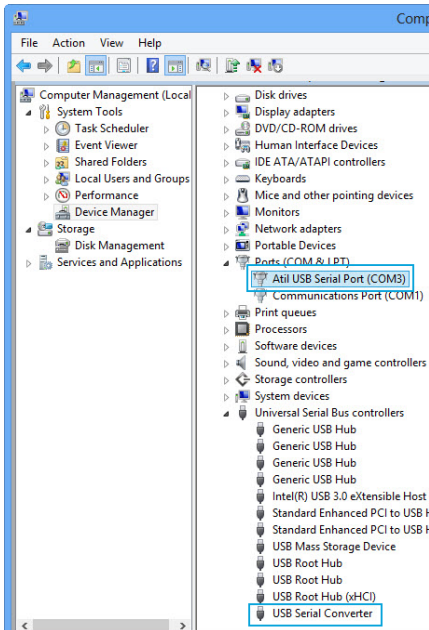


**NOTE:** You may be prompted to restart once the install completes.



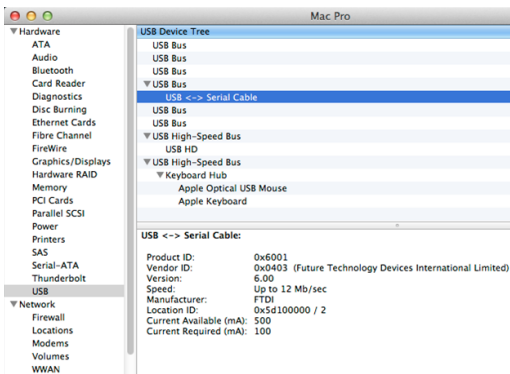
# Verifying Installation

1. Open the *Device Manager* by right-clicking on **Computer**, and then select **Manage**. In the new *Computer Management* window, select **Device Manager** from the left window panel (For Windows 8, open the **Control Panel** and select **Device Manager**).
2. Expand the Ports (COM & LPT), and Universal Serial Bus Controllers sections. On a successful install, you should see 1 *Attil USB Serial Port (COMx)* device under the Ports (COM & LPT) section, and 1 *USB Serial Converter* device under Universal Serial Bus Controllers with no exclamation points or question marks.



## Mac OS

1. Open the *System Profiler* by clicking the Apple symbol in the top left corner, selecting **About this Mac**, then select **System Report**
2. Expand the "Hardware" section and click "USB" in the left column. With the adapter connected, you should see the following device in the list.



# Specifications

<b>Host Interface</b>	USB 2.0
<b>Chipset ID</b>	FTDI - FT232RL
<b>External Connectors</b>	1x DB-9 (9 pin; D-Sub) Male 1x USB Mini-B (5 pin) Female
<b>Supported Protocols</b>	RS-232
<b>Maximum Baud Rate</b>	921.6 Kbps
<b>Data Bits</b>	7, 8
<b>Parity</b>	Even, Odd, Mark, Space, None
<b>Stop Bits</b>	1, 2
<b>Isolation</b>	5KV
<b>ESD Protection</b>	15KV
<b>Operating Temperature</b>	-30°C to 75°C (-22°F to 167°F)
<b>Storage Temperature</b>	-40°C to 85°C (-40°F to 185°F)
<b>Humidity</b>	5~95% RH (Non-Condensing)
<b>Dimensions</b>	42 x 93 x 22mm
<b>Weight</b>	25g
<b>Compatible Operating Systems</b>	Windows® 8 (32/64bit), 7 (32/64), Vista (32/64), XP (32/64), CE (4.2, 5.2) Windows® Server 2008 R2, 2003(32/64) Mac OS 10.x (Tested up to 10.9) Linux 2.6.x - 3.9.x

# Technical Support

StarTech.com's lifetime technical support is an integral part of our commitment to provide industry-leading solutions. If you ever need help with your product, visit [www.startech.com/support](http://www.startech.com/support) and access our comprehensive selection of online tools, documentation, and downloads.

For the latest drivers/software, please visit [www.startech.com/downloads](http://www.startech.com/downloads)

## Warranty Information

This product is backed by a two year warranty.

In addition, StarTech.com warrants its products against defects in materials and workmanship for the periods noted, following the initial date of purchase. During this period, the products may be returned for repair, or replacement with equivalent products at our discretion. The warranty covers parts and labor costs only. StarTech.com does not warrant its products from defects or damages arising from misuse, abuse, alteration, or normal wear and tear.

### Limitation of Liability

In no event shall the liability of StarTech.com Ltd. and StarTech.com USA LLP (or their officers, directors, employees or agents) for any damages (whether direct or indirect, special, punitive, incidental, consequential, or otherwise), loss of profits, loss of business, or any pecuniary loss, arising out of or related to the use of the product exceed the actual price paid for the product. Some states do not allow the exclusion or limitation of incidental or consequential damages. If such laws apply, the limitations or exclusions contained in this statement may not apply to you.

Hard-to-find made easy. At StarTech.com, that isn't a slogan. It's a promise.

StarTech.com is your one-stop source for every connectivity part you need. From the latest technology to legacy products — and all the parts that bridge the old and new — we can help you find the parts that connect your solutions.

We make it easy to locate the parts, and we quickly deliver them wherever they need to go. Just talk to one of our tech advisors or visit our website. You'll be connected to the products you need in no time.

Visit [www.startech.com](http://www.startech.com) for complete information on all StarTech.com products and to access exclusive resources and time-saving tools.

*StarTech.com is an ISO 9001 Registered manufacturer of connectivity and technology parts. StarTech.com was founded in 1985 and has operations in the United States, Canada, the United Kingdom and Taiwan servicing a worldwide market.*

## Free Manuals Download Website

<http://myh66.com>

<http://usermanuals.us>

<http://www.somanuals.com>

<http://www.4manuals.cc>

<http://www.manual-lib.com>

<http://www.404manual.com>

<http://www.luxmanual.com>

<http://aubethermostatmanual.com>

Golf course search by state

<http://golfingnear.com>

Email search by domain

<http://emailbydomain.com>

Auto manuals search

<http://auto.somanuals.com>

TV manuals search

<http://tv.somanuals.com>