

## 16 Port Rack Mountable USB to Serial Hub

ICUSB23216F



\*actual product may vary from photos

DE: Bedienungsanleitung - [de.startech.com](http://de.startech.com)

FR: Guide de l'utilisateur - [fr.startech.com](http://fr.startech.com)

ES: Guía del usuario - [es.startech.com](http://es.startech.com)

IT: Guida per l'uso - [it.startech.com](http://it.startech.com)

NL: Gebruiksaanwijzing - [nl.startech.com](http://nl.startech.com)

PT: Guia do usuário - [pt.startech.com](http://pt.startech.com)

For the most up-to-date information, please visit: [www.startech.com](http://www.startech.com)

Manual Revision: 05/24/2011

Download from [Www.Somanuals.com](http://Www.Somanuals.com). All Manuals Search And Download.

## FCC Compliance Statement

This equipment has been tested and found to comply with the limits for a Class B digital device, pursuant to part 15 of the FCC Rules. These limits are designed to provide reasonable protection against harmful interference in a residential installation. This equipment generates, uses and can radiate radio frequency energy and, if not installed and used in accordance with the instructions, may cause harmful interference to radio communications. However, there is no guarantee that interference will not occur in a particular installation. If this equipment does cause harmful interference to radio or television reception, which can be determined by turning the equipment off and on, the user is encouraged to try to correct the interference by one or more of the following measures:

- Reorient or relocate the receiving antenna.
- Increase the separation between the equipment and receiver.
- Connect the equipment into an outlet on a circuit different from that to which the receiver is connected.
- Consult the dealer or an experienced radio/TV technician for help.

## Use of Trademarks, Registered Trademarks, and other Protected Names and Symbols

This manual may make reference to trademarks, registered trademarks, and other protected names and/or symbols of third-party companies not related in any way to StarTech.com. Where they occur these references are for illustrative purposes only and do not represent an endorsement of a product or service by StarTech.com, or an endorsement of the product(s) to which this manual applies by the third-party company in question. Regardless of any direct acknowledgement elsewhere in the body of this document, StarTech.com hereby acknowledges that all trademarks, registered trademarks, service marks, and other protected names and/or symbols contained in this manual and related documents are the property of their respective holders.

# Table of Contents

<b>Introduction</b> .....	<b>1</b>
Packaging Contents .....	1
System Requirements.....	1
Front View .....	2
Rear View .....	2
<b>Installation</b> .....	<b>3</b>
Driver Installation.....	3
Verifying Installation.....	4
<b>Pinout</b> .....	<b>5</b>
<b>Specifications</b> .....	<b>6</b>
<b>Technical Support</b> .....	<b>7</b>
<b>Warranty Information</b> .....	<b>7</b>

# Introduction

The ICUSB23216F 16 Port Rack Mountable FTDI USB to Serial RS232 Adapter Hub adds 16 RS232 Serial ports with data transfer rates up to 921.6 Kbps for control by a desktop or laptop computer system using a single USB port.

This durable hardened USB to RS232 hub offers an all metal chassis, which fits into standard 19" server storage racks for an organized industrial USB to COM port solution, and an extended -40°C to 85°C (-40°F to 185°F) operating temperature range allows for reliable use in even the harshest environments. Includes both an AC adapter and Terminal Block power options.

A reliable FTDI USB to serial chipset provides simple installation into a broad range of operating systems including Windows®, Linux and Mac OS, as well as COM port retention in the event the device is disconnected.

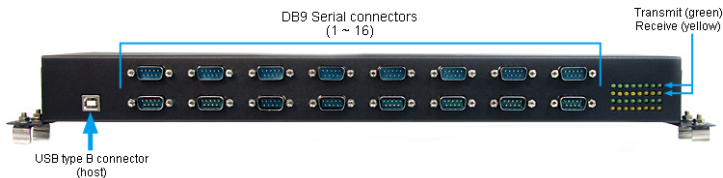
## Packaging Contents

- 1 x USB to RS232 Hub
- 1 x USB Cable
- 2 x Rack Mount Bracket
- 2 x DIN Rail Mount Bracket
- 1 x Power Adapter
- 1 x Driver CD
- 1 x Instruction Manual

## System Requirements

- USB enabled host computer system with available USB port
- Microsoft® Windows® 2000/XP/Server 2003/Vista/Server 2008 R2/7 (32/64-bit), or Windows CE 4.2/5.0/6.0, or Apple® Mac OS® 9.x/10.x, or Linux® kernel 2.4.x/2.6.x

## Front View



## Rear View



# Installation

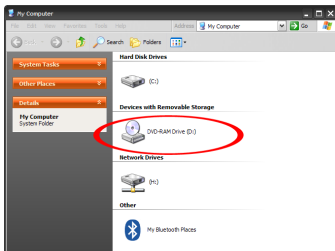
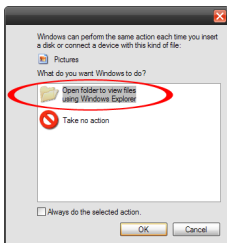


Please ensure that the driver installation is complete prior to the physical installation (plugging in) of the USB RS232 Serial Hub.

## Driver Installation

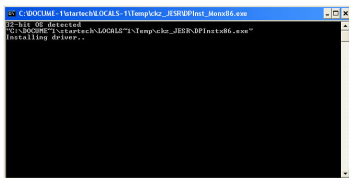
### Windows 2000/XP/Server 2003

1. Before connecting the Serial Hub to the host computer, insert the included Driver CD into the computer's CD/DVD drive.
2. AutoPlay should automatically launch and display all of the folders on the CD. If not, open "My Computer" and double-click on the CD/DVD drive.



\*installation photos for reference only

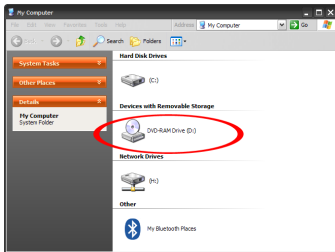
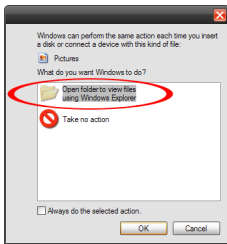
3. Enter the folder "232 drv\_100804", then double-click the file "Win\_Setup.exe".
4. This will launch the driver Installation wizard. The installation screen will automatically close once complete, and all the necessary drivers installed.



5. Connect the Serial Hub to the computer via USB. The Serial Hub will be automatically detected and Windows should begin installing the drivers.
6. Once Windows has installed the drivers, the serial ports will be ready for use.

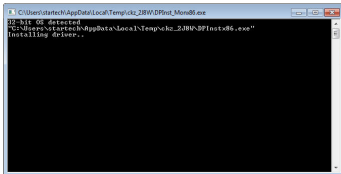
## Windows Vista/7/Server 2008 R2

1. Before connecting the Serial Hub to the host computer, insert the included Driver CD into the computer's CD/DVD drive.
2. AutoPlay should automatically launch and give you the option to display all of the folders on the CD. If not, open "Computer" and double-click on the CD/DVD drive.



\*installation photos for reference only

3. Enter the folder "232 drv\_100804", then double-click the file "Win\_Setup.exe".
4. This will launch the driver Installation wizard. The installation screen will automatically close once complete, and all the necessary drivers installed.

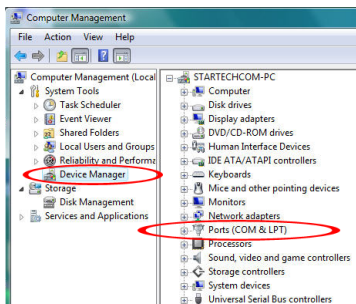
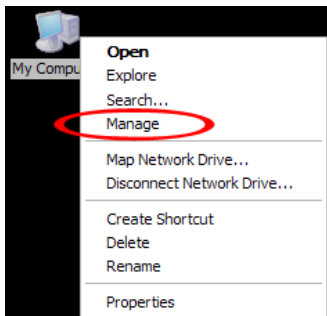


5. Connect the Serial Hub to the computer via USB. The Serial Hub will be automatically detected and Windows should begin installing the drivers.
6. Once Windows has installed the drivers, the serial ports will be ready for use.

## Verifying Installation

### Windows 2000/XP/Server 2003/Vista/Server 2008 R2/7

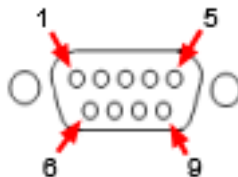
From the main desktop, right-click on "My Computer" ("Computer" in Vista/7), then select Manage. In the new Computer Management window, select Device Manager from the left window panel.



Double-click on the "Ports (COM & LPT)" option. The additional COM ports should be listed under this category.

## Pinout

Pin	Signal
1	DCD
2	RxD
3	TxD
4	DTR
5	GND
6	DSR
7	RTS
8	CTS
9	RI





# Specifications

<b>Host Interface</b>	USB 2.0
<b>Chipset ID</b>	FTDI FT232R
<b>External Connectors</b>	16 x DB9 serial male 1 x USB type B female 1 x DC Power 1 x 2-wire terminal block
<b>LEDs</b>	16 x Transmit Activity 16 x Receive Activity
<b>Supported Protocols</b>	RS232
<b>Maximum Data Transfer Rate</b>	921.6 Kbps (per port)
<b>Data Bits</b>	7, 8
<b>Parity</b>	Odd, Even, Mark, Space, None
<b>Stop Bits</b>	1, 2
<b>Buffer Size</b>	256 byte transmit 128 byte receive
<b>Rack Mountable</b>	Yes
<b>Enclosure Material</b>	Metal
<b>Power Supply</b>	12V DC, 2500 mA, center positive, type N plug
<b>Operating Temperature</b>	-40°C ~ 85°C (-40°F ~ 185°F)
<b>Storage Temperature</b>	-65°C ~ 150°C (-85°F ~ 302°F)
<b>Humidity</b>	0% ~ 60% RH
<b>Dimensions (LxWxH)</b>	430.0mm x 120.0mm x 45.0mm
<b>Weight</b>	1520g
<b>Compatible Operating Systems</b>	Windows 2000/XP/Server 2003/Vista/ Server 2008 R2/7 (32/64-bit), CE 4.2/5.0/6.0, Mac OS 9.x/10.x, Linux 2.4.x/2.6.x

# Technical Support

StarTech.com's lifetime technical support is an integral part of our commitment to provide industry-leading solutions. If you ever need help with your product, visit [www.startech.com/support](http://www.startech.com/support) and access our comprehensive selection of online tools, documentation, and downloads.

For the latest drivers/software, please visit [www.startech.com/downloads](http://www.startech.com/downloads)

## Warranty Information

This product is backed by a one year warranty.

In addition, StarTech.com warrants its products against defects in materials and workmanship for the periods noted, following the initial date of purchase. During this period, the products may be returned for repair, or replacement with equivalent products at our discretion. The warranty covers parts and labor costs only. StarTech.com does not warrant its products from defects or damages arising from misuse, abuse, alteration, or normal wear and tear.

### Limitation of Liability

In no event shall the liability of StarTech.com Ltd. and StarTech.com USA LLP (or their officers, directors, employees or agents) for any damages (whether direct or indirect, special, punitive, incidental, consequential, or otherwise), loss of profits, loss of business, or any pecuniary loss, arising out of or related to the use of the product exceed the actual price paid for the product. Some states do not allow the exclusion or limitation of incidental or consequential damages. If such laws apply, the limitations or exclusions contained in this statement may not apply to you.

Hard-to-find made easy. At StarTech.com, that isn't a slogan. It's a promise.

StarTech.com is your one-stop source for every connectivity part you need. From the latest technology to legacy products — and all the parts that bridge the old and new — we can help you find the parts that connect your solutions.

We make it easy to locate the parts, and we quickly deliver them wherever they need to go. Just talk to one of our tech advisors or visit our website. You'll be connected to the products you need in no time.

Visit [www.startech.com](http://www.startech.com) for complete information on all StarTech.com products and to access exclusive resources and time-saving tools.

*StarTech.com is an ISO 9001 Registered manufacturer of connectivity and technology parts. StarTech.com was founded in 1985 and has operations in the United States, Canada, the United Kingdom and Taiwan servicing a worldwide market.*

## Free Manuals Download Website

<http://myh66.com>

<http://usermanuals.us>

<http://www.somanuals.com>

<http://www.4manuals.cc>

<http://www.manual-lib.com>

<http://www.404manual.com>

<http://www.luxmanual.com>

<http://aubethermostatmanual.com>

Golf course search by state

<http://golfingnear.com>

Email search by domain

<http://emailbydomain.com>

Auto manuals search

<http://auto.somanuals.com>

TV manuals search

<http://tv.somanuals.com>