

Industrial 4 Port RS232/422/485 to Dual Ethernet Serial Device Server - PoE PD

NETRS42348PD



*actual product may vary from photos

DE: Bedienungsanleitung - de.startech.com

FR: Guide de l'utilisateur - fr.startech.com

ES: Guía del usuario - es.startech.com

IT: Guida per l'uso - it.startech.com

NL: Gebruiksaanwijzing - nl.startech.com

PT: Guia do usuário - pt.startech.com

For the most up-to-date information, please visit: www.startech.com

Manual Revision: 11/22/2013

Download from Www.Somanuals.com. All Manuals Search And Download.

FCC Compliance Statement

This equipment has been tested and found to comply with the limits for a Class A digital device, pursuant to part 15 of the FCC Rules. These limits are designed to provide reasonable protection against harmful interference in a residential installation. This equipment generates, uses and can radiate radio frequency energy and, if not installed and used in accordance with the instructions, may cause harmful interference to radio communications. However, there is no guarantee that interference will not occur in a particular installation. If this equipment does cause harmful interference to radio or television reception, which can be determined by turning the equipment off and on, the user is encouraged to try to correct the interference by one or more of the following measures:

- Reorient or relocate the receiving antenna.
- Increase the separation between the equipment and receiver.
- Connect the equipment into an outlet on a circuit different from that to which the receiver is connected.
- Consult the dealer or an experienced radio/TV technician for help.

This device complies with part 15 of the FCC Rules. Operation is subject to the following two conditions: (1) This device may not cause harmful interference, and (2) this device must accept any interference received, including interference that may cause undesired operation.

Changes or modifications not expressly approved by StarTech.com could void the user's authority to operate the equipment.

Use of Trademarks, Registered Trademarks, and other Protected Names and Symbols

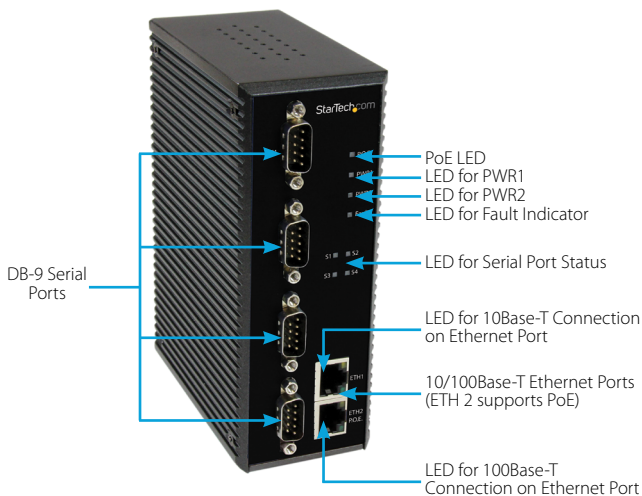
This manual may make reference to trademarks, registered trademarks, and other protected names and/or symbols of third-party companies not related in any way to StarTech.com. Where they occur these references are for illustrative purposes only and do not represent an endorsement of a product or service by StarTech.com, or an endorsement of the product(s) to which this manual applies by the third-party company in question. Regardless of any direct acknowledgement elsewhere in the body of this document, StarTech.com hereby acknowledges that all trademarks, registered trademarks, service marks, and other protected names and/or symbols contained in this manual and related documents are the property of their respective holders.

Table of Contents

Product Diagram	1
Front View	1
Terminal Block Power Connector	2
DB-9 Connector Pinout	2
Introduction	3
Packaging Contents	3
System Requirements.....	3
Installation	4
Hardware Installation	4
Software Installation.....	5
Operation	5
Specifications.....	7
Technical Support	8
Warranty Information.....	8

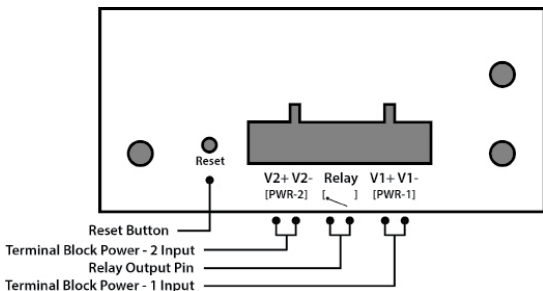
Product Diagram

Front View

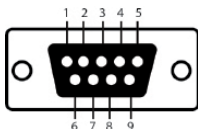


Terminal Block Power Connector

The device server can be powered using a PoE connection, or using the Terminal Block connector as outlined below.



DB-9 Connector Pinout



Pin#	RS 232	RS 422	RS 485 (4 wire)	RS 485 (2 wire)
1	DCD	RXD-	RXD-	
2	RXD	RXD+	RXD+	
3	TXD	TXD+	TXD+	DATA+
4	DTR	TXD-	TXD-	DATA-
5	GND	GND	GND	GND
6	DSR			
7	RTS			
8	CTS			
9	RI			
RS 232 mod act as DTE				

Introduction

Packaging Contents

- 1x Serial Device Server Unit
- 1x DIN Rail Kit
- 1x Wall-Mount Kit/ Screws
- 2x RJ-45 Dust Covers
- 1x Quick Installation Guide
- 1x Software CD

System Requirements

- Windows® 8 (32/64bit), 7 (32/64), Vista(32/64), XP(32/64), Windows® Server 2012, 2008 R2, 2003(32/64)

Installation

Hardware Installation

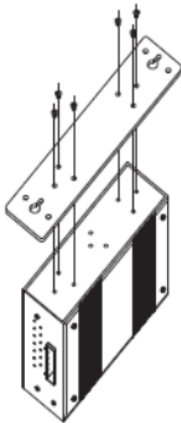
The server can be installed on a DIN rail or it can be wall-mounted.

Installation on a DIN-Rail:

1. Tilt the unit, making sure that the metal spring located at the back is positioned on top of the DIN rail.
2. Push the unit towards the rail until a “click” sound is heard.

Installation on a Wall:

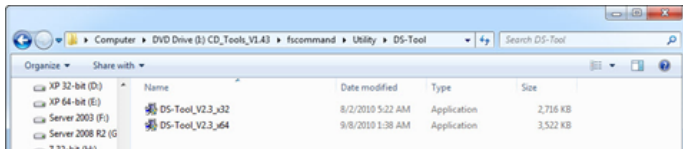
1. Remove the DIN-rail kit preinstalled on the unit.
2. Install the wall-mount panel included using the 6 screws found in the package.



3. Mount the unit on the wall using the appropriate hardware for the surface you are mounting to.

Software Installation

1. Insert the provided CD into your DVD/CD-ROM drive.
2. Browse to the folder "fsccommand\Utility\DS-Tool" and execute the installer "Startech_V1.0_xxxxxxx"

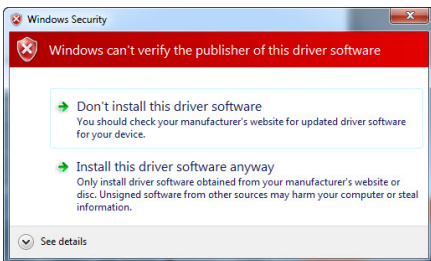


3. Follow the on-screen instructions to complete the installation.

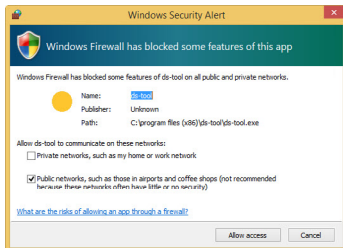
Operation

For full operating instructions, please visit www.startech.com/NETRS42348PD

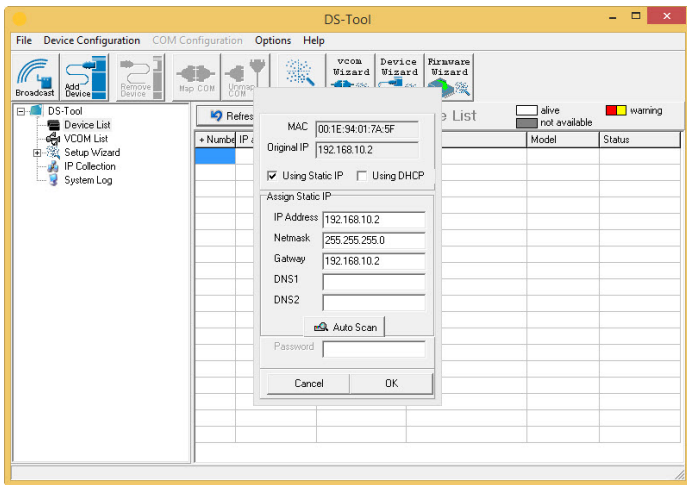
1. Start the DS-Tool, allow the install of the driver



2. Allow access to the DS-Tool on the Windows Firewall



- Once the utility opens, click the "Broadcast" button to detect the device server. The default IP address of device is "192.168.10.2".
- Once detected, click the checkbox beside the device you would like to configure, then click the "Add" button to configure your desired IP settings (Static / DHCP).



To add a virtual COM port, please use the VCOM Wizard and follow the steps.

Specifications

Interface	Serial
Ports	4
Supported Protocols	ICMP, IP, TCP, UDP, DHCP, BOOTP, ARP/RARP, DNS, SNMP MIB II, HTTPS, SSH
Connectors	4x DB-9 male, 1x RJ-45 1x Power over Ethernet RJ-45 1x 6pin Terminal Block
LED Indicator(s)	2x Ethernet Link, P.O.E, PWR1,PWR2, fault, S1, S2, S3, S4
Supported Serial Protocols	RS232/422/485
Ethernet Link Speed	10/100 Mbps
Maximum Baud Rate	460.8 Kbps
Power Input	Terminal Block: 12~48VDC
Enclosure Material	Metal
Operating Temperature	-10 to 70°C (14 to 158°F)
Storage Temperature	-40 to 85°C (-40 to 185°F)
Humidity	5% to 95% Non-condensing
Dimensions	106.1mm x 52mm x 144.3 mm
Weight	682 g
Compatible Operating Systems	Windows® 8 (32/64bit), 7 (32/64), Vista(32/64), XP(32/64),Windows® Server 2012, 2008 R2, 2003(32/64)

Technical Support

StarTech.com's lifetime technical support is an integral part of our commitment to provide industry-leading solutions. If you ever need help with your product, visit www.startech.com/support and access our comprehensive selection of online tools, documentation, and downloads.

For the latest drivers/software, please visit www.startech.com/downloads

Warranty Information

This product is backed by a five year warranty.

In addition, StarTech.com warrants its products against defects in materials and workmanship for the periods noted, following the initial date of purchase. During this period, the products may be returned for repair, or replacement with equivalent products at our discretion. The warranty covers parts and labor costs only. StarTech.com does not warrant its products from defects or damages arising from misuse, abuse, alteration, or normal wear and tear.

Limitation of Liability

In no event shall the liability of StarTech.com Ltd. and StarTech.com USA LLP (or their officers, directors, employees or agents) for any damages (whether direct or indirect, special, punitive, incidental, consequential, or otherwise), loss of profits, loss of business, or any pecuniary loss, arising out of or related to the use of the product exceed the actual price paid for the product. Some states do not allow the exclusion or limitation of incidental or consequential damages. If such laws apply, the limitations or exclusions contained in this statement may not apply to you.

Hard-to-find made easy. At StarTech.com, that isn't a slogan. It's a promise.

StarTech.com is your one-stop source for every connectivity part you need. From the latest technology to legacy products — and all the parts that bridge the old and new — we can help you find the parts that connect your solutions.

We make it easy to locate the parts, and we quickly deliver them wherever they need to go. Just talk to one of our tech advisors or visit our website. You'll be connected to the products you need in no time.

Visit www.startech.com for complete information on all StarTech.com products and to access exclusive resources and time-saving tools.

StarTech.com is an ISO 9001 Registered manufacturer of connectivity and technology parts. StarTech.com was founded in 1985 and has operations in the United States, Canada, the United Kingdom and Taiwan servicing a worldwide market.

Free Manuals Download Website

<http://myh66.com>

<http://usermanuals.us>

<http://www.somanuals.com>

<http://www.4manuals.cc>

<http://www.manual-lib.com>

<http://www.404manual.com>

<http://www.luxmanual.com>

<http://aubethermostatmanual.com>

Golf course search by state

<http://golfingnear.com>

Email search by domain

<http://emailbydomain.com>

Auto manuals search

<http://auto.somanuals.com>

TV manuals search

<http://tv.somanuals.com>