

Gas & Electric  
**Stoves**



Your Gazco stockist:	£3.00
<input type="text"/>	



## A warm welcome

Nothing creates an inviting atmosphere quite like a Gazco stove.

The centrepiece of any home, a Gazco stove adds warmth and character to a room or living space – even if you don't have a chimney!

Whether you want to achieve a minimalist, contemporary look, or have your heart set on a more traditional stove, this brochure will help you make the perfect choice, whatever your style or budget.

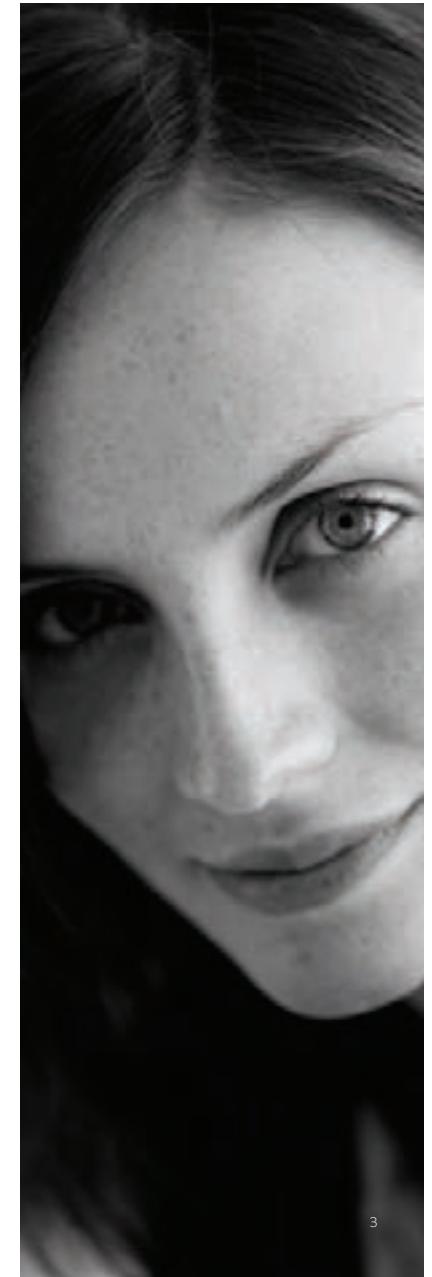
This season we have also introduced a new, stunningly realistic, electric log-effect range of stoves; opening up new possibilities such as conservatories, kitchens, dining rooms and bedrooms for you to have the warmth and character of a Gazco stove in your home.

Front Cover: Gas Huntingdon 30 in Matt Black

**GAZCO**  
The Future of Flame

## Contents

Relax – it's a Gazco stove	4
Flue and Fuel Types	6
<b>Traditional Styles</b>	
Gas and Electric Marlborough	8
Gas and Electric Stockton	12
Gas and Electric Huntingdon 30	18
Gas and Electric Clarendon	22
Gas and Electric Ashdon	26
Gas Brunel	32
Gas Regency	34
<b>Contemporary Styles</b>	
Gas Ceramica Manhattan	36
Gas and Electric Steel Manhattan	38
Gas F40 Avanti	42
Gas F67 Riva	44
Gas Riva Nemos	50
<b>Additional Information</b>	52
Technical information	57



## Relax – it's a Gazco stove

When you choose Gazco, quality and technology are assured. From traditional models to state-of-the-art designs, Gazco is committed to creating the ultimate flame-effect gas and electric stoves.

Our research and development laboratories are amongst the most advanced in the world, ensuring that the very latest innovations are incorporated into our appliances.

Gazco is a BSI registered firm. Our rigorous quality control systems ensure that all our appliances comply with British safety standards as well as stringent European regulations. We also carry the quality standard CE mark on all our gas and electric stoves.



# What's your type?

Before you select your stove, your local Gazco retailer will need to make sure it's suitable for your home. Firstly, you need to know what fuel you will be running. Secondly, you will need to be aware of what type of chimney or flue you have. If you do not have a chimney then don't worry, Gazco have models developed to suit your home too! To assist you in selecting the right stove for your home, a general guide to which models can be installed with the various flue types is given on each page.

## Fuel - Gas or Electric?

The majority of our stoves are available in either gas or electric versions. All the electric models run on a standard 13amp plug and have no need for a chimney.

## Which Gas type...

All Gazco gas stoves in this brochure can be specified for use with either Natural Gas or LPG. Natural Gas is provided through mains pipelines, whilst LPG is usually supplied to homes in rural areas from a tank in the garden or gas bottles.

## Your home...

The type of chimney or flue you have usually dictates your choice of stove. To help you understand which stoves are suitable for your home, please use the information and pictures shown opposite to identify your chimney. Don't worry, if you don't have a chimney though, you can still find the perfect stove for your home! Once you have identified your chimney (or confirmed you do not have one), take note of the symbol that represents this, as this will be used throughout the brochure to represent the stoves that are suitable for installation in your home.



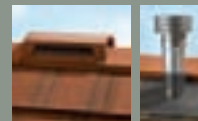
### Brick or Stone Chimney (Class 1) 1

Conventional chimneys are easily recognisable. The stack rises well above the roofline and is topped by a traditional chimney pot or gas terminal. This type of chimney relies on the natural circulation of heated air to expel the products of combustion up your chimney.



### Pre-Fabricated Flues (Class 1 & 2) 2

You will see a metal flue cowl on your roof. Some are all metal whilst others may terminate through a short rectangular pot (but without a chimney stack). These flues create the same circulation of heated air as a brick or stone chimney.



### Pre-Cast flues (Class 2) 3

Many modern homes have been built with such flues. You can readily identify them by either a metal flue cowl or a raised ridge terminal on your roof. Again, the natural circulation of heated air expels the products of combustion. This option is only available on the small stoves.



### Balanced Flue (No chimney required) BF

Balanced flues work in conjunction with glass fronted gas stoves. The appliance is completely sealed from the room into which it is installed (so there are no draughts and heating efficiency is increased!) and a twin-wall pipe vents directly to an outside wall. Air for combustion is drawn in through the outer pipe whilst the inner pipe removes the combustion gases to the exterior of the property. Dependent upon the stove selected, the twin-walled pipe may exit horizontally through an external wall or vertically through the roof. No electric supply is required; therefore there is no sound with this flue system.



### Powered Flue (No chimney required) PF

A powered flue uses an extractor unit mounted to vent the combustion gases directly outside. This means that your stove does not have to be installed against an external wall, so it can be located in more rooms around your home. A mains electricity supply is needed to operate this system.

## Electric Stoves (No chimney required) 4

Gazco produce an excellent selection of electric Marlborough, Stockton, Huntingdon 30, Clarendon, Ashdon and Steel Manhattan stoves which do not, of course, require a chimney or flue of any kind.

## No Air Vent required (UK) 5

All stoves shown with this symbol, boast the advantage of not normally requiring an air vent\*. Please discuss this in full with your local retailer.

\*Requirements in the Republic Of Ireland are different.

The above information is to assist in your choice of a suitable Gazco stove. This is not intended to be all the information required to install your stove. This can be obtained from your local Gazco retailer or you can download full installation instructions from the Gazco website at [www.gazco.com](http://www.gazco.com)



Medium Gas Marlborough with log-effect fire

## Gas Marlborough

Country or city, traditional or contemporary, the innovative Gas Marlborough has the flexibility to suit your lifestyle and your décor. It is available in three sizes and each has an extensive window area to allow you to enjoy the dancing flames and warm ambience of the coal or log effect fires to the full.

Operation is simplicity itself too. There's Piezo ignition and a manual control to adjust the flame height and heat output. Choose Gazco's Command upgradable remote control and you can adjust the flames and heat from your armchair. Alternatively, opt for the deluxe Programmable upgradable remote control to set the stove to switch itself on and off and heat the room to the temperature you select.



Large Gas Marlborough with coal-effect fire




Small Gas Marlborough with log-effect fire

### Colour Choice

Matt Black

### Heat Output

S: 1.95 - 3.60kW 

M: 2.50 - 5.15kW 

L: 3.10 - 7.28kW

### Efficiency

Conventional flue 78%

Balanced flue 82%

### Fuel Bed

Coals

Logs

### Command Controls

Manual

Standard upgradable

Programmable upgradable

### Suitable for

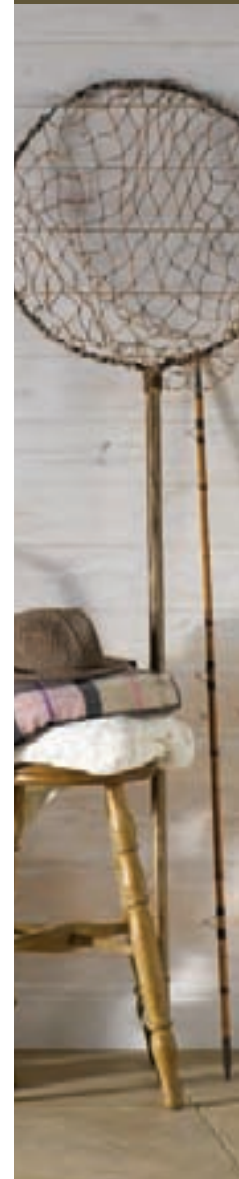
    

For complete model choices, specifications and additional information please see pages 52-56 and 58



10

Medium Electric Marlborough



## Electric Marlborough

Featuring the same distinctive styling as the Gas Marlborough, the two electric versions offer you an amazingly realistic log-effect fire at the touch of a switch. At its heart is Gazco's unique VeriFlame™ technology which allows you to choose from 5 different glow settings and 5 different flame speeds to match your mood exactly – and everything is operated from a remote control to save you bending. Furthermore, you can select fire effect only; fire effect + 1kw heat; and fire effect + 2kw heat according to your heating needs.

The Electric Marlborough simply plugs into a 13amp socket, so is particularly suited for conservatories or rooms without a chimney.





Small Electric Marlborough

### Colour Choice

Matt Black

### Heat Output

S: 1.00 - 2.00kW 

M: 1.00 - 2.00kW 

### Efficiency

99.8%

### Fuel Bed

Logs

### Command Controls

Remote as standard

### Suitable for

No chimney required

*For complete model choices, specifications and additional information please see pages 54-55 and 58*

11



Medium Gas Stockton with coal-effect fire



## Gas Stockton


Using cast iron for the door and heavy gauge steel for the body, Gas Stockton stoves combine simple, understated lines with Gazco's latest living flame technology.


This means you can enjoy an unrivalled coal or log effect fire together with a heating performance that will keep your room really cosy on those cold winter evenings. In fact, you won't even have to move from your chair if you opt for one of our remote controls!

### Colour Choice

Matt Black

### Heat Output

S: 1.95 - 3.60kW 

M: 2.50 - 5.15kW 

### Efficiency

Conventional flue 78%

Balanced flue 82%

### Fuel Bed

Coals

Logs

### Command Controls

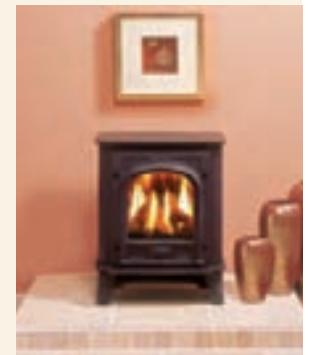
Manual

Standard upgradable

Programmable upgradable

### Suitable for



Small Gas Stockton with log-effect fire

For complete model choices, specification and additional information please see pages 52-56 and 58



## Gas Stockton 5

With authentic multi-fuel stove styling, right down to the hinged door with handle, the new Gas Stockton 5 is conveniently sized between the small and medium models featured on the previous page. So you have even more opportunity to suit your needs – and to enjoy all the enchantment of a real coal or log effect fire.

Choose from manual or remote controls.

### Colour Choice

Matt Black

### Heat Output

1.95 - 3.95kW 

### Efficiency

Conventional flue 78%  
Balanced flue 80%

### Fuel Bed

Coals  
Logs

### Command Controls

Manual  
Standard upgradable  
Programmable upgradable

### Suitable for

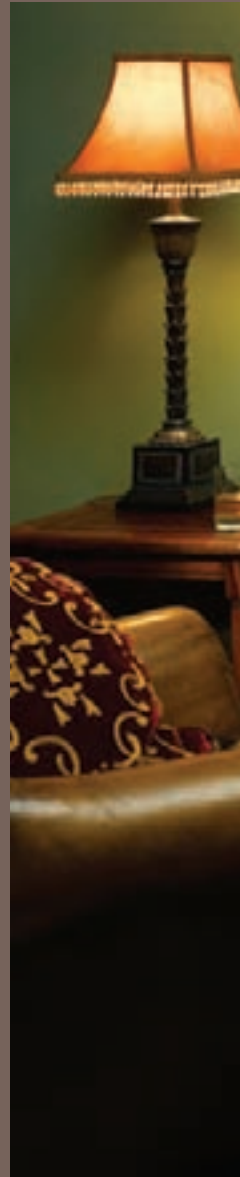
  

*\*Please note this is a viable installation in stone, but not suitable for combustible materials.*

*For complete model choices, specifications and additional information please see pages 52-56 and 58*



Gas Stockton 5 with log-effect fire



Gas Stockton 5\* with coal-effect fire







## Electric Stockton

Using the same cast iron door and heavy gauge steel body as the Gas Stocktons, the electric version combines the classic looks of a wood burning stove with the ease of Gazco's latest VeriFlame™ technology. This means you will enjoy up to 25 combinations of flame and glow from a remarkably authentic log-effect fire that creates a superb focal point for your room.

Choose from the Stockton 5 or slightly larger Medium Stockton.

**Colour Choice**  
Matt Black

**Heat Output**  
5: 1.00 - 2.00kW   
M: 1.00 - 2.00kW 

**Efficiency**  
99.8%

**Fuel Bed**  
Logs

**Command Controls**  
Remote as standard

**Suitable for**   
No chimney required

*For complete model choices, specifications and additional information please see pages 54-55 and 58*



Medium Electric Stockton in Matt Black



Electric Stockton 5 in Matt Black



Gas Huntingdon 30 in Matt Black with coal-effect fire

# Gas Huntingdon 30

A recent addition to the Gazco range, the Gas Huntingdon 30 successfully combines refined styling with efficient heating technology. This popular size of gas stove is also available in a choice of three high quality enamel colours as well as Matt Black. So there is a version of this authentic stove with beautiful tracery windows, that will fit right into your home.

Choose from manual or remote controls.

#### Colour Choice

Matt Black  
Laurel Green  
Midnight Blue  
Ivory

#### Heat Output

1.95 - 3.50kW 

#### Efficiency

Conventional flue 78%  
Balanced flue 80%

#### Fuel Bed

Coals  
Logs

#### Command Controls

Manual  
Standard upgradable  
Programmable upgradable

#### Suitable for



Gas Huntingdon 30 in Ivory enamel with log-effect fire



Gas Huntingdon 30 in Matt Black with log-effect fire

*For complete model choices, specifications and additional information please see pages 52-56 and 59*

# Electric Huntingdon 30



Electric Huntingdon 30 in Laurel Green enamel



Electric Huntingdon 30 in Ivory enamel

New this year is the electric version of the ever popular Huntingdon 30. The fine castings and beautiful tracery door of the stove are brought alive with Gazco's VeriFlame™ technology which provides you with a selection of 5 flame speeds and 5 glow levels. Your choice of fire is then set against the highly realistic fuel bed and individually hand painted 'logs', perfectly mirroring the look and atmosphere of a real woodburning stove.

Operation is simple too as the remote control not only allows selection of the flame and glow but also fire/heat combinations. These can be fire effect only only; fire effect + 1kw heat; and fire effect + 2kw heat according to the amount of warmth required.

#### Colour Choice

Matt Black  
Laurel Green  
Midnight Blue  
Ivory

#### Fuel Bed

Logs


#### Command Controls

Remote as standard

#### Suitable for

No chimney required

#### Heat Output

1.00 - 2.00kW 

#### Efficiency

99.8%

*For complete model choices, specifications and additional information please see pages 54-55 and 59*



Electric Huntingdon 30 in Matt Black

# Gas Clarendon

Superb heating efficiency, finely detailed castings, a real fire effect and choice of three sizes make the Gas Clarendon perfect for a wide variety of homes. Further, whilst the tracery of the standard window provides minimal obscuring of the flames, there are also 'clear glass' versions to attain the fullest possible view of the fire. The small and medium clear glass models are also available in two enamelled colours, Laurel Green and Midnight Blue.

According to size of model, the fires may be coal or log effect. All feature a fully adjustable flame and heat setting whether you opt for manual controls, the Standard remote control or the Programmable remote control. Select the Programmable remote control and you can even set the stove to switch itself on and off twice a day and thermostatically maintain the temperature in your room.



Small Gas Clarendon in Midnight Blue enamel with clear glass and log-effect fire



Medium Gas Clarendon in Midnight Blue enamel with clear glass and log-effect fire

## Colour Choice

Matt Black  
Laurel Green (S & M)  
Midnight Blue (S & M)

## Heat Output

S: 1.95 - 3.60kW  
M: 2.50 - 5.15kW  
L: 3.10 - 7.28kW

## Efficiency

Conventional flue 78%  
Balanced flue 82%

## Sizes Available

Small  
Medium  
Large

## Fuel Bed

Coals  
Logs

## Command Controls

Manual  
Standard upgradable  
Programmable upgradable

## Suitable for

1 2 BF PF

For complete model choices, specifications and additional information please see pages 52-56 and 60



Medium Gas Clarendon in Matt Black with log-effect fire



## Electric Clarendon

Authentic styling and elegant castings give the small and medium Clarendon all the character of a real stove but with the convenience of electricity. Simply plug in and switch on for Gazco's highly realistic log-effect fire, complete with your choice of different glows and flame speeds, as well as the soothing comfort of instant warmth.

The heater is discreetly located under the stove but, as all functions can be operated from the remote control, there is no stooping or crouching. In fact, you can alter the VeriFlame™ effect or adjust the heat output whilst relaxing in your favourite chair!



Medium Electric Clarendon in Matt Black



Small Electric Clarendon in Matt Black

### Colour Choice

Matt Black  
Laurel Green  
Midnight Blue

### Heat Output

1.00 - 2.00KW 

### Efficiency

99.8%

### Sizes Available

Small  
Medium

### Fuel Bed

Logs

### Command Controls

Remote as standard

### Suitable for

No chimney required

*For complete model choices, specifications and additional information please see pages 54-55 and 60*



Small Electric Clarendon in Matt Black



Gas Ashdon in Laurel Green enamel with coal-effect fire

## Gas Ashdon


Refinement and performance are very much the hallmarks of the Gas Ashdon. Its graceful lines and fine Gothic tracery window combined with the latest gas fire technology provide a superb focal point for your home.

There is a choice of traditional Matt Black, lustrous Midnight Blue, Laurel Green or Ivory enamel finishes; coals or logs; Standard upgradable and Programmable upgradable remote controls. In fact, all the features you would expect from this magnificent top-of-the-range stove.

### Colour Choice

Matt Black  
Laurel Green  
Midnight Blue  
Ivory

### Heat Output

2.50 - 5.15kW 

### Efficiency

Conventional flue 78%  
Balanced flue 82%

### Fuel Bed

Coals  
Logs

### Command Controls

Manual  
Standard upgradable  
Programmable upgradable

### Suitable for



Gas Ashdon in Ivory enamel with log-effect fire



Gas Ashdon in Midnight Blue enamel with coal-effect fire

For complete model choices, specifications and additional information please see pages 52-56 and 61



Gas Ashdon with clear door in Matt Black and log-effect fire

## Gas Ashdon Clear Door

For those who admire the fine lines and heating capacity of the Gas Ashdon, there is now the choice of a clear door version. Identical in performance and size to the Gas Ashdon, the clear door version is for those who crave the fullest possible flame picture without compromise.



Gas Ashdon with clear door in Laurel Green enamel and coal-effect fire

### Colour Choice

Matt Black  
Laurel Green  
Midnight Blue  
Ivory

### Heat Output

2.50 - 5.15kW

### Efficiency

Conventional flue 78%  
Balanced flue 82%

### Fuel Bed

Coals  
Logs

### Command Controls

Manual  
Standard upgradable  
Programmable upgradable

### Suitable for



*For complete model choices, specifications and additional information please see pages 52-56 and 61*



## Electric Ashdon

Gazco's most popular electric stove now features our new VeriFlame™ technology offering a stunningly realistic log-effect fire with up to 25 combinations of glow and flame speed. Quite simply, it means that you can enjoy all the ambience of a genuine cast iron wood burner with the convenience of a remote control.



Electric Ashdon in Laurel Green enamel

From the hand painted fuel bed and logs to the lustrous enamel finishes, this stove exudes the style and quality to make an impressive focal point in any room or conservatory.

### Colour Choice

Matt Black  
Laurel Green  
Midnight Blue  
Ivory

### Heat Output

1.00 - 2.00kW

### Efficiency

99.8%

### Fuel Bed

Logs

### Command Controls

Remote as standard

### Suitable for

No chimney required

*For complete model choices, specifications and additional information please see pages 54-55 and 61*



Electric Ashdon in Matt Black



## Gas Brunel

Ideal for the smaller room, this compact yet attractive cast iron stove can be mounted on an open hearth or fitted in front of a standard 22" (560mm) high fireplace opening. Whether you choose Matt Black, Midnight Blue enamel or Laurel Green enamel, there's a fully adjustable, authentic looking coal effect fire providing warmth and comfort on demand.

### Colour Choice

Matt Black  
Laurel Green  
Midnight Blue

### Heat Output

1.65 - 3.50kW 

### Efficiency

78%

*For complete model choices, specifications and additional information please see pages 52-56 and 62*

### Fuel Bed

Coals

### Command Controls

Manual

### Suitable for

**1 2 3**



Gas Brunel in Matt Black



Gas Brunel in Midnight Blue enamel, shown in Stovax Small Kensington mantel



34

Small Gas Regency with optional rail set



## Gas Regency

This traditional cast iron stove, originally patented by Benjamin Franklin in 1742, has been updated for the 21st Century with Gazco's impressively realistic open gas fire. In addition to being able to adjust the flame height and heat output, this model includes a variable flame control to allow you to select your preferred flame type – a gentle glow or flickering flames.

There are two sizes of Gas Regency. Each is supplied with a pair of brass ball finials but you can also add an optional set of brass rails if you wish, enhancing the classic styling still further.



Medium Gas Regency with optional rail-set



### Colour Choice

Matt Black

### Heat Output

S: 1.00 - 2.75kW

M: 1.30 - 3.25kW

### Fuel Bed

Coals

### Command Controls

Manual

### Suitable for

1

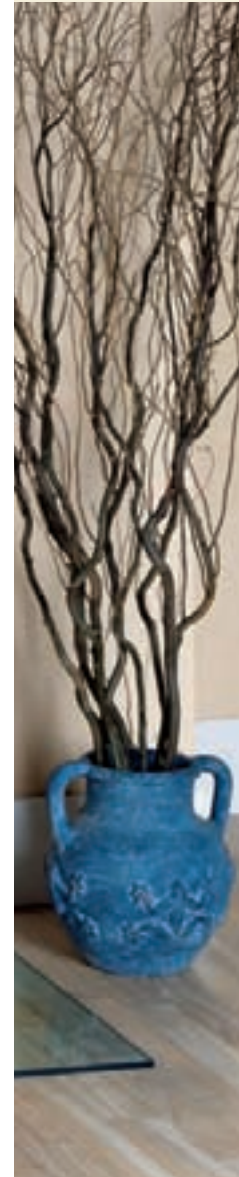
*For complete model choices, specifications and additional information please see pages 52-56 and 62*

35



36

Gas Ceramica Manhattan in Matt Beige with coal-effect fire



## Gas Ceramica Manhattan

With its superb contemporary styling and sturdy ceramic panelling, the Manhattan brings a colourful new dimension to home heating. At its centre is a finely detailed, cast iron frame surrounding a panoramic window that allows you to enjoy to the full a realistic picture of dancing flames and glowing coals or logs. To complete the look, a cast iron top grille permits warm, convected air to flow gently into the room.




Choose from manual or remote controls.

### Colour Choice

Matt Beige

### Heat Output

2.50 - 5.15kW 

### Efficiency

Conventional flue 78%  
Balanced flue 82%

### Fuel Bed

Coals  
Logs

### Command Controls

Manual  
Standard upgradable  
Programmable upgradable

### Suitable for

*For complete model choices, specifications and additional information please see pages 52-56 and 63*

37



## Gas Steel Manhattan



With similar styling to the Ceramica Manhattan, the steel versions offer you even more opportunities to co-ordinate with today's contemporary décors, room sizes and furnishings, especially as there are two sizes and each is available in a choice of two finishes.

Whichever way you look at the Steel Manhattan, as a piece of furniture or as a heating appliance, this precision-engineered gas stove provides an outstanding focal point for any room.

### Colour Choice

Anthracite  
Brushed Stainless Steel

### Heat Output

S: 1.95 - 3.65kW   
M: 2.50 - 5.15kW 

### Efficiency

Conventional flue 78%  
Balanced flue 82%

### Fuel Bed

Coals  
Logs

### Command Controls

Manual  
Standard upgradable  
Programmable upgradable

### Suitable for



Small Gas Steel Manhattan in Brushed Stainless Steel with coal-effect fire



Medium Gas Steel Manhattan in Anthracite with log-effect fire

*For complete model choices, specifications and additional information please see pages 52-56 and 63*



Small Electric Steel Manhattan in Anthracite



## Electric Steel Manhattan

Contemporary, convenient and comforting, the small and medium Electric Steel Manhattan provide clean lines, a highly realistic log-effect fire and up to 2kW of heat at the press of a button on the remote control.


Both versions incorporate Gazco's VeriFlame™ technology which offers you with a selection of 5 different flame speeds and 5 different glow levels together with a heater that is discreetly concealed beneath the stove. There is also a choice of modern finishes to blend with a wide range of interiors.

### Colour Choice

Anthracite  
Brushed Stainless Steel

### Heat Output

S: 1.00 - 2.00kW 

M: 1.00 - 2.00kW 

### Efficiency

99.8%

### Fuel Bed

Logs

### Command Controls

Remote as standard

### Suitable for

No chimney required

*For complete model choices, specifications and additional information please see pages 54-55 and 63*



Medium Electric Steel Manhattan in Brushed Stainless Steel, shown in Stovax Brompton mantel

# Gas F40 Avanti

Designed to provide a splendid focal point in contemporary styled interiors, the new Gas F40 Avanti is available in three distinctive versions – Avanti, Avanti Midi and Avanti Highline – to suit the widest range of requirements. Each features excellent views of Gazco's highly realistic coal or log fire through its large glass window.



Gas F40 Avanti Highline with coal-effect fire (conventional flue only)




Gas F40 Avanti with log-effect fire (balanced flue only), shown in Stovax Alborg mantel

#### Colour Choice

Iridium/Black

#### Heat Output

2.73 - 4.29kW 

#### Efficiency

Conventional flue 78%

Balanced flue 80%

#### Fuel Bed

Coals

Logs

#### Command Controls

Manual

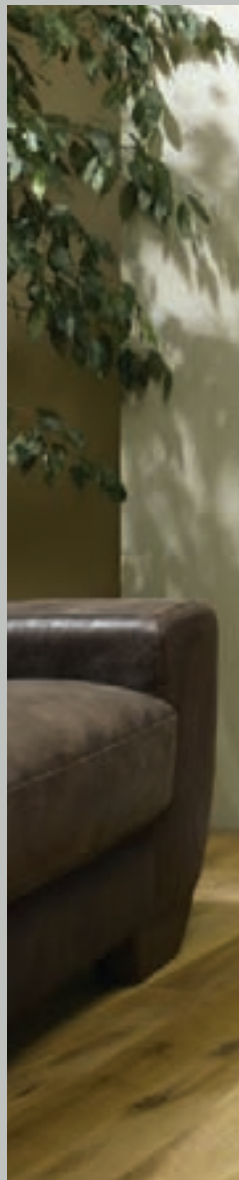
Standard upgradable

Programmable upgradable

#### Suitable for

*For complete model choices, specifications and additional information please see pages 52-56 and 64*



Gas F40 Avanti Midi with coal-effect fire (conventional flue only)



## Gas F67 Riva


If you need a high level of heating performance and efficiency but are seeking a look that is, perhaps, a little closer to a contemporary fire than a stove, then the F67 Riva offers an exceptionally stylish solution.

At the heart of the F67 Riva is a highly efficient, gas log fire. This not only provides a 'real fire' atmosphere, complete with comforting glow and flickering flames, but also up to 4.9kW of effective heating at the turn of a switch. Alternatively, opt for one of our Command remote controls and operation is easier still!

### Colour Choice

Black, with polished stainless steel inserts

### Heat Output

2.35 - 4.90kW 

### Efficiency

Conventional flue 72%  
Balanced flue 75%

### Fuel Bed

Logs

### Command Controls

Manual  
Standard upgradable  
Programmable upgradable

### Suitable for



Gas F67 Riva

*For complete model choices, specifications and additional information please see pages 52-56 and 64*

## Gas F67 Riva Bench



Gas F67 Riva Bench

As an alternative interior design option to the hearth-mounted F67 Riva, a 'Bench' version is also available. Raised off the hearth on a sturdily constructed and specially designed bench, the extra 350mm of height provides you with an excellent view of the fire through the generously wide window whilst the additional width creates a more striking focal point in your home.

For even more effect, choose Gazco's Command Programmable remote and you can set the fire to switch on/off when you want (so you can come home to a really cosy room) or simply adjust the flames and temperature from your favourite armchair!

### Colour Choice

Black, with polished stainless steel inserts

### Heat Output

2.35 - 4.90kW 

### Efficiency

Conventional flue 72%  
Balanced flue 75%

### Fuel Bed

Logs

### Command Controls

Manual  
Standard upgradable  
Programmable upgradable

### Suitable for

*For complete model choices, specifications and additional information please see pages 52-56 and 64*



Gas F67 Riva Bench

47



# Gas F67 Riva Pedestal



Gas F67 Riva Pedestal


Completing the F67 series is the Riva F67 Pedestal. This freestanding stove blends an elegant, 'wide screen' appearance with a highly realistic gas log fire to provide the ultimate centrepiece to any open living space. Alternatively, thanks to the tapered design at the rear, the F67 Pedestal may be installed into the corner of a room.

Just as importantly, there is up to 4.9kW of efficient, convected heat ready to warm your home whenever you wish.

#### Colour Choice

Black, with polished stainless steel inserts

#### Heat Output

2.35 - 4.90kW 

#### Efficiency

Conventional flue 72%  
Balanced flue 75%

#### Fuel Bed

Logs

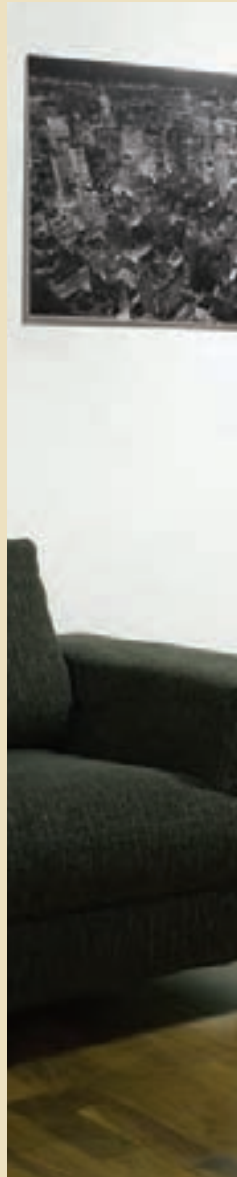
#### Command Controls

Manual  
Standard upgradable  
Programmable upgradable

#### Suitable for

*For complete model choices, specifications and additional information please see pages 52-56 and 64*



Gas F67 Riva Pedestal

49



## Gas Riva Nemos

Combining both pure lines and soft curves, the Riva Nemos has an allure that is immediate. However, its beauty is more than skin deep, because behind the glass window you will find a state-of-the-art gas fire featuring superbly sculpted driftwood logs and an exceptionally realistic flame pattern.

Furthermore, the Riva Nemos has been developed for highly efficient heating. Opt for the Programmable remote control and you can even wake up or come home to that cosy real fire atmosphere and a room temperature to suit your needs.

### Colour Choices

Iridium/Black  
Brushed Stainless/Black

### Heat Output

2.50 - 5.30kW 

### Efficiency

78%

### Fuel Bed

Driftwood

### Command Controls

Manual  
Standard upgradable  
Programmable upgradable

### Suitable for





Gas Riva Nemos in Brushed Stainless

*For complete model choices, specifications and additional information please see pages 52-56 and 65*

# Additional Information

## Impressive features

All Gazco gas stoves have an outstanding list of standard features:

- **Ceramic fibre coals, logs or driftwood** - skilfully sculpted for maximum 'real fire' effect and atmosphere
- **Multi-purpose control knobs** - for simple, fingertip control of ignition, pilot light and gas supply (except Gas F40 Avanti)
- **Piezo ignition** - automatic sparking without batteries or electricity (except Gas F40 Avanti)
- **Adjustable flame setting** - infinitely adjustable between high and low
- **Convection system** - for improved heating efficiency and safety
- **Flame failure device** - automatically shuts off the gas supply if the pilot light goes out
- **Flue Sure System®** - Gazco's special safety system shuts off the gas supply in the case of accidental flue blockage (conventional flue models only)
- **Choice of flue exit** - top or rear exit options for greater flexibility of installation (except Brunel and small balanced flue models which are rear exit only)

## Command remote controls for gas stoves

Gazco was the first UK company to introduce remote controls for gas fires. Today, our Command remote control systems allow most stoves to be upgraded, either at the time of purchase or at a later date, with either:



### a) Standard upgradable remote control

Once the pilot light has been ignited manually you can vary the flame height and heat output from the comfort of your armchair.



### b) Programmable upgradable remote control

This deluxe version has two additional features. The first allows you to thermostatically control the room temperature whilst the second allows you to programme your stove to switch itself on and off twice a day. Use both and you can even come home to a glowing fire that has heated the room to the temperature you select!

## Colour/finish choices

According to model, the colour/finishes available are shown below:



1 = Enamel finish 2 = Paint finish 3 = Steel finish 4 = Glaze Finish

## Electric Stoves

Our range of Electric Stoves are as easy to install as plugging in and switching on! Available in a range of designs from traditional to modern, ensuring that there is an electric stove available to suit all pockets and locations. The heater is discreetly located under the stove. Once set, all VeriFlame™ and heat controls are positioned at high level to save you crouching or stooping. They allow you to operate the stove on one of three heat outputs – VeriFlame™ fire effect only, VeriFlame™ fire effect + 1 kW heat and VeriFlame™ fire effect + 2 kW heat. Every VeriFlame™ setting beautifully highlights the highly realistic log-effect engine with a glass fibre fuel bed that is not only hand-painted for maximum aesthetic appeal but also includes separate, individually hand painted logs.

## The Gazco VeriFlame™ Difference

Unique on the market, Gazco's VeriFlame™ technology produces the ultimate in realistic fire effects. The complementary remote control allows you to independently adjust the speed of the flames and the fuel bed intensity and flame level on five different settings from low to high, to produce the exact ambience you require. Complete flexibility at the touch of a button. There are also discreetly concealed manual controls should the batteries in the remote control run out of power.

## Technical Specifications

All specifications given in the main part of this brochure are approximate. Actual specifications for each individual product will vary according to the exact model and are given on pages 53-62. Your Gazco retailer will be pleased to help explain specific model specifications and provide any further information you may require, or you can view/download specification sheets from [www.gazco.com](http://www.gazco.com)

## Installation

Gazco gas stoves must be fitted by a qualified gas installer (CORGI registered in the UK) who should also verify the proposed site conditions are fully suitable for the product selected. Complete installation instructions for many models can be obtained prior to purchase by downloading them from [www.gazco.com](http://www.gazco.com)

## Colours

Owing to variations in studio lighting and printing inks, the colours of stoves illustrated in this brochure may differ slightly from actual models.

In addition, the glaze used on the Ceramica Manhattan is fired on to the ceramic shell castings at very high temperatures. These castings sometimes have shading variations in the glaze finish and this does not constitute a fault, indeed, they add to the charm and individuality of every piece.

## Product improvement

Gazco's policy is one of constant product improvement. Appliances may therefore sometimes differ from the descriptions or illustrations in this brochure.

**Please note:** The operation and appearance of gas appliances depends on variable factors such as the gas pressure supplied.



# GAS & ELECTRIC STOVES - dimensions and options

Model	Overall dimensions (mm)			Approx weight (kg)	Conventional or Pre-fabricated flue
	W	H	D		
<b>Gas Marlborough</b> - Matt Black only					
Small	410	533	360	35	✓
Medium	590	583	410	48	✓
Large	730	628	420	56	✓
<b>Gas Stockton</b> - Matt Black only					
Small	422	525	340	57	✓
Stockton 5	481	544	337	55	✓
Medium	579	618	411	77	✓
<b>Gas Huntingdon 30</b> - Matt Black, Laurel Green, Midnight Blue and Ivory					
	560	592	351	72	✓
<b>Gas Clarendon</b> - Matt Black but also Laurel Green and Midnight Blue on S & M Clear Glass models					
Small	431	589	342	56	✓
Medium	654	652	427	86	✓
Large	779	710	468	102	✓
Small - clear glass	431	589	342	54	✓
Medium - clear glass	654	652	427	84	✓
Large - clear glass	779	710	468	99	✓
<b>Gas Ashdon</b> - Matt Black, Laurel Green, Midnight Blue and Ivory					
Medium	654	652	515	88	✓
Medium - clear glass	654	652	515	86	✓
<b>Gas Brunel</b> - Matt Black, Laurel Green and Midnight Blue					
	412	524	414	49	✓*
<b>Gas Regency</b> - Matt Black only					
Small	850	910	600	125	✓
Medium	950	940	660	142	✓
<b>Gas Ceramica Manhattan</b> - Matt Beige only					
	711	720	427	110	✓
<b>Gas Steel Manhattan</b> - Anthracite and Brushed Stainless Steel					
Small	540	635	360	64	-
Medium	711	700	427	80	✓
<b>Gas Riva Nemos</b> - Iridium/Black Brushed Stainless Steel/Black					
	694	1148	424	122	-
<b>Gas F40 Avanti</b> - Iridium/Black only					
Avanti	462	644	331	45	✓
Midi	462	824	331	55	✓
Highline	462	999	331	65	✓
<b>Gas Riva F67</b> - Black, with polished steel only					
Riva F67	880	592	420	58	-
Riva F67 Bench	1200	942	420	102	-
Riva F67 Pedestal	880	843	420	98	-
<b>Electric Marlborough</b> - Matt Black only					
Small	410	559	360	35	-
Medium	590	583	410	48	-
<b>Electric Stockton</b> - Matt Black only					
Stockton 5	481	544	337	55	-
Medium	579	618	411	82	-
<b>Electric Huntingdon 30</b> - Matt Black, Laurel Green, Midnight Blue and Ivory					
	560	592	351	71.5	-
<b>Electric Clarendon</b> - Matt Black, Laurel Green and Midnight Blue					
Small	431	589	342	56	-
Medium	654	652	427	78	-
<b>Electric Ashdon</b> - Matt Black, Laurel Green, Midnight Blue and Ivory					
	654	652	515	78	-
<b>Electric Steel Manhattan</b> - Anthracite and Brushed Stainless Steel					
Small	540	635	360	33	-
Medium	711	700	427	44	-

**Important Notes:**

1. **Conventional Flue Pipe and options:** for flue pipe codes and options such as flue collars, closure plates and spigot extensions, please see price list.

2. **Balanced Flue:** in addition, please order appropriate flue kit and optional flue collar. Please see price list for details.

3. **Powered Flue:** please order powered flue kit and, if terminal is to be less than 2m above ground level, a terminal guard is also required.

4. \*: indicates product is available with rear flue exit only. All other products top or rear.

5. †: Top flue only.

Coal fire		Log fire					
Pre-cast flue	Powered flue	Conventional or Pre-fabricated	Pre-cast flue	Balanced flue	Powered flue	Electric No flue req.	
✓	✓	-	-	✓*	-	-	
-	✓	✓	-	✓	-	-	
-	✓	-	-	-	-	-	
✓	✓	-	-	✓*	-	-	
-	-	-	-	✓	-	-	
-	✓	✓	-	✓	-	-	
-	-	-	-	✓	-	-	
-	-	✓	-	✓	-	-	
-	✓	✓	-	✓	-	-	
✓*	-	-	-	-	-	-	
-	-	-	-	-	-	-	
-	-	-	-	-	-	-	
-	✓	✓	-	✓	-	-	
-	✓	✓	-	✓	-	-	
-	-	-	-	✓†	-	-	
-	-	-	-	✓	-	-	
-	-	-	-	✓	-	-	
-	-	✓†	-	✓†	-	-	
-	-	✓†	-	✓†	-	-	
-	-	-	-	-	-	✓	
-	-	-	-	-	-	✓	
-	-	-	-	-	-	✓	
-	-	-	-	-	-	✓	
-	-	-	-	-	-	✓	
-	-	-	-	-	-	✓	
-	-	-	-	-	-	✓	
-	-	-	-	-	-	✓	
-	-	-	-	-	-	✓	
-	-	-	-	-	-	✓	
-	-	-	-	-	-	✓	
-	-	-	-	-	-	✓	
-	-	-	-	-	-	✓	
-	-	-	-	-	-	✓	
-	-	-	-	-	-	✓	

# Gas Flue Systems

## 1. Closure Plate and Spigot Extension†

This is a flue system suitable for homes with existing conventional chimneys in which an airtight, steel closure plate is fitted over a fireplace opening or Class 2 pre-cast starter block and a short piece of flue extends from the back of the stove, through the plate, into the chimney. The products of combustion are carried up the chimney by natural convection.

**Models which can be fitted with a closure plate and spigot extension are:**

Small Gas Marlborough, Small Gas Stockton, Medium Gas Marlborough and Gas Brunel.

**Models which can be fitted to a pre-cast chimney with a closure plate are:**

Small Gas Marlborough, Small Gas Stockton and Gas Brunel.



## 2. Rigid or Flexible Metal Flue†

With this flue system rigid metal tubes, or a combination of rigid and flexible metal tubes, extend vertically directly from the stove to the outside of the property. This may be either straight through the ceiling or roof with the flue pipe exposed, or by using the channel of a chimney or a studwork enclosure. The products of combustion are carried up the flue by natural convection.

**Models which can use this system are:**

Small, Medium and Large Gas Marlborough, Small and Medium Gas Stockton, Gas Stockton 5, Huntingdon 30, Small, Medium and Large Gas Clarendon and clear glass, Gas Ashdon and clear glass, Gas Brunel, Ceramica Manhattan, Small and Medium Steel Manhattan, Gas F40 Avanti, Midi and Highline, Gas F67 Riva, Gas F67 Riva Bench, Gas F67 Riva Pedestal. Also Small and Medium Gas Regency with 7" minimum flue.



## 3. Balanced Flue

Where a room has no chimney, then a Balanced Flue version of a Gazco stove is a practical option. The flue consists of one tube inside another. The outer tube brings air into the stove for combustion whilst the inner one emits the products of combustion.

Options: A - Rear outlet (max 600mm wall thickness).

B - Top outlet/up and out (min rise 500mm, max 3m), horizontal (min 500mm, max 5m).

An additional bend can be incorporated in to the horizontal section of the 'up and out', dependent upon a 1m min vertical rise.

C - Top outlet/vertical (min 3m, max 10m).

D - Top outlet/vertical with offset (min to first bend 500mm, max flue length 10m).

Ask dealer for full technical details and installation requirements. A 4-page information sheet is available.

**Models which can use this system are:**

Small\* and Medium Gas Marlborough, Small\* and Medium Gas Stockton, Gas Stockton 5, Gas Huntingdon 30, Gas F40 Avanti, Midi and Highline, Gas F67 Riva†, Gas F67 Riva Bench†, Gas F67 Riva Pedestal†, Small\* and Medium Gas Clarendon and Clear Glass, Gas Ashdon and clear glass, Ceramica Manhattan, Small\* and Medium Steel Manhattan and Gas Riva Nemos†. (\*Rear outlet only † Top outlet only)

All Balanced Flue models are log effect only.



## 4. Powered Flue

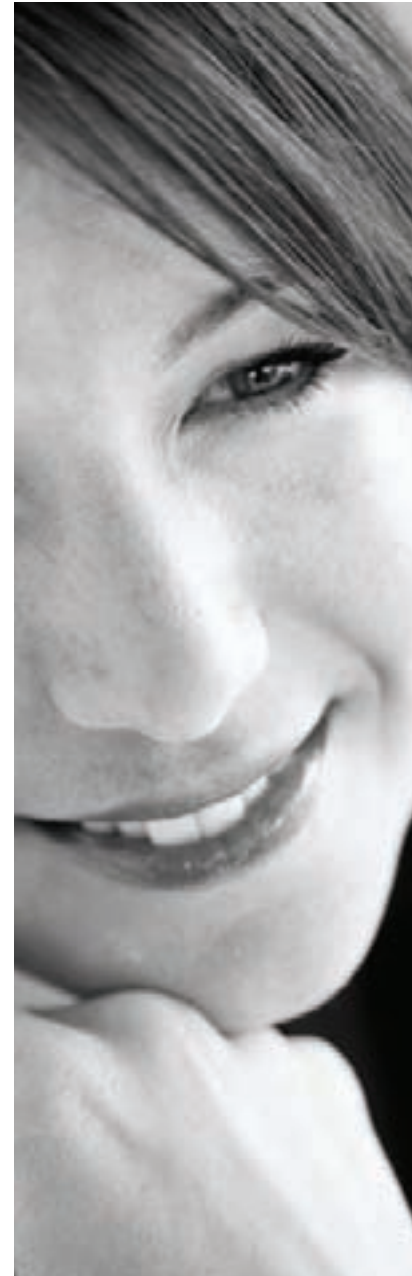
Where a room has no chimney then a Powered Flue is the answer. It is a special extractor unit which attaches to an outside wall and removes the products of combustion, along a rigid metal pipe by fan action. Generally the flue pipe can be of longer lengths than with a Balanced Flue and can also include a number of 90° bends.

**Models which can use this system are:**

Small, Medium and Large Gas Marlborough, Small and Medium Gas Stockton, Small, Medium and Large Gas Clarendon and clear glass, Gas Ashdon and clear glass, Ceramica Manhattan and Medium Steel Manhattan.

Use Powered Flue with coal effect only.

†Due to the high efficiency and the limited flue flow of the closed convector stoves, a 5" (125mm) flexible flue liner is required when installing the stoves into a brick chimney or a larger than 5" (125mm) diameter lined flue. The only exception to this is stoves that are listed as suitable for installation with a Gazco closure plate and spigot over a standard 22"x16" fire opening.



# Technical Information

The following pages provide much of the dimensional, heat input/output, efficiency and product code information you will need to choose your new Gazco Stove. For more detailed specifications, please consult your Gazco retailer. Alternatively, complete installation instructions may be downloaded from [www.gazco.com](http://www.gazco.com).

# Contents

## Traditional Stoves

Gas and Electric Marlborough	58
Gas and Electric Stockton	58
Gas and Electric Huntingdon 30	59
Gas and Electric Clarendon	60
Gas and Electric Ashdon	61
Gas Brunel	62
Gas Regency	62

## Contemporary Stoves

Gas Ceramica Manhattan	63
Gas and Electric Steel Manhattan	63
Gas F40 Avanti	64
Gas F67 Riva	64
Gas F67 Riva Bench	64
Gas F67 Riva Pedestal	64
Gas Riva Nemos	65
Components for balanced flue Gas models	66







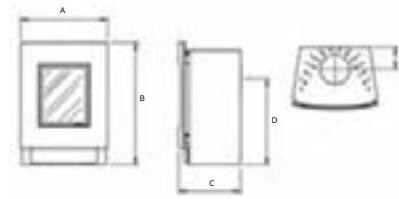


## Gas F40 Avanti

Product Code	Model	Flue Type	Logs/ Coals	Fuel Type	Heat Input	Heat Output	Efficiency
⊗ <b>8685MCUC</b>	Avanti	Conventional	Coals	Nat Gas	5.45kW	4.25kW	78%
⊗ <b>8685MMCUC</b>	Midi	Conventional	Coals	Nat Gas	5.45kW	4.25kW	78%
⊗ <b>8685HMUC</b>	Highline	Conventional	Coals	Nat Gas	5.45kW	4.25kW	78%
⊗ <b>8686LUC</b>	Avanti	Balanced Flue	Logs	Nat Gas	5.00kW	4.00kW	80%
⊗ <b>8686MLUC</b>	Midi	Balanced Flue	Logs	Nat Gas	5.00kW	4.00kW	80%
⊗ <b>8686HLUC</b>	Highline	Balanced Flue	Logs	Nat Gas	5.00kW	4.00kW	80%
⊗ <b>P8685MCUC</b>	Avanti	Conventional	Coals	LPG	5.50kW	4.29kW	78%
⊗ <b>P8685MMCUC</b>	Midi	Conventional	Coals	LPG	5.50kW	4.29kW	78%
⊗ <b>P8685HMUC</b>	Highline	Conventional	Coals	LPG	5.50kW	4.29kW	78%
⊗ <b>P8686LUC</b>	Avanti	Balanced Flue	Logs	LPG	4.60kW	3.68kW	80%
⊗ <b>P8686MLUC</b>	Midi	Balanced Flue	Logs	LPG	4.60kW	3.68kW	80%
⊗ <b>P8686HLUC</b>	Highline	Balanced Flue	Logs	LPG	4.60kW	3.68kW	80%

Gas F40 Avanti Dimensions (see letters on diagram)

	A		B		C		D		E	
	ins	mm	ins	mm	ins	mm	ins	mm	ins	mm
<b>AVANTI</b>	18½	462	25½	644	13	331	17¼	453	4¼	119
<b>MEDIUM</b>	18½	462	32½	824	13	331	25	633	4¼	119
<b>HIGHLINE</b>	18½	462	39½	999	13	331	31¼	808	4¼	119



Recommended clearances between stove and other surfaces: top 9" (225mm), sides 6" (150mm), rear 2" (50mm).  
\* (Balanced flue 6½" 165mm).

### Matt Black stove pipe

Balanced flue versions of the Gas F40 Avanti must only use the 6" stainless steel flue provided. For additional Matt Black, Midnight Blue, Laurel Green and Ivory enamelled flue collars, please see the Gazco Stoves price list. Gazco recommends the use of 5" matt black enamelled stove pipe with the conventional flue version F40 Avanti stove. The components usually required are:

Description	Product Code
1" Straight pipe	<b>4500</b>
2" Straight pipe	<b>4501</b>
3" Straight pipe	<b>4502</b>
90° Long 'elbow' adaptor (9" projection)	<b>4514</b>
Flue collar	<b>8549</b>

## Riva Nemos

Product Code	Steel Finish	Fuel Effect	Fuel Type	Heat Input	Heat Output	Efficiency
⊗ <b>8627IR</b>	Iridium	Driftwood	Nat.Gas	6.80kW	5.30kW	78%
⊗ <b>8627BS</b>	Brushed Stainless	Driftwood	Nat.Gas	6.80kW	5.30kW	78%
⊗ <b>P8627IR</b>	Iridium	Driftwood	LPG	6.30kW	4.90kW	78%
⊗ <b>P8627BS</b>	Brushed Stainless	Driftwood	LPG	6.30kW	4.90kW	78%

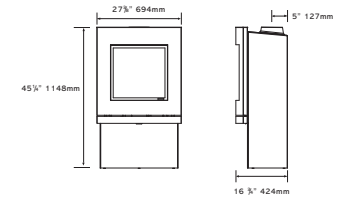
Recommended clearances between stove and other surfaces: top 8" (200mm), sides 2" (50mm), rear 2" (50mm). The Riva Nemos has a top flue exit only.

### Anthracite and Stainless Steel flue pipe

For details of kits and components, please see page 62.

### Matt Black stove pipe

Balanced flue Gas Riva Nemos must only use the 6" stainless steel flue provided.



## Gas Riva F67

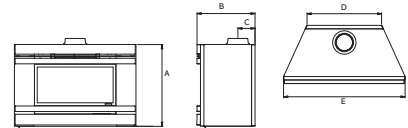
Product Code	Model	Flue Type	Logs/ Coals	Fuel Type	Heat Input	Heat Output	Efficiency
⊗ <b>8742CFLUC</b>	F67	Con. Flue	Logs	Nat Gas	6.80kW	4.90kW	72%
⊗ <b>8742BFLUC</b>	F67	Bal. Flue	Logs	Nat Gas	6.10kW	4.60kW	75%
<b>8732</b>	Bench to be ordered with F67 Riva, to make Riva F67 Bench						
⊗ <b>8741CFLUC</b>	F67 Pedestal	Con. Flue	Logs	Nat Gas	6.80kW	4.90kW	72%
⊗ <b>8741BFLUC</b>	F67 Pedestal	Bal. Flue	Logs	Nat Gas	6.10kW	4.60kW	75%
⊗ <b>P8742BFLUC</b>	F67	Bal. Flue	Logs	LPG	6.70kW	4.80kW	72%
⊗ <b>P8742CFLUC</b>	F67	Con. Flue	Logs	LPG	5.80kW	4.40kW	75%
<b>8732</b>	Bench to be ordered with F67 Riva, to make Riva F67 Bench						
⊗ <b>P8741CFLUC</b>	F67 Pedestal	Con. Flue	Logs	LPG	6.70kW	4.80kW	72%
⊗ <b>P8741BFLUC</b>	F67 Pedestal	Bal. Flue	Logs	LPG	5.80kW	4.40kW	75%

Gas F67 Riva Dimensions (see letters on diagram)

	A		B		C		D		E	
	ins	mm	ins	mm	ins	mm	ins	mm	ins	mm
<b>F67 Riva Conventional Flue</b>	23¼	592	16¼	420	4¼	124	21¼	540	3¼	880
<b>F67 Riva Balanced Flue</b>	23¼	592	16¼	420	5¼	149	21¼	540	3¼	880
<b>F67 Riva Pedestal Conventional Flue</b>	33¼	843	16¼	420	4¼	124	21¼	540	3¼	880
<b>F67 Riva Pedestal Balanced Flue</b>	33¼	843	16¼	420	5¼	149	21¼	540	3¼	880
<b>F67 Riva Bench Conventional Flue*</b>	37	942	16¼	420	4¼	124	21¼	540	39¼	1000
<b>F67 Riva Bench Balanced Flue*</b>	37	942	16¼	420	5¼	149	21¼	540	39¼	1000

\*Bench itself is 1200 x 350 x 420mm (w x h x d)

The above information is to assist in your choice of a suitable Gazco stove. This is not intended to be all the information required to install your stove. This can be obtained from your local Gazco retailer or you can download the full installation instructions from the Gazco website at [www.gazco.com](http://www.gazco.com)



Recommended clearances between stove and other surfaces: top 9" (225mm), sides 6" (150mm), rear 2" (50mm).  
The Gas F67 Riva has a top flue exit only.

### Matt Black stove pipe

Balanced flue versions of the Gas Riva F67 must only use the 6" stainless steel flue provided. For additional Matt Black, Midnight Blue, Laurel Green and Ivory enamelled flue collars, please see the Gazco Stoves price list. Gazco recommends the use of 5" matt black enamelled stove pipe with the conventional flue version Riva F67 stove. The components usually required are:

Description	Product Code
1" Straight pipe	<b>4500</b>
2" Straight pipe	<b>4501</b>
3" Straight pipe	<b>4502</b>
90° Long 'elbow' adaptor (9" projection)	<b>4514</b>
Flue collar	<b>8549</b>

The above information is to assist in your choice of a suitable Gazco stove. This is not intended to be all the information required to install your stove. This can be obtained from your local Gazco retailer or you can download the full installation instructions from the Gazco website at [www.gazco.com](http://www.gazco.com)

## Components for balanced flue models

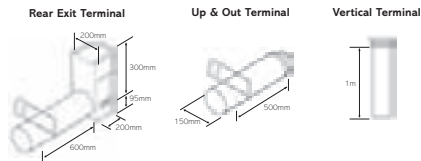
Basic Stainless Steel Kits	Product Code
Rear exit, horizontal - complete with terminal guard	<b>8526</b>
Top exit, up & out, stoves	<b>8523</b>
Top exit, up & out, Nemos & F67	<b>8534</b>
Top exit, vertical	<b>8524</b>
45° offset bend (set of two) for use with <b>8524</b>	<b>8530</b>

Basic Anthracite Steel Kits	Product Code
Top exit, up & out, stoves	<b>8523AN</b>
Top exit, up & out, Nemos & F67	<b>8534AN</b>
Top exit, vertical	<b>8524AN</b>
45° offset bend (set of two) for use with <b>8524AN</b>	<b>8530AN</b>

Additional Stainless Steel components for top exit (as required)	Product Code
200mm straight (effective length 140mm)	<b>8527</b>
500mm straight (effective length 440mm)	<b>8528</b>
1000mm straight (effective length 940mm)	<b>8529</b>
45° bend	<b>8507</b>
90° bend	<b>8508</b>

Additional Anthracite Steel components for top exit (as required)	Product Code
200mm straight (effective length 140mm)	<b>8527AN</b>
500mm straight (effective length 440mm)	<b>8528AN</b>
1000mm straight (effective length 940mm)	<b>8529AN</b>
45° bend	<b>8507AN</b>
90° bend	<b>8508AN</b>

Additional Steel components for top exit	Product Code
Flue collar, Matt Black	<b>8548</b>
Flue collar, Midnight Blue	<b>8548MB</b>
Flue collar, Laurel Green	<b>8548LG</b>
Flue collar, Ivory	<b>8548IV</b>



## Other products offered by the Gazco family that may be of interest to you include:



### Gazco Fires

[www.gazco.com](http://www.gazco.com)

Featuring hundreds of different fire and surround permutations, this brochure really does feature a fire for every home. Offering the wonderful ambience of a real fire-effect with superb efficiency, these built-in appliances give you the choice of gas or electric to heat your home.



### Redfyre Range Cookers

[www.redfyrecookers.co.uk](http://www.redfyrecookers.co.uk)

Handcrafted by skilled artisans, Redfyre's leading collection of range cookers built upon their heritage dating back to 1931. A multitude of versions and options are available including the Traditional, Central Heating or Universal – combining the heat store efficiencies with the utmost of modern usability. All versions are available in a choice of 6 beautifully enamelled colours and options include a choice of gas, oil or electric; 2 or 4 ovens; round or square hobplate covers; gas, electric or induction hobs; the ability to run up to 24 radiators and provide domestic hot water.



### Godin Cookers

[www.godincookers.co.uk](http://www.godincookers.co.uk)

Godin cookers and stoves have been manufactured in France since 1840. Now available in the UK and Republic of Ireland through Redfyre range cookers is the Godin cookers family of the Souveraine, Châtelaine and Exclusive cookers. Godin cookers have a reputation as leader in the development of heating and cooking products and artfully blend tradition with innovation to provide the ultimate kitchen accoutrements. Individually handmade to the highest standards, these professional quality appliances are the cookers of choice for many Michelin chefs.



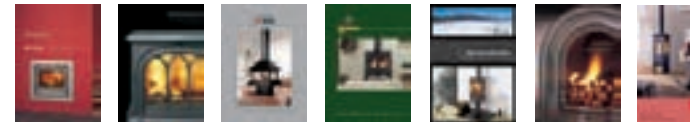
### Wamsler Cookers & Stoves

[www.wamslercookers.co.uk](http://www.wamslercookers.co.uk)

Wamsler products, synonymous with the manufacture of solid fuel cookers and heating products, are now available in the UK and Republic of Ireland through Redfyre range cookers. Featuring a wide choice of solid fuel cookers, central heating cookers and multi-fuel stoves that are particularly suited to British & Irish homes, Wamsler offer a viable ecological way to heat your home and cook.

To receive a copy of the Gas Fires brochure, please call 01392 474061. For a copy of Redfyre, Godin or Wamsler brochures please call 01392 474079. Alternatively, details on all the full range of products and brochure PDF's can be found at all the websites as detailed above.

Gazco is a member of the Stovax Group which manufactures and distributes many other high quality fireplace products:



The above information is to assist in your choice of a suitable Gazco stove. This is not intended to be all the information required to install your stove. This can be obtained from your local Gazco retailer or you can download the full installation instructions from the Gazco website at [www.gazco.com](http://www.gazco.com)

Gazco gratefully acknowledges the assistance of the following companies with photographic settings:

**Furnishings and Ornaments:-** [www.furniturevillage.co.uk](http://www.furniturevillage.co.uk); [www.debenhams.com](http://www.debenhams.com); [www.electique.co.uk](http://www.electique.co.uk); [www.theorangeatree.co.uk](http://www.theorangeatree.co.uk); [www.houseoffraser.co.uk](http://www.houseoffraser.co.uk); [www.lauraashley.com](http://www.lauraashley.com); [www.faginsantiques.com](http://www.faginsantiques.com); [www.habitat.co.uk](http://www.habitat.co.uk); [www.stbridgetnurseseries.co.uk](http://www.stbridgetnurseseries.co.uk); [www.ashorejewellery.co.uk](http://www.ashorejewellery.co.uk)

**Wood Mantels:-** [www.stovax.com](http://www.stovax.com) **Stone Mantels:-** [www.rudloe-stone.com](http://www.rudloe-stone.com); [www.farmington.co.uk](http://www.farmington.co.uk); [www.bnsp.co.uk](http://www.bnsp.co.uk) **Paintings:-** [www.easycart.com](http://www.easycart.com)

**Wood Flooring:-** [www.beachbros.co.uk](http://www.beachbros.co.uk) **Stone Floors:-** [www.originalstyle.com](http://www.originalstyle.com) **Televisions:-** [www.heavtreeradio.co.uk](http://www.heavtreeradio.co.uk)

## Free Manuals Download Website

<http://myh66.com>

<http://usermanuals.us>

<http://www.somanuals.com>

<http://www.4manuals.cc>

<http://www.manual-lib.com>

<http://www.404manual.com>

<http://www.luxmanual.com>

<http://aubethermostatmanual.com>

Golf course search by state

<http://golfingnear.com>

Email search by domain

<http://emailbydomain.com>

Auto manuals search

<http://auto.somanuals.com>

TV manuals search

<http://tv.somanuals.com>