



## 8 Channel H.264 Smart DVR Security System

w/ Coaching iMenu and 8 Hi-Res Indoor/Outdoor Night Vision Surveillance Cameras

COMPLETE SYSTEM

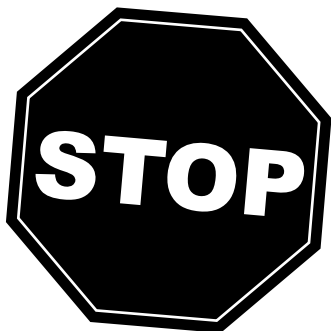


# INSTRUCTION MANUAL



[www.SVAT.com](http://www.SVAT.com)

Model#:  
**CV301-8CH**  
[www.SVAT.com](http://www.SVAT.com)



**NEED  
HELP?**

**DO NOT RETURN THIS  
PRODUCT TO THE STORE**

Please contact a SVAT customer support representative first regarding any additional information on product features, specifications or assistance with setup.

Please contact us via one of the methods below:



Email:  
**support@SVAT.com**

Online live web chat:  
**Visit [www.SVAT.com](http://www.SVAT.com)**



Toll free telephone:  
**1.866.946.7828**

Toll free fax:  
**1.888.771.1701**

For more product information visit **[www.SVAT.com](http://www.SVAT.com)**

Note: This is manual version 1.0 for this product, you may find updated versions by visiting our website.

## PRODUCT WARRANTY INFORMATION

Please visit our website at [www.SVAT.com](http://www.SVAT.com)  
for information about your product's warranty.

We take quality very seriously. That is why all of our products come with a one year warranty from the original purchase date against defects in workmanship and materials. If you have warranty or support issues please contact us using any of the following methods:

**Phone:** 1.866.946.7828  
**Fax:** 1.888.771.1701  
**Email:** [support@SVAT.com](mailto:support@SVAT.com)  
**Website:** [www.SVAT.com](http://www.SVAT.com)

**SVAT USA**  
60 Industrial Parkway #Z64  
Cheektowaga, NY  
USA 14227

**SVAT CANADA**  
4080 Montrose Road  
Niagara Falls, ON  
Canada L2H 1J9

### Warranty Terms

1. SVAT products are guaranteed for a period of one year from the date of purchase against defects in workmanship and materials. This warranty is limited to the repair, replacement or refund of the purchase price at SVAT's option.
2. This warranty becomes void if the product shows evidence of having been misused, mishandled or tampered with contrary to the applicable instruction manual.
3. Routine cleaning, normal cosmetic and mechanical wear and tear are not covered under the terms of this warranty.
4. The warranty expressly provided for herein is the sole warranty provided in connection with the product itself and no other warranty, expressed or implied is provided. SVAT assumes no responsibilities for any other claims not specifically mentioned in this warranty.
5. This warranty does not cover shipping costs, insurance, or any other incidental charges.
6. You **MUST** call SVAT before sending any product back for repair. You will be sent a Return Authorization number with return instructions. When returning the product for warranty service, please pack it carefully in the original box with all supplied accessories, and enclose your original receipt or copy, and a brief explanation of the problem (include RA #).
7. This warranty is valid only in Canada and the continental U.S.
8. This warranty cannot be re-issued.



### CAUTION

RISK OF ELECTRIC SHOCK, DO NOT OPEN MONITOR



TO REDUCE THE RISK OF ELECTRIC SHOCK, DO NOT REMOVE THE COVER (BACK).  
NO USER SERVICEABLE PARTS INSIDE. REFER SERVICING TO QUALIFIED SERVICE PERSONNEL.

<b>TABLE OF CONTENTS</b> .....	<b>1</b>
<b>INTRODUCTION</b> .....	<b>3</b>
<b>WHAT IS INCLUDED</b> .....	<b>3</b>
<b>FEATURES</b> .....	<b>4</b>
<b>OPTIONAL ACCESSORIES</b> .....	<b>5</b>
<b>BUTTONS AND CONNECTIONS</b> .....	<b>6</b>
<b>BASIC SETUP</b> .....	<b>8</b>
Things to Consider Before Installation .....	8
Mounting the Cameras .....	8
Wiring Diagram for Cameras.....	9
<b>CONNECTING ADDITIONAL DEVICES</b> .....	<b>9</b>
Connecting a USB Mouse .....	9
Connecting a Monitor .....	10
Connecting a PTZ Camera .....	10
<b>POWERING ON DVR</b> .....	<b>10</b>
<b>GETTING STARTED</b> .....	<b>11</b>
Using the Mouse.....	11
Viewing Your Cameras .....	11
<b>FUNCTION MENU</b> .....	<b>12</b>
Function Menu Options .....	12
<b>MAIN MENU</b> .....	<b>15</b>
Using the Keyboard .....	16
Camera Setup .....	17
Record Setup .....	19
Network Setup Menu.....	21
Video Search.....	25
Devices .....	27
HDD .....	28
Alarm Setup.....	30
PTZ Setup .....	32
Motion Detection.....	33
Mobile Setup .....	34
System Setup.....	35
Date and Time.....	35
Password Setup .....	38
Video Setup .....	39
Language .....	40
System Information .....	40
Maintenance.....	41
<b>PLAYBACK</b> .....	<b>42</b>
Video Search.....	42

File List .....	43
Playback through DVR .....	44
Computer Playback.....	45
File Viewing.....	46
Software Functions .....	47
Bottom Playback Functions.....	48
Setting Menu .....	49
<b>NETWORK GUIDE .....</b>	<b>51</b>
Requirements .....	51
Connecting DVR to a Router.....	51
Finding your DVR's IP address .....	52
Preparing your Computer for Viewing the DVR .....	52
Log in to the DVR.....	55
Installing ActiveX Controls.....	55
Viewing DVR Outside Of your Network .....	56
Option 1 .....	57
Option 2.....	58
Testing Port Forwarding .....	59
If You Cannot Connect .....	60
DDNS Setup .....	61
Logging into Software .....	64
<b>ONLINE SOFTWARE .....</b>	<b>65</b>
Live Mode.....	66
PTZ Options .....	67
<b>OTHER MOUSE OPTIONS .....</b>	<b>67</b>
<b>PLAYBACK .....</b>	<b>68</b>
<b>PLAYING BACK FOOTAGE .....</b>	<b>69</b>
<b>SETUP .....</b>	<b>70</b>
<b>NETWORK SETUP MENU.....</b>	<b>73</b>
<b>MOBILE VIEWING.....</b>	<b>77</b>
<b>DVR TROUBLESHOOTING.....</b>	<b>80</b>
<b>DVR SPECIFICATIONS.....</b>	<b>83</b>
<b>CAMERA MANUAL .....</b>	<b>85</b>
What's Included .....	85
Features.....	85
Wiring Diagram for Cameras.....	86
Drilling Template .....	86
Camera Specifications.....	87
Camera Troubleshooting.....	88
Additional Drilling Templates .....	89
<b>NETWORKING INFORMATION LOG .....</b>	<b>89</b>
<b>ADDITIONAL ACCESSORIES .....</b>	<b>90</b>

Congratulations on your purchase of the CV301-8CH! This user friendly system will allow you to monitor and protect your home or business. The coaching iMenu makes setting up and using your DVR very easy with helpful information bubbles that appear to assist you. The CV301-8CH comes equipped with H.264 compression which allows you to record and store more footage using less space, so you will never miss an important event. This manual was written to ensure that you get the most out of your CV301-8CH DVR.

## WHAT IS INCLUDED



DVR (500GB Hard Drive Installed)



8 x Outdoor Night Vision Cameras



4 x Window Warning Stickers



DC12V Power Adapter for DVR



4 x 60ft 4 PIN DIN to RCA (male) Power Cables



10ft RJ-45 Cable



Software and Manual CD



2 x 4 port power supply for Cameras



10 x RCA to BNC Connectors



IR Remote Control



USB Mouse

- Camera Mounting Hardware
- Quick Start Guide
- Instruction Manual
- RCA to RCA (Male) Cable
- 2 x Power Adapter for Camera
- 1 Year Warranty
- 24/7 Lifetime Live Customer Support

## **Record Over 1,000 Hours of Video with H.264 Compression**

The 500GB hard drive is optimized for 24/7 surveillance and uses cutting edge H.264 compression to record over 1,000 hours of continuous video<sup>1</sup>. We only use hard drives that are specifically designed for high capacity writing, which ensures long product life and accurate video data storage. H.264 compression provides an amazing picture while saving almost 50% on storage space versus DVRs with MPEG-4 compression.

## **Coaching iMenu**

As you scroll through different settings, helpful information bubbles will pop up to assist you. Learn what each setting means so that you can configure the system to your needs effectively. This user-friendly feature makes it easy to setup and use your DVR.

## **Stay Notified with Email Alerts**

This system keeps you notified of events occurring in your monitoring location. You can set the unit to automatically send alerts to your email address whenever motion is detected or cameras lose power.

## **View Video Online with No Service Fees<sup>2</sup> (Supports DDNS)**

Regardless of where you are in the world, you can view your DVR's live or recorded video footage on any Internet accessible computer<sup>3</sup> with Internet Explorer. If you have a business, take comfort in knowing what is happening there from home or abroad whenever you want.

## **Smart Phone Compatible**

The CV301-8CH is compatible with BlackBerry's, Windows Mobile, Symbian operating systems and iPhones.<sup>4</sup> This DVR allows you to utilize 3G technology, which is specifically designed to transmit your video and audio at higher speeds. Your DVR can also be set up to email your hand-held whenever specific activity occurs, such as motion detection.

## **24/7 Lifetime Live Customer Support**

Assistance is available whenever you need it. Simply visit [www.SVAT.com](http://www.SVAT.com) for video networking guides, simple tips on how to protect your property, and instructional videos on topics such as camera placement. Our customer support team can be reached by phone 24/7, or by email and live web chat services so that you will always have access to an expert.

## **8 Professional Grade Weatherproof Cameras**

Eight high resolution color cameras, made with Sharp image sensors<sup>5</sup>, provide you with a clear and consistent picture at 420 TV lines of resolution. They allow you to better distinguish facial features, which can help in the positive identification of individuals. The cameras can be used indoors and outdoors. Each one is built with professional grade aluminum housing and a sunshade to help prevent glare, deterioration and rusting<sup>6</sup>

## **See in the Dark with Automatic Night Vision**

The cameras come equipped with night vision, allowing you to see any monitored area (up to 15ft away<sup>7</sup>) in total darkness. Each camera has 12 infrared LEDs that activate automatically when it becomes dark and deactivate during the day to save energy. You will always be able to see what is happening in your yard or at your business after-hours.

## **Multiple Easy Backup Options**

You have several ways to backup your important video footage. A built-in USB port gives you the option of backing up and transferring your video footage to a USB flash drive or external USB hard drive.<sup>8</sup> You can then connect to an external CD/DVD writer and burn your footage to a disc.

## Advanced Motion Activated Recording

You have the option to record video only when motion is detected and will save you time and conserve hard drive space. You can even set individual cameras to detect motion while the others continuously record. Advanced motion detection settings ensure that false alarms are not triggered—the easy motion detection “mask” allows you to block out areas with constant movement, such as roads or blowing trees so that only suspicious activity is recorded.

## Included Mouse and Remote

Navigate the on-screen menu with ease using the included USB mouse. You can also go through the iMenu using the convenient IR remote control.

## Password Protection

Set a password and stop unauthorized users from viewing your live or recorded footage and prevent them from being able to access and change the DVR settings or halt recording.

## 24/7 Scheduled Recording

You can fully customize a weekly recording schedule. Choose which days of the week and hours of the day you want to continuously record, motion record, alarm record, or not record at all. Each camera can be scheduled with different settings.

## Customize Your Camera Display

Watch an individual camera in full screen, 4 cameras in a quad screen, or an 8 channel split screen to view all of your cameras. Zoom mode allows you to enlarge a portion of the camera’s view to get a closer look, and Sequence mode cycles through all camera views at preset interval times.

## Search by Date, Time, or Event

Simply choose the desired date and time range, and the requested video clips will appear. Clips are also labeled by event, which makes it easy to find footage that was captured by motion detection.

1. *Recording capacity may vary based on recording resolution and quality, lighting conditions and movement in the scene. Based on a 500GB hard drive, using lowest quality settings.*
2. *Requires broadband router and broadband Internet connection—not included. Internet Explorer is required.*
3. *Video playback software is not Mac compatible.*
4. *Windows Mobile is a registered trademark of Microsoft. Symbian is a registered trademark of Symbian Foundation. iPhone is a registered trademark of Apple Inc. BlackBerry is a registered trademark of Research In Motion Limited. SVAT is not affiliated with Windows Mobile, Symbian, iPhone or BlackBerry.*
5. *Sharp is a registered trademark of Sharp Corporation. SVAT is not affiliated with Sharp.*
6. *Although the cameras are water resistant they are not waterproof. Cameras are intended for use in direct exposure to water, rain or snow.*
7. *IR illumination range up to 15ft (4.5M) under ideal conditions. Objects at or beyond this range may be partially or completely obscured, depending on the camera application.*
8. *USB flash drive, CD/DVD writer, and external hard drive not included.*

# OPTIONAL ACCESSORIES



- CVW62 (60 ft. Extension Cable)

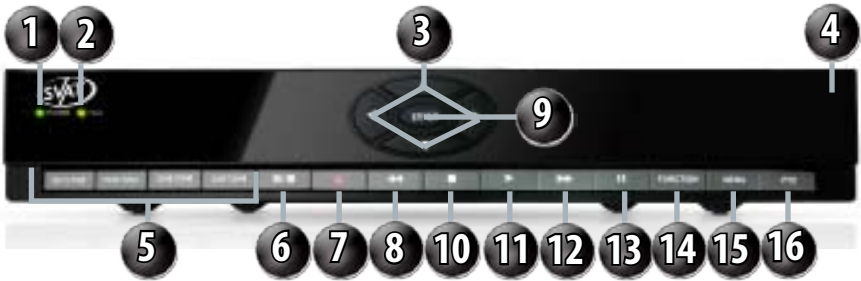


- VU300 - 19M

For more optional accessories, please see the back of the manual or visit: [www.SVAT.com](http://www.SVAT.com)

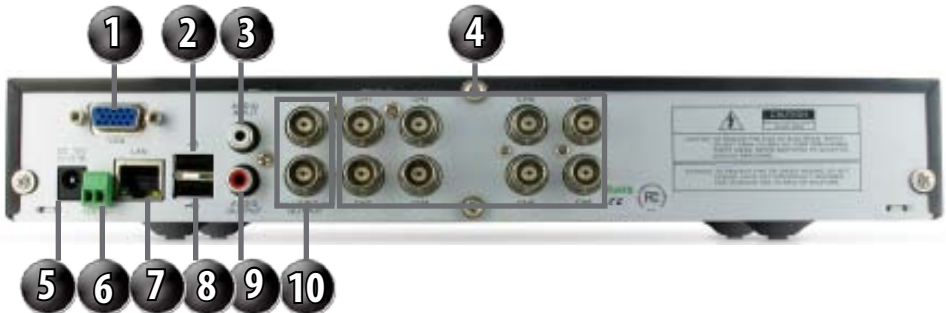


## DVR FRONT



- |  |  |
|--|--|
| <p><b>1. Power:</b> Glows green when DVR is turned on</p> <p><b>2. HDD:</b> Flashes when hard drive is in use</p> <p><b>3. Directional Keys:</b> Used to navigate through the menu</p> <p><b>4. IR Sensor:</b> For the remote control</p> <p><b>5. Channel Selection:</b> Selects channels to view. Press once to view first channel listed and a second time to view second channel listed</p> <p><b>6. Screen View:</b> Press once to view quad screen and twice to view eight</p> | <p><b>7. Record:</b> Press this to prompt manual record</p> <p><b>8. Rewind:</b> Rewinds playback footage</p> <p><b>9. Enter Button:</b> Selection button</p> <p><b>10. Stop:</b> Stops playback footage</p> <p><b>11. Play:</b> Plays playback footage</p> <p><b>12. Fast Forward:</b> Fast forwards playback footage</p> <p><b>13. Pause:</b> Pauses playback footage</p> <p><b>14. Function:</b> Opens up sub menu</p> <p><b>15. Menu:</b> Opens up main menu</p> <p><b>16. PTZ:</b> Opens up PTZ control buttons</p> |
|--|--|

## DVR BACK



- |  |  |
|--|--|
| <p><b>1. VGA:</b> Connects to VGA monitor</p> <p><b>2. Mouse:</b> Connect USB mouse here (before power up)</p> <p><b>3. Audio Input:</b> Connects to a microphone and/or audio supported camera (not included)</p> <p><b>4. Camera Connect:</b> Camera connections for eight cameras</p> <p><b>5. Power Connection:</b> Connect DVR to power source with this connection</p> | <p><b>6. PTZ:</b> Connects to two wire PTZ camera</p> <p><b>7. LAN Connection:</b> Connects to router</p> <p><b>8. USB Connection:</b> Connect USB drive here to backup footage</p> <p><b>9. Audio Output:</b> Connects to speaker/ audio output</p> <p><b>10. Video Output:</b> Allows you to attach two different monitors</p> |
|--|--|

## REMOTE CONTROL



1. **Numerical Keypad:** Buttons 1-8 will display the corresponding camera on full screen
2. **All:** Switch to quad viewing mode
3. **Menu:** Access the main menu and exit the current menu
4. **Select/Enter:** Allows you to select options
5. **Directional Keys:** Allow you to navigate through the menu
6. **Audio/Search:** Searches and finds any channels that have an audio supported camera attached to it (not included)
7. **Mute:** Mutes sound
8. **Rewind:** Rewinds footage
9. **Record:** Begins recording based on the 24 hour schedule
10. **Pause:** Pauses playback footage and starts/stops sequence mode
11. **Play:** Calls up the playback menu
12. **Fast Forward:** Fast forwards through playback footage and allows you to navigate the menu to the right
13. **Stop:** Stops recording and/or playback footage

## MOUSE



1. **Select:** Click this button to select highlighted object
2. **Scroll Wheel:** This wheel has no function on this DVR
3. **USB Connection:** Connects to the USB mouse port (top port) on the back of the DVR
4. **Deselect:** Pressing this exits the menu you are in. If you are in live view it will open the sub menu

## THINGS TO CONSIDER BEFORE INSTALLATION

- The camera should be installed between 8 and 13ft above the area to be monitored
- Before screwing in the mount for the camera ensure there are no obstructions in the camera's view
- Place cameras in the most strategic places where they can provide detailed, recorded video of every visitor.
- Having the camera in the open for people to see can help deter criminals
- To cover large, dark areas such as backyards, garages, and driveways, place cameras in strategic locations, such as on the roof or deck, this way, less cameras are needed to cover an area
- Ensure that the sunshade is positioned to avoid glare and be sure to position camera away from direct sunlight or other light sources
- For best results, the light in front of the camera should be about the same brightness as the light around the area or object being monitored
- Decide whether the camera will be wall-mounted, ceiling mounted or sit on a desk/table top. If you are mounting the camera on a wall or ceiling, use the included mounting hardware. We recommend that the mounting bracket is secured using the included screws for all installations
- Each camera comes with 60ft of video/power wire please make sure that you mount the cameras no more than 60ft from the DVR. If longer wiring distance is required, 60ft extensions can be purchased (CVW62 ) from your local re-seller or at [www.SVAT.com](http://www.SVAT.com)
- We recommend using a surge protected power bar to protect the camera's internal circuitry

## MOUNTING THE CAMERAS

1. Decide if the camera will be wall-mounted or sit on a desk/tabletop. The camera can be adjusted for either mounting scenario by rotating it to the required position.
2. Screw the mounting bracket into the camera's mounting hole, turning it clockwise.
3. Mount the camera in the desired location no more than 60 ft from the DVR unless you have purchased additional wiring. You may mount the cameras on a wall, ceiling or desk.
4. Ensure that the cameras are strongly secured into the wall.
5. Adjust cameras to the desired viewing angles.
6. For additional help on mounting the cameras, please see the drilling template, located at the back of the manual.

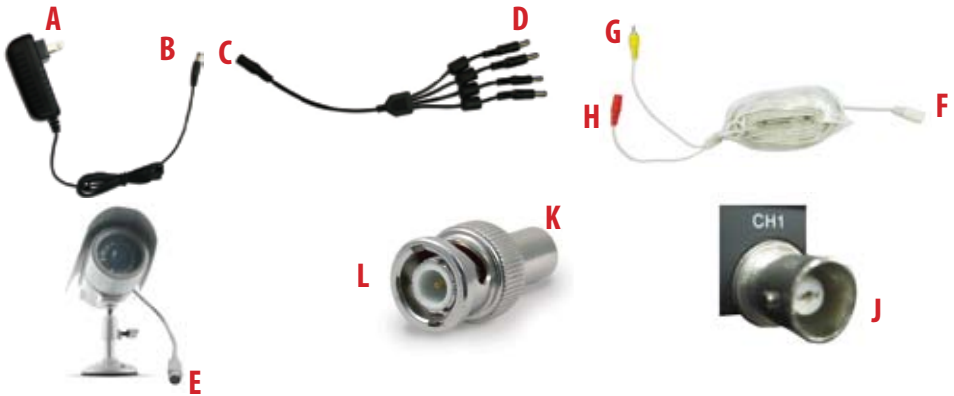
### Adjust camera to desired viewing angle



### Ensure the camera is secured into place



## WIRING FOR CAMERAS



## INSTRUCTIONS

1. Plug 12V adapter (A) into electrical wall outlet or surge protecting power bar.
2. Plug the single end of the four port power supply (C) into the male end of the 12V adapter (B).
3. Connect the 4PIN DIN female connection on the camera (E) into the 4PIN DIN male connection on the 60ft video power wire (F).
4. Plug the power jack (G) from the 60ft video/power wire into one of the ports of the four port power supply (D).
5. Attach the BNC to RCA connector (L) to the video inputs (J) on the back of the DVR.
6. Connect the yellow male RCA plug (H) from the 60 ft cable to the BNC to RCA (K) connector on your DVR.
7. Repeat the above steps for all of the included cameras.

## CONNECTING ADDITIONAL DEVICES

### CONNECTING A USB MOUSE

It is recommended to connect the included USB mouse before powering on the DVR. This will speed up the initializing process as well as make the DVR easier to use.

1. Plug the USB connection on the mouse into the top USB connection on the back of the DVR.

Plug Mouse into first USB port



## CONNECTING A MONITOR

1. Connect a BNC to RCA connector to the top VIDEO OUT connection on the back of the DVR.
2. Plug the RCA cable into the BNC connector.
3. Attach the other end of the RCA cable to a yellow RCA video input on your TV/monitor.
4. Switch the TV/Monitor source to view the DVR.  
(Consult the TV/Monitor manual for instructions on how to switch the video source)
5. The bottom video out is for a second monitor. Plugging an RCA cable into this video out would be the same as plugging it into the top video output.

### Plug in BNC to RCA connector



### Plug RCA cable to BNC



## CONNECTING A PTZ CAMERA

The CV301-8CH supports a 2 wire RS-485 connection for a PTZ camera to be connected (PTZ camera not included). Please see the PTZ camera manual for further instructions on required connections and settings.

### To connect a two PTZ camera:

1. With a small flat head screwdriver, unscrew the screw on the top of the opening.
2. Insert the wire into the hole below the top screw while it is still unscrewed
3. Re-tighten the top screw, this will lock the wire into place. Pull lightly on the wire to make sure it is secure.
4. For further instruction on connecting your PTZ camera, please see the PTZ camera's instruction manual.



## POWERING ON DVR

1. Insert the included power cord into the included power supply.
2. Plug the power cord into a power outlet (surge protected power outlet recommended).
3. Insert the power supply wire into the rear DC 12V port on the DVR.
  - After a few seconds the splash screen will appear and the DVR will start up.

### Connect to a power source to turn on DVR



## GETTING STARTED

Now that you have powered up the DVR and properly connected it to a TV or monitor you are ready to begin setting up and using the DVR. This DVR is designed to be user friendly. You will notice the coaching iMenu information bubbles describing settings that you will find in the menu. As an added convenience the DVR will automatically begin recording once it is powered on as long as at least one camera is properly connected.

## USING THE MOUSE

- The included USB mouse makes using the CV301-8CH simple and efficient. Using the mouse will make controlling the DVR very similar to using a computer. It will allow you to easily click on items to select them and make desired changes. The mouse is not necessary for operation

*Make sure that the mouse is connected to the top USB port on the back of the DVR before powering on.*



## SCREEN VIEWING

By double clicking one of the eight camera screens, the viewing mode will switch to full screen mode. Double clicking again will bring you to back to quad screen or eight screen mode. (depending on what was set before) From full screen mode you can zoom into an area of the screen. For more information on zooming in, please see "zoom" on page 14.

### Full Screen



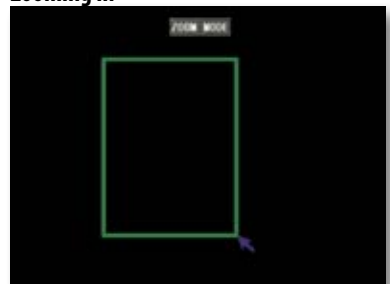
### Quad Screen



### Eight Camera Screen



### Zooming in



## FUNCTION MENU

The Function Menu can be accessed 3 different ways:

**1. By right clicking the mouse.**

To access items on this menu with the mouse move the mouse pointer over the option to highlight it and left click. To exit, move the pointer off the menu and left click.

**2. Pressing select on the remote.**

To access items on this menu with the remote, use the arrow keys to move and when the option is highlighted, press select. To exit, press the menu button.

**3. Pressing the function button on DVR**

To access items on this menu with the front of the DVR use the navigational key pad on the front of the DVR to move and when the option is highlighted, press enter. To exit, press the menu button.

Function Menu



## FUNCTION MENU OPTIONS

### Main menu

Selecting this accesses the Main menu. If the menu is locked, you may need to unlock first.

### To unlock the menu:

Select the area the password will be typed and a digital number pad will appear.

Type in the password. The default password is **123456**.

Once you have typed in the password, press the enter button to close the digital number pad.

Click "APPLY," if the password is correct the main menu will open.

### Unlock Menu Prompt



### DEFAULT PASSWORD

123456



## Video Search

Selecting this shortcut prompts the video search menu to appear. This allows you to search through the previously recorded footage.

For more information on the video search menu, please see PLAYBACK.

## PTZ Camera

Selecting this shortcut opens the PTZ menu. PTZ stands for Pan, Tilt, Zoom cameras (Not included). This menu option only controls compatible PTZ cameras that are properly setup in the device management section of the menu.

**The controls for the PTZ camera are as follows:**

- Slow Fast:** This bar allows you to adjust the speed that the camera will move
- Zoom:** Pressing the + zooms in and pressing the – zooms out
- Focus:** Pressing the + focuses the picture and pressing the – takes the focus away. This is useful if an object is either close range or long range and is being displayed blurry
- Iris:** Pressing the + lets in more light and pressing the – takes light out of the picture. This is useful for varying lighting situations as well as correcting backlight issues

**Cruise Setup:** This function allows you to setup preset positions for the PTZ to follow, the PTZ camera will cruise through your set positions and times. Not all PTZ cameras have this function

**Directional keys:** Clicking on the directional arrows moves the camera in the direction of that arrow

**To set up cruise:**

1. Right click the mouse and open PTZ.
2. Select "Cruise Set".
3. Select the channel that the PTZ camera is connected to. (The PTZ camera must already be configured).
4. Use the directional buttons to adjust the camera to the places you would like the PTZ camera to view in cruise mode. Press the SET button at each desired position.
5. Click on stop time and set the time (in seconds) for how long you would like the PTZ camera to stay at each position.
6. To review your set points, select the current point you would like to view and click on "go to".
7. Click "save" and then "exit".
8. To Erase all Preset cruise points click on "clean."
9. To start the PTZ cruise, Open the shortcut menu and select "start cruise". To stop the PTZ cruise, Open the shortcut menu and select "stop cruise".

PTZ setup menu



PTZ Cruise





## Start Record

- Selecting this shortcut prompts the DVR to begin recording (if it is not already recording). This will override any schedule that is set

## Stop Record

- Selecting this shortcut prompts the DVR to stop the manual recording

## Start Cruise

- Selecting this option prompts the PTZ cruise to start (if you have set up the PTZ cruise). Selecting it again will stop the PTZ cruise

## Start Auto Seq

- Selecting this option prompts the cameras to begin sequencing through each camera and then to quad screen. This function will only work if at least one camera is connected to the device. See Auto Seq setup on Pg. 18 for more information

### To start auto sequence:

1. Right click the mouse and select "Start Auto Seq", the cameras will then start sequencing through.
2. To stop auto sequence, double click the screen and you will return to the quad view screen.

## PIP Mode

PIP stands for picture in picture. This mode allows you to view camera one in full screen and up to two camera channels (of your choice) as smaller screens in either corner of the screen. You must have at least two cameras connected to your DVR for PIP mode to function properly.

### To turn on PIP mode:

1. Right click the mouse and scroll to "PIP mode", once highlighted, two options will appear, 1x1 and 1x2.
2. 1x1 allows you to view camera one in full screen and another camera in the lower left corner of the screen. 1x2 allows you to view camera one in full screen and two other cameras in the bottom left and right corners of the screen.
3. For both options, clicking on the small camera screen will change the camera that you are viewing.
4. To exit PIP mode, right click the mouse.



PIP Mode 1x1



PIP Mode 1x2

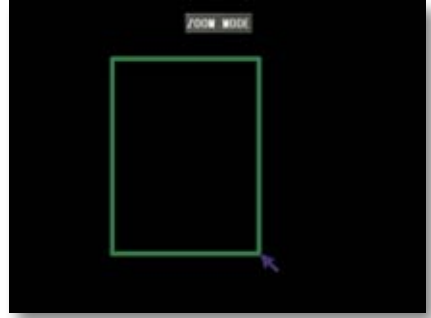


## Zoom

When viewing a camera in full screen mode, your function menu gives you an option to zoom in. This is good if you would like to get a better view of something that you are monitoring.

### To zoom in:

1. Double click the screen you would like to zoom in on. This will open to full screen mode.
2. Right click the mouse, scroll to "Digital Zoom" and press select.
3. Using the mouse, click and drag a square around the area you would like to zoom in on.
4. Once the square has been set, release the mouse button and the screen will zoom in on the selected area.
5. To exit the zoomed in screen, right click the mouse.



## MAIN MENU

The main menu can be accessed by pressing the menu button on the front of the DVR or by selecting it from the function menu.

To access the main menu with the mouse, right click and select main menu from the function menu. On the DVR front panel and remote, press the "menu" button.

To select anything from the main menu, left click the mouse, press select on the remote or press "enter" on the front of the DVR.

When you access any sub-menu there are a few options that may be available on the bottom of the page.

### The options include:

1. **Default:** This button will restore all settings on the current page to the default settings.
2. **Apply:** This button will apply and save changes made to the current menu page.
3. **Exit:** To exit the current menu, select exit at the bottom of the screen.



### Main Menu



*Note: All sub menus have some or all of the above options.*

## USING THE KEYBOARD

The keyboard is used when typing in passwords, dates and labeling/naming certain things. This keyboard will appear multiple times when working with your DVR.

1. Select the letters you would like by pressing select. By selecting the "ABC" tab on the side, you will change the letters to be lower case and selecting it again will change the letters to numbers and again from numbers to upper case letters. To erase, select the backspace button (  ).
2. When you have typed in what you like, press the enter button (  ) on the keypad to close the keyboard.

### Keyboard(s)



## CAMERA SETUP

The camera setup menu allows you name each camera, adjust where the title of the camera appears on screen, adjust the color of each camera, turn cameras on and off as well as decide on where the time will be displayed on screen.

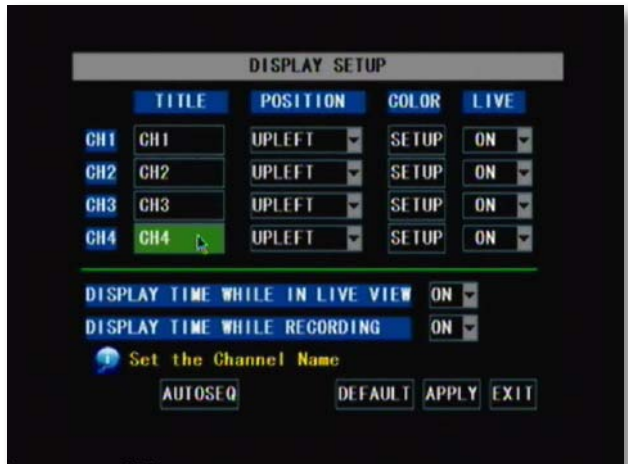
### Title

This will be the name of the camera that is displayed on screen. It is good to name the camera something to reflect what the camera is monitoring. Ex. Garage or Driveway. A maximum of 8 characters can be used.

#### To change the title of the cameras:

1. Select the title column next to the camera you would like to change and a keyboard will appear.
2. Enter the title of the camera you would like then select enter to close the keyboard.
3. Select "apply" from the main camera menu to save your changes.
4. Repeat for all desired cameras.

#### Camera Menu



## Position

This will determine where the camera title will be displayed in the camera viewing window.

### To change the position of the title:

1. Select the position column next to the camera you would like to change and a drop down list will open.
2. Select the position where you would like the title to appear on the camera screen. If you would like the name NOT to display, set the position to "OFF"
3. Repeat for all desired cameras.
4. Select "apply" to save the changes.

## Color

Clicking this button will allow you to adjust the image settings for an individual camera.

### To adjust the color on a camera:

1. Select the color column next to the camera you would like to change and a full screen view of the selected camera will appear along with scroll bars to adjust Hue, Brightness, Contrast and Saturation.
2. To adjust each bar, make sure it is highlighted in red. To turn the settings up and down, click and drag the bar in the center.
3. Once you have adjusted the color to your liking, select "apply" and then "exit" to return to the camera menu.
4. Repeat for all desired cameras.

### Color Setup



## Live

Choose whether or not to display a camera in live viewing mode. The camera will record and playback normally, it just will not appear on the live viewing screen. This is beneficial so that only authorized users can see what the camera is viewing.

### To turn the live viewing of a camera on or off:

1. Select the live column next to the camera you would like to turn on/off and a drop down list will open.
2. Select "on" or "off" from the drop down list to turn the camera on or off.
3. Repeat for all desired cameras.
4. Select "apply" to save the changes.

## Time Display

This DVR gives you an option to display the time while it is recording and while it is in live view mode. The default setting has both time displays set to "ON".

**If you would like to turn either live view time display or record time display off or on:**

1. Select the drop down menu beside which ever time display mode you would like to change and highlight "off" or "on" and press select.
2. The time display will now be changed.
3. Select "apply" to save settings.

### Time Display Options



## Auto Sequence

When you select "AUTOSEQ", at the bottom of the screen a separate menu pops up. This menu has all the camera channels and sequence times (in seconds).

- The time (in seconds) next to each camera will be how long each camera will stay on the screen while in sequence mode
- You can choose between OFF and 1-10 seconds for each camera
- You can adjust the time for each individual camera and all cameras at once (quad)

### Auto Sequence Menu



**To adjust the time for auto sequence:**

1. Select the drop down menu beside the channel(s) you would like adjusted.
2. Highlight the time you would like the camera(s) to stay on screen when in sequence mode and press select.
3. Select "apply" to save settings.

## RECORD SETUP

This option allows you to turn on or off each camera, pick a video quality, turn on or off auto record, pick a recording mode (time schedule or always) as well as decide on a file size (recorded video size in minutes).



### Channel (On/Off)

**To turn channels on or off from recording:**

1. Select the drop down menu beside the channel(s) you would like adjusted.
2. Highlight whether you would like the camera on or off and press select.
3. Select "apply" to save settings.

### Quality

**To change the quality of the recorded video:**

1. Highlight the quality you would like to change to (Best, Good or Normal) and press select.
2. Select "apply" to save settings.

### Audio Rec.

**To turn audio recording On or Off:**

1. Select the drop down menu beside "Audio Rec".
2. Highlight which camera you would like the audio to record from and press select. This has to be an audio supported camera (not included) and it must be connected to the RCA audio input at the back of the DVR.
3. Select "apply" to save settings.

### File Size

The DVR allows you choose the maximum length that each recorded video clip will be. This is for backup purposes.

**To adjust and/or set a file size:**

1. Select the drop down menu beside "File size".
2. Highlight the time you would like each recorded video clip to be (15, 30, 45 and/or 60 min) and press select.
3. Select "apply" to save settings.

*Note: Higher quality and resolution settings use up more space on your hard drive.*

## Rec. Mode

The DVR allows you choose whether it always records, or if it records based on a set schedule.

### To program your DVR to always record:

1. Select the drop down menu beside "Rec. Mode".
2. Highlight the word "always" and press select.
3. Select "apply" to save settings.

### To set your DVR for schedule record:

1. Select the drop down menu beside "Record Mode".
2. Highlight the words TIME SCHEDULE RECORD and press select.
3. Select "apply" to save settings.

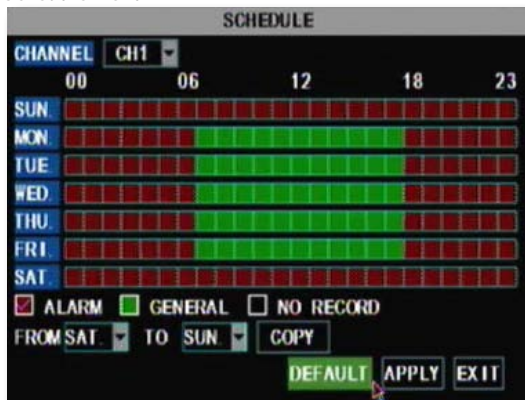
The default schedule is set to general record on a 24/7 schedule.

### To customize your record schedule

This DVR allows you to set different schedules for each channel, what days the DVR will follow the set schedule as well as select what record mode will be used. (Normal record, motion record or when the alarm is detected.)

1. From the camera setup menu, make sure the DVR is set to "TIME SCHEDULE RECORD."
2. Highlight the word SCHEDULE (beside the record mode drop down list) and press select.
3. This will bring you to a separate screen.
4. Select the drop down list beside the word "CHANNEL", highlight and select the camera you would like to set that schedule for.

### Schedule Menu



### To change the schedule:

1. At the bottom of the schedule area, highlight the type of recording you would like to insert and press select, a check mark will appear in the corresponding box.



**Alarm record:** (Red) Records only when motion is detected



**General Record:** (Green) Constantly records



**No Record:** (Transparent) Footage will not record at this time

2. In the schedule area, scroll to the day and time you would like to adjust (to record, alarm record or no record) and press select. The time slot will fill with the corresponding color.
3. Repeat for all wanted times and days for each desired camera (or all cameras).
4. Once you have set all schedules for the desired cameras, days, times and record modes select "apply" to save settings.

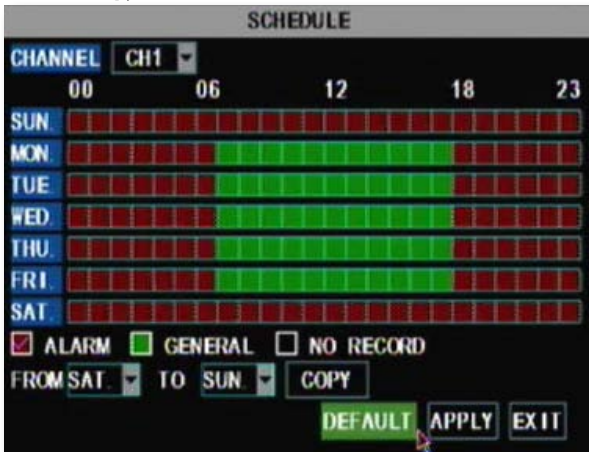
## Schedule Copy Function

Selecting the COPY button will copy one days schedule and paste it into other days that you specify. This is useful if you customize a schedule for a particular day and would like to apply the same schedule for other days of the week.

### To copy one day's schedule to another or all other days:

1. Select the drop down menu beside the word "from".
2. Highlight the day you would like copied.
3. Select the drop down menu beside the word "to".
4. Highlight the day you want the copied schedule to be pasted into.
5. Highlight the "copy" button and press select, the days you had selected will all have the copied schedule in it.
6. Once you have completed all desired schedules, select "apply" to save settings and "exit" to exit back to the record setup menu.

### Schedule Copy Function



*Note:  
Please be aware  
that you must set  
a schedule for each  
camera that is  
connected unless  
you decide to set all  
cameras to the exact  
same schedule.*

## NETWORK SETUP MENU

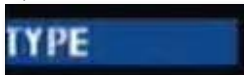
The network setup menu is your gateway to viewing your footage online. This menu holds the information you need to set up on-line viewing. The DVR is pre-configured to work with most basic network setups and the values shown on the screen are the values you will be using to setup and view the DVR on a computer.

The network setup menu allows you to configure all the settings necessary to view your DVR online. You can configure the way the DVR acquires an IP address, adjust which ports are used to communicate with the DVR, adjust your DNS as well as set your information for a DDNS account.

### Network Menu





**Type:**

Determines how the DVR will acquire an IP address; DHCP, Static or PPPoE.

**DHCP:**

DHCP (Dynamic Host Configuration Protocol) address is the most common setup for home or office networks. This allows the DVR to automatically receive an IP address from the router. By default the IP mode will be set to DHCP and, in most situations this is acceptable.

**Static IP:**

Static IP addresses are manually assigned by an administrator. A static IP address would be beneficial if your internal IP address changes often. Most home or office networks today do not use static IP addresses. If you are unsure of whether you need a static or dynamic IP address, please contact your network administrator.

**PPPoE:**

Used for DSL services where individuals connect to a DSL modem. It is recommended to store the PPPoE information in the router, if the PPPoE information is not stored in the router, the DSL modem will need to be configured. If you are using a PPPoE connection, contact your Internet Service Provider for your PPPoE name and password.

**To adjust the type of IP Mode you are using:**

1. Select the drop down menu beside the word TYPE.
2. Highlight the IP Mode you would like to use and press select.
3. Select "apply" to save settings.

## IE Port:

Refers to the port that your DVR will use to communicate with your network and Internet. Knowing this port is necessary for the DVR to be viewed properly over the Internet.

## Media Port:

This port is used to initiate communication to the DVR. The media port is entered at the end of the IP address to connect to the DVR. If using the default port (80), your Internet browser will automatically add port 80 at the end of the address, even though it may not be visible. If using a port other than 80, you will need to add that port to the end of the IP address when typing it into the web browser. (Ex. If using port 2000 and the IP address is 192.168.1.103 you would type <http://192.168.1.103:2000> in the address bar of Internet Explorer).

## IE Port Vs. Media Port:

This DVR has two different ports required for online viewing, IE Port and Media Port. Most of the DVR communication goes through the IE Port. It is used for accessing the DVR footage, software and the DVR menu. Media Port is used to initiate the communication to the DVR. It is used as a gateway to the main port. The media port should be left as 80 unless port 80 being blocked by your ISP.

### **To Change the port you are using:**

1. Select the drop down menu next to the port you would like to change and a keyboard will appear.
2. Type the port number you would like to use then select enter to close the keyboard. The ports cannot be the same number
3. Select "apply" to save your changes.

## IP ADD:

(IP ADDRESS). The numbers here represent the Internal IP address of your DVR. If your DVR is not properly connected to the router, the address will appear as 0.0.0.0. or the words "getting IP" will be displayed

### **To acquire an IP address:**

- Make sure the DVR's IP mode is set to DHCP
- Once adjusted to DHCP, select "apply" to save and exit the menu
- Unplug the power cable from the DVR
- Connect the included network cable from the back of the DVR to your router
- Plug the power cable back into the DVR
- Enter the network setup menu to verify that the IP Address is displayed on the network setup

**Note:** *The internal IP address is the most important number on the Network Setup Menu screen and the Ports will be used to set up Port Forwarding which is necessary for viewing the DVR outside of the current network.*

## DNS:

Stands for “Domain Name System” and is for advanced network setup. DNS is used to convert common names into website IP Addresses. It is best to leave these settings as is as it usually the same as the router.

### To Change the DNS address:

1. Highlight and select the number next to DNS and a keyboard will appear.
2. Type the number you would like for a DNS address then select enter to close the keyboard.
3. Select “apply” to save your changes.

## DDNS:

DDNS (Dynamic Domain Name Service) This Menu option allows you to set up a common name for the DVR instead of typing in an IP address. This feature is used if you have a Dynamic IP address from your ISP and the IP address is constantly changing. **The setup for DDNS on your computer is in networking guide on Pg 61.**

### To setup your DDNS on the DVR:

1. Highlight and select DDNS setup.
2. Highlight “DDNS” and change from “OFF” to “ON”.
3. Highlight server, this should be set to DynDNS. Choose your DDNS provider from the list.
4. Highlight “HOST NAME” and press select, the keyboard will appear to input your host name.
5. Highlight “USER NAME” and press select, the keyboard will appear to input your user name.
6. Highlight “PASSWORD” and press select, the keyboard will appear to input your password.
7. Once all the proper information is inserted into the boxes, select “apply” to save your settings.

### DDNS Setup

DDNS SETUP	
DDNS	ON
SERVER	dyndns
HOST NAME	nadiadvr.dyndns.com
USERNAME	nadiadvr
PASSWORD	*****
[DEFAULT] [APPLY] [EXIT]	

See DDNS Setup for more information on the DDNS setting.

## VIDEO SEARCH

This option allows you to search through your previously recorded footage and find footage recorded from particular dates and times. You can access the video search menu by pressing play in live monitoring mode, from the shortcut menu or by selecting the "Search" option on the main menu.



### To access and play back footage from a particular date and time:

1. Select the channel you would like to view recorded footage from (1) and press select. Then, highlight and select a date you would like to view footage from (2) a keyboard will appear for you to input the date that you would like to see footage from. Highlight and select search (3) to open up the search times for that date.
  - Once you have searched for a particular month, you can view times and footage from each day of that month by double clicking on the day in the calendar below (4)
  - The days and times that have Motion/Alarm recorded footage stored on them are red in the time schedule (4)
  - The days and times that have General Recording stored on them are green
  - If the time is not red or green, it means there was no recording during that time
3. To search for a particular time on a set date, highlight the time you would like to watch (4) and press select, a keyboard will appear to input the start time of the footage you would like to view. Click on Playback (6) to start viewing from that date and time.
4. If footage was recorded within the selected date and time slot, the footage will begin to play. If nothing was recorded, a screen will appear and read "no record file found". Check your Date/Time and try searching to see what video footage is available.

## File List

This DVR allows you to view the file list for each day that you have recorded footage. The file list allows you to see what the type of recording was (normal, motion detection), the date and time the footage was recorded, the size of the footage, as well as gives you an option to backup particular recorded events.



### To access the file from the video search menu:

- Pick a channel you would like to view footage from, then access the search option and select the date input area. A keyboard will appear to input the date you would like to see the footage from.
- Once the proper date has been entered, highlight and select “search” to open up the available times for that date. The days and times that have recorded footage stored on them are highlighted red or green. Make sure that there are days that have recorded footage on them.
- Select the Date you wish to view the file list from.
- Select the file list button and a separate screen will appear. This screen will have a list of all the recordings from that day.
- If you would like to filter out the types of recordings on this list, select what type of recording you would like to see from the drop down menu next to the word “TYPE”. You can view only alarm (motion) recordings, only normal recordings or all recordings.
- The list displays the following information (from left to right).
  - CH:** The channel with recorded footage
  - Time:** The time range that the footage was recorded
  - Size:** The size of the file – the larger the file the longer the video clip
  - Type:** The type of footage that was recorded (Alarm or Normal)
  - BAK:** Allows you select video clips to backup onto a USB device
- The buttons along the side of the list, when highlighted and selected do the following:
  - First:** Brings you the beginning of the list (oldest footage first)
  - Prev:** Brings you back a page if not already on the first page
  - Next:** Brings you forward a page
  - Last:** Brings you to the last page of recorded footage (most recent footage is last)
  - All:** Selects all footage on the page to be backed up
  - Reverse:** Inverses the selected and non-selected footage for backup
  - Backup:** Prompts back up of the selected video clips
  - Exit:** Exits the file list

## Backup

Your DVR allows you to backup footage onto a USB device, USB HDD, or a USB CD/DVD burner and play it back on your computer.

### To Backup footage onto USB device:

1. Make sure a USB device or USB burner is plugged into the proper USB connection on the back of the DVR.
2. Access the file list from the particular day you would like footage backed up. (Instructions on Pg. 26)
3. Highlight and select the box under the word BAK next to the video clip(s) you would like backed up.
4. Select the backup button.
5. This will prompt the DVR to begin backing up footage to the USB device or USB burner.
6. Once the selected footage has backed up onto the USB device or USB burner, highlight and select "exit" to exit the menu.
7. To view the backed-up footage on your USB device please see "computer playback" section of the manual. (Pg. 45). To view the backed up footage on a CD/DVD, follow the basic instructions for your CD/DVD player.

### Connect USB device into bottom USB port



*Note: The Backup format is .264 and will require a player of conversion program to play the file. Video clips can also be played back using the web viewer.*

## DEVICES

Selecting this menu option opens up a separate sub menu that allows you to select and configure the options for each particular device associated with the DVR. The devices include:

- **HDD:** Hard disk drive
- **Alarm:** Internal alarm (external alarm not compatible)
- **PTZ:** PTZ camera setup (PTZ camera not included)
- **Mobile:** Online mobile viewing setup
- **Motion Detection:** Motion detection settings
- **Exit:** Exits the menu

### Device Menu



## HDD

This menu option gives you information about your HDD (Hard Disk Drive), allows you to enable overwrite mode, and format the hard drive and/or USB drive.

### *The information that this option gives you includes:*

- **HDD Status:** Displays the current operating status of the hard drive. If the Hard Drive is functioning normally it will display "OK"
- **Total Space:** Tells you how much space you have altogether on your HDD
- **Free Space:** Tells you how much space you have available to record on the HDD before all the HDD space is used up
- **Usable Rec Time:** Amount of remaining time available to record

### HDD Menu



## Overwrite

When the HDD has overwrite enabled, it will record over the oldest footage once the HDD fills up instead of stopping the recording, this way the DVR is always recording. If you want to stop recording when the HD is full, set overwrite to "Disable".

### *To Enable/Disable overwrite mode:*

1. Select the drop down menu beside "Overwrite".
2. Select either "enable" to turn overwrite on or "disable" to turn overwrite off.
3. Select "apply" to save settings.

## HDD Format

Formatting the HDD erases all recorded video and audio on your Hard Disk Drive. Formatting will not erase any of your custom settings on your DVR.

### To Format the HDD:

1. Highlight the "Format HDD" button and press "select".
2. A screen will come up asking you if you are sure you want to format everything on your HDD.
3. Select "OK" to format the HDD or "cancel" to prevent formatting.
4. It may take a few minutes to format the HDD. Formatting cannot be stopped halfway through.
5. Once formatting has completed a screen will come up and let you know that the HDD has formatted successfully.
6. Select "OK" then, exit the menu and the DVR will restart.
  - *Formatting HDD does not change any settings, it only erases all your recorded footage.*

## USB Format

USB format erases anything you have stored on your USB device. Before formatting, make sure your USB device is connected to the bottom USB port on the back of the DVR.

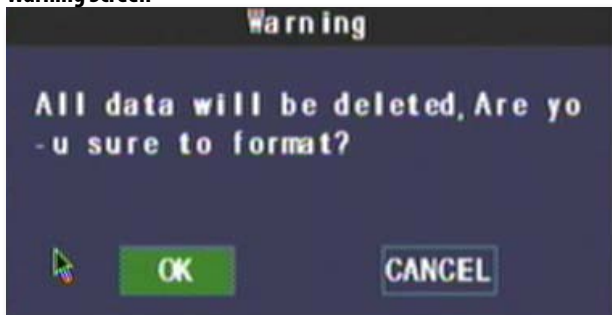
### To Format the attached USB drive:

1. Highlight and select the "USB Format" button.
2. A screen will come up asking if you are sure you want to format your USB device.
3. Select "OK" to format the USB or "cancel" to prevent formatting.
4. It may take a few minutes to format the attached USB. Do not remove the USB drive during this time.
5. Once formatting has completed a screen will come up and let you know that the USB has formatted successfully.
6. Select "OK" and you will have successfully formatted the attached USB drive.

### HDD and USB format buttons



### Warning Screen





## Alarm Setup

The alarm menu allows you to adjust for which alarms you would like set, adjust time the internal buzzer will sound for as well as set email notifications. This DVR gives you the option to have email alerts sent when motion is detected.

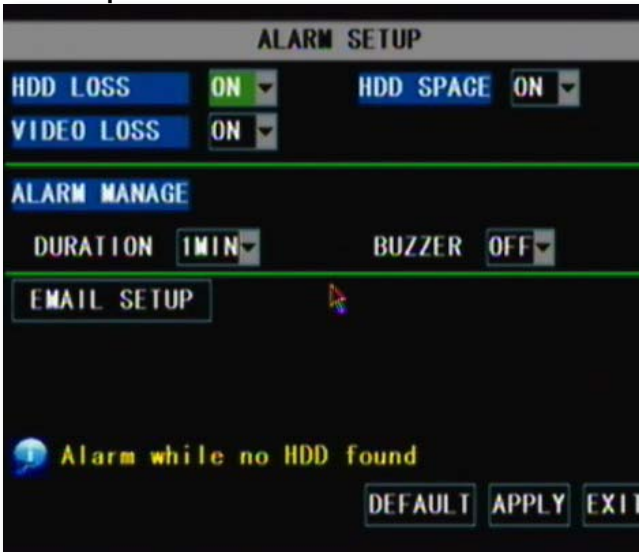
### To turn on alarm:

1. In the alarm menu go to the alarm notification(s) you would like to be notified on (HDD LOSS, HDD SPACE, VIDEO LOSS) and press select to open the drop down list.
2. Highlight and select "ON" for each function you would like to be notified on.
3. Next to the word "Buzzer", highlight and select the drop down list and highlight and select if you would like the alarm on or off.
4. Next to the word "Duration", highlight and select how long you would like the alarm to sound for when the alarm is triggered.
5. Once you have set the alarm settings to your liking, select "apply" to save your settings.

### To set notifications:

1. In the alarm menu go to the notification(s) you would like (HDD LOSS, HDD SPACE, VIDEO LOSS) and select to open the drop down list.
2. Highlight and select "ON" for each function you would like to be notified on.
3. Highlight and select "apply" to save your settings.
  - Now that you have set which alarms you would like to be notified on, you can set up your DVR to give an audio alert when those alarms are triggered. You can also set up your DVR for an audio alert and/or email alert when motion is detected.

### Alarm Setup



## To set up email notification:

1. Highlight and select "email setup" and a separate screen will appear.
2. Select the drop down list next to email and highlight and select "ON".
3. The following information to be entered/adjusted will appear:
  - SSL:** SSL allows for a more secure transfer of data. This setting is defined by your mail provider.
  - SMTP PORT:** The port that your emails will be sending from; a good default port to set this to is 25.
  - SMTP:** Set your SMTP mail server address, this is going to be provided by your email service provider.  
**For example:**
    - Google GMAIL:** smtp.gmail.com
    - Yahoo! Email :** smtp.mail.yahoo.com
    - AOL Mail :** smtp.aol.com
  - Send email:** This is the address that the DVR will use to send the alert emails. You must have permission to send emails from this email account.
  - Sender PW:** The password you use to access the above email account must be entered here.
  - Recv email:** This is the email that your DVR will send the alerts to. This can be the same as the sender's email or a different email address.
4. Once you have entered all the information, select "apply" to save settings, and "exit" to exit the email setup screen.

## Email Setup

The screenshot shows the 'EMAIL SETUP' menu with the following fields and options:

- EMAIL:** ON (dropdown menu)
- SSL:** OFF (selected radio button), ON (radio button)
- SMTP PORT:** 00000 (text input field)
- SMTP:** (empty text input field)
- SEND EMAIL:** (empty text input field)
- SEND PW:** (empty text input field)
- RECV EMAIL:** (empty text input field)

At the bottom of the screen are three buttons: **DEFAULT**, **APPLY**, and **EXIT**.

## PTZ Setup

PTZ setup allows you to input information for a PTZ camera. (PTZ cameras not included) The information must be entered in the DVR so that the DVR works with your PTZ camera and all its functions.

### To input the PTZ information:

1. Find which camera channel the PTZ camera(s) are hooked up to and from that channels row on the PTZ setup menu, input the proper information for your PTZ camera.
2. The information you need to select will be specified in the PTZ manufacturer manual.
3. Choose to enable/disable cruise mode for the PTZ camera, once all the correct information is entered into the DVR, select "apply" to save changes.

## Mobile Setup

The CV301-8CH is compatible with iPhones, BlackBerry, Windows Mobile and Symbian operating systems. The mobile setup menu allows you to input the user name and password you would be using to view your DVR through your mobile phone. It also allows you to adjust which port your phone will be viewing from. Port forwarding on the router must be configured for this port for mobile viewing to work.

- Instructions for viewing your DVR through a mobile phone are in the network guide of this manual on Pg 77
- Software is required to be installed on the mobile device

### To adjust the user name, password and server port for mobile login:

1. Select the column next to the setting you would like to change and a keyboard will appear.
2. Type the name, password and port you would like then select enter to close the keyboard. (User name and passwords are case sensitive).
3. Select "apply" from the main camera menu to save your changes.
4. For more information about mobile setup please see Mobile Viewing (Pg. 77)

### Mobile Setup



## Motion Detection

This menu option allows you to adjust the motion detection settings for each individual camera. The settings you can adjust include turning motion on or off, adjusting the sensitivity and selecting the motion detection area.

### *To change the status of motion detection for each camera:*

1. Select the "status" drop down list under the camera you would like to turn motion detection on/off.
2. Select "on" or "off" from the drop down list to turn the motion detection on or off for that camera.
3. Repeat for all desired cameras.
4. Select "apply" to save the changes.

### *To change the sensitivity of motion detection for each camera:*

1. Select the "sensitivity" drop down list under to the camera you would like to adjust the motion detection sensitivity.
2. Select 1 to 4 from the drop down list to adjust the sensitivity. 1 is the lowest sensitivity and 4 is the highest sensitivity.
3. Adjust the sensitivity for all desired cameras.
4. Select "apply" to save the changes.

### Motion Detection Menu



## MD Area

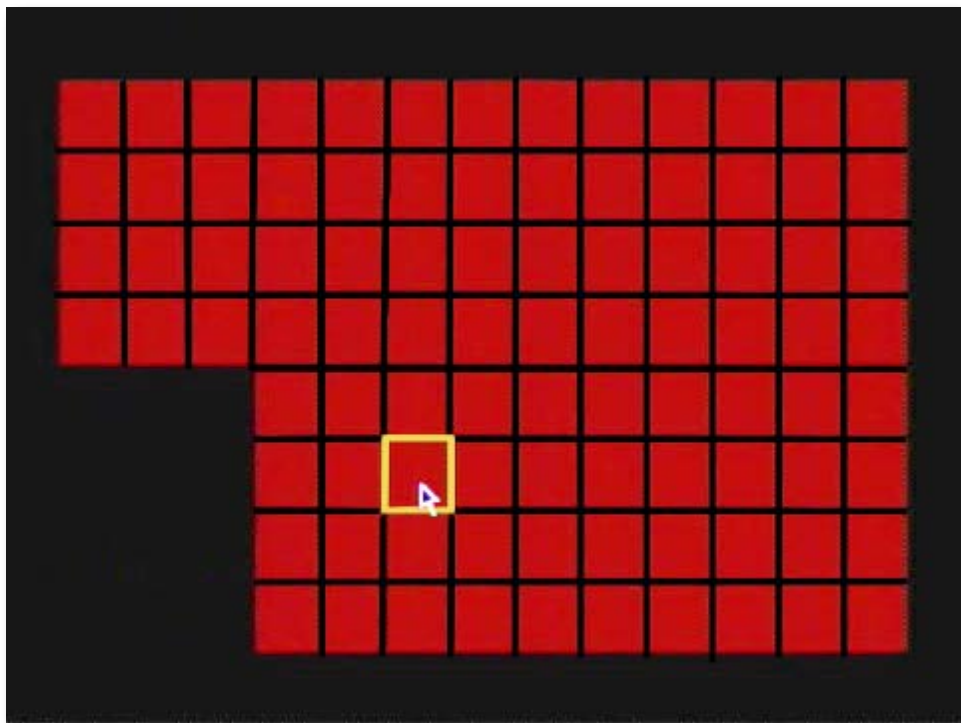
MD area stands for Motion Detection area. This setting allows you to adjust particular areas of each camera where motion will and will not be detected. This is good if you had a camera pointed towards something that is always moving, such as a busy road. This way the DVR only records motion that is out of the ordinary, thus saving you HDD space and more days of recording.

### To adjust the MD area

1. Select the setup option under to the camera you would like to adjust the motion detection area and a separate screen will appear with a red mask on the picture and a grid.
2. The screen is fully red; this is because the DVR is automatically set to detect motion throughout the whole screen.
3. To adjust the motion detection area for the desired cameras, highlight the squares where you do NOT want motion detected and press select. When the area is no longer shaded in red, the area will no longer detect motion.
4. Once the motion detection areas have been determined, exit the screen by right clicking or pressing "ESC" then select "apply", to save settings.

*Note: It is most efficient to set this up using the mouse.*

### Motion Area Mask



## SYSTEM SETUP

This menu option allows you to change system settings on your DVR. The settings you can change include:

- **Date and Time:** Adjust date, time and daylight saving time
- **Password:** Turn the password function on/off as well as change the password
- **Video:** Adjust video resolution as well as video standard
- **Language:** Eight languages to choose from
- **Info:** Gives you information about the device, software version, and the MAC address
- **Maintenance:** Allows you to adjust auto maintenance, reboot system, update system and re-load all of the default settings

### System Setup Menu



### Date and Time

This menu option allows you to adjust the date and time, change the format of the displayed date, adjust the time format, set time zones and adjust the DVR for daylight saving time.

### To adjust the Date:

1. Select the column next to the date you would like to change and a keyboard will appear.
2. Type the date in the order of the selected format (listed above time format) then select enter to close the keyboard.
3. Select "apply" to save your changes.

### To adjust the Time:

1. Select the column next to the time you would like to change and a keyboard will appear.
2. Type the time in the order of the selected format (listed below date format) then select enter to close the keyboard.
3. Select "apply" to save your changes.

### To adjust the Date Format:

1. Select the scroll bar next to "date format" and a list will appear.
2. Highlight and select the type of date format you would like.
3. Select "apply" to save your changes.

### To adjust the Time Format:

1. Select the scroll bar next to "time format" and a list will appear.
2. Highlight and select the type of time format you would like. Choose between a 12 hour clock or a 24 hour clock.
3. Select "apply" to save your changes.

### Time Setup



## DST

DST stands for daylight saving time; you can adjust the DVR to change automatically when daylight saving time approaches, this is so you don't have to go back and do it yourself. You can also customize when the DVR changes for DST.

### To set the DVR to adjust for daylight saving time on its own:

1. Select the scroll bar next to DST and list will appear, turn DST on.
2. Next to Mode, highlight default and press select to turn the automatic DST adjustment on.
3. Select "apply" to save your changes.

### To customize the DVR's daylight saving time adjustment:

1. Select the scroll bar next to "DST mode" and list will appear.
2. Highlight "custom" and press select, a custom list will appear.
3. Adjust the time you want the clock to go back an hour by adjusting the week and month next to "start time".
4. Adjust the time you want the clock to go forward an hour by adjusting the week and month next to "end time".
5. To adjust the week and month that DST changes, use the drop down list, highlight the week and/or month you would like and press select.
6. Once everything has been adjusted to your liking, select "apply" to save your settings.

### Time Setup with DST options





## Password Setup

This menu selection allows you to change the device ID, enable password protection as well as set a new password for users and admin on your DVR. When you enable password protection, you will be prompted to insert a password each time you wish to access the main menu. The DVR will automatically log the user of admin out after 60 seconds.

### To Change the Device ID:

1. Select the box next to "device ID" and a keyboard will appear.
2. Type the name you would like then select enter to close the keyboard.
3. Select "apply" to save your changes.

### To Enable Password Protection:

1. Select the scroll bar next to "password enable" and list will appear.
2. Highlight and select "On" to turn the password enable on.
3. Select "apply" to save your changes.

### To Change the Password

You have the option to change the password for user and admin. A user will only be able to access the search menu to view saved footage, whereas an admin will be able to access anything in the menu. Both default passwords are set to **123456**.

1. Make sure password enable is set to "ON".
2. Select the \*\*\*\*\* box next to the password you would like to change and a keyboard will appear.
3. Type the password you would like then select enter to close the keyboard.
4. Press "Menu" and highlight "Next" to confirm.
5. Type in the same password again, next to "confirm" in order to confirm the password then select enter to close the keyboard.
6. Once you have entered the desired password, select "apply" to save your changes.

### Password Setup



## Video Setup

This menu option allows you to adjust the resolution of the VGA output.

### To adjust the resolution for a VGA device:

1. Select the scroll bar next to "VGA resolution" and list will appear.
2. Highlight the resolution you would like and press select. The higher the resolution, the better the quality will be but the more space it will use up on your HDD.
3. Select "apply" to save your changes.

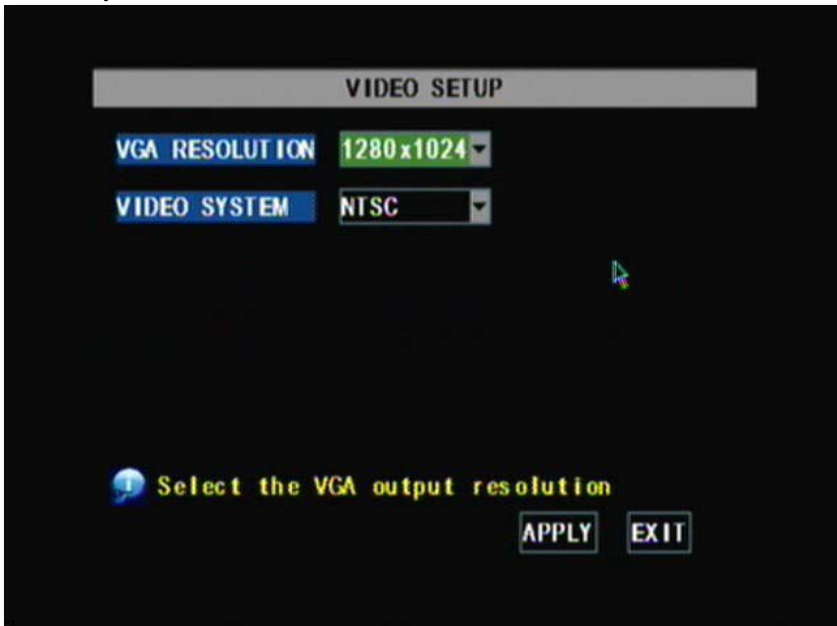
### To adjust your video system:

Throughout the world there are two main video systems; NTSC and PAL. NTSC stands for National Television System Committee, and is used in parts of North America and Japan. PAL stands for Phase Altering Line and it is used in European countries. The DVR is automatically set to NTSC as SVAT distributes DVRs to North America.

### To change the video system:

1. Select the scroll bar next to "video system" and list will appear.
2. Highlight the video system you would like and press select.
3. Select "apply" to save your changes, the system will restart.

### Video Setup



*Note: Not all countries are listed above, please set this setting to whatever is compatible with your television.*

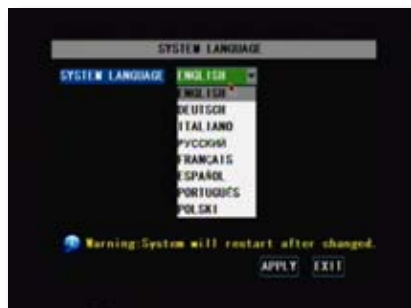
## Language

This DVR allows you to set many different languages. The languages you have to choose from include: English, Dutch, Italian, Russian, French, Spanish, Portuguese and Polish.

### To adjust the language:

1. Select the drop down menu beside "System Language".
2. Highlight the language you would like and press select.
3. Select "apply" to save your settings and exit the menu.
4. The system will restart and open with your set language settings.

### Language Setup (English only)



## System Information

This area allows you to view information about your DVR. The information you can view consists of:

- The device type
- The software version
- The MAC address.
  - The MAC address is a unique identifier that is used to identify your DVR. It is recommended you do not change the MAC address for functional purposes. Changing the MAC address can prevent your DVR from being accessible online

### System Information



## Maintenance

System maintenance allows you to load system default settings, set up your DVR for automatic maintenance, adjust system reboot, manually reboot the system as well as update the system with a USB device.



### **To turn auto maintenance on or off:**

1. Select the scroll bar next to "auto maintain" and list will appear.
2. Highlight whether you would like auto maintain on or off and press select.
3. Select "apply" to save your changes.



### **To adjust auto reboot:**

1. Select the scroll bar next to "auto reboot" and list will appear.
2. Highlight how often you would like the system to reboot (daily, weekly or monthly) and press select.
3. You can also adjust the time you would like the system to reboot. To do this, insert a time in the space next to the drop down list. (Based on a 24 hr clock)
4. Select "apply" to save your changes.



### **To update system:**

A system update can be done if there is new software available for your DVR model. This should only be done if a SVAT representative recommends it.

1. Download the proper upgrade files from [www.SVAT.com](http://www.SVAT.com) and put the files onto your USB flash drive.
2. Insert the USB flash drive into the back of the DVR.
3. Select system update, it should take a few minutes to update everything.
4. Once the update is complete your DVR will restart with the new software on it.



### **To load default**

Loading default settings will restore all settings on your DVR to the default settings except your passwords and time adjustments.

1. Highlight and select "load default".
2. A screen will appear asking you if you are sure you want to restore the DVR to the default settings.
3. If you want to restore default, select "OK", if not, select "cancel".
4. If you choose to restore the settings, the DVR will take a few minutes to load.
5. Once loaded, the factory default settings will be set.



### **To reboot the DVR:**

1. Highlight and select "reboot".
2. A screen will appear asking you if you are sure you would like to reboot the DVR. To reboot, press "OK", if not, select cancel.
3. If you prompted to reboot the DVR, the DVR will shut down and start back up.

## VIDEO SEARCH

*There are three ways to access the search menu for playback:*

1. Pressing the play button on the front panel or the remote of your DVR.
2. Accessing the search menu by right clicking the mouse and selecting "video search".
3. Accessing the main menu and selecting the video search option.
  - Video search allows you to find footage recorded from particular dates and times



*To access and play back footage from a particular date and time:*

1. Select the channel you would like to view recorded footage from **(1)** and press select. Then, highlight and select a date you would like to view footage from **(2)** a keyboard will appear for you to input the date that you would like to see footage from. Highlight and select search **(3)** to open up the search times for that date.
  - Once you have searched for a particular month, you can view times and footage from each day of that month by double clicking on the day in the calendar below **(7)**
  - The days and times that have Motion/Alarm recorded footage stored on them are red in the time schedule **(4)**
  - The days and times that have General Recording stored on them are green
  - If the time is not red or green, it means there was no recording during that time
3. To search for a particular time on a set date, highlight the time you would like to watch **(4)** and press select, a keyboard will appear to input the start time of the footage you would like to view. Click on Playback **(6)** to start viewing from that date and time.
4. If footage was recorded within the selected date and time slot, the footage will begin to play. If nothing was recorded, a screen will appear and read "no record file found". Check your Date/Time and try searching to see what video footage is available.

## File List

This DVR allows you to view the file list for each day that you have recorded footage. The file list allows you to see what type of recording it was (normal, alarm/motion detection), the date and time the footage was recorded, the size of the footage and also the option to backup particular recorded events.

### File List Menu



### To access the file list:

1. Access the search option and select the date input area. A keyboard will appear to input the date you would like to see the recorded footage from.
2. Once the proper date has been entered, highlight and select search to open up the available times for that date. The days and times that have recorded footage stored on them are highlighted red or green. Make sure there are days that have recorded footage on them.
3. Select the date you wish to view the file list from.
4. Select the file list button and a separate menu will appear with a list of all the recordings from that day.
5. If you would like to filter out the types of recordings on this list, select what type of recording you would like to see from the drop down list next to the word "TYPE". You can view alarm, normal or all.
6. The list displays the following information (from left to right.)
  - **CH:** The channel with recorded footage
  - **TIME:** The time range that the footage was recorded
  - **SIZE:** The size of the file – the larger the file the longer the footage
  - **TYPE:** The type of footage that was recorded (Alarm or Normal)
  - **BAK:** Allows you select video clips to backup onto a USB flash drive
7. The buttons along the side of the list, when highlighted and selected do the following:
  - **FIRST:** Brings you to the beginning of the list (oldest footage first)
  - **PREV:** Brings you back a page if not already on the first page
  - **NEXT:** Brings you forward a page
  - **LAST:** Brings you to the last page of recorded footage (newest footage is last)
  - **ALL:** Selects all footage on the page to be backed up
  - **REVERSE:** Inverses the selected and non selected footage
  - **BACKUP:** Prompts back up of the selected clips. For more information on backup see "Backup" (Pg. 26)
  - **Exit:** Exits the file list menu

## Playback Screen



## Playback Through DVR

Once you have selected the footage you would like to view, press select and the footage will automatically play. Upon playing back the recorded footage, options on the bottom of the screen appear for you to manipulate the video. These options are also accessible though the front panel on the DVR as well as on the remote control.

**The options and their functions are as follows: (from left to right on the screen)**

- 1. Rewind:** Pressing this rewinds the footage, the more times you press this the faster the footage will rewind (x2, x4, x8).
- 2. Slow Forward:** Pressing this button slows down the playback footage. The more times you press this, the slower the video will playback.
- 3. Play:** Footage plays automatically when selected from the playback menu, so pressing this button will play the footage if it is paused, rewinding or fast forwarding or stopped. (1/2, 1/4, 1/8 or normal speed)
- 4. Pause/Forward:** Pressing this button once will pause the playback footage. After that, each time you press this button the playback footage will move forward a frame and pause again.
- 5. Fast Forward:** Pressing this fast forwards the footage, the more times you press this the faster the footage will fast forward (x2, x4, x8).
- 6. Mute:** Selecting this option will mute the sound from the playback footage. Sound will only play though if you have an audio supported camera (not included) hooked up to your DVR.
- 7. Volume Adjust:** Adjusting this bar (from low to high) will adjust the volume of the sound from the playback footage. Sound will only play if you have an audio supported camera (not included) hooked up to your DVR.
- 8. Exit:** Selecting this option will exit the playback footage and return you to the playback search or file list option.

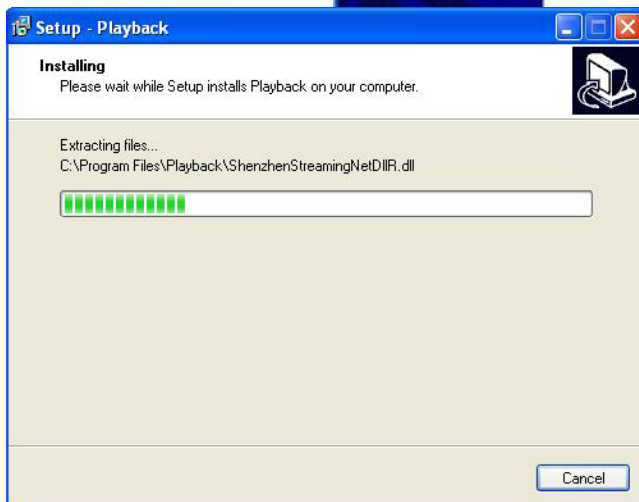
## COMPUTER PLAYBACK

When you backup footage onto a USB device you can view the backed up footage on your computer. Viewing your footage from your computer allows you more options for manipulating the video as well as for backing up footage directly to your computer.

### ***To view footage though your computer:***

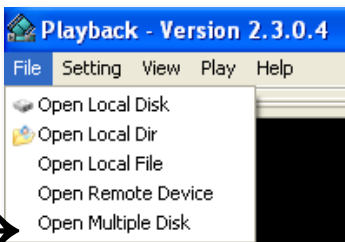
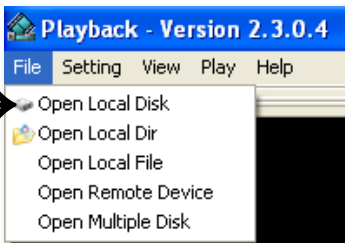
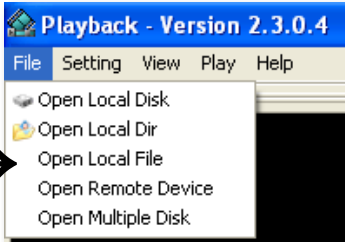
1. Insert included software CD into disk drive and double click to install the playback software.
2. Follow the installation guide until the end.
3. Once everything has been successfully installed, insert USB device into USB port on computer. Make sure USB device has backed up footage on it.
4. Open the playback software you installed.

### Software Installation





Play



## File Viewing

Be sure that the playback software is open on your computer. Instructions differ depending on what files you would like to open and play:

### One Video

1. Select "File" → "Open Local File". Find the USB device file, or any other area where backed up footage would be stored on your computer.
2. Make sure to view .264 Files.
3. Select the file you would like to view and select "open".
4. Once you have selected open, the video will NOT play automatically. You must prompt the video to play.
5. To view the footage you must select "play", from the top menu and then scroll down and select "Play" from there. Once "play" is selected, the video will begin to play.

### An Entire Folder

1. Select "File" → "Open Local Disk". Find the USB device file.
2. Select the file you would like to view and select "open".
3. Once you have selected open, the video does NOT play automatically. You must select "play".
4. To view the footage you must select "play". To do this open the top menu and then scroll down and select "play". Once "play" is selected, the video will begin to play.

### Multiple Folders

1. Select "file" → "Open Multiple Disk", then select the folders you would like to view and select "OK".
3. Once you have selected open, the video does NOT play automatically. You must select "play".
4. To view the footage you must select "play". To do this open the top menu and then scroll down and select "play". Once "play" is selected, the video will begin to play.

**Note:** "Open Local Dir" works the same as Open Local Disk and Open Remote Device only works if the device is directly connected to computer, which is not supported on this device.

## Software Functions

The software has many functions. The drop down menus allow you to adjust the video, the file menu allows you to open video files, and settings allows you to adjust certain settings in the software.

**The video functions from the play menu are as follows:**

**Play:**

Plays the footage

**Pause:**

Pauses the footage

**Stop:**

Stops the footage

**Backward Frame:**

Moves the video back a frame

**Forward Frame:**

Moves the video forward a frame

**Decrease Rate:**

Slows down video

**Increase Rate:**

Moves the video faster

**Next Hour:**

Moves video forward an hour (if video is over an hour long)

**All Video:**

This option does not apply to your DVR

**Capture Picture:**

This option takes a photo of the screen. When you select this option, you will be prompted to create a file name and find a save path for the photo. Once you do, you select "save" and the photo will be taken and saved under your desired name and location

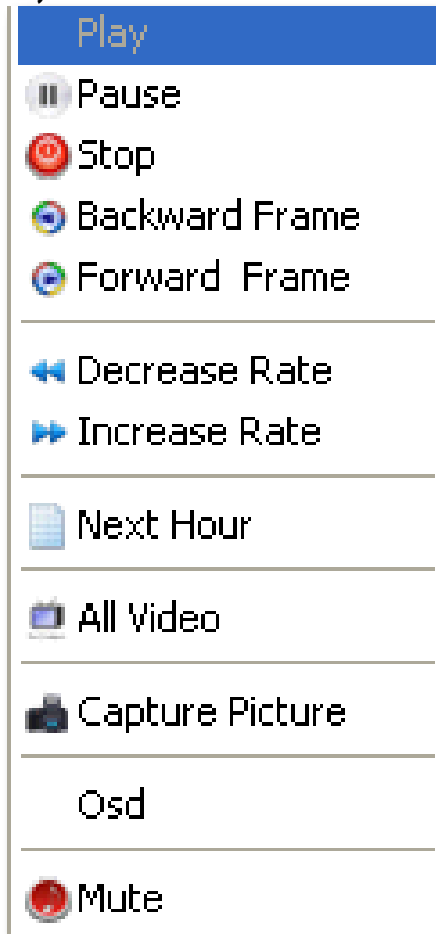
**OSD:**

OSD stands for on-screen display, checking and/or un-checking this selection does not make a difference to the video

**Mute:**

Selecting this would mute the sound if you were viewing footage from an audio supported camera (not included)

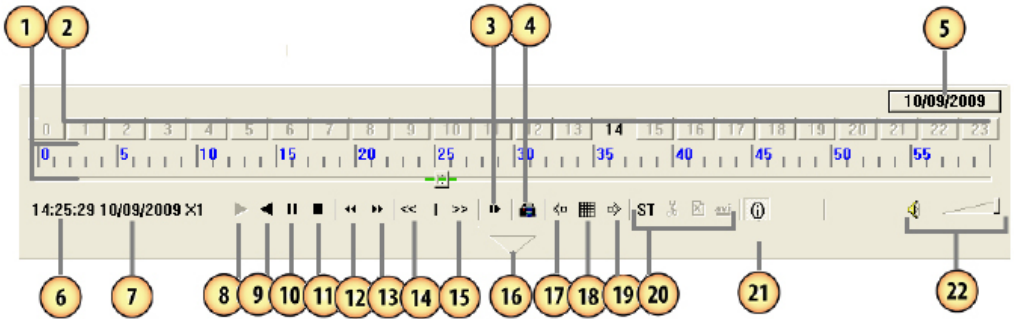
### Play Menu



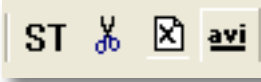
## Bottom Playback Functions

If you select the bottom bar from on the playback screen, it will expand to give you playback options as well.

*The video functions from the bottom bar are as follows:*



1. **Minute Bar:** Displays the minutes of when the footage was recorded and for how long. You can also adjust the small box to move to particular parts of the footage
2. **Hour Bar:** The selected button displays the hour the footage was recorded. (in this photo it is 14:00 or 2:00pm)
3. **Hour Forward:** Pressing this button moves the footage forward an hour
4. **Capture Picture:** This option takes a photo of the screen. When you select this option, you will be prompted to create a file name and find a save path for the photo. Once you do, you select save and the photo will be taken and saved under the desired name and location
5. **Date:** This displays the date that the footage was recorded; pressing it will reveal a calendar. The days that video was recorded and backed up (on device) will be highlighted. Selecting a highlighted day will prompt playback of that day's footage
6. **Time:** Displays the time that the footage was recorded
7. **Date and Speed:** Displays the date that the footage was recorded as well as the playback, fast forward and rewind speeds. (1x, 2x, 4x, 8x, 16x)
8. **Play:** Plays the footage
9. **Backwards:** Plays the video backwards in normal time
10. **Pause:** Pauses the footage
11. **Stop:** Stops the footage
12. **Backward Frame:** Moves the video back a frame
13. **Forward Frame:** Moves the video forward a frame
14. **Rewind:** Rewinds footage. Each time you press this icon, the faster the footage will rewind (2x, 4x, 8x, 16x)
15. **Fast Forward:** Fast forwards the footage, each time you press this icon, the faster the footage will fast forward (2x, 4x, 8x, 16x). To go back to normal viewing select the middle bar (between rewind and fast forward)
16. **Max/Min:** Pressing this will reveal and hide the bottom icon bar
17. **Decrease Screen:** Pressing this will decrease the amount of screens seen on the viewing window
18. **All:** Pressing this will reveal all cameras with recorded footage that are playing back
19. **Increase Screen:** Pressing this will increase the number of screens seen on the viewing screen
20. **ST:** This stands for start operation; this allows you to save, delete or change the video for sections of recorded footage. (Directions on Pg 49)
21. **(i)/OSD:** OSD stands for on-screen display, checking and/or un-checking this selection does not make a difference to the video
22. **Volume Control:** If you have an audio supported camera (not included), clicking and dragging the square along the bar will turn the volume of the playback footage up and down. Clicking on the speaker icon will mute/turn on the sound



### To save a section of video:

1. Move the cursor (on the green bar) to the section of footage you would like to save.
2. Select the ST icon. A blue bar will appear where you want the video to start saving as well as make the icons next to the ST icon become usable.
3. To cut footage and save it select the scissor icon next to ST and a time range screen should appear. Type in the year, month, day and time you would like to start and stop saving the footage, then select "OK." A Browse screen will appear. Choose where you would like the footage to save and select "OK". Once everything has saved properly a screen will appear and notify you. To view the footage, use the file opening instructions with that saved footage.
4. To delete footage from a file select the x icon next to the scissors and a time range screen should appear. Type in the year, month, day and time you would like to start and stop the footage deletion, then select "OK". Once everything has saved properly a screen will appear and notify you.
5. To convert the .264 file to an .avi file select the avi icon next to the x and a time range screen should appear. Type in the year, month, day and time you would like to start and stop the footage deletion, then select "OK". A Browse screen will appear. Choose where you would like the avi footage to save and select "OK". Once everything has saved properly a screen will appear and notify you. To view the footage, open it with an .avi compatible video player.

## Setting Menu (FOR ADVANCED USERS ONLY)

The settings menu allows you to change functioning of the software. Within this menu option you can adjust the parameters, find and play specific footage to play (if you have multiple type of footage playing), select which audio channel will play, adjust the order of play channels, as well as adjust the video quality.

### Parameter Settings:

Setting the parameters is for advanced users. It involves establishing parameters within the software. Unless you are aware of how to adjust these parameters, it is best to leave them at the default levels.

Audio filtrate is for audio supported cameras (not included). It deals with audio in the footage being filtered for outside noise; this device does not allow the filtration levels to be adjusted, so it is best to leave the audio filtrate off.

### Video Play Settings:

This DVR does not support multiple bars of video so adjusting this function will not make a difference in your footage.

### Audio Channel Settings:

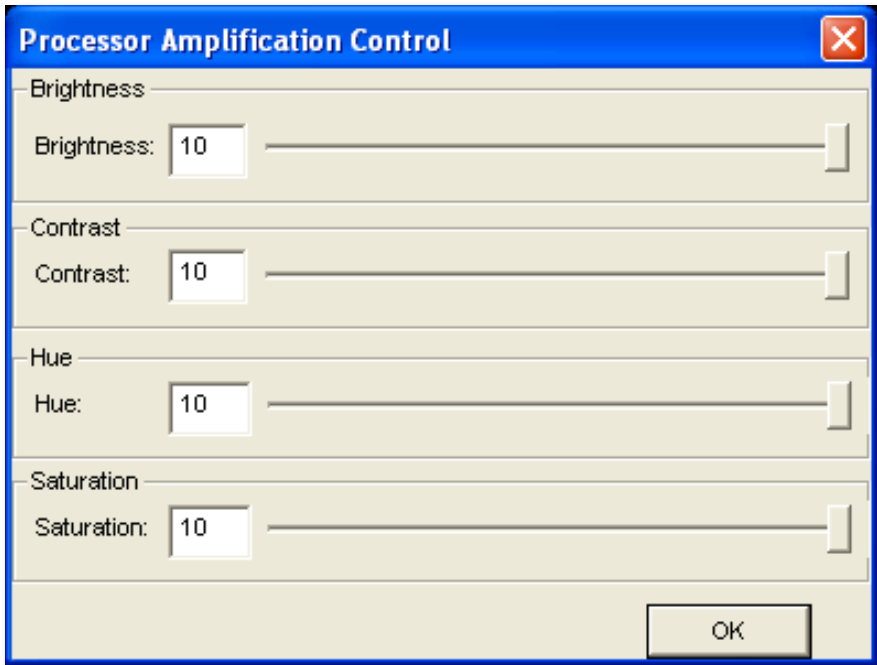
This DVR does not support multiple bars of audio (only one audio channel) so adjusting this function will not make a difference in your footage.

### Video channel Split Setting:

This DVR does not support video channel splitting, so adjusting this function will not make a difference in your footage.

**Processor Amplification Control**

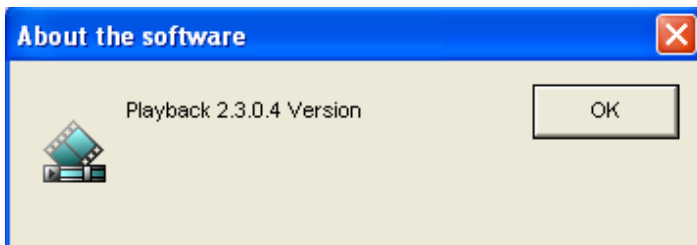
This area allows you to adjust the Brightness, Contrast, Hue and Saturation of the playback video.

**To adjust the video settings:**

1. Open up "Processor Amplification Control", under the settings menu.
2. Move the bar along the line to make the Brightness, Contrast, Hue and Saturation settings higher or lower.
3. When the settings are adjusted to your liking, select OK.

**Help Menu**

The help menu option allows you to view what the software you are using is called as well as see which version you are using. If more updated versions are available, they can be downloaded from [www.SVAT.com](http://www.SVAT.com)



## REQUIREMENTS

### *You will need to have:*

- The DVR connected to a router
- The router connected to the Internet
- A PC or laptop that is connected to the same router as the DVR. The PC can be connected by a wired or wireless connection
- Internet Explorer 6.0 or higher (to check your version of Internet Explorer open I.E. In the top Menu bar select "Help" and then select "About Internet Explorer". The version of I.E. will be displayed.)
- A genuine and fully updated version of Windows XP, Vista or newer



*Note: The computer and DVR need to be connected to the same router for initial setup. A computer will not always be necessary at the location to view the DVR.*

## CONNECTING DVR TO A ROUTER

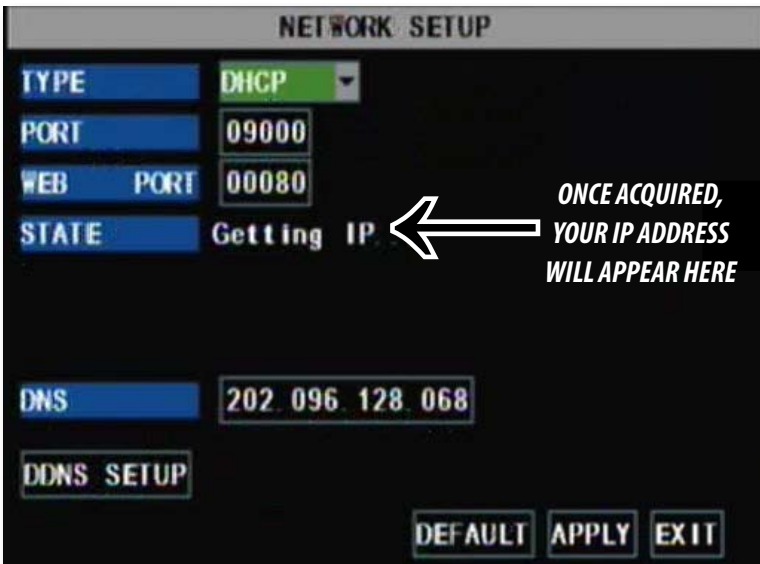
1. Power off the DVR by removing the power cable from the back of the DVR.
2. Connect the included network cable to the back of the DVR in the Ethernet port (LAN).
3. Connect the other end of the network cable to an available port on the router.
4. Power on the DVR by reconnecting the power cable to the back of the DVR.



## Finding your DVR's IP Address

By default, the DVR IP mode is set to DHCP. This means the DVR will automatically retrieve an IP address from the router that it is connected to. Unless your network requires a static IP address leave the DVR IP mode set as DHCP.

1. Press "Menu."
2. Enter password if prompted. The default password is **123456**.
3. Select "NETWORK SETUP"
4. Make sure the "IP Mode" is set to DHCP. This setting is acceptable for most users.
  - If the IP mode is not set to DHCP, use the drop down list next to "type" and change the type so that it is set to DHCP. You must hit "apply" and exit for the DVR to restart and retrieve an IP address
5. Write down your IP address, port and web port. This information will be used in the next few steps to view the DVR on your computer as well viewing the DVR over the Internet.



**Note:** If your router does not support DHCP, contact your network administrator to supply you with the proper IP information. If the DVR needs to store PPPoE (DSL/ADSL) settings contact your ISP (Internet Service Provider) for the proper IP address settings.

## Preparing Your Computer for Viewing the DVR:

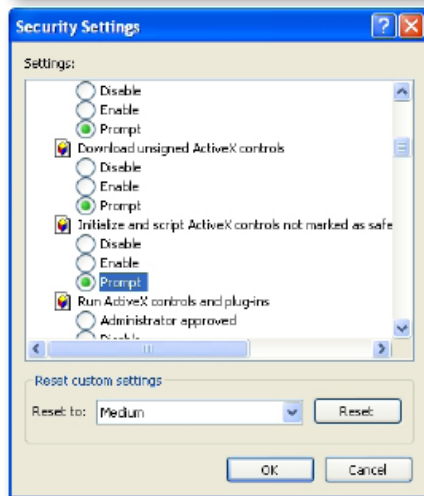
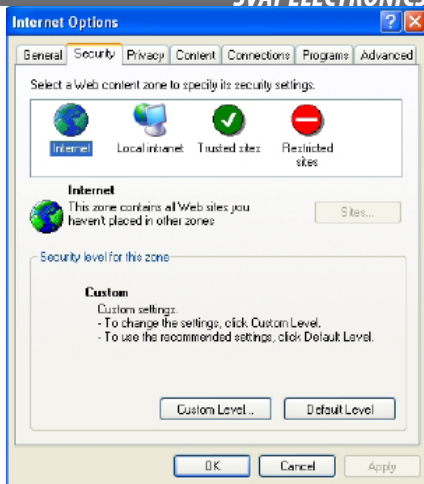
Every computer that is accessing the DVR will need to be configured to download and run ActiveX controls. This change only needs to be made one time on the computer that is accessing the DVR. This can be done by following either of the two methods below.

## Method 1:

1. Open up Internet Explorer.
2. Click on TOOLS.
3. Click on INTERNET OPTIONS.
4. Click on the SECURITY tab then the CUSTOM LEVEL button.
5. Change the ActiveX settings listed below.
  - Download signed ActiveX controls: PROMPT or ENABLED
  - Download unsigned ActiveX controls: PROMPT
  - Initialize and script ActiveX controls not marked as safe: PROMPT
  - Run ActiveX controls and plug-ins: ENABLE
  - Script ActiveX controls marked as safe for scripting: ENABLE

### ***If this is an option:***

- Allow automatic prompting for file and code downloads: ENABLE
6. Click OK.
  7. Click "apply".
  8. Close the options window.



***This method needs to be done on every computer you wish to view your DVR from.***



## Method 2:

Add the DVR's IP address to the Trusted Sites in Internet Explorer.

1. Open up Internet Explorer.
2. Click on TOOLS.
3. Click on INTERNET OPTIONS.
4. Click on the SECURITY Tab.
5. Click on TRUSTED SITES.
6. Click on the SITES button.
7. Type in the IP address of the DVR in the following format: `http://192.168.0.108` and click ADD.
8. If "Require server verification (https:) for all sites in this zone" is selected you will need to **uncheck** the selection box.

*The IP address used in the example above is for internal network viewing. If you are trying to access the DVR from a remote location you will add the "External IP Address" to the trusted sites list. See Finding your External IP Address.*

9. Change the default settings for the TRUSTED SITES zone to low. Click on DEFAULT LEVEL and change the security level of the zone to "Low". This can be done by running the slider to the bottom. This will allow ActiveX controls from the DVR to be downloaded and the DVR to be viewed on the computer.
10. Click "apply".
11. Click "OK".



## Viewing Your DVR on Your Computer

Now that the computer is prepared to install the necessary ActiveX changes listed above you are ready to start viewing the DVR using your computer. Using Internet Explorer, type the IP address of the DVR into the address bar using the following format: `http://192.168.0.108` and press ENTER.



If the computer and the DVR are connected to the same router you can use the internal IP address to view the DVR. If the computer is not connected to the same router and is at a remote location you will need to use the external IP address for the DVR to view the DVR from that computer.

## Log in to the DVR (Using Internet Explorer):

By default the DVR will require a user to input a password before being able to view the DVR online. The default password for the web interface of the DVR is: **123456**



## Installing the ActiveX controls:

There will be a yellow information bar that pops up below the address bar in Internet Explorer. Click on the yellow information bar and then select "Install This Add-on for All Users on This Computer...". Please be patient as the installation process can take 1-2 minutes.



If your ActiveX settings are set correctly you will see the following dialogue box.



Click "RUN".

Once everything has installed and loaded, you will see the web player and the connected cameras.

## VIEWING YOUR DVR OUTSIDE OF YOUR NETWORK

Now that you have successfully viewed your DVR and cameras from a computer connected to the same router it is time to set up your router to view the DVR while at a remote location. This process is called "Port Forwarding" and you can find detailed instructions on how to complete the required steps at:

### Option 1

[www.SVAT.com/network](http://www.SVAT.com/network)

### Option 2

[www.portforward.com](http://www.portforward.com)

### BEFORE YOU BEGIN PORT FORWARDING YOU WILL NEED:

- The DVR connected to a router
- Your computer hooked up to the same network/router as the DVR
- The brand and model number of your router (this is usually located on the back or bottom of the router)
- Internet Explorer 6.0 or higher
- The Internal IP address of your DVR
- The port and web port numbers that the DVR is programmed to run off of. To view what ports are being used with your DVR see the network setup menu on your DVR.

**Note:** *Port forwarding is required if you want to view the DVR from a computer that is not connected to the same router.*



## OPTION 1: (recommended)

This option gives you an audio enabled video that has step-by-step instructions on how to port forward your DVR for your specific router.

1. Open up your web browser and go to:  
**[www.SVAT.com/network](http://www.SVAT.com/network)**
2. Once the site has loaded you will see a list with photos of different SVAT DVR models, select the CV301-8CH.
2. You will then see a list with photos of different types of routers. Select the router most similar to yours.
3. Once selected, another program will appear in a separate screen, select the get started icon in the bottom left corner.
4. Make sure the volume is at a reasonable listening level on your computer and follow the instructions given in the appear window.
5. Once you have completed port forwarding, see TESTING PORT FORWARDING on Pg 59.

### Select your DVR (CV301-8CH)



### Select your router model



### Follow instructional video



**PLEASE MAKE SURE TO FORWARD PORT 80 AND 9000 FOR ONLINE VIEWING. IF YOU WOULD LIKE TO USE MOBILE VIEWING, BE SURE TO FORWARD PORT 1024 AS WELL.**

## OPTION 2:

1. Open up your web browser and go to:  
**www.portforward.com**
2. Once the site has loaded, scroll down to the large list of routers.
3. Find the type of router you have and select it.
  - If you cannot find your exact router, select one that is similar to your router or made by the same company that made your router
4. Once you select a router an advertisement will appear – select the “click here to skip this advertisement” text in the top right corner.
5. On the next page there is a list of programs that require port forwarding, try to find instructions on port forwarding a DVR, if you cannot find any you can select any type of system as the instructions for port forwarding are similar for all products.
6. Follow the step by step instructions for your router on www.portforward.com. Be sure to use the set ports on the DVR (Default = Port 80 and 9000).
  - The instructions will walk you through the port forwarding process from start to finish. Your router may require a user name and password, if you do not know this you may have to contact your Internet service provider.
7. Once you have completed port forwarding, see TESTING PORT FORWARDING on Pg 59.

Go to [www.portforward.com](http://www.portforward.com)



### Port forward Home page



### Select a Router most similar to yours from list



**NOTE:** *www.portforward.com is not affiliated with SVAT.*

**PLEASE MAKE SURE TO FORWARD PORTS 80 AND 9000 FOR ONLINE VIEWING. IF YOU WOULD LIKE TO USE MOBILE VIEWING, BE SURE TO FORWARD PORT 1024 AS WELL.**

## TESTING PORT FORWARDING

*If you would like to see if your port forwarding worked, follow these steps :*

1. Open a web browser and type in [www.whatsmyip.org](http://www.whatsmyip.org).
2. Your External IP address will be listed on the top center of the screen, make sure to write it down. This is the address that you can use when not at home to connect onto your DVR.
3. Open another web browser.
4. Type in [www.canyouseeme.org](http://www.canyouseeme.org). This site also allows you to see your external IP address.
5. You will see your external IP address and underneath it you will see a box saying "what port?"
6. In the box, put the port numbers you set the DVR to. The default ports are 80 and 9000 (you have to forward both, please make sure you check both ports.)
7. Click the check button and scroll down.
8. You will see a message that tells you that it can successfully see your port. This means you have successfully port forwarded.
9. If you receive an error message please view "IF YOU CANNOT CONNECT" on Pg. 60. If you're still having trouble you can always contact SVAT's 24/7 support team.

### Write down your external IP address



### Type in your the port you forwarded (Default port is 80)



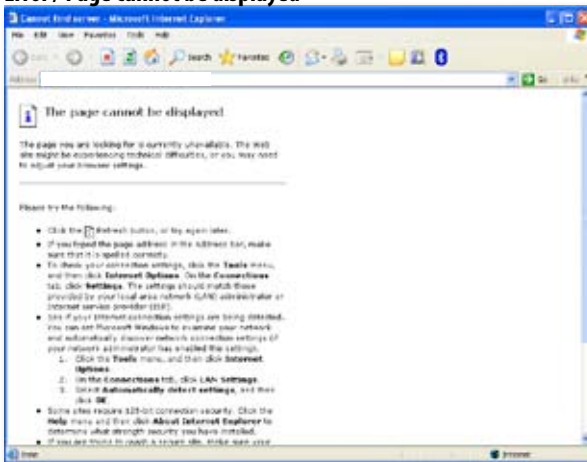
**NOTE:** [www.whatsmyip.org](http://www.whatsmyip.org) and [www.canyouseeme.org](http://www.canyouseeme.org) are not affiliated with SVAT in any way.

## IF YOU CANNOT CONNECT

If the remote viewing does NOT connect it could be due to one of the following issues:

- Make sure the browser is Internet Explorer 6.0 or higher and is on a Windows PC
- Make sure you forwarded both port 80 AND 9000 for TCP and UDP
- Make sure you properly installed the controls (selected the yellow pop-up bar and ran all controls)
- Check all your network connections and go through the above steps again to make sure a configuration error was not made. You may have to configure PPPoE settings to match the settings provided to you by your Internet Service Provider (ISP). Consult your ISP for more information on your PPPoE settings
- Port forwarding is not set up correctly. Re-review the instructions on [www.SVAT.com/network](http://www.SVAT.com/network) and/or [www.portforward.com](http://www.portforward.com) to check if you set port forwarding up correctly
- A pop-up blocker is preventing the ActiveX controls from prompting you to install
- Your router is blocking your computer from using the external IP address from the same network as the DVR. Try connecting to the External IP Address from a computer that is not connected to the same network
- Port 80 is being blocked by your ISP (Internet Service Provider). Try changing the HTTP port to 2000. Port forwarding will need to be setup for the new port
- A DSL modem is preventing the connection because it is on a different sub-network. Contact your Internet service provider to assist with bridging the modem and router together

### Error / Page cannot be displayed



**Note:** If you are having any problems with port forwarding, you can always contact SVAT'S 24/7 technical support.

**Note:** SVAT technical support cannot troubleshoot modems, since changing these settings can potentially render your modem inoperable. Bridging or any other modifications to the modem will need to be completed by the Internet service provider.

## TO VIEW ONLINE SOFTWARE USING EXTERNAL IP ADDRESS

1. Open your Internet Explorer and type in [www.whatsmyip.org](http://www.whatsmyip.org) and press enter. This will direct you to a website that lists your external IP address on the top of the page. Write down your external IP address.
2. Open another Internet Explorer window and type in your external IP address, followed by the port you forwarded for your DVR in the following format. <http://74.123.3.34:80>.
3. Follow the login screen for your DVR. The default password is **123456**.
4. Install any ActiveX controls or software settings that may appear.
5. Once everything is properly installed, you will be viewing the online software. (Online software instructions can be found on Pg 65).

## DDNS (Dynamic DNS)

Instead of having to type in the IP address to access the DVR online you can use DDNS to create an easy to remember website name. The DVR has a DDNS provider web address built into it. The following instructions are for DYNDNS.org. DYNDNS.org is not owned nor operated by SVAT and therefore support for DYNDNS.org will be done through their website.

### To Configure the DVR to Work with DDNS:

1. Press Menu on the DVR and select "NETWORK".
2. Highlight and select "DDNS setup".
3. In the drop down menu next to "DDNS", highlight and select to "ON".
4. In the drop down menu next to "Server", highlight and select "dyndns".
5. Fill out the host name, user name and password that you use for the DynDNS account you will create in the following pages.

### Fill out DDNS setup with DYNDNS account information

The screenshot shows the DDNS SETUP configuration screen. The title bar reads "DDNS SETUP". Below it, there are several configuration options:

- DDNS:** A dropdown menu currently set to "ON".
- SERVER:** A dropdown menu currently set to "dyndns".
- HOST NAME:** A text input field that is currently highlighted in green.
- USERNAME:** An empty text input field.
- PASSWORD:** An empty text input field.

At the bottom of the screen, there are three buttons: "DEFAULT", "APPLY", and "EXIT".



## DynDNS SETUP

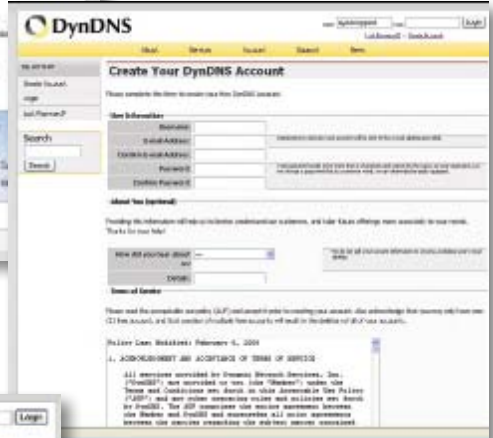
### The following instructions are for DYNDNS.org setup

1. On a computer that is connected to the same router as the DVR, open a web browser and type www.dyndns.org in the address bar.
2. Create a new account by clicking the "Create Account" link in the top right hand corner of the site.
3. Enter your preferred user name, email address, and password.
4. Optional information can be left blank, unless you would like to enter it.
5. Read and agree to the acceptable use policy by checking the box and click "Create Account".
6. An account verification email will be sent to the email address you supplied. You will need to follow the instructions listed on DNYNDS.org in order to complete the account activation.
  - The next page has information about creating your host name

### DynDNS home page



### DynDNS Account Setup



### DynDNS Account Confirmation



**Note:**  
The DynDNS sites are not owned nor operated by SVAT and therefore support for these services will be done through their web site.

## LOG INTO THE ACCOUNT AND SETUP A DDNS HOST

### To set up a DynDNS name for your DVR:

1. Enter the DYNDNS.org user name and password you created and click login.
2. Click on the "Services" button located on the menu bar.
3. Click on the "Dynamic DNS" link.
4. Click on the "Get Started" link located on right side of the screen.
5. Type in a desired host name. We recommend you use your name, family name or your business' name, as long as it is easy to remember.
6. Choose a domain name from the drop down menu. We recommend using dyndns.org.
7. In the IP address field, type in the external IP address that your DVR is connected to.
8. Leave all of the other options as they are, and click "Create New Host".
9. Follow on screen instructions to activate and view your free DDNS host name.
10. Be sure to input the proper account information on your DVR's DDNS setup menu before viewing.

### Select the Services Button



### Select Dynamic DNS



### Select "Get Started"



### Insert account info



## TO VIEW DVR THROUGH HOST NAME

1. Ensure that all your DYNDNS account information is entered into your DVR's DDNS setup screen.
2. Open Internet Explorer and type in your DVR's host name that you created on your DYNDNS account.
3. You will be prompted for a Password.

**Default Password: 123456**

4. Click OK and the DVR software and footage will appear.

*Note: If using a port other than 80, the port must be specified after your host name*

## LOGGING INTO SOFTWARE

If you created a DYNDNS account, type in your account's host name in Internet Explorer. If you didn't create an account you can use your external IP address in Internet Explorer (if on a different computer) or your DVR's internal IP address in Internet Explorer (if on a computer connected to the same router).

Before you view the online software you are asked to login with a password, you can use the admin or user password and the footage will appear.

The login screen also has the option to adjust which connection you are viewing the software with (internet or LAN). Leave this option set to Internet.

**Default Password:123456**

Once the password is inserted, select login and the DVR software and footage will appear.

**USER LOGIN**

IP ADDRESS: 76.62.21.22

MEDIA PORT: 9000

PASSWORD:

NETWORK: INTERNET

LOGIN RESET

*This is what the online viewing software will look like in live view:*



*Just like the DVR menu, submenus have certain functions that have the same meaning:*

- **Next:** Allows you to adjust settings for cameras 5-8
- **Default:** To restore all settings to the default settings select the "Default" button on the bottom of the screen
- **Apply:** To save changes select "apply" at the bottom of the screen
- **Exit:** To exit the menu, select "exit" at the bottom of the screen

## Live Mode

The fist tab along the top of the screen for the online viewing allows you to view the DVR in live mode. From this mode the buttons along the side and their functions are as follows:

### 1. PTZ Camera Controls:

Selecting this function opens up PTZ control menu. For more information see "PTZ options" on Pg 67

### 2. Cruise Setup:

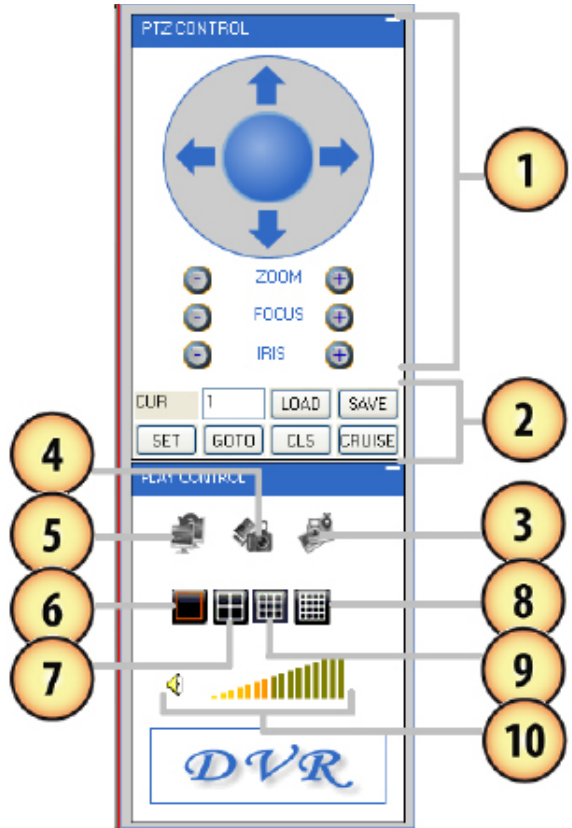
This function allows you to setup directions for the PTZ to follow, the PTZ camera will cruise through your set positions and times. Not all PTZ cameras have this function. For more information see "PTZ options" on Pg 67

### 3. Record:

Pressing this button prompts the DVR to record footage directly onto your computer. To stop the recording, press the record button again. The recorded footage will automatically save to the selected location on your computer. To select a location see "Settings" information on Pg 74

### 4. Capture:

Pressing this button prompts the DVR to take a snapshot of the screen and automatically save the picture to the selected location on your computer. To select a location see "Settings" on Pg 74



**5. Close/Open Window:** Selecting this icon closes all the windows in live mode revealing a blank screen. Click this icon again to open all windows back up

**6. Single Screen View:** Selecting this will open up a full screen view of the screen you have highlighted

**7. Quad Screen View:** Selecting this will open a quad screen view of all 4 cameras.

**8. 8 Screen View:** The software is adaptable for other DVRs, selecting this would show 9 screens for an 8 channel DVR

**9. 16 Channel View:** The software is adaptable for other DVRs, selecting this would show 16 screens for a 16 channel DVR

**10. Volume Control:** This controls the volume if an audio supported camera or microphone is connected (not included). Pointing and dragging the mouse across the volume bars turns the volume up and down. To mute the sound, click the speaker icon next to the volume bars

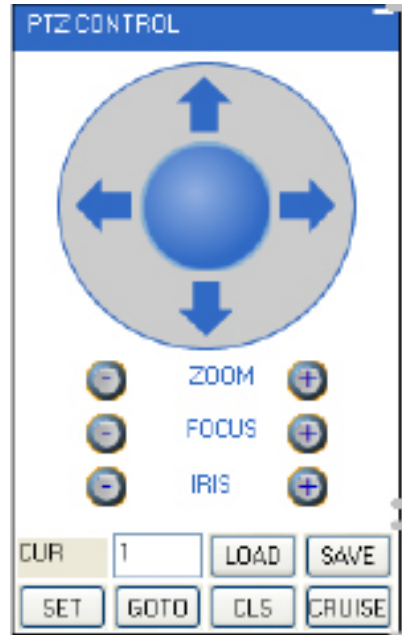
## PTZ OPTIONS

*The controls for the PTZ camera are as follows:*

- Zoom:** Pressing the + zooms in and pressing the – zooms out
- Focus:** Pressing the + focuses the picture and pressing the – takes the focus away, many PTZ cameras do this automatically
- Iris:** Pressing the + lets in more light and pressing the – takes light out of the picture, many PTZ cameras do this automatically
- Directional Keys:** Clicking on the directional arrows moves the camera around

**To set up cruise:**

1. Using Set, or manually typing the number in, select the channel that the PTZ camera is hooked up to in the type box.
2. Move the camera to the places you would like the PTZ camera to cruise to and click the load button at each desired position.
3. If you select the “cls” button, the set positions will be cleared.
4. Click save once you have set all positions you would like to cruise to.
5. To start the PTZ cruise select “cruise”, to stop the PTZ cruise select “cruise” again.



## OTHER MOUSE OPTIONS

*When you right click the mouse a separate menu appears and allows you to perform the following functions:*

- **Open or close individual windows:** Click on the screen you would like to open/close. It should have a red box around it then right click your mouse and select open/close window
- **You can also open/close all screens:** Right click and select from menu
- **Start recording:** Right click and select from menu
- **Stop recording:** Right click and select from menu



## PLAYBACK

This tab allows you to search, view and backup previously recorded footage that is stored on your DVR's HDD. You can also narrow down your search by type of footage and what camera it was recorded from.



### To search through footage:

1. Select the date you would like to view the footage from on the calendar by double clicking on the particular date. If the date has available footage, it will be in bold.
2. Make sure the menu is not being accessed, if the DVR's menu is being accessed by another user, you will be unable to retrieve or view footage.
3. It should take a few moments to load the available footage. The footage will appear in the space below the calendar.
4. The list will display the footage in the following format:
  - The time the footage was recorded; the channel the footage was recorded on, the size of the footage
5. Select the footage you would like to view from this list and double click it to play it.
6. If you would like to refresh to the newest footage being recorded, select refresh. The most recently recorded footage will appear at the bottom of the list.







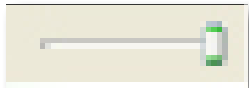


### To narrow down footage to search through:

1. Using the scroll lists located under the calendar, select the camera and type of footage you would like to view.
2. Select "search" and only the type of footage from the camera selected will be displayed in the list below.

## Playing Back Footage:

When you prompt video to play, it may take a few minutes to load, then the footage will begin playing automatically. The bottom of the screen will have the playback options.

*The playback options (from left to right) are as follows:*

	<b>Pause/Play:</b>	Pressing this pauses playback. If the video is currently paused, pressing this button again will prompt the video to begin playing.
	<b>Stop:</b>	Pressing this will stop the footage from playing and a blank screen will appear. Pressing play after you have stopped the footage will play the selected footage from the beginning.
	<b>F.F.:</b>	Fast forward. Selecting this option fast forwards through the footage. The more times you select this, the faster the footage will fast forward (2x, 4x, 8x, 16x).
	<b>Slow:</b>	Selecting this option slows the playback footage down. The more times you select this, the slower the footage will play (2x, 4x, 8x, 16x).
	<b>Next Frame:</b>	Selecting this moves the footage forward a single frame.
	<b>264 to AVI:</b>	Selecting this will convert previously backed up or recorded footage from a .264 file to an AVI file. This will make the footage playable on more video player devices. <ul style="list-style-type: none"> <li>• When selecting this you will be asked to select the video you want converted as well as where you want the video converted to (source and destination file)</li> <li>• Once you have selected the video and save folder, select "convert"</li> <li>• It should take a few moments to convert the footage. Once the footage is converted an alert will appear and notify you that the conversion is complete</li> </ul>
	<b>Volume:</b>	If you have an audio supported camera connected, clicking and dragging this will turn the volume of the playback footage up and down.
	<b>Backup:</b>	Pressing this will backup the selected video to your computer. The backed up footage will automatically save to the selected location on your computer. To select a location see "SETTINGS" screen information on Pg 74.
	<b>Replay:</b>	Selecting this will replay the last footage played.



## SETUP

This tab allows you to go through particular settings and make adjustments to the DVR. The menu options you can adjust include:

- Record
- Alarm
- PTZ
- Network
- Setting
- Host Info

Each function works much like the menu option on the DVR.

## Record Mode

The DVR allows you to choose whether it always records, or if it records based on a schedule that you set up yourself.

### *To program your DVR to always record:*

1. Select the drop down menu beside "Record Mode".
2. Highlight the word "Power Up" and press select.
3. Select "apply" to save settings.

### *To set your DVR for schedule record:*

1. Select the drop down menu beside "Record Mode".
2. Highlight the words "TIMER" and press select.
3. Select "apply" to save settings.

### *To set your record schedule:*

This DVR allows you to set different schedules for each channel as well as set what days the DVR will follow the set schedule. You can also select if it constantly records or if it only records when motion or the alarm is detected.

1. From the record setup menu on your DVR, make sure your DVR is set to "TIMER RECORD".
2. Select the word "SCHEDULE" beside the record mode drop down list.
3. This will bring you to a separate menu.
4. Select the drop down list beside the word "CHANNEL" and highlight the camera you would like to set a schedule for.

### Record Options



### To change the schedule:

- At the bottom of the schedule area, select the type of recording you would like to insert at particular days and times and press select.
  - (Red):** Alarm record: Records when motion or alarm is detected
  - (Green):** General Record: Constantly records
  - (White):** No Record
- In the schedule area, click on the day and time you would like to adjust (to record, alarm record or no record). The time slot will fill with the corresponding color.
- Repeat for all wanted times and days in the week for each desired camera (or all cameras).
- Once you have set all schedules to the cameras, days, times and settings select "apply" to save settings.

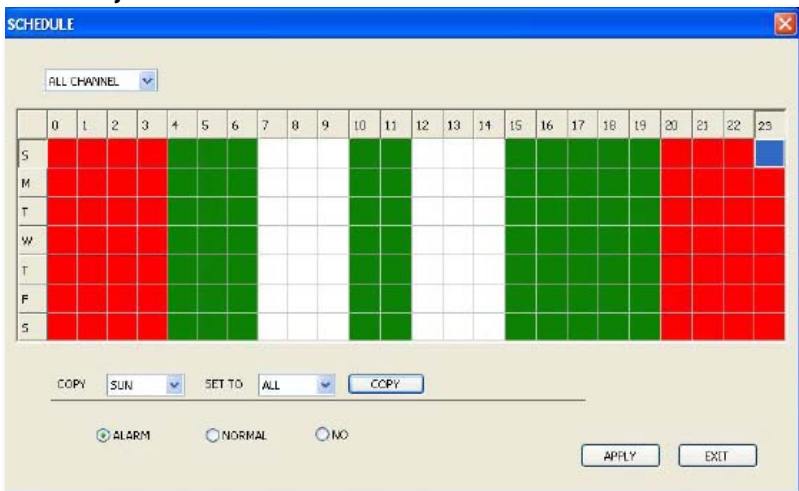
## Schedule Copy Function

Selecting the COPY button will copy one day's schedule and paste it into other days that you specify. This is useful if you customize a schedule for a particular day and would like to apply that same schedule to another day.

### To copy one day's schedule to another day:

- Select the drop down menu beside the word "Copy".
- Highlight the day you want copied.
- Select the drop down menu beside the word "Set to".
- Highlight the day you want the copied schedule to be pasted into.
- Press the "copy" button and the copied schedule will appear in the selected days.
- Once you have completed all desired schedules, select "apply" to save settings and "exit" to exit back to record setup menu.

### Schedule adjust



## Alarm Setup

The alarm menu on the online software allows you to adjust for motion detection, motion detection area and motion detection sensitivity.

## Motion Detection

This menu option allows you adjust the motion detection settings for each individual camera. The settings you can adjust include turning motion on or off, adjusting the sensitivity and selecting the motion detection area.

### *To change the status of motion detection for each camera:*

1. Select the status drop down list under to the camera you would like to turn the motion detection on/off.
2. Select on or off from the drop down list to turn the motion detection on or off for that camera.
3. Repeat for all desired cameras.
4. Select "apply" to save the changes.

### *To change the sensitivity of motion detection for each camera:*

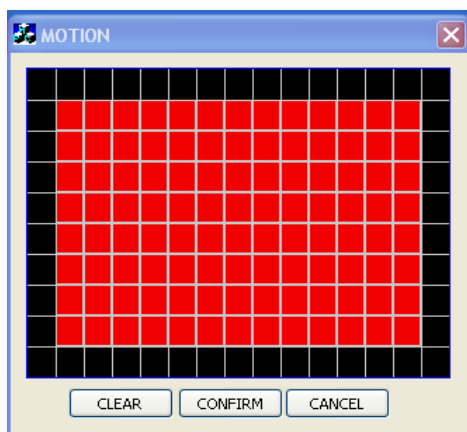
1. Select the sensitivity drop down list under the camera you would like to adjust the motion detection sensitivity.
2. Select 1 to 4 from the drop down list to adjust the sensitivity. 1 is the lowest sensitivity and 4 is the highest sensitivity.
3. Adjust the sensitivity for all desired cameras.
4. Select "apply" to save the changes.

## MD Area

This setting allows you to adjust particular areas of each camera where motion will and will not be detected. This is good if you have a camera pointed to something that is always moving, such as a busy road. This way the DVR only records motion that is out of the ordinary, thus saving you HDD space.

### *To adjust the MD area*

1. Select the setup option under to the camera you would like to adjust the motion detection area and a separate screen will appear with a red mask on the picture and a grid.
2. The screen is fully red; this is because the DVR is automatically set to detect motion throughout the whole screen.
3. To adjust the MD area for the desired cameras, highlight the squares where you do NOT want motion detected and press select. When the area is no longer shaded in red, the area will no longer detect motion.
4. Once motion detection areas have been determined, exit the screen by right clicking or pressing "esc" and select "apply", to save settings.



## PTZ Setup

PTZ setup allows you to input information for the connected PTZ camera. (PTZ cameras not included). The information must be setup according to the PTZ camera so that the DVR and online software works with your PTZ camera and all its functions.

### To input the PTZ information:

1. Find which camera channel the PTZ camera is hooked up to and from that row, select the proper information for each PTZ camera connected from the drop down menu on your DVR.
2. The information to select should be specified in the the PTZ manual.
3. Once all the correct information is inputted into the online software, select "apply" to save changes.



## NETWORK SETUP MENU

The network setup menu is your gateway to viewing your footage online. This menu holds the information you need about your DVR to set up on-line viewing. As you have already set up your networking viewing, the network menu can be used for reference purposes. The options and selections in this network setup menu are the same as the network menu on your DVR. For more information on your network menu and what it consists of please see "Network Setup Menu" on page 22 of this manual.



## Settings

This tab allows you to adjust general settings for your online viewing software and DVR. The settings you can adjust include the Internet bandwidth, the file save path, password enable, changing the password, and daylight savings adjustment.

### Internet Bandwidth

Internet bandwidth is the transmission speed of your connection to the Internet. You need to know your bandwidth speed when changing this setting. To see what your bandwidth is you can go to [www.bandwidthplace.com](http://www.bandwidthplace.com) and have your bandwidth tested.

- To adjust the bandwidth on your software, click on the scroll list next to "Internet bandwidth" and select the bandwidth of your choice. The higher the bandwidth, the better the video quality.

### File Save Path

You can adjust where the files you capture, record and backup will save on your computer.

#### **To change where the files are saved:**

- Click the (...) box next to the save path area and a folder browse screen will appear.
- Find the area you want the files to be saved to and double click the area.
- Select OK.
- The file you want the footage/pictures saved to will appear in the box.
- Select "apply" to save settings.

## Password Setup

This menu selection allows you to enable password protection as well as set a new password for the user and admin accounts on your DVR.

### **To enable password protection:**

1. Select the scroll bar next to "password enable" and list will appear.
2. Select to turn the password enable to "on".
3. Select "apply", to save your changes.

### **To change the password**

You have the option to change the password for user and admin, a user will only be able to access the search menu to view saved footage, where admin will be able to access anything in the menu. Both default passwords are **123456**

1. Make sure password enable is set to ON.
2. Select the ..... box next to the password you would like to change and a keyboard will appear.
3. Type the password you would like then select enter to close the keyboard.
4. Type in the same password again next to "confirm" to confirm the password then select enter to close the keyboard.
5. Once you have input the passwords to your liking, select "apply", to save your changes.

## DST

DST stands for daylight saving time; you can adjust the DVR to change its time for you when daylight saving time approaches, so you don't have to go back and do it yourself. You can also customize when the DVR changes for DST.

### **To turn the DVR daylight saving time on:**

1. Select the scroll bar next to DST and list will appear.
2. Select "on" to turn the DST on.
3. Select "apply", to save your changes.

### **To set the DVR to adjust for daylight saving time on its own:**

1. Select the scroll bar next to DST and list will appear.
2. Highlight default and press select to turn the automatic DST adjustment on.
3. Select "apply", to save your changes.

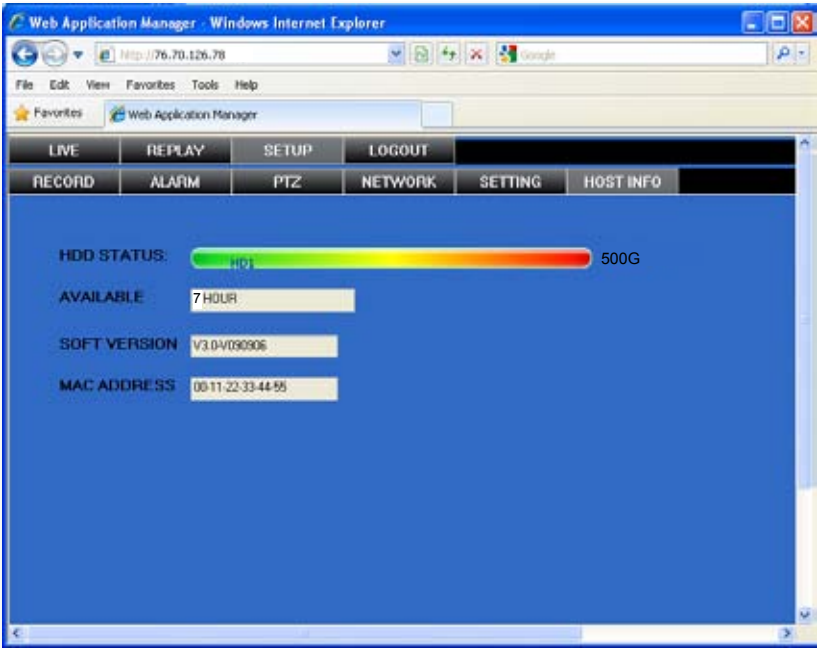
### **To customize the DVR's daylight saving time adjustment:**

1. Select the scroll bar next to DST mode and list will appear.
2. Select custom and a custom list will appear.
3. Adjust the time you want the clock to go back an hour by adjusting the week and month next to "start time".
4. Adjust the time you want the clock to go forward an hour by adjusting the week and month next to "end time".
5. To adjust the week and month, use the drop down list, highlight the week and/or month you want and press select.
6. Once everything has been adjusted to your liking, select "apply" to save your settings.

## Host Info

This area shows you information about your DVR system. The information you view cannot be changed.

- HDD Status:** Shows you how much space (in GB) you have available on your HDD
- Available Time:** The available recording time you have left on the HDD (in hours)
- Soft Version:** This area shows you the software version of the online viewing software
- Mac Address:** This is the DVR identification



## LOGOUT

Clicking on this tab logs you out of the online software and DVR viewing. When this tab is clicked the software will shut down, the screen will refresh and go to the initial user login.

### USER LOGIN

IP ADDRESS:

MEDIA PORT:

PASSWORD:

NETWORK:

## MOBILE VIEWING

This DVR is compatible with iPhone, BlackBerry, Windows Mobile and Symbian operating systems on 3G networks. Before you can access your DVR on a mobile phone you must make sure that the DVR has the proper network settings, has been port forwarded, and that you have the proper viewing software on your phone.

### **Set User name, password and port on DVR:**

1. Go to Mobile setup on the DVR.
2. Insert the user name and password which a mobile user would use to access the DVR footage.
3. Insert a port for the mobile footage to run from. Port 1024 is a good default port to use. Make sure that you port forward this port on top of the other two ports.
4. Select "apply" to save your settings.

### **Port Forwarding:**

Follow the port forwarding instructions found in the "port forwarding section" of the manual and use the port assigned in mobile viewing setup screen. **Be sure to forward the mobile port IN ADDITION to ports 80 and 9000.**

### **iPhone Viewing**

Before viewing your DVR footage from your iPhone, please ensure that you have iTunes set up on your computer, an activated iTunes account and that you have port forwarded an extra port for mobile viewing.

#### **From your computer or iPhone:**

1. Open your iTunes program and access the iTunes store.
2. From the iTunes store, search "aplayer".
3. The "aplayer" application will then appear.
4. Click on the application, open the download page and then download "aplayer".
5. The downloaded file will then be under your applications in your iTunes library.
6. Connect your iPhone to your computer.
7. Your iPhone will then be displayed under "Devices" to the left in the iTunes menu, open the device.
8. Open the applications menu from the top tab area and select "sync applications" and then select "aplayer" to add the aplayer application to your iPhone.
9. The aplayer application will now appear on your iPhone screen.

#### **From your iPhone:**

1. Open and Run the "aplayer" application.
2. Select the setup icon in the bottom right corner of the screen.
3. Fill in the following information:

**Server IP:** Input your DVR's IP address

**Port:** Input the port you forwarded for your mobile setup. Ensure that this port is also listed under mobile settings on your DVR

**User ID:** Input the user ID that you have set under the mobile settings on your DVR

**Password:** Input the password that you have set under the mobile settings on your DVR



- Once all the proper information has been entered on your iPhone and on your DVR. Press the Back button in the top left corner of the iPhone screen.
- Press the play button in the bottom left of the screen to start playing live footage from your DVR.
- For more information on the aplayer, please review the buttons and connections below.

## BUTTONS AND CONNECTIONS

- Viewing Screen
- PTZ controls
- Channel selection keys
- Play & Pause
- Snapshot
- Full screen
- Next group of channels (N/A for this DVR)
- Setup

*Note: Although the viewing software is free, you must have an iTunes account to download it.*



## BlackBerry Viewing

Before viewing your DVR footage from your BlackBerry, please ensure that you have the blackberry desktop manager installed on your compute and you have port forwarded an extra port for mobile viewing.


### From your computer:

- Connect your BlackBerry to your computer and open up the BlackBerry desktop manager.
- Select the "Application Loader" option from the main menu, from there, select the "Start" button for adding/removing any applications to your BlackBerry.
- Browse and select the .alx file from the blackberry folder on the software CD and click "Next".
- Once installed on your BlackBerry, select the "Finish" button to complete the installation.

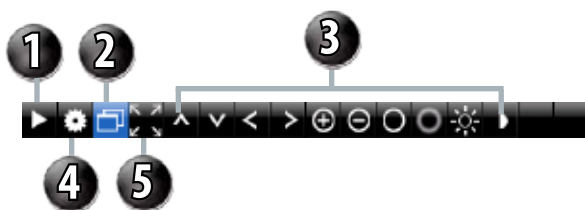
### From your BlackBerry:

- The installed software will be located in the "Downloads" directory from the menu.  From the downloads menu, select the software icon  to start the application.
- Once the program has started, select the settings icon , from the settings screen, input the following information.

- Host:** Input your DVR's IP address
- Port:** Input the port you forwarded for your mobile setup. Ensure that this port is also listed under mobile settings on your DVR
- User:** Input the user ID that you have set under the mobile settings on your DVR
- Password:** Input the password that you have set under the mobile settings on your DVR
- Default:** Input the channel you would like to start watching - the program allows you to change channels once the footage has loaded
- Wi-Fi:** If connecting with mobile network select "No" for this option, if connection through a wireless network, select "Yes" for this option

- Once you have input all the proper information, select "Save" to save the information and close the settings screen.
- Once the settings screen is closed, select the play button  to begin playing the footage.
- For more information on the BlackBerry player, see the buttons and their functions below.

- Play
- Camera Select
- PTZ Controls
- Settings Menu
- Full Screen View



## Windows Mobile setup

### *Install viewing software, from your computer:*

- Connect phone to computer and open the memory card folder.
- Insert included CD into drive and open up to view files.
- Copy and paste the viewing software onto the phone's memory card or installation folder.

### *From your phone:*

- Open up the area that the software was saved to.
- Select QQeye software to open. If prompted where to install the program, choose storage device.
- Once a file location is selected, select install. The program will begin to install.
- Once the program installs, run the QQeye program from your applications. The main program screen will display.
- Navigate to settings and press enter.
- The following information needs to be inserted:

- User name:** This is the user name you inserted for mobile settings on your DVR
- Password:** This is the password you inserted for mobile settings on your DVR
- Server:** This will be the IP address of the DVR
- Port:** This will be the mobile port you forwarded and specified on the DVR to view mobile settings we recommend using port 1024
- Channel:** This will be the camera you would like displayed when you view your DVR

7. Once the correct information has been inserted, select "OK" and a separate screen viewing your selected channel will appear.
8. The mobile software allows you to change channels, control a PTZ camera as well as capture a video.
9. If you capture a picture it will be stored in the same file location the program was installed.
10. You can convert normal display to full screen display by clicking the screen from on mobile device.

## Symbian Mobile

### **From your computer:**

1. Connect phone to computer and open the memory card or installation folder.
2. Insert included CD into drive and open up to view files.
3. Copy and paste the viewing software onto the phone's memory card folder.

### **From your mobile phone:**

1. Open the file location, and open up the QQeye.sis file. Note: Directions may vary on the type of phone that is being used. Refer to your phone instruction manual on how to access files from your mobile device.
2. The phone will begin preparation to install.
3. Once preparation is complete, the phone will request permission to install. Select "YES".
4. You will then be prompted to choose where you want the file to install (Phone memory or card memory, you can choose either location.)
5. Once you have selected where you would like to install the program, select "continue" and the program will install.
6. Once the program has installed, go to applications and open the program.
7. Upon opening the program, you will be prompted to insert the following information:

**Default access point:** Choose the access point used to access the Internet

**Server address:** Input the DVR's External IP address in this section

**Server Port:** Insert the set port for the Mobile connection

**User name:** Insert the set user name, this was specified on the DVR, under mobile setup

**Password:** Insert the set password, this was specified with the user name, under mobile setup on the DVR

**Channel:** Select the channel you would like to view from the start up

8. Once all the proper information has been inserted select "Done" to save your settings and start viewing the mobile viewing software.
9. For a full screen view, select the footage being displayed.

*Note: Directions may vary depending on the type of phone that is being used. Refer to your phone's instruction manual on how to access files from your mobile device.*

<p><b>The cameras are not sequencing</b></p>	<ul style="list-style-type: none"> <li>• Check if you have sequence turned on under the camera menu options</li> <li>• You must initiate the sequencing to get it to start by right clicking and selecting start auto sequence from the sub menu. Then the cameras will sequence according to the sequence dwell time</li> <li>• You must be in live viewing mode</li> </ul>
<p><b>Nothing is recording but all the images are appearing on screen</b></p>	<ul style="list-style-type: none"> <li>• You must initiate the recording to start by pressing the record button</li> <li>• Check under Record Setup in the main menu to make sure all the cameras are set to 'ON'</li> <li>• Check your record schedule to make sure the DVR is set to record that present hour</li> <li>• Verify that the HDD is installed and formatted in the device menu</li> </ul>
<p><b>The camera picture is too dark</b></p>	<ul style="list-style-type: none"> <li>• Adjust the cameras brightness settings under Main Menu&gt;Camera&gt;Color</li> <li>• Try moving your camera to a brighter area</li> <li>• Make sure the camera is not pointing directly into a light source</li> <li>• If using at night, make sure subject is no more than 15ft away from camera. The LEDs need to reflect off an object to display an image</li> <li>• If using during the day, your camera may not be getting enough light on it. Adjust the sunshade (top of camera) to let more sun hit the camera</li> </ul>
<p><b>My night vision will not turn on/I can't see at night</b></p>	<ul style="list-style-type: none"> <li>• Night vision turns on automatically on the cameras when the sensor detects a lack of light. If your cameras are in a space with too much light, the night vision will not turn on</li> <li>• The night vision cameras are made to see 10-15 ft away in the dark. If you have the cameras in an open area the night vision will be reduced. The IR LEDs need to reflect off an object to display an image</li> </ul>
<p><b>The video plays choppy when viewing live footage online</b></p>	<ul style="list-style-type: none"> <li>• When multiple people view the DVR at the same time, it slows the connection to the DVR. Try accessing the DVR at a later time</li> <li>• This could be due to the speed of your Internet connection. Check with your Internet service provider if the video seems to be choppy no matter when you check it</li> <li>• It is normal for there to be a small time delay between the camera live footage and the network viewing</li> </ul>
<p><b>The browser keeps freezing/won't let me play the footage</b></p>	<ul style="list-style-type: none"> <li>• Make sure you have an up to date browser to view the footage with the proper ActiveX options</li> <li>• Make sure the browser is Internet Explorer, the software will not play on any other browser</li> <li>• Download all Windows Updates to make sure you have the latest version of Windows and Internet Explorer</li> </ul>

<b>Cannot power off DVR</b>	<ul style="list-style-type: none"> <li>The DVR is set to run as long as it is plugged in. To power off the DVR disconnect the power cable</li> </ul>
<b>Playback video is choppy</b>	<ul style="list-style-type: none"> <li>Check the FPS for each camera that is recording the choppy video. Refer to your settings in the main menu. The more FPS the smoother the video. If the FPS is set too low the video will appear choppy</li> </ul>
<b>The schedule is not recording properly to my set times</b>	<ul style="list-style-type: none"> <li>Check to see if you have the proper time set on your DVR. Refer to the instruction manual under System → Date and Time (Pg. 35)</li> <li>Double check your schedule record times – you may have it set on the no record function</li> <li>Remember that the DVR works on a 24 hour clock. 13:00 would be 1 O'clock PM</li> </ul>
<b>There is a beeping noise whenever motion is detected</b>	<ul style="list-style-type: none"> <li>Buzzer is set to on, go to the alarm set up and turn the buzzer function off</li> </ul>
<b>I cannot see (all/one) of the camera(s) on the monitor</b>	<ul style="list-style-type: none"> <li>Check if the cameras are properly hooked up to the back of the DVR and to a power source</li> <li>If using the 4 to 1 power connector, make sure it is plugged into a power source and each of the cameras</li> <li>Check Camera Setup from the main menu to see if any of the cameras are turned off</li> </ul>
<b>I have lost video footage</b>	<ul style="list-style-type: none"> <li>This could be from lost footage due to tampering of cameras. Make sure to check all connections are secure and set properly</li> <li>This could be because HDD overwrite is enabled. This means that once the HDD is full the DVR will begin overwriting the earliest stored footage</li> <li>Try unplugging the power to the cameras and/or DVR and plugging it back in</li> </ul>
<b>The hard drive is filling up too quickly</b>	<ul style="list-style-type: none"> <li>Check the video quality you are using. If you are using a high video quality then the hard drive will fill up faster. Trying lowering the video quality</li> <li>Adjust your schedule or resolution – If you are on Normal Record for 24 hours a day the hard drive will fill up faster. Try switching some times to alarm record</li> </ul>
<b>I am prompted to put in a password for everything</b>	<ul style="list-style-type: none"> <li>This is because you have the password enable set to ON in the system menu</li> </ul>
<b>My DVR is connected to my router, and both devices have DHCP enabled, but my DVR will not acquire an IP address</b>	<ul style="list-style-type: none"> <li>Check Ethernet connections, ensure that the connection lights are on (on router and back of DVR)</li> <li>Try using a different Ethernet cable and/or a different port on your router</li> </ul>

<p><b>I can't see the online footage using my external IP address</b></p>	<ul style="list-style-type: none"> <li>• Sometimes your router will not allow you to view the footage with your external IP address because the DVR is hooked up to the same router. Try putting the DVR's internal IP address in the address bar and try to connect</li> <li>• See the network set up section for set up instructions</li> <li>• If using a Port other than 80 add it to the end of the IP address</li> </ul>
<p><b>Cannot view the DVR through a remote Internet connection</b></p>	<ul style="list-style-type: none"> <li>• Port Forwarding may not be set up correctly</li> <li>• The external IP address of the DVR may have changed. Try setting up the DDNS account to always be up to date with the latest IP information</li> <li>• The ISP may be blocking network traffic on Port 80. Try changing the HTTP port to 2000 and re-configure the port forwarding</li> <li>• Refer to the Network Setup Section of the manual for more troubleshooting and for detailed instructions on how to set up the DVR for remote viewing</li> </ul>
<p><b>Remote control is not working</b></p>	<ul style="list-style-type: none"> <li>• Make sure the batteries are installed correctly</li> <li>• Make sure you are pointing the remote at the IR sensor (on the top right side of DVR)</li> <li>• Point the IR Remote at the camera lens and press a button. You should be able to see the IR LED flicker through the DVR monitoring device</li> <li>• Try replacing the batteries in the remote</li> </ul>
<p><b>I plugged a mouse into the USB port but it's not working</b></p>	<ul style="list-style-type: none"> <li>• Make sure the mouse is connected to the proper USB port. The proper port for the mouse is the top USB port on the back. It will be labelled with a mouse icon next to it</li> </ul>
<p><b>The DVR keeps beeping at me</b></p>	<ul style="list-style-type: none"> <li>• There could be video loss, HDD loss, motion detection or no HDD space on your DVR. The CV301-8CH is set to alarm when those actions take place. This is to alert you if anything is tampering with the camera to DVR connections the alarm will go off. Check your connections and keep the DVR in a safe place where it will not be tampered with or moved around</li> <li>• Disconnect and reconnect all camera connections to make sure they are snug and tight fitting</li> </ul>
<p><b>The network settings on the DVR are not showing me any information</b></p>	<ul style="list-style-type: none"> <li>• Make sure the DVR is properly connected to the router. There should be green link indicator lights if the DVR is properly connected</li> <li>• Make sure the DVR IP Allocation is set to DHCP. This is a standard default setting that will work in most networking situations</li> <li>• Power cycle the DVR if it is properly connected and the IP Allocation is set to DHCP</li> </ul>
<p><b>The HDD light is blinking</b></p>	<ul style="list-style-type: none"> <li>• This is completely normal. If the hard drive is playing back footage or recording, the light will blink to notify you that there is activity</li> </ul>

Video System.....	NTSC / PAL (Manual Switching)
Video Compression Format .....	H.264
Video Input (Composite Video Signal 1 Vp-p 75Ω BNC) .....	8 Channels
Video Loop Output (Composite Video Signal 1 Vp-p 75Ω BNC) .....	No
Video Output.....	Main Monitor Output: VGA Output 2x Composite Video Signal 1 Vp-p 75Ω BNC; Call Monitor Output: No
Recording Resolution .....	NTSC: CIF(352 X 240) PAL: CIF(352 X 288)
Recording Speed (Frame)	30 FPS per Camera (NTSC) / 25 FPS (PAL)
Multilingual OSD.....	English, Duetsch, Italiano, Russian, Francais, Espanol, Portugues, Polski
Image Quality Settings .....	Best, Good, Normal
Hard Disk Storage .....	500Gb SATA HDD
HDD Quick Cleaning .....	Quick clean up the "index system" of the recorded files
Recording Modes .....	Always/ Manual/ Time Schedule Record/ Motion
Refresh Rate .....	240 IPS for NTSC / 200 IPS for PAL
Triplex Operations .....	Recording, Playback, and Network Transmission
Remote Control Operation.....	Yes
Audio I/O .....	1 RCA Audio Input, 1 RCA Audio Output (Mono)
Motion Detection Area .....	15 x 10 grids per camera for all channels
Motion Detection Sensitivity .....	4 Adjustable variables with precise calculation for motion detection
Backup Device .....	USB 2.0 flash drive, network to avi, USB Burner
USB Interface .....	Back panel * 2 (Supports USB mouse, Removable HDD, USB Flash drive)
SATA Interface .....	Yes (Internal)
VGA Interface .....	Back panel * 1
Web Transmitting Compression Format .....	H.264
Network Connections.....	10/100 Base-T. Support remote control; Playback DVR HDD video and live view via Ethernet
Web Interface .....	Licensed software AP, IE browser
Remote Alarm Notification .....	Email Alerts
Network Protocol .....	TCP/IP, PPPoE, DHCP and DDNS, 3G
IR Receiver .....	Yes

<b>PTZ Control</b> .....	<b>Yes (Pelco-D, Pelco-P)</b>
<b>Dwell Time (Sequential Channel Switch)</b> .....	<b>Programmable with adjustable dwell time (0-10 sec.)</b>
<b>Picture Zoom</b> .....	<b>2x digital zoom (live mode / playback mode)</b>
<b>Key Lock</b> .....	<b>Yes</b>
<b>Video Loss Detection</b> .....	<b>Yes</b>
<b>Camera Title</b> .....	<b>Supports up to 8 letters</b>
<b>Video Adjustable</b> .....	<b>Hue / Color / Contrast / Brightness</b>
<b>Date Display Formats</b> .....	<b>YY/MM/DD, DD/MM/YY, MM/DD/YY</b>
<b>Daylight Saving</b> .....	<b>Yes</b>
<b>Power Source</b> .....	<b>DC 12V 3A</b>
<b>Power Consumption</b> .....	<b>&lt;30 W</b>
<b>Operating Temperature</b> .....	<b>10°C ~ 40°C (50°F ~ 104°F)</b>
<b>Dimensions (mm)</b> .....	<b>315 (W) × 52 (H) × 224 (L)</b>
<b>System Recovery</b> .....	<b>System auto recovery after power failure</b>
<b>Weight</b> .....	<b>3.0 lbs</b>



# WHAT IS INCLUDED

**SVAT ELECTRONICS**  
*now you can see*



8 x Indoor/Outdoor  
Night Vision CCD Color  
Cameras



2 Window  
Security Stickers



4 PIN DIN to RCA (male)  
Video/Power Wire



2 x 4 Port Power Supply  
for Cameras

- BNC to RCA Connector
- 1 Power Adapter for Camera
- Mounting Hardware
- Instruction Manual
- 1 Year Warranty
- Online/Toll Free Support

# FEATURES



## VU301-C Camera

- 1. Sun Shield:** Helps prevent glare from bright lights
- 2. Infrared (IR):** LEDs allow the camera to see in the dark up to 15ft away.
- 3. CDS Sensor:** Automatically turns on the infrared LEDs when it gets dark
- 4. Camera Housing:** Made of anodized aluminum to prevent rust
- 5. Camera Mount:** Allows the camera to be desk or wall mountable
- 6. 4 PIN DIN Female Connection (connects to male RCA)**

## One to Four Power Supply Cable

- 1. Female 12V Connection**
- 2. Camera Power Supply Ports**  
The One to Four power Supply Cable allows you to plug four cameras into one power source, saving you time and space.

### IMPORTANT INFORMATION

While this camera is weather resistant, it is not waterproof. Please do not install it in areas that receive direct rain or under eaves trough draining spots. Do not cut the DC power cable of this camera to fit with another power source. Do not cut the video connection wire to fit with a different video connection type. Any unauthorized modifications will void your warranty.



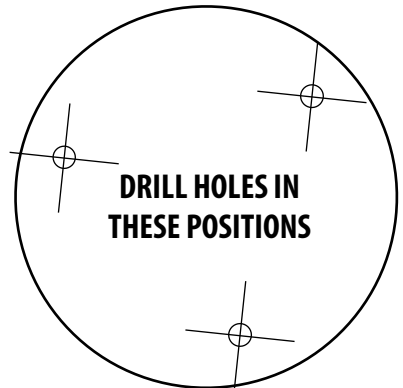
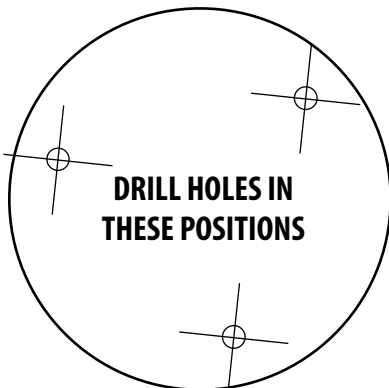
## WIRING INSTRUCTIONS

1. Plug 12V adapter (A) into electrical wall outlet or surge protecting power bar.
2. Plug the single end of the four port power supply (C) into the male end of the 12V adapter (B).
3. Connect the 4PIN DIN female connection on the camera (E) into the 4PIN DIN male connection on the 60ft video power wire (F).
4. Plug the power jack (G) from the 60ft video/power wire into one of the ports of the four port power supply (D).
5. Attach the BNC to RCA connector (L) to the video inputs (J) on the back of the DVR.
6. Connect the yellow male RCA plug (H) from the 60 ft cable to the BNC to RCA (K) connector on your DVR.
7. Repeat the above steps for all of the included cameras.

## DRILLING TEMPLATE

To wall mount the camera, drill three holes using a 3/16" drill bit and the template below. Insert the supplied wall anchors into holes and secure camera to wall with supplied screws.

.....Tear Here.....



<b>Camera Type</b> .....	Weather resistant Color IR CCD Camera
<b>Image Sensor</b> .....	1/4" Color SHARP CCD
<b>Resolution</b> .....	420 TV Lines
<b>Outdoor Use</b> .....	Yes
<b>IP Rating</b> .....	IP65
<b>Focal Length</b> .....	3.6mm
<b>Focus Type</b> .....	Fixed
<b>Optimal Focal Distance</b> .....	20 ft
<b>Motion detection</b> .....	No
<b>Night Vision</b> .....	Yes
<b>Number of IR LEDs and Range</b> .....	12, up to 15ft
<b>IR LED Control</b> .....	Automatic (CDS Sensor)
<b>Min. Illumination</b> .....	0 lux
<b>IR Wavelength</b> .....	850nm
<b>Video Output</b> .....	4 PIN DIN to RCA
<b>TV System</b> .....	NTSC
<b>Viewing Angle</b> .....	60 Degrees
<b>Electronic Shutter</b> .....	1/60 ~ 1/100000 sec
<b>BLC</b> .....	No
<b>AGC</b> .....	Automatic
<b>ELC</b> .....	Automatic
<b>Line Lock</b> .....	No
<b>Iris Control</b> .....	No
<b>Gamma Correction</b> .....	>0.45
<b>White Balance</b> .....	Automatic
<b>Sun Shield</b> .....	Yes
<b>IR Cut Filter</b> .....	No
<b>Housing Material</b> .....	Anodized Aluminum
<b>Housing Color</b> .....	Silver
<b>Signal/Noise Ratio</b> .....	>48dB
<b>Camera Bracket</b> .....	Yes
<b>Lens Mount type</b> .....	M12
<b>Pan/Tilt/Zoom</b> .....	No
<b>Operating Temperature</b> .....	-10° ~ 60°C / Degrees
<b>Operating Humidity</b> .....	98%
<b>Camera Power Input</b> .....	DC 12V 300mA
<b>Power Adapter Input</b> .....	120V 60Hz
<b>LED Power Indicator</b> .....	No
<b>Dimensions</b> .....	4.7"(L) x 2.5"(W) x 2.5"(H)
<b>Weight</b> .....	0.7 lbs



Before contacting technical support, please follow the troubleshooting tips below for solutions to common problems.

Email:  
**support@SVAT.com**

Toll free telephone:  
**1.866.946.7828**

Toll free fax:  
**1.888.771.1701**





Online live web chat:  
**Visit [www.SVAT.com](http://www.SVAT.com)**

<p><b>No picture/signal</b></p>	<ul style="list-style-type: none"> <li>• Make sure your TV/monitor is on the correct video input channel. This is NOT channel 3. Common terms for this channel is INPUT, AV CHANNEL, LINE 1, LINE 2 and AUX. Please use your TV or VCR manual to correctly identify this channel</li> <li>• If your camera is connected to a VCR/DVR, make sure that it is properly connected to your TV/monitor</li> <li>• Check all connections to make sure they are secure and properly connected</li> <li>• Check your power supply to ensure that the camera is powered up</li> <li>• Cup your hands around the front of the camera and look at the LEDs. They should be glowing red. If they are not, check the power supply</li> </ul>
<p><b>Picture is too bright</b></p>	<ul style="list-style-type: none"> <li>• Make sure your camera is not aimed at direct sunlight</li> <li>• Adjust the sunshade by sliding it forwards to block out excess light</li> <li>• Make sure nothing is obstructing the CDS sensor on the camera. If the CDS sensor is blocked, night vision mode will be active and may produce extra light in your camera's picture</li> <li>• Move your camera to another location</li> </ul>
<p><b>Picture is too dark</b></p>	<ul style="list-style-type: none"> <li>• If using at night, make sure your camera's subject is no more than 15ft away (may vary based on amount of ambient light available)</li> <li>• If using during the day, your camera may not be getting enough light. Adjust the sunshade by sliding it backwards to let in more light</li> <li>• Check the brightness and contrast settings on your TV/monitor</li> <li>• If your camera is connected to a VCR/DVR, check the brightness and contrast settings on the VCR/DVR</li> <li>• Move your camera to another location</li> </ul>
<p><b>Night Vision is not working</b></p>	<ul style="list-style-type: none"> <li>• The night vision turns on automatically when light levels drop. Try the camera in a pitch black setting. The area that it is in may have too much light and may not activate the sensor</li> <li>• Cup your hands around the front of the camera and look at the LEDs. They should be glowing red. If they are not, check the power supply</li> </ul>

# REPLACEMENT PARTS





**SVAT ELECTRONICS**  
now you can see

If you accidentally damage or lose any parts they can be replaced with ease. The following are parts that came with your system and their reference model numbers so you can continue to effectively monitor your premises.

PRODUCT	MODEL#	DESCRIPTION
	<b>CVW61</b>	<i>4 PIN DIN Cable</i>
	<b>ACC-BNC</b>	<i>BNC to RCA Connector</i>
	<b>ACC-SQUID-4T01</b>	<i>Four-to-One Power Supply</i>
	<b>SOFTWARE/ MANUALS</b>	<i>Your product software and manual are available for download at: <a href="http://www.svat.com/downloads.php">http://www.svat.com/downloads.php</a></i>

# ADDITIONAL ACCESSORIES

You may wish to add to your system and upgrade some components of it. Here are some items that can boost the effectiveness of your video security system.

PRODUCT	MODEL#	DESCRIPTION
	<b>CVW62</b>	<i>Extend the range of your cameras with a 60ft extension.</i>
	<b>VU301-C</b>	<i>Upgrade your camera to a higher resolution and advanced UV filters for accurate and vibrant colours.</i>
	<b>VU100-ST</b>	<i>Alert all potential criminals of your security and help deter crime with a window sticker.</i>
	<b>SGN100</b>	<i>Alert all potential criminals of your security and help deter crime with this durable aluminum sign.</i>

*For more information on additional accessories, parts and much more, please visit:*

**[www.svat.com](http://www.svat.com)**

# VISIT US ON THE WEB!

- ▶ Product Information
- ▶ User Manuals
- ▶ Quick Start Guides
- ▶ Specification Sheets
- ▶ Software Updates
- ▶ Firmware Upgrades

**[www.SVAT.com](http://www.SVAT.com)**

## **Disclaimer**

SVAT does not endorse the use of any SVAT products for illegal activities. SVAT is not responsible or liable in any way shape or form for any damage, vandalism, theft or any other action that may occur while a SVAT product is in use by the consumer.



**[www.SVAT.com](http://www.SVAT.com)**

**Model#:  
CV301-8CH**

## Free Manuals Download Website

<http://myh66.com>

<http://usermanuals.us>

<http://www.somanuals.com>

<http://www.4manuals.cc>

<http://www.manual-lib.com>

<http://www.404manual.com>

<http://www.luxmanual.com>

<http://aubethermostatmanual.com>

Golf course search by state

<http://golfingnear.com>

Email search by domain

<http://emailbydomain.com>

Auto manuals search

<http://auto.somanuals.com>

TV manuals search

<http://tv.somanuals.com>