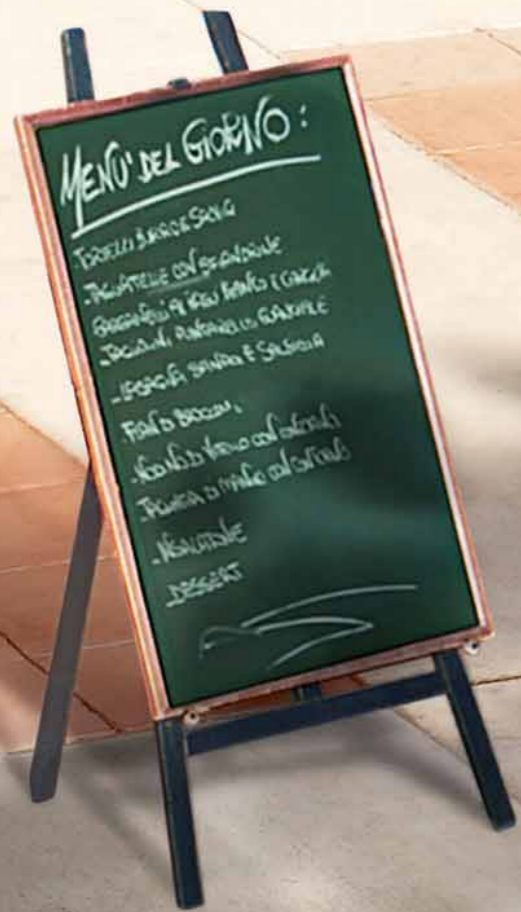




2009 | Impreza



Your instant message to the world.





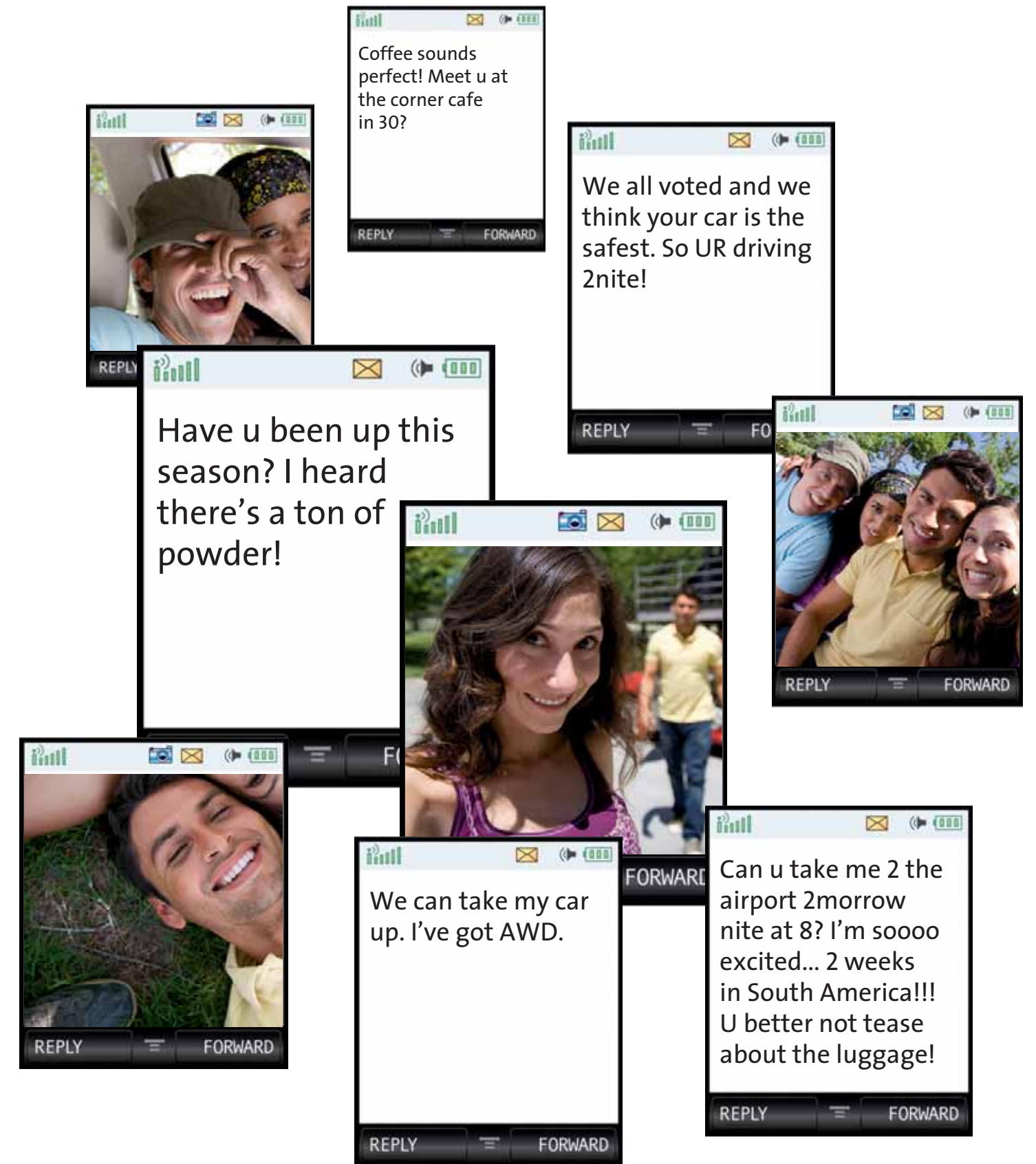
The 2009 Subaru Impreza.

**Because you love calling the shots.**

Backpacking by day. Backstage by night. Finally a car that can keep up with your demanding life. With trademark Subaru traction and control, the 2009 Impreza® can take you and your friends as far away from the action as you want and has the roominess and safety to get everyone back to the middle of everything. And we know how you like to keep your options open. So you can go for four doors or five, and choose from four models, including the all-new, turbocharged 2.5GT. Good luck picking a favorite.

## Works smarter so you can play harder.

The Impreza gives you the freedom to do what you want, when you want. Weather won't stop you, with the unique standard Subaru Symmetrical AWD. Space won't limit you, with the remarkably flexible interior. And your stuff won't get in your way, with all the compartments and places for gear. With such smart design and engineering, there's truly nothing stopping you now.



### Efficient Engineering

The Impreza is designed to make every adventure seem effortless. The standard Subaru Symmetrical All-Wheel Drive allows you to take on almost any terrain with ease and the horizontally opposed SUBARU BOXER® engine assures you'll get there quickly. While the active and passive safety features let you spend less time worrying and more time just doing.

### Flexible Space

Whether it's more friends or more stuff, you never know what you are going to pick up along the way. Luckily, the Impreza can adapt to almost any situation. Inside you'll find the handy 60/40-split flat-folding rear seats that let you arrange your space accordingly, a spacious cargo area and storage compartments throughout.

## Interior and Technology

The Impreza comes stocked with all the standard and available features inside that make it not just driver-friendly but friend-friendly. The available 10-speaker audio system lets you and your passengers enjoy the tunes and the convenient steering wheel controls mean that you can change songs or stations without missing a beat—or the next off-ramp. With all the gadgets and room inside the Impreza, you and your friends won't mind hanging out in it for awhile. On your way to your next hangout, of course.



### Audio System

You'll never want the music to end with the available 10-speaker audio system featuring a 6-disc CD changer and SRS Circle Surround Automotive® audio enhancement. You can also charge, play and control your iPod® through the audio system with the available accessory iPod interface kit.

### Satellite Radio

Listen to indie, rock or even your favorite uncensored talk show in digital-quality sound, wherever your journey takes you. Every Impreza is XM® or SIRIUS® Satellite Radio ready,<sup>1</sup> while navigation-equipped models give you standard SIRIUS that lets you access over 130 channels of satellite feed.<sup>2</sup>

<sup>1</sup> Subscription and additional equipment required.  
<sup>2</sup> Activation and monthly subscription sold separately.



### Moonroof

The wide-open sky, available at the touch of a button. The available moonroof lets the sunshine and fresh air in for both the front and rear passengers. So you can enjoy the great outdoors without leaving your car.

Impreza 2.5GT with Carbon Black cloth.



### Navigation System

Just a few taps on the available touch-screen system and you'll have an instant guide—across town or across the country. Not only can your navigation system get you to your destination, it can also keep you entertained. While the car is parked, you can enjoy a DVD on the 7-inch display screen.



11.3

cubic feet of cargo space

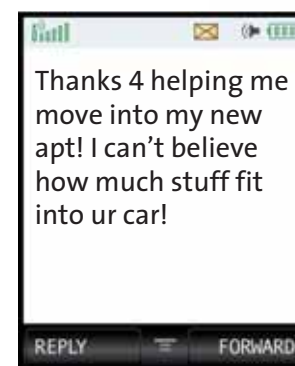


44.4

cubic feet of cargo space<sup>1</sup>

## Flexibility

Life is unpredictable. One day you're helping someone move, the next day it's your turn to carpool. So, you need a car that can make room for the unexpected. The Impreza does just that, with all the versatile seating configurations and accommodating cargo space. If you are the kind of person that is up for anything, you need a car like the Impreza that is too.



### Versatile Space

The Impreza, both the 4- and 5-door, lets you transport a myriad of differently sized objects with their 60/40-split flat-folding rear seats. With both of the rear seatbacks up, you can seat three friends. It also allows for two passengers and a long item, or one passenger and gear for everybody. Or fold both for full access to the trunk or cargo area.

### Storage

You'll find plenty of storage compartments around the cabin, such as door bins for all four doors and a sizeable center console. In the cargo space of the 5-door, there are nooks to hold small items to keep them neat and organized, as well as cargo hooks. And a retractable cargo cover keeps it all covered from prying eyes.

### Cargo Area

The rear suspension of the Impreza doesn't just help it handle better, it helps it handle more. The 5-door offers up to 19.0 cubic feet of space with both rear seats in use. With both rear seats folded, you can make full use of the maximum 44.4 cubic feet of cargo capacity. Meanwhile, the 4-door can take on three golf bags in its 11.3 cubic feet trunk.

## Outdoor Utility

For those who want to take their Impreza even farther, they can. The Outback Sport® comes with a roof carrier base to hold your boards and a raised suspension to help get you to your secret spot.



Impreza Outback Sport in Sage Green Metallic/Steel Silver Metallic.

Subaru Symmetrical All-Wheel Drive was engineered to give drivers the best traction system available. Better traction means better **control** and handling. It expands a vehicle's limits and the conditions in which it performs. Traction increases the confidence a driver can put in their vehicle. Subaru believes in traction. It's why Subaru owners believe in their vehicles.

**why**



#### All Weather Conditions

Snow and rain can surprise even the best planners. Be ready for less-than-ideal conditions with the exceptional traction, handling and control of Subaru AWD.

#### Accident Avoidance

When danger steps into your path, the safest route is to step right around it. The trademark traction and control of Subaru AWD helps you stay safe by staying ready.

#### Spirited Handling

You won't be the first to be impressed by the handling and agility of the Impreza. Subaru AWD maximizes the feeling of being connected to the road with its remarkable balance and grip.

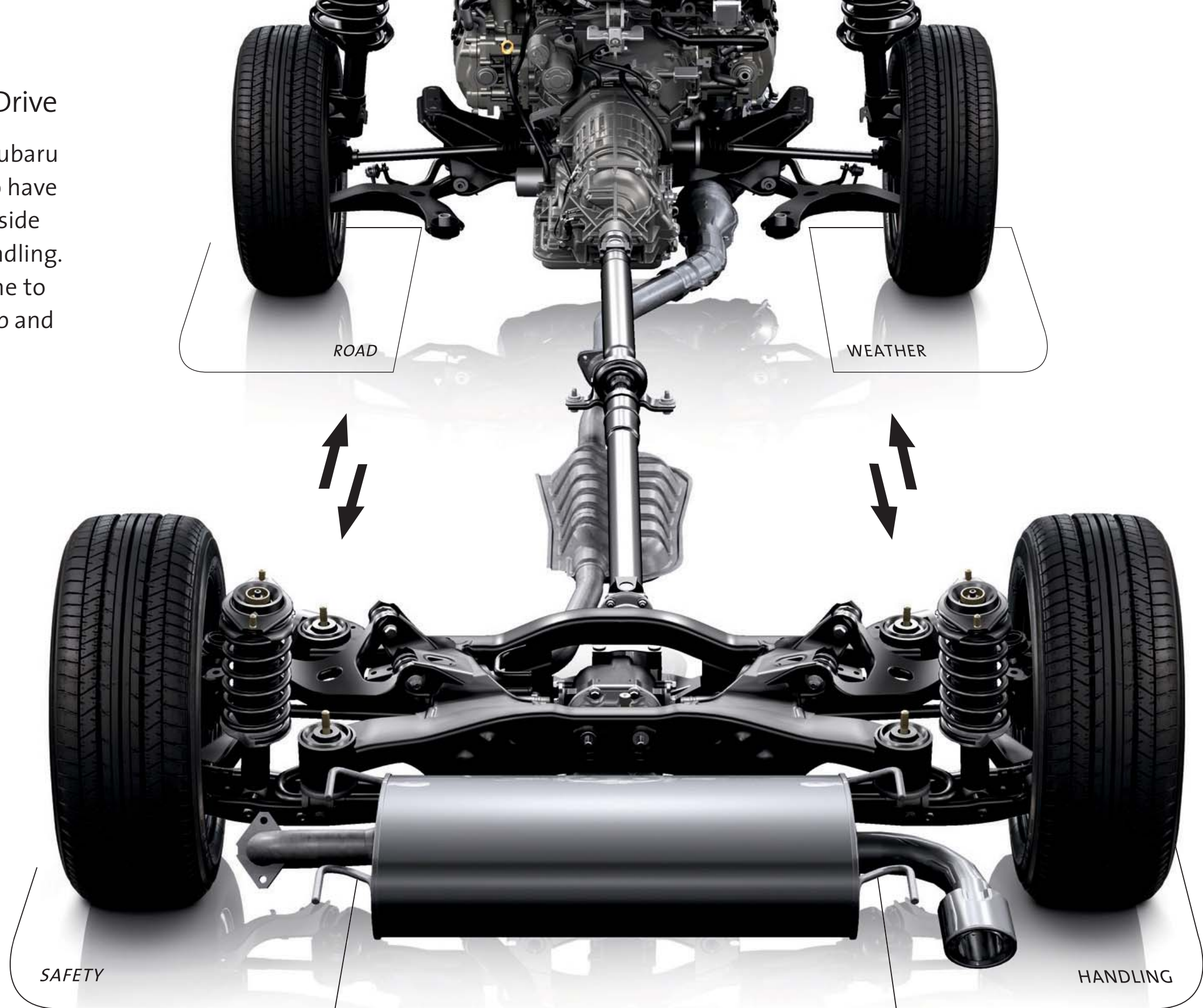
#### Multiple Road Types

Subaru AWD provides adhesion to own your favorite stretch of immaculate asphalt. And it also gives you the freedom to tackle a myriad of road surfaces with confidence.



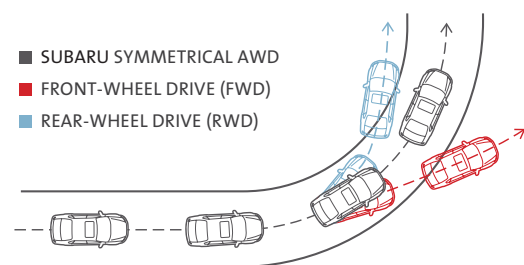
## The Advantages of Subaru Symmetrical All-Wheel Drive

All AWD systems are not the same. For more than 30 years, Subaru has been engineering Subaru Symmetrical All-Wheel Drive to have distinct advantages over other systems. Almost total side-to-side symmetry creates optimal balance for stability and sharp handling. And since power flows in a more direct path from the engine to all four wheels, it works with brilliant efficiency for secure grip and quicker response to slippage.



### Exceptional Control

The Subaru Symmetrical All-Wheel Drive system, with its fore, aft and lateral balance, results in excellent handling overall. Unlike a rear-wheel drive car which may oversteer, or a front-wheel drive car that is more prone to understeer, the full-time symmetrical AWD of the Impreza transfers power to all four wheels for more stable, neutral cornering. The result? Greater safety and intensified performance.



### Instantaneous Response

Only four small patches of rubber keep you in control of your vehicle. The more your tires are engaged, the more control you have. Unlike FWD or RWD vehicles, the Subaru Symmetrical AWD system keeps power routed to all four tires. So they're all ready to respond when you use the throttle, especially in tight curves or unexpected maneuvers.

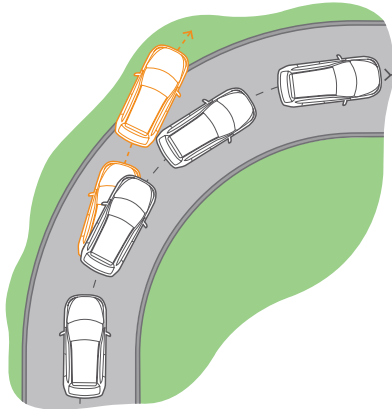
### Road Adhesion

The greater the grip the tires have on the road, the more predictable your car becomes. With all four wheels receiving power all the time, chances are much more likely that tires will stick to the road, avoiding slippage, and your vehicle will stay on the intended trajectory. Think of it as prevention rather than reaction.

## Performance

Your fast-paced life just got faster. The Impreza has no trouble keeping up with you, whether you choose the 170-horsepower 2.5-liter engine with impressive fuel economy and lower emissions. Or if you crave even more power, there's the new turbocharged 2.5GT with an impressive 224-horsepower engine—named International Engine of the Year.<sup>1</sup>

<sup>1</sup> Turbocharged 2.5-liter engine. International Engine of the Year Awards 2008, 2-litre to 2.5-litre category. Presented by engine technology international magazine.



### Vehicle Dynamics Control (VDC)

The standard electronic stability control system helps keep you on your intended path by measuring variables such as steering input, braking and vehicle angle. Sensing any slide that causes the vehicle to deviate from your intended course, VDC applies individual brakes and/or reduces engine power to counteract the slide and help keep you safely in control.



### Double Wishbone Suspension

Riding on a rear double wishbone suspension, the Impreza is all about smooth and polished road manners with more than enough verve to take on those curvy canyon roads. And the Outback Sport comes with a raised suspension that helps put many unpaved roads within reach.

### Transmissions

Choose between the smooth shifting 5-speed manual with Incline Start Assist that's fully synchronized for precise action. Or opt for the convenience of the 4-speed automatic transmission with SPORTSHIFT® manual control that lets you set it in Drive when you want to, or lets you switch gears manually by moving the shifter up or down.



### Subaru Boxer Engine

The unique SUBARU BOXER engine of the Impreza delivers increased punch when you need it and smooth acceleration anytime. Also, the horizontally opposed configuration helps give the Impreza a lower center of gravity, enhanced stability and precision handling for the drive.



Impreza 2.5GT 4-door in Spark Silver Metallic.



2008  
Kelley Blue Book®  
Coolest New Cars Under \$18,000  
[www.kbb.com](http://www.kbb.com)

The Subaru Impreza was named a 2008 Coolest New Car Under \$18,000 by Kelley Blue Book's [kbb.com](http://kbb.com)!

<sup>1</sup> For more information about the 2008 Coolest New Cars Under \$18,000 from Kelley Blue Book's [kbb.com](http://kbb.com), visit [www.kbb.com/coolcars08](http://www.kbb.com/coolcars08).



Impreza 2.5i Premium 4-door in Lightning Red.

For Subaru, the only thing more important than the driving experience of our vehicles is that you arrive safely at your destination. This commitment to **protect** occupants with multidimensional safety is what made each and every Subaru model tested, when equipped with available VDC, an IIHS 2008 Top Safety Pick.<sup>1</sup>

live



for front and side-impact collisions.<sup>2</sup>

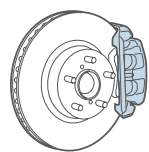
— National Highway Traffic Safety Administration

**Active Safety** | Trust. Subaru knows that this is the most important feeling to have when you get behind the wheel. You can drive with confidence knowing that Subaru engineered the Impreza to assist in keeping you safe by helping you avoid accidents. Exceptional visibility helps you see danger coming, and active technologies like Subaru AWD and a responsive suspension help you stay in control in an emergency.

**Passive Safety** | In a worst-case scenario, the Subaru Impreza is one of your best possible bets. Government crash testing recognizes the Impreza with a five-star crash-test safety rating.<sup>2</sup> Its brilliant track record in safeguarding passengers comes from an array of advanced protection technologies coupled to a body structure that is meticulously engineered to help save lives.

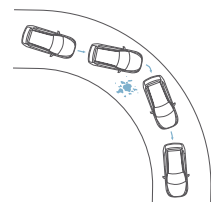
#### Brake Assist

This safety feature closely monitors the pressure you apply to the brake pedal. If it detects a panic-braking situation, it helps you avoid collisions by quickly applying maximum braking force.



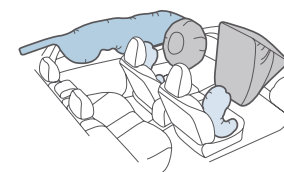
#### Vehicle Dynamics Control (VDC)

Standard on every 2009 Impreza, VDC electronic stability control monitors the path of your vehicle to help detect unwanted deviations in your trajectory, and correct them to keep you in control and on the right path.



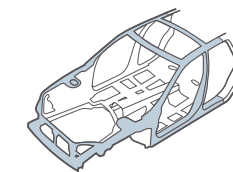
#### Front, Side and Side-Curtain Airbags<sup>3</sup>

An array of sensors can deploy any one or more of the six airbags the instant an accident is detected. The Impreza features side-curtain airbags to better provide all-over protection for the driver, front passenger and outboard rear passengers.



#### Ring-Shaped Reinforcement Frame

Exceptionally strong, the frame design of the Impreza not only helps to maintain cabin integrity during a crash—it also helps divert dangerous impact energy away from occupants.



<sup>1</sup> Rating based on Insurance Institute for Highway Safety's (IIHS's) 40-mile-per-hour frontal crash test, 31-mile-per-hour side-impact test, and 20-mile-per-hour rear-impact test. For more information, contact IIHS or visit their website at [www.iihs.org](http://www.iihs.org).

<sup>2</sup> Star ratings are part of the U.S. Department of Transportation's [safercar.gov](http://www.safercar.gov) program ([www.safercar.gov](http://www.safercar.gov)).

<sup>3</sup> Always wear seatbelts. Children should be properly restrained in the rear seat.



### Zero Landfill

In 2004, Subaru of Indiana Automotive (SIA) became the first manufacturing facility in the U.S. to reach zero landfill status—nothing from its manufacturing efforts ever goes into a landfill. What's more, Subaru facilities in Japan have achieved similar goals in reusing and recycling industrial waste, as well as greatly reducing carbon emissions.

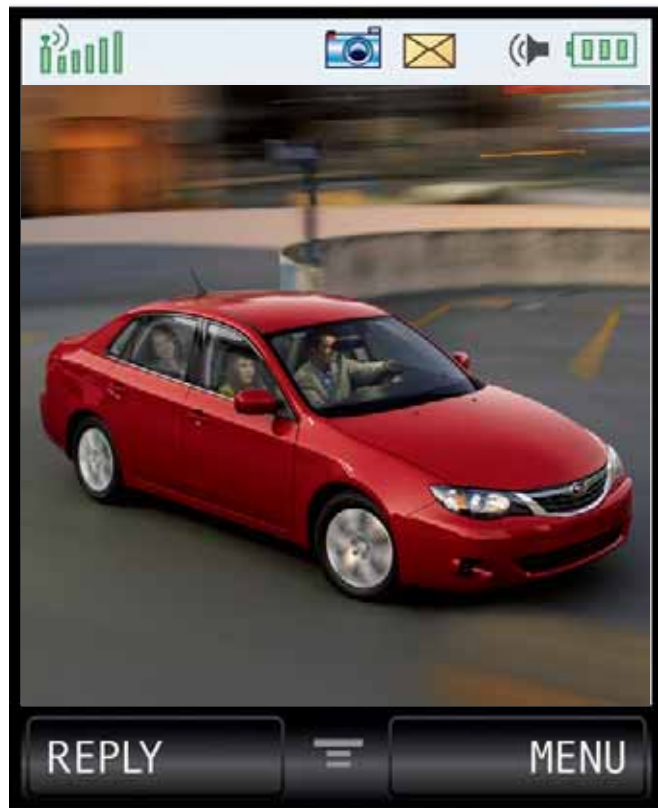
### Protecting Wildlife

In 2003, SIA became the first U.S. automotive assembly plant to be designated a wildlife habitat. Subaru shares the site with numerous natural residents including deer, blue herons and beavers.

Ruggedness, versatility and a low impact on the **environment** have long made Subaru vehicles the choice of drivers who want to enjoy the beauty of the natural world. By reducing pollutants during the production process and creating efficient, low-emission vehicles, Subaru works to protect that beauty and the earth we all share.

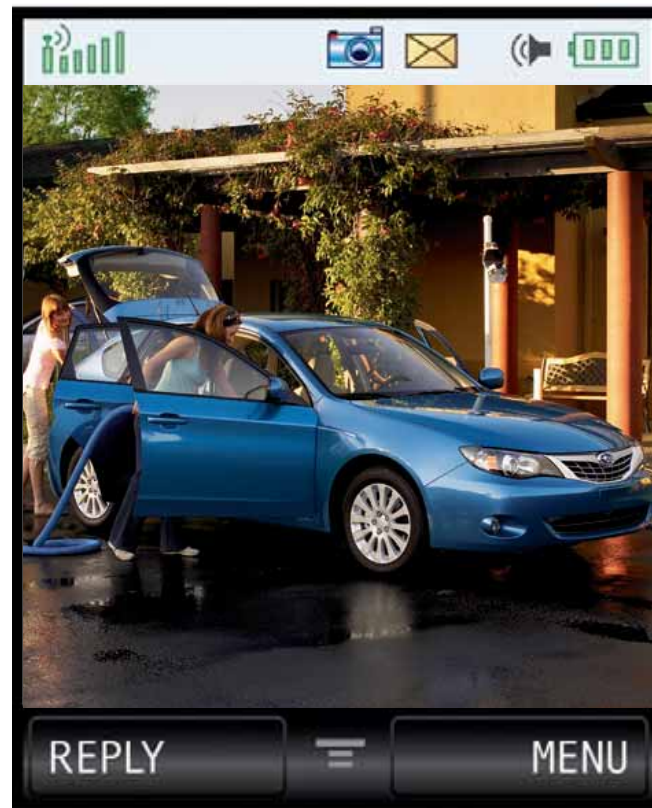


Your Subaru. **Your way.**



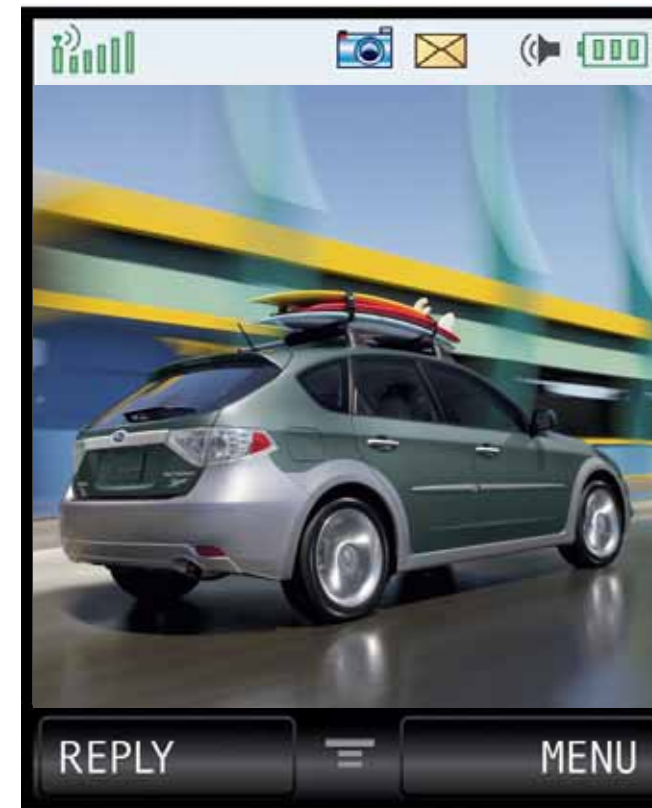
### Impreza 2.5i

All-in-one versatility with fun-to-drive features. And with a 170-horsepower engine, you won't miss a moment of the action. Choose from either the 4-door or 5-door, both with standard Subaru Symmetrical AWD and VDC electronic stability control.



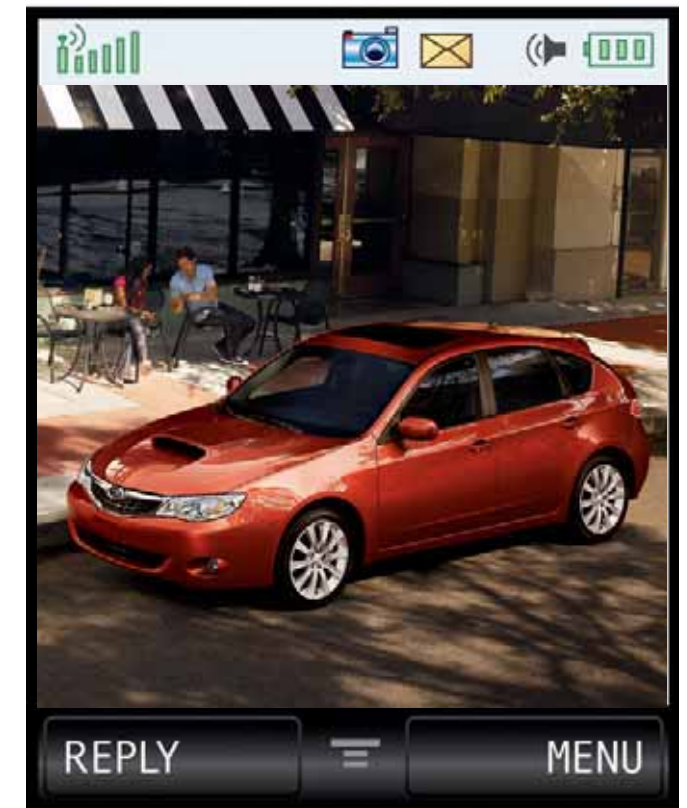
### Impreza 2.5i Premium

All the fun and versatility you expect but with even more extras. Adding a power moonroof, 16-inch aluminum wheels, leather-wrapped steering wheel and a 10-speaker audio system with auxiliary audio jack and 6-disc CD changer—just to name a few.



### Impreza Outback Sport

Impreza spirit infused with rugged versatility. The Outback Sport gives you a roof carrier base, 17-inch aluminum wheels, and a raised suspension for composure over rough roads.



### Impreza 2.5GT

New to the Impreza lineup, with turbocharging to up the fun factor. The 2.5GT comes standard with a 224-horsepower turbocharged SUBARU BOXER engine, moonroof, 17-inch aluminum wheels, heated front seats and a 10-speaker audio system with auxiliary audio jack and 6-disc CD changer.

## Impreza® 2.5i | Outback Sport® | 2.5GT Specifications

ENGINE AND DRIVETRAIN	2.5i AND 2.5i PREMIUM	OUTBACK SPORT	2.5GT
Engine	2.5-liter SOHC aluminum-alloy 16-valve horizontally opposed SUBARU BOXER® engine with i-Active Valve Lift System.		2.5-liter DOHC intercooled, turbocharged aluminum-alloy 16-valve 4-cylinder horizontally opposed SUBARU BOXER engine with Active Valve Control System.
Power	170 hp @ 6,000 rpm		224 hp @ 5,200 rpm
Torque	170 lb-ft @ 4,400 rpm		226 lb-ft @ 2,800 rpm
Compression ratio	10.0:1		8.4:1
Bore and stroke	99.5 x 79.0 mm		
Fuel and ignition system	Sequential multiport fuel injection. Electronic Throttle Control (ETC). Engine management with integrated self-diagnostics and adaptive driving habits capability. <b>2.5i</b> and <b>Outback Sport</b> : Distributorless electronic ignition. <b>2.5GT</b> : Direct ignition.		
Manual transmission	Standard fully synchronized 5-speed manual with Incline Start Assist		Not available
Automatic transmission	Optional 4-speed electronic direct-control automatic with SPORTSHIFT® manual control		Standard 4-speed electronically controlled automatic with SPORTSHIFT manual control
Emissions	Certified Low Emission Vehicle (LEV2)		Certified Low Emission Vehicle (LEV2)
<b>FUEL</b>			
Fuel economy (city/highway) <sup>1</sup>	Manual: 20/27 mpg Automatic: 20/26 mpg		19/24 mpg
Fuel requirement	Unleaded gasoline (87 octane)		Premium unleaded gasoline (91 octane)
<b>SYMMETRICAL ALL-WHEEL DRIVE</b>			
Continuous All-Wheel Drive	Models equipped with 5-speed manual transmission utilize a viscous-type locking center differential with torque distribution normally configured at a 50/50-split front-to-rear. If wheel speed differs between front and rear axles, the system helps distribute power to the wheels with the most traction.		
Active All-Wheel Drive	Models equipped with 4-speed automatic transmission utilize an electronically controlled variable transfer clutch to distribute power to where traction is needed. Sensors monitor parameters such as wheel slippage, throttle position and braking, to help determine power distribution and direct it to the wheels with optimum traction.		
<b>STABILITY AND TRACTION</b>			
Vehicle Dynamics Control (VDC)	VDC electronic stability control utilizes sensors which constantly monitor wheel speed, steering angle, brake pressure, vehicle yaw rate and lateral g-forces. If VDC detects a difference between the driver's intended path and the one the vehicle is actually taking, VDC applies braking power and/or reduces engine torque to help correct vehicle path.		
Traction Control System (TCS)	VDC also incorporates an all-wheel, all-speed traction control system which, when sensing a loss of traction, applies braking force and reduces engine torque to the slipping wheel or wheels as necessary to maintain vehicle motion.		
<b>CHASSIS</b>			
Steering	Engine-speed-sensing variable power-assisted rack-and-pinion. Turning circle: 34.8 feet.		
Suspension	<b>Front:</b> Strut-type with lower L-arm. <b>Rear:</b> Double wishbone. <b>2.5i:</b> 4-wheel independent suspension. Front stabilizer bar. <b>Outback Sport:</b> 4-wheel independent raised suspension. Front stabilizer bar. <b>2.5GT:</b> Sport-tuned 4-wheel independent suspension. Front and rear stabilizers.		
Brakes	4-wheel disc, ventilated front. 4-channel, 4-sensor ABS with Electronic Brake-force Distribution (EBD).		
Brake Assist	When emergency braking is detected by how quickly the brake pedal is pressed, maximum brake pressure is immediately applied.		
Brake discs (front/rear)	<b>2.5i, 2.5i Premium</b> and <b>Outback Sport:</b> 10.9 inches/11.3 inches <b>2.5GT:</b> 11.6 inches/11.3 inches		
<b>WHEELS AND TIRES</b>			
Wheels	<b>2.5i:</b> 16 x 6.5-inch steel with alloy wheel-look covers. <b>2.5i Premium:</b> 16 x 6.5-inch 12-spoke aluminum-alloy.	17 x 7.0-inch 6-spoke aluminum-alloy. High-luster finish.	17 x 7.0-inch 10-spoke aluminum-alloy
Tires	205/55 R16 M+S all-season		205/50 R17 M+S all-season
<b>EXTERIOR DIMENSIONS</b>			
Length	180.3 inches		173.8 inches
Width	68.5 inches		68.5 inches
Height	58.1 inches		58.3 inches <sup>2</sup>
Wheelbase	103.1 inches		103.1 inches
Track (front/rear)	58.9 inches/58.9 inches (2.5GT: 58.9 in./59.1 in.)		58.7 inches/58.9 inches
Base curb weight (manual/automatic)	<b>2.5i:</b> 3,075 lbs/3,141 lbs <b>2.5i Premium:</b> 3,097 lbs/3,163 lbs <b>2.5GT:</b> N/A/3,240 lbs		<b>2.5i:</b> 3,075 lbs/3,141 lbs <b>2.5i Premium:</b> 3,097 lbs/3,163 lbs <b>2.5GT:</b> N/A/3,240 lbs
<b>INTERIOR DIMENSIONS</b>			
Headroom (front/rear)	40.3 inches/37.6 inches (with moonroof: 39.3 inches/37.5 inches)		40.3 inches/37.6 inches (with moonroof: 39.3 inches/37.4 inches)
Legroom (front/rear)	43.5 inches/33.5 inches		43.5 inches/33.5 inches
Shoulder room (front/rear)	54.8 inches/53.2 inches		54.8 inches/53.2 inches
Passenger volume	94.6 cubic feet (with moonroof: 93.0 cubic feet)		94.6 cubic feet (with moonroof: 93.2 cubic feet)
Cargo volume	11.3 cubic feet		19.0 cubic feet (44.4 cubic feet with rear seat lowered)

## Impreza 2.5i | Outback Sport | 2.5GT Equipment

EXTERIOR	2.5i	2.5i PREMIUM	OUTBACK SPORT	2.5GT
Projector low-beam and multireflector high-beam halogen headlights	●	●	●	●
Foglights	-	●	●	●
L.E.D. taillights (5-door)	●	●	●	●
Functional hood scoop (feeds turbocharger intercooler)	-	-	-	●
Rear spoiler (5-door)	●	●	●	●
Body-color side mirrors	●	●	●	●
Heated side mirrors and windshield wiper de-icer	-	-	●	●
Body-color door handles	●	●	-	●
Chrome door handles	-	-	●	-
Two-speed windshield wipers with variable intermittent mode and mist feature	●	●	●	●
Single-speed rear window wiper with fixed intermittent mode (5-door)	●	●	●	●
Roof carrier base	-	-	●	-
Front and rear bumper underguards	-	-	●	-
Body-side moldings	-	-	●	-
Rear bumper step pad	-	-	●	-
Power tilt/sliding-glass moonroof	-	●	-	●
<b>SEATING AND TRIM</b>				
6-way manually adjustable driver's seat. 4-way manually adjustable front-passenger's seat.	●	●	●	●
Heated front seats	-	-	●	●
60/40-split flat-folding rear seatback	●	●	●	●
3-spoke steering wheel with cruise control buttons	●	-	-	-
Leather-wrapped 3-spoke steering wheel with audio system and cruise control buttons	-	●	●	●
Tilt steering column	●	●	●	-
Tilt/telescoping steering column	-	-	-	●
Leather-wrapped shifter handle	-	●	●	●
Tricot upholstery	●	●	-	-
Cloth upholstery	-	-	●	●
Light gray metallic trim on dash and console	●	●	●	-
Medium gray metallic trim on dash and console	-	-	-	●
<b>CONVENIENCE FEATURES</b>				
Power front and rear windows with driver's auto-down	●	●	●	●
Power side mirrors	●	●	●	●
Electronic cruise control	●	●	●	●
Dual cupholders in center console	●	●	●	●
Single bottle holder in each door panel	●	●	●	●
Sun visors with concealed vanity mirrors	●	●	●	●
Center console with L.E.D.-illuminated front storage tray and 12-volt power outlets	●	●	●	●
Illuminated and lockable glove box	●	●	●	●
Cargo-area grocery bag and tiedown hooks (5-door)	●	●	●	●
Retractable and removable cargo-area cover (5-door)	●	●	●	●
Removable cargo-area tray	-	-	●	-
<b>INSTRUMENTATION</b>				
Analog speedometer, tachometer, coolant temperature and fuel gauges	●	●	●	●
Sport-design electroluminescent gauges with center-mounted tachometer	-	-	-	●
Gauge needles full-sweep and trim rings illumination on start-up	●	●	●	●
Digital odometer and automatic transmission (when equipped) shift position indicator	●	●	●	●
Digital trip computer displaying average fuel economy, digital clock and ambient temperature	●	●	●	●
<b>AUDIO SYSTEMS</b>				
4-speaker audio system with single-disc in-dash CD player and MP3/WMA capability	●	-	-	-
10-speaker audio system with 6-disc in-dash CD changer, MP3/WMA capability and SRS Circle Surround Automotive® audio enhancement	-	●	●	●
Auxiliary audio jack	-	●	●	●
XM® or SIRIUS® Satellite Radio capability <sup>3</sup>	●	●	●	●
<b>CLIMATE CONTROL</b>				
Manually adjustable CFC-free air conditioning system with rotary controls for temperature, fan and airflow direction	●	●	●	-
Automatic climate control system with CFC-free air conditioning, rotary controls for temperature, fan and airflow direction	-	-	-	●

SECURITY	2.5i	2.5i PREMIUM	OUTBACK SPORT	2.5GT
Keyless entry system with answer-back electronic chirp	•	•	•	•
Antitheft security system	•	•	•	•
Engine immobilizer	•	•	•	•

## SAFETY

ACTIVE	2.5i	2.5i PREMIUM	OUTBACK SPORT	2.5GT
Subaru Symmetrical All-Wheel Drive (AWD)	•	•	•	•
SUBARU BOXER engine	•	•	•	•
4-wheel antilock braking system (ABS) with Electronic Brake-force Distribution (EBD)	•	•	•	•
Vehicle Dynamics Control (VDC)	•	•	•	•
Traction Control System (TCS)	•	•	•	•
Brake Assist	•	•	•	•
Tire Pressure Monitoring System (TPMS)	•	•	•	•
Daytime Running Lights (DRL)	•	•	•	•

## PASSIVE

Dual-stage deployment driver's and front-passenger's front airbags (SRS) <sup>4</sup>	•	•	•	•
Subaru advanced frontal airbag system (SRS) <sup>4</sup>	•	•	•	•
Side-curtain airbags protecting front and rear outboard occupants (SRS) <sup>4</sup>	•	•	•	•
Seat-mounted front side-impact airbags (SRS) <sup>4</sup>	•	•	•	•
Height-adjustable active front-seat head restraints	•	•	•	•
Height-adjustable 3-point front seatbelts with pretensioners and force limiters. 3-point seatbelts at all rear seating positions.	•	•	•	•
Rear child-safety door locks	•	•	•	•
LATCH system: Lower Anchors and Tethers for Children	•	•	•	•
Safety brake pedal system	•	•	•	•
Energy-absorbing collapsible steering column	•	•	•	•
Ring-shaped reinforcement frame body structure	•	•	•	•

## OPTIONAL EQUIPMENT

4-speed electronic direct-control automatic transmission with SPORTSHIFT manual control	◦	◦	◦	•
Satellite Radio and Navigation Package: Touch-screen GPS navigation system with 7-inch high-resolution screen and auxiliary inputs for portable multimedia devices, 10-speaker audio system with single-disc in-dash CD player, SIRIUS <sup>®</sup> Satellite Radio <sup>3</sup> and Bluetooth <sup>®</sup> wireless capability, <sup>6</sup> multifunction screen displaying navigation system information and trip computer (current and average fuel economy, driving range, ambient temperature, calculator and maintenance indicator)	-	◦	-	-

• Standard ◦ Optional - Not available

## Colors

### Paint



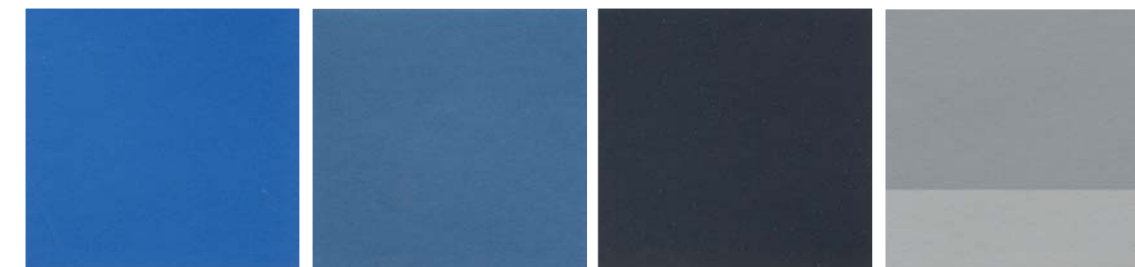
Satin White Pearl

Spark Silver Metallic

Sunlight Gold Opal

Paprika Red Pearl

Lightning Red

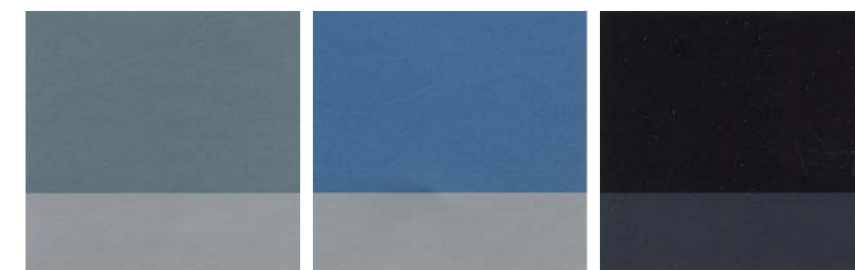


Newport Blue Pearl

Dark Gray Metallic

Obsidian Black Pearl

Steel Silver Metallic/  
Spark Silver Metallic

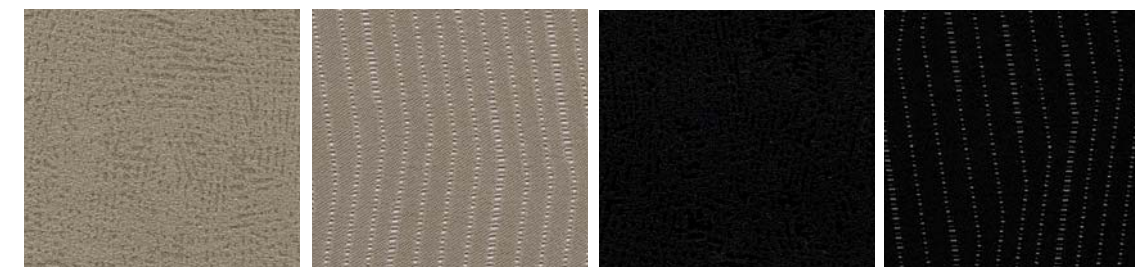


Sage Green Metallic/  
Steel Silver Metallic

Newport Blue Pearl/  
Steel Silver Metallic

Obsidian Black Pearl/  
Dark Gray Metallic

### Upholstery



Ivory Tricot  
(IT)

Ivory Cloth  
(IC)

Carbon Black Tricot  
(CBT)

Carbon Black Cloth  
(CBC)

## Impreza Color Combinations

PAINT	2.5i and 2.5i Premium	Outback Sport	2.5GT
Satin White Pearl	IT	-	CBC
Spark Silver Metallic	CBT	-	CBC
Sunlight Gold Opal	IT <sup>1</sup>	-	-
Paprika Red Pearl	IT	-	CBC
Lightning Red	CBT	-	CBC
Newport Blue Pearl	IT	-	CBC
Dark Gray Metallic	CBT	-	CBC
Obsidian Black Pearl	IT	-	CBC
Steel Silver Metallic/Spark Silver Metallic	-	CBC	-
Sage Green Metallic/Steel Silver Metallic	-	IC	-
Newport Blue Pearl/Steel Silver Metallic	-	IC	-
Obsidian Black Pearl/Dark Gray Metallic	-	CBC	-

- NOT AVAILABLE

<sup>1</sup> 5-door only

<sup>1</sup> 2009 EPA fuel economy estimates. Actual mileage may vary. <sup>2</sup> Does not include roof carrier base. <sup>3</sup> Available as an accessory. Satellite radio hardware and required monthly subscription sold separately. See your dealer. <sup>4</sup> The Supplemental Restraint System (SRS) affords the driver and the front passenger additional protection in moderate to severe frontal and side-impact collisions and outboard 2nd-row passengers additional protection in moderate to severe side-impact collisions. This system provides supplemental protection only, and seatbelts must be worn in order to avoid injuries to out-of-position occupants upon airbag deployment and to provide the best combined protection in a serious accident. Children should always be properly restrained in one of the rear seats. See Owner's Manual for recommended seating position. <sup>5</sup> Activation and required monthly subscription sold separately. See your dealer. <sup>6</sup> Requires accessory microphone. See your dealer.

Some images shown are for illustration purposes only. Specifications in this brochure are based on the latest product information available at the time of publication. For the most up-to-date product information, log on to [subaru.com](http://subaru.com). Some equipment shown in photography in this brochure is optional at extra cost. Specific options may be available only in combination with other options. Specific combinations of equipment or features may vary from time to time and by geographic area. Certain accessories and equipment may not be available at the time of publication. Subaru of America, Inc., reserves the right to change or discontinue at any time, without notice, prices, colors, materials, equipment, accessories, specifications, models and packages without incurring any obligation to make the same or similar changes on vehicles previously sold. Colors shown may vary due to reproduction and printing processes.

This brochure was prepared by Subaru of America, Inc. A warranty from Subaru of America, Inc., is available only on cars sold to the first retail purchaser through an authorized Subaru dealer in the continental U.S. or Alaska. Subaru, SUBARU BOXER, Added Security, Impreza and Outback Sport are registered trademarks. Bluetooth is a registered trademark of Bluetooth SIG, Inc. HomeLink is a registered trademark of Prince Corporation, a wholly owned subsidiary of Johnson Controls. Kelley Blue Book is a registered trademark of Kelley Blue Book Co., Inc. SIRIUS is a registered trademark of Sirius Satellite Radio Inc. SPORTSHIFT is a registered trademark of Prodrive Ltd. SRS Circle Surround Automotive is a registered trademark of SRS Labs, Inc. XM is a registered trademark of XM Satellite Radio Inc. For more information, contact your Subaru dealer or log on to [subaru.com](http://subaru.com).





### 1 All-Weather Floor Mats

Custom-fitted, heavy-gauge floor mats help protect your vehicle's carpet from sand, dirt and moisture.

Not intended for use over top of carpeted floor mats.

### 2 Bike Carrier—Roof Mounted

Each kit securely transports one bicycle. Lockable, padded jaws can hold bikes with 1"-3" downtubes.

Roof Carrier Base required. Consult vehicle owner's manual for total roof load limit.

### 3 Remote Engine Starter

Allows vehicle to be started by pushing a button from the convenience of home or the office (up to 400 feet away depending on obstructions) so that the vehicle's interior temperature is more comfortable upon entry (automatic transmission only).

### 4 Auto-Dimming Mirror with Compass and HomeLink®

Mirror darkens when headlights are detected from behind the vehicle. Includes electronic compass and three integrated HomeLink buttons which can be programmed to operate most garage-door openers and other HomeLink compatible devices.

### 5 Sport Mesh Grille

Features a bold metal mesh design that adds an aggressive look to both 4- and 5-door Impreza. Comes pre-painted and ready to install.

### 6 Body-Side Moldings

Color-matched moldings help protect the vehicle's doors from parking lot dings while attractively blending with the lines of the car.

### 7 Hood Protector

Matches contours of the hood and helps protect it from stone chips and bugs.

### 8 Deck Lid Spoiler

Enhances the performance look of 4-Door Impreza. Features an integrated LED brake light and comes pre-painted to match your Impreza.

### 9 Cargo Net—Rear Seat Back

Neatly holds cargo and prevents it from sliding while the vehicle is in motion. (5-Door)

### 10 Roof Cargo Carrier

Provides 13 cubic feet of lockable storage capacity. Opens from the rear to accommodate loading from three sides. An extended version is also available that provides 16 cubic feet of space.

### 11 iPod® Interface

Take your music, podcasts, and audiobooks on the road with the iPod® Interface. Control your iPod through the factory head unit and steering wheel controls (if equipped), while text displays artist, album, song, or playlist information. The dock connector is located in the center console compartment, freeing the interior of unsightly cables and keeping the iPod hidden while it's charging.

Not compatible with vehicles equipped with satellite radio. See [www.subaru.com/ipod](http://www.subaru.com/ipod) for complete details.

### 12 Bluetooth® Hands-Free Kit

Wirelessly connect your Bluetooth compatible cell phone with your Impreza using menu choices displayed on the navigation screen. Make and receive calls, store phone book information and more.

Available on vehicles equipped with navigation system only. Some Bluetooth phones may not be compatible. See [www.subaru.com/bluetooth](http://www.subaru.com/bluetooth) for details.



Make a Subaru your Subaru. From styling upgrades to storage solutions, you can outfit your vehicle to be as unique as your adventures. With genuine Subaru **accessories**, you'll have the versatility to take everything you need. And backed by a 3-year or 36,000-mile limited warranty, they're built with Subaru reliability in mind.

For a complete list of available accessories, visit your local Subaru dealer or log on to [subaru.com](http://subaru.com).



Your Subaru will be a vehicle you can love for years to come. That's the promise delivered by our comprehensive warranties, Roadside Assistance Program, and outstanding vehicle reliability. It's a promise attested to by the fact that 95% of Subaru vehicles sold in the past ten years are still on the road today.<sup>1</sup>

**Love. It's what makes a Subaru, a Subaru.**

#### Subaru Added Security

It's possibly the most important option you choose. Protect your investment with a Subaru® Added Security® extended service contract—the only one backed by Subaru of America, Inc. Ask your salesperson for coverage details and assistance in selecting the plan that's best for you—up to 7 years or 100,000 miles.

#### Subaru.com

Begin your Subaru experience right in your own home. Here, you can find extensive information, including specs, photos and reviews. Build your own Subaru, locate dealers, and schedule a test drive. After your purchase, activate your free My.Subaru site, where Subaru owners can track their vehicles' service histories, schedule service appointments, receive special offers exclusive to My.Subaru members, and much more.

#### The Subaru Roadside Assistance Program

This comprehensive package covers all 2009 Subaru vehicles during the first 3 years or 36,000 miles, whichever comes first. By calling the toll-free number in the Owner's Information Kit, Subaru owners can take advantage of any of the following benefits:

- 24-Hour Roadside Assistance, seven days a week, 365 days a year, throughout the United States.
- Emergency Towing Service to the nearest authorized Subaru dealer.
- Emergency Roadside Assistance for jump starts, gasoline (up to two gallons), flat tire change, emergency lockout service (lost key or key is locked in the vehicle), and emergency fluid replacement.

#### Powertrain Limited Warranty

5 years or 60,000 miles, whichever comes first.

#### Rust Perforation Limited Warranty

5 years, unlimited mileage.

#### New Car Limited Warranty

3 years or 36,000 miles, whichever comes first.

#### Wear Item Limited Warranty

3 years or 36,000 miles, whichever comes first. We cover you where others don't. Repairs to the following items will also be covered under warranty:

- Brake Pads
- Wiper Blades
- Clutch Linings
- Transmitter Batteries

#### Insurance Privileges for Subaru Owners

The driving experience is only one of the benefits of Subaru ownership. Through Subaru Advantage Insurance by Liberty Mutual, Subaru owners may be eligible for an exclusive rate on auto and home insurance just for owning a Subaru. To learn more about Subaru Advantage Insurance and the special features designed for Subaru owners, visit [subaru.com](http://subaru.com).

<sup>1</sup> Based on R. L. Polk & Co. registration data in the U.S. 1998 to July 2007.

I drive an Impreza 2.5i and have never had a better car in snow than this one • This is my fourth Subaru...I LOVE them to pieces • I have my new Subaru Impreza and I am so happy with it. Such thought was put into it. I am driving more than I ever do because it is such a pleasure to drive • My wife and I own a Subaru Impreza Outback Sport and I must say it is the best car I've ever driven • I live in the mountains and commute up and down the hill every day. The handling can't be beat by any other car I've ever driven up the hill • **The Subaru Impreza, in the words of those who own them** • The other day we were hit with a snowstorm and our AWD allowed us to maneuver as if it was a sunny spring day. At that moment, I decided I would be a Subaru owner for life • I'm such a big promoter of Subaru. I've talked two of my friends into getting them • Thanks so much for keeping us safe in our Impreza during an awful accident. In our car that day, we had a baby and our dog in the backseat. We all walked away with no sustained injuries • I can carry just about anything in my Impreza, it gets good gas mileage, and it just fits me. My Impreza has been a great car.



Love. It's what makes a Subaru, a Subaru.



subaru.com



This brochure was printed with vegetable-based inks and produced using a "Green Printing Process" and FSC standards. The Forest Stewardship Council (FSC) is an international organization that brings people together to find solutions which promote responsible stewardship of the world's forests and environments.

By producing this brochure in a green way rather than by traditional methods, we saved 111.77 fully grown trees; 47,478 gallons of water; 79,172,485 BTUs of energy; 5,253 lbs of solid waste; and 10,344 lbs of greenhouse gases!

This brochure is printed in the U.S.A. on recycled paper. ©  
©2008 Subaru of America, Inc. 09.IMP.SRB.525 (S-8271, 150,000, 9/08, CG)

## Free Manuals Download Website

<http://myh66.com>

<http://usermanuals.us>

<http://www.somanuals.com>

<http://www.4manuals.cc>

<http://www.manual-lib.com>

<http://www.404manual.com>

<http://www.luxmanual.com>

<http://aubethermostatmanual.com>

Golf course search by state

<http://golfingnear.com>

Email search by domain

<http://emailbydomain.com>

Auto manuals search

<http://auto.somanuals.com>

TV manuals search

<http://tv.somanuals.com>