



2009 | Impreza WRX | WRX STI



**Bringing the world together,  
one corner at a time.**





The 2009 Subaru Impreza WRX and WRX STI.

**Because you love the rush.**

Point A to point B doesn't even begin to describe it. You see an open stretch of tarmac as a blank canvas, and driving as a form of self-expression. You are not alone. G-force junkies can be found all over the world. And for years, untold numbers have been united by their passion for two incomparable high-performance cars: the WRX®, now bolder and badder—and its untamed sibling, the WRX STI®. Step behind the wheel and on the throttle of either, and you'll know exactly what has inspired so many.

**Elevating high performance by digging in the dirt.** Whether it's dodging snowdrifts in Sweden, taking flight at the X Games, or grinding gravel in Greece, to be the best in rally racing you have to be ready for extremes. The Impreza WRX and WRX STI put true performance in your hands with the quickness, agility and adaptability of the rally platform. It's a design that's better than fast—it's **smart**.

#### An Icon Forged in Competition

Legends don't happen by accident. They're made by being the best in design, engineering and driving; and coming out on top when the dust clears. The Subaru Impreza got its reputation by dominating competitions all over the world. The X Games, Rally America, and even the pinnacle of rally racing competition, the World Rally Championship, have all seen many Impreza victories. The power, agility and winning spirit of these champion cars live on inside every WRX and STI.

#### Continuing the Bloodline

From radical changes in body style to subtle suspension tweaks, Subaru Tecnica International—the high-performance wing of Subaru—takes the lessons learned in the crucible of rally competition and applies them to the WRX and its signature model, the STI. Each stage in the evolution of these models reflects what's needed on the race course to stay competitive in one of the most demanding motorsports on earth.





## It's more than a car. It's a culture.

**Speed knows no borders.** Performance goes beyond boundaries. From the freeways of L.A. to the back roads of Istanbul, you'll find WRX and WRX STI fans. United by a devotion to rally and a passion for high-performance driving, they come together from all corners of the globe to share in the language of fast. You are officially invited to take part in the movement. [fraternityofsti.com](http://fraternityofsti.com)



## 2 GUYS WITH A PH.D. IN OMG

Going from showroom to showtime. What SRT USA drivers Travis Pastrana and Ken Block do with a vehicle, most of us will only ever dream of. Yet, there's no better platform for these X Games superheroes than the Impreza WRX STI. Their competition vehicles may be modified, but the same control, response, and durability you get with a WRX or an STI help give these daredevil athletes what they need to redefine what's possible behind the wheel.



## Power

For generations, the Impreza WRX and WRX STI have outpaced the compromises of a conventional approach. Their famed SUBARU BOXER® engine is intensified with enhancements that make every firing of its spark plugs an explosion of emotion. Every breath is rush-delivered via intercooled turbocharging. The resulting torque and horsepower race to all four wheels with maximum efficiency for throttle response that reminds you every time why you love to drive.



### Turbocharger

If it's a WRX or an STI, its not-so-secret weapon is a turbocharger that helps to generate 265 force-fed horsepower for the WRX, and a whopping 305 horsepower for the STI. As always, the signature hood scoop is the real deal, supplying airflow to a lightweight intercooler that boosts output and response by enhancing the turbocharger's ability to deliver a potent fuel and air mixture.

### Subaru Boxer Engine

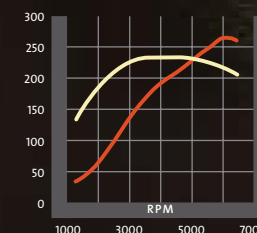
With pistons laid flat, the SUBARU BOXER engine offers drivers unique advantages. The pistons' movement helps reduce vibration for revs that come on buttery smooth. And the layout boasts a flatter profile and helps create a lower center of gravity for the entire car—increasing balance and stability for cornering characteristics that are one-of-a-kind.

### Active Valve Control System

While turbocharging boosts power by pumping more air into each cylinder, the Subaru Active Valve Control System (AVCS) on the WRX and Dual Active Valve Control System (DAVCS) on the STI make sure to deliver the air at precisely the right moment. Valve timing is adjusted to match engine rpm, for better response at any speed.

# 265

POWER (hp)



# 244

TORQUE (lb-ft)

## Horsepower

### GENTLEMEN, START YOUR DYNAMOMETERS

It's not just what you've got; it's how you use it. With an enhanced horsepower rating of 265, the 2009 WRX gives you a lot to work with. But follow the torque chart and you'll see the ability of the WRX to turn power into acceleration. Torque peaks at 244 lb-ft—more than any previous WRX—and continues over a wide power band. It's a punch that takes WRX from 0–60 mph in just 5.4 seconds! But you won't need a dyno, or even a stopwatch to appreciate it.

<sup>1</sup> Based on manufacturer's testing.

WRX 4-door in WR Blue Mica.

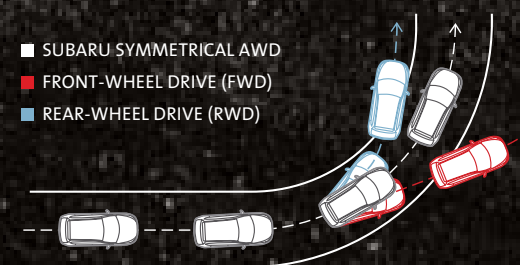
If you want to turn power into action, you need traction. Subaru has put more than 30 years into developing a traction system that delivers pavement grip and vehicle **control** unlike any other. The result, Subaru Symmetrical All-Wheel Drive, boasts almost total side-to-side symmetry for optimal balance and stability. What's more, it delivers power with brilliant efficiency for rapid response to slippage and to driver input.

why

# awd

## Exceptional Control

The Subaru Symmetrical All-Wheel Drive system, with its fore, aft and lateral balance, results in excellent handling overall. Unlike a rear-wheel drive car which may oversteer, or a front-wheel drive car that is more prone to understeer, the full-time symmetrical AWD of the WRX and WRX STI transfers power to all four wheels for more stable, neutral cornering. The result? Greater safety and intensified performance.



## Instantaneous Response

Only four small patches of rubber keep you in control of your vehicle. The more your tires are engaged, the more control you have. Unlike FWD or RWD vehicles, the Subaru Symmetrical AWD system keeps power routed to all four tires. So they're all ready to respond when you use the throttle, especially in tight curves or unexpected maneuvers.

## Road Adhesion

The greater the grip your tires have on the road, the more predictable your car becomes. With all four wheels receiving power all the time, chances are much more likely that none will be overpowered or spin freely, and your vehicle will stay on its intended trajectory. Think of it as prevention rather than reaction.





## Handling

You don't take on the menacing courses and brutal competition of the World Rally Championship without learning a thing or two about handling. With the intense grip of Subaru Symmetrical All-Wheel Drive and the poise and balance of the SUBARU BOXER engine, the WRX and WRX STI put intense control into the hands of drivers. Both are also equipped with a high-performance, 4-wheel independent suspension to further sharpen vehicle responsiveness. All this works to help driver and vehicle and road stay perfectly in sync for cornering that's pure inspiration.



### Powerful Braking

Impressive power must be matched with impressive stopping power. So the WRX and the STI are equipped with large disc brakes at all four wheels. The Antilock Braking System (ABS) is also standard equipment, along with Electronic Brake-force Distribution (EBD), which optimally reapportions stopping power to the front and rear wheels.

### Vehicle Dynamics Control (VDC)

Standard on every 2009 WRX and STI, the VDC electronic stability control system helps keep you on your intended path by measuring variables such as steering input and braking. If the system senses the vehicle deviating from your intended course, VDC applies individual brakes and/or reduces engine power to help keep you securely in control.

### Track-Tuned Suspension

The 2009 WRX features an enhanced, track-ready, 4-wheel independent suspension designed to eat up the world's greatest roads as well as handle the daily rigors of real-world driving. Front struts feature multiple-phase damping for an ideal balance of stability and precision. While the double wishbone rear suspension matches smoothness with control.



WRX 5-door in Spark Silver Metallic.



WRX 4-door with Carbon Black Checkered cloth.

## Interior

Functional and rewarding. Subaru insists your interior be both. Twist the key and illuminated red needles perform a full sweep of crisp electroluminescent gauges. Look—or feel—your way around the cockpit, and you'll find every detail is executed to connect you to your car, from a multifunction trip computer to an L.E.D.-illuminated storage area. And a tilt/telescoping leather-wrapped steering wheel puts available audio and standard cruise control buttons at your thumbs. It's a Subaru. Functional has to feel good.



### 60/40-Split Flat-Folding Rear Seatback

Performance matched with practicality has always been a hallmark of the WRX. Both the 4- and 5-door models feature the versatile 60/40-split fold-down rear seatback, which allows you to expand the cargo area, while still bringing along a rear-seat passenger or two.



### Touch-Screen Navigation System

Just a few taps on the high-resolution touch-screen of the available GPS navigation system and you'll have a co-pilot across town or across the country. When not in use, you can use the system as a calendar, a calculator, or to get information on your vehicle.

### Performance-Design Seats

Designed for hardcore driving and serious comfort, the front seats in the WRX and the STI are contoured for support around corners and down the road. Deep side bolsters help you handle lateral g-forces, and a height adjuster helps the driver find that perfect spot at the helm.

### Generous Cargo Space

The rear suspension of the WRX and STI doesn't just help it handle better—it helps it handle more. More cargo. More gear. The 4-door can take on three golf bags in its 11.3 cubic-foot trunk. The 5-door's remarkably wide cargo area boasts a maximum of 44.4 cubic feet of space, and features a standard retractable cover.

### 10-Speaker Audio System

Every epic drive needs an epic soundtrack to make it complete. With the available 10-speaker system, the crisp, crystal clarity of the SRS Circle Surround Automotive<sup>®</sup> audio enhancement turns every WRX seat into a sweet spot. And with available XM<sup>®</sup> or SIRIUS<sup>®</sup> Satellite Radio, you'll enjoy digital-quality programming wherever your epic drive takes you.<sup>1</sup>

### Auxiliary Audio and Video

Every WRX or STI comes standard with an audio jack for connecting a portable music player. And now the accessory iPod<sup>®</sup> Interface Kit, which allows you to charge your iPod<sup>®</sup> and control it through the head unit, is available at every trim level. Team this kit with the navigation system, and get enhanced interactivity. What's more, the nav system gives you audio/video jacks that let you plug in nearly any music, video, or gaming device. Park the car, and the video portion plays on the in-dash screen.

<sup>1</sup> Subscription and additional equipment required.

No matter how fast a vehicle gets you to your destination, the most important thing is that it gets you there in one piece. Subaru is committed to **protecting** passengers with multidimensional safety. So committed, that each and every Subaru model tested, when equipped with available VDC, was chosen as an IIHS 2008 Top Safety Pick.<sup>1</sup>



for front and side-impact collisions.<sup>2</sup>  
— National Highway Traffic Safety Administration

play

# safe

**Active Safety** | Trust. Subaru knows that this is the most important feeling to have when you get behind the wheel. You can drive with confidence knowing that Subaru engineers their vehicles to assist in keeping you safe by helping you avoid accidents. Exceptional visibility helps you see danger coming, and active technologies like Subaru AWD and a responsive suspension help you stay in control in an emergency.

**Passive Safety** | In a worst-case scenario, the Subaru Impreza is one of your best possible bets. Government crash testing recognizes the Impreza with a five-star crash-test safety rating.<sup>2</sup> Its brilliant track record in safeguarding passengers comes from an array of advanced protection technologies coupled to a body structure that is meticulously engineered to help save lives.

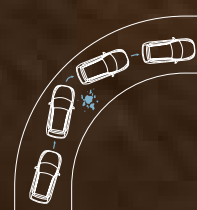
### Brake Assist

This feature helps provide safer braking in a panic stop. By sensing the speed with which the brake pedal is depressed, maximum brake pressure is immediately applied, even if your right foot doesn't supply enough force.



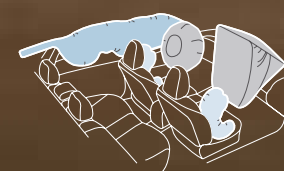
### Vehicle Dynamics Control (VDC)

Standard on every 2009 WRX and STI, VDC electronic stability control monitors the path of your vehicle to help detect unwanted deviations in your trajectory, and corrects them to keep you in control and on the right path.



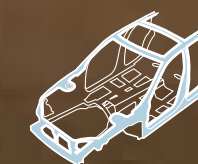
### Front, Side and Side-Curtain Airbags<sup>3</sup>

An array of sensors can deploy any one or more of the six airbags the instant an accident is detected. The WRX and the STI feature side-curtain airbags to better provide all-over protection for the driver, front passenger and outboard rear passengers.



### Ring-Shaped Reinforcement Frame

Exceptionally strong, the frame design of the WRX and the STI not only helps to maintain cabin integrity during a crash—it also helps divert dangerous impact energy away from occupants.



<sup>1</sup> Rating based on Insurance Institute for Highway Safety's (IIHS's) 40-mile-per-hour frontal crash test, 31-mile-per-hour side-impact test, and 20-mile-per-hour rear-impact test. For more information, contact IIHS or visit their website at [www.iihs.org](http://www.iihs.org).

<sup>2</sup> Star ratings are part of the U.S. Department of Transportation's [safercar.gov](http://www.safercar.gov) program ([www.safercar.gov](http://www.safercar.gov)).  
<sup>3</sup> Always wear seatbelts. Children should be properly restrained in the rear seat.

**16 years of rally experience,  
boiled down to 4.7 seconds.<sup>1</sup>**



**The 2009 WRX STI**

<sup>1</sup> 2008 WRX STI. Zero–60 mph. *Motor Trend*, March 2008.

WRX STI in Dark Gray Metallic with optional BBS® wheels and foglights.

Download from [www.Somanuals.com](http://www.Somanuals.com). All Manuals Search And Download.



### Intensified Power

A rush like none other. Turn the key, ignite the power plant and feel the intercooled, high-boost turbocharger spool up to unleash 305 horses, and 290 lb-ft of vicious torque sure to keep you firmly pinned to your seat. The SUBARU BOXER engine's low-slung and uniquely balanced design keeps all that power poised and agile for precision handling.



### Cutting-Edge Control

Experience response and control that's virtually telepathic. At the heart of the handling is a high-performance sport-tuned suspension ready to knife into hard maneuvers. Inverted struts up front add stability and cornering precision, and a rear suspension with double wishbone design helps eat up uneven roads without upsetting the chassis. Multi-mode Vehicle Dynamics Control (VDC), featuring the Traction mode, gives you the power to keep the handling razor-sharp while retaining the safety characteristics of VDC. And fat Brembo brakes help you keep a leash on the power and acceleration of the STI.



### Legendary Traction

Gravel. Tarmac. Dirt. Rain. Snow. Raced on virtually every surface, Subaru Symmetrical All-Wheel Drive has proven itself to produce pavement-rending grip and brilliantly efficient power delivery. When strapped to the STI, Subaru AWD results in traction that melts curves, and accelerates heartbeats.





### Navigation System

Find that epic mountain drive or that restaurant downtown. With the available navigation system, it takes just a few taps on the ultra-sharp, 7-inch screen and you're there. When you've finished your drive and parked, flip the screen up, slip in a DVD, and enjoy a movie.

### Customized Performance

The STI puts you in the driver's seat in more ways than one. With the exclusive Driver Controlled Center Differential (DCCD), you can define how Subaru AWD distributes power. Use three distinct automatic modes to fine tune the system for the road conditions you encounter, or use manual mode to create the handling characteristics you desire. A quick-shifting 6-speed manual gives you plenty of gearing room to match your driving style, and the innovative SI-DRIVE lets you tailor the way the engine behaves—from smooth and efficient to completely unrestrained.

### Performance-Design Front Seats

Deep leather bolsters and rich, grippy Alcantara inserts keep you in position and ready when g-forces take hold.

### Satellite Radio

Rock to hip hop. Stand-up comedy to sports commentary. Enjoy a vast array of digital-quality programming with available XM<sup>®</sup> or SIRIUS<sup>®</sup> Satellite Radio.<sup>1</sup>

## Impreza WRX® | WRX STI®

ENGINE AND DRIVETRAIN	WRX AND WRX PREMIUM	WRX STI	
Engine	2.5-liter DOHC intercooled, turbocharged aluminum-alloy 16-valve 4-cylinder horizontally opposed SUBARU BOXER® engine.		
Power	265 hp @ 6,000 rpm	305 hp @ 6,000 rpm	
Torque	244 lb-ft @ 4,000 rpm	290 lb-ft @ 4,000 rpm	
Compression ratio	8.4:1	8.2:1	
Bore and stroke	99.5 x 79.0 mm		
Valve timing	Active Valve Control System (AVCS)	Dual Active Valve Control System (DAVCS)	
Intake system	Turbocharger with intercooler. Maximum boost pressure: 13.3 psi.	Turbocharger with high-cross-flow-design intercooler. Maximum boost pressure: 14.7 psi.	
Fuel and ignition system	Sequential multiport fuel injection. Electronic Throttle Control (ETC). Engine management with integrated self-diagnostics and adaptive driving habits capability. Direct ignition.		
SI-DRIVE performance management system	Not available	Subaru Intelligent Drive (SI-DRIVE) enables three distinctively different modes of vehicle performance characteristics by regulating the engine control unit (ECU) and by fine-tuning the electronically controlled throttle.	
Transmission	Fully synchronized 5-speed manual with Incline Start Assist	Fully synchronized close-ratio 6-speed manual with Incline Start Assist	
Emissions	Certified Low Emission Vehicle (LEV2)		
FUEL			
Fuel economy (city/highway) <sup>1</sup>	18/25 mpg	17/23 mpg	
Fuel requirement	Premium unleaded gasoline (91 octane) required. 93 octane recommended (WRX STI).		
SYMMETRICAL ALL-WHEEL DRIVE			
Continuous All-Wheel Drive	WRX models utilize a viscous-type locking center differential with torque distribution normally configured at a 50/50-split front-to-rear. If wheel speed differs between front and rear axles, the system helps distribute power to the wheels with the most traction.		
Driver Controlled Center Differential (DCCD) All-Wheel Drive	Exclusive to WRX STI, Driver Controlled Center Differential (DCCD) All-Wheel Drive uses an electronically managed multi-plate transfer clutch and a mechanical limited-slip differential in conjunction with a planetary-gear-type center differential to control power distribution between the front and rear wheels. Featuring manual and three automatic modes, DCCD splits power 41% front and 59% rear. Sensors monitor parameters such as wheel slippage, steering angle, throttle position and braking to help determine torque distribution and direct it to the wheels with optimum traction. DCCD also features a limited-slip helical front and Torsen® rear differential.		
STABILITY AND TRACTION			
Vehicle Dynamics Control (VDC)	VDC electronic stability control utilizes sensors which constantly monitor wheel speed, steering angle, brake pressure, vehicle yaw rate and lateral g-forces. If VDC detects a difference between the driver's intended path and the one the vehicle is actually taking, VDC applies braking power and/or reduces engine torque to help correct vehicle path. Exclusive to WRX STI, VDC features Standard, Off and performance-oriented Traction modes.		
Traction Control System (TCS)	VDC also incorporates an all-wheel, all-speed traction control system which, when sensing a loss of traction, applies braking force and reduces engine torque to the slipping wheel or wheels as necessary to maintain vehicle motion.		
CHASSIS			
Steering	Engine-speed-sensing variable power-assisted rack-and-pinion. Turning circle, <b>WRX</b> : 35.4 feet. <b>WRX STI</b> : 36.1 feet.		
Suspension	Sport-tuned 4-wheel independent suspension. <b>Front</b> : Strut-type with lower L-arm. <b>Rear</b> : Double wishbone. Front and rear stabilizer bars.	High-performance sport-tuned 4-wheel independent suspension. <b>Front</b> : Inverted-strut-type with aluminum-alloy lower L-arm. <b>Rear</b> : Double wishbone. Front and rear stabilizer bars.	
Brakes	4-wheel disc, ventilated front. Dual-piston front and single-piston rear calipers. 4-channel, 4-sensor ABS with Electronic Brake-force Distribution (EBD). <b>Front</b> : 11.6 inches/ <b>Rear</b> : 11.3 inches	Brembo® performance braking system. 4-wheel disc, ventilated front and rear. 4-piston front and dual-piston rear calipers. 4-channel, 4-sensor Super Sport ABS with Electronic Brake-force Distribution (EBD). <b>Front</b> : 12.8 inches/ <b>Rear</b> : 12.4 inches	
Brake Assist	When emergency braking is detected by how quickly the brake pedal is pressed, maximum brake pressure is immediately applied.		
WHEELS AND TIRES			
Wheels	17 x 7.0-inch 10-spoke aluminum-alloy. Gray color.	18 x 8.5-inch 5-spoke aluminum-alloy. High-luster silver finish. Optional 18 x 8.5-inch 18-spoke BBS® aluminum-alloy. Silver or gold color. <sup>2</sup>	
Tires	225/45 R17 summer-performance	245/40 R18 93W ultra-high-performance	
EXTERIOR DIMENSIONS	WRX 4-DOOR	WRX 5-DOOR	WRX STI 5-DOOR
Length/Width/Height	180.3 inches/68.5 inches/58.1 inches	173.8 inches/68.5 inches/58.1 inches	173.8 inches/70.7 inches/58.1 inches
Wheelbase	103.1 inches	103.1 inches	103.3 inches
Track (front/rear)	58.9 inches/59.3 inches	58.9 inches/59.3 inches	60.2 inches/60.6 inches
Curb weight	<b>WRX</b> : 3,174 lbs   <b>WRX Premium</b> : 3,229 lbs	<b>WRX</b> : 3,175 lbs   <b>WRX Premium</b> : 3,229 lbs	3,395 lbs
INTERIOR DIMENSIONS			
Headroom (front/rear)	40.3 inches/37.6 inches (with moonroof: 39.3 inches/37.5 inches)	40.3 inches/37.6 inches (with moonroof: 39.3 inches/37.4 inches)	40.3 inches/37.6 inches
Legroom (front/rear)	43.5 inches/33.5 inches	43.5 inches/33.5 inches	43.5 inches/33.5 inches
Shoulder room (front/rear)	54.8 inches/53.2 inches	54.8 inches/53.2 inches	54.8 inches/53.2 inches
Passenger volume	94.6 cubic feet (with moonroof: 93.0 cubic feet)	94.6 cubic feet (with moonroof: 93.2 cubic feet)	94.6 cubic feet
Cargo volume	11.3 cubic feet	19.0 cubic feet (44.4 cubic feet with rear seat lowered)	19.0 cubic feet (44.4 cubic feet with rear seat lowered)

## Impreza WRX | WRX STI Equipment

EXTERIOR	WRX	WRX PREMIUM	WRX STI
Projector low-beam and multireflector high-beam halogen headlights	●	●	–
High-intensity discharge (HID) low-beam and multireflector halogen high-beam headlights	–	–	●
Foglights	–	●	○
L.E.D. taillights (5-door)	●	●	●
Functional hood scoop (feeds turbocharger intercooler)	●	●	●
Front underspoiler	●	●	–
STI-design front bumper with integrated spoiler	–	–	●
Aerodynamic side ground effects	●	●	●
Rear underspoiler (4-door)	●	●	–
Rear bumper with integrated diffuser (5-door)	●	●	●
Rear spoiler	●	●	●
Exhaust system with dual outlets (4-door)	●	●	–
Exhaust system with single outlet (5-door)	●	●	–
STI high-performance-tuned exhaust system with quad stainless-steel outlets	–	–	●
Body-color side mirrors	●	●	●
Heated side mirrors and windshield wiper de-icer	–	●	–
Body-color door handles	●	●	●
Two-speed windshield wipers with variable intermittent mode and mist feature	●	●	●
Single-speed rear window wiper with fixed intermittent mode (5-door)	●	●	●
Power tilt/sliding-glass moonroof	–	●	–

### SEATING AND TRIM

6-way manually adjustable driver's seat. 4-way manually adjustable front-passenger's seat.	●	●	●
Performance-design front seats with fixed integrated head restraints, embroidered WRX logos and red stitching	●	●	–
Performance-design front seats with fixed integrated head restraints and embroidered STI logos	–	–	●
Heated front seats	–	●	–
60/40-split flat-folding rear seatback	●	●	●
Leather-wrapped 3-spoke steering wheel with cruise control buttons and red stitching	●	–	–
Leather-wrapped 3-spoke steering wheel with audio system, cruise control buttons and red stitching	–	●	–
STI-design leather-wrapped 3-spoke steering wheel with audio system and cruise control buttons	–	–	●
Leather-wrapped shifter handle	●	●	●
Cloth upholstery	●	●	–
Alcantara®/leather upholstery	–	–	●
Aluminum-alloy pedal covers	●	●	●

### CONVENIENCE FEATURES

Power front and rear windows with driver's auto-down	●	●	●
Power side mirrors	●	●	●
Electronic cruise control	●	●	●
Tilt/telescoping steering column	●	●	●
Dual cupholders in center console	●	●	●
Single bottle holder in each door panel	●	●	●
Sun visors with concealed vanity mirrors	●	●	●
Center console with L.E.D.-illuminated storage tray and 12-volt power outlets	●	●	●
Illuminated and lockable glovebox	●	●	●
Footwell illumination lighting	–	–	●
Cargo-area grocery bag and tiedown hooks (5-door)	●	●	●
Retractable/removable cargo-area cover (5-door)	●	●	●

### INSTRUMENTATION

Analog speedometer, tachometer, coolant temperature and fuel gauges	●	●	●
Sport-design electroluminescent gauges with center-mounted tachometer	●	●	–
STI sport-design electroluminescent gauges with center-mounted tachometer	–	–	●
Gauge needles full-sweep and trim rings illumination on start-up	●	●	●
Digital trip computer displaying average fuel economy, digital clock and ambient temperature	●	●	●
DCCD and SI-DRIVE modes display	–	–	●

### AUDIO SYSTEMS

4-speaker audio system with single-disc in-dash CD player and MP3/WMA capability	●	–	–
10-speaker audio system with 6-disc in-dash CD changer, MP3/WMA capability and SRS Circle Surround Automotive® audio enhancement	–	●	●
Auxiliary audio jack	●	●	●
XM® or SIRIUS® Satellite Radio capability <sup>3</sup>	●	●	●



CLIMATE CONTROL	WRX	WRX PREMIUM	WRX STI
Automatic climate control system with CFC-free air conditioning and rotary controls for temperature, fan and airflow direction	•	•	•
<b>SECURITY</b>			
Keyless entry system with answer-back electronic chirp	•	•	•
Antitheft security system	•	•	•
Engine immobilizer	•	•	•
<b>SAFETY</b>			
<b>ACTIVE</b>			
Subaru Symmetrical All-Wheel Drive (AWD)	•	•	•
SUBARU BOXER engine	•	•	•
Vehicle Dynamics Control (VDC)	•	•	•
Traction Control System (TCS)	•	•	•
Brake Assist	•	•	•
4-wheel antilock braking system (ABS) with Electronic Brake-force Distribution (EBD)	•	•	•
Tire Pressure Monitoring System (TPMS)	•	•	•
Daytime Running Lights (DRL)	•	•	•
<b>PASSIVE</b>			
Dual driver's and front-passenger's front airbags (SRS) <sup>4</sup>	•	•	•
Subaru advanced frontal airbag system (SRS) <sup>4</sup>	•	•	•
Side-curtain airbags protecting front and rear outboard occupants (SRS) <sup>4</sup>	•	•	•
Seat-mounted front side-impact airbags (SRS) <sup>4</sup>	•	•	•
Height-adjustable 3-point front seatbelts with pretensioners and force limiters. 3-point seatbelts at all rear seating positions.	•	•	•
Rear child-safety door locks	•	•	•
Safety pedal system	•	•	•
Energy-absorbing collapsible steering column	•	•	•
Ring-shaped reinforcement frame body structure	•	•	•
<b>OPTIONAL EQUIPMENT</b>			
Satellite Radio and Navigation Package: Touch-screen GPS navigation system with 7-inch high-resolution screen and auxiliary inputs for portable multimedia devices, 10-speaker audio system with single-disc in-dash CD player and Audyssey MultEQ <sup>®</sup> audio enhancement, SIRIUS <sup>®</sup> Satellite Radio <sup>3</sup> and Bluetooth <sup>®</sup> wireless capability, <sup>5</sup> multifunction screen displaying navigation system information and trip computer (current and average fuel economy, driving range, calculator and maintenance indicator)	-	◦	-
18-inch BBS 18-spoke aluminum-alloy wheels and foglights	-	-	◦
18-inch BBS 18-spoke aluminum-alloy wheels and foglights, touch-screen GPS navigation system with 7-inch high-resolution screen and auxiliary inputs for portable multimedia devices, 10-speaker audio system with single-disc in-dash CD player and Audyssey MultEQ <sup>®</sup> audio enhancement, Bluetooth wireless capability, <sup>5</sup> multifunction screen displaying navigation system information and trip computer (current and average fuel economy, driving range, calculator and maintenance indicator)	-	-	◦

• Standard ◦ Optional - Not available

## Colors

### Paint



Satin White Pearl



Spark Silver Metallic



Lightning Red



WR Blue Mica

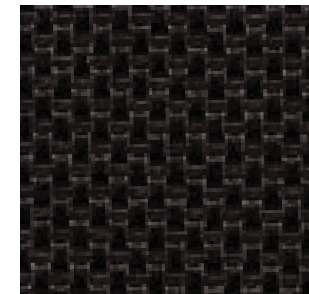


Dark Gray Metallic



Obsidian Black Pearl

### Upholstery



Carbon Black Checkered Cloth (CBCC)



Graphite Gray Alcantara<sup>®</sup>/  
Carbon Black Leather (GGA)

## Impreza WRX Color Combinations

PAINT	WRX and WRX Premium	WRX STI
Satin White Pearl	CBCC	GGA
Spark Silver Metallic	CBCC	GGA
Lightning Red	CBCC	GGA
WR Blue Mica	CBCC	GGA
Dark Gray Metallic	CBCC	GGA
Obsidian Black Pearl	CBCC	GGA

<sup>1</sup> 2009 EPA fuel economy estimates. Actual mileage may vary. <sup>2</sup> Silver color with Spark Silver Metallic, Lightning Red, Dark Gray Metallic and Obsidian Black Pearl. Gold color with Satin White Pearl and WR Blue Mica.

<sup>3</sup> Available as an accessory. Satellite radio hardware and required monthly subscription sold separately. See your dealer. SIRIUS Satellite Radio hardware standard (required monthly subscription sold separately) on WRX Premium when equipped with optional navigation system. <sup>4</sup> The Supplemental Restraint System (SRS) affords the driver and the front passenger additional protection in moderate to severe frontal and side-impact collisions and outboard 2nd-row passengers additional protection in moderate to severe side-impact collisions. This system provides supplemental protection only, and seatbelts must be worn in order to avoid injuries to out-of-position occupants upon airbag deployment and to provide the best combined protection in a serious accident. Children should always be properly restrained in one of the rear seats. See Owner's Manual for recommended seating position. <sup>5</sup> Requires accessory microphone. See your dealer.

Some images shown are for illustration purposes only. Specifications in this brochure are based on the latest product information available at the time of publication. For the most up-to-date product information, log on to [subaru.com](http://subaru.com). Some equipment shown in photography in this brochure is optional at extra cost. Specific options may be available only in combination with other options. Specific combinations of equipment or features may vary from time to time and by geographic area. Certain accessories and equipment may not be available at the time of publication. Subaru of America, Inc., reserves the right to change or discontinue at any time, without notice, prices, colors, materials, equipment, accessories, specifications, models and packages without incurring any obligation to make the same or similar changes on vehicles previously sold. Colors shown may vary due to reproduction and printing processes.

This brochure was prepared by Subaru of America, Inc. A warranty from Subaru of America, Inc., is available only on cars sold to the first retail purchaser through an authorized Subaru dealer in the continental U.S. or Alaska. Subaru, SUBARU BOXER, Added Security, Impreza, STI and WRX are registered trademarks. iPod is a registered trademark of Apple Inc. SRS Circle Surround Automotive is a registered trademark of SRS Labs, Inc. Audyssey MultEQ is a registered trademark of Audyssey Laboratories, Inc. Brembo is a registered trademark of Freni Brembo S.p.A. Alcantara is a registered trademark of Alcantara S.p.A. and Alcantara is produced by Toray Group. TORSEN is a registered trademark of JTEKT Corporation. BBS is a registered trademark of BBS Kraftfahrzeugtechnik AG. XM is a registered trademark of XM Satellite Radio Inc. SIRIUS is a registered trademark of Sirius Satellite Radio Inc. Bluetooth is a registered trademark of Bluetooth SIG, Inc. HomeLink is a registered trademark of Prince Corporation, a wholly owned subsidiary of Johnson Controls. For more information, contact your Subaru dealer or log on to [subaru.com](http://subaru.com).



1



2



3



4



5



6



7



8



9



10



11



12

### 1 Fog Light Kit

Casts a low and wide beam of light to enhance vision in inclement weather.

### 2 Sport Mesh Grille

Bold metal mesh design grille comes pre-painted and ready to install. Available with or without STI logo.

### 3 Body-Side Moldings

Color-matched moldings help protect the vehicle's doors from parking lot dings while attractively blending with the lines of the car.

### 4 Exhaust Finisher

Aluminum trim pieces add a serious performance look to the rear of WRX STI.

### 5 Roof Carrier Base

Can be installed or removed in minutes without the use of any tools. Fits both 4- and 5-door models and is compatible with most Genuine Subaru roof carriers and attachments.

Consult vehicle owner's manual for total roof load limit.

### 6 SPT Performance Exhaust System

These exhaust systems feature full stainless steel construction with smooth mandrel bends for low restriction and that famous boxer engine sound.

WRX 4-door system shown. Available for WRX 4-door and 5-door.

### 7 Rear Cargo Tray

Helps protect cargo area from dirt and spills. Can be easily removed and rinsed clean.

### 8 iPod® Interface

Take your music, podcasts, and audiobooks on the road with the iPod® Interface. Control your iPod through the factory head unit and steering wheel controls (if equipped), while text displays artist, album, song, or playlist information. The dock connector is located in the center console compartment, freeing the interior of unsightly cables and keeping the iPod hidden while it's charging.

Not compatible with vehicles equipped with satellite radio. See [www.subaru.com/ipod](http://www.subaru.com/ipod) for complete details.

### 9 Footwell Illumination

Casts a groovy blue glow onto the front floor area. Also available in red.

### 10 Auto-Dimming Mirror with Compass and HomeLink®

Mirror darkens when headlights are detected from behind the vehicle. Includes electronic compass and three integrated HomeLink buttons which can be programmed to operate most garage-door openers and other HomeLink compatible devices.

### 11 Bluetooth® Hands-Free Kit

Wirelessly connect your Bluetooth compatible cell phone with your Impreza using menu choices displayed on the navigation screen. Make and receive calls, store phone book information and more.

Available on vehicles equipped with navigation system only. Some Bluetooth phones may not be compatible. See [www.subaru.com/bluetooth](http://www.subaru.com/bluetooth) for details.

### 12 Short-Throw Shifter

Significantly reduces shift throw lengths for crisper shifts and sportier driving feel. Available for both 5 M/T and 6 M/T transmissions.

Make a Subaru your Subaru. From styling upgrades to storage solutions, you can outfit your vehicle to be as unique as your adventures. With genuine Subaru **accessories**, you'll have the versatility to take everything you need. And backed by a 3-year or 36,000-mile limited warranty, they're built with Subaru reliability in mind.

For a complete list of available accessories, visit your local Subaru dealer or log on to [subaru.com](http://subaru.com).



Your Subaru will be a vehicle you can love for years to come. That's the promise delivered by our comprehensive warranties, Roadside Assistance Program, and outstanding vehicle reliability. It's a promise attested to by the fact that 95% of Subaru vehicles sold in the past ten years are still on the road today.<sup>1</sup>

**Love. It's what makes a Subaru, a Subaru.**

#### Subaru Added Security

It's possibly the most important option you choose. Protect your investment with a Subaru® Added Security® extended service contract—the only one backed by Subaru of America, Inc. Ask your salesperson for coverage details and assistance in selecting the plan that's best for you—up to 7 years or 100,000 miles.

#### Subaru.com

Begin your Subaru experience right in your own home. Here, you can find extensive information, including specs, photos and reviews. Build your own Subaru, locate dealers, and schedule a test drive. After your purchase, activate your free My.Subaru site, where Subaru owners can track their vehicles' service histories, schedule service appointments, receive special offers exclusive to My.Subaru members, and much more.

#### The Subaru Roadside Assistance Program

This comprehensive package covers all 2009 Subaru vehicles during the first 3 years or 36,000 miles, whichever comes first. By calling the toll-free number in the Owner's Information Kit, Subaru owners can take advantage of any of the following benefits:

- 24-Hour Roadside Assistance, seven days a week, 365 days a year, throughout the United States.
- Emergency Towing Service to the nearest authorized Subaru dealer.
- Emergency Roadside Assistance for jump starts, gasoline (up to two gallons), flat tire change, emergency lockout service (lost key or key is locked in the vehicle), and emergency fluid replacement.

#### Powertrain Limited Warranty

5 years or 60,000 miles, whichever comes first.

#### Rust Perforation Limited Warranty

5 years, unlimited mileage.

#### New Car Limited Warranty

3 years or 36,000 miles, whichever comes first.

#### Wear Item Limited Warranty

3 years or 36,000 miles, whichever comes first. We cover you where others don't. Repairs to the following items will also be covered under warranty:

- Brake Pads
- Wiper Blades
- Clutch Linings
- Transmitter Batteries

#### Insurance Privileges for Subaru Owners

The driving experience is only one of the benefits of Subaru ownership. Through Subaru Advantage Insurance by Liberty Mutual, Subaru owners may be eligible for an exclusive rate on auto and home insurance just for owning a Subaru. To learn more about Subaru Advantage Insurance and the special features designed for Subaru owners, visit [subaru.com](http://subaru.com).

<sup>1</sup> Based on R. L. Polk & Co. registration data in the U.S. 1998 to July 2007.

Just picked up my new STI; it looks amazing • There's a lot of cars that have a lot of power, but the WRX puts the power to the pavement, where it counts • A little while ago, I traded my Subaru for another sport compact. What a huge mistake! I can't wait for the time I can own another Subaru • Subaru AWD makes the STI an absolute beast on the track • **The Impreza WRX and WRX STI in the words of those who own them** • Those who know, appreciate the legacy behind a WRX. And it gets respect • Sure it's fast, but I really love the interior, too. It's much more sophisticated than some competitors • I love the reliability of my Scooby, and I certainly don't want a car I'm going to have to take to the shop every two weeks. I buy a car to drive, not to repair! • You only have to drive a WRX for maybe an hour or two, and you'll know—it's one incredible car • A friend of mine was looking at some other car, but I helped him see the error of his ways • I want more than just a straight-line car, and my STI handles like it's on rails • It's fast, I can drive it in the snow, and it has a really cool community of owners, too • When I drove up, my mom was a little surprised. She said, 'I didn't know Subaru made cars like this.' I didn't tell her the horsepower rating • I don't drive it for the attention (though it gets a lot). I drive it because I love to drive.



Love. It's what makes a Subaru, a Subaru.



subaru.com



This brochure was printed with vegetable-based inks and produced using a "Green Printing Process" and FSC standards. The Forest Stewardship Council (FSC) is an international organization that brings people together to find solutions which promote responsible stewardship of the world's forests and environments.

By producing this brochure in a green way rather than by traditional methods, we saved 89.96 fully grown trees; 38,213 gallons of water; 63,722,715 BTUs of energy; 4,228 lbs of solid waste; and 8,325 lbs of greenhouse gases!

This brochure is printed in the U.S.A. on recycled paper. ©  
©2008 Subaru of America, Inc. 09.WRX.5RB.525 (S-8272, 120,000, 9/08, CG)

## Free Manuals Download Website

<http://myh66.com>

<http://usermanuals.us>

<http://www.somanuals.com>

<http://www.4manuals.cc>

<http://www.manual-lib.com>

<http://www.404manual.com>

<http://www.luxmanual.com>

<http://aubethermostatmanual.com>

Golf course search by state

<http://golfingnear.com>

Email search by domain

<http://emailbydomain.com>

Auto manuals search

<http://auto.somanuals.com>

TV manuals search

<http://tv.somanuals.com>