

# **PARTS MANUAL**

**Model**

**RG3200iS  
Generator**

PUB-GP6024  
Rev. 06/04

# **Robin America, Inc.**

940 Lively Blvd. • Wood Dale, IL 60191 • Phone: 630-350-8200 • Fax: 630-350-8212  
e-mail: [sales@robinamerica.com](mailto:sales@robinamerica.com) • [www.robinamerica.com](http://www.robinamerica.com)

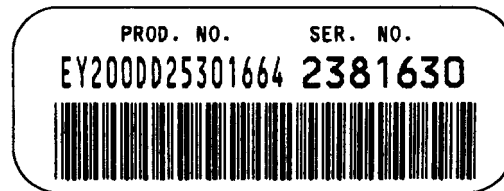
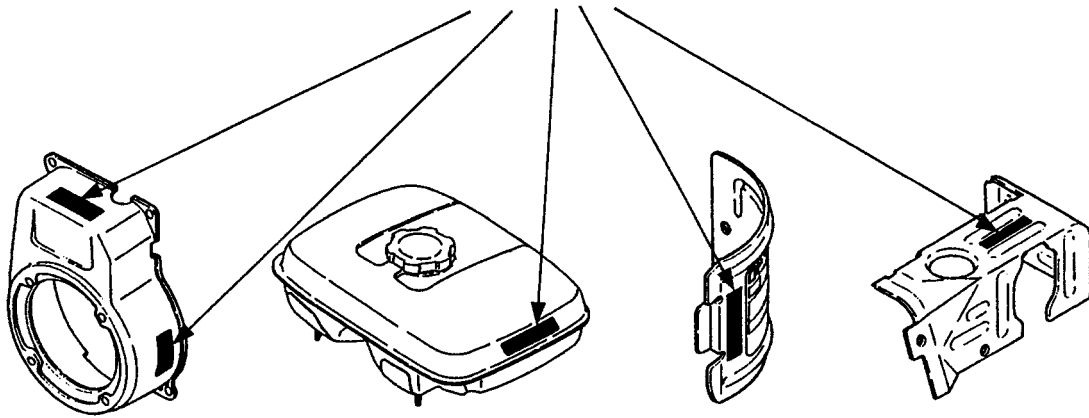
© Copyright 2004 Robin America, Inc.

## HOW TO USE THIS MANUAL

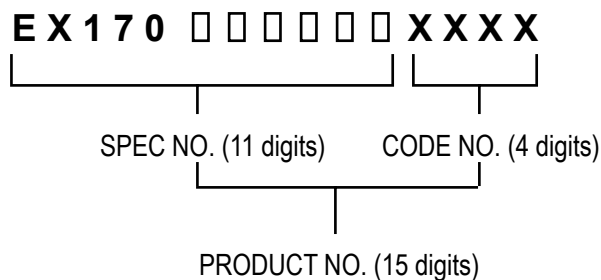
Robin engines are identified by MODEL, SPECIFICATION, and CODE NUMBER. For each model there may be many different versions called specifications. Each specification will be unique in some way. The difference may only be the paint color or it may have a different type of PTO or some other significant difference.

In order to identify the correct service part number, it is important to confirm the specification and code numbers for your engine. The specification and code number together are known as the PRODUCT NUMBER.

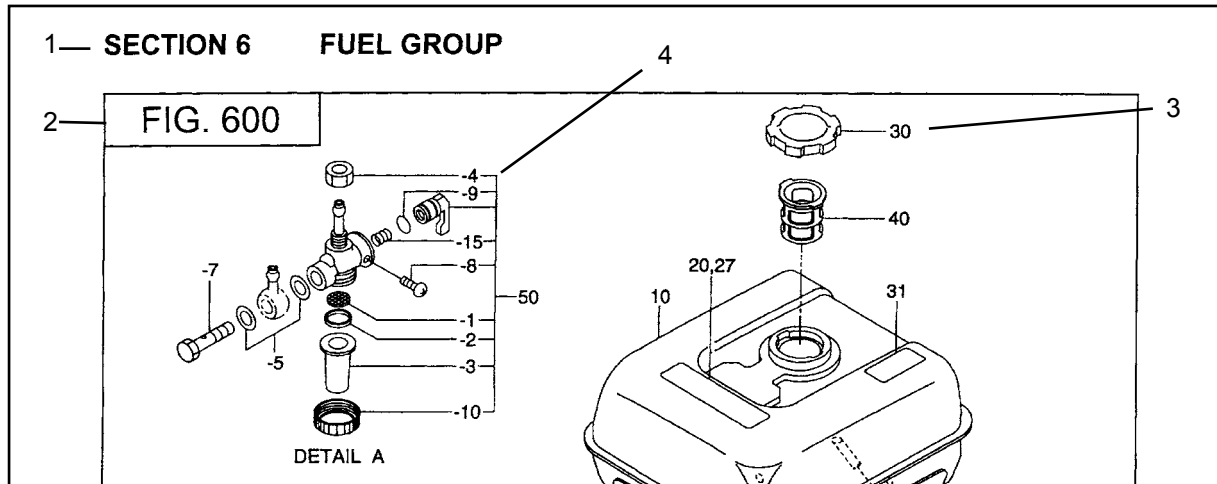
All Robin 4 cycle engines have a Product Number label similar to the label illustrated below.



The Product Number Label has a 15 digit alphanumeric string that consists of the SPECIFICATION (SPEC) number (11 digits) and the CODE number (4 digits). Please note the illustration below:



# MANUAL LAYOUT



REF.	PART NO.	DESCRIPTION	QTY.	REMARKS	FROM-TO	FIG.
10	267-60103-01	FUEL TANK CP	1	YD, YS TYPE, BLACK		600
	267-60101-01	FUEL TANK CP	1	YELLOW		600
27	073-20039-00	LABEL, WARNING	1	YD, YS TYPE		600
30	043-04300-15	FUEL TANK CAP CP	1			600
31	267-95201-03	LABEL, EMISSION	1	YD, YS TYPE		600
40	064-13600-10	FUEL FILTER	1			600
50	064-20021-01	FUEL STRAINER AY	1			600
-1	064-20002-20	FILTER	1			600
-2	064-20002-30	GASKET	1			600
-3	064-20019-10	CUP	1			600

1. SECTION NAME Parts are broadly classified according to their functions. Refer to the Group Index (table of contents) for respective section name.
2. FIG. No. The FIG. number indexes the reference and part numbers to the illustration. Figure numbers that vary only in the tens place (i.e.: 700 and 710) are in a group of the same section (i.e.:Electrical Device Group).
3. REF. No . The Reference number identifies the part illustration with the corresponding part number in the part list.
4. SUBASSEMBLY SUBASSEMBLY parts of part assembly are listed below the assembly part. The subassembly part reference number is indicated by the number led by "-" such as "-1", "-2".
5. PART NUMBER It is the number assigned for sales unit. Use the PART No. when making an order.
6. DESCRIPTION It is designation of the part.
7. QTY. Quantity of each part used for each product.
8. REMARKS This gives a distinctive feature and/or a supplementary comment for the type, the specification, and the part concerned. It also shows part number(s) interchangeable for the part.
9. FROM-TO This section shows the CODE No. to indicate the history of progress in which improved parts have been introduced in the product. The FROM-TO CODE No. helps to identify PART No. being employed in the product concerned. See the examples below:
  - The part is used in the product irrespective of CODE No.
  - 2101- The part is used in the products with CODE No. of 2101 and after this number.
  - 2100 The part is used in the products with CODE No. of 2100 and before this number.

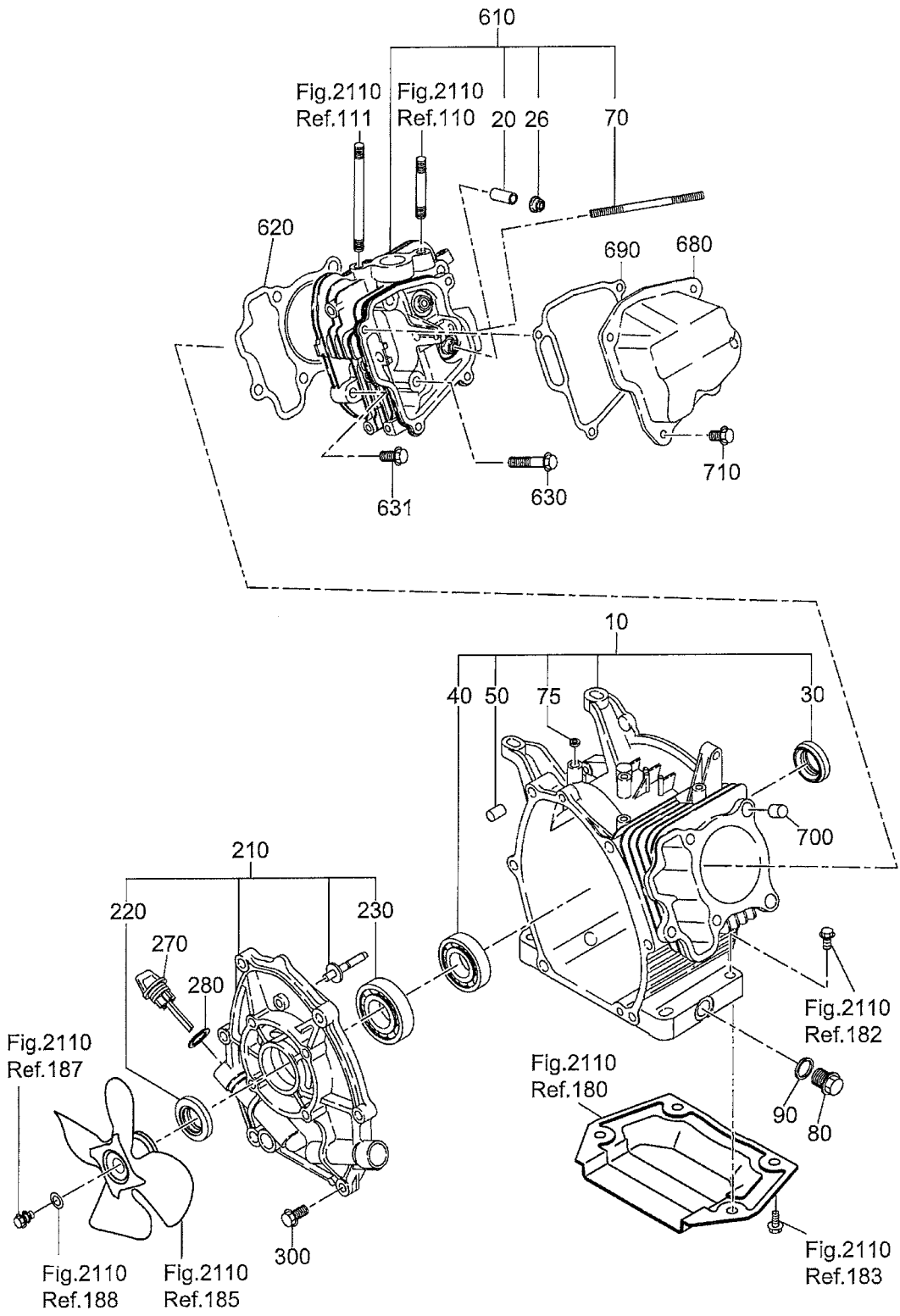
# GROUP INDEX

Group Name	Page
CRANKCASE .....	6
CRANKSHAFT, PISTON .....	8
INTAKE, EXHAUST .....	10
GOVERNOR, OPERATION.....	12
COOLING, STARTING .....	14
ELECTRIC DEVICE .....	16
ENGINE.....	18
GENERATOR .....	20
BASE, FRAME .....	22
CONTROL.....	26
COVER.....	28
FUEL TANK .....	30
ACCESSORY GROUP .....	32

INDEX OF DESCRIPTION SYMBOLS			
SYMBOL	DESCRIPTION	SYMBOL	DESCRIPTION
AY .....	ASSEMBLY	P= .....	PITCH (in mm)
CP.....	COMPLETE	P.T.O. (PTO) .....	POWER TAKE OFF
EX.....	EXPORT (from Japan)	REF.....	REFERENCE
FIG.....	FIGURE	R.H. (RH).....	RIGHT HAND SIDE
FR.....	FRONT	RR.....	REAR
" .....	INCH	STD. ....	STANDARD
INCL. ....	INCLUDE	SW.....	SWITCH
~L.....	LITER	T= .....	THICKNESS (in mm)
L= .....	LENGTH (in. mm)	UN .....	UNIT
L.H. (LH).....	LEFT-HAND SIDE	U.S.....	UNDER SIZE
MECH.....	MECHANICAL	~V .....	VOLTAGE
NO (NON).....	NONE	~W .....	WATT
OPT.....	OPTIONAL	W/ .....	WITH
O.S. ....	OVER SIZE	W/O .....	WITHOUT

SECTION 1 CRANKCASE GROUP

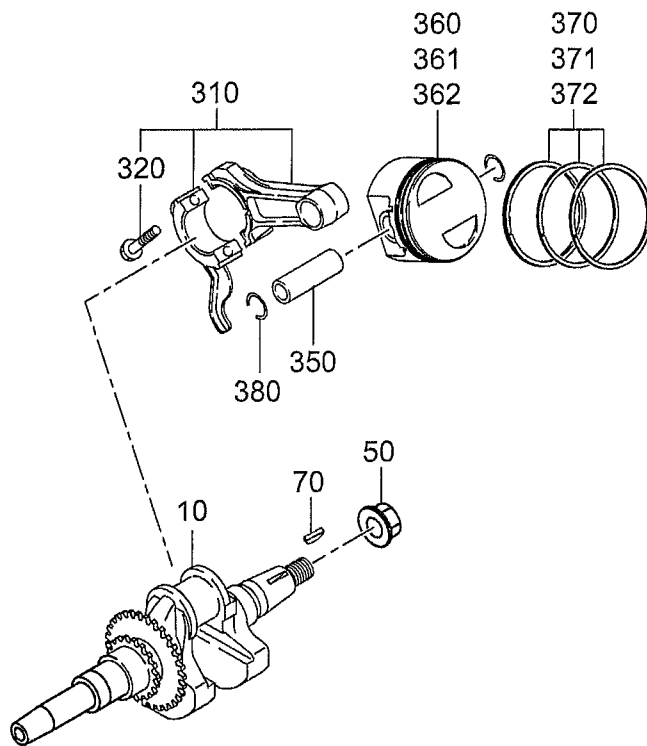
FIG. 100





SECTION 2 CRANKSHAFT, PISTON GROUP

FIG. 200

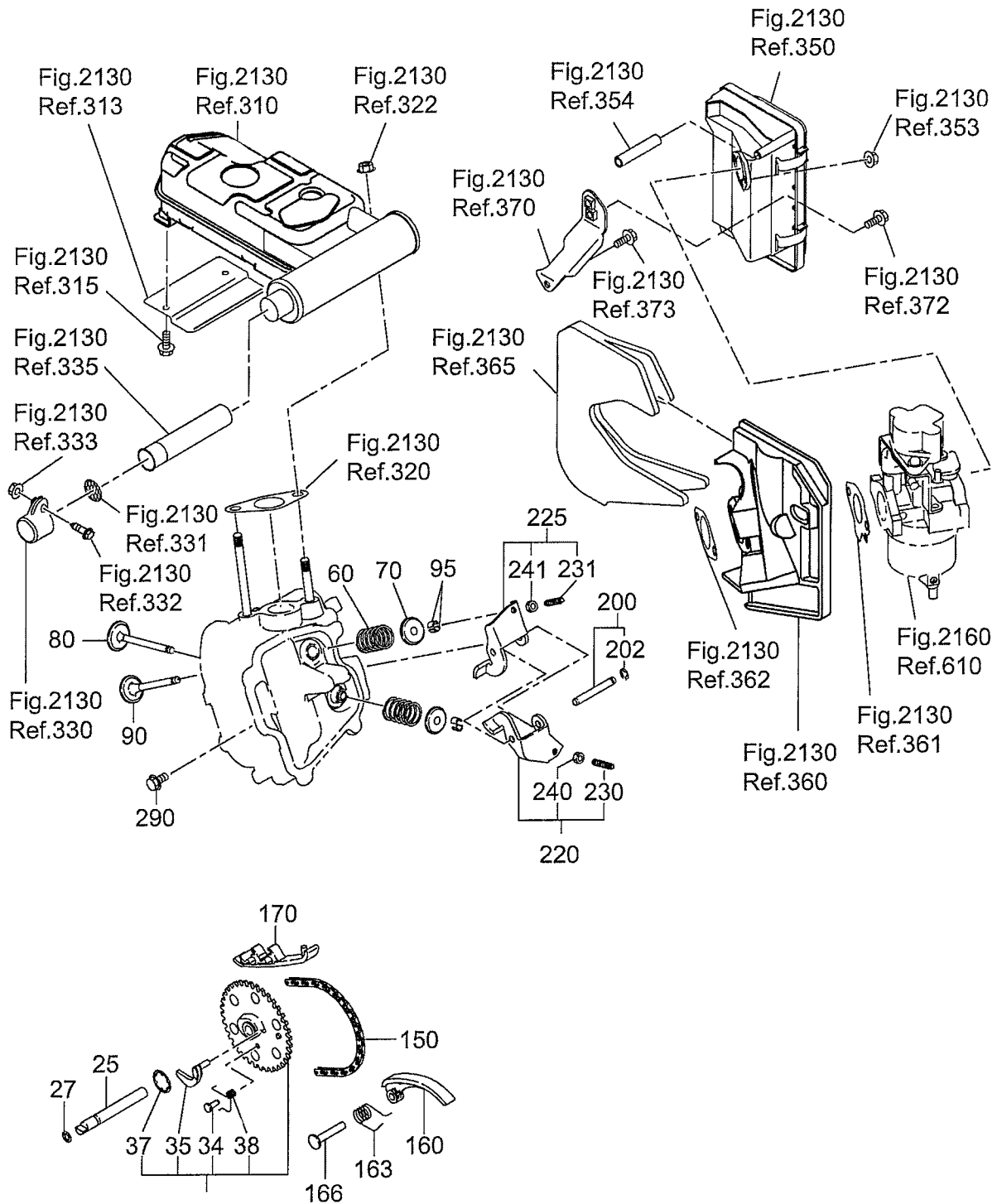






# SECTION 3 INTAKE, EXHAUST GROUP

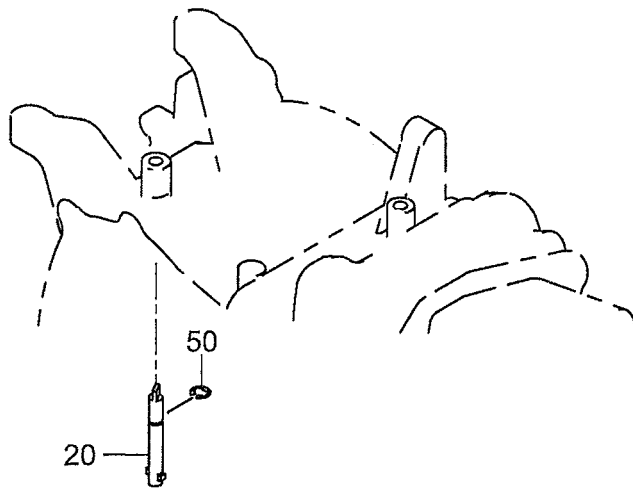
FIG. 300





SECTION 4 GOVERNOR, OPERATION GROUP

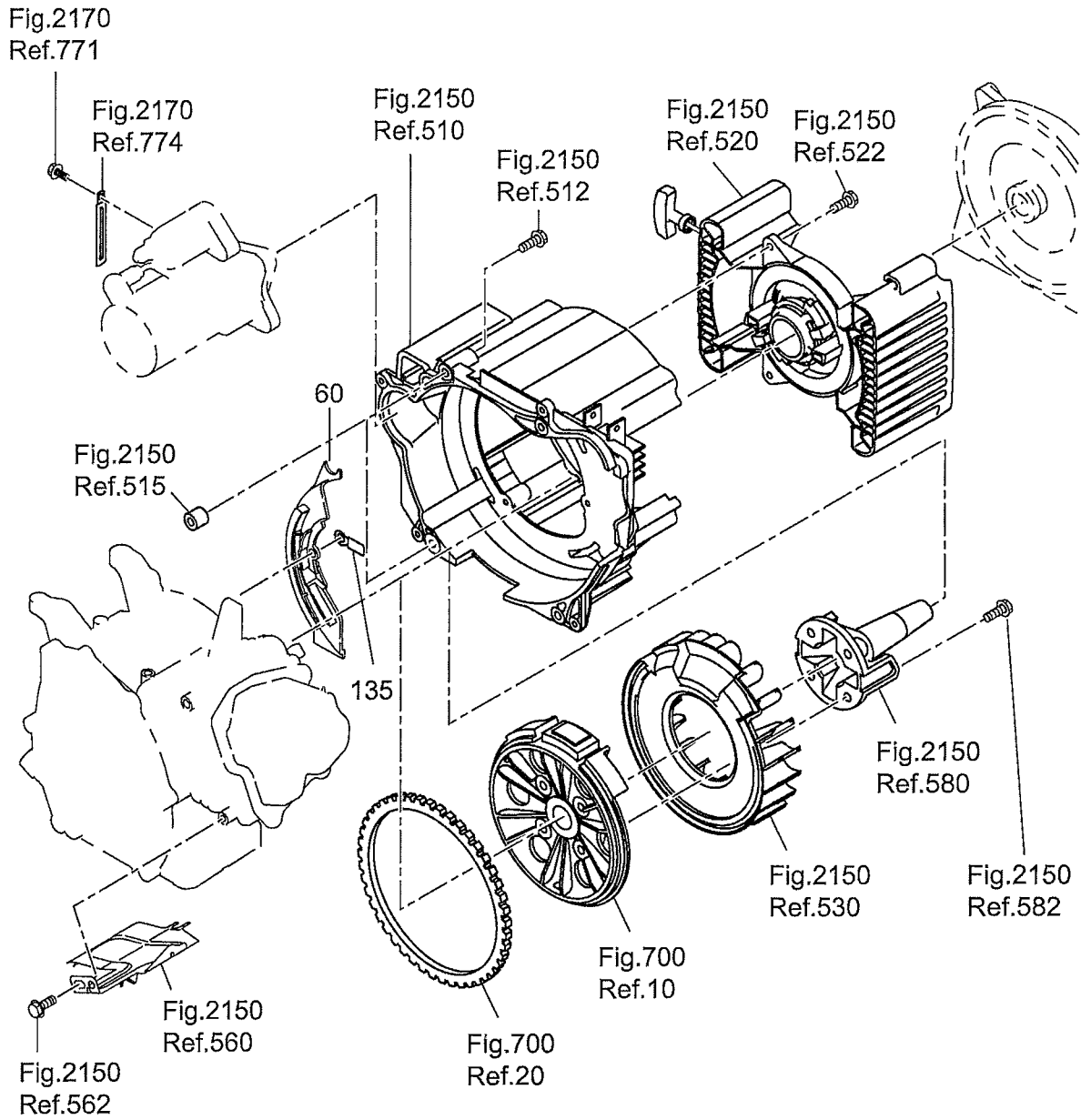
FIG. 400





SECTION 5 COOLING, STARTING GROUP

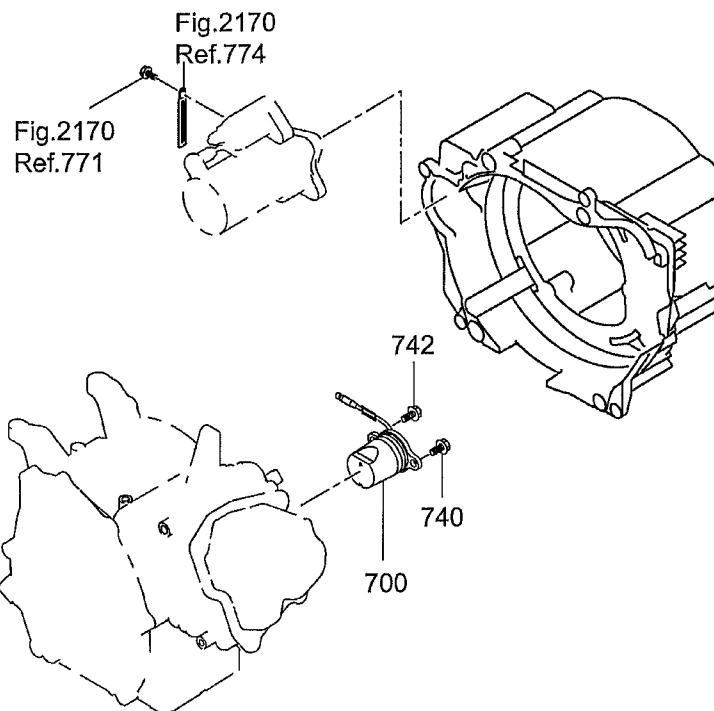
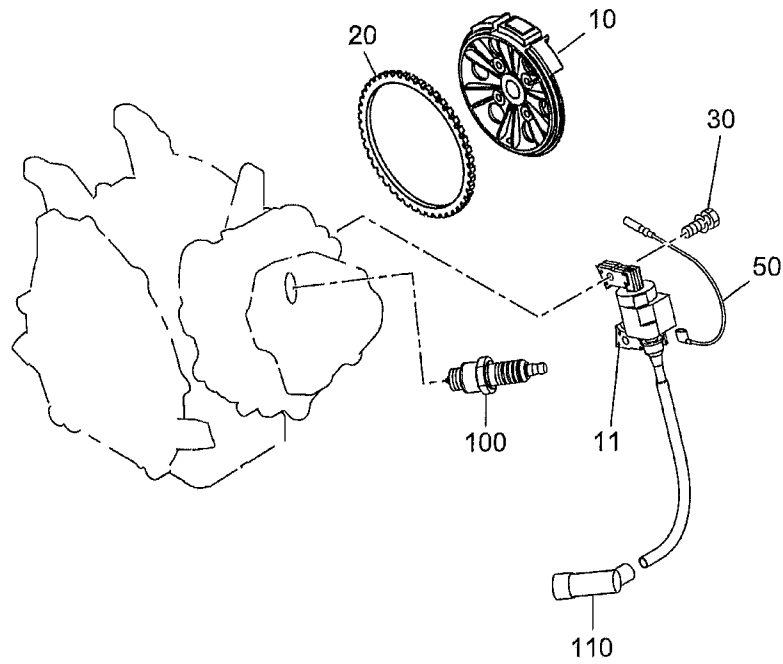
FIG. 500





SECTION 6 ELECTRIC DEVICE GROUP

FIG. 700

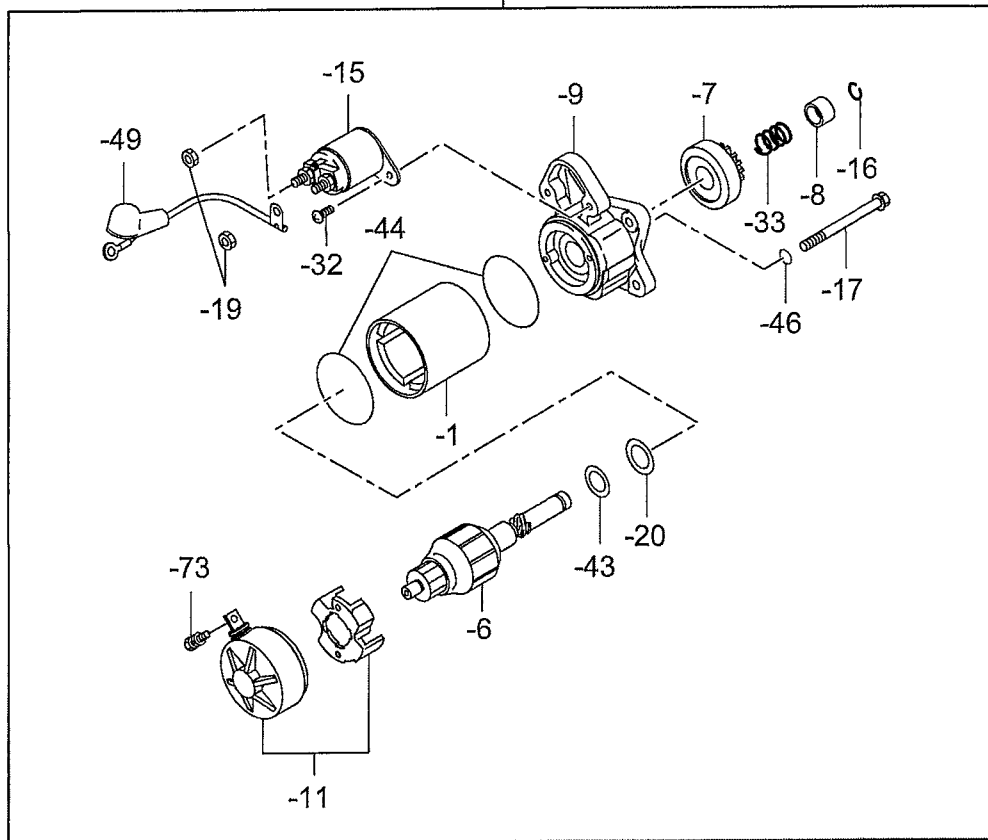
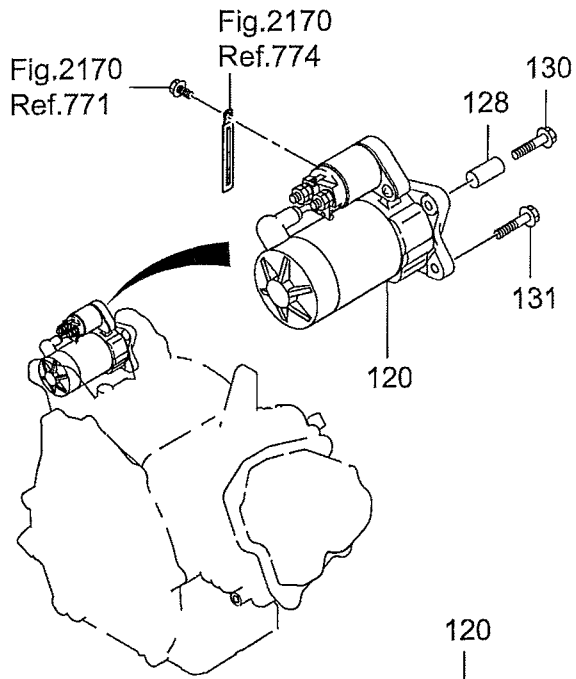






SECTION 6 ELECTRIC DEVICE GROUP

FIG. 720





SECTION 7 ENGINE GROUP

FIG. 2110

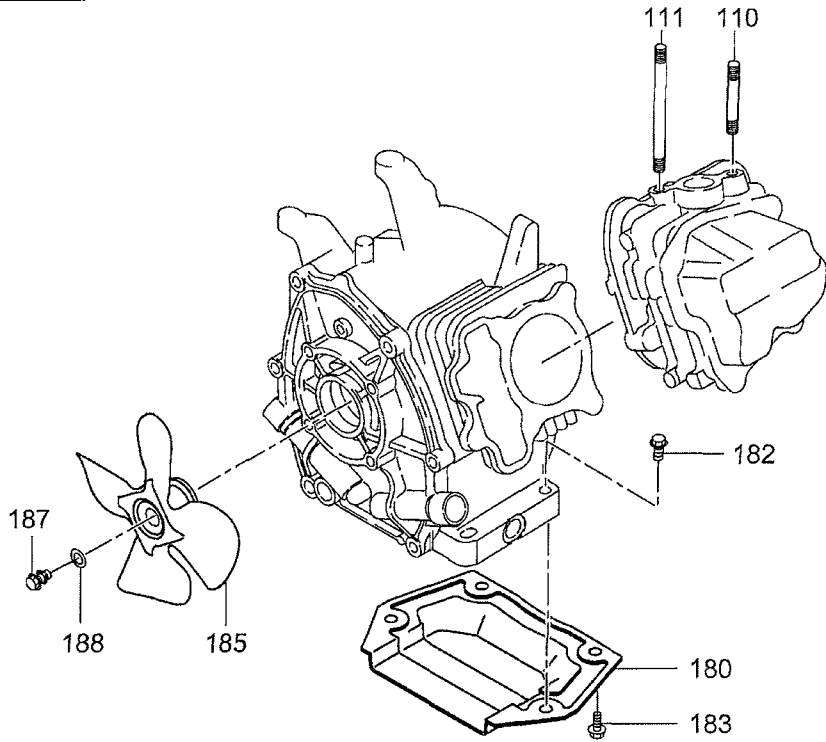
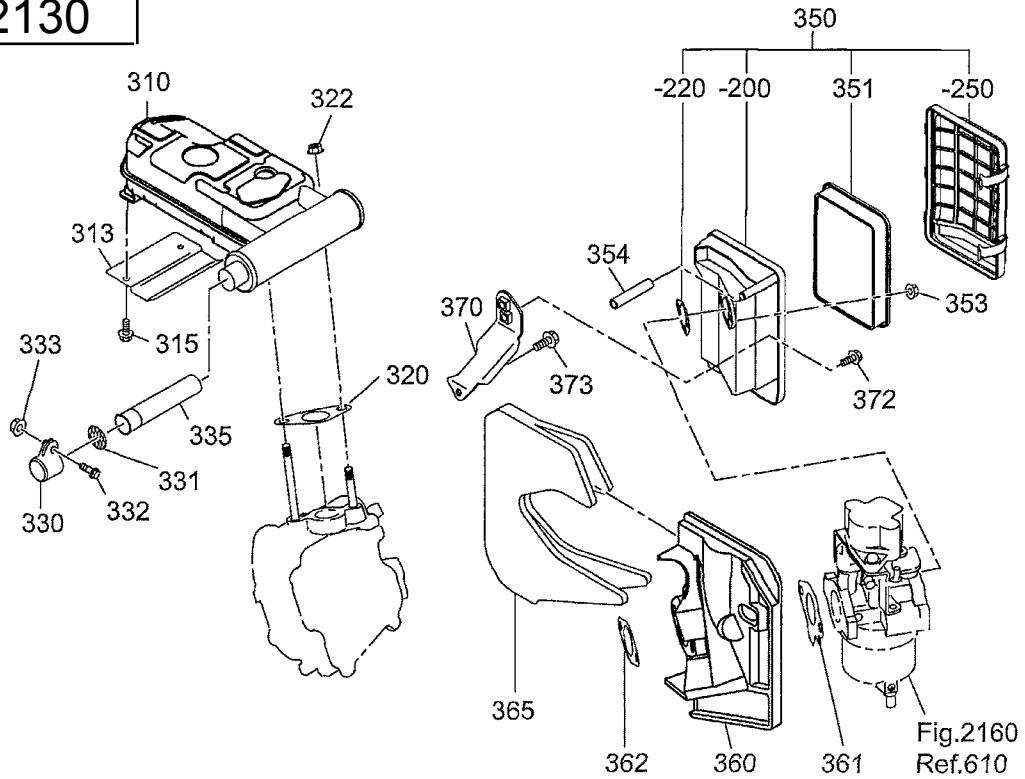


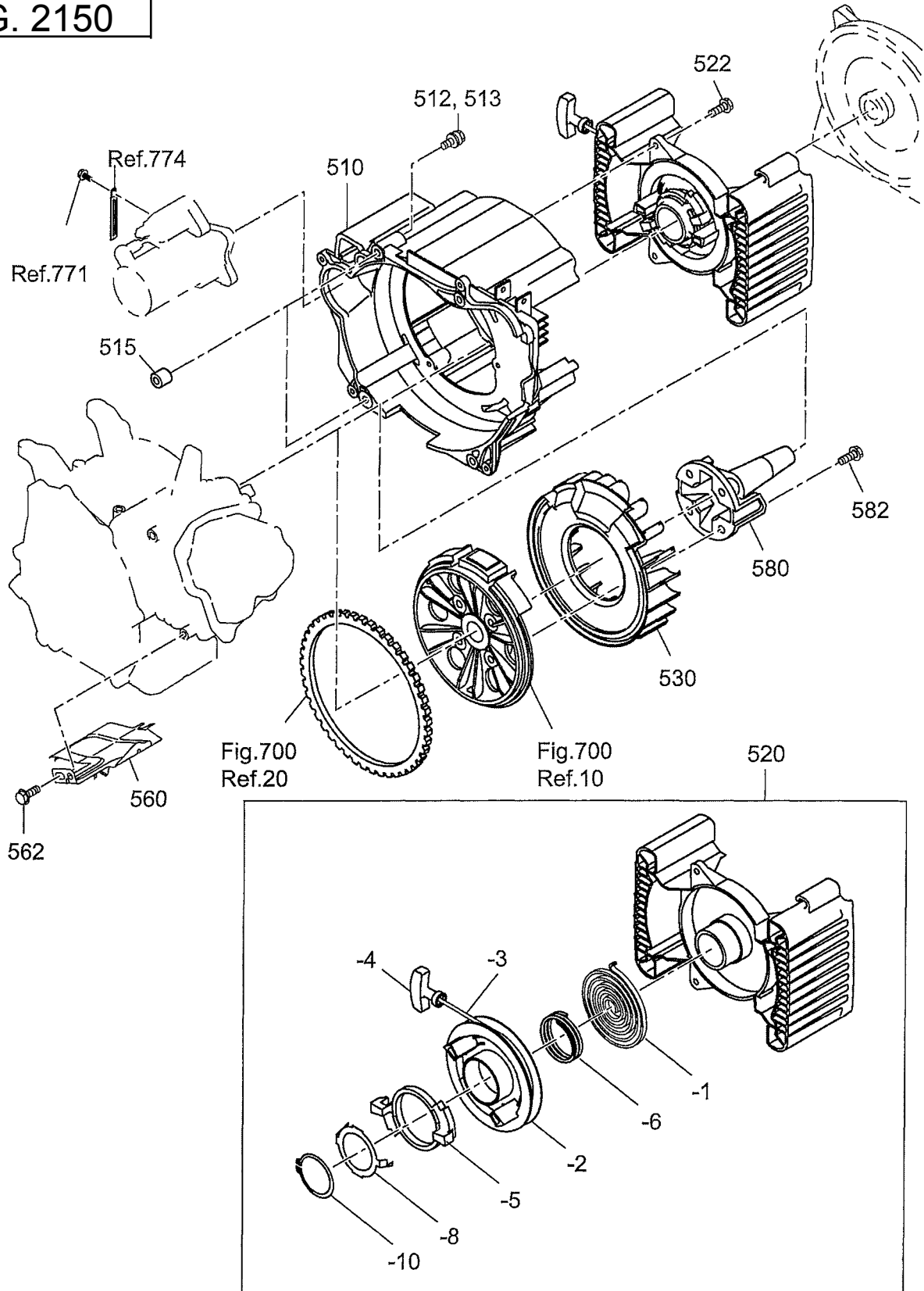
FIG. 2130





SECTION 7 ENGINE GROUP

FIG. 2150







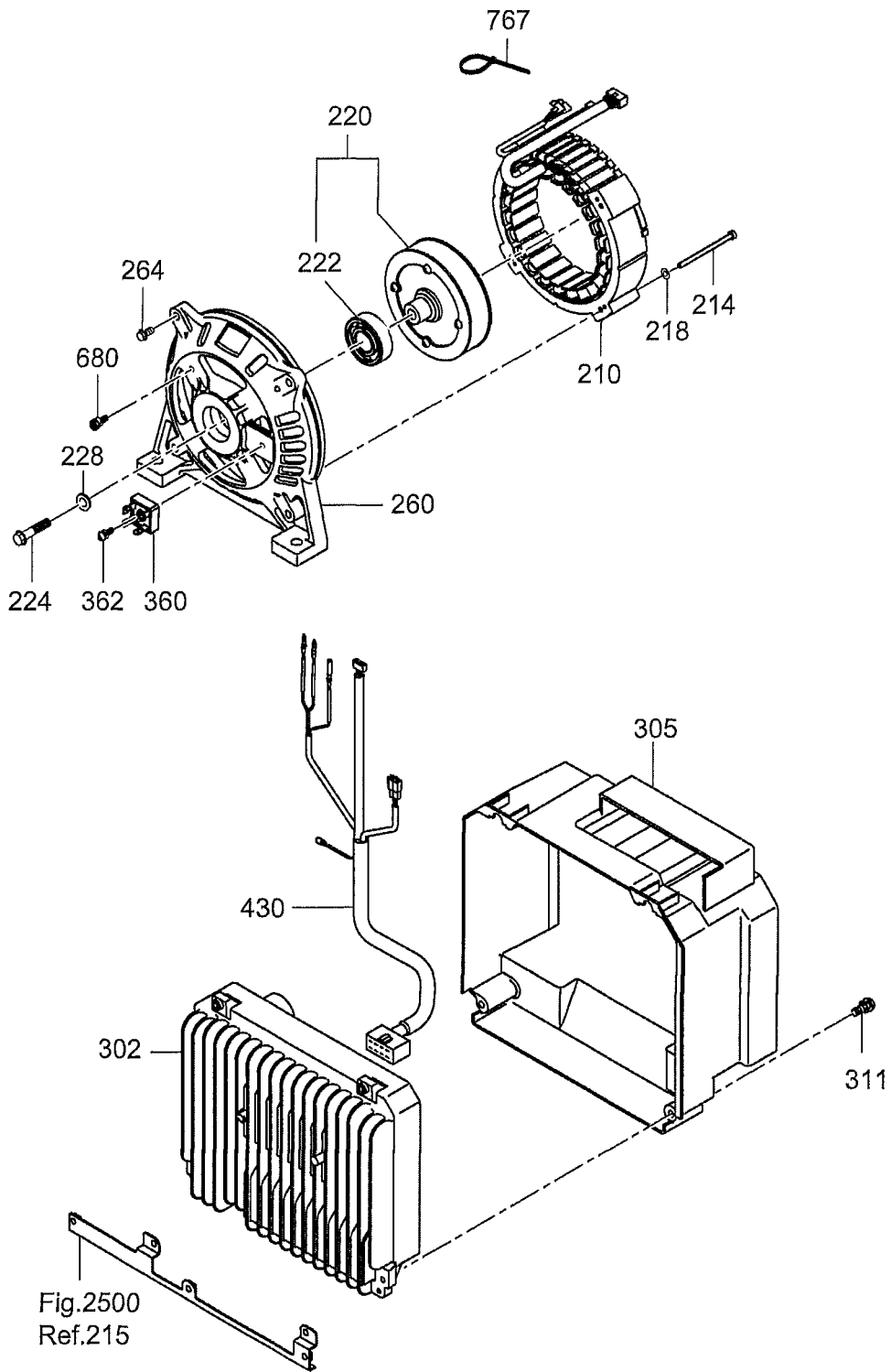


## SECTION 7 ENGINE GROUP

REF	PART NO	DESCRIPTION	QTY	REMARKS	FROM - TO	FIG
610	278-62330-00	CARBURETOR	1			2160
-1	277-62536-08	THROTTLE VALVE	1			2160
-2	284-62455-08	SCREW and WASHER	2			2160
-3	284-62525-08	CHOKE VALVE	1			2160
-4	284-62455-08	SCREW and WASHER	1			2160
-5	278-62421-08	SLOW JET	1			2160
-8	284-62520-08	CHOKE LEVER	1			2160
-11	277-62532-08	THROTTLE SHAFT	1			2160
-12	284-62355-08	BOLT and WASHER	1			2160
-14	279-62500-08	NEEDLE	1			2160
-15	284-62515-08	PIN	1			2160
-16	284-62550-08	FLOAT BODY	1			2160
-17	251-62350-08	PACKING	1			2160
-18	284-62540-08	CHAMBER PACKING	1			2160
-19	284-62505-08	FLOAT AY	1			2160
-22	278-62402-08	MAIN JET	1			2160
-23	284-62456-08	SCREW	1			2160
-25	284-62445-08	SPRING, choke	1			2160
-28	251-62466-08	BOLT	1			2160
-32	251-62559-08	SEAL	1			2160
-40	277-62581-08	ADJUST SCREW	1			2160
-41	251-62449-08	SPRING, choke	1			2160
-107	284-62561-08	COLLAR	2			2160
-109	284-62315-08	THROTTLE SPRING	1			2160
-151	284-62451-08	O RING	1			2160
-152	284-62450-08	O RING	1			2160
-155	277-62451-08	BRACKET, wire	1			2160
-191	277-62590-08	VINYL PIPE	1			2160
-400	284-62580-08	MOTOR	1			2160
-402	284-62576-08	BRACKET, motor	1			2160
-404	277-62595-08	COVER, motor	1			2160
-406	284-62458-08	SCREW	2			2160
-408	284-62457-08	SCREW	2			2160
-410	284-62555-08	JOINT LEVER	1			2160
-412	284-62446-08	SPRING, choke	1			2160
-420	284-62575-08	BRACKET	1			2160
-428	284-62457-08	SCREW	3			2160
771	011-00600-10	FLANGE BOLT	1			2170
774	056-60002-50	CLAMP	1			2170

SECTION 8 GENERATOR GROUP

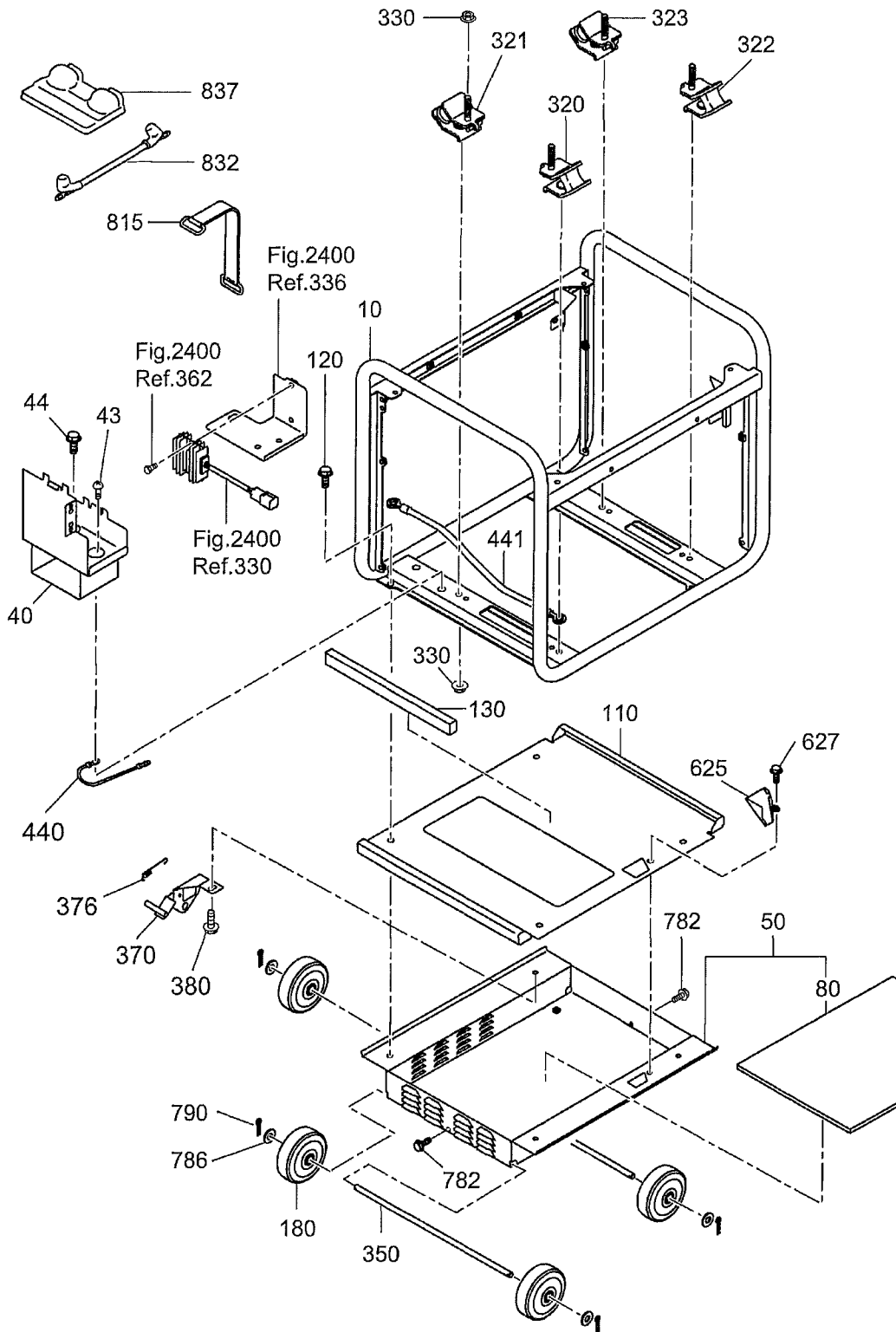
FIG. 2200





# SECTION 9 BASE, FRAME GROUP

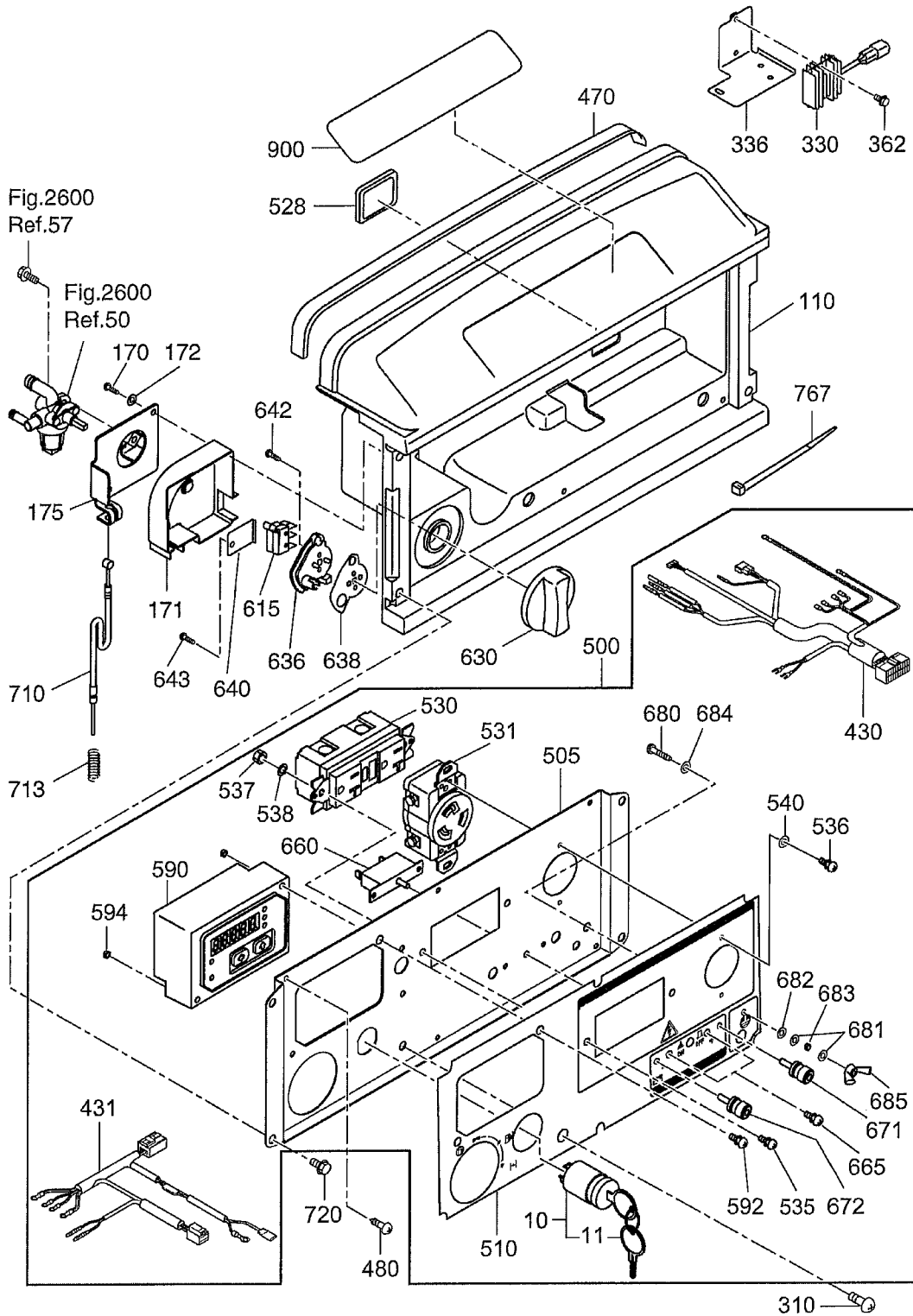
## FIG. 2300





# SECTION 9 CONTROL GROUP

## FIG. 2400

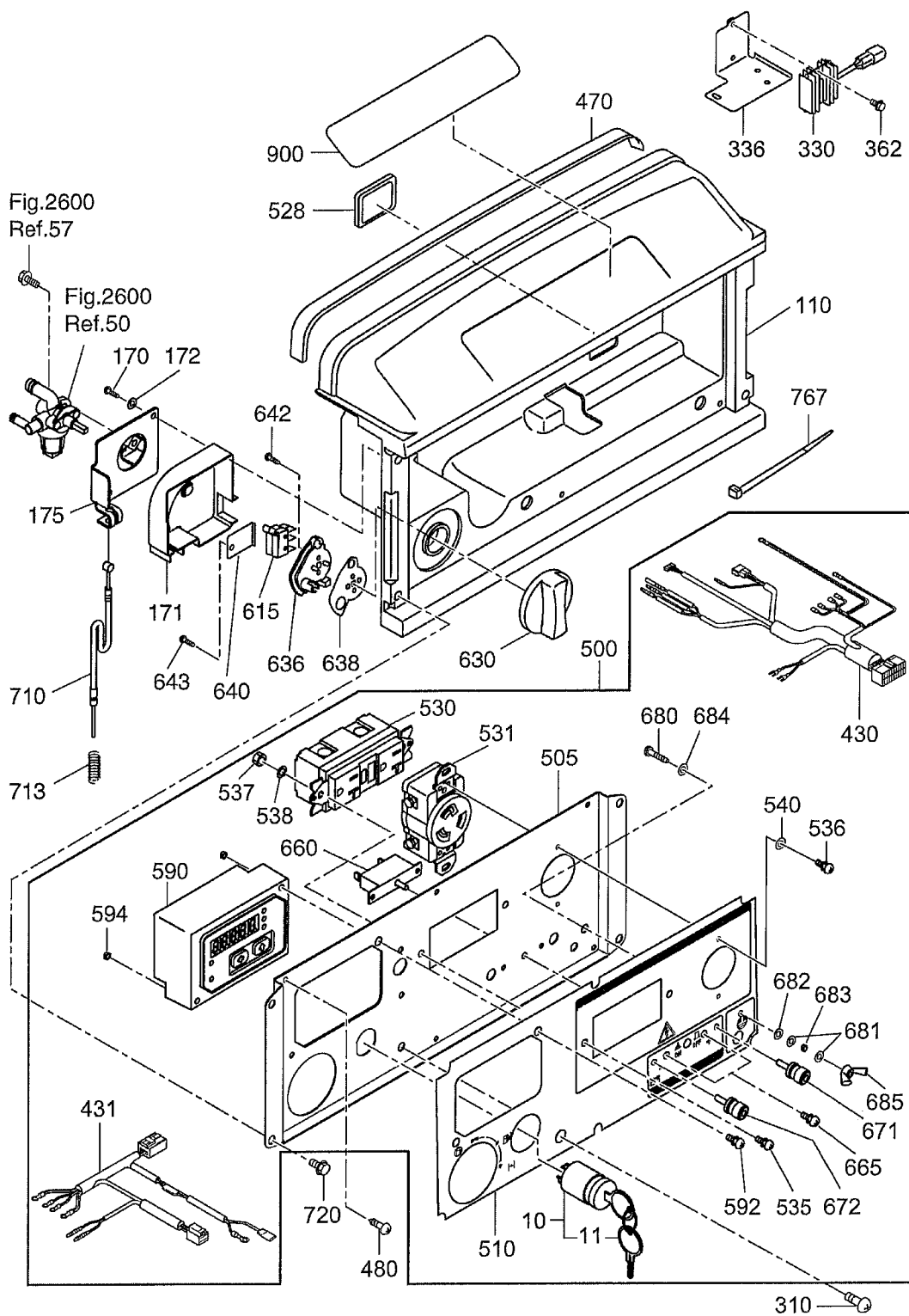


## SECTION 9 CONTROL GROUP

REF	PART NO	DESCRIPTION	QTY	REMARKS	FROM - TO	FIG
10	066-00003-30	KEY SWITCH	1			2400
11	066-00099-80	KEY	2			2400
110	33B-50001-01	FRONT COVER, upper	1			2400
170	015-00400-70	TAPPING SCREW	2			2400
171	33B-46001-03	COVER, cock	1			2400
172	003-10040-00	WASHER	2			2400
175	33B-46012-01	BRACKET, cock	1			2400
310	004-36061-60	SCREW and WASHER	2			2400
330	33B-47202-01	REGULATOR	1			2400
336	33B-35801-02	BRACKET, regulator	1			2400
362	011-00600-50	FLANGE BOLT	2			2400
430	34B-48001-01	WIRE HARNESS	1			2400
431	33B-48051-01	WIRE HARNESS	1			2400
470	34B-57311-03	SEAL SPONGE	1			2400
480	353-49904-08	TAPPING SCREW	6			2400
500	34C-45921-00	CONTROL PANEL	1			2400
505	33B-45013-01	PANEL PLATE	1			2400
510	34B-49119-03	SHEET	1			2400
528	227-75001-03	GROMMET	1			2400
530	388-85003-01	AC CONNECT, GFCI	1			2400
531	33C-49901-01	AC CONNECT, NEMA	1			2400
535	004-35041-00	SCREW and WASHER	2			2400
536	356-59937-08	SCREW	2			2400
537	002-27040-00	NUT	2			2400
538	003-10040-00	WASHER	2			2400
540	326-00335-08	SPRING WASHER	2			2400
590	KU3-11760-11	MONITOR C/U	1			2400
592	013-10400-80	SCREW and WASHER	2			2400
594	002-17040-00	NUT	2			2400
615	33K-41811-03	MICRO SWITCH	2			2400
630	33K-42010-03	CONTROL DIAL	1			2400
636	33K-42020-03	CHOKE REEL	1			2400
638	33K-42030-13	PLATE	1			2400
640	33B-46015-01	BRACKET, micro	1			2400
642	33K-41814-08	TAPPING SCREW	2			2400
643	015-00400-70	TAPPING SCREW	1			2400
660	352-45620-08	CIRCUIT BREAKER	1			2400
665	31B-79011-03	SCREW	2			2400
671	363-45701-08	TERMINAL BOLT	1	Red		2400
672	363-45700-08	TERMINAL BOLT	1	Black		2400
680	388-88001-03	SCREW and WASHER	1			2400
681	332-00050-08	SPRING WASHER	2			2400
682	353-49903-08	WASHER	1			2400
683	353-49902-08	NUT	1			2400
684	003-30050-00	LOCK WASHER	1			2400
685	353-49901-03	WING NUT	1			2400

# SECTION 9 CONTROL GROUP

## FIG. 2400

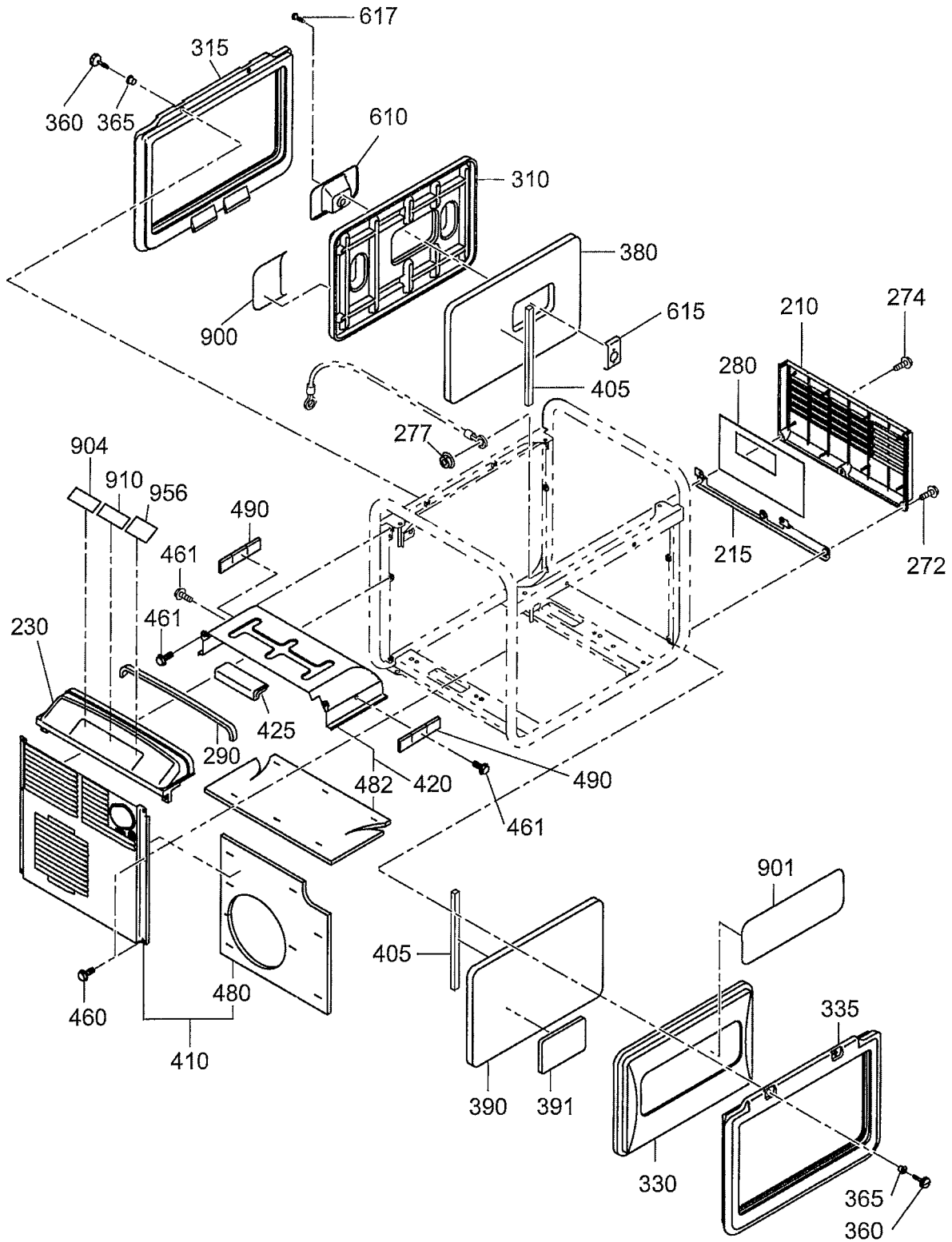






SECTION 10 COVER GROUP

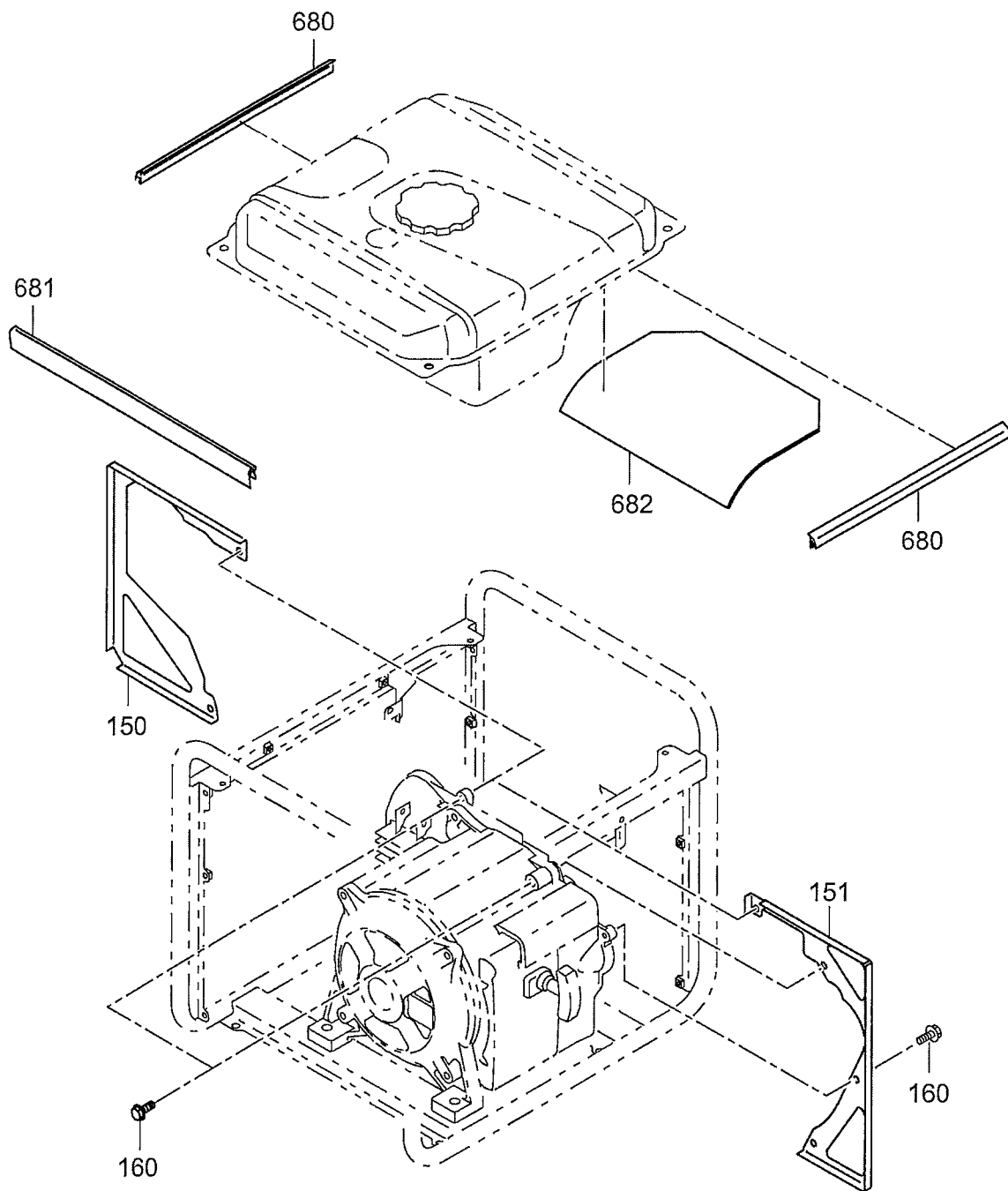
FIG. 2500





SECTION 10 COVER GROUP

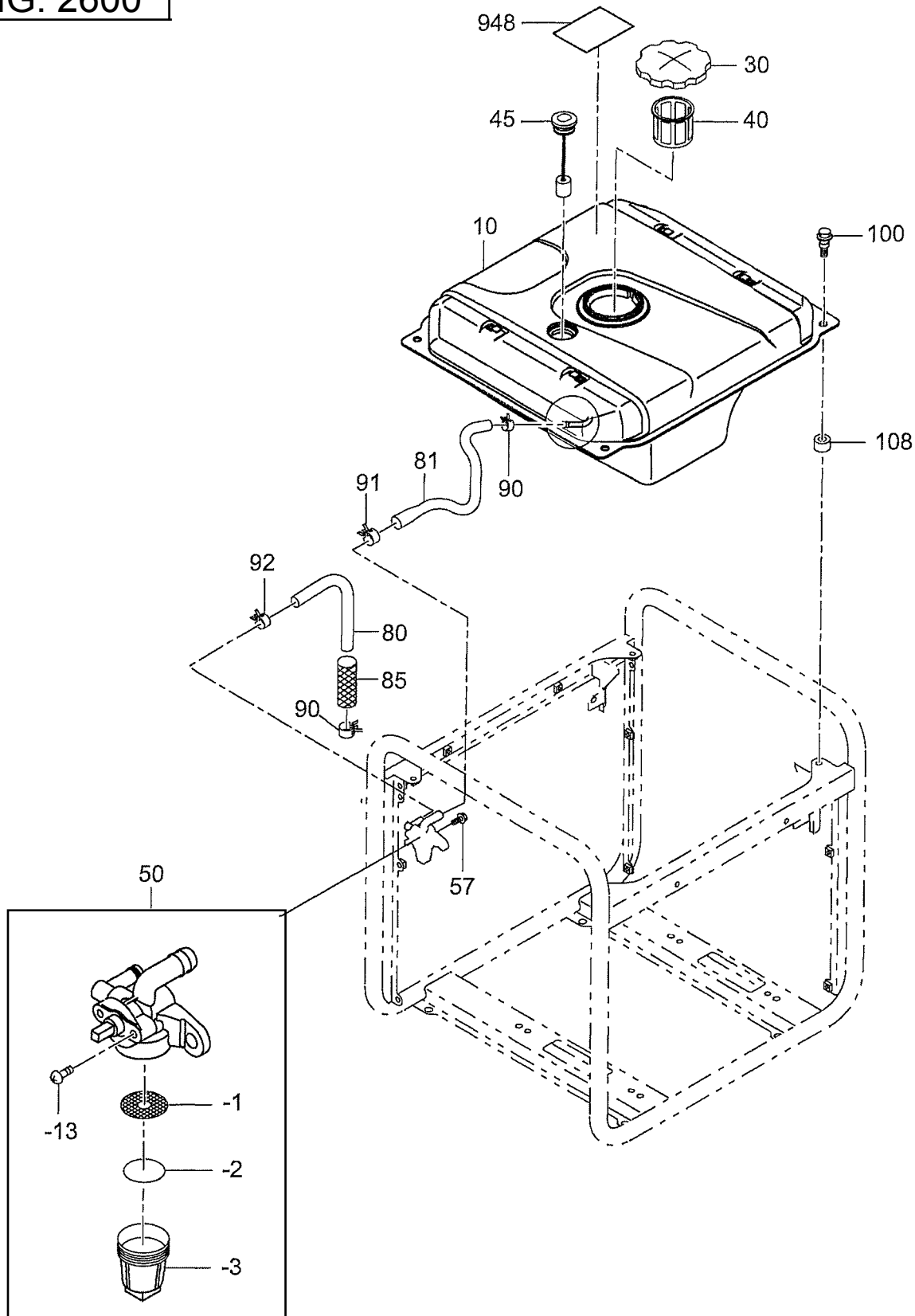
FIG. 2510





SECTION 11 FUEL TANK GROUP

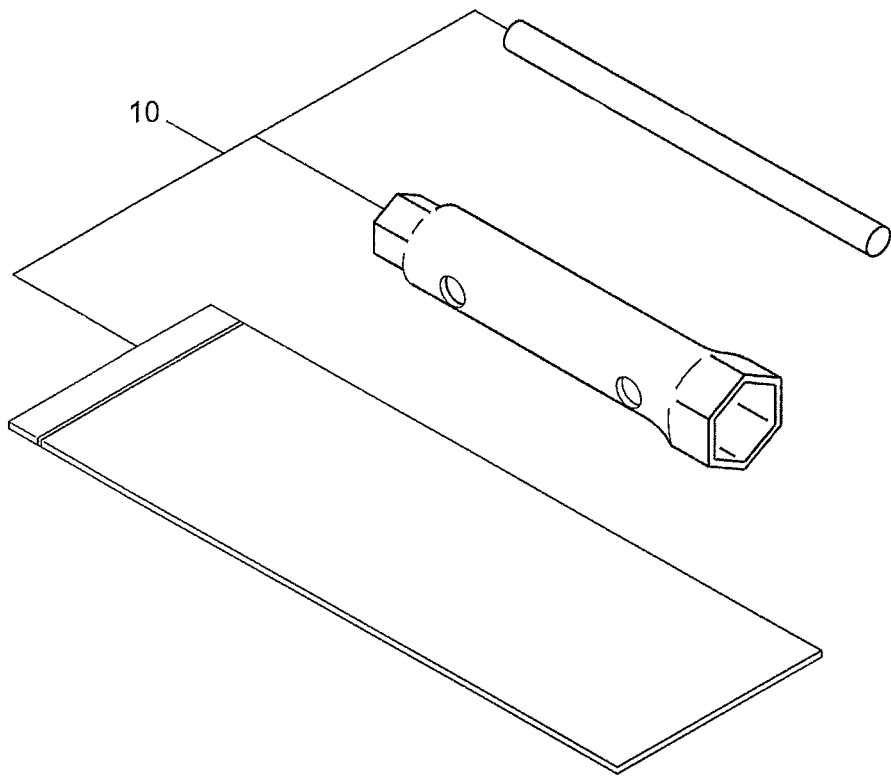
FIG. 2600





SECTION 12 ACCESSORIES GROUP

FIG. 2900







PRINTED IN THE USA

## Free Manuals Download Website

<http://myh66.com>

<http://usermanuals.us>

<http://www.somanuals.com>

<http://www.4manuals.cc>

<http://www.manual-lib.com>

<http://www.404manual.com>

<http://www.luxmanual.com>

<http://aubethermostatmanual.com>

Golf course search by state

<http://golfingnear.com>

Email search by domain

<http://emailbydomain.com>

Auto manuals search

<http://auto.somanuals.com>

TV manuals search

<http://tv.somanuals.com>