



PARTS CATALOG

Robin

Generator

Model

RGX1810

RGX2410

 **FUJI HEAVY INDUSTRIES LTD.**

ISSUE EMD-GP0994

HOW TO USE THIS PARTS CATALOG

1. Reference numbers with an asterisk




Reference numbers marked with an asterisk indicate that the particular part is available only as a complete set or assembly.

Example :

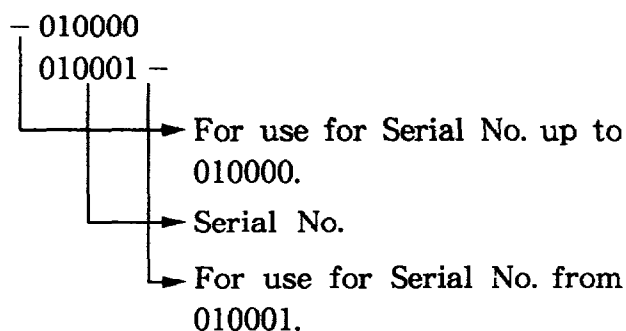
If the reference number is marked with an asterisk and the description of the part states that certain items are included, this means that those included items cannot be ordered separately and must be purchased as a complete assembly.

2. Description of interchangeability and execution columns

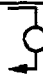


Example : Interchangeability column

-  Items interchangeable between the new and old parts.
-  Items not interchangeable between the new and old parts.
-  Items conditionally interchangeable between the new and old parts which are subject to the description in the execution column.

Example : Execution column



Example : Interchangeable

Part Number	Interchangeability Symbol	Execution	Explanation
Part B		020000 -	This indicates that Part A changed to Part B for generators with serial numbers from 20000, and that they are interchangeable.
Part C Part B Part A		020000 - 015000 -	This indicates that Part A changed to Part B for generators with serial numbers from 15000, and that they are not interchangeable. Also, Part B changed to Part C for generators with serial numbers from 20000 and that they are interchangeable.
Part A		020000 -	This indicates that Part A is a new part for generators with serial numbers with from 20000.
Part B		- 030000	This indicates that Part B is no longer used for generator with serial numbers from 30001.
Part B Part A		020000 -	This indicates that Part A changed to Part B for generators with serial numbers from 20000, and that they are conditionally interchangeable. (See NOTE described at the end of the section.)

3. The contents of this parts catalog are subject to revision without notice.

To INSURE PROMPT AND ACCURATE SERVICE, ALSO THE FOLLOWING INFORMATION MUST BE GIVEN.

1. State exactly the quantity of each part and its part numbers.
2. Clearly state whether parts are to be shipped by express, freight or parcel post.
3. State the exact mailing address.

CONTENTS

GENERATOR PARTS

	Page
FIG. 1 GENERATOR.....	1
FIG. 2 PIPE FRAME and FUEL TANK	3
FIG. 3-1 CONTROL BOX (220V, 240V) (FOR RGX1810).....	5
FIG. 3-2 CONTROL BOX (220V, 240V) (FOR RGX2410).....	9
FIG. 3-3 CONTROL BOX (60Hz-110V)	13
FIG. 3-4 CONTROL BOX (60Hz-110V/220V)	15

ENGINE PARTS

FIG. 4 CRANKCASE GROUP.....	17
FIG. 5 CRANKSHAFT and PISTON GROUP.....	19
FIG. 6 INTAKE and EXHAUST GROUP	21
FIG. 7 GOVERNOR, OPERATE GROUP	23
FIG. 8 COOLING and STARTING GROUP	25
FIG. 9 FUEL, LUBRICANT GROUP.....	27
FIG. 10 ELECTRIC DEVICE GROUP.....	29
FIG. 11 ACCESSORIES GROUP	33
FIG. 12 WHEEL, HANDLE and HANGER.....	35

FIG. 1 GENERATOR

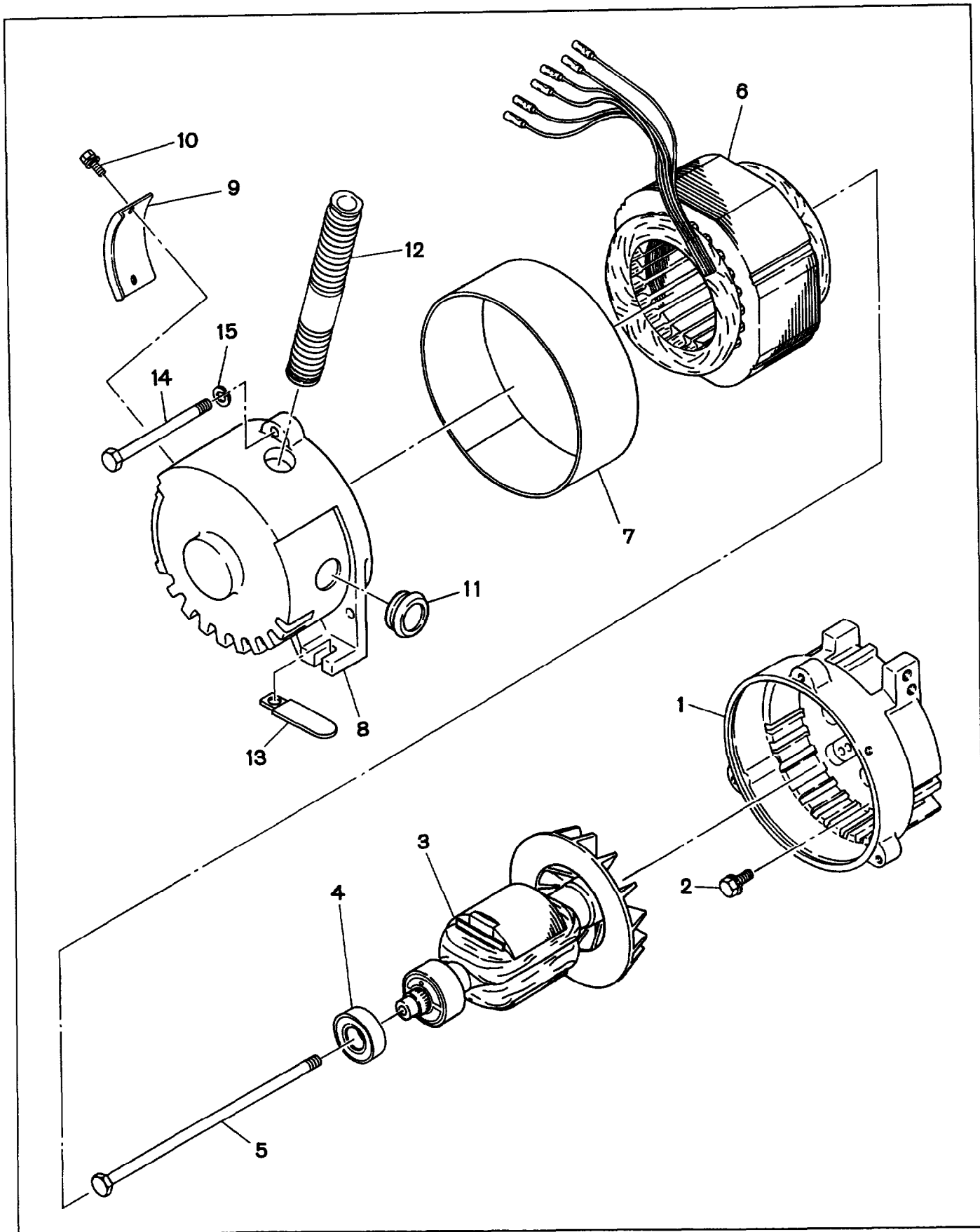


FIG. 1 GENERATOR

└ Interchangeability

Ref. No.	Parts Number	Description	Q'ty	Execution
1	365 - 54112 - 08	FRONT COVER	1	
2	359 - 59935 - 08	BOLT and WASHER ASS'Y (M8 × 20mm)	4	
* 3	378 - 50525 - 08	ROTOR, compl. Includes item 4 For RGX1810	1	
* 3	379 - 50526 - 08	ROTOR, compl. Includes item 4 For RGX2410	1	
4	353 - 58208 - 08	BALL BEARING	1	
5	387 - 55801 - 03	THROUGH BOLT (M8 × 230mm) For RGX1810	1	
5	388 - 55801 - 03	THROUGH BOLT (M8 × 235mm) For RGX2410	1	
6	387 - 55501 - 01	STATOR, compl. For 50Hz - 220V For RGX1810	1	
6	387 - 55502 - 01	STATOR, compl. For 60Hz - 110V, 110/220V, 220V For RGX1810	1	
6	387 - 55503 - 01	STATOR, compl. For 50Hz - 240V For RGX1810	1	
6	388 - 55501 - 01	STATOR, compl. For 50Hz - 220V For RGX2410	1	
6	388 - 55502 - 01	STATOR, compl. For 60Hz - 110V, 110/220V, 220V For RGX2410	1	
6	388 - 55503 - 01	STATOR, compl. For 50Hz - 240V For RGX2410	1	
7	365 - 54505 - 08	STATOR COVER For RGX1810	1	
7	366 - 54009 - 08	STATOR COVER For RGX2410	1	
8	388 - 55601 - 01	REAR COVER	1	
9	365 - 54506 - 08	BRUSH COVER	1	
10	004 - 35041 - 00	BOLT and WASHER ASS'Y (M4 × 10mm)	2	
11	388 - 76601 - 03	GROMMET	1	
12	391 - 29000 - 13	BUSHING	1	
13	056 - 60001 - 70	CLAMP	1	
14	365 - 59907 - 08	COVER BOLT (M6 × 90mm) For RGX1810	3	
14	366 - 59910 - 08	COVER BOLT (M6 × 100mm) For RGX2410	3	
15	003 - 20060 - 00	SPRING WASHER	3	

FIG. 2 PIPE FRAME and FUEL TANK

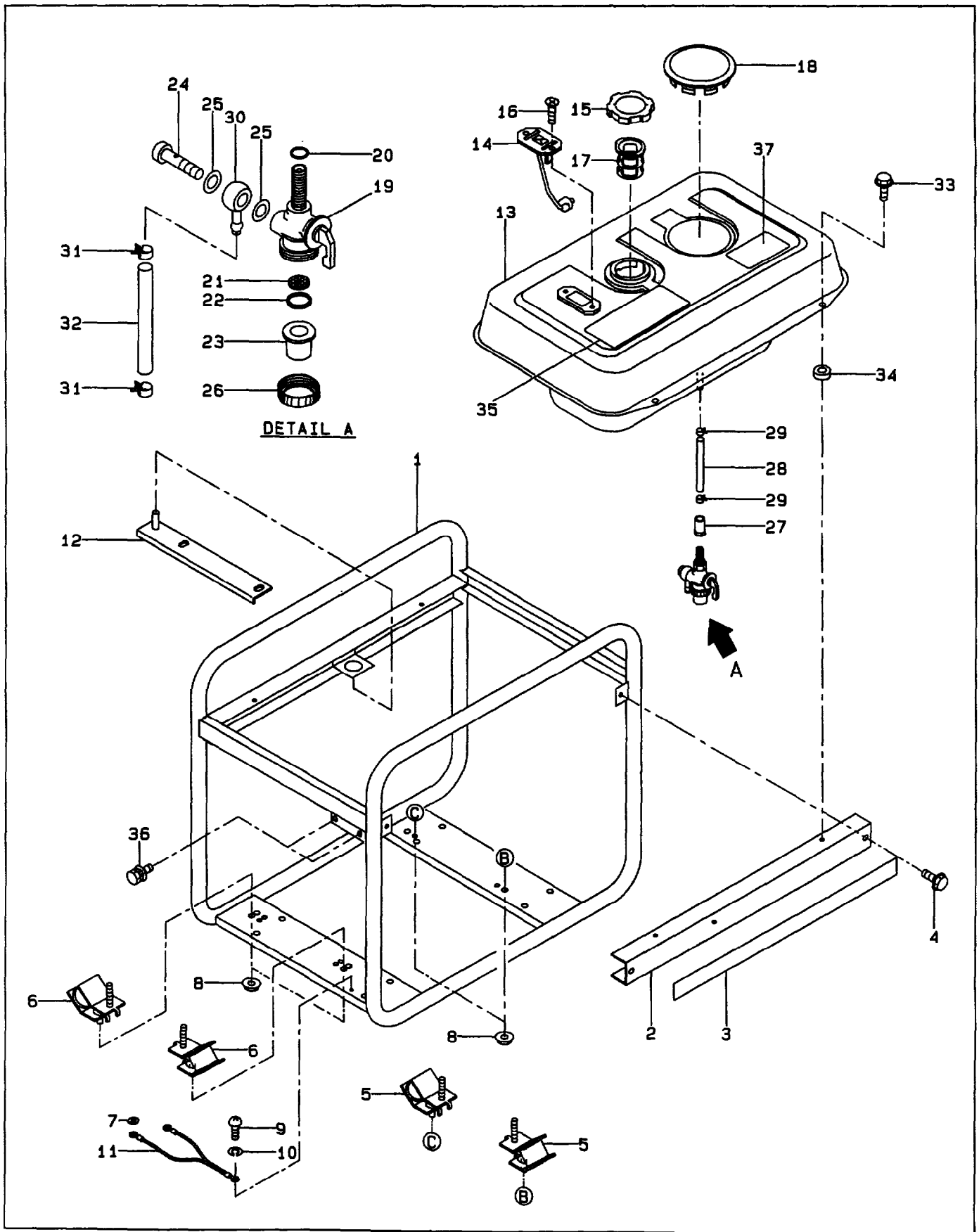


FIG. 2 PIPE FRAME and FUEL TANK

				↙ Interchangeability
Ref. No.	Parts Number	Description	Q'ty	Execution
1	388 - 65501 - 01	PIPE FRAME, compl.	1	
2	388 - 58585 - 08	SIDE PLATE A, compl.	1	
3	387 - 87101 - 03	LABEL (RGX1810)	1	
3	388 - 87101 - 03	LABEL (RGX2410)	1	
4	011 - 00600 - 80	FLANGE BOLT (M6 × 12mm)	2	
5	377 - 37001 - 11	RUBBER MOUNT UNIT, engine side	2	
6	377 - 37000 - 11	RUBBER MOUNT UNIT, generator side	2	
7	003 - 10080 - 00	WASHER	1	
8	002 - 38080 - 00	FLANGE NUT (M8)	8	
9	341 - 00508 - 00	SCREW (M5 × 10mm)	1	
10	332 - 00050 - 08	SPRING WASHER	1	
11	388 - 54413 - 08	EARTH CORD	1	
12	388 - 54410 - 18	STOPPER PLATE	1	
13	227 - 60725 - 01	FUEL TANK, compl. (Color : CANARY YELLOW)	1	
14	064 - 80002 - 00	FUEL GAUGE, compl.	1	
15	043 - 04300 - 15	FUEL TANK CAP, compl.	1	
16	014 - 50500 - 40	SCREW, counter head	2	
17	064 - 13600 - 10	FUEL FILTER	1	
18	227 - 66001 - 03	PLUG COVER	1	
*19	064 - 20023 - 11	FUEL STRAINER ASS'Y Includes items 20 thru 26	1	
20	064 - 20003 - 30	O-RING	1	
21	064 - 20002 - 20	FILTER	1	
22	064 - 20002 - 30	PACKING	1	
23	064 - 20019 - 10	CUP	1	
24	064 - 20002 - 40	BANJO BOLT	1	
25	064 - 20002 - 50	FIBER PACKING	2	
26	064 - 20024 - 10	LOCK NUT	1	
27	053 - 30900 - 20	NUT, joint	1	
28	085 - 11100 - 50	RUBBER PIPE (11.5 φ × 17.5 φ × 230mm)	1	
29	056 - 11700 - 10	HOSE CLAMP	2	
30	052 - 10601 - 10	BANJO	1	
31	056 - 11000 - 30	HOSE CLAMP	2	
32	085 - 10400 - 00	RUBBER PIPE (4.5 φ × 11 φ × 160mm)	1	
33	011 - 00602 - 20	FLANGE BOLT	4	
34	391 - 39000 - 13	RUBBER WASHER	4	
35	388 - 93003 - 03	CAUTION LABEL For English	1	
35	388 - 93004 - 03	CAUTION LABEL For Chinese	1	
36	001 - 10061 - 20	BOLT and WASHER ASS'Y (M6 × 15mm)	2	
37	383 - 97026 - 13	LABEL (BAHAMDINE)	1	

FIG. 3-1 CONTROL BOX (220V, 240V) (FOR RGX1810)

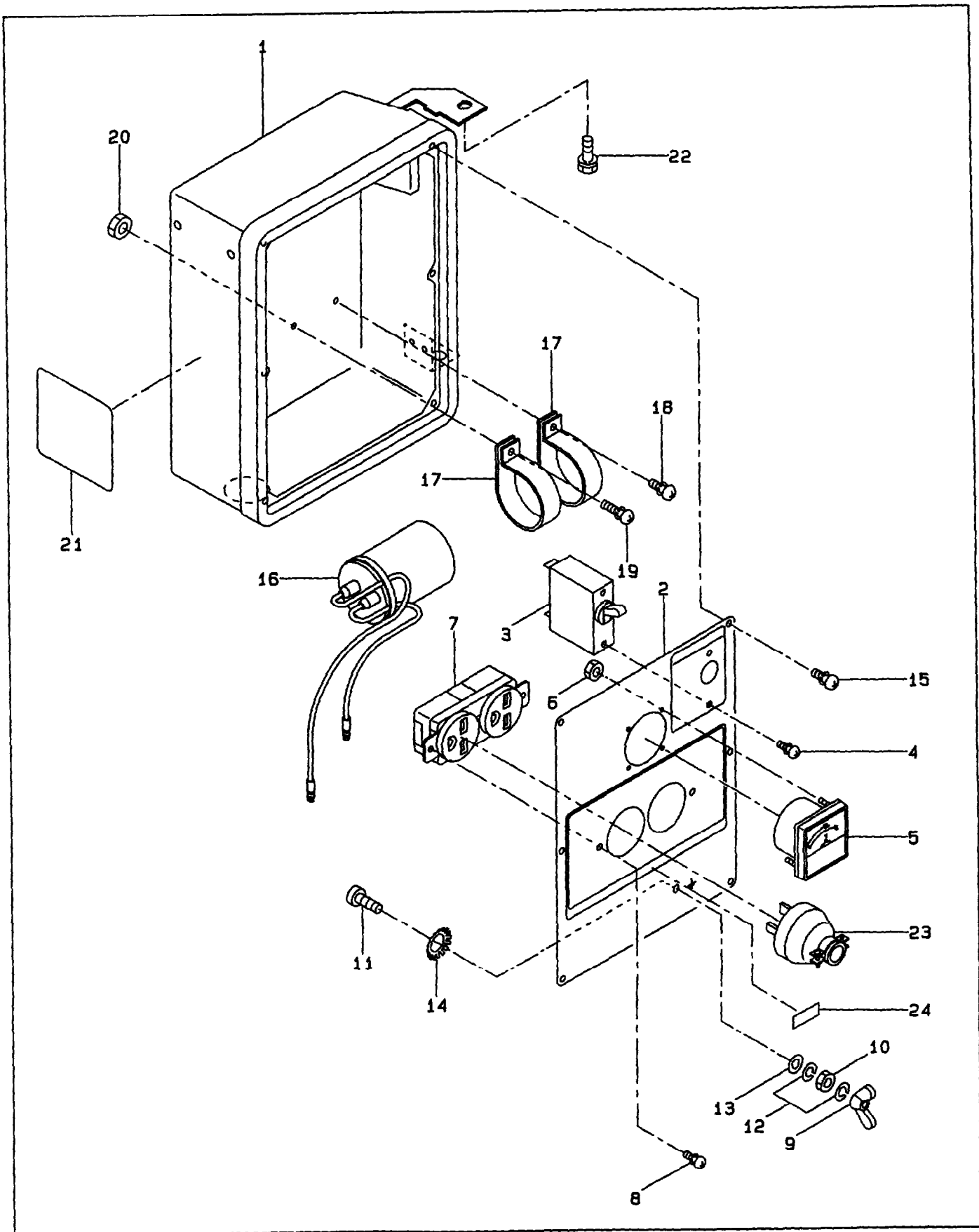


FIG. 3-1 CONTROL BOX (220V, 240V) (FOR RGX1810)

Interchangeability

Ref. No.	Parts Number	Description	Q'ty	Execution
* 1	387 - 76501 - 00	CONTROL BOX ASS'Y Includes items 1 thru 21 For 50Hz - 220V For English	1	
* 1	387 - 76503 - 00	CONTROL BOX ASS'Y Includes items 1 thru 21 For 50Hz - 220V For Chinese	1	
* 1	387 - 76504 - 00	CONTROL BOX ASS'Y Includes items 1 thru 21 and 24 For 50Hz - 240V For English	1	
* 1	387 - 76506 - 00	CONTROL BOX ASS'Y Includes items 1 thru 21 For 60Hz - 220V For English	1	
1	388 - 76401 - 02	CONTROL BOX, compl.	1	
* 2	387 - 76001 - 00	CONTROL PANEL A ASS'Y Includes items 2 thru 14 For 50Hz - 220V For English	1	
* 2	387 - 76002 - 00	CONTROL PANEL A ASS'Y Includes items 2 thru 14 For 50Hz - 220V For Chinese	1	
* 2	387 - 76004 - 00	CONTROL PANEL A ASS'Y Includes items 2 thru 14 For 50Hz - 240V For English and 24	1	
* 2	387 - 76006 - 00	CONTROL PANEL A ASS'Y Includes items 2 thru 14 For 60Hz - 220V For English	1	
2	388 - 76101 - 01	CONTROL PANEL A, compl. For English	1	
2	388 - 76104 - 01	CONTROL PANEL A, compl. For Chinese	1	
3	30E - 43000 - 03	NO FUSE BREAKER (6.5A) For 50Hz - 220V	1	
3	30A - 43000 - 03	NO FUSE BREAKER (5.5A) For 50Hz - 240V	1	
3	387 - 76701 - 03	NO FUSE BREAKER (7A) For 60Hz - 220V	1	
4	004 - 35030 - 60	SCREW and WASHER ASS'Y (M3 x 6mm)	2	
5	391 - 47902 - 01	VOLTMETER (AC200V)	1	
6	388 - 49801 - 08	NUT (M3)	2	
7	31C - 75101 - 03	RECEPTACLE (15A - 250V)	1	
8	004 - 35041 - 00	SCREW and WASHER ASS'Y (M4 x 10mm)	2	
9	353 - 49901 - 08	WING NUT (M5)	1	
10	353 - 49902 - 08	NUT (M5)	1	
11	356 - 49907 - 08	SCREW (M5 x 15mm)	1	
12	332 - 00050 - 08	SPRING WASHER	2	
13	353 - 49903 - 08	WASHER	1	
14	372 - 59950 - 08	LOCK WASHER	1	
15	353 - 49904 - 08	SCREW (M4 x 10mm)	6	
16	387 - 76301 - 01	CONDENSER, compl. (17 μ F)	1	
17	380 - 47531 - 08	CONDENSER HOLDER	2	
18	004 - 35041 - 00	SCREW and WASHER ASS'Y (M4 x 10mm)	1	
19	389 - 59989 - 08	SCREW and WASHER ASS'Y (M4 x 15mm)	1	
20	389 - 59990 - 08	NUT (M4)	2	
21	387 - 87001 - 03	LABEL (SPEC) For 50Hz - 220V For English	1	
21	387 - 87003 - 03	LABEL (SPEC) For 50Hz - 220V For Chinese	1	
21	387 - 87004 - 03	LABEL (SPEC) For 50Hz - 240V For English	1	
21	387 - 87005 - 03	LABEL (SPEC) For 60Hz - 220V For English	1	
22	001 - 10061 - 20	BOLT and WASHER ASS'Y (M6 x 15mm)	1	

FIG. 3-1 CONTROL BOX (220V, 240V) (FOR RGX1810)

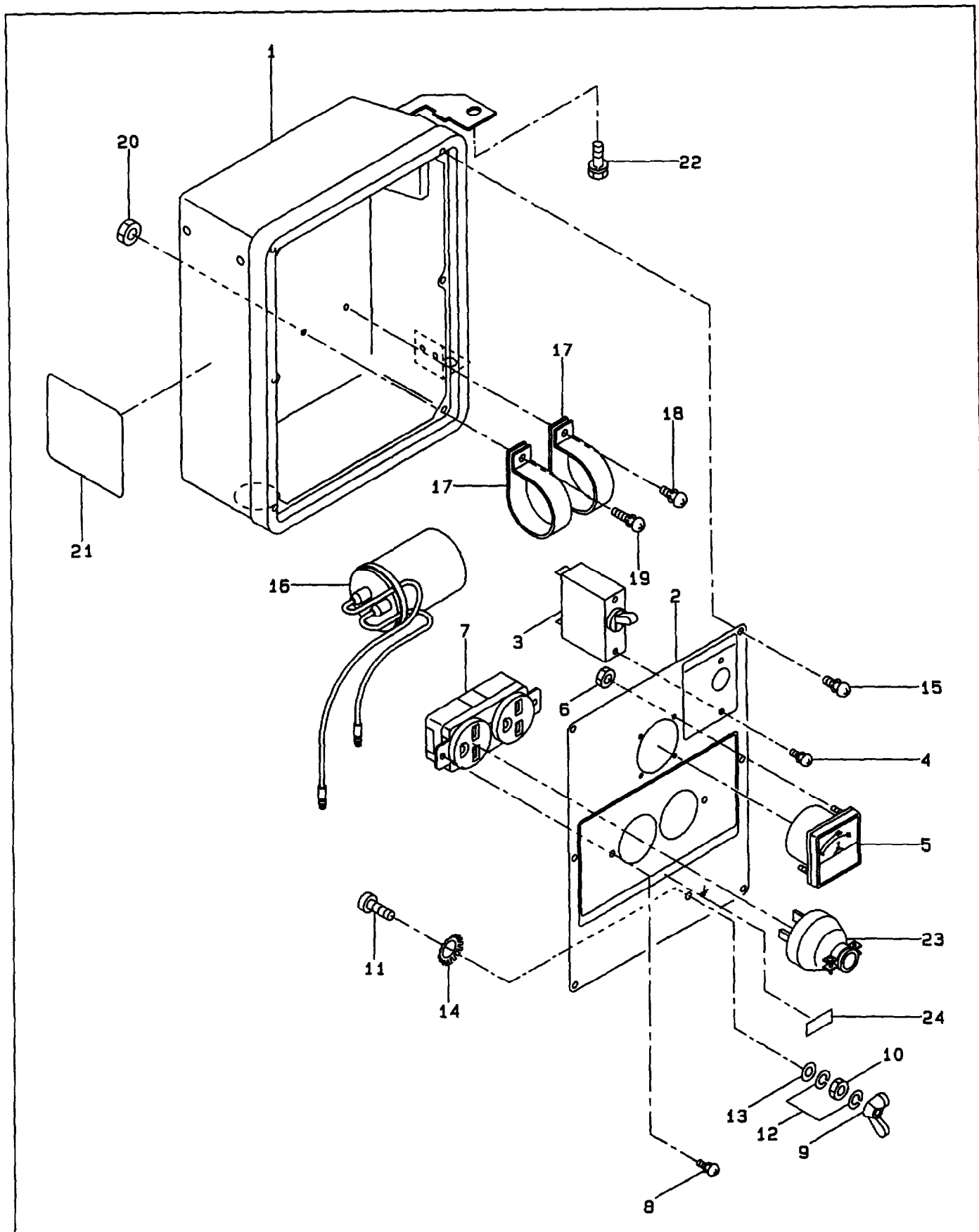


FIG. 3-2 CONTROL BOX (220V, 240V) (FOR RGX2410)

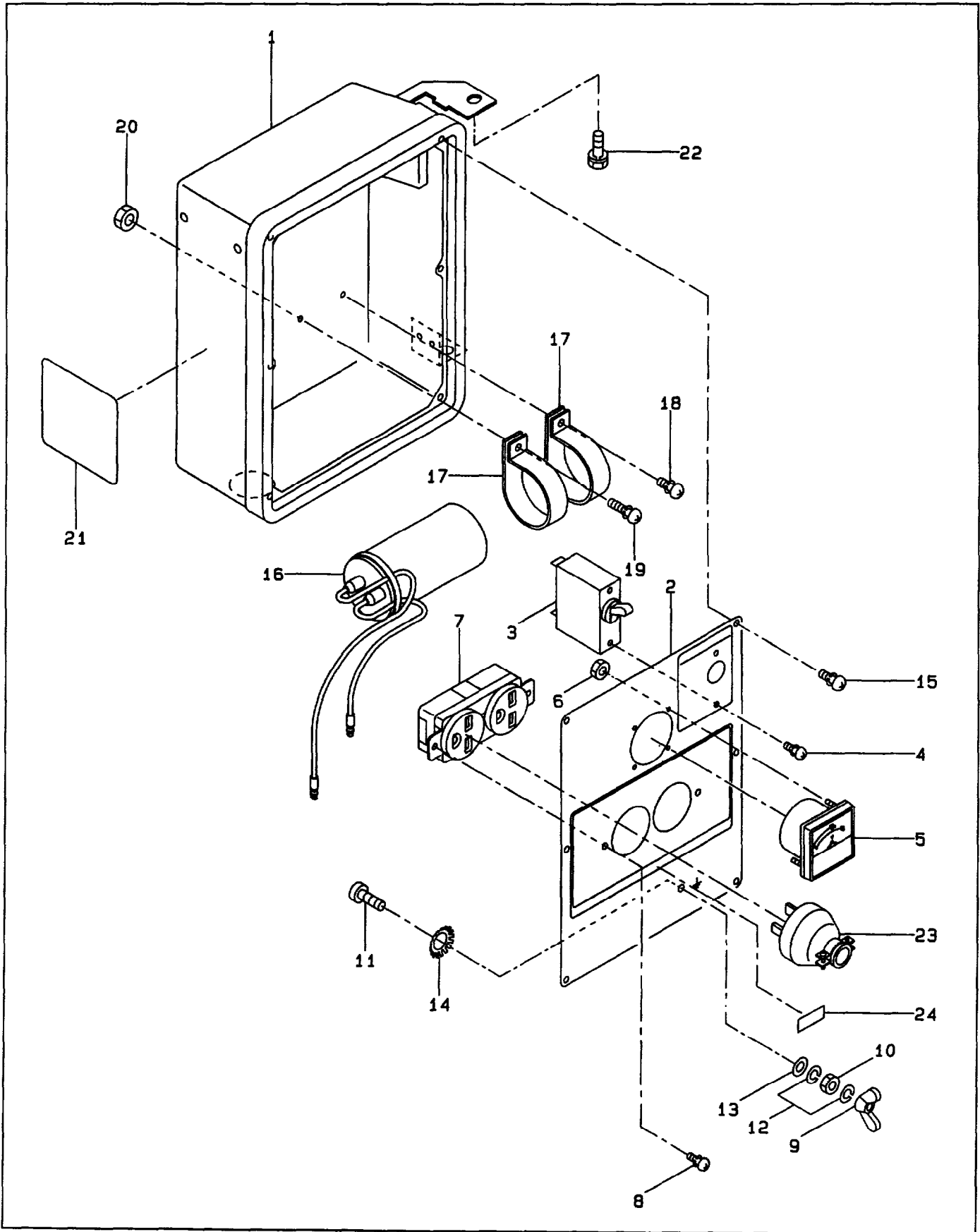


FIG. 3-2 CONTROL BOX (220V, 240V) (FOR RGX2410)

↙ Interchangeability

Ref. No.	Parts Number	Description	Q'ty	Execution
* 1	388 - 76501 - 00	CONTROL BOX ASS'Y Includes items 1 thru 21 For 50Hz - 220V For English	1	
* 1	388 - 76504 - 00	CONTROL BOX ASS'Y Includes items 1 thru 21 For 50Hz - 220V For Chinese	1	
* 1	388 - 76506 - 00	CONTROL BOX ASS'Y Includes items 1 thru 21 and 24 For 50Hz - 240V For English	1	
* 1	388 - 76507 - 00	CONTROL BOX ASS'Y Includes items 1 thru 21 For 60Hz - 220V For English	1	
1	388 - 76401 - 02	CONTROL BOX, compl.	1	
* 2	388 - 76001 - 00	CONTROL PANEL A ASS'Y Includes items 2 thru 14 For 50Hz - 220V For English	1	
* 2	388 - 76004 - 00	CONTROL PANEL A ASS'Y Includes items 2 thru 14 For 50Hz - 220V For Chinese	1	
* 2	388 - 76006 - 00	CONTROL PANEL A ASS'Y Includes items 2 thru 14 For 50Hz - 240V For English and 24	1	
* 2	388 - 76007 - 00	CONTROL PANEL A ASS'Y Includes items 2 thru 14 For 60Hz - 220V For English	1	
2	388 - 76101 - 01	CONTROL PANEL A, compl. For English	1	
2	388 - 76104 - 01	CONTROL PANEL A, compl. For Chinese	1	
3	30B - 43001 - 03	NO FUSE BREAKER (8A) For 50Hz - 220V	1	
3	387 - 76701 - 03	NO FUSE BREAKER (7A) For 50Hz - 240V	1	
3	30B - 73001 - 03	NO FUSE BREAKER (9A) For 60Hz - 220V	1	
4	004 - 35030 - 60	SCREW and WASHER ASS'Y (M3 × 6mm)	2	
5	391 - 47902 - 01	VOLTMETER (AC200V)	1	
6	388 - 49801 - 08	NUT (M3)	2	
7	31C - 75101 - 03	RECEPTACLE (250V - 15A)	1	
8	004 - 35041 - 00	SCREW and WASHER ASS'Y (M4 × 10mm)	2	
9	353 - 49901 - 08	WING NUT (M5)	1	
10	353 - 49902 - 08	NUT (M5)	1	
11	356 - 49907 - 08	SCREW (M5 × 15mm)	1	
12	332 - 00050 - 08	SPRING WASHER	2	
13	353 - 49903 - 08	WASHER	1	
14	372 - 59950 - 08	LOCK WASHER	1	
15	353 - 49904 - 08	SCREW (M4 × 10mm)	6	
16	388 - 76301 - 01	CONDENSER, compl. (20 μ F)	1	
17	380 - 47531 - 08	CONDENSER HOLDER	2	
18	004 - 35041 - 00	SCREW and WASHER ASS'Y (M4 × 10mm)	1	
19	389 - 59989 - 08	SCREW and WASHER ASS'Y (M4 × 15mm)	1	
20	389 - 59990 - 08	NUT (M4)	2	
21	388 - 87001 - 03	LABEL (SPEC) For 50Hz - 220V For English	1	
21	388 - 87005 - 03	LABEL (SPEC) For 50Hz - 220V For Chinese	1	
21	388 - 87007 - 03	LABEL (SPEC) For 50Hz - 240V For English	1	
21	388 - 87008 - 03	LABEL (SPEC) For 60Hz - 220V For English	1	
22	001 - 10061 - 20	BOLT and WASHER ASS'Y (M6 × 15mm)	1	

FIG. 3-2 CONTROL BOX (220V, 240V) (FOR RGX2410)

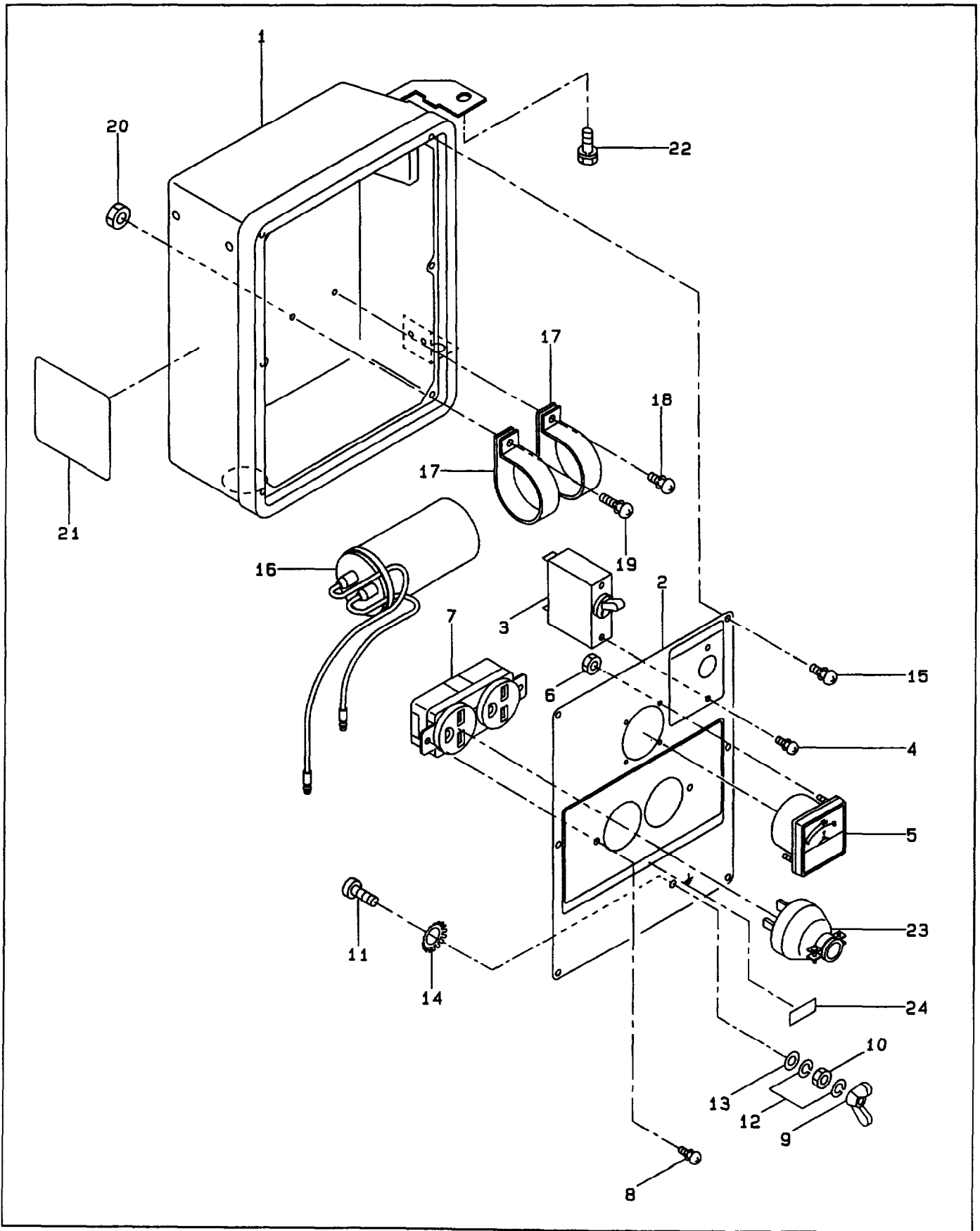


FIG. 3-3 CONTROL BOX (60Hz-110V)

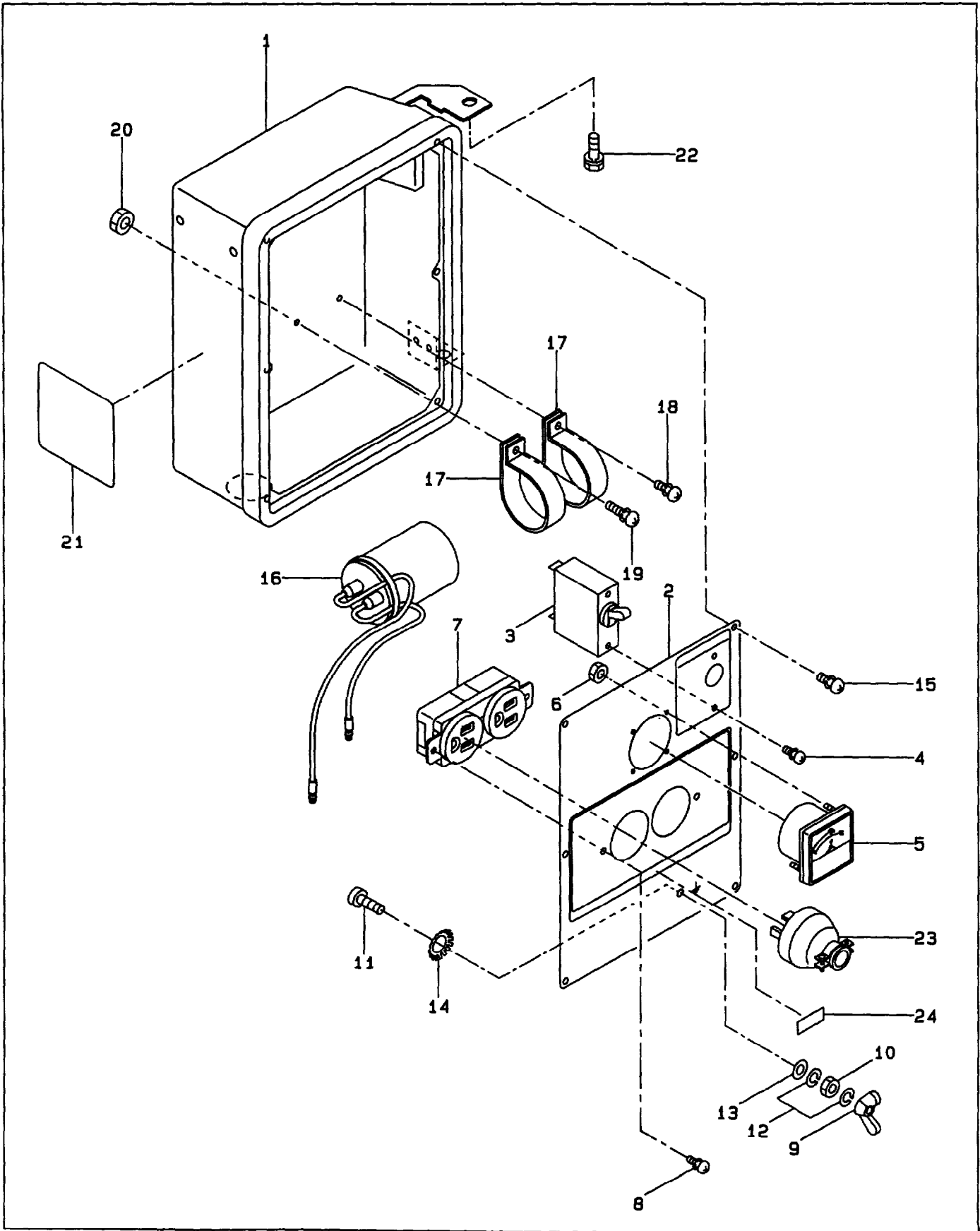


FIG. 3-3 CONTROL BOX (60Hz-110V)

↔ Interchangeability

Ref. No.	Parts Number	Description	Q'ty	Execution
* 1	387 - 76507 - 00	CONTROL BOX ASS'Y Includes items 1 thru 21 and 24 For RGX1810	1	
* 1	388 - 76502 - 00	CONTROL BOX ASS'Y Includes items 1 thru 21 and 24 For RGX2410	1	
1	388 - 76401 - 02	CONTROL BOX, compl.	1	
* 2	387 - 76007 - 00	CONTROL PANEL A ASS'Y Includes items 2 thru 14 and 24 For RGX1810	1	
* 2	388 - 76002 - 00	CONTROL PANEL A ASS'Y Includes items 2 thru 14 and 24 For RGX2410	1	
2	388 - 76101 - 01	CONTROL PANEL A, compl.	1	
3	385 - 45651 - 08	NO FUSE BREAKER (14A) For RGX1810	1	
3	391 - 43005 - 03	NO FUSE BREAKER (18A) For RGX2410	1	
4	004 - 35030 - 60	SCREW and WASHER ASS'Y (M3 x 6mm)	2	
5	391 - 47802 - 01	VOLTMETER (AC100V)	1	
6	388 - 49801 - 08	NUT (M3)	2	
7	343 - 11362 - 18	RECEPTACLE (125V - 15A)	1	
8	004 - 35041 - 00	SCREW and WASHER ASS'Y (M4 x 10mm)	2	
9	353 - 49901 - 08	WING NUT (M5)	1	
10	353 - 49902 - 08	NUT (M5)	1	
11	356 - 49907 - 08	SCREW (M5 x 15mm)	1	
12	332 - 00050 - 08	SPRING WASHER	2	
13	353 - 49903 - 08	WASHER	1	
14	372 - 59950 - 08	LOCK WASHER	1	
15	353 - 49904 - 08	SCREW (M4 x 10mm)	6	
16	387 - 76301 - 01	CONDENSER, compl. (17 µ F) For RGX1810	1	
16	388 - 76301 - 01	CONDENSER, compl. (20 µ F) For RGX2410	1	
17	380 - 47531 - 08	CONDENSER HOLDER	2	
18	004 - 35041 - 10	SCREW and WASHER ASS'Y (M4 x 10mm)	1	
19	389 - 59989 - 08	SCREW and WASHER ASS'Y (M4 x 15mm)	1	
20	389 - 59990 - 08	NUT (M4)	2	
21	387 - 87007 - 03	LABEL (SPEC) For RGX1810	1	
21	388 - 87002 - 03	LABEL (SPEC) For RGX2410	1	
22	001 - 10061 - 20	BOLT and WASHER ASS'Y (M6 x 15mm)	1	
23	320 - 75176 - 08	AC PLUG (125V - 15A)	2	
24	353 - 49031 - 08	LABEL (AC110V)	1	

FIG. 3-4 CONTROL BOX (60Hz-110V / 220V)

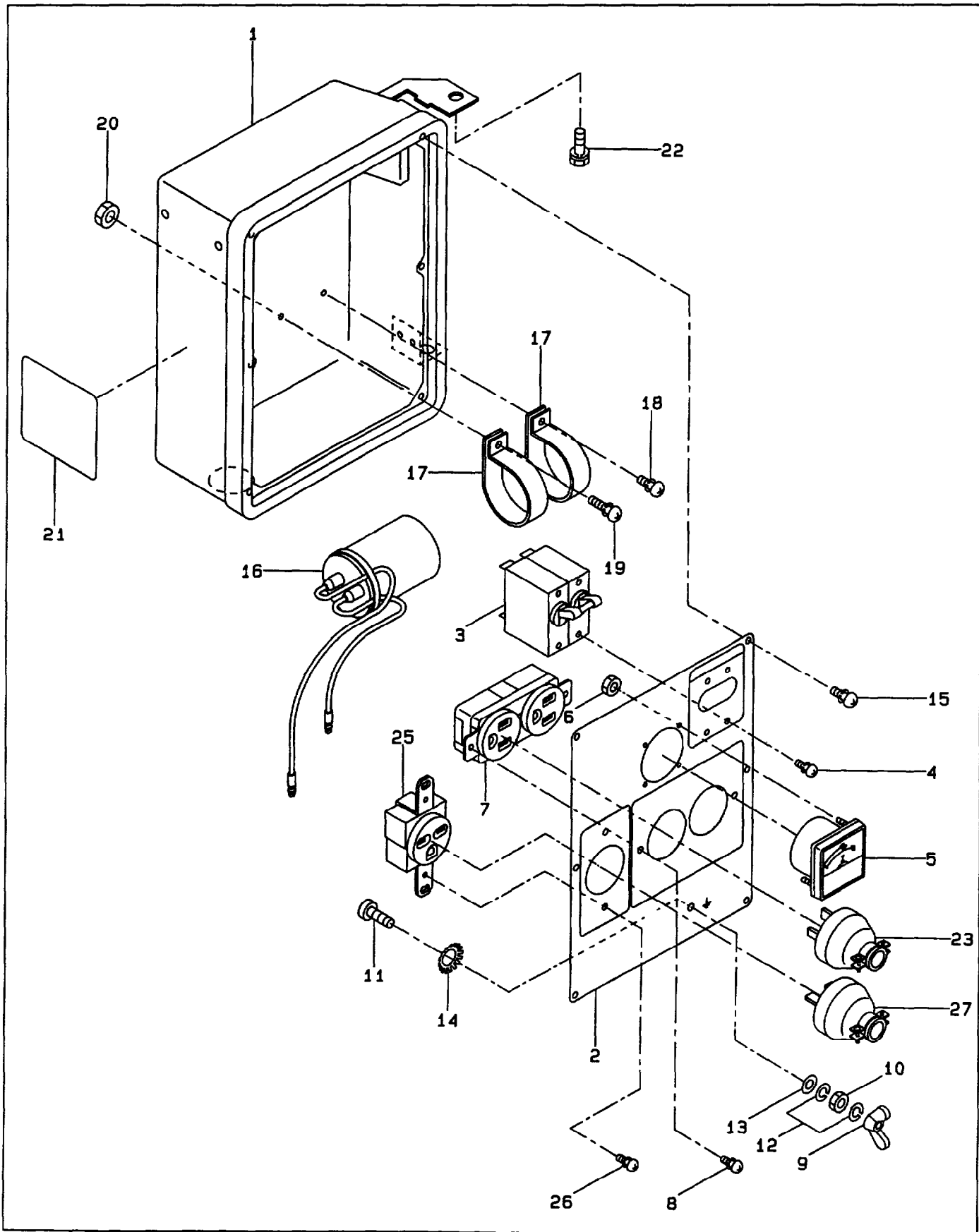


FIG. 3-4 CONTROL BOX (60Hz-110V / 220V)

Interchangeability

Ref. No.	Parts Number	Description	Q'ty	Execution
* 1	387 - 76505 - 00	CONTROL BOX ASS'Y Includes items 1 thru 21 25 and 26 For RGX1810	1	
* 1	388 - 76503 - 00	CONTROL BOX ASS'Y Includes items 1 thru 21 25 and 26 For RGX2410	1	
1	388 - 76401 - 02	CONTROL BOX, compl.	1	
* 2	387 - 76005 - 00	CONTROL PANEL A ASS'Y Includes items 2 thru 14 25 and 26 For RGX1810	1	
* 2	388 - 76003 - 00	CONTROL PANEL A ASS'Y Includes items 2 thru 14 25 and 26 For RGX2410	1	
2	388 - 76102 - 01	CONTROL PANEL A, compl.	1	
3	387 - 76702 - 03	NO FUSE BREAKER (7A) For RGX1810	1	
3	30B - 43004 - 03	NO FUSE BREAKER (9A) For RGX2410	1	
4	004 - 35030 - 60	SCREW and WASHER ASS'Y (M3 x 6mm)	4	
5	391 - 47802 - 01	VOLTMETER (AC100V)	1	
6	388 - 49801 - 08	NUT (M3)	2	
7	343 - 11362 - 18	RECEPTACLE (125V - 15A)	1	
8	004 - 35041 - 00	SCREW and WASHER ASS'Y (M4 x 10mm)	2	
9	353 - 49901 - 08	WING NUT (M5)	1	
10	353 - 49902 - 08	NUT (M5)	1	
11	356 - 49907 - 08	SCREW (M5 x 15mm)	1	
12	332 - 00050 - 08	SPRING WASHER	2	
13	353 - 49903 - 08	WASHER	1	
14	372 - 59950 - 08	LOCK WASHER	1	
15	353 - 49904 - 08	SCREW (M4 x 10mm)	6	
16	387 - 76301 - 01	CONDENSER, compl. (17 μ F) For RGX1810	1	
16	388 - 76301 - 01	CONDENSER, compl. (20 μ F) For RGX2410	1	
17	380 - 47531 - 08	CONDENSER HOLDER	2	
18	004 - 35041 - 10	SCREW and WASHER ASS'Y (M4 x 10mm)	1	
19	389 - 59989 - 08	SCREW and WASHER ASS'Y (M4 x 15mm)	1	
20	389 - 59990 - 08	NUT (M4)	2	
21	387 - 87006 - 03	LABEL (SPEC) For RGX1810	1	
21	388 - 87003 - 03	LABEL (SPEC) For RGX2410	1	
22	001 - 10061 - 20	BOLT and WASHER ASS'Y (M6 x 15mm)	1	
23	320 - 75176 - 08	AC PLUG (125V - 15A)	2	
25	378 - 45738 - 08	RECEPTACLE (250V - 15A)	1	
26	004 - 35041 - 00	SCREW and WASHER ASS'Y (M4 x 10mm)	2	
27	358 - 95001 - 03	AC PLUG (250V - 15A)	1	

FIG. 4 CRANKCASE GROUP

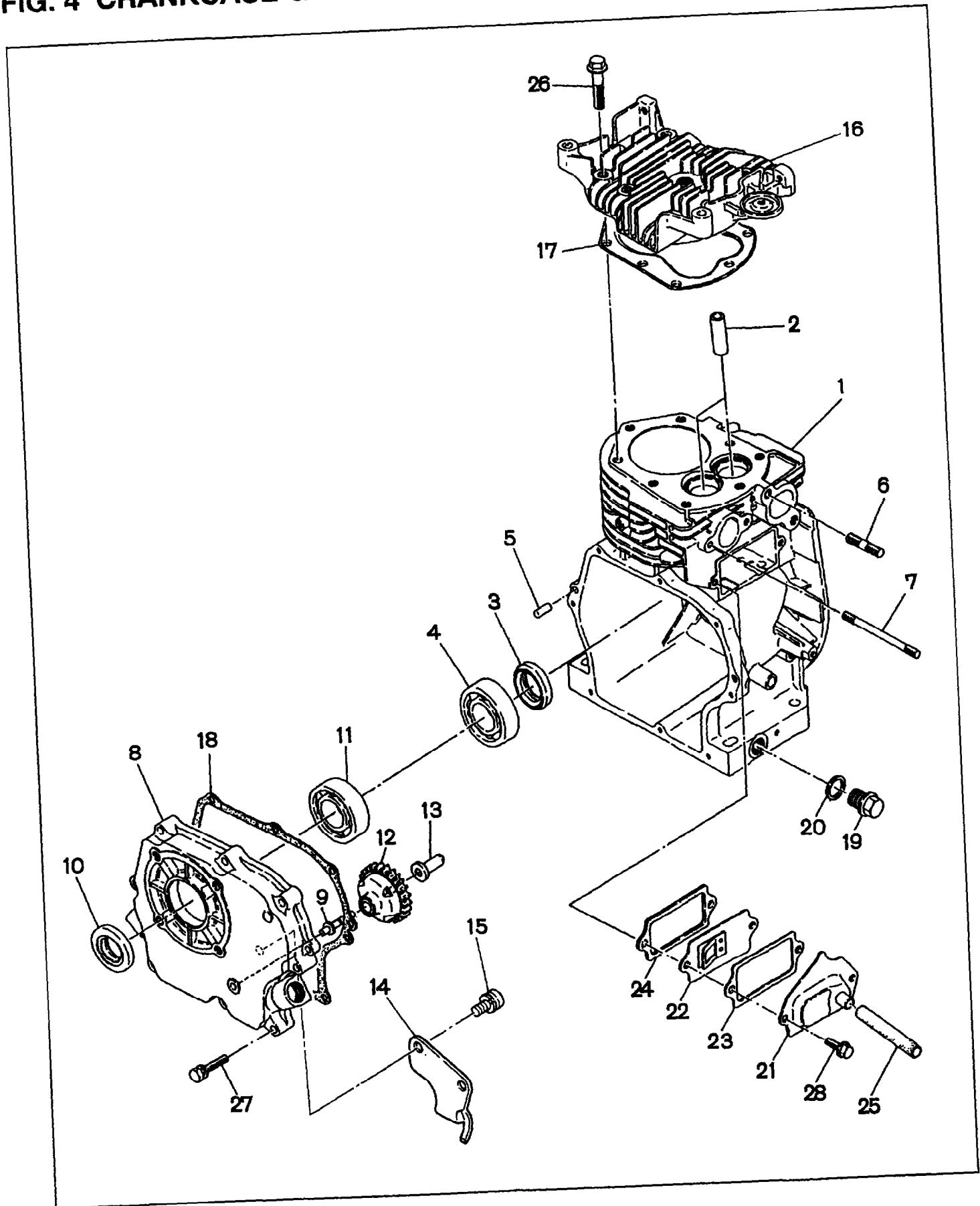


FIG. 4 CRANKCASE GROUP

Interchangeability

Ref. No.	Parts Number	Description	Q'ty	Execution
* 1	227 - 10101 - 21	CRANKCASE, compl. Includes items 2 thru 7	1	
2	227 - 14202 - 03	VALVE GUIDE (over size)	2	
3	044 - 02501 - 50	OIL SEAL (TB - 25 ϕ \times 38 ϕ \times 7mm)	1	
4	060 - 02500 - 10	BALL BEARING (BB - 6205C3)	1	
5	031 - 00600 - 20	DOWEL PIN	2	
6	010 - 50802 - 50	STUD, muffler	2	
7	010 - 50601 - 20	STUD, carburetor	2	
* 8	227 - 11006 - 11	MAIN BEARING COVER, compl. Includes items 9 thru 11	1	
* 8	227 - 11006 - 01	MAIN BEARING COVER, compl. Includes items 9 thru 11	1	
10	044 - 02501 - 60	OIL SEAL (TB - 25 ϕ \times 41.24 ϕ \times 7mm)	1	
11	060 - 02500 - 10	BALL BEARING (BB - 6205C3)	1	
12	227 - 45003 - 01	GOVERNOR GEAR, compl.	1	
13	205 - 41901 - 03	GOVERNOR SLEEVE	1	
14	227 - 17501 - 03	OIL SHELTER, sensor	1	
15	004 - 35040 - 80	SCREW and WASHER ASS'Y	2	
16	227 - 13101 - 13	CYLINDER HEAD	1	
17	227 - 15001 - 11	GASKET, compl., head	1	
18	227 - 16001 - 03	GASKET, bearing cover	1	
19	040 - 11400 - 30	PLUG	2	
20	021 - 11400 - 20	GASKET	2	
21	227 - 14301 - 01	TAPPET COVER, compl.	1	
22	227 - 14401 - 01	BREATHER PLATE, compl.	1	
23	227 - 16006 - 03	GASKET, tappet cover	1	
24	227 - 16007 - 03	GASKET, breather plate	1	
25	085 - 10800 - 00	RUBBER PIPE (8 ϕ \times 11 ϕ \times 64mm)	1	
26	011 - 00800 - 10	FLANGE BOLT	8	
27	013 - 00600 - 40	BOLT and WASHER ASS'Y	8	
28	011 - 00600 - 20	FLANGE BOLT	2	
* 227 - 99001 - 07		GASKET SET Includes items 17, 18, 23, 24 and FIG. 6 - 10, 13, 16 and 17, Fig. 9 - 25	1	

FIG. 5 CRANKSHAFT and PISTON GROUP

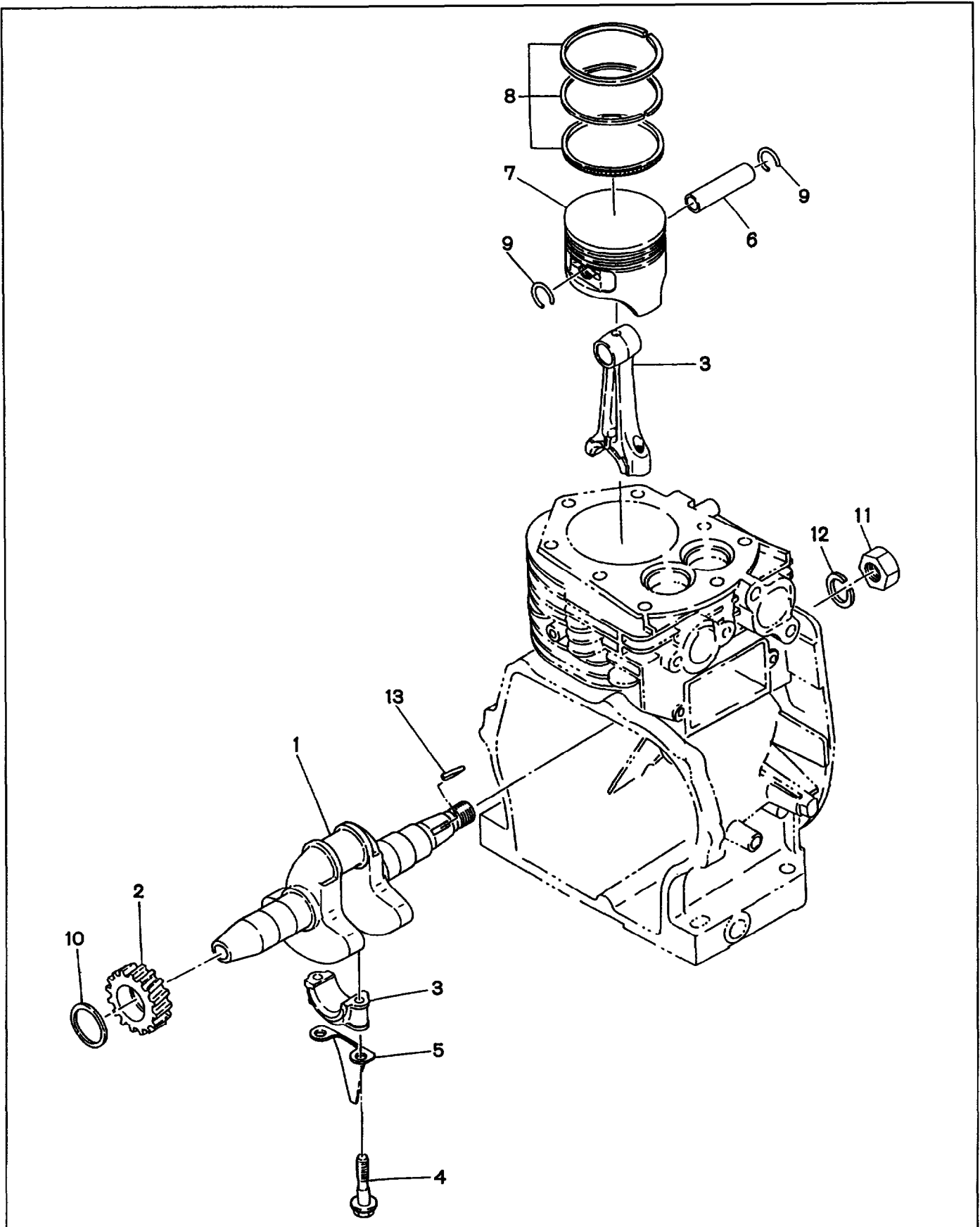


FIG. 6 INTAKE and EXHAUST GROUP

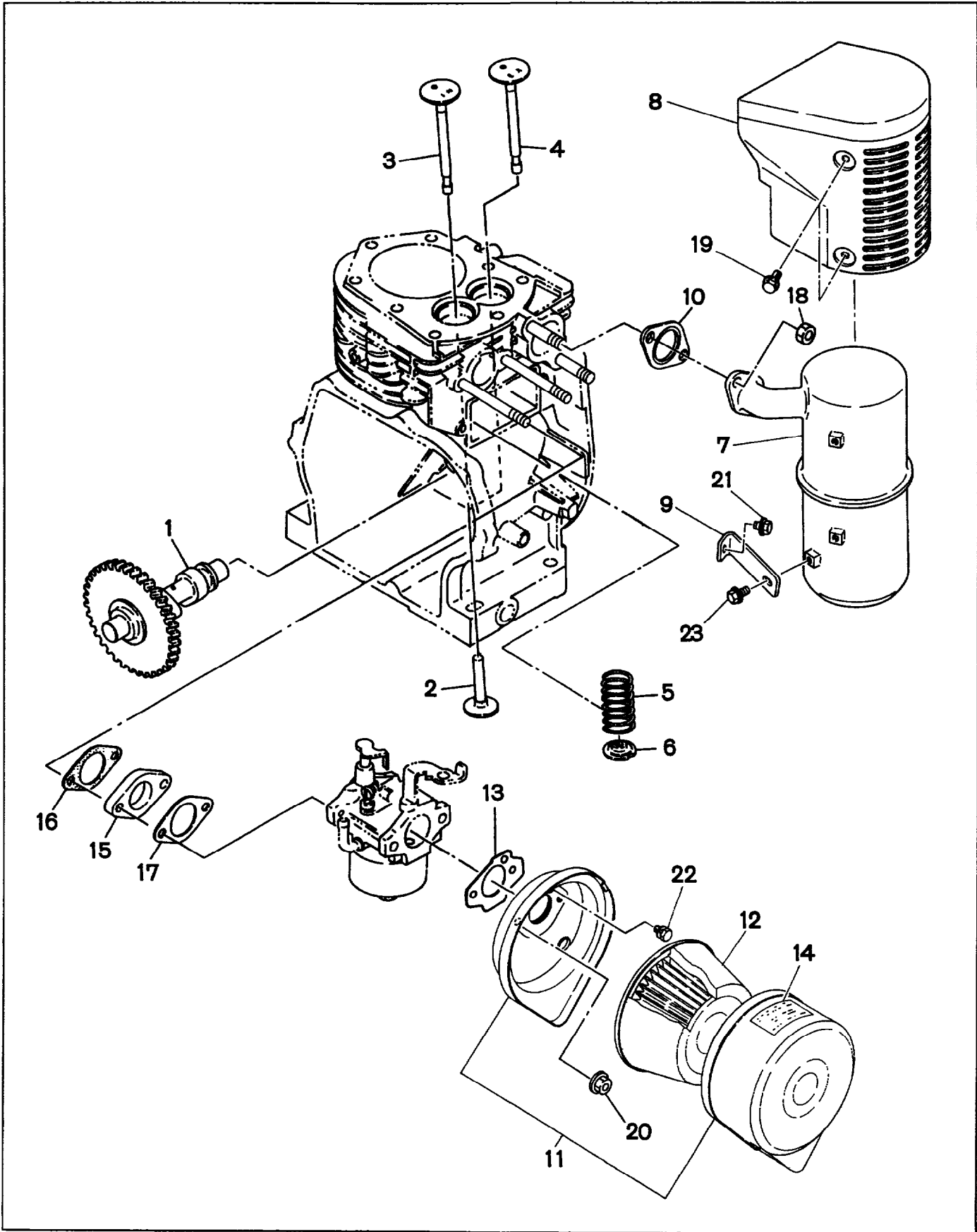


FIG. 6 INTAKE and EXHAUST GROUP

↖ Interchangeability

Ref. No.	Parts Number	Description	Q'ty	Execution
1	227 - 31702 - 11	CAMSHAFT, compl.	1	
2	227 - 33301 - 03	TAPPET	2	
3	227 - 33401 - 03	INTAKE VALVE	1	
4	227 - 33501 - 13	EXHAUST VALVE	1	
5	227 - 33601 - 03	VALVE SPRING	2	
6	227 - 33701 - 03	SPRING RETAINER	2	
7	227 - 30203 - 01	MUFFLER, compl.	1	
8	227 - 34210 - 21	MUFFLER COVER, compl.	1	
9	227 - 37001 - 01	MUFFLER BRACKET	1	
10	214 - 35201 - 11	GASKET compl., exhaust	1	
*11	227 - 32613 - 00	AIR CLEANER ASS'Y Includes items 12 and 13	1	AFTER OCT. '95
*11	227 - 32610 - 20	AIR CLEANER ASS'Y Includes items 12 thru 14	1	
12	227 - 32610 - 07	CLEANER ELEMENT SET	1	
13	227 - 36003 - 13	GASKET, air cleaner	1	
14	106 - 32738 - 08	LABEL, air cleaner	1	UP TO SEP. '95
15	227 - 32901 - 13	INSULATOR	1	
16	227 - 35901 - 03	GASKET, insulator	1	
17	227 - 35904 - 03	GASKET 2, insulator	1	
18	002 - 19080 - 00	NUT	2	
19	011 - 00600 - 10	FLANGE BOLT	4	
20	226 - 39212 - 00	NUT and WASHER ASS'Y	2	
21	011 - 00600 - 20	FLANGE BOLT	1	
22	001 - 10061 - 20	BOLT and WASHER ASS'Y	1	
23	001 - 11061 - 20	BOLT and WASHER ASS'Y	1	

FIG. 7 GOVERNOR, OPERATE GROUP

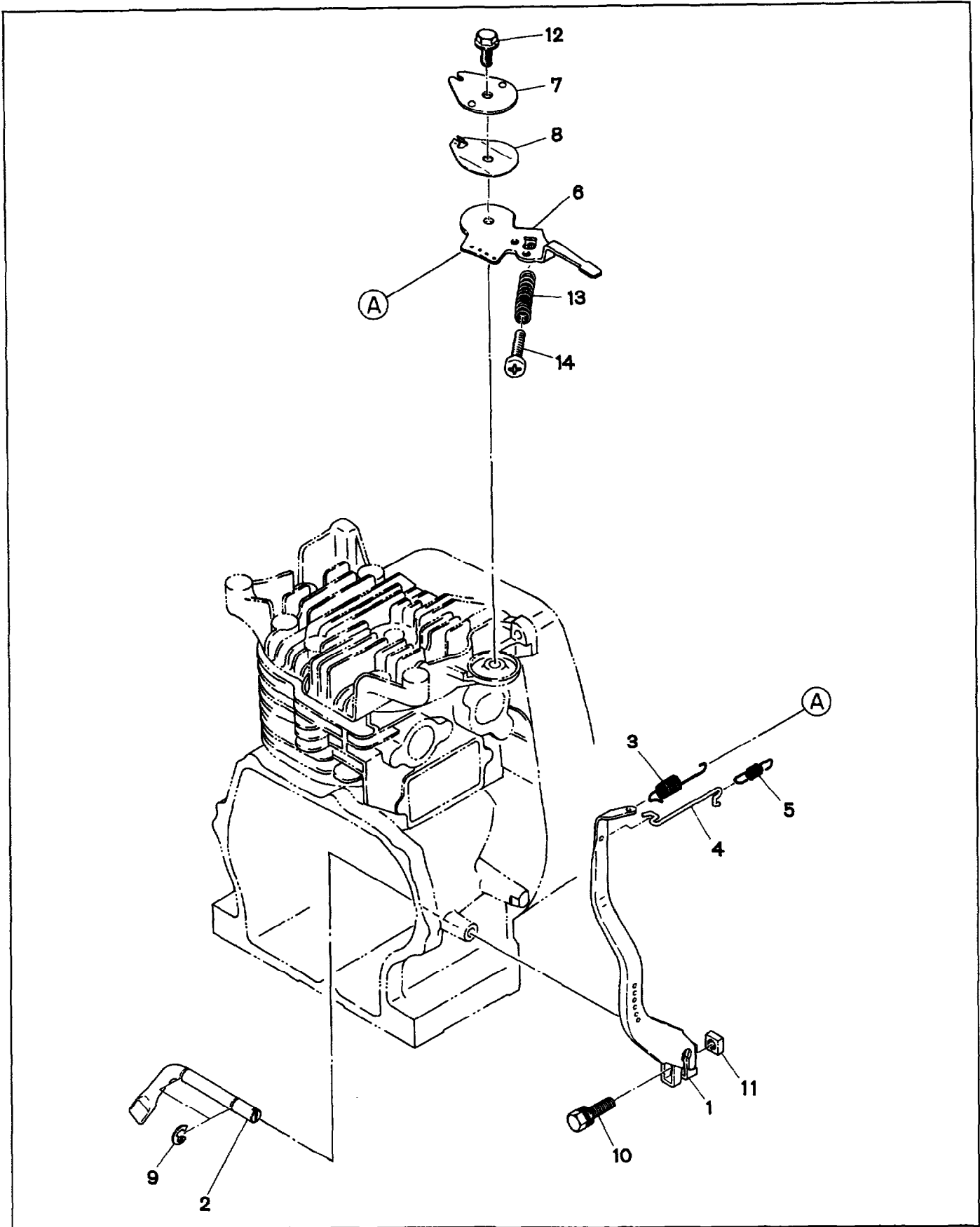


FIG. 8 COOLING and STARTING GROUP

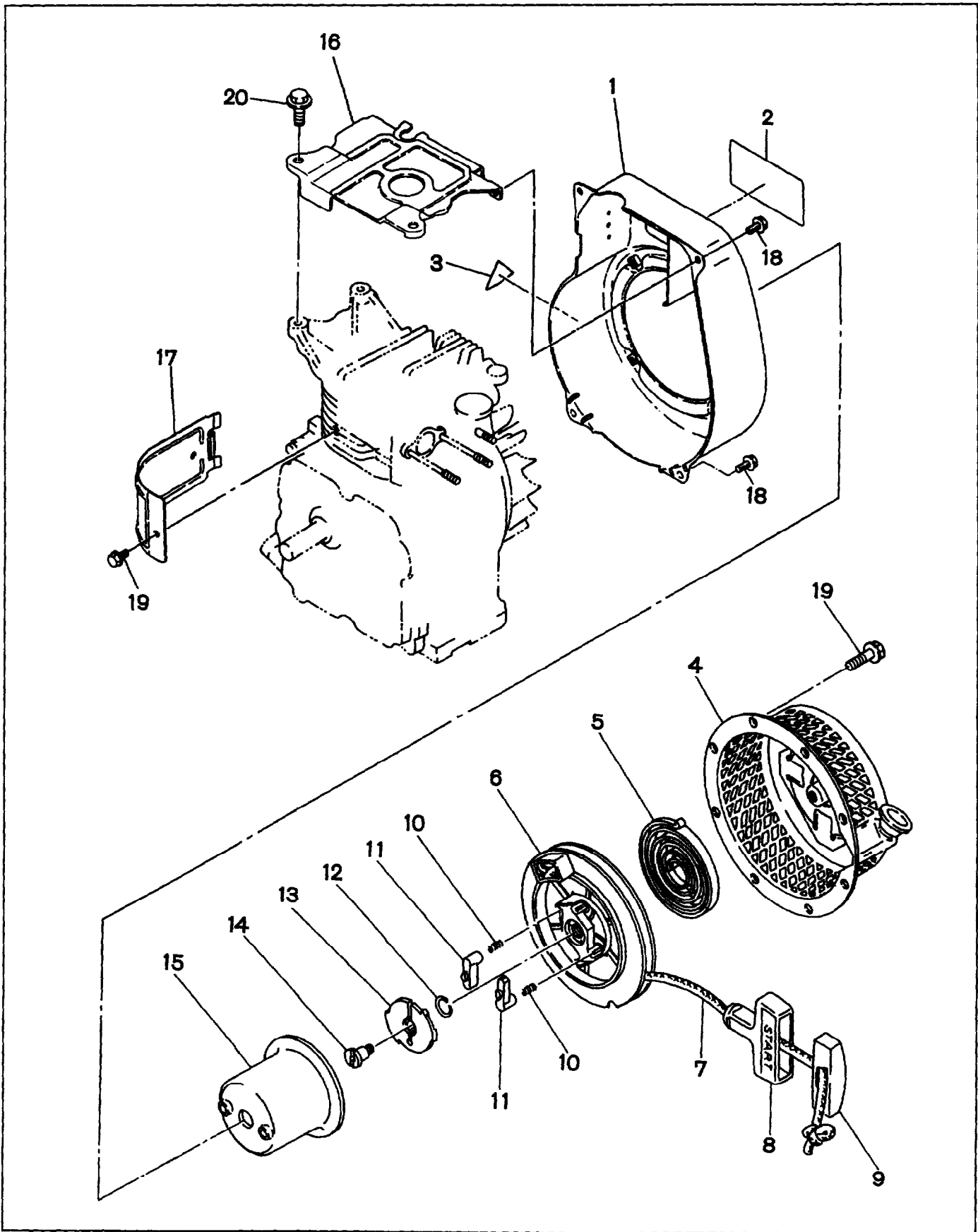


FIG. 9 FUEL, LUBRICANT GROUP

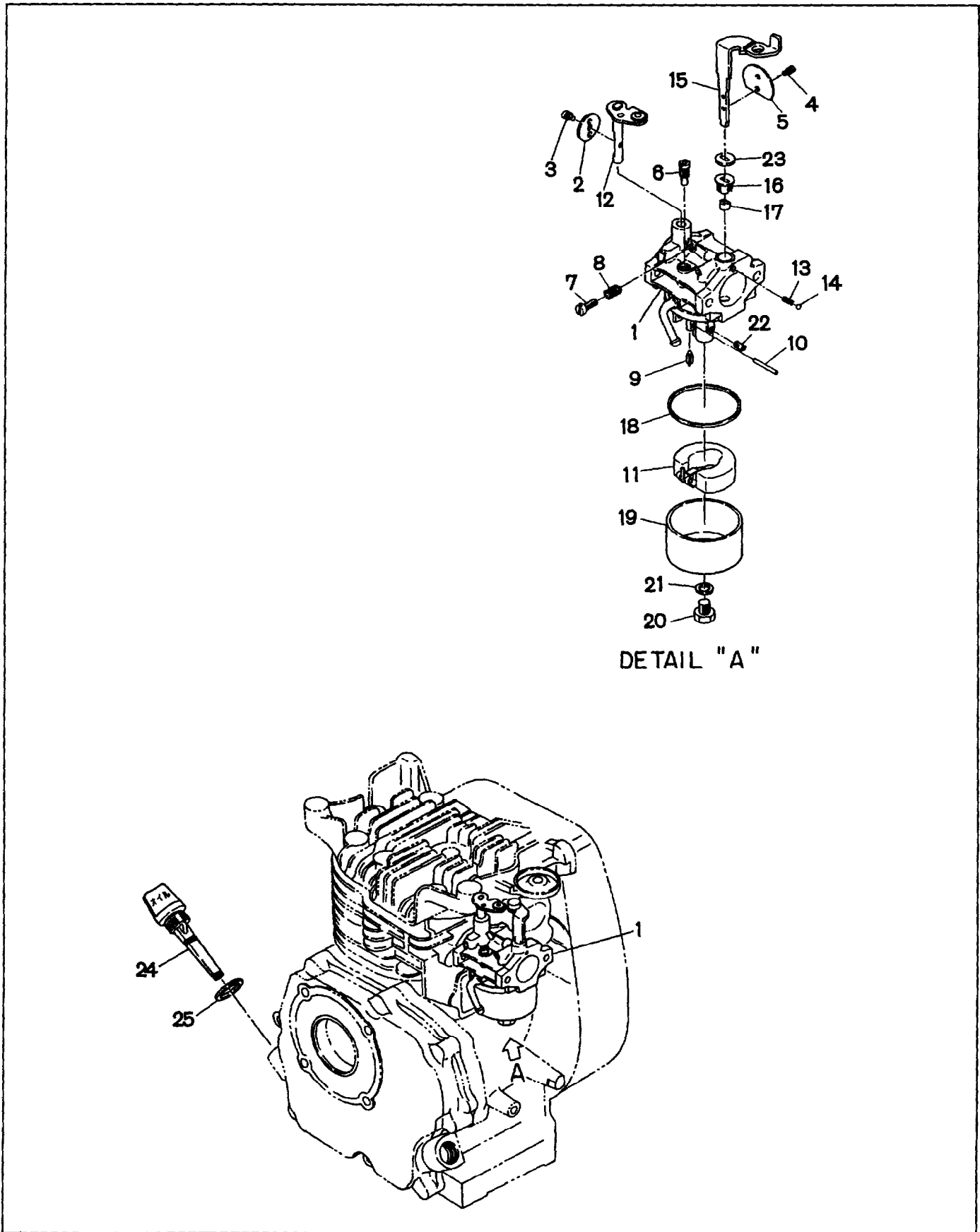


FIG. 10 ELECTRIC DEVICE GROUP

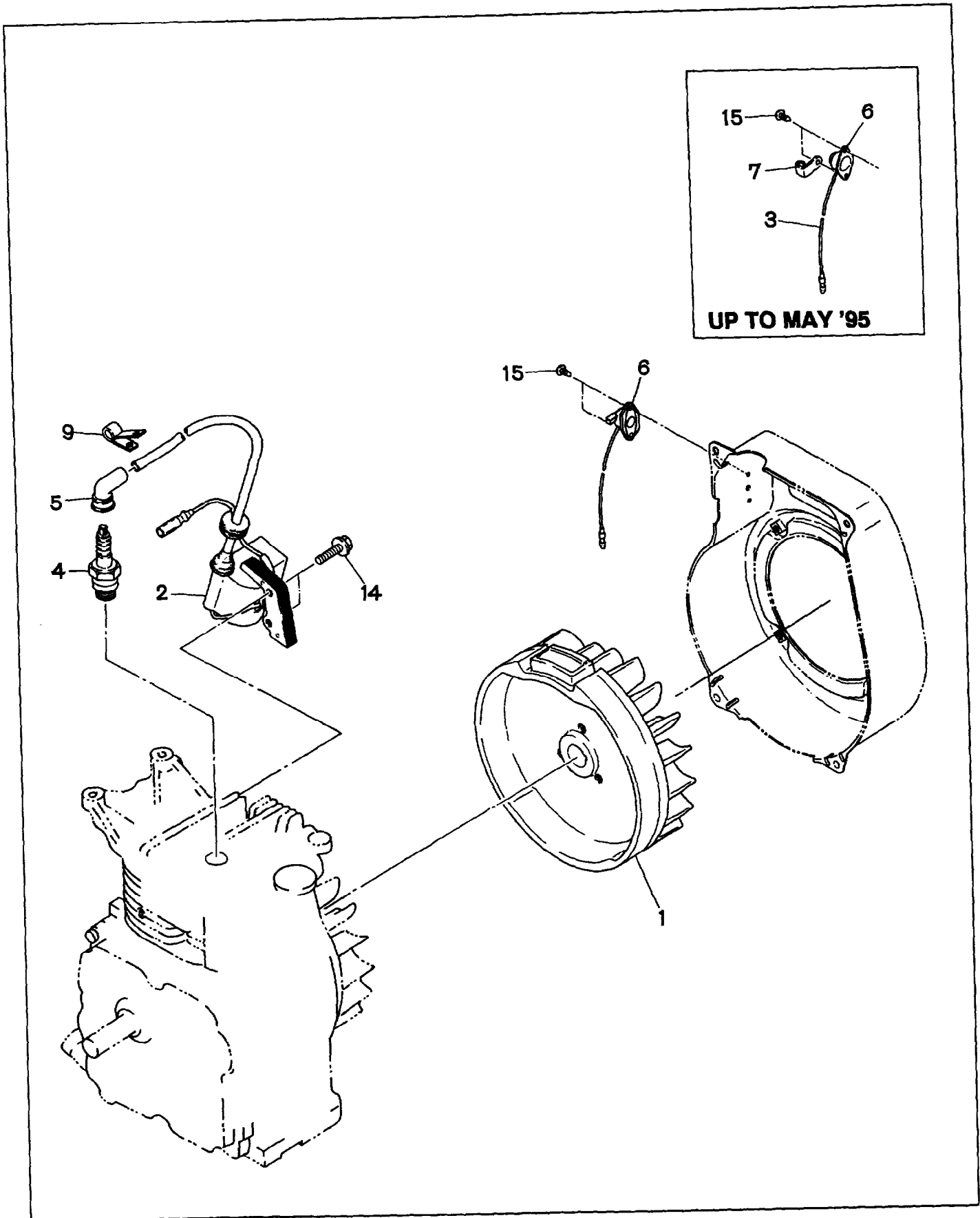


FIG. 10 ELECTRIC DEVICE GROUP

OIL SENSOR PARTS (UP TO AUG. '95)

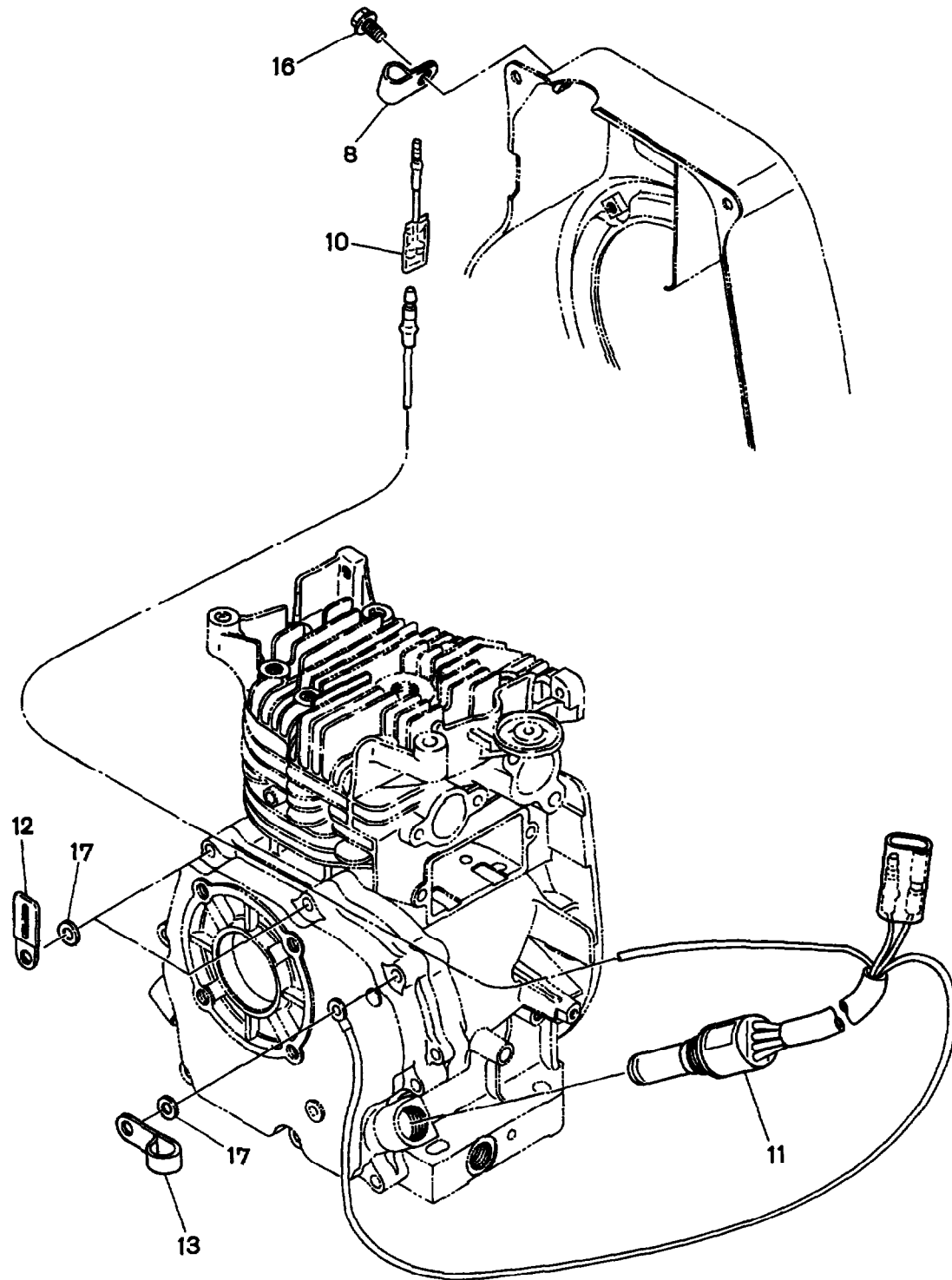


FIG. 10 ELECTRIC DEVICE GROUP

OIL SENSOR PARTS (AFTER SEP. '95)

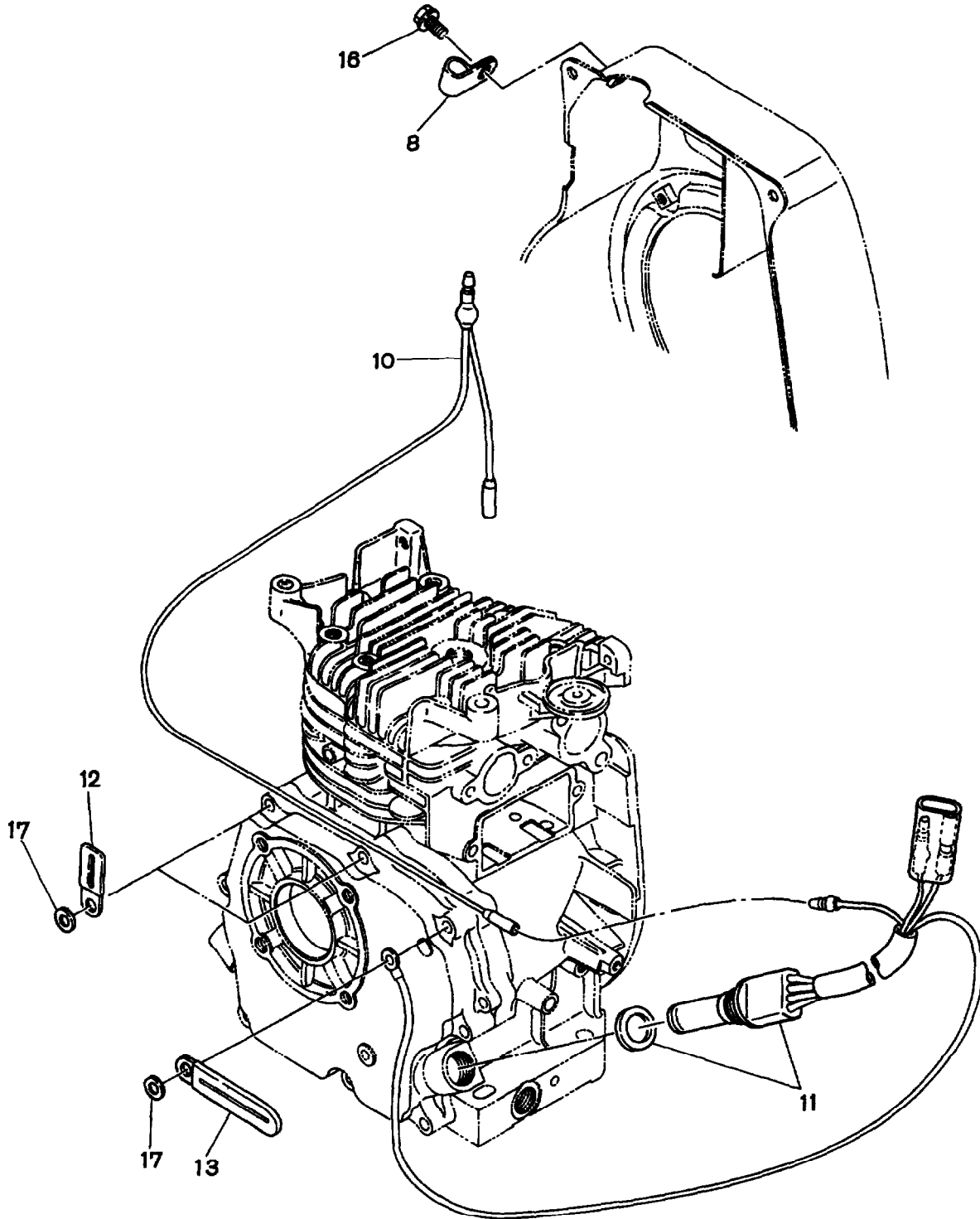


FIG. 11 ACCESSORIES GROUP

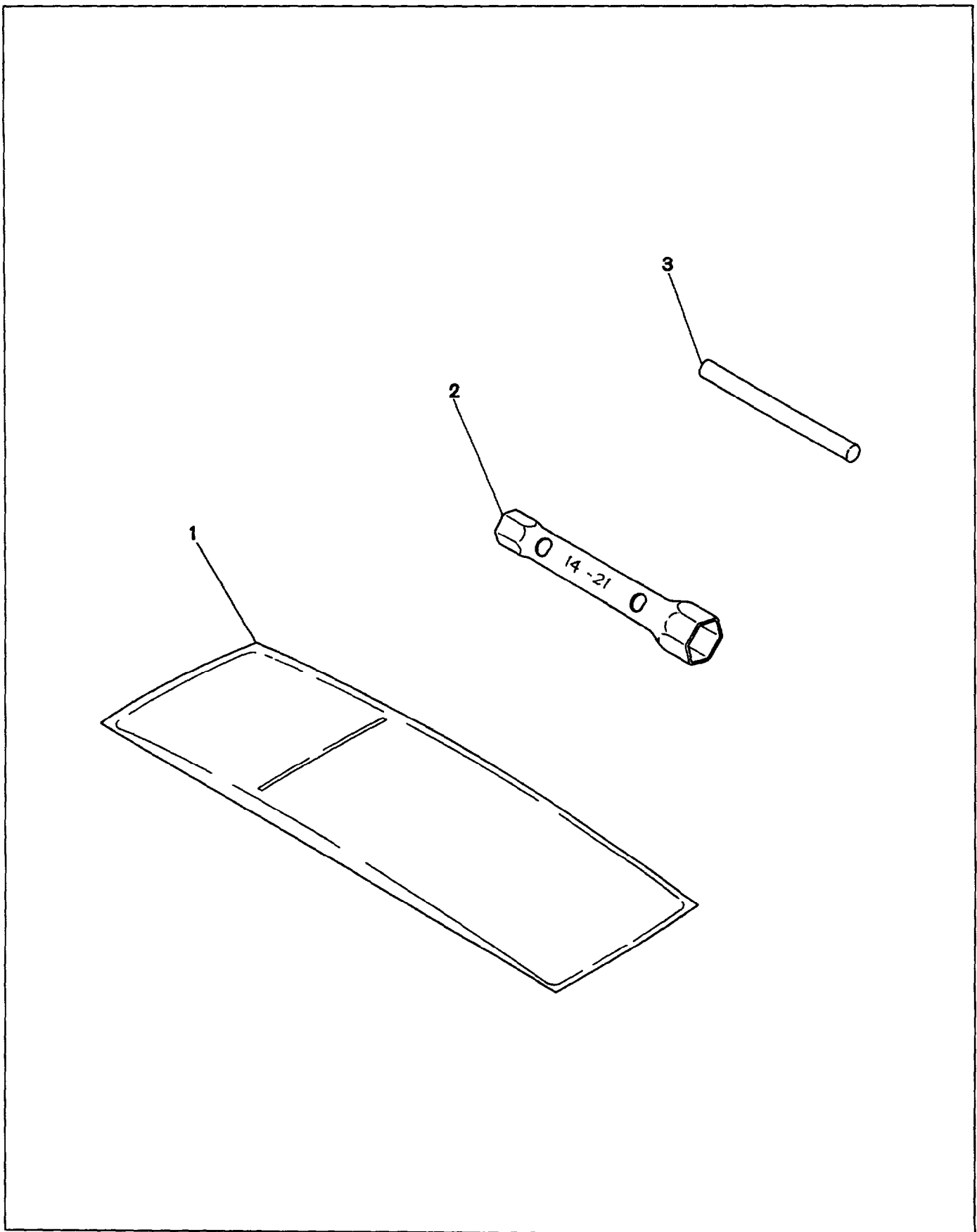


FIG. 12 WHEEL, HANDLE and HANGER

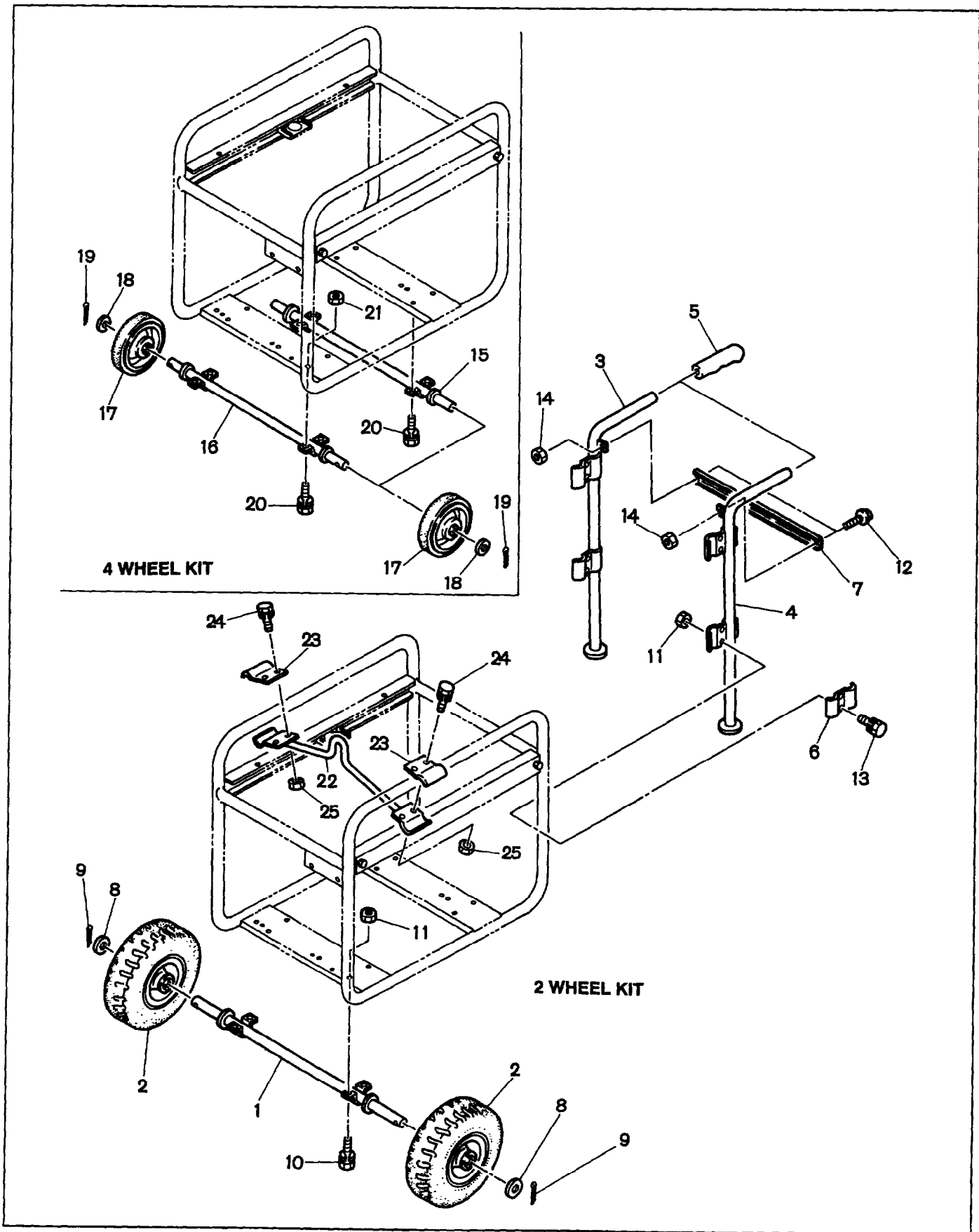


FIG. 12 WHEEL, HANDLE and HANGER

Interchangeability

Ref. No.	Parts Number	Description	Q'ty	Execution
* 1	387 - 56524 - 08	2 WHEEL KIT Includes items 1 thru 14	1	
1	388 - 56535 - 08	SHAFT, compl.	1	
2	450 - 00009 - 90	LARGE WHEEL	2	
* 3	388 - 56540 - 08	HANDLE 1 Includes item 5	1	
* 4	388 - 56541 - 08	HANDLE 2 Includes item 5	1	
5	360 - 57601 - 08	GRIP	2	
6	388 - 56542 - 08	BRACKET, handle	4	
7	388 - 56543 - 08	HANDLE GUIDE	1	
8	385 - 54387 - 08	WASHER	2	
9	005 - 10404 - 00	COTTER PIN	2	
10	001 - 14081 - 60	BOLT and WASHER ASS'Y	4	
11	002 - 17080 - 00	NUT	12	
12	011 - 00600 - 30	FLANGE BOLT	2	
13	001 - 14082 - 00	BOLT and WASHER ASS'Y	8	
14	002 - 17060 - 00	NUT	2	
* 15	387 - 54419 - 08	4 WHEEL KIT Includes items 15 thru 21	1	
15	388 - 54439 - 08	SHAFT, compl. For Engine side	1	
16	388 - 54440 - 08	SHAFT, compl. For Generator side	1	
17	385 - 54389 - 08	WHEEL	4	
18	385 - 54390 - 08	WASHER	4	
19	005 - 10404 - 00	COTTER PIN	4	
20	001 - 14081 - 60	BOLT and WASHER ASS'Y	8	
21	002 - 17080 - 00	NUT	8	
* 22	388 - 54400 - 08	HANGER KIT Includes items 22 thru 25	1	
22	388 - 54401 - 08	HANGER	1	
23	388 - 54402 - 08	BRACKET, hanger	2	
24	001 - 14082 - 00	BOLT and WASHER ASS'Y	4	
25	002 - 17080 - 00	NUT	4	

 **FUJI HEAVY INDUSTRIES LTD.****INDUSTRIAL PRODUCTS DIV.**

Subaru Bldg.

1-7-2, Nishi-Shinjuku, Shinjuku-ku, Tokyo 160, Japan

PHONE ; (Tokyo 03) 3347-2420

FACSIMILE ; (Tokyo 03) 3347-2418

PRINTED IN JAPAN
August 1996 CE

Free Manuals Download Website

<http://myh66.com>

<http://usermanuals.us>

<http://www.somanuals.com>

<http://www.4manuals.cc>

<http://www.manual-lib.com>

<http://www.404manual.com>

<http://www.luxmanual.com>

<http://aubethermostatmanual.com>

Golf course search by state

<http://golfingnear.com>

Email search by domain

<http://emailbydomain.com>

Auto manuals search

<http://auto.somanuals.com>

TV manuals search

<http://tv.somanuals.com>