

Congratulations on your purchase of the Sony Ericsson W950. Enjoy this slim and stylish 3G Walkman® phone with advanced digital music player and large touchscreen. In addition to the pre-installed W950 content and applications, you have more waiting for you at [www.sonyericsson.com/fun](http://www.sonyericsson.com/fun). And if you register at [www.sonyericsson.com/register](http://www.sonyericsson.com/register), you get an exclusive offer. Don't miss out. Go there now.

## Accessory information

### Stereo Bluetooth™ Headset HBH-DS970

Wireless music in stereo quality



### Music Desk Stand MDS-60

Superior stereo sound wherever you go



### Stereo Portable Handsfree HPM-85

High quality headphones for a greater music experience



## Transferring contacts from a SIM card

If you have an old SIM card with valuable contacts information, you can transfer this information to your new phone.

*To copy from SIM to Contacts*

1. Select **Contacts**.
2. In the **More** menu, select **View folder > SIM** to access the contacts on your SIM card.
3. Mark the entries that you want to copy.
4. In the **More** menu, select **Copy to Contacts**.

## Downloading settings

Settings for Internet, email and MMS may be downloaded from your network operator, or from Sony Ericsson. In the first place, contact your network operator.

*To download settings from Sony Ericsson*

On your computer, browse to [www.sonyericsson.com/support](http://www.sonyericsson.com/support) and follow the instructions on the screen.

## Synchronizing

Using Bluetooth™ wireless technology, an infrared connection or the supplied USB cable you can synchronize your phone contacts, appointments, tasks and notes with the corresponding information in your computer. The necessary software can be found on the Sony Ericsson PC Suite CD delivered with your phone.

For more information on synchronization, please see the User guide, or the Web guide at [www.sonyericsson.com/support](http://www.sonyericsson.com/support).

*For copyright, trademark and legal information, please see the User guide.*

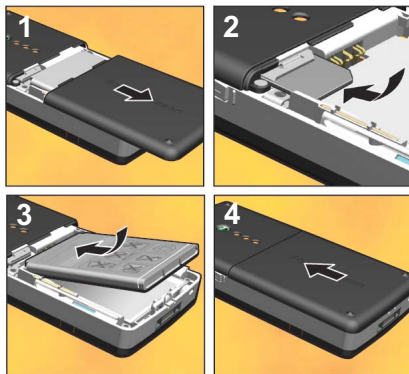
EN/LZT 162 052 R2A

Sony Ericsson

W950

Quick guide

## SIM card and battery



1. Remove the battery cover.
2. Insert the SIM card *under* the SIM ejector, with the contacts facing down. For removal instructions, see the User guide.
3. Insert the battery with the label side up and the connectors facing each other.
4. Slide the battery cover back into place.



5. Connect the charger, with the symbol on the charger plug facing upwards.
6. During charging the infrared port indicator is on. If the phone is on, the battery indicator shows that charging is in progress.
7. Wait about 2.5 hours for the battery to be fully charged.
8. Remove the charger from the phone by tilting the plug upwards.

## Getting started

### To turn on the phone

1. Press and hold the On/off button until you hear the welcome sound.
2. Select **Phone on**, or **Fight mode** where the use of mobile phones is prohibited.
3. Enter the PIN code provided with the SIM card if the **Enter PIN** dialog appears.



The first time you use your phone, a setup wizard will help you to enter the basic settings.

### To make a call

Using the keypad, enter the phone number and select **Call** on the screen, or press the Jog Dial (see below) inwards. You can also make a call from Contacts

## Navigation

To navigate menus and select items, use the Jog Dial and the Back button or tap the screen with your fingertips or the stylus.

### Jog Dial and Back button

Rotate the Jog Dial to scroll lists up and down, adjust sound volume or move through a multimedia message. Press the Jog Dial inwards to select a highlighted item.



Use the Back button when you, for example, want to back from one menu to another. A long press on the Back button locks the keypad.

### Stylus

Use the stylus to operate the touch-sensitive screen.

## Keypad

Your phone has a 12-key alphanumerical keypad and also a Walkman® key and a C (cancel) key.



When the Walkman® player, the Radio or the Video player is launched, symbols light up showing the new functions of the top three keys on the keypad.

## Text entry

There are three main options for entering text in your phone:

- **Keypad prediction** – allows entire words to be entered with a minimum of keystrokes. The more you write, the more assistance you will get.
- **Handwriting recognition** – using the stylus you can write directly on the screen.
- **On-screen keyboard** – launched from the status bar, which is always at the top of the screen. The keyboard icon is displayed when you open a text entry field.

If you want to change between keypad prediction and handwriting recognition, open the **More** menu and select **Text options > Change input mode**.

## Standby view

Standby view is displayed whenever you switch on your phone. It is the starting point for performing a variety of tasks and for accessing applications via the Main menu .

### Standby view overview

- A. Walkman® key – launch the Walkman® player.
- B. Today's information. Check your unread email, missed calls, tasks and upcoming appointments.
- C. Shortcuts bar.
- D. Touch options bar, including the More menu and various commands.



Standby view offers you an overview of the day's events and tasks (B). You can personalize this overview and select, for example, which headings to show. To explore the options available, select **Preferences** in the **More** menu.

Standby view also includes shortcuts to common applications (C). You can change these predefined shortcuts to quickly reach your most frequently used applications and links. Using the Jog Dial, navigate to the shortcut you want to change and select **Replace** in the **More** menu.

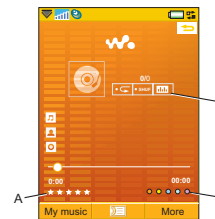
## Walkman® player

A press on the Walkman® key on the keypad opens the Walkman® player in play view. When the player is launched, symbols light up on the front, showing how the top three keys on the keypad are used to play and stop, and skip to the previous or next track.

The first time you open the Walkman®, player, select **More > Update music** to search the Phone memory and Media memory for sound files. This process may take a while if you have a lot of sound files.

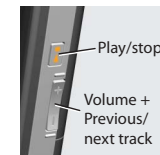
### Walkman® play view

- A. Rate your tracks.
- B. Categorize your tracks by assigning moods to them.
- C. Displays the equalizer.



Your Walkman® music files may be collected in a number of ways, including Internet download and file transfer from computer. When organizing the files you

can group them by album or artist, or arrange them in your own playlists.



A dedicated Play/stop button and a combined Volume and Previous/next track button on the side of the phone make it easy to operate the Walkman® player with

the phone still in your pocket. Optionally, you can use the remote control on the handsfree to control the player.

## Media memory

Apart from the ordinary Phone memory, your phone comes with an additional 4 GB Media memory, suitable for storing music, pictures, applications and documents. In Fast file transfer mode the storing of music goes quickly. Connect the phone to your computer using the supplied USB cable and a dialog is displayed where you can change mode.

Select **Tools > File manager** to access the various memory locations. The left tab displays the contents of the Phone memory, and the right tab the contents of the Media memory.

## Free Manuals Download Website

<http://myh66.com>

<http://usermanuals.us>

<http://www.somanuals.com>

<http://www.4manuals.cc>

<http://www.manual-lib.com>

<http://www.404manual.com>

<http://www.luxmanual.com>

<http://aubethermostatmanual.com>

Golf course search by state

<http://golfingnear.com>

Email search by domain

<http://emailbydomain.com>

Auto manuals search

<http://auto.somanuals.com>

TV manuals search

<http://tv.somanuals.com>