

**Wireless  
2.4GHz  
Keyboard &  
Mouse Combo**



Visit our Website at [www.targus.com](http://www.targus.com) Features and specifications subject to change without notice.  
© 2008 Targus Group International, Inc. and Targus, Inc.

AKM11US / 410-14-001A



**USER GUIDE**



PMS Black  
30%



PMS Black  
100%

# TARGUS WIRELESS 2.4 GHz KEYBOARD & MOUSE COMBO

## Introduction

Congratulations on your purchase of the Targus wireless 2.4 GHz keyboard and mouse combo. This keyboard/mouse combo utilizes the latest wireless technology to eliminate interference. Additionally, Free Smart Link technology provides a plug-n-play experience.

## Contents

- Targus Wireless Keyboard
- Targus Wireless Mouse
- USB Receiver
- 4 AAA Batteries (included)
- Software Driver CD
- User Guide

## System Requirements

### Hardware

- PC with an Intel® Pentium® processor or equivalent
- USB port

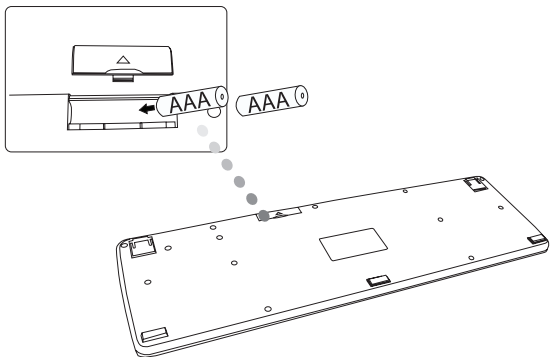
### Operating System

- Windows® 2000/XP
- Windows Vista™

# Installing the Batteries

## Wireless Keyboard

### Removing the battery cover

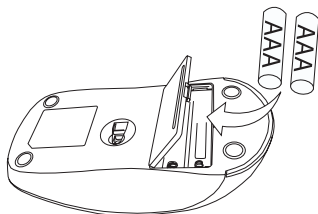


1 Remove the battery cover located on the bottom of the keyboard.

2 Insert the supplied batteries, making sure that the positive (+) and negative (-) ends of each battery match the polarity indicators inside the battery compartment.

## Optical Mouse

### Removing the battery cover



1 Insert the supplied batteries, making sure that the positive (+) and negative (-) ends of each battery match the polarity indicators inside the battery compartment.



WARNINGS: WHEN REPLACING THE BATTERIES, YOU MAY USE ALKALINE OR OTHER HEAVY-DUTY NIMH BATTERIES. NEVER COMBINE AN ALKALINE WITH A NIMH BATTERY IN A DEVICE. AVOID MIXING NEW AND USED BATTERIES IN A DEVICE.

2 Slide the battery cover back into position until it “clicks” firmly into place.

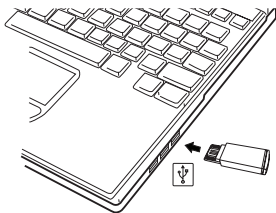
The optical sensor, located on the bottom of the mouse should glow red.



NOTE: THE MOUSE WILL OPERATE ON ONE BATTERY; USING TWO BATTERIES WILL DOUBLE THE USAGE TIME.

## Establishing a Communications Link

Plug the USB receiver into an available USB port on your computer.



- Press any key on the keyboard to connect.
- Move the mouse to automatically connect.



NOTE: IT IS RECOMMENDED TO KEEP THE DEVICE(S) AT A DISTANCE OF LESS THAN (6 FEET / 2 METERS) TO THE RECEIVER AT THE INITIAL CONNECTION.

## Installing the Software driver

The driver can be found on the CD-ROM (included)

or

Download the software driver (Model # AKM11) from the official Targus web site: <http://www.targus.com>

Save the setup file to your computer and double click on the icon to launch the installation process.



Autorun.exe

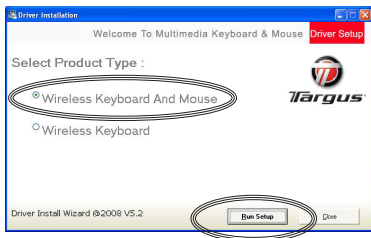


NOTE: THE DEVICE(S) CAN WORK WITHOUT INSTALLING THE SOFTWARE DRIVER; HOWEVER, NOT ALL FUNCTIONS WILL BE AVAILABLE.

The Installation Wizard window will prompt.

Follow the on-screen instructions to complete the installation.

Choose “Wireless Keyboard and Mouse” and click “Run Setup”



After the software driver is successfully installed, new icons will show in the taskbar.



Scroll LOCK - ON



CAP-LOCK - ON

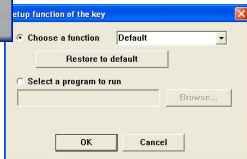
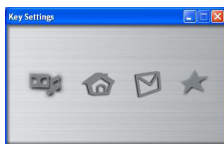


Number LOCK - ON

## Keyboard Setup



Double click on the “Keyboard Icon” to launch the key configuration screen



There are 4 programmable “Hot Keys”. Click on the icons to assign the new short-cut function.







Follow the on-screen instructions to setup the short-cut keys.

## Using the Hot keys









BY DEFAULT, THE HOT KEYS ARE PRESET AS FOLLOWS:

### Media keys

Key	Function
	Launch Default Media Program
	Mute
	Volume Up
	Volume Down
	Play / Pause
	Stop

### Internet and System keys

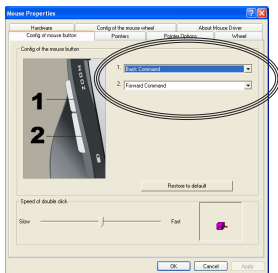
Key	Function
	Sleep
	Default Internet browser
	Default E-mail Program
	Favorite
	Calculator
	My Computer



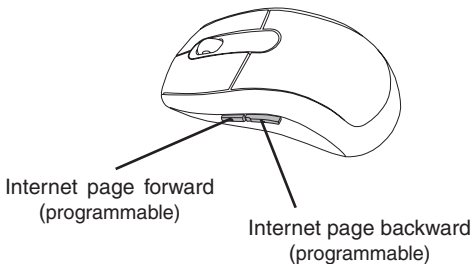
## Mouse Properties Setup



Double click on the “Mouse Icon” to launch the mouse configuration screen



The side mouse buttons are programmable. Select the desired pre-defined functions from the drop-down list and press Apply to confirm.



NOTE: BY DEFAULT, THE SIDE MOUSE BUTTONS ARE SET AS “INTERNET PAGE FORWARD” AND “INTERNET PAGE BACKWARD”.

## **Troubleshooting**

- Check the receiver connection; try inserting the receiver to another USB port on your computer.
- No connection between the device(s) and the receiver. Re-insert the receiver. Remove and reinstall batteries.

## Specifications

<b>Operation Frequency</b>	2.4 GHz
<b>Operating Distance</b>	Up to 10m
<b>Operating Voltage</b>	Keyboard: 3V Receiver: 5V Mouse: 1.5V
<b>Operating Current</b>	Keyboard: 3mA maximum Receiver: 30mA maximum Mouse: 25mA maximum
<b>Suspend Mode</b>	Keyboard: Below 300 uA Mouse: Below 1 mA
<b>Dimensions</b>	Keyboard: 470 x 147.5 x 22 mm Receiver: 42 x 14.5 x 7 mm Mouse: 123 x 66 x 39 mm
<b>Weight</b>	Keyboard: 70.4g Receiver: 1g Mouse: 75g

## Technical Support

For technical questions, please visit:

**US**

Internet: [www.targus.com/support.asp](http://www.targus.com/support.asp)

**Australia**

Internet: [www.targus.com/au](http://www.targus.com/au)

Email: [infoaust@targus.com](mailto:infoaust@targus.com)

Telephone: 1800-641-645

**New Zealand**

Telephone: 0800-633-222

## Product Registration

Targus recommends that you register your Targus accessory shortly after purchasing it. Go to:

<http://www.targus.com/registration.asp>.

You will need to provide your full name, email address, country of residence and product information.

## Warranty

Targus warrants this product to be free from defects in materials and workmanship for one year. If your Targus accessory is found to be defective within that time, we will promptly repair or replace it. This warranty does not cover accidental damage, wear and tear, or consequential or incidental loss. Under no conditions is Targus liable for loss of, or damage to devices; nor loss of, or damage to, programs, records, or data; nor any consequential or incidental damages, even if Targus has been informed of their possibility. This warranty does not affect your statutory rights.

## Regulatory Compliance

This device complies with Part 15 of the FCC Rules. Operation is subject to the following two conditions: (1) This device may not cause harmful interference, and (2) This device must accept any interference received, including interference that may cause undesired operation.

## **FCC Statement Tested to Comply**

This equipment has been tested and found to comply with the limits of a Class B digital device, pursuant to Part 15 of the FCC Rules. These limits are designed to provide reasonable protection against harmful interference in a residential installation. This equipment generates, uses, and can radiate radio frequency energy and if not installed and used in accordance with the instructions, may cause harmful interference to radio communications. However, there is no guarantee that interference will not occur in a particular installation. If this equipment does cause harmful interference to radio or television reception, which can be determined by turning the equipment off and on, the user is encouraged to try to correct the interference by one or more of the following measures:

- Reorient or relocate the receiving antenna;
- Increase the separation between the equipment and receiver;
- Connect the equipment into an outlet on a circuit different from that to which the receiver is connected;
- Consult the dealer or an experienced radio/TV technician for help.

Changes or modifications not authorized by the party responsible for compliance could void the user's authority to operate this product.

## **Declaration of Conformity**

Hereby, Targus, declares that this device is in compliance with the essential requirements and other relevant provisions of Directive 1999/5/EC.

Microsoft, Windows, and Windows Vista are either registered trademarks or trademarks of Microsoft Corporation in the United States and/or other countries. All trademarks and registered trademarks are the property of their respective owners. All rights reserved. Features and specifications are subject to change without notice. © 2008. Targus Group International, Inc. and Targus, Inc., Anaheim, CA 92806 USA

## Free Manuals Download Website

<http://myh66.com>

<http://usermanuals.us>

<http://www.somanuals.com>

<http://www.4manuals.cc>

<http://www.manual-lib.com>

<http://www.404manual.com>

<http://www.luxmanual.com>

<http://aubethermostatmanual.com>

Golf course search by state

<http://golfingnear.com>

Email search by domain

<http://emailbydomain.com>

Auto manuals search

<http://auto.somanuals.com>

TV manuals search

<http://tv.somanuals.com>