

**Bluetooth® Laser  
Rechargeable  
Notebook Mouse**  **Targus®**



Visit our Website at [www.targus.com](http://www.targus.com)  
Features and specifications subject to  
change without notice. © 2007 Targus  
Group International, Inc. and Targus, Inc.

**Bluetooth Qualified Product**



ID# B03158

AMB03US / 410-0465-001B



**USER GUIDE**

 PMS Black  
30%

 PMS Black  
100%

---

# TABLE OF CONTENTS

---

System requirements.....	3
Installing the Batteries.....	3
Using the Enhanced Resolution feature.....	5
Bluetooth Software: WIDCOMM.....	5
Bluetooth Software: TOSHIBA.....	10
Bluetooth Software: MICROSOFT.....	15
Bluetooth Software: Mac OS X.....	19
Technical Support.....	25



# CAUTION

**LASER RADIATION. DO NOT STARE INTO THE BEAM OR VIEW DIRECTLY WITH OPTICAL INSTRUMENTS. CLASS I LASER PRODUCT.**

**NEVER POINT A LASER BEAM INTO A PERSON'S EYES OR VIEW A LASER BEAM DIRECTLY, AS PROLONGED EXPOSURE CAN BE HAZARDOUS TO THE EYES.**

**MOMENTARY EXPOSURE FROM A LASER POINTER, SUCH AS AN INADVERTENT SWEEP OF THE LIGHT ACROSS A PERSON'S EYES, MAY CAUSE TEMPORARY FLASH BLINDNESS SIMILAR TO THE EFFECT OF A CAMERA FLASH BULB. ALTHOUGH THIS CONDITION IS TEMPORARY, IT CAN BECOME MORE DANGEROUS IF THE EXPOSED PERSON IS ENGAGED IN A VISION-CRITICAL ACTIVITY SUCH AS DRIVING.**

# **TARGUS BLUETOOTH® LASER RECHARGEABLE NOTEBOOK MOUSE**

## **Introduction**

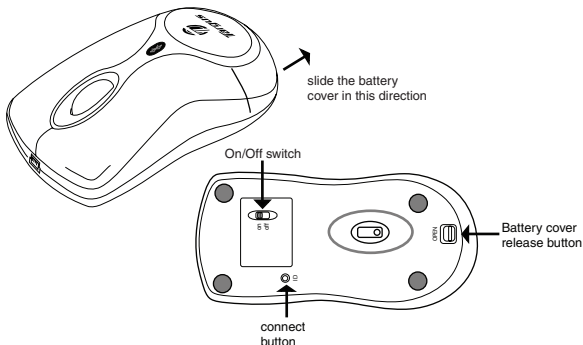
Congratulations on your purchase of the Targus Bluetooth® Laser Rechargeable Notebook Mouse. This mouse has a special EDR (Enhanced Data Rate) technology that provides faster data transmission rate and allows multiple Bluetooth devices running without conflict.

## **System Requirements**

Hardware - Bluetooth-enabled notebook or desktop PC  
Operating System - Windows® 98SE / 2000 / ME / XP  
Windows Vista™  
Mac OS X (10.x or greater)

## **Installing the Batteries (Supplied)**

- Use the two AAA-size rechargeable NIMH batteries (supplied)
- Remove the battery cover from the back of the mouse by sliding off the cover while pressing the release button at the bottom of the mouse.
- Insert the batteries, making sure that the positive (+) and negative (-) ends of each battery match the polarity indicators inside the battery housing



**WARNINGS:** WHEN REPLACING THE BATTERIES, ALWAYS REPLACE WITH NiMH BATTERIES OR OTHER RECHARGEABLE BATTERIES. NEVER USE ALKALINE BATTERIES IN THIS DEVICE. AVOID MIXING NEW AND USED BATTERIES IN A DEVICE

- Snap the battery cover back into position
- Turn on the mouse by sliding on/off switch on the bottom to the “on” position.



**NOTE:** WHILE THE MOUSE IS FUNCTIONING, NO LASER LIGHT IS VISIBLE TO THE NAKED EYE. BE CAREFUL NOT TO LOOK DIRECTLY INTO THE EMITTER HOLE WHILE THE MOUSE IS ACTIVE.

To determine if the laser mouse is on and functioning is by moving the mouse to see if the cursor is moving. The mouse should be paired with the computer before it operates. The scroll wheel will light up for approximately 1 sec. when the power is turned on.

## Charging the Batteries

- Charge the mouse for 8 hours before using. Plug in the USB charge cable to the mouse and connect the other end to the computer.

1. Charge the mouse for at least 8 hours before using it. And please make sure only rechargeable batteries (the ones that come with your product) are used.
2. Your computer needs to stay powered on for the mouse to charge. Follow these steps to prevent your computer from going in to Standby or Hibernate:
  - a) Click "Start"
  - b) Click "Control Panel"
  - c) Click "Performance and Maintenance" (Skip in Classic View)
  - d) Click "Power Options"
  - e) Make sure "System Standby:" and "System Hibernates:" under "Plugged in" are set to "Never"



3. If you use your notebook computer's LCD monitor, please do not close the lid. (Please ignore this step if you use an external monitor with your notebook lid closed.)
4. If your mouse does not respond after a period of inactivity, please wake it up by pressing one of the buttons on the mouse or moving the mouse around.



NOTE: TO CONTINUOUSLY CHARGE THE BATTERIES VIA THE USB CHARGE CABLE, YOUR COMPUTER MUST BE ON AND AWAKE . FOR BEST RESULTS , TURN OFF YOUR COMPUTER 'S POWER MANAGEMENT / SLEEP MODE FEATURE WHILE CHARGING THE MOUSE.

## Initial Configuration

Before you can begin using Bluetooth connectivity on your computer and other Bluetooth devices, you must perform some initial setup tasks.

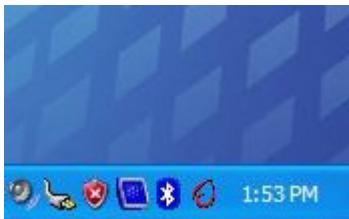
The Targus Bluetooth Laser Rechargeable notebook mouse is designed to work with the four major software stack (protocol) standards: WIDCOMM, Toshiba, Microsoft and Mac OS X. Please check your computer's documentation to see which software stack your computer has. Please contact your system vendor if your system does not support one of the following Bluetooth software standards.

## Using the enhanced Resolution feature

This bluetooth laser mouse has a special enhanced resolution feature. By activating this feature, the laser mouse will increase its tracking sensitivity from 800 CPI to 1600 CPI. This will improve the precision of the mouse pointer for fine details with increased speed. Press both the scroll and right key when the mouse is on , the red LED in the scroll wheel will light up around 3 secs to proceed resolution switching. When the LED is off, it indicates the resolution switching is successful.

## Bluetooth Software: WIDCOMM

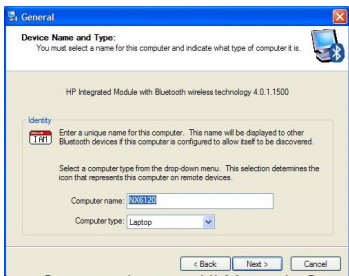
1. Go to the Bluetooth Places icon located on your desktop or in the system tray and double click, then click Bluetooth setup wizard.



2. The Bluetooth configuration screen will prompt. Please follow the onscreen instructions. Click **Next** to continue.



3. Continue to setup your bluetooth device profile.

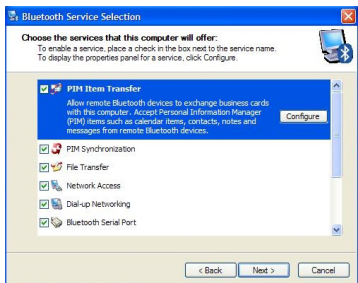




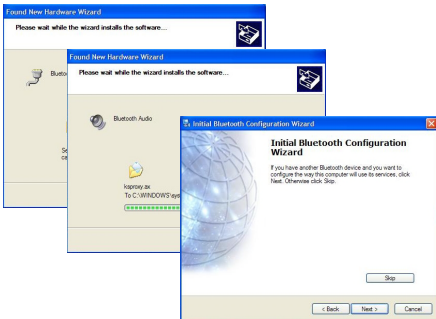
4. Click **Next** to continue setup.



5. Please select the service which the bluetooth device offers. (Default setting allows the most coverage. It is recommend to keep as default). Click **Next**.



6. Installation will perform setup and click **Next** when setup is completed.

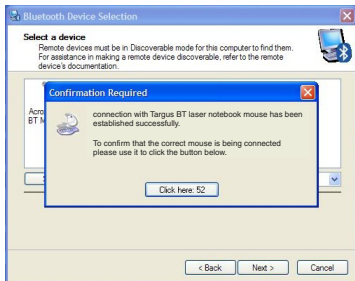


7. Please turn on the mouse and press the connection ID button located at the bottom of the mouse until the light in the middle scroll wheel blinks red light (discoverable mode). Click **Next** to continue pairing.



8. The confirmation window will appear as the system installs the drivers. Click **OK**. When this is done, the mouse should be functioning. The bluetooth mouse has been successfully installed.

(There may be one or more different bluetooth device detected.) If the mouse is not detected, please make sure the power is on and in discoverable mode. Press **Search Again** to re-pair the device.



9. Once the pairing search is complete, the bluetooth mouse icon should appear on the screen as shown. Setup is complete. You may choose to close the window, or continue pairing other bluetooth devices.



# Bluetooth Software: TOSHIBA

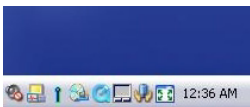
## How to check your version of the Toshiba Bluetooth Stack

1. Launch the Bluetooth Manager.
2. Select the *Help* menu.
3. Select *About*.



NOTE: TO ENSURE OPTIMAL PERFORMANCE OF YOUR BLUETOOTH PRODUCT YOU NEED TOSHIBA BLUETOOTH STACK V3.20.00 OR HIGHER. IF YOU HAVE A DIFFERENT VERSION PLEASE UPDATE IT FROM [WWW.SUPPORT.TOSHIBA.COM](http://WWW.SUPPORT.TOSHIBA.COM)

1. Double click on the Bluetooth Manager icon in the system tray, and then click “New Connection.”



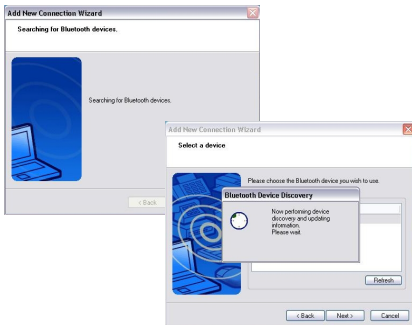
2. When follow window appears, click “New Connection” to begin setup.



3. Please turn on the mouse and press the connection ID button located at the bottom of the mouse until the light in the middle scroller wheel blinks red light (discoverable mode). Click **Next** to continue pairing.



4. The computer will now search for the bluetooth mouse and other bluetooth devices. Please wait until the search is completed.



5. Please choose the device you wish to connect. There maybe more then one bluetooth device detected. Select Targus bluetooth mouse and click **Next** to continue. If the mouse is not detected, please make sure the mouse is in discoverable mode and click **Refresh**.



6. The computer will begin connecting with the mouse. If an authentication is required, a dialogue will appear. The mouse does not require a passkey (PIN code).



7. Please follow the on-screen instructions to continue setting up your bluetooth mouse. Click **OK**.



8. You may want to create a connection name or change icon for the device. Once completed, press **Next** to finalize setup.



9. The connection is established and setup is complete. The mouse is ready to use. If the connection is not successful, please click **Back** and search the device again. Click **Finish** to exit setup.



10. The following screen should show the newly added mouse connection. You may want to continue to add other bluetooth device or close the window.





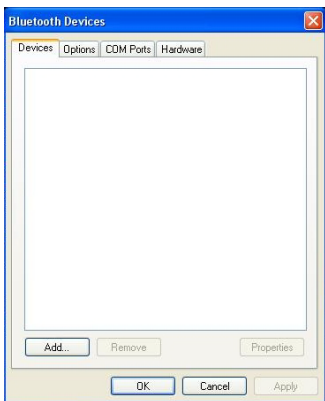
## Bluetooth Software: MICROSOFT

Make sure the Bluetooth radio is turned on. If necessary, check your computer's manual to determine if the radio is activated. To add the Targus mouse, proceed with the following steps:

1. Double click on the Bluetooth Manager icon in the system tray.



2. This window should appear. Click Add to launch the bluetooth device wizard.



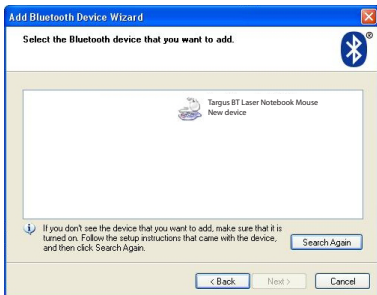
3. Please turn on the mouse and press the connection ID button located at the bottom of the mouse until the light in the middle scroller wheel blinks red light (discoverable mode). Check the box “my device is set up and ready to be found” then click **Next** to continue.



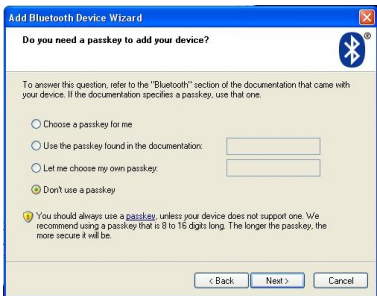
4. The computer will now search for the bluetooth mouse.



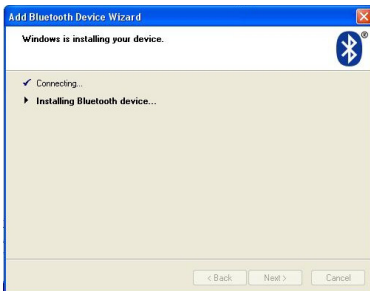
5. Please choose the device you wish to connect. There maybe more then one bluetooth device detected. Select Targus bluetooth mouse and click **Next** to continue. If the mouse is not detected, please make sure the mouse is in discoverable mode and click **search again**.



6. The mouse does not require a passkey (PIN code). Please check the “don't use a passkey” circle and click Next to continue.



7. Windows will begin connecting with the bluetooth mouse. Please wait until this process is complete.

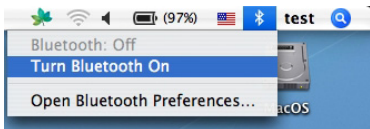


8. The setup is complete. Click **Finish** to exit setup.

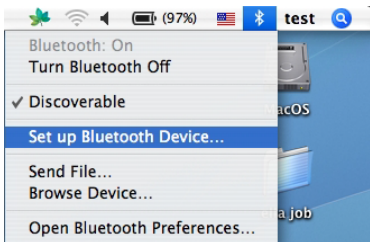


# Bluetooth Software: Mac

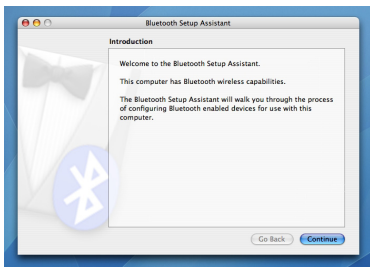
1. Go to the Bluetooth icon located on your desktop or in the system bar and click the icon to begin setup. Select “Turn Bluetooth On” to enable the device.



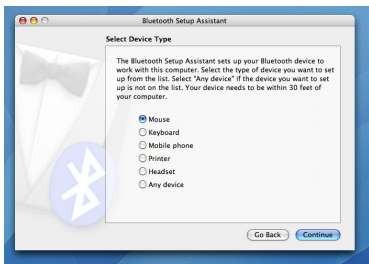
2. Scroll down the list to “Set up Bluetooth Device...” and select the option.



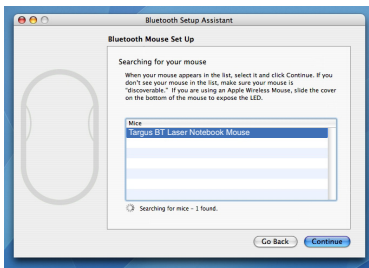
3. Bluetooth Setup Assistant will begin. Please follow the on-screen instructions.



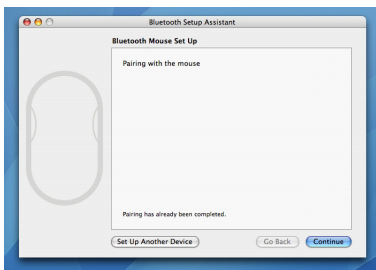
4. Please select “mouse” and click **continue** to proceed with setup. Please make sure your mouse is in “discoverable” mode. To enable “discoverable” mode, turn on the mouse and press the connection ID button located at the bottom of the device until the light in the middle scroll wheel blinks red light.



5. Your computer will begin to search for the mouse. Once the mouse is found, it will show up in the list. Highlight the mouse in the list you wish to connect and press **continue** to proceed with setup.



6. The bluetooth mouse will now begin pairing. Click **continue** to proceed.



7. Congratulations. Your bluetooth mouse is setup and is ready to use. You can choose to setup another device or click **Quit** to exit setup.



## Operating Hints

- Avoid using the mouse on a metal surface. Metals, such as iron, aluminum or copper, shield the radio frequency transmission and may slow down the mouse response time or cause the mouse to fail temporarily.
- The mouse will enter a suspend mode at the same time your computer does. To activate the mouse, press any mouse button, or simply move the mouse. Please note that it will take about 2 seconds to wake up.
- If your computer has a metal case that contains aluminum or magnesium, use the mouse to the side. The display panel may interfere with the radio frequency signal if you use the mouse directly in front of the display.
- The best way to tell whether a laser mouse is on and functioning is by moving the mouse to see if the cursor is moving. This product will not work until you paired up the mouse with the bluetooth.
- The scroll wheel will light up (red) for approximately 1 sec. when the power is turned on.



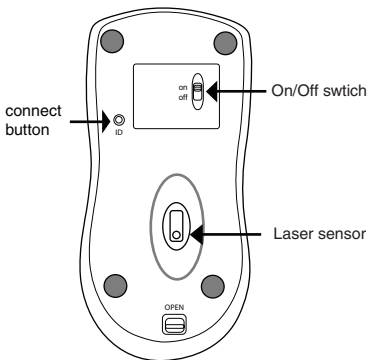
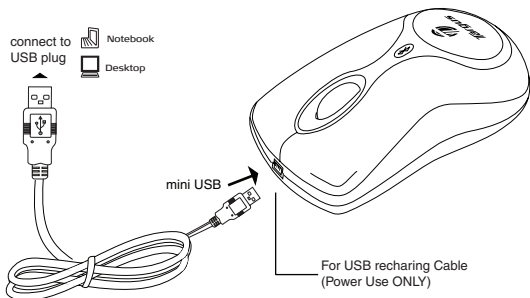
NOTE: WHILE THE MOUSE IS FUNCTIONING, NO LASER LIGHT IS VISIBLE TO THE NAKED EYE. BE CAREFUL NOT TO LOOK DIRECTLY INTO THE EMITTER HOLE WHILE THE MOUSE IS ACTIVE.

## Mouse Power Management

- To power the mouse on and off, slide the on/off switch at the bottom of the mouse to the desired position.
- During the operation, the Power Saving feature allows the mouse to go into “sleep mode” after 5 minutes of inactivity. Click any mouse button or move the mouse for about 2 seconds to re-activate the mouse.
- To save battery power, turn off the mouse while traveling or while not in use.



- Scroller Wheel will glow when the power is low. To recharge the mouse, plug in the USB Recharging Cable to the mouse, and plug the USB tip to the computer. The mouse is operational while charging.



## Safety Measures

- To avoid possible eye damage, never point the mouse's laser at people, especially their faces, or look directly into the mouse's laser beam.
- Avoid pointing the mouse's laser beam at a mirror or other highly reflective surface.
- Keep the mouse away from young children.
- Never view the mouse's laser beam using telescopic devices, such as a microscope or binoculars.
- Any attempt to disassemble, adjust or repair the presenter may result in exposure to laser light or other safety hazards.
- This is a Class I Laser Product.

## Troubleshooting

### The mouse is not working.

- Make sure that the polarity of the batteries is correct. The positive (+) and negative (-) ends of each battery must match the positive (+) and negative (-) connections in the battery housing.
- Make sure the batteries are charged.
- Verify that the computer is Bluetooth enabled.
- Verify that the device drivers are installed:

1. Click **Start/ Settings/ Control Panel/ System/ Hardware/ Device Manager**
2. Check under "Bluetooth Devices" that a "Targus Bluetooth Laser Notebook Mouse" is installed

- Paired devices are always displayed in My Bluetooth Places, even if the mouse is out of range or not powered up.
- Verify that the remote member of the pair is within range, and powered up, and then attempt the connection again.
- Verify that batteries are properly installed. Recharge / Replace if necessary.

## Technical Support

For technical questions, please visit:

Internet: <http://www.targus.com/support.asp>

## Product Registration

Targus recommends that you register your Targus accessory shortly after purchasing it. To register your Targus accessory, go to: <http://www.targus.com/registration.asp>

You will need to provide your full name, email address, phone number, and company information (if applicable).

## Warranty

Targus warrants this product to be free from defects in materials and workmanship for one year. If your Targus accessory is found to be defective within that time, we will promptly repair or replace it. This warranty does not cover accidental damage, wear and tear, or consequential or incidental loss. Under no conditions is Targus liable for loss of, or damage to a computer; nor loss of, or damage to, programs, records, or data; nor any consequential or incidental damages, even if Targus has been informed of their possibility. This warranty does not affect your statutory rights.

## Regulatory Compliance

This device complies with Part 15 of the FCC Rules. Operation is subject to the following two conditions: (1) This device may not cause harmful interference, and (2) This device must accept any interference received, including interference that may cause undesired operation.

## FCC Statement Tested to Comply

This equipment has been tested and found to comply with the limits of a Class B digital device, pursuant to Part 15 of the FCC Rules. These limits are designed to provide reasonable protection against harmful interference in a residential installation. This equipment generates, uses, and can radiate radio frequency energy and if not installed and used in accordance with the instructions, may cause harmful interference to radio communications. However, there is no guarantee that interference will not occur in a particular installation. If this equipment does cause harmful interference to radio or television reception, which can be determined by turning the equipment off and on, the user is encouraged to try to correct the interference by one or more of the following measures:

- Reorient or relocate the receiving antenna
- Increase the separation between the equipment and receiver
- Connect the equipment into an outlet on a circuit different from that to which the receiver is connected
- Consult the dealer or an experienced radio/TV technician for help

Changes or modifications not authorized by the party responsible for compliance could void the user's authority to operate this product

## Declaration of Conformity

Hereby, Targus Group International, declares that this Bluetooth Media Notebook Mouse is in compliance with essential requirements and other relevant provisions of Directive 1999/5/EC

Features and specifications are subject to change without notice. All trademarks and registered trademarks are the property of their respective owners. © 2007, Targus Group International, Inc. and Targus, Inc.

WIDCOMM and the WIDCOMM logo are trademarks of WIDCOMM, Inc. Bluetooth and the Bluetooth logo are trademarks owned by Bluetooth SIG, Inc., U.S.A. and licensed to WIDCOMM, Inc.

Microsoft, Windows, Windows Vista and Outlook are registered trademarks of Microsoft Corporation. All other trademarks and registered trademarks are the property of their respective owners.

## Free Manuals Download Website

<http://myh66.com>

<http://usermanuals.us>

<http://www.somanuals.com>

<http://www.4manuals.cc>

<http://www.manual-lib.com>

<http://www.404manual.com>

<http://www.luxmanual.com>

<http://aubethermostatmanual.com>

Golf course search by state

<http://golfingnear.com>

Email search by domain

<http://emailbydomain.com>

Auto manuals search

<http://auto.somanuals.com>

TV manuals search

<http://tv.somanuals.com>