

Targus®

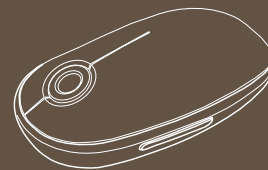


www.targus.com/us/forMac

©2008 Manufactured or imported by Targus Group International, Inc. (for U.S. sales: 1211 North Miller Street, Anaheim, CA 92806 USA, for Australia sales: Targus Australia Pty. Ltd., 117-119 Bowden Street, Meadowbank, NSW 2114 Australia). All rights reserved. Targus is either a registered trademark or trademark of Targus Group International, Inc. in the United States and/or other countries. Features and specifications are subject to change without notice. Mac, the Mac logo, Mac OS, Safari and iTunes are trademarks of Apple Inc., registered in the U.S. and other countries. The Bluetooth word mark and logos are owned by the Bluetooth SIG, Inc. and any use of such marks by Targus is under license. All trademarks and registered trademarks are the property of their respective owners. This product and its various features are protected under patents US7298362, TW249131, CNZL03275852.9, JP3132101, DE202007005619.2, CNZL200620131443.5, JP3232194, DE202007004256.6, DE202007006210.9. Other United States and foreign patents pending.

ONE YEAR LIMITED WARRANTY

Targus®



USER GUIDE

Bluetooth® Laser Mouse

for Mac®



CAUTION

LASER RADIATION. DO NOT STARE INTO THE BEAM OR VIEW DIRECTLY WITH OPTICAL INSTRUMENTS. CLASS I LASER PRODUCT.

NEVER POINT A LASER BEAM INTO A PERSON'S EYES OR VIEW A LASER BEAM DIRECTLY, AS PROLONGED EXPOSURE CAN BE HAZARDOUS TO THE EYES.

MOMENTARY EXPOSURE FROM A LASER POINTER, SUCH AS AN INADVERTENT SWEEP OF THE LIGHT ACROSS A PERSON'S EYES, MAY CAUSE TEMPORARY FLASH BLINDNESS SIMILAR TO THE EFFECT OF A CAMERA FLASH BULB. ALTHOUGH THIS CONDITION IS TEMPORARY, IT CAN BECOME MORE DANGEROUS IF THE EXPOSED PERSON IS ENGAGED IN A VISION-CRITICAL ACTIVITY SUCH AS DRIVING.

Targus Bluetooth® Laser Mouse

Introduction

Congratulations on your purchase of the Targus Bluetooth Laser Mouse. This mouse uses Bluetooth wireless technology which provides a seamless connection up to 33 ft (10 m) away.

System Requirements

Hardware

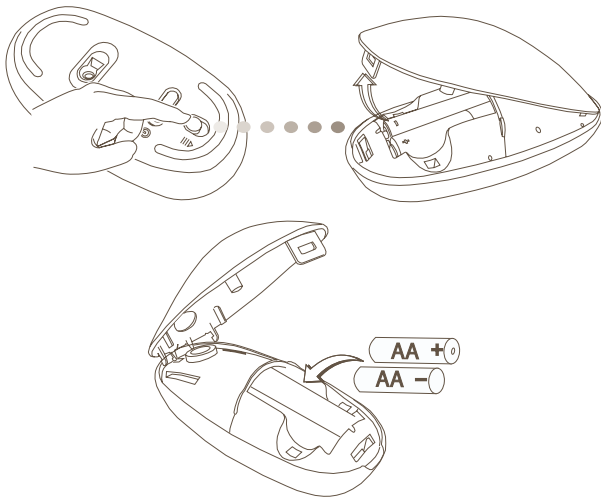
- Bluetooth-enabled notebook or desktop computer

Operating System

- Mac OS® X 10.4 or later

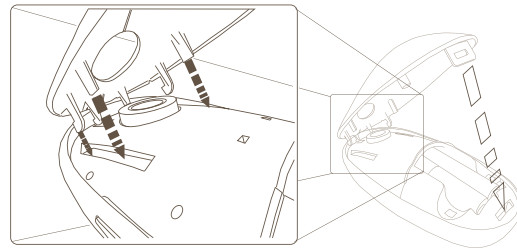
Installing the Batteries

- Please use the two AA batteries that are included.
- Remove the battery cover by sliding the release button on the bottom of the mouse. Once the battery cover releases, simply lift it up from the back of the mouse.

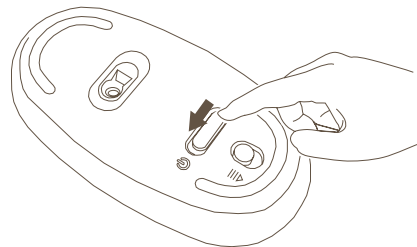


- Insert the batteries, making sure that the positive (+) and negative (-) ends of each battery match the polarity indicators inside the battery compartment.

- Once the batteries are installed. Close the battery compartment by first re-inserting the front of the cover and then pressing down the back until it locks into position.



- Turn on the mouse by sliding the on/off switch on the bottom to the “on” position.



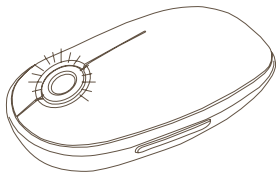
Low Battery Power Indicator



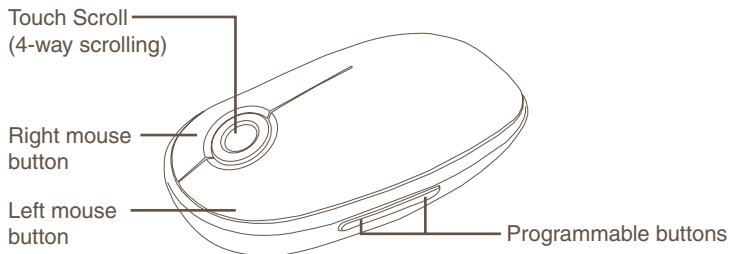
NOTE: WHEN THE BATTERY POWER IS LOW, THE TOUCH SCROLL WILL FLASH RED. PLEASE REPLACE THE BATTERIES.

When 60 minutes of power remains, a red indicator light will glow for 8 seconds.

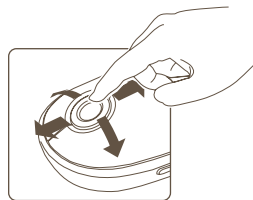
When only 30 minutes of power remains, the red indicator light will blink continuously.



Using the Mouse



Using the Touch Scroll



- Slide your finger over the Touch Scroll sensing area to use the 4-way scrolling function.
- Quickly slide your finger (either up or down) over the Touch Scroll to activate the quick scrolling function.
- Press any button to disable the quick scrolling function.



NOTE: PLEASE REMOVE THE PROTECTIVE PLASTIC FILM ON THE TOUCH SCROLL BEFORE USING THE DEVICE.

Initial Configuration

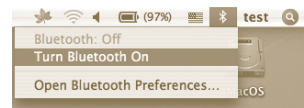
Before you can begin using your Bluetooth mouse, you will first need to perform some initial setup steps.



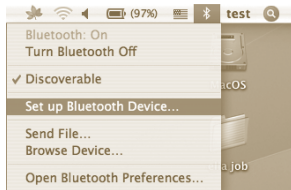
NOTE: PLEASE USE THE LATEST BLUETOOTH DEVICE DRIVER. INSTRUCTION SCREENS MIGHT VARY DEPENDING ON THE VERSION OF YOUR BLUETOOTH DEVICE DRIVER.

Bluetooth Software: Mac

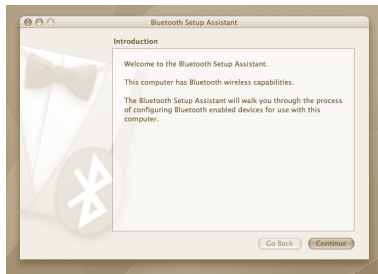
1. Go to the Bluetooth icon located on your desktop or in the system bar and click the icon to begin setup. Select "Turn Bluetooth On" to activate the Bluetooth function on your Mac.



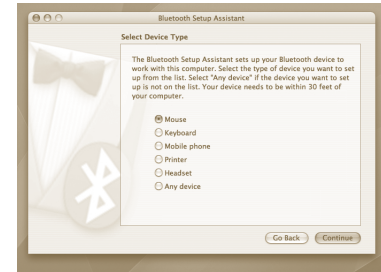
2. Scroll down the list and select “Set up Bluetooth Device...”



3. The Bluetooth Setup Assistant will begin. Please follow the on-screen instructions.



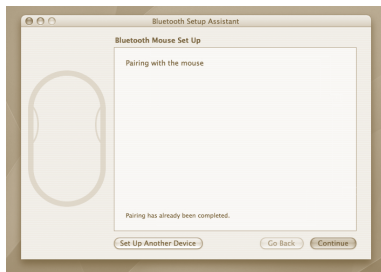
4. Select “mouse” and click continue to proceed with setup. Your mouse will need to be in “discovery” mode to connect. To enable “discovery” mode, turn on the mouse and after 3 seconds press any button on the mouse to enter into discovery mode.



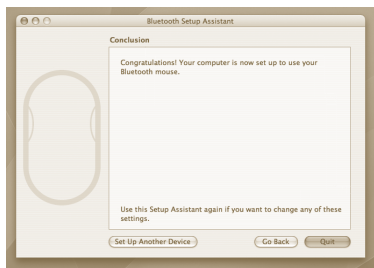
5. Your computer will begin to search for the mouse. Once the mouse is found, it will show up in the list. Highlight your mouse and press continue.



6. The Bluetooth mouse will now begin pairing. Click **continue** to proceed.



7. Congratulations. Your Bluetooth mouse is setup and ready to use. You can choose to setup another device or click **Quit** to exit setup.



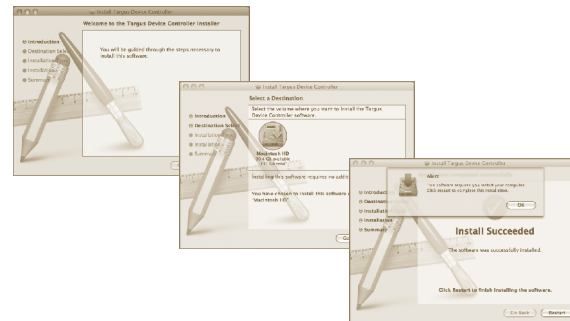
Installing Software for Programmable Buttons

Installing the software enables configuration of the programmable buttons. The latest software (Model # AMB08) can be downloaded from the official Targus web site: <http://www.targus.com>

Double click the setup icon to launch the installation software.



Follow the on-screen instructions to complete the installation.



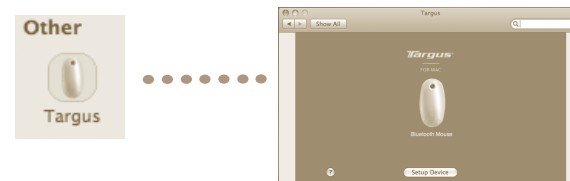
After the software is successfully installed, restart your computer to finish installing the software.

A Targus icon will appear in the System Preferences window.

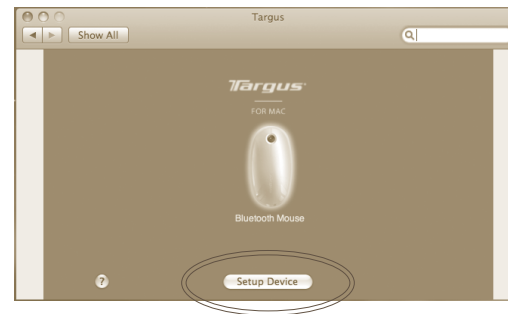


Programming the Buttons

Click on the Targus logo to launch the device application.



Click to highlight the image of the device and then press "Setup Device" to launch the configuration software.



Click the arrows on the right-side of the drop down lists to configure each button.



Each button can be programmed to any of the following types of functions:

Default Action	Set the buttons to a specific function.
Run AppleScript	Set the buttons to load an AppleScript
Launch Application	Set the buttons to launch specific application installed in the computer.
Perform key strokes	Set the button to recall key strokes.
Predefined functions	Set the button to map pre-set actions

Close the application window to apply the changes.

Troubleshooting

The mouse is not working.

- Make sure the batteries are installed correctly. The positive (+) and negative (-) ends of each battery must match the positive (+) and negative (-) connections in the battery compartment.
- Make sure the batteries are charged. Replace if necessary.
- Verify that the computer is Bluetooth enabled.
- Verify that the device drivers are installed:
 1. Click "**Apple Logo --> System Preference --> Hardware --> Bluetooth**"
 2. Check under "Bluetooth Devices" that a "Targus Bluetooth Laser Mouse" is installed.
- Paired devices are always displayed in "Bluetooth" windows, even if the mouse is out of range or not powered up.

Technical Support

For technical questions, please visit:

US	Internet: www.targus.com/support.asp
Australia	Internet: www.targus.com/au Email: infoaust@targus.com Telephone: 1800-641-645
New Zealand	Telephone: 0800-633-222

Product Registration

Targus recommends that you register your Targus accessory shortly after purchasing it. To register your Targus accessory, go to:

<http://www.targus.com/registration.asp>

You will need to provide your full name, email address, country of residence and product information.

Warranty

Targus warrants this product to be free from defects in materials and workmanship for one year. If your Targus accessory is found to be defective within that time, we will promptly repair or replace it. This warranty does not cover accidental damage, wear and tear, or consequential or incidental loss. Under no conditions is Targus liable for loss of, or damage to, a computer or other device(s); nor loss of, or damage to, programs, records, or data; nor any consequential or incidental damages, even if Targus has been informed of their possibility. This warranty does not affect your statutory rights.

Regulatory Compliance

This device complies with Part 15 of the FCC Rules. Operation is subject to the following two conditions: (1) This device may not cause harmful interference, and (2) This device must accept any interference received, including interference that may cause undesired operation.

FCC Statement Tested to Comply

This equipment has been tested and found to comply with the limits of a Class B digital device, pursuant to Part 15 of the FCC Rules. These limits are designed to provide reasonable protection against harmful interference in a residential installation. This equipment generates, uses, and can radiate radio frequency energy and if not installed and used in accordance with the instructions, may cause harmful interference to radio communications. However, there is no guarantee that interference will not occur in a particular installation. If this equipment does cause harmful interference to radio or television reception, which can be determined by turning the equipment off and on, the user is encouraged to try to correct the interference by one or more of the following measures:

- Reorient or relocate the receiving antenna;
- Increase the separation between the equipment and receiver;
- Connect the equipment into an outlet on a circuit different from that to which the receiver is connected;
- Consult the dealer or an experienced radio/TV technician for help

Changes or modifications not authorized by the party responsible for compliance could void the user's authority to operate this product.

Declaration of Conformity

Hereby, Targus, declares that this device is in compliance with the essential requirements and other relevant provisions of Directive 1999/5/EC.

Free Manuals Download Website

<http://myh66.com>

<http://usermanuals.us>

<http://www.somanuals.com>

<http://www.4manuals.cc>

<http://www.manual-lib.com>

<http://www.404manual.com>

<http://www.luxmanual.com>

<http://aubethermostatmanual.com>

Golf course search by state

<http://golfingnear.com>

Email search by domain

<http://emailbydomain.com>

Auto manuals search

<http://auto.somanuals.com>

TV manuals search

<http://tv.somanuals.com>