

Stowaway™ Portable Keyboard for Compaq iPAQ™ Pocket PC



USER'S GUIDE

The Leading Global Supplier of Portable Solutions

Contents

The Targus Stowaway Portable Keyboard.....	1
Setting Up Your Stowaway.....	2
Installing the Stowaway Portable Keyboard Software	2
Removing the Stowaway Portable Keyboard Software	4
Setting Up the Stowaway Portable Keyboard	5
Closing the Stowaway Portable Keyboard	9
Using Your Stowaway Portable Keyboard	11
Starting the Keyboard Software	11
Things to Remember	14
Customizing Your Stowaway Portable Keyboard Features.....	15
Troubleshooting	24
Frequently Asked Questions.....	24
Warranty	26
Technical Support	26
Regulatory Compliance.....	27
FCC Statement.....	28

The Targus Stowaway Portable Keyboard

The Stowaway™ Portable Keyboard is a convenient solution for typing data and commands into your Compaq iPAQ™ Pocket PC. This compact, fully functional keyboard:

- Enables you to type text and special characters into your iPAQ quickly and easily
- Lets you instantly launch your favorite applications with simple key commands
- Folds down to a convenient pocket size for traveling



Stowaway Portable Keyboard and Compaq iPAQ Pocket PC

In addition to this user's guide, this package contains:

- Targus Stowaway Portable Keyboard
- Targus Stowaway Software
- Right angle power connector dongle

Setting Up Your Stowaway

Installing the Stowaway Portable Keyboard Software

Follow these instructions to install the Stowaway keyboard software on your Compaq iPAQ Pocket PC.

Before installing the software, make sure that:

- You save all open documents.
- ActiveSync is installed and active on your PC.
- Your iPAQ has at least 80 KB free memory.



NOTE: To check the amount of free memory, tap **Start** and select **Settings**. Tap the **System** tab, then **Memory**.

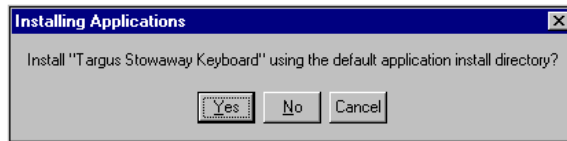
To Load the Stowaway Portable Keyboard Application in Windows®:

- 1 Insert the iPAQ into your synchronizing cradle and back up your files.



CAUTION: If your iPAQ is synchronizing files, wait for synchronization to complete before beginning the Stowaway keyboard setup.

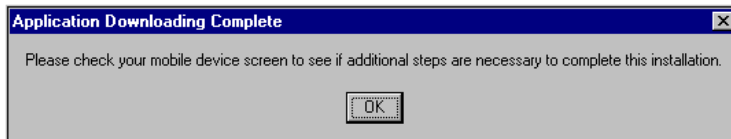
- 2 Insert the Stowaway keyboard software CD into your computer's CD-ROM drive.
Setup begins automatically.
- 3 If setup does not begin automatically, open Windows Explorer and double-click the CD-ROM icon. Then double-click the `setup.exe` file to run the installation program.



Installing Applications screen

- 4 When Microsoft ActiveSync displays the message "Install 'Targus Stowaway Keyboard' using the default application install directory?," click Yes.

The application files are then sent to your iPAQ.



Application Downloading Complete screen

- 5 When the Application Downloading Complete screen appears, click OK.
The Stowaway keyboard software is then copied to your iPAQ.

To complete the installation, follow the on-screen instructions on your iPAQ.

To verify that installation is complete on your iPAQ, tap **Start**. Stowaway is now visible in the Start menu.

Removing the Stowaway Portable Keyboard Software

If necessary, you can remove the Stowaway keyboard software from your iPAQ:

- 1 Tap **Start**, then select **Settings**.
- 2 Tap on the **System** tab and then **Remove Programs**.

The Stowaway keyboard is listed in the Programs in Storage Memory list.

- 3 Tap **Targus Stowaway**, then tap **Remove**.

A dialog box appears.

- 4 Tap **Yes** to remove the keyboard software, or **No** to cancel the operation.

To use the keyboard again, you must reinstall the Stowaway Portable Keyboard software. For more information, see “Installing the Stowaway Portable Keyboard Software” on page 2.

Setting Up the Stowaway Portable Keyboard



NOTE: You must install the Stowaway keyboard software before you can begin using the keyboard. For more information, see "Installing the Stowaway Portable Keyboard Software" on page 2.

Opening the Keyboard

- 1 Hold the unit in both hands and, using your thumb, push the latch down to unlock the case.



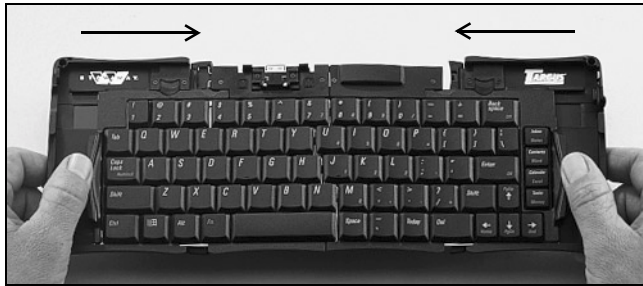
Stowaway keyboard closed

- 2 Unfold the keyboard and set it on a firm, flat surface.



Unfolding the Stowaway keyboard

- 3 Slide the red end-grips inward, bringing the keyboard sections together.



Sliding the Stowaway keyboard ends together

Attaching Your iPAQ

- 1 Slide the docking mechanism, located at the top of the keyboard, all the way out of the keyboard until the PDA foot flips up.

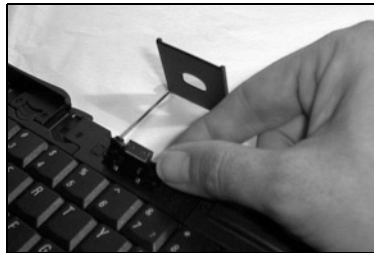


NOTE: If the PDA foot does not flip up, check that the docking mechanism is fully extended.



Extending the docking mechanism and PDA foot

- 2 Lift the docking connector until it clicks into place.



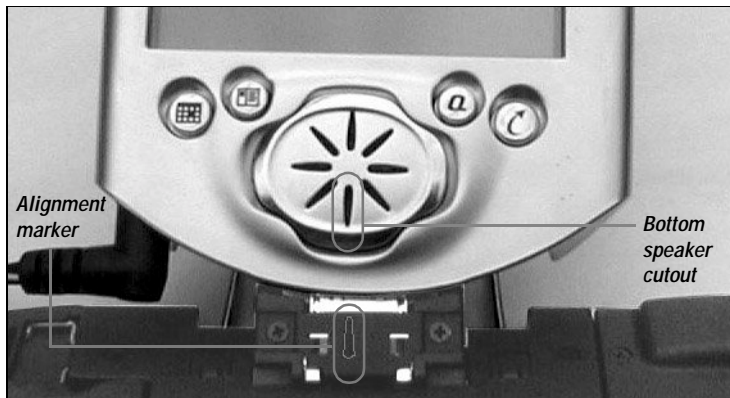
Lifting the docking connector

- 3 If your iPAQ needs charging, connect the AC adapter to the right angle power connector dongle, then connect the dongle to your iPAQ.



CAUTION: You must use the right angle power connector dongle that comes with the keyboard. Other connectors will not offer the same stability or fit and may cause interference when using the Stowaway keyboard.

- 4 Line up the bottom speaker hole with the alignment marker on the keyboard docking connector and push down gently to make the connection.



Compaq iPAQ Pocket PC and Stowaway keyboard alignment markers

You can now begin typing.



NOTE: Use the keyboard on a firm, flat surface for optimum performance and stability.

Closing the Stowaway Portable Keyboard

- 1 Pull your iPAQ upward to remove it from the docking connector and disconnect the right angle power connector (if connected).
- 2 Fold down the docking connector and PDA foot until flat, then slide the docking mechanism into the keyboard.



Retracting the docking mechanism

- 3 With the unit still on a flat surface, slide the red end-grips toward the ends of the case, separating the keyboard sections as far apart as possible.



Sliding the Stowaway keyboard ends apart

- 4 Lift the keyboard, push the center up to form a “W,” then close the keyboard, pressing the four corners of the case together until they click into place.



Folding the Stowaway keyboard

Using Your Stowaway Portable Keyboard

Starting the Keyboard Software

After installing the Stowaway keyboard software and restarting your Compaq iPAQ Pocket PC, the keyboard software runs automatically and you can use the keyboard at any time to enter characters or commands.



NOTE: If the keyboard does not function after installing the Stowaway keyboard software and resetting the iPAQ, check the settings in the Stowaway application. For more information, see "Using the Stowaway Application" on page 15.


Stowaway Key Functions

Most keys on the Stowaway keyboard work in the same way as on a standard keyboard. The exceptions are:

- Application keys The Inbox/Notes, Contacts/Word, Calendar/Excel, and Tasks/Money keys are preprogrammed shortcut keys on the right side of the keyboard.
- Today key The Today key activates the Today application.
- Caps Lock key The Caps Lock key toggles the Caps Lock mode in the Stowaway keyboard.

Fn Keys

The Fn key on the Stowaway keyboard enables additional key functions such as Num Lock and Menu. All keys embedded with blue characters are accessible by pressing Fn + <key>. The following table lists the available Fn key function combinations.

<i>Key Sequence</i>	<i>Emulates</i>	<i>Result</i>
Fn + Caps Lock	Num Lock key	All keys embedded with brown characters are accessible by enabling the Num Lock setting. Enabling Num Lock emulates a 10-key keypad interface found on most standard keyboards.
Fn + Backspace	Off key	Turns off your iPAQ. To turn it back on, press the Power button.
Fn + Enter	OK key	Selects the “OK” in the top-right corner of the display. Selecting or tapping “OK” usually closes the window.
Fn + Tab	ESC key	Closes the current window, exiting the application, if supported. Esc functions may vary between applications.
Fn + number	Hot-keys	Launches a specific user-defined application. For more information, see “Assigning Hot-Keys” on page 18.
Fn + Windows	Right tap	Brings up menu options. Same as “tap and hold” or right-click.
Fn + Delete	Insert key	Toggles the Insert/Overwrite mode of the application, if supported. The use of the Insert key may vary between applications.
Fn + Space bar		Selects the Show/Hide option for the on-screen keyboard. Hiding the on-screen keyboard increases the working area. Same as tapping on the keyboard icon.
Fn + Small Space	Shortcut key	Launches the Stowaway keyboard Stowaway application.
Fn + Today	Shortcut key	Launches QStart. Tap Start , then Help for a description of and information on how to use the QStart feature.

Navigation Keys

The navigation or arrow keys, located in the lower-right corner of the Stowaway keyboard, enable you to quickly relocate the cursor on your iPAQ by using the Fn, Shift, and Ctrl keys in combination with the arrow keys. The following table lists the available navigation key combinations.

<i>Key</i>	<i>Result</i>
Fn +	
↑	Emulates the Page up key.
↓	Emulates the Page down key.
←	Emulates the Home key.
→	Emulates the End key.
Shift +	
↑	Highlights one line of text upward from the cursor position.
↓	Highlights one line of text downward from the cursor position.
←	Highlights one character to the left of the cursor position.
→	Highlights one character to the right of the cursor position.
Ctrl +	
↑	Moves the cursor up one paragraph.
↓	Moves the cursor down one paragraph.
←	Moves the cursor to the right one word.
→	Moves the cursor to the left one word.

Things to Remember

Hardware

- Typing with the Stowaway keyboard on your knee does not provide the same robust feel as typing on a flat, solid surface. If you set the keyboard on an uneven surface, it will bow slightly in the center. To stabilize the Stowaway keyboard, place it on a firm, flat object such as a magazine, book, or briefcase.
- Use your stylus for selecting list items and making menu selections.
- Use the stylus wells in the upper right and left corners of the Stowaway keyboard to keep your stylus within reach.
- Make sure that you fully extend the docking mechanism and click the docking connector into place before attaching your iPAQ to the Stowaway keyboard to avoid possible hardware damage.

Software

- The Tab key functions as a tab character when you type in text such as in Notes or Word, but will also move between fields.
- Inserting your iPAQ into the Stowaway before powering on your iPAQ ensures that the keyboard is recognized for immediate use.
- Key combination results are based on Pocket Word and Notepad. Other applications may not support the key combinations or have varying results.
- Plugging in the ActiveSync cable can temporarily disable the Stowaway keyboard software. To enable the keyboard software, disconnect the ActiveSync cable and power cycle your iPAQ.

Comfortable Typing

Research suggests that physical discomfort and injury to nerves, tendons, and muscles may be related to repetitive motion, an improperly set up work area, incorrect body posture, and poor work habits.

To reduce the risk of injury, follow these precautions:

- Stand, stretch, and move around several times every hour.
- Switch hands while performing tasks. Use shortcut keys to move efficiently and avoid repetitive, awkward movements.
- Type gently and lightly.
- Relax your shoulders and keep your elbows at your sides. Adjust the keyboard so that you don't have to stretch to reach it.
- Adjust your position so that you don't have to bend your wrists to type; avoid placing your wrists on a sharp edge.

If you feel discomfort or numbness in your hands, wrists, arms, shoulders, neck, or back while typing, consult a qualified medical professional.

Customizing Your Stowaway Portable Keyboard Features

After installing the keyboard software on your Compaq iPAQ Pocket PC, you can customize its options through the Stowaway application.

Using the Stowaway Application

To access the Stowaway application, tap **Start**, then **Stowaway** on your iPAQ or press **Fn + Space** (small Space key) on the keyboard.

The available Stowaway application tabs are:

- Config Shows the Stowaway configuration options
- Hot-Key Lists the Fn 1 - 0 key assignments
- About Shows the software name, version, copyright, and Help button

Configuring Keyboard Settings

The Config tab in the Stowaway application allows you to regulate the keystroke speed and enable/disable the following features:

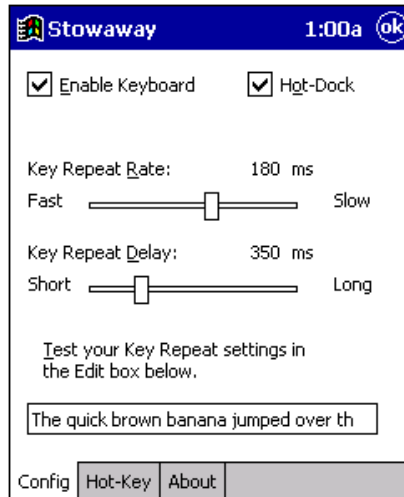
- Enable Keyboard Allows the keyboard to work properly. Disabling the keyboard suspends keyboard functions and frees memory resources for tasks that do not require the keyboard, such as the voice recorder.

To disable the keyboard, open the Stowaway application, and tap on the box next to Enable Keyboard so that the check mark disappears.

- Hot-Dock Allows for keyboard detection at any time while the iPAQ is on. Disabling Hot-Dock causes the software to detect the keyboard only when the iPAQ powers up.

To enable Hot-Dock, open the Stowaway application, and tap on the box next to Hot-Dock so that the check mark appears.

To change these settings, open the Stowaway application. You will see the Config tab at the bottom of the Stowaway Settings window.



Stowaway Config tab

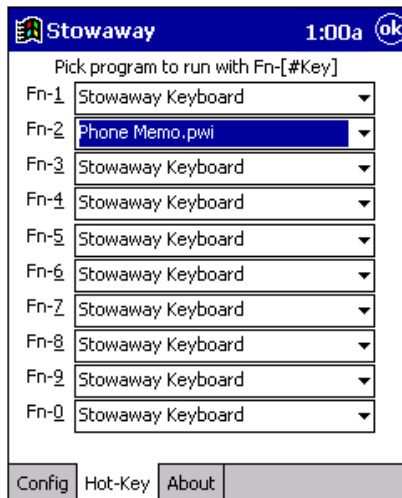
Set your preferences and close the window by pressing **Fn + Enter** on the keyboard or tapping **OK** on the iPAQ to save your changes.

Assigning Hot-Keys

The Stowaway keyboard software provides ten user-definable hot-keys through the use of the Fn key plus the 1 through 0 keys across the top of the keyboard.

To define these hot-keys:

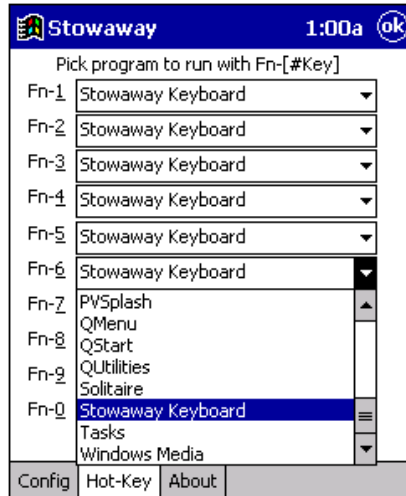
- 1 Open the Stowaway application, then tap the Hot-Key tab.



Stowaway Hot-Key tab

- Choose the Fn + number you want to assign, then tap on the drop-down menu arrow.

An application list appears.



Fn + number assignment screen

- Select the application you want to assign to the Fn + number.

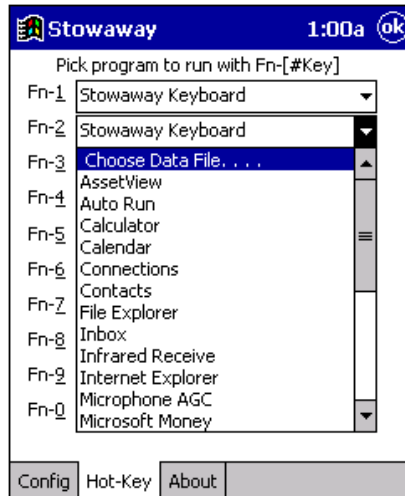
Closing the window by pressing Fn + Enter on the keyboard or tapping OK on the iPAQ saves the Fn + number assignments automatically.



NOTE: Use the programmable Fn keys for applications you use the most, such as QMenu.

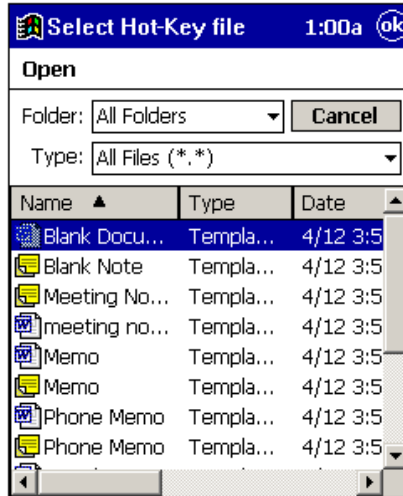
To assign an Fn key to open a specific file, such as a Word or Excel document:

- 1 From the Hot-Key tab, choose the Fn + number you want to assign, then tap on the drop-down menu arrow.
- 2 Tap **Choose Data File...** .



Fn + number data file list

A list of data files appears.



Select Hot-Key file screen

- 3 Tap on the specific file you want to assign to the Fn + number.

The Stowaway Hot-Key tab screen appears.

Closing the Stowaway application by pressing Fn + Enter on the keyboard or tapping OK on the iPAQ saves the Fn + number assignments automatically.

Accessing Help from the About Tab

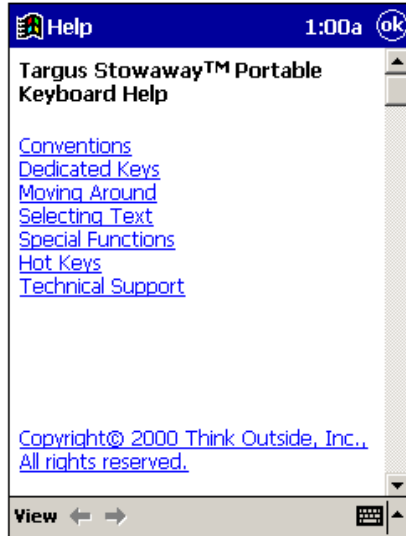
The About tab in the Stowaway application allows you to view the Stowaway keyboard software version, copyright and trademark information, and also contains the Stowaway keyboard Help button.

To access About, open the Stowaway application, then tap the About tab. To access Stowaway keyboard Help, tap the Help button.



Stowaway About tab

The Stowaway Help contents screen appears.



Stowaway Help contents screen

To view all of the Help topics for your iPAQ from the Stowaway Help file, tap **View** in the lower-left corner, and then tap **All Installed Help**.

You can also access the Stowaway Help file from the Programs window by tapping **Start**, then **Help**, and then **Stowaway**.

Troubleshooting

Frequently Asked Questions

What should I do when I type on the keyboard, and nothing happens?

- Check that your Compaq iPAQ Pocket PC is charged, or that you have the AC adapter firmly connected to a working outlet.
- Make sure that your iPAQ is properly connected to the Stowaway Portable Keyboard.
- Verify that the software is installed according to instructions.
- Confirm that the Stowaway keyboard software is enabled.
- Use your stylus to access the Stowaway Help button from the Stowaway application. For more detailed information, see “Accessing Help from the About Tab” on page 22.

Why can't I synchronize my Compaq iPAQ Pocket PC when it is attached to the keyboard?

The Stowaway Portable Keyboard does not replace your iPAQ computer's cradle. To synchronize, remove your iPAQ from the Stowaway keyboard and insert it into the cradle. Then, synchronize as usual.

Can I use the stylus while connected to the keyboard?

Yes, you can use the stylus and the keyboard simultaneously. For added convenience, there are two stylus wells located in the top corners of the keyboard.

Can I use my keyboard while I am using the PC Card Expansion Pack or the CF Card Expansion Pack?

Yes, if the expansions don't use the same communications port as the keyboard. Otherwise you will have to switch between the keyboard and the expansion.



NOTE: The viewing angle is slightly different when using an expansion pack with the keyboard.

My expansion pack comes with a power dongle, is it necessary to connect both the pack and Compaq iPAQ Pocket PC to AC power when using the keyboard?

No, the expansion pack can work by drawing power from the iPAQ. For uninterrupted use and to avoid draining the iPAQ's battery, connect the iPAQ to AC power.

Can I use my keyboard with other Compaq iPAQ Pocket PC devices?

The Targus Stowaway Portable Keyboard is designed to work only with the Compaq iPAQ Pocket PC. Your keyboard will operate with the appropriate iPAQ model after the corresponding software drivers are installed.

Other versions of Targus Stowaway products are available for different PDAs.

Please check our Web site at www.targus.com for more frequently asked questions, product information, and software updates.

Is there a way my Compaq iPAQ Pocket PC can detect my keyboard without having to cycle the power?

Yes, enable the Hot-Dock feature from the Stowaway application. When Hot-Dock is disabled (the default setting) the keyboard is only detected while your iPAQ is powering up. Enabling Hot-Dock prompts your iPAQ to detect the keyboard at any time the power is on. For instructions on enabling Hot-Dock, see "Configuring Keyboard Settings" on page 16.

Warranty

Targus warrants this product to be free from defects in materials and workmanship for one year. If your Targus Stowaway Portable Keyboard is found to be defective within that time, we will promptly repair or replace it. This warranty does not cover accidental damage, wear and tear, or consequential or incidental loss. Under no conditions is Targus liable for loss or damage to a computer; nor loss of, or damage to, programs, records, or data; nor any consequential or incidental damages, even if Targus has been informed of their possibility. This warranty does not affect your statutory rights.

Warranty Registration at http://www.targus.com/product_registration.asp

Technical Support

In the unlikely event that you encounter a problem with your Targus accessory, please contact our technical support team at:

Email: techsupport@targus.com

Internet: http://www.targus.com/tech_support.asp

Our knowledgeable staff is also available to answer your questions through one of the following telephone numbers.

North America

Monday through Friday, 8:00 a.m. (08:00) to 6:00 p.m. (18:00) Eastern time:

US & Canada: 800-283-6325

Europe

Belgium	+32 0 02-717-2451
Denmark	+45 0 35-25-8751
France	+33 0 1-64-53-9151
Germany	+49 0 21-16-579-1151
Italy	+39 0 24-827-1151
Netherlands	+31 0 53-484-9470
Spain	+34 0 91-745-6221
Sweden	+46 0 8-571-4058
Switzerland	+41 0 1-212-0007
United Kingdom	+44 0 20-7744-0330
Eastern Europe & others	+31 0 53-484-9479

Regulatory Compliance

This device complies with Part 15 of the FCC Rules. Operation is subject to the following two conditions: (1) This device may not cause harmful interference, and (2) This device must accept any interference received, including interference that may cause undesired operation.

FCC Statement

Tested to Comply

This equipment has been tested and found to comply with the limits of a Class B digital device, pursuant to Part 15 of the FCC Rules. These limits are designed to provide reasonable protection against harmful interference in a residential installation. This equipment generates, uses, and can radiate radio frequency energy and if not installed and used in accordance with the instructions, may cause harmful interference to radio communications. However, there is no guarantee that interference will not occur in a particular installation.

If this equipment does cause harmful interference to radio or television reception, which can be determined by turning the equipment off and on, the user is encouraged to try to correct the interference by one or more of the following measures:

- Reorient or relocate the receiving antenna
- Increase the separation between the equipment and receiver
- Move the computer away from the receiver
- Connect the equipment into an outlet on a circuit different from that to which the receiver is connected.

Stowaway is a trademark of Think Outside, Inc. Compaq and the Compaq logo are registered in the U.S. Patent and Trademark Office. IPAQ is a trademark of Compaq Information Technologies Group, L.P. All other trademarks are the property of their respective owners.



The Leading Global Supplier of Portable Solutions
Visit our Web site at: www.targus.com

Features and specifications are subject to change without notice. ©2001 Targus Corp.
PA840

BRUSSELS

HANNOVER

BARCELONA

TOKYO

MILANO

AMSTERDAM

SINGAPORE

Free Manuals Download Website

<http://myh66.com>

<http://usermanuals.us>

<http://www.somanuals.com>

<http://www.4manuals.cc>

<http://www.manual-lib.com>

<http://www.404manual.com>

<http://www.luxmanual.com>

<http://aubethermostatmanual.com>

Golf course search by state

<http://golfingnear.com>

Email search by domain

<http://emailbydomain.com>

Auto manuals search

<http://auto.somanuals.com>

TV manuals search

<http://tv.somanuals.com>