

The TARGUS logo is displayed in a stylized, italicized font with a registered trademark symbol. It is positioned on a black horizontal bar that has a curved right edge. The background of the entire page features a faint, light gray world map with latitude and longitude lines.

Wireless Laser Mouse

The TARGUS logo is centered on the page, rendered in a bold, italicized font with a registered trademark symbol.

Making Your Mobile Life Easier.®

Visit our Web site at: www.targus.com

Features and specifications are subject to change without notice.

© 2005 Targus Group International, Inc. and Targus Inc.

AMW14US/400-0283-001A

USER'S GUIDE

Making Your Mobile Life Easier.®

BRUSSELS HANNOVER BARCELONA TOKYO MILAN AMSTERDAM SINGAPORE

LONDON PARIS NEW YORK LOS ANGELES TORONTO HONG KONG SYDNEY

PMS Black
15%

PMS Black
100%

TARGUS WIRELESS LASER MOUSE

Introduction

Congratulations on your purchase of the Targus Wireless Laser Mouse for the desktop. This ergonomically-designed mouse offers the latest in laser tracking technology as well as the most up-to-date wireless features. It allows for improved tracking accuracy on most types of surfaces, even some mirror and glass. With 6 channels and 256 IDs per channel, the mouse's digital signal processor offers a new level of accuracy and precision in wireless data transmission. Productivity is enhanced by a practical 8-button design that includes such short cuts as Internet back and forward, applications switch and scroll up and down functions.



NOTE: WHILE THE MOUSE IS FUNCTIONING, NO LASER LIGHT IS VISIBLE TO THE NAKED EYE. BE CAREFUL NOT TO LOOK DIRECTLY INTO THE EMITTER HOLE WHILE THE MOUSE IS ACTIVE.

Package Contents

- Wireless Laser Mouse
- USB Receiver
- USB Charge Cable
- USB Extension Seat
- 2 x AA Rechargeable Batteries
- User Guide

System Requirements

Hardware

- USB interface

Operating System

- Windows® 2000/XP

For Desktop PCs

For instances where the PC is positioned under a desk or other places that might impede wireless connectivity, use of the extension seat is recommended.

- 1 Connect the extension seat to an available USB port on your PC.
- 2 Plug the USB wireless receiver into the port labeled 'receiver' located at the top of the seat.
- 3 Connect the USB end of the charge cable to the USB port labeled 'charger' on the extension seat.

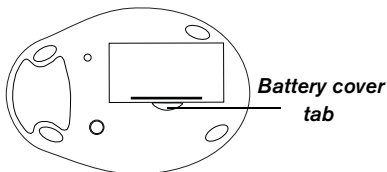
For Notebook PCs

- 1 Connect the extension seat to an available USB port on your PC.
- 2 Plug the USB wireless receiver into the port labeled 'receiver' located at the top of the seat.
- 3 Connect the charge cable's USB end to the USB port labeled 'charger' on the extension seat.

Alternatively, if more than one USB port is available you may opt not to use the extension seat by plugging the receiver and charging cable directly into the notebook PC's open USB ports.

Installing the Batteries

- 1 Remove the battery cover from the bottom of the mouse by pressing the tab located on the bottom and lifting it off.



BOTTOM OF MOUSE

- 2 2 AA NiMH rechargeable batteries are included. Insert the supplied batteries, making sure that the positive (+) and negative (-) ends of each battery match the polarity indicators inside the battery housing.



WARNINGS: USE ONLY HEAVY-DUTY NiMH RECHARGEABLE BATTERIES. NEVER USE ALKALINE BATTERIES.

AVOID MIXING NEW AND USED BATTERIES.

- 3 Slide the battery cover back into position until it "clicks" firmly into place.

Charging the Mouse

For best results, you should charge the mouse at least eight hours before using it.

- 1 Connect the supplied charge cable to the charge port on the supplied extension seat and plug the extension seat cable to the USB port on your computer.
- 2 Connect the other end of the charge cable to the mouse.
- 3 Alternatively, you can connect the charge cable's USB connector directly into an available USB port on your computer.

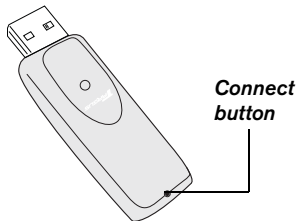


NOTE: TO CONTINUOUSLY CHARGE THE MOUSE VIA THE USB CHARGE CABLE, YOUR COMPUTER MUST BE ON AND AWAKE. FOR BEST RESULTS, TURN OFF YOUR COMPUTER'S POWER MANAGEMENT FEATURE WHILE CHARGING THE MOUSE.

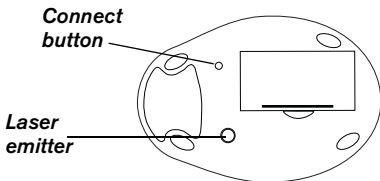
Synchronization

Make sure that your computer is turned on and has detected the USB receiver before you synchronize.

- 1 Press and release the connect button on the receiver.



- 2 Press and release the connect button located on the bottom of the mouse.



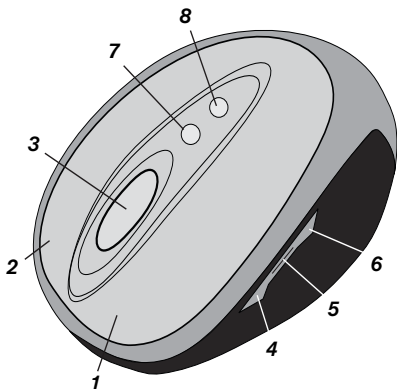
The receiver's status light flashes while it scans the identification codes. When synchronized the status light stops flashing. This process must be completed within a few seconds or the steps will need to be repeated.

After successfully synchronizing, you are ready to use the mouse.



NOTE: REMOVING THE BATTERIES WILL REQUIRE YOU TO SYNCHRONIZE THE MOUSE WITH THE RECEIVER AGAIN.

Using the Mouse



1: Left Mouse Button

2: Right Mouse Button

3: Middle Button/Scrolling Wheel

4: Internet Page Forward

5: Application Switch

6: Internet Page Backward

7: Scroll Up

8: Scroll Down



NOTES: THE 4TH THROUGH 8TH BUTTONS REQUIRE WINDOWS 2000 OR XP TO FUNCTION.

DUE TO THE IMPROVED TRACKING SPEED OF THE LASER ENGINE, USERS MAY FIND THE CURSOR MOVEMENT IS FASTER THAN A CONVENTIONAL OPTICAL MOUSE. CURSOR SETTINGS CAN BE CHANGED FROM THE CONTROL PANEL IN WINDOWS.

Safety Measures

- Although this mouse is a Class 1 Laser Product and safe for operation, avoid pointing the laser into the eyes or looking directly into the laser emitter.
- Keep the mouse away from young children.
- Any attempt to disassemble, adjust or repair the mouse may result in exposure to laser light or other safety hazards.

Sleep Mode

The mouse's sleep mode feature activates after 8 minutes of non-operation. To wake the mouse, click the left, right or scroll mouse button.

Troubleshooting

What do I do if the mouse does not work?

- Make sure that the polarity of the batteries is correct. The positive (+) and negative (-) ends of each battery must match the positive (+) and negative (-) connections in the battery housing.
- Make sure that the batteries are fully charged. Check your computer's suspend mode settings, as the mouse will not charge while the computer is in suspend mode.
- Check that the receiver's USB connector is firmly attached to the USB port on your computer or the

extension seat, or that the extension seat's cable is connected to your PC.

- Make sure you have established a wireless link between the mouse and its receiver. See "Synchronization" on page 5.

I do not see the laser light when the mouse is active.

- Unlike traditional optical mice, the light is not visible when the laser mouse is active.
- To make sure the mouse is on and functioning properly, move the mouse back and forth and check to see if the cursor responds.

My mouse does not work on a mirror or glass surface.

- Though rated for most of these kinds of surfaces, occasionally there will be one such surface that will cause the mouse to work improperly or not at all.
- If you are using the mouse on a reflective or mirrored surface, move it to another surface.

What do I do if the response time of the mouse is slow or the mouse intermittently stops working?

- "Increase the distance between the mouse's receiver and the rest of your computer equipment. Use the USB extension seat if necessary.
- "Increase the distance between the mouse's receiver and the base units of other wireless devices.
- "Turn off any wireless devices and their base units that are near the mouse's receiver.

- Metals, such as iron, aluminum or copper may slow down the mouse's response time or cause the mouse to fail temporarily.
- If you are using the mouse on a metal surface, move it and the receiver to a non-metal surface.

Technical Support

For technical questions, please visit:

US

Internet: www.targus.com/support.asp

Australia

Internet: www.targus.com.au

Email: infoaust@targus.com

Telephone: 1800-641-645

New Zealand

Telephone: 0800-633-222

Product Registration

Targus recommends that you register your Targus accessory shortly after purchasing it. To register your Targus accessory, go to:

<http://www.targus.com/registration.asp>

You will need to provide your full name, email address, phone number, and company information (if applicable).

Warranty

Targus warrants this product to be free from defects in materials and workmanship for one year. If your Targus accessory is found to be defective within that time, we will promptly repair or replace it. This warranty does not cover accidental damage, wear and tear, or consequential or incidental loss. Under no conditions is Targus liable for loss of, or damage to a computer; nor loss of, or damage to, programs, records, or data; nor any consequential or incidental damages, even if Targus has been informed of their possibility. This warranty does not affect your statutory rights.

Regulatory Compliance

This device complies with Part 15 of the FCC Rules. Operation is subject to the following two conditions: (1) This device may not cause harmful interference, and (2) This device must accept any interference received, including interference that may cause undesired operation.

FCC Statement

Tested to Comply

This equipment has been tested and found to comply with the limits of a Class B digital device, pursuant to Part 15 of the FCC Rules. These limits are designed to provide reasonable protection against harmful interference in a residential installation. This equipment generates, uses, and can radiate radio frequency energy and if not installed and used in accordance with the instructions, may cause harmful interference to radio communications. However, there is no guarantee that interference will not occur in a particular installation.

If this equipment does cause harmful interference to radio or television reception, which can be determined by turning the equipment off and on, the user is encouraged to try to correct the interference by one or more of the following measures:

- Reorient or relocate the receiving antenna;
- Increase the separation between the equipment and receiver;

Targus Wireless Laser Mouse

- Move the computer away from the receiver;
- Connect the equipment into an outlet on a circuit different from that to which the receiver is connected.

Intel and Pentium are registered trademarks of Intel Corporation. Windows is a registered trademark of Microsoft Corporation. All other trademarks are the property of their respective owners. © 2005, Targus Group International, Inc. and Targus, Inc., Anaheim, CA 92806 USA.

Free Manuals Download Website

<http://myh66.com>

<http://usermanuals.us>

<http://www.somanuals.com>

<http://www.4manuals.cc>

<http://www.manual-lib.com>

<http://www.404manual.com>

<http://www.luxmanual.com>

<http://aubethermostatmanual.com>

Golf course search by state

<http://golfingnear.com>

Email search by domain

<http://emailbydomain.com>

Auto manuals search

<http://auto.somanuals.com>

TV manuals search

<http://tv.somanuals.com>