

CASSETTE DECKS/CD DECKS

#CDR510 CD RECORDER & CD/MP3 PLAYER



Marantz #CDR510 CD Recorder and CD/MP3 Player with the rarely found "Minute Track Mode" Recording feature, each minute of recording is automatically marked as a track ID, enabling the listener to navigate to a specific minute track of the recording during playback.

DaM Professional

FEATURES:

- Truly Independent Wells (record the worship service while simultaneously playing accompaniment music)
- RS232C and Truly Independent Sections
- High Speed 2X Dubbing
- Direct Track Access, Cue to Music
- IR Remote Control Included
- Playback of CD, CDR-R, CD-RW, Unfinalized Discs & MP3 Files
- 19" Rack Mountable, 2RU

#CDR510 CD RECORDER

Retail \$949.99 **ASL SALE PRICE \$CALL**

TEAC #CD-P1260 COMPACT DISC PLAYER



FEATURES:

- Support CD, CD-R/RW, and MP3 discs
- 8 Times Oversampling Rate
- Random Memory Program
- Repeat Play (1/All)
- Shuffle Play
- LCD Display
- Full Function Remote Control
- Headphone Jack with Level Control

#CD-P1260 CD Player with Remote **\$129**

FLECO #KT-71R KEY TRANSPOSER



Digitally transpose the key of your accompaniment Tape/CD without changing the speed of your track! The touch of a button provides ± 6 half step (sharp or flat) pitch changes. This compact unit will work with any tape or CD player and almost any consumer high-fi or pro-audio sound system (RCA In/Out). Rack Mount Ears included.

#KT-71R Fleco Key Transposer

List \$399.00 **ASL PRICE \$235**

TASCAM® #CC-222SL CD RECORDER & CASSETTE COMBO

CD-RW RECORDER FEATURES:

- Slot loading transport
- Accepts discs: CD-R, CD-RW, CD-R-DA, CD-RW-DA
- MP3 playback
- 24 bit AD/DA converter
- Digital input volume control
- Sampling rate converter (32kHz/ 44.1kHz / 48kHz)
- Unbalanced analog I/O (RCA)
- COAXIAL and Optical digital I/O (CD)
- Fade in and out
- Auto Track Increment (via SPDIF or Audio Level)
- Erase or Un-finalize of CD-RW discs
- Multiple playback modes

CASSETTE FEATURES:

- $\pm 10\%$ Pitch Control
- Return to Zero Function
- Dolby B Noise Reduction
- Auto Reverse

GENERAL FEATURES:

- RIAA Phono Input for recording onto CD-R/RW discs or cassette tape
- Independent Output for CD & Cassette (selectable)
- Continuous Play between Cassette & CD
- Cassette to CD-R/RW dubbing and vice versa
- Headphone Output w/Level Control
- RC-222 Wireless Remote Included
- Dedicated analog input level controls
- Power-on play
- 19" Rack Mountable, 3RU

#CC-222SL Tascam CD Recorder & Cassette Combo Deck

Retail \$949.00 **ASL \$CALL**

TASCAM® #CD-A500 CD PLAYER/CASSETTE DECK COMBO

FEATURES:

- CD sync feature
- Wireless remote included
- 19" Rack Mountable, 3RU Height
- $\pm 12\%$ pitch adjustment on cassette deck
- Continuous play function between cassette and CD
- Integrated CD Player/Reversible Cassette Deck
- RCA unbalanced outputs common for both cassette deck and CD player
- RCA unbalanced outputs dedicated to the CD player

#CD-A500 Tascam CD Player/Cassette Deck ComboRetail \$499.00 **ASL \$CALL**

TASCAM® PORTABLE CD VOCAL/INSTRUMENT TRAINER

The new CD-VT2 gives singers and instrumentalists the ability to slow down the speed of a CD without changing the pitch - allowing artists, musicians, students, and music teachers to practice, learn, and teach vocal harmonies, fast rap passages and complex melodies from their favorite music.

FEATURES:

- New improved ultra compact design
- $+16\%$ to -50% pitch control in 1% steps
- VSA (Variable Speed Audition, pitch control without affecting key)
- Key Control: ± 6 semi-tone, in semi-tone steps with ± 50 cents fine tune
- Vocal/Instrument Cancellor
- Battery operation or optional power supply PS-P520
- Plus much, much more!

#CD-VT2 Tascam Vocal Instrument Trainer & CD Player

ASL SALE PRICE \$149... PLUS get the PS-P520 Power Supply FREE! (\$25 Value!)

#CC-222SL



Operates as two individual recorders

TASCAM.

#CD-A500



TASCAM.

#CD-VT2



TASCAM.

FREE POWER SUPPLY!
(\$25 Value)

SHURE® IN-EAR PERSONAL MONITOR SYSTEMS

SHURE® #PSM200 IN-EAR PERSONAL MONITOR SYSTEMS, WIRED/WIRELESS



The #PSM200 Wireless In Ear Monitor System Features:

- 8 Selectable UHF Frequencies Built In
- Run up to 4 Systems Simultaneously
- Dual-Function Bodypack Receivers operate as wireless, wired, or both
- 1/4" Line Input on Bodypack
- Two mic/line (XLR-1/4" Combo) input channels with input level controls
- Built-In Headphone Limiter
- High-Impact Plastic Chassis
- E2 High Energy Driver Earphones
- Available in Wired Version

#P2TRE2... Wireless System.....Retail \$798**CALL FOR \$**
 #P2RE2..... Wired SystemRetail \$468**CALL FOR \$**

SHURE® SOUND ISOLATING EARPHONES

#SCL2



#SCL3



Designed specifically for use with Shure PSM systems (but great for all kinds of personal audio applications) these sound isolating earphones deliver incredible sound and performance in an unobtrusive package. Along with their high fidelity, full-bandwidth transducers, the natural design of these stereo earphones allows them to rest comfortably in the ear, providing a tight seal for sound isolation and a snug, secure fit. Personalize your earphone fit with included disposable foam sleeves or reuseable flex sleeves (S, M, L). Universal 3.5mm (1/8") plug & 62" cable.

#SCL2 Earphones w/ Single High Energy Drivers, Black or Clear
 Retail \$110.00.....**CALL FOR ASL \$**

#SCL3 Earphones w/ Single Low Mass/High Energy Drivers w/
 Extended Frequency Responce, Black, Gray, or White
 Retail \$200.00**CALL FOR ASL \$**



SHURE® #PSM600 IN-EAR PERSONAL MONITOR SYSTEMS, WIRED/WIRELESS



The #PSM600 Wireless In Ear Monitor System Features:

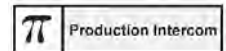
- 2 Compatible UHF Frequencies Built In
- Run up to 10 Systems Simultaneously
- Mono, Stereo, and MixMode® Operation
- Personal Panning Balance Control
- Metal Construction
- Low Battery LED Warning
- Front Panel Headphone Monitoring
- Defeatable Audio Limiting
- XLR and 1/4" Inputs
- E3 Low Mass/High Energy Earphones
- Available in Wired Version

#P6TRE3... Wireless System.....Retail \$1686**CALL FOR \$**
 #P6HWE3.. Wired SystemRetail \$891**CALL FOR \$**

ECONOMY INTERCOM SYSTEMS



The Package consists of the system Interface with a power adapter and 2-to-4 headset/belt pack stations. This system offers simplicity and utility at an affordable price. Expandable up to 10 total stations. The system Interface is compatible with other popular intercom systems. Use standard microphone cables to interconnect modules.



	MODEL #	DESCRIPTION	PRICE
A.	EC-2B PLUS	2-Station Economy Intercom System	\$595
B.	EC-3B PLUS	3-Station Economy Intercom System	\$815
C.	EC-4B PLUS	4-Station Economy Intercom System	\$1030

"Alpha... has once again performed exceptionally. Thank you for being the consistent provider of high quality services you are to me and your customers. It's people like you and your group that makes the job just a little easier."

Mark Thiessen
 University Baptist Church
 Houston, TX

PERSONAL MONITOR SYSTEMS

AVIOM® PERSONAL MONITOR SYSTEMS

SIMPLIFY STAGE AND STUDIO SETUPS...

A revolutionary monitoring system that can transmit sixteen channels of audio over a single CAT5 cable with virtually no latency! Audio from your main mixing console is routed to the AN-16/i Input Module where audio signals are converted to digital data (A-Net signal).

The A-Net signal is then connected via CAT5 cable to an A-16D PRO Rack Mounted A-Net Distributor which connects up to eight A-16II Personal Mixers in parallel. Each A-16II gives the performer control over their own mix: channel volume, grouping, pan, stereo, spread, master volume and global EQ. There are many ways to configure Aviom systems, call for more details and help with building your own custom monitor system.

AVIOM SYSTEM FEATURES...

- Sixteen channel select buttons with dual LEDs
- True stereo mixing with fully adjustable pan
- Dedicated Recall, Group, Solo, and Mute buttons
- New Held Solo mode
- Sixteen user Preset memory locations
- Create three Groups per mix Preset
- Pan/Spread control with LED readout
- Channel volume control with LED level readout
- Master Volume, Treble and Bass controls
- Line/Headphone audio output
- Auto-detect mono/stereo circuitry

AVIOM 4-STATION CHURCH MONITOR PACKAGE INCLUDES...

- (1) AN-16/i 16 Channel Input Module, Rack Mountable
- (1) A-16D PRO 8 Port A-Net Distributor w/ Internal Power Supplies
- (4) A-16II 16 Channel Personal Monitor Mixer w/ 30' CAT5 Cable
- (4) MT-1 Microphone Stand Mount for A-16II
- (1) L-100 100' Premium CAT5 Cable
- (1) NMT 10' 16 Channel Neutrik TRS Fan x Fan Snake

Aviom Monitor Package.....Retail \$5240.61 **CALL FOR ASL \$**

CALL FOR YOU LOW PACKAGE PRICE!

JUICE GOOSE POWER DISTRIBUTION STRIPS

#JG 8.0L POWER DISTRIBUTION STRIP

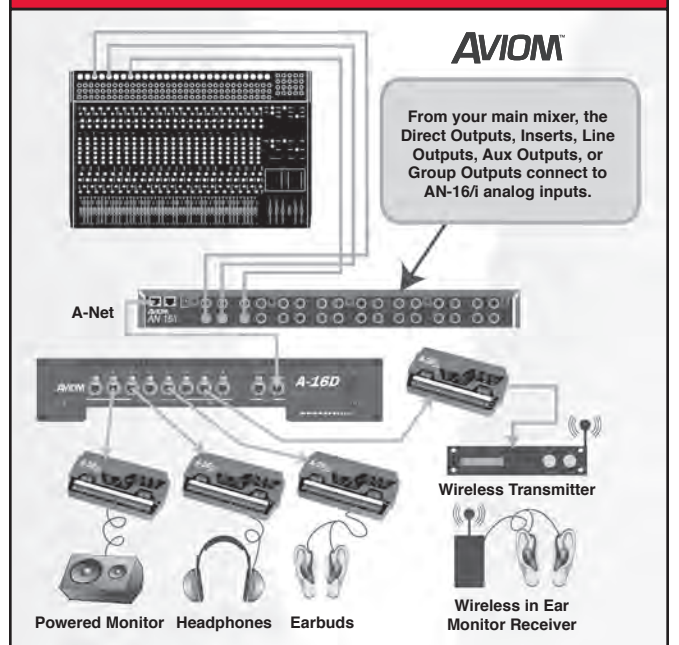


MODEL #	DESCRIPTION	PRICE
#JG 8.0	Rack Mount AC Power Strip w/ 8 Edison Receptacles, AC Line Conditioning, on/off Switch, 120v-15A Circuit Breaker	\$55
#JG 8.0L	Rack Mount AC Power Strip w/ 8 Edison Receptacles, AC Line Conditioning, on/off Switch, 120v-15A Circuit Breaker + Dimmable Pull-out Work Lights	\$79
#JG8.0LM	Rack Mount AC Power Strip w/ 8 Edison Receptacles, AC Line Conditioning, on/off Switch, 120v-15A Circuit Breaker + Dimmable Pull-out Work Lights + Color Coded 20 Step LED Input Volt Meter	\$120

AVIOM® PERSONAL MONITOR SYSTEMS



PERSONAL MONITOR SYSTEM DIAGRAM



PERSONAL MONITOR & PERSONAL LISTENING SYSTEMS

HEAR TECHNOLOGIES® PERSONAL MONITOR SYSTEM

EASY set-up and operation, EXCELLENT audio fidelity, EIGHT channels of audio and power over a single CAT5 Cable... all for an EXTREMELY ECONOMICAL price!

HEAR BACK 4-STATION CHURCH MONITOR PACKAGE

- (1) Hear Back FOH Hub
- (1) Hear Back Stage Hub Master
- (4) Hear Back Personal Monitors
- (4) Hearbud/Headset Combs
- (4) 50ft CAT5 Control Cables
- (1) 100ft CAT5 Hear Bus Cable
- (1) DA-88 25 Pin x TRS Snake

Hear Back Monitor Package

Retail \$2403.80

CALL FOR ASL LOW PACKAGE PRICE!

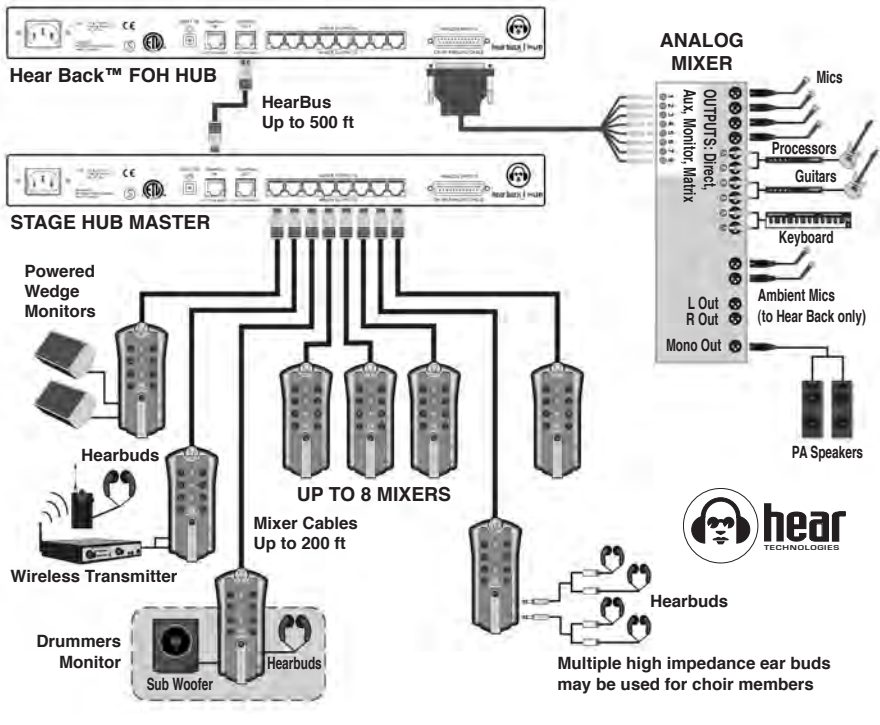


Hear Back Personal Monitor Mixer

Call for Help building a custom HEAR BACK system to fit your specific needs!



HEAR TECHNOLOGIES® PERSONAL MONITOR SYSTEM DIAGRAM



TELEX® PERSONAL LISTENING SYSTEM

TELEX® SOUNDMATE™ #ST-300 TRANSMITTER



TELEX® WIRELESS FM RADIO BROADCAST TRANSMITTER AND POCKET RECEIVERS



The Telex SoundMate™ personal listening systems help overcome background noise and poor building acoustics that can make listening difficult for the hearing impaired listener. A TELEX base station transmitter, a few portable belt pack receivers and your choice of accessories provides the needs of hearing impaired listeners.

Telex® SM-2 Personal Listening System Includes:

- (1) **ST-300 Base Transmitter**
ST-300 Features:
 - Mic, line, & 70v input options (XLR balanced & 1/4" unbalanced)
 - 17 selectable Frequencies
 - Front panel headphone jack with level control
- (4) **SR-50 Pocket Receivers**
- (4) **SEB-1 Single Earbuds**
- (1) **1/4 Wave Telescoping Antenna**
- (1) **SoundMate Wall Plaque**

Retail \$870.00.....**ASL SALE PRICE \$CALL**

OPTIONAL ACCESSORIES			
MODEL #	DESCRIPTION	PRICE	
A. SR-50/EB	Single Channel Pocket Receiver with Earbud	\$69	
B. SEB	Single Earbud and Cord	\$9	
C. EARSPKR	Ear Speaker Assembly	\$43	
D. HGA-1	Dipole Gain Antenna	\$55	
E. RMS	Rack Mount Kit for #ST-300 (not shown)	\$42	
F. CCS-12	Replacement Custom Covers	\$5	



FREE
Pocket Receiver & Single Earbud
(#SR-50 & #SEB-1) with the purchase of Telex SM-2 System. Good while quantities last!

SPEAKERS, P.A.'S, & FLOOR MONITORS

ALPHA 2+2+2 FLEXIBLE STAGE MONITOR SPEAKER SYSTEM VALUE PACKAGE

The ALPHA 2+2+2 Package provides the basics for 2 stage monitor foldback mixes (feeds) from your console. Four monitor speakers can be set up so that the piano and organ hear each other, the vocalist hears the accompaniment, the drummer hears everyone etc. The RMX amplifier output easily drives all 4 speakers with power to spare. Add optional cables, EQs, FBX, stands for Hot Spots and hardware as needed to complete your custom installation.

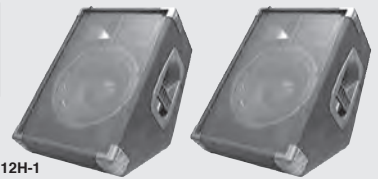
ALPHA PACKAGE INCLUDES:

- (1) QSC #RMX-850 DUAL AMPLIFIER drives 2-floor slant monitors and 2-Hot Spot monitors (see pg. 37).
- (2) ALPHA #ACM-112H-1 FLOOR SLANT MONITORS provide a full range musical foldback w/ a compact 12" 2-way design (see below).
- (2) HOT SPOT V.C. arms length, in-your-face compact monitors with built-in volume control. These speakers can sit at the piano or organ, or on a mic stand for the drummer (see right).

ASL #2+2+2 Monitor Package Retail \$1278 **ASL \$835**



(1) #RMX-850



(2) #ACM-112H-1

(2) #HOT SPOT w/ VC

Package Only
\$835

ALPHA CUSTOM FLOOR MONITORS

Alpha's Custom Floor Slant Monitor Speakers provide exceptional performance and durability. Constructed of 3/4" plywood with a heavy duty 16 gauge steel grill, recessed handles and carpet covering, these monitors are rugged and mobile. This floor monitor has a 12" mid-low driver and 90°x 40°horn; rated 250 watts long term / 500 watts peak power; 8 Ohm nom. impedance; 60Hz-18kHz frequency response. **Size: 18.4"H x 15"W x 21"D, 32 lbs.**

#ACM-112-H1



#ACM-112H-1 FLOOR MONITOR 12" - 2 WAY **ASL \$199**

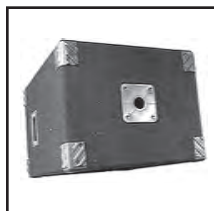
ALPHA CUSTOM P.A. SPEAKERS

Alpha's Custom P.A. Speakers feature high value and quality performance for portable P.A. systems. Cabinets are a 2-way ported reflex design, carpet covered with pocket handles, stackable interlocking corners, 16 gauge steel grill, dual 1/4" phone jack inputs and constructed of "no void", dimensionally stable structurewood. A high strength polycarbonate stand cup mount, that mates with Ultimate Support speaker stands, is installed flush in the bottom of each cabinet.

FEATURES:

- Drivers: 12" cone, 2" V.C & 1" diffraction horn
- RMS/Program Power: 250/500 watts
- Impedance: 8 Ohms
- Frequency Response: 60Hz-18KHz
- Sensitivity: 100dB @ 1-watt, 1-meter
- Input Jacks: Dual 1/4" phone
- Cabinet Size (HxWxD): 22.75x15.5x16.2
- Weight: 42-lbs

#ACP-112-H1



Flush Stand Cup Mount

#ACP-112-H1 SPEAKER Retail \$264.00 **ASL \$199**

GALAXY AUDIO® HOT SPOT

THE ORIGINAL & ALL-TIME BEST SELLING GALAXY AUDIO® HOT SPOTS

The Hot Spot personal monitor speaker's powerful sound, light weight and small footprint (4.5 lbs, 7" x 11" x 5.25") is ideal for just about any application. Mount one to a mic stand, set it on a keyboard or right on the floor, just about anywhere you need a monitor.

#HOT SPOT w/ VC



#HOT SPOT w/ Volume Control NOW with SPEAKON Input #SA-1 Stand Adaptor Included

#HOT SPOT Retail \$169.99..... **\$CALL**
#HOT SPOT w/ Volume Control..... Retail \$179.99..... **\$CALL**

GALAXY AUDIO® POWERED HOT SPOT

The Powered Hot Spot Monitor/One-Piece PA System has a built-in amplifier (100w @ 8Ω, 146w @ 4Ω), (1) 1/4" balanced input, (1) XLR balanced input with +24 VDC phantom power, Low-Mid-High EQ, (1) 1/4" speaker level output, (1) post EQ, post-level RCA line output and can drive up to (2) slave Hot Spots. (10.7 lbs, 7" x 11" x 5.25")

#PA5X140



#PA5X140 Powered Hot Spot #SA-1 Stand Adaptor Included

#PA5X140 POWERED HOT SPOT Retail \$399.95..... **\$CALL**

GALAXY AUDIO® MICRO SPOT - VC

THE NEW MORE COMPACT MICRO SPOT W/ VOLUME CONTROL

The ultra compact Micro Spot personal monitor, basically half the original Hot Spot! Bracket and #SA-1 Stand Mount included. (2.7 lbs, 7" x 6" x 5.25")

#MICRO SPOT w/ VC



#MICRO SPOT w/ Volume Control Retail \$99.99..... **\$CALL**

JBL® MONITORS & SPEAKERS

JBL® EON SERIES SPEAKERS

#EON15G2



Great as a Stage Monitor w/ angled-back design! Available in 10" & 15" models!



EON15G2 KEY FEATURES:

- 15" 2-way Powered Speaker System
- 300 watts low frequency and 100 watts high frequency (bi-amped) actual power delivered to drivers
- Built in 3-input mixer. One balanced mic/line input/two 1/4" phone line-level inputs. Two-band equalization
- Balanced loop-through/mix output. "Daisy-chain" additional EON Speakers or send the mixed output to a mixing console
- 60° x 90° (nominal) constant directivity horn
- Rugged, light-weight, black co-polymer enclosure
- Integral 35mm pole mount receptacle
- Multi-angle enclosure for front of house or stage monitor application
- Extended low-frequency performance delivers powerful bass down to 39 Hz

#EON15 G2

Powered Speaker System, 15" 2-Way, 400w (300w LF x 100w HF), 40Hz-18kHz, weight 46 lbs
Retail \$929.00 **ASL \$CALL**

#EON10 G2

Powered Speaker System, 10" 2-Way, 175w (125w LF x 50w HF), 65Hz-18kHz, weight 23 lbs
Retail \$669.00 **ASL \$CALL**

JBL® CONTROL SERIES SPEAKERS



The JBL® Control Series designed for contractors, offer the church volunteer installer the advantages of easy installation, exceptional performance, and low cost. Select full range compact #23s (4 lbs), mid-sized #25s (5 lbs), or larger #28s (12 lbs), all supplied with Invisiball™ mounting system and available in white or black. Add a dual 10" subwoofer for a full low end sound. This speaker series is the solution for smaller rooms, foyers, under balcony, and anywhere high quality controlled sound is needed in a small light weight installed package. (Sold in pairs only). **CALL FOR ASL PRICE!**

GALAXY AUDIO® PORTABLE PA SYSTEM

#AS-TV8 ANY SPOT TRAVELER



FREE
Ultimate Support
TS80B
Speaker Stand
with purchase of any
Any Spot Traveler!
\$129.99 Value!



NEW! Galaxy Audio® Any Spot Traveler AC/Battery Powered Portable PA System! Portable, lightweight, "all-in-one" PA system that's quick and uncomplicated to setup! **Loads of configurations available! Call for a quote on a Traveler designed specifically for your needs!**

FEATURES:

- Inputs: (1) XLR/1/4" combo with its own volume control and (1) Dual RCA with 2-Band EQ, and a Master Volume
- Outputs: (1) Dual RCA Line Out and (1) 1/4" Speaker Output to power an additional speaker
- Universal Power Supply/Battery Charger allows the Traveler to be used anywhere in the world
- Operates approx 6 hours on battery power alone
- May be operated while recharging the batteries without affecting the charge time
- Seamless switching to battery power in power failure
- Unique "plug in" modular design allows optional Function Modules to be easily added or removed onsite
- Durable ABS enclosure features a convenient carry handle and a provision for standard pole mounting (12"x9"x18.5", 26.5 lbs)

#AS-TV8 Traveler Base Unit Retail \$1019.99 **ASL \$749.99**

#AS-TV8 Traveler w/CD Player & Choice of Wireless Microphone
Retail \$1939.96 **ASL \$1279.99**

JBL® JRX100 SERIES SPEAKERS

#JRX112M



#JRX112M ECONOMY SPEAKER and/or MONITOR

12" 2-Way, 250w/1000w Portable Speaker System or Stage Monitor
Retail \$379.00 **ASL \$CALL**

COMMUNITY® & EV® SPEAKERS

ELECTRO-VOICE® ZX1 SERIES SPEAKERS



The ZX1 is one of the best compact speakers we've heard in a long time! It's so versatile it excels in just about any application you put it in...as a front of house speaker in low profile situations or mounted on a speaker stand for portable gigs. Rotate the 90°x50° horn, put it on it's side and get a 45° angle stage monitor! However you use the ZX1 you will be totally impressed!

#ZX1-90

200w/800w* 8" 2-Way Speaker System with 90°x50° Rotatable Waveguide Horn, NL4 connectors, Integrated Pole Mnt, Carrying Slot and Rubber Feet (black or white)

Retail \$350.00..... ASL \$CALL

#ZX1i-90

200w/800w* 8" 2-Way Weatherized "Perm Install" Speaker System with 90°x50° Rotatable Waveguide Horn, 4-pole Phoenix connectors and Quick-SAM mnt brckt (black or white)

Retail \$440.00..... ASL \$CALL

*Continuous / Program

COMMUNITY® #CPL SERIES SPEAKERS

CPL SPEAKERS... ENGINEERED FOR HIGH PERFORMANCE, WHATEVER THE INSTALLATION!



CPL speakers feature high power compression HF and Ferrofluid-cooled LFs in optimally ported trapezoidal enclosures with your choice of 90°x40° or 60°x40° HF coverage. Plus jumper-selectable passive or bi-amplified operating modes and built-in PowerSense™ DDP protection. Made compact and sturdy out of 13-ply Baltic birch and available in black, white or unfinished with built-in rigging points and barrier strip inputs for permanent installation.



#CPL42

12" 2-Way Speaker, 200w/500w*, 70Hz-18kHz, choice of HF Horn 85° x 35° or 55° x 40°, 58 lbs

Retail.....\$765.00.....CALLS

#CPL43

15" 2-Way Speaker, 200w/500w*, 50Hz-18kHz, choice of HF Horn 85° x 35° or 55° x 40°, 79 lbs

Retail.....\$832.00.....CALLS

#CPL46

15" 3-Way Speaker, 200w/500w*, 50Hz-18kHz, HF Horn 65° x 30°, 98 lbs

Retail.....\$1032.00.....CALLS

#CPL51

15" Subwoofer, 150w/375w*, 40Hz-250Hz, 74 lbs

Retail.....\$698.00.....CALLS

#CPL55

2x15" Subwoofer, 300w/750w*, 40Hz-150Hz, 110 lbs

Retail.....\$982.00.....CALLS

*Continuous / Peak

ELECTRO-VOICE® Sx SERIES SPEAKERS

#Sx100+E/#Sx300E



#Sx500



INNOVATION, PERFORMANCE, AND VERSATILITY

The Sx-Series Speakers are the most versatile, lightweight, high-performance systems in the industry. The state-of-the-art Sx-Series applies the superior sonic clarity and dynamic performance of EV's industry standard X-Array™ concert speakers to compact size cabinets, making them the systems of choice for small to mid-size applications. Five core models with numerous versions and accessories fit many applications.

#Sx100+E

200w/800w*, 12" 2-Way, 65° x 65°, Neutrik Speakon® connectors, flying and stand mount. Black or White 32 lbs.

List Price\$485 - \$510.....CALL FOR SPECIAL SALE!

#SxA100+

Self Powered, 12" 2-Way, 65° x 65°, 2 mic/line inputs, line-level out, stand mount. Black, 43 lbs.

List Price\$760.....\$ CALL

#Sx300E

300w/1200w*, 12" 2-Way, 65° x 65°, Neutrik Speakon®, flying and stand mount. Black or White 39 lbs.

List Price\$665 - \$680.....\$ CALL

#Sx500+

400w/1600w*, 15" 2-Way, 75° x 60° aimed down 10°, biamp option, Neutrik Speakon® connectors, flying and stand mount. Black, 69 lbs.

List Price\$990.....\$ CALL

#Sb122

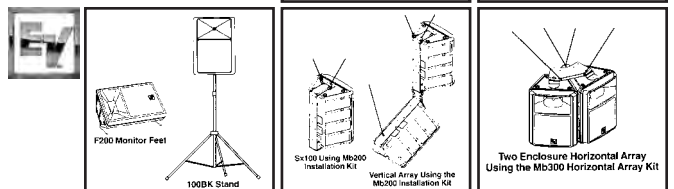
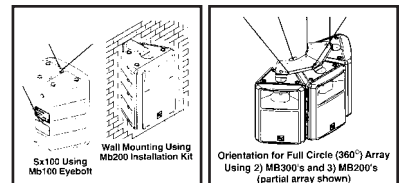
400w/800w*, 12" sub Bass Module, Neutrik Speakon® connectors, flying and stand mount. Black, 32 lbs.

List Price\$540.....\$ CALL

*Continuous / Program

EV® MOUNTING ACCESSORIES

RMD- EV's exclusive Ring-Mode Decoupling (RMD®), the same technology that gives EV X-Array™ concert touring series its incredibly clean and powerful performance, has been applied to all Sx-Series cabinets and components.



PRO-AUDIO AMPLIFIERS

#PLX2 SERIES AMPLIFIERS



QSC

FREE UPGRADE
to a FULL 6-YEAR Warranty on all
PLX2 and RMX Series Amps!
Visit www.qscaudio.com for details!

QSC® PLX2 SERIES POWERED AMPLIFIERS

QSC® is a leading manufacturer of high-quality professional power amplifiers. With eight lines of power amps to choose from, you can always find the perfect amp for every situation. ALPHA has been using QSC amps for more than 20 years and we continue to depend on their legendary quality and reliability!

QSC® PLX2 SERIES "02" and "04" MODELS FEATURE:

- Very light weight ("02" models, 21 lbs/9.5 kg, "04" models 13 lbs/5.9 kg)
- Cooling design exhausts hot air out the front, keeping the rack cool
- Clip limiters (Switchable/defeatable on 02 models)
- Speakon® NL-4 output connectors provide a positive-locking speaker connection
- Ch 1 output uses all 4 wires for single-cable connection to bi-amplified speakers
- 21-position front-panel gain controls for precise, repeatable amplifier adjustment
- Balanced XLR inputs w/ parallel TRS connectors accommodate all common input connectors
- Front panel LED power, clip, -10 dB, and signal present indicators for system monitoring and troubleshooting

QSC® PLX2 "02" MODELS ALSO FEATURE:

- Speakon® NL4 and binding post outputs
- Bridge and parallel mode LED indicators
- Switchable/defeatable 33 Hz infrasonic filters protect woofers from over-excursion damage
- 100 Hz high pass & low pass filters for bi-amping subwoofer & satellite systems w/ no need for external crossover

MODEL #	8Ω*	4Ω*	2Ω**	BRIDGED 4Ω*	BRIDGED 8Ω*	RETAIL	ASL SALE
PLX1104	325w	550w	n/a	n/a	n/a	\$769	\$CALL
PLX1804	600w	900w	n/a	n/a	n/a	\$919	\$CALL
PLX1802	330w	575w	900w	1800	1200	\$1099	\$CALL
PLX2502	450w	750w	1250w	2500	1500	\$1169	\$CALL
PLX3102	600w	1000w	1550w	3100	2100	\$1299	\$CALL
PLX3602	775w	1250w	1800w	3600	2600	\$1549	\$CALL

* 1 kHz, 0.1% THD, both channels driven // ** 1 kHz, 1% THD, both channels driven

#RMX SERIES AMPLIFIERS



QSC

QSC® RMX SERIES POWERED AMPLIFIERS

QSC® RMX SERIES FEATURES:

- Compact size-up to 2400 watts in 2 rack spaces
- Professional quality performance-incorporates road-proven QSC designs
- High-current toroidal transformers for greater two-ohm power and low noise
- Independent user-defeatable clip limiters reduce distortion
- Selectable low-frequency filters (30 Hz or 50 Hz) protect speakers and increase headroom
- Balanced 1/4" (6.3mm) TRS, XLR, and barrier strip inputs
- Binding post and Neutrik Speakon™ outputs
- Front mounted gain controls for easy access
- Signal and Clip LED indicators to monitor performance
- Independent DC & thermal overload protection on each channel automatically protects amplifier & speakers
- 3-year warranty plus optional 3-year extended service contract

MODEL #	8Ω	4Ω	2Ω	BRIDGED 4Ω	RETAIL	ASL SALE
RMX 850	200w	300w	430w	830w	\$430	\$CALL
RMX 1450	280w	450w	700w	1400w	\$550	\$CALL
RMX 1850HD	360w	600w	900w	1800w	\$650	\$CALL
RMX 2450	500w	750w	1200w	2400w	\$780	\$CALL
RMX 4050HD	850w	1400w	2000w	4000w	\$1650	\$CALL
RMX 5050	1100w	1800w	2500w	5000w*	\$2550	\$CALL

8Ω: 20Hz-20kHz, 0.01% THD • 4Ω: 20Hz-20kHz, 1% THD • 2Ω: 1kHz, 1% THD • *Bridged at 4Ω: 1kHz, 1% THD

Free Manuals Download Website

<http://myh66.com>

<http://usermanuals.us>

<http://www.somanuals.com>

<http://www.4manuals.cc>

<http://www.manual-lib.com>

<http://www.404manual.com>

<http://www.luxmanual.com>

<http://aubethermostatmanual.com>

Golf course search by state

<http://golfingnear.com>

Email search by domain

<http://emailbydomain.com>

Auto manuals search

<http://auto.somanuals.com>

TV manuals search

<http://tv.somanuals.com>