

TASCAM FW-1082

Cakewalk SONAR

Setup	2
Control Details	3
Additional Transport Keys.....	3
Transport Wheel	3
Special Keys.....	3
SElect Keys.....	3
Pan & EQ	4
Aux	4
F-Key Shortcuts.....	5
Arrow (Cursor) Keys	5
Master Fader Assignment	5
Bank Keys	6
Flip.....	6

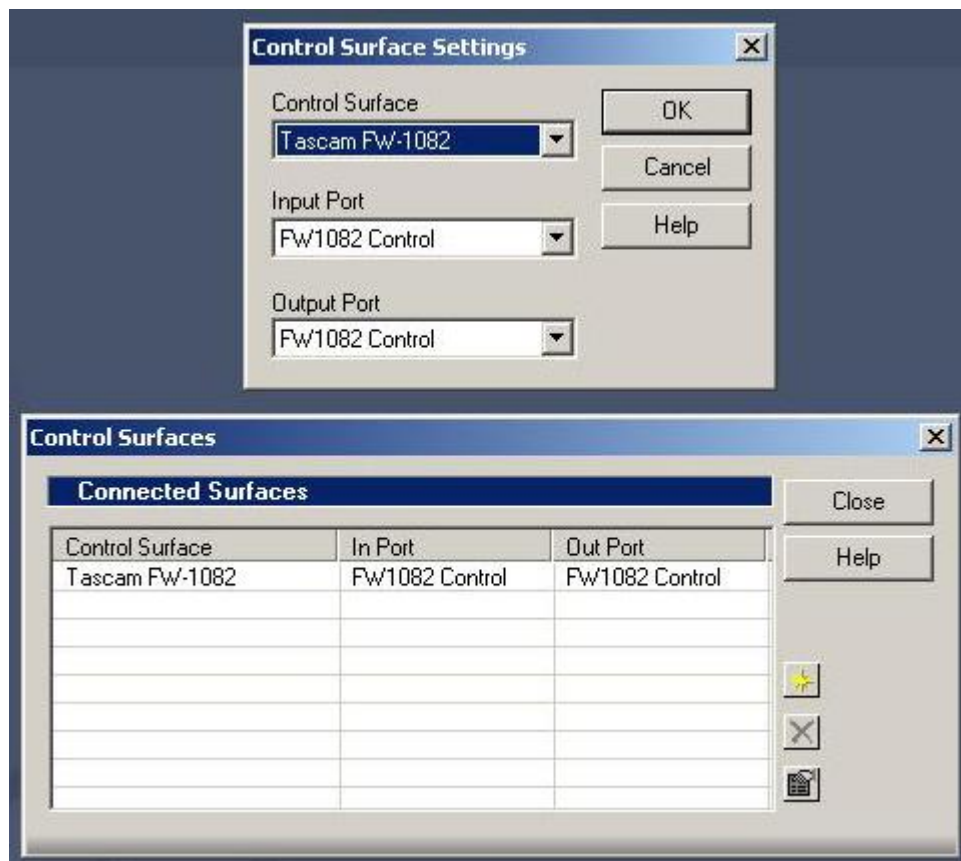
Setup

For Sonar compatibility, the FW-1082 comes with a control surface plug-in that is compatible with Sonar 3.1b & higher on Windows XP/SP1 & higher.

Install the plug-in from the CD-ROM.

Open the FW-1082 control panel and select Native Mode from the Control Protocol drop down menu under the Settings tab.

Next, open the Control Surfaces window under the Options menu in Sonar, add a new surface by clicking the yellow star, select the FW-1082 Control Surface then assign it to FW-1082 Control. Click OK.



Control Details

Generally the FW-1082's surface controls will function as expected, controlling their like parameters in Sonar. For example: Faders, Mutes, Solos and Transport Control will control those parameters in Sonar. Exceptions and specific details follow:

Additional Transport Keys

SET + REW = RTZ

SET + FF = Go to Tail

IN locates to the beginning of the selection area

OUT locates to the end of the selection area

SET + IN sets Punch IN point at the current playhead position

SET + OUT sets Punch OUT point at the current playhead position

SET + REC starts automation recording. A parameter must be armed for automation.

SHIFT + SET + IN sets Loop In Point at the current playhead position

SHIFT + SET + OUT sets Loop Out Point at the current playhead position

SHIFT + IN = sets Selection In Point at the current playhead position

SHIFT + OUT = sets Selection Out Point at the current playhead position

<<LOCATE locates to previous marker

LOCATE>> locates to next marker

SET + LOCATE>> = Drop Marker at the current playhead position

Transport Wheel

- Turn the data wheel clockwise to jog forward or counter-clockwise to jog backward.
- When the SHTL key is *off*, the data wheel moves the transport in one measure steps. Holding the SHIFT key reduces this to one-beat steps.
- When the SHTL key is *on*, the data wheel moves the transport in 1000-tick steps. Holding the SHIFT key reduces this to 100-tick steps.

Special Keys

SHIFT + PLAY toggles the Audio Engine On/Off

SHIFT + STOP Resets Sonar

SHIFT + any SOLO key will un-solo all tracks.

SElect Keys

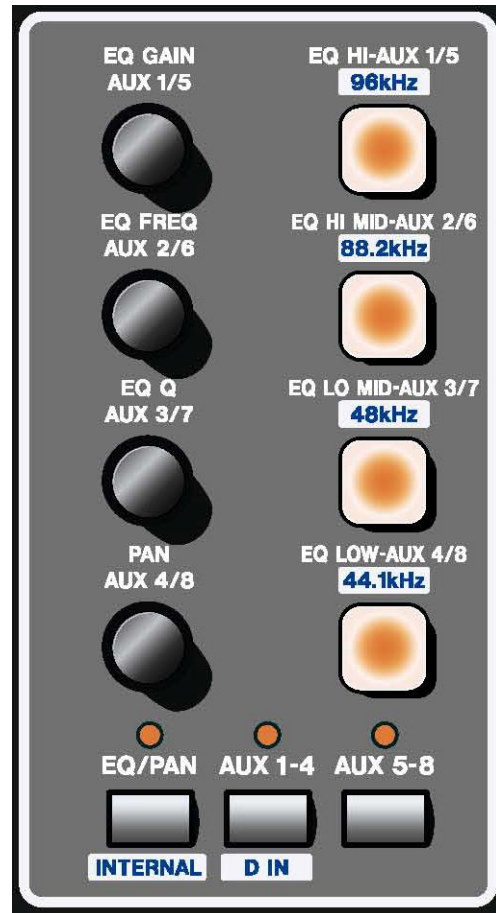
Pressing an FW-1082 SElect key alone will select that channel in Sonar. Holding SHIFT while pressing SElect sets that channel's fader to Unity in Sonar.

Holding the red REC key while pressing a SElect key will record-enable/disable that track.

Pan & EQ

When the EQ/PAN LED is illuminated:

- The lowest of the four encoders shown at right will control the Pan parameter of the SElected channel in Sonar.
- The encoders labeled as GAIN, FREQUENCY and Q will control those parameters of the EQ band selected by the illuminated buttons on the SElected channel in Sonar. Bands 1-4 of Sonar's Channel EQ is supported.
- The first time an EQ Band key is pressed, it selects the appropriate lower band, pressing the same button again selects a higher band. In this way, up to eight bands can be controlled. (*Note: The Sonar Channel Strip EQ does not support external control of more than four bands.*)
- Holding SHIFT while pressing an EQ band key will enable/disable that EQ band.
- Holding the SET key while pressing an EQ band key will toggle through the available EQ curve types.



Sonar can come with up to three types of EQ, depending on the version you have. The FW-1802 can be set to control any of the three:

- Hold the EQ/PAN key while pressing one of the top three EQ band buttons to select an EQ:
 - EQ HI = Channel Strip Sonitus
 - EQ HI MID = Plug-in Sonitus
 - EQ LO MID = Plug-in FX EQ

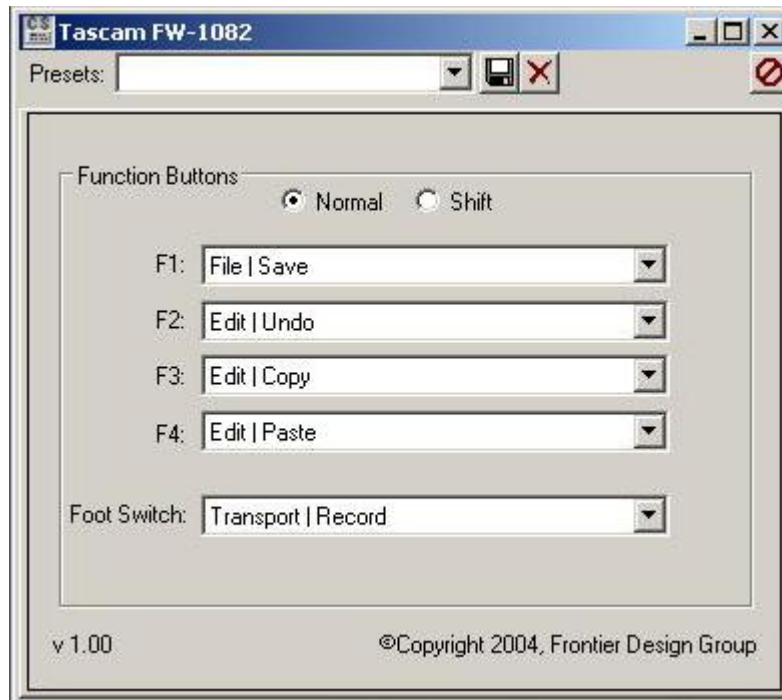
Aux

When AUX 1-4 or AUX 5-8 is illuminated:

- The four encoders control the level of Aux Sends 1 – 4 or Aux Sends 5 – 8 of the SElected channel in Sonar.
- Holding SHIFT while turning an encoder will adjust that Aux Send Pan.
- The four keys toggle Aux Send 1 – 4 enable/disable or Aux Send 1 – 5 enable/disable of the SElected channel in Sonar.
- Holding SHIFT while pressing one of the four keys toggles the Pre/Post state for that Aux Send of the SElected channel in Sonar.

F-Key Shortcuts

The functions of the F-Keys are programmable in Sonar by selecting TASCAM FW-1082 under the Tools menu. The screen below will appear where you can configure the F-Keys and save/load configurations.



Factory default settings are shown here:

F1 = Save

F2 = Undo

F3 = Copy

F4 = Paste

SHIFT + F1 = Enter

SHIFT + F2 = Redo

SHIFT + F3 = Cut

SHIFT + F4 = Delete

Arrow (Cursor) Keys

Use the Arrow keys to navigate around the on-screen menus, sub-menus and menu items.

Master Fader Assignment

You can switch the master fader assignment to the next or previous virtual main by holding down **SET** while you press either the **<BANK** or **BANK>** key. The **BANK LED** indicators will show which virtual Master the master fader is being assigned to.

Bank Keys

Press the BANK> key or the <BANK key, to shift the FW-1082's controls to the next 8 or previous 8 channels, respectively.

Hold SHIFT and press the BANK> key or the <BANK key, to shift the FW-1082's controls to the next or previous channel, respectively.

Hold SET and press the BANK> key to re-map all faders, mutes, solos and pans to Output Busses (Master, Groups, Aux Sends) in groups of 8. The corresponding BANK LED will flash when in this mode.

Hold SET and press the <BANK key to go to previous Output Busses or switch back to normal track operation.

Flip

Pressing EQ/PAN while holding SHIFT will toggle Flip mode. While in Flip mode, the faders can be used to control channel pan.

Free Manuals Download Website

<http://myh66.com>

<http://usermanuals.us>

<http://www.somanuals.com>

<http://www.4manuals.cc>

<http://www.manual-lib.com>

<http://www.404manual.com>

<http://www.luxmanual.com>

<http://aubethermostatmanual.com>

Golf course search by state

<http://golfingnear.com>

Email search by domain

<http://emailbydomain.com>

Auto manuals search

<http://auto.somanuals.com>

TV manuals search

<http://tv.somanuals.com>