



## ***MP3 Player MP-350***

---

### ***User Manual***

To ensure the smooth handling of your warranty please write the serial number of your device into the box. In the case of warranty you are expected to send it together with a copy of your invoice to your nearest TEAC sales representative.



### **Disposing of the Product**

Your device should not be placed in municipal waste. Please check local regulations for disposal of electronic products.

- Changes in specifications and features may be made without notice or obligation.

- Copyright © 2005-2006, TEAC Europe GmbH. All rights reserved. Edition: January 2006
- Company and product names provided herein are trademarks of their respective companies.

# Contents

FEATURES .....	4
CONTENT OF PACKAGE .....	4
IMPORTANT INFORMATIONS .....	5
INTRODUCTION OF CONTROLS .....	6
SYMBOLS ON SCREEN .....	7
INSTALLATION .....	7
Power Switch .....	7
Driver Software .....	8
Connecting to a PC .....	8
Disconnecting .....	9
Manual Installation of Driver Software .....	10
BASIC OPERATION .....	12
Menus .....	12
Switching On and Off .....	12
Charging .....	12
Playback .....	13
Previous/Next .....	13
Volume .....	13
Fast Forward/Reverse .....	13
Equalizer .....	13
Playback Mode .....	13
A-B Repeat Function .....	13
Voice Mode .....	14
Voice Recording .....	14
Deleting Files .....	15
FM Tuner .....	15
LINE-IN Recording .....	17
Edit ID3 Tags .....	18
Copying Files to MP-350 .....	19
Auto Power Off Time Setting .....	19
ScreenSaver .....	19
Memory Information .....	20
Folder Function .....	20
LOCK Function .....	20
Picture Browse .....	20
User-Customized ON/OFF LOGO .....	21
Preparing Pictures .....	21
Videos .....	23
Preparing Pictures Video Files .....	23
UPGRADING THE FIRMWARE .....	25
FORMATTING THE MEMORY .....	27
DEINSTALLING DRIVER SOFTWARE .....	28
TROUBLE SHOOTING .....	29
SPECIFICATION .....	30
WARRANTY .....	31

The TEAC MP-350 is one of the most powerful MP3 players on the market.


## FEATURES

- Playback of MP3/WMA files
- 65k COLOR OLED display
- Screen saver
- Touch screen
- USB 2.0
- FM tuner
- FM digital recording
- Line-In receptacle
- High-Quality voice recording
- No drivers for Win2000/XP/ME
- 1512MB/1GB portable USB data storage
- A-B Repeat playback.
- Equalizer: 5 modes: Normal, Rock, Jazz, Classic, Pop
- ID3 tag support with file name lyrics display (edit in advance needed)
- Built-in rechargeable lithium-ion battery
- Firmware upgradeable
- Menu based operation

## CONTENT OF PACKAGE

- MP3 player MP-350
- Operation overview
- User's manual (on CD)
- USB cable
- Earphone
- Neck strap
- Carrying case
- Installation CD + converting software for MTV
- Line-in cable
- USB charging adapter

## IMPORTANT INFORMATIONS

- If the unit is not used for a longer period of time please turn it off with the ON/OFF switch. Please charge the unit at least once within a month, in order that the battery won't be discharged.
- Do not use the unit in places that are extremely hot, cold, dusty, or humid.
- Avoid the unit being dropped.
- Recharge the battery in the following cases:
  - The battery display shows empty .
  - The keys will not operate normal.
  - The unit does not operate under normal conditions.
- We do not assume any liability arising out of improper operation or incidental damages.

### **Important information:**

In both power on and power off state, the player may be charged by the connection to PC via the USB line.

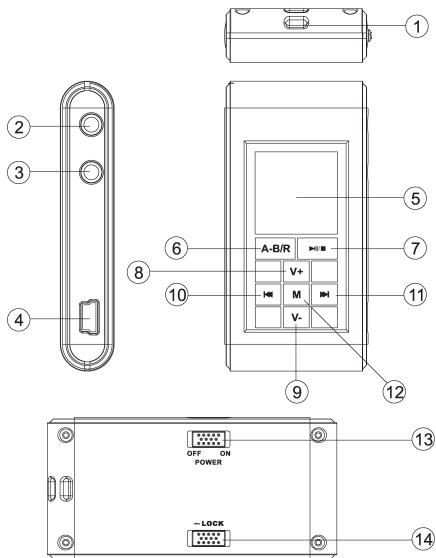
### **Important information:**

When abnormal situation occurred due to improper operation, push the POWER ON switch to OFF and then toward ON. The restart of the unit will return it to normal operation.

### **Important information:**

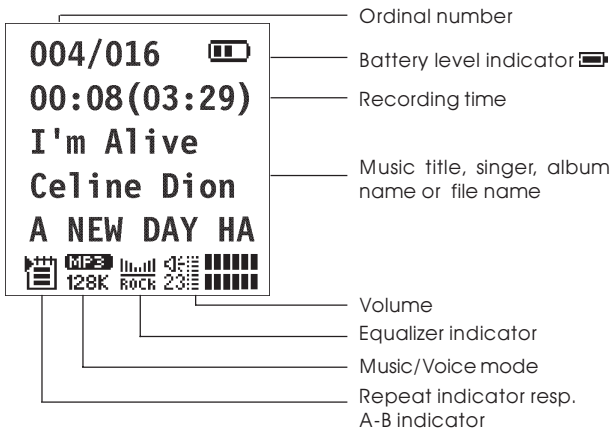
Please read and retain all the operating instructions before operating the unit, we do not assume any liability arising out of improper operation or incidental damages.

## INTRODUCTION OF CONTROLS



- |  |   |
|--|---|
| 1. Neck strap slot                       | 8. Volume + ( <b>V+</b> )               |
| 2. Earphone jack                         | 9. Volume - ( <b>V-</b> )               |
| 3. LINE-IN input jack                    | 10. <b>⏮</b> : previous,<br>Rewind RW   |
| 4. USB jack                              | 11. <b>⏭</b> : next,<br>Fast Forward FF |
| 5. OLED display                          | 12. <b>M</b> (Menu key)                 |
| 6. Repeat <b>A-B/R</b> Recording         | 13. <b>POWER ON/OFF</b>                 |
| 7. <b>▶/■</b> ON/OFF/Play/pause/<br>stop | 14. <b>LOCK</b>                         |

## SYMBOLS ON SCREEN



Repeat modes: and

Equalizer:

USB mode

## INSTALLATION

### Power Switch

Move the power switch to the ON position to turn on the player; and move to the opposite direction to turn it off.

**Note:** It's unnecessary to employ the power switch unless the player will not be used for a longer period of time or it works abnormally. Please keep the switch in the ON position in normal operation.

## Driver Software

### Windows98

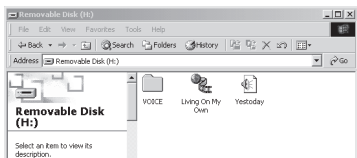
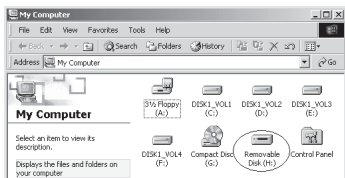
Under Windows98 drivers have to be installed. **Do not** connect the unit to your computer before the installation of the driver is finished. Insert the provided CD into your CDROM drive or download the driver from our web site. Double click on SETUP.EXE and follow the instructions on the screen. Connect the MP-350 and the PC with the provided USB cable **after** finishing the installation.

### Windows 2000/XP/ME

There is no need for a driver installation under Windows 2000/XP/ME. Under Windows 2000 service pack 3 has to be installed. When connecting the unit for the first time the New Hardware assistant is run. The MP-350 is recognized automatically and the respective drivers are activated.

## Connecting to a PC

The MP3 player is connected to a PC with the provided USB cable. You will see a mass storage device with removable media symbol in My Computer after the unit has been recognized by the operating system. The player's display shows





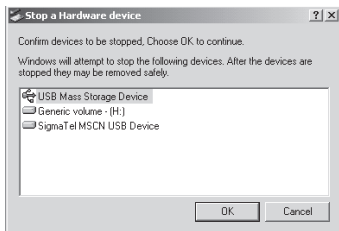
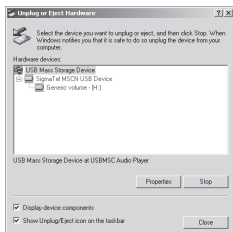
## Disconnecting

Prior to disconnect the unit has to be detached at the operating system. Otherwise data losses may occur. Proceed as follows:

1. Double click on the symbol Remove Hardware or Eject in the right lower corner of the task bar. (XP: Remove Hardware Safely"). See also the respective pictures:



2. Click on Stop resp. OK in the pop up window.



3. Click on OK.

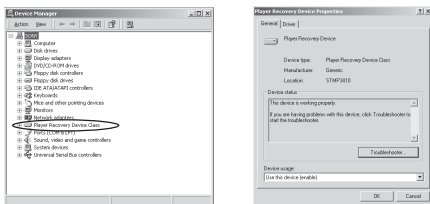


After carrying out the above steps the unit can be disconnected.

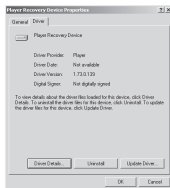
**Note:** The driver software may be not compatible to other MP3 products. If problems occur try to install the driver manually or call our hotline.

## Manual Installation of Driver Software

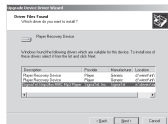
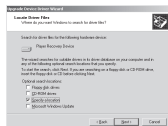
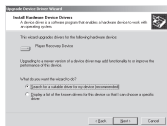
1. **Windows 2000/XP:** Click with the right mouse button on *My Computer>Properties>Device Manager*. Double click on *Player Recovery Device Class*.



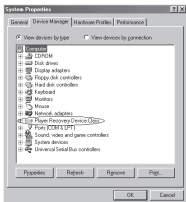
Now click on *Driver>Update Driver*.



Click on *Next* in any of the following windows.



2. **Windows 98:** After connecting the player to the PC use the right mouse button to click on *My Computer>Properties>Device Manager*. Please check if the entry of the player is shown with an exclamation mark or a question mark. Double click on the symbol of the MP-350 (Player Recovery Device Class). Now click on *Driver>Update Driver*. Click on *Next* in any of the following windows and on *Finish* to finish driver installation.




Now the driver is installed.

## BASIC OPERATION

### Menus

The unit is completely controlled by menus. The main menu and its sub menus are invoked with the key **M**. Main menu and its sub menus are left by invoking the option **Exit**. All menus are navigated with the keys **▶▶** and **◀◀**. To select an option **M** has to be pressed.

### Switching On and Off

Use **▶/■** to switch on. The unit is set to music mode after switching on. To switch off **▶/■** is pressed for more than 5 seconds until the message Continue Holding To Power Off and an activity bar  is shown and the unit is switched off.

### Charging

If the battery level icon on the LCD becomes , please charge the player. Two charging modes are provided as follows:

1. In both power on and power off state, the player may be charged by the connection to PC via the USB line.
2. In addition, it may also be charged via the provided charger.

#### Note:

If the battery is discharged, and the player is unable to turn on, it needs to be charged immediately.

If the battery is discharged, the LCD will display "Low Battery, it will off", and the MP player will turn off automatically. The charging process should be finished within 8 hours;

**Note:** It's advised to charge the player after **power off** (recommended), with a charging period of **3** hours.

## Playback

Short pressing of starts and pauses playback. A little bit longer pressing stops playback.

## Previous/Next

Short pressing of moves to previous files, to the next.

## Volume

If **V+** is pressed volume increases while longer pressing **V-** reduces it.

## Fast Forward/Reverse

Long press key to achieve fast forward function, the playing time of current track will increase quickly. Long press key to achieve fast rewind function, the playing time of current track will decrease quickly.

## Equalizer

Select **Settings** in the main menu and then **EQ**. Navigate with and through Normal Rock Jazz Classic and Pop .

## Playback Mode

Select **Settings** in the main menu and then **PlaySequence**. Navigate with and through Normal, Repeat One, Repeat All, Shuffle, and Shuffle All.

## A-B Repeat Function

During playback you press **A-B/R** to mark the beginning of the range to be repeated. The symbol is shown. The end of the range is marked by pressing **A-B/R** again. Now the symbol is shown and the marked section is permanently repeated. Press **A-B/R** key to cancel the set A-B repeat and start to play from the canceling position. Long press key to stop to play and cancel the A-B repeat.


## Voice Mode

Select **Voice** in the main menu for the voice mode. Under voice mode the display shows WAV. In voice mode WAV files are used. There is no support for ID3 tags (displaying lyrics information). This functionality is available:

- Playback
- Pause/stop/power off
- Previous/next, FF/REW
- Volume adjustment
- EQ modes setting
- Playback modes setting
- A-B repeat

## Voice Recording

### Quick Start


In **music** or in **voice** mode press **A-B/R** (about 2 sec) until  is displayed. Voice recording starts immediately after releasing the key. Recording format is mono ADPCM 8 kHz. Pressing **A-B/R** stops recording.

### Menu Controlled

Select **Record** in the main menu while in music or voice mode. The sub menu includes the options **Source**, **MO/ST (Mono/Stereo)**, **Encode**, **sRate**, **Record** and **Cancel**. **▶▶** and **◀◀** are used to navigate through the options and with the **M** button the selection is confirmed.

**Source** allows to select the audio source (**MIC** = microphone, **LineIn** for all other audio devices). **MO/ST** allows to toggle between **Mono** and **Stereo**. Use **Encode** to set the formats **IM ADPCM** (4 Bit), **MS ADPCM** (4 Bit) or **PCM** (16 Bit). **sRate** is used to set the sample rate to 8KHz/11KHz/16KHz/22KHz/32KHz. Pressing **M** with selecting **Record** starts recording while **Cancel** stops the whole process.

Select **MIC** and then select **Record** with **M**. The unit starts recording immediately. Pressing **A-B/R** stops recording.

Recording can be stopped and resumed at any time by pressing ►/■ (symbol ).

If recording with the integrated microphone Vxxx.WAV files are stored in the directory VOICE.

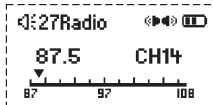
## Deleting Files

Select **Erase Files** in the main menu. Select the symbols for music, voice, or **Exit** with ►► or ◀◀. Confirm using the **M** button. At the time, the LCD will display "**Delete File?**", the song name and the confirmation letters **YES** and **NO**. Press ►► key or ◀◀ key to switch the confirmation letters circularly. Select **YES** and press **M** key to delete the current track and skip to the next track till reach to the last track and then exit Deletion mode; select **NO** key to cancel the Deletion operation and skip to the next track till reach to the last track and then exit Deletion mode. With **Exit** you exit the Delete function.

## FM Tuner

### FM receiving

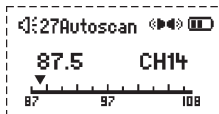
Select **FM Tuner** by ►► or ◀◀ button in the main menu and press **M** button to confirm.



### Auto-searching

**Searching for the next station:** press **M** button to enter searching mode, press and hold ►► button to start searching from low frequencies to higher frequencies.

**Auto-searching:** press ►/■ and **V+** button at same time, the unit begin to search stations and store them automatically. At most the unit can store 20 stations.



**Stop searching:** under auto-searching status, shortly press **A-B/R** button, the unit will stop searching automatically.

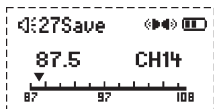
**Note:** Before searching or if no station was stored, the station will be defaulted at 87.5 MHz.

### Manual searching

Press **M** button to enter search mode. Each time you press **▶▶** or **◀◀** button the frequency will increase or decrease by 0.1 MHz.

### Storing

Under search status, press **M** key to shift to storing mode (Save), press **▶▶** or **◀◀** button to select the channel number, then press **▶|/■** button to confirm the storing and return to FM receiving. If you press **M** button, the unit will return to current channel and won't save the channel that has been found out.



**Note:** By those operations above, the files can only be stored temporarily. If you shut off the power directly, the file will be lost. So if you want to keep it, you must press and hold **▶|/■** button, until the unit is powered off normally.

### Previous/Next station

Under FM receiving status, press **◀◀** button to skip to the previous station, and press **▶▶** to skip to the next station.

### Forced mono

When the FM stereophonic effect sounds not very good, press **▶|/■** button to achieve forced mono function, which could lower the interference, press **▶|/■** button again, it return to stereo effect.

### Volume adjustment

Under FM playing, press **V+** or **V-** button to increase or decrease the volume. The indicator on the LCD will change accordingly.

### Quit FM Mode

Press and hold **M** button to quit FM mode.



### Recording of FM Transmissions

If a transmission should be recorded from the internal FM radio the **A-B/R** button has to be pressed. **Source** is set to **FM**. Set the respective values (see next section). After selecting **Record** recording of the actual transmission starts by pressing **M**. Pressing **A-B/R** stops recording.

Recording can be stopped and resumed at any time by pressing **▶/■** (symbol **■**).

If FM recording Fxxx.WAV files are stored in the directory FM.

### LINE-IN Recording

Connect LINE-IN with an external audio device (i.e. cassette recorder, CD player etc.). Select **Record** in the main menu. The sub menu includes the options **Source**, **MO/ST (Mono/Stereo)**, **Encode**, **sRate**, **Record** and **Cancel**. **▶▶** and **◀◀** are used to navigate through the options and with the **M** button the selection is confirmed.

**Source** allows to select the audio source (**MIC** = microphone, **LineIn** for all other audio devices). **MO/ST** allows to toggle between **Mono** and **Stereo**. Use **Encode** to set the formats **IM ADPCM** (4 Bit), **MS ADPCM** (4 Bit) or **PCM** (16 Bit). **sRate** is used to set the sample rate to 8KHz/11KHz/16KHz/22KHz/32KHz. Pressing **M** with selecting **Record** starts recording while **Cancel** stops the whole process.

Select **LineIn**, start the external audio device and select **Record** on the MP-350 with **M**. The unit starts recording immediately. Pressing **A-B/R** stops recording.

Recording can be stopped and resumed at any time by pressing **▶/■** (symbol **■**).

If line in recording Lxxx.WAV files are stored.

#### Note:

Check the recording volume for example with an earphone.

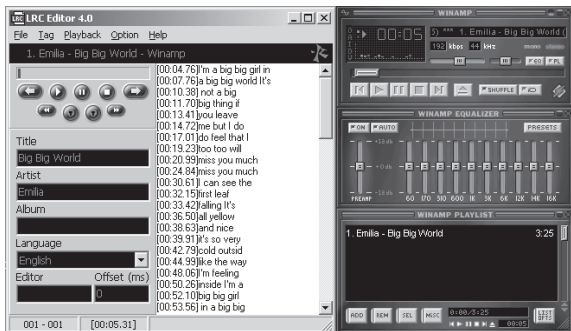
## Edit ID3 Tags

1. Open Winamp, load the MP3 file you want to edit and then open the LRC editor. You can key in the informations to the LRC editor's text frame or click Document/open and move the edited text to the editor, as follows:

- While the respective music title is reproduced, please click *add tag*. Note that the time tag will appear before the textual information.
- Fill in file name, singer and name of the album.
- Finally, click *Save As in File* in LRC to save the edited ID3 tag.

### Note:

Name the ID3 tag with the name of the respective MP3 file and copy both files to the unit. Then the according informations will be displayed on the screen while playing a song.



### Note:

1. The length of an ID3 tag shall not exceed 16 single-characters (i.e. English letters or number characters) or 8 double-characters (i.e. Chinese characters).
2. Characters as follows are not allowed to be used in title and singer information: \ / : \* ? " < > | [ ]

- The ID3 tag information of each song cannot exceed 1.4 Kbytes. Otherwise the exceeding characters are truncated.




## Copying Files to MP-350

Seen from PC's side the MP-350 is a normal mass storage device. File transfer therefore is possible in the common way in Windows Explorer.

### Important

Do not disconnect the unit while files are copied. Otherwise this may cause losses of data. You will find more details in section "Trouble Shooting".

The unit can only be disconnected if the screen shows

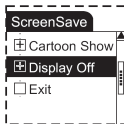
 Ready  or  indicate there is a file transfer in progress.

## Auto Power Off Time Setting

Select **Settings** in main menu and then **AutoPowerOff**. Navigate with **▶▶** and **◀◀** through the switch off options. Settable are time intervals of ∞ (inactivity), **1 Min**, **2 Min**, **5 Min**, and **10 Min** to switch off the unit. Confirm with **M**.

## ScreenSaver

Select **Settings** in main menu and then **Screen Save**. Navigate with **▶▶** and **◀◀** through the Screen Protection options.



- Smiley (Cartoon Show)

You can select ∞ (deactivate), **5 Sec**, **10 Sec**, **30 Sec** and **60 Sec**. until the screen saver is activated. Navigate with **:** and **9** and confirm with **M**.

- Black Screen mode (Display Off)

In Black Screen mode, press **:** key or **9** key to select the screen protection time (∞ (deactivate) or **30 Sec**). At last press **M** key to confirm and return to the previous menu.

**Note:** If screen protection mode is activated, it might also save the power and increase the service life of battery, in addition to protect the screen. It's recommended.

## Memory Information

Select **About** in main menu. The screen shows the total (**IntTotal**) and the free (**IntRemain**) available memory capacity. Press any key to return to main menu.

## Folder Function

Select **Folder** in the main menu. Use **◀◀** and **▶▶** to navigate through the folder. Folders can be opened by a short push on **▶|■**. Press **M** (short push) to move into the directory level above. The file in question is selected with **▶|■**. Press **M** a little bit longer to go back to play mode.

## LOCK Function

In any playback mode, push LOCK key in arrowhead direction to lock the player. In the LOCK mode, none of the functions can be used.

**Note:** If you switch on the player when lock key took effect, and you press **▶|■** to start the unit, the LCD displays the logo picture and the message "LOCKED" and power off automatically.

## Picture Browse

### Picture Browse function

Select **Picture** in main menu. Press **◀◀** key or **▶▶** key to select the picture to be viewed. In browsing, press **M** key to return to the main menu.

### Picture Deletion

Select **Picture** in main menu. Press **◀◀** key or **▶▶** key to select the picture to be deleted. Short press **A-B/R** key, at the time, the LCD will display "**Delete File?**", press **▶|■** key to delete the file.

### Picture Browse Setup

Select **Settings** in main menu and then **Pic Browser**. You can select  $\infty$  (no slide show, pictures have to be browsed manually), **2 Sec**, **5 Sec**, and **10 Sec**. Navigate with **▶▶** and **◀◀** and confirm with **M**.

#### Note:

The picture has to be saved into the **IMAGES** menu, otherwise, it would be unable to browse them.

### User-Customized ON/OFF LOGO

Users can set the logo by themselves: copy the picture to **USERLOGO** folder and name the start logo as **STARTLOGO** and the end logo as **ENDLOGO**.

**Note:** If no LOGO picture is copied into the USERLOGO folder, or the file names are not STARTLOGO and ENDLOGO the system will default the ON/OFF LOGO.

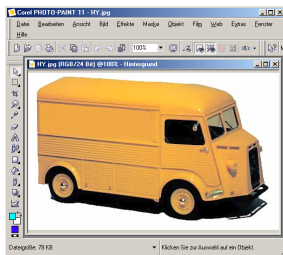
### Preparing Pictures

This unit only supports pictures with 96 x 96 pixels x 24 bit RGB BMP format. Any pictures which do not match this size cannot be displayed or will be displayed partially. So pictures must be resized before put into the unit.

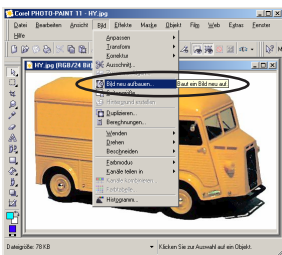
Run Corel Photo-Paint, Photoshop, or ACDsee etc. to open the picture you like to resize.

## Please view the Corel Photo Paint example

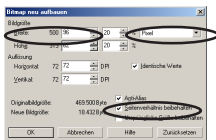
Loading the picture



Set the new picture size

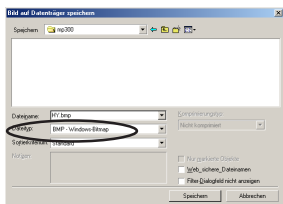


Set the new width of the picture to **96 pixels**.  
The height must **not** exceed 96 pixels.



Set the measurement unit to pixel.

Keep the width/height relation (aspect ratio).



It is **mandatory** to save the edited picture in **BMP** format.

Copy the resized picture into the **IMAGES** folder of the player.  
Then the picture can be displayed.

## Videos

### Look at Video Files

Select **Motion Video** in main menu. Press **⏮** key or **⏭** key to select the video file you want to play. In browsing, press **M** key to return to the main menu. Press the **▶/■** key to start, pause and stop the video. Select previous or next file by **⏮** or **⏭**.

### Delete video files

Select **Erase Files** in main menu. With **⏮** or **⏭** select **Motion Video**. Press **M** to confirm. The LCD displays **Delete File?**, the name of the file, **YES** and **NO**. Press **⏮** or **⏭** key to select **YES** or **NO**. Select **YES** and press **M** will delete the current file and skip to the next one and quit the delete mode until skip to the last one. Select **NO** to give up the delete operation and skip to the next file, and quite the delete mode until the last file. Press **Exit** to exit the delete mode.

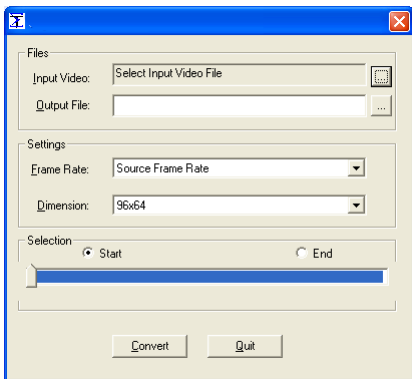
### Preparing Pictures Video Files

Transform the files (.avi/ .mpg/ .wmv) you want to play to .smv files by the convert tool on the CD. Use the program **video2smv.exe** on the provided CD.

Copy the converted .smv files to **MVIDEO** folder of the player.

Usage of convert tool:

1. Run the program: video2smv.exe.



2. Click the button on the right side of **Input Video**, and select the file you want to play. In the window enter the desired **File extension** at **Open**. The unit support .avi / .mpg / .wmv files.
3. Click the button on the right side of **Output File**, and select the output file and its output path.
4. Select **Frame Rate: Source Frame Rate** and Dimension: **96 x 64**.
5. Click **Convert** to start converting the files.

**Note:**

Suggest to choose "Frame rate: source frame rate" and "Dimension: 96 x 64".

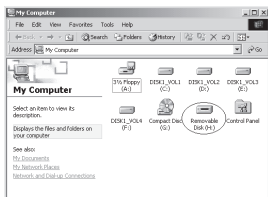
The system have to be installed Media Player 9 or above vesion.



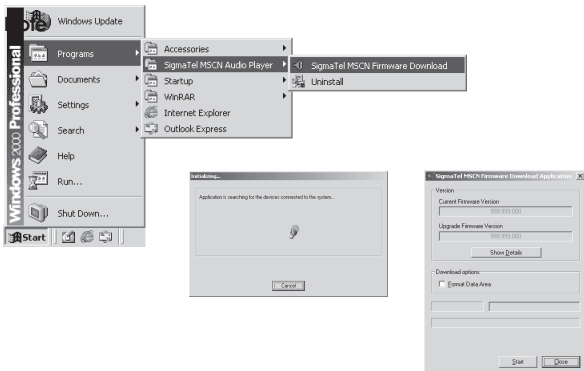
## UPGRADING THE FIRMWARE

Normally it is not necessary to upgrade the firmware. It should be carried out if the unit cannot be operated without problems.

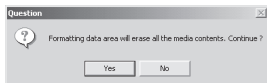
1. Connect the unit to the PC
2. Press **▶/■**, to switch the unit on. In *My Computer* a mass storage device is shown.



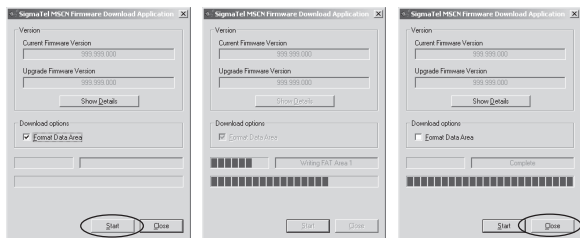
3. Further proceeding: *Start>Programs>SigmaTel MSCN Audio Player>SigmaTel MSCN Firmware Download*. After closing the windows the upgrade window is opened.



If the flash memory shall be formatted while upgrading firmware *Format Data Area* has to be selected. Click on Yes in the window.



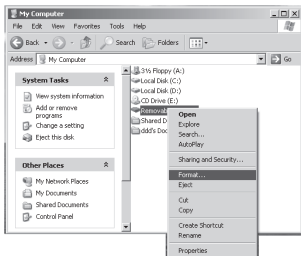
4. Click on *Start* and start the upgrading software as shown in the following.



5. After upgrading click on *Close*.

## FORMATTING THE MEMORY

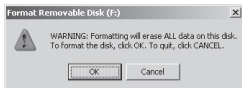
1. Press **▶|/■** after connecting the player to the PC.
2. Click with the right mouse button on *My Computer* and select *Formatting*.



3. The formatting windows opens.

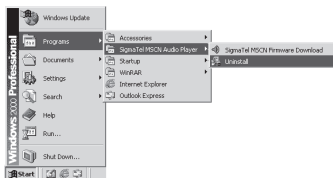


4. Click on *Start* followed by *OK*. Formatting of the flash memory is started.
5. After formatting click on *OK*.

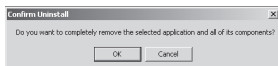


## DEINSTALLING DRIVER SOFTWARE

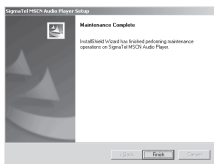
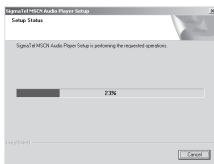
1. Disconnect the unit from the PC.
2. Click on *Start>Programs>SigmaTel MSCN Audio Player>Uninstall* or use *Control Panel>Explorer>Software*. Now the following window appears.



3. Click on *Cancel* if the driver should not be deinstalled.



4. Click on *OK* to start the deinstallation process. Follow the instructions on the screen.



5. Click on *Finish* to finish the deinstallation.

## **TROUBLE SHOOTING**

### **Why can't some MP3 files be played?**

MP3 Standard only includes: the songs in layer 3 of MPEG1, layer 3 of MPEG2 and layer 3 of MPEG2.5. Otherwise, songs won't be played in the player except they are transformed by the corresponding software.

### **Why doesn't the memory size displayed under the operation system match the figure on the tab?**

The software in the MP3 player takes up a small portion of the memory, which coincides with the corresponding standards.

### **More about WAV format**

This unit supports WAV files of IMA ADPCM format only. If you want to store WAV files of other format in this player, please set up a new folder and store the WAV files in it. Don't put the WAV files of other format into the root directory of the player or the folder VOICE. Otherwise the player may shut down when playing such WAV files.

### **What causes the MP3 player running slowly?**

Using or deleting files frequently over a long time will generate fragments in the flash memory like fragmentation of a hard disk. Fragmentation slows down the operating speed of the player.

### **What if the driver program of the MP3 player has been damaged?**

Normally this is caused by improper operation. For details, please refer to the Upgrade/Renew Software part.

### **What if the MP3 player works abnormally, i.e, shutting down?**

When abnormal situation occurred due to improper operation, push the POWER ON switch to OFF and then toward ON. The restart of the unit will return it to normal operation.

### **What if after a long non-use period the player cannot be turned on?**

To enlarge the life of the built-in battery, when the battery level is too low or in some abnormal situation (shut off), the lithium battery will be protected, so it cannot be turned on. You need to connect the MP3 player to a computer or the charger. It can be used after recharging.

### **The player plays music but does not respond to any key?**

LOCK is in LOCK position. Push LOCK key in the opposite direction of arrowhead.

## **SPECIFICATION**

Flash memory:	512MB/1GB
Interface:	USB2.0
Max recording time:	32/64Hr
Up to 8 hours playing time	
Dimensions:	70mm x 35mm x 13,5mm
Weight:	35g
Power source:	Built-in rechargeable lithium-ion battery
Memory medium:	built-in flash memory
File formats supported:	MP3 (Layer 3 of MPEG1, MPEG2, MPEG2.5), WMA
Microphone:	built-in capacitor microphone
Input:	LINE IN
Output:	double-channel earphone, impedance above 8 ohm.
Range of FM frequencies:	87.5 - 108 MHz
Operating temperature:	0°C - 40° C

# WARRANTY

Model \_\_\_\_\_ Serial No. \_\_\_\_\_

MP-350

Owner's name \_\_\_\_\_

Address \_\_\_\_\_

Dealer's name \_\_\_\_\_

Date of purchase \_\_\_\_\_

Dealer's address \_\_\_\_\_

## Warranty Period

TEAC Europe GmbH, hereinafter called TEAC, warrants this product against any defect in material and workmanship for two (2) years from the date of purchase by the original retail purchaser. According to the following terms this TEAC product will be repaired without charge of labor and materials by the authorized TEAC service stations, by the authorized TEAC dealers and/or their authorized service stations. The authorized TEAC service stations, the authorized TEAC dealers and/or their authorized service stations may decide whether the defective product will be repaired or replaced as a whole or partially. The TEAC dependences, the authorized TEAC service stations, the authorized TEAC dealers and/or their authorized service stations will also honour this warranty in the other EC and EFTA member states based on the terms in this warranty conditions.

## What is Covered and What is Not Covered.

Except as specified below, this warranty covers any defects in materials and workmanship of this product. The following are not covered by the warranty:

1. Damage to or deterioration of the external cabinet.
2. Any unit that has been altered or on which the serial number has been defaced, modified, or removed.
3. Damage, deterioration or malfunction resulting from:
  - (a) accident, misuse, abuse or neglect;
  - (b) failure to follow instructions supplied with the product;
  - (c) any shipment of the product. Any damage arising of transportation is the liability of the freight company. Any damage arising of transportation and any implicit and explicit risks are the liability of the freight company. This is expressly not a liability of TEAC;
  - (d) repair or attempted repair by anyone not authorized by TEAC to repair this product;
  - (e) causes other than product defects, including lack of technical skill, competence or experience of the user. Especially damages which may arise of incidental use respectively by improper ventilation,
  - (f) damage caused by improper or incorrect installation of software,
  - (g) periodic check-ups,
  - (h) maintenance respectively repair of parts due to normal wear and tear,
  - (i) adjustments or adjustments to the product in order to conform to different national technical or safety standards of any country other than the one for which the product was originally designed and manufactured.

## Who May Enforce the Warranty

This warranty may be enforced only by the original retail purchaser.

## What We Will Pay For

We will pay all labor and material expenses for items covered by the warranty. Payment of shipping and insurance charge is discussed in the next section of this warranty.

## How You Can Get Warranty Service

1. If your unit needs service during the warranty period, please contact the local authorized distributor for this product. If you are unable to locate such a distributor, please contact your TEAC facility at the address indicated below.
2. After identifying the nearest authorized service station for this product the product or any parts believed to be defective must be shipped freight and insurance prepaid to such service station, together with a copy of this warranty certificate and a copy of your sales receipt, showing the date of purchase. Please ensure to fill out the warranty certificate correctly (do not forget the serial number of the product). TEAC reserves the right to refuse the guarantee service if the documents are missing or incomplete in the understanding of this terms.

If the necessary repairs are covered by the warranty, and if you have sent the product or parts of it to the nearest authorized service station, the return freight and insurance charges will be prepaid.

**Please do not return your unit to the TEAC factory without our prior authorization (see also RMA form)**

## Limitations of Liability and Exclusion of Implied Warranties

Unless considered unenforceable or unavail under the applicable national law:

1. TEAC's liability for any defective product is limited to repair or replacement of the product, at TEAC's option and the option of authorized service stations, authorized dealers and their authorized service stations. No one is authorized to assume any greater liability on TEAC's behalf. TEAC shall not be liable for any damage to any other properties independent of their virtual or real nature especially there is no liability for any damage to any kind of software and/or any kind of databases caused by TEAC products. Furthermore TEAC is not liable for damages arising out of loss of use, loss of revenue or profits, or any other damages, whether incidental, consequential, or otherwise.
2. All implied warranties or conditions, including but not limited to warranties or conditions of merchantability and fitness for a particular purpose, hereby are excluded.

These warranty terms do not affect any statutory rights of consumers which were granted by the respective national laws.

**TEAC Europe GmbH**  
**DSPD**  
**Bahnstraße 12**  
**65205 Wiesbaden-Erbenheim**  
**Germany**

**TEAC Europe GmbH, DSPD:**  
Bahnstraße 12, 65205 Wiesbaden-Erbenheim, Germany  
Internet: [www.teac.de](http://www.teac.de)

**TEAC Service Center:**  
TEAC Service Centre Europe  
Hessenring 25  
64546 Mörfelden-Walldorf, Germany  
[www.teac.de/rma](http://www.teac.de/rma)

**Hotline:**  
+49 1805 55 83 79



## Free Manuals Download Website

<http://myh66.com>

<http://usermanuals.us>

<http://www.somanuals.com>

<http://www.4manuals.cc>

<http://www.manual-lib.com>

<http://www.404manual.com>

<http://www.luxmanual.com>

<http://aubethermostatmanual.com>

Golf course search by state

<http://golfingnear.com>

Email search by domain

<http://emailbydomain.com>

Auto manuals search

<http://auto.somanuals.com>

TV manuals search

<http://tv.somanuals.com>