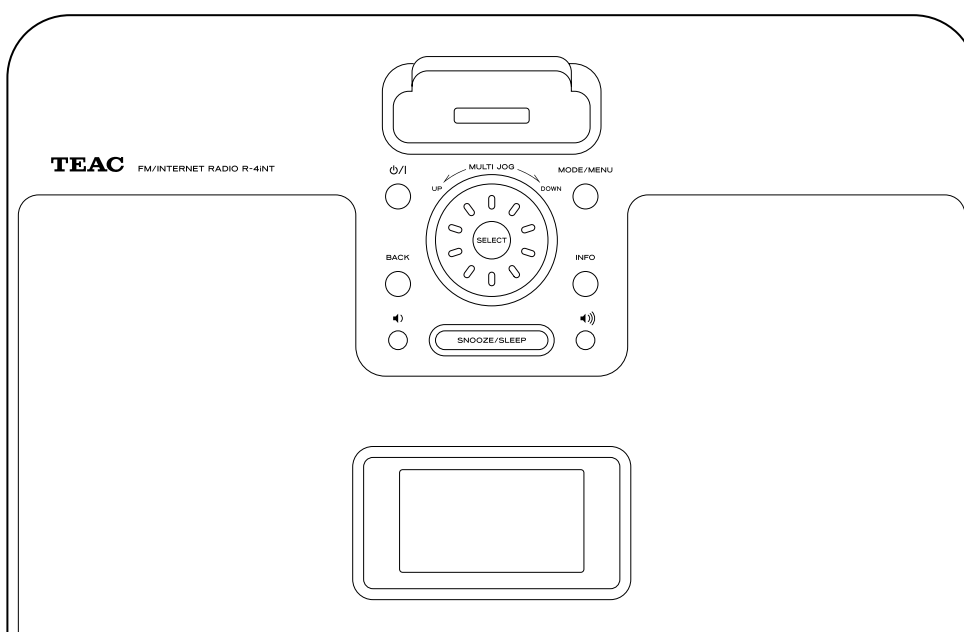


TEAC

R-4iNT

FM/Internet-radio with iPod Dock OWNER'S MANUAL





CAUTION
RISK OF ELECTRIC SHOCK
DO NOT OPEN



IMPORTANT SAFETY INSTRUCTIONS

To reduce the risk of electrical shock, fire, etc.:

- 1) Read these instructions.
- 2) Keep these instructions.
- 3) Heed all warnings.
- 4) Follow all instructions.
- 5) Do not use this apparatus near water.
- 6) Clean only with dry cloth.
- 7) Do not block any ventilation openings. Install in accordance with the manufacturer's instructions.
- 8) Do not install near any heat sources such as radiators, heat registers, stoves, or other apparatus (including amplifiers) that produce heat.
- 9) Do not defeat the safety purpose of the polarized or grounding-type plug. A polarized plug has two blades with one wider than the other. A grounding type plug has two blades and a third grounding prong. The wide blade or the third prong are provided for your safety. If the provided plug does not fit into your outlet, consult an electrician for replacement of the obsolete outlet.
- 10) Protect the power cord from being walked on or pinched particularly at plugs, convenience receptacles, and the point where they exit from the apparatus.
- 11) Only use attachments/accessories specified by the manufacturer.
- 12) Use only with the cart, stand, tripod, bracket, or table specified by the manufacturer, or sold with the apparatus. When a cart is used, use caution when moving the cart/apparatus combination to avoid injury from tip-over.
- 13) Unplug this apparatus during lightning storms or when unused for long periods of time.
- 14) Refer all servicing to qualified service personnel. Servicing is required when the apparatus has been damaged in any way, such as power-supply cord or plug is damaged, liquid has been spilled or objects have fallen into the apparatus, the apparatus has been exposed to rain or moisture, does not operate normally, or has been dropped.



CAUTION: TO REDUCE THE RISK OF ELECTRIC SHOCK, DO NOT REMOVE COVER (OR BACK). NO USER-SERVICEABLE PARTS INSIDE. REFER SERVICING TO QUALIFIED SERVICE PERSONNEL.



The lightning flash with arrowhead symbol, within an equilateral triangle, is intended to alert the user to the presence of uninsulated "dangerous voltage" within the product's enclosure that may be of sufficient magnitude to constitute a risk of electric shock to persons.



The exclamation point within an equilateral triangle is intended to alert the user to the presence of important operating and maintenance (servicing) instructions in the literature accompanying the appliance.

For U.S.A.

This equipment has been tested and found to comply with the limits for a Class B digital device, pursuant to Part 15 of the FCC Rules. These limits are designed to provide reasonable protection against harmful interference in a residential installation. This equipment generates, uses, and can radiate radio frequency energy and, if not installed and used in accordance with the instructions, may cause harmful interference to radio communications. However, there is no guarantee that interference will not occur in a particular installation. If this equipment does cause harmful interference to radio or television reception, which can be determined by turning the equipment off and on, the user is encouraged to try to correct the interference by one or more of the following measures:

- Reorient or relocate the equipment and/or the receiving antenna.
- Increase the separation between the equipment and receiver.
- Connect the equipment into an outlet on a circuit different from that to which the receiver is connected.
- Consult the dealer or an experienced radio/TV technician for help.

CAUTION

Changes or modifications to this equipments not expressly approved by TEAC CORPORATION for compliance will void the user's warranty.

- Do not expose this apparatus to drips or splashes.
- Do not place any objects filled with liquids, such as vases, on the apparatus.
- Do not install this apparatus in a confined space such as a book case or similar unit.
- The apparatus draws nominal non-operating power from the AC outlet with its POWER or STANDBY/ON switch not in the ON position.
- The apparatus should be located close enough to the AC outlet so that you can easily grasp the power cord plug at any time.
- The main plug is used as the disconnect device, the disconnect device shall remain readily operable.
- If the product uses batteries (including a battery pack or installed batteries), they should not be exposed to sunshine, fire or excessive heat.
- Caution should be taken when using earphones or headphones with the product because excessive sound pressure (volume) from earphones or headphones can cause hearing loss.

WARNING: TO PREVENT FIRE OR SHOCK HAZARD, DO NOT EXPOSE THIS APPLIANCE TO RAIN OR MOISTURE.

CAUTION

- DO NOT REMOVE THE EXTERNAL CASES OR CABINETS TO EXPOSE THE ELECTRONICS. NO USER SERVICEABLE PARTS ARE WITHIN.
- IF YOU ARE EXPERIENCING PROBLEMS WITH THIS PRODUCT, CONTACT TEAC FOR A SERVICE REFERRAL. DO NOT USE THE PRODUCT UNTIL IT HAS BEEN REPAIRED.

iPod is a trademark of Apple Inc., registered in the U.S. and other countries.

“Made for iPod” means that an electronic accessory has been designed to connect specifically to iPod and has been certified by the developer to meet Apple performance standards.

iPhone is a trademark of Apple Inc.

“Works with iPhone” means that an electronic accessory has been designed to connect specifically to iPhone and has been certified by the developer to meet Apple performance standards.

Apple is not responsible for the operation of this device or its compliance with safety and regulatory standards.

NXT is a trademark of New Transducers Ltd.

This product contains software. You have the non-exclusive, non-transferable right to use this software in object code form only, solely to operate this product.

Ownership of the intellectual property rights in the software in this product remains in the ownership of the party who provided it (or the respective licensor) and all of their respective rights are reserved.

You are strictly forbidden from modifying, translating, reverse engineering, decompiling, disassembling or using other means to discover the source code of the software in this product or otherwise replicate the functionality of the software in this product except to the extent that this restriction is expressly prohibited by applicable law.

Except where this is not possible in the territory where you purchased this product, we do not give any warranties in relation to the operation or performance of the software and neither we nor any of our suppliers or licensors shall be liable to you for indirect, special, incidental and consequential losses such as loss of profits arising out of your use of the software in this product.

These terms apply to any updates to the software you may apply to the product.

Portions of this software are included under license from RealNetworks, Inc. Copyright 1995-2007, RealNetworks, Inc. All rights reserved. RealAudio and the Real Enabled logo are trademarks or registered trademarks of RealNetworks, Inc.

MPEG Layer-3 audio coding technology licensed from Fraunhofer IIS and Thomson.

MPEG-4 HE-AAC audio coding technology licensed by Fraunhofer IIS.

<http://www.iis.fraunhofer.de/amm/>



This product is protected by certain intellectual property rights of Microsoft.

Use or distribution of such technology outside of this product is prohibited without a license from Microsoft.

Windows XP and Windows Vista are either registered trademarks or trademarks of Microsoft Corporation in the United States and/or other countries.

Content owners use Windows Media digital rights management technology (WMDRM) to protect their intellectual property, including copyrights. This device uses WMDRM software to access WMDRM-protected content. If the WMDRM software fails to protect the content, content owners may ask Microsoft to revoke the software's ability to use WMDRM to play or copy protected content. Revocation does not affect unprotected content. When you download licenses for protected content, you agree that Microsoft may include a revocation list with the licenses. Content owners may require you to upgrade WMDRM to access their content. If you decline an upgrade, you will not be able to access content that requires the upgrade.

If you download a software upgrade to your radio, additional licence terms may apply and these are available at <http://www.frontier-silicon.com/audio/eula.htm>

The information at this address can be replicated for use on your own website or portal but may be updated without notice.

Windows Media is either a registered trademark or trademark of Microsoft Corporation in the United States and/or other countries.

Contents

Thank you for choosing TEAC. Read this manual carefully to get the best performance from this unit.

Before Use	4
Remote Control Unit	5
Connection	6
Internet Connection.....	7
Identifying the Parts.....	8
Setup Wizard.....	10
System Settings.....	12
Setting the Clock.....	13
Basic Operation	14
AUX in	
Listening to an External Source	16
iPod/iPhone	
Getting Started with an iPod/iPhone	17
Listening to an iPod/iPhone	18
Internet Radio/Podcast	
Listening to the Internet Radio/Podcast.....	20
Settings the Internet Radio/Podcast Display	21
Internet Radio/Podcast Menu Operations.....	22
Radio Portal	23
FM	
Listening to the FM Radio.....	24
Preset Tuning.....	25
Pandora	
Listening to Music of Pandora	26
Music Player	
Setting up the Music Player.....	28
Listening to the Music Player	29
Sleep Timer	30
Wake Up Timer.....	30
Troubleshooting.....	32
Specifications	33

Before Use

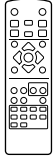
Read this before attempting any operations.

- When this unit is on, turning on a TV nearby might cause lines to appear on the TV screen, depending on the frequency of the TV broadcast. This is not a malfunction of the unit or the TV. If you see such lines, place this unit farther away from the TV set.
- Since the unit may become warm during operation, always leave sufficient space around the unit for ventilation. Make sure there is at least 8" (20 cm) of space above and at least 5 cm of space on each side of the unit. Do not place anything on top of the unit.
- The voltage supplied to the unit should match the voltage that is printed on the rear panel. If you are in any doubt regarding this matter, consult an electrician.
- Choose the installation location of your unit carefully. Avoid placing it in direct sunlight or close to a source of heat. Also avoid locations that are subject to vibrations or excessive dust, heat, cold or moisture.
- Do not place the unit on an amplifier or receiver or any other device that generates heat.
- Do not open the cabinet as this might result in damage to the circuitry or cause electrical shock. If a foreign object should get into the unit, contact your dealer or service company.
- When removing the power plug from the wall outlet, always pull directly on the plug. Never yank on the cord.
- Do not attempt to clean the unit with chemical solvents as they might damage the finish. Use a clean, dry or slightly damp cloth.
- Keep this manual in a safe place for future reference.

Remote Control Unit

Confirm the supplied standard accessories.

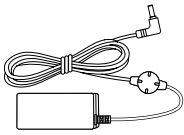
Remote control unit (RC-1239) x 1



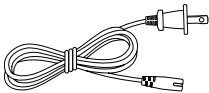
Batteries (AAA) x 2



AC adapter (PS-M1220) x 1



Power cord for AC adapter x 1



Stereo mini-plug cable x 1



Dock adapter x 4



Dock cover x 1



Owner's manual (this document) x 1

Warranty card x 1

Maintenance

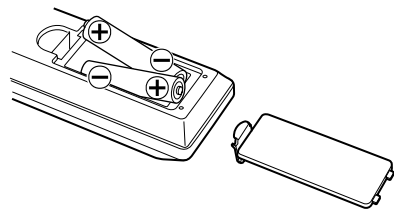
If the surface of the unit gets dirty, wipe it with a soft cloth or use diluted mild liquid soap. Never spray liquid directly on this unit. Apply cleaner to the cleaning cloth and wipe gently. Be certain to remove any excess completely. Do not use thinner, benzene or alcohol as they could damage the surface of the unit. Allow the surface of the unit to dry completely before using.

The included remote control allows this unit to be operated from a distance.

When using the remote control, point it towards the remote sensor on the front panel of the main unit.

- Even if the remote control unit is used within its effective range, operation by remote control might be impossible if there are any obstacles between the unit and the remote control.
- If the remote control unit is operated near other devices that generate infrared rays, or if other remote controls that use infrared rays are operated near the unit, this unit might operate incorrectly. The other devices might also operate incorrectly.

Battery Installation



1. Remove the battery compartment cover.
2. Insert two "AAA" (R03 or UM-4) dry batteries. Make sure that the batteries are inserted with their positive "⊕" and negative "⊖" poles positioned correctly.
3. Close the cover.

Battery Replacement

If the distance from the main unit that the remote control works effectively decreases, the batteries are probably exhausted. Replace the batteries with new ones when this happens.

For more information about the collection of batteries, please contact your local municipality, your waste disposal service or the place where you purchased them.

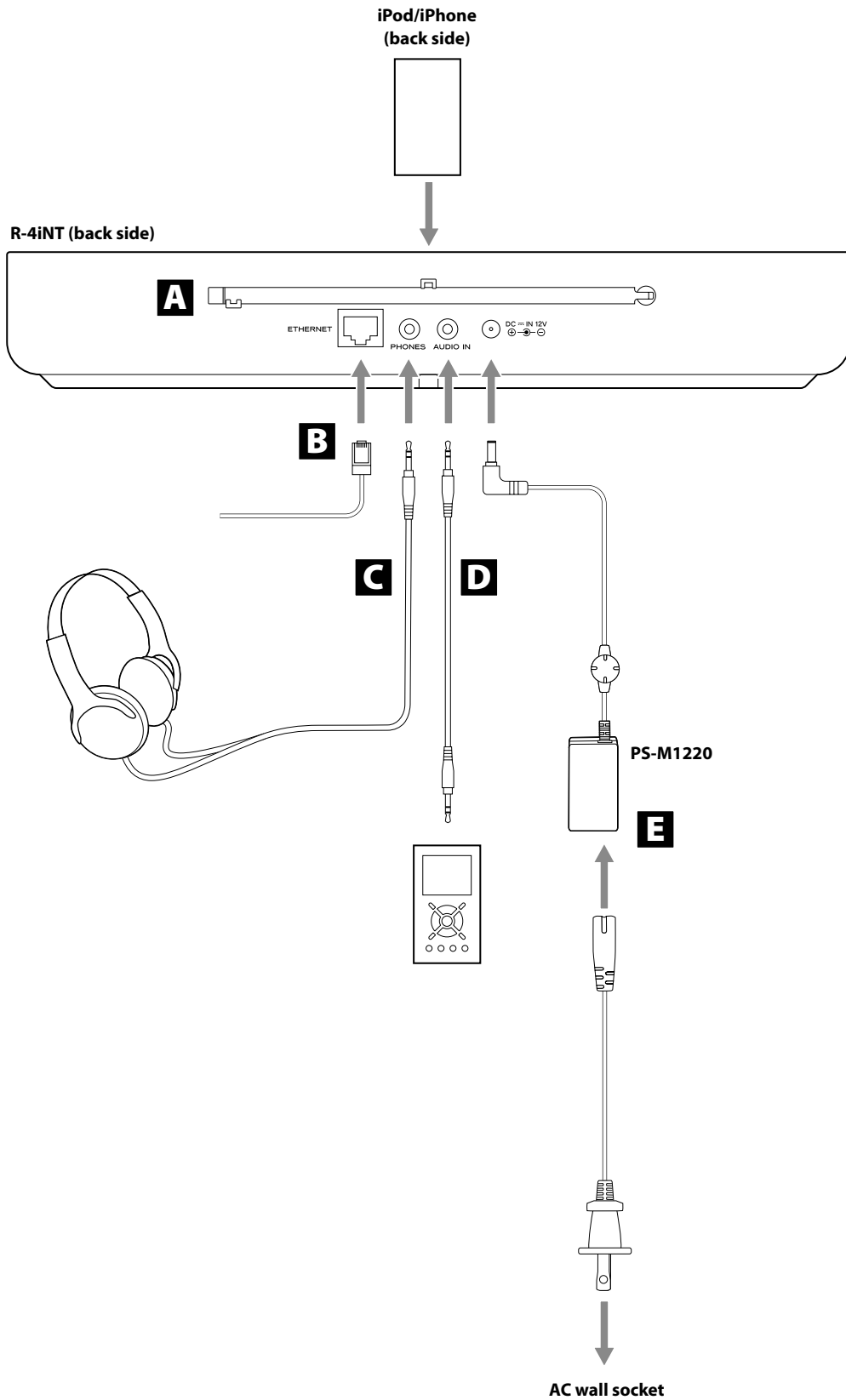
Precautions concerning batteries

- Be sure to insert the batteries with correct positive (⊕) and negative (⊖) orientations.
- Use batteries of the same type. Never use different types of batteries together.
- Both rechargeable and non-rechargeable batteries can be used. Refer to the precautions on their labels.
- If the remote control will not be used for a long time (more than a month), remove the batteries to prevent them from leaking.
- If the batteries leak, wipe away the leakage inside the battery compartment and replace the batteries with new ones.
- Do not use batteries of types other than those specified. Do not mix new batteries with old ones or use different types of batteries together.
- Do not heat or disassemble batteries. Never throw batteries into fire or water.
- Do not carry or store batteries with other metallic objects. The batteries could short circuit, leak or explode.
- Never recharge a battery unless it is confirmed to be a rechargeable type.

Connection

Caution:

- Turn off the power (set to standby) before making connections.
- Read the instructions of each device you intend to use with this unit.
- Be sure to connect each plug securely. To prevent hum and noise, do not bundle the connection cords.



A FM antenna

Extend fully and position for the best reception. Keep antenna away from metallic objects, electrical equipment and cords.

B ETHERNET port

To enjoy the Internet radio and the Music player function, connect the unit to the broadband internet network.

This unit has both a built-in wireless LAN antenna and a ETHERNET port for wired internet connection.

Before you continue, make sure that your wireless access point is enabled and connected to your broadband Internet, or your LAN cable is connected correctly. For details of the system working, we recommend you to read the operating instructions supplied with the wireless access point and LAN connecting.

C PHONES

To listen with headphones, first lower the volume level to the minimum. Then, connect the headphones plug into the PHONES jack, and adjust the volume by pressing the Volume buttons (◀/▶).

The speakers will make no sound when headphones are plugged in.

Caution:

Do not turn the unit on or off, or connect or disconnect headphones from this jack while wearing headphones. Very loud sound could be output from the headphones.

AVOID DAMAGING YOUR HEARING - Do not put on headphones until after plugging them in.

D AUDIO IN

You can connect a portable audio player to this jack.

E DC IN

Connect the supplied AC adapter (PS-M1220) to this jack. Then connect the connector of the power cord to AC adapter.

After all other connections are complete, connect the power cord's plug to the AC wall socket.

Caution:

Connect the supplied AC adaptor (PS-M1220). Do not use any AC adaptors other than the one included with this unit.

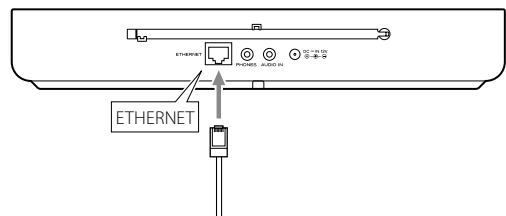
Using the wireless LAN

When you connect the power cord into the wall socket for the first time, select your region of the wireless LAN in "Setup wizard". (page 10)

- A wireless access point (Wi-Fi) must be connected to your broadband Internet, preferably via a router.
- If your wireless network is configured to use Wired Equivalent Privacy (WEP) or Wi-Fi Protected Access (WPA) data encryption, you need to know the WEP or WPA code to communicate with the network for getting the Internet radio.
- If your wireless network is configured for trusted stations you will need to enter the R-4iNT's MAC address into your wireless access point. To find the R-4iNT's MAC address, see page 12 to 13. ("System Settings" → "Network" → "View settings" → "MAC address")
- To enter the MAC address into your wireless access point, read the instructions supplied with the wireless access point.

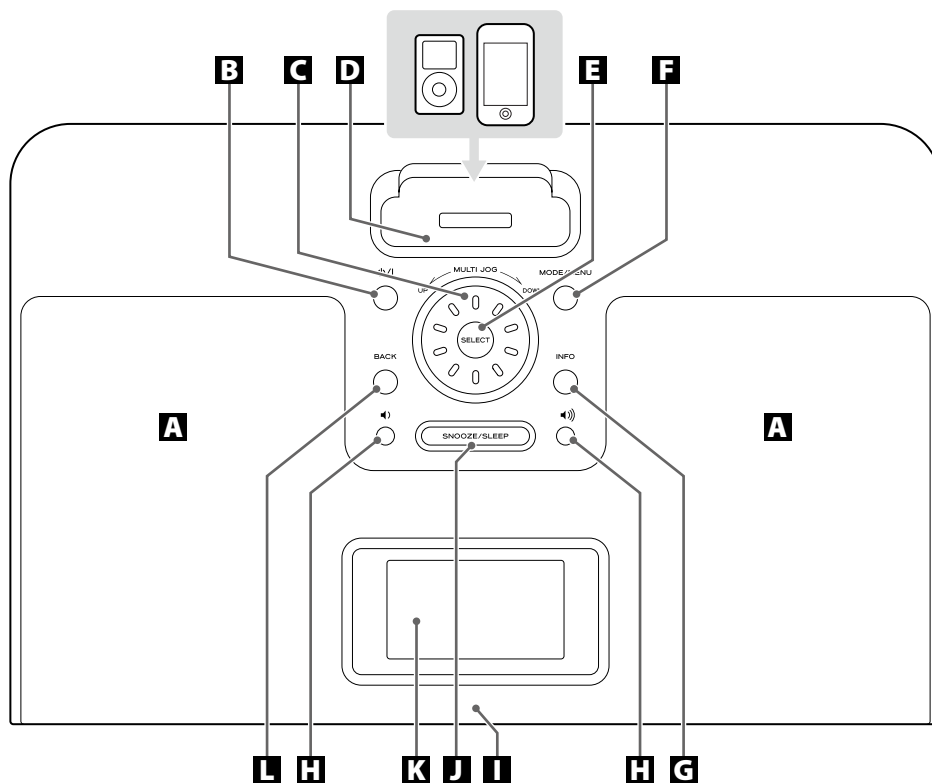
Using the LAN

To use a wired Internet connection, connect the ETHERNET port of this unit to the ethernet network using a commercially available ethernet cable.



- Make sure the internet environment is ready and the network settings is available for LAN (ADSL is highly recommended).
- To find the R-4iNT's MAC address, see page 12 to 13. ("System Settings" → "Network" → "View settings" → "MAC address")

Identifying the Parts



A Speakers (Stereo)

B Standby/On (⏻/⏻)

Use this button to turn the unit on and standby.

C MULTI JOG

Turn this knob to tune in FM stations or to select parameters in menus.

D Dock

Before use, insert an appropriate Dock adapter in the Dock (page 17).

Insert an iPod/iPhone into this dock.

Set the supplied Dock cover when it is not being used.

E SELECT

Use this button to enter your selection.

In iPod mode, use this button to confirm a selection in a menu.

This button has the same functions as the center button of the Click Wheel of an iPod.

In FM mode, use this button to start the automatic tuning.

F MODE

Use this button to select a source.

MENU

When in other than iPod mode, press and hold this button for more than 2 seconds to open menus.

In iPod mode, press this button for more than 2 seconds to go back to previous menu. This button is equivalent to the MENU button on your iPod/iPhone.

G INFO

In Internet radio or Music player mode, use this button to change the information on the display.

H Volume (◀/▶)

Use these buttons to adjust the volume level.

I Remote sensor

When operating the remote control unit, point it towards here.

J SNOOZE

After the TIMER ON time is reached, press this button repeatedly to select the temporary turn off time.

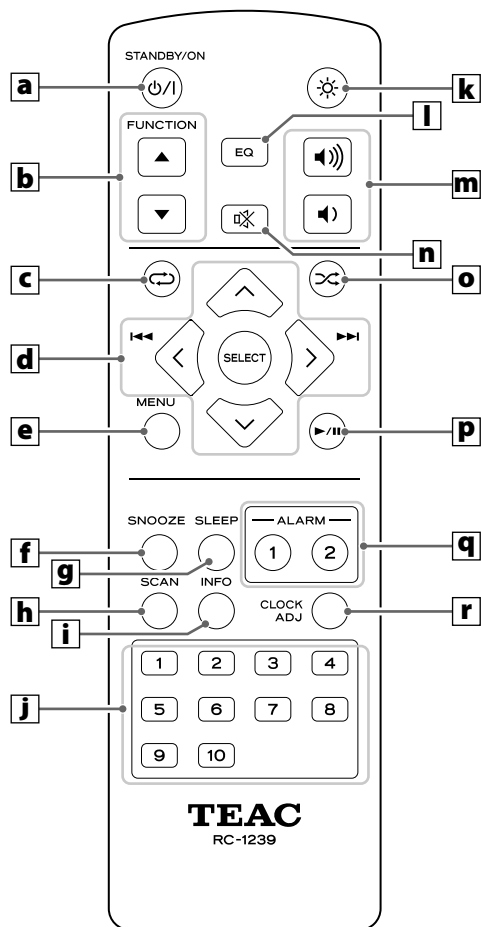
SLEEP

Use this button to set the sleep timer.

K Display

L BACK

When in other than iPod mode, use this button to return to the previous menu.



a STANDBY/ON (⏻/⏻)

Use this button to turn the unit on and standby.

b FUNCTION (▲, ▼)

Use these buttons to select a source.

c Repeat (↺)

In iPod and Music player mode, use this button to set the repeat function.

d Cursor buttons (▲/▼/◀/▶)

Use these cursor buttons to select parameters in menus. In FM mode, use the ▲/▼ buttons to tune in a station.

Skip/Search (◀◀/▶▶)

In iPod mode, use these buttons to skip to songs. Hold down these buttons to search for a part of a song.

SELECT

Use this button to enter your selection.

In iPod mode, use this button to confirm a selection in a menu. This button has the same functions as the center button of the Click Wheel of an iPod.

In FM mode, use this button to start the automatic tuning.

e MENU

When in other than iPod mode, press this button to open menus.

In iPod mode, press this button to go back to previous menu. This button is equivalent to the MENU button on your iPod.

f SNOOZE

After the TIMER ON time is reached, press this button repeatedly to select the temporary turn off time.

g SLEEP

Use this button to set the sleep timer.

h SCAN

In FM mode, use this button to start the automatic tuning.

i INFO

In Internet radio or Music player mode, use this button to change the information on the display.

j Number buttons

Use these buttons to save or select the preset stations.

k Dimmer (☀)

Use this button to change the brightness of the display.

l EQ (Equalizer)

Use this button to select a sound mode.

m Volume (◀/▶)

Use these buttons to adjust the volume level.

n Muting (⏻)

Use this button to mute the sound.

o Shuffle (⌘)

In iPod mode, use this button to start shuffle playback.

p Play/Pause (▶/⏻)

In iPod and Music player mode, use this button to start or pause playback.

q ALARM 1, ALARM 2

Use this button to enter the wake up timer setting mode.

r CLOCK ADJ

Use this button to enter clock adjustment mode.

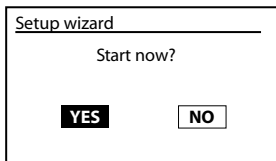
Note:

To simplify explanations, instructions in this manual might refer to the main unit or remote control only. In such cases, the same controls on the remote control and main unit will operate similarly.

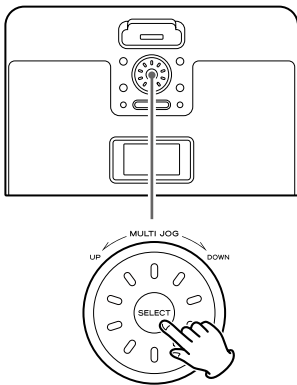
Setup Wizard

When you connect the power cord into the wall socket and turn on the unit for the first time, the Setup wizard appears on the display.

Follow the steps below to set the clock, the update method, your local wireless LAN region and the network SSID (Service Set ID).

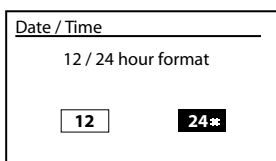
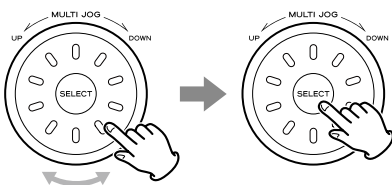


1 Press the SELECT button to select "YES".



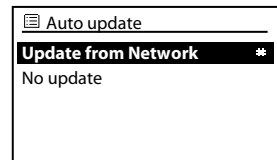
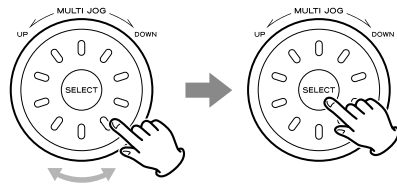
- If you want to cancel the Setup Wizard, turn the MULTI JOG to select "NO", and then press the SELECT button.

2 Turn the MULTI JOG to select the hour format, and then press the SELECT button.



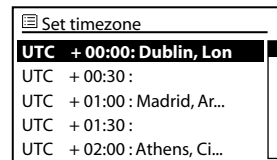
- The current setting is marked with a "※".
- If you want to return to the previous menu, press the BACK button.

3 Turn the MULTI JOG to select the auto update method of the clock, and then press the SELECT button.



When you select "Update from Network"

Turn the MULTI JOG to select your local time zone, and then press the SELECT button.

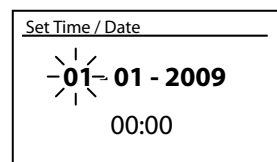


Turn the MULTI JOG to select the daylight savings status, and then press the SELECT button.



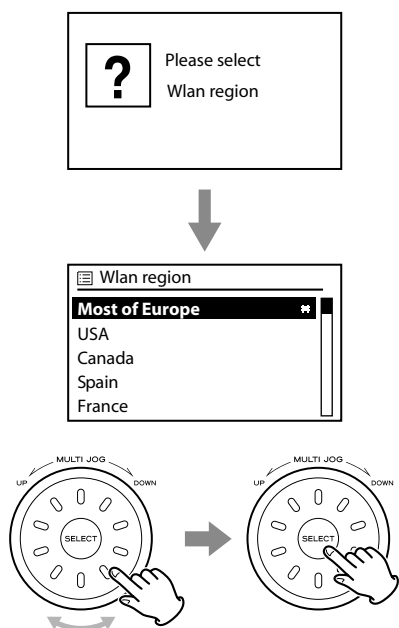
When you select "No update"

Turn the MULTI JOG to to set the current day, and then press the SELECT button.

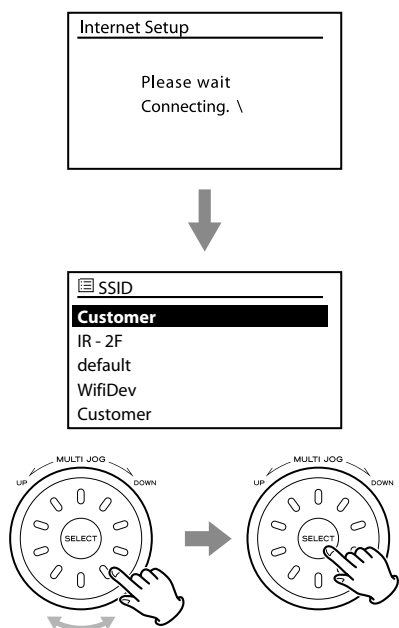


Repeat step above to set "month", "year", "hour" and "minute".

4 Turn the MULTI JOG to select your local wireless LAN region, and then press the SELECT button.



5 Turn the MULTI JOG to select your network (SSID), and then press the SELECT button.



- If the unit finds more than one network, turn the MULTI JOG to select your favorite one, and then press the SELECT button.

When your network is not configured to request a password (WEP/WPA)

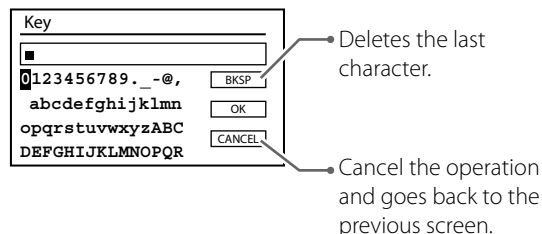
The unit will connect to the network.

When a WEP/WPA key (password) is required

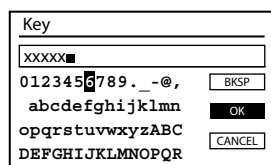
The unit will ask you to input the WEP/WPA key and display the password entry screen.

How to input characters

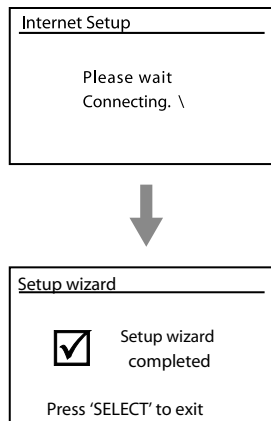
1. Turn the MULTI JOG to select the character you want to input. And then, press the SELECT button to input the selected character.



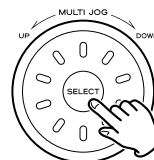
- WEP/WPA pass codes are case-sensitive.
2. Turn the MULTI JOG to select "OK" after selecting the final character of your password.



3. Press the SELECT button.



6 Press the SELECT button to exit the Setup wizard.



The setting is completed.

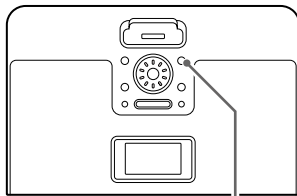
- You can re-enter to the Setup wizard from the System settings after the first time (see next page).

System Settings

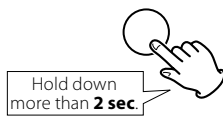
This chapter describes how to use the "System settings".

Most settings and adjustments are required to be set when you first use the unit.

- 1 In other than iPod mode, press and hold the MENU button for more than 2 seconds.**

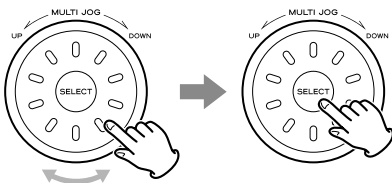


MODE/MENU

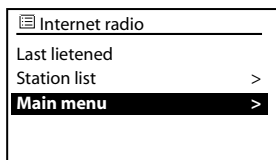


- In iPod mode, you can not enter the System settings. Press the Mode button to change the mode, and then press and hold the MENU button for more than 2 seconds.

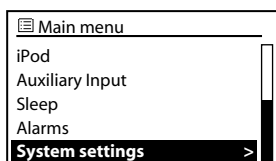
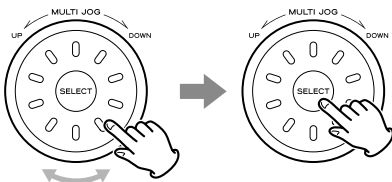
- 2 Turn the MULTI JOG to select "Main menu", and then press the SELECT button.**



Example: In the Internet radio mode

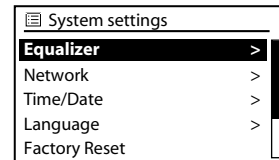
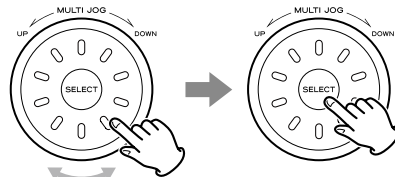


- 3 Turn the MULTI JOG to select "System settings", and then press the SELECT button.**

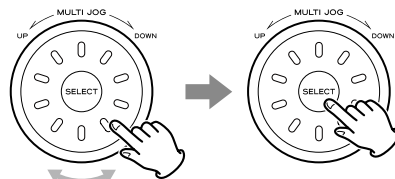


- If you want to return to the previous menu, press the BACK button.

- 4 Turn the MULTI JOG to select the item you want to change, and then press the SELECT button.**



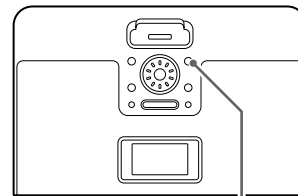
- 5 Turn the MULTI JOG to change the setting, and then press the SELECT button.**



Repeat steps **4** and **5** as required.

- The current setting is marked with a "⚙".
- See "Available menu items and settings" below for Individual menu functions.
- If no button is pressed for more than 10 seconds, current menu will be canceled and return to the previous display.

- 6 Press and hold the MENU button to exit the setup mode.**



MODE/MENU



- Settings are stored even when power is turned off and the unit is unplugged.

Available menu items and settings

Equalizer

See "Equalizer" on page 15.

Network

Enable you to scan again for connection to another wireless network, or to manually configure the network parameters.

Internet Wizard

Proceeds to the internet wizard.

PBC Wlan setup

Setting the Wi-Fi Protected Setup (WPS) between the wireless access point and R-4iNT.

Select WPS on the wireless access point, and then press the SELECT button on the R-4iNT.

Setting the Clock

View settings

Displays the current network settings. You can check the setting of following items:

Active connection	MAC address
Wlan region	DHCP
SSID	IP address
Subnet mask	Gateway address
Primary DNS	Secondary DNS

Wlan region

Selects the region of the wireless LAN.

Manual settings

Sets the Internet connection manually. Follow to navigate of the menus.

Network profile

Displays the network profile.

Time/Date

Set Time/Date

To adjust the clock manually, use this menu. (See "Setting the Clock" on the right).

Auto update

Select the auto update method.

Set format

Select the hour format.

When you select "Auto update" to "Update from Network", following menus appear.

Set timezone

Select your local time zone.

Daylight savings

Select the daylight savings status "ON" or "OFF".

Language

Select the desired language for display menus from the following:

English, Danish, Dutch, Finnish, French, German, Italian, Norwegian, Polish, Portuguese, Spanish, Swedish, Turkish

- If the unit is set to a foreign language and you find it impossible to read the menu settings, you can restore all the factory default settings, and the menus will appear in English again (all other settings will be cleared).

Factory Reset

If you want to restart from a known set of options, restore the unit to the factory settings.

To reset the setting, select "YES".

- The unit completely erase all setting such as radio preset, WEP/WPA codes and user setting.

Software update

Auto-check setting

Selects software update automatically or manually.

Check now

Executes the software update.

Setup wizard

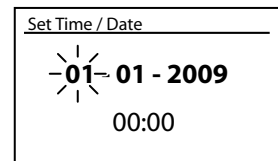
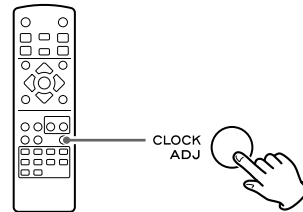
See "Setup wizard" on page 10.

Info

Displays the current software version and Radio ID.

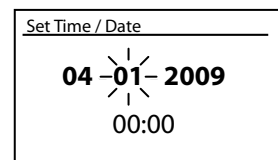
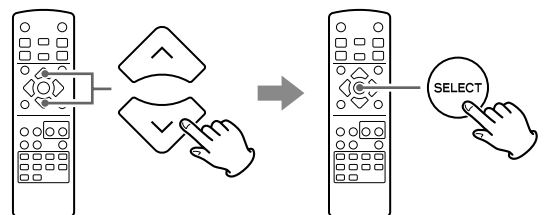
If you set "Main menu" → "System settings" → "Time/Date" → "Auto update" to "No update", the clock need to be adjusted manually.

1 Press the CLOCK ADJ button.



The "day" value blinks.

2 Press the Cursor button (▲/▼) to set the current day, and then press the SELECT button.



The "month" value blinks.

- You can also use the MULTI JOG instead of the Cursor button (▲/▼).

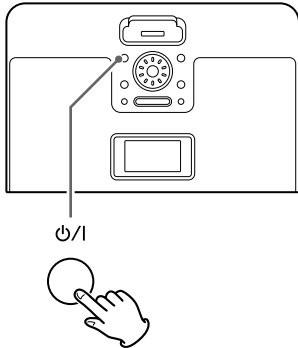
3 Repeat step 2 to set "month", "year", "hour" and "minute".

When "minute" is set, the clock starts.

Basic Operation

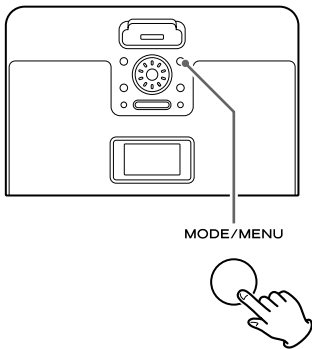
This chapter describes the basic operation which is available in every mode.

1 Press the Standby/On button (⏻/⏻) to turn the unit on.



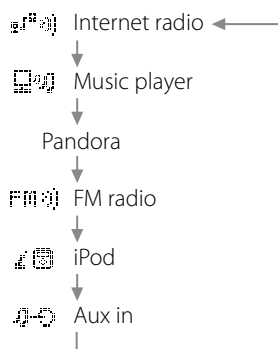
- The unit turns on with the source that was last selected.

2 Press the MODE button repeatedly to select a source.



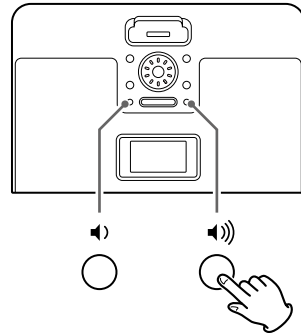
The selected source is shown on the display.

Each time the MODE button is pressed, the source changes as follows:



- You can also use the FUNCTION buttons (▲/▼) on the remote control unit to select a source.

3 Play the source, and adjust the volume using the Volume button (◀ or ▶).

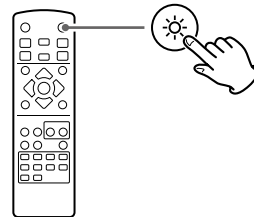


The volume can be adjusted from Muted (00) to Max (20). To reduce or turn up the volume continuously, hold down the Volume button (◀ or ▶).

- Press the Standby/On button (⏻) to put the unit in the standby mode when it is not being used.

Dimmer

You can change the brightness of the display.



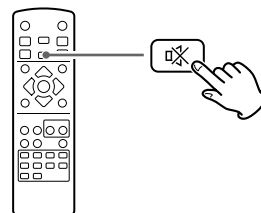
Use the DIMMER button (☼) to set the brightness one of three levels.

Full brightness
Medium brightness
Minimum brightness

- Setting is cancelled if the Standby/On button (⏻) is pressed.

Muting

You can mute the sound temporarily.



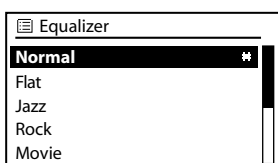
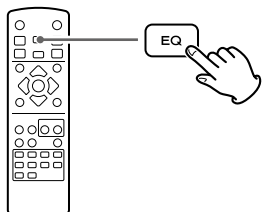
To mute the sound, press the Muting button (⊘). Press the Muting button (⊘) again to restore the sound.

- The Muting indicator (⊘) appears on the display while muting is engaged.
- If you change the volume when the sound is muted, it will be unmuted.

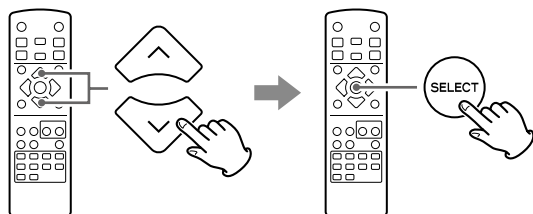
Equalizer

You can adjust the sound according to the genre of music or your taste.

1 Press the EQ button to enter the equalizer mode.



2 Press the Cursor button (^ / v) to select a preset equalizer and then press the SELECT button.



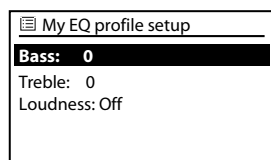
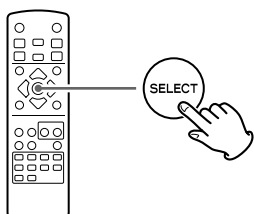
- The current setting is marked with a " * ".

Normal	Equalizer is off.
Flat	Flat sound quality with the bass adjustment.
Jazz	Suitable for jazz music.
Rock	Provides a heavy powerful sound; suitable for rock music.
Movie	Suitable for movie.
Classic	A balanced sound; suitable for classical music.
Pop	Emphasizes vocal tones; suitable for popular music.
News	Suitable for News.
My EQ	Equalizer you set by yourself.
My EQ profile setup	Set the equalizer by yourself (see below).

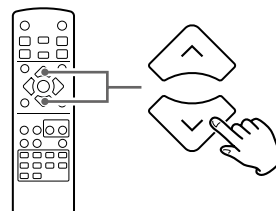
Setting the equalizer by yourself

When you select "My EQ" in the equalizer mode, set the profile of "My EQ" as follows:

1 Select "My EQ profile setup" in the equalizer mode (see above), and then press the SELECT button.

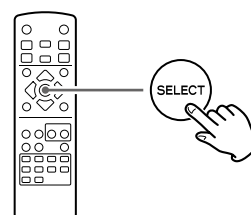


2 Press the Cursor button (^ / v) to select a item.

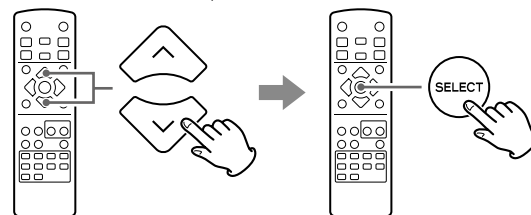


When you want to adjust "Bass" or "Treble".

Press the SELECT button.



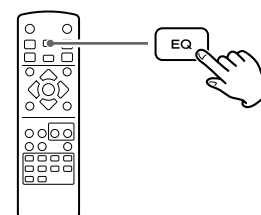
Press the Cursor button (^ / v) to adjust the value of the selected item, and then press the SELECT button.



When you want to adjust "Loudness".

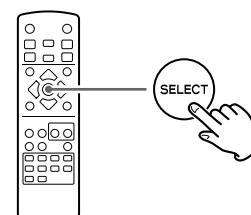
Press the SELECT button to change "On" and "Off".

3 Press the EQ button.



"Save changes?" appears on the display.

4 Press the SELECT button to select "YES".



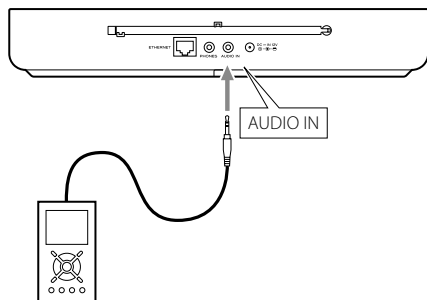
Your customized equalizer is saved to "My EQ". And "My EQ" is selected as a current setting.

- If you want to cancel, Press the Cursor button (< / >) to select "NO", and then press the SELECT button.

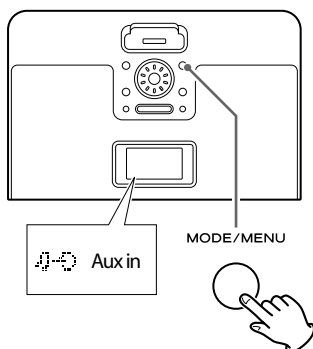
Listening to an External Source

In addition to connecting other audio devices, you can use the AUDIO IN to listen to an iPod that has no dock connector or when an appropriate Dock adapter is not available.

- 1** Connect the PHONES jack or audio output jack of a portable audio player to the AUDIO IN jack of the R-4iNT using the supplied stereo mini-plug cable.

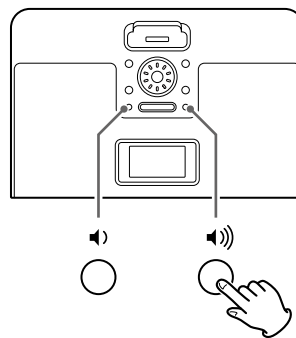


- 2** Press the MODE button repeatedly to select "Aux in".



- You can also use the FUNCTION button (▲/▼) on the remote control unit to select "Aux in".

- 3** Play the source, and adjust the volume using the Volume button (◀ or ▶) of the R-4iNT and of the audio player.



- When using the headphones jack of a device, if you do not adjust its volume, you might not hear any sound from the R-4iNT.
- Turning the volume of the connected device up too high might cause the sound from your R-4iNT to be distorted. In this case, reduce the volume of the device until the distortion stops and then adjust the volume level of the R-4iNT to a comfortable listening level.

Getting Started with an iPod/iPhone

To play your iPod/iPhone through the R-4iNT, you must first insert the Dock adapter for your model of iPod/iPhone.

1 Select the Dock adapter that fits your iPod/iPhone.

#7: iPod Photo (40 GB/60 GB),
iPod with Click Wheel 40 GB,
iPod with color display (iPod Photo) 40/60 GB,
iPod with color display 60 GB,
iPod with video 60/80 GB,
iPod Classic 160 GB (2007) 160 GB

#9: 5G iPod with video (30 GB)
iPod with video 30 GB,
iPod with video U2 Special Edition 30 GB,
iPod Classic 80/120 GB,
iPod Classic 160 GB (2009) 160 GB

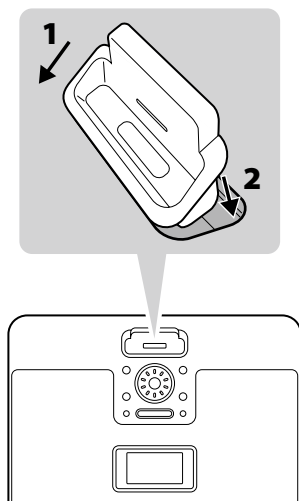
#14: iPod Touch 1st generation
iPod Touch 8/16/32 GB

#15: iPhone (3G)
iPhone (3G) 8/16 GB,
iPhone (3G S) 16/32 GB

- Use the adapter that supplied with the iPod/iPhone or a commercially available one to use the other types of iPod/iPhone.

2 Insert the adapter into the R-4iNT dock.

Fit the front edge of the adapter into the Dock, and then press the back edge of the adapter onto the Dock until a slight "click" is heard indicating the adapter is inserted correctly.



- To remove the adapter, hold its left and right sides and gently pull it up.

Compatible iPod/iPhone Software

If your iPod/iPhone will not work with the R-4iNT or with the remote control unit, software update might solve the problem.

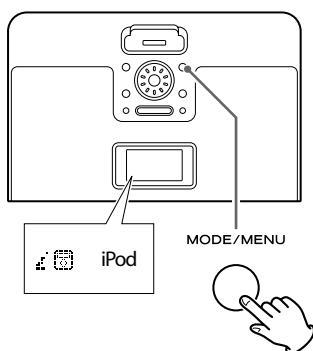
Visit the Apple website and download the latest iPod/iPhone software.

<http://www.apple.com/ipod/download/>

Listening to an iPod/iPhone (1)

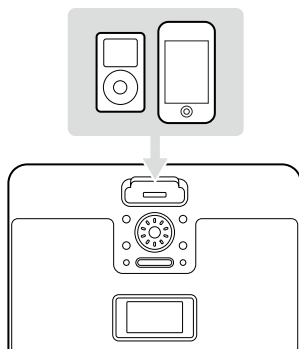
Before use, insert an appropriate Dock adapter in the Dock.

1 Press the MODE button repeatedly to select "iPod".



- You can also use the FUNCTION button (▲/▼) on the remote control unit to select "iPod".

2 Insert the iPod/iPhone into the Dock.



3 Press the Play/Pause button (▶/||) on the iPod or the R-4iNT's remote control unit.

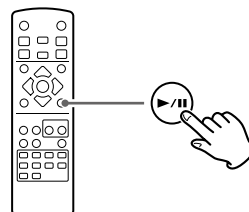
The R-4iNT will start playback from the iPod/iPhone's song list.

- When the iPod/iPhone is inserted while a source other than iPod mode is selected or while the R-4iNT is in the standby mode, "iPod attached – Switch to iPod mode?" is displayed. In this case turn the MULTI JOG to select "YES", and then press the SELECT button.
- In iPod mode, if an iPod/iPhone that is in playback mode is inserted into the dock, the R-4iNT will automatically start playback from the iPod/iPhone's song list.
- Make sure to use an appropriate Dock adapter (see previous page).
- The battery of the iPod/iPhone is recharged to the full whenever the iPod/iPhone is docked and the R-4iNT is connected to the AC line.
- If headphones are also plugged into the iPod/iPhone, sound comes from both the headphones and the R-4iNT speakers.

Stopping playback temporarily (Pause mode)

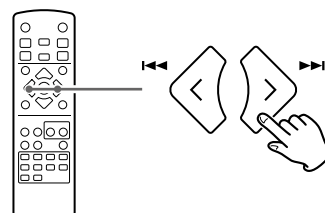
During playback, press the Play/Pause button (▶/||). Playback stops at the current position.

To resume playback, press the Play/Pause button (▶/||) again.



- You can also use the button on the iPod/iPhone to pause playback.

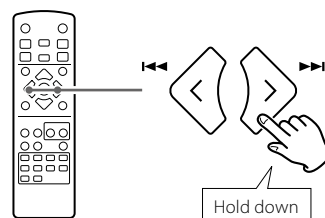
Skipping to an earlier or later song



During playback, press the Skip buttons (◀▶) repeatedly until you find the desired song. The selected song will be played from the beginning.

- If the ◀ button is pressed once during playback, the song currently being played will be played from the beginning. To return to the beginning of the previous song, press the ◀ button twice.

Searching for a part of a song

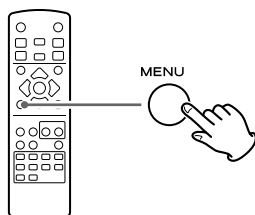


During playback, hold down the Search button (◀▶) to search a part of a song.

Release it when you find the part you want to hear.

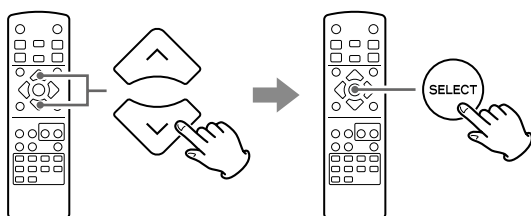
Listening to an iPod/iPhone (2)

Returning to the previous iPod/iPhone menu



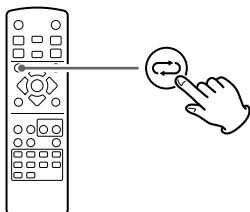
Press the MENU button on the remote control unit.
This button has the same functions as its iPod counterpart.

Selecting the iPod/iPhone menu item



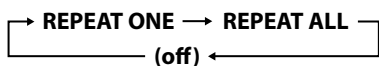
Press the Cursor button (▲/▼) to scroll to the menu item you want, and then press the SELECT button.

Activating the repeat mode



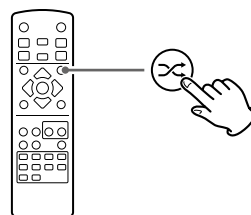
During playback, press the REPEAT button to change the repeat mode.

Each time the REPEAT button is pressed, the iPod/iPhone repeat setting changes as follows:



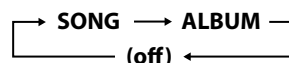
- If you select "REPEAT ONE" to play only one song, the repeat once icon (↺) appears on the iPod/iPhone's display.
- If you select "REPEAT ALL" to play all songs, the repeat icon (↻) appears on the iPod/iPhone's display.

Activating the shuffle mode



During playback, press the SHUFFLE button to change the shuffle mode.

Each time the SHUFFLE button is pressed, the iPod/iPhone shuffle setting changes as follows:

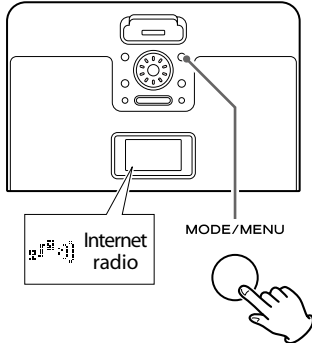


- If you select "SONG", the iPod/iPhone shuffles songs within the list you choose to play.
- If you select "ALBUM", the iPod/iPhone plays all the songs on an album in order, and then randomly selects another album in the list and plays it through in order.
- During shuffle playback, the shuffle icon (⌘) appears on the iPod/iPhone's display.

Listening to the Internet Radio/Podcast

This chapter describes how to listen to an Internet radio station/ Podcast.

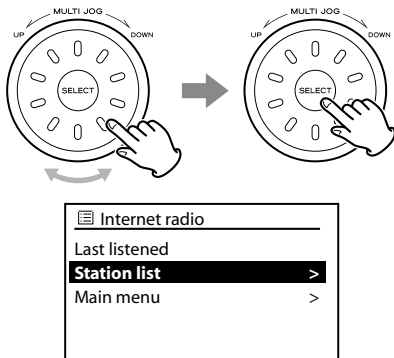
1 Press the **MODE** button repeatedly to select "Internet radio".



The last listened station is received.

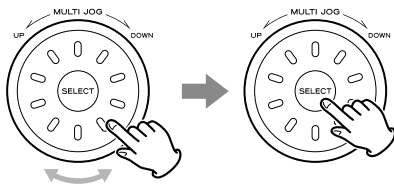
- You can also use the **FUNCTION** button (▲/▼) on the remote control unit to select "Internet radio".

2 Turn the **MULTI JOG** to select "Station list", and then press the **SELECT** button.



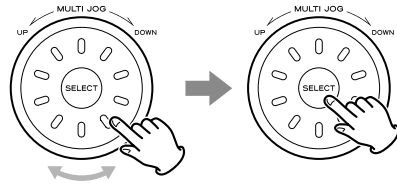
The Station list appears.

3 Turn the **MULTI JOG** to select "Stations", and then press the **SELECT** button.



A list of search methods appears.

4 Turn the **MULTI JOG** to select the search method, and then press the **SELECT** button.

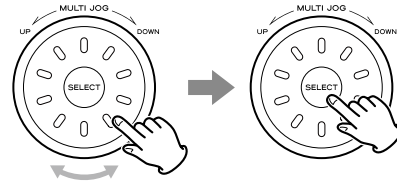


You can choose one of five search method.

- Location** Search by the location of the broadcaster.
- Genre** Search by the genre of music played on the station/Podcasts.
- Search stations** Search by the station's name.
- Popular stations** Select from a list of popular stations.
- New stations** Select from a list of recently added stations.

When you select "Location" or "Genre"

Turn the **MULTI JOG** to select a location or genre, and then press the **SELECT** button.

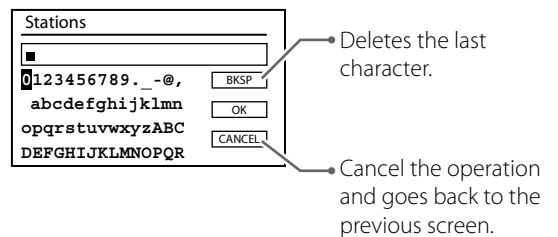


When you select "Search stations"

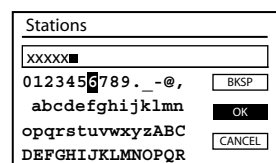
Input a station name you want to listen to.

How to input characters

- Turn the **MULTI JOG** to select the character you want to input. And then, press the **SELECT** button to input the selected character.



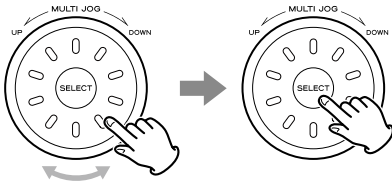
- Turn the **MULTI JOG** to select "OK" after inputting the final character of the station name.



A list of stations is displayed.

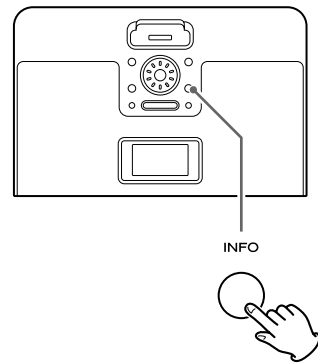
Settings the Internet Radio/Podcast Display

- 5** Turn the **MULTI JOG** to select a station or a Podcast you want to listen to, and then press the **SELECT** button.



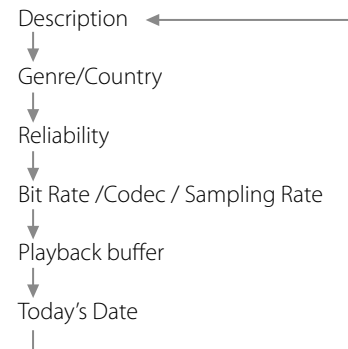
Now you can listen to the station.

You can choose the type of information displayed while listening to the Internet Radio/Podcast.

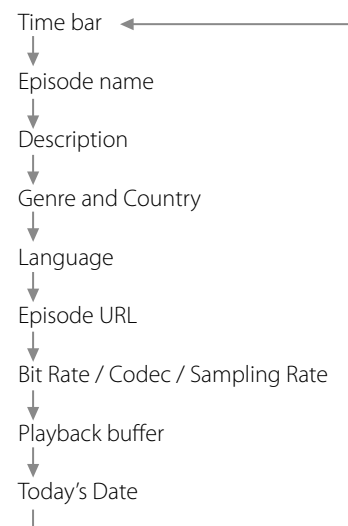


Each time the INFO button is pressed, information on the display changes as follows:

Internet radio



Podcast

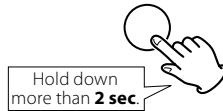
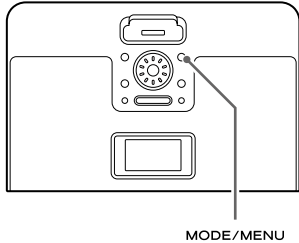


- The types of information displayed may vary depending on the stations/Podcasts.

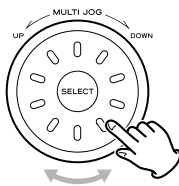
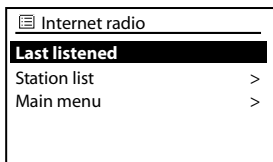
Internet Radio/Podcast Menu Operations

You can access station lists or setup menus using the Internet radio menu.

- 1 In Internet radio mode, press and hold the MENU button for more than 2 seconds.**



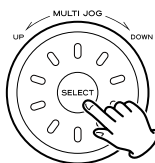
- 2 Turn the MULTI JOG to find the desired menu.**



- You can also use the Cursor buttons (▲/▼) on the remote control unit to scroll through menu items.

For the detail of each item, see right →

- 3 Press the SELECT button to select a menu item.**



Repeat steps **2** and **3** as required.

- Press the < button on the remote control unit to go back to the previous menu.

Items of the Internet radio menu

Last listened

You can select the station/Podcast from the ones you listened to recently.

Station list

My favorites

List of stations/Podcast you stored as favorite is displayed. Select a station/Podcast you want to listen to (see next page).

Local

List of stations/Podcasts provided in your country is displayed. Select a station/Podcast from your favorite genre.

Stations

List of Internet radio stations is displayed (page 20).

Podcasts

List of Podcasts is displayed.

My Added Stations

List of stations/Podcasts you personally added on the radio portal is displayed. Select a station/Podcast you want to listen to (see next page).

Help

Get access code

The "access code" of the unit is displayed (see next page). Each unit of R-4iNT has its "access code". This code is required to log in the Internet radio portal.

FAQ

Audio FAQ is available.

Access the radio portal on the Internet using your computer to fully enjoy the Internet radio function of this unit.

Accessing the radio portal

- 1** On your computer, open internet browser and access following URL.

<http://www.wifiradio-frontier.com>

- 2** Click on the "Register" link to start registration.

- 3** Input your access code and log in.

My favorites

You can create a list of your favorite stations/Podcasts on the portal. This list can be viewed from the R-4iNT, making it easier for you to find your usual programs.

You can see the list of your favorite stations in the Internet radio menu as follows: (See previous page for details)

"Station list" → "My favorites"

Station list

If the station/Podcast you want to listen to is not in the station list, you can create your own list.

You can see the list of your added stations in the Internet radio menu as follows: (See previous page for details)

"Station list" → "My Added Stations"

Checking the "access code" of your unit

Each unit of R-4iNT has its "access code". This code is required to log in the Internet radio portal.

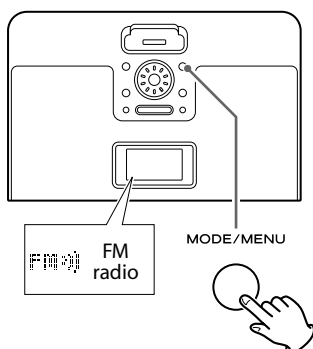
You can see the access code of your R-4iNT in the Internet radio menu as follows: (See previous page for details)

"Station list" → "Help" → "Get access code"

Listening to the FM Radio

This chapter describes how to listen to the FM radio.

1 Press the MODE button repeatedly to select "FM radio".

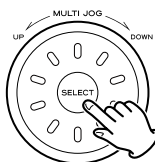


The last listened station is received.

- You can also use the FUNCTION button (▲/▼) on the remote control unit to select "FM radio".

2 Automatic Tuning:

Press the SELECT button to begin automatic tuning.

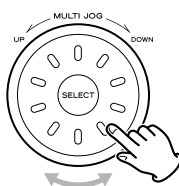


When a station is found, the unit tunes in the station automatically. Repeat this step until the station you want to listen to is found.

- You can also use the SCAN button on the remote control unit to begin automatic tuning.

Manual tuning:

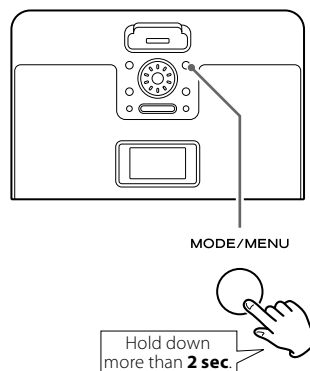
Turn the MULTI JOG until you find the station that you want to hear.



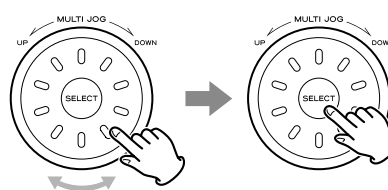
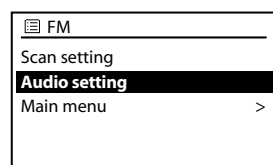
- You can also use the Cursor buttons (▲/▼) on the remote control unit to select a station.

Switching the stereo and monaural mode

1 In FM mode, press and hold the MENU button for more than 2 seconds to open the FM menu.



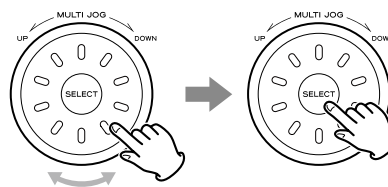
2 Turn the MULTI JOG to select "Audio setting", and then press the SELECT button.



"Listen in mono only?" appears on the display.

- The current setting is marked with a "⚡".

3 Turn the MULTI JOG to select "YES" or "NO", and then press the SELECT button.



NO

FM stereo broadcasts are received in stereo.

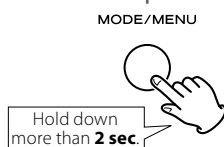
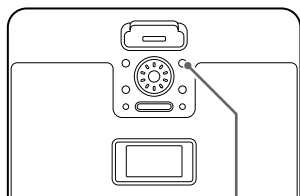
- If the sound is distorted, the signal is not strong enough for good stereo reception. In this case, select "YES" to change to mono mode.

YES

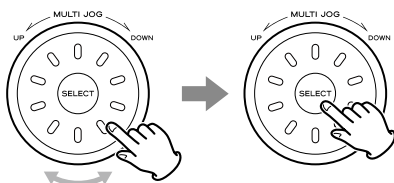
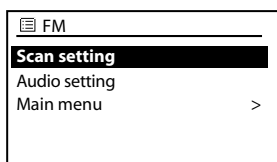
Reception will now be forced into monaural, reducing unwanted noise. To compensate for weak FM stereo reception, select mono mode.

Changing the sensitivity

- 1** In FM mode, press and hold the MENU button for more than 2 seconds to open the FM menu.



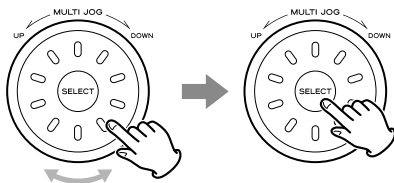
- 2** Turn the MULTI JOG to select "Scan setting", and then press the SELECT button.



"Strong stations only?" appears on the display.

- The current setting is marked with a "⚡".

- 3** Turn the MULTI JOG to select "YES" or "NO", and then press the SELECT button.



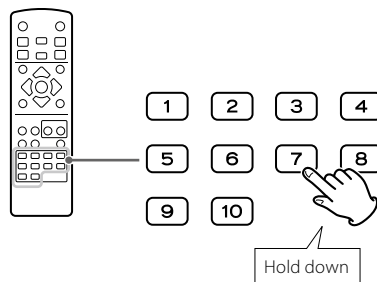
When you select "YES", the R-4iNT receives strong signal only.

Preset Tuning

You can store up to 10 FM stations.

How to preset stations

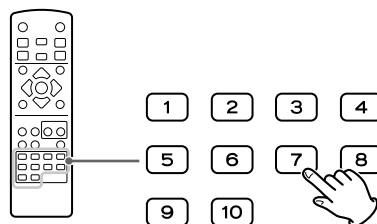
- 1** Tune in a station you want to store (see previous page).
- 2** Press and hold the Number buttons you want to store the station.



"Preset stored" appears on the display.

How to select preset stations

In FM mode, press the Number button.



The selected preset station is tuned in.

Listening to Music of Pandora

You can access Pandora internet radio and listen to the music files. For details, see the website of Pandora.

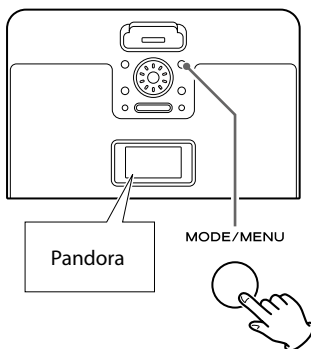
<http://www.pandora.com/>

This function may be unavailable in any country or region where the Pandora service is not provided. Part or all of the service may also become unavailable in the future due to the service provider's circumstances.

Setting up the Pandora

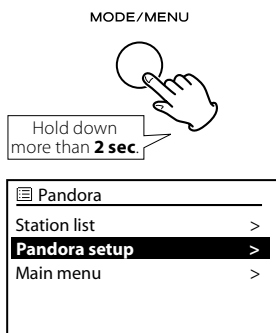
To listen to the music files of Pandora, you need the account of the Pandora.

1 Press the MODE button repeatedly to select "Pandora".

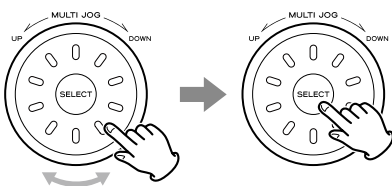


- You can also use the FUNCTION button (▲ or ▼) on the remote control unit to select "Pandora".

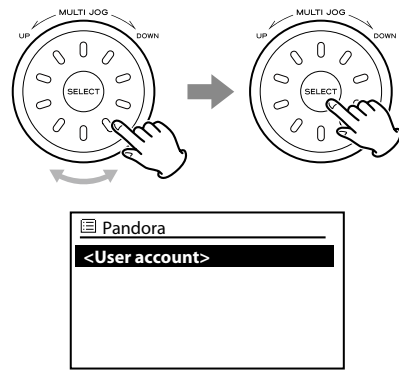
2 Press and hold the MENU button for more than 2 seconds to open the Pandora menu.



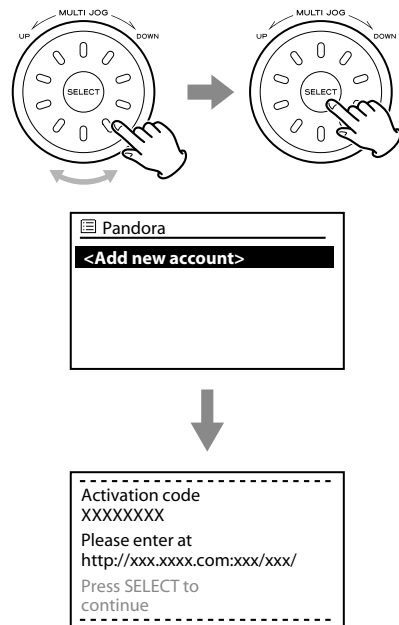
3 Turn the MULTI JOG to select "Pandora setup", and then press the SELECT button.



4 Turn the MULTI JOG to select "User account", and then press the SELECT button.



5 Turn the MULTI JOG to select "Add new account", and then press the SELECT button.



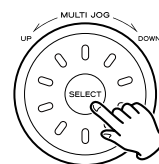
An "Activation code" and a URL appear on the display of the R-4iNT.

- Do not press the SELECT button in this step.

6 Sign up for Pandora using your computer.

Access the URL and follow the instruction on the web site. "Done" appears when the registration is completed.

7 Press the SELECT button of the R-4iNT.

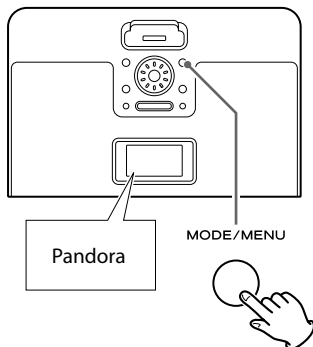


The R-4iNT will memorize your Pandora account.

- You can use up to 3 accounts of Pandora with the R-4iNT.

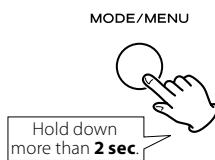
Listening to the radio of Pandora

- 1 Press the **MODE** button repeatedly to select "Pandora".

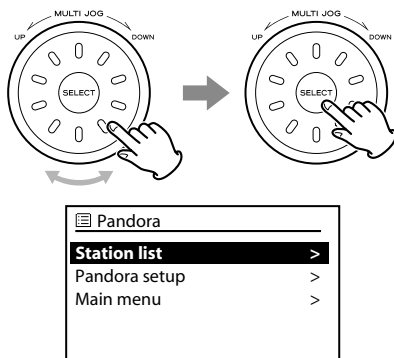


- You can also use the **FUNCTION** button (▲ or ▼) on the remote control unit to select "Pandora".

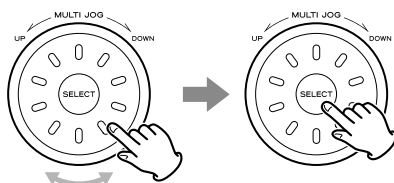
- 2 Press and hold the **MENU** button for more than 2 seconds to open the Pandora menu.



- 3 Turn the **MULTI JOG** to select "Station list", and then press the **SELECT** button.



- 4 Turn the **MULTI JOG** to select the music you want to listen to, and then press the **SELECT** button.



Adding a new station to the Station list

You can add a new station to the Station list in the Pandora menu as follows:

"Station list" → "Create New Station"

Items of the Current track menu

During playback of the music files of Pandora, the "Current track" menu is available. Press the MENU button for more than 2 seconds.

Pandora	>
Station list	>
Current track	>
Pandora setup	>
Main menu	>

You can select one of three items.

Don't play this song for a month

This will prevent the current music file from playing for 30 days.

Why this song?

A description of the current music file appears.

Bookmark...

You can bookmark the song or artist of the current music file.

Setting up the Music Player

About the Music player function

Using the Music player function, you can play back the music files in your computers on the same LAN.

Using this function, R-4iNT can play back the music files in the shared media library. Tag items such as artist names and album names can be viewed from R-4iNT as well.

You need a PC running on Windows XP or Windows Vista, and Windows Media Player 11 or later on it.

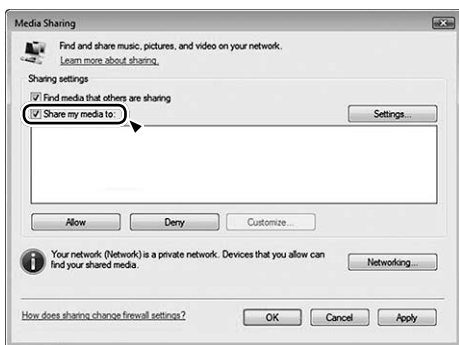
Preparations for Music player

- 1** Connect your computer to the LAN.
- 2** Connect the R-4iNT to the LAN (page 7).
- 3** If the files you want to share are not yet added to the media library of Windows Media Player, add them to the media library.
 - Refer to the manual of Windows Media Player for details.
- 4** On Windows Media Player, open "Library", then "Media sharing".



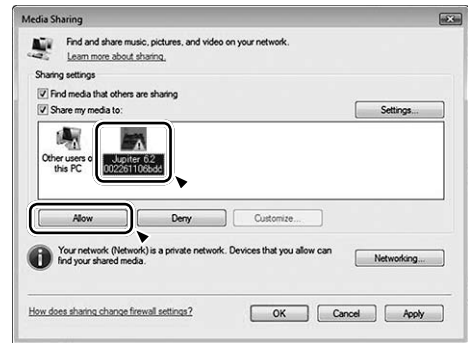
Media Sharing window opens.

5 Activate "Share my media to:"



The R-4iNT appears in the device list as "Jupiter 6.2 XXXXX (Radio ID)".

6 Select the "Jupiter 6.2 XXXXX (Radio ID)" and click "Allow".

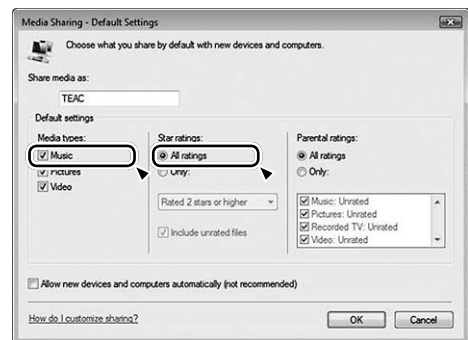


The R-4iNT can now access the shared library.

7 Click on "Settings...", and configure detailed sharing settings.



- To listen to music files regardless of their rating, set "Star ratings" to "All ratings".
- Ensure that "Music" is checked under the "Media types" setting.

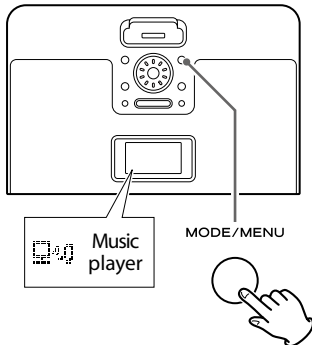


For the procedure of playback, see next page.

Listening to the Music Player

For the preparation of the Music player, see previous page.

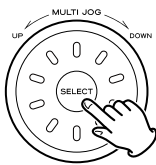
- 1 Press the **MODE** button repeatedly to select "Music player".



The Music player menu appears.

- You can also use the **FUNCTION** button (▲/▼) on the remote control unit to select "Music player".

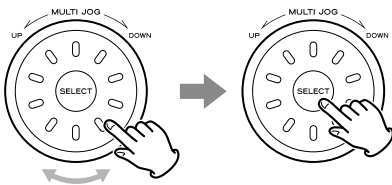
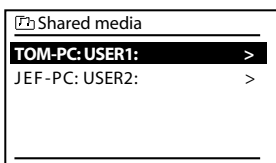
- 2 Press the **SELECT** button to enter "Shared media" menu.



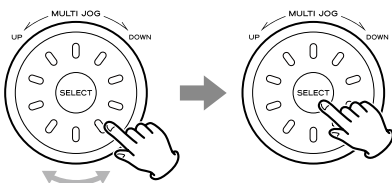
A list of computer name and user account name appear.

- 3 Turn the **MULTI JOG** to select your computer name and user account name, and then press the **SELECT** button.

Example:



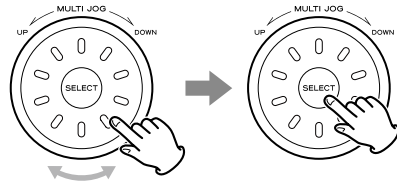
- 4 Turn the **MULTI JOG** to select the folders until the file you want to listen to appears, and then press the **SELECT** button.



Repeat this operation until the file you want appears.

- You can also search for files by selecting "<Search>".

- 5 Turn the **MULTI JOG** to select the file you want to listen to, and then press the **SELECT** button.

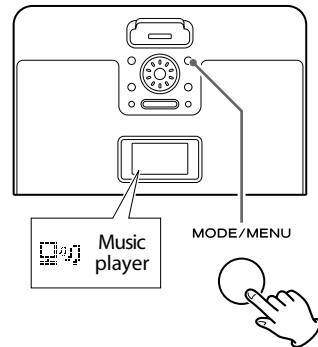


Playback of the selected file starts.

Repeat playback/Shuffle playback

You can set the repeat or shuffle playback.

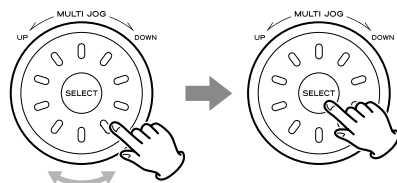
- 1 Press the **MODE** button repeatedly to select "Music player".



The Music player menu appears.

- You can also use the **FUNCTION** button (▲/▼) on the remote control unit to select "Music player".

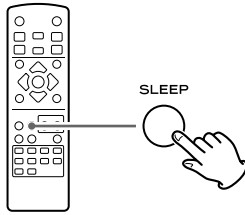
- 2 Turn **MULTI JOG** to select "Repeat play" or "Shuffle play", and then press the **SELECT** button.



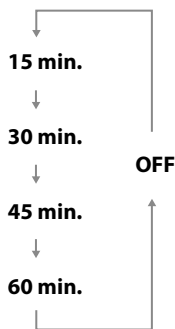
Each time the **SELECT** button pressed, the repeat or shuffle mode changes on and off.

Sleep Timer

You can set the sleep timer so that the unit turns itself off after a specified amount of time.



Each press of the SLEEP button cycles through timer options (from 15 up to 60 minutes). The unit will automatically stop playback and enter Standby mode when the time elapses.



- During the sleep timer, the Sleep indicator (Ⓢ) appears on the display.
- If you want to check the remaining time, press the SLEEP button once. The remaining time will be displayed for 3 seconds, and then return to the normal display.

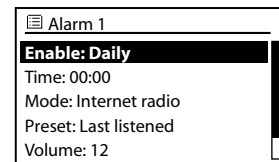
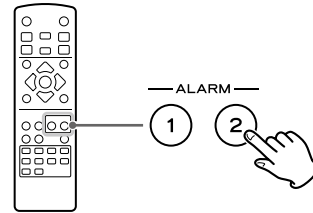
Wake Up Timer

You can set the unit to turn on at specific times. You can set two separate timers with ALARM 1 and ALARM 2.

Setting the wake up timer

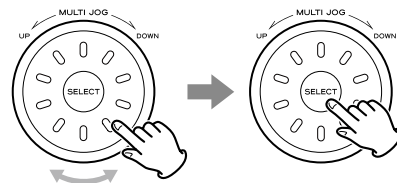
The procedures below are to set ALARM 1. Follow similar steps to set ALARM 2.

- 1 Press the ALARM 1 button to enter the wake up timer setting mode.**



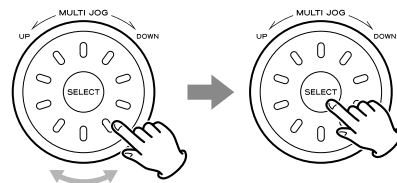
- If the clock has not been set, clock setting display appears. Follow the steps on page 13. ("Setting the Clock")

- 2 Turn the MULTI JOG to select an item to set, and then press the SELECT button.**



- You can also use the Cursor buttons (▲/▼) on the remote control unit to select an item.

- 3 Turn the MULTI JOG to set the value or select an item, and then press the SELECT button.**



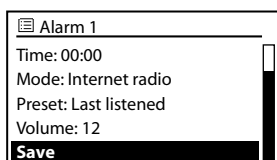
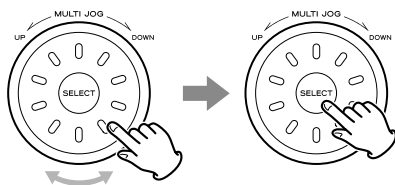
Items of the frequency value

off	Timer off
Daily	Works daily
Once	Works once
Weekends	Works on every weekend
Weekdays	Works on every weekday

- "AUX" and "Music player" cannot be selected as a mode value.

4 Repeat steps **2** and **3** to set all the items.

5 After all items are set, turn the MULTI JOG to select "Save", and then press the SELECT button.



"Alarm saved" appears on the display.
And then the Timer indicator (🕒) appears.

6 Prepare the source.

If the mode is set to "iPod", insert an iPod/iPhone into the Dock.

If the mode is set to "Internet radio" or "FM", tune in a station.

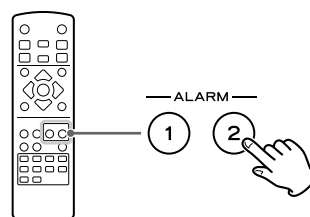
- If the source is set to "iPod" but no iPod/iPhone is set, the buzzer will sound instead.

Note for use with an iPod Touch/iPhone

(When using the R-4iNT wake up timer with an iPod Touch/iPhone as the source)

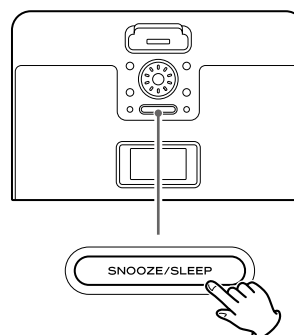
- If you turn the power of an iPod Touch/iPhone off ("Slide to power off"), you cannot use it with the wake up timer even if it is docked in this unit. To use the wake up timer with an iPod Touch/iPhone as the source, do not select "Slide to power off" on the iPod Touch/iPhone. (The screen of the iPod Touch/iPhone can be turned off without any problem.)
- If Video is displayed on an iPod Touch/iPhone's screen, you cannot use it with the wake up timer even if it is docked in this unit. To use the wake up timer with your iPod Touch/iPhone as a source, select any item other than Video on the iPod Touch/iPhone.

Checking the timer setting

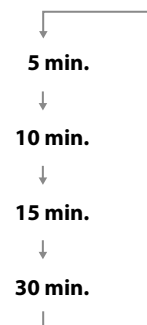


Press the ALARM 1 or ALARM 2 button to enter the wake up timer setting mode and check the details.

Using the snooze function



After the ON time is reached, press the SNOOZE button repeatedly to select the temporary turn off time.



Troubleshooting

If you experience any problems with the unit, please take a moment to look through this chart and see if you can solve the problem yourself before you call your dealer or a TEAC service center.

General

No power.

- ➔ Check the connection to the AC power supply. Check and make sure the AC source is not a switched outlet and that, if it is, the switch is turned on. Make sure there is power to the AC outlet by plugging another item such as a lamp or fan.
- ➔ Press the Standby/On button (⏻/I) to turn the unit on.

Remote control does not work.

- ➔ Press the Standby/On button (⏻/I) to turn the unit on.
- ➔ If the batteries are dead, change the batteries.
- ➔ Use remote control unit within the range (16 ft/5 m) and point at the front panel.
- ➔ Clear obstacles between the remote control unit and the main unit.
- ➔ If a strong light is near the unit, turn it off.

Severe hum or noise is heard.

- ➔ Place the unit as far away from a TV as possible.
- ➔ Make sure the line cords and speaker cables are as far away from the AC supply as possible.

iPod/iPhone Player

Cannot insert the iPod/iPhone.

- ➔ Check if appropriate adapter is inserted to the Dock (page 17).
- ➔ Remove dust or obstacles from the Dock and the iPod/iPhone.

The iPod/iPhone does not play.

- ➔ Remove the iPod/iPhone from the Dock, wait a few seconds, and insert it again.
- ➔ Software update may solve the problem. Visit the Apple website and download the latest iPod/iPhone software (page 17).

Cannot operate the iPod/iPhone on the unit.

- ➔ Select "iPod" as the source.

Cannot operate the iPod/iPhone.

- ➔ Make sure the HOLD switch of the iPod/iPhone is not set to HOLD.

FM Tuner

Cannot listen to any station, or signal is too weak.

- ➔ Tune in the station properly.
- ➔ Rotate the FM antenna until you get stations clearly.

Internet Radio/Podcast

Cannot connect to the Internet.

- ➔ Check if your computer can connect to the Internet using the same network.
- ➔ Enter a correct pass key to the network.
- ➔ Check the settings of your network's firewall. The unit needs access to the following UDP and TCP ports as a minimum: 80, 554, 1755, 5000 and 7070.

Cannot listen to a station/Podcast.

- ➔ The broadcaster is having temporary trouble with the Internet connection.
- ➔ Check if your Internet connection is not temporarily disconnected or disturbed.

Cannot find a station/Podcast in the station list.

- ➔ The station/Podcast may not be broadcast at the moment.
- ➔ The link of the station/Podcast may be out of date.
- ➔ The allowed number of simultaneous listeners of station/Podcast might have reached the maximum.
- ➔ The Internet connection speed is too slow.
- ➔ Add the station/Podcast to your own station list by accessing the Internet radio portal.

Pandora

Cannot connect to the Internet.

- ➔ Check if your computer can connect to the Internet using the same network.
- ➔ Enter a correct pass key to the network.
- ➔ Check the setting of your network's firewall. The unit needs access to the following UDP and TCP ports as a minimum: 80, 554, 1755, 5000 and 7070.

Cannot connect to the Pandora.

- ➔ Check your user account and password.

Music Player

Cannot connect to the LAN.

- ➔ Check if your computer can connect to the Internet using the same network.
- ➔ Enter a correct pass key to the network.
- ➔ Check the settings of your network's firewall. The unit needs access to the following UDP and TCP ports as a minimum: 80, 554, 1755, 5000 and 7070.
- ➔ Check if the computer is not shut down or in the sleep mode. Set up the computer not to shut down or turn into the sleep mode automatically.
- ➔ There may be a problem with the network authentication. Press the MODE button repeatedly to select "Music player" again.

Cannot find a track.

- ➔ Add the track to the media library of Windows Media Player.
- ➔ Set your R-4iNT as a "Jupiter 6.2 XXXXX (Radio ID)" in the device list of Windows (page 28).
- ➔ Select "Allow" for R-4iNT ("Jupiter 6.2 XXXXX (Radio ID)") (page 28).
- ➔ Check the file format. Playable formats are MP3 and WMA.
- ➔ If you have antivirus security software enabled on your computer, the unit may fail to connect.

Specifications

Amplifier

Output power
(Stereo, JEITA) 10 W rms + 10 W rms
Total harmonic distortion..... 0.1 % (at 5 W, 1 kHz)
Frequency response..... 20 Hz to 20 kHz, +0 / -3 dB
Signal-to-noise ratio 90 dB (IHF-A)

Speaker system

Type NXT Balanced Mode Radiator (BMR) system
Impedance..... 4 Ω

FM Tuner section

Tuning range..... 87.5 MHz to 108.0 MHz (50 kHz steps)
Total harmonic distortion (1 kHz) Mono: 1 %
Stereo: 1.5%
Frequency response..... 40 Hz to 10 kHz
Stereo separation (1 kHz) 45 dB
Signal-to-noise ratio..... Mono: 60 dB
Stereo: 55 dB

Internet radio/Music player

Format MP3, WMA, RealAudio

Internet connection

ETHERNET terminal..... 10 BASE-T
Wireless LAN IEEE 802.11b/g
Security WEP, WPA, WPA2

General

Power requirements..... AC 120 V, 60 Hz
Power consumption..... 20 W (Standby: <1 W)
Dimensions (W x H x D)
310 x 53 x 210 mm (12-3/16", 2-1/16", 8-1/4")
Weight (net)..... 1.6 kg (3-1/2 lb)

Standard accessories

Remote control unit (RC-1239) x 1
Batteries (AAA) x 2
AC adapter (PS-M1220) x 1
Power cable for AC adapter x 1
Stereo mini-plug cable x 1
Dock adapter x 4
Dock cover x 1
Owner's manual (this document) x 1
Warranty card x 1

- Design and specifications are subject to change without notice.
- Weight and dimensions are approximate.
- Illustrations may differ slightly from production models.

TEAC

TEAC CORPORATION	1-47 Ochiai, Tama-shi, Tokyo 206-8530 Japan Phone: (042) 356-9156
TEAC AMERICA, INC.	7733 Telegraph Road, Montebello, California 90640 U.S.A. Phone: (323) 726-0303
TEAC CANADA LTD.	5939 Wallace Street, Mississauga, Ontario L4Z 1Z8, Canada Phone: (905) 890-8008
TEAC MEXICO, S.A. DE C.V.	Río Churubusco 364, Colonia Del Carmen, Delegación Coyoacán, CP 04100, México DF, México Phone: (5255)5010-6000
TEAC UK LTD.	Suites 19 & 20, Building 6, Croxley Green Business Park, Hatters Lane, Watford, Hertfordshire, WD18 8TE, U.K. Phone: (0845) 130-2511
TEAC EUROPE GMBH	Bahnstraße 12, D-65205 Wiesbaden-Erbenheim, Deutschland Phone: 0611-71580

This appliance has a serial number located on the rear panel. Please record the model number and serial number and retain them for your records.

Model number _____ Serial number _____

1009-M1509A

Free Manuals Download Website

<http://myh66.com>

<http://usermanuals.us>

<http://www.somanuals.com>

<http://www.4manuals.cc>

<http://www.manual-lib.com>

<http://www.404manual.com>

<http://www.luxmanual.com>

<http://aubethermostatmanual.com>

Golf course search by state

<http://golfingnear.com>

Email search by domain

<http://emailbydomain.com>

Auto manuals search

<http://auto.somanuals.com>

TV manuals search

<http://tv.somanuals.com>